



CATALOG

Advancing Restoration





ON DEMAND!



Website

At www.Dri-Eaz.com, access product features and specifications, owner's manuals, product photos, videos and promotional flyers, and more. Visit our online library for newsletters, technical tips and articles, all downloadable and FREE.

Live Support

Available M-F 7 a.m.-5 p.m. PT. Chat live online with a Dri-Eaz specialist.

Call toll-free

800-932-3030. Available M-F 7 a.m.-5 p.m. PT.



Social media

Follow us stay informed about new products, trade show news, customer events, company news and more.



YouTube

See product demos, customer recommendations and training videos.

How to Buy



Scan QR code with device to find your nearest distributor.

Dri-Eaz has the industry's largest network of authorized distributors located across North America. Our distributors are highly knowledgeable about Dri-Eaz products and are ready to serve your restoration needs. To find a distributor near you, go to our "How to Buy" page:

HowToBuy.drieaz.com

Warranty

To obtain a free copy of the warranty relevant to your product or products, visit warranty.drieaz.com or call 800-932-3030.

PARTS & SERVICE

1. The Dri-Eaz website: www.dri-eaz.com

» Find detailed parts lists, product manuals including troubleshooting guides, do-it-yourself maintenance procedures, warranty policies, and frequently asked questions.

2. Your local Dri-Eaz distributor

» Many Dri-Eaz distributors are Authorized Service Centers, which means they are certified by Dri-Eaz to do repairs. To locate a Distributor or an Authorized Service Center, visit www.dri-eaz.com "How to Buy". When you call your distributor, have your equipment model, serial number, and proof of purchase handy. Your distributor will also help you obtain a Return Materials Authorization (RMA).

3. The Dri-Eaz Service Department

» If you and your distributor decide a return is the best option, please contact us to request a Return Materials Authorization (RMA) before shipping your equipment to us. The RMA helps us to efficiently track your equipment as it is being serviced and minimizes turnaround time.

RESTORATION PRO PACKAGE

Equip your restoration truck with the **best time-proven compact solutions in restorative drying equipment**. This high-performance, rugged gear delivers everything you need to extract, dehumidify and dry your customers' homes and businesses fast and effectively - **the Dri-Eaz way!**



Revolution LGR F413

- **Xactimate® “Large” category** dehu pulls 80 pints/day at AHAM
- **PRECISION CONTROL TECHNOLOGY** delivers outstanding low-grain performance
- **DISPLAYS TEMP AND RH REAL-TIME** to save monitoring time
- **TRANSPORT** up to 6 units on a convertible hand truck
- **PERFORMS AS A “LARGE” DEHU, YET FITS IN TIGHT AREAS** – crawl spaces, bathrooms, attics, etc.

Velo/ Velo Pro F504/F505

- **DAISY-CHAIN UP TO SIX UNITS PER 15-AMP CIRCUIT WITH GFCI OUTLET** – up to 10 with the Velo Pro
- **FOUR-POSITION VERSATILITY** for walls, ceilings, hallways, staircases, cabinets, and crawl spaces
- **UNIQUE ENGINEERED OUTLET** concentrates air on floors and walls

HVE 3000 F479

- **HIGH VACUUM PERFORMANCE.** Includes one two-stage blower plus a second “2-plus” blower for maximum performance
- **SUPERIOR DEBRIS HANDLING.** A high-flow, high-volume clog-resistant sump pump handles up to ½ in. solids. Plus, the large, easy-clean stainless steel filter basket captures all debris larger than ¼ in.

Extraction Tool F511

- **SAVE YOUR BACK!** Instant vacuum release lever means no need to tilt or reposition tool
- **VIEW WINDOW IN HEAD** shows extraction progress; may be removed for cleaning
- **SAVES EXTRACTION TIME, INCREASES PROFIT!**

CONTENTS

DEHUMIDIFIERS	2	HARDWOOD FLOOR DRYING	10
AIRMOVERS	4	CHEMICALS	10
EXTRACTION	6	DESICCANT DEHUMIDIFIER	11
INDIRECT-FIRED HEATER	8	MOISTURE DETECTION	12
AIR FILTRATION	9	EDUCATION	13



DEHUMIDIFIERS

WINNING PERFORMANCE, SMART CONTROLS

TURBOCHARGED PERFORMANCE i-SERIES DEHUMIDIFIERS

The latest Dri-Eaz® i-Series dehumidifiers deliver turbocharged low-grain performance that ensures thorough end-of-job drying. Besides efficient dehumidification, they also provide these on-screen efficiency-boosters:

- Smart controls display real-time inlet and outlet temperature, Rh and GPP
- See grain depression instantly on-screen - determine drying progress at a glance
- Filter and coil inspection/cleaning reminders help you keep your units running at maximum efficiency
- Enhanced menu is easy to use and saves time

New!



REVOLUTION™ LGR

- » **PRECISION CONTROL TECHNOLOGY** delivers best low-grain performance in its class
- » Secure, compact stacking
- » **EASIEST TO TRANSPORT MULTIPLE UNITS** on a handtruck
- » **PERFORMS AS A "LARGE" DEHU YET FITS WHERE OTHERS DON'T** – crawlspaces, bathrooms, kitchens, etc.
- » **FASTEST ACCESS** for cleaning and maintenance
- » **MAKE FEWER TRIPS** – make more profit!

F413

XACTIMATE® CODE: WTR DHM> (L)



- » 71 Velo or Velo Pro airmovers
- » 20 Revolution LGR dehumidifiers
- » 2 LGR 7000 XLi dehumidifiers
- » 4 HEPA 500 air scrubbers
- » 1 DriTec 4000i desiccant dehumidifier
- » 2 HVE 3000 flood pumpers, Rover, and Extraction Tools



LGR 7000XLi

- » **PATENTED ADVANCED CROSSFLOW TECHNOLOGY** maximizes efficiency – even in low grain conditions
- » **BUILT-IN SENSORS** auto-adjust operation to optimize performance across all job conditions
- » **SEALED LARGE-CAPACITY PUMP BASIN** – easily handles water from an unintentional defrost after an unexpected shut-down
- » **INTEGRATED CORD AND HOSE STORAGE AND STACKABLE FOR STORAGE** – saves room in warehouse.

F412

XACTIMATE® CODE: WTR DHM>> (XL)

REVOLUTION LGR WITH OPTIONAL DUCTING KIT



DODGE PROMASTER



LGR 2800i

High heat

The LGR 2800i provides high performance with low energy consumption - 130 pints per day at AHAM with just 8 amps. Automatic high temp operation – up to 125°F.

F410

XACTIMATE® CODE: WTR DHM>> (XL)



LGR 3500i

Maximize your dehumidification

Delivering 170 pints at AHAM at only 10.5 amps, the LGR 3500i outperforms all other portable dehumidifiers.

F411

XACTIMATE® CODE: WTR DHM>>> (XXL)



LGR 3500i WITH OPTIONAL V MAX ADAPTER



DEHUMIDIFIER ACCESSORIES:

REVOLUTION DUCTING KIT
This complete kit lets you secure layflat ducting (F268) to your Revolution LGR.

F530



VMAX ADAPTER

Directs dry warm air directly across the floor for faster drying. For the 3500i and 2800i.

F422



LAYFLAT DUCTING

Strong, 4-mil poly ducting – 500 feet per roll. 13 in. wide, expands to 8.3 in. diameter. Cut to length.

F268



EVOLUTION® LGR

Our best-selling LGR dehumidifier offers a compact design with excellent low-grain performance

ITEM #F292-A

XACTIMATE® CODE: WTR DHM > (L)

DRIZAIR® 1200

Standard refrigerant dehumidifier with user-friendly controls in a rugged package

ITEM #F203-A

XACTIMATE® CODE: WTR DHM (M)



COMPARE DEHUS

	LGR 3500i	LGR 2800i	LGR 7000XLi	REVOLUTION® LGR	EVOLUTION® LGR	DRIZAIR® 1200
MODEL	F411	F410	F412	F413	F292-A	F203-A
TYPE	Low Grain Refrigerant	Low Grain Refrigerant	Low Grain Refrigerant	Low Grain Refrigerant	Low Grain Refrigerant	Standard Refrigerant
DIMENSIONS (H x W x D)	40.5 x 23 x 24 in. 103 x 58 x 61 cm	40.5 x 23 x 24 in. 103 x 58 x 61 cm	33.5 x 20 x 20 in. 85 x 51 x 51 cm	17.6 x 12.5 x 21.5 in. 44.7 x 31.8 x 54.6 cm	33.5 x 20.7 x 20.7 in. 85 x 52.5 x 52.5 cm	32 x 20 x 19.5 in. 83 x 50 x 50 cm
WEIGHT	160 lbs. 73 kg	160 lbs. 73 kg	107 lbs. 49 kg	65 lbs. 29.5 kg	92 lb 42 kg	80 lb 36 kg
TESTED WATER REMOVAL AHAM (80°F/60%RH)	170 pints 80.5 L /day*	130 pints 61.5 L /day*	130 pints 61.5 liters / day*	80 pints 38 L /day*	70 pints 33 L /day*	64 pints 30 L /day*
MAX AT SATURATION	264 pints/day 124.9 L/day	238 pints/day 112.6 L/day	235 pints/day 111.2 L/day	139 pints/day 66 L/day	143 pints/day 67.7 L/day	145 pints/day 68.6 L/day
PROCESS AIR RATING	400 CFM 697.7 CMH**	400 CFM 697.7 CMH**	325 CFM 552 CMH**	121-180 CFM 206-306 CMH**	160 CFM 272 CMH	227 CFM 386 CMH
HANDLE	Rotomolded	Rotomolded	Steel, fold-down	Steel, fold-down	Steel, fold-down	Metal
POWER 115V	10.5 amps	8 amps	8.3 amps	6.2 amps	5 amps	6.4 amps
DEFROST TYPE	Fan defrost				Hot-gas bypass	
OPERATING RANGE	33-100°F 1-38°C	33-125°F 1-52°C	33-100°F 1-38°C	33-100°F 1-38°C	33-100°F 1-38°C	33-100°F 1-38°C
CONTROLS	Electronic Touchpad with Humidstat and Hour Meter				Electronic Touchpad with Hour Meter	
WATER PUMP-OUT	Centrifugal		Submersible pump		Centrifugal	
REFRIGERANT	R 410a used in all models manufactured since Jan. 1, 2010					
WHEELS	Semi-pneumatic		—		Semi-pneumatic	
HOUSING	Rotomolded polyethylene					
SAFETY	ETL certified to UL/CSA Standard			ETL certified to CSA Standard		ETL certified to UL/CSA Standard

* Water removal capacity (at AHAM) in pints per day is verified by control chamber testing. SPECS SUBJECT TO CHANGE WITHOUT NOTICE.

**Max. Speed automatically adjusted for optimal performance.



AIRMOVERS

BUILT IN USA
WITH GLOBALLY SOURCED MATERIALS



LEADING THE MARKET IN PERFORMANCE AND DURABILITY.

Dri-Eaz is dedicated to ensuring you the most efficient drying while providing ease-of-use features like fast disassembly for cleaning and onboard outlets for daisy chaining. And Dri-Eaz airmovers are famous for their restoration-tough durability and reliable, long-lasting performance.

HEPA KIT
DOUBLE THE UTILITY OF YOUR VELO!

FASTEST DRYING IN THE INDUSTRY

The Velo™ airmover breaks performance barriers with unique patented airflow technology! PLUS – Ultra-low amps. Five-position versatility.

- » **LESS THAN HALF THE POWER CONSUMPTION**
– use twice as many airmovers per circuit for double the drying power!
- » **DAISY CHAIN UP TO 6 UNITS PER 15-AMP CIRCUIT** with GFCI outlet– or 10 units with the variable speed Velo Pro
- » **5 DRYING POSITIONS** for walls, ceilings, hallways, staircases, cabinets, crawlspaces
- » **RUGGED ROTOMOLDED HOUSING WITH FLEX HANDLE** – covered by lifetime limited warranty
- » **LIGHT ENOUGH TO CARRY 2 OR EVEN 4 VELOS AT ONCE** or up to 6 easily with a handtruck!



VELO F504
XACTIMATE® CODE: WTR DRY

VELO PRO F505
XACTIMATE® CODE: WTR DRY

	VELO	VELO PRO
POWER	1.9 AMPS	1.2-1.9 AMPS
MOTOR	.25 HP	.25 HP
SPEEDS	1-SPEED	VARIABLE SPEED
WEIGHT	21 LBS. 9.52 KG	21 LBS. 9.52 KG
DIMENSIONS (D x W x H)	23 x 18 x 9 IN.	23 x 18 x 9 IN.
CORD LENGTH	58.4 x 45.7 x 22.9 CM	58.4 x 45.7 x 22.9 CM
	15 FT. 4.6 M	15 FT. 4.6 M

BONUS Velo Pro Features



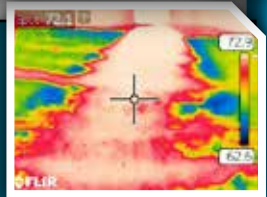
VARIABLE SPEED



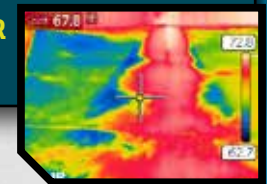
KICKSTAND

VELO

Actual Airflow Thermal Images
3 min. 20 SEC.
drying time
(White=Dry)



COMPETITOR



STEALTH AV3000

New!

The **ULTIMATE** versatile, high-velocity axial airmover.

Quickly adjust the Stealth's angle of attack to direct its high-velocity airflow.

- **ENGINEERED BLADES** for QUIET operation and POWERFUL airflow
- **INTEGRATED STAND** to direct airflow exactly where it's needed
- **VARIABLE SPEED** for ultimate control

ITEM #F568

XACTIMATE® CODE: WTRDRY+

MODEL	STEALTH AV3000 (F568)
AMP DRAW	2.7 AMPS (115V)
UNITS PER 15 AMP CIRCUIT	UP TO 4
TESTED AIR MOVEMENT	2600 CFM 4417 CMH
SPEEDS	VARIABLE SPEED ROTARY SWITCH
WEIGHT	27.5 LBS. 12.5 KG
DIMENSIONS (D x W x H)	10.8 x 24.3 x 24.0 IN. 27.4 x 61.7 x 61.0 CM
CORD LENGTH	16 FT. 4.9 M
CONSTRUCTION	ROTMOLDED HOUSING



AIRMOVER ACCESSORIES

WWW.DRI-EAZ.COM | 800-932-3030



VELO AND VELO PRO HEPA KIT

Use the Velo or Velo Pro for drying and clear the air for workers or homeowners, especially with asthma or allergies. The kit features a HEPA media filter and pre-filter to minimize dust and particulates during restoration.

F518 (Velo not included)
XACTIMATE® CODE: WTR FHEPAC+

STACKING CLIPS KIT

Clips and screws to retrofit 5 Velos for more secure stacking

F570 Set of 10

DRI-EAZ® TURBODUCT

Ventilate or dry confined spaces. Attach a Sahara HD or Sahara Pro X3 for 15 feet of 10-inch diameter ducting.

F134

STO&GO DUCTING

Vortex ducting for powerful ventilation. 25 feet of collapsible 12-inch ducting with a built-in protective case.

F405

MAXGRIP CARPET CLAMP

Securely holds carpets during drying (for Sahara)

F349

EQUIPMENT STORAGE BRACKET

Wall mount system helps keep Sahara airmovers securely stored on trucks.

F362

TURBOVENT® 48 INTER-AIR DRYING SYSTEM™

Ideal for drying wet wall cavities. Attach the TurboVent 48 directly to any Sahara snout to intensify wall drying through a 48-inch wide contact area.

F108

SAHARA SNOOT ADAPTER KIT

Tackle three areas at once. Expand your TurboVent® InterAir Drying System with an additional snout adapter. Works with any Sahara airmover.

F201

TURBOVENT® INTERAIR DRYING SYSTEM™

Dry inside cabinets bases and under stairs. Attach to your Sahara TurboDryer® to force air into difficult-to-dry areas.

F200



SAHARA PRO X3 TURBODRYER®

Full-featured airmover offers high velocity drying with low amp draw and longer reach.

F351
XACTIMATE® CODE: WTR DRY

POWER MOTOR	4 AMPS
SPEEDS	0.33 HP
VELOCITY	3-SPEED
	2071 FT/MIN

SAHARA HD

Our powerful 1 HP TurboDryer dries inside walls and cabinets with ease.

F352
XACTIMATE® CODE: WTR DRY++

POWER MOTOR	10 AMPS
SPEEDS	1.0 HP
VELOCITY	3-SPEED
	3206 FT/MIN

ACE

Top-of-the-market CFM per amp with six-position drying versatility.

The Ace® TurboDryer produces the most CFM per circuit of any airmover on the market. Stackable for compact storage and transport.

F259
XACTIMATE® CODE: WTR DRY+

POWER MOTOR	1.5 AMPS
SPEEDS	.25 HP
CFM	2-SPEED
	1881 CUBIC FT/MIN

SPECIALTY AIRMOVERS



VORTEX

Powerful ventilation – even with extra-long ducting runs.

The Vortex has the power you need to ventilate structures, create negative pressure systems, or enhance ventilation for faster restorative drying. A built-in handle and simple 1-speed switch make operation a snap.

F174-BLU
XACTIMATE® CODE: WTR DRY++

POWER MOTOR	7.4 AMPS
SPEEDS	1.0 HP
CFM	1-SPEED
STATIC PRESSURE	2041 CUBIC FT/MIN
	3.2 IN 8.1 CM

STUDEBAKER AIRPATH™

Dry carpets and hard surface floors with 360° airflow at 40 mph.

F377

POWER MOTOR	7.5 AMPS
SPEEDS	1.0 HP
	2-SPEED

DRI-POD

At only 10.6 lbs and 15 inches across, the high airflow of the Dri-Pod is perfect for small spaces like closets and stairway landings. Dry carpet, tile, vinyl or hardwood floors faster than ever!

F451

POWER WEIGHT	1.1 AMPS
SPEEDS	10.6 LBS. 4.8 KG.
	1 SPEED





EXTRACTION

HVE-LL

LARGE LOSS EXTRACTOR

New!



Just pick it up and GO!

- **Fast setup** - be ready to extract in 30 minutes
- **No external power required!**
- **No permanent installation required – forklift into trucks, trailers, shipping PODs – ready to go!**
- **No water system to maintain**, no need to freeze-guard
- **Fits in a short bed full size pickup**
- **Self-contained** - fully equipped with wand, hoses and fuel cell

- **Industry proven and dependable high performance power plant and vacuum system**
- **High capacity non clogging, low maintenance waste water pump out**
- **Maximum water extraction when and where you need it**

ITEM #F573

XACTIMATE® CODE: WTR EXT (+ & W)

SYSTEM DIMENSIONS 60 x 51.4 x 78.4 IN.
(W x H x D) 152.4 x 130.6 x 199 CM
WEIGHT (DRY) 750 LBS. | 340 KG

ACCESSORIES INCLUDED:

- ONE 200 FT. | 61 M SECTION OF 2 IN. VACUUM HOSE
- ONE 50 FT. | 15 M SECTION OF LAYFLAT DISCHARGE HOSE
- TOOLBOX
- EXTRACTION TOOL INFO
- OWNER'S MANUAL

SO VERSATILE THE MULTI-TOOL OF PORTABLES!



Why restorers *LOVE* the Dri-Eaz HVE 3000

POWERFUL EXTRACTION, DUAL DUTY

- 1 PORTABLE EXTRACTOR** with high vacuum and powerful lift pulls water from carpet and pad fast and pumps out at up to 50 gpm
 - 2 INLINE TRUCKMOUNT BOOSTER AND FILTER!** Add a vacuum boost on long hose runs, filter debris through the HVE's stainless easy-clean filter, and divert water from the waste tank
- **EASY-PULL HOSE** makes it effortless to move as you extract
 - **CLOG-RESISTANT, HIGH-VOLUME INDUSTRIAL PUMP** boosts job productivity
 - **HEPA FILTER** on outlet helps **PREVENT CROSS-CONTAMINATION**

BUILD YOUR BUSINESS USING THE HVE 3000

TAKE ON MORE JOBS when your truckmount is busy or when portable flood extraction is the answer (apartments, highrises, and urban areas).

Harness the full power of the HVE 3000 with the Rover for deep carpet and pad extraction, or use with Rescue Mats for hardwood floor extraction.

ITEM #F479

XACTIMATE® CODE: WTR EXT (+ & W)

**Order your
HVE 3000 today!**

AQUA HELIX HIGH VOLUME EXTRACTION TOOL

WITH SYSTOLIC VECTOR
PERFORMANCE TECHNOLOGY!

SVP Technology provides deep extraction performance in a lightweight, easy to store, and cost-effective tool.

- Cut deep extraction time by up to 33% and do consistent, thorough job without relying on operator skill or patience.
- Use multiple tools at once to reduce extraction time
- Space-saving tool is compact for storage and easy to transport

ITEM #8.635-000.0 XACTIMATE® CODE: WTR EXT+



ERGONOMIC EXTRACTION TOOL JUST LEAN IN AND PUSH FORWARD, THEN RELEASE THE VACUUM!

Designed to use the operator's weight for deep extraction, its patent-pending glide delivers a powerful seal for maximum water removal, instant-view window helps you monitor extraction progress.



ITEM #F511

XACTIMATE® CODE: WTR EXT+



ROVER® HIGH VOLUME EXTRACTOR

FAST EXTRACTION WITH UNSURPASSED MANEUVERABILITY

- » Extraction can be visually monitored through the clear take-up tube
- » High-intensity LED worklight clearly illuminates extraction path
- » Replaceable polymer glide seals firmly over all carpets to provide deep extraction
- » Joystick is rated for 5 million cycles for years of service
- » Front-loading wheels make the unit easy to transport
- » Unit folds flat for space-saving storage

ITEM #F354

XACTIMATE® CODE: WTR EXTW



INDIRECT-FIRED HEATER



DRAGON[®] 3600

THE HIGHEST QUALITY HEATER ON THE MARKET, PERIOD!



As the only mobile heater designed and built for restoration, the Dragon delivers the performance you need to tackle drying jobs even in the most difficult conditions. We build the Dragon in our U.S. plant using only premium components, including a top-of-the-line Beckett burner, a TIG-welded corrosion-resistant aluminum tank and sturdy no-flat wheels. With 120,000 BTUs of heat and true 700 CFM airflow, the diesel-fired Dragon can produce up to 120°F (49°C) of temperature rise to make cold weather drying fast, efficient and profitable

DESIGNED AND BUILT FOR RESTORATION

- » **EXTENDED RUNTIMES** – get 36 hours of operation without refueling – triple the duration of other heaters.
- » **POWERFUL TEMP RISE** – 145°F with weather shield installed; 120°F without weather shield installed.
- » **INDIRECT-FIRED OPERATION** for clean heat and no additional moisture – speeds drying on every job. Use with positive or negative pressure setups, too!
- » **HIGHLY MOBILE** – semi-pneumatic tires never go flat and ball bearing wheels keep the unit rolling smoothly.
- » **PRECISION HEAT CONTROL** – thermostat with remote sensor (included) to help operators comply with RIA Safe Harbor clause.
- » **READY-TO-ROLL** package includes quick clamp to secure ducting to heater outlet.
- » **SAFETY** – CSA listed

ITEM #F535
XACTIMATE[®] CODE: WTR FURN10

ADDITIONAL FEATURES:

- SIGHT GAUGE
- FUEL DRAIN PLUG
- LIT POWER CORD PLUG

ACCESSORIES INCLUDED:

- 25 FT. SECTION OF 12 IN. HEAT-RESISTANT DUCTING
- THERMOSTAT WITH 50 FT. REMOTE SENSOR
- STACK AND RAIN SHIELD
- 4 OZ. DIESEL GUARD WINTERIZING TREATMENT



EASY ALTITUDE ADJUSTMENT



FUEL LEVEL SIGHT GAUGE

SPECIFICATIONS:

MODEL	F535
POWER	9.2 AMPS, 115 VOLT, 60 HZ
DIMENSIONS (H x W x L)	2.5 x 23.7 x 65.1 IN. 1.1 x 0.6 x 1.7 M
WEIGHT (EMPTY)	250 LBS. 113 KG
WEIGHT (FULLY FUELED)	495 LBS. 225 KG
HEAT OUTPUT	120,000 BTU/HR 29.3 KWH
TEMP RISE	+145°F WITH WEATHER SHIELD +120°F WITHOUT WEATHER SHIELD
AIRFLOW	680 CFM WITH WEATHER SHIELD 780 CFM WITHOUT WEATHER SHIELD
FUEL CAPACITY	32 GAL. 208 LITER (MAX.)
FUEL TYPE	DIESEL
FUEL CONSUMPTION	.8 GAL. 3.1 LITER /HR
FUEL PUMP PRESSURE	140 PSI 966 KPA
SAFETY	CSA LISTED
XACTIMATE CODE	WTR FURN10

Specifications are subject to change without notice. Some values may be approximate.



THE INDUSTRY'S #1 CHOICE.

With user-friendly and versatile features, the HEPA 500 is ideal for handling indoor air quality needs on every restoration job.

DEFENDAIR® HEPA 500

Restorers' favorite high efficiency portable air scrubber/negative air machine.

High efficiency air filtration, the maximum clean air rating from AHAM, and tremendous versatility – all with a small footprint! The DefendAir HEPA 500 combines advanced clean air performance with features that help make improving IAQ easier.

- » **ADVANCED 2-STAGE FILTRATION TECHNOLOGY**, plus optional activated carbon filter — or 3-stage first-pass HEPA filtration with optional DOP filter
- » **DAISY CHAIN CAPABILITY** – link up to 3 units on 1 power outlet
- » **VARIABLE CFM ON EACH UNIT** – up to 1500 CFM on one circuit
- » **STACKABLE, LIGHTWEIGHT AND EASILY TRANSPORTABLE**

ITEM #F284

XACTIMATE® CODE: WTRNAFAN



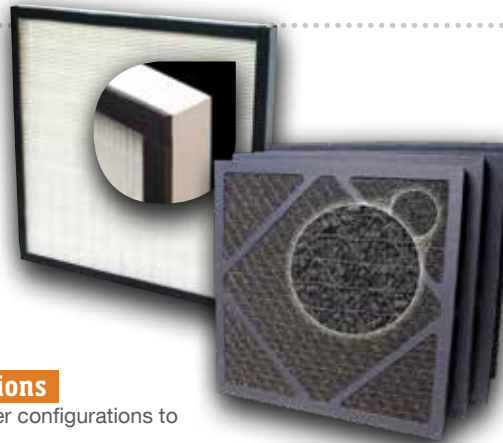
POWER	115V/3 amps
DIMENSIONS (H x W x D)	24.6 x 26.2 x 18.2 in. 62.5 x 66.5 x 46.2 cm
DUCT SIZE	Intake: 12 in. 30.5 cm Outlet: 8 in. 20.3 cm
WEIGHT	44 lbs. 19.9 kg
VARIABLE AIR MOVEMENT	250—500 CFM
STORAGE/TRANSPORT	Stackable
HOUSING MATERIAL	Rotomolded polyethylene
DAISY CHAIN	Up to 3 units
CIRCUIT PROTECTION	GFCI protected outlet
POWER CORD LENGTH	25 ft. 7.62 m
HEPA FILTER INDICATOR LIGHT	Primary Filter change
SAFETY	UL, C-UL Listed



FILTERS

DOP STAGE 2 PRE-FILTER

Makes the HEPA 500 a high efficiency three-stage air filtration unit, ready for any sensitive job requiring first-pass HEPA filtration. With the standard pre-filter, DOP Stage 2 pre-filter and the HEPA primary filter installed, the HEPA 500 passes laboratory DOP testing conducted per ANSI standards, achieving an efficiency rating of 99.97% against oily aerosol particles down to 0.3 microns.



ACTIVATED CARBON FILTER

Equips the HEPA 500 to capture a wide variety of volatile organic compounds (VOCs), including soot and smoke, food odors, fumes from paint and paint thinners, sewer odors, and many other compounds. Individually wrapped filters with uniformly-sized pellets help to ensure maximum airflow and maximum contact while minimizing filter dust.

Standard HEPA 500 Filter Configurations

The HEPA 500 may be set up in a variety of filter configurations to suit your particular air filtration requirements.

FILTERING APPLICATION	FIRST Pre-Filter position	SECOND Pre-Filter position	FINAL Primary filter (HEPA)
Clean water loss air scrubbing	1st Stage not necessary	2nd Stage Pre-Filter	HEPA 500 filter cartridge
Standard air scrubbing	1st Stage Pre-Filter	2nd Stage Pre-Filter	HEPA 500 filter cartridge
"First Pass" efficiency air filtration	2nd Stage Pre-Filter	DOP Stage 2 Pre-Filter	HEPA 500 filter cartridge
Air scrubbing and odor control	Activated Carbon Filter	2nd Stage Pre-Filter	HEPA 500 filter cartridge

HEPA 500 filters

- F270 1ST STAGE PRE-FILTER (12 PK)**
- F271 2ND STAGE PRE-FILTER (12 PK)**
- F415 DOP STAGE 2 PRE-FILTER (4 PK)**

- F321 HEPA 500 FILTERS (8 PK)**
XACTIMATE® CODE: WTRFHEPA
- F397 ACTIVATED CARBON FILTER (4 PK)**
XACTIMATE® CODE: WTRFLVAP

Download a **FREE** copy of the Guide to Air Scrubbing at HEPA500.drieaz.com

To learn more about the features and benefits of the HEPA 500 and air filtration, scan this code.



DRIFORCE



AirWolf F228

DriForce F211-BU



AIRWOLF/WOLFPACK



RESCUE MAT



HARDWOOD FLOOR DRYING

Wood floors are highly vulnerable to water damage, but by using Dri-Eaz floor drying systems, in many cases these expensive floors can be returned to like-new condition.

DRIFORCE® INTERAIR DRYING SYSTEM

- » Speed up the drying of wall cavities, under cabinets, stairwells and tubs
- » Small ¼ in. holes are easy to repair
- » Use positive or negative pressure to force air in or vacuum air out
- » Can dry up to 90 linear feet of wall space

ITEM #F211

XACTIMATE® CODE: WTR WALL

COMPLETE SYSTEM INCLUDES:

- | | |
|----------------------------|-----------------------------|
| 13 DriForce Airmover | 5 coupler fittings |
| 17 7 ft. hoses w/ cuffs | 2 T-fittings |
| 8 manifolds | 25 tube extender connectors |
| 1 400 ft. PVC tubing | 1 muffler |
| 100 ¼-in. injector nozzles | 2 wheeled duffel bags |
| 4 manifold end caps | |

DRIFORCE AIRMOVER UNIT ONLY: ITEM #F211-BU

DRIFORCE AIRMOVER SPECS

MODEL	F211
DIMENSIONS (H x W x D)	14 x 14 x 12 in. / 36 x 36 x 30 cm
WEIGHT	14.5 lbs. 7 kg
MOTOR SPEEDS	1-speed
MAX. STATIC PRESSURE	38 in. 97 cm
MAX POWER 115V	4.8 amps
AVG. POWER 115V	3 amps
STACKABLE	Yes
SAFETY	UL, C-UL Listed

RESCUE MAT® HARDWOOD FLOOR DRYING SYSTEM

- » Just one hose connection per mat offers quick setup
 - » Gasketed edge creates powerful, automatic seal—no tape needed
 - » DriForce draws out trapped water vapor
 - » Use with a portable floor extractor to extract water from below hardwood floor
 - » Combine with the AirWolf/WolfPack for fastest drying of hardwood floors
- COMPLETE SYSTEM INCLUDES:
- 4 46 x 30 in. mats
 - 2 23 x 30 in. mats
 - 3 7 ft. hose with cuffs
 - 2 Connector sleeves
 - 6 Hose cuffs
 - 5 T-connectors
 - 1 Gasket roll

ITEM #F286

XACTIMATE® CODE: WTR WFI

ADDITIONAL RESCUE MAT PANEL KIT

PANEL PACKAGE INCLUDES:

- 4 46 x 30 in. mats
- 2 23 x 30 in. mats

ITEM #F287

AIRWOLF/WOLFPACK FLOOR DRYING SYSTEM

- » Unbeatable combination of up to 800 CFM and 7 inches of static pressure
- » Drives water from beneath damaged hardwood floors through flutes using positive “push”
- » Accelerates airflow at bottom of hardwood for increased evaporation

AIRWOLF ITEM #F228

XACTIMATE® CODE: WTR WFD

WOLFPACK ITEM #F243



DISINFECT AND DEODORIZE



MILGO PLUS

One-step disinfectant-cleaner and sanitizer concentrate.

Milgo Plus inhibits growth of mold and mildew and handles tough odors like urine, sewage, and perspiration. EPA-registered (#70385-6). Each bottle makes up to 64 gallons of solution, depending on application. See label online at dri-eaz.com

- » Kills Staphylococcus aureus Methicillin-Resistant (MRSA) and protects against a wide range of bacteria, fungi and viruses, including Hepatitis C, Pseudomonas, Legionella, HIV-1 and many other potentially dangerous microorganisms
- » One-step hospital-level disinfectant cleaner

ITEM #F447 (CASE OF 4 GALLONS)

XACTIMATE® CODE: WTR GRM

MILGO SR

Deodorizer concentrate.

Milgo SR is the best choice for deodorizing stain-resistant carpets. Milgo SR deodorizes porous materials like carpet, pad, subfloors, drywall, upholstery, and other affected materials. Add Milgo SR to the laundry to deodorize fabrics in the washing machine! Each bottle makes up to 16 gallons of deodorizing solution.

ITEM #F448 (CASE OF 4 GALLONS)

XACTIMATE® CODE: CLN DODR



DRITEC® 4000i

SMARTEST, SIMPLEST COMPACT DESICCANT

IDEAL FOR DRYING:

- **DENSE MATERIALS**, e.g., hardwood, brick, plaster and lath
- **IN COOL ENVIRONMENTS** - basements, crawlspaces and garages

» SMART CONTROLS SIMPLIFY DESICCANT DRYING

- Optimized performance
- Temperature and humidity display
- Humidistat and RH minimum setpoint to prevent overdrying
- Pints-per-day display

» SMALLER MACHINE/FOOTPRINT

» COMPACT AND VERSATILE

- Run on a single 120 V circuit for basic operation or use 2 cords to optimize performance
- Highly portable – operates on its back for low-clearance areas (great for crawl spaces!)
- Includes onboard storage for accessories

» DURABILITY

- Sturdy – designed for everyday restoration use
- PTC heaters deliver better efficiency, safety, and longer life

ITEM #F533

XACTIMATE® CODE: WTRDHMD



PROGRAMMABLE HUMIDISTAT



ONBOARD STORAGE



**The simple tool
for difficult drying.**

ACCESSORIES INCLUDED:

- Reactivation out duct ring
- Reactivation out heat-resistant ducting, 6 in. diameter, 20 ft. length
- Air inlet duct ring
- Process air outlet adaptor assembly

OPTIONAL ACCESSORY:

- #F536 – 16 in. layflat ducting

SPECIFICATIONS:

PROCESS AIR	395 CFM
TESTED REACTIVATION AIR	65 cfm
WATER REMOVAL (AT 80°F/60% RH)	118 pints per day
DIMENSIONS (W x H x D)	21.14 x 33.13 x 20.25 in. (Handle upright = 42. 250 in.)
WEIGHT	95 lbs. 43.1 kg
CONSTRUCTION	Powder-coated steel
POWER	120 V / 60 HZ
AMPS (AT 80°F/60% RH)	Circuit 1: 11.0; Circuit 2: 10.0
BEST IN INDUSTRY LIMITED WARRANTY	7 years for the body 2 years on the rotor 1 year parts & labor
XACTIMATE CODE	WTRDHMD

MOISTURE METERS

THE PROTIMETER PRODUCT LINE

- » Durable, restoration-ready housings and components
- » Fast and accurate readings
- » Two year no-hassle warranty
- » 48 hr turnaround on service
- » On-line training videos available
- » **PROVEN HISTORY** - Surveymaster is one of the world's bestselling dual function moisture meters



A PROTIMETER MMS2

Detect humidity, temperature, and moisture levels using intuitive full-color user interface. Offers three different detection technologies, plus non-contact IR temperature measurement.

ITEM #F488

B MMS2 RESTORATION KIT

Includes the Hammer Electrode and pins, short Quikstick ST, HD MC probe, deep wall probes, cal check, and data download cable, software and instructions for data point logging, all packed in a rugged carry case.

ITEM #F489

C RESTORATION KIT CASE

Rugged ABS plastic case with pre-fitted foam inserts. Organizes and protects your valuable equipment.

ITEM #F359

D PROTIMETER SURVEYMASTER

Provides pin and pinless measurements. Use to distinguish sub-surface from surface moisture and zero in on problem areas. Color-coded LCD and LED display. Also works with Hammer Probe (G).

ITEM #F522

E PROTIMETER TECHNICIAN'S KIT

Get the HygroMaster 2 (F), Surveymaster (D) and Hammer Probe (G) together in a durable ABS case. Equips the technician with everything required to read ambient conditions and measure moisture content of materials.

ITEM #F560

New!

F PROTIMETER HYGROMASTER 2

Fast and efficient thermo-hygrometer calculates specific humidity, dew point, WME and more. It even includes a non-contact IR surface temperature probe.

ITEM #F559

G PROTIMETER HAMMER PROBE

Determine moisture content in subfloors, frame materials and drywall. Penetrate easily up to a depth of 1.38 in. (35 mm). Stainless steel shaft, back stop and base, and built-in wrench for easy pin replacement.

ITEM #F309

H PROTIMETER AQUANT *New!*

Ideal for quick non-invasive detection of moisture up to 1 in. below surfaces, including hard surfaces such as vinyl and tile.

ITEM #F523

I PROTIMETER QUIKSTICK™

Improved sensor designed to enhance the performance of MMS Plus (F337) and MMS2 (F488/489) models. Note: Compatible with certain meters only. Visit the QuikStick product page in the Instruments section at www.dri-eaz.com.

ITEM #F394

J PROTIMETER SHORT QUIKSTICK™ ST

Use this convenient short, fast-response humidity sensor with the Protimeter MMS2 (F488). Provides quick, reliable temperature and relative humidity readings. Compatible with the MMS Plus (F337) back to v3.15.

ITEM #F528

DRI-EAZ HYDROSENSOR® I & II

Save your knees and back

Quickly map the migration of moisture in carpet and pad. Both models feature rugged stainless steel tubing and retractable points with a 31 in. reach. HydroSensor II includes a telescoping handle that collapses to 21 in. for easy toolbox storage.

1 HYDROSENSOR I
ITEM #F245

2 HYDROSENSOR II
ITEM #F251



DRI-EAZ GPP
CALCULATOR APP



FREE!





PUTTING SCIENCE TO WORK

THE RSA DIFFERENCE

- **RSA teaches more courses and students in more locations** than any other entity in the industry
- **RSA employs the most respected and experienced instructors IN THE INDUSTRY**
- **RSA has the ONLY FULLY PEER-REVIEWED CURRICULUM in the industry**, professionally edited, designed and printed class workbooks— of lasting value to your company’s training library
- **RSA can deliver standard or customized courses at your facility based on your needs**
- **RSA offers free technical support** to your organization and to all alumni

CURRENT RESTORATION SCIENCES ACADEMY COURSES

Restorative Drying 101 (WRT)

3 DAYS/2 CECs (IICRC)
Essential introduction to water damage restoration. (Certification: IICRC Water Restoration Technician)

Restorative Drying 201 (ASD)

4 DAYS/2 CECs (IICRC)
In-depth study of the science of drying and real-world hands-on practice and application with drying a structure. Full course manual provided, plus marketing and business support tools. (Certification: IICRC Applied Structural Drying. Prerequisite: WRT)

Restorative Drying 101/201 Combined (WRT/ASD) 5 DAYS/2 CEC (IICRC)

Combines the complete Water Restoration Technician and Applied Structural Drying courses into a single 5-day program.

Restorative Drying 301

1 DAY/1 CEC (IICRC)
Comprehensive look at advanced structural drying concepts and new drying technologies and processes.

Fire and Smoke Restoration 151 (FSRT)

2 DAYS/2 CECs (IICRC)
Thorough coverage of smoke odor removal, structure cleaning, surface preparation and finishing and contents cleaning. (Certification: IICRC Fire and Smoke Restoration Technician)

Odor Control Technician 111 (OCT)

1 DAY/1 CEC (IICRC)
Overview of odor sources, detection processes, equipment, chemical options and applications, including proper odor removal techniques for common problems. (Certification: IICRC Odor Control Technician)

Carpet Cleaning Technician 130 (CCT)

2 DAYS/2 CECs (IICRC)
Fundamentals of carpet cleaning, including the 5 methods most often used in carpet cleaning. Also includes analysis of fiber types, carpet construction and mill dyeing, soil characteristics and the chemistry of cleaning. (Certification: IICRC Carpet Cleaning Technician)

Upholstery and Fabric Cleaning (UFT)

New!

2 DAYS/2 CECs (IICRC)/RSA CERTIFICATION
Covers upholstery fiber categories, fiber identification and testing, manufacturing of the fiber and fabric, chemistry of cleaning, upholstery cleaning methods, protections, spotting, and potential problems. Students will learn about fabric and fiber content, as well as furniture construction to identify limitations and potential cleaning related problems on a given piece of upholstery.

ESTIMATING 280 BASIC AND INTERMEDIATE, HANDS ON

3 DAYS/2 CECs (IICRC)
Acquire the knowledge and practical skills necessary to quickly create accurate estimates using a variety of Xactimate® tools. Class is available as a hands on, dynamic learning event, held during a live water loss! Students completing this program will be prepared to challenge the Xactimate Level 1 and 2 user certification exams offered through Xactware.

TRAUMA CLEANUP 211

2 DAYS/2 CECs (IICRC)/RSA CERTIFICATION
Learn industry best practices for efficient restoration of structures and contents after a trauma event. Program covers technical processes, psychological issues and regulatory requirements related to performing trauma work. Participants will conclude the program with a step-by-step case study to reinforce key objectives. Examination and certification available through the RSA.

MICROBIAL REMEDIATION 110

3 DAYS/2 CECs (IICRC)/RSA CERTIFICATION
MR-110 is an introductory course in mold and sewage remediation, incorporating hands-on training by an IICRC certified Master Restorer. Attendees will acquire the necessary skills and knowledge required to work as technicians on projects involving mold and sewage remediation.

APPLIED MICROBIAL REMEDIATION (AMRT)

New!

4 DAYS/2 CECs (IICRC)/RSA CERTIFICATION
Prerequisite: (IICRC Certification in WRT) Covers mold and sewage remediation techniques for individuals engaged in property management, property restoration, IEQ investigations, and more with an emphasis on teaching mold and sewage remediation techniques to individuals who will perform these procedures in the field. Course graduates will be adequately equipped to perform remediation services, while protecting the health and safety of workers and occupants.

Restoration Sciences Academy Campuses

- **RSA Northwest Campus**
— Claude Blackburn Education Center
Burlington, Washington
- **RSA Southeast Campus**
— James C. Myers Education Center
Nashville, Tennessee
- **RSA United Kingdom Campus**
— Newport Pagnell, England

For current RSA course schedules, locations, and easy registration, visit WWW.RSA-HQ.COM



OR SCAN TO SEE OUR CURRENT COURSE LIST

RSA CAN ALSO CUSTOMIZE COURSES
TO SPECIFICALLY ADDRESS YOUR COMPANY’S NEEDS.
CALL RSA AT 800-932-3030 FOR MORE INFO.



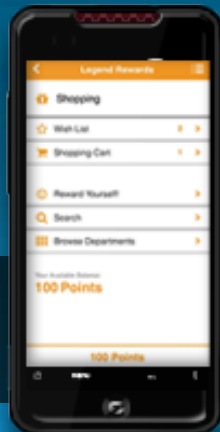
Get the app!

www.Legendrewards.com

iPhone



Android



It only takes five minutes...

*Find out how Legend Rewards
can benefit your business!*

Legend Rewards has **awarded millions of points to customers like you!** Our unique customer loyalty program lets you **redeem points** for electronics, movie DVDs, sporting goods, video games, home & garden items, tools, and much more. Watch for Legend Rewards certificates in product boxes for Dri-Eaz, ProRestore, Prochem, Chemspec and Sapphire Scientific products to get your rewards.

**DOWNLOAD THE
APP TODAY!**



Scan QR code
and register
from your
mobile device



SapphireSCIENTIFIC

