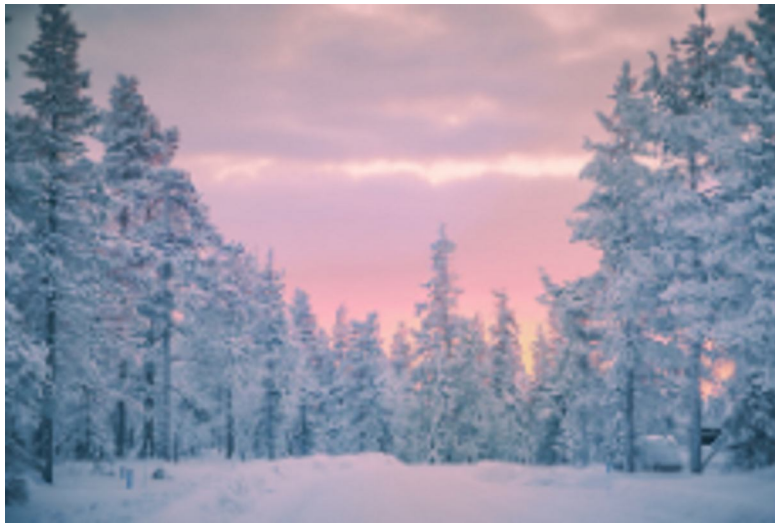


# COMPUTER USERS OF ERIE

CUE Newsletter – January 2021 (Volume 38 Number 1)



## January CUE Meeting

The next CUE members' meeting is on Thursday January 21<sup>st</sup> at 7:00 PM, by a Zoom link in your email. No special details are available yet for the meeting. There may be a discussion about 5G. Look for details to be announced at the CUE website.



Visit the CUE Website at:

[www.cuerie.com](http://www.cuerie.com)

CUE is a member of APCUG



An International Association of Technology & Computer User Groups

# CUE Calendar



Calendar events are subject to change. SIG stands for Special Interest Group.  
(look for notices outside of the newsletter for delays or special news on meetings)

**CUE Membership Meetings** (typically 3<sup>rd</sup> Thursday of each month)  
Thursday January 21<sup>st</sup> at 7 PM  
Thursday February 18<sup>th</sup> at 7 PM

**Beginner's User Group (BUG) SIG Meetings**  
To Be Scheduled Upon Request

**Digital Photo SIG Meetings** (typically 1<sup>st</sup> Saturday of each month except June/July/August)  
Saturday January 2<sup>nd</sup> at 9:30 AM  
Saturday February 6<sup>th</sup> at 9:30 AM

**Genealogy SIG Meetings** (typically 1<sup>st</sup> Tuesday of each month)  
Tuesday January 5<sup>th</sup> at 7 PM  
Tuesday February 2<sup>nd</sup> at 7 PM

**MAC SIG Meetings** (typically 2<sup>nd</sup> Saturday of each month except June/July/August)  
Saturday January 9<sup>th</sup> at 9:30 AM  
Saturday February 13<sup>th</sup> at 9:30 AM

**Smartphone & Tablet SIG Meetings** (typically 4<sup>th</sup> Monday of each month) (RSVP John Fair)  
Monday January 25<sup>th</sup> at 7 PM  
Monday February 22<sup>nd</sup> at 7 PM

**Windows SIG Meetings** (typically 2<sup>nd</sup> Saturday of each month except June/July/August)  
Saturday January 9<sup>th</sup> at 1 PM  
Saturday February 13<sup>th</sup> at 1 PM

# CUE By-Laws Revision

The Constitution and By-Laws Review Committee (Janice Castro, John Fair, Don Grim, and Lee Williams) proposed some minor changes to the By-Laws and no changes for the Constitution.

The Constitution and By-Laws, with noted By-Laws revisions, are published in the November 2020 newsletter. The changes are basically describing the appointed position of Membership Chair. The CUE Board has already unanimously approved the changes.

The changes were available for a vote from CUE members on the web. On 12/5/20, the voting results were finalized with 41 "Yes" votes in favor of accepting the changes, and 0 "No" votes. That is an approval of 55.41% (41 out of 74 members). That is a majority vote. Therefore, the By-Laws changes are officially adopted.

## Holiday

Since there was no regular CUE meeting in December, and no Smartphone & Tablet SIG meeting in December, there will be no Secretary's Report and no Smartphone & Tablet SIG Report with this issue of the CUE newsletter. We hope you had a nice Holiday and wish you a happy and safe New Year!



# Spring Cleaning During Covid-19

By Lou Cioccio at Computer Users of Erie

Okay you know the drill, and you have been doing this since March, and it's become tiresome, as relief seems far away.

Things that were important to me was how many seconds in an hour, as where I worked before retirement, I had to use that in an equation on my job! So 3600 seconds was burned into my mind! Just like taking the trash out!

So here we are. It's past the holidays for most of us unless you are orthodox, then you are on another timeline!

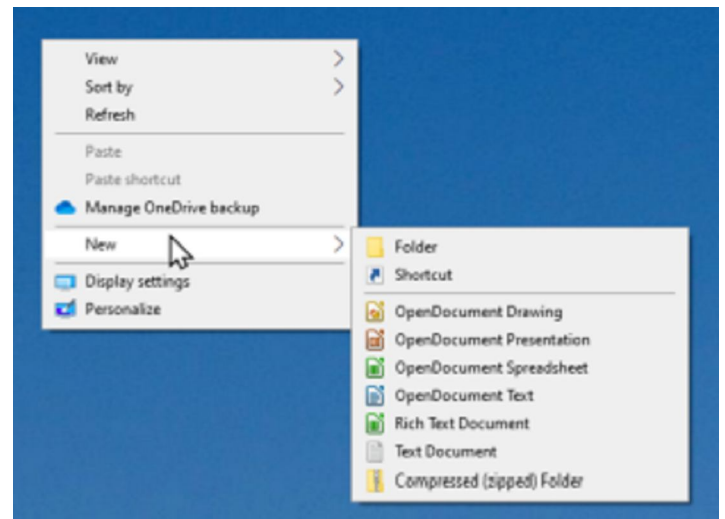
Let's look at speeding up our computer. A couple things come to mind but one that we rarely thing about is the clutter on our desktop. Every file system, that any Operating System uses, has limits whether its Mac OS X, Windows 10, or even Linux. Now when your computer boots up, it looks for the System files. The OS then, while it's loading, it's looking for all the disks that you may have anywhere, from one to many. That many will cause a slight slowdown but that really depends on how fast your computer is or how old it is!

Then it looks for the Desktop "FOLDER". Yes, the Desktop with the pretty background is a folder. So you got a bunch of files, and maybe some images, or a downloaded EXE or DMG file in there. Your computer has to scan (read) these so they appear on your desktop.

How can we cure that is by organizing those files into folders. Yes, make folders on your Desktop for now. Once you complete the task, you are not done. You

need to move them to their proper places: Images to Picture/Photos folder, Text and Doc files to your Document folder. Ahh, you are getting the idea. Wait! What's that you say? I need quick access to those.

Well you do by making an Alias or Shortcut from the Desktop Folder. Usually in Windows you need to right click in the desktop and a dropdown folder will appear.



So we are looking for a shortcut and an explorer window will open, and click on the shortcut. That's what's needed on the Desktop as the OS is not reading a myriad of files only the shortcut folder. Now the Desktop will come up quickly.

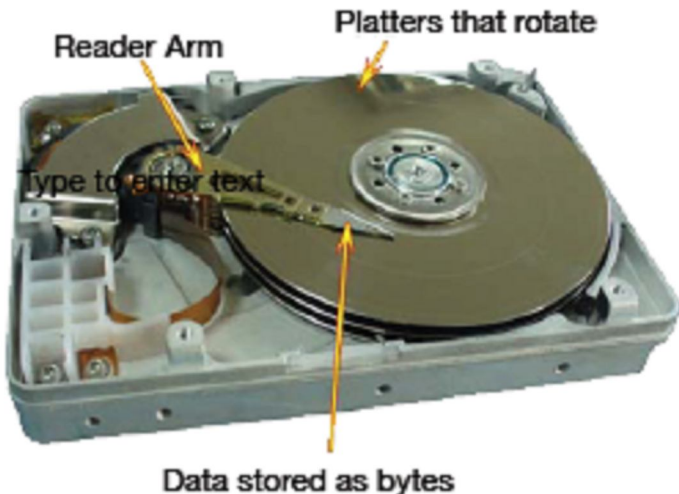
What else can we do? Maybe a little formidable but its hardware oriented. We can update the RAM Random Access Memory but you need to look at the computer to see how much RAM is installed. Another place is the manufacturer to see how much RAM I can install. Please be aware that there may be limitations on how much you can install.

## Spring Cleaning Continued

Apple is now soldering RAM and is no longer upgradeable by the user, and must be ordered at time of purchase, or, as Mac users know, BTO, Built To Order. It is a cost cutting feature for them. Others may follow but be aware the others, is what the particular hardware limitation of the Logic or Motherboard can handle.

If you are lucky enough to have Memory Sockets then you are fortunate that YOU can upgrade it yourself.

The next thing in speeding up that computer is the hard drive, as most us use a mechanical platter type of hard drive. Think of those 45 rpm records you used to play. That is basically what is in your hard drive.



So those drives can have a speed of 5400 rpm to as high 10,000 rpm's. Most laptops have 5400 rpm and desktop computers usually have 7200 rpm. Also is a concern of empty or free space. 20% left will give a slower drive. What that is from other articles that I wrote: RAM is used for the Operating System then for apps, after that,

it uses (Virtual Memory) pages or blocks of your hard drive which is much slower!

Now we come to a Solid State hardDrive or, as we know them as SSD's, which can, and will, breath new life in that old computer or laptop, and extend the useful life.

There are many ways to "clone" that SSD from the mechanical hard drive. Some are built in the operating system. Windows has a creation tool that you can use if you have activated your copy of Windows and, in Mac OS X, there is migration assistant. In fact, Migration Assistant on the Mac can copy most files from your Windows drive, except for the Windows apps, since they do not run natively on the Mac without the help of third party software.

Another program for Windows is a utility called Macrium Software that has a free edition for home use.

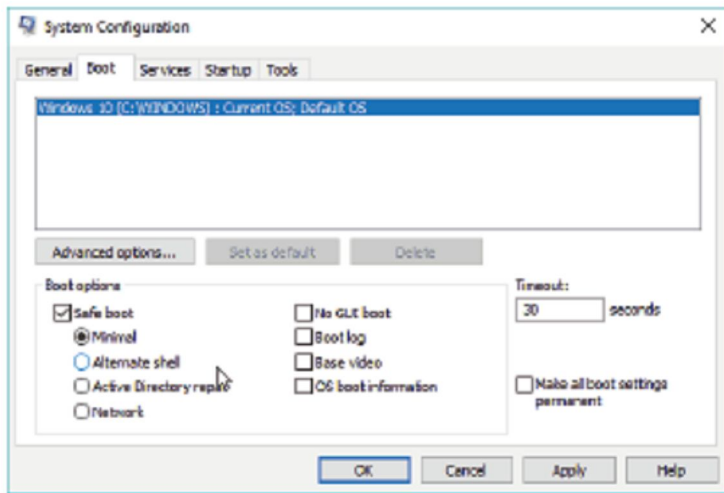
The rule of thumb on cloning a drive is to get the same size drive but on Windows Macrium, it can solve any "short comings" if the drives are not equal.

Another speed up is software, that you never use, to get rid of it. It's taking up space so that Virtual Memory is more accessible to use. Remember the free space that you should have.

Empty the trash or recycle bin. Even though the system allows you to write over it, it is still being scanned and loaded on startup. And speaking of startup, use the keyboard shortcut "Windows Key + R" and the "Run" window will open. In the text

## Spring Cleaning Continued

box, write "msconfig" and press Enter or OK and the MsConfig window will open.



You want to select the startup tab to see what files are loading and maybe deselect ones that are not needed. You need to do some research, or ask the group, what files are needed and which ones are bloat. You DO NOT WANT TO CHECK OFF any one UNLESS you know what you are doing. Other wise you may have a system failure and we would not want that to happen.



**WARNING WARNING WARNING**

Certain file systems may require defragging or optimizing your files. Newer OS's may automatically do that and others you only need to repair permissions on keeping your OS running smoothly.

One thing I did not mention is the Registry. Here is a link from Microsoft:

<https://support.microsoft.com/en-us/help/243723/removing-invalid-entries-in-the-add-remove-programs-tool>

This on the next page:

“Removing Invalid Entries in the Add/Remove Programs Tool”

“IMPORTANT: This article contains information about modifying the registry. Before you modify the registry, make sure to back it up and make sure that you understand how to restore the registry if a problem occurs. For information about how to back up, restore, and edit the registry, click the following article number to view the article in the Microsoft Knowledge Base:”

“256986 Description of the Microsoft Windows Registry”

“Summary”

“To add, remove, or change a program on a Windows 2000-based computer, use the Add/Remove Programs tool in Control Panel. Occasionally, a program may not be uninstalled completely and a reference to the program may remain in the Currently installed programs dialog box. Changing or removing a program may result in a number of messages about files that cannot be located, but are needed to complete the change or uninstallation. This article describes how to remove these invalid entries from the Add/Remove Programs tool.”

# Spring Cleaning Continued

"More Information"

"WARNING: If you use Registry Editor incorrectly, you may cause serious problems that may require you to reinstall your operating system. Microsoft cannot guarantee that you can solve problems that result from using Registry Editor incorrectly. Use Registry Editor at your own risk."

"The following steps remove only the registry entries related to a program as it appears in the Add/Remove Programs tool. To completely uninstall a program that was not completely removed by clicking the Change/Remove button in the Add/Remove Programs tool, you need to clean up the physical directory structure on disk and in the registry also. Use extreme caution when you perform either of these tasks."

"To remove a program reference viewable in the Add/Remove Programs tool:"

"1. Start Registry Editor (Regedit.exe).  
2. Locate the following key:  
HKEY\_LOCAL\_MACHINE\SOFTWARE\Microsoft\Windows\CurrentVersion\Uninstall  
3. Locate the key to be deleted by locating the key name created by the program. If the name of the key is not apparent, browse through each key and note the value for DisplayName. This is the

viewable string in the Add/Remove Programs tool.

4. Using the Registry menu, export the selected registry key to make a backup. Store the .reg file in a safe location in case you need to import it at a later date.

5. Delete the selected registry key and its values. Do not delete the entire Uninstall key.

6. Quit Registry Editor.

7. Verify that the reference in the Add/Remove Programs tool is no longer visible."

"You may have to contact the manufacturer of the program you want to remove if you need to clean up the disk and registry entries. The above procedure does not remove all the files and registry entries used by the program, it removes only the reference in the Add/Remove Programs tool."

"Last Updated: Aug 19, 2020"

So hopefully this will help speed up your computer. Windows 10 and Mac OS X has features on re-installing the OS without losing your apps and data. But sometimes it may be prudent to do a clean install and reload your apps. Keep in mind, some apps may need to be deactivated and reactivated when re-installing, otherwise you may be on the phone!!



# Understanding Storage On About This Mac

By Lou Cioccio at Computer Users of Erie

Many of you may be thinking about buying a new Mac computer, albeit a Laptop or Desktop. There are two things that you should be aware of on the Macintosh scene:

1. Memory is soldered on the Logic, aka Motherboard
2. SSD hard drive is also soldered on the Motherboard

With that being informed, you need to understand the requirements for the use of the computer. If we go for requirements, most OS software gives the minimum that is needed. That minimum is like a two legged stool and you may feel hobbled. So let's look at Big Sur from Apple and Windows as an example.

General Requirements:

**OS X 10.9 or later**

4 GB of memory

35.5 GB available storage on macOS Sierra or later

Some features require an Apple ID; terms apply

Some features require a compatible internet service provider; fees may apply

**Windows 10**

Processor: 1 gigahertz (GHz) or faster processor or SoC

RAM: 1 gigabyte (GB) for 32-bit or 2 GB for 64-bit

Hard disk space: 16 GB for 32-bit OS or 20 GB for 64-bit OS

Graphics card: DirectX 9 or later with WDDM 1.0 driver

Display: 800 x 600

You have to be kidding me!! Either one of those in any one computer, either a Mac or Windows, will be calling for a plasterer or carpenter to help them fix it! So through out the minimum, you need to be forward thinking as to what I am going to do.

Let's look at what I am running on this laptop:

Processor Name: Quad-Core Intel Core i7

Processor Speed: 2.8 GHz

Number of Processors: 1

Total Number of Cores: 4

L2 Cache (per Core): 256 KB

L3 Cache: 6 MB

Hyper-Threading Technology: Enabled

Memory: 16 GB

SSD: 500 GB

This type is more than enough for me to process images and movie files, maybe not at the same time. It is somewhat dated, but maxed out, with RAM, but the SSD can be upgraded for a mid 2015 computer. Again, you need to future proof it for what you will be doing down the road of using that computer.

For RAM or Random Access Memory, this is volatile memory this is what happens

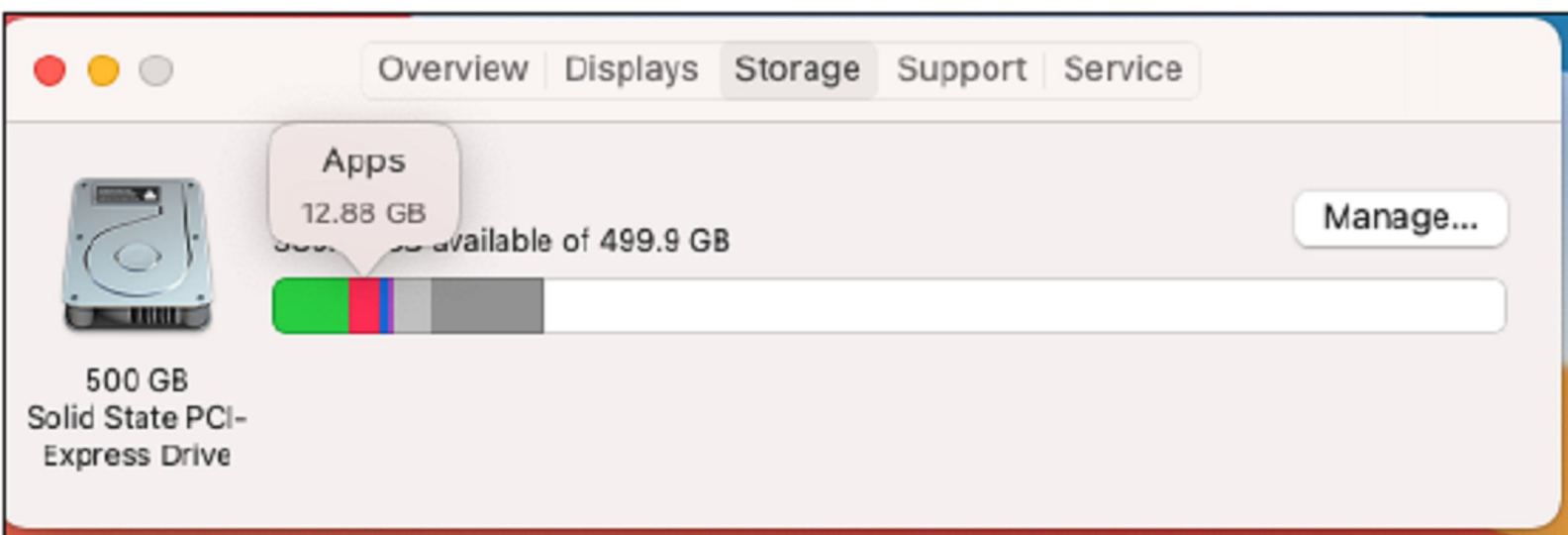
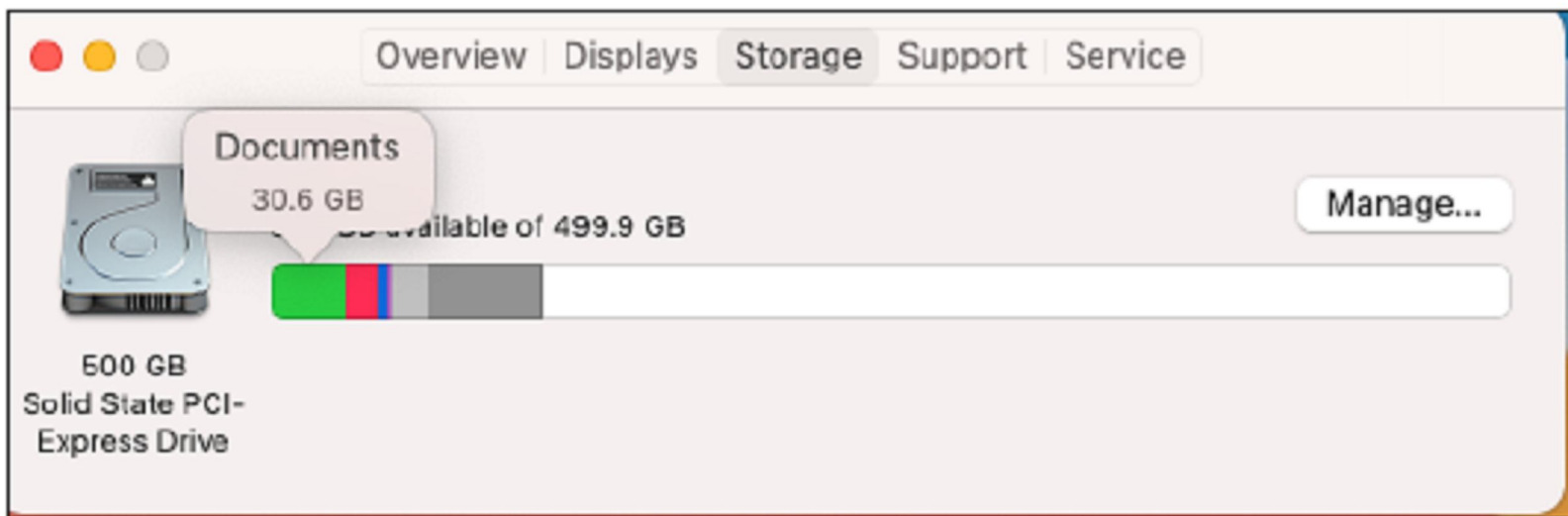


## Understanding Storage Continued

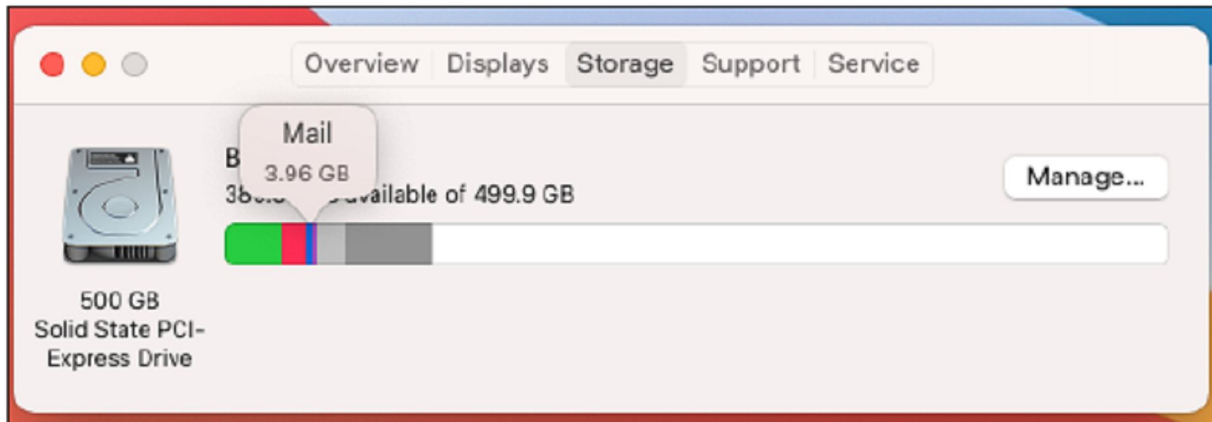
when you boot up or start up your computer. It's the first thing that the OS Operating System sees and what it's going to access. Once it accesses that RAM, whatever else is left for any apps that you run, and when that runs out, it starts paging sections of your precious hard drive space that's available. Hence you do need some hard drive space!

One of the nice things on Macintosh, or Mac computer, you can visually see what is stored on your hard drive. Windows has a similar feature with properties on drive C.

Let's look at the first graph and you can see the size of the drive and where I have certain things stored, i.e. mail, documents, OS, etc.



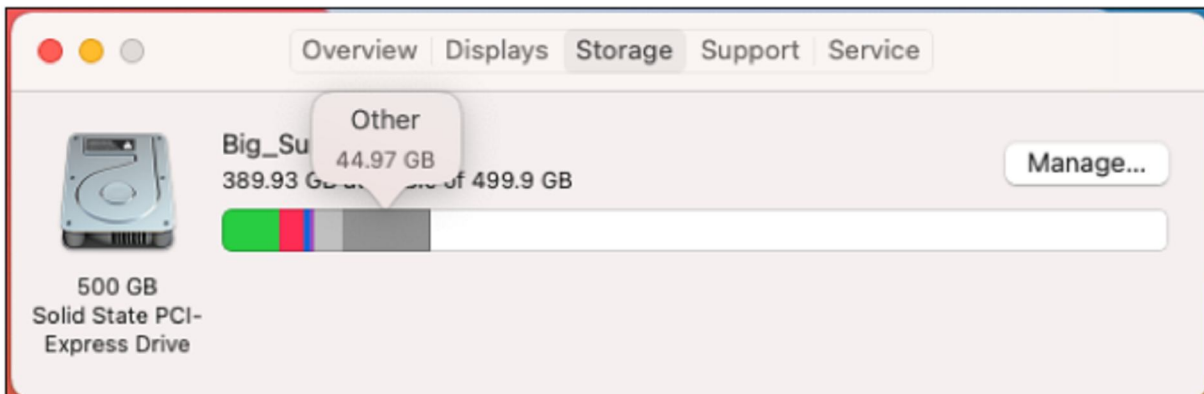
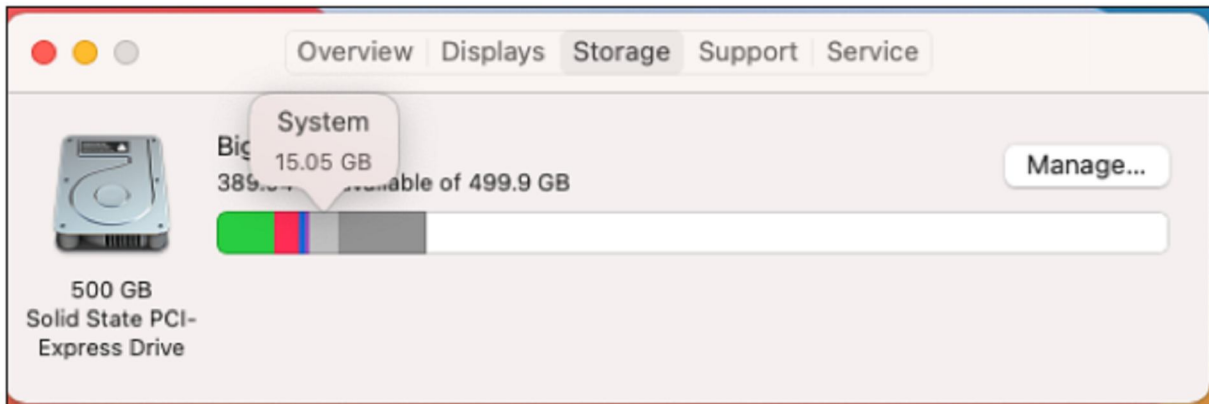
## Understanding Storage Continued



You can see Documents take up 30.6 GB, Apps take up 12.88 GB, Mail takes up 3.96 GB and the Operating System takes up 15.05 GB. Hmm, I have 16 GB RAM!!

Yikes! Well not all of that is being used at one time!

Here is the OS in this frame below.



On "Other", I often wonder about that but it's stuff that may not be able to categorize.

So when purchasing a new computer please have these considerations in mind. You may be using it for email and may be on line buying, but you may get into writing

an article for CUE, or a myriad of other endeavors.

So think ahead!

Lou Cioccio  
Expert on Gerunds and Dangling  
Participles.

## Genealogy Report for 12/1/20 SIG Meeting

The Genealogy SIG organized by Sue Mueller met on December 1, 2020 via Zoom. We had 13 members in attendance.

A reminder that Helen Shimek will speak on Ancestry's ThruLines and similar tools on 23 and Me at our January meeting. She may also be open to doing Zoom meetings in understanding DNA. Further details to come.

Susan Mueller made us all aware of a website she subscribes to: Genealogy Events Calendar | Live - Virtual - Conferences - Seminars - Workshops and more - ([conferencekeeper.org](http://conferencekeeper.org)). They will send you a list of genealogy related subjects that will be happening every Monday.

Janice Castro mentioned that she would like to start writing about her experiences during COVID-19 for future generations

and asked if anyone else would like to do so.

Erie Cemetery was discussed and how helpful they are when it comes to finding a grave. It was also mentioned that they have a brochure that you can do a walking tour of the cemetery. They did have guided tours at one time, but it is believed they are closed while COVID-19 is going on.

It was discussed what to use to safely clean a stone. Several members have attended a class, but you may also watch them online. D-2 and Orvus Horse Shampoo is also a safe alternative.

John Szympruch mentioned that he had watched a very interesting show on The History Channel. The Cheddar Man: Mesolithic Britain's blue-eyed boy, sounded very interesting.

Submitted By: Robin Boyd

GENEALOGY CONFERENCES, EVENTS, CALLS-FOR-PAPERS, CONTESTS, GRANTS & SCHOLARSHIPS, TOURS & CRUISES, AND MORE!



# ConferenceKeeper.ORG

the most complete collection of Genealogy events online!

HOME ▾

CONFERENCES ▾

CALENDAR ▾

LOCATIONS ▾

OPPORTUNITIES ▾

WHAT'S NEW ▾

GET UPDATES!

SUBMISSIONS ▾

CONTACT

## A Note from the Editor

As usual, feel free to contribute information for the CUE newsletter. Whether it is small, large, an article, a tip, information, or pictures, you can send it to me and I will plan to include it in the newsletter. You can reach me at [grimcyber@yahoo.com](mailto:grimcyber@yahoo.com).

Remember that you can find recent news at the CUE website ([cuerie.com](http://cuerie.com)). At times,

the website will have more recent news than the CUE newsletter since the website is updated continuously and the newsletter is updated monthly.

Stay Safe!

Editorially Speaking, Don Grim



**It's always easier to find a black cat in a snow storm!**

**COMPUTER USERS OF ERIE  
MEMBERSHIP APPLICATION**

PLEASE PRINT

Today's Date \_\_\_\_\_

<b>Last Name</b>	<b>First Name</b>
<b>Address</b>	
<b>City, State</b>	<b>Zip</b>
<b>Home Phone</b>	<b>Cell Phone</b>
<b>Your Email</b>	

The yearly dues are payable in August of each year. The dues are \$24 annual.  
For NEW members only, when you join outside the annual cycle your initial dues are based upon the month you join. Follow the schedule below.

August \$24	September \$22	October \$20	November \$18
December \$16	January \$14	February \$12	March \$10
April \$8	May \$6	June \$4	July \$2

Information provided on this form will be placed into a CUE Membership Directory

---

*What is your Computer or Device: (Circle)*  
*Windows Mac Android iPhone iPad*  
*Tablet Linux Other*

---

*What is you level of expertise? (Circle)*  
*Novice I know some I want to learn more*  
*Expert Geek*

---

Send your completed application to:

Computer Users of Erie

PO BOX 8941

Erie, Pa 16505-0941

What do you wish to gain by joining Computer Users of Erie?

---

Student membership is just \$15 per year (provide proof of student status)

# CUE Officer Information

## Officers

President	Paul Francis	<a href="mailto:pdflyer@roadrunner.com">pdflyer@roadrunner.com</a>	814-882-1175
Vice President	John Fair	<a href="mailto:johncfair@gmail.com">johncfair@gmail.com</a>	814-474-3055
Secretary	Don Grim	<a href="mailto:grimcyber@yahoo.com">grimcyber@yahoo.com</a>	814-461-8289
Treasurer	Janice Castro	<a href="mailto:jcastrocue@outlook.com">jcastrocue@outlook.com</a>	312-543-9128

## At-Large Board

Hal Kelley	<a href="mailto:hal_kelley@outlook.com">hal_kelley@outlook.com</a>	814-836-1803
Suzanne Matthews	<a href="mailto:pdxmatthews@aol.com">pdxmatthews@aol.com</a>	814-790-4185
Susan Mueller	<a href="mailto:suepasta@roadrunner.com">suepasta@roadrunner.com</a>	814-622-1262
David Runser	<a href="mailto:ml350djr@gmail.com">ml350djr@gmail.com</a>	814-873-1740
Conrad Sobczak	<a href="mailto:hatsob@verizon.net">hatsob@verizon.net</a>	814-899-9699

## Alternate At-Large Board

Lou Cioccio	<a href="mailto:lcioccio@mac.com">lcioccio@mac.com</a>	814-868-1320
Marsha Keller	<a href="mailto:dekmak43@gmail.com">dekmak43@gmail.com</a>	814-449-4682

## Special Interest Groups

Beginner's (BUG)	Lou Cioccio	<a href="mailto:lcioccio@mac.com">lcioccio@mac.com</a>	814-868-1320
Digital Photo	Lou Cioccio	<a href="mailto:lcioccio@mac.com">lcioccio@mac.com</a>	814-868-1320
Genealogy	Susan Mueller	<a href="mailto:suepasta@roadrunner.com">suepasta@roadrunner.com</a>	814-622-1262
MAC	Lou Cioccio	<a href="mailto:lcioccio@mac.com">lcioccio@mac.com</a>	814-868-1320
Smartphone & Tablet	John Fair	<a href="mailto:johncfair@gmail.com">johncfair@gmail.com</a>	814-474-3055
Windows	Lou Cioccio	<a href="mailto:lcioccio@mac.com">lcioccio@mac.com</a>	814-868-1320

## Other Resources:

CUE Historian	Tom Kuklinski	<a href="mailto:tkuklinski@gmail.com">tkuklinski@gmail.com</a>	814-746-9165
DOS Information	Don Grim	<a href="mailto:grimcyber@yahoo.com">grimcyber@yahoo.com</a>	814-461-8289
Editor	Don Grim	<a href="mailto:grimcyber@yahoo.com">grimcyber@yahoo.com</a>	814-461-8289
Librarian	Tanya Mattson	<a href="mailto:449t1m@gmail.com">449t1m@gmail.com</a>	814-833-1404
Membership Chair	John Fair	<a href="mailto:johncfair@gmail.com">johncfair@gmail.com</a>	814-474-3055
Webmaster	Tom Kuklinski	<a href="mailto:tkuklinski@gmail.com">tkuklinski@gmail.com</a>	814-746-9165

## CUE Disclaimer

The Computer Users of Erie (CUE), a nonprofit affiliate of APCUG, is not connected with, nor does it represent the interests of such organizations as IBM, Apple, Texas Instruments, Microsoft, or any other manufacturer or vendor, nor can it assume responsibility for the accuracy or misrepresentation of materials or statements found in advertisements, articles, announcements, or presentations appearing in its newsletter or at CUE sponsored meetings. The members of the CUE Board of Directors, committees, and SIGs are volunteers giving of their time and energy to assist CUE members through education. CUE shall not be held liable in name or performance for the outcome of activities or agreements to provide services offered by any person in the name of CUE. CUE welcomes comments, letters, original articles and programs for its newsletter. Such materials may be submitted to: CUE Editor, P.O. Box 8941, Erie, PA, 16505-0941. Also you can email [grimcyber@yahoo.com](mailto:grimcyber@yahoo.com). Permission is hereby granted to other nonprofit computer user groups to reprint articles appearing herein, unless specifically restricted, provided credit is given to both its author, if known, and its original source.

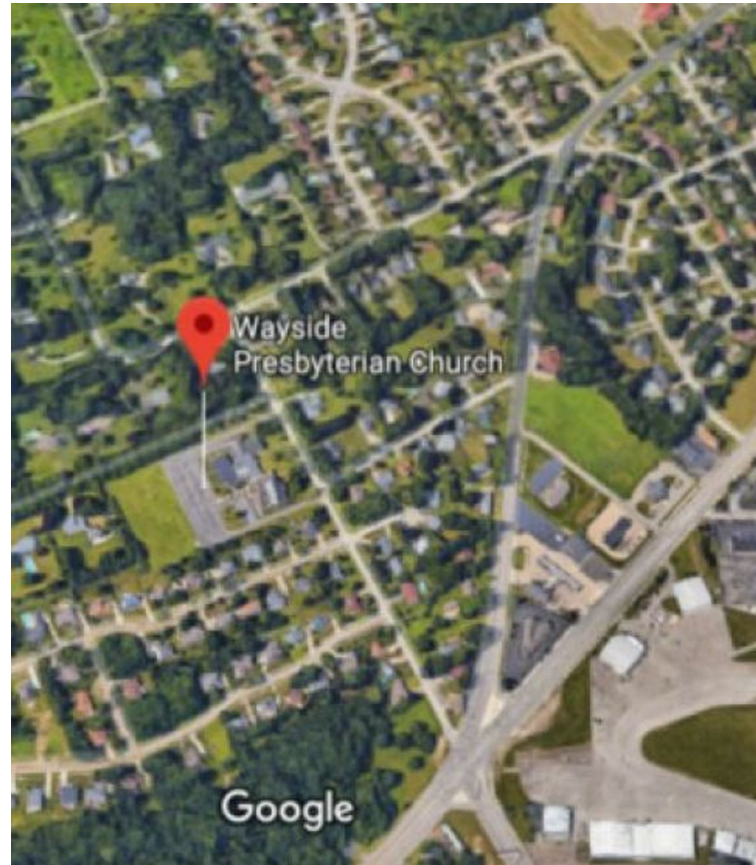
# Directions to Wayside Presbyterian Church for CUE Meetings

Wayside Presbyterian Church, at 1208 Asbury Road, is approximately three blocks north of the intersection of Asbury Road and Route 5. This intersection is at the northwest corner of the Erie International Airport property. Following Asbury, turn left at the first marked driveway for the church. During the afternoon winter schedule (10:00 AM for the months of November, January, February and March), entry is through the two sets of blue double doors. Use the buzzer to gain entry if the doors are locked. During the normal evening schedule (7:00 PM the remaining months) use the double doors on the south side of the Christian Education wing. Signs are posted in the building to direct you to the meeting room.

**From West of Erie International Airport:** Follow Route 5 to the intersection of Asbury and Route 5. Turn hard left onto Asbury Road. Look for the church on the left approximately 3 blocks north of the intersection.

**From South of Erie:** Take Interstate 79 north to the 26th Street (Route 20) Exit. Bear left onto 26th Street (Route 20) west. Follow Route 20 about 3.4 miles west to Asbury Road. Turn right (at the Sheetz Gas Station) onto Asbury and follow it straight across Route 5. Look for the church on the left approximately 3 blocks north of the intersection.

**From East of Erie International Airport:** Follow 26th Street (Route 20) west to Asbury Road. Turn right onto Asbury and follow it straight across Route 5. Look for the church on the left approximately 3 blocks north of the intersection. OR, follow 12th Street (Route 5) west past the airport to Asbury Road. Turn right onto Asbury Road. Look for the church on the left approximately 3 blocks north of the intersection.



## About the Newsletter

The CUE Newsletter is published monthly by the Computer Users of Erie (CUE), an independent nonprofit computer user group, dedicated to the education and support of our members. The opinions expressed herein are those of the individual authors or the editor, and do not necessarily reflect the opinions of CUE. This publication is Copyright © 2018 by the Computer Users of Erie. All rights reserved. Permission to reprint is hereby granted to any Nonprofit Organization, as long as proper credit is given, or not restricted by the original author or source. **Advertising:** Advertising is welcome from both our members and commercial sources. For current advertising rates, please send an email to the Editor requesting a copy of the Ad Rates file. **Address Changes:** Any recipient of the newsletter is urged to submit a change of address notification to the Editor, either via US Mail to the address shown below, or (preferably) via email, so we may keep our records accurate. **Newsletter Exchange:** CUE welcomes newsletters from other user groups. If you would like to exchange newsletters, either by US Mail or via electronic (Internet) delivery, please send your newsletter to the address listed below. We will add your name to our mailing list and send you our newsletter in return. **Submissions:** Submissions are always welcome from our members or outside sources. Submissions may be articles, images, cartoons, etc. For first time authors, please request a copy of our Submissions Guidelines from the Editor, prior to submitting any items. This will help to eliminate publication delays. Submissions are due by the 5th of each month. **Correspondence:** General correspondence to CUE may be sent via US Mail to: Computer Users of Erie, PO Box 8941, Erie, PA 16505-0941 USA. Email to: [cuerie@gmail.com](mailto:cuerie@gmail.com). Editor Email to: [grimcyber@yahoo.com](mailto:grimcyber@yahoo.com).

# CUE Membership Benefits



As the largest computer users group in northwest Pennsylvania, CUE has served Erie and surrounding communities since 1982. CUE provides a forum for people to learn about computers and have fun doing so. The group meets the third Thursday each month, with the exception of the months of July and December. In July the group gathers for a picnic and December is the annual holiday party (dates vary). CUE meetings are at Wayside Presbyterian Church, 1205 Asbury Road, Erie. Meetings from April through October are at 7:00 p.m. From November through March, the meetings are at 10:00 AM in the morning, except it will stay at 7:00 p.m. during the Caronavirus Pandemic.

Our monthly meetings are open to the public regardless of age or ability. Many of our members are senior citizens who span a wide range of capabilities and interests but share a desire to know more about how to use computer related technology. Our role is to provide a forum for continuous learning from each other. CUE has a closed Google gmail group that is used to communicate with members and to post questions/problems to seek answers from the membership. Members pay an annual membership fee of \$24 to receive a membership directory, monthly newsletter, availability to monthly general meetings, and any of the Special Interest Group (SIGs) meetings, usually held in a member's home. Locations and times vary, so check the online EVENTS Calendar on the website for the latest information. SIG topics include:

- Digital photography [and photo safari]
- Genealogy
- Macintosh computers
- Computer troubleshooting
- Beginners users group (BUG)
- Handheld smartphones and tablets

CUE is a member of the Association of Personal Computer User Groups (APCUG). APCUG is an International, platform-independent, volunteer-run, non-profit organization devoted to helping member User Groups offer enhanced services to their members. Some of the membership benefits include:

- Speakers bureau
- Free virtual technology conferences
- Regional conference
- Push newsletter articles
- Discounts and special offers from vendors
- User group newsletters online

Find us online at <http://www.cuerie.com/>. And Facebook @cuerie

Computer Users of Erie  
PO Box 8941  
Erie, PA 16505-0941



Postmaster:  
Address Service Requested

Address label here