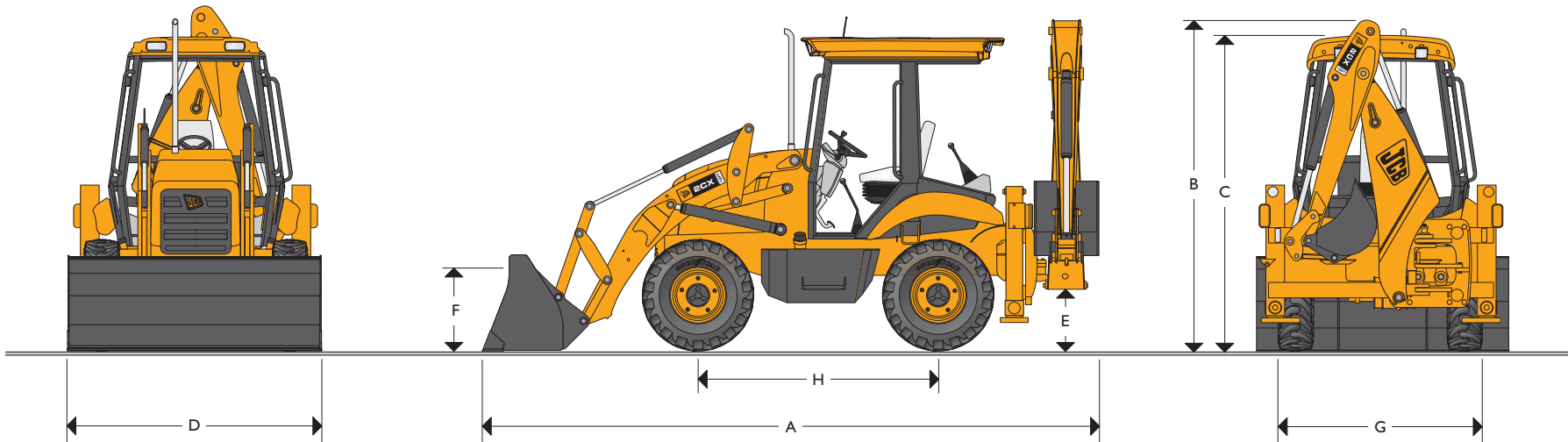




JCB BACKHOE LOADER | 2CX 12FT



JCB BACKHOE LOADER | 2CX 12FT

STATIC DIMENSIONS

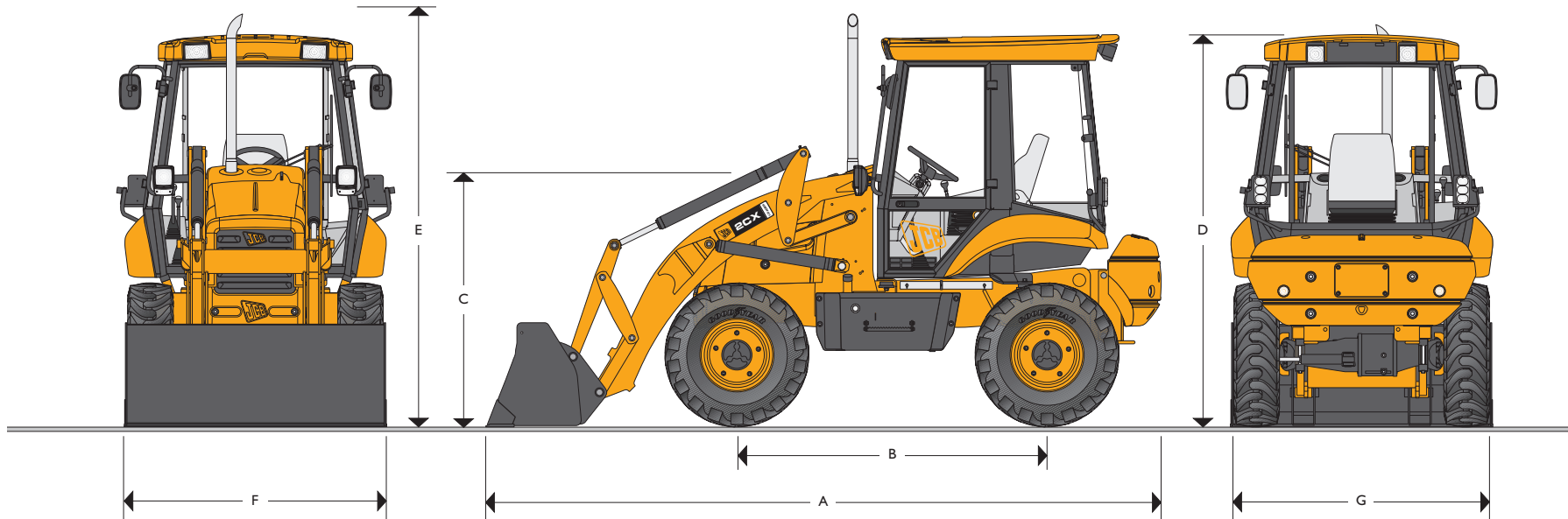
JCB 2CX 12FT features four wheel drive, four wheel steering, four equal sized tires, a heavy duty one piece mainframe, componentized driveline and fully enclosed engine compartment.

Machine model	2CX 12FT ft-in (meter)
A Transport length	17-9 (5.40)
B Transport height	10-0 (3.05)
C Height to top of cab/canopy	8-8 (2.65)
D Overall width with loader bucket	6-6 (2.00)

Machine model	2CX 12FT ft-in (meter)
E Ground clearance – transmission	1-2 (0.36)
F Ground clearance – front axle	1-1 (0.33)
G Width over tires	6-0 (1.84)
H Wheelbase	6-6 (1.99)



JCB BACKHOE LOADER | 2CX LOADER



JCB BACKHOE LOADER | 2CX LOADER

STATIC DIMENSIONS

JCB Loaders feature heavy duty one piece mainframe, componentized driveline and fully enclosed engine compartment.

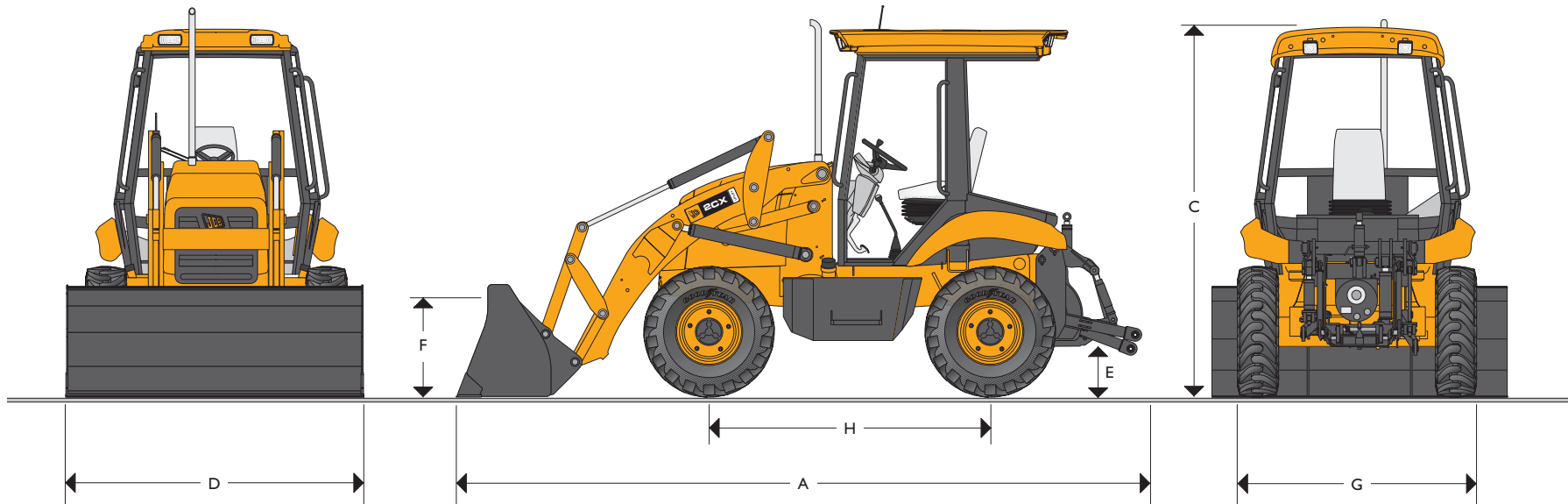
Machine model	2CX LOADER
	ft-in (m)
A Transport length	15-11 (4.86)
B Wheelbase	6-6 (1.99)
C Steering wheel center height	5-9 (1.76)
D Cab roof height	8-8 (2.65)

Machine model	2CX LOADER
	ft-in (m)
E Transport height	8-11 (2.72)
F Shovel width	6-7 (2.00)
G Overall width with loader bucket	6-0 (1.84)

Helping You Get the Job Done!



JCB BACKHOE LOADER | 2CX UTILITY



STATIC DIMENSIONS

JCB 2CX UTILITY features four wheel drive, four wheel steering, four equal sized tires, a heavy duty one piece mainframe, componentized driveline and fully enclosed engine compartment.

Machine model	2CX UTILITY
	ft-in (meter)
A Transport length	16-6 (5.04)
C Height to top of cab/canopy	8-9 (2.67)
D Overall width with loader bucket	6-6 (1.98)
E Ground clearance – transmission	1-2 (0.36)

Machine model	2CX UTILITY
	ft-in (meter)
F Ground clearance – front axle	1-1 (0.33)
G Width over tires	6-0 (1.84)
H Wheelbase	6-7 (2.00)

JCB BACKHOE LOADER | 2CX UTILITY



JCB BACKHOE LOADER | 2CX RANGE



JCB BACKHOE LOADER | 2CX RANGE

OPERATING WEIGHTS

Operating weight includes machine equipped with standard loader bucket and standard rear attachments, full fluid levels and SAE operator.

2CX	12FT	LOADER	UTILITY
	lb (kg)	lb (kg)	lb (kg)
	12144 (5509)	12787 (5800)	12663 (5744)
Add for:			
Cab	400 (181)	400 (181)	400 (181)

ENGINE

Four cylinder, direct injection diesel. JCB Dieselmox water pump, spin-on oil and fuel filters, water sediment separator prefilter, dual element air cleaner with internal precleaners. EPA Tier II emissions compliant.

Machine model	2CX
Displacement	268 cu. inches (4.4 liters)
Aspiration	Natural
Rated engine RPM	2200
Horsepower ratings	HP (kW)
SAE gross	75 (56)
SAE net	69.1 (51.5)
Maximum torque	lb-ft (Nm)
SAE net	223 (302)
Max. torque RPM	1200

STEERING

Power hydrostatic system utilizing the main hydraulic pump via a steering priority valve. In the event of engine failure, emergency steering is maintained. Two steering modes. Front wheel steer or four wheel steer chosen by selector lever.

Machine model	2CX
Steering axles	Front/Rear
Type	Hydrostatic
Steering turns – lock to lock	4.0
	ft-in (meter)
Turning circle – unbraked 4WS	23-9 (7.25)
Loader clearance – circle 4WS	30-8 (9.35)

ENGINE SUPPORT SYSTEM

Engine support system is designed for ease of daily checks, routine maintenance and longer service intervals.

Fuel type	Diesel.
Fuel filter	Replaceable cartridge plus water and sediment separator prefilter.
Air cleaner	Dual, dry element cyclonic type.
Oil filter and lubrication	Full flow, spin-on type filter.
Cooling system	Hot climate specification, pressurized 14.5 psi (1.0 bar) suction fan. Pressurized recovery tank with integral filler neck.

ELECTRICAL AND INSTRUMENTATION

12 volt negative ground, utilizing wiring and connectors meeting IP67/IP69 water ingress test standard. Central fuse panel located in operator area, 12 volt negative ground system.

Gauges	Tachometer, engine coolant temp, fuel level, hourmeter.
Warning system	Audible and visual system. Engine oil, transmission, park brake, battery, air cleaner, alternator.
Battery	12V, 900 CCA.
Pre-wire	Radio speakers (cab).
Horn	Controlled from front (all) and rear. (Backhoe only)
Reverse alarm	Standard fit.
Alternator	95 amps.

TRANSMISSION

The JCB Transmissions are designed and built specifically for JCB Backhoe Loaders. They feature synchronized shifting in all gears, power shift between forward and reverse, and ground speeds to maximize production.

2CX	12FT	LOADER	UTILITY
Manufacturer	JCB	JCB	JCB
Type	Synchro shuttle	Synchro shuttle	Synchro shuttle
Torque converter	Single stage, dual phase, 11 " diameter	Single stage, dual phase, 11 " diameter	Single stage, dual phase, 11 " diameter
Torque converter ratio	2.78:1	2.78:1	2.83:1
Gears forward/reverse	4F/4R	4F/4R	4F/4R
Gear selection	Synchro shift	Synchro shift	Synchro shift
Shuttle control – F/R	Power shuttle	Power shuttle	Power shuttle
Engine RPM	2200	2200	2430
Travel speeds	mph (kph) @ Rated engine speed	mph (kph) @ Rated engine speed	mph (kph) @ Rated engine speed
Tires equipped	12.5/80x18	12.5/80x18	12.5/80x18
Gear 1	3.8 (6.1)	5.1 (8.2)	3.4 (5.5)
Gear 2	6.5 (10.4)	5.4 (8.7)	5.7 (9.2)
Gear 3	19.6 (21.3)	11.6 (18.5)	11.7 (18.9)
Gear 4	21.3 (34.2)	18.8 (30.1)	18.6 (30.0)

Helping You Get the Job Done!



JCB BACKHOE LOADER | 2CX RANGE



FRONT AXLE

JCB front axles are designed and built specifically for backhoe loaders and incorporate double reduction, outboard planetary drives and steel drive mechanism front and rear.

Machine model	2CX
Type	JCB Max-Trac steer drive torque proportioning
Limited slip	Optional
Axle ratings	lb (kg)
Static load rating	16500 (7484)
Dynamic load rating	8300 (3765)
SAE J43 rating	10487 (4757)

REAR AXLE

JCB rear axles are designed and built specifically for backhoe loaders and incorporate double reduction, outboard planetary drives and steel drive mechanism front and rear.

Machine model	2CX
Type	JCB Max-Trac torque proportioning with outboard planetary drive
Limited slip	Optional
Axle ratings	lb (kg)
Static load rating	16500 (7484)
Dynamic load rating	8300 (3765)
SAE J43 rating	10220 (4636)

LOADER

JCB loaders provide parallel lift self leveling on the up and down cycle enhancing load retention and use of optional pallet forks. High capacity buckets and high lift and breakout forces maximize production.

Machine model	2CX
Loader attachment type	Q-Fit tool carrier
GP bucket	lb (kg)
Bucket breakout force	7935 (3600)
Lift capacity to full height	4850 (2200)
6-in-1 bucket	
Bucket breakout force	7935 (3600)
Lift capacity to full height	4624 (2100)
Pallet forks – Q-Fit	
Operating load	2873 (1300)

LOADER ATTACHMENTS – Tool Carrier – Q-Fit

Standard Q-Fit coupler
GP bucket 73", 0.8 cu.yd
GP bucket 78", 1.0 cu.yd
Pallet forks
2 foot truss boom with hydraulic winch
6-in-1 bucket, 73", 0.8 cu.yd
Q-Fit blank
Sweeper/collector

Consult your JCB Dealer for the complete list of Q-Fit attachments and applications.



JCB BACKHOE LOADER | 2CX RANGE



OPERATOR'S AREA

Meets SAE ROPS/FOPS requirements. Standard features include the following:

2CX	2CX	
	Cab	Canopy
Suspension seat	●	●
2" seat belt (HD seat w/3" belt option)	●	●
4 front and 2 rear work lamps	●	●
Brake lights, hazard lamps, turn signals	●	●
Windshield wiper and washer	●	●
Rear window wiper and washer	●	
Rear view mirrors	●	●
Deluxe floor mat and dome lamp	●	●
Heater/defogger	●	
Openable right side and rear windows	●	
Side instrument panel and switches	●	●

BRAKES

The JCB braking system ensures effective, fade-free braking. The self-adjusting, multi-disc arrangement is inboard mounted and is oil immersed for minimum maintenance and a long operating life. Automatic compensation ensures 'straight' machine braking.

- Twin brake pedals provide tighter turning circle and enhanced steering control on slippery ground.
- Park brake disc diameter: 11.2 in (285 mm).
- The independent parking brake is mounted on the input shaft rear axle. It is an over-center type, adjustable within the cab, with transmission disconnect to prevent premature brake pad wear.

TIRES

Tires listed are most popular sizes. See your JCB Dealer for a full listing. Tires are offered in sets of four.

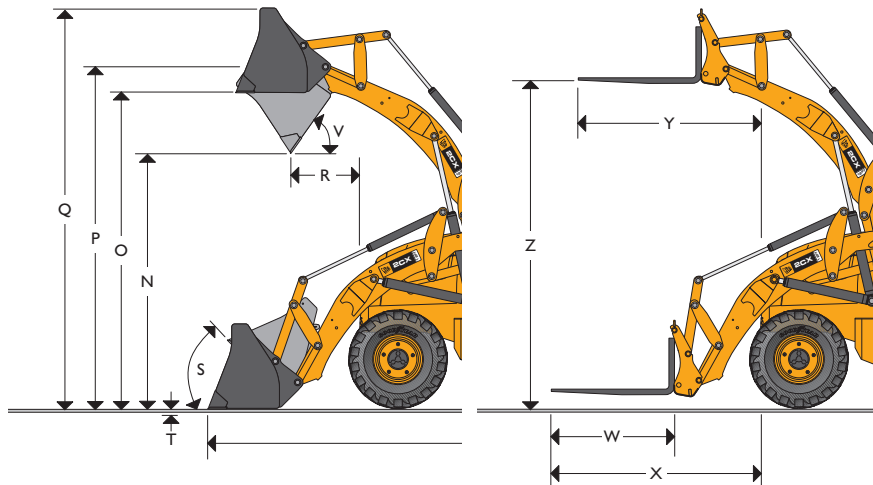
Machine model	2CX
12.5-18, 10 ply Industrial	Standard
335/80-R18 XM27 Radial	Optional



JCB BACKHOE LOADER | 2CX RANGE



LOADER DIMENSIONS



LOADER DIMENSIONS

Machine model	2CX
BUCKETS	
Overall width with bucket	6-6 (2.00)
N Dump height	8-2 (2.48)
O Load over height	9-10 (2.99)
P Loader hinge pin height	10-8 (3.24)
Q Maximum operating height	12-6 (3.80)
R Dump reach at full height	2-4 (0.71)
S Rollback @ ground	45°
T Digging depth	0-4 (0.10)
U Dump angle	45°
FORKS	
ft-in (meter)	
W Forks – tine length	3-11 (1.20)
Forks – tine width	0-4 (0.1)
X Forks reach at ground level	3-4 (1.02)
Y Forks reach at full height	2-4 (0.71)
Z Forks lift height – max.	9-11 (3.02)
Forks spacing – min./max.	0-6 (0.15) to 4-2 (1.28)
Operating load	3526 (1600) lb (kg)

SERVICE CAPACITIES

Machine model	2CX
	gal (liter)
Cooling system	3.7 (14)
Fuel tank	18 (83)
Engine with filter	11 (2.42)
Synchro shuttle trans with filter	3.74 (17)
Rear axle	2.4 (9)
Front drive axle	2.4 (9)
Drive axle hubs – each	0.5 (2)
Hydraulic system incl. tank	18 (83)

HYDRAULIC SYSTEM

Open center system with single gear pump which supplies oil for loader, backhoe and steering. Side mounted hydraulic tank with sight glass, JCB cylinders, high strength steel tubing, hose protection, return line filter.

- Open center hydraulic system using simple and reliable high efficiency gear pump.
- Single pump system with priority valve to ensure metered supply to steering and main hydraulic system.
- Easily used, ergonomically positioned levers give excellent control of the loader and backhoe, thus reducing operator fatigue.
- A full flow 10 micron filter ensures that oil stays free of contaminants.

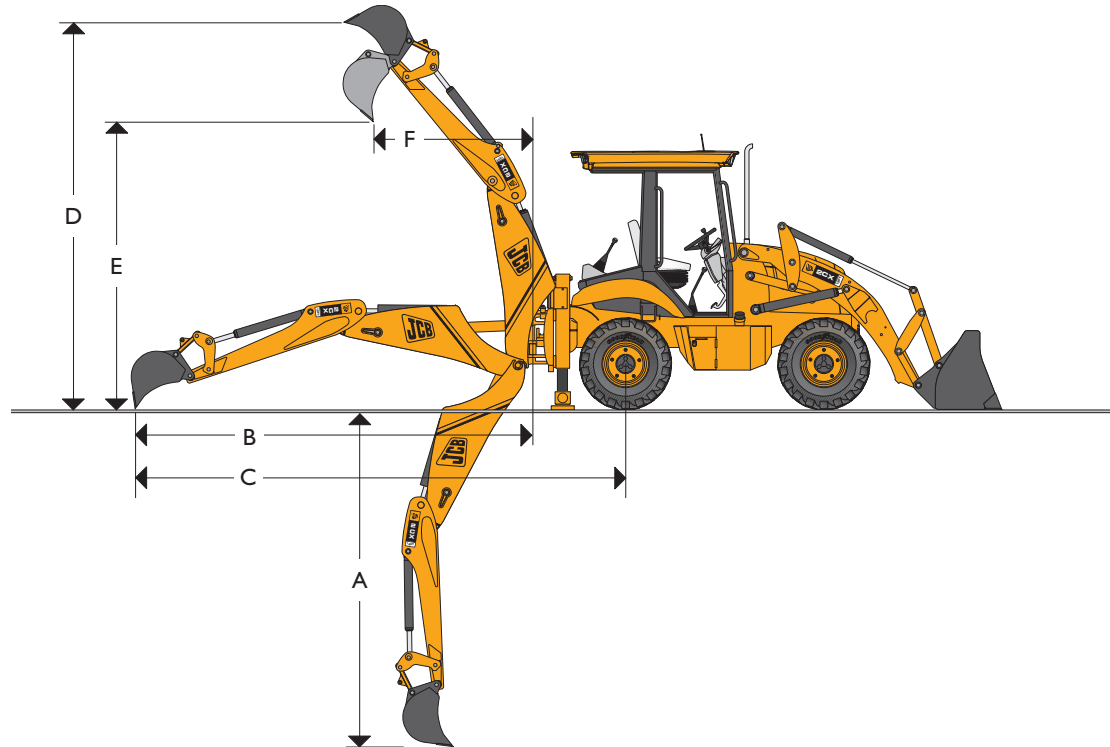
Machine model	2CX 12FT	2CX LOADER	2CX UTILITY
Pump output gpm (lpm)	17 (63.8)	17 (63.8)	17 (63.8)
System relief pressure psi (bar)	3335 (230)	3335 (230)	3300 (227)
Filter rating	10 micron	10 micron	10 micron



JCB BACKHOE LOADER | 2CX 12FT



JCB BACKHOE LOADER | 2CX 12FT



BACKHOE DIMENSIONS 2CX 12FT

	2CX 12FT
	ft-in (meter)
A SAE dig depth – Max.	12-0 (3.66)
A SAE dig depth – 2' flat bottom	11-8 (3.59)
B Reach from swing pivot	15-2 (4.61)
C Reach from rear axle center	18-10 (5.74)
D Maximum operating height	15-0 (4.59)
E Loading height	10-11 (3.32)
F Loading reach	8-9 (2.67)
Swing arc	180°
Rear frame width	6-5 (1.95)
King post travel	3-4 (1.02)
Bucket rotation	187°



JCB BACKHOE LOADER | 2CX 12FT

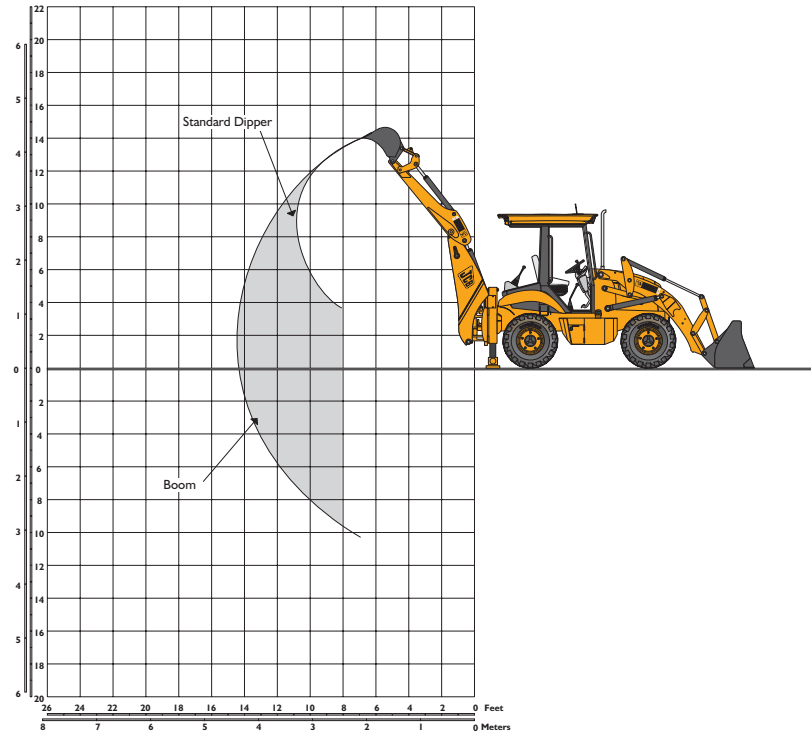


JCB BACKHOE LOADER | 2CX 12FT

BACKHOE PERFORMANCE

	2CX 12 FT Standard backhoe
	lb (kg)
Bucket force	9259 (4200)
Dipper force	5483 (2487)
Dipper lift capacity – SAE J31	
+ 4 feet	3260 (1480)
+ 6 feet	2425 (1100)
+ 8 feet	2215 (1005)
+ 10 feet	2260 (1025)
+ 12 feet	2568 (1165)
Boom lift capacity – SAE J31	
+ 12 feet	1355 (615)
+ 10 feet	1500 (680)
+ 8 feet	1520 (690)
+ 4 feet	1500 (680)
Ground level	1510 (685)
- 4 feet	1465 (665)
- 6 feet	1510 (685)
- 8 feet	1650 (750)

Lift capacity figures comply with SAE J31. All figures are stated in pounds (kilograms). The large arc indicates boom lift. The small arc indicates dipper lift with the boom at 68 degrees. Units are equipped with standard equipment as listed in this data sheet and a 24" general purpose backhoe bucket.



JCB HYDRAULIC BREAKERS

JCB hydraulic breakers are designed for use on JCB Backhoe Loaders. They feature constant blow energy, pressure damping, heavy-duty side plates and high impact frequency for maximum production. Coupled with factory installed hydraulic breaker circuit, the JCB breakers and Backhoe Loader make a perfect demolition combination.

Breaker model	HM265Q
Energy class – ft./lb	381
Impact frequency – bpm	480-1200
Oil flow range – gpm (lpm)	8-17 (30-65)
Operating weight – lb (kg)	441 (200)
Operating pressure – psi (bar)	1450-2175 (100-150)
Tool diameter – in. (mm)	2.6 (65)

A wide variety of tools are available for JCB breakers. See your JCB Dealer.

BACKHOE BUCKETS

JCB Backhoe Loader buckets are designed specifically for use on JCB machines with pin positions to maximize tearout, load retention and straight wall digging characteristics.

Bucket width – in.	9	12	16	18	24	48
Bucket width – mm	230	305	405	435	630	1220
Number of teeth	2	3	4	4	5	6
General purpose trenching buckets						
Capacity – cu.ft.	1.5	2.0	2.8	3.2	4.3	2.1
Capacity – cu.m	0.04	0.06	0.08	0.09	0.12	0.06
Weight – lbs	115	125	145	150	185	143
Weight – kg	52.2	56.7	65.8	68.1	83.9	64.9

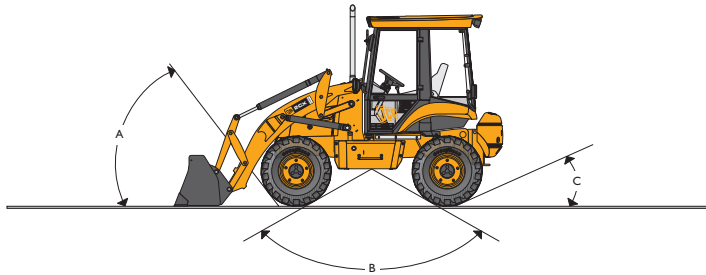
See your JCB Dealer for availability of other backhoe buckets and attachments.



JCB BACKHOE LOADER | 2CX LOADER/UTILITY



GROUND LINE ANGLES



- A Approach angle $> 45^\circ$
- B Interference angle/ramp to ground plane 130°
- C Departure angle 27°

THREE POINT HITCH

Category 2 hitch, featuring power up, power down and hydraulic tilt option.

Hitch category	2 (Cat 1 ball option)
Hitch lift ram	Single double acting cylinder
	in (mm)
Bore diameter	3.15 (80)
Rod diameter	1.97 (50)
Stroke	8.8 (226)
	lb (kg)
Lift capacity at hitch pins	7000 (3176)
Lift capacity at 600mm	3800 (1724)
Down pressure	1300 (590)
	in (mm)
Lower link travel	9 to 35.5 (228 to 902)
Departure angle	15°
Options	Hydraulic tilt ram
Swinging drawbar height	13 (337)

POWER TAKE OFF

Independent power take off.

PTO option	540 rpm $1\frac{3}{8}$ " 6 tooth straight spline
Direction of rotation	Clockwise
Engine rpm at 1695 rpm	540 rpm
PTO horsepower	55hp

JCB BACKHOE LOADER | 2CX LOADER/UTILITY



JCB BACKHOE LOADER | 2CX RANGE



A GLOBAL COMMITMENT TO QUALITY

JCB's total commitment to its products and customers has helped it grow from a one-man business into one of the world's largest manufacturers of backhoe loaders, crawler excavators, wheeled excavators, telescopic handlers, wheeled loaders, dump trucks, rough terrain fork lifts, industrial fork lifts, mini/midi excavators, skid steer loaders and tractors.

By making constant and massive investments in the latest production technology, the JCB factories have become some of the most advanced in the world.

By leading the field in innovative research and design, extensive testing and stringent quality control, JCB machines have become renowned all over the world for performance, value and reliability.

And with an extensive dealer sales and service network in over 150 countries, we aim to deliver the best customer support in the industry.

Through setting the standards by which others are judged, JCB has become one of the world's most impressive success stories.



2198

JCB Headquarters Savannah, 2000 Bamford Blvd., Pooler, GA 31322. Tel: 912.447.2000. Fax: 912.447.2299. www.jcb.com

JCB reserves the right to change design, materials and/or specifications without notice. Specifications are applicable to units sold in the United States and Canada. The JCB logo is a registered trademark of J C Bamford Excavators Ltd.

JCB BACKHOE LOADER | 2CX RANGE

Helping You Get
the Job Done!