

JCB COMPACT TRACK LOADER RANGE





**The versatility you expect from a compact track loader.
The safety and visibility you don't.**

WORLD'S SAFEST TRACK LOADER



In today's tough, hazardous working conditions, the safety of the compact track loader operator is paramount. That's why JCB designed the world's first compact track loaders with a side door. That means, unlike ordinary compact track loaders, you'll never risk injury by climbing over attachments to enter the cab through the front window. JCB's New Generation compact track loaders also offer an unparalleled 270 degrees of visibility. That's 60 percent more than ordinary compact track loaders.

We've accomplished this thanks to JCB's unique PowerBoom design, a concept that promotes operator safety, productivity and machine reliability under the most extreme job site conditions. JCB's New Generation compact track loaders also take into account operator comfort. We made our machines 33 percent larger and quieter than other compact track loaders. And, for total peace of mind, JCB compact track loaders come with a two-year, bumper-to-bumper warranty.

260T



FEATURES

- 2,600-pound-rated operating capacity; 10,205 pound operating weight
- An excellent combination of power and lift capacity while maintaining a low ground bearing pressure.
- 84 hp JCB Dieselmex engine, providing power and efficiency.
- Vertical lift design for maximum reach at full lift height

300T



FEATURES

- 3,000-pound-rated operating capacity; 10,663 pound operating weight
- Big lift capacity in a compact design for maximum productivity
- 92 hp JCB Dieselmex engine, providing increased power in tough applications.
- Vertical lift design for maximum reach at full lift height.

320T



FEATURES

- 3,200-pound-rated operating capacity; 10,939 pound operating weight
- Vertical lift design for maximum reach at full lift height.
- Ready to operate a multitude of attachments with standard Multi-Function Joysticks.
- The largest and most powerful model in JCB's compact track loader range.

Proven performance with added safety

Intelligent design

JCB adapted the technology from its world-leading telescopic handlers to give our compact track loader the unique advantage of a common-sense door. Positioning the compact track loader door on the side is just one more JCB innovation in a long history of advancements that date back to the introduction of the world's first backhoe loader in 1945.

Like our telescopic handlers, we achieved superb stability on JCB compact track loader by offsetting power train components and the cab to provide for a well-balanced machine. And, like telescopic handlers, our operators have an exceptional view around the work site, making them safer and more productive.

A unique door

Operators of ordinary compact track loaders have grown accustomed to courting danger every day by climbing in and out of their machines through the front window. That involves clambering over large, potentially dangerous attachments just to enter or leave the cab. JCB takes the common-sense approach – by positioning the door on the side of the machine.

Having a side door also makes the JCB compact track loader more productive. Now there's no need to remove loads of material to get in and out of the machine. What other compact track loader design allows the operator to enter or exit a compact track loader as safely and easily? None.

JCB's side door entry makes getting in and out of the machine easy.





JCB's PowerBoom design is proven in their world's best-selling telescopic handlers.

Visibly Better

Ordinary Track Loader
165° Visibility



JCB Track Loader
270° Visibility



60% better than competitors

JCB compact track loaders offer unmatched visibility for our operators – 270 degrees of visibility, in fact, which is 60 percent more than that offered by ordinary compact track loaders. Common sense shows the more you can see, the more productive you are and the less likely you are to injure yourself or your co-workers. It has been documented that the highest percentages of accidents involving construction equipment occur when backing up. JCB's PowerBoom design eliminates the need for a rear torque tube like you find on competitive vertical lift machines, which further enhances rearward visibility. JCB improves visibility even more by installing a rear-view mirror on every compact track loader model.

No mesh for a clear view

Enclosed cab versions of the new JCB compact track loader feature laminated protective glass, not the steel mesh found on ordinary compact track loaders. This gives our compact track loader operators unhindered visibility all around the machine, just like we provide on our telescopic handlers. On canopy versions, JCB provides a half door, a feature that again maximizes operator visibility. And, because there's no loader arm on the left side of the machine, JCB compact track loader operators enjoy a completely unobstructed view on both sides of the machine. For further operator protection on canopy versions, we installed mesh on the right side of the canopy. And, when the job requires additional cab protection, a protective structure can be installed over the cab to protect the operator while still maintaining exceptional visibility.

An independent study by an accredited engineering college verifies JCB's visibility advantage.





No compromise on performance

One boom is better than 2 arms

JCB's PowerBoom contains up to 20 percent more steel than two arms of an ordinary compact track loaders. This extra margin of steel provides the strength to give you a lifetime of productivity, whatever the application. Single booms aren't new – JCB telescopic handlers and hydraulic excavators have clearly demonstrated the power of the design. Furthermore, as the world leader in telescopic handler sales, JCB has the experience and track record to transform ordinary compact track loader designs into something far greater.

JCB's vertical lift design gives the operator maximum reach at height, which enables you to fill a dump truck from one side.

Proven Performance

The benefit of vertical lift vs. radial lift is to provide maximum lift capacity at maximum height and reach. Vertical lift with ordinary compact track loaders comes with a compromise – the torque tube restricts rear visibility. This is not an issue with JCB's vertical lift design.

The heart of the JCB product is its power plant, the JCB Dieselmex engine, which is purpose-built for the construction equipment industry. This 4.4 liter turbocharged diesel engine provides incredible power at low RPMs, thus reducing fuel consumption and exhaust emissions while supplying enough torque for the toughest of jobs. Further, JCB's Dieselmex engine has been designed with future legislation in mind. It's the industry's only engine that does not require after treatment to meet future emission standards.





Work in total comfort

33% more cab space

JCB operators will marvel at the comfortable and spacious compact track loader cab. In fact, our cab helps to prove the old adage: a comfortable operator is a productive operator. Many compact track loader owners are operators and the cab is their office. That's why it makes sense to enter the machine through a door rather than the front window. And because the JCB compact track loader door is more than twice the size of our competitor's front window, entering and exiting are safe and easy. The cab's interior boasts on average 33 percent more space than competitive machines, which makes for a more comfortable day at the office. Storage space is also provided in the armrest of the machine and in the tool-storage area.

A comfortable environment

The JCB cab features an industry-low noise level of 76dB(A). That's half the level of ordinary compact track loaders. Lower ambient noise means the operator can concentrate on the task at hand. An AM/FM/MP3 player enables the operator to enjoy background music or stay up to date on current events. A standard adjustable suspension seat provides added comfort and support, even over the roughest terrain. The JCB machine has been designed with the operator in mind, from easy-to-view overhead control panels placed in the operator's line of sight to intuitive, easy-to-use controls. Three operator compartment configurations are available – open canopy, cab with heat, and cab with heat and factory-installed air conditioning.



Machine option controls are ergonomically placed at roof level in the operator's line of sight.



The right control panel features machine diagnostics, an electronic throttle and the ignition.



Optional multi-function joysticks enable the operator to operate a wider variety of hydraulically driven attachments. The left arm rest also features a storage compartment.



More accessibility means less downtime

Best-in-class serviceability

You can rely on JCB to make life easier (and less costly) when it comes to servicing your compact track loader. A large opening rear door allows you access to the engine and all daily checkpoints. There is even a top-opening hood for enhanced access to the top of the engine and radiator clean out. JCB's PowerBoom design features 35 percent fewer grease points than twin-arm competitors. Extended greasing intervals of 50 hours enable you to spend less time servicing the machine and more time earning money with it.



JCB's tilting cab design allows easy access for maintenance and servicing.

Tilting cab design

A new tilting cab design allows easy access to the machine's power train and hydraulic components for maintenance and servicing. New O-ring face seal hydraulic fittings and a simplified overall design result in 38 percent fewer parts; that means fewer parts to service. To ensure complete peace of mind, JCB also provides customers with a standard two-year warranty, double that of most competitors. And, to make sure you get the parts you want when you want them, we also offer a 48-hour parts guarantee.

Protection comes standard

- Industry best standard 2 year warranty
- Includes 3 year structural warranty
- Full JCB machine range covered
- First year warranty covers unlimited hours, second year covered up to 2000 hours

JCB is committed to the best aftersales support in the industry. The 2 year standard warranty can be serviced by any authorized JCB dealership and is transferable during the standard 2 year period.



2 YEAR WARRANTY

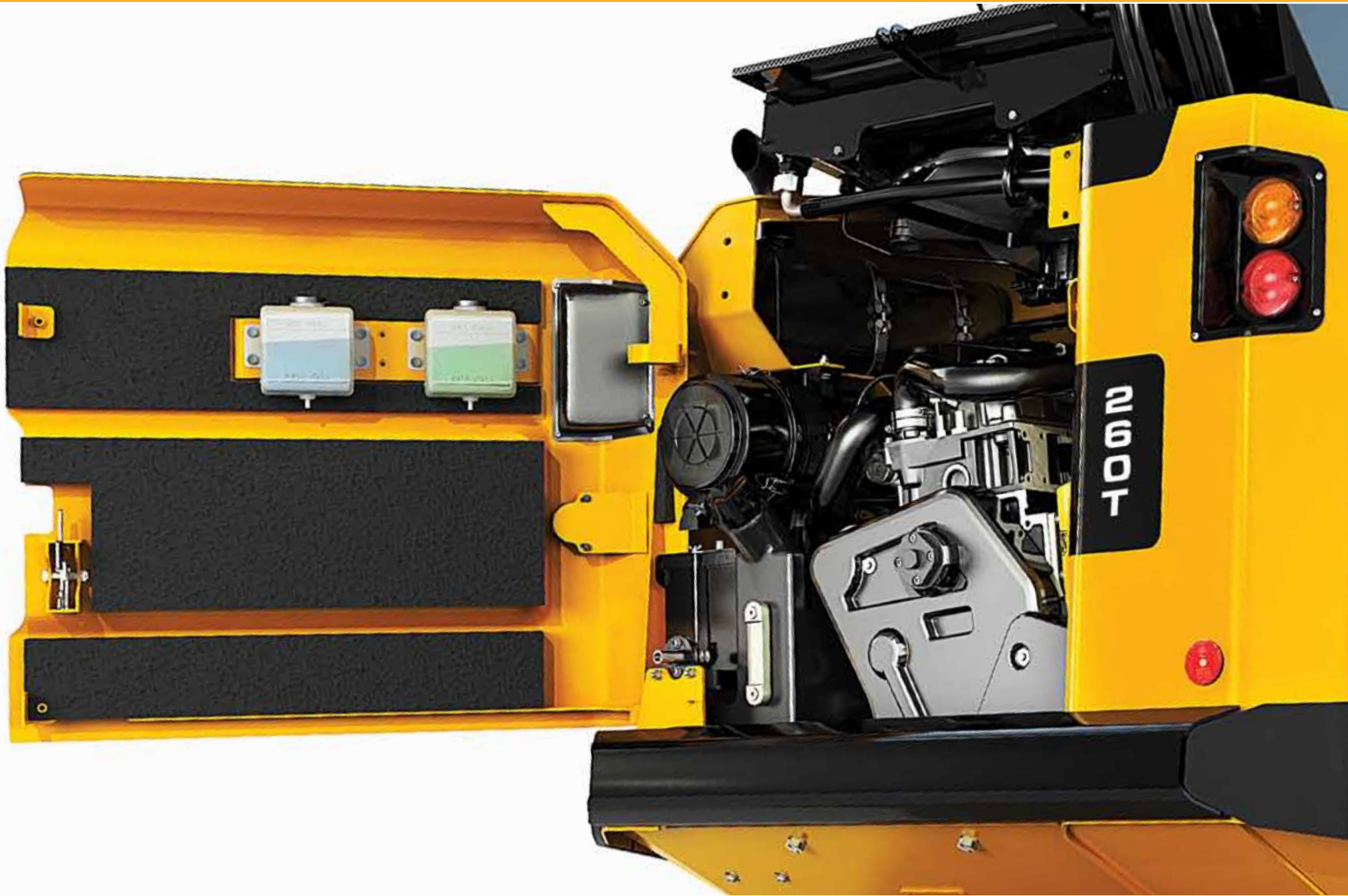
Parts when you need them

- Covers all current production track loaders
- Delivered to the dealer in 48 hours, NOT shipped in 48 hours
- If part isn't delivered to the dealer in 48 hours, parts and freight are free!

Maintain your productivity by minimizing your downtime. JCB guarantees delivery of your part within 48 hours once the participating dealer orders the part. Week-ends, holidays and acts of nature excluded from the program.



48 HOUR PARTS



Whatever the job, whatever the season

30 attachment ranges.

Our new range of 30 types of attachments provides ultimate versatility. That gives you the flexibility to use your JCB compact track loader all year round. JCB attachments are designed to meet stringent JCB standards. The universal mechanical quickhitch allows for easy interchange between attachments. An optional hydraulic quickhitch enables you to change attachments from the comfort of your cab. Optional multifunction joysticks allow you to use a wider variety of hydraulically driven attachments.

Enhancing your productivity

17.7" (450mm) wide rubber tracks provide excellent traction and floatation to operate in and maneuver around even the harshest jobsite conditions. Compact track loaders maintain a lower center of gravity than skid steer loaders, which allows them to travel and safely operate on steeper inclines. A wide array of options further enhances productivity. The two-speed transmission option allows for additional pushing power in low and faster travel speeds in high. JCB's Smooth Ride System reduces material spillage during load and carry operations while enhancing operator comfort. The Parallel Lift option helps keep loads level throughout the lift cycle; a major benefit when handling loose material or palletized loads. High-flow hydraulics expand the range of attachments that can be used with the machine.



A brochure listing the full range of skid steer attachments is available from JCB. Find out more details at www.jcb.com.

VERSATILITY

AUGERS



BREAKERS



BROOMS, SWEEPER COLLECTOR



BROOMS, ANGLE



BRUSH CUTTERS



BUCKETS, 6 IN1 MULTIPURPOSE



BUCKETS, GENERAL PURPOSE



BUCKETS, LANDSCAPE



BUCKETS, LIGHT MATERIAL



BUCKETS, SNOW



COLD PLANERS



DOZER BLADES



FORKS, PALLET



FORKS, MANURE



FORESTRY CUTTING HEADS



GRAPPLES, BRUSH



GRAPPLES, SCRAP



GRAPPLES, FORKED SCRAP



RAKES, AUTO



RAKES, LANDSCAPE POWER



RAKES ,LANDSCAPE PREPARATOR



ROCK SAWS



SILAGE DEFACERS



SNOW BLADES



SNOW BLOWERS



STUMP GRINDERS



TILLERS



TREE SPADES



TRENCHERS



VIBRATORY ROLLERS



**Safety and superb
operator enviroment for
greater productivity**



1



VISIBILITY

- 270 degrees of visibility, compared to 165 degrees with other compact track loaders, a 60 percent advantage.
- Eliminating the loader arm torque tube provides for superb rear visibility.
- Standard rear-view mirror centrally placed at the operator's eye level further enhances operator visibility.
- Mesh-free enclosed cab design provides unobstructed visibility, similar to telescopic handler visibility.
- A clear view to the bucket cutting edge provides for increased productivity on the job site.

4



POWER BOOM

- Common-sense boom design maximizes machine performance, like on other construction machines.
- JCB's PowerBoom has up to 20 percent more steel in one boom than the two arms of competitive units.
- It allows greater visibility on the job site, with no need for torque tubes or an arm on the left side of the machine.
- Proven intelligent design from the maker of the world's best-selling telescopic handlers.
- Vertical lift design allows for more reach at maximum lift height, making it easier to load high-sided trucks.

2



DOOR

- A common-sense door eliminates the need to climb in through the front window over dangerous attachments.
- The JCB door is twice the size of our competitor's entry to the machine through the front window.
- The door size has been increased and is now 40 percent larger, allowing easy access to the machine.
- We employ the same intelligent design found on our telescopic handlers, boom design and side-entry cab.
- Sliding left side window for increased ventilation.

5



CAB ENVIRONMENT

- The modular cab with integrated floor is 33 percent larger than ordinary compact track loader cabs.
- Includes a comfortable, standard mechanical suspension seat, with an option for air suspension with heat.
- Fully pressurized and isolation mounted enclosed cab design provides a more comfortable work environment.
- Industry low 76dB(A) internal cab noise that is more than half the sound level of ordinary compact track loaders.
- All controls and machine functions are ergonomically placed within easy reach of the operator.

3



SERVICEABILITY

- Large rear opening service door provides exceptional access to all daily maintenance points.
- Access is further enhanced with top-opening hood for radiator clean out and visibility of the top side of the engine.
- New tilting cab design enables easy access during more detailed machine maintenance.
- New O-Ring Face Seal hydraulic fittings and 38 percent fewer parts mean less downtime.
- Hydraulically driven variable speed fan helps to minimize internal and external noise.

6

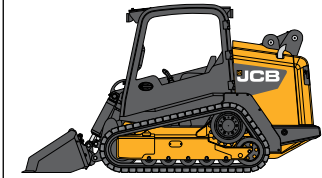
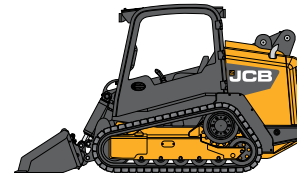
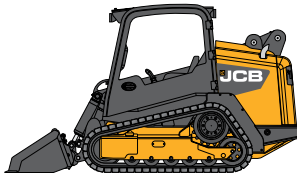


VERSATILITY

- Optional 7-way multifunction joysticks allow easy operation of hydraulically driven attachments.
- Standard mechanical universal quick hitch with an available Hydraulic quick hitch option
- Choose from 30 attachment ranges.
- Increased hydraulic horsepower, maximizes performance of many hydraulically driven attachments.
- Faster cycle times with the optional 2-speed transmission for more speed around the job site.

MACHINE SPECIFICATIONS

260T 300T 320T



Operating Weight lbs (kgs)	10205 (4628)	10663 (4836)	10939 (4961)
Engine Model	JCB Dieselmex TC-63	JCB Dieselmex TC-68	JCB Dieselmex TC-68
Gross Horsepower hp (kW)	84 (63)	92 (68.6)	92 (68.6)
Gross Torque lb/ft (Nm)	267 (362)	301 (408)	301 (408)
Visibility	270°	270°	270°

LOADER SPECIFICATIONS

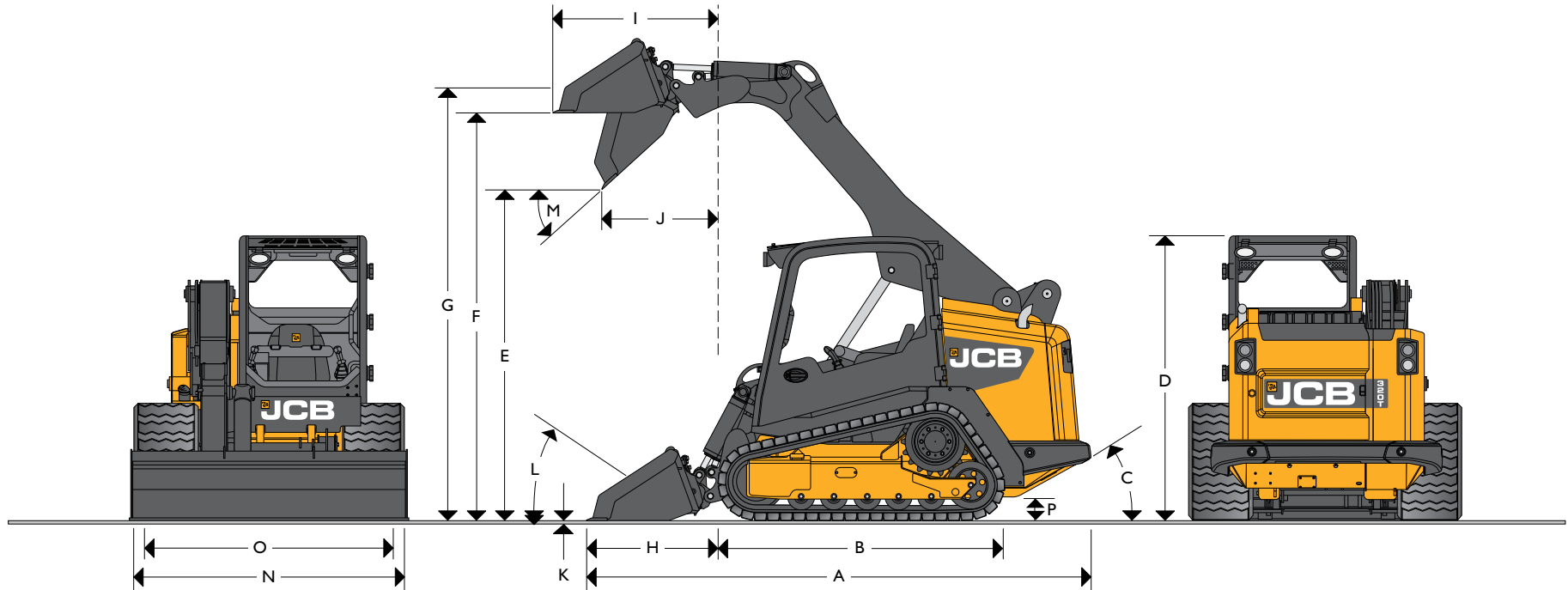
260T 300T 320T

Rated Operating Capacity - 35% lbs (kg)	2600 (1179)	3000 (1361)	3200 (1452)
Rated Operating Capacity - 50% lbs (kg)	3994 (1812)	4314 (1957)	4573 (2074)
Tipping Load lbs (kg)	7991 (3624)	8628 (3913)	9145 (4148)
Loader Lift Force lbs (kg)	5809 (2634)	5809 (2634)	5809 (2634)
Bucket Breakout Force lbs (kg)	7187 (3260)	7187 (3260)	7187 (3260)

SPECIFICATIONS

260T 300T 320T

Auxiliary Hydraulic Flow - gpm (lpm)	23 (87)	23 (87)	23 (87)
High Flow - gpm (lpm)	35.7 (135)	35.7 (135)	35.7 (135)
Main Relief Pressure - psi (bar)	3335 (230)	3335 (230)	3335 (230)
Single Speed - mph (kph)	5.7 (9.2)	5.7 (9.2)	5.7 (9.2)
Two Speed - mph (kph)	4.8 (7.7) / 7.8 (12.6)	4.8 (7.7) / 7.8 (12.6)	4.8 (7.7) / 7.8 (12.6)



STATIC DIMENSIONS – 260T/300T/320T

Machine Models	260T ft-in (m)	300T ft-in (m)	320T ft-in (m)
A Overall Length	12-2 (3.69)	12-5 (3.78)	12-5 (3.78)
B Track Base	6-11 (2.1)	6-11 (2.1)	6-11 (2.1)
C Angle of Departure	28.7°	28.7°	28.7°
D Overall Height	6-10 (2.08)	6-10 (2.08)	6-10 (2.08)
E Dump Height	7-11 (2.42)	7-10 (2.39)	7-10 (2.39)
F Loadover Height	9-10 (2.99)	9-10 (2.99)	9-10 (2.99)
G Height to hinge pin fully raised	10-5 (3.18)	10-5 (3.18)	10-5 (3.18)
H Reach @ ground level (toe plate horizontal)	3-2 (0.96)	3-5 (1.04)	3-5 (1.04)
I Max reach @ full height	4 (1.21)	4.3 (1.30)	4.3 (1.30)
J Reach @ full height - fully dumped	2-10.5 (0.87)	2-11 (0.90)	2-11 (0.90)
K Dig depth (toe plate horizontal) clearance	-3/8 (-10)	-3/8 (-10)	-3/8 (-10)
L Rollback @ ground	30°	30°	30°

Machine Models	260T ft-in (m)	300T ft-in (m)	320T ft-in (m)
M Dump angle	42°	42°	42°
N Bucket width - standard	6-6 (1.98)	7-0 (2.13)	7-0 (2.13)
O Width over tracks - standard	6-6 (1.98)	6-6 (1.98)	6-6 (1.98)
Rated Operating Capacity 35%	2600 (1179)	3000 (1361)	3200 (1452)
Rated Operating Capacity 50%	3994 (1812)	4314 (1957)	4573 (2074)
Bucket capacity - standard	.79 (.59)	.84 (.64)	.84 (.64)
Turning Radius			
Bucket corner radius	7-4.5 (2.24)	7-4.5 (2.24)	7-4.5 (2.24)
Quick hitch radius	4-10.5 (1.48)	4-10.5 (1.48)	4-10.5 (1.48)
Rear chassis radius	5.95 (1.76)	5.95 (1.76)	5.95 (1.76)
P Ground Clearance	9.8 (248)	9.8 (248)	9.8 (248)
Ground Bearing Pressure	4.6 (31.7)	4.8 (33.1)	4.9 (33.8)

A few words about JCB



Sir Anthony Bamford, the son of Mr. JCB, still runs the company today.

A family company on a global scale.

JCB is no ordinary company. From the dreams of one man, Joseph Cyril Bamford, we have grown into the world's biggest privately owned construction equipment company by volume. Since 1945, the same attention to detail, passion for progress and family spirit has taken us from strength to strength. Nowadays, JCB operates across all five continents, manufacturing at 18 factories in the UK, Brazil, Germany, China, North America and India. With 1,500 dealerships and depots selling and supporting our products in over 150 countries, we are one of the top three manufacturers of construction equipment with some of the finest engineering facilities in the world.

A history of world-class innovation.

Our business has always been driven by innovation, using only the most advanced technology, components and processes, meticulous design and rigorous testing. Evidence of this doesn't come much more powerful than our revolutionary JCB Dieselmix engine. Having grabbed the headlines when it smashed the world land speed record at 350.092 mph, it is now providing our customers with tomorrow's performance today.

Sustainability in all we do.

As a manufacturer of working machinery, operating in both established and emerging markets, we accept the

challenge of helping to deliver economic and environmental sustainability. Product innovations that provide the right solutions to our customers have been a vital part of our history and will be key to our sustainable future. But in addition to developing cleaner and more efficient machines, we have a commitment to ensuring our manufacturing facilities meet the highest environmental standards.

A commitment to our customers that goes on.

That's a fact we remind ourselves of constantly, and it's the reason our customers are at the heart of everything we do. Whatever a customer needs, we make it our mission to provide world-class support and 100% satisfaction. At the heart of this is a dedication to minimizing machine downtime. So our state-of-the-art World Parts Center dispatches more than a million genuine parts and attachments every week, with an 'Anywhere in 24 hours' strategy. Our JCB-trained technicians provide excellent, expert customer care, whether it's routine servicing or something more urgent.



Almost 1 out of every 2 backhoe loaders sold in the world is a JCB.

1940's



Joseph Cyril Bamford builds his first two-wheeled tipping trailer using a war-surplus Jeep axle and wheels in this rented garage in the United Kingdom.

1950's



JCB continues to expand its product line and moves its factory to larger quarters. By inventing the first backhoe loader, JCB revolutionizes the construction industry by giving contractors access to simple, powerful earthmovers.

1960's



JCB expands its factory, virtually doubling production capabilities. The company launches the forerunner of today's Jet Visit Program, acquiring an airplane and flying in customers for factory tours.

1970's



As demand for JCB products soars, the company exports its machines to Germany, Holland, Italy, Spain and Canada. JCB's Loadall Telescopic Handler revolutionizes the building industry by enabling bricks to be lifted on pallets.



Built in 2000, the JCB North American Headquarters in Savannah, Georgia supports all United States and Canadian dealers and manufactures the world's safest skid steer and compact tracked loader.

JCB in North America

JCB has been in North America for over 40 years, but made a huge commitment to the market in 2000, when the North American business and manufacturing center was built in Savannah, Georgia. From this 500,000 square foot facility, JCB supports over 120 dealers in the United States and Canada, providing parts, training and expertise. The Savannah manufacturing floor produces the world's safest skid steer and compact tracked loader.

From Savannah, we are also proud to manufacture the High Mobility Engineer Excavator (HMEE), a high-speed fully armored backhoe loader currently in use by the U.S. Army in Iraq and Afghanistan.



- Manufacturing Facilities
- Parts Distribution Centers
- Dealers

To find out more about the full range of JCB construction equipment, and to find the dealer nearest you, please visit www.jcbna.com.



Built in Savannah, the fully armored JCB High Mobility Engineer Excavator (HMEE) is the world's toughest backhoe. The JCB HMEE is currently deployed by the U.S. Army in Iraq and Afghanistan.

1980's



JCB expands its product range to wheeled and tracked excavators. The company develops the first – and still the only – true, high-speed tractor, the Fastrac. JCB launches its telescopic handler in the U.S.

1990's



The revolutionary monoboom skid steer is introduced to the compact range of equipment, quickly heralded as the safest skid steer on the market because of its unique side-door entry.

2000's



JCB builds its North American headquarters near Savannah. The JCB Dieselmax engine breaks the land speed record. The company begins manufacturing its own diesel engines. The U.S. Army contracts 800 HMEES, to be built in Savannah.

Tomorrow

JCB's commitment to be 'Never Content' will remain. We will continue to develop innovative machines that will better help our customers get the job done. Our family of dealers will continue to grow, insuring you the world-class service and support no matter where you operate your JCB.



Connect with JCB



www.JCBdirt.com

JCB Headquarters – Savannah. 2000 Bamford Blvd., Savannah, Georgia, 31322,

Tel: (912) 447-2000 Web: www.jcbna.com

JCB reserves the right to change specifications without notice. Some machines shown within this brochure are fitted with optional equipment which may vary between dealerships.

