

ORACLE

JD Edwards Logistics Re-Imagined through the Latest Enhancements and Roadmap

Listen to this Session Recording



If you prefer, you can listen to this session recording on the Quest Oracle Community Website:

<https://questoraclecommunity.org/learn/videos/jd-edwards-logistics-re-imagined-through-the-latest-enhancements-and-roadmap/>

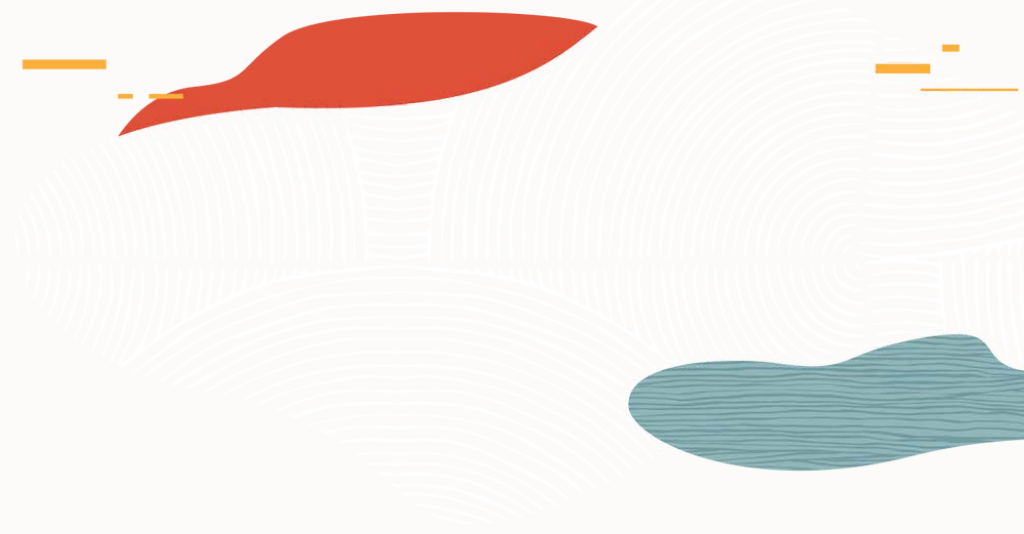
Safe harbor statement

The following is intended to outline our general product direction. It is intended for information purposes only, and may not be incorporated into any contract. It is not a commitment to deliver any material, code, or functionality, and should not be relied upon in making purchasing decisions. The development, release, timing, and pricing of any features or functionality described for Oracle's products may change and remains at the sole discretion of Oracle Corporation.



Program Agenda

- 1 Process Simplification and Automation
- 2 Customer Driven Enhancements and Roadmap
- 3 Summary and Resources



Process Simplification and Automation

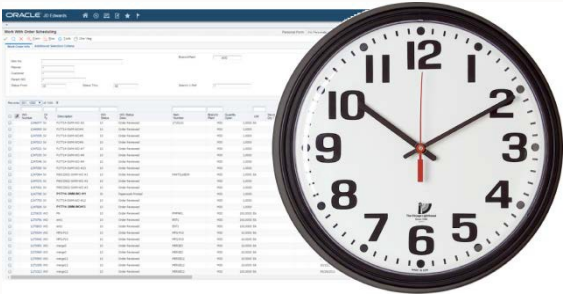


Process Simplification and Automation

Notifications, Mobility, Orchestrations, UX One



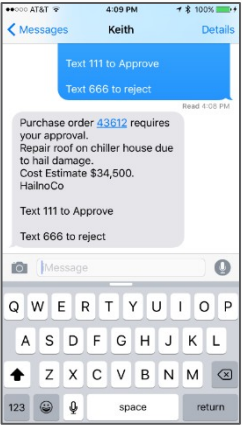
Phone Calls



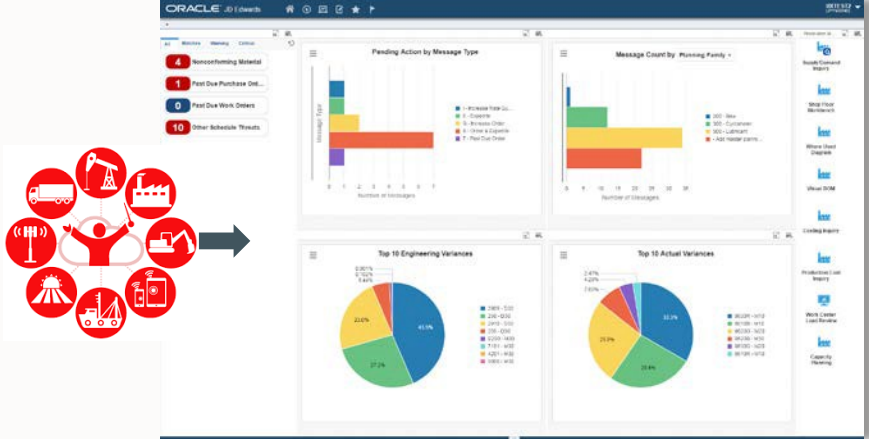
Manual Steps & Scheduled Jobs



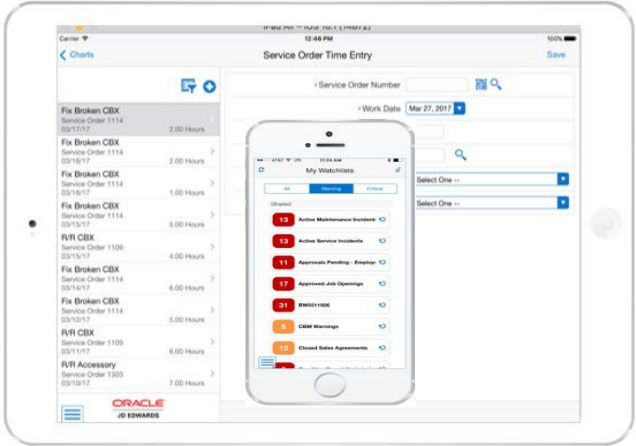
Paper & Clipboards



Notifications & Actions

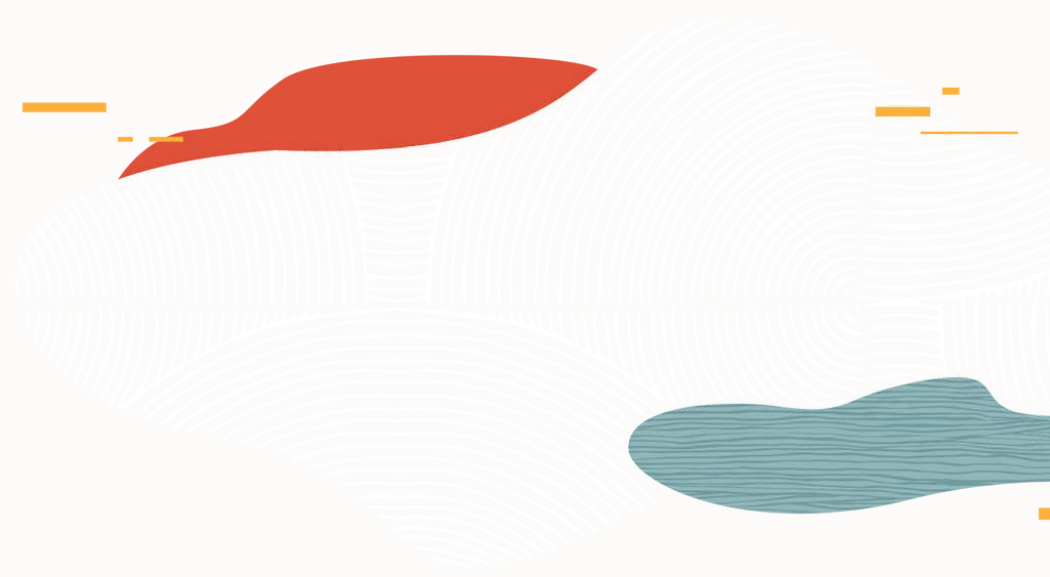


Simplification & Automation



Mobility & Barcode Scanning





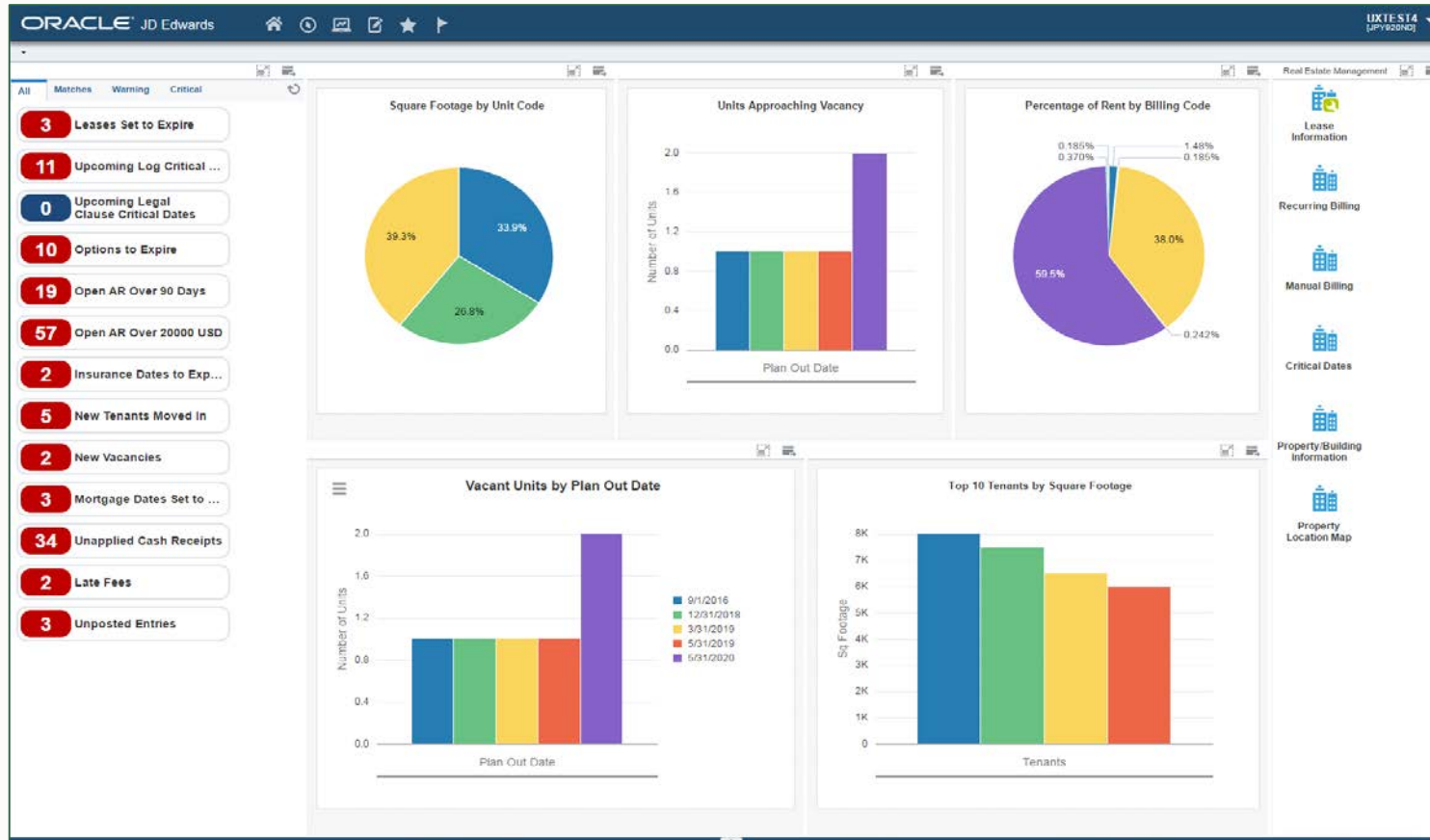
Process Simplification and Automation

UX One



JD Edwards UX One

Giving You Control of the User Experience and Delighting Users



**Make the Experience
Your Own With
Personalization &
Configuration**

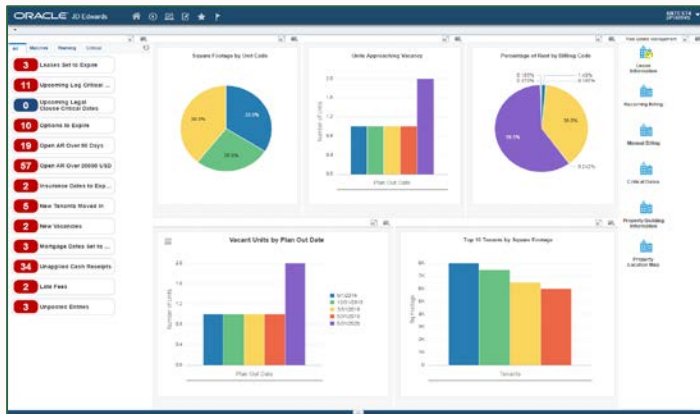
**Leverage 52 Roles
Delivered for Rapid
Deployment**



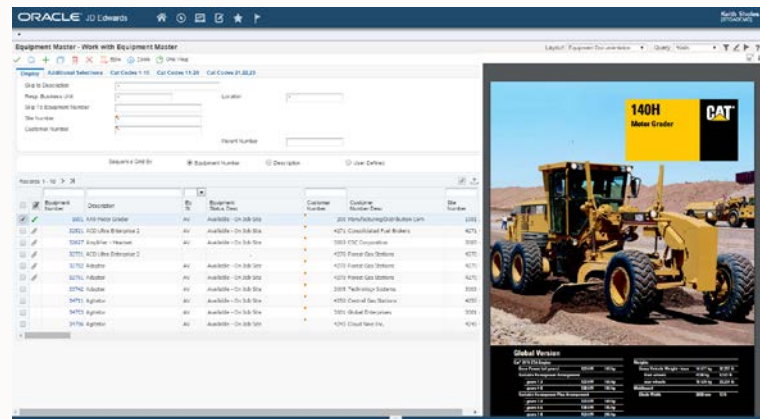
UX One Leverages Frameworks Not Design Tools

Personalization and Configuration Over Customization

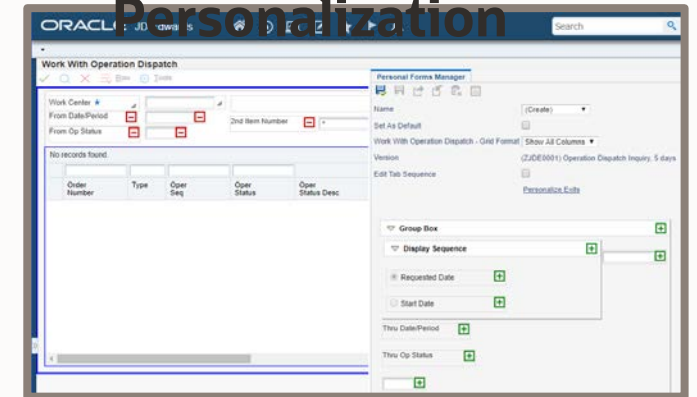
Page Composer



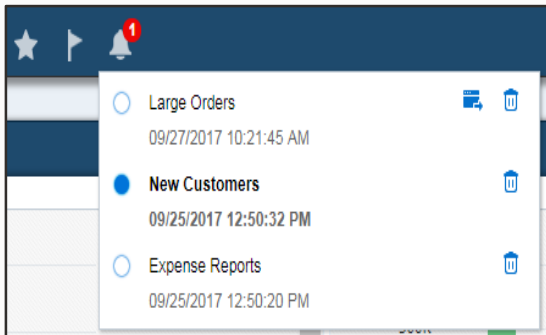
Café One



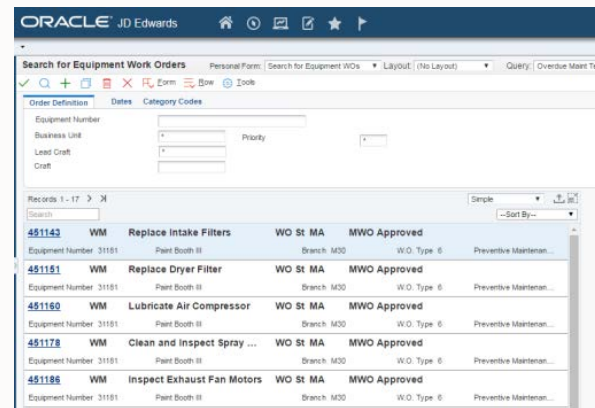
Form Personalization



Notifications



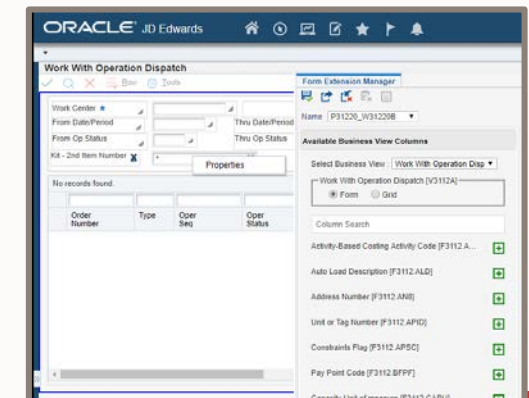
List View Grid



Search



Form



UX One Leverages Modern UI Controls

New Application Built Using Application Development Framework

The image displays three screenshots of the Oracle JD Edwards application interface, demonstrating modern UI controls:

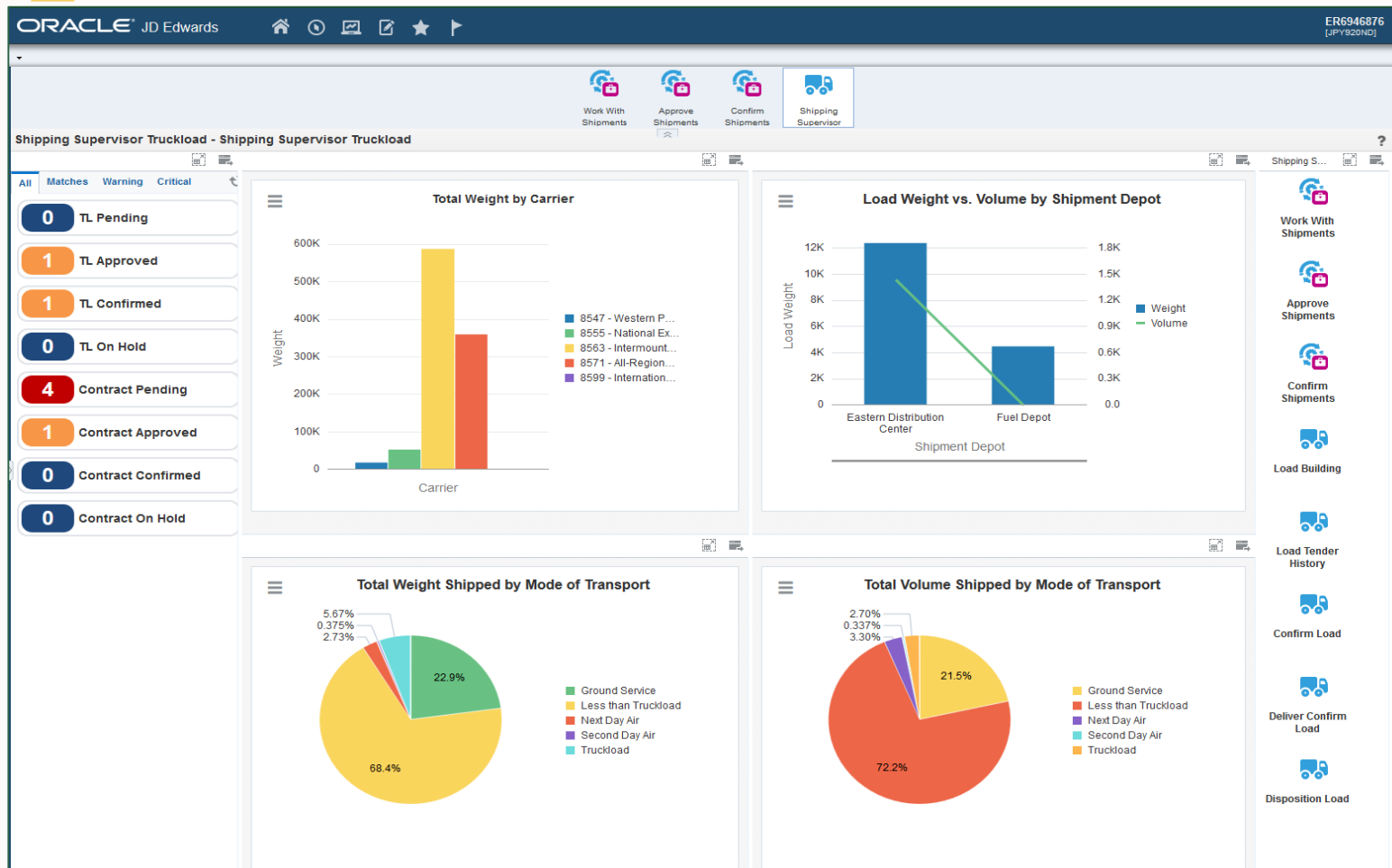
- Left Screenshot:** Shows a "Rental Item Availability" screen. It features a calendar view for August 2016, with a Gantt-style bar chart below it. The calendar shows dates from August 2nd to August 28th, with bars indicating availability for different rental items (e.g., CAT100, 30-Rental Contract, 30-Reservation, 30-Available, 50-Rental Contract, 50-Reservation, 50-Available).
- Middle Screenshot:** Shows a "Property Location Map" screen. It features a map of the United States with a green pin marking a location in Denver, CO. A context menu is open over the pin, listing options such as "Leases", "Log Detail Critical Dates", "Rent Roll", "Expiring Leases", "Building Information", "Log Details", "Category Codes", "Floor Information", "Building Attributes", and "Address Book".
- Right Screenshot:** Shows an "Organizational Hierarchy" screen. It features a hierarchical diagram of organizational roles and contacts. The hierarchy starts with "Angela E. Ruchel" (Corporate Controller) at the top, followed by several other roles like "John Jackson" (Purchasing Agent), "Daniel Nguyen" (Payroll Manager), "Craig Thompson" (Accounting Manager), and "Joann Gordon" (Sr. Financial Analyst). Each role is represented by a small profile card with a photo, name, title, and contact information.

Calendar, Gantt, Maps, Diagram, Hierarchy, charts etc.



JD Edwards UX One – Roles for Logistics

Gain Control of Inventory Levels & Warehouse Flow, Optimize Transportation Planning

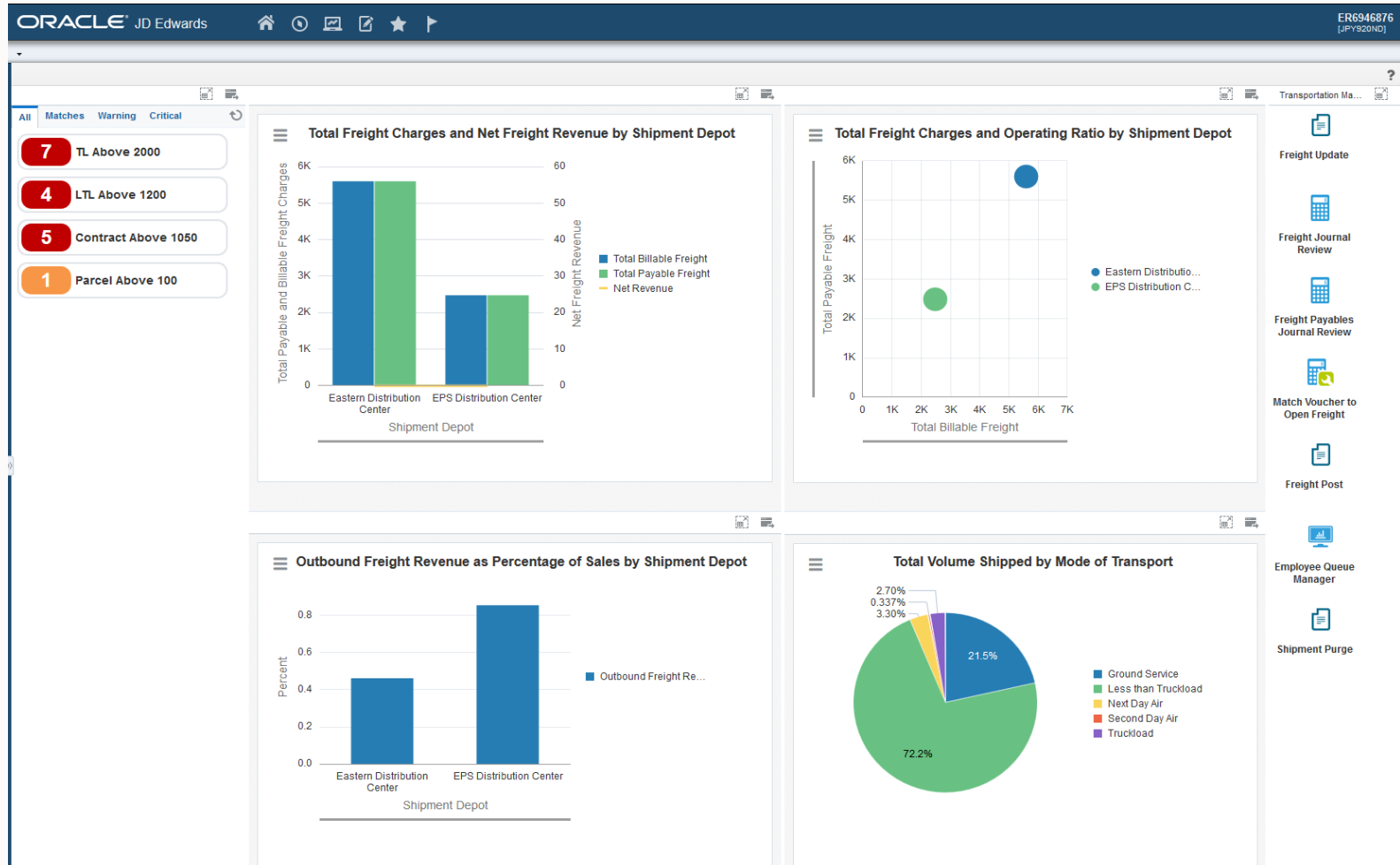


- Shipping Supervisor
- Transportation Manager
- Warehouse Manager
- Inventory Accounting Manager
- Inventory Control Manger



JD Edwards UX One – Transportation Manager

Reduce Transportation Costs by Monitoring Freight Charges and Comparing Carriers to Mode of Transport



Alerts for shipments with excessive freight charges

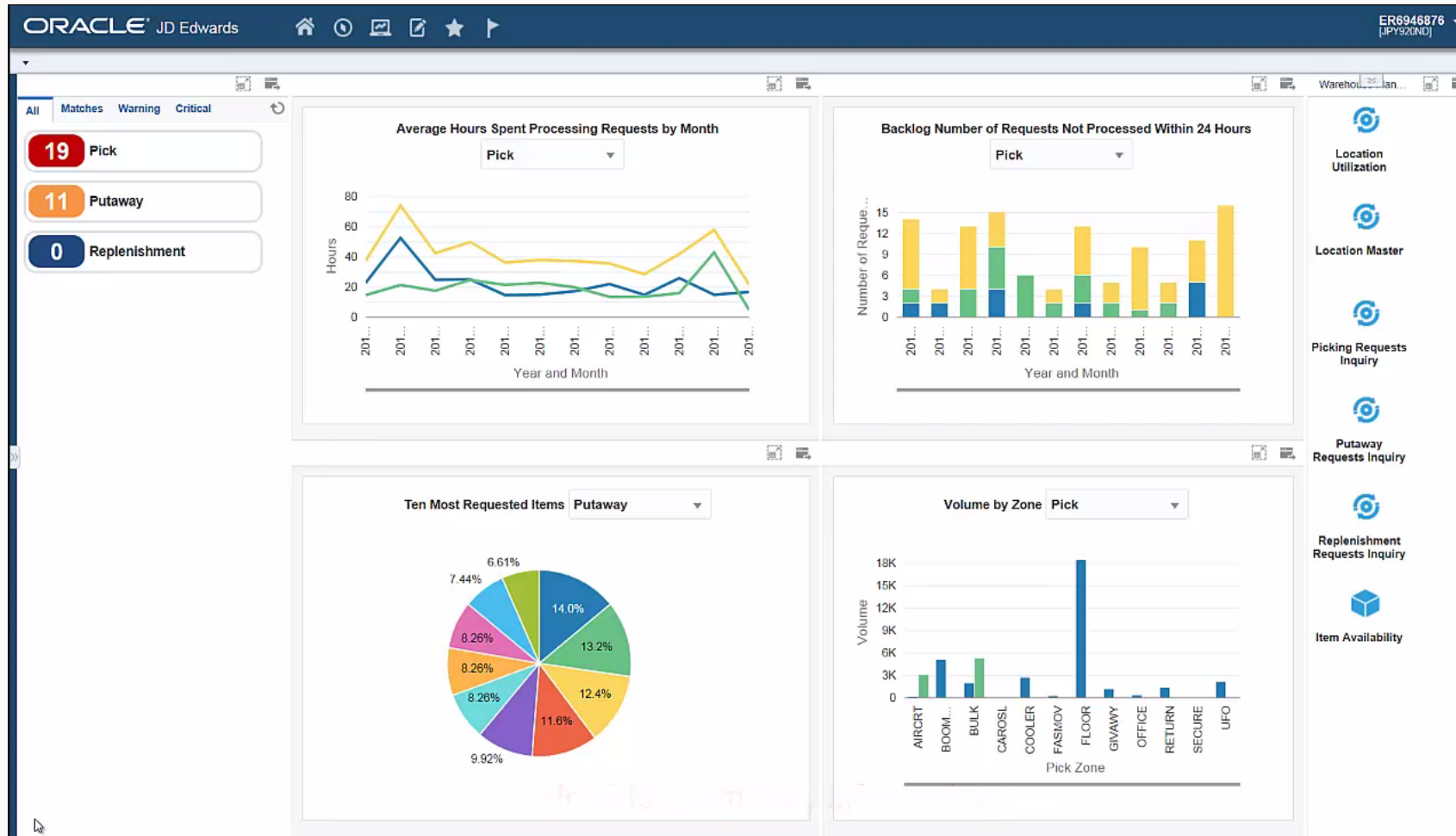
Review transportation analytics that impact your transportation program

Easy access to programs to update and review freight charges



JD Edwards UX One – Warehouse Manager

Improve Warehouse Efficiency through Greater Visibility to Movement Activities

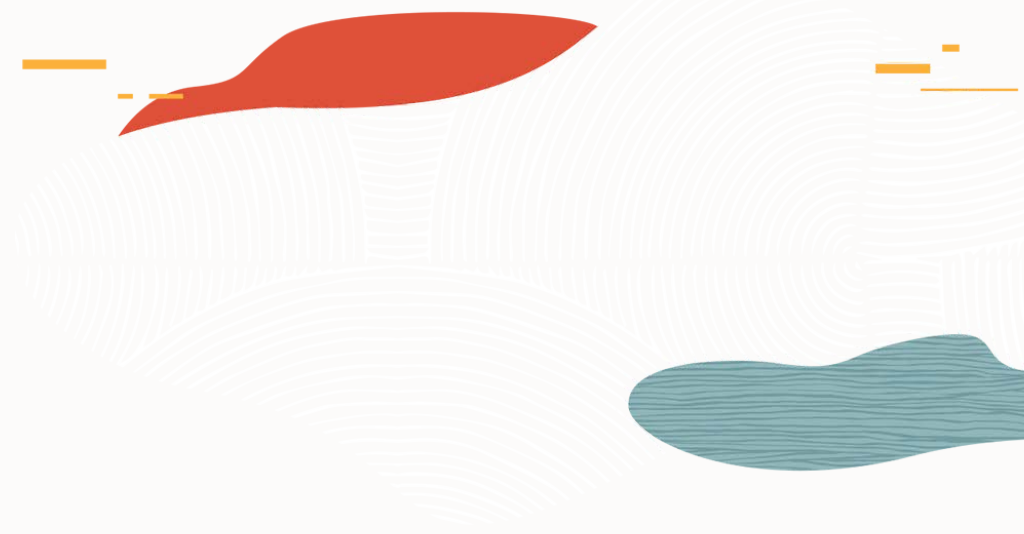


Quickly see alerts for each type of warehouse request

Quick glance at warehouse movement efficiency

Easy access to various warehouse inquiry programs





Process Simplification and Automation

Notifications

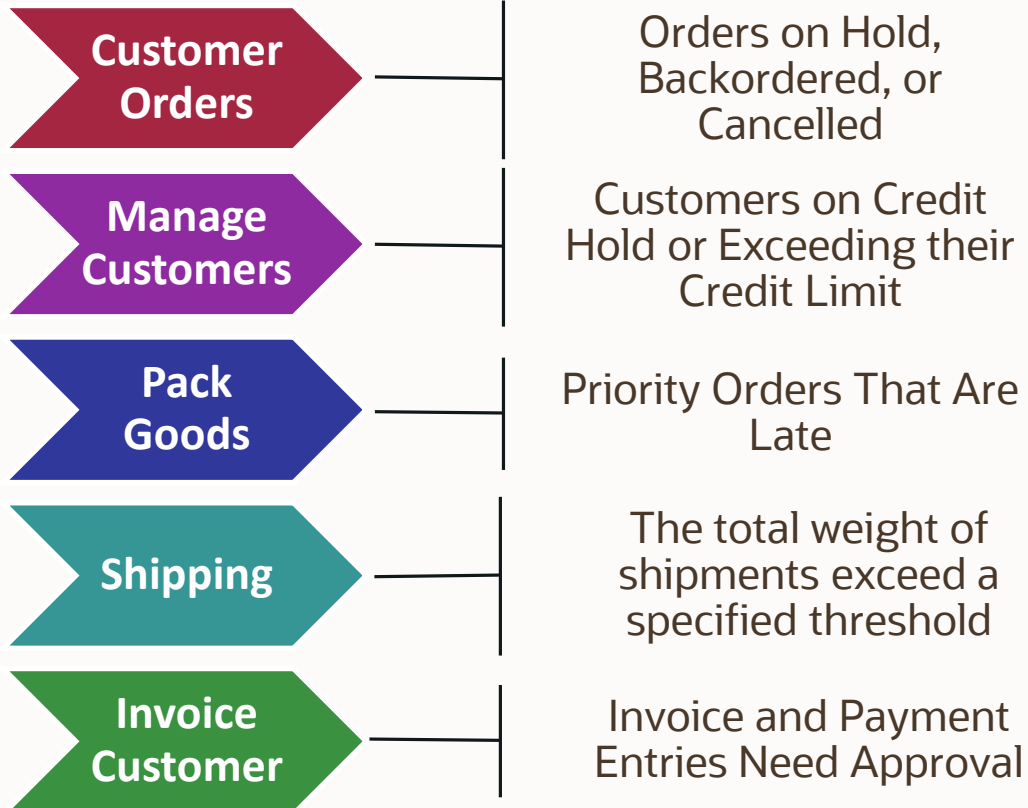


Pre-Configured Notification Content

Simplifying Customer Enablement of Our Newest User Defined Object

Provide immediate business value with 70 pre-configured notifications

Pushing Important Information to Speed Up the Order to Cash Process



Expediting Approvals to Improve Process Efficiency

- Purchase Orders
- Requisitions
- A/P, A/R, and G/L Batches
- Payee Changes
- Delinquency notices

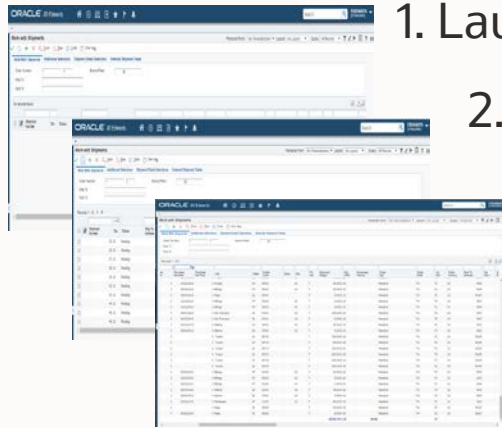
Proactive notifications across EnterpriseOne

- Financial Management
- Sales Order Management
- Procurement Management
- Manufacturing
- Transportation Management
- Capital Asset Management
- Project Costing
- Real Estate Management
- Payroll and HCM
- Service Management
- Requisition Self-Service

Example: Shipping Supervisor Needs to Know when the Total Weight for Shipments Reach a Critical Threshold



Tedious and Manual



1. Launch Work With Shipments

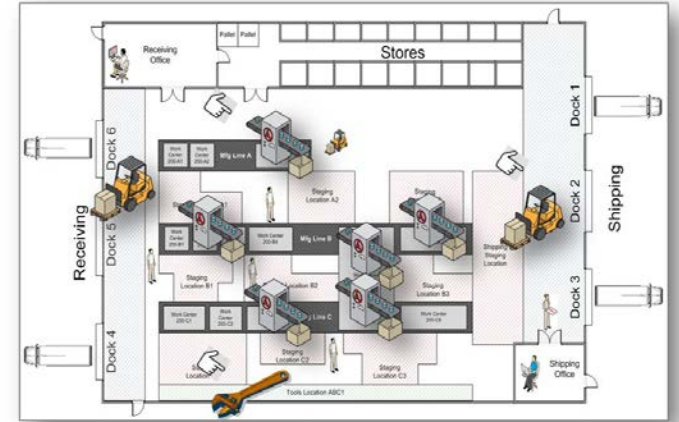
2. Query on Shipment Status

3. Scroll to bottom of the form.

4. View total weight

Repeat manually every...hour?

Nonstop Dock Activity



Notification and Action



Receive mobile alert
Begin process to add more labor

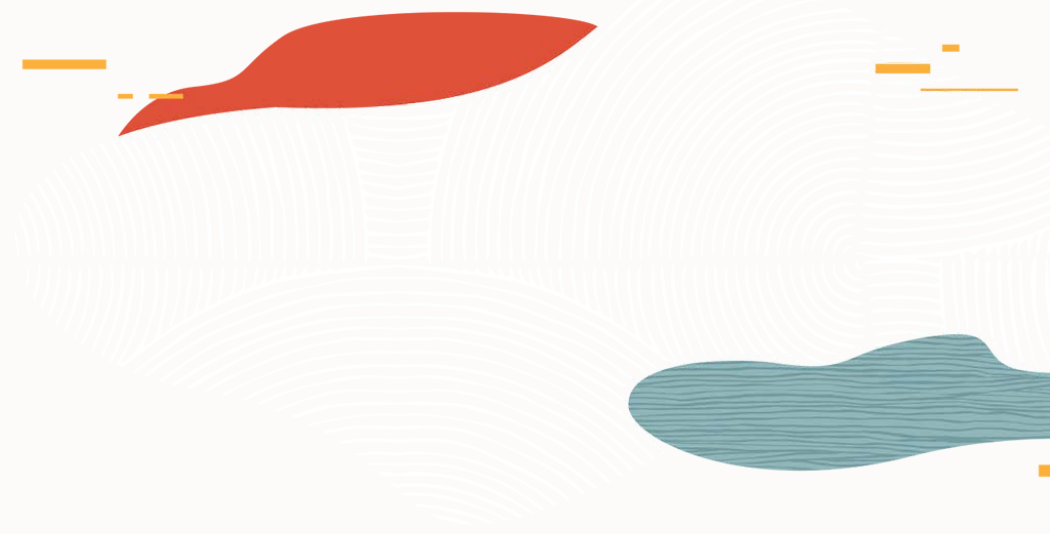


Critical weight threshold alert



Monitor continuously and automatically





Process Simplification and Automation

Automation



JD Edwards Orchestrator

Simplifies Process Automation



Mobile Applications

Eliminate Clipboards



Internet of Things

Automate Data Collection



Oracle Cloud

Simplify Integration



Orchestrator

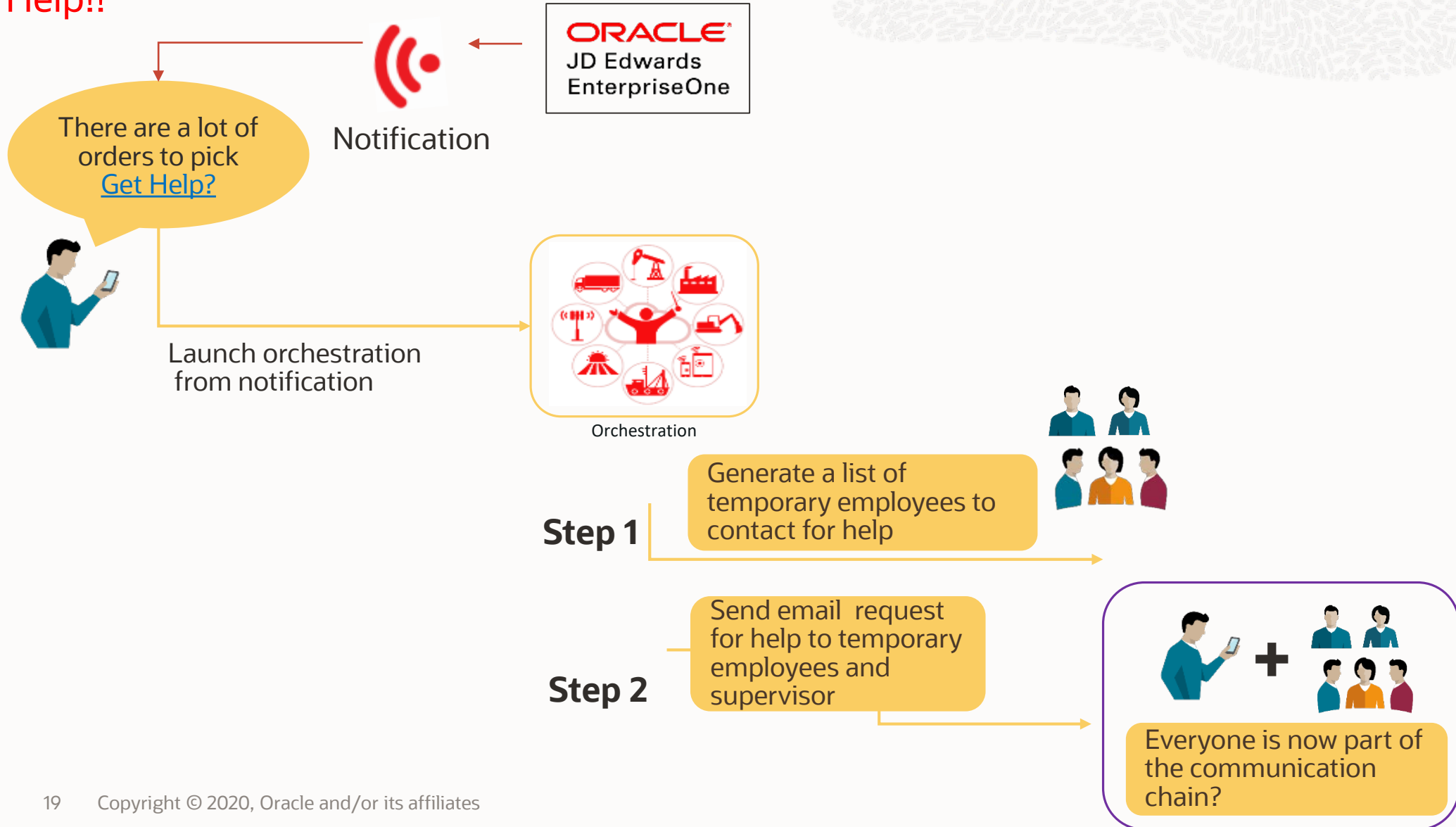


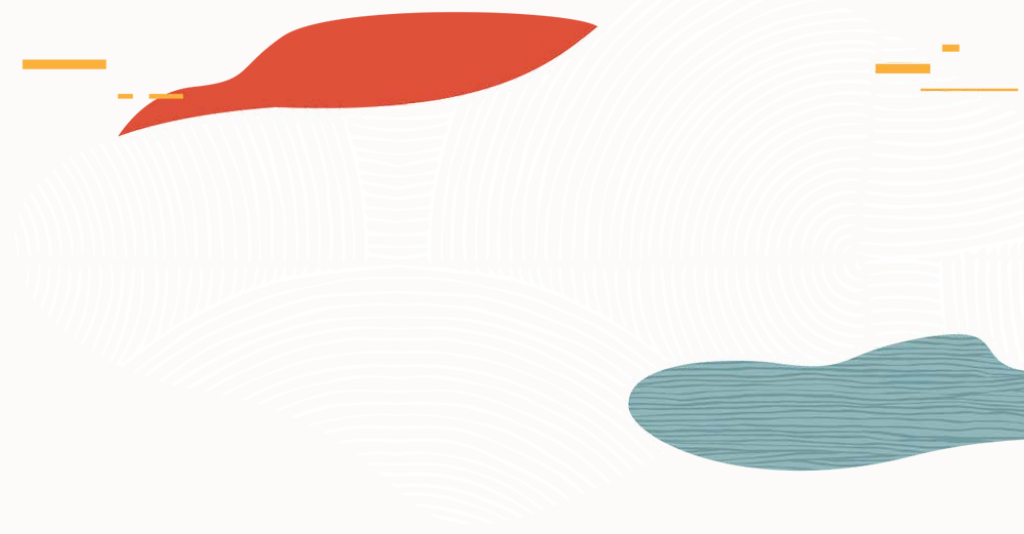
JDE Apps
Business
Logic
and Data



Example: Process Automation

Get Help!!





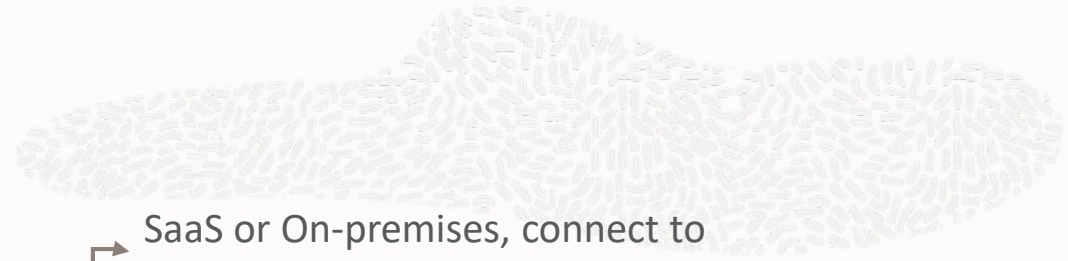
Process Simplification and Automation

Mobility



Leveraging Oracle Technology

Visual Builder Cloud Service (VBCS)



No coding required

SaaS or On-premises, connect to any backend systems

Drag and Drop Visual Development

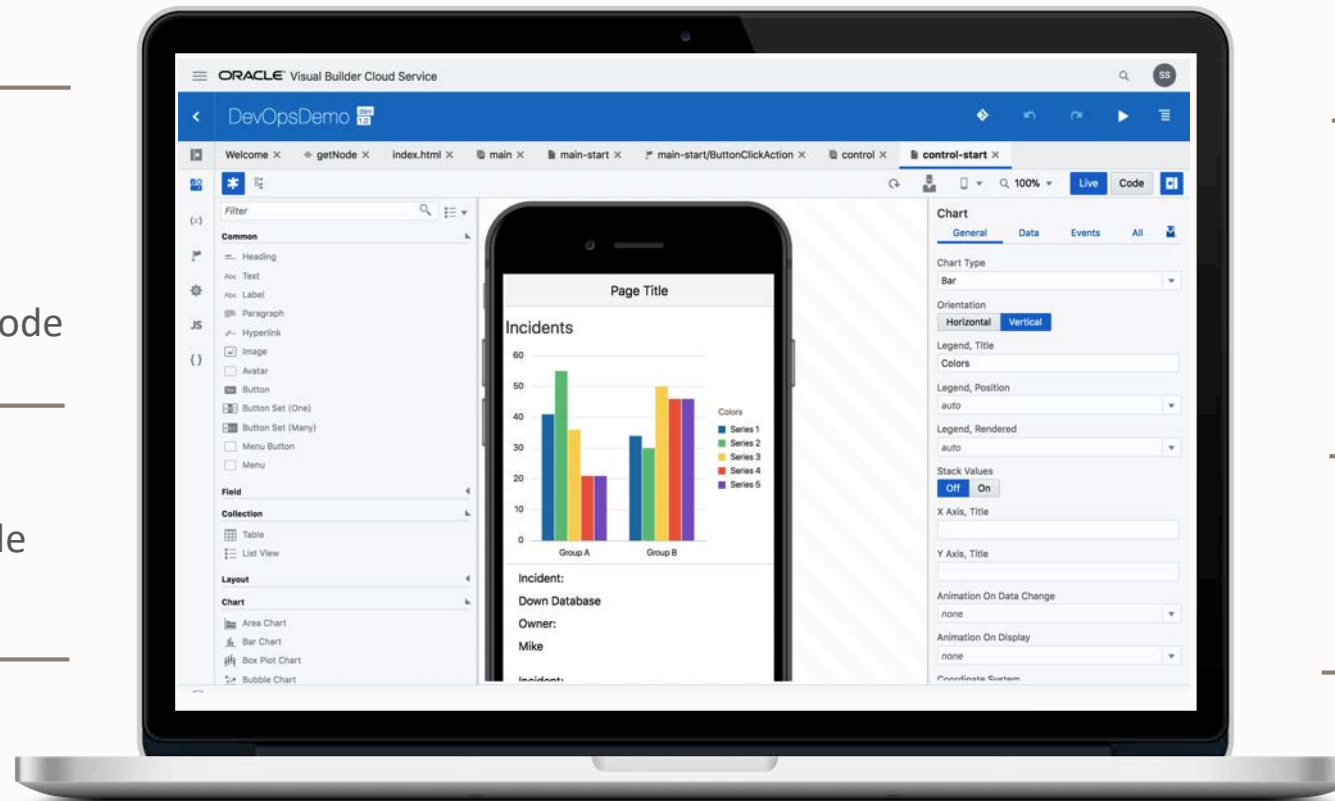
Rich library of components

Access to auto-generated code

Native look and feel iOS and Android

Deploy on-device to Apple and Android platforms

Build complex multi-screen apps



In-browser app preview

Browser based environment



Leveraging Oracle Technology

Oracle Digital Assistant

Chatbots expose EnterpriseOne applications and data in natural human dialog



ORACLE JD Edwards

EnterpriseOne JD Edwards-Virtual Assistant 0 AP Manager

1 Vouchers to Approve

0 Vouchers in Error

200+ Payments Overdue

Payments Due with Discount Available by Supplier

Payments Overdue by Due Date

process vouchers

There are 31 voucher batches pending. Would you like me to review, approve and post them?

Yes

No

Reviewing voucher batches...

I've reviewed, approved and sent for posting 30 of the 31 voucher batches.

44 vouchers totaling \$1,018,419.43

I did not approve or post voucher batch 32204.

It contains voucher 1287 PV for supplier Parts Emporium that is above their normal amount.

Voucher batch 32204

2 Documents - \$2,551,059.00

Review



List orders above \$2000

There are 4 orders where the cost is greater than \$2000

5096-OP-0001 (60 Days Old)

Martin, Pamela
Universal Incorporated
4242.77USD
20190814

View

5094-OP-0001

Martin, Pamela
Parts Emporium
2651.73.77USD
20190816

Approve order 5094

Ready to approve order 5094. Shall I continue?

Yes

No

Order 5094 approved. Do you want to approve another order from this list?

Yes

Just now

See the prototype in action:

<https://www.youtube.com/embed/VGbKR6AiJro?autoplay=1&mute=1>

Roadmap subject to change without notice. The above is intended or information purposes and may not be incorporated into a contract.



Build Your Own

Low Code/No Code - Fit for purpose UI using tool of your choice

Choose Your Low/No Code Development Tool



Orchestrations to Connect to JD Edwards



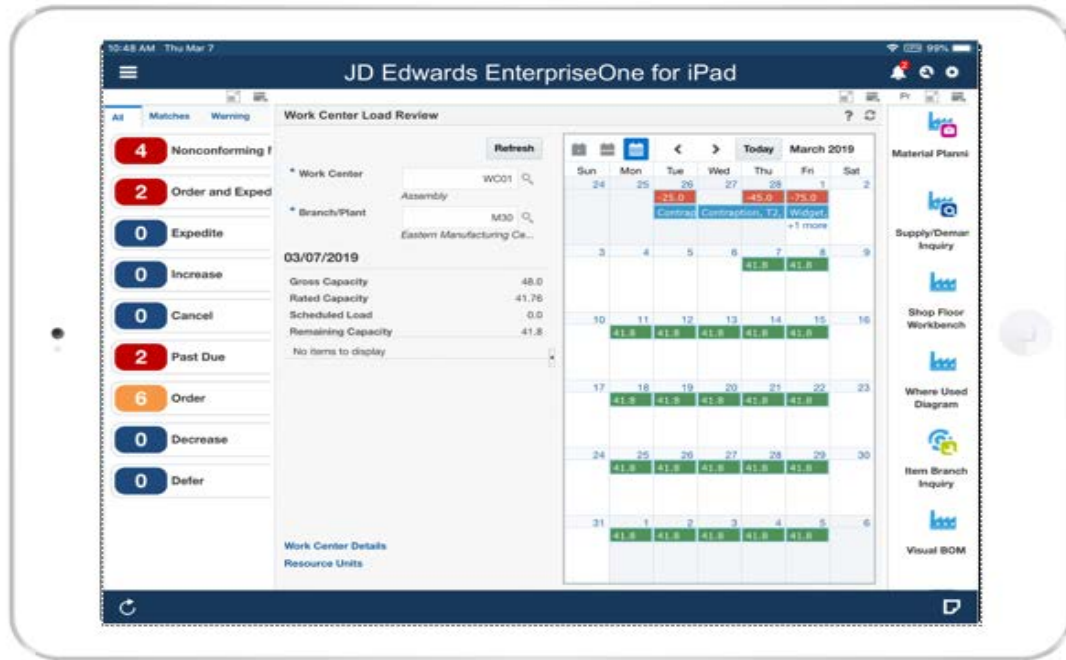
Rapid Application Development to enable Mobile Access, Chatbots, IoT, Collaboration...



- Choice and Control
- Collect, filter, analyze, and act on real-time data
- Own and manage orchestrations



JD Edwards EnterpriseOne for iPad



- iOS Only
- Available on the Apple Store
- Configure menus through Favorites
- Supports friendly tablet layout

iPad Container – Tablet Friendly Layout

ORACLE JD Edwards ER6946876 [STBADEMO]

Work with Shipments Personal Form: (No Personalization) Layout: My TMS Query: All Records

Order Number: * * Branch/Plant: 30 Shipment Number: *

Ship To: * Sold To: *

Records 161 - 178 of 178 * My List

Shipment Number	Status	Amount	Unit
2260	Pending	20.0000	LB
4242 Capital System			
Atlanta GA 30342			
2261	Pending	10.0000	LB
4242 Capital System			
Atlanta GA 30342			
2265	Pending	30.0000	LB
4242 Capital System			
Atlanta GA 30342			
2266	Pending	30.0000	LB

800.323.5441 [Track Shipment](#) [Sign In](#)

FREIGHTQUOTE
by C.H. ROBINSON

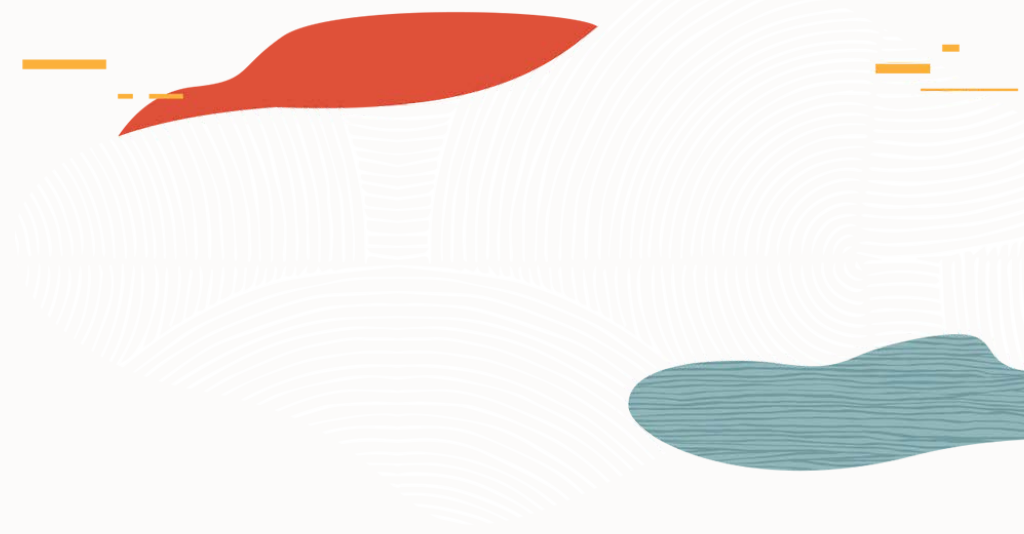
Work With Routing Options

Mode of Trn: * Shipment Depot: 30
Carrier Number: * Origin: 6031
Promised Shipment: * Destination: 4242
Promised Delivery: * Shipment: 2260
Routing Step: 1.0

Records 1 - 6 * Routes

Mod Trn	SCAC	Payable Charge	Billable Charge	Transit Days
<input checked="" type="radio"/> GRD	WSTP	5.53	5.53	2
<input type="radio"/> SDA	WSTP	8.11	8.11	2
<input type="radio"/> LTL	REGM	59.67	59.67	1
<input type="radio"/> SDA	NATX	215.00	215.00	2
<input type="radio"/> NDA	NATX	420.00	420.00	1
<input type="radio"/> TL	IMTR	600.00	600.00	1





Customer Driven Enhancements



Warehouse - License Plate Picking Optimization



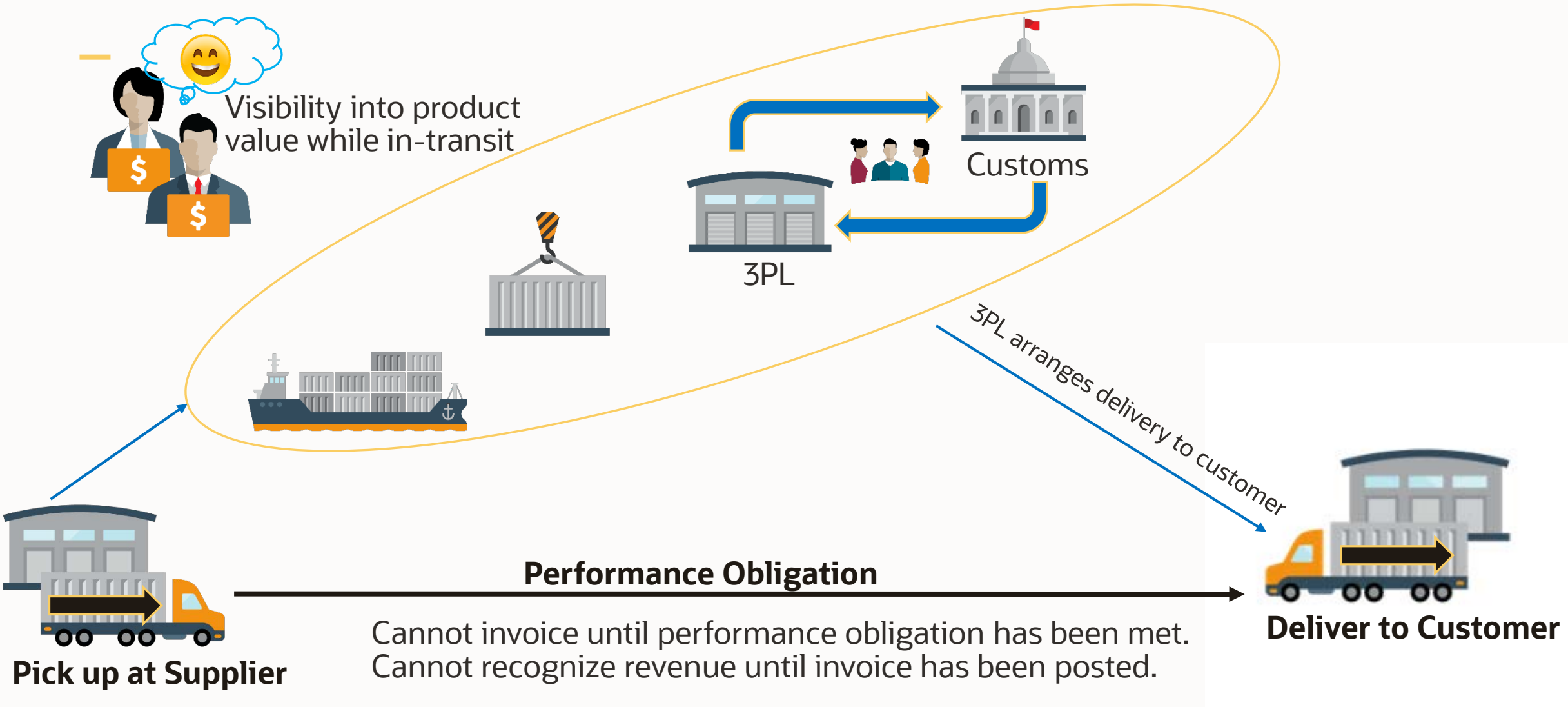
Benefits

- Optimize license plate picking
- Maximize location utilization
- Maximize overall warehouse productivity

Features

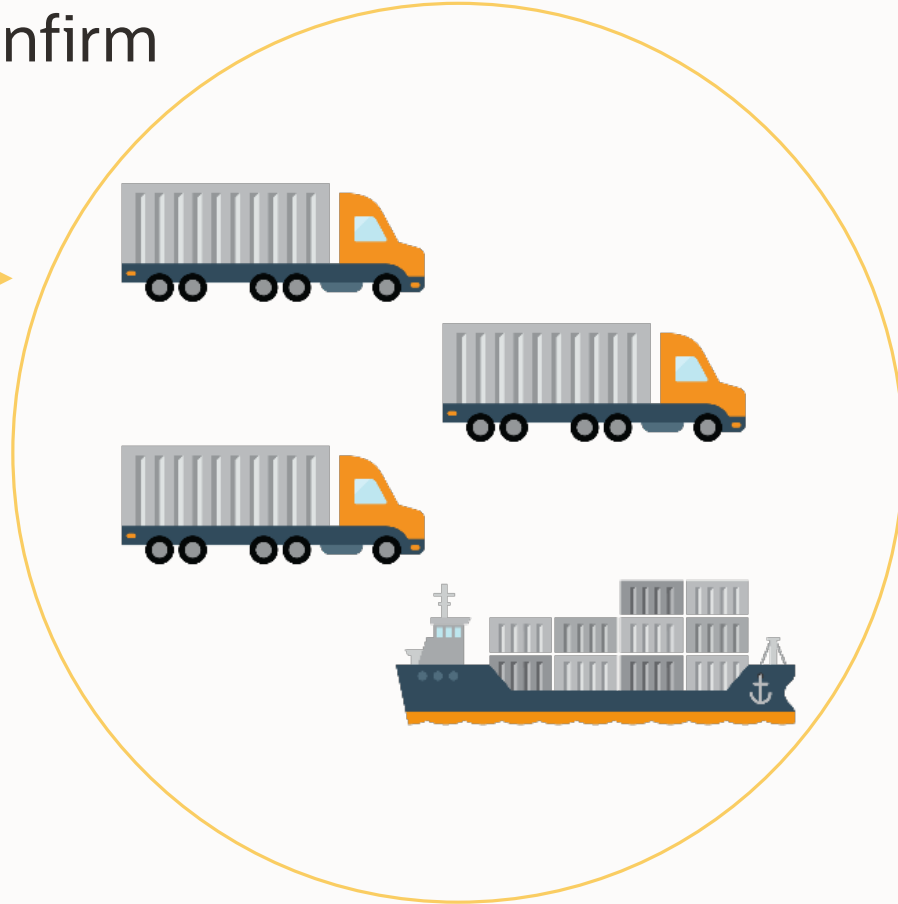
- Ability to Enable/Disable License Plate Breakdown
- Ability to identify a license plate as a partial plate
- Enhanced picking logic to allow sequencing and breakdown of full and partial plates

Sales Order Lines In-Transit Accounting



Batch Load Confirm

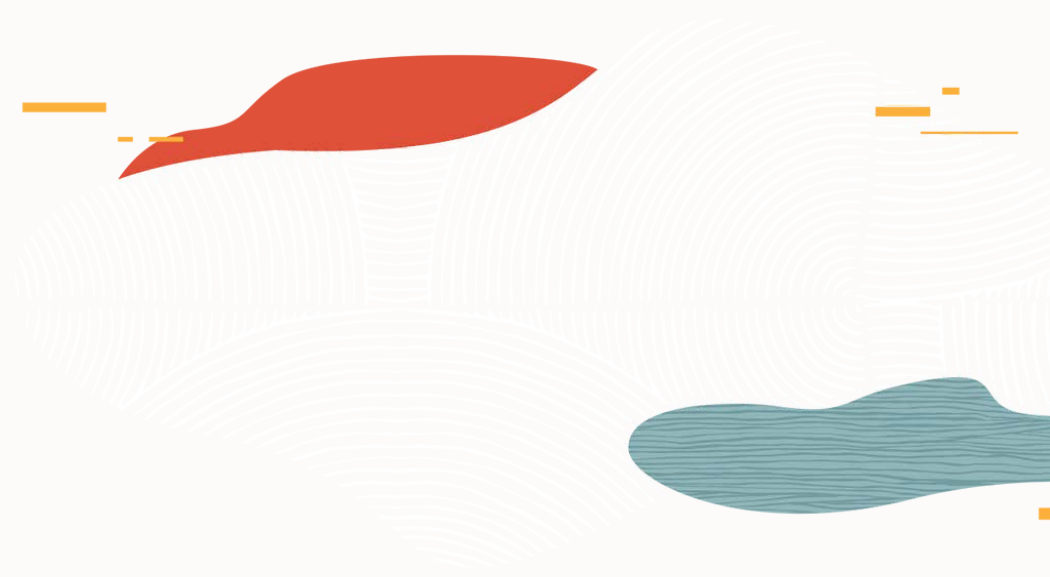
The ability to confirm loads in batch.



Non-compartmentalized Loads Only

- Standards
- Intransit

ORACLE



Resources

Additional Resources

Learn more by exploring [LearnJDE.com](https://www.oracle.com/learn/jde) and [Oracle.com](https://www.oracle.com)

[UX One](#)

[Notifications](#)

[Mobility](#)

[Orchestrator](#)

[Visual Builder Cloud Service](#)

[Oracle Digital Assistant](#)

[Transportation Management](#)

[Warehouse Management](#)

[Inventory Management](#)

[Outbound Inventory Management](#)

Thank You

Ervin Rhodes

Principal Product Manager



ORACLE