

October 22–25, 2018

SAN FRANCISCO, CA

#OOW18

# JD Edwards Update

Continuous Innovation Roadmap

Bob Monahan, VP Product Management

Gary Grieshaber, VP Product Management

Oracle JD Edwards

[oracle.com/openworld](http://oracle.com/openworld)

ORACLE  
OPEN  
WORLD

ORACLE

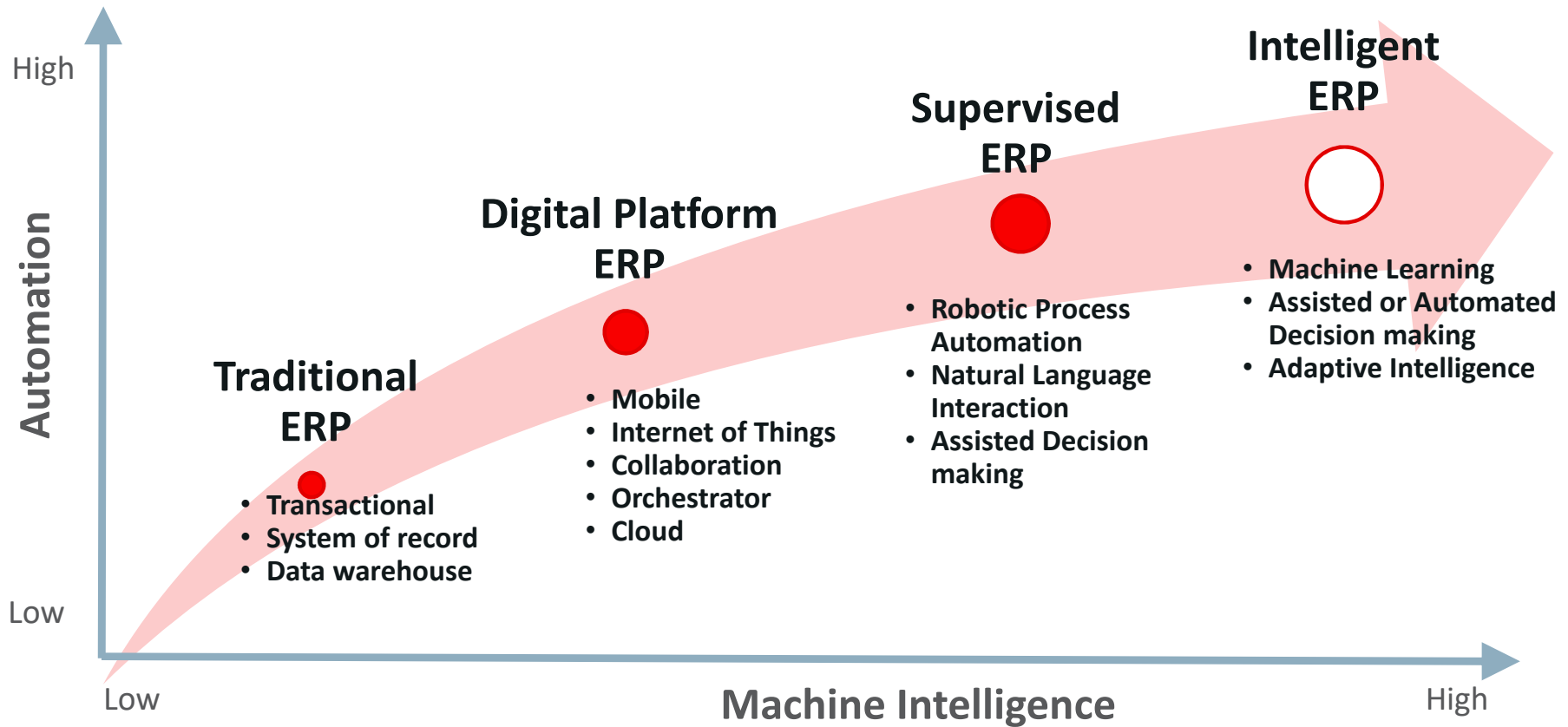
ORACLE<sup>®</sup>  
JD Edwards

Copyright © 2018, Oracle and/or its affiliates. All rights reserved. |

## Safe Harbor Statement

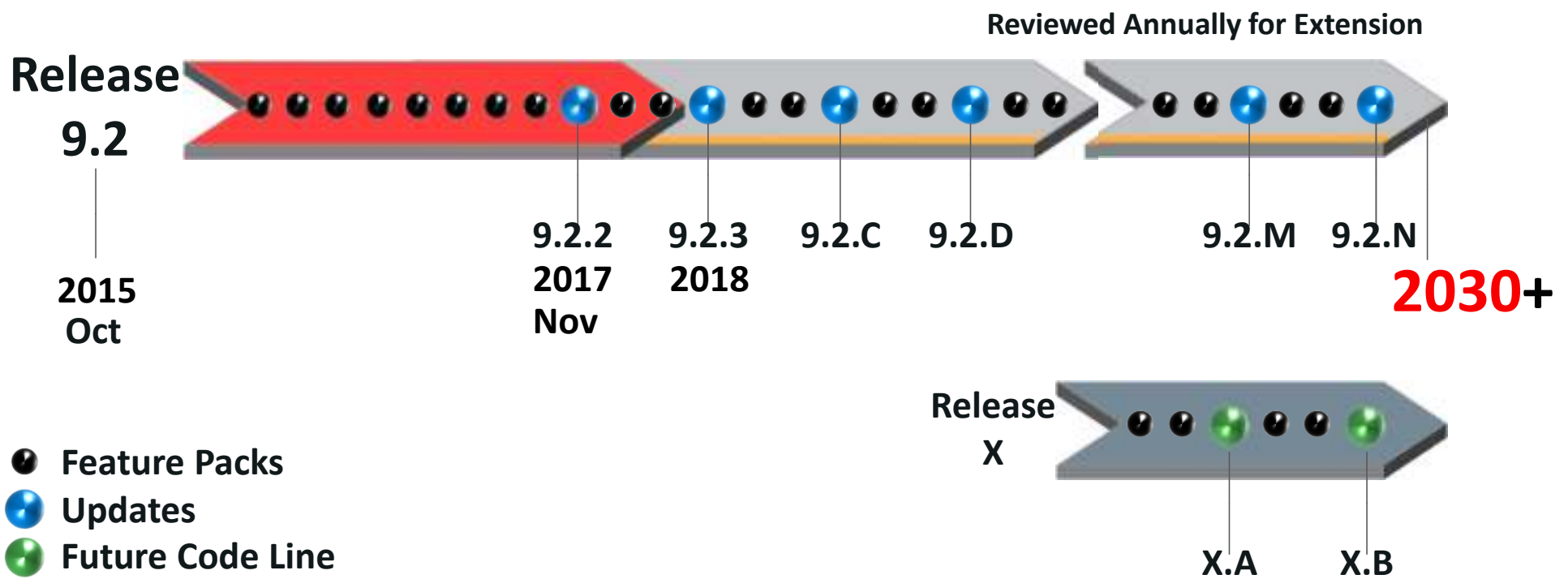
The following is intended to outline our general product direction. It is intended for information purposes only, and may not be incorporated into any contract. It is not a commitment to deliver any material, code, or functionality, and should not be relied upon in making purchasing decisions. The development, release, and timing of any features or functionality described for Oracle's products remains at the sole discretion of Oracle.

# JD Edwards Vision – Putting Intelligence into ERP



Planned

# JD Edwards EnterpriseOne Continuous Delivery



The above is intended to outline our general product direction. It is intended for information purposes only, and may not be incorporated into any contract. It is not a commitment to deliver any material, code, or functionality, and should not be relied upon in making purchasing decisions. The development, release and timing of any features or functionality described for Oracle's products remains at the sole discretion of Oracle.

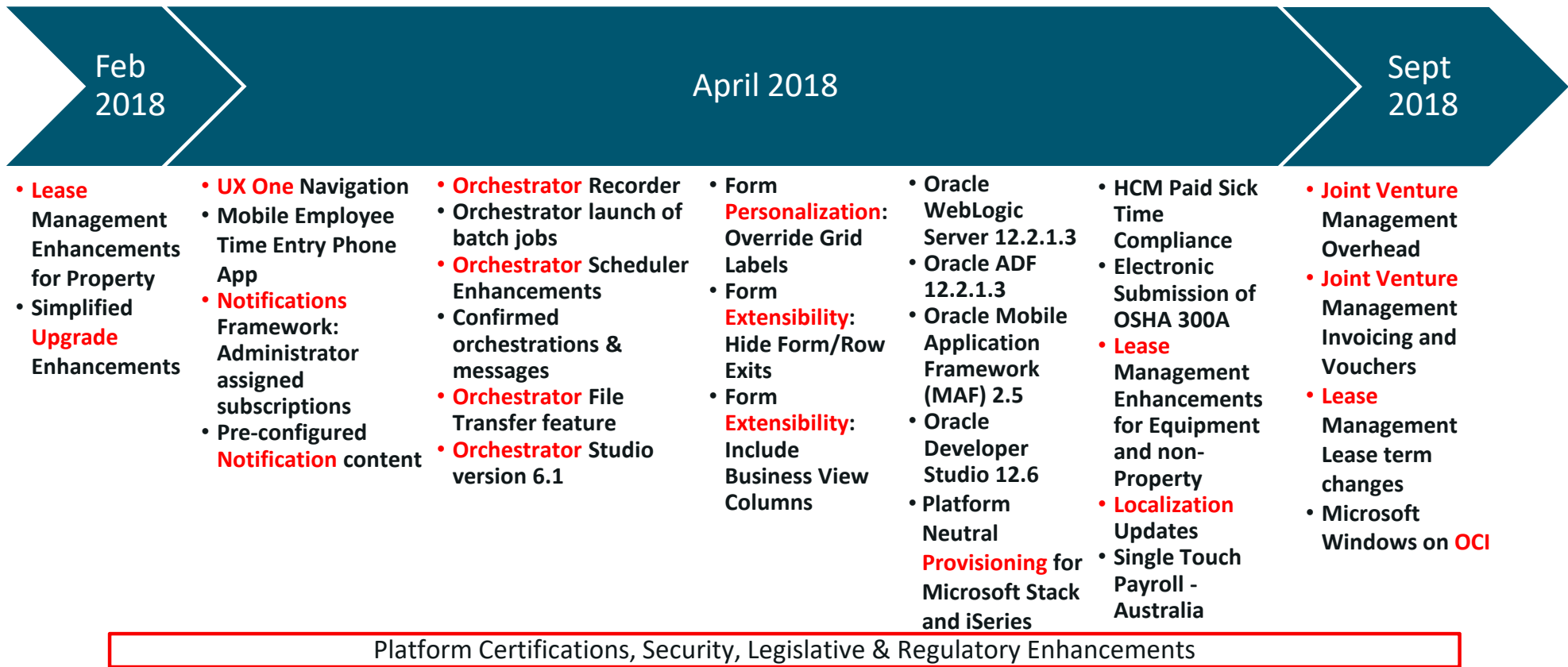
ORACLE

Copyright © 2018, Oracle and/or its affiliates. All rights reserved. |

As of October 19, 2018 7

# JD Edwards EnterpriseOne Releases

## 2018 Feature Highlights – Release 9.2 Code Line



Visit [LearnJDE.com](http://LearnJDE.com) for details

ORACLE

# Medical Device Manufacturer with 3,500 Users Globally Upgrades to 9.2 in 6 Months

**Single Instance with Multiple Time Zones and Languages**



Edwards

Edwards Lifesciences

Irvine • California

- Used Simplified Upgrade
- Seven manufacturing locations globally
- Used OATS for testing and UPK for training
- Users like the new user interface: advance queries, search history, favorites
- Exploring E1 pages and looking at One View Reporting
- Implementing Mobility

ORACLE

# Future EnterpriseOne Solutions

Planned

## Planned and Research Highlights on 9.2 Code Line

### Planned

#### ERP

##### Modernization

- JVM Allocations
- JVM Operational Reporting
- JVM Cash Calls
- Picking Optimization
- Pre-configured Notification Content
- Customer Driven enhancements

#### Digital

##### Transformation

- Real Time Orchestration (Table event)
- CSV input format to Orchestrator
- Management and Monitoring of Orchestrations and Notifications
- Modernize Work Center

##### Platforms

- Visual Studio 2017 & Windows SDK10
- Oracle Dbase 18c
- 64 Bit Enablement

#### Operational

##### Simplification

- OCI Automated Reference Architecture
- Simplified Upgrade on One-Click Provisioned Target Microsoft Stack

##### UX One / UDO

- Simplified UDO Management
- UDO White Papers
- UDO Guided Learning Paths
- Form Extensibility add columns to Edit Forms

- Expanded Delivery Methods
- Personalization Frameworks
- Experience Extension
- Logic Extension
- Data Extension
- Easier Upgrades
- Guided Special instructions
- Automated Patching
- Delivery of JD Edwards Trial Edition as a Container

### Research

- One View Scheduler Automation and Simplification
- Automation for Batch & Queue Management
- Mobile Attachments
- Mobile Windows 10 Samples
- Override Billable Unit Price to Zero for Service Parts
- JVM AFE's
- JVM Purge & Archive
- Mobile Notifications w/MCS

- Global Lot Master
- LPN Enhancements
- Reverse Ship Confirm
- WO Activity Rules for Manufacturing
- WO Ledger for Manufacturing
- Base Price Interoperability
- Tax Overrides for Landed Cost
- Impact Analysis for Multiple ESUs
- Smart Grid and Smart Search

- Conversational Experience: Chat bots
- Augmented Reality
- Artificial Intelligence and Virtual Assistants
- Blockchain
- Ease of Access and Configuration
- Proactive Administration
- Centralized Administration

The above is intended to outline our general product direction. It is intended for information purposes only, and may not be incorporated into any contract. It is not a commitment to deliver any material, code, or functionality, and should not be relied upon in making purchasing decisions. The development, release and timing of any features or functionality described for Oracle's products remains at the sole discretion of Oracle.

ORACLE

# JD Edwards Recent Innovations & Roadmap

# Focused Investing for Your Future

Enabling the Customer Journey into a Digital Enterprise



A man in a dark suit and light-colored shirt is shown from the chest up, interacting with a futuristic, transparent digital interface. His right hand is extended, with his index finger touching one of several glowing, rectangular digital elements. The background is a light gray with faint, overlapping geometric shapes, suggesting a high-tech or virtual environment.

## User Experience

# UX One Leverages these User Defined Objects

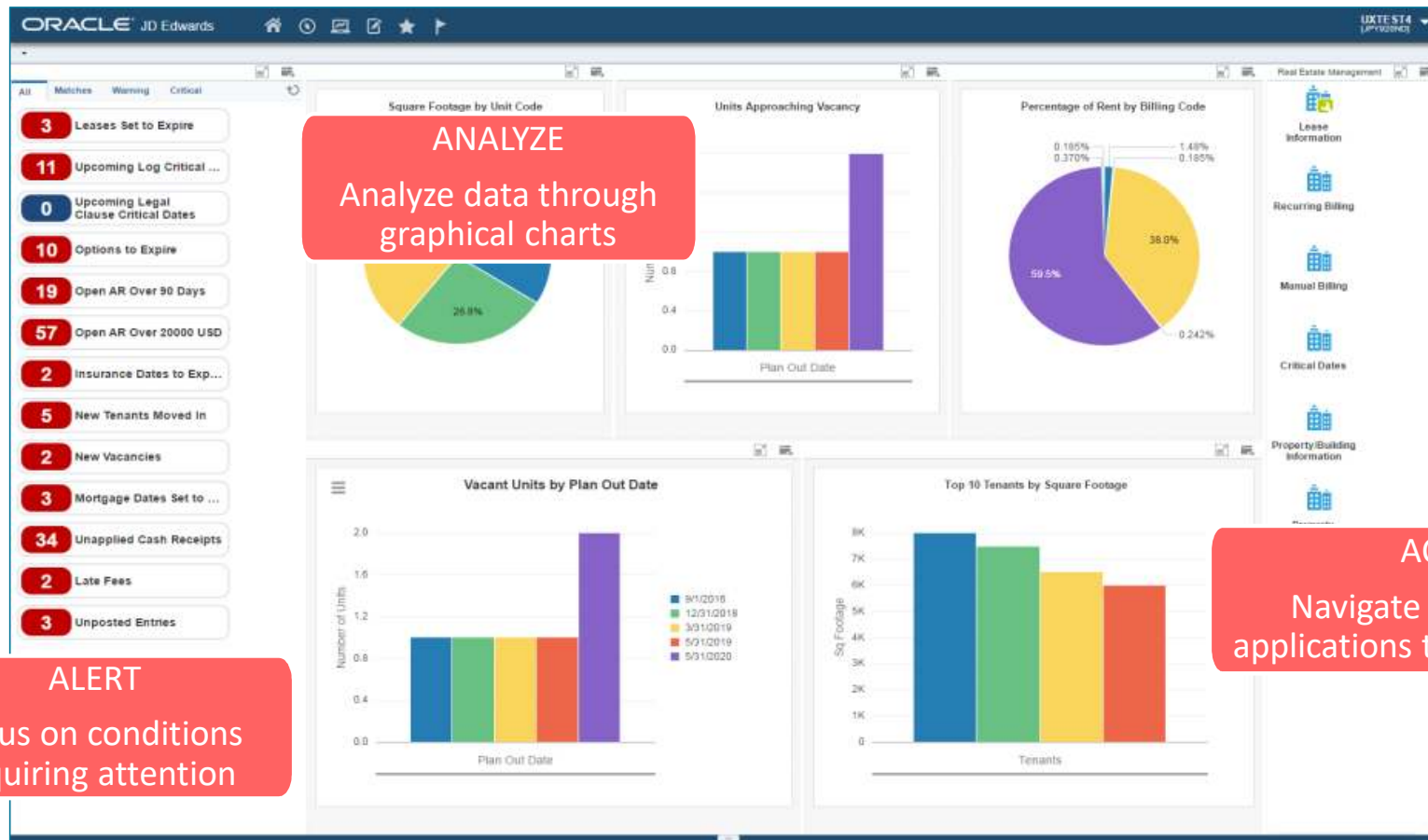
All these types of UDOs are easily managed with the same lifecycle tool



Query Manager   One View   CafeOne   Watchlists   Composed Pages   Form Personalization   List View   Enterprise Search   Orchestrator Studio   Form Extension   Notifications

ORACLE

# UX One - Role Based Landing Page (52 Delivered)



# JD Edwards UX One Customer Adoption

## UX One Component Usage

92%

- CafeOne
- Grid Formats
- Form Personalization

74%

- Form Extension
- Notifications
- Watchlists

51%

- Landing Pages
- Search
- List View

## Customer Go-Lives

30%

Currently live on 9.2 and using UX One components

44%

Planning to Go-live within 6 months on 9.2 with UX One as part of their Go-Live

26%

Planned future 9.2 go-live with UX One as a key element

Based on customer survey data July 2018

# JD Edwards UX One Customer Adoption

## Customers Success



THE DIXIE GROUP

### Composite Pages

*"Users love the Composite pages we're using for Receiving and Purchasing. They are easy to create, they speed up entry, and it gives them visibility to the process flow."*



*With us, it's personal.™*

### Watchlists

*"Watchlists have simplified the process for vendor management by tracking vendor's liability insurance to ensure they are compliant."*



### E1 Pages, Watchlists & CafeOne

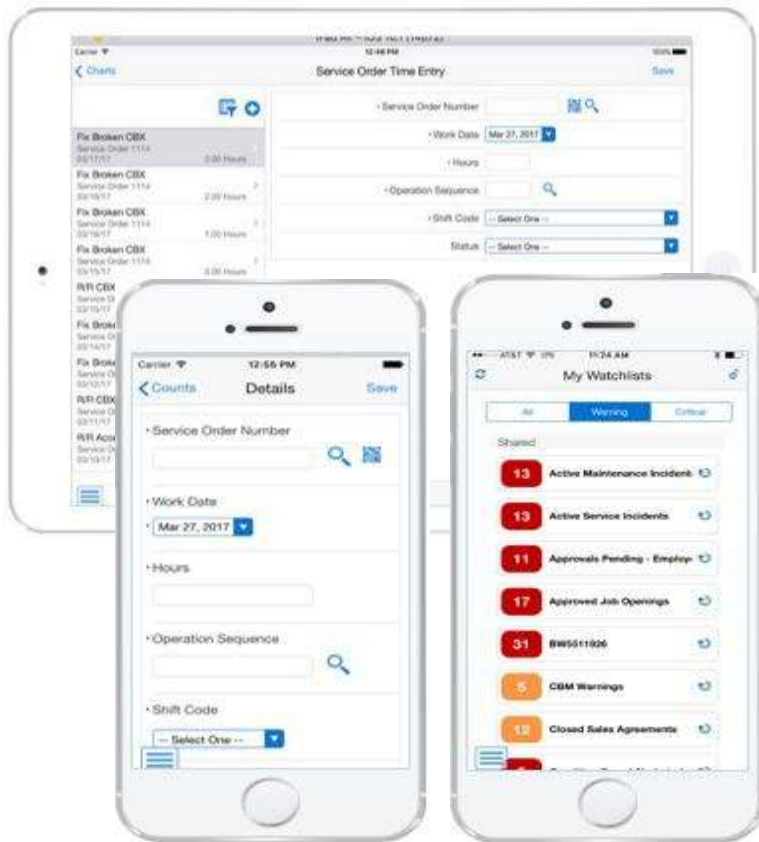
*"We needed to provide a more modern user experience by restructuring menus and implementing E1 pages, Watchlists, and CafeOne."*



### CafeOne

*"Using CafeOne with Address Book showing Google Maps to help with directions and make sure trucks can access their store."*

# JD Edwards Mobile Applications Gives You a Jumpstart



**Accelerate Business Execution**  
**Take Action at the Point of Process**

Leverage:

- Oracle Mobile Core Integration
- Barcode Scanning
- Location Services
- Native Device Integration

**ORACLE**

Copyright © 2018, Oracle and/or its affiliates. All rights reserved. |

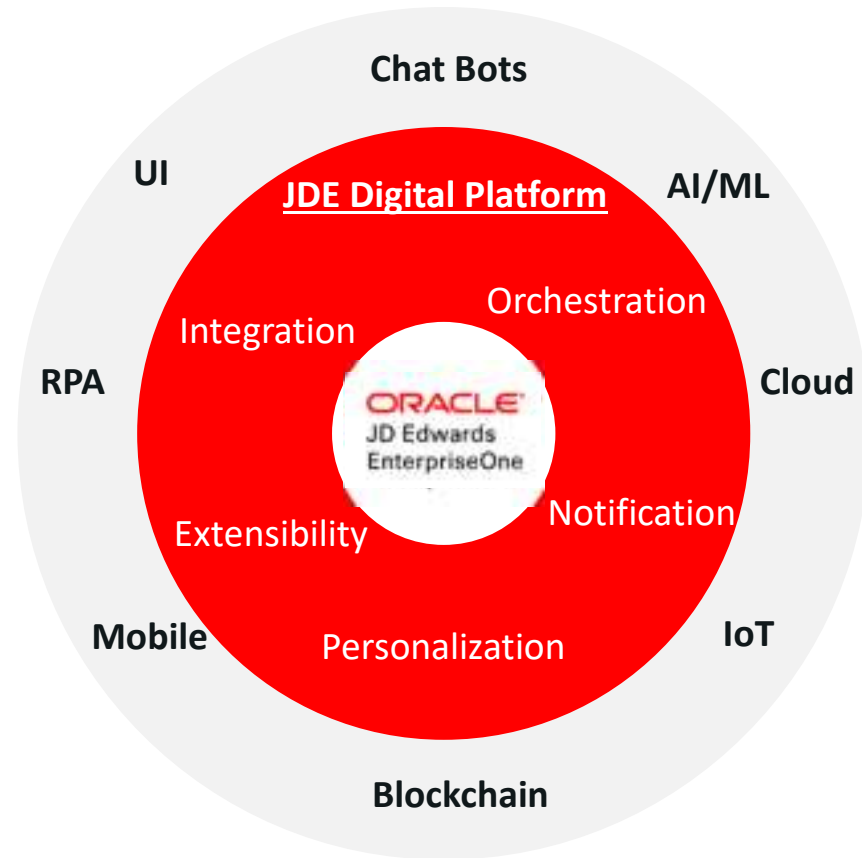
The background image is a composite of digital and technological elements. It features a glowing blue globe in the lower-left quadrant, with numerous bright blue lines radiating from it, suggesting a global network or data flow. The upper-right portion of the image shows a close-up, high-contrast view of a circuit board or microchip, with various components and traces visible in shades of blue and white. The overall color palette is dominated by deep blues and bright cyan/white highlights, creating a futuristic and high-tech atmosphere.

## Digital Technologies

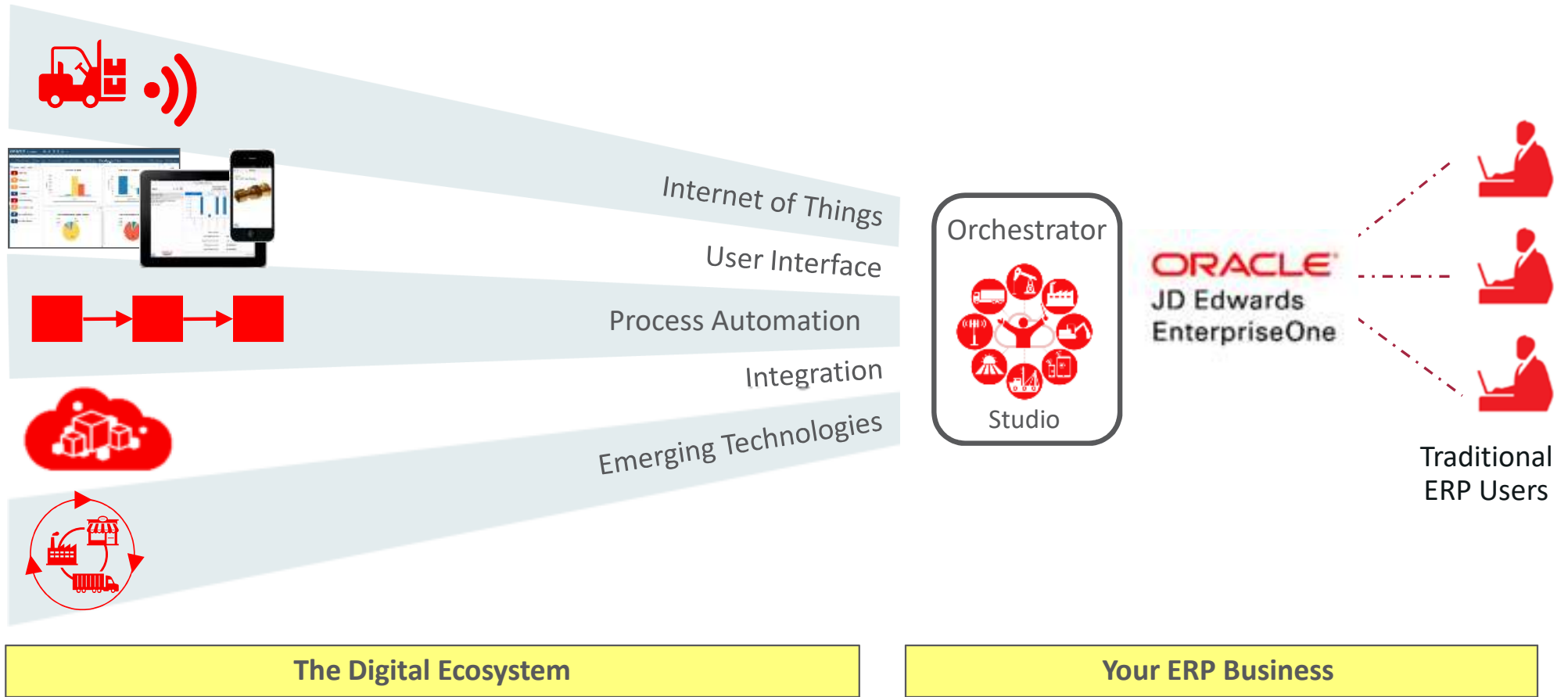
# JDE Digital Transformation

## Transform Your Processes

- Build digital capabilities into your processes
- Automation of manual tasks
- Eliminate errors
- Streamline processes
- Extend enterprise to mobile workers, field staff, machines, and suppliers



# Orchestrator – Gateway to Digital Transformation



# Manufacturer leverages the JD Edwards Orchestrator to deploy BOT which automates routine financial transactions

**Accounting BOT eliminates manual data entry and errors**



**STANLEY**  
Engineered Fastening

Stanley Fasteners  
Chesterfield • Michigan

## Old Way

- Corporate creates 100s of G/L entries sent to the divisional level via spreadsheet
- Spreadsheets manually uploaded to the divisional Financial system

## New Way

- The Finance Robotics Process Automation Team automated the process leveraging the JD Edwards Orchestrator tool
- Automation Anywhere was picked to create Bots to replace this manual work
- Large and tedious data inputs can be done in a matter of minutes

*“We no longer have to type the data and just saved several minutes for each transaction”*

**ORACLE**

# Digital Finance Chatbot

## Automating the voucher approval process

The screenshot shows the Oracle JDE Edwards interface with a chatbot overlay. The chatbot, titled "process vouchers", is integrated into the UX One page. It displays a series of messages and buttons for voucher approval.

**Chatbot Messages:**

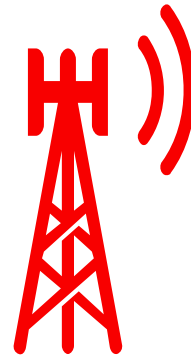
- There are 31 voucher batches pending. Would you like me to review, approve and post them?  
**Yes** **No**
- Reviewing voucher batches...
- I've reviewed, approved and sent for posting 30 of the 31 voucher batches.
- 44 vouchers totaling \$1,018,419.43
- I did not approve or post voucher batch 32204.
- It contains voucher 1287 PV for supplier Parts Emporium that is above their normal amount.
- Voucher batch 32204  
2 Documents - \$2,351,059.00  
**Review**

The background interface shows various financial reports and dashboards, including "Payments Due with Discount Available by Supplier", "Payments Due", "Bank Account Balance for Current G/L Period", and "Payments Due".

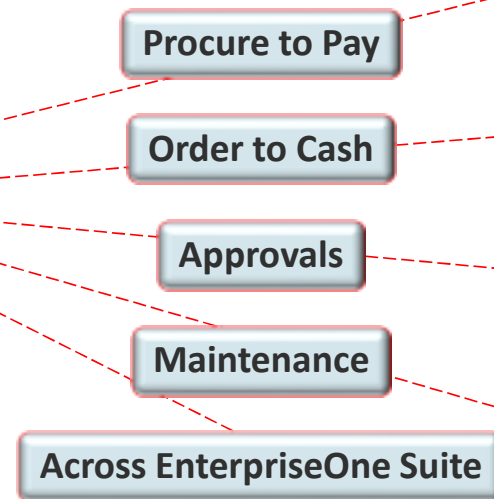
- Chatbot integrated into a UX One page
- Leverages Oracle's Mobile Cloud Service Chatbot
- Integrates with the JDE Orchestrator for intelligent processing and rules
- Automates routine A/P period close process
- See [Collaborate 2018 – You Make it Happen](#) for the full demo

# EnterpriseOne Notifications

Stay in touch with your business and act fast



## Notifications



Mobile

Text

Browser

E-mail

Message  
Center

Roles

External  
parties

Easy to create your own.

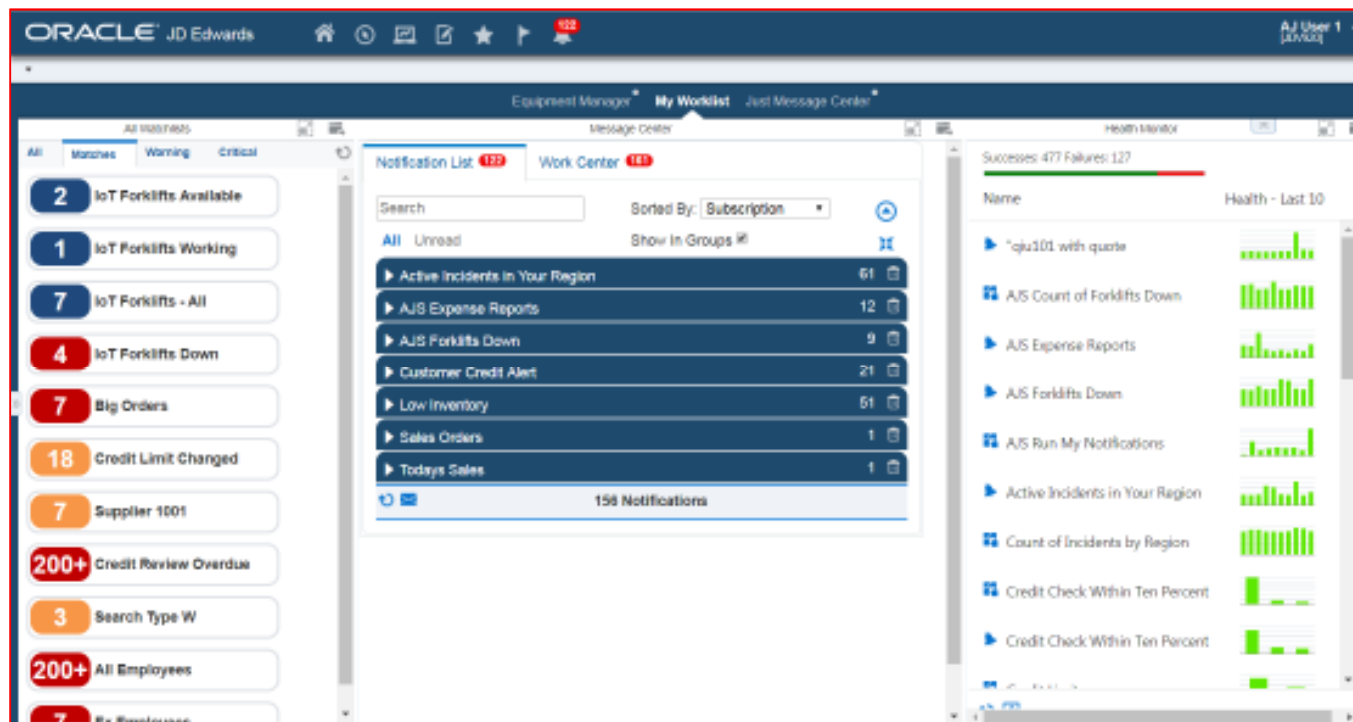
Immediate business value with **55** pre-configured notifications.

ORACLE

Planned

# My Worklist

Single pane for Watchlists, Message Center, and Orchestration Health



Preconfigured EnterpriseOne page:

- Watchlists
- Message Center
- Health Monitor

ORACLE



**ERP**

# Joint Venture Management

## Solution for Managing Partners of a Joint Venture

### Use Joint Venture Management to:

- Maintain partner division of interest
- Distribute costs and revenue
- Bill and pay partners
- Provide operational and financial reports

Available with EnterpriseOne 9.2 Financials



Engineering & Construction



Oil and Gas



Real Estate



Agribusiness

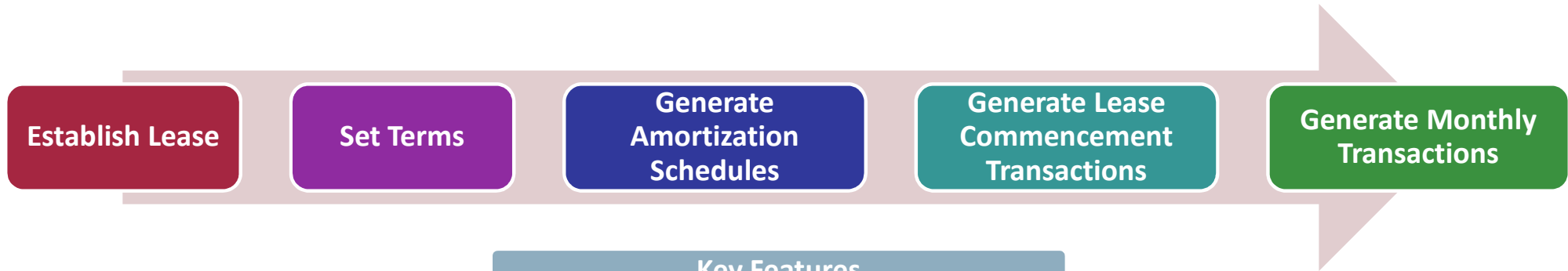


Other industries

# Lease Accounting For Property and Non-Property

## Meeting Your Global Accounting Requirements

- Simplify and automate global lease administration
- FASB ASC 842 and IFRS 16 standards
- Available with EnterpriseOne 9.1 and 9.2



### Key Features

- ✓ Lessee accounting for property and non-property leases
- ✓ Lease terms change management
- ✓ Simplified lease management

- ✓ Lessor accounting (FASB 13) for property leases - straight line rent
- ✓ Revenue recognition for lease management companies

**Recent and  
Planned \***

# Sample Recent Application Enhancements

## Capital Asset Management

Preventive Maintenance Schedules

Simplified Work Order Copy

## Financials

Payment Control Groups \*

Configure Bank Account Required Fields

## Manufacturing

Prevent Work Orders For Obsolete Items

Automatically Attach Parts List & Routing

## Human Capital Management

Benefits Preview \*

Paid Sick Time Compliance

## Sales

Refresh Inventory Commitments

Header to Detail Defaults in Sales Order Entry

## Procurement

Basket Pricing in Procurement

Voucher Match for Split Lines BSSV \*

A close-up photograph of a person's hands holding a large, blue, cloud-shaped object. The object has a gradient from light blue at the top to a darker blue at the bottom. The person is wearing a white lab coat. The background is blurred.

## Operational Simplification

# Getting to Vanilla

All the Ways to Tailor JD Edwards do not have the same cost



## Configuration

Setup EnterpriseOne to meet the needs of the organization's business processes



## Personalization

UI changes to improve the experience of each business user



## Extensibility

New and changed functional flows that extend business logic



## Customization

Technical changes to forms, logic and database to solve company-specific business requirements

Lower

**Cost**

Higher

# Lowering the Total Cost of Ownership

## Enabling Customers to Focus on the Business

### Recent Highlights

- Object Tracking and Usage
- System Health Checks
- User Defined Object management
- Code Current Upgrades

### Planned and Researching

- Personalization improvements (planned)
- System self monitoring (planned)
- Automated patching (planned)
- Elastic deployment – containers (research)



***Continued Low Total Cost of Ownership and Simplification on your JD Edwards platform!***

# Upgrade Resources on LearnJDE.com

Take Advantage of Enhancements and Modern User Interface with Upgraded System



## Continuous Innovation

Continuous Delivery gives you a tool to better align IT and the line of business organizations you support by scheduling the adoption of enhancements based on how you best serve the business rather than on an end-of-support date.



## Minimize Business Disruption

JD Edwards upgrade framework preserves business configuration, business data, and minimizes the impact to customizations. This framework enables to release 9.2 in weeks with not business disruption.



## Reduced Level of Effort

JD Edwards has streamlined the upgrade framework to include upgrading to a code current environment with the latest Tools release and application enhancements, preserve more customizations, and minimize cut-over times. This reduces the time and effort to upgrade to weeks and a reduced cost.



## Accelerate Adoption

With JD Edwards upgrade framework and continuous delivery model, customers can leverage new capabilities like mobile, UX One and Notifications to solve business problems in days and weeks instead of long and costly implementation projects.

## Get Started

- > [Sample EnterpriseOne Business Case](#)
- > [Product Catalog](#)
- > [Whitepaper: Upgrade or Rip-and-Replace Your Enterprise Resource Planning Solution](#)
- > [Oracle Technical Catalog](#)
- > [White Paper: E1 Strategy Council Upgrade Best Practice](#)
- > [Platform Statement of Direction](#)

## Implement

- > [Information Center: JD Edwards EnterpriseOne 9.2](#)
- > [Get Proactive with JD Edwards](#)
- > [Presentation: JD Edwards EnterpriseOne System Extensibility](#)
- > [9.2 Business Process Models](#)
- > [Certifications \(Minimum Technical Requirements\)](#)
- > [Update Center for JD Edwards](#)

## Use

- > [Upgrading EnterpriseOne Tools Release for Server Manager, Deployment Server, Enterprise Server and HTML Server - 9.2.x and Above](#)
- > [Installation and Upgrade Documentation Release 9.2.x](#)
- > [Patching & Maintenance Advisor: Software Updates for JD Edwards \(JDE\) EnterpriseOne 9.0, 9.1 and 9.2](#)
- > [Server Manager Guide](#)

# Oracle JD Edwards & Securing your data

## Keeping an Eagle's Eye on JD Edwards Security



- Oracle has the industry's best security vulnerability process
- JD Edwards EnterpriseOne leverages this expertise
- 4 security release per year to the JD Edwards tools layer
- Enabling standards based enterprise security solution

*With JD Edwards, security is “built in”*



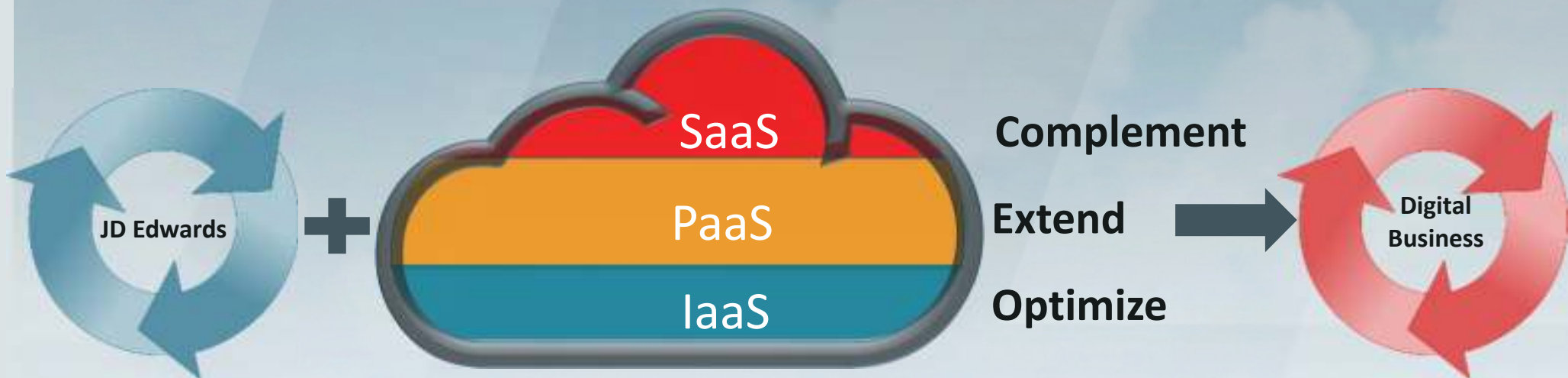
# JD Edwards and Cloud

ORACLE

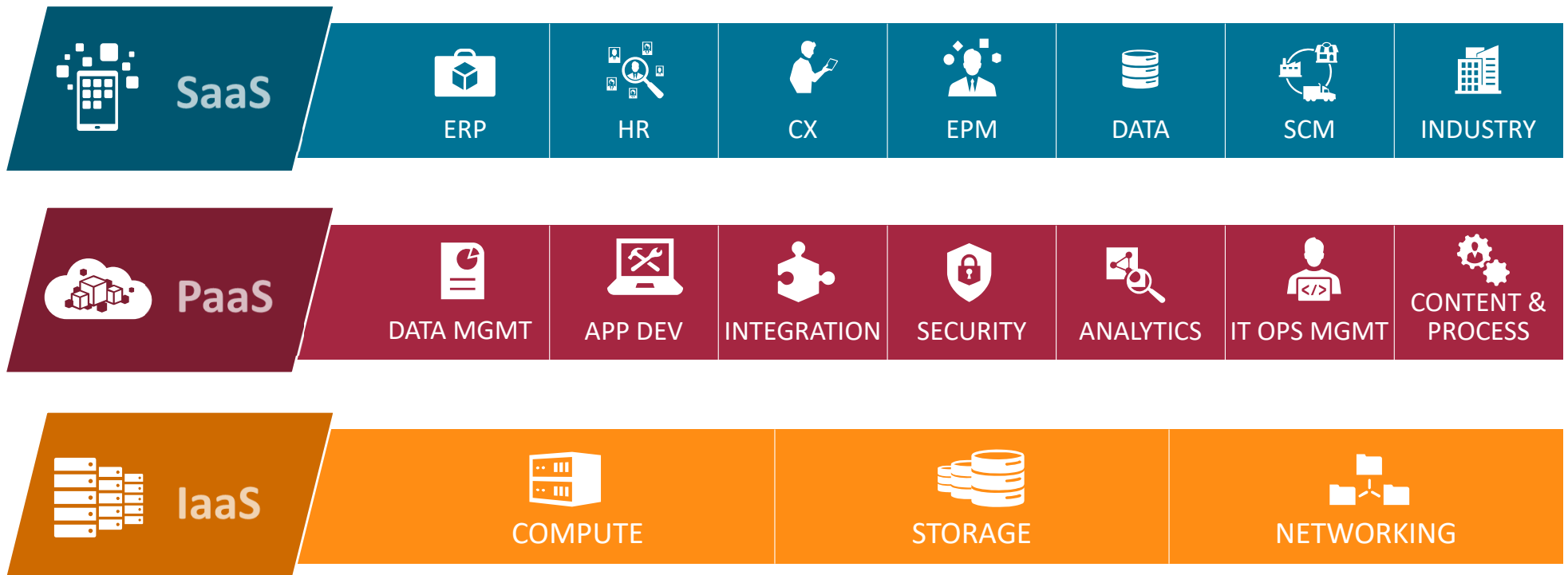
Copyright © 2018, Oracle and/or its affiliates. All rights reserved. |

# JD Edwards Practical Paths to Oracle Cloud

Providing customers choice and control on their Cloud journey



# Oracle Cloud: Complete, Integrated, Open



# Examples of Oracle SaaS Cloud Services with JDE

CX

CRM  
CPQ  
Service

ERP

Accounting Hub  
Project Portfolio  
Management  
Procurement  
Purchasing for  
Indirect Procurement

EPM

Enterprise Planning  
and Budgeting  
Enterprise  
Performance  
Reporting  
Financial  
Consolidation and  
Close

SCM

In-Memory Cost  
Mgmt  
Transportation  
Management  
Global  
Trade Management  
Supply Chain  
Planning

HCM

Global Human  
Resources  
Recruiting  
Learning

# Accelerate Innovation

**Business  
Transformation**

**PaaS**

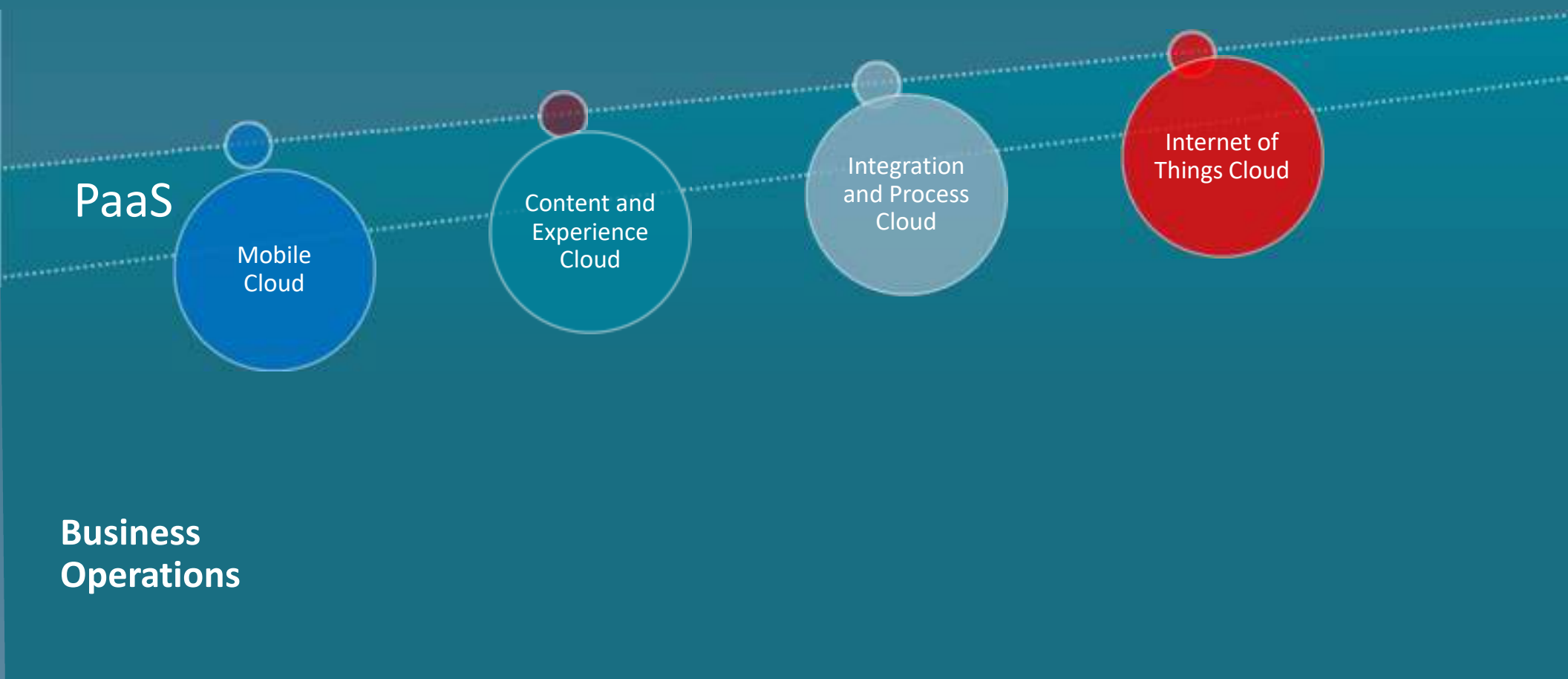
Mobile  
Cloud

Content and  
Experience  
Cloud

Integration  
and Process  
Cloud

Internet of  
Things Cloud

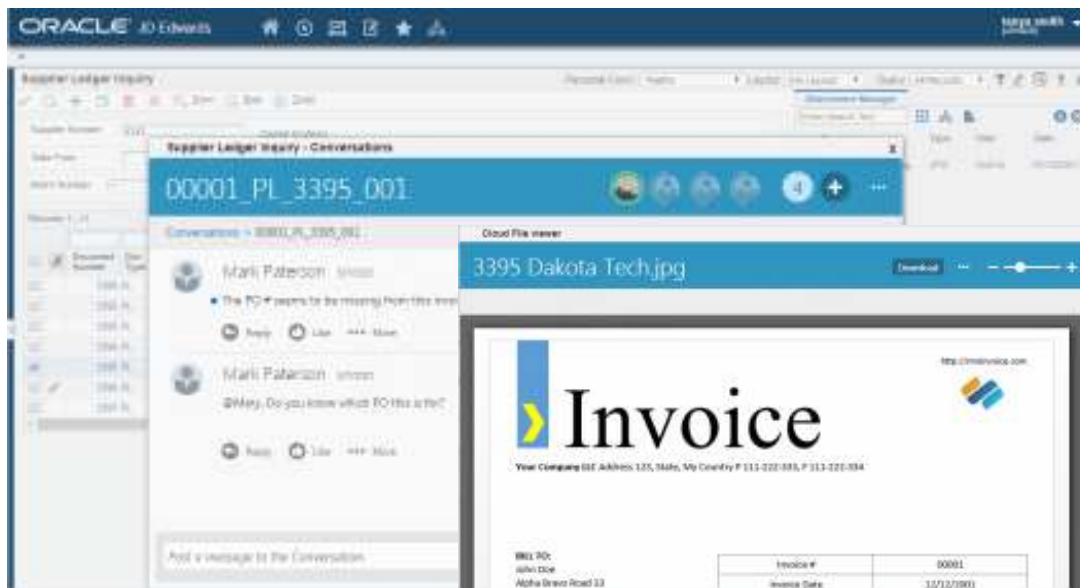
**Business  
Operations**



# Content and Experience Cloud for JD Edwards

## Out-of-the-box Integration

- In-context transaction related content and collaboration
- Collaborate inside and outside of JDE
- Engage with employees, customers, suppliers, partners



From any browser

# JD Edwards on Oracle Cloud IaaS

Running JDE on Oracle Cloud Benefits Your Business Without Business Process Change



ORACLE<sup>®</sup>  
Cloud



Leverage the  
JD Edwards you **OWN**



Run the  
JD Edwards you **KNOW**



Differentiate through the  
JD Edwards you **CONFIGURED**

ORACLE<sup>®</sup>

Copyright © 2018, Oracle and/or its affiliates. All rights reserved. |

# Optimize JDE on Oracle Cloud IaaS



**Customer  
Datacenter**

- Lift and Shift: Modernize Infrastructure
- Move & Improve: With Simplified Upgrade
- Re-platform/Platform Migration



**Oracle Cloud**

# Lift & Shift Options



**Customer  
Datacenter**

## ➤ E1 9.2 on Oracle TECHNOLOGY

- Tooling: One Click Provisioning + Migration Utilities.
- Platform: Oracle Linux, Oracle DB
- Duration: Few days to a week

## ➤ E1 9.2 on Microsoft Windows

- Tooling: One Click Provisioning + Migration Utilities.
- Platform: Microsoft Windows, Oracle DB, SQL Server DB
- Duration: Few days to a week

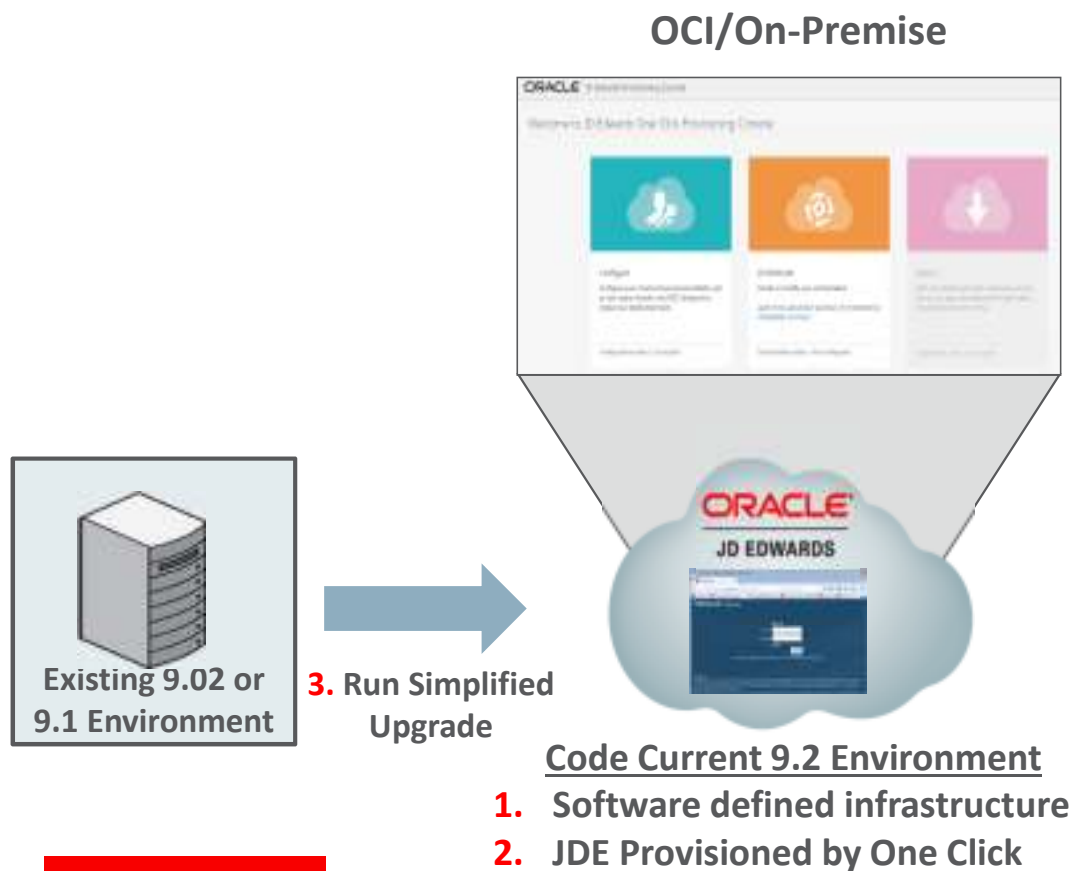
## ➤ E1 9.1 on Oracle TECHNOLOGY or Windows

- Traditional Install for target setup
- Migration Utilities to move data
- Duration: Few weeks



**Oracle Cloud**

# Move and Improve with Simplified Upgrade



- Reduce Time and Effort to patch 9.2 as part of the Upgrade
- Move to Cloud and Upgrade to 9.2 as a single process
- Support for Oracle and Microsoft technology
- JD Edwards EnterpriseOne on OCI [Reference Architecture](#)

ORACLE®