

## List of pages in this Trip Kit

Trip Kit Index

Airport Information For OOMS

Terminal Charts For OOMS

Revision Letter For Cycle 02-2017

Change Notices

Notebook

## General Information

Location: MUSCAT OMN  
ICAO/IATA: OOMS / MCT  
Lat/Long: N23° 36.0', E058° 17.0'  
Elevation: 49 ft

Airport Use: Public  
Daylight Savings: Not Observed  
UTC Conversion: -4:00 = UTC  
Magnetic Variation: 1.0° E

Fuel Types: 100 Octane (LL), Jet A-1  
Repair Types: Minor Airframe, Minor Engine  
Customs: Yes  
Airport Type: IFR  
Landing Fee: Yes  
Control Tower: Yes  
Jet Start Unit: No  
LLWS Alert: No  
Beacon: No

Sunrise: 0245 Z  
Sunset: 1356 Z

## Runway Information

Runway: 08L  
Length x Width: 13123 ft x 197 ft  
Surface Type: asphalt  
TDZ-Elev: 25 ft  
Lighting: Edge, ALS, Centerline, REIL, TDZ

Runway: 26R  
Length x Width: 13123 ft x 197 ft  
Surface Type: asphalt  
TDZ-Elev: 19 ft  
Lighting: Edge, ALS, Centerline, REIL, TDZ  
Displaced Threshold: 525 ft

## Communication Information

ATIS: 126.800  
Muscat South Tower: 118.400  
Muscat Tower: 118.825  
Muscat Ground: 121.800  
Muscat Clearance Delivery: 125.575  
Muscat Approach: 121.200

OOMS/MCT  
MUSCAT INTL

JEPPESEN

30 SEP 16

10-1P

Eff 13 Oct

MUSCAT, OMAN  
AIRPORT BRIEFING

---

## 1. GENERAL

---

### 1.1. ATIS

ATIS 126.8

### 1.2. OTHER INFORMATION

Large solitary predatory birds.

RWY 26R right-hand circuit.

---

## 2. ARRIVAL

---

### 2.1. COMMUNICATION FAILURE PROCEDURES

At or above 9000' QNH:

- if in VMC, continue flight in VMC;
- if in IMC, proceed direct to Muscat DVOR/DME at last assigned level. If unable to land, climb in DVOR/DME holding pattern and depart controlled airspace at applicable minimum enroute level, proceed to alternate.

Below 9000 QNH:

- if in VMC, continue flight in VMC;
- if in IMC, when on a heading to intercept RWY 08L/26R extended centerline and a failure is experienced or suspected, make the shortest turn onto a heading of 020° MAG, climb to 5000' QNH, proceed to Muscat DVOR/DME. If unable to land, climb in the DVOR/DME holding and depart controlled airspace at the applicable minimum enroute level, proceed to alternate.

Due to South of RWY 08L/26R extended centerline, monitor position on DVOR/DME or LLZ when intercepting heading. Pilots must ensure that they do not proceed through the extended centerline unless positively instructed by ATC.

### 2.2. NOISE ABATEMENT PROCEDURES

To reduce ACFT noise disturbance around the APT, it is recommended that ACFT avoid exceeding idle reverse thrust when using engine reverse upon landing on RWY 08L between 1600 and 0200 UTC.

Unless it is necessary for operational or safety reasons, when using engine reverse, arrivals on RYW 08L between 1600 and 0200 UTC may not exceed idle reverse thrust.

### 2.3. OTHER INFORMATION

**WARNING:** Unless otherwise notified by ATC, pilots should only land on the RWY-in-use that is indicated by the flashing white REIL. Closed RWY will be marked by an illuminated white X and should not be used for landing under any circumstances.

ACFT on final may be subjected to unauthorized targeting by laser pointing devices. Pilots experiencing targeting must immediately advise ATC.

---

## 3. DEPARTURE

---

### 3.1. PUSH-BACK & TAXI PROCEDURES

Push-back clearance from TWR required for parking positions 1 thru 3, 14 thru 16, 35 and 36.

### 3.2. NOISE ABATEMENT PROCEDURES

All ACFT departing to the Northwest are required to avoid overflying OO(R)-7. Approach/Radar will issue appropriate headings to avoid this area.

# OOMS/MCT MUSCAT INTL



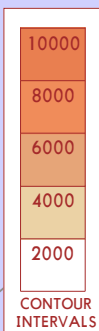
# MUSCAT, OMAN

10 JUL 15 (10-1R)

Eff 23 Jul RADAR MINIMUM ALTITUDES

Apt Elev  
49'

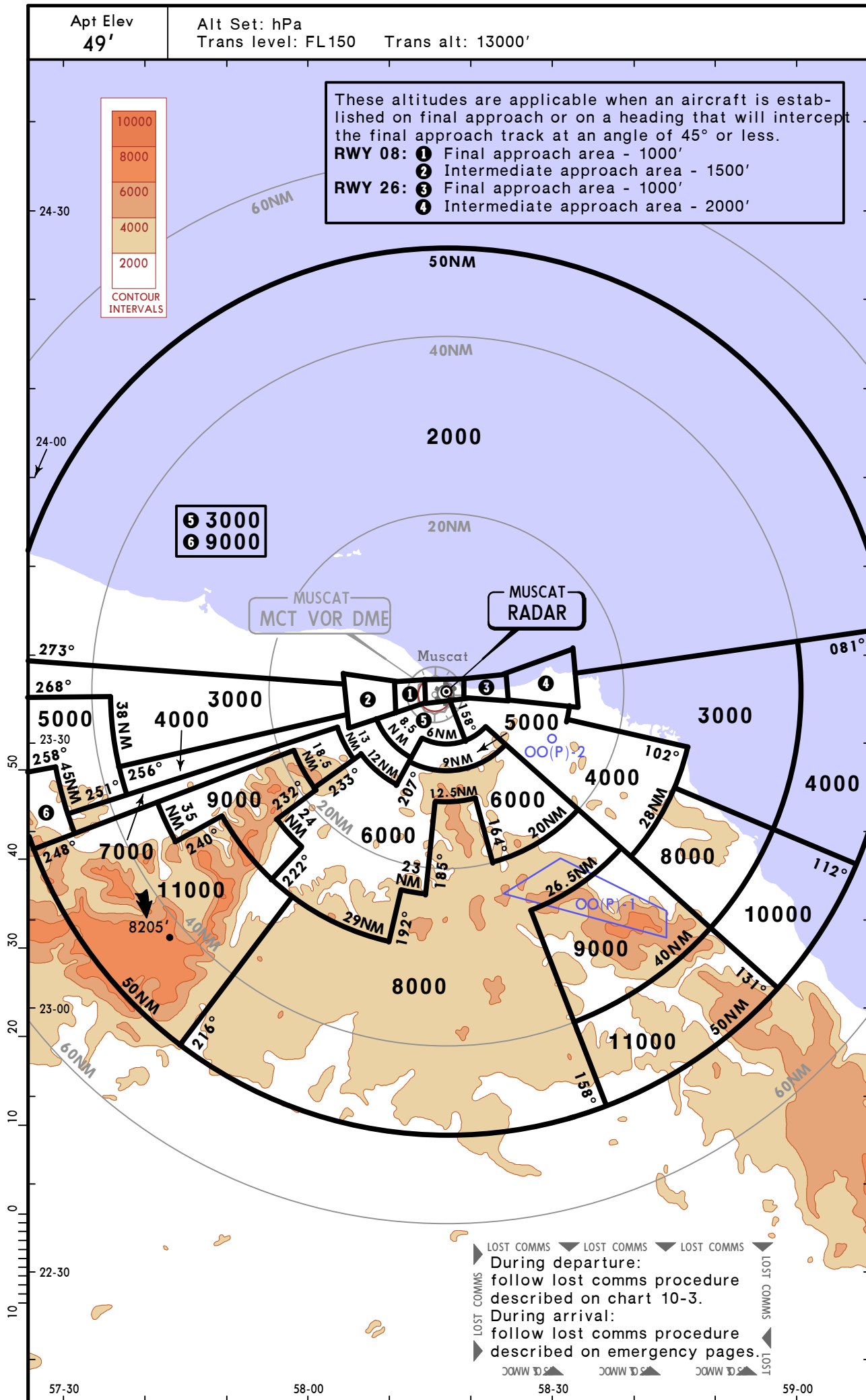
Alt Set: hPa  
Trans level: FL150 Trans alt: 13000'



These altitudes are applicable when an aircraft is established on final approach or on a heading that will intercept the final approach track at an angle of 45° or less.

**RWY 08:** ① Final approach area - 1000'  
② Intermediate approach area - 1500'

**RWY 26:** ③ Final approach area - 1000'  
④ Intermediate approach area - 2000'



LOST COMMS    ▾ LOST COMMS    ▾ LOST COMMS    ▾ LOST COMMS

During departure:  
follow lost comms procedure described on chart 10-3.

During arrival:  
follow lost comms procedure described on emergency pages.

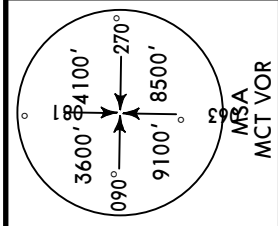
LOST COMMS    ▾ LOST COMMS    ▾ LOST COMMS    ▾ LOST COMMS

**OOMS/MCT**  
**MUSCAT INTL**

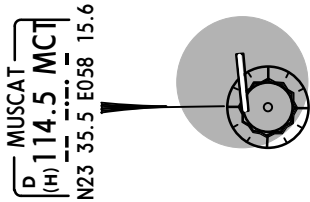
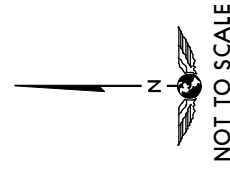
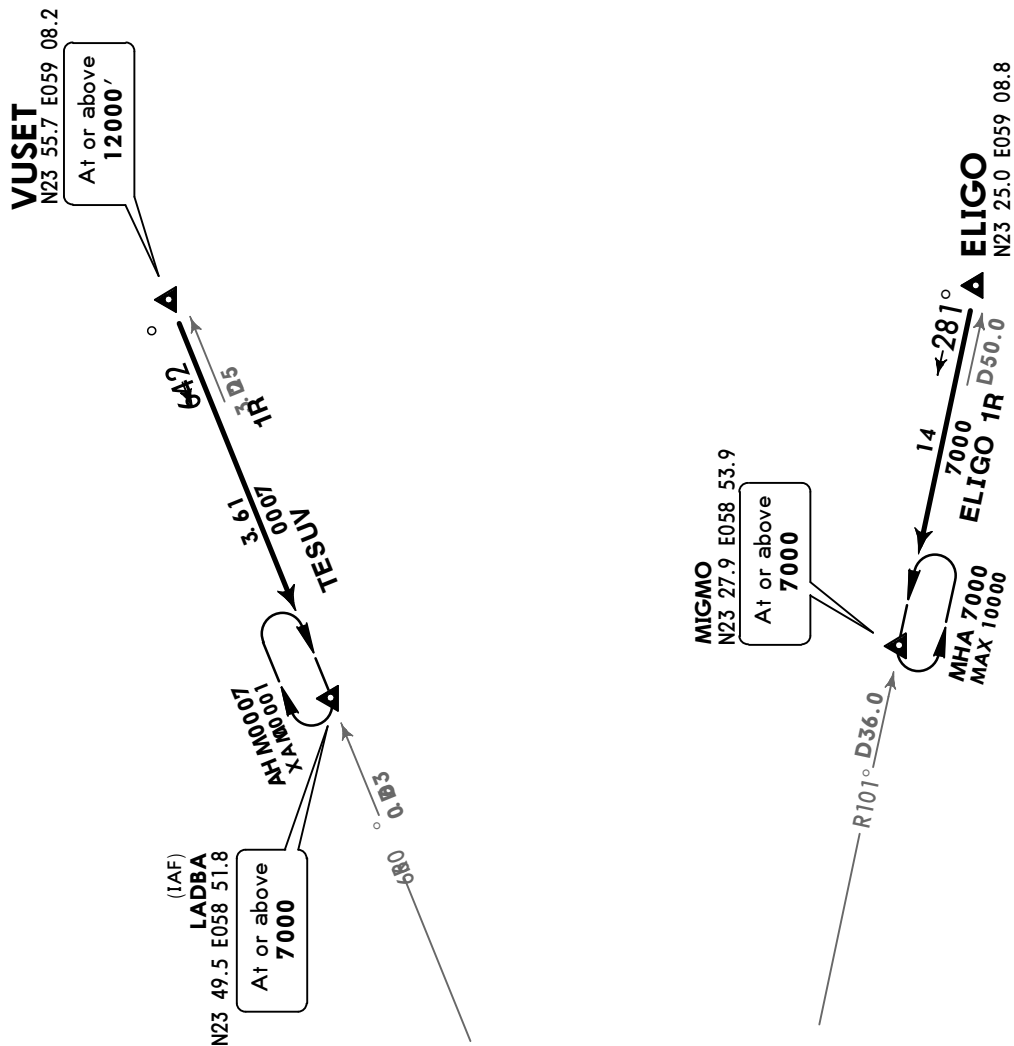
**JEPPESEN**  
21 AUG 15 **10-2**

**MUSCAT, OMAN**  
**STAR**

ATIS **126.8**      Apt Elev **49'**      Trans level: FL150      Trans alt: 13000'



**ELIGO 1R [ELIG1R]**  
**VUSET 1R [VUSE1R]**  
**RWY 26R ARRIVALS**



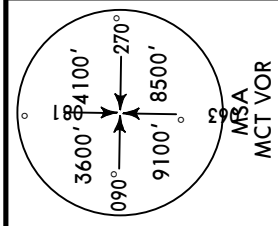
STAR	ROUTING
ELIGO 1R	Intercept MCT R-101 inbound to MIGMO.
VUSET 1R	Intercept MCT R-066 inbound to LADBA.

**OOMS/MCT**  
MUSCAT INTL

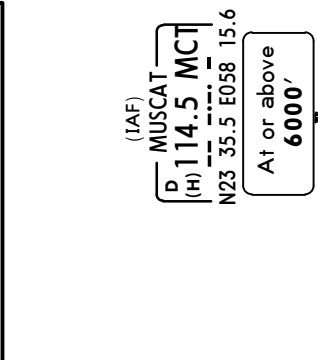
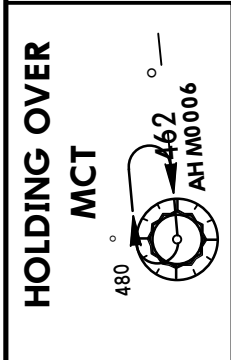
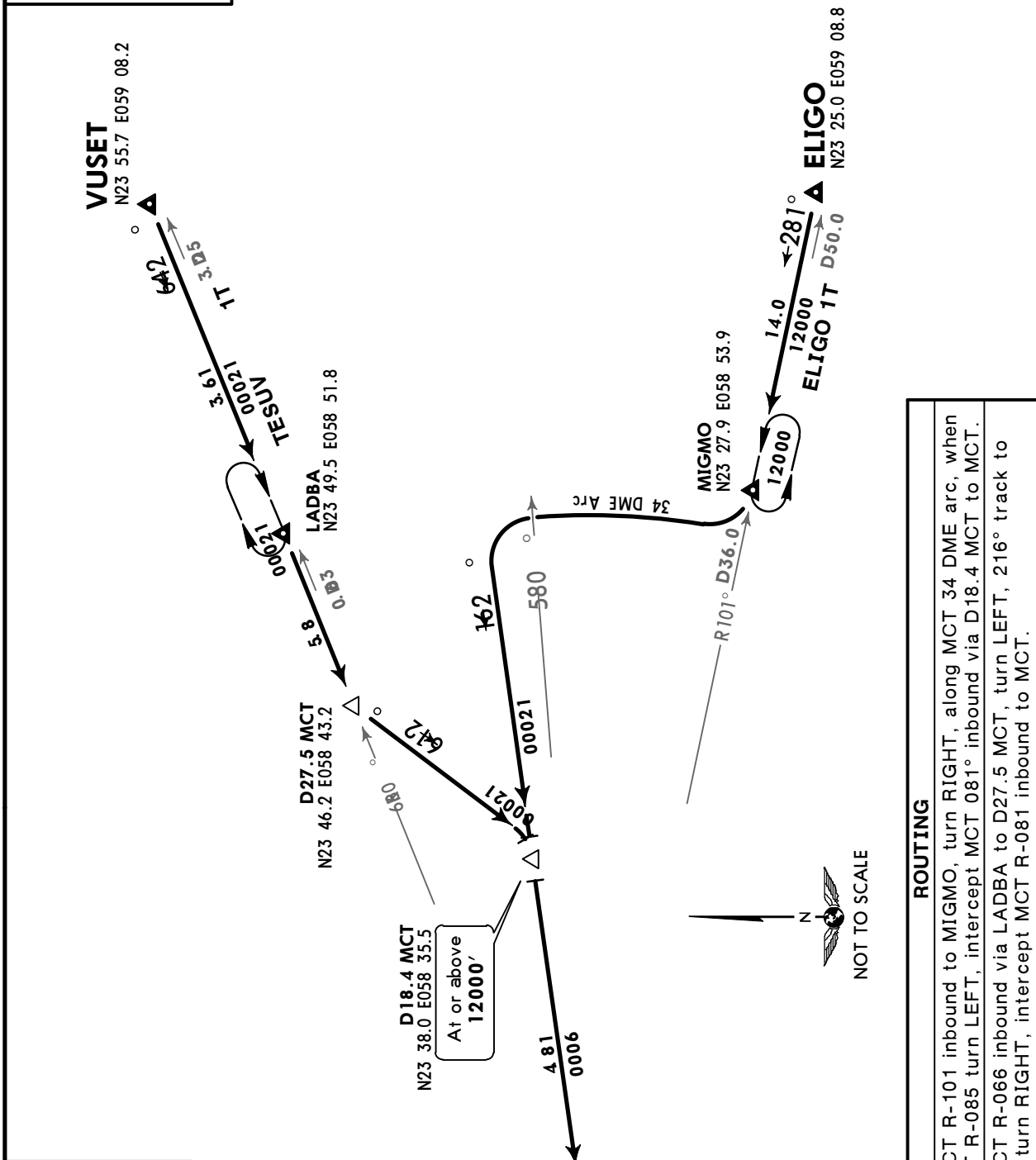
**JEPPESEN**  
21 AUG 15 **10-2A**

**MUSCAT, OMAN**  
**STAR**

ATIS <b>126.8</b>	Apt Elev <b>49'</b>	Trans level: FL150    Trans alt: 13000'
----------------------	------------------------	---



**ELIGO 1T [ELIG1T]**  
**VUSET 1T [VUSE1T]**  
**RWY 08L ARRIVALS**



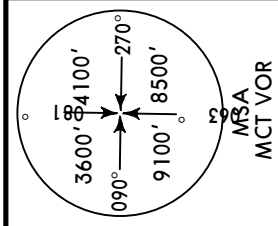
ROUTING	
<b>STAR</b>	
<b>ELIGO 1T</b>	Intercept MCT R-101 inbound to MIGMO, turn RIGHT, along MCT 34 DME arc, when passing MCT R-085 turn LEFT, intercept MCT 081° inbound via D18.4 MCT to MCT.
<b>VUSET 1T</b>	Intercept MCT R-066 inbound via LADBA to D27.5 MCT, turn LEFT, 216° track to D18.4 MCT, turn RIGHT, intercept MCT R-081 inbound to MCT.

# OOMS/MCT MUSCAT INTL

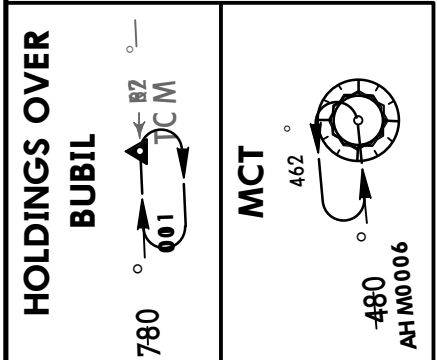
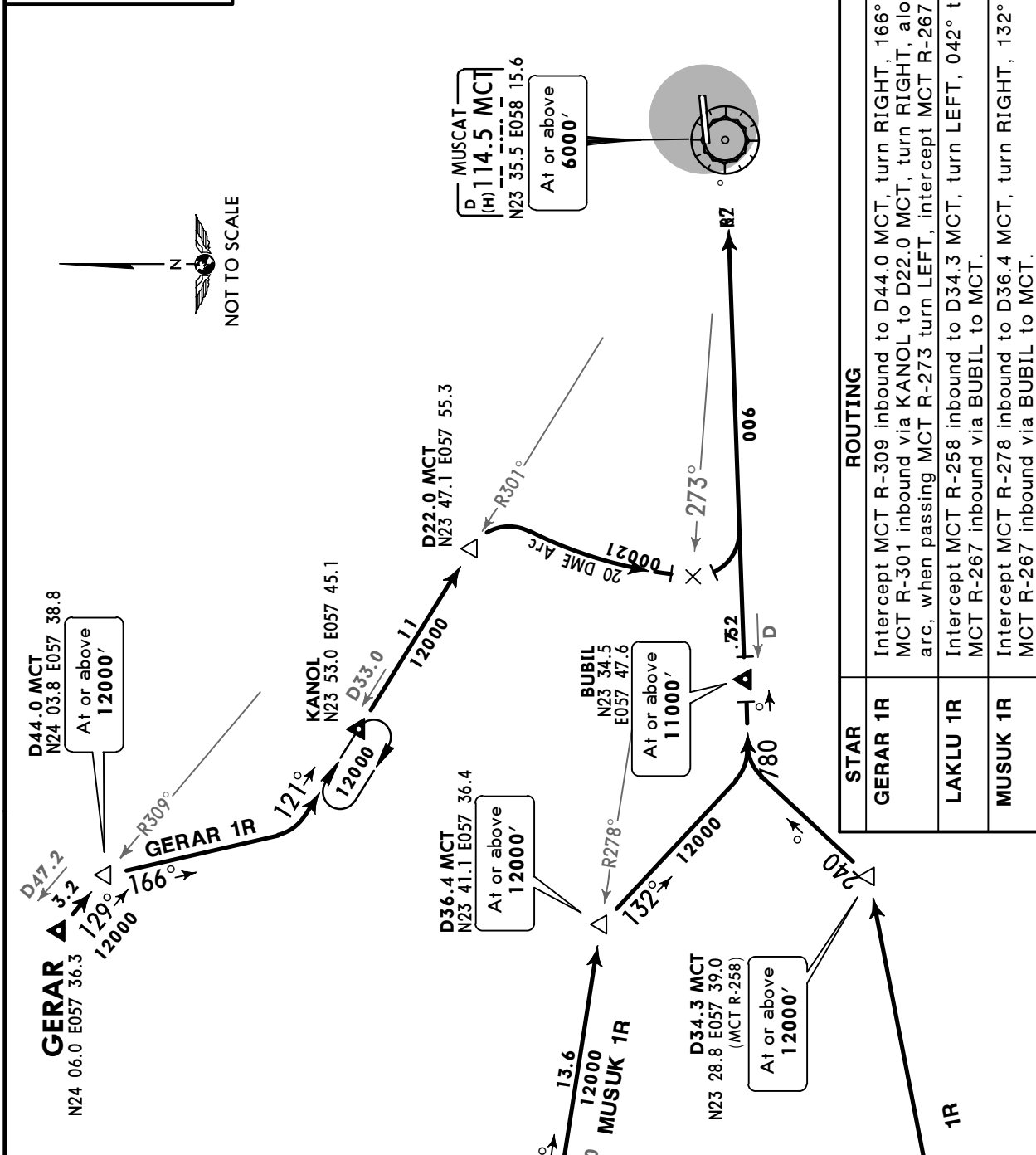
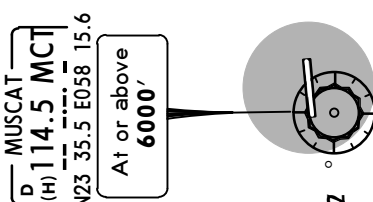
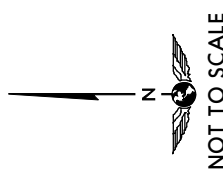
**JEPPESSEN**  
21 AUG 15 **10-2B**

**MUSCAT, OMAN**  
**STAR**

ATIS **126.8**      Apt Elev **49'**      Trans level: FL150      Trans alt: 13000'



**GERAR 1R [GERA1R]**  
**LAKLU 1R [LAKL1R]**  
**MUSUK 1R [MUSU1R]**  
**RWY 26R ARRIVALS**



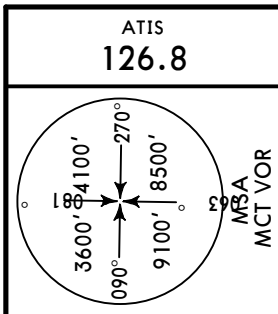
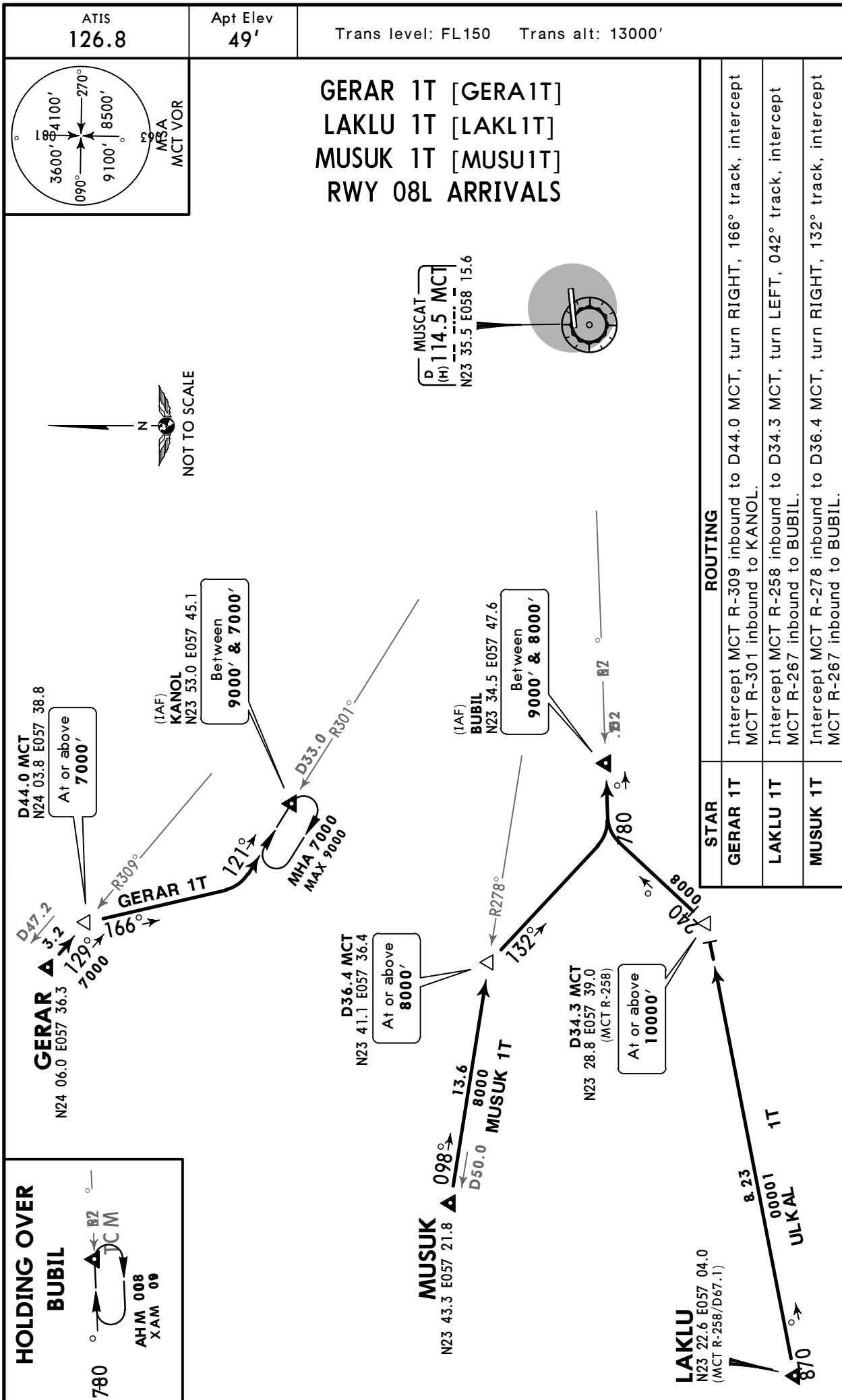
	<b>ROUTING</b>
<b>STAR</b>	Intercept MCT R-309 inbound to D44.0 MCT, turn RIGHT, 166° track, intercept MCT R-301 inbound via KANOL to D22.0 MCT, turn RIGHT, along MCT 20 DME arc, when passing MCT R-273 turn LEFT, intercept MCT R-267 inbound to MCT.
<b>GERAR 1R</b>	Intercept MCT R-309 inbound to D44.0 MCT, turn RIGHT, 166° track, intercept MCT R-301 inbound via KANOL to D22.0 MCT, turn RIGHT, along MCT 20 DME arc, when passing MCT R-273 turn LEFT, intercept MCT R-267 inbound to MCT.
<b>LAKLU 1R</b>	Intercept MCT R-258 inbound to D34.3 MCT, turn LEFT, 042° track, intercept MCT R-267 inbound via BUBIL to MCT.
<b>MUSUK 1R</b>	Intercept MCT R-278 inbound to D36.4 MCT, turn RIGHT, 132° track, intercept MCT R-267 inbound via BUBIL to MCT.

CHANGES: ATIS commissioned.

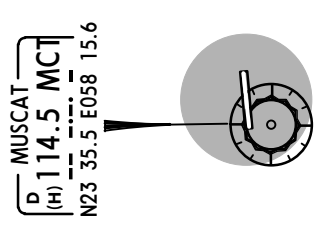
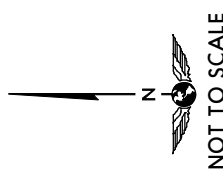
**OOMS/MCT**  
**MUSCAT INTL**

**JEPPESSEN**  
21 AUG 15 **10-2C**

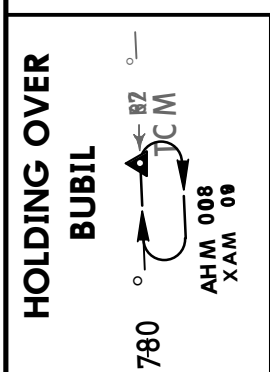
**MUSCAT, OMAN**  
**STAR**



**GERAR 1T [GERA1T]**  
**LAKLU 1T [LAKL1T]**  
**MUSUK 1T [MUSU1T]**  
**RWY 08L ARRIVALS**



STAR	ROUTING
GERAR 1T	Intercept MCT R-309 inbound to D44.0 MCT, turn RIGHT, 166° track, intercept MCT R-301 inbound to KANOL.
LAKLU 1T	Intercept MCT R-258 inbound to D34.3 MCT, turn LEFT, 042° track, intercept MCT R-267 inbound to BUBIL.
MUSUK 1T	Intercept MCT R-278 inbound to D36.4 MCT, turn RIGHT, 132° track, intercept MCT R-267 inbound to BUBIL.



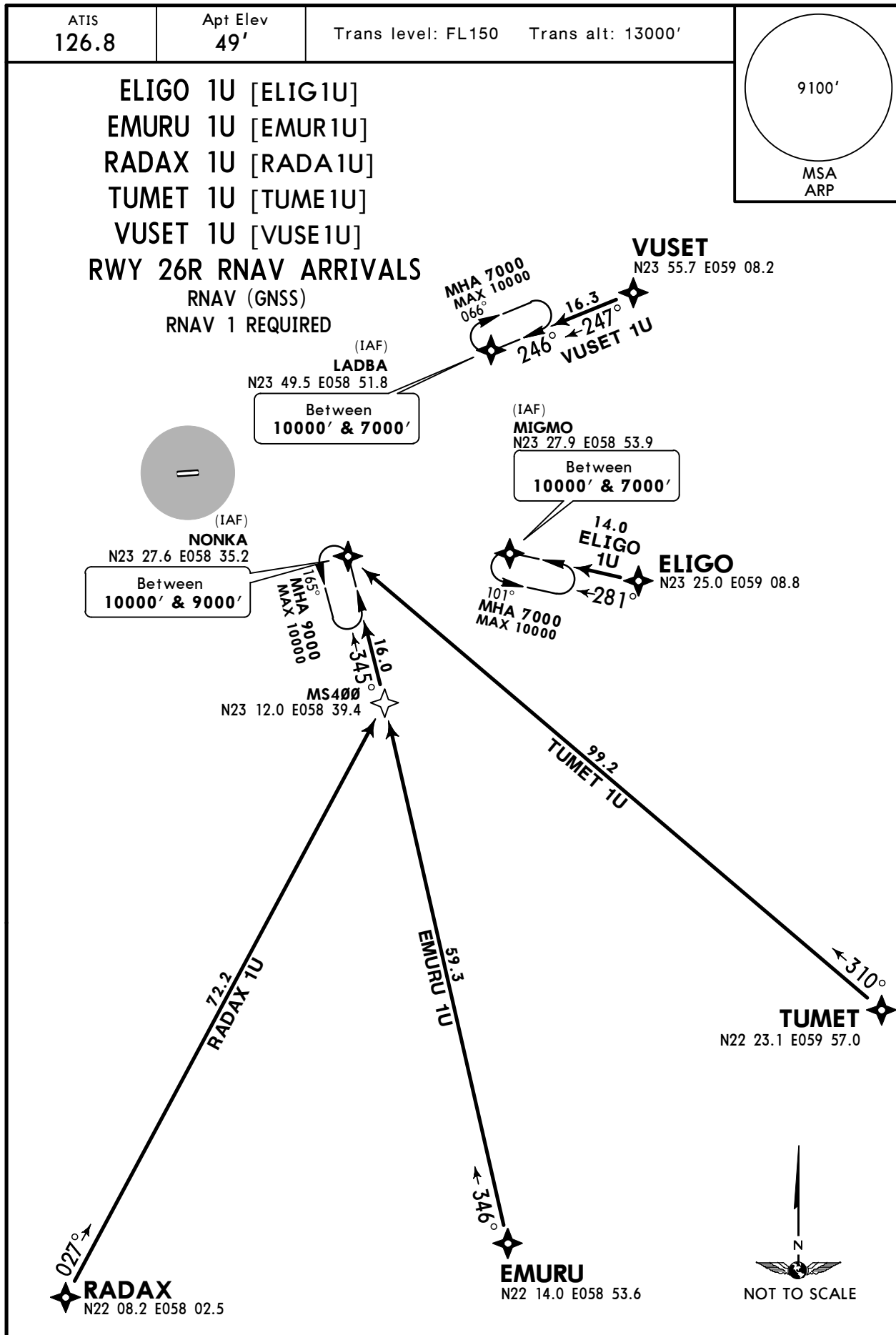
CHANGES: ATIS commissioned.



**OOMS/MCT**  
MUSCAT INTL

**JEPPESEN**  
21 AUG 15 **10-2D**

**MUSCAT, OMAN**  
**RNAV STAR**



STAR	ROUTING
<b>ELIGO 1U</b>	ELIGO - MIGMO (10000'-; 7000'+).
<b>EMURU 1U</b>	EMURU - MS400 - NONKA (10000'-; 9000'+).
<b>RADAX 1U</b>	RADAX - MS400 - NONKA (10000'-; 9000'+).
<b>TUMET 1U</b>	TUMET - NONKA (10000'-; 9000'+).
<b>VUSET 1U</b>	VUSET - LADBA (10000'-; 7000'+).

**OOMS/MCT**  
MUSCAT INTL

**JEPPESEN**

**MUSCAT, OMAN**

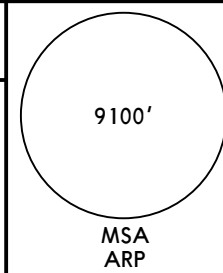
21 AUG 15 **10-2E**

**RNAV STAR**

ATIS  
**126.8**

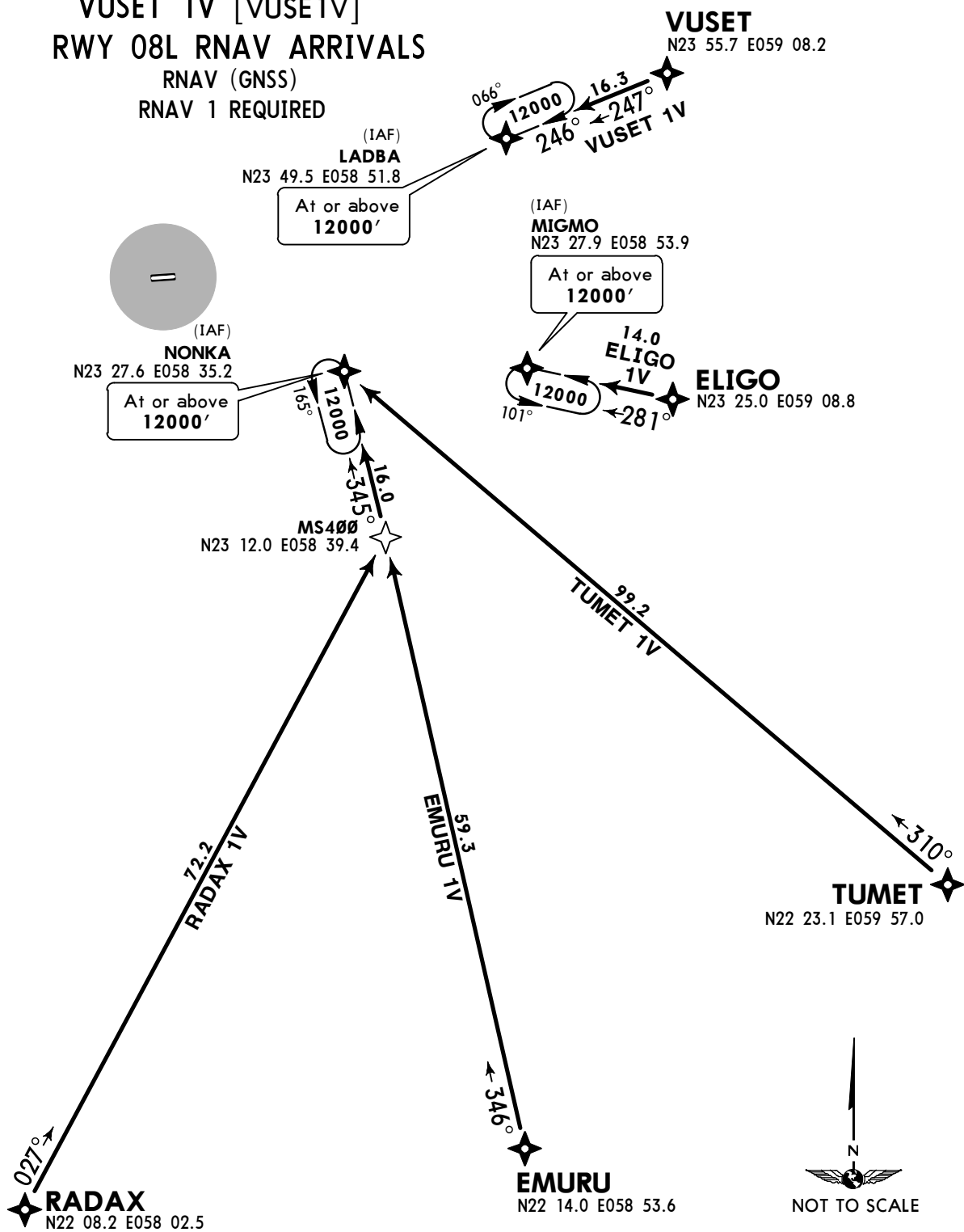
Apt Elev  
**49'**

Trans level: FL150 Trans alt: 13000'



**ELIGO 1V [ELIG1V]**  
**EMURU 1V [EMUR1V]**  
**RADAX 1V [RADA1V]**  
**TUMET 1V [TUME1V]**  
**VUSET 1V [VUSE1V]**  
**RWY 08L RNAV ARRIVALS**

RNAV (GNSS)  
RNAV 1 REQUIRED



STAR	ROUTING
<b>ELIGO 1V</b>	ELIGO - MIGMO (12000'+).
<b>EMURU 1V</b>	EMURU - MS400 - NONKA (12000'+).
<b>RADAX 1V</b>	RADAX - MS400 - NONKA (12000'+).
<b>TUMET 1V</b>	TUMET - NONKA (12000'+).
<b>VUSET 1V</b>	VUSET - LADBA (12000'+).

OOMS/MCT  
MUSCAT INTL

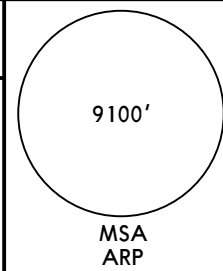
**JEPPESEN**  
21 AUG 15 (10-2F)

**MUSCAT, OMAN**  
**RNAV STAR**

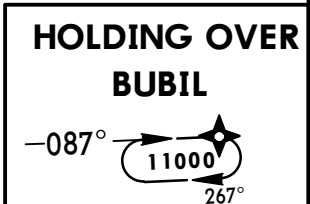
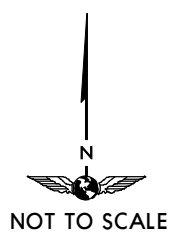
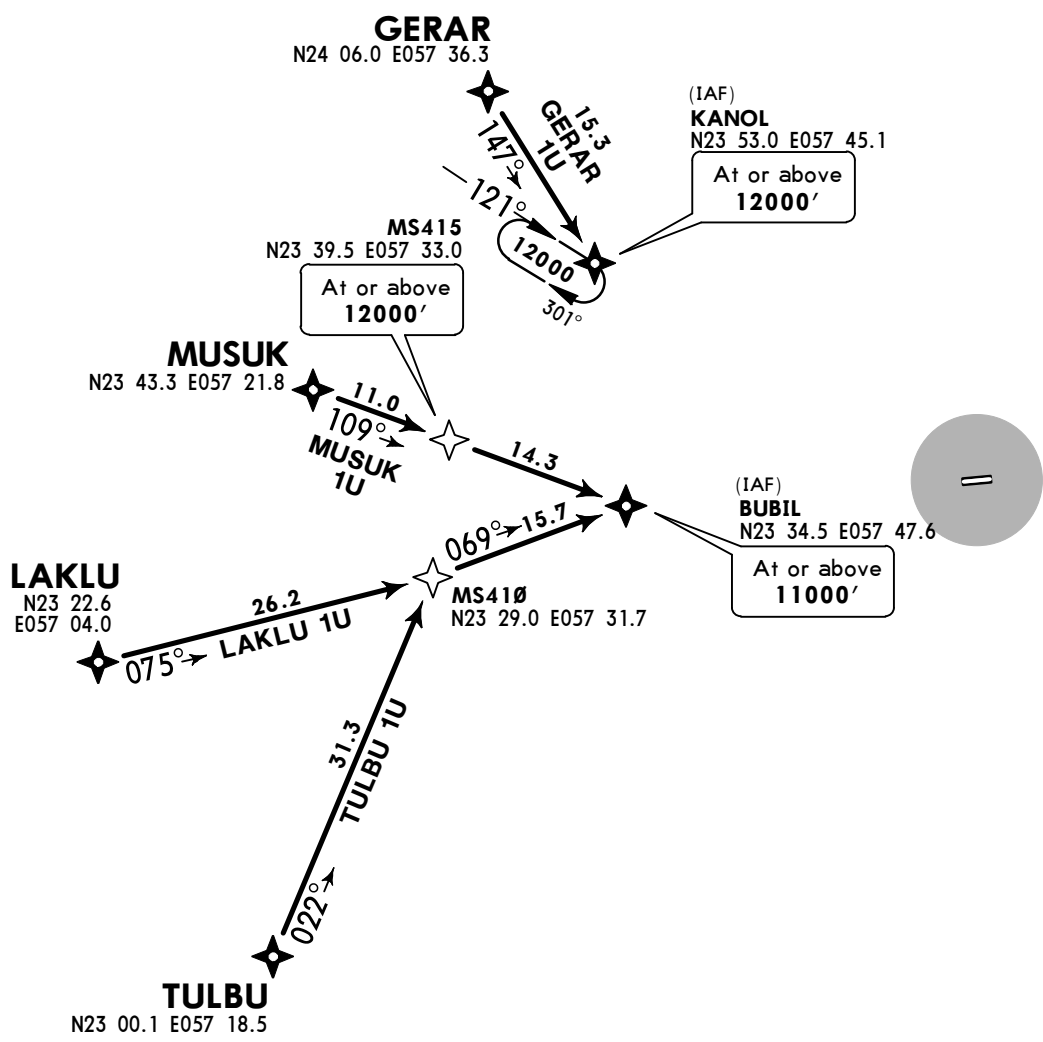
ATIS  
126.8

Apt Elev  
49'

Trans level: FL150 Trans alt: 13000'



GERAR 1U [GERA1U]  
LAKLU 1U [LAKL1U]  
MUSUK 1U [MUSU1U]  
TULBU 1U [TULB1U]  
**RWY 26R RNAV ARRIVALS**  
RNAV (GNSS)  
RNAV 1 REQUIRED



STAR	ROUTING
GERAR 1U	GERAR - KANOL (12000'+).
LAKLU 1U	LAKLU - MS410 - BUBIL (11000'+).
MUSUK 1U	MUSUK - MS415 (12000'+) - BUBIL (11000'+).
TULBU 1U	TULBU - MS410 - BUBIL (11000'+).

CHANGES: ATIS commissioned.

OOMS/MCT  
MUSCAT INTL

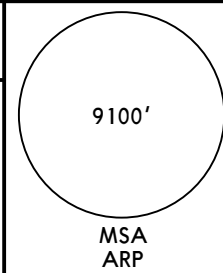
**JEPPesen**  
21 AUG 15 (10-2G)

**MUSCAT, OMAN**  
**RNAV STAR**

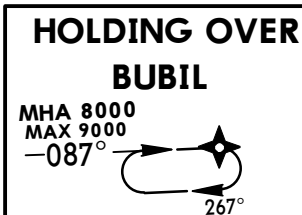
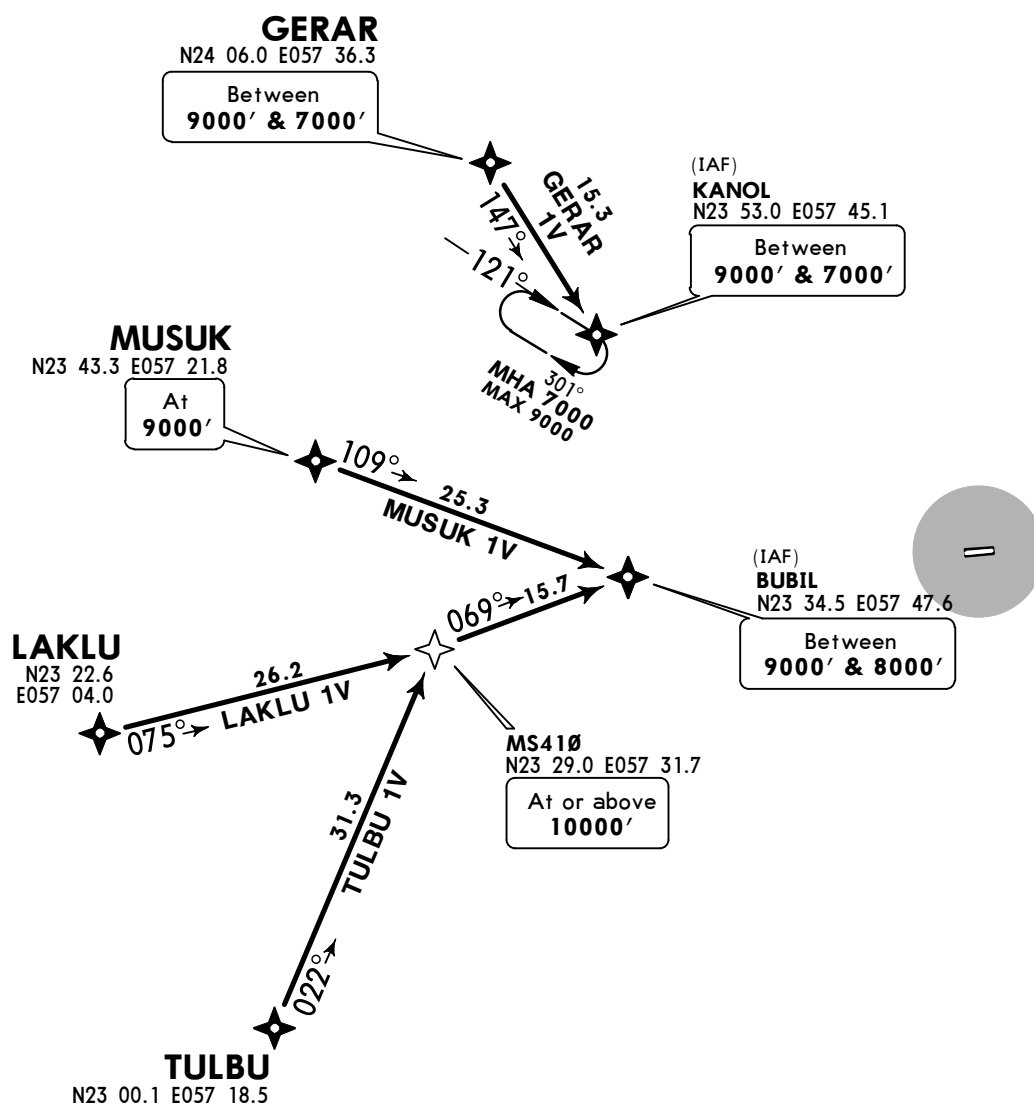
ATIS  
126.8

Apt Elev  
49'

Trans level: FL150 Trans alt: 13000'



GERAR 1V [GERA1V]  
LAKLU 1V [LAKL1V]  
MUSUK 1V [MUSU1V]  
TULBU 1V [TULB1V]  
RWY 08L RNAV ARRIVALS  
RNAV (GNSS)  
RNAV 1 REQUIRED



STAR	ROUTING
GERAR 1V	GERAR (9000'-; 7000'+) - KANOL (9000'-; 7000'+).
LAKLU 1V	LAKLU - MS410 (10000'+) - BUBIL (9000'-; 8000'+).
MUSUK 1V	MUSUK (9000') - BUBIL (9000'-; 8000'+).
TULBU 1V	TULBU - MS410 (10000'+) - BUBIL (9000'-; 8000'+).

CHANGES: ATIS commissioned.

**OOMS/MCT**  
MUSCAT INTL

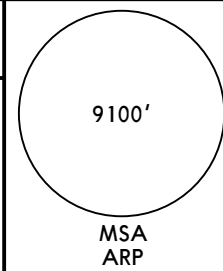
**JEPPESSEN**  
21 AUG 15 **10-2H**

**MUSCAT, OMAN**  
**RNAV TRANSITION**

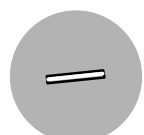
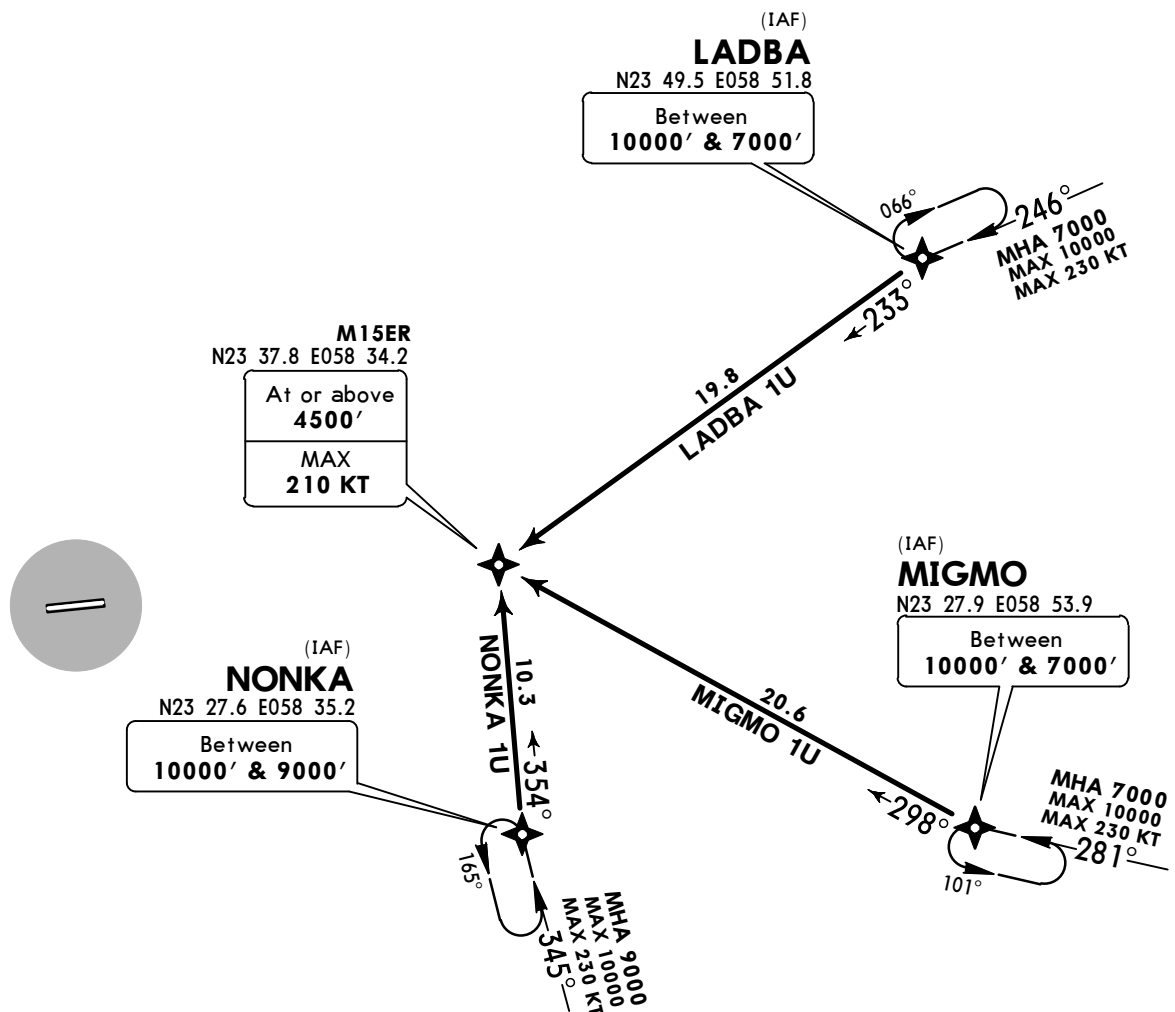
ATIS  
**126.8**

Apt Elev  
**49'**

Trans level: FL150 Trans alt: 13000'



**LADBA 1U [LAD1U]**  
**MIGMO 1U [MIG1U]**  
**NONKA 1U [NON1U]**  
**RWY 26R RNAV TRANSITIONS**  
RNAV (GNSS)  
RNAV 1 REQUIRED



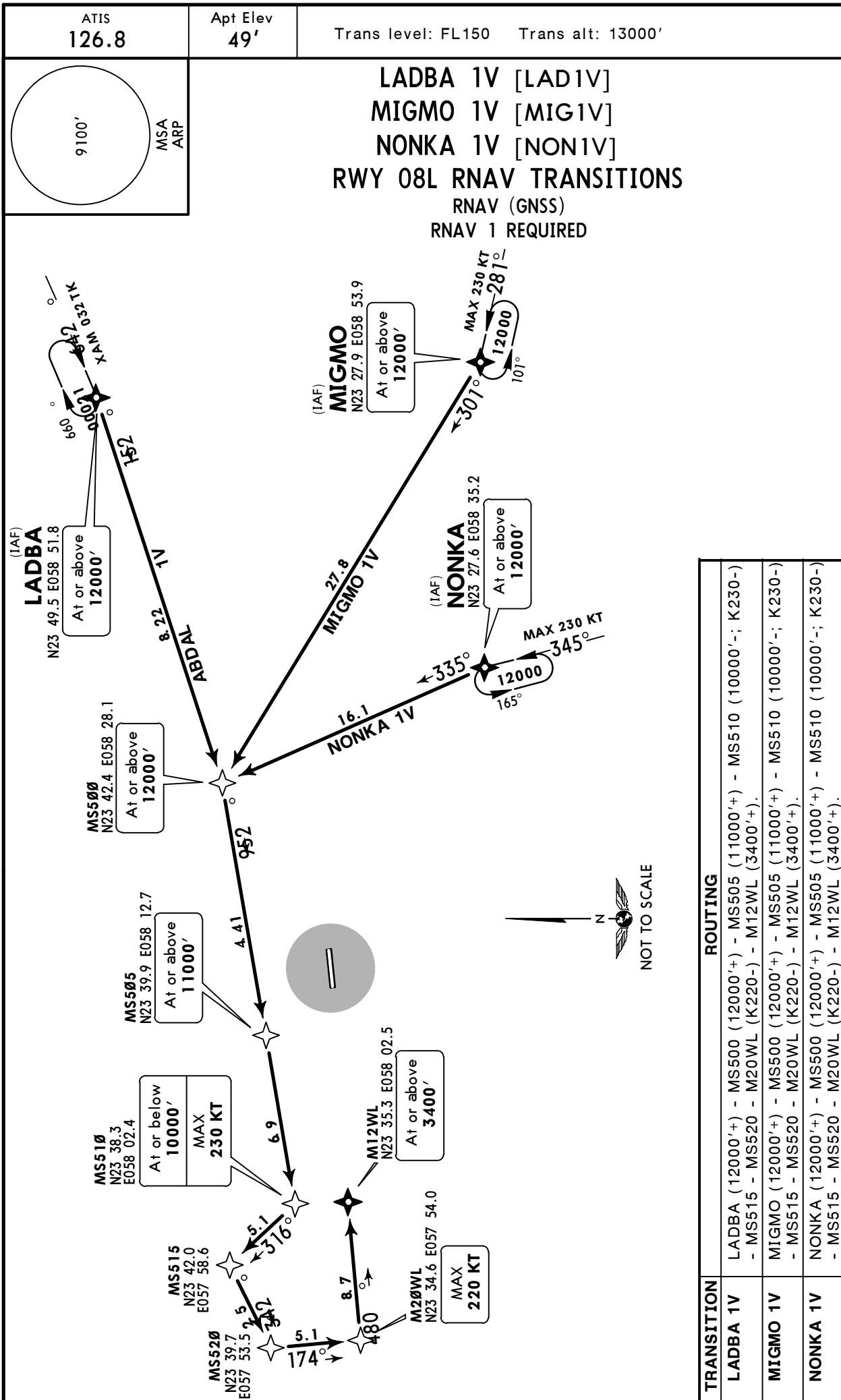
TRANSITION	ROUTING
<b>LADBA 1U</b>	LADBA (10000'-; 7000'+) - M15ER (4500'+; K210-).
<b>MIGMO 1U</b>	MIGMO (10000'-; 7000'+) - M15ER (4500'+; K210-).
<b>NONKA 1U</b>	NONKA (10000'-; 9000'+) - M15ER (4500'+; K210-).

CHANGES: ATIS commissioned.

**OOMS/MCT**  
**MUSCAT INTL**

**JEPPESEN**  
21 AUG 15 **10-2J**

**MUSCAT, OMAN**  
**RNAV TRANSITION**



CHANGES: ATIS commissioned.

**OOMS/MCT**  
MUSCAT INTL

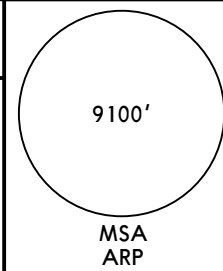
**JEPPESEN**  
21 AUG 15 **10-2K**

**MUSCAT, OMAN**  
**RNAV TRANSITION**

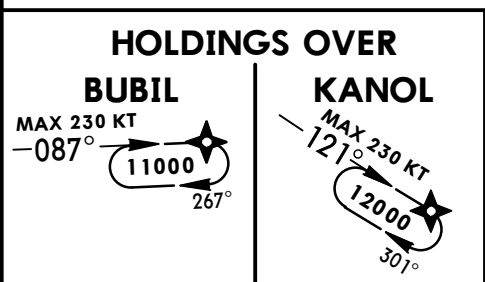
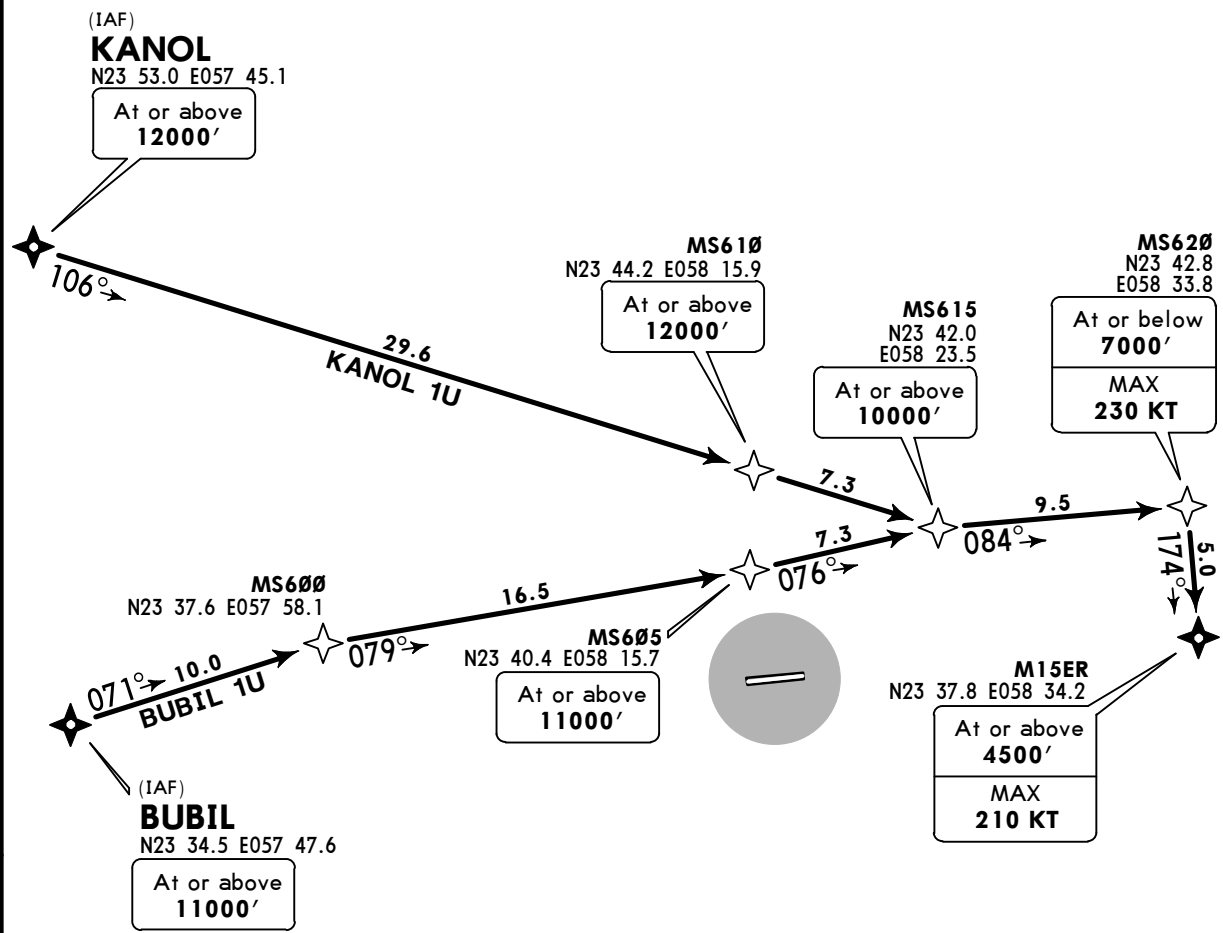
ATIS  
**126.8**

Apt Elev  
**49'**

Trans level: FL150 Trans alt: 13000'



**BUBIL 1U [BUB1U]**  
**KANOL 1U [KAN1U]**  
**RWY 26R RNAV TRANSITIONS**  
RNAV (GNSS)  
RNAV 1 REQUIRED



TRANSITION	ROUTING
<b>BUBIL 1U</b>	BUBIL (11000'+) - MS600 - MS605 (11000'+) - MS615 (10000'+) - MS620 (7000'-; K230-) - M15ER (4500'+; K210-).
<b>KANOL 1U</b>	KANOL (12000'+) - MS610 (12000'+) - MS615 (10000'+) - MS620 (7000'-; K230-) - M15ER (4500'+; K210-).

OOMS/MCT  
MUSCAT INTL

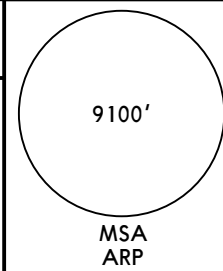
**JEPPESEN**  
21 AUG 15 (10-2L)

**MUSCAT, OMAN**  
**RNAV TRANSITION**

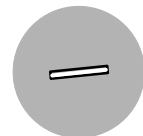
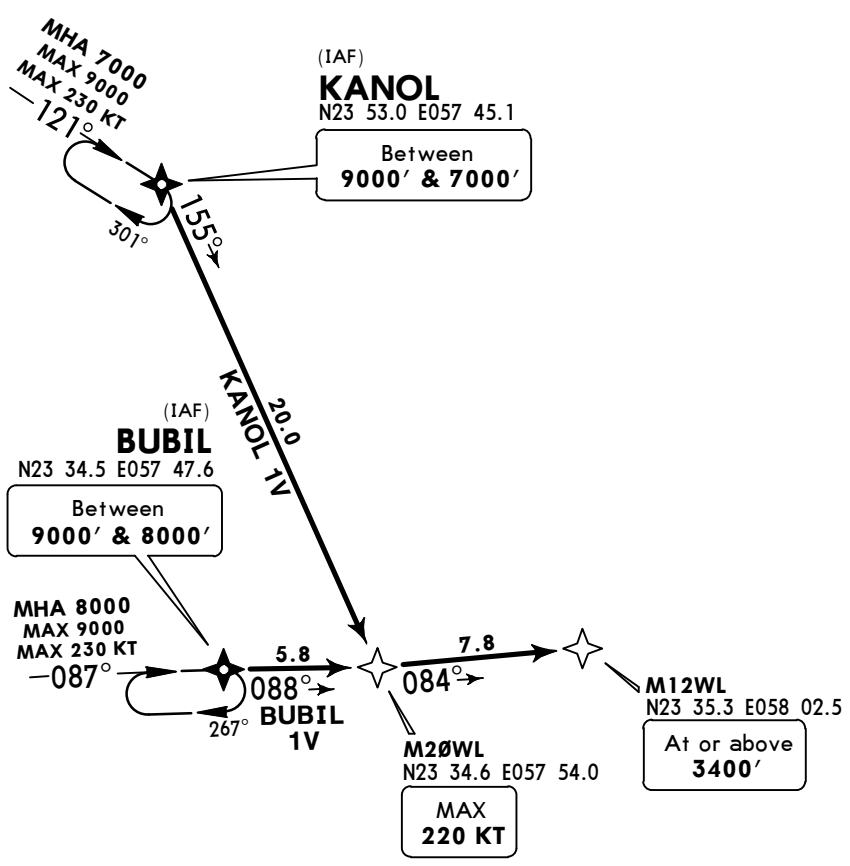
ATIS  
126.8

Apt Elev  
49'

Trans level: FL150 Trans alt: 13000'



**BUBIL 1V [BUB1V]**  
**KANOL 1V [KAN1V]**  
**RWY 08L RNAV TRANSITIONS**  
RNAV (GNSS)  
RNAV 1 REQUIRED



TRANSITION	ROUTING
<b>BUBIL 1V</b>	BUBIL (9000'-; 8000'+) - M20WL (K220-) - M12WL (3400'+).
<b>KANOL 1V</b>	KANOL (9000'-; 7000'+) - M20WL (K220-) - M12WL (3400'+).

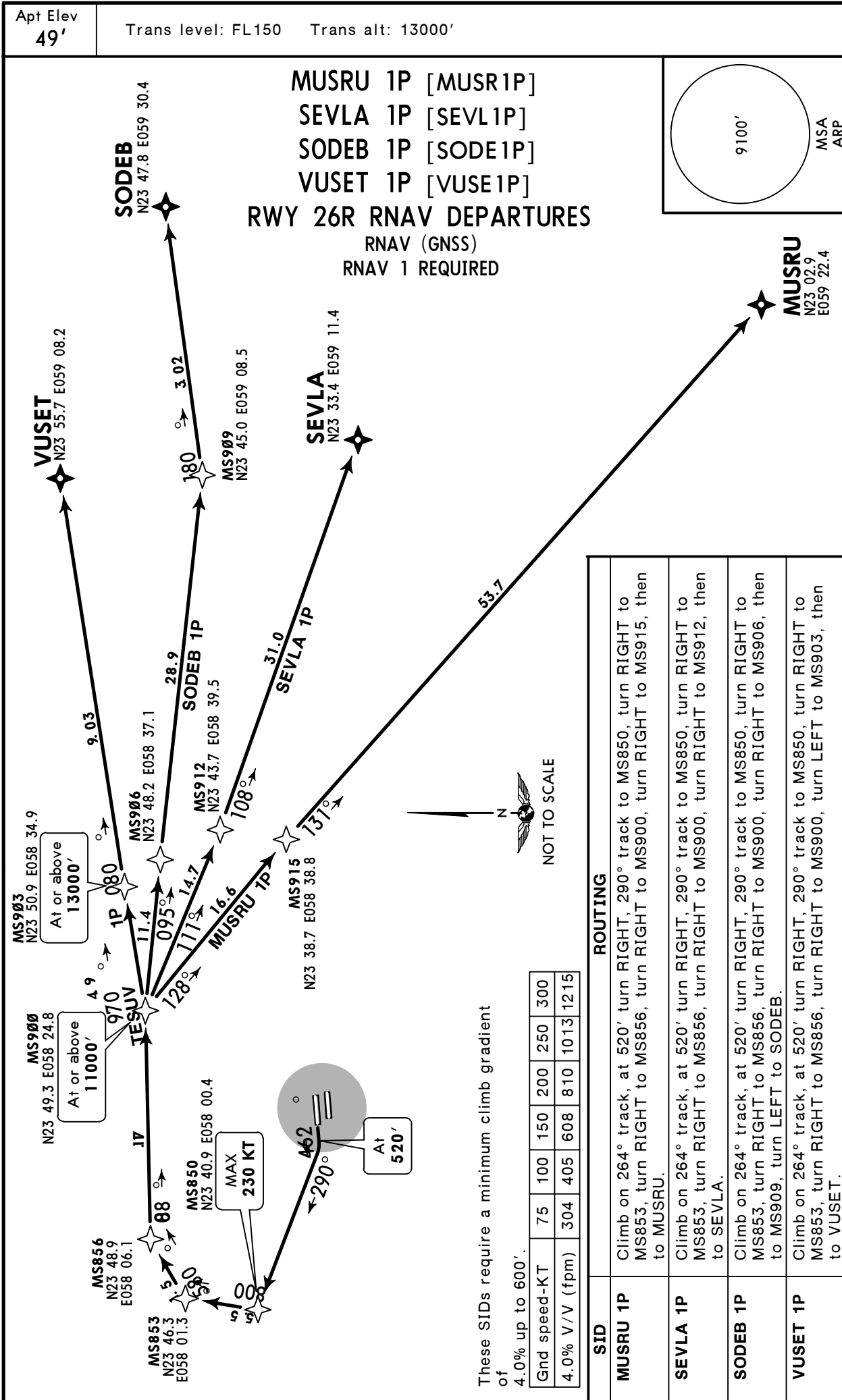
CHANGES: ATIS commissioned.



OOMS/MCT  
MUSCAT INTL

JEPPESEN  
10 JUL 15 10-3

MUSCAT, OMAN  
RNAV SID

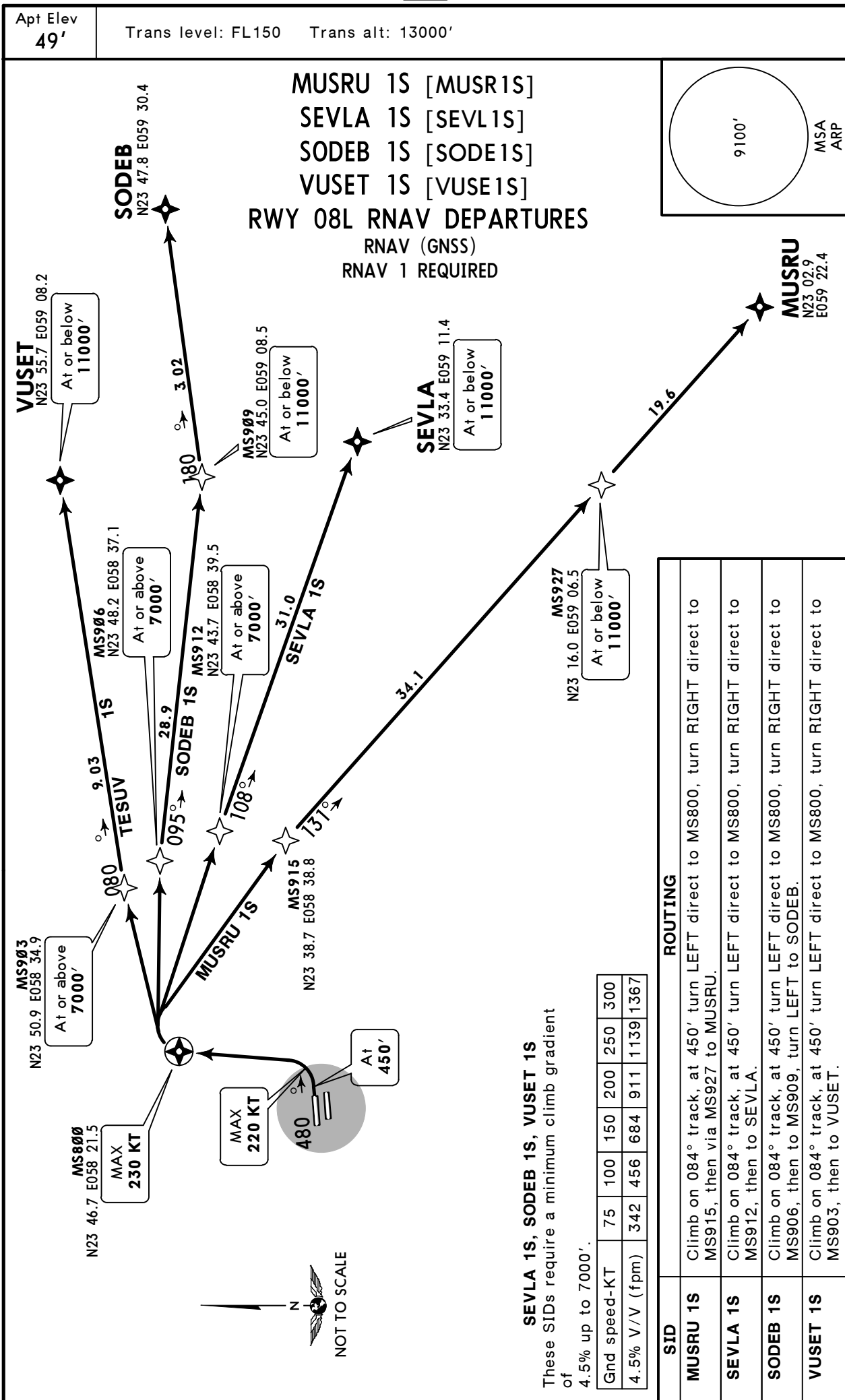


CHANGES: SIDs withdrawn; RNAV SIDs established.

OOMS/MCT  
MUSCAT INTL

JEPPESEN  
10 JUL 15 (10-3A)

MUSCAT, OMAN  
RNAV SID

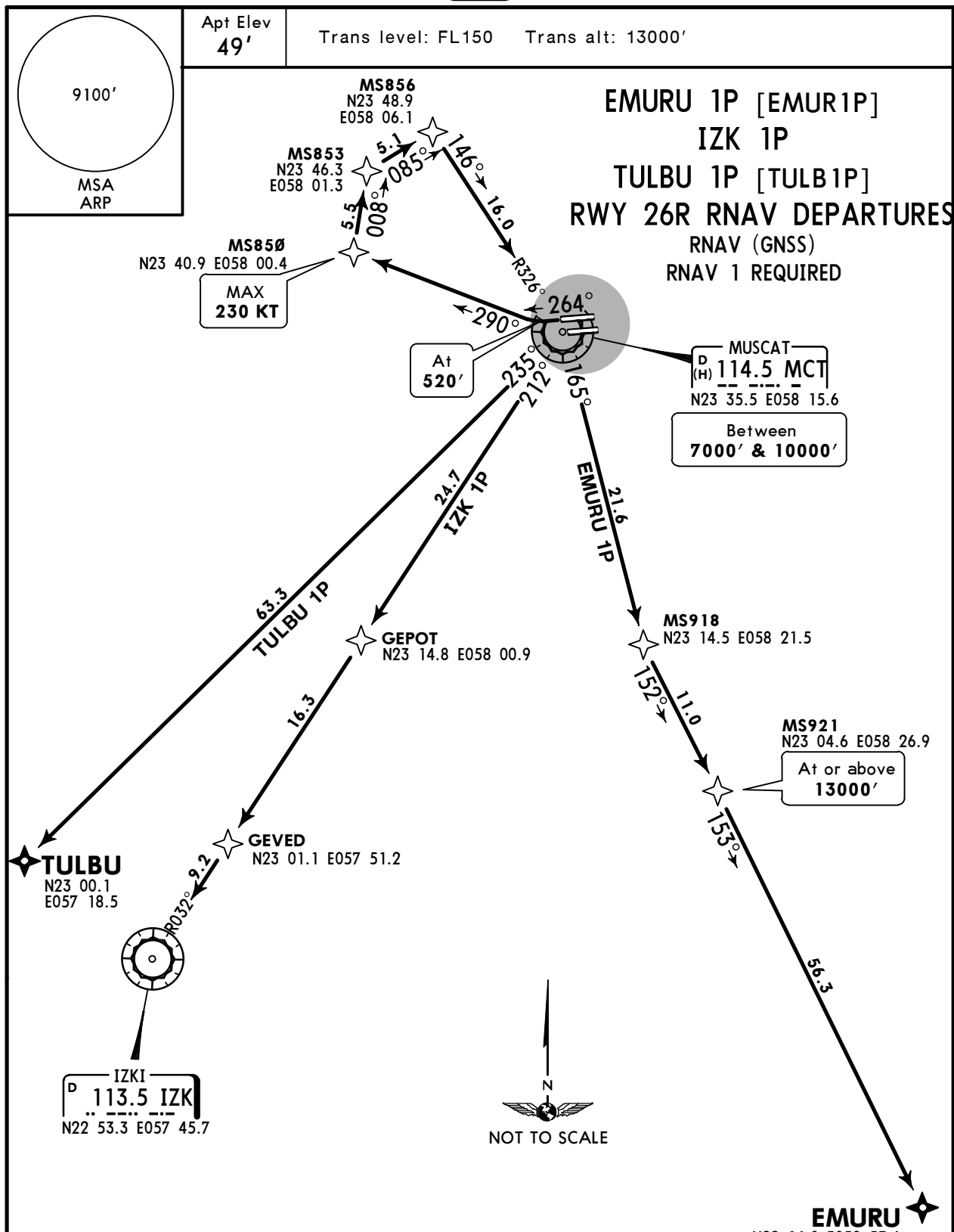


CHANGES: SIDs withdrawn; RNAV SIDs established.

**OOMS/MCT**  
MUSCAT INTL

**JEPPESEN**  
10 JUL 15 (10-3B)

**MUSCAT, OMAN**  
RNAV SID



These SIDs require a minimum climb gradient of 4.0% up to 600'.

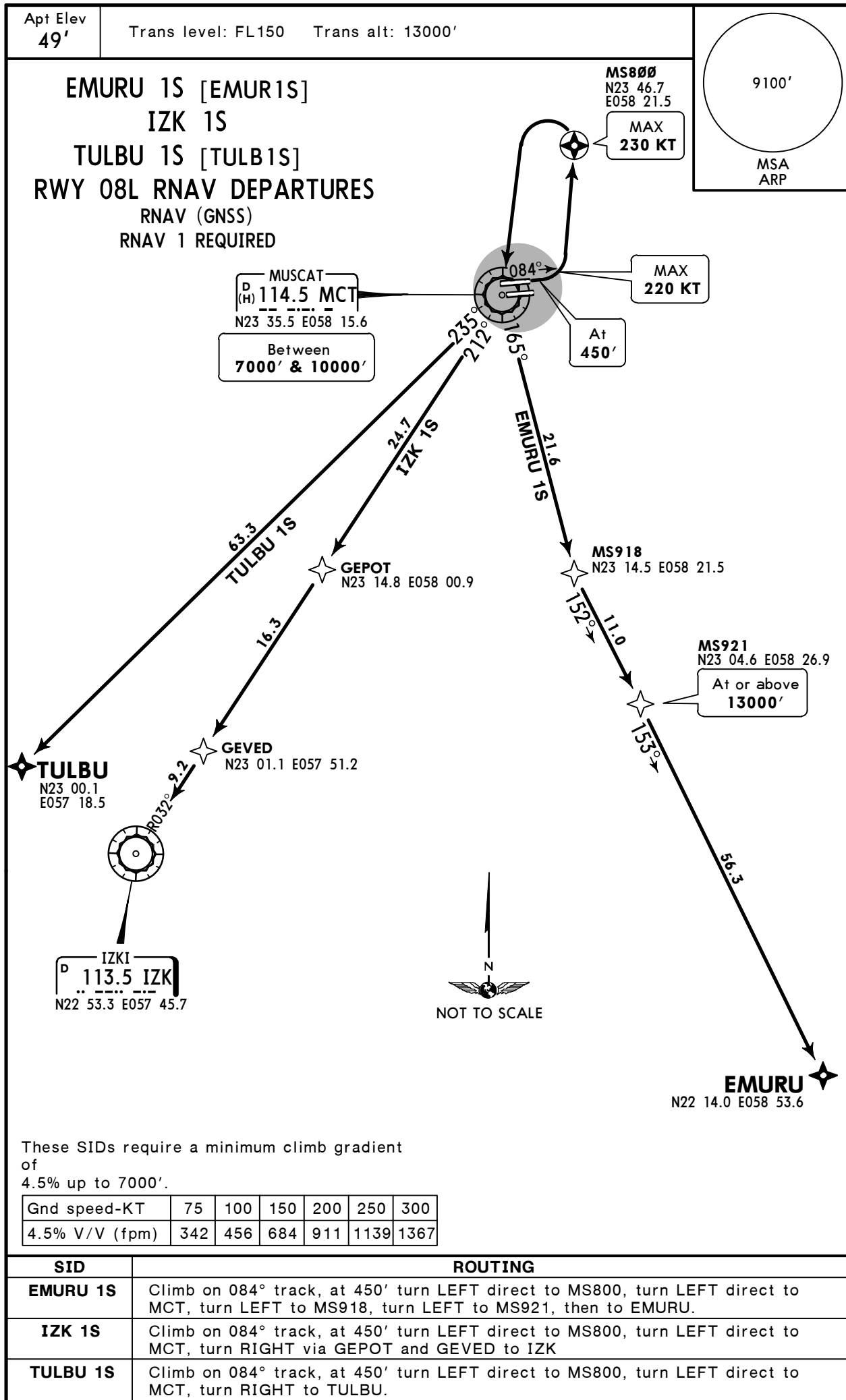
Gnd speed-KT	75	100	150	200	250	300
4.0% V/V (fpm)	304	405	608	810	1013	1215

SID	ROUTING
<b>EMURU 1P</b>	Climb on 264° track, at 520' turn RIGHT, 290° track to MS850, turn RIGHT to MS853, turn RIGHT to MS856, turn RIGHT to MCT, turn RIGHT to MS918, turn LEFT to MS921, then to EMURU.
<b>IZK 1P</b>	Climb on 264° track, at 520' turn RIGHT, 290° track to MS850, turn RIGHT to MS853, turn RIGHT to MS856, turn RIGHT to MCT, turn RIGHT via GEPOT and GEVED to IZK
<b>TULBU 1P</b>	Climb on 264° track, at 520' turn RIGHT, 290° track to MS850, turn RIGHT to MS853, turn RIGHT to MS856, turn RIGHT to MCT, turn RIGHT to TULBU.

**OOMS/MCT**  
**MUSCAT INTL**

**JEPPESSEN**  
10 JUL 15 **(10-3C)**

**MUSCAT, OMAN**  
**RNAV SID**



These SIDs require a minimum climb gradient of 4.5% up to 7000'.

Gnd speed-KT	75	100	150	200	250	300
4.5% V/V (fpm)	342	456	684	911	1139	1367

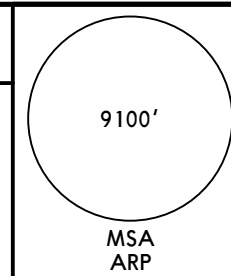
SID	ROUTING
<b>EMURU 1S</b>	Climb on 084° track, at 450' turn LEFT direct to MS800, turn LEFT direct to MCT, turn LEFT to MS918, turn LEFT to MS921, then to EMURU.
<b>IZK 1S</b>	Climb on 084° track, at 450' turn LEFT direct to MS800, turn LEFT direct to MCT, turn RIGHT via GEPOT and GEVED to IZK
<b>TULBU 1S</b>	Climb on 084° track, at 450' turn LEFT direct to MS800, turn LEFT direct to MCT, turn RIGHT to TULBU.

**OOMS/MCT**  
MUSCAT INTL

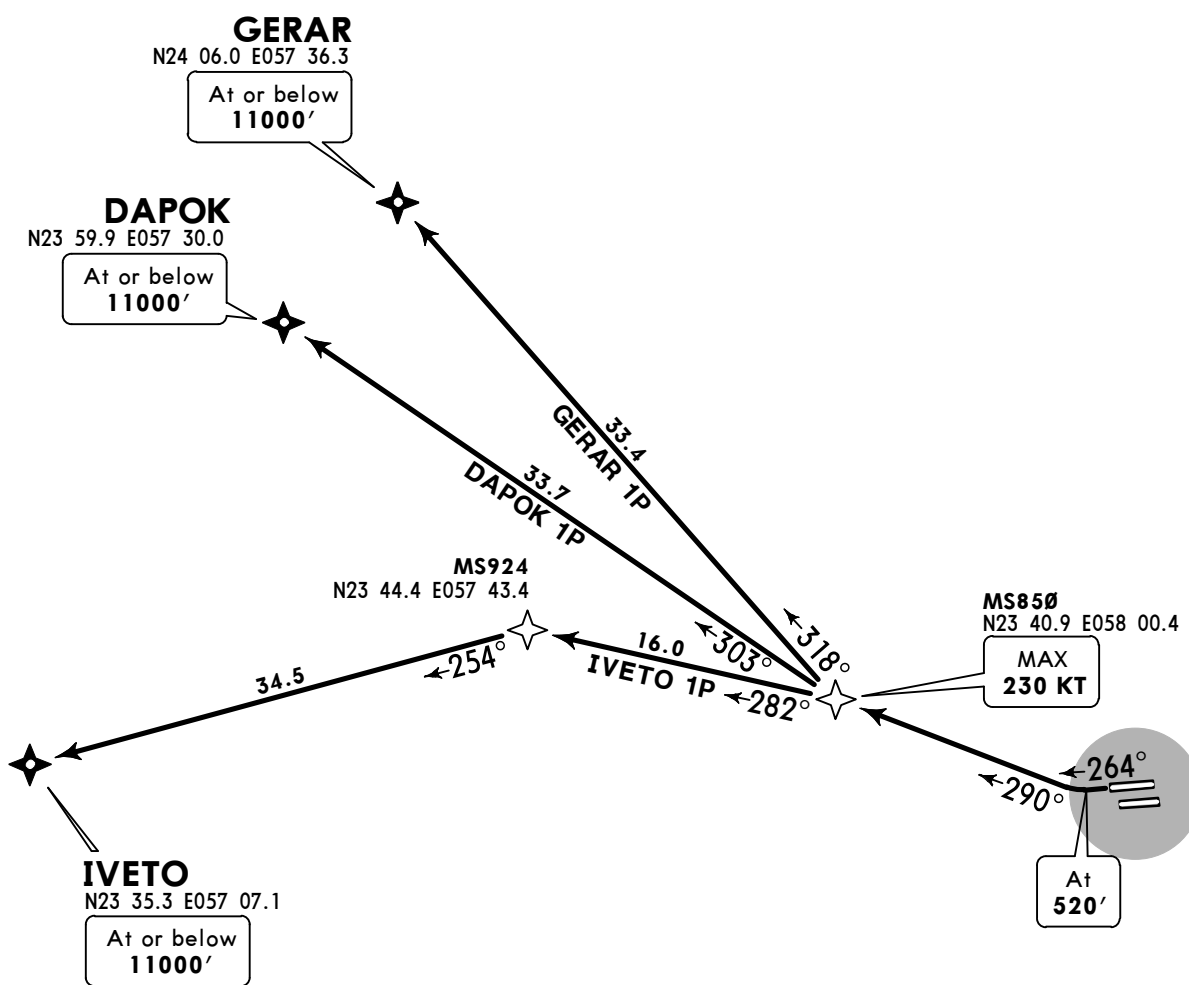
**JEPPESEN**  
10 JUL 15 (10-3D)

**MUSCAT, OMAN**  
**RNAV SID**

Apt Elev 49' Trans level: FL150 Trans alt: 13000'



**DAPOK 1P [DAPO1P]**  
**GERAR 1P [GERA1P]**  
**IVETO 1P [IVET1P]**  
**RWY 26R RNAV DEPARTURES**  
RNAV (GNSS)  
RNAV 1 REQUIRED



These SIDs require a minimum climb gradient of 4.0% up to 600'.

Gnd speed-KT	75	100	150	200	250	300
4.0% V/V (fpm)	304	405	608	810	1013	1215



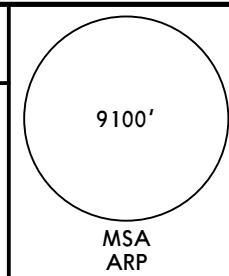
SID	ROUTING
<b>DAPOK 1P</b>	Climb on 264° track, at 520' turn RIGHT, 290° track to MS850, turn RIGHT to DAPOK.
<b>GERAR 1P</b>	Climb on 264° track, at 520' turn RIGHT, 290° track to MS850, turn RIGHT to GERAR.
<b>IVETO 1P</b>	Climb on 264° track, at 520' turn RIGHT, 290° track to MS850, turn LEFT to MS924, turn LEFT to IVETO

OOMS/MCT  
MUSCAT INTL

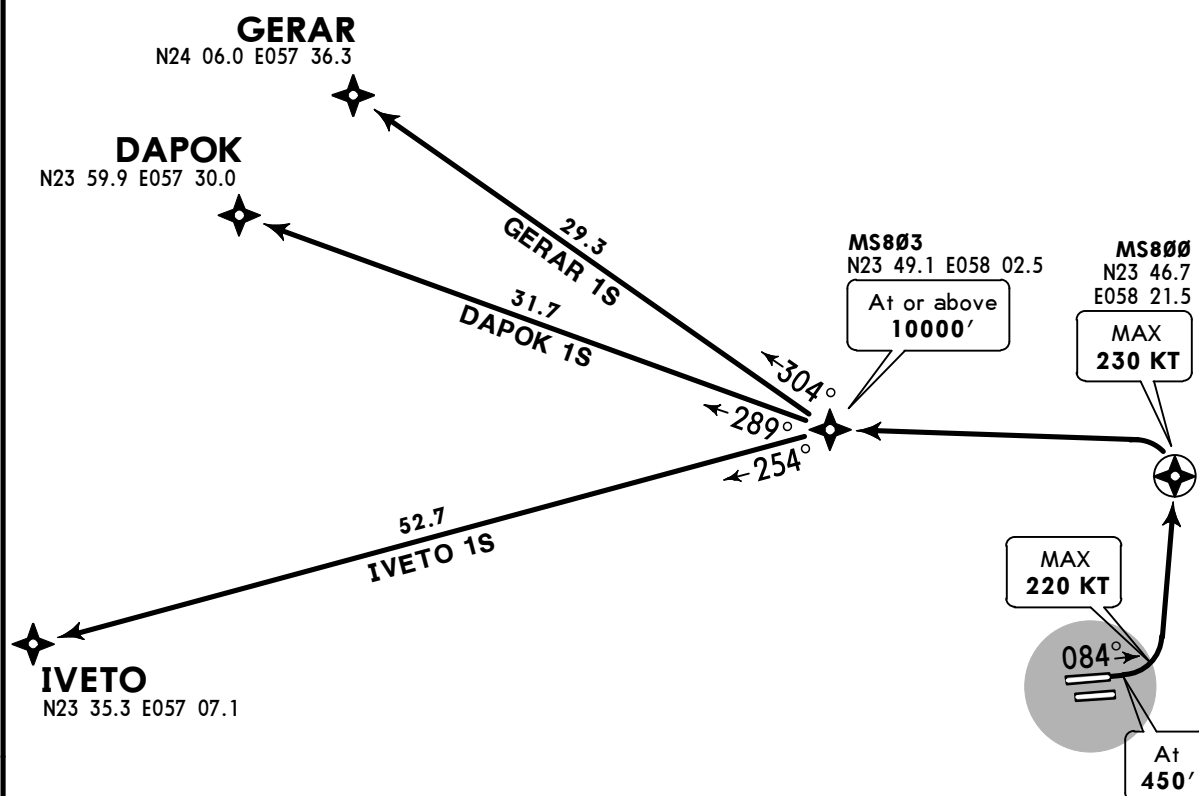
JEPPESEN  
10 JUL 15 (10-3E)

MUSCAT, OMAN  
RNAV SID

Apt Elev 49' Trans level: FL150 Trans alt: 13000'



DAPOK 1S [DAPO1S]  
GERAR 1S [GERA1S]  
IVETO 1S [IVET1S]  
RWY 08L RNAV DEPARTURES  
RNAV (GNSS)  
RNAV 1 REQUIRED



These SIDs require a minimum climb gradient of 5.5% up to 10000'.

Gnd speed-KT	75	100	150	200	250	300
5.5% V/V (fpm)	418	557	835	1114	1392	1671



SID	ROUTING
DAPOK 1S	Climb on 084° track, at 450' turn LEFT direct to MS800, turn LEFT direct to MS803, turn RIGHT to DAPOK.
GERAR 1S	Climb on 084° track, at 450' turn LEFT direct to MS800, turn LEFT direct to MS803, turn RIGHT to GERAR.
IVETO 1S	Climb on 084° track, at 450' turn LEFT direct to MS800, turn LEFT direct to MS803, turn LEFT to IVETO



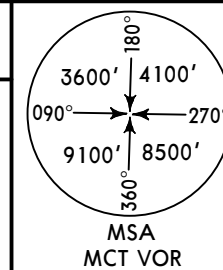
OOMS/MCT  
MUSCAT INTL

JEPPESEN  
10 JUL 15 (10-3G)

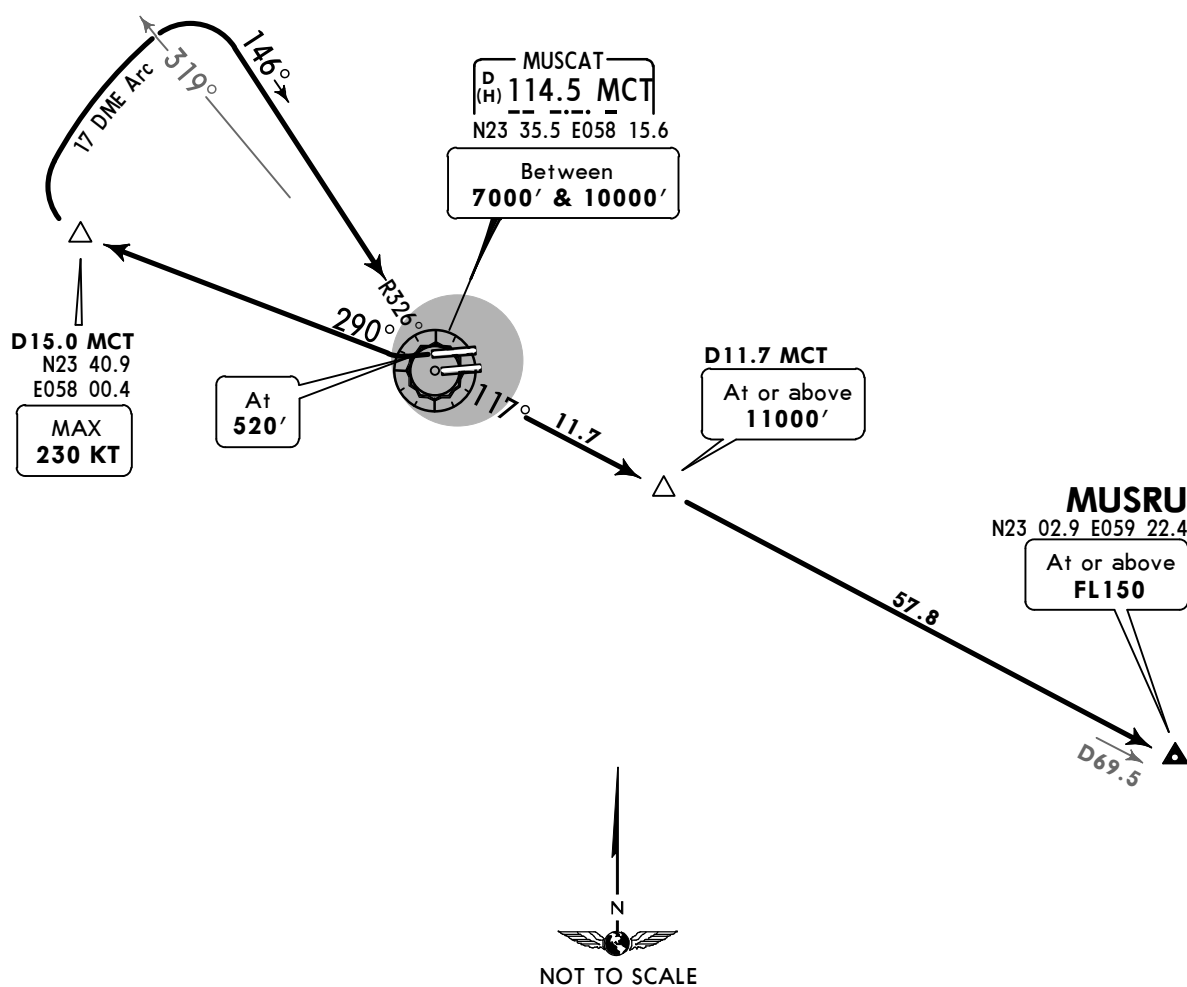
MUSCAT, OMAN  
SID

Apt Elev  
49'

Trans level: FL150 Trans alt: 13000'



MUSRU 1X [MUSR1X]  
RWY 26R DEPARTURE



This SID requires a minimum climb gradient of 4.0% up to 600'.

Gnd speed-KT	75	100	150	200	250	300
4.0% V/V (fpm)	304	405	608	810	1013	1215

ROUTING

Climb on runway heading to 520', turn RIGHT, intercept MCT R-290 to D15.0 MCT, turn RIGHT, along MCT 17 DME arc, when passing MCT R-319 turn RIGHT, intercept MCT R-326 inbound to MCT, turn LEFT, MCT R-117 to MUSRU.

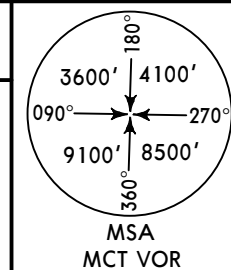


OOMS/MCT  
MUSCAT INTL

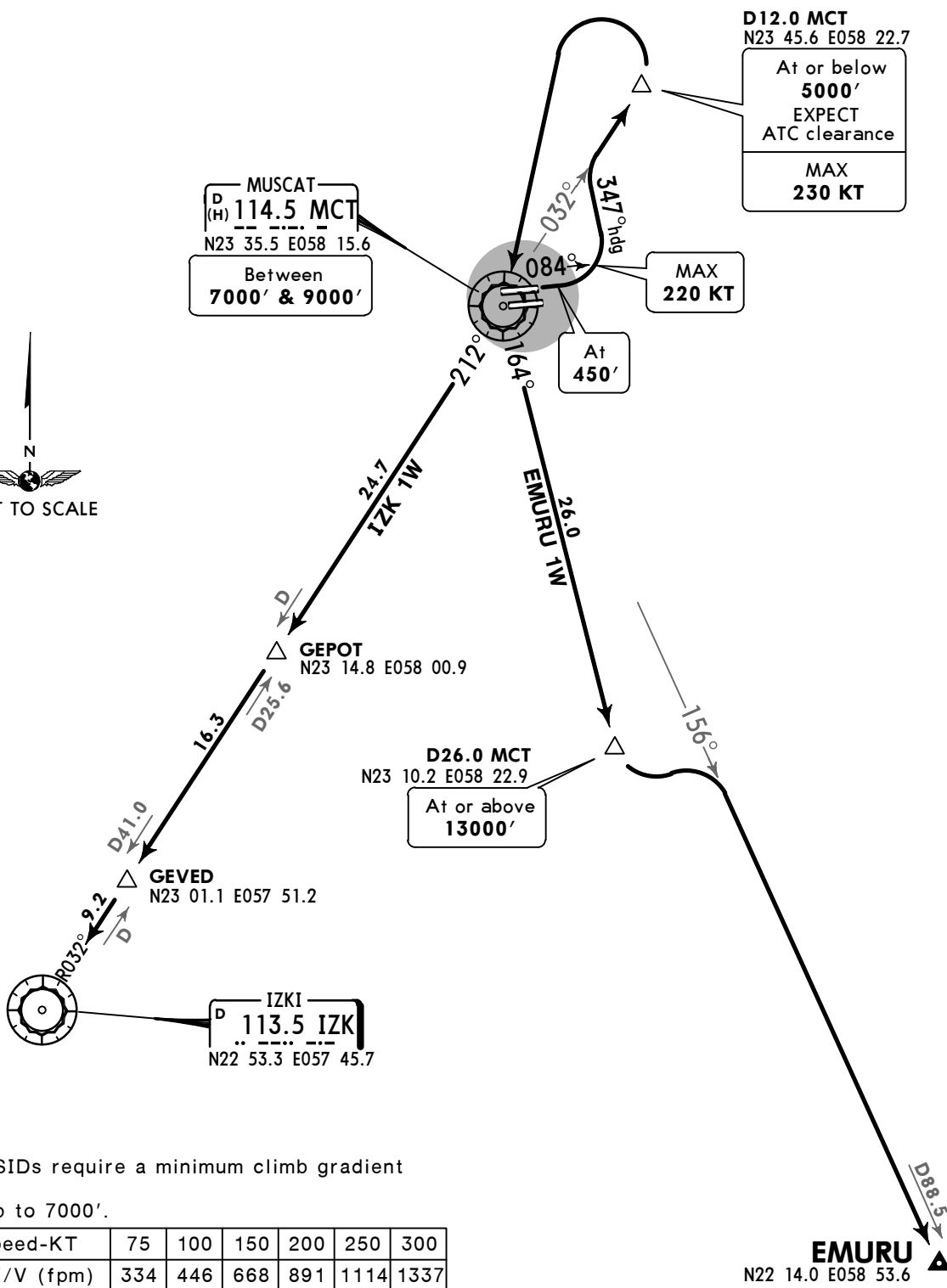
JEPPESEN  
10 JUL 15 (10-3H)

MUSCAT, OMAN  
SID

Apt Elev 49' Trans level: FL150 Trans alt: 13000'



EMURU 1W [EMUR1W]  
IZK 1W  
RWY 08L DEPARTURES



These SIDs require a minimum climb gradient of 4.4% up to 7000'.

Gnd speed-KT	75	100	150	200	250	300
4.4% V/V (fpm)	334	446	668	891	1114	1337

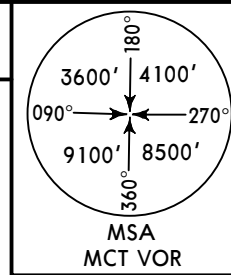
SID	ROUTING
<b>EMURU 1W</b>	Climb on runway heading to 450', turn LEFT, 347° heading, intercept MCT R-032 to D12.0 MCT, turn LEFT direct to MCT, MCT R-164 to D26.0 MCT, turn LEFT, intercept MCT R-156 to EMURU.
<b>IZK 1W</b>	Climb on runway heading to 450', turn LEFT, 347° heading, intercept MCT R-032 to D12.0 MCT, turn LEFT direct to MCT, MCT R-212 (IZK R-032 inbound) via GEPOT and GEVED to IZK.

OOMS/MCT  
MUSCAT INTL

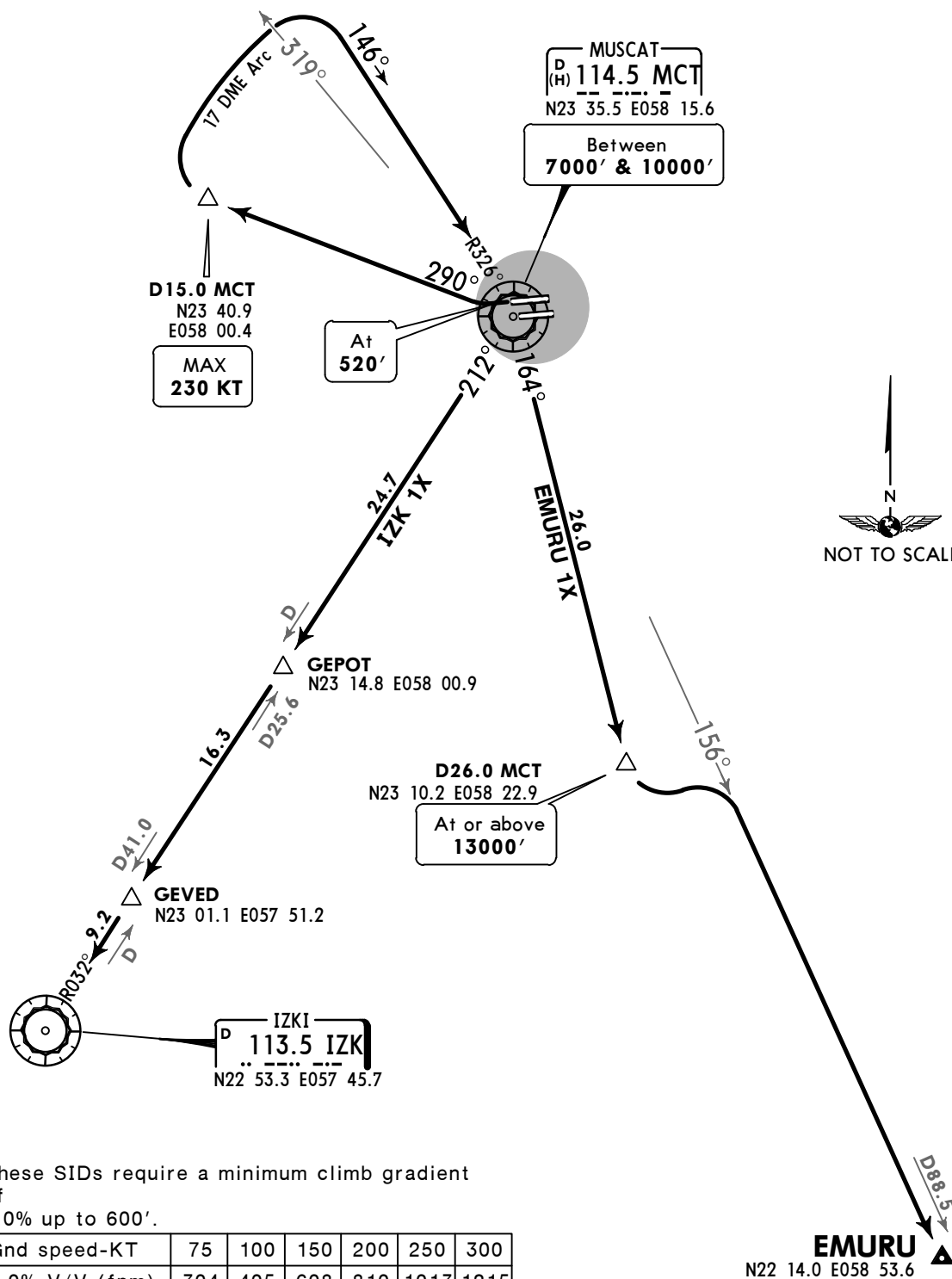
**JEPPESEN**  
10 JUL 15 (10-3J)

MUSCAT, OMAN  
**SID**

Apt Elev 49' Trans level: FL150 Trans alt: 13000'



**EMURU 1X [EMUR1X]  
IZK 1X  
RWY 26R DEPARTURES**



These SIDs require a minimum climb gradient of 4.0% up to 600'.

Gnd speed-KT	75	100	150	200	250	300
4.0% V/V (fpm)	304	405	608	810	1013	1215

SID	ROUTING
<b>EMURU 1X</b>	Climb on runway heading to 520', turn RIGHT, intercept MCT R-290 to D15.0 MCT, turn RIGHT, along MCT 17 DME arc, when passing MCT R-319 turn RIGHT, intercept MCT R-326 inbound to MCT, turn RIGHT, MCT R-164 to D26.0 MCT, turn LEFT, intercept MCT R-156 to EMURU.
<b>IZK 1X</b>	Climb on runway heading to 520', turn RIGHT, intercept MCT R-290 to D15.0 MCT, turn RIGHT, along MCT 17 DME arc, when passing MCT R-319 turn RIGHT, intercept MCT R-326 inbound to MCT, turn RIGHT, MCT R-212 (IZK R-032 inbound) via GEPOT and GEVED to IZK.

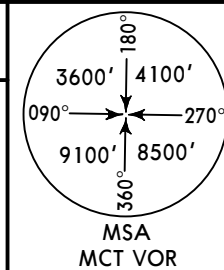
**OOMS/MCT**  
MUSCAT INTL

**JEPPESEN**  
10 JUL 15 (10-3K)

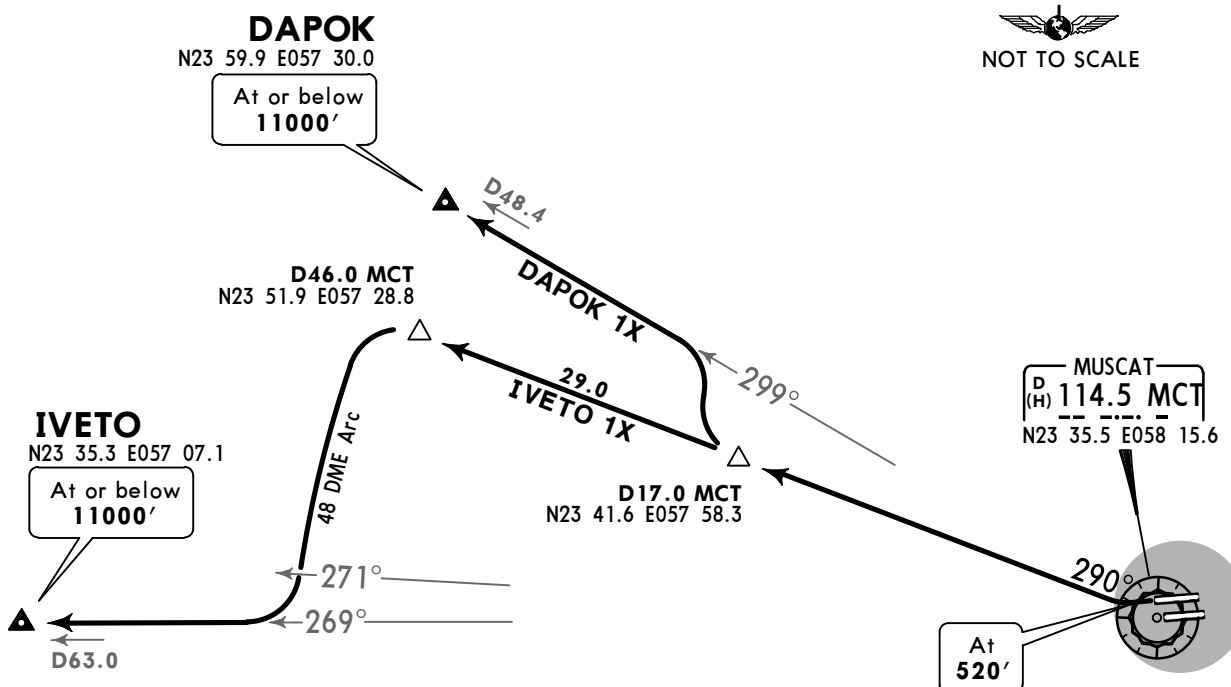
**MUSCAT, OMAN**  
**SID**

Apt Elev  
49'

Trans level: FL150 Trans alt: 13000'



**DAPOK 1X [DAPO1X]**  
**IVETO 1X [IVET1X]**  
**RWY 26R DEPARTURES**



SID	ROUTING
<b>DAPOK 1X</b>	Climb on runway heading to 520', turn RIGHT, intercept MCT R-290 to D17.0 MCT, turn RIGHT, intercept MCT R-299 to DAPOK.
<b>IVETO 1X</b>	Climb on runway heading to 520', turn RIGHT, intercept MCT R-290 to D46.0 MCT, turn LEFT, along MCT 48 DME arc, when passing MCT R-271 turn RIGHT, intercept MCT R-269 to IVETO.

**OOMS/MCT**  
MUSCAT INTL

**JEPPESEN**  
10 JUL 15 **10-3M**

**MUSCAT, OMAN**  
**SID**

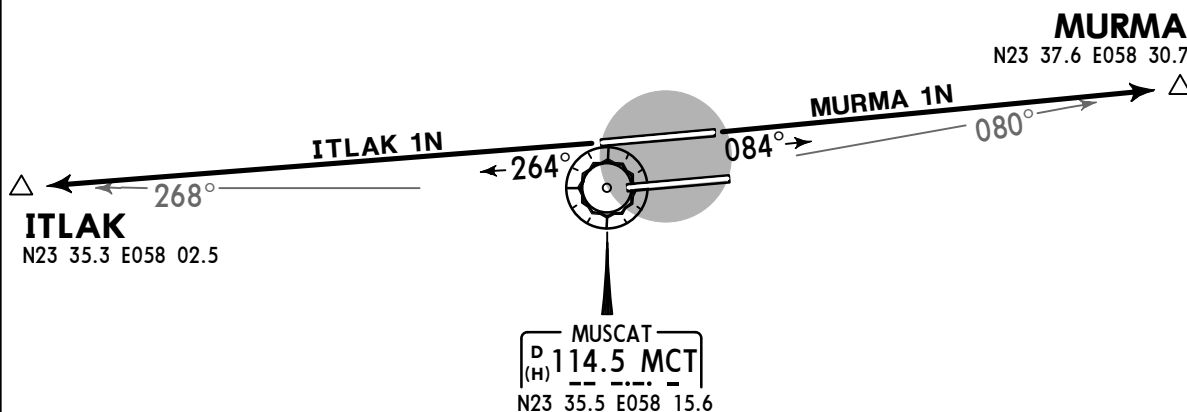
MUSCAT Approach (R)  
**121.2**

Apt Elev  
**49'**

Trans level: FL150    Trans alt: 13000'

**ITLAK 1N [ITLA1N]**  
**MURMA 1N [MURM1N]**  
**RWYS 26R, 08L DEPARTURES**

**TEMPORARY PROCEDURES**  
REFER ALSO TO LATEST NOTAMS



These SIDs require a minimum climb gradient of 5% until 3000'.

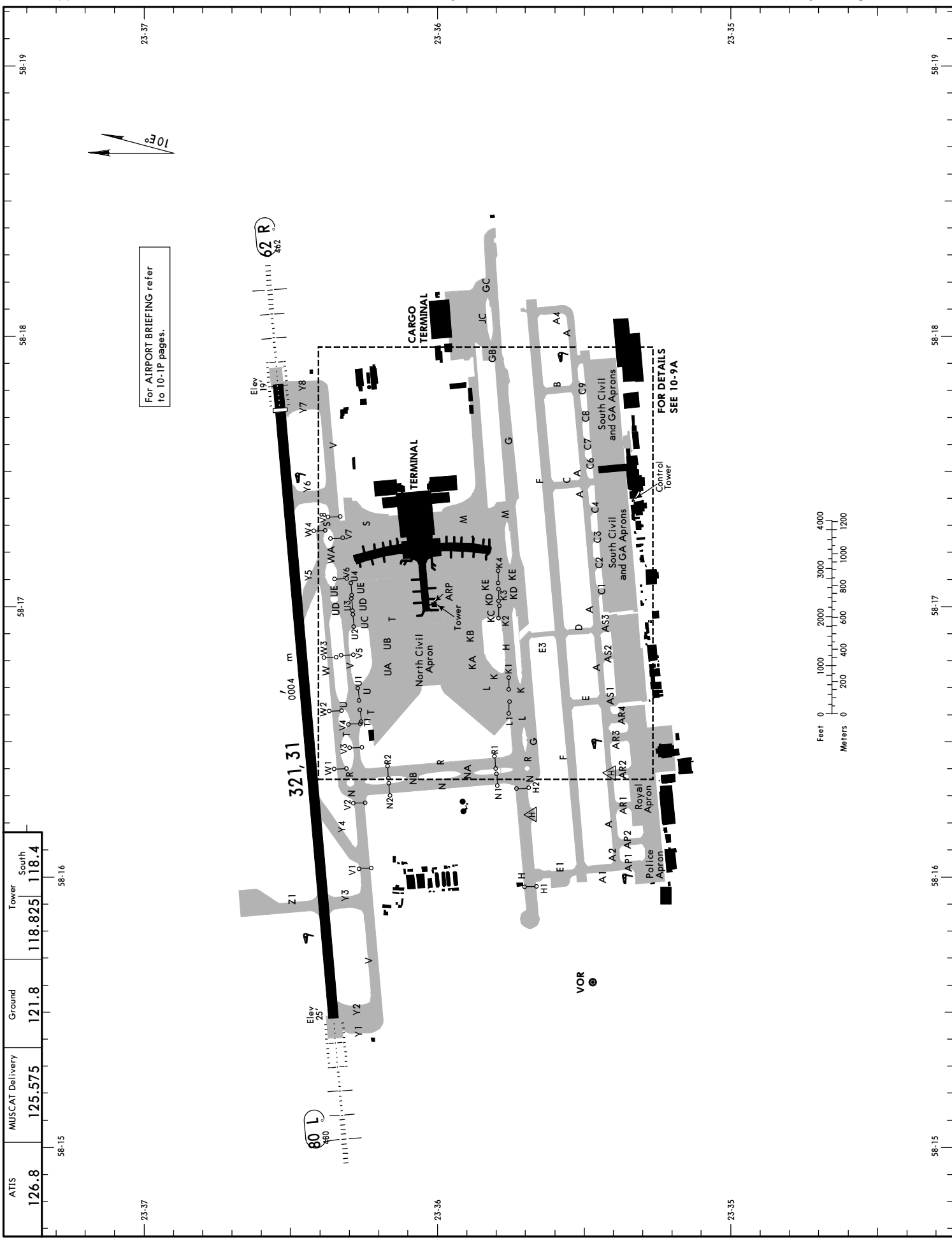


Gnd speed-KT	75	100	150	200	250	300
5.0% V/V (fpm)	380	506	760	1013	1266	1519

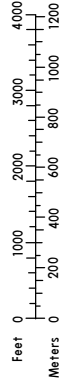
SID	RWY	ROUTING
<b>ITLAK 1N</b>	<b>26R</b>	On 264° track to ITLAK, climbing to 3000'. Further climb and vectoring by MUSCAT Radar.
<b>MURMA 1N</b>	<b>08L</b>	On 084° track to MURMA, climbing to 3000'. Further climb and vectoring by MUSCAT Radar.

ATIS	MUSCAT Delivery	Ground	Tower	South
126.8	125.575	121.8	118.825	118.4

**OOMS/MCT**  
 Apt Elev 49'  
 N23 36.0 E058 17.0



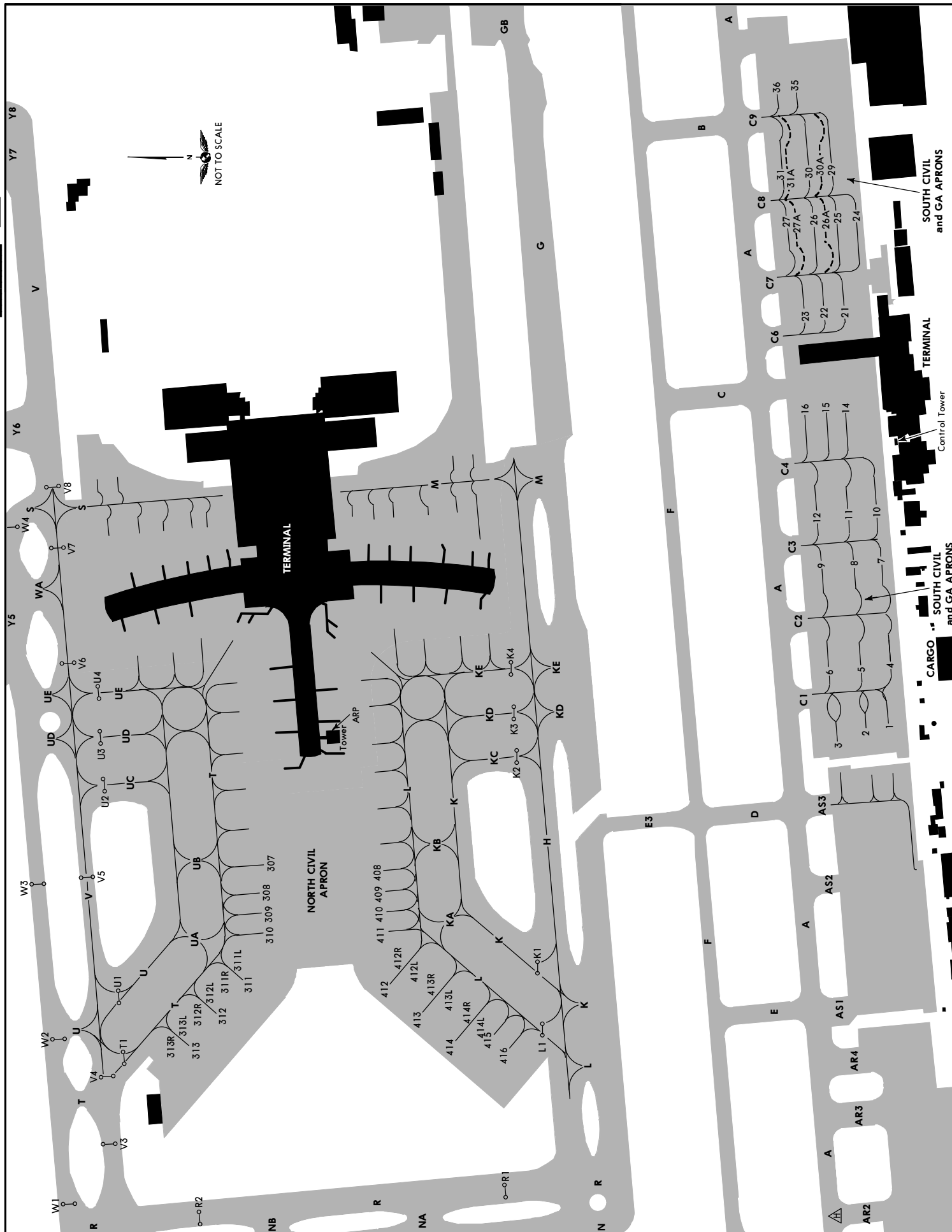
For AIRPORT BRIEFING refer to 10-1P pages.



23-37

23-36

23-35



OOMS/MCT

**JEPPESEN**  
 30 SEP 16 **10-9B** **Eff 13 Oct**

**MUSCAT, OMAN**  
**MUSCAT INTL**

RWY		ADDITIONAL RUNWAY INFORMATION		USABLE LENGTHS		TAKE-OFF	WIDTH
		LANDING BEYOND		Threshold	Glide Slope		
08L	26R	HIRL (60m) CL HIALS-II TDZ REIL PAPI-L ①			12,029' 3666m	②	197' 60m
			12,598' 3840m	11,504' 3506m			

① (angle 3.0°)

② TAKE-OFF RUN AVAILABLE

RWY 08L: From rwy head 13,123' (4000m)  
 twy Y3 int 10,866' (3312m)

RWY 26R: From rwy head 13,123' (4000m)  
 twy Y6 int 10,846' (3306m)

**Standard**

TAKE-OFF

A B C D	LVP must be in force		
	RCLM (DAY only) or RL	RCLM (DAY only) or RL	NIL (DAY only)
	550m		

CHANGES: None.

OOMS/MCT

**JEPPESEN**  
30 SEP 16 **10-9C** **Eff 13 Oct**

MUSCAT, OMAN

MUSCAT INTL

INS COORDINATES						
STAND No.	COORDINATES	Elev.	STAND No.	COORDINATES	Elev.	
1	N23 35.3 E058 17.0	51	307	N23 36.1 E058 16.9	24	
2	N23 35.4 E058 17.0	50	308 thru 310	N23 36.1 E058 16.8	24	
3	N23 35.4 E058 17.0	49	311	N23 36.1 E058 16.7	24	
4	N23 35.3 E058 17.1	50	311L	N23 36.1 E058 16.7	23	
5	N23 35.4 E058 17.1	49	311R	N23 36.1 E058 16.7	25	
6	N23 35.4 E058 17.1	47	312	N23 36.1 E058 16.6	24	
7	N23 35.3 E058 17.2	48	312L	N23 36.1 E058 16.7	23	
8	N23 35.4 E058 17.2	47	312R	N23 36.1 E058 16.6	25	
9	N23 35.4 E058 17.2	45	313	N23 36.2 E058 16.6	24	
10	N23 35.4 E058 17.3	46	313L	N23 36.2 E058 16.6	23	
11	N23 35.4 E058 17.3	45	313R	N23 36.2 E058 16.6	24	
12	N23 35.4 E058 17.3	43	408	N23 36.0 E058 16.8	24	
14, 15	N23 35.4 E058 17.4	42	409	N23 36.0 E058 16.8	23	
16	N23 35.4 E058 17.4	41	410	N23 36.0 E058 16.8	24	
21	N23 35.4 E058 17.6	40	411	N23 36.0 E058 16.8	23	
22	N23 35.4 E058 17.6	39	412	N23 35.9 E058 16.7	26	
23	N23 35.4 E058 17.6	38	412L	N23 35.9 E058 16.7	25	
24	N23 35.4 E058 17.7	40	412R	N23 36.0 E058 16.7	26	
25	N23 35.4 E058 17.7	39	413	N23 35.9 E058 16.7	26	
26	N23 35.4 E058 17.7	37	413L	N23 35.9 E058 16.7	25	
26A	N23 35.4 E058 17.7	38	413R	N23 35.9 E058 16.7	26	
27, 27A	N23 35.5 E058 17.7	36	414	N23 35.9 E058 16.6	26	
29	N23 35.4 E058 17.8	37	414L	N23 35.8 E058 16.6	25	
30	N23 35.4 E058 17.8	35	414R	N23 35.9 E058 16.6	26	
30A	N23 35.4 E058 17.8	36	415	N23 35.8 E058 16.6	26	
31	N23 35.5 E058 17.8	33	416	N23 35.8 E058 16.6	25	
31A	N23 35.5 E058 17.8	34				
35	N23 35.5 E058 17.9	33				
36	N23 35.5 E058 17.9	32				

--	--	--	--	--	--	--



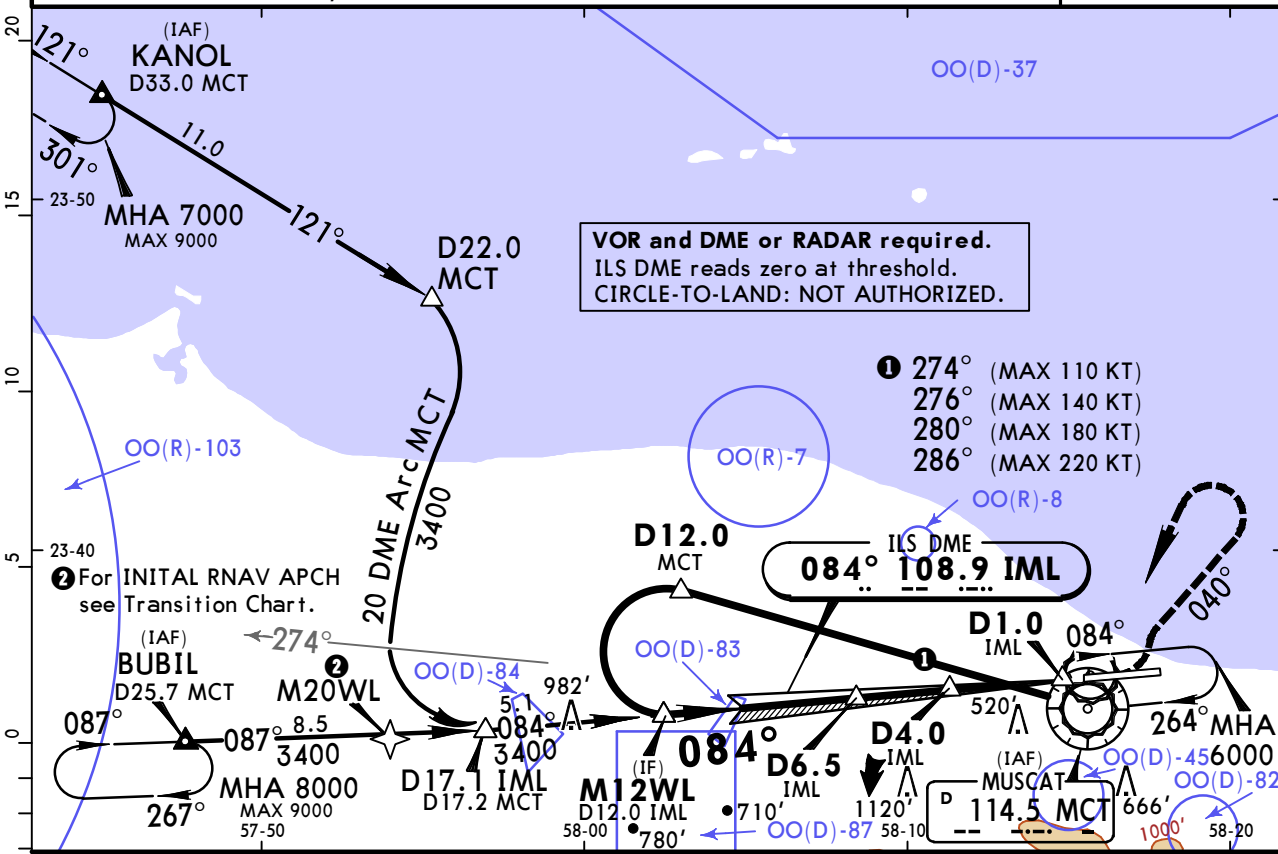
# OOMS/MCT MUSCAT INTL



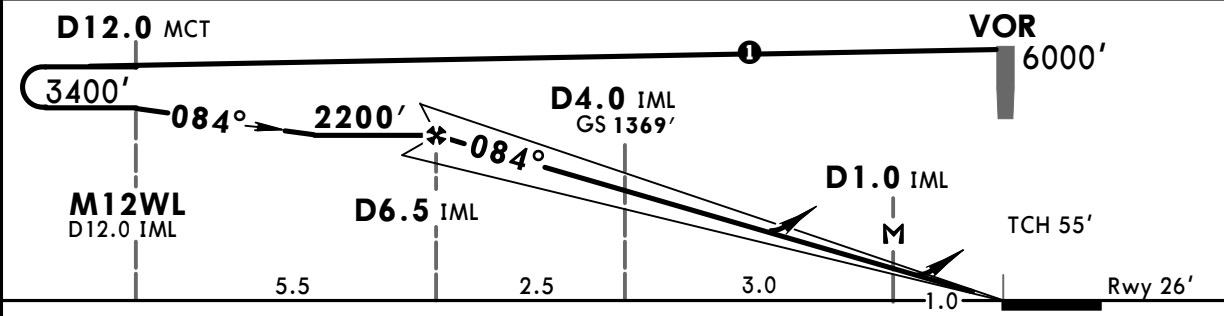
28 AUG 15 (11-1)

# MUSCAT, OMAN ILS or LOC Rwy 08L

ATIS <b>126.8</b>		MUSCAT Approach (R) <b>121.2</b>		MUSCAT Tower <b>118.825</b>	MUSCAT Tower South <b>118.4</b>	Ground <b>121.8</b>
LOC IML <b>108.9</b>	Final Apch Crs <b>084°</b>	GS <b>D4.0 IML</b> 1369' (1343')	ILS DA(H) Refer to Minimums	Apt Elev 49' Rwy 26'		
<b>MISSED APCH: Climb on rwy hdg to 510', then turn LEFT (MAX 210 KT) to follow R-040 MCT climbing to 2800'. Then turn LEFT (MAX 220 KT) to VOR at 6000' and hold.</b> Turns before MAP prohibited.						
Alt Set: hPa		Rwy Elev: 1 hPa	Trans level: FL 150		Trans alt: 13000'	



LOC (GS out)	IML DME	6.0	5.0	4.0	3.0	2.0
	ALTITUDE	2070'	1740'	1410'	1080'	740'



Gnd speed-Kts	70	90	100	120	140	160	HIALS-II REIL PAPI 	Refer to Missed Apch above	
ILS GS	3.00°	372	478	531	637	743			849
LOC Descent Angle	3.12°	386	497	552	662	773			883
MAP at D1.0 IML									

<b>Standard</b>				<b>STRAIGHT-IN LANDING RWY 08L</b>	
<b>ILS</b> DA(H) A: <b>231'</b> (205') C: <b>252'</b> (226') B: <b>243'</b> (217') D: <b>262'</b> (236')			<b>LOC (GS out)</b> DA(H) <b>530'</b> (504')		
FULL		Limited	ALS out		ALS out
A			RVR 1500m		
B	RVR 550m	RVR 750m	RVR 1200m		
C			RVR 1600m	CMV 2400m	
D					

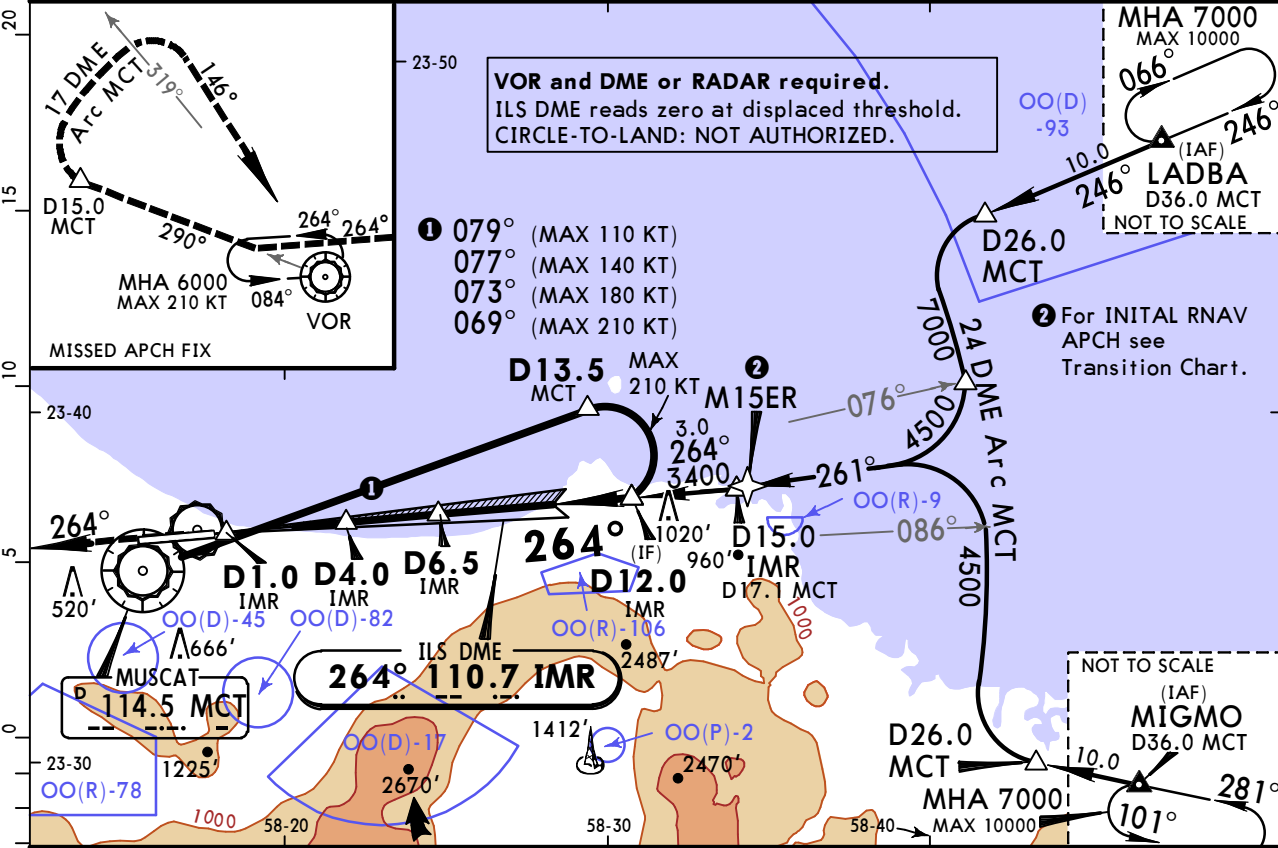
PANS OPS

# OOMS/MCT MUSCAT INTL

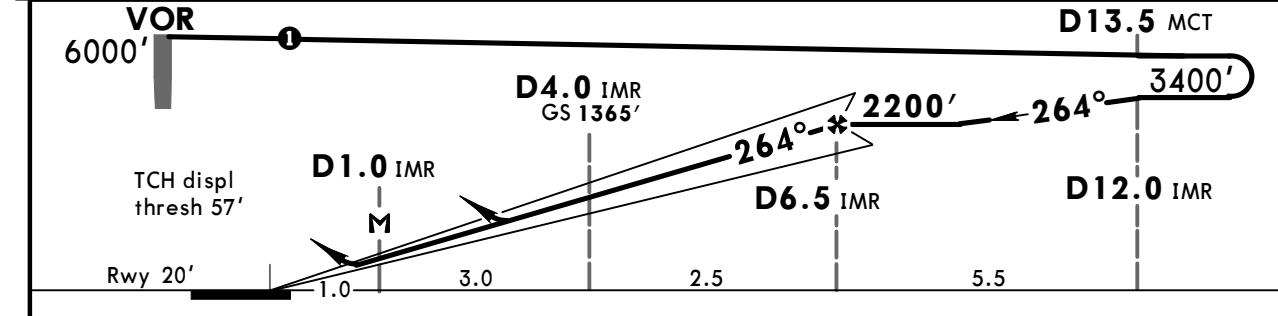
**JEPPESSEN**  
28 AUG 15 **(11-2)**

# MUSCAT, OMAN ILS or LOC Rwy 26R

BRIEFING STRIP™	ATIS <b>126.8</b>		MUSCAT Approach (R) <b>121.2</b>		MUSCAT Tower South <b>118.825</b>   <b>118.4</b>		Ground <b>121.8</b>
	LOC IMR <b>110.7</b>	Final Apch Crs <b>264°</b>	GS <b>D4.0 IMR</b> <b>1365'</b> (1345')	ILS DA(H) Refer to Minimums	Apt Elev 49' Rwy 20'		
<b>MISSED APCH:</b> Climb STRAIGHT AHEAD on rwy hdg to intercept and follow R-290 MCT (ILS: MIM turn ALT 510') to D15.0 MCT. Then turn RIGHT to follow 17 DME Arc MCT. Then turn RIGHT to follow R-326 MCT inbound direct to VOR climbing to 6000' and hold.							
Alt Set: hPa		Rwy Elev: 1 hPa	Trans level: FL 150	Trans alt: 13000'			MSA MCT VOR



LOC (GS out)	IMR DME	1.0	2.0	3.0	4.0	5.0	6.0
	ALTITUDE	410'	740'	1070'	1410'	1740'	2070'



Gnd speed-Kts	70	90	100	120	140	160
ILS GS	3.00°	372	478	531	637	743
LOC Descent Angle	3.14°	389	500	556	667	778
MAP at D1.0 IMR						

HIALS-II  
REIL  
PAPI

Refer to Missed Apch above

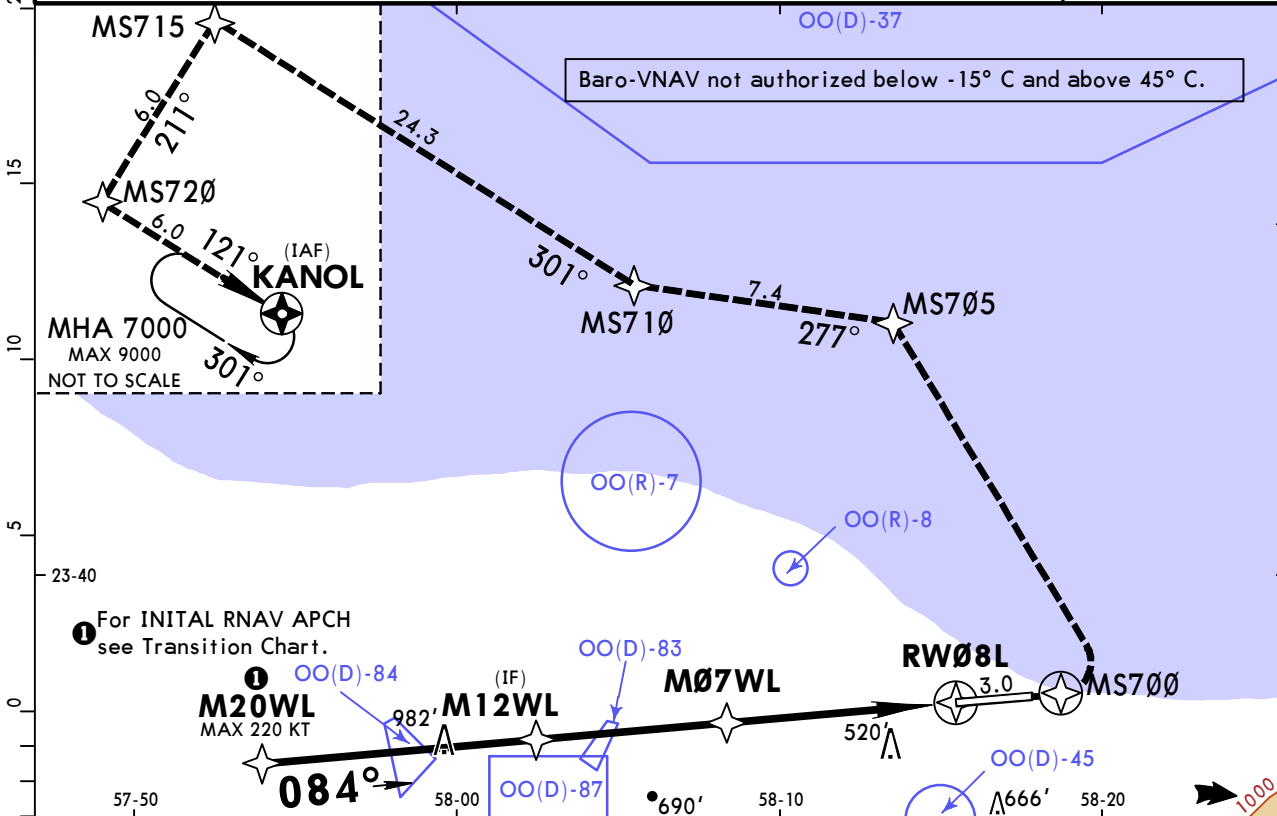
<b>Standard</b>					<b>STRAIGHT-IN LANDING RWY 26R</b>	
<b>ILS</b> DA(H) AB: <b>220'</b> (200') C: <b>228'</b> (208') D: <b>239'</b> (219')			<b>LOC (GS out)</b> DA(H) <b>370'</b> (350')			
FULL		Limited	ALS out		ALS out	
A					RVR 1500m	
B	RVR 550m	RVR 750m	RVR 1200m	RVR 900m	RVR 1600m	
C						
D						

# OOMS/MCT MUSCAT INTL

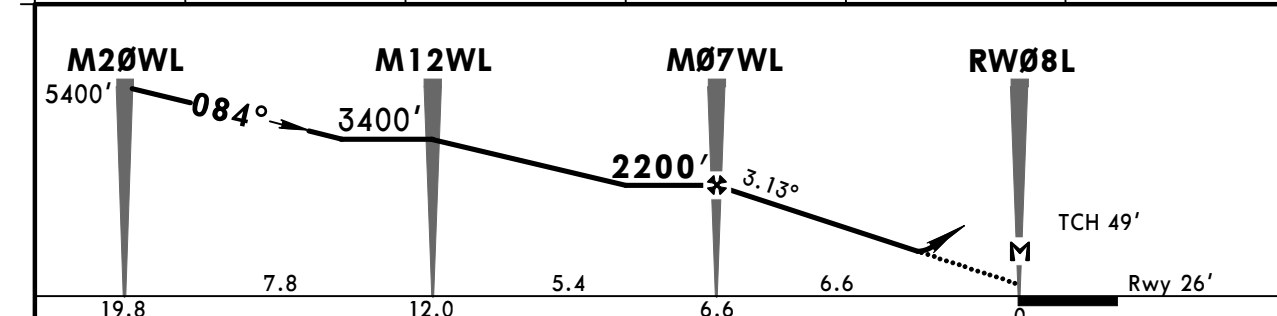
**JEPPESSEN**  
28 AUG 15 (12-1)

# MUSCAT, OMAN RNAV (GNSS) Rwy 08L

ATIS <b>126.8</b>		MUSCAT Approach (R) <b>121.2</b>		MUSCAT Tower <b>118.825</b>	MUSCAT Tower South <b>118.4</b>	Ground <b>121.8</b>
RNAV	Final Apch Crs <b>084°</b>	Minimum Alt <b>M07WL</b> <b>2200'</b> (2174')	LNAV/VNAV DA(H) <b>416'</b> (390')	Apt Elev 49' Rwy 26'		9100'
<b>MISSED APCH: DIRECT to MS700, turn LEFT DIRECT to MS705 (MAX 220 KT), turn LEFT to MS710, turn RIGHT to MS715, turn LEFT to MS720, turn LEFT to KANOL climbing to 7000' and hold.</b>						
Alt Set: hPa		Rwy Elev: 1 hPa	Trans level: FL 150	Trans alt: 13000'		MSA ARP
<b>1. RNP approach required. 2. CIRCLE-TO-LAND: NOT AUTHORIZED.</b>						



DIST to RW08L	6.0	5.0	4.0	3.0	2.0
ALTITUDE	2080'	1740'	1410'	1080'	750'



Gnd speed-Kts	70	90	100	120	140	160	HIALS-II REIL PAPI	<b>MS700</b> <b>MS705</b> → ← LT
Descent Angle	3.13°	388	498	554	665	775		
MAP at RW08L								

<b>Standard</b>		STRAIGHT-IN LANDING RWY 08L	
LNAV/VNAV		LNAV	
DA(H) <b>416'</b> (390')		DA(H) <b>530'</b> (504')	
ALS out		ALS out	
A	RVR 1100m	RVR 1500m	
B		RVR 1500m	
C	RVR 1800m	RVR 1600m	CMV 2400m
D			

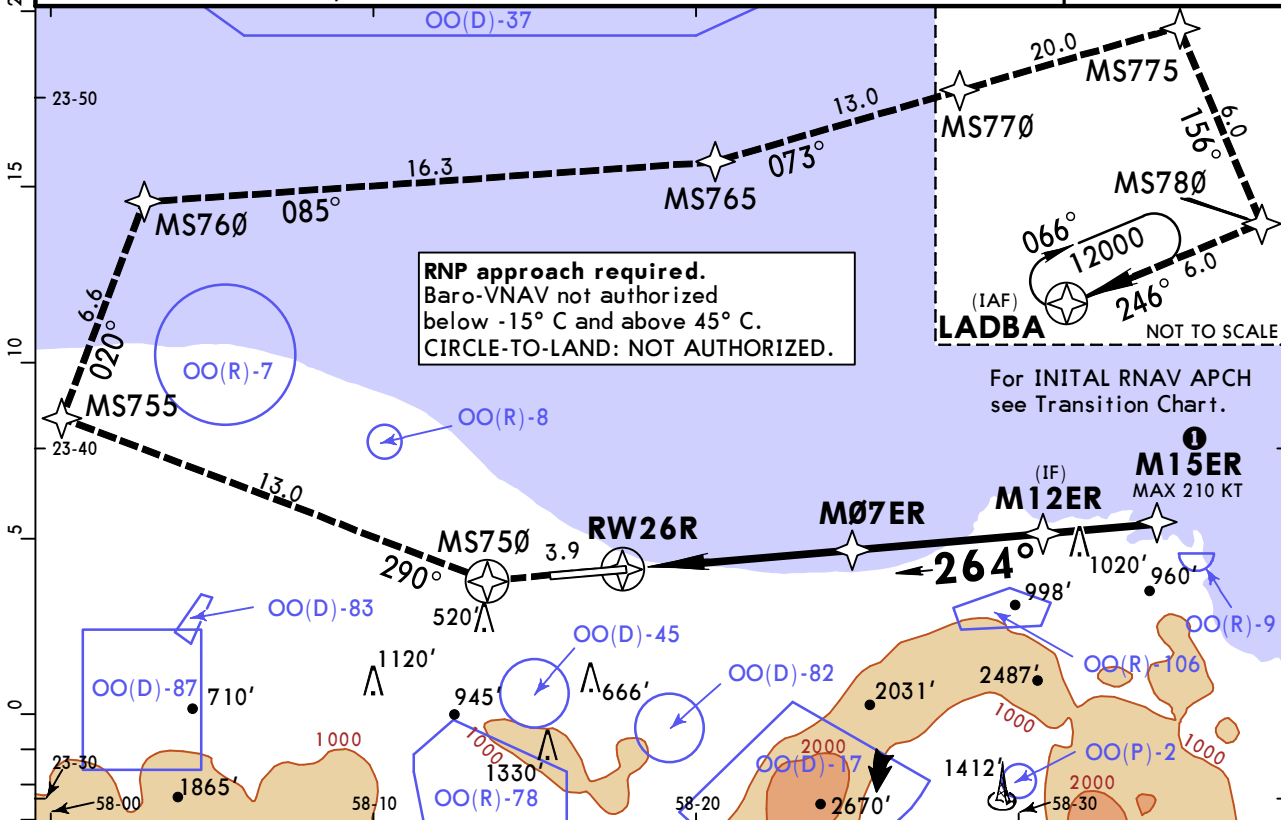
CHANGES: Communications.

# OOMS/MCT MUSCAT INTL

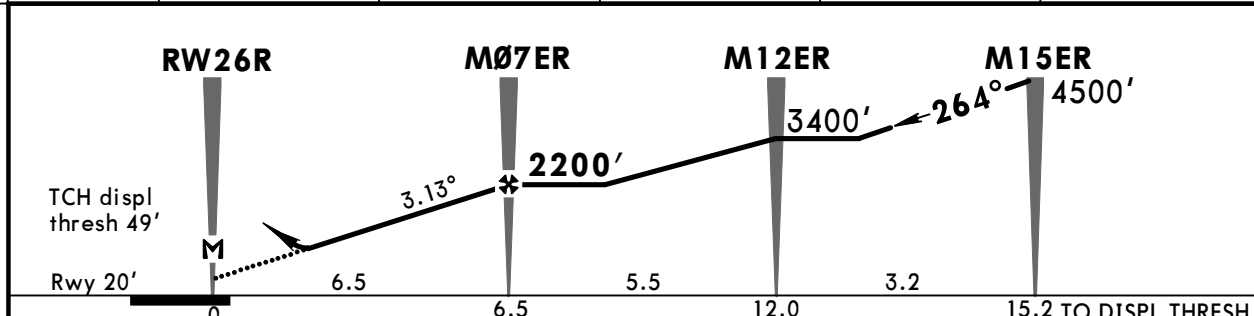
**JEPPESEN**  
28 AUG 15 (12-2)

# MUSCAT, OMAN RNAV (GNSS) Rwy 26R

ATIS <b>126.8</b>		MUSCAT Approach (R) <b>121.2</b>		MUSCAT Tower <b>118.825</b>	Tower South <b>118.4</b>	Ground <b>121.8</b>
RNAV	Final Apch Crs <b>264°</b>	Minimum Alt <b>M07ER</b> <b>2200'</b> (2180')	LNAV/VNAV DA(H) <b>430'</b> (410')	Apt Elev 49' Rwy 20'		9100' MSA ARP
<b>MISSED APCH: DIRECT to MS750 (MAX 220 KT), turn RIGHT to MS755, turn RIGHT to MS760, turn RIGHT to MS765, turn LEFT to MS770 at or above 7000'. Then to MS775, turn RIGHT to MS780, turn RIGHT to LADBA at or above 12000' and hold.</b>						
Alt Set: hPa		Rwy Elev: 1 hPa	Trans level: FL 150		Trans alt: 13000'	



DIST to RW26R	2.0	3.0	4.0	5.0	6.0
ALTITUDE	740'	1070'	1400'	1730'	2070'



Gnd speed-Kts	70	90	100	120	140	160	HIALS-II REIL PAPI	MAX <b>220 KT</b>	<b>MS750</b> →	← <b>MS755</b>
Descent Angle	3.13°	388	498	554	665	775				
MAP at RW26R										

<b>Standard</b>				<b>STRAIGHT-IN LANDING RWY 26R</b>			
LNAV/VNAV		LNAV		LNAV/VNAV		LNAV	
DA(H) <b>430'</b> (410')		DA(H) <b>530'</b> (510')		DA(H) <b>430'</b> (410')		DA(H) <b>530'</b> (510')	
ALS out		ALS out		ALS out		ALS out	
A	RVR 1200m	RVR 1500m		RVR 1500m		RVR 1500m	
B		RVR 1500m		RVR 1500m		RVR 1500m	
C		RVR 1900m		RVR 1600m		CMV 2400m	
D		RVR 1900m		RVR 1600m		CMV 2400m	

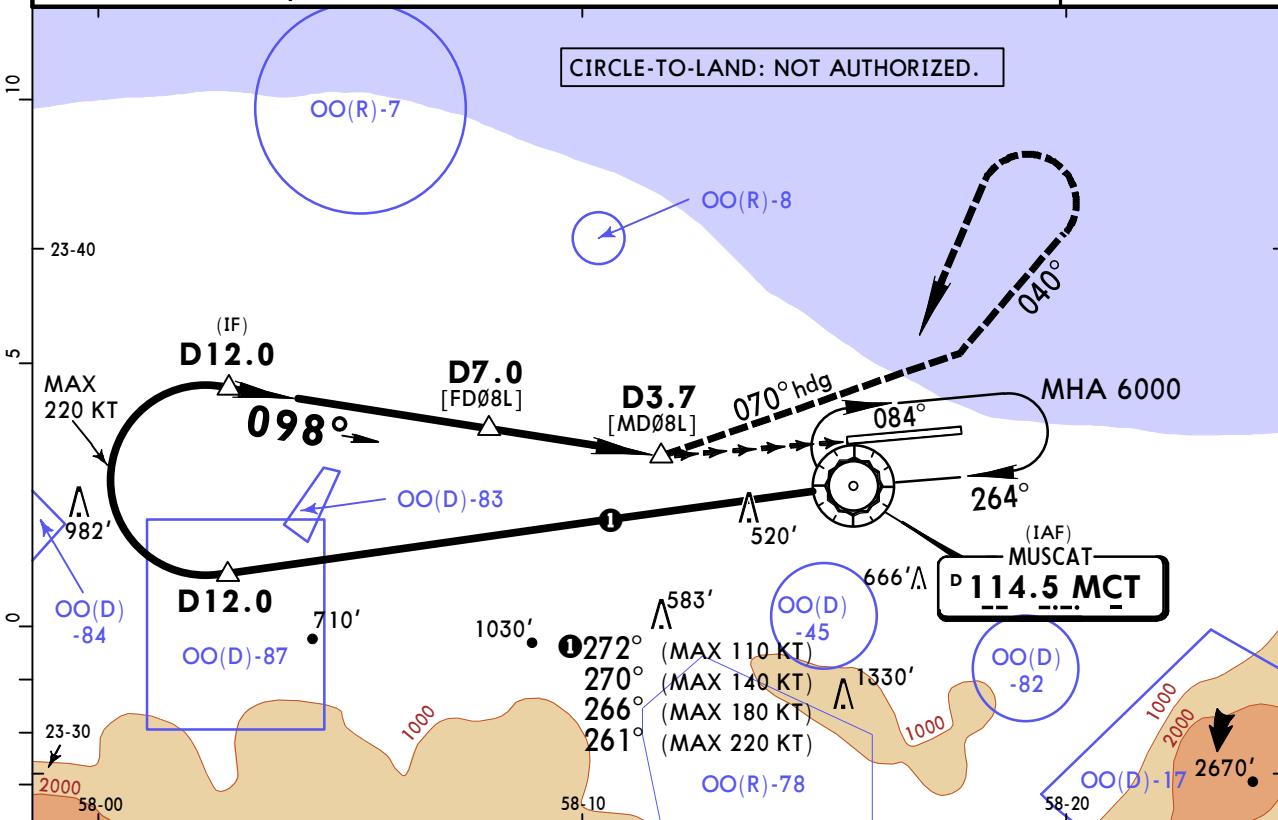
PANS OPS

**OOMS/MCT**  
**MUSCAT INTL**

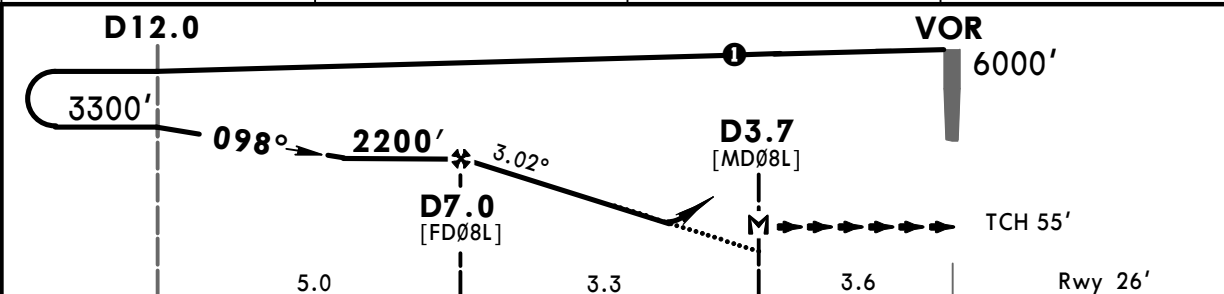
**JEPPESEN**  
28 AUG 15 (13-1)

**MUSCAT, OMAN**  
**VOR Rwy 08L**

ATIS <b>126.8</b>		MUSCAT Approach (R) <b>121.2</b>		MUSCAT Tower <b>118.825</b>	MUSCAT Tower South <b>118.4</b>	Ground <b>121.8</b>
VOR MCT <b>114.5</b>	Final Apch Crs <b>098°</b>	Minimum Alt <b>D7.0</b> 2200' (2174')	DA(H) <b>1160'</b> (1134')	Apt Elev 49' Rwy 26'		
<b>MISSED APCH: Turn LEFT on hdg 070° to intercept and follow R-040 (MAX 210 KT). Climb to 2800, then turn LEFT (MAX 220 KT) direct to VOR, climb to 6000' and hold. Turns before MAP prohibited.</b>						
Alt Set: hPa		Rwy Elev: 1 hPa	Trans level: FL 150	Trans alt: 13000'		MSA MCT VOR
<b>1. DME or RADAR required. 2. Final track 14° offset of RCL.</b>						



MCT DME	6.0	5.0	4.0
ALTITUDE	1940'	1620'	1300'



Gnd speed-Kts	70	90	100	120	140	160	
Descent Angle 3.02°	374	481	534	641	748	855	
MAP at D3.7							

**Standard STRAIGHT-IN LANDING RWY 08L**

DA(H) **1160'** (1134')

ALS out

A	RVR 1500m	
B	RVR 1500m	
C	CMV 4600m	CMV 5000m
D	CMV 4600m	CMV 5000m

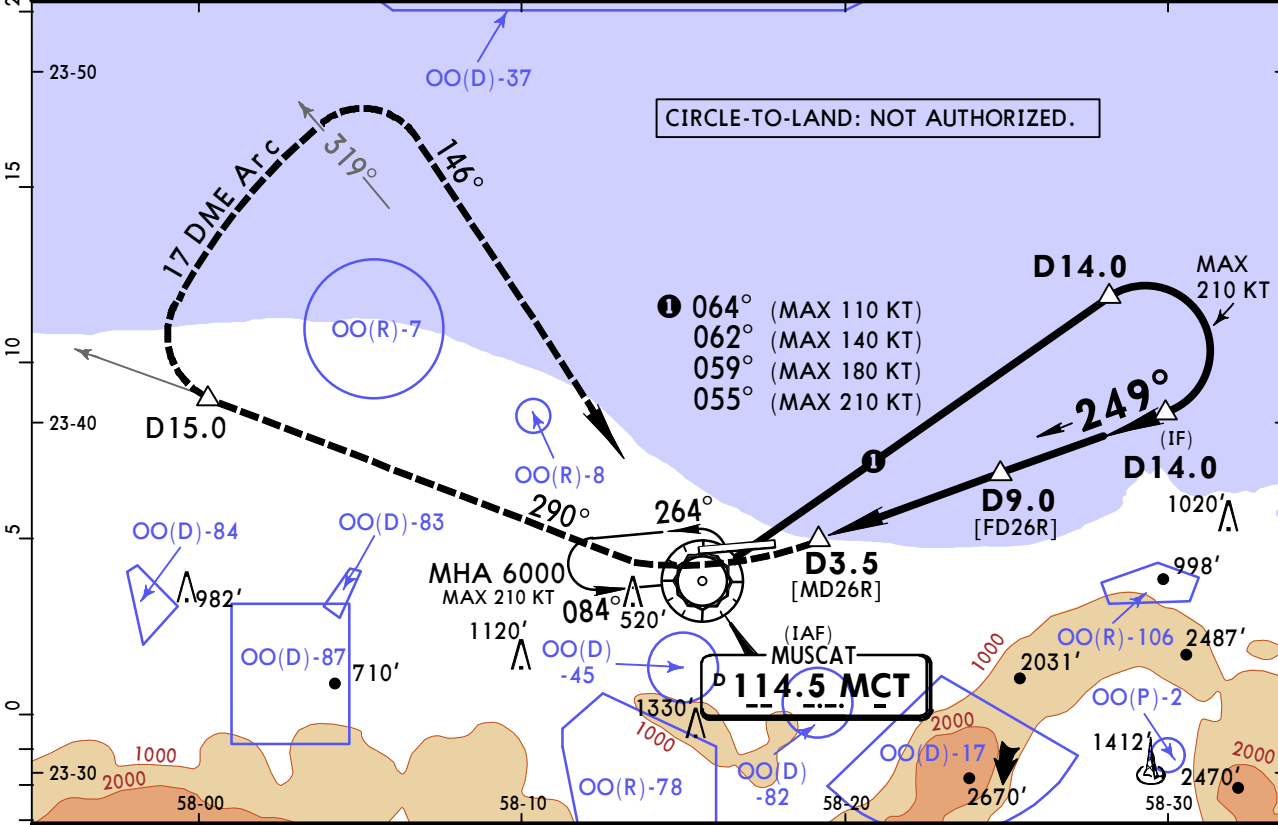
# OOMS/MCT MUSCAT INTL



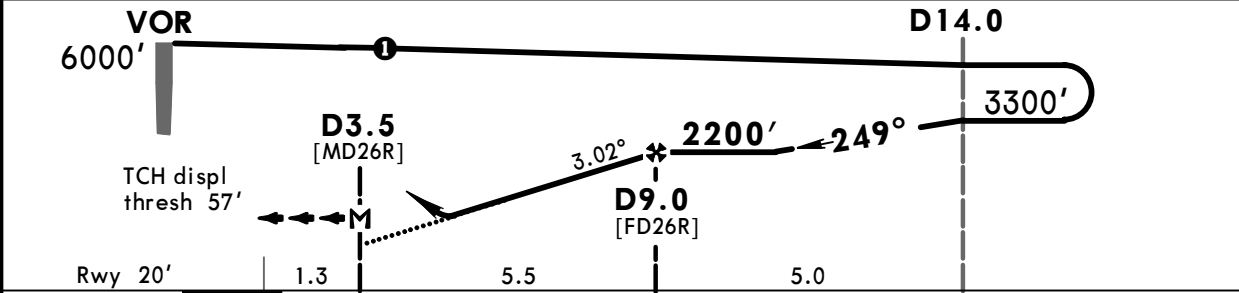
28 AUG 15 **13-2**

# MUSCAT, OMAN VOR Rwy 26R

ATIS <b>126.8</b>		MUSCAT Approach (R) <b>121.2</b>		MUSCAT Tower <b>118.825</b>	Tower South <b>118.4</b>	Ground <b>121.8</b>
VOR MCT <b>114.5</b>	Final Apch Crs <b>249°</b>	Minimum Alt <b>D9.0</b> 2200' (2180')	DA(H) <b>530'</b> (510')	Apt Elev 49' Rwy 20'		
<b>MISSED APCH:</b> Turn RIGHT to follow R-290. At D15.0 turn RIGHT and follow 17 DME Arc (MAX 220 KT). Turn RIGHT to follow R-326 inbound direct to VOR climbing to 6000' and hold.						
Alt Set: hPa		Rwy Elev: 1 hPa	Trans level: FL 150	Trans alt: 13000'		MSA MCT VOR
<b>1. DME or RADAR required.</b> <b>2. Final track 15° offset of RCL.</b>						



MCT DME	4.0	5.0	6.0	7.0	8.0
ALTITUDE	660'	980'	1300'	1620'	1940'



Gnd speed-Kts	70	90	100	120	140	160
Descent Angle 3.02°	374	481	534	641	748	855
MAP at D3.5						

MCT on **114.5 R-290**

**Standard** STRAIGHT-IN LANDING RWY 26R

DA(H) **530'** (510')

ALS out

A	RVR 1500m	
B	RVR 1500m	
C	RVR 1600m	CMV 2400m
D	RVR 1600m	CMV 2400m

## Chart changes since cycle 01-2017

ADD = added chart, REV = revised chart, DEL = deleted chart.

ACT	PROCEDURE IDENT	INDEX	REV DATE	EFF DATE
-----	-----------------	-------	----------	----------

**MUSCAT, (MUSCAT INTL - OOMS)**

## TERMINAL CHART CHANGE NOTICES

No Chart Change Notices for Airport OOMS