



USC PSYCHE



A NEWSLETTER OF THE
DEPARTMENT OF PSYCHIATRY & THE BEHAVIORAL SCIENCES

Fall 2019

Chair's Message



Steven Siegel, MD PhD

Greetings. I am pleased to share with you this long-overdue edition of our departmental newsletter. In the midst of incredible expansion, we've been remiss in providing regular updates. The lapse, however, affords us the opportunity to capture in one place a snapshot of the exciting growth we've experienced, particularly with regard to faculty hires. Since the Spring 2018 newsletter, nearly three dozen new faculty members have joined our ranks! They are listed on the second page under their respective divisions. Of note, the Student Counseling and Mental Health faculty roster has increased by approximately 40% since joining the department, bringing the provider-to-student ratio in line with national standards – a goal we are thrilled to have helped accomplish. I invite you to join me in welcoming and acknowledging the collective wealth of expertise *all* of our new faculty bring to USC.

To further highlight the exceptional contributions of our faculty, old and new, this edition features a small number of select faculty publications over the past year. I'm sure you will be as impressed as I am. We look forward to featuring faculty awards and honors in future newsletter editions. It's not just the faculty that has grown, however. Our staff has also multiplied. In a future edition of this newsletter (which we hope will be forthcoming in *less* than one year), we will introduce you to the incredible staff members who have joined us across many divisions and service locations. In the meantime, in this edition, we honor six exceptional staff members who recently celebrated employment milestones ranging from 10 to 35 years with USC. We are so grateful for the service and commitment of all our staff members.

With any expansion also comes some contraction. The past year has seen the retirements of three pillars of the department: Walt Chameides, Robert Sitzman, and Cheryl St. George, who, collectively, provided 126 years of service. Incredible. We are so grateful for their immeasurable contributions, and will miss them tremendously.

We are also thrilled to feature in this edition our recent graduates, of whom we are so proud, as well as an exceptional crop of incoming 2019-2020 residents, fellows, and trainees. We are eager and honored to have them join our remarkable training programs. In addition, we are delighted to highlight in this edition the work of one of our esteemed research faculty members, Dr. Lon Schneider, whose dedication to combatting Alzheimer's Disease through research and treatment development gives hope to patients and families, as well as spotlight Dr. Cliff Feldman, a voluntary faculty member whose longtime contributions to our department have been invaluable.

Finally, this edition features our Della Martin Appointees: Dr. Joey Trampush as Della Martin Assistant Professor, and Drs. Alexander Chen and Raghu Appasani as Della Martin Research Residents. Our generous gift from the Della Martin Foundation, whose mission is to advance the study and discovery of causes and cures for mental illness, makes it possible to support the important work of these esteemed researchers, and we extend our heartfelt appreciation for it.

I hope you enjoy reading this newsletter; it is a pleasure to share it with you. Should we ever overlook something important, or if you have ideas or items you'd like to see featured in a future edition, please share them with me (steven.siegel@med.usc.edu) or Gretchen Heidemann (gretchen.heidemann@med.usc.edu).

Inside This Issue:

- | | | | |
|----|-------------------------------|-------|--|
| 2: | Welcome, Faculty | 6-11: | Welcome, Residents, Fellows and Trainees |
| 3: | Voluntary Faculty Spotlight | 12: | Congratulations 2019 Graduates |
| 3: | Faculty Media Appearance | 13: | Della Martin Appointees |
| 4: | Featured Research | 14: | Staff Milestones |
| 5: | Featured Faculty Publications | 14: | Faculty Retirements |

Welcome, New(ish) Faculty!

July 2018 - July 2019

Student Counseling & Mental Health

Kendra Archer, LCSW

Clinical Social Worker, Crisis Services

Huzafa Ashraf, MD

Psychiatrist

Jessica Beale, PsyD

Psychologist

Anneka Busse, PsyD

Psychologist

Danielle Gonzales, PsyD

Psychologist

Jennifer Hsia, PhD

Behavioral Health Consultant

Brenda Ingram, EdD, LCSW

Program Director, Relationship and Sexual Violence
Prevention and Services (RSVP)

Erica Nanes, LMFT

Psychotherapist

Parissa Nili, PsyD

Psychologist

Charles Padow, LCSW

Clinical Social Worker

Melissa Pottash, LCSW

Clinical Social Worker

Karina Ramos, PhD

Psychologist

Robert (Robby) Rhodes, PhD

Psychologist, Athletics

Kathy Rojas, LCSW

Clinical Social Worker

Nancy Sandoval, LCSW

Clinical Social Worker, RSVP

Mary Weber, LMFT

Psychotherapist

LAC+USC

Rachel Balbas-Go, PMHNP, APRN

Medical Student Nurse Educator

Lincoln Bickford, MD

Psychiatric Emergency and Inpatient Services

Amber Bridges, MD

Psychiatric Inpatient Services, Augustus F. Hawkins

Sarah Ghebrendrias, MD

Psychiatric Emergency Services

Sharon Guo, MD

Psychiatric Inpatient Services, Augustus F. Hawkins

Talene Keshishian, MD

Medical Director, Adult Outpatient Psychiatric Clinic
Physician Advisor, Augustus F. Hawkins

Kai-Hong (Jeremy) Mao, MD

Medical Student Clerkship Director
Adult & Child Psychiatric Consultation-Liaison Services

Susie Morris, MD

Medical Director, Psychiatric Consultation-Liaison Services

Emily Ottiniano, DO

Psychiatric Consultation-Liaison Services

Anna Xiao, MD

Vice Chair of Clinical Affairs
Associate Chief of LAC+USC Psychiatry Services

Keck Medicine / USC Care

Stephanie Cho, MD

Director, Keck Psychiatric Consultation-Liaison (CL) Services
Assistant Program Director, CL Psychiatry Fellowship

Ronna Harris, LCSW

Psychotherapist, Keck Outpatient Services

Voluntary Faculty Spotlight

Clifford Feldman, MD, JD, MFS is an Adjunct Clinical Professor of Psychiatry and the Behavioral Sciences. Additionally, Dr. Feldman is the Medical Director for Psychiatry at USC Verdugo Hills Hospital, Medical Director at Las Encinas Hospital Intensive Outpatient Program, and Medical Director for Psychiatry at Huntington Hospital. Dr. Feldman also has a law degree, is a member of both the NY State and Supreme Court of the US bars, and is an attorney-physician in private solo practice. He is in the process of setting up the Pre-Pro Institute for Sports Psychology at Verdugo Hills Hospital as part of his psychiatry practice, UCS Performance Psych and Testing. The purpose of the Pre-Pro Institute for Sports Psychology is to screen, diagnose, and treat athletes for psychological problems that can be hindering to on-field performance. This helps mentally prepare high school or college athletes for the next level along with assisting athletes in dealing with anxiety, depression, gambling, and substance abuse.



For 13 years, he has been supervising and lecturing medical students while providing mentorship during their rotations at Las Encinas and Huntington Hospitals. He advises medical students on what it is like to run a practice, providing insight on hospital administration, court cases, liabilities, and psychological testing during their rotations.

We are grateful for Dr. Feldman's ongoing contributions to the department, and wish him the utmost success in his new venture with the Pre-Pro Institute!

Dr. Feldman's Psychiatry Office
www.UCSMed.com
(818) 330-8258

Faculty Media Appearance

April Thames, PhD, Associate Professor of Psychology and Psychiatry, appeared on NBC Los Angeles on July 10, 2019 to discuss how racism can make you physically ill.

Here is the link to the segment:

Featured Research



Dr. Lon Schneider's most recent R01 is a 5-year, \$3.5-million award from the National Institute of Aging (NIA) to assess the potential for an extended-release formulation of phenserine to inhibit preprogrammed neuron death in Alzheimer's disease (AD) using a Phase 1b ascending dose platform. Schneider and his co-investigators, Nigel Grieg of the NIA Intramural Research Center in Baltimore, and Clive Ballard at the University of Exeter, UK, will test the delivery of 4 ascending daily doses of phenserine given over 12 weeks in order to establish a safe and tolerated dose. Results in the expected direction will support advancement to a Phase 2 proof of concept trial.

Translation? Schneider and his colleagues are paving the way for a new "neuroprotective" therapy that holds the promise to prevent otherwise doomed neurons from dying in patients with AD. No effective drugs exist to prevent, delay, or effectively treat the 5 million Americans currently diagnosed with AD. With projects totaling 11-16 million Alzheimer sufferers within two decades, the need for effective therapies has never been greater. Phenserine may just be the salve that AD sufferers and their families have been desperately searching for.

But Dr. Schneider is not new to this fight. He has been working to defeat AD for decades. He was PI of the National Institute of Mental Health's seminal CATIE-AD program, a multicenter effectiveness trial of atypical antipsychotics in AD; the companion study to the CATIE schizophrenia program. Currently, he directs the USC California Alzheimer's Disease Center and the USC NIH Alzheimer's Disease Research Center clinical core. Moreover, he is co-PI on three other current R01 awards, including one with Terry Goldberg at Columbia and Phil Harvey at the University of Miami to develop easily administered neuropsychological measures that are resistant to practice effects for use in prevention studies; and another with Richard Kennedy and Gary Cutter at the University of Alabama, Birmingham, using a novel approach to drug repurposing for large-scale data mining or discovery, and then applying the algorithms to concomitant medications of participants in clinical trials to determine the medications that might show efficacy or promise. He has served as a senior scientific advisor to the director of NIMH, on the American Psychiatric Association's Committee for Practice Guidelines in Alzheimer's and Other Dementia, as well as the World Federation of Societies of Biological Psychiatry's Task Force on Dementia. He has been editor-in-chief of *Alzheimer's & Dementia: Translational Research and Clinical Interventions*, and is an associate editor or editorial board member of the *Cochrane Dementia and Cognitive Improvement Group*, *Current Alzheimer Research*, *Alzheimer's & Dementia*, *The Lancet Neurology*, and *Clinical Neuropharmacology*, among others. He has authored a myriad of papers and chapters on AD and related topics, and has disseminated research findings at conferences too many to enumerate.

In summary: Dr. Schneider is a translational scientist par excellence; someone whom patients and their families can rely on to advance science to change the course of AD and improve lives. We congratulate Dr. Schneider on his prominent NIA award, and extend our wishes on successful implementation in the hopes of a brighter future for those suffering from Alzheimer's Disease.

Featured Faculty & Staff Publications

- Briere, J.**, Kwon, O., **Semple, R.**, & Godbout, N. (2019). Recent suicidal ideation and behavior in the general population: The role of depression, post-traumatic stress, and reactive avoidance. *Journal of Nervous & Mental Disease*, 207(5), 320-325.
- Briere, J.** (2019). *Treating risky and compulsive behavior in trauma survivors*. Guilford Press.
- Coba, M.** (2019). Regulatory mechanisms in postsynaptic phosphorylation networks. *Current Opinion in Structural Biology*, 54, 86-94.
- Dossett, E.**, Kiger, H., Munevar, M., Garcia, N., Lane, C., King, P., & Segovia, S. (2018). Creating a culture of health for perinatal women with mental illness: A community-engaged policy and research initiative. *Progress in Community Health Partnerships: Research, Education, and Action*, 12(2), 135-144.
- Featherstone, R.**, **Melnychenko, O.**, & **Siegel, S.** (2018). Mismatch negativity in preclinical models of schizophrenia. *Schizophrenia Research*, 191, 35-42.
- Foxa, K., & **Cahn, B.** (2018). Meditation and the brain in health and disease. In *The Oxford Handbook of Meditation*. Oxford University Press New York, NY.
- Holschneider, D.**, Guo, Y., **Wang, Z.**, Vidal, M., & Scremin, O. (2019). Positive allosteric modulation of cholinergic receptors improves spatial learning after cortical contusion injury in mice. *J of Neurotrauma*, 36, 1-13.
- Kennedy, R., Cutter, G., Fowler, M., & **Schneider, L.** (2018). Association of concomitant use of cholinesterase inhibitors or memantine with cognitive decline in alzheimer clinical trials: A meta-analysis. *JAMA Open Network*, 1(7), e184080.
- Camacho, D., Estrada, E., **Lagomasino, I.**, Aranda MP, & **Green J.** (2018). Descriptions of depression and depression treatment in older Hispanic immigrants in a geriatric collaborative care program. *Aging and Mental Health*, 22(8), 1056-1062.
- Peterson, B.**, Zargarian, A., Peterson, J., Goh, S., Sawardekar, S., Williams, S. & Bansal, R. (2019). Hyperperfusion of frontal white and subcortical gray matter in autism spectrum disorder. *Biological Psychiatry*, 85(7), 584-595.
- Sanchez, A., Sterris, J., & **Shoemaker, E.** (2019). Pediatric patients with behavioral emergencies: Who's coming in and what happens while they're here? *Western Journal of Emergency Medicine*, 20(2), vii.
- Schneider, L.**, Hernandez, G., Zhao, L., Franke, A., Chen, Y., **Pawluczyk, S.**, & Brinton, R. (2019). Safety and feasibility of estrogen receptor- β targeted phytoSERM formulation for menopausal symptoms: Phase 1b/2a randomized clinical trial. *Menopause: Journal of the North American Menopause Society*, 26(8), 1-11.
- Semple, R.** (2019). Yoga and mindfulness for youth with autism spectrum disorder: Review of the current evidence. *Child and Adolescent Mental Health*, 24(1), 12-18.
- Siegel, S.**, & **Featherstone, R.** (2018). Convergence of glutamatergic mechanisms for the generation of high frequency EEG noise. *Biological Psychiatry*, 83(9), S29.
- Spann, M., Monk, C. Scheinost, D., & **Peterson, B.** (2018). Maternal immune activation during the third trimester is associated with neonatal functional connectivity of the salience network and fetal to toddler behavior. *Journal of Neuroscience*, 38(11), 2877-2886.
- Trampush, J.**, Henn, A., Dickinson, D., Berman, K., & Weinberger, D. (2019). Deconstructing simple and choice decision and movement time in psychosis. *Biological Psychiatry*, 85(10), S117.
- Zhang, X., Abdellaoui, A., Rucker, J., de Jong, S., Potash, J., Weissman, M., & **Sobell, J.** (2019). Genome-wide burden of rare short deletions is enriched in Major Depressive Disorder in four cohorts. *Biological Psychiatry*, 85, 1065-1073.

Welcome 2019-2020 Student Counseling & Mental Health Trainees



Sport Psychology Post-Doctoral Fellow

Sonali Wason, PsyD

Azusa Pacific University



Psychology Pre-Doctoral Interns

Rebekah Bartholomew, MA

Azusa Pacific University

Ivan Cabrera, MA

University of Wisconsin

Christa Nelson, MA, M.Ed.

Fuller Seminary Graduate School of Psychology

Naomi Bock, MA

Rosemead School of Psychology, Biola University



Advanced Psychology Practicum Counselors

Meline Mazmanyán, MA

California School of Professional Psychology, Alliant International University

Foujan Kafri, MA

California School of Professional Psychology, Alliant International University

Katherine Robertson, MS

Pacific Graduate School of Psychology, Stanford University

Eva Kram, MMFT

Pepperdine University



Social Work Interns

Sam Naimi

University of Southern California

Nigel Pacheco

University of Southern California

Welcome
2019-2020
Psychiatry Residents



Audrey Chen, MD

Medical School:
Tulane University

Undergraduate:
UC San Diego



Sarah Erdelyan, MD

Medical School:
Tulane University

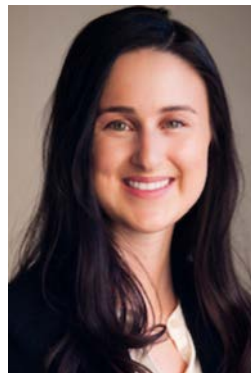
Undergraduate:
University of Wisconsin



David Edberg, MD

MA and Medical School:
Loyola University, Chicago

Undergraduate:
UC Santa Barbara



Roxanne Fries, MD

Medical School:
Keck USC

Undergraduate:
Claremont McKenna



Joshua Eldridge, MD

Medical School:
Baylor College of Medicine

Undergraduate:
Stanford University

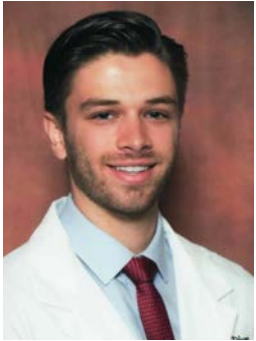


Johanna Keller, MD

Medical School:
University of Oklahoma

Undergraduate:
Columbia University

Welcome
2019-2020
Psychiatry Residents



Bryson Lochte, MD

Medical School:
UC San Diego

Undergraduate:
Dartmouth College



Yasmin Rawlins, MD

Medical School:
Columbia University

Undergraduate:
Harvard University



Kelly Park, MD

Medical School:
Keck USC

Undergraduate:
Pomona College



Rebecca Talkin, MD

Medical School:
Saint Louis University

Undergraduate:
UCLA



Stephanie Rademeyer, MD

Medical School:
University of Arizona Tucson

Undergraduate:
Middlebury College



Jennie Yoo, MD

Medical School:
UC San Francisco

Undergraduate:
Brown University

Welcome
2019-2020
Child & Adolescent Psychiatry Fellows



Emily Ackerman, MD

Residency: Harbor UCLA

Medical School:
UC Irvine School of
Medicine



Roxanne Vasquez, MD

Residency: Harbor UCLA

Medical School:
University of California, Los
Angeles



Aubree Pereyra, MD

Residency: Kaweah
Delta

Medical School:
Ross University School of
Medicine



Joseph Wurbel, DO

Residency: Palm Beach
CGME

Medical School:
Midwestern University,
Arizona



Peyman Tashkandi, DO

Residency: University of
South Alabama

Medical School:
Western University

Welcome
2019-2020
Consultation-Liaison Psychiatry Fellows



Patrick Baumgart, MD

Residency: Oliveview-UCLA
Education Chief Resident

Medical School:
Creighton University School of Medicine



Charles Manchee, MD

Residency: USC/LAC-USC
Outpatient Chief Resident

Medical School:
Saint Louis University School of Medicine

Welcome
2019-2020
Forensic Psychiatry Fellows



Collin Lueck, MD

Residency: USC/LAC+USC

Medical School:

Keck School of Medicine of USC



Torri Montgomery, MD

Residency: Harbor UCLA

Medical School:

University of Arizona



Matthew Motley, MD

Residency: NYU School of Medicine

Medical School:

Albert Einstein College

Congratulations to the 2019 PGY Graduates!

Psychiatry Residency Program

Nora Carson, MD

Los Angeles Department of Mental Health, Downtown

Stephanie Dong, MD

Kaiser Permanent, Montclair

Mira Gracer, MD

Community and Private Practice

Tina Han, MD

UCSF Child & Adolescent Psychiatry Fellowship

Theodore Huzyk, MD

Community and Private Practice

Michael Locher, MD

Ventura County Medical Center

Collin Lueck, MD

USC Forensic Psychiatry Fellowship

Maguerite Maguire, MD

SavantCare, CalPsychiatry, Private Practice

Charles Manchee, MD

USC Consultation-Liaison Psychiatry Fellowship

Caroline Newton, MD

VA Greater Los Angeles/UCLA Addiction Psychiatry Fellowship

Matthew Perdue, MD

Baylor Addiction Psychiatry Fellowship

Beatrice Rabkin, MD

Stanford Consultation-Liaison Psychiatry Fellowship

Jasmin Scott-Hawkins, MD

Harbor UCLA Child & Adolescent Psychiatry Fellowship

Consultation-Liaison Psychiatry Fellowship Program

Mona Mojtahedzadeh, MD

City of Hope Comprehensive Cancer Center

Roberta Zanzonico, MD

West Los Angeles VA Medical Center

Child & Adolescent Psychiatry Fellowship Program

Janet Charoensook, MD

USC/Children's Hospital Los Angeles
Psychiatry and Pediatrics Faculty

Sarah Ghebrendias, MD

USC/LAC+USC Psychiatry Faculty

Tatiana Josic, DO

Los Angeles Department of Mental Health,
Edelman Westside

Emily Ottiniano, DO

Long Beach Asian Pacific Mental Health Program
USC/LAC+USC Psychiatry Faculty

Francine Park, MD

Mind Health Institute, Private Practice
USC/LAC+USC Psychiatry Faculty

Sarah Sicher, MD

Private Practice

Forensic Psychiatry Fellowship Program

Amber Bridges, MD

USC/LAC+USC Psychiatry Faculty
Forensic Private Practice

Aadhar Dhamecha, MD

Metropolitan State Hospital
Forensic Private Practice
USC/LAC+USC Psychiatry Faculty

Sharon Guo, MD

USC/LAC+USC Psychiatry Faculty
Los Angeles Department of Mental Health

Della Martin Appointments

The following appointments have been made possible through a generous donation by the Della Martin Foundation, whose mission is to advance the study and discovery of causes and cures for mental illness.



Appointed as Della Martin Assistant Professor in Psychiatry Joey Trampush, PhD

Dr. Joey Trampush joined the Department on March 1, 2018. He completed his PhD in clinical neuropsychology from the Graduate Center of CUNY, a Predoctoral Internship in clinical pediatric neuropsychology at Henry Ford Hospital, and a Postdoctoral Fellowship in genetics and neuropsychology at NIMH.

He was an Assistant Professor of Psychiatry and Director of the Laboratory of Cognitive Genomics in the Division of Psychiatric Research at Zucker Hillside Hospital in New York prior to coming to USC. He has been PI and lead data analyst of the Cognitive Genomics Consortium (COGENT), and led the expansion of COGENT from an N of 5,000 to 35,000 by building a vast network of collaborations with expert geneticists from around the world and by utilizing publicly available datasets. His recent papers published in high-impact journals – including *Molecular Psychiatry*, *Cell Reports*, *Nature Communications*, and *Nature Genetics* – reflect his ability to pursue and lead groundbreaking genetics research. Dr. Trampush will use the funds from the Della Martin Endowed Professorship to conduct research to advance the study of mental illness and to promote the cause of finding cures therefor. He will work collaboratively with the Della Martin Research Residents and other department faculty on leading clinical research and training related to genetic and biological psychiatry. They will consult, coordinate, and collaborate in their research efforts, thereby creating a critical mass to optimize their potential for making discoveries in understanding the causes of, the treatments of, and the cures for major mental illnesses.

Two early-career psychiatrists named as Della Martin Research Residents

Alexander Chen, MD

Project: "Transcranial Magnetic Stimulation for Treatment Resistant Schizophrenia"

Faculty Mentor: Darrin Lee, MD PhD

Raghu Appasani, MD

Project: "Assessing the Role of Anterior Cingulate Theta Generation as a Mechanism for Mindfulness-Related Antidepressant Efficacy"

Faculty Mentor: Rael Cahn, MD PhD

Staff Milestones

The following staff members celebrated major milestones with USC in 2019

Mary Goodbeer	Project Administrator / Forensic and Child & Adolescent Psychiatry Fellowship Coordinator, 35 years
Gracie Vargas	Secretary II, 25 years
John Danner, LCSW	Clinical Social Worker / Recruitment Coordinator for the Brain Donation Research Program, 15 years
Jennifer Green, LCSW	Senior Clinical Administrative Director, 15 years
Jacqueline Garcia, BA	Home Department Payroll/Personnel Tech, 10 years
Elizabeth Trejo	Project Assistant, 10 Years

Faculty Retirements

The following faculty members retired in 2019

Walter Chameides, MD	Adult Outpatient Clinic (LAC+USC), 58 years
Robert Sitzman, PhD	Adult Outpatient Clinic (LAC+USC), 50 years
Cheryl St. George, RN, MSN	Medical Student Education (KSOM), 18 years

Congratulations and thank you for your tremendous dedication and years of service to the department and to USC!