

MathWorks Automotive Conference 2007
June 19th-20th 2007, Dearborn, USA

JMAAB Vehicle Model Architecture and Two-Way Connection



Hisahiro Ito, Akira Ohata
Toyota Motor Corporation

on behalf of

JMAAB Plant Modeling Working Group

David Sampson
The MathWorks, Ltd

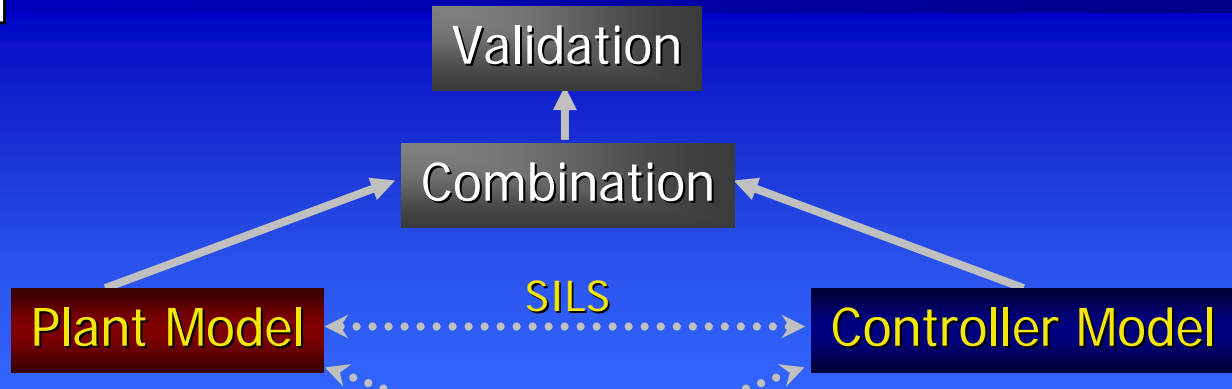
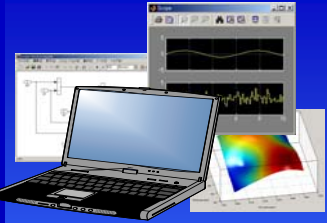
Contents

1. Introduction
2. Two-Way Connection
3. Application – Guidelines & Vehicle Model
4. Future Work
5. Conclusion

Introduction

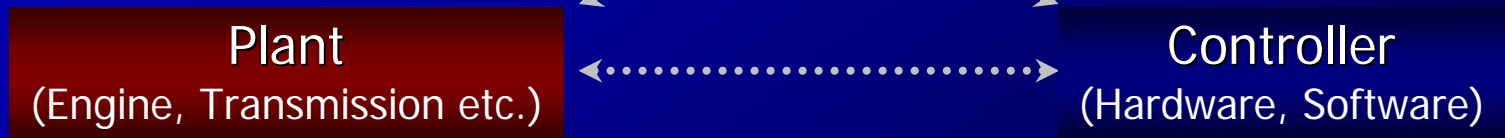
Model Based Development

Virtual World



Rapid Prototype ECU*

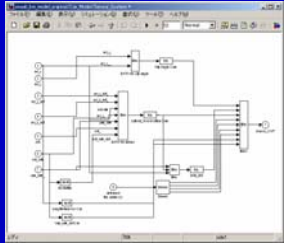
HILS



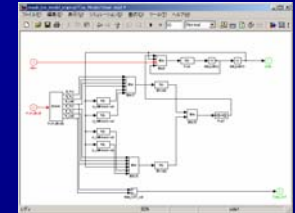
Real World



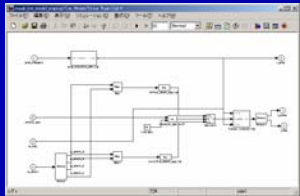
Component Oriented Modeling



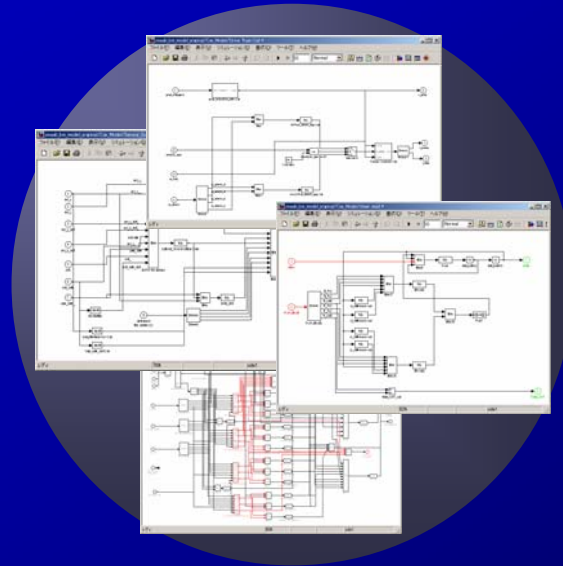
Component A



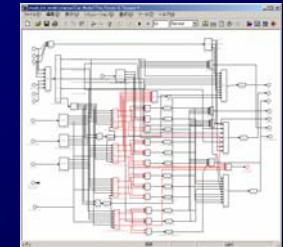
Component C



Component B



A large, complete plant model



Component D

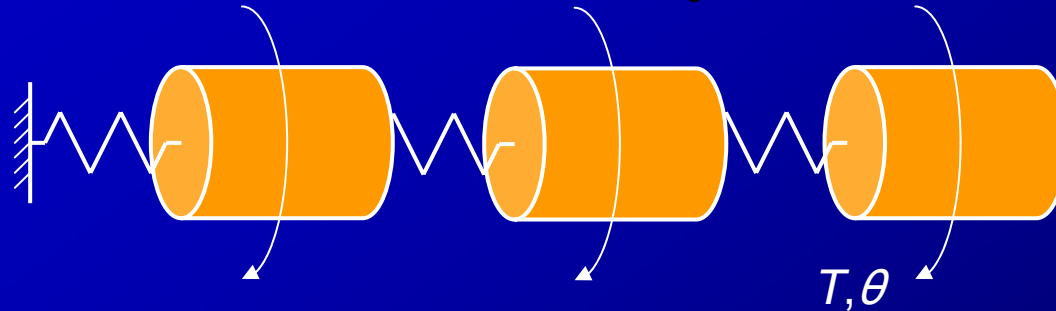
Key Requirements

- partition based on actual parts composition
- standards to enable easy integration

Two-Way Connection

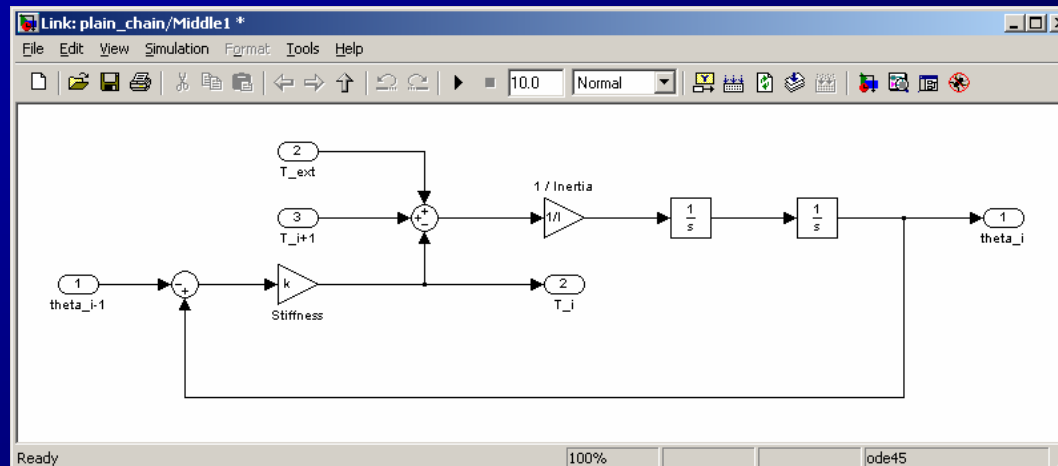
Simple Mechanical System

a schematic of the system

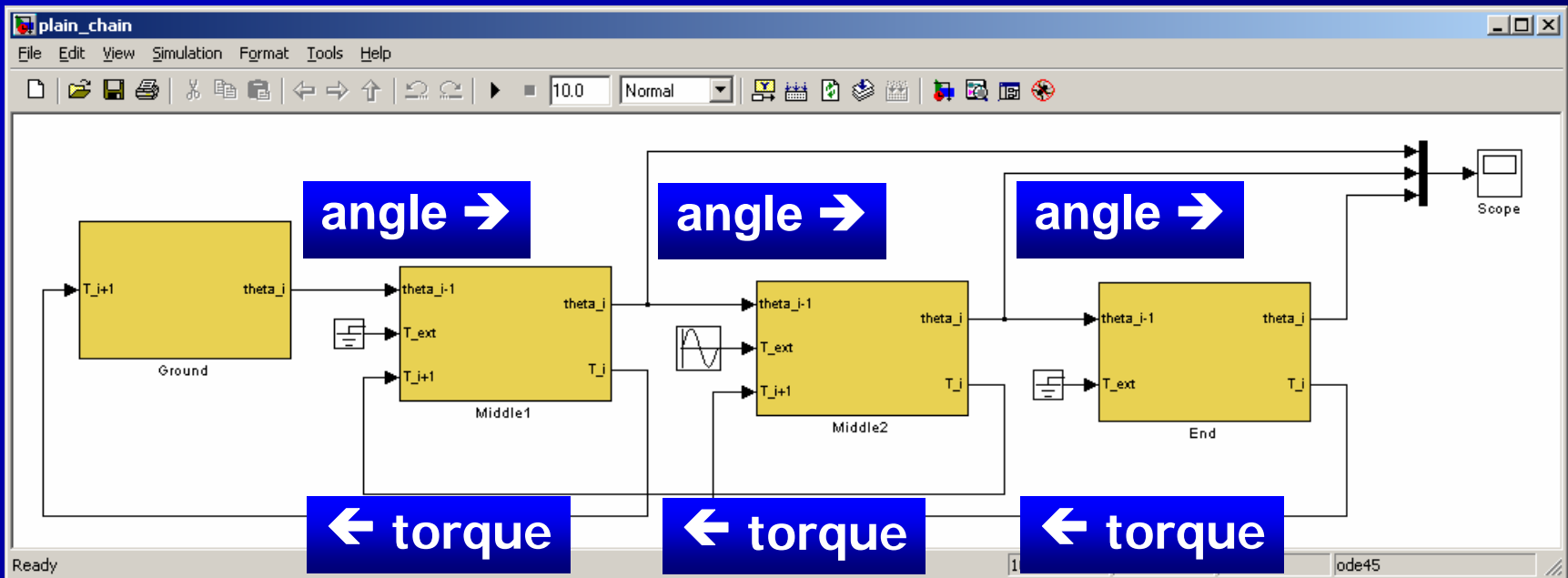
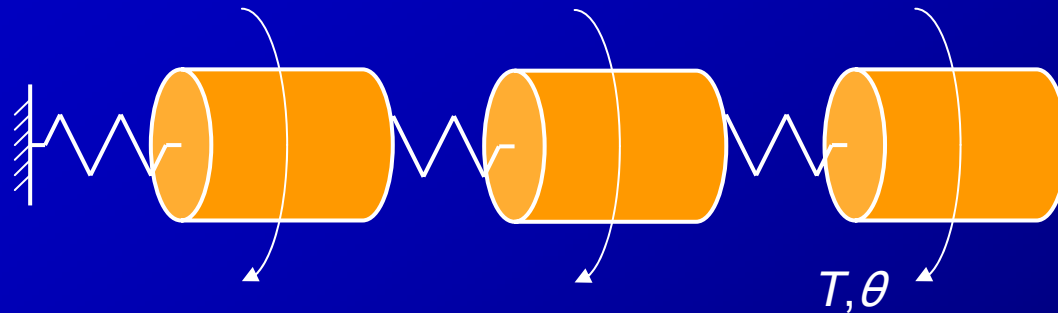


equation of motion for body i

$$T_{ext,i} + k_i(\theta_i - \theta_{i-1}) + k_{i+1}(\theta_{i+1} - \theta_i) = I\ddot{\theta}_i$$

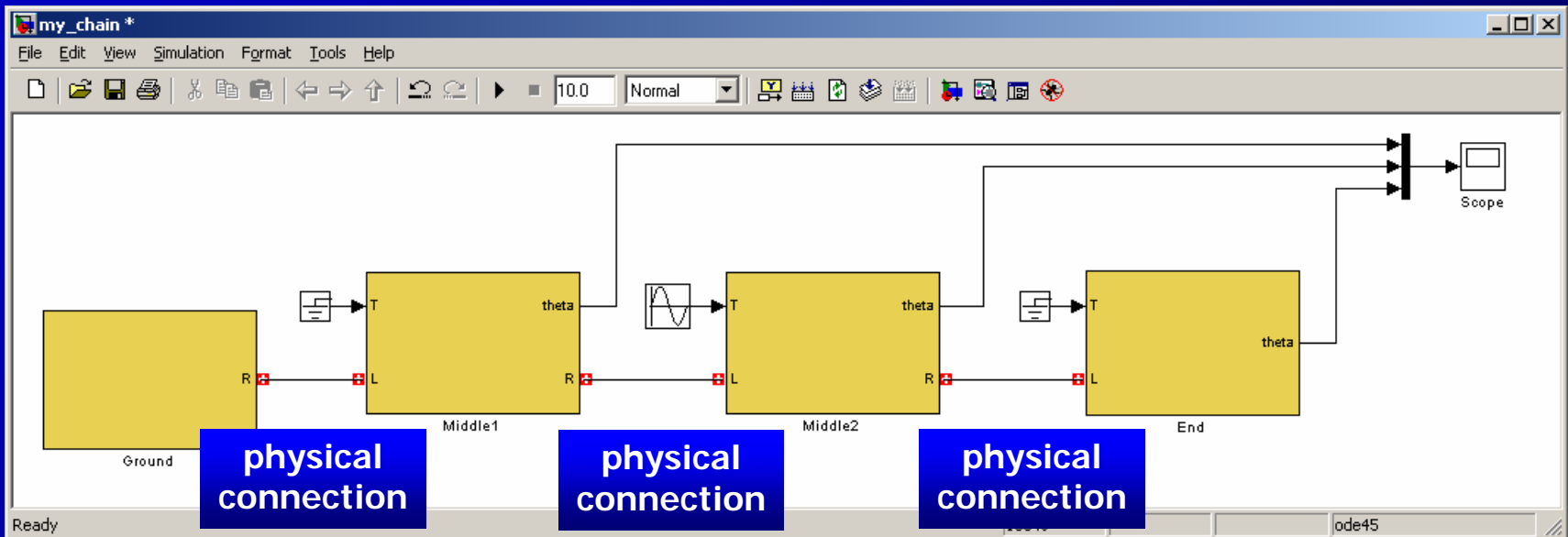
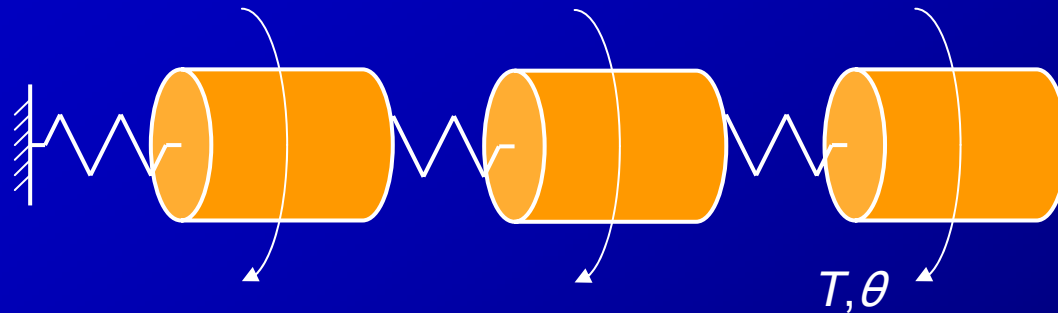


Modeling with *Signal Flows*



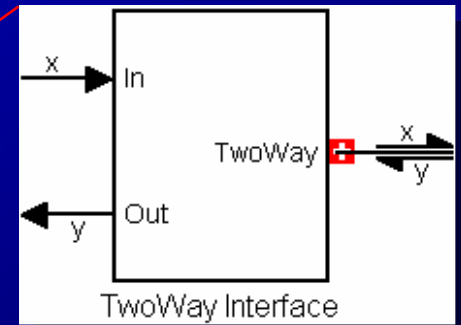
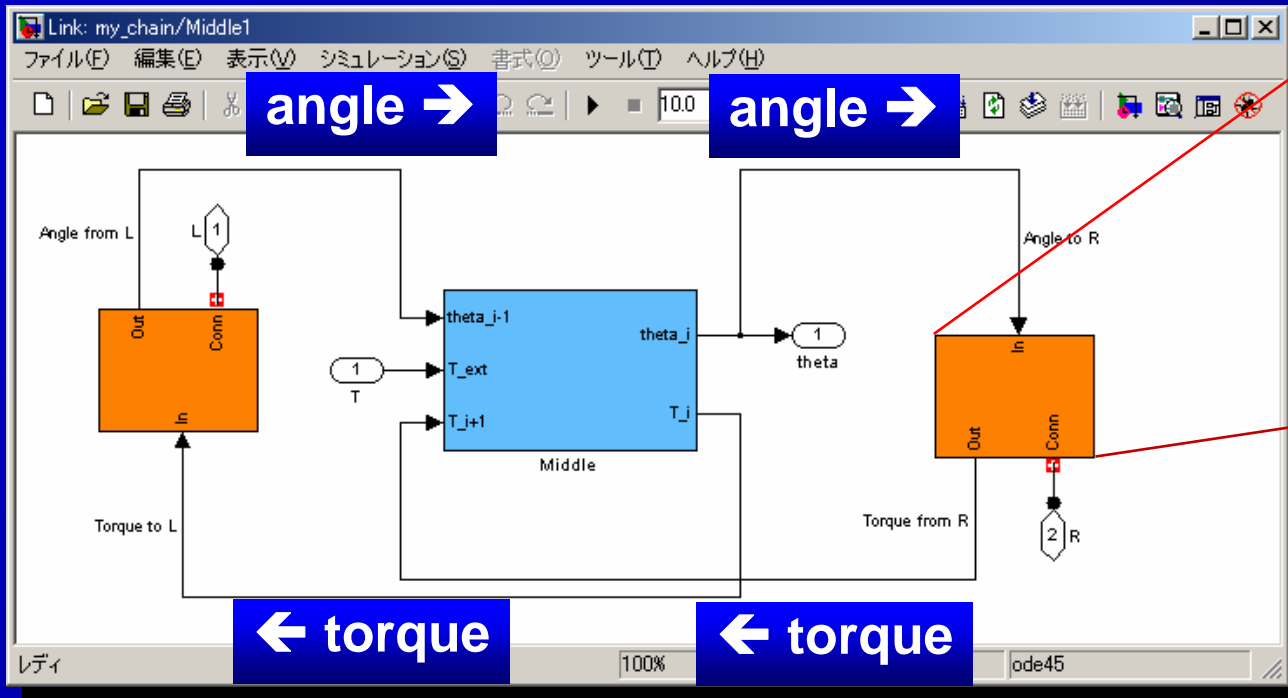
Physical Architecture \neq Model Architecture

Modeling with *Two-Way Connection*



Physical Architecture = Model Architecture
moving towards true *component oriented architecture*

Signal \Leftrightarrow Two-Way Adapter Block



No Change to Numerical Behavior

Two-Way Connection block in R2007a Simscape v1

Application

*JMAAB Style Guidelines
& Vehicle Model Architecture*

JMAAB Plant Model Style Guidelines

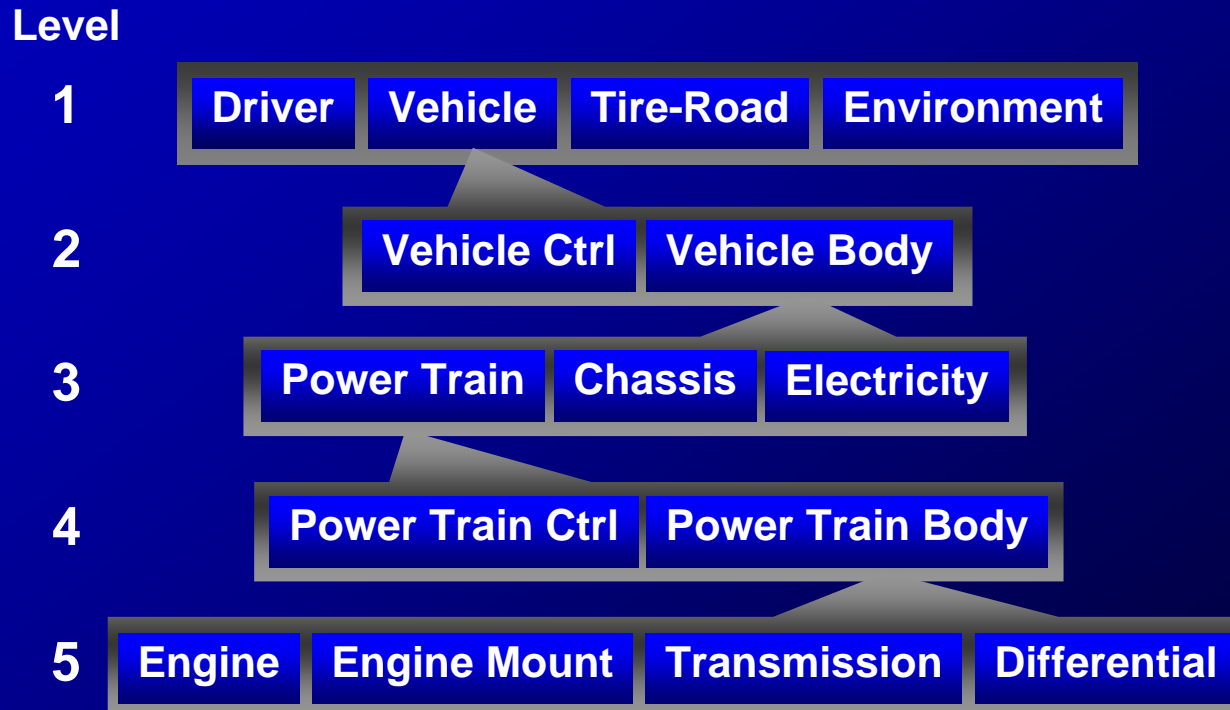
- Component Hierarchy
- Model Implementation
- Methods for Connecting Components
- Integration of Controller and Plant Models
- Use of Data Types
- Use of Coord. Sys., Unit Sys. and Physical Consts
- Methods for Model Parameterization

Vehicle Model Architecture

- Component Hierarchy

vehicle model architecture (template)

subsystem layers & component partitions



Vehicle Model Architecture

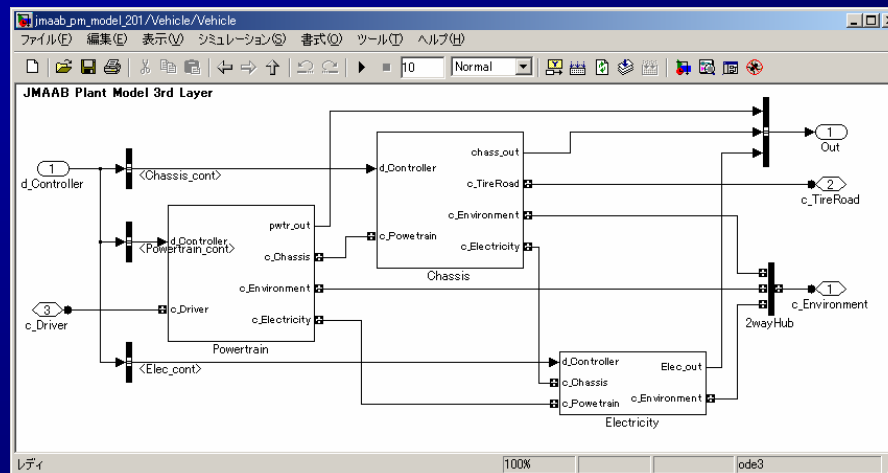
- Model Implementation

general rules for plant modeling in Simulink

prohibited blocks and constructs, use of fonts and colors, etc.

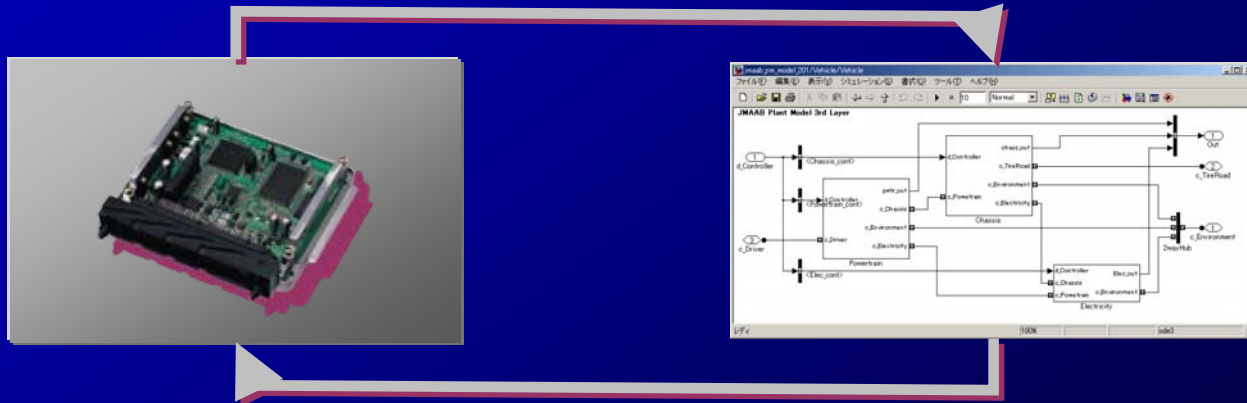
- Methods for Connecting Components

rules for use of signal lines, Goto/From blocks, bus signals for good readability



Guidelines for Closed-Loop Simulation

- Integration of Controller and Plant Models
for use in the hardware-in-the-loop simulation
streamlining of the workflow of closed-loop simulation



Other Guidelines

- Use of Data Types

consistent choice of data types

physical value, logical value, Switch block etc.

- Use of Coord. Sys., Unit Sys. and Physical Consts

standard modeling practices among developers*

*developers can span across OEM and suppliers.

- Methods for Model Parameterization

consistent use of parameters

workspace variables, M-files

Future Work for JMAAB PM-WG

- Further evaluation of the Style Guidelines
with the vehicle model as a working example
- Identification of requirements for Two-Way Connection
from the automobile engineering standpoint
- Benchmark of the vehicle model
to examine the effectiveness of the style guidelines
- Consideration on Data Dictionary for Plant Models
to enable smooth exchange of models

Conclusion

- Component oriented physical modeling
two-way connection in R2007a Simscape
- Common rules for MBD plant modelers
JMAAB Style Guidelines for Plant Models
- Test case in automobile industry
vehicle model architecture

Thanks to...

T. Kubo, K. Nakashima (Aisin AW)

H. Iino, F. Yamazaki (Cybernet)

H. Mori (Denso)

M. Ichinose, H. Ogata (Hitachi)

A. Miyauchi, S. Shimada, K. Tsutsumi (Honda)

Y. Hanamura, M. Nishito (Isuzu)

F. Katsu, T. Matsumura (Jatco)

S. Komori, Y. Shinya (Mazda)

Y. Akemi, M. Yamada (Mitsubishi Electric)

M. Taira (Nissan)

T. Degaki, J. Kako (Toyota)

J. Wendlandt (MathWorks)