



John Deere 41 kW (55 hp) to 59 kW (80 hp) Tractors

The Easy Choice



JOHN DEERE

Meet the newest mid size tractors from John Deere – the 5015 Series. Light in weight but heavy on performance. These tractors feature more horsepower, more comfort, improved reliability, higher efficiency and lower noise levels. And they're built to John Deere quality control standards.

The 5015 Series tractors, with 41 to 59 kW (55 to 80 hp) John Deere PowerTech engines are Tier II certified and comply with current noise and fuel emissions standards.

These tractors also feature a roomier cab with greater visibility to the rear, a self-adjusting wet main drive clutch for smooth engagements and long lasting performance and a choice of five transmissions. The 24F/12R with a Power Reverser and electro-hydraulic Hi-Lo is perfect for front loader work.

The 5015 Series tractors. The easy choice.

NOISE REDUCTION



TRANSPORT PERFORMANCE



SERVICEABILITY



LOADER PACKAGE



For greater comfort and reliab



MODEL	KW/HP	ENGINE
5215	41/55	3-cylinder turbocharged
5315	48/65	3-cylinder turbocharged
5415	53/72	4-cylinder
5515	59/80	4-cylinder turbocharged

ility ... the choice is easy



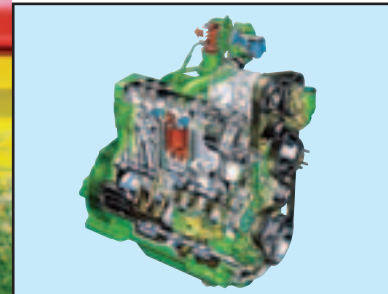
SPACIOUS CAB



24/12 PR TRANSMISSIONS



TIER II POWERTECH ENGINE



LEFT HAND REVERSER



Contents

Cab, Operator Station	4-5
Engine/Transmission Features	6-7
Loaders and Manoeuvrability	8-9
PTO	10-11
Hydraulics and Hitches	12-13
Easy Service and Maintenance	14
Specifications	15

Room with a view – a great view

The 5015 Series cab has a reduced noise level of 78 dB(A). Other operator friendly features include:

- **CURVED REAR GLASS.** The rear glass is curved and without cab corner posts, ensuring a clear view to the rear corners of the tractor.
- **DIGITAL READOUTS.** Digital readouts provide precise monitoring of PTO, engine and travel speeds as well as diagnostics and service reminders.
- **ERGONOMIC CONTROLS.** Redesigned controls offer more ergonomic, intuitive control, making operating efficient and easy.
- **SEAT OPTIONS.** Choose between the “comfort seat” or the “Deluxe air suspension seat” for a higher level of comfort.

Cab design: Easy to operate

- Ergonomic layout of controls
- Low noise level (less than 78 dB(A))
- Great all-round visibility 320°
- Comfort seat options
- Spacious design
- Accurate, electronic hitch control
- Easy access

Four front and two rear integrated working lights let you extend the working day.

Noise reduced cab (78 dB(A)) lets you focus on your work.

Convenient overhead air conditioning option lets you direct air for maximum cooling.

Front loader package and joystick control make loader work quicker and easier.

On units equipped with electro-hydraulic Hi-Lo transmission (see page 7) a strong hand brake in the drop box is offered for higher braking capacity.

Both front and rear windows open for fresh air ventilation.

Telescopic and tiltable steering wheel adjusts for operator comfort and control.

A low cab height of just 2.4 m on 30" tyres provides better cab clearance in low overhead conditions.

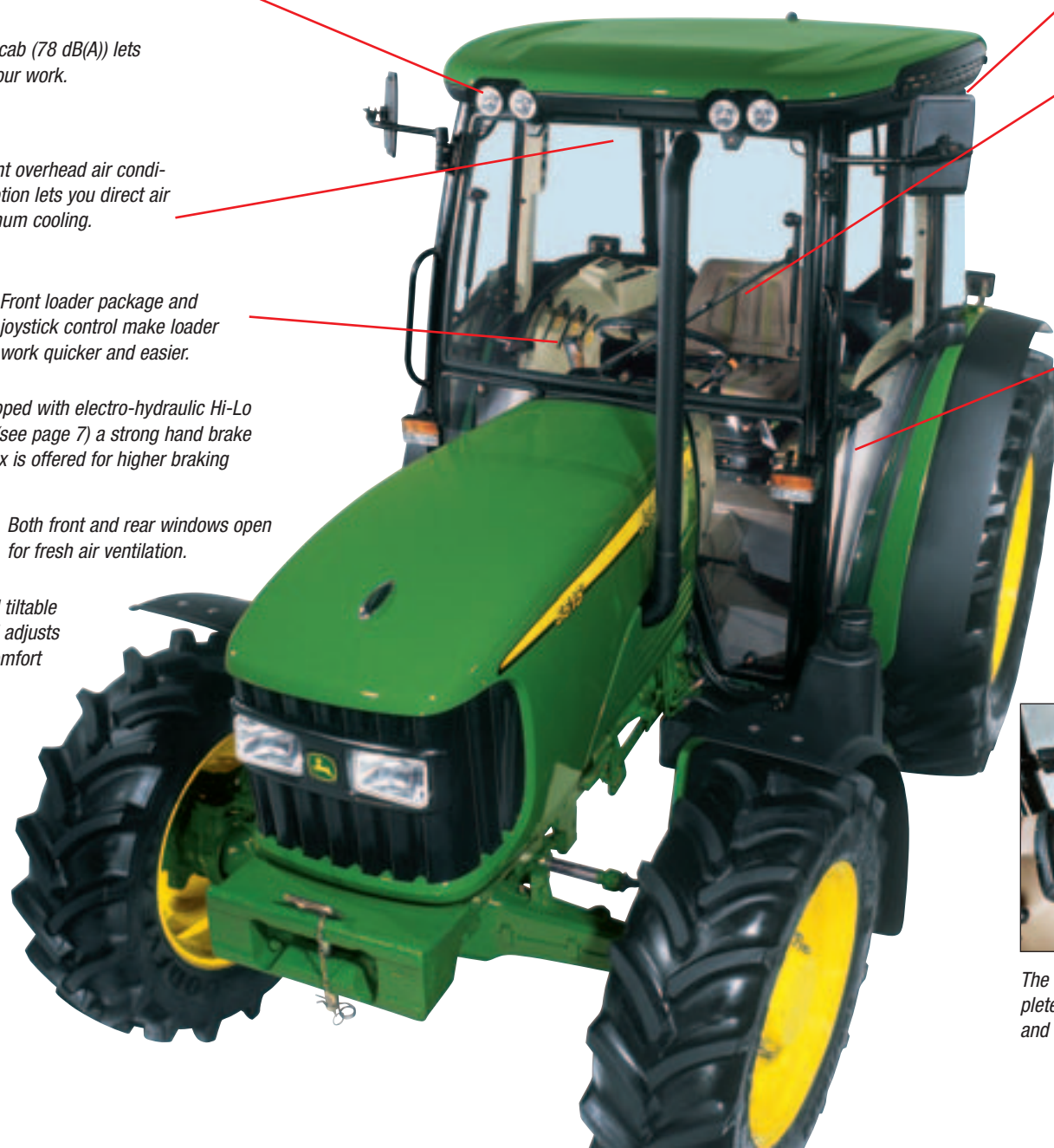
Curved glass without corner posts increases visibility to PTO and implements.

Optional air suspension seat puts you in the right position for all-day comfort.

Power Reverser and a strong wet clutch increase front loader efficiency.

Dual doors offer easy access to the cab from either side.

Relocated fuel tank with greater capacity (up to 96 litres) gives you more time between re-fuelling and provides improved rear visibility.



The 5015 Series tractors feature a complete redesign of controls for easy use and greater comfort.

Quiet and economical

OPEN OPERATOR STATION



The 5015 cab has outstanding visibility all-around, exceptional operator comfort and easy access via right and left hand doors.



The compact size allows operation in tight, low overhead situations. See page 14 for complete dimensions.



Optional electronic hitch, available on all cab models, provides accurate and easy hitch operation.



Experience a high level of comfort and control when you step onto the wider platform of a 5015 Series open operator station. All controls are logically laid out and within easy reach. The platform is wider and uncluttered, with a low tunnel and no levers positioned under or between the operator's legs.

The John Deere PowerTech Tier II engine pushes out plenty of power. With a noise level of below 86 dB(A), and isolated platform with silent block suspension, operating noise is kept to a minimum.



Range and gear lever, rockshaft and SCV controls are located on the operator's right. The PTO engagement and control of the ground drive PTO, are located on the left. All controls are positioned logically for easy reach.



Select either a vertical or horizontal exhaust. The horizontal exhaust (shown above) improves visibility, making this choice ideal for front loader or row crop applications.



The fuel tank filler neck is easily accessible in front of the hood and lets you comfortably refill the tractor.



Choose between a two post, foldable ROPS (Roll Over Protection Structure) or a four post ROPS.

John Deere engines and tran

Look to John Deere for the very latest engine technology, with proven, dependable high torque performance. The 5015 Series tractors are equipped with Tier II certified PowerTech engines, from 41 to 59 kW. With 4.5 litre displacement, the 5415 and 5515 models have the largest engine in this horsepower class. Plus, wet cylinder liners provide longer engine life. Other advantages include:

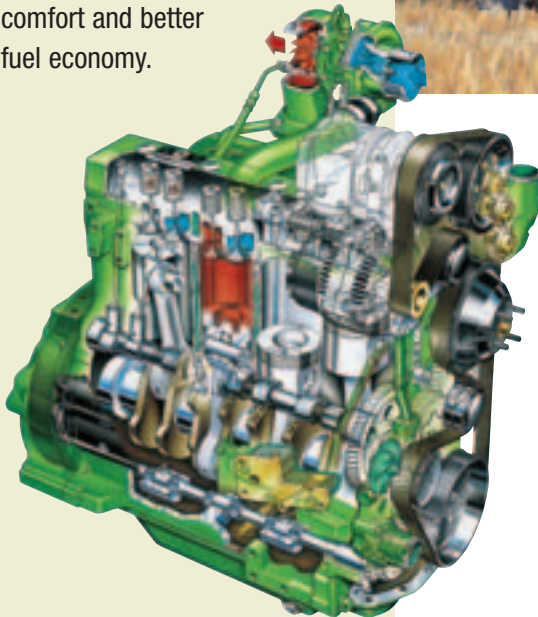
- **Higher torque back-up:** up to 33% for the 3 cylinder and 27% for 4 cylinder models.
- **Higher peak torque:** 5% for 5415 and 6% for 5515 model.
- **2300 rpm rated engine speed** for less noise, more comfort and better fuel economy.

The PTO clutch and traction clutch, while fully independent of each other, are combined into one clutch pack, resulting in more reliable operation.



John Deere PowerTech engines

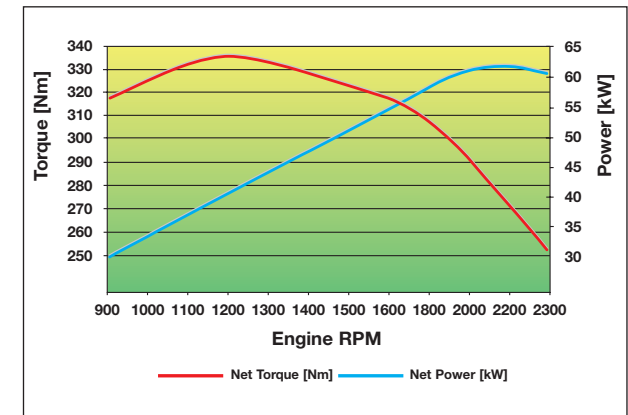
- Largest engine in this class – up to 4.5 litres displacement
- Highly responsive – up to 33% torque back-up
- Reliable wet sleeve piston design
- Choose from five transmission choices
- High transport speed – up to 40 km/h



The proven John Deere PowerTech engine is Tier II compliant whilst maintaining good fuel economy. Our cross-flow cylinder head and unrestricted cool air intake help increase power and fuel efficiency. And larger fuel tanks mean more working time in the field between refills.

Powerful 5015 Series engines provide up to 33% torque rise over a wider range of constant power to pull through tough crop or field conditions without frequent downshifting.

MODEL	KW/HP	TIER II CERTIFIED ENGINE	
5215	41/55	3 cylinder turbocharged	2.9 litre PowerTech
5315	48/65	3 cylinder turbocharged	2.9 litre PowerTech
5415	53/72	4 cylinder naturally aspirated	4.5 litre PowerTech
5515	59/80	4 cylinder turbocharged	4.5 litre PowerTech



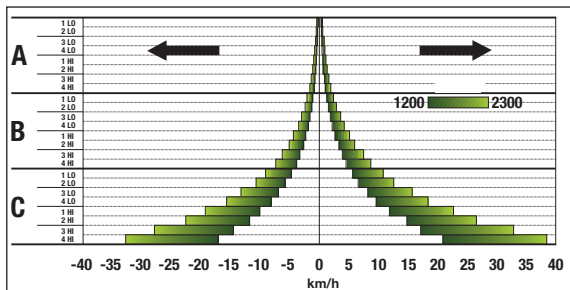
missions keep you moving

TRANSMISSION FEATURES



The 5015 Series tractors are available with a choice of five transmission options to fit the requirements of your operation. The 24F/12R transmission, with the de-clutch button, Power Reverser and electro-hydraulic Hi-Lo is outstanding. This transmission puts F-R shifting at your fingertips with an integrated lever and the de-clutch button on the gear lever that lets you shift the gears without using the clutch pedal. The Power Reverser is a multi-disc wet clutch designed for longer clutch life.

8F/8R	12F/12R	24F/24R	24F/24R	24F/12R
SyncroPlus 2 – 30 km/h clutch	SyncroPlus 1.4 – 30 km/h clutch	SyncroPlus/Mechanical Hi-Lo 0.5 – 40 km/h clutch	Electrohydraulic Hi-Lo 0.5 – 40 km/h Powershifting gears	PowerReverser/Electrohydraulic Hi-Lo 0.5 – 40 km/h Powershifting gears plus gearshifting with de-clutch button



24F/24R speed transmission with the mechanical splitter provides speeds from the creeper range 0.5 km/h up to 40 km/h.



The 24F/12R Power Reverser transmission with a de-clutch button on the gearshift lever allows smooth and easy gear shifting without pressing the foot clutch pedal. 2 additional buttons let the operator control the electro-hydraulic Hi-Lo gear shifting.



The Power Reverser gives you smooth and precise control for maximum productivity during loader operations.



An optional 4WD and toggle switch with electro-hydraulic engagement lets you easily engage four wheel drive on-the-go when needed (available on all transmissions featuring Hi-Lo).



An optional Differential Lock with electro-hydraulic engagement is offered on all EH Hi-Lo transmissions. Once engaged, more torque is transmitted to get more traction to the ground.

5015 Series tractors combine light weight and manoeuvrability with power and heavy duty hydraulic capacity.

With a heavy duty front axle, increased lift capacity (up to 26 kN) and powerful tandem hydraulic pump, the 5015 Series is designed to handle the heaviest loader work. The 24F/12R transmission (optional) with power reverser and wet clutch, 320° of visibility and high reverse speeds make back-and-forth work simple and productive.

The light, manoeuvrable tr



The high value livestock package

- Compact dimensions and lighter weight for improved manoeuvrability.
- Perfect loader tractor – wet clutch and Power Reverser available
- 26 kN lift capacity to handle heavy implements
- Power on demand – up to 60 l/min hydraulic flow
- Electro-hydraulic Hi-Lo for more versatility



The powerful tandem pump delivers all of the hydraulic power you need (up to 60 l/min on the 5415 and 5515), under the toughest working conditions.



Left hand Power Reverser (available in combination with the 24F/12R transmission) gives you smooth and ultimate control and productivity during loader operations.



All loader controls and SCV levers are positioned logically, within easy reach for smooth loader operations.

actor for easier yard work

CLOSE MANOEUVRABILITY

The 5015 Series tractors have a smaller wheelbase. This reduces turning radius by as much as 10%, a big plus when working in confined buildings and yards. And even though the wheelbase is shorter, the operator's area is still spacious and comfortable enabling a full day's work without fatigue.



Wide, open visibility allows the operator to see obstacles or implements in the area of operation.



The compact size allows operation in tight, low overhead situations. See page 14 for complete dimensions.

Optimise your productivity and driving performance with the optional, 2 speed electro-hydraulic Hi-Lo transmission. At the touch of a button, this transmission lets you shift under full load without using the clutch. Ideal when extra pull is needed on a steep hill or when hauling heavy loads, to increase forward speed. You can change speeds as fast as conditions change, making maximum use of your working time.



STRONG, EFFICIENT PTO

In grassland operations, you need a tractor with the power to operate a variety of heavy implements. The 5015 Series tractors are equipped with a strong, high torque, independent PTO. A rear mounted 540/540E PTO is standard equipment. An optional 540/1000 PTO is also available. Both come with ground drive as standard equipment

Units equipped with electro-hydraulic Hi-Lo also feature a servo activation on the PTO lever. A digital readout is available that monitors PTO speed, travel speed and engine speed simultaneously. All controls and features are logically and ergonomically placed within the operator's reach.



In operations such as spraying, where forward speed, engine speed and PTO rpm are vital, the optional digital readout makes all the information available at the same time on the easy to read monitor.



The 5015 tractor is light and manoeuvrable but has plenty of power to operate heavy balers and other equipment such as mowers.



The perfect partner for



grassland operations



The fuel saving economy PTO is ideal for medium and light duty operations. Fuel savings can be significant and lower engine speeds reduce noise and engine wear. The PTO engagement and control of the ground drive PTO are easily accessible on the left hand side.



Spend less time on the road – and more in the field – with transport speeds up to 40 km/h.

IN THE FIELD AND ON THE ROAD

With transport speeds up to 40 km/h and the de-clutch button for quick gear shifting on-the-go, you'll spend less time travelling between fields, for maximum productivity. Because these machines are lighter, soil compaction is kept to a minimum. To ensure safety when you stop on slopes, the 24F/12R or 24F/24R transmission options feature a stronger parking brake

The productive field tractor

- *Lightweight package for reduced compaction*
- *Comfort – ergonomically placed controls*
- *Select 540/540E and 540/1000 with ground drive PTO*
- *Clear, easy to read monitor display*

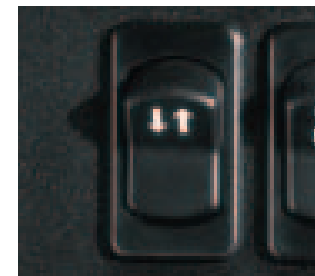
Move faster, work longer

The 5015 Series tractors have the hydraulic flow you need to handle a wide variety of power hungry implements. The 5415 and 5515 have a heavy duty hydraulic pump option (60 litre flow capacity), providing higher flow.

In addition, up to 3 SCVs are available which are perfectly matched to the higher flow of the hydraulic pump. SCV levers in the cab have been repositioned for easier operation. The flow divider option lets you divert hydraulic power to where you need it most, adjusting oil flow between the rockshaft and SCVs.

Hitch power, precision and control

- Heavy duty, Category I and II, 3 point hitch
- Optional quick couplers for fast attachment
- Electronic hitch control available
- Fender mounted 3 point hitch controls available



Switch the full hydraulic power to the rockshaft at the end of the row or to the SCVs when facing a new row with the touch of a finger.



Up to three selective control valves, including floating feature, make it easy to operate various rear mounted implements simultaneously.

Change equipment fast

HITCHES



Optional quick couplers enable you to hook up implements quickly and easily from the operator's seat.



The optional pick-up hitch gives you an excellent view of the hook for easy coupling.



Rear SCVs deliver consistent flow for improved implement performance.



The heavy duty 3 point hitch lets you work with category II or I implements and lifts up to 26 kN throughout the whole lift range.



Seven position, height adjustable wagon hitch combined with drawbar makes hook-ups quick and easy.



The electrical remote control (optional) for the 3 point hitch is mounted on the left fender.

Servicing is simple



Servicing is easy. Lift the one-piece hood with integrated gas springs. Side panels remove for even greater access.

Even checking and changing the air filter is easy! It's located right up front. No special tools are needed to remove and replace the filter core.



Easy serviceability makes this tractor easy to own:

- Easy engine access with one-piece hood
- No special tools are needed for filter changes
- Easy to check service points
- Fill fuel tank from the ground
- Removable side panels



Checking oil levels is easy, too. The hydraulic and transmission oil fill and dipstick are located near the hitch in an easy to reach position.



The fuel port is easy to access from ground level. Extra large 96 litre fuel tanks on the 4 cylinder and 80 litre on the 3 cylinder models allow you to run longer between refills.

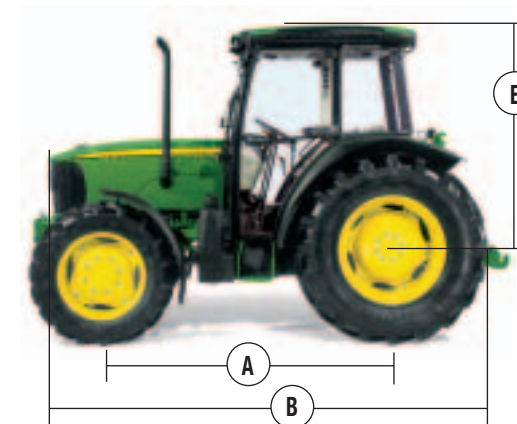


The relocated battery puts it within easy reach.



All open station models feature a covered fuse box to protect against water and dust.

Specifications



DIMENSIONS

(with 16.9-R30 Rear Tyres)

A STANDARD WHEELBASE (mm) 2WD
4WD

B OVERALL LENGTH (mm)
Without base weights

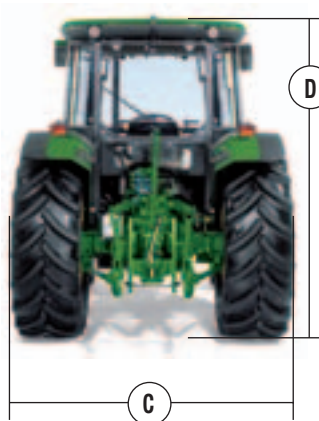
C OVERALL MIN. WIDTH (mm)

D HEIGHT CLRA TO TOP OF 2 POST ROPS (mm)

D HEIGHT CLRA TO TOP OF 4 POST ROPS (mm)

E HEIGHT CLRA TO TOP OF CAB, mm

and dimensions*



5215	5315	5415	5515
1870	1870	2000	2000
2050	2050	2178	2178
3620	3620	3850	3850
1670	1670	1670	1670
2055	2055	2055	2055
1655	1655	1655	1655
1705	1705	1705	1705

MODEL	5215	5315	5415	5515
ENGINE				
Engine Power (ECE R-24)	40.5 kW (55 hp)	48 kW (65 hp)	53 kW (72 hp)	59 kW (80 hp)
Engine Power (97/68/EC)	41 kW (56 hp)	49 kW (66.5 hp)	54.5 kW (74 hp)	60.5 kW (82 hp)
Engine rated speed	2300	2300	2300	2300
Number of Cylinders	3	3	4	4
Aspiration	Turbo	Turbo	Natural	Turbo
Displacement	2940 ccm	2940 ccm	4525 ccm	4525 ccm
Torque Reserve	33%	22%	22%	27%
Fuel Tank Capacity	80 litres	80 litres	96 litres	96 litres
TRANSMISSION				
Number of Speeds, 30 km/h (E/R)	8/8 or 12/12	8/8 or 12/12	12/12	12/12
Number of Speeds, 40 km/h	24/24 or 24/12	24/24 or 24/12	24/24 or 24/12	24/24 or 24/12
Integrated Reverser	Standard	Standard	Standard	Standard
Creeper Range, with 24/24 transmission	0.5 – 2.0 km/h	0.5 – 2.0 km/h	0.5 – 2.0 km/h	0.5 – 2.0 km/h
2 speed electro-hydraulic Hi-Lo	Optional for 40 km/h transmission
Clutch Diameter	280 mm	280 mm	280 mm	280 mm
HYDRAULICS				
Pump Capacity,				
Standard Pump I / II	41.4 / 24.6 l/min	41.4 / 24.6 l/min	46.9 / 24.6 l/min	46.9 / 24.6 l/min
Optional High Capacity Pump I / II	–	–	59.6 / 24.6 l/min	59.6 / 24.6 l/min
Max. Pump Pressure	190 bar	190 bar	190 bar	190 bar
No. of SCVs/Type	Up to 3 single/double acting	Up to 3 single/double acting	Up to 3 single/double acting	Up to 3 single/double acting
3 POINT HITCH				
Category	II/I	II/I	II/I	I/II
Lift Capacity throughout Lift Range	24 kN	24 kN	26 kN	26 kN
STEERING & BRAKES				
Steering Type	Hydrostatic	Hydrostatic	Hydrostatic	Hydrostatic
Brake Type	Oil cooled, disc	Oil cooled, disc	Oil cooled, disc	Oil cooled, disc
PTO				
540/540E	Standard	Standard	Standard	Standard
540/1000	Optional	Optional	Optional	Optional
Ground Drive PTO	Base equipment	Base equipment	Base equipment	Base equipment
ELECTRICAL SYSTEM				
Alternator, Open Station	40 A	40 A	40 A	40 A
Alternator, Cab	60 A	60 A	65 A	65 A
Battery	12 V/100 AH	12 V/100 AH	12 V/100 AH	12 V/100 AH
SHIPPING WEIGHT				
2WD	2300 – 3000 kg	2300 – 3000 kg	2600 – 3100 kg	2600 – 3100 kg
4WD	2500 – 3100 kg	2500 – 3100 kg	2900 – 3200 kg	2800 – 3200 kg

* Specifications and design subject to change without notice.

A tradition of trust

Your John Deere dealer provides two things that you don't have to worry about – Genuine John Deere parts and Genuine John Deere service. He supplies a wide variety of parts – including rare out of stock items – to ensure maximum uptime. Genuine John Deere Parts are the best way to properly maintain the high performance that you demand.

As for service, your dealer only employs John Deere trained service technicians who do the job right the first time.

So, when it comes to parts and service, always trust John Deere.



John Deere trained service technicians can meet you on-site with the tools and parts needed to keep downtime to a minimum.



You know that repairs and maintenance will be done right the first time by experienced, John Deere trained service technicians.



“Take the credit for buying the best”

John Deere Credit – A range of financing options as powerful as our products. Contact your John Deere dealer for a comprehensive range of finance options to suit the specific needs of your business.

Not available in all countries please consult your local dealer.



Keep your equipment up and running for years with Genuine John Deere Parts.



The air filter for the cab is easily accessible, positioned in the side of the cab roof, away from the heaviest dust.

This literature has been compiled for worldwide circulation. While general information, pictures and descriptions are provided, some illustrations and text may include finance, credit, insurance, product options and accessories NOT AVAILABLE in all regions. PLEASE CONTACT YOUR LOCAL DEALER FOR DETAILS. John Deere reserves the right to change specification and design of products described in this literature without notice. John Deere's green and yellow colour scheme, the leaping deer symbol and JOHN DEERE are trademarks of Deere & Company.



RELIABILITY IS OUR STRENGTH

www.johndeere.co.uk
www.JohnDeereEurope.com
www.johndeere.co.za
www.deere.com.au