

January 2019

NEW CONSTRUCTION

Products

**John Deere Upgrades
Compact Wheel Loader
Line with New
244L & 324L
Models**



5 Steps to
Winterize Your
Home for Comfort
& Energy Savings

CLYDESDALE

SKID BASE SELF-ERECTING PORTABLE CONCRETE BATCH PLANT



Improve the quality and efficiency of your mobile batch plant operations with the new Stephens Clydesdale skid base system. Specially designed features reduce the typical installation and operating costs and help increase your margins. You can count on Stephens for the highest quality equipment, service & support.

- Highly Portable 14' Travel Height
- Concrete Foundation May Not be Required, Consult Local Engineer
- No Crane
- Up to 200 cy/hr
- Hydraulic Self-Erect



Stephens CONCRETE EQUIPMENT

Why buy a Stephens?

- Owned by the Stephens Family since 1957
- Honest, reliable, second-to-none sales & service
- In-house CNC Machine Shop
- Simple and easy to service & maintain
- Standard, off the shelf parts

Stephens Manufacturing
P.O. Box 488
Tompkinsville, KY 42167 USA

USA Phone: (800) 626-0200
International Phone: (270) 487-6774
Fax: (270) 487-8368

Website: www.stephensmfg.com
Email: info@stephensmfg.com

Visit Us On Social Media!



EFFICIENCY PRODUCTION

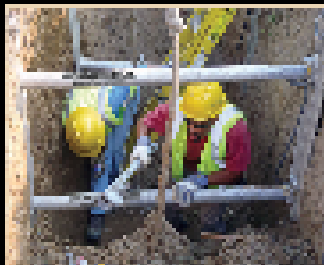
America's Trench Box Builder™

Utility Contractor's Choice for Trench Shielding & Shoring

- Largest selection of shielding and shoring equipment available.
- Custom shields built to your specs.
- Site-Specific Engineering.
- OSHA Trench Safety Training.
- Jobsite Installation Assistance
- Efficiency Production knows that our success is based on your success!



Steel Trench Shields



Hydraulic Shores



Build-A-Box



Aluminum Shields™



Stone Mixer™

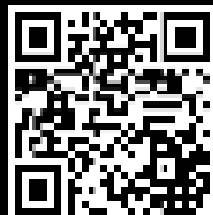


Slide Rail System

800-552-8800

www.encyproduction.com

685 Hull Rd., Mason, MI 48854



EFFICIENCY
PRODUCTION
America's Trench Box Builder™

PG 4 Felling's Triple Reel Trailer is Cooperative's Cable Deployment Solution

PG 10 John Deere Upgrades Compact Wheel Loader Line with New 244L and 324L Models

PG 14 Mobile Dust Suppression Design Features Tier IV Final Gen Set

PG 22 5 Steps to Winterize Your Home for Comfort & Energy Savings

PG 28 Ad Index



Pg 14



Vol. 19 Issue 1

PUBLISHER
Glen Hobson
205-441-5591
glen@tipsmag.net

ASSOCIATE PUBLISHER
Bart Beason
205-624-2180
bart@theutilitysource.net

ACCOUNT EXECUTIVE
Brian Lockheart
205-593-1508
205-624-2183
brian@cjspanishing.com

EDITOR
Brandon Greenhill
brandon@newconstructionproducts.com

ASSOCIATE EDITOR
Steven Hobson
steven@tipsmag.net

CREATIVE/ WEB DIRECTOR
Jacklyn Greenhill
jacklyn@newconstructionproducts.com



Executive and Advertising Offices

PO Box 1568

Pelham, AL 35124

phone: 205-441-5591 fax: 205-624-2185

www.newconstructionproducts.com

glen@tipsmag.net

New Construction Products™ is published twelve times a year on a monthly basis by CJS Media, 951 1st Ave. W. Alabaster, AL 35007 USA. New Construction Products™ is distributed free to qualified subscribers. Non-qualified subscription rates are \$57.00 per year in the U.S. and Canada and \$84.00 per year for foreign subscribers (surface mail). U.S. Postage paid at Birmingham, Alabama and additional mailing offices.

New Construction Products™ is distributed to qualified owners and managers in the construction industry. Publisher is not liable for all content (including editorial and illustrations provided by advertisers) of advertisements published and does not accept responsibility for any claims made against the publisher. It is the advertiser's or agency's responsibility to obtain appropriate releases on any item or individuals pictured in an advertisement. Reproduction of this magazine in whole or in part is prohibited without prior written permission from the publisher.

POSTMASTER: Send address changes to
CJS Media, P.O. Box 1568
Pelham, AL 35124
PRINTED IN THE USA

ASI

Atlantic Screen & Mfg., Inc.

- Well Rehab. Products
- Manholes
- Bentonite
- Filter Sock
- Inline Chemical Mixers
- Sampling Ballers
- Clear PVC Pipe
- Locking Caps

Manufacturers of Slotted & Perforated Pipe ranging from 1/2" to 24" in diameter

302-684-3197

FAX 302-684-0643

142 Broadkill Rd. • Milton, DE 19968

www.atlantic-screen.com

email: atlantic@ce.net

MULTIVIBE[®]

Quality

**New
Product**

**Never Worry
About Gas Engine Problems Again
Just Have Your Batteries Charged**



**Screed Using A
Battery Powered Drill**

**Use Up To 12' Screed Board
Perfect For Smaller Jobs
No Emission Problems**

Drill Tested & Recommended Dewalt DC996 Hammer

Contact Your Local Multivibe Dealer or Call 1-877-220-6652 For More Information

3125 N Friendship Rd Paducah KY 42001

Felling's Triple Reel Trailer is Cooperative's Cable Deployment Solution



In 2003 an Electric Cooperative company, based out of southern Minnesota was looking for an alternative trailer supplier that was locally based. Having heard of Felling Trailers, the Co-op made the call and was put in touch with Laurie Engle, one of Felling's Trailer Sales Consultants. At that time Felling had been building cable reel trailers for about ten years and was considered relatively new to the utility industry. Laurie worked with the Cooperative to configure a triple reel trailer to meet their company's needs, which was the start of a 15-year partnership. "Laurie treated me well and has been nothing short of fabulous since the day we first talked," said the Operations Manager for the Coop.

The cable reel trailer that started the partnership was retired from service, the Cooperative placed the new unit, an FT-30-3 Triple Reel, in service in early 2018. The cooperative currently has five Felling cable reel trailers in service, with varying features and capacities.

A few of the features that were incorporated into the build of the FT-30-3 Triple Reel were selected to increase time efficiency and worker safety.

ROME

Manufacturing Heavy Duty Construction and Agricultural Implements Since 1932

ROME PLOW COMPANY IMPLEMENTS



The ROME brand name has always been tied to heavy duty Construction and Agricultural disc plows.

ROME continues to manufacture the same style of implements that has made the ROME PLOW brand name famous for over 80 years.



ROME also manufactures pivot dump and ejector scrapers for the AG and Construction Industries.

This includes a full line of Earth Moving Scrapers and precision land levelers, such as land planes and float planes.



For more information on our products or for the closest authorized ROME dealer please contact us.

770-748-4450
www.romeplow.com



- A-frame reel stands: the trailer is equipped with three bolt-on reel stands. The design of the reel stands provides accessibility for the operators to load cable reels by use of a forklift vs. loading with a boom truck. The versatility to

load reels this way saves the operator time and reduces safety risks. A bonus with the reel stands being bolt on; they can be moved when there is a need to adjust the tongue load, ensuring proper weight distribution when towing.

- Custom air tank: the large air tank is located in the hitch with a pressure gauge, shut off valve, and airline for the operation of the air brake system. "It is common for the Cooperative to deliver the reel trailer to job sites loaded with cable so that the contractors can start boring the cable underground before the Cooperative's Crew is needed on site. However, where the trailer is left on the job site isn't always where the contractor needs it to be for the boring and without an air brake equipped truck moving the trailer would be more like dragging the trailer," said the Operations Manager. The air tank feature provides the necessary air pressure for operation of the air brake system allowing the trailer to be moved to the needed location on the job site.

Low-Dust Application of Stabilization Materials

Fast, Accurate and Consistent!



Sizes from 8 to 27 Tons

Truck Mounted



Pull-Type



Custom Sizes

- Spreads all dry binding agents accurately
- Spread rates up to 120 lb/sq. yd.
- Available in manual or automatic rate control with Stoltz Controller

Used for Soil Stabilization, Cold In-Place Recycling, Full Depth Reclamation, and similar construction processes, Site Spreaders feature a rugged, fully welded design, 30" inch conveyor, and either automatic or manual controls.



1-800-843-8731
Get all the details you need at www.stoltzspreaders.com

- Catwalk: As with the majority of electric cooperatives, the spring and fall of the year are the coop's busiest times. With these times of year comes a variance of weather extremes, especially in Minnesota. It is not out of the ordinary to have ice and snow in late May or in early October. The varying weather and working conditions played a strong

A STRONG LINE FOR CLEARING LINES



24" diameter saw with a maximum cutting height of 75'



Mulcher models ranging from 99-416 HP

Easily clear vegetation from around power lines and utility poles with our Aerial Trimmer and complete line of Forestry Mulchers and Hydra-Stumpers. With a wealth of Rayco-exclusive features, our machines are built strong for high production, reliability, safety, and operator comfort and control.

Available for SALE or RENT.

Call us at 800.392.2686 or visit us at www.raycomfg.com to locate an authorized dealer near you.



CALL - 800.392.2686 VISIT - RAYCOMFG.COM

factor in the construction of the FT-30-3 Triple Reel's catwalk feature. The catwalk runs the length of the trailer from headboard to fender and then from fender to tailboard. Constructed with grip strut with an approximate width

of 10", bracing then runs underneath with a rear lip to prevent fall through.

- Safety & Stability: additional features that were selected for this trailer were (2) rear pull pin stabilizer legs and rubber wheel chocks. When

deployed these two features work together to maintain the stability of the trailer and the integrity of the load.

The FT-30-3 Triple Reel trailers are used to haul large underground cable from job to job, but these units only represent a few of the Felling trailers that the coop has in its fleet. "Our fleet consists of 35 trailers, 20 of these are Felling trailers. The capacity and function of the trailers range from dump boxes (hydraulic dump trailers), to cable trailers and flatbeds (both drop deck and deck over). The dump boxes are used to haul dirt and sand to and from job sites. We also use them to haul logs and tree debris when we are trimming trees. The newest update to our drop deck trailers is to galvanize them. They are out quite a bit in the winter hauling our mini excavators to and from job sites, the galvanizing will help them last longer in dealing with the winter elements," said the Operations Manager. "These trailers help the work run smoothly. They are good, well-built trailers, they work great for us."

www.felling.com •

Material Handling Equipment

Your One Source For All Your Material Handling Needs

- Storage Products (Steel Cabinets, Shelving & Lockers)
- Loading Dock Equipment
- Conveyors
- Pallet Racks
- Mezzanines
- Carts & Trucks
- Containers & Bins
- Safety Equipment
- Drum Handling Equipment
- Hoppers
- Wire Partitions
- Lift Tables
- In-Plant Buildings
- Cranes (Jib & Bridge)
- Hoists & Trolleys



1-800-239-3434



WAREHOUSE EQUIPMENT AND SUPPLY CO.®

116 West Park Drive • P.O. Box 19808
Birmingham, AL 35218

Email: sales@warehouseequipment.com
Web: www.warehouseequipment.com

DRIVEN TO DELIVER

THE CONSOLE X



- Clean up those cabs and get your fleet organized!

Your Total Mobile Office Solution

The Truck Console-X combines your Laptop Work Station, Radios, Speakers, Cables, Storage and Cup Holders. No Drill Installation Brackets included.

The **Truck Console-X** is the latest innovative mobile office solution to join the Mobile Desk brand family of products. This complete control, communication and convenience Utility Truck Console is becoming the new standard for fleets of all sizes. The design of the **Truck Console-X** has originated from our years of experience working directly with the linemen, supervisors, communicators, and fleets of some of the most notable utility companies in America. Loaded with standard and optional features that maximizes ergonomics, productivity, and fleet/telecom standards into one Mobile Office Solution.



Screen Out SCREEN-DISABLER™

Blanks your screen while you drive!

Our Patented Screen Out App **Stops Texting** while driving for all employees on all tablets, laptops and smart phones that run Windows, iOS or Android Operating Systems. *It's that easy!*

877-663-3375 Ext 303. www.screenout.net

Find us on:



1-877-663-3375
www.mobiledesk.com

John Deere Upgrades Compact Wheel Loader Line with New 244L and 324L Models



Offering operators increased productivity and significantly faster travel speeds, John Deere redesigned its K-Series compact wheel loader models with the introduction of the 244L and 324L compact wheel loaders. Ideal for landscape/snow removal, ag material handling and construction tasks, the new models round out the full line of L-Series compact wheel loaders available from John Deere.

"Our next generation of compact wheel loaders was designed to meet the needs of industry professionals who are demanding higher performance from their machines," said Drew Miller, product marketing manager, compact wheel loaders, John Deere Construction & Forestry. "Tailor-made for tight spaces, the 244L and 324L use our

proprietary Articulation Plus™ system to provide greater stability and yield more lifting power while turning tighter."

The industry-exclusive Articulation Plus™ steering system on the 244L and 324L provides operators an unparalleled combination of lift capacity and maneuverability. This feature includes an articulated frame plus rear-wheel steer, providing excellent full-turn tip load and stability with a tight turning radius.

Newly optimized linkage provides improved parallel lifting, with only 6 degrees of rollback. The 244L achieves an 8-foot, 3-inch (2,520 mm) full-lift dump height and a full-turn tip load of 8,157 lbs. (3,700 kg), while the 324L



You'll never see it coming.

One second can change everything - especially where arc flash is concerned. That's why it's critical to understand the proper selection and use of PPE tested to withstand an arc flash event. To learn more about arc-rated PPE solutions from MSA or request a FREE, no obligation safety evaluation, visit MSAsafety.com/safetyevaluation.

WE KNOW WHAT'S AT STAKE.

© MSA 2018 • ID 55 6060-MCP

MSA
The Safety Company

WE HAVE THE ROPE TO GET THE JOB DONE.



with high lift reaches a 10 foot, 3-inch (3,130 mm) height; and standard lift is capable of a full-turn top load of 9,766 lbs. (4,430 mm).

To increase productivity, the new models allow operators to move faster without having to manually shift the machine. A smooth auto shift hydrostatic transmission is coupled with an automatic two-speed gearbox, which provides a faster travel speed of up to 23 mph — a 21 percent increase in speed over the K-Series models. Both models are equipped with 73-horsepower (54 kW) Final Tier 4 engines.

Knowing a comfortable operator is a productive operator, the 244L and 324L models offer a redesigned cab. An optional air ride, high-back operator seat ensures a smooth ride. Better visibility to the loader arm and bucket, and interior layout of the switches and gauges improves overall efficiency.

For greater uptime, a rear enclosure provides better debris management, while a revamped cooling package improves air flow. This is ideal for tasks that require longer run times in high air-borne debris applications, like agriculture and light material handling.

To keep operating costs at a minimum, rim pull control extends tire life by allowing customers to adjust the torque of the machine to the conditions of their job sites, saving tire and drive line life. Additionally, optional JDLink™ telematics provides real-time data and health prognostics to suggest maintenance solutions that decrease costly downtime. Remote diagnostics enable a dealer to read codes, record performance data and even update software without a trip to the job site.

Contractors looking to get the most versatility out of their machine can leverage over 100 John Deere Worksite Pro™ attachments. These new models are also backed by the John Deere full machine standard warranty, which promises to fix any defects in materials or workmanship for two years after delivery or 2,000 hours — whichever comes first.

www.JohnDeere.com •



Buccaneer Rope
COMPANY

800-358-7673

www.bucrope.com

REDUCE > REUSE > RECYCLE



ONE SYSTEM, MANY APPLICATION AREAS

-  ROAD WORK
-  DEMOLITION
-  RECYCLING
-  QUARRIES AND MINES
-  URBAN JOB SITE
-  FINING
-  EXCAVATION
-  TUNNELS AND ENCLOSED SPACES
-  FOR CULTURAL SPACES

EFFICIENCY DEPENDS ON WHAT TOOLS YOU USE



WATCH MB AT WORK
Scan the QR code
Info@mbamerica.com
WWW.MBAMERICA.COM

THE WORLD OF
CONCRETE
Phone: 800.399.66
January 22-25 2010

MB

THE CRUSHING EVOLUTION



Mobile Dust Suppression Design Features Tier IV Final Gen Set

A global innovator in dust and odor control technology has updated its family of self-powered dust suppression equipment with Tier IV Final-compliant generators, ensuring compliance in all 50 states. BossTek made the announcement with the debut of the new DustBoss® DB-60 Fusion™, a field-proven suppression system driven by a high-reliability 25 HP electric motor and paired with a gen set powered by a heavy-duty 4-cycle indirect injection diesel engine. Designed, engineered and assembled in the USA, the generator features a dual-containment fuel cell, heavy gauge lockable enclosure and oversized brushless alternator for easy starting.

Permanently mounted on a rugged road-worthy trailer, the company's Fusion lineup is proving to be a popular and effective means of delivering versatile, mobile dust suppression technology to sites that lack a readily available power source. The company expects to unveil two other Fusion models in early 2019, giving customers the ability to select the size and coverage range needed to best suit their operations.

The new generator series is designed with sound attenuation for excellent noise reduction and a multi-voltage switch with utility power outlet in all voltage modes. The digital engine / generator controller is equipped with single button stop / start and an 80-gallon fuel capacity, giving the units a run time of more than 24 hours at a prime rating of 45 kVa. Like its previous Fusion systems, BossTek warrants the DB-60 Fusion for three years / 3,000 hours, with 5-year / 5,000 coverage on the electric motor and a 2-year / 2,000 hour warranty on the generator.



SMALL JOBS- Brown Bear Attachments **BIG JOBS- Brown Bear Carriers**



BROWN BEAR

Brown Bear Corporation

P.O. Box 29 • Coming, Iowa 50841 • 641-316-7196 • sales10@brownbearcorp.com

See video clips @ www.youtube.com/brownbear6294



What Tier IV Means

Tier 4 refers to the latest emission milestone established by the U.S. Environmental Protection Agency (EPA) and the California Air Resources Board (CARB). The regulations apply to new engines found in off-road equipment, including construction, mining and agricultural equipment, as well as marine vessels, locomotives and stationary engines used in industrial and power generation applications.

Tier IV-compliant engines are designed to significantly reduce emissions of particulate matter (PM) and oxides of nitrogen (NOx) to near zero levels. Relative to previous emissions standards, Tier IV-compliant engines reduce emissions by over 95 percent for most agricultural and construction equipment and just over 86 percent for much larger applications such as locomotives and marine vessels. The Tier 4 emission standards are roughly similar to emission reduction requirements for engines that power heavy-duty trucks.

How It Works

The DB-60 Fusion drives pressurized water through a circu-

lar stainless steel manifold with 30 atomizing spray nozzles, then launches millions of tiny droplets with a powerful fan that produces 30,000 CFM (849.50 CMM) of air flow. Atomized mist droplets of 50 to 200 microns in size are thrown out in a 200 foot (60 meter) cone at an adjustable 0 to 50° elevation angle, capturing airborne dust particles and dragging them to the ground. Unlike industrial sprinklers used for the same purpose, which can require hundreds of gallons of water per minute, the DB-60 only uses about 23 GPM (87 LPM) to help avoid pooling or runoff.

A touch screen panel for controlling the dust suppression unit is encased in a NEMA 3R cabinet, allowing operators to control oscillation, booster pump, fan and water. The cabinet is constructed for outdoor use, designed to provide protection against solid foreign objects (such as dirt), air (dust, emissions), water (rain, sleet, snow) and ice formation. The system provides valuable mobility and versatility in one of the most popular and effective dust suppression designs on the market, able to deliver up to 62,800 square feet (5,834 square meters) of coverage.

“Maintaining air quality is essential for communities near a



Get a Quote

sales@dicausa.com • 800.610.3422
Guthrie Center, IA

See DICAUSA.COM for full product details



Engineered Outrigger Pads to Help You Setup Safe

Get Unbreakable Strength • Save Time & Money • Protect Your Operators



DICA Outrigger Pads are Trusted by Operators in 40+ Countries around the World.



BARNHART

ALL



CRANE SERVICE INC.

Kiewit



DICA Outrigger Pads are the Total Package!

Mike Wisnom, NASA Contractor

FAMILY OWNED & OPERATED • CELEBRATING 30 YEARS

Whether you use wood or dee steel forms for your forming needs - we have the accessories for you.

Controlled steel nail sleeves

Stake pullers

Custom forms made to your specifications.

Fat walls

Fabricated to meet your specifications.

Superly engineered metal, concrete forms and accessories.

dee CONCRETE ACCESSORIES & FORMS FROM FRANKLIN
 1700 W. Main Street, Franklin, OH 43024
 614.891.1111 • WWW.DEEFORMS.COM

demolition project, mining operation or other bulk material handling activities, but even in places with little infrastructure, dust can choke worksites and foul equipment,” said Project Engineer Jason Lesch. “We engineered the Fusion to be highly mobile, with its own power source, so it can be easily towed anywhere on a job site.”

Equipped with an in-line 75 mesh, 200 micron filter, the unit can be specified with special filtration to accommodate non-potable water sources. In addition, the new design can be optimized with a Variable Frequency Drive (VFD) to precisely adjust fan speed. An optional dosing pump is available for precise metering of additives to enhance particle control even further.

Bosstek is a global leader in solutions for dust suppression, odor control and crowd cooling, serving a wide range of applications. The company’s high-quality, industrial strength equipment carries a no-excuses guarantee of customer satisfaction. For more information, visit www.bosstek.com.

www.bosstek.com

DON'T BITE OFF MORE THAN YOU CAN CHEW ...OR LESS

THE NEW BATTLE AX MULCHING HEAD

- Exclusive depth gauge design for optimized material feed rate.
- Processes just the right amount at a time, maximizing efficiency.
- Two-stage cutting chamber with adjustable primary shear bar.
- Available for skid steers and 4.5-22 ton excavators.

BUILD YOUR OWN AT LOFTNESS.COM

LOFTNESS

NEW KUBOTA[®] ENGINES & PARTS • RE-MAN KUBOTA[®] ENGINES
Your Professional Engine Service Center

FULL LINE OF KUBOTA[®] ENGINES & PARTS

- + CHECK OUT OUR NEW & REMANUFACTURED ENGINES OR WE CAN REBUILD YOUR EXISTING KUBOTA[®] ENGINE
- + GENUINE PARTS FOR A VARIETY FOR KUBOTA[®] ENGINE APPLICATIONS

GENUINE PARTS

- HEADS
- FILTERS
- INJECTORS
- INJECTION PUMP
- OVERHAUL KITS

Kubota
 ENGINES
 Genuine Parts • Service

Country SALES & SERVICE **(888)529-8530**

255 Troy Bridge Road
 Orrville, OH 44667

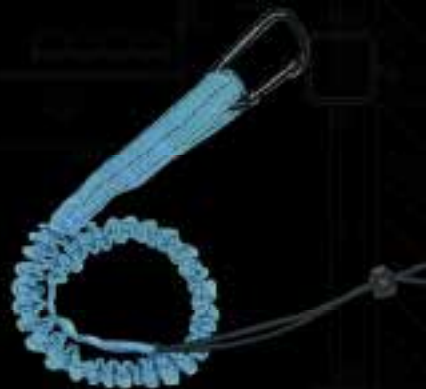
WE SHIP DAILY USING UPS & TRUCK FREIGHT

www.countrysalesandservice.com

STANDING SEAM ROOF ANCHOR

THE INDUSTRY'S LIGHTEST AND
MOST UNIVERSAL FIT ANCHOR POINT

Patent Number: US D629.679



FULL LINE OF FALL PROTECTION PRODUCTS

CALL NOW! **863-703-4522** OR
TEXT **SSRA** TO **95577** FOR MORE INFO

www.fallpd.com

2021
2020
2019

[PAVING THE FUTURE]

The Largest Asphalt Exposition & Educational Conference In North America



February 12-14, 2019 • Indianapolis, IN, USA

450+ Exhibitors • 120+ Education Sessions • 1 Place To See It All



Register in advance and save over 35% at www.worldofasphalt.com
or text "ASPHALT" to 313131.

Co-located with
NSSGA
AGGI
AGGREGATED ACADEMY & EXPO

GREENMACHINE

CLEAN. QUIET.
ALL ELECTRIC
PULLING AND
TENSIONING.



THE NEWLY DESIGNED DPT40E IS POWERED BY A REGENERATIVE ELECTRIC MOTOR, ELIMINATING THE NEED FOR DIESEL AND HYDRAULIC OIL.

FOR SALES INQUIRIES, PLEASE EMAIL US AT SALES@TSE-INTERNATIONAL.COM

U.S. PATENT NOS. 8,322,689 B2 AND 9,178,340 B2

TSE
INTERNATIONAL, INC.
1-800-825-2402

5 Steps to Winterize Your Home for Comfort & Energy Savings



Keeping the warmth in and the cold out is quick, easy, and requires no construction

When the temperature drops, snow falls, and there is an icy chill in the air, homeowners know it is time to winterize their homes for comfort and energy savings.

If you simply cannot stand another frigid winter with cold drafts blowing through your home, just follow five quick, easy steps to keep your home feeling toasty without hurting the family budget.

While the first few tips may be familiar, the last one will surprise you. It tackles perhaps the greatest heat drain on your home in an innovative way that could leave your family feeling warm and comfy for many winters to come.

In the battle against winter chills and rising heating bills, the key strategy is to keep the precious heat inside and the cold drafts outside. Here is how you do it:

1. Water heater and pipes

To keep hot water for baths, showers, and handwashing without constantly firing up the water heater, wrap an insulated blanket around it, which will conserve the heat. To keep any exposed household pipes out of the cold and from potentially freezing, it is a good idea to wrap them with insulation too.

2. Attic, walls, and basement

In order to further limit heat loss, add insulation to the attic, walls, and basement as well, if this is insufficient. If you can see exposed ceiling joists in the attic, you probably do not have enough. So, it is a good idea to roll an additional blanket of insulation over the top of any already in place.

It is particularly important to insulate the attic to prevent heat transferring from your home's living areas to the roof. There the heat can melt snow and ice on the roof, which then refreezes, along with additional snow and ice, causing ice dams on the roof. These ice dams can block roof drainage, leading to water damage and potentially a collapsed roof under the weight of accumulated water, snow, and ice.

3. Fireplace and Furnace

When you are not using the fireplace, close the flue to prevent heat from going up the chimney. While you are at it, replace your furnace filter to ensure good furnace airflow and heat distribution throughout

your home. Move any furniture that may be blocking the heating vents.

4. Doors

Any gap around doors will allow warm air to escape and cold air to enter. Adding weather stripping around the door, including the door sill, will help to plug these gaps. But weather stripping tends to crack and shrink, particularly in harsh climates. So, check it annually and replace it as necessary.

5. Windows and Patio Doors

Windows and glass patio doors are arguably the greatest culprit of home heat loss. They transfer heat by thermal conduction through the panes and glass surface, so additional heating is required to keep everyone comfortable.

Air leakage through window and patio door seals that crack over time also worsens the problem. While single pane windows transfer the most heating (and cooling), even dual pane windows may be insufficient to keep homes sufficiently warm and tame high utility costs.

However, homeowners are finding relief with an innovative approach that adds an inner insulating window to existing windows, and a "second sliding patio door" that can be installed inside or outside of the existing door. This can reduce heat loss by 77% or more for single paned windows, and heating/cooling bills by up to 30%, while stopping air infiltration for further energy savings and greater comfort.

Adding the inner window, in fact, provides an additional layer of insulation with better insulation values than the best double pane windows, and substantially improves insulation values for dual pane windows as well. The second sliding patio door has even greater insulation value due to its greater surface area.

The same practice has an added benefit. It also serves as an effective sound barrier to dramatically reduce unwanted external street noise. This provides homeowners with a better night's sleep and a more peaceful environment.

As an example, Soundproof Windows, a national manufacturer of window energy efficiency and soundproofing products, specializes in adding a "second insulative window" that can be installed easily in front of the existing window. The product is designed specifically to match and function like the original window, no matter its design or whether it opens or closes, and can be installed in hours without

PIONEER BRIDGES

A division of Bailey Bridges, Inc.



Prefabricated Steel Truss Bridges
Pedestrian & Light Vehicular Spans up to 250'

866-708-5778

www.pioneerbridges.com



258-845-7075
258-845-7775 Fax
119 40th Street NE
Fort Payne, AL 35967



BAILEY BRIDGES, INC.

Portable Bridges — Rent or Buy — Bridge Decking & Grids

SCHWEISS

DOORS

HYDRAULIC — OR — BIFOLD

ONE-PIECE DOORS

STRAP LIFT DOORS

507-426-8273



• AVIATION • SHOP DOORS

SCHWEISSDOORS.COM

With Noise Mitigation

Show Compliance
Be a Good Neighbor

WebSLARM

Build-in Web Server

Try It

netslarm.firewave.com

User: SLARM

Pass: admin

SLARMulti™



The Question is -

dB or not dB?™

The Answer

The **SLARM** solution™

Community/Industrial Noise Monitor and Alarm

Standalone or w/PC

Text/Email Alerts

Rolling 3 weeks Logging

24/7 Alarm Scheduler

Ethernet, USB RS232

Secure Remote Access

SLARMsoft included

Indoors or Out



SLARM successes

Construction

Johns Hopkins Hospital Floor Remodel

Apple's New Headquarters Construction

Airport Jet Run Up Monitoring

Industrial

Boatyards-Ferry and Tug construction

Hospital Medical Helicopter Monitoring

Remote Alarms Monitoring-Dams

Entertainment

Red Rocks- Colorado

ATT Performing Arts-Dallas

Ocean Speedway -Watsonville,CA

ACO Pacific, Inc.

www.acopacific.com Tel:1-650-595-8588 Sales@acopacific.com

On YouTube Search: SLARMSolution

NATURALLY SUPERIOR

WYO-BEN.

Bring profitability to your job site with WYO-BEN's line of high-performance, cost-effective drilling fluids.

- No Complicated Recipes
- Highly Concentrated Products
- Maximize Your HDD Operation
- Less Handling, Fewer Problems

Contact us today!
1-800-548-7055 or www.wyoben.com

construction. The company also offers a "second sliding patio door" that follows the same principle.

To prevent air infiltration, the company's window frame and patio door seals are held under constant tension, using custom made tempered stainless-steel springs that actively squeeze down on the window and sliding door. This means the window and patio door seals are flexible, constant and always working.

When used in combination with existing windows, in fact, the second window and patio door seals effectively eliminate any cold outside air from leaking into the home from this source. This considerably reduces the need to crank up the heat to maintain comfort, which further increases home energy savings. In terms of reliability, such seals are guaranteed for a 50-year lifespan.

Homeowners understandably do not want to "see their breath" indoors due to the cold or pay heating bills topping 4 figures this winter.

Fortunately, they won't have to if they follow a few steps to keep the heat in and the cold out this season. By doing so, they will not only increase their family's comfort, but also significantly save on heating (and cooling) costs for years to come.

For more information, contact Soundproof Windows, Inc. at 4673 Aircenter Circle, Reno, NV 89502; call 1-877-438-7843; email sales@soundproofwindows.com; or visit <http://www.soundproofwindows.com>

MORE CONTRACTORS RELY ON US.

We're proud that Dominion Rubber Tracks are the **#1 Selling rubber track** brand in America.

There's a reason we're celebrating 20 years of service. **Find out why today!**



877-633-9181

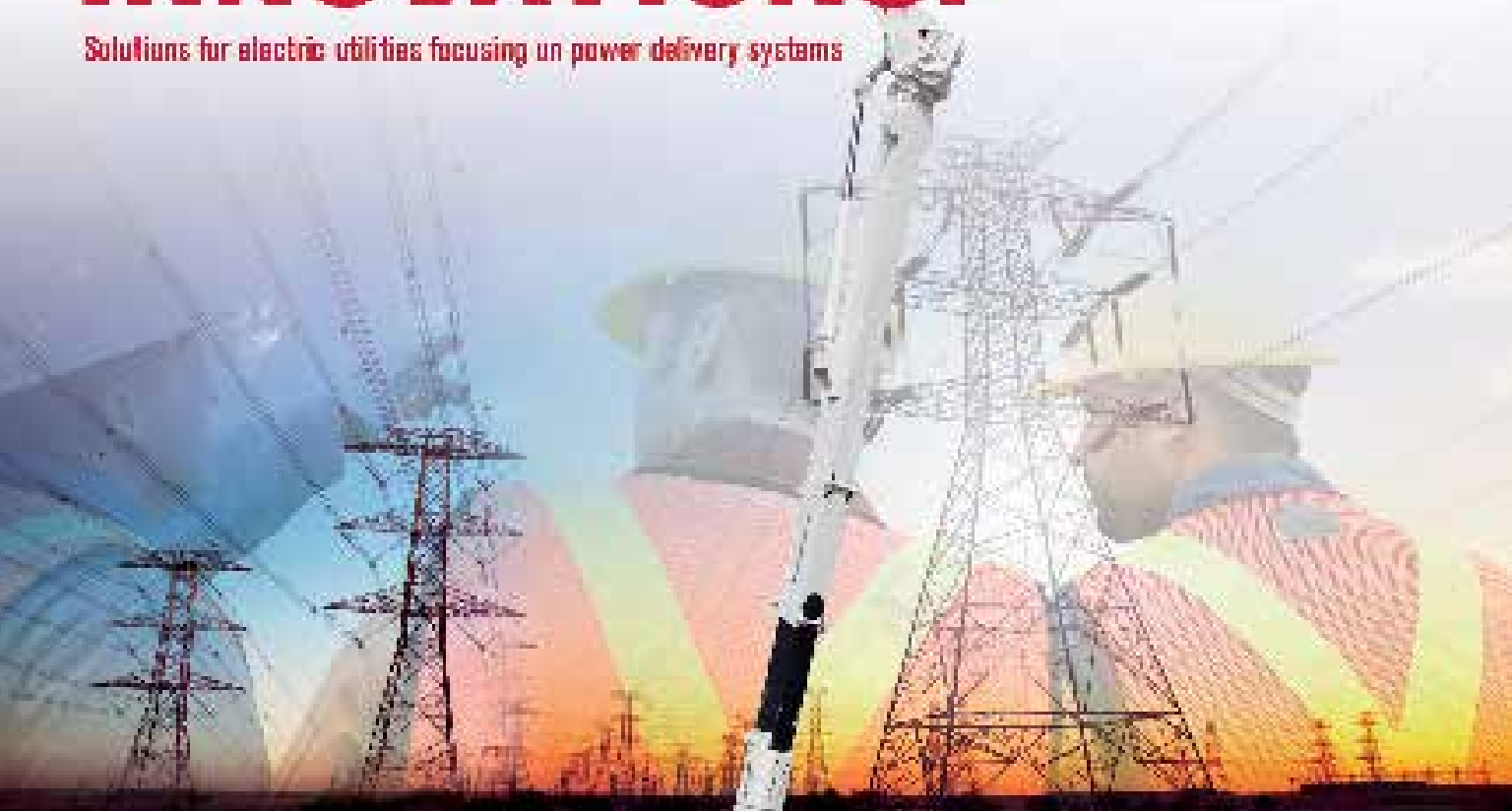
DOMINION
Rubber Tracks

depparts.com

Ashland, VA • Jacksonville, FL • Dallas, TX • Cincinnati, OH • Portland, OR • Sacramento, CA • Schenectady, NY • Leduc, AB

PIONEER OF TOMORROW'S INNOVATIONS.

Solutions for electric utilities focusing on power delivery systems



History speaks for itself. Terex Utilities has a legacy of innovative solutions that have advanced the industry — from the first hydraulic digger Derrick to our recent launch of the Terex® Lead Alert™ system. We provide game-changing solutions that work for our customers and plan to continue with the Terex™ Team “Works for You” by listening and taking action. We are here to help solve your challenges and provide innovative, high-quality products and services that fit your needs.

www.terex.com/utilities



WORKS FOR YOU.™

The CEMENT MASON'S CHOICE



ALUMINUM STRAIGHTEDGES

- ✓ 4' to 20' lengths with kerfed edges and welded end caps
- ✓ Durable and easily cleaned
- ✓ Same size and feel as a wooden 2X4, holds a true edge without warping
- ✓ Lighter weight, less bulk than standard stock aluminum
- ✓ Actually 1 1/2" x 3 1/2"
- ✓ 1/8" wall thickness

Special order sizes available!

CUSTOM

TORPEDO GROOVER

- 24", 30", 48" and 56" lengths
- Machine tooled
- High grade aluminum
- Cuts straight control joint-1/8" depth
- Also available in 1/16" depth



Finishing groover for your job and design

BUTTERFLY GROOVER

"...makes a beginner cut joints like a pro!"
 "The torpedo groover you follow it with will make a straight groove... no matter how long you cut it!"



800-722-8339
slipindustries.com

Get Cool!



Extend transformer life!

Increase transformer capacity up to 166%!

- expert technical assistance
- low sound levels
- energy-efficient motors
- large inventory
- one-piece cast aluminum blades
- galvanized or stainless steel guards



quality engineered, performance tested

P.O. Box 183 Germantown, Wisconsin 53022

262.333.3318

www.krenzvent.com

The all new T14-54/617 is the Tier 4-compliant Trencher Mechanical Trencher. Packed with plenty of power for the toughest rock, the new T14-54/617 runs so cleanly there is no regen cycle needed. Trencher is known for being the longest lasting, toughest, underground equipment in the industry all backed by 24/7, worldwide, service and support. PinPoint® Telematics comes standard, logging and transmitting real-time data to optimize operations and reduce downtime due to missed maintenance.



T14-54/617

©2018 American Augers, Inc.
 A Charles Machine Works Company

Trencher.com



Advancing Strategies for Fleet Improvement

WILLIAMSBURG, VA JUNE 2-5 2019

WILLIAMSBURG LODGE & CONFERENCE CENTER

Join fleet professionals from investor-owned electric utilities, electric cooperatives and electrical contractors from across the U.S. and Canada at the industry's premier educational event featuring:

- Presentations by industry experts, manufacturers and fleets
- Roundtables where fleet professionals and representatives from manufacturers and service providers share best practices
- A drive-through utility equipment demonstration and an exhibition of the latest equipment and services for utility fleets

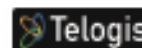
Register at EUFMC.com

SPONSORS

LEADERSHIP



PLATINUM



Company	Pg.	Website
ACO Pacific	23	www.acopacific.com
Atlantic Screen & Mfg., Inc.	2	www.atlantic-screen.com
Brown Bear	15	www.brownbearcorp.com
Buccaneer Rope	12	www.bucrope.com
Country Sales and Service	18	www.countrysalesandservice.com
Dee Concrete	18	www.deeconcrete.com
Dica	17	www.dicausa.com
Dominion Rubber Tracks	24	www.depparts.com
Efficiency Production	1	www.efficiencyproduction.com
eMars Inc	28	www.emarsinc.com
EUFMC	27	www.eufmc.com
Fall Protection	19	www.fallpd.com
Krenz Vent	26	www.krenzvent.com
Loftness	18	www.loftness.com
M.B. America	13	www.mbamerica.com
Mobile Desk Solutions	9	www.mobiledesk.com
Morooka USA	BC	www.morookacarriers.com
MSA Safety	11	www.msasafety.com/safetyevaluation
Multivibe	3	www.multivibe.com
Pioneer Bridges	23	www.pioneerbridges.com
Rayco	7	www.rayco.com
Rome Plow	5	www.romeplow.com
Schweiss Doors	23	www.schweissdoors.com
Slip Industries	26	www.slipindustries.com
Stephens Mfg	IFC	www.stephensmfg.com
Stoltz	6	www.stoltzfusspreaders.com
Terex	25	www.terex.com
Trencor	26	www.trencor.com
TSE	21	www.tes-international.com
Universal Horizontal Directional Drilling	IBC	www.unihdd.com
Warehouse Equipment	8	www.warehouseequipment.com
World of Asphalt	20	www.worldofasphalt.com
Wyo-Ben	24	www.wyoben.com

TAKING CHANCES WITH DAVIS - BACON MANUAL PAYROLL COMPLIANCE?

EACH WEEK, EVERY CHECK HAS 30+ WAYS TO BE A LOSING PROPOSITION.



NONE OF OUR 15,000+ CLIENTS HAS EVER HAD A LEGAL COMPLIANCE ISSUE... NOT ONE.

480-595-0466



emarsinc.com

Be Davis-Bacon Compliant In Minutes

SALE

UNI UNIVERSAL
HORIZONTAL DIRECTIONAL DRILLING

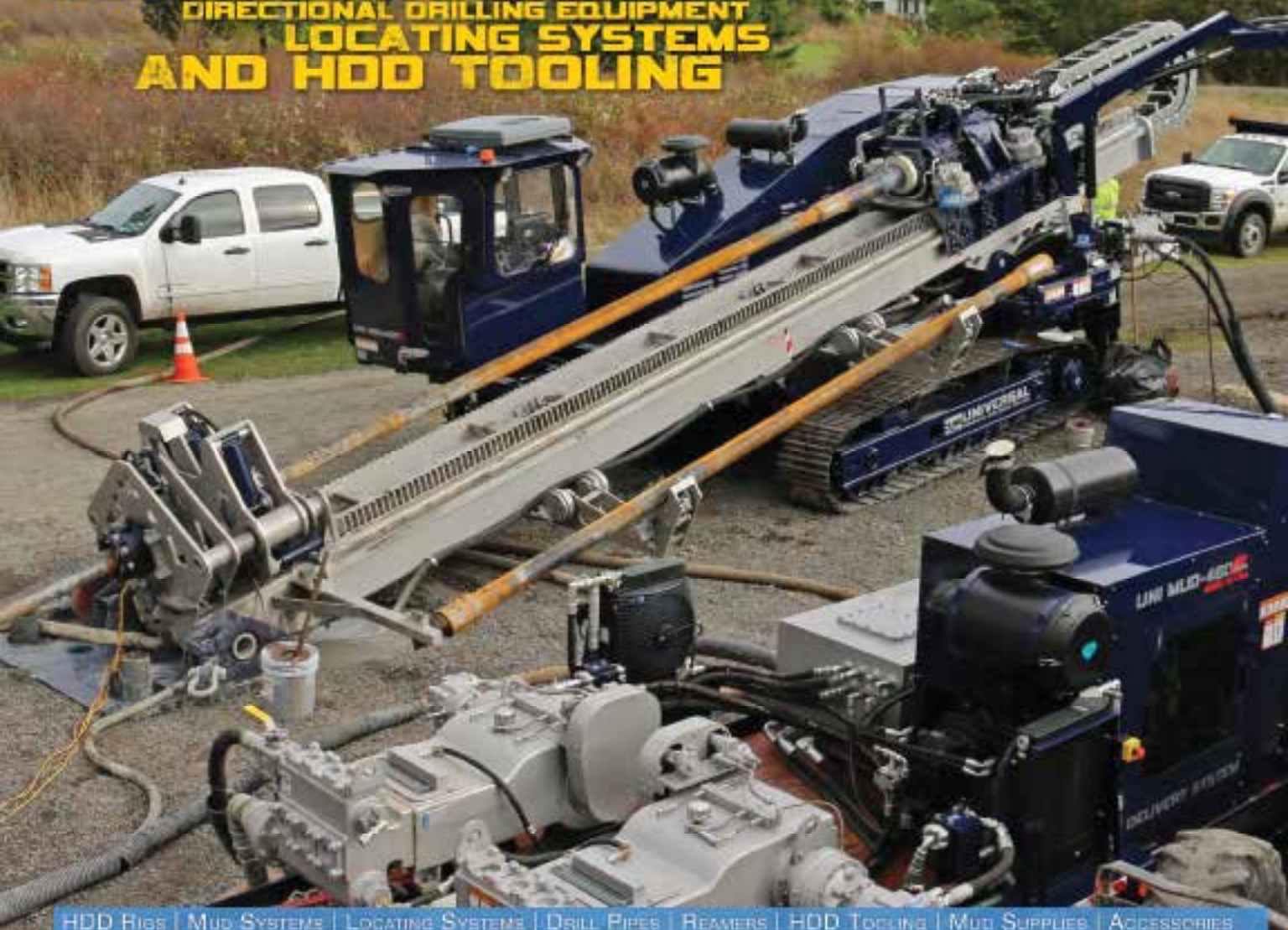
REAMERS, SONDE HOUSINGS, AND DRILL BITS

DRILL PIPES

MUD SYSTEMS



**FULL LINE OF
CUSTOM HDD RIGS**
DIRECTIONAL DRILLING EQUIPMENT
LOCATING SYSTEMS
AND HDD TOOLING



HDD RIGS | MUD SYSTEMS | LOCATING SYSTEMS | DRILL PIPES | REAMERS | HDD TOOLING | MUD SUPPLIES | ACCESSORIES

1221 FLEX CT, LAKE ZURICH, IL USA | TEL: 847-955-0050 | WEB: WWW.UNIHDD.COM | EMAIL: INFO@UNIHDD.COM

WE KEEP AMERICA ON TRACK



MOROOKA

Call: **1-877-667-6652**

or

Visit: **morookacarriers.com**