

JOHN DENVER

The Tribute



Starring

JOHN ADAMS BAND

“A Rocky Mountain High Experience”



A Blue Tulip Music, LLC Production

JOHN DENVER

The Tribute

ELECTRONIC PRESS KIT

JOHN ADAMS BAND

JOHN DENVER "The Tribute" has performed to encore-demanding audiences all over the world. In the USA places like: New York and New York City, West Virginia, California, Colorado, Wisconsin, Indiana, Wyoming, Texas, Montana, Idaho, Las Vegas, New Mexico, Ohio, Pennsylvania, and many more places. In their home state Colorado at the prestigious Red Rocks Amphitheater, Ellie Caulkins Opera House and and 15 times at the Wheeler Opera House in Aspen. Outside the USA in England, Germany, Holland, Belgium, Austria, Switzerland as well as in Beijing, China.

John Adams had the privilege to perform with John Denver in 1988, during a TV-special in Europe. Together they performed a duet of "*Whispering Jesse*". Mr. Denver himself was amazed at how much the two sounded the same. John Adams started to learn Denver's music since 1972, when *Take Me Home, Country Roads* became popular in many parts of Europe.

John Denver's untimely death in October 1997 was felt all over the world, and John Adams committed himself to keep John Denver's music alive, much to the appreciation of Denver's family, friends and fans that thoroughly enjoy the fabulous and timeless music of Colorado's Rocky Mountain Legend.

The concerts are memorable, magical and invite audiences to enjoy a poignant journey through John Adams' personal stories about his time with John Denver and with songs like: *Rocky Mountain High, Take Me Home, Country Roads, Annie's Song, Back Home Again, Calypso, Thank God I'm A Country Boy*, and many more.....

Take a few minutes to read this press kit and to watch our **[PROMO VIDEO by clicking on the icon on the right](#)** and contact us if you would like more information or to book the band for a **Rocky Mountain High Experience!**



**Click the icon
to watch the
John Adams
Band Video
Promo**

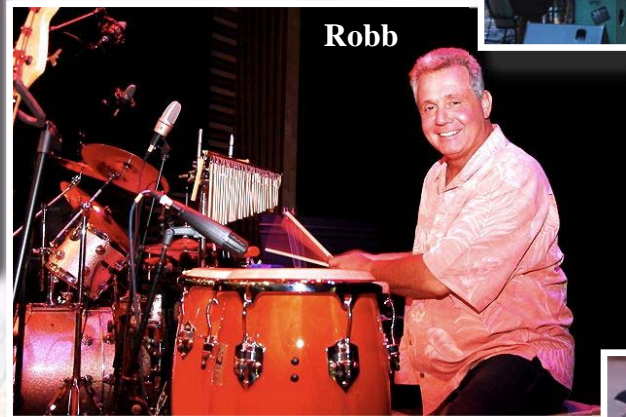
JOHN ADAMS BAND

John Adams has created an **incredible tribute experience** and is considered the best performer of John Denver's music today! Together with his very talented band, who have dedicated themselves to the music as well, they offer a full-length show that pleases audiences all over the world.

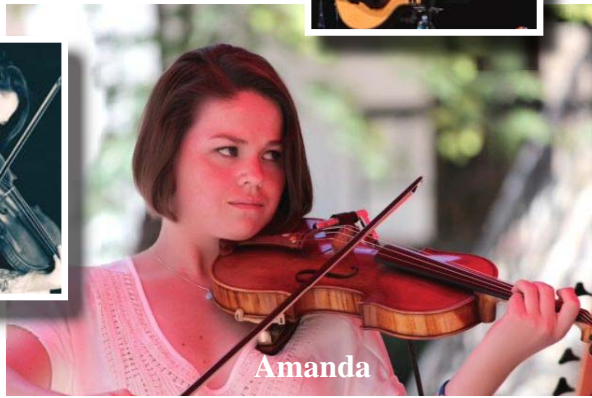
John



Jerry



Robb



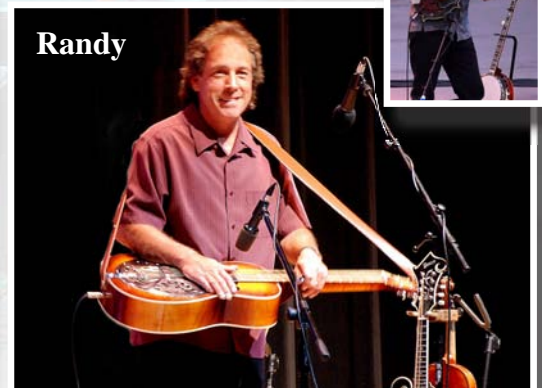
Amanda

Steve



Jeff

Randy



BIOGRAPHY



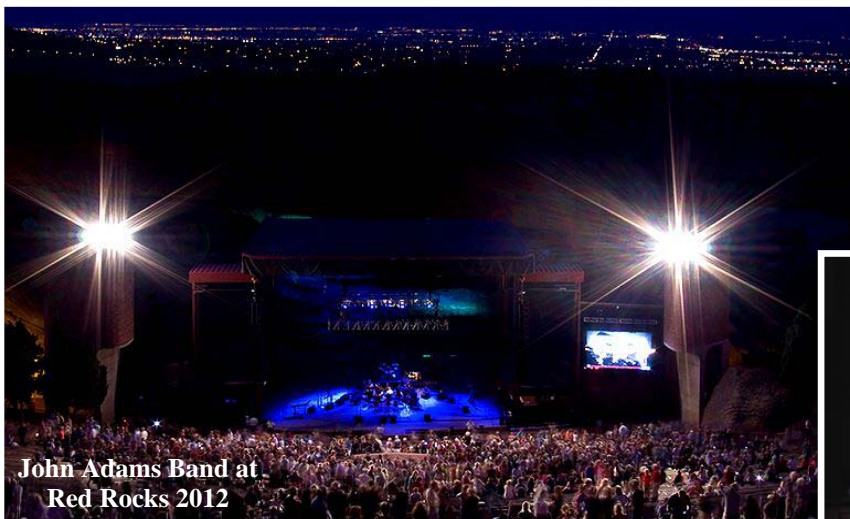
John Adams was born December 30, 1958 in Utrecht, Holland. After being introduced to music through the boys' choir at the city's local church, he soon learned how to play the guitar, which was given to him by his cousin. Ever since that day in 1969, guitars have always been with John Adams, and the music and lyrics have traveled right along with them. In the latter half of 1972, John Denver became a big hit in Europe with his very popular song; Take Me Home, Country Roads. Despite his love for Rock & Roll, John Adams' taste in music changed instantly and he became dedicated to the music of John Denver. After buying every available album and music book, John began to learn his guitar style, while singing along with the recordings.

Loving and following the music, he had the chance to attend two of John Denver's concerts in Amsterdam in 1977 and many followed after that. Just eleven years later, John Adams won a song contest in Holland with John Denver's Leaving on a Jet Plane. After winning the contest and performing a duet with John Denver of Whispering Jesse on live national television, the possibilities became endless for John Adams.



After moving to the United States in March 2000, John continued to perform John Denver's music exclusively where ever he was invited, which evolved into: JOHN DENVER "The Tribute" and has performed in many parts of Europe and the United States and even as far as Beijing, China. Since October 2000, the JOHN ADAMS BAND celebrates the life, memory, and music of John Denver in their show: JOHN DENVER "The Tribute". At all their concerts, John takes his audience of hundreds and sometimes even thousands on an unforgettable and poignant journey back in time with some of John Denver's most beloved songs like; Rocky Mountain High, Annie's Song, Sunshine on My Shoulders, and many others.

One of the band's highlights was a concert in July 2012 at the prestigious Red Rocks Amphitheatre in Denver/Morrison, Colorado, where they performed with the Colorado Chamber Orchestra.





TECHNICAL RIDER

All terms and provisions contained herein are integral and binding parts of the Blue Tulip Music, LLC Performance Agreement.

STAGE and POWER: The stage is to be a sturdy, single level platform, at least 20'D x 40'W x 1'H. A carpeted drum riser (8'x16'x1') is recommended at center stage. The stage is to be set, in place and free of encumbrances when the band/crew arrives for load-in. Storage for equipment cases should be a storage room or an area, adjacent to the stage and out of sight of the audience.

John Adams Band will require power supply of at least three (3) 20 AMP circuits @ 110VA each. (220VA for Europe)

LIGHTS: 2 light trees (or a front and back truss) are required with at least 4 multi-colored PAR floods per tree. Suggested colors include: red, blue, green, and yellow. Water-based hazers are not required.

SOUND SYSTEM: A quality sound system is critical for John Adams Band performance. We require a sound system consisting of a minimum of the following:

- 1) Minimum 24-32 channel mixing desk, with 3-4 band input channel EQ, 2+ aux sends, 6 sub-mixes, and a stereo house mix. If monitors are operated from Front of House, 4 to 8 additional aux sends are required. Knowledgeable system technicians should be available during set-up and performance.
- 2) 24-32 channel snake.
- 3) 3-way speaker system (including sub-woofers) suitable for venue size with appropriate cabling, power amps, equalizers, and crossovers.
- 4) 2 digital effect processors for reverb (Hall) on vocals and other effects on instruments. Effects on monitor mix and house mix. Reverb delay and length TBD.
- 5) # Microphones and (boom) stands/clips as per Input List.
- 6) 1 CD player for pre-show and intermission music. A selection of music appropriate to the theme of our concert.

MONITOR SYSTEM: John Adams Band members, features multi-part harmony and background vocals, which require a stage monitor system.

- 1) At least 2 to 8 mixes into 4 to 8 wedges are required; 4 to 8 mixes preferred. An experienced engineer should be available to assist with the monitor system.
- 2) 5 to 9 2-way floor monitors each with at least 1-12" speaker and a high frequency horn. 2 x 15" speakers for John Adams preferred. John Adams is not using an in-ear monitor system.

We realize that the gear specified may not be available at your location; however, we have tried to be as generic as possible, requiring industry standard stage gear.





TECHNICAL RIDER (continued)

DRUMS: A 6-piece drum kit (Yamaha) consisting of the following:
(Drummer will bring his own kit, unless otherwise negotiated in the contract)

- 1-22" bass drum
- 1-5.5" x 14" snare drum
- 1-12" rack tom
- 1-15" floor tom
- 1-14" high hat
- 1-8" splash cymbal
- 1-16" crash cymbal
- 1-18" crash cymbal

PERCUSSION: 2 Congas, Shakers, Bells, Djembe, and other percussion instruments

JOHN ADAMS BAND will bring : (Unless otherwise negotiated in the contract)

- 1- Bass Amp (speaker cabinet)
- 1- Guitar Amp
- 1- Piano Amp

Guitars, Electronic Piano/Keyboards, Electric Bass and Upright Bass, Drum kit and all Percussion, Fiddle/Violin, Mandolin, Dobro, Electric Guitar, Flute, Penny Whistle, Saxophone, Tenor Recorder, effect pedals, Banjo, guitar cables, drum sticks, guitar tuners, guitar stands.

MICROPHONES and DI's: John Adams Band will bring some of their own microphones and DI's but will use any venue microphone and DI available.

NOTE: John Adams Band is able to bring own Sound System and Sound Engineer at additional cost. Such will be negotiated and confirmed in the proposal and contract/agreement.



TECHNICAL RIDER

(continued)

INPUT LIST

CH	POSITION	STAND	MICROPHONE	SUBMIX
1	Lead Vocal (John Adams)	Boom / Clip	Vocal Mic	
2	6 string guitar John	DI	DI (Own)	
3	12 string guitar John	DI	DI (Own)	
4	12 string guitar John	DI	DI (Own)	
5	Electronic Piano/Keyboard	DI	DI (Stereo)	
6	Electronic Piano/Keyboard	DI	DI (Stereo)	
7	Back - up Vocals Piano	Boom / Clip	Vocal Mic	
8	Flutes/Sax	Boom / Clip	Instrument Mic	
9	Bass (up - right bass)	DI	DI (Own)	
10	Bass (electric Bass)	DI	DI (Own)	
11	Kick Drum	Desk boom	Full Drum Kit Microphone Set	
12	Snare Drum	Boom / Clip		
13	Tom 1	Boom / Clip		
14	Tom 2	Boom / Clip		
15	High Hat	Boom		
16	Cymbal 1 (overhead)	Boom / Clip		
17	Cymbal 2 (overhead)	Boom / Clip		
18	Overhead Percussion	Boom / Clip	Instrument Mic	
19	Conga 1	Boom / Clip	Dual Split	
20	Conga 2	Boom / Clip	Microphone Set	
21	Djembe	Boom / Clip	Instrument Mic	
22	Fiddle/Violin	Wireless	Wireless	
23	Mandolin	DI	DI (Own)	
24	Dobro	Boom / Clip	Instrument Mic	
25	Banjo	Boom / Clip	Instrument Mic	
26	Fiddle (second Fiddle)	DI	DI (Own)	
27	Lead Guitar	DI (guitar amp)	DI + Amp mic	
28	Other (Reserve)	DI /mic	DI /mic	
29	Talk-back to monitor mix only	N/A	Regular Mic	N/A
30	FX Return		Reverb Hall	
31	FX Return		Reverb Hall	
32	FX Return		TBD	
33	FX Return		TBD	



STAGE PLOT for JOHN ADAMS BAND



STAGE

Upstage Curtain or Backdrop

Drums and Percussion



4

Electric and Upright Bass



5

Violin - Fiddle

3



Flute, Soprano Sax, Penny Whistle and Tenor Recorder



6

Grand Piano, Keyboards and Vocals



2

3 x Acoustic Guitar and Lead Vocals



1

Fiddle, Mandolin, Electric Guitar, Banjo and Dobro



7

Front Stage

AUDIENCE

PRICE & BOOKING INFORMATION

1.0 **Contracts**

1.1 Blue Tulip Music, LLC, representative for John Adams, and the contracting party will sign all contracts in duplicate. Payment of the balance due will be made immediately after the concert or performance.

A deposit is not always required.

1.2 Please make checks payable to Blue Tulip Music, LLC

2.0 **Pricing/fees**

2.1 Call for pricing on solo performances (90 minutes or less)

2.2 Call for pricing on solo concerts (90 minutes and more)

2.3 Fees may increase for Holiday and “out-of-state” performances and concerts.

2.4 Call for pricing on Band/Orchestra Performances and Band/Orchestra Concerts

3.0 **Travel & Lodging**

3.1 For performances and concerts outside of a 100-mile radius, travel expenses will apply.

3.2 For performances and concerts outside of a 200-mile radius, and ending after 9:00pm, lodging may need to be provided.

3.3 For performances and concerts outside the state of Colorado, travel expenses will include airfare, transportation, lodging and meals.

3.4 For performances and concerts outside the upper 48 states of the United States, travel expenses will include airfare, transportation, lodging and meals, as well as \$50.00 per diem, when no concert or performance is scheduled.

4.0 **Stage Space**

4.1 Minimum performance stage requirements:

a. For solo concerts/performances – 60 (Sixty) square feet

b. For (full) band concerts/performances – 400 (Four Hundred) Square feet

c. A riser for Drums and Percussion is minimal 24 x 8 feet

d. Contact us for Orchestra requirements

5.0 **Dressing Rooms**

5.1 A dressing room will be provided. Additional dressing rooms are required for Band/Orchestra.



SONG LISTS

John Denver's solo career spans over a period of 28 years, starting in 1969, after he left the Mitchell Trio. Throughout his career he wrote many songs, co-wrote songs or performed and recorded songs written by other artists. Nevertheless, many of his hit-songs were performed at his concerts, i.e. ballads, love songs, funny songs, serious and emotional songs. John Adams concerts are always a combination of these songs and are selected from a long list of optional songs. Below is a sample of one of the song list.

1. EAGLES & HORSES
2. BACK HOME AGAIN
3. I GUESS HE'D RATHER BE IN COLORADO
4. GRANDMA'S FEATHER BED
5. RHYMES & REASONS
6. SUNSHINE ON MY SHOULDERS
7. ME & MY UNCLE
8. DARCY FARROW
9. LEAVING ON A JET PLANE
10. DREAMLAND EXPRESS
11. THE FOXFIRE SUITE

BREAK

12. ROCKY MOUNTAIN HIGH
13. WHISPERING JESSE
14. THANK GOD I'M A COUNTRY BOY
15. KISSING YOU GOODBYE
16. POEMS, PRAYERS & PROMISES
17. ANNIE'S SONG
18. HOME GROWN TOMATOES
19. PERHAPS LOVE
20. AMAZON
21. THE BALLAD OF ST. ANNE'S REEL
22. TAKE ME HOME, COUNTRY ROADS
23. THIS OLD GUITAR
24. CALYPSO (encore)

On the next page you'll find an overview of all the songs the John Adams Band is able to perform. ***Songs can/may be requested upon booking the show!***

COMPLETE SONG REPERTOIRE

1. A Country Girl in Paris
2. A Song for All Lovers
3. Alaska and Me
4. Amazon
5. Annie's Song
6. Back Home Again
7. Boy From the Country
8. Calypso
9. Catch Another Butterfly
10. Dancing with the Mountains
11. Darcy Farrow
12. Deal with the Ladies
13. Dreamland Express
14. Druthers
15. Durango Mountain Caballero
16. Eagles & Horses
17. Eclipse
18. Falling Leaves
19. Falling Out of Love
20. Farewell Andromeda
21. Flight (The Higher We Fly)
22. Fly Away
23. Follow Me
24. For Baby (For Bobbie)
25. For You
26. Foxfire Suite
27. Goodbye Again
28. Grandma's Feather Bed
29. Heart to Heart
30. Higher Ground
31. Homegrown Tomatoes
32. How Can I Leave You Again
33. How Mountain Girls Can Love
34. I Can't Escape
35. I Guess He'd Rather Be In Colorado
36. I Want To Live
37. I'm Sorry
38. Is It Love
39. It Amazes Me
40. It's A Sin to Tell A Lie
41. Kissing You Goodbye
42. Leaving On A Jet Plane
43. Let Us Begin
44. Like A Sad Song
45. Love is the Master
46. Matthew
47. Me & My Uncle
48. My Sweet Lady
49. Perhaps Love
50. Poems, Prayers & Promises
51. Ponies
52. Rhymes & Reasons
53. Rocky Mountain High
54. Saturday Night in Toledo, Ohio
55. Seasons of the Heart
56. Shanghai Breezes
57. Sing Australia
58. Some Days are Diamonds
59. Starwood in Aspen
60. Sunshine On My Shoulders
61. Sweet Surrender
62. Take Me Home, Country Roads
63. Thank God I'm a Country Boy
64. The Ballad of St. Anne's Reel
65. The Eagle & The Hawk
66. The Flower that Shattered the Stone
67. The Gift You Are
68. This Old Guitar
69. Thought of You
70. Today
71. When I'm 64
72. Whispering Jesse
73. Wild Montana Skies
74. Windsong
75. Yellowstone



Company Information

It will be our pleasure to help you make your event an unforgettable experience with our JOHN DENVER “The Tribute” show. Please, contact us in case you have any questions or if you would like to discuss further options and details. Our information is:

BLUE TULIP MUSIC, LLC

P.O. Box 430

Eastlake, CO 80614

U.S.A.

Office: +1 (970) 672 - 4366

Mobile: +1 (970) 948 - 7032

Fax: +1 (303) 474 - 4657

E-mail: BlueTulipMusic@Comcast.net

Web site: www.JohnAdamsMusic.com