

BHAC SUBMISSION | 2017.04.26

# JOHN JEFFRIES HOTEL

**HACIN + ASSOCIATES**  
500 HARRISON AVE. STUDIO 4F  
BOSTON MA 02118  
P 617.426.0077  
WWW.HACIN.COM @HACINASSOCIATES

© 2017 HACIN ARCHITECTS LLC ALL RIGHTS RESERVED.





## SITE LOCUS

JOHN JEFFRIES HOTEL | BHAC SUBMISSION | 2017.04.26 | PG 2

© 2017 HACIN ARCHITECTS LLC ALL RIGHTS RESERVED.





POSTCARD VIEW, 1890'S



PHOTO, 1909



PUBLICATION, 1909



1874 HOPKINS MAP OVERLAY



PHOTO, 1924



AERIAL, 1931



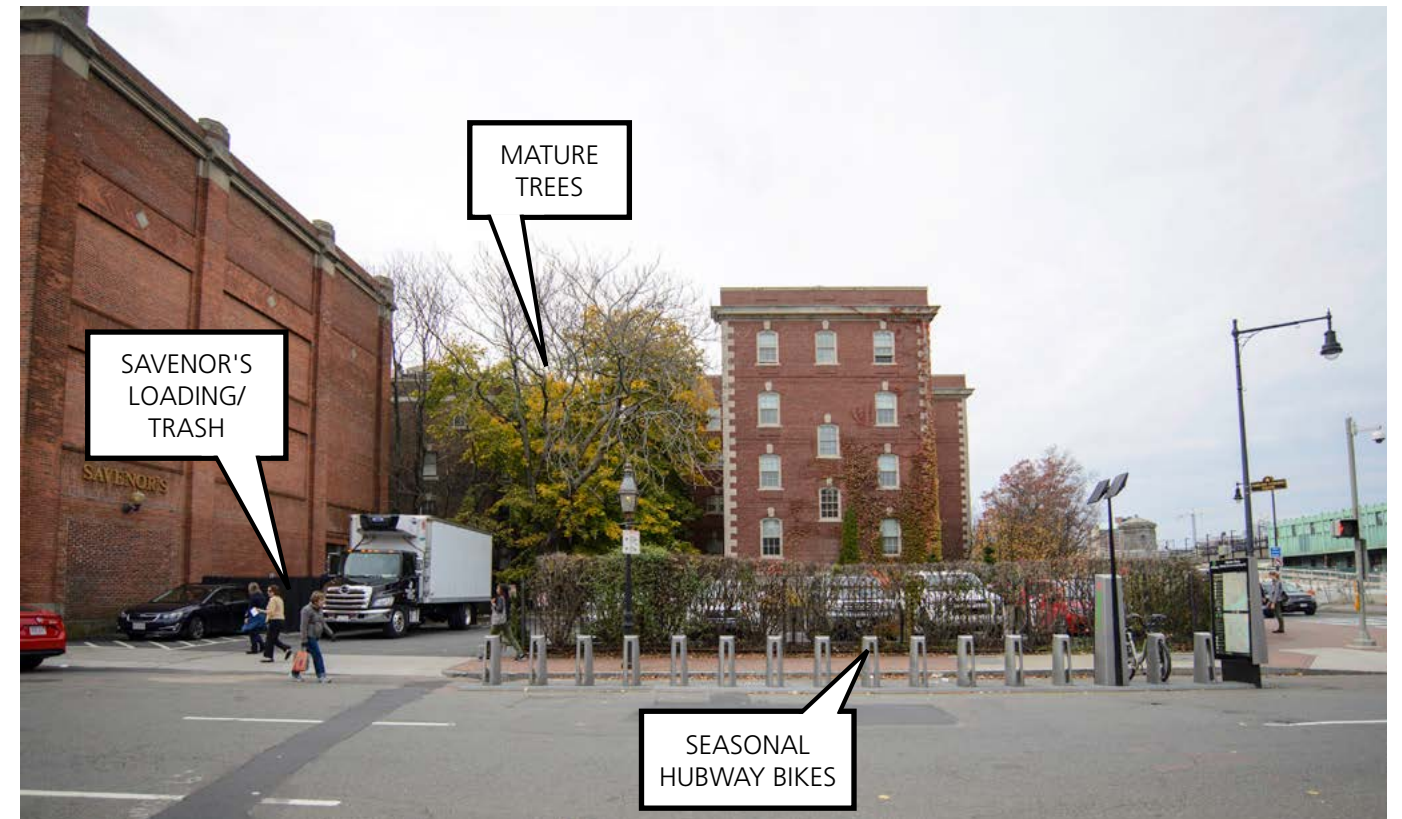
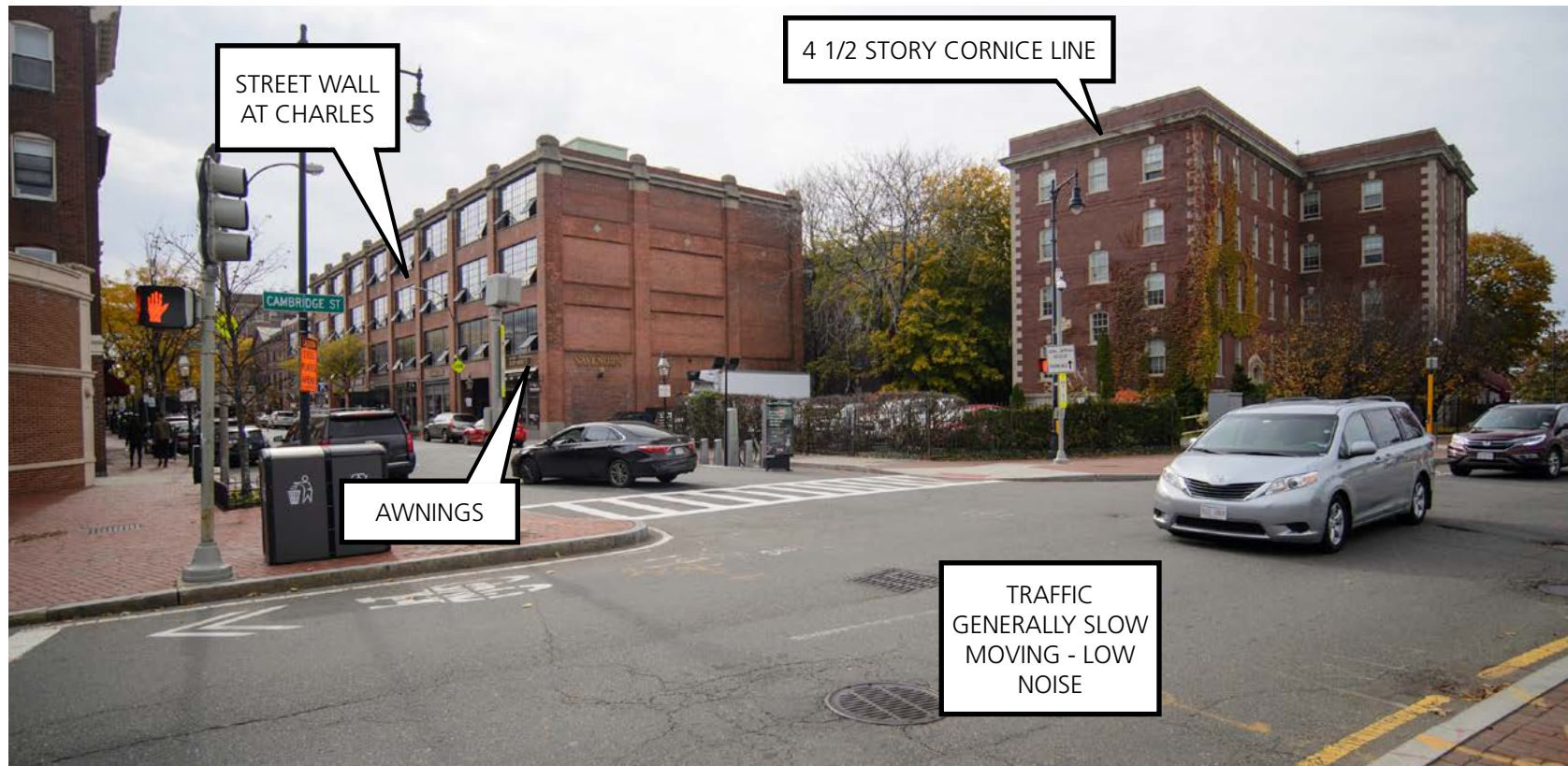
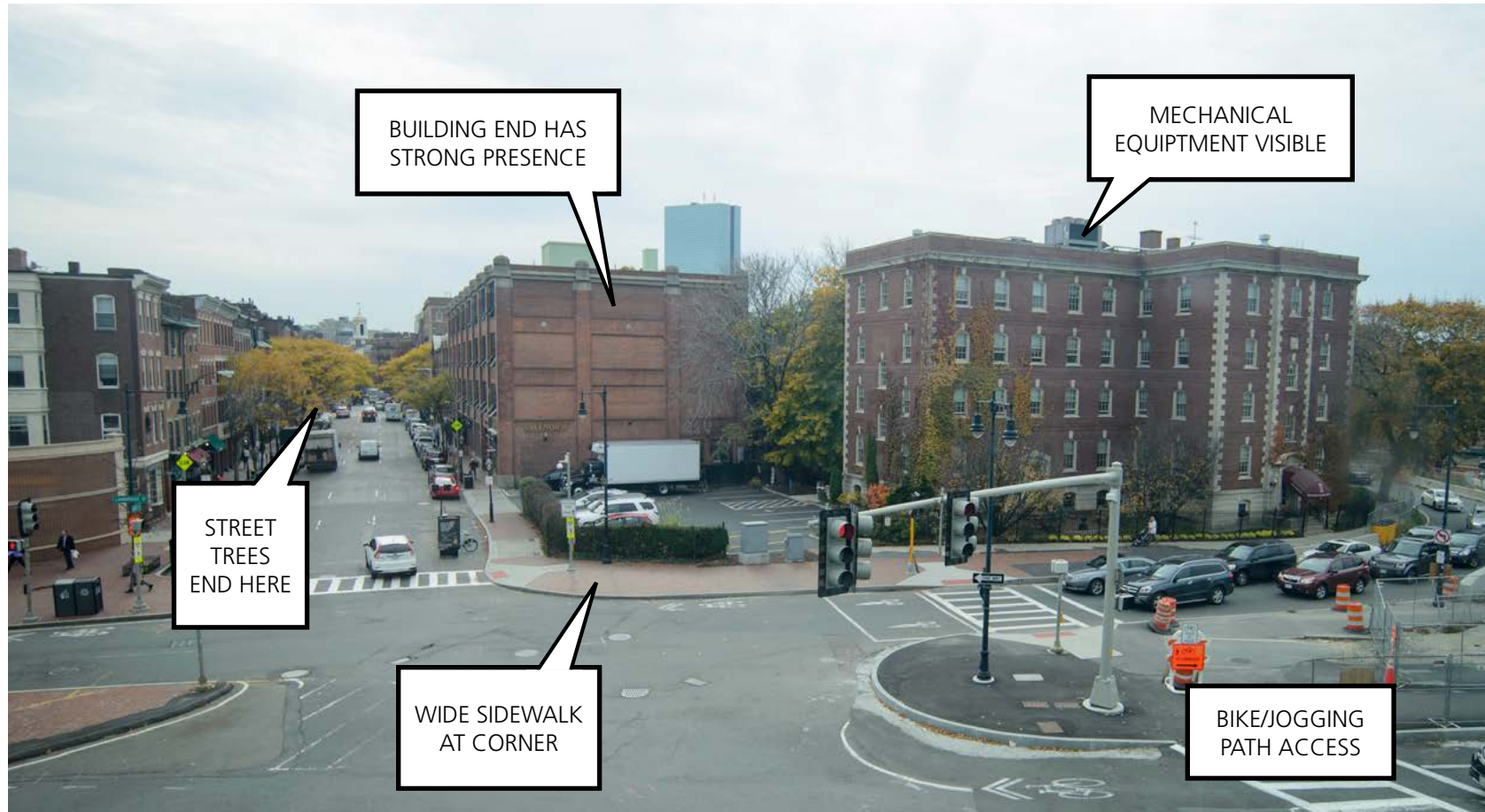
ESPLANADE, 1935

## SITE HISTORY

JOHN JEFFRIES HOTEL | BHAC SUBMISSION | 2017.04.26 | PG 3

© 2017 HACIN ARCHITECTS LLC ALL RIGHTS RESERVED.



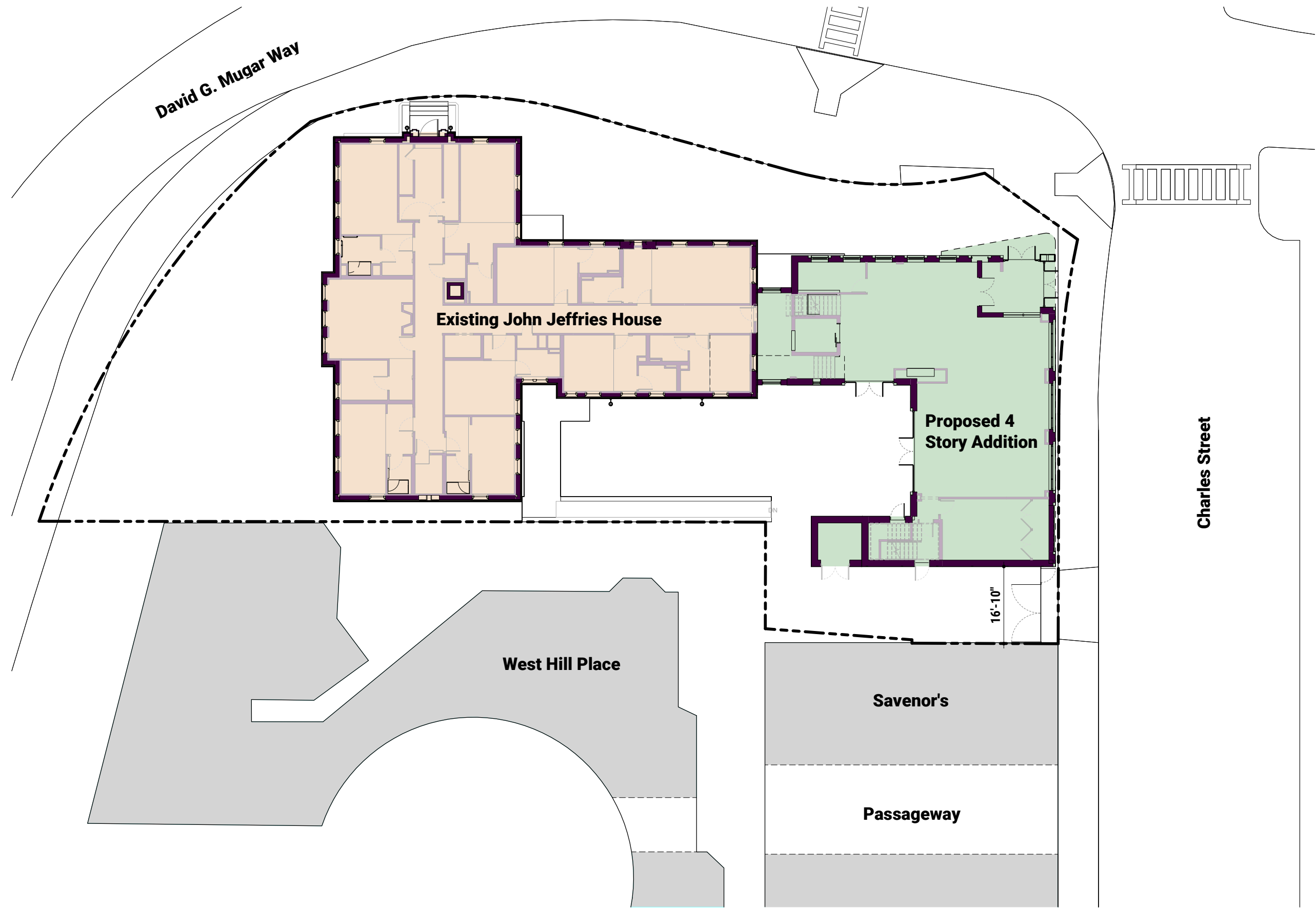


**SITE OBSERVATIONS**

JOHN JEFFRIES HOTEL | BHAC SUBMISSION | 2017.04.26 | PG 4

© 2017 HACIN ARCHITECTS LLC ALL RIGHTS RESERVED.



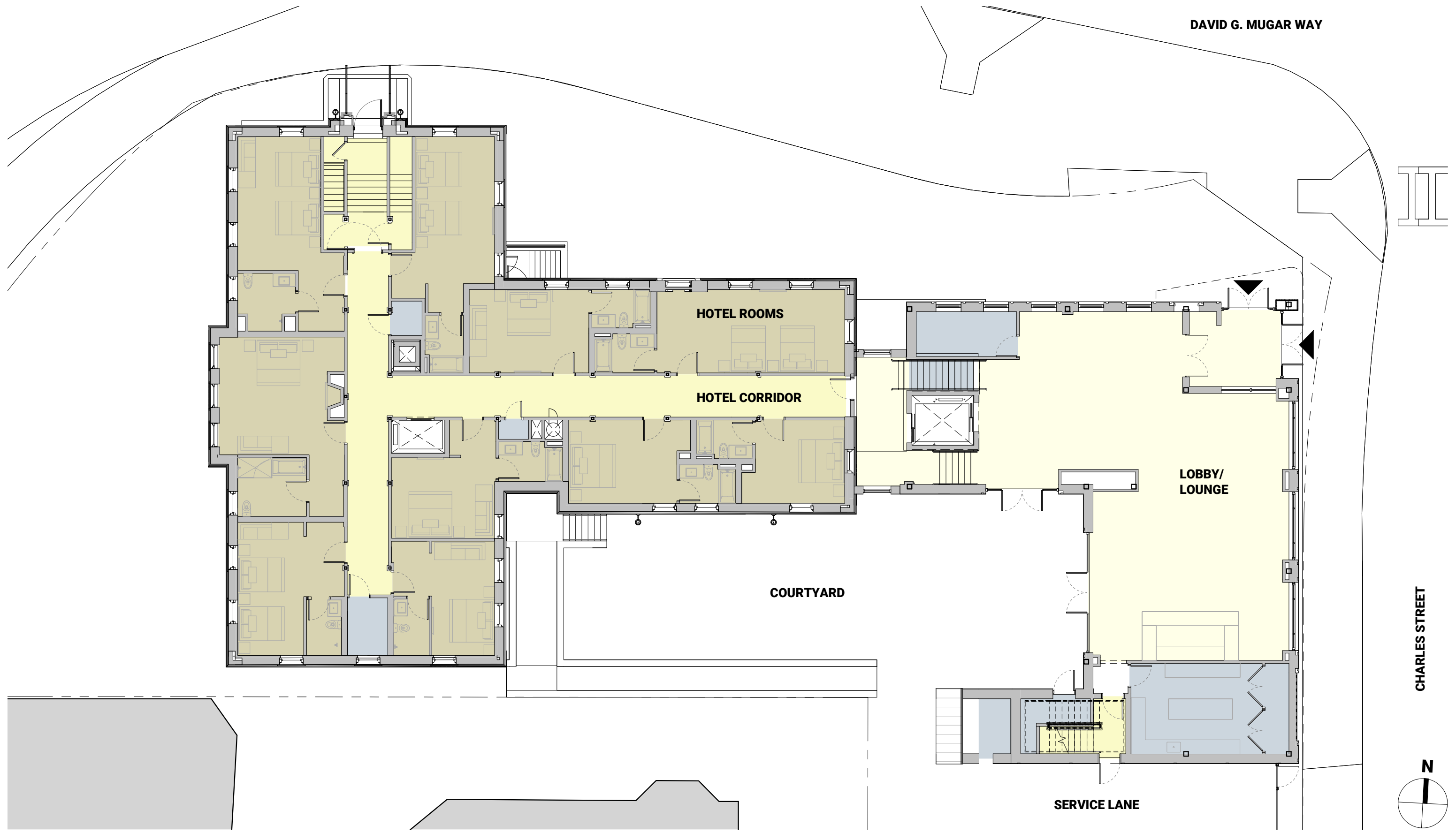


**SITE DIAGRAM**

JOHN JEFFRIES HOTEL | BHAC SUBMISSION | 2017.04.26 | PG 5

© 2017 HACIN ARCHITECTS LLC ALL RIGHTS RESERVED.



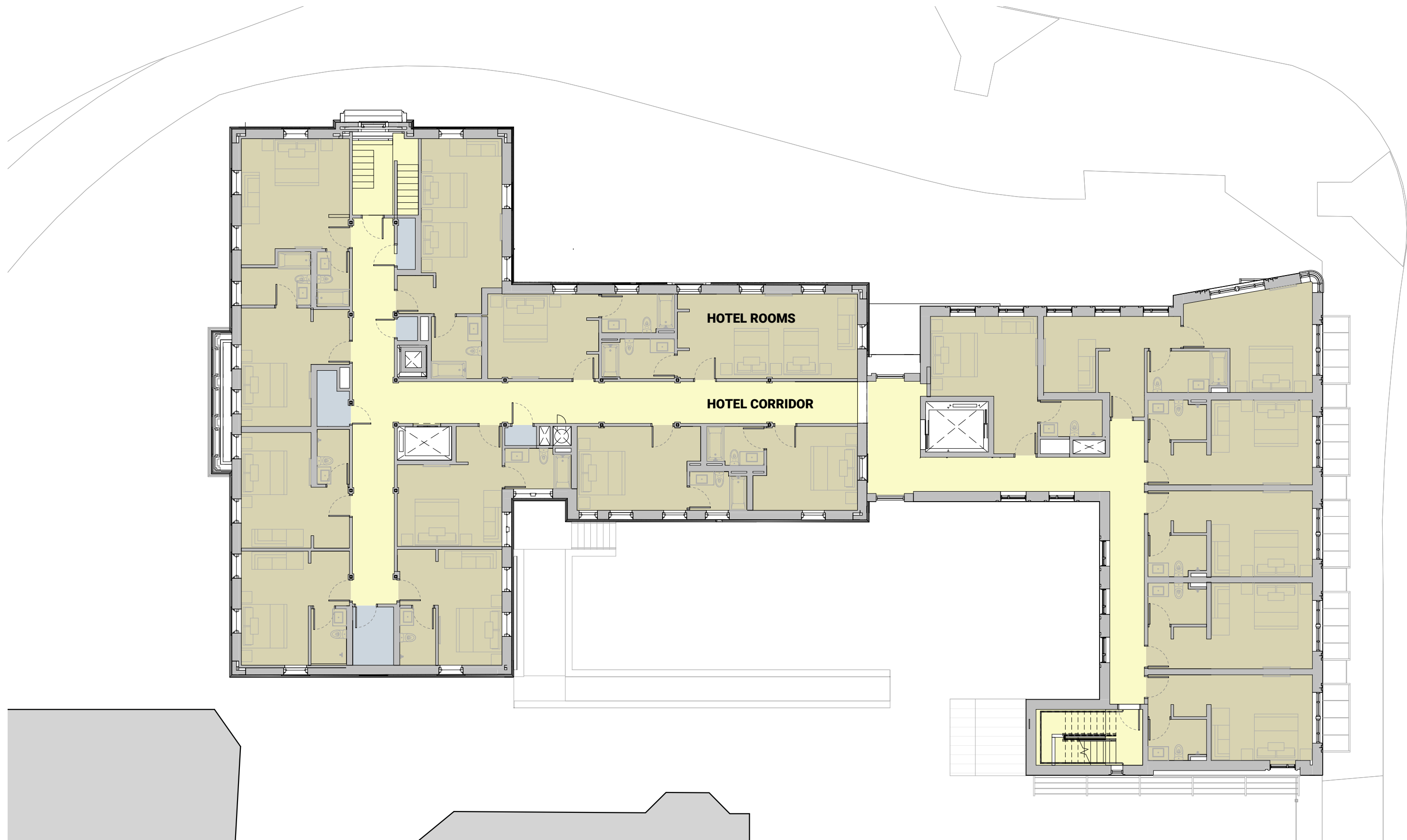


**LOBBY FLOOR PLAN**

JOHN JEFFRIES HOTEL | BHAC SUBMISSION | 2017.04.26 | PG 6

© 2017 HACIN ARCHITECTS LLC ALL RIGHTS RESERVED.

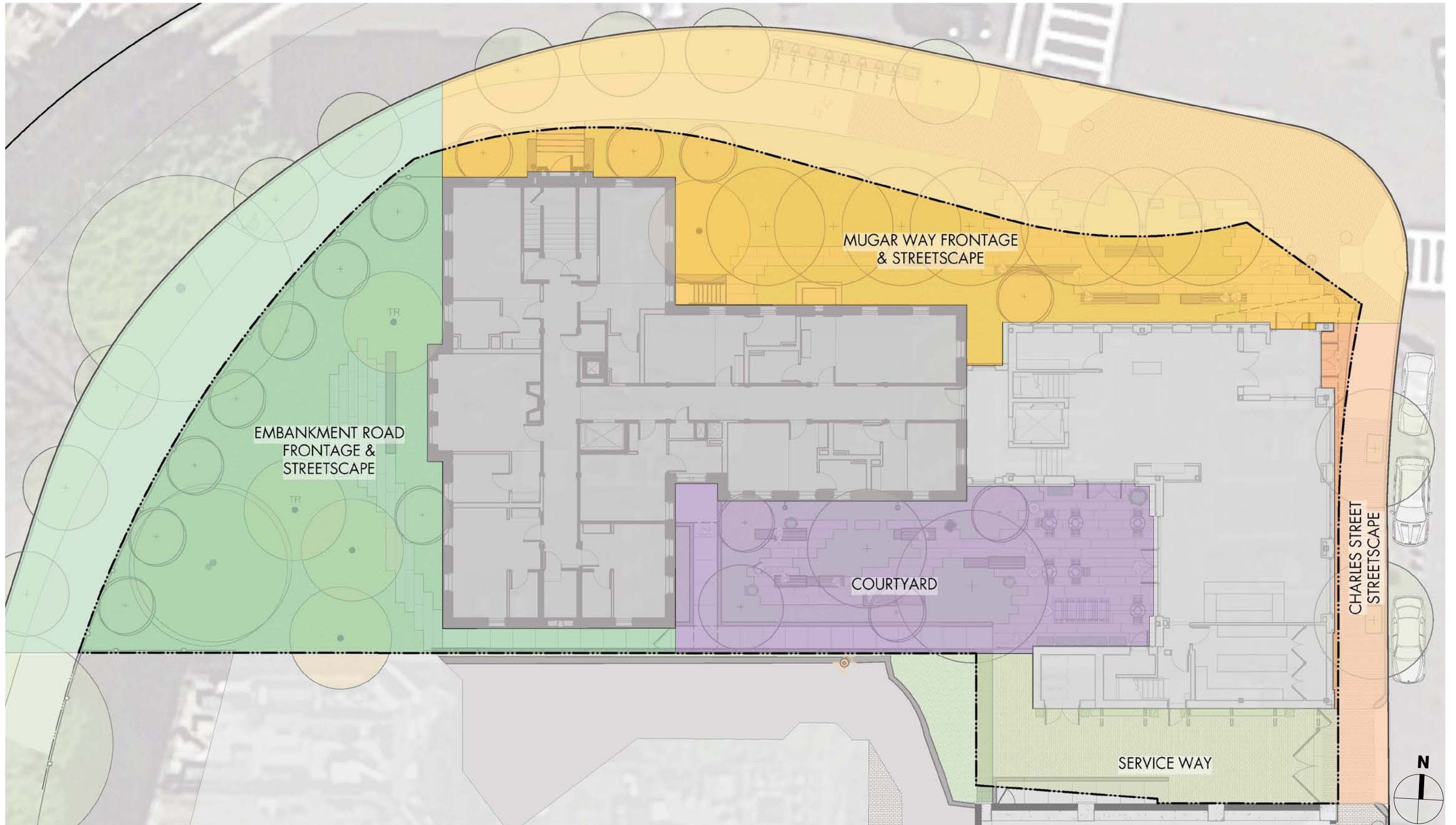




**TYPICAL UPPER FLOOR PLAN**  
JOHN JEFFRIES HOTEL | BHAC SUBMISSION | 2017.04.26 | PG 7

© 2017 HACIN ARCHITECTS LLC ALL RIGHTS RESERVED.





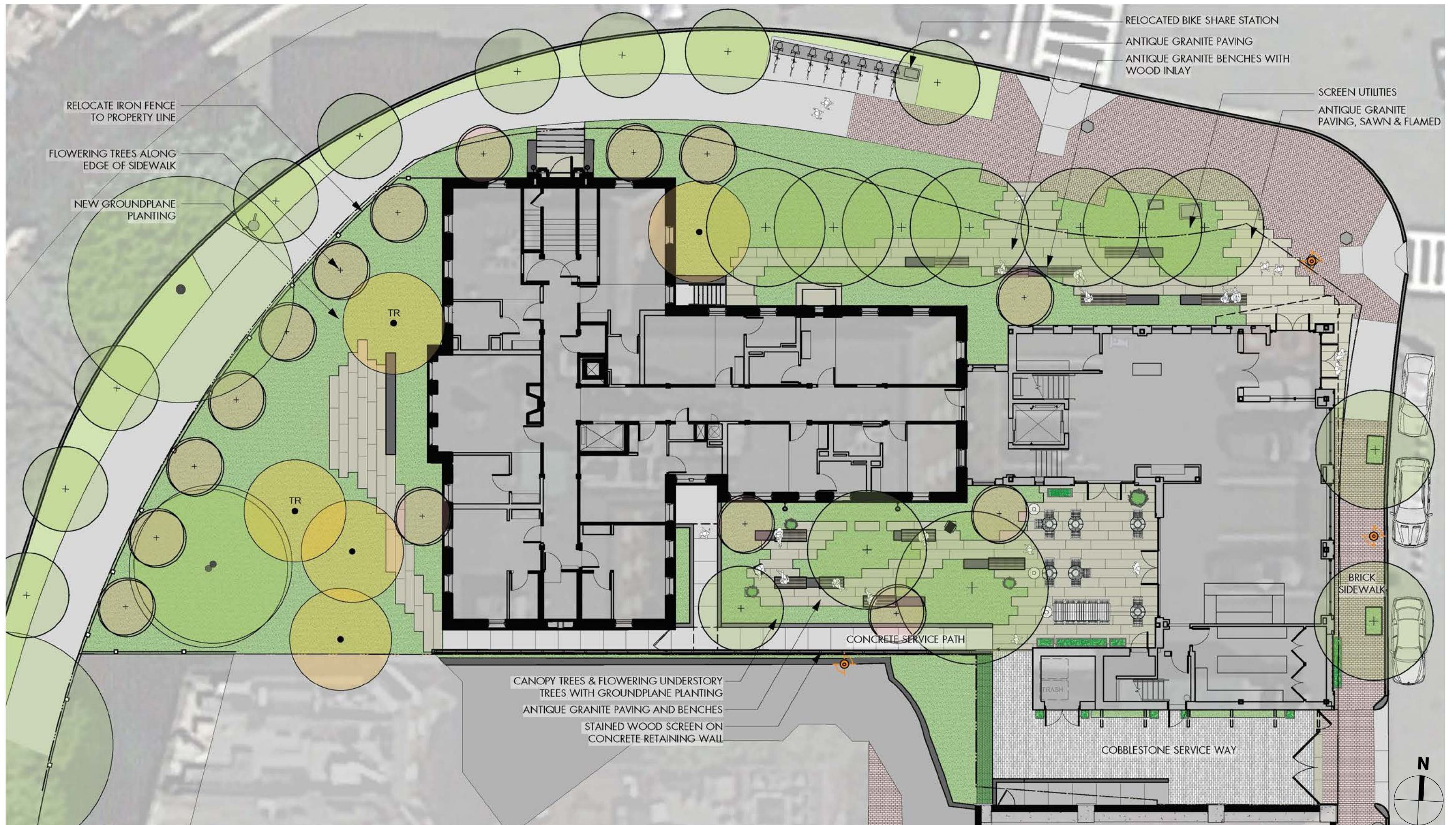
**LANDSCAPE DIAGRAM**

JOHN JEFFRIES HOTEL | BHAC SUBMISSION | 2017.04.26 | PG 8

© 2017 HACIN ARCHITECTS LLC ALL RIGHTS RESERVED.







# LANDSCAPE PLAN

JOHN JEFFRIES HOTEL | BHAC SUBMISSION | 2017.04.26 | PG 9

© 2017 HACIN ARCHITECTS LLC ALL RIGHTS RESERVED.





EAST ELEVATION

**BUILDING ELEVATIONS**

JOHN JEFFRIES HOTEL | BHAC SUBMISSION | 2017.04.26 | PG 10

© 2017 HACIN ARCHITECTS LLC ALL RIGHTS RESERVED.





NORTH ELEVATION

**BUILDING ELEVATIONS**

JOHN JEFFRIES HOTEL | BHAC SUBMISSION | 2017.04.26 | PG 11

© 2017 HACIN ARCHITECTS LLC ALL RIGHTS RESERVED.





SOUTH ELEVATION

**BUILDING ELEVATIONS**

JOHN JEFFRIES HOTEL | BHAC SUBMISSION | 2017.04.26 | PG 12

© 2017 HACIN ARCHITECTS LLC ALL RIGHTS RESERVED.





SECTION AT COURTYARD LOOKING NORTH



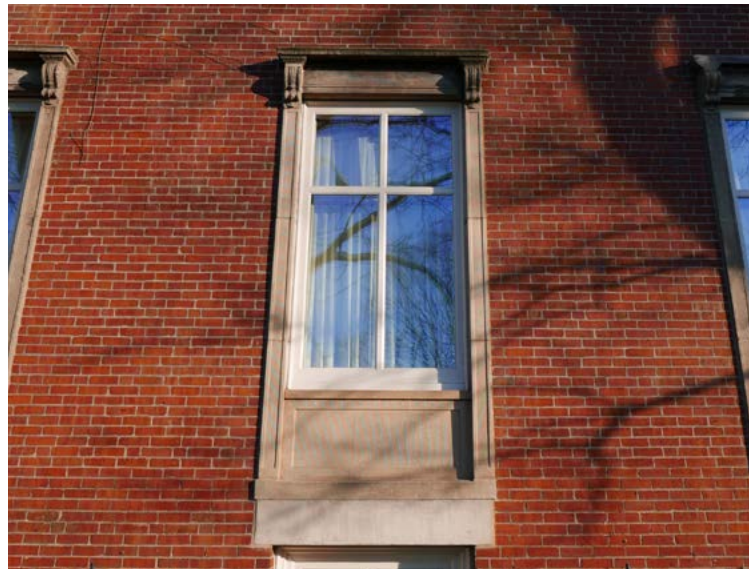
SECTION AT COURTYARD LOOKING EAST

**BUILDING ELEVATIONS**

JOHN JEFFRIES HOTEL | BHAC SUBMISSION | 2017.04.26 | PG 13

© 2017 HACIN ARCHITECTS LLC ALL RIGHTS RESERVED.





BRICK PATTERN

FRAMED WINDOWS

ORNAMENTAL METALWORK

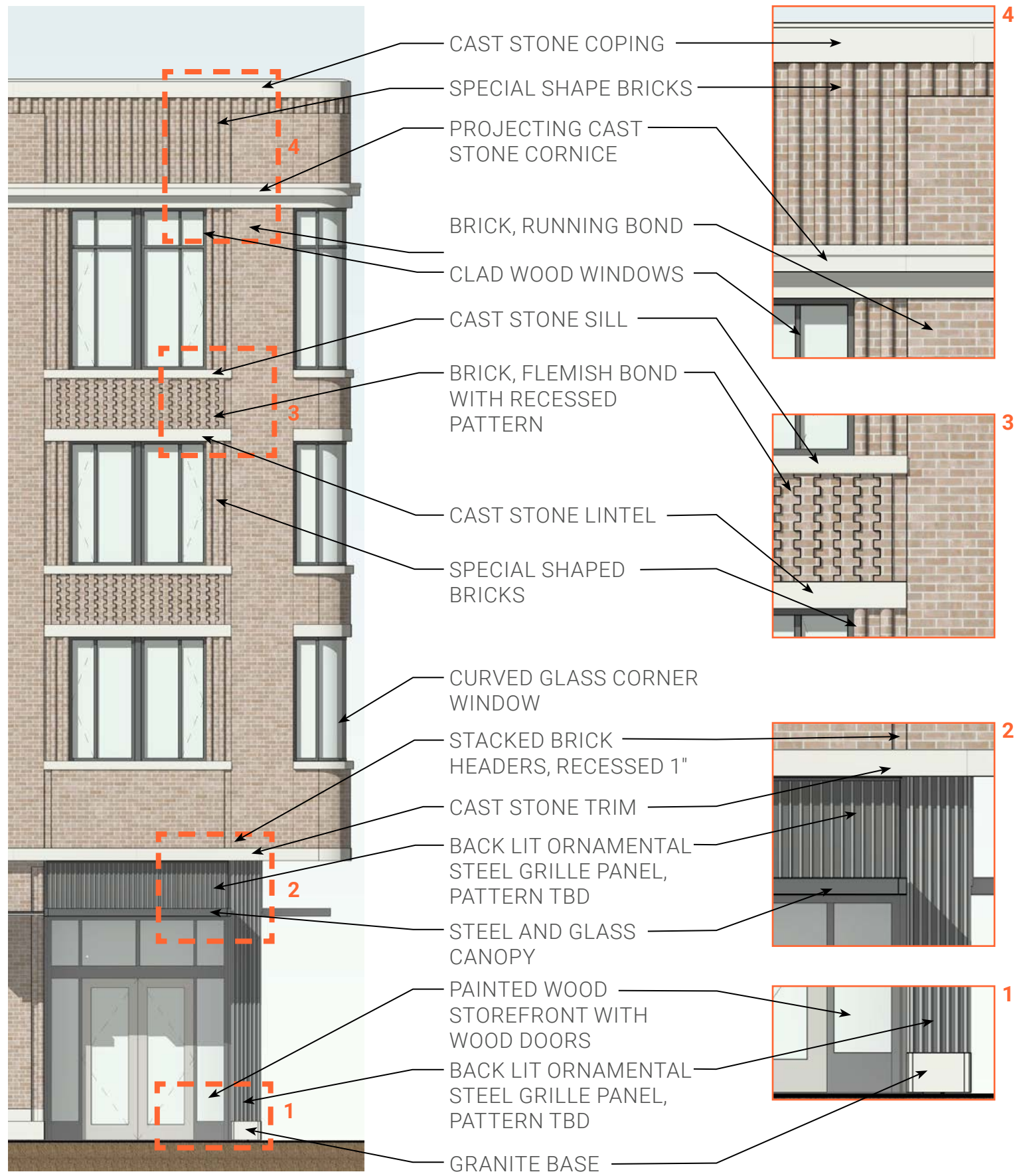
STEEL & GLASS CANOPY

## BEACON HILL DETAIL PRECEDENTS

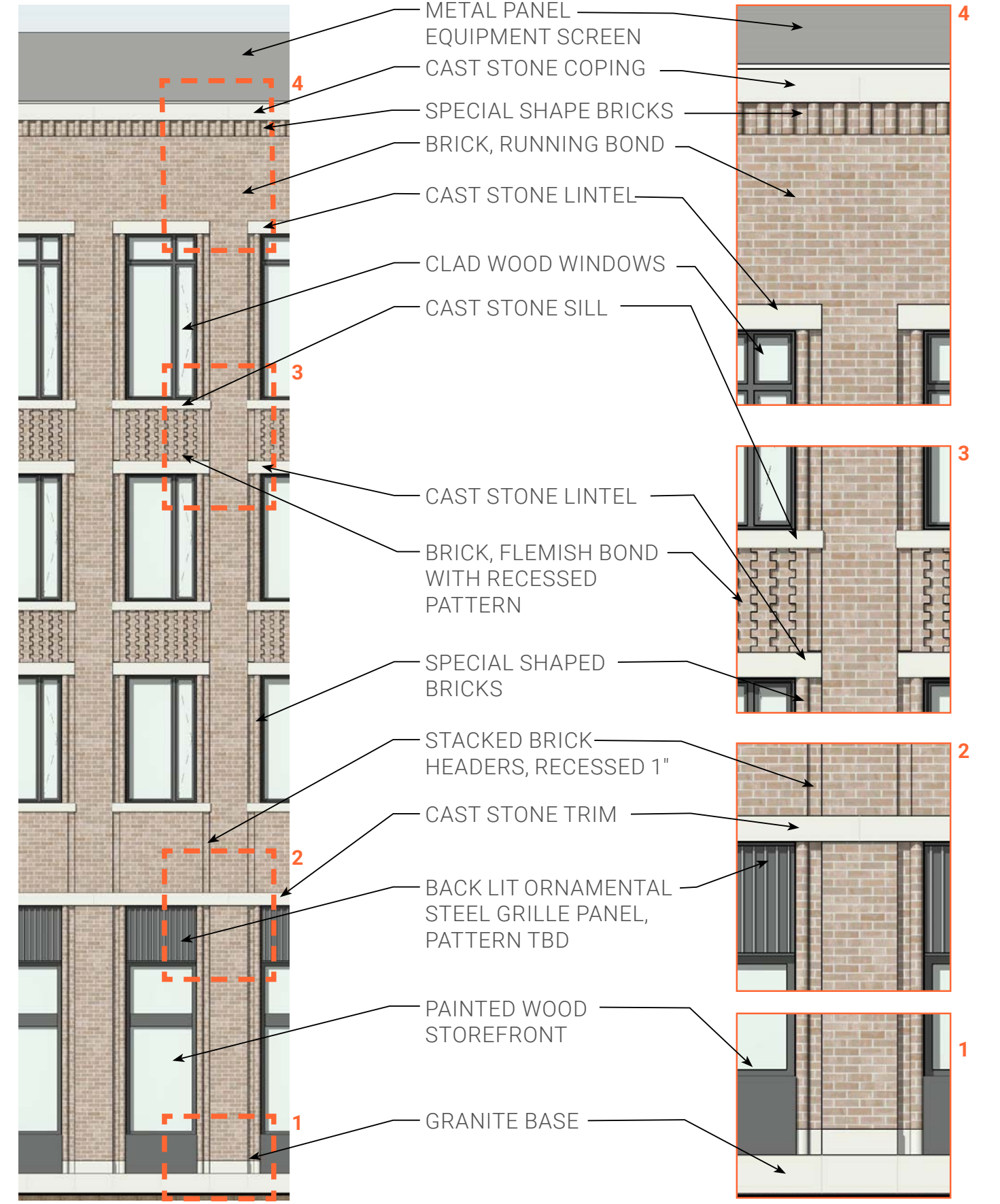
JOHN JEFFRIES HOTEL | BHAC SUBMISSION | 2017.04.26 | PG 14

© 2017 HACIN ARCHITECTS LLC ALL RIGHTS RESERVED.





EAST FACADE



NORTH FACADE

**ELEVATION DETAILS**

JOHN JEFFRIES HOTEL | BHAC SUBMISSION | 2017.04.26 | PG 15

© 2017 HACIN ARCHITECTS LLC ALL RIGHTS RESERVED.





**VIEW FROM MUGAR WAY**

JOHN JEFFRIES HOTEL | BHAC SUBMISSION | 2017.04.26 | PG 16

© 2017 HACIN ARCHITECTS LLC ALL RIGHTS RESERVED.







**VIEW FROM LONGFELLOW BRIDGE CROSSWALK**

JOHN JEFFRIES HOTEL | BHAC SUBMISSION | 2017.04.26 | PG 17

© 2017 HACIN ARCHITECTS LLC ALL RIGHTS RESERVED.





**VIEW AT CORNER OF CHARLES & CAMBRIDGE STREETS**

JOHN JEFFRIES HOTEL | BHAC SUBMISSION | 2017.04.26 | PG 18

© 2017 HACIN ARCHITECTS LLC ALL RIGHTS RESERVED.





**VIEW FROM CHARLES STREET**

JOHN JEFFRIES HOTEL | BHAC SUBMISSION | 2017.04.26 | PG 19

© 2017 HACIN ARCHITECTS LLC ALL RIGHTS RESERVED.





**VIEW OF CHARLES STREET STOREFRONTS**

JOHN JEFFRIES HOTEL | BHAC SUBMISSION | 2017.04.26 | PG 20

© 2017 HACIN ARCHITECTS LLC ALL RIGHTS RESERVED.





**VIEW OF SERVICE LANE**

JOHN JEFFRIES HOTEL | BHAC SUBMISSION | 2017.04.26 | PG 21

© 2017 HACIN ARCHITECTS LLC ALL RIGHTS RESERVED.





## VIEW OF CORNER ENTRANCE

JOHN JEFFRIES HOTEL | BHAC SUBMISSION | 2017.04.26 | PG 22

© 2017 HACIN ARCHITECTS LLC ALL RIGHTS RESERVED.





**AERIAL VIEW OF COURTYARD**

JOHN JEFFRIES HOTEL | BHAC SUBMISSION | 2017.04.26 | PG 23

© 2017 HACIN ARCHITECTS LLC ALL RIGHTS RESERVED.





**VIEW OF COURTYARD TOWARD WEST HILL PLACE**

JOHN JEFFRIES HOTEL | BHAC SUBMISSION | 2017.04.26 | PG 24

© 2017 HACIN ARCHITECTS LLC ALL RIGHTS RESERVED.







**VIEW ACROSS CAMBRIDGE STREET**

JOHN JEFFRIES HOTEL | BHAC SUBMISSION | 2017.04.26 | PG 25

© 2017 HACIN ARCHITECTS LLC ALL RIGHTS RESERVED.

