



JTAG Debugger

- Support for a wide range of on-chip debug interfaces
- Easy high-level and assembler debugging
- Interface to all compilers
- Fast download
- RTOS awareness
- Interface to all hosts
- Display of internal and external peripherals at a logical level
- Flash programming
- Hardware breakpoints and trigger (if supported by chip)
- Trace extension available
- Multiprocessor/multicore debugging
- Software trace
- Virtual analyzer
- USB, Ethernet or Parallel Interface

The Lauterbach product TRACE32-ICD supports a wide range of on-chip debug interfaces. The hardware for the debugger is universal and allows to interface different target processors by simply changing the debug cable and the software.

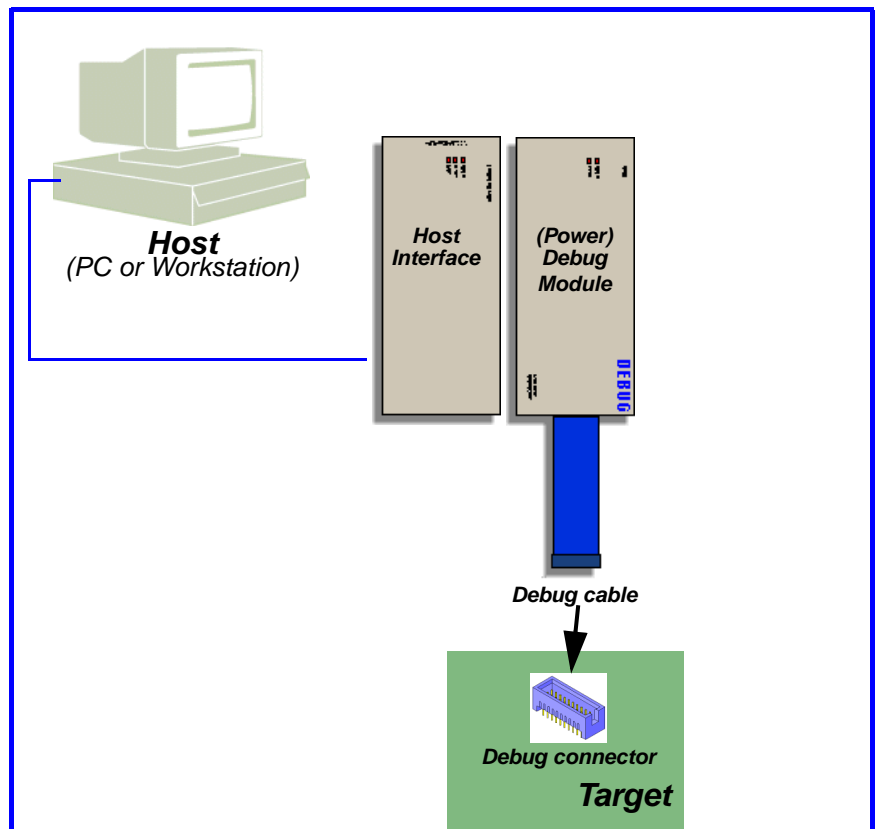
System Architecture

Introduction

The TRACE32 In-Circuit Debuggers are highly cost effective tools for debugging on assembler or HLL level.

The ICD-Debugger are mainly used as stand-alone debugger on a PC or workstation. But they are also offered as an extension to the In-Circuit Emulator

TRACE32-ICD Standard



Host Interfaces

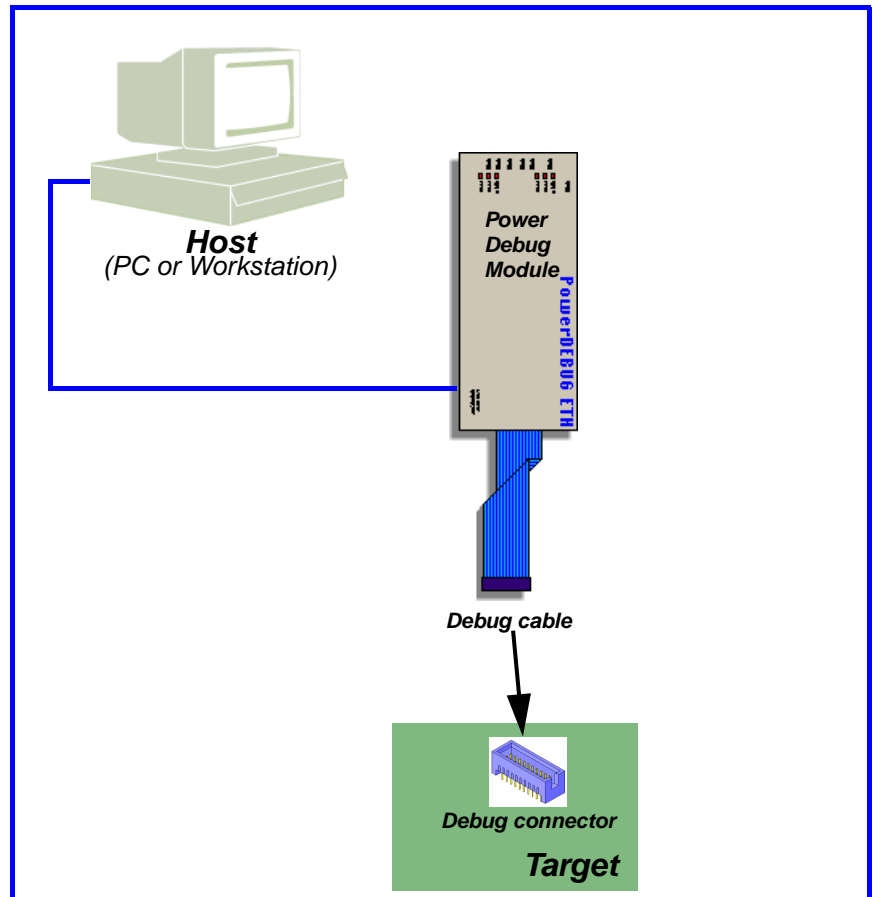
- LPT
- ISA Card
- Ethernet

(Power) Debug Module

Universal debugger hardware for all architectures

CPU specific Debug Cable

TRACE32-ICD PowerDebug



Power Debug Module

Universal debugger hardware for all architectures. Ethernet or USB interface included

CPU specific Debug Cable

Multiprocessor Debugging

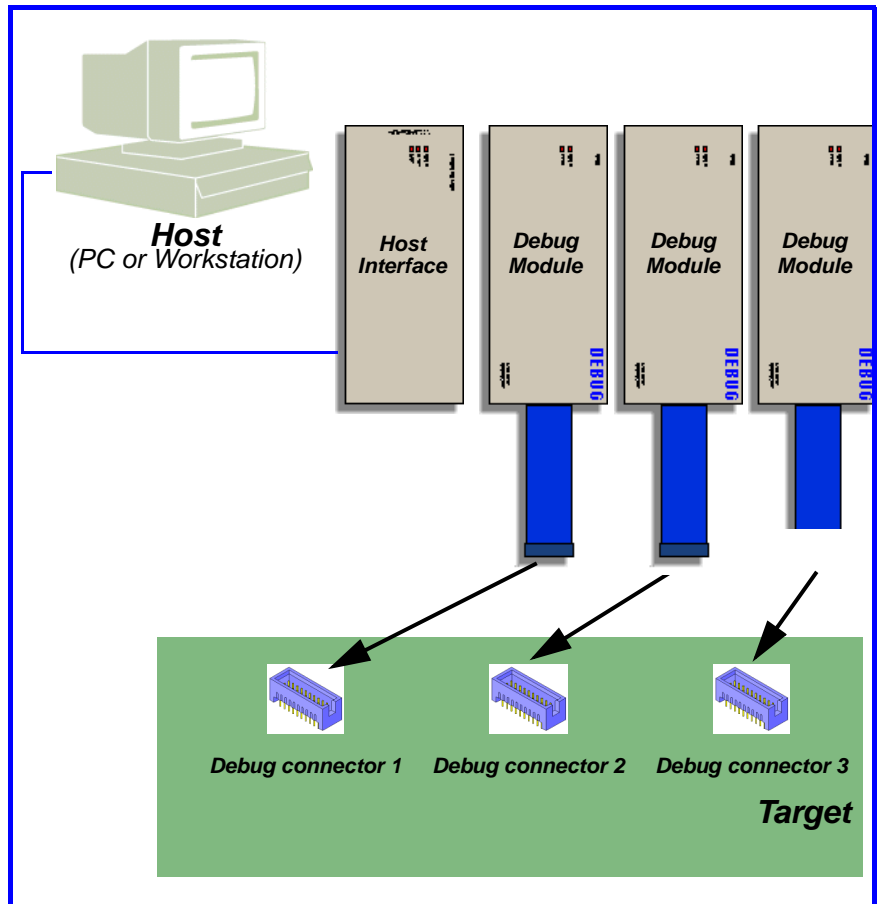
A maximum of 4 debuggers can be connected to a host interface to configure a multiprocessor development environment. It is of course also possible to use 2 debuggers and 2 trace modules. What hardware is controlled by which TRACE32 software component is defined via a configuration file.

Start/stop synchronization

If several processors are to be started and stopped simultaneously as far as possible it is necessary to define which functions as master and which as slave in the overall configuration. The system can also be set so that all processors double as master and slave so when any processor is started all other processors are started and when any pro-

cessor is stopped all others are stopped. A synchronous start can be carried out within about 10 μ s. Synchronous stopping, for example at a breakpoint can be implemented exactly. As a basic requirement for this, however, the debug interface of the processor used

must have a trigger input and a trigger output. If this is not the case, asynchronous stopping must be implemented by software means which takes correspondingly longer.



Multicore Debugging

The term multicore debugging is applied to the testing of multiple cores on a chip.

If there are several cores integrated on a chip and each core has its own debug interface the same hardware and software configuration can be used as for multiprocessor debugging.

It's a different picture if all cores are driven via the same debug interface in order to save pins. It is possible, for example to daisy-chain several cores that run via the same debug port. This is a popular solution at present for chips with ARM cores since this arrangement is very easy to implement with the JTAG interface. In this case the debugger requires the capability to work with a specific core in the chain and to ensure that the control sequences are passed through by the other cores. In the straightforward event that the developer only wants to work with a single core the position of the core in the chain can be set by software means.

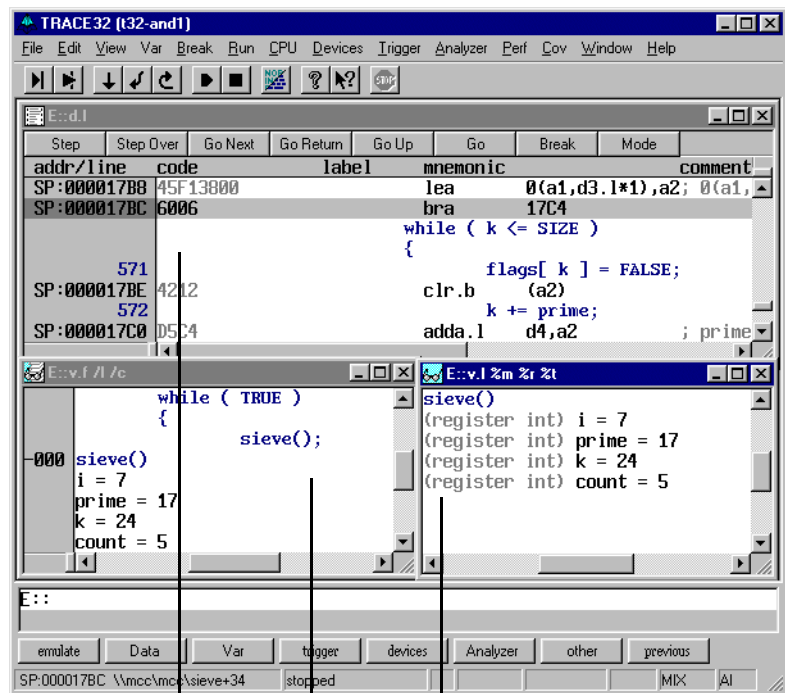
If more than one core are to be tested simultaneously several debug modules are needed as in case of multiprocessor debugging. There must be several debug connectors with the same JTAG signals on the target system. Alternatively, it is also possible to use an adapter that splits up the JTAG interface for several debuggers.

Since several debugger now use the same debug port, steps must be taken to ensure that only one debugger accesses the debug port at any time. This can be automated by the debug task on the host controlling who has exclusive access to the debug port through the use of a semaphore system.

There are of course other configuration options for multiple cores in a chip apart from daisy chaining. For more information on this topic contact our technical support.

Software Concept Debugger

Symbolic Debugging



Local variables of the current function

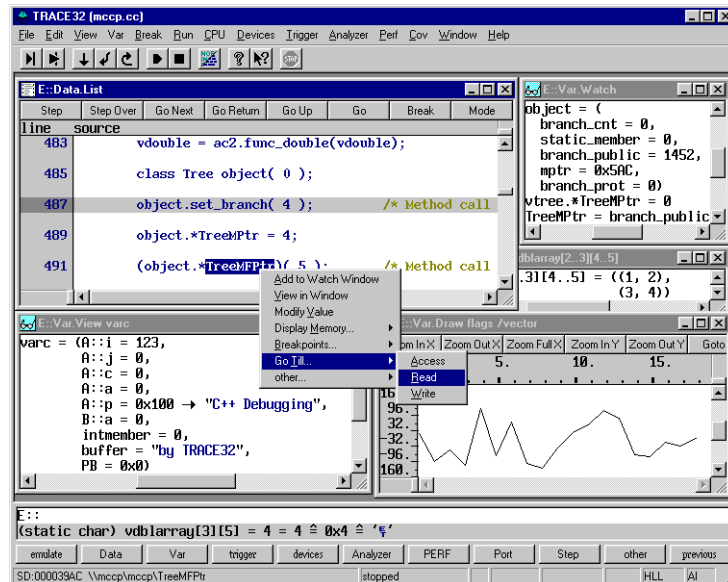
Stack frame to display function nesting

Source listing in mixed mode

A hierarchical symbol database enables structured symbolic debugging. Symbol names can be up to 255 significant characters long and can be used to show single program

addresses, module names and memory classes. The disassembler can use the symbols for labels and/or operands. Demangling for C++ signatures is supported.

High-Level Language Debugging



TRACE32 can directly load the output of all standard compilers for C, C++, JAVA, Pascal, Modula2, PEARL and ADA from most compiler vendors. Program display and debugging can be done in assembler, high-level or in a mixture of both. It is possible to con-

struct both assembler and high-level windows on the screen simultaneously. All variable types specific to the high-level language can be displayed and modified. Addresses can be absolute, relative or line number based.

Debugging

The debugger uses the following breakpoint implementations to stop the program execution at a certain instruction:

- unlimited number of software breakpoints for code in RAM
- a limited number of so-called onchip breakpoints for code in ROM/FLASH

The onchip breakpoints can also be used to stop the program execution after a read/write access to a specific memory address.

The number of available onchip breakpoints depends on the resources provided by the CPU used.

Advanced breakpoints

TRACE32-ICD provides also a simple way to set complex break conditions:

- Setting of breakpoints to the reading and writing of specific data values
- Linking the breakpoint with a condition
- Linking the breakpoint with commands that are executed whenever the breakpoint is reached
- Spot breakpoints on data accesses

A combination of all 4 new features is also possible.



RTOS Awareness

The In-Circuit Debuggers provide display functions, closely mirroring the command set of the integral debugger of the RTOS. The system resources e.g. tasks, objects, partitions, queues, regions and semaphores can be dis-

played. These functions are also available if the integral debugger is not linked to the software.

magic	name	id	prio	mode	status	susp	parameters	ticks
00065310	IDLE	00010000	00	0000	Ready			
00065588	MEM1	00030000	30	0000	Wkafter			00000002
000656C4	MEM2	00040000	2F	0000	Running			
00065800	I01	00050000	1E	0002	Ready			
0006593C	I02	00060000	1E	0002	Ready			
00065A78	SRCE	00070000	80	0000	Ready	YES		
00065BB4	SINK	00080000	50	0000	Wkafter			00000001
00065CF0	NUMS	00090000	10	0002	Ready			
00065E2C	CHAR	000A0000	10	0002	Ready			

magic	name	id	prio	mode	status	susp	parameters	ticks
00065588	MEM1	00030000	30	0000	Wkafter			00000002

```

utr= 00000000 00000000 00000000 00000000 00000000 00000000 00000000 00000000
str= 00000000 00000000 00000000 00000000 00000000 00000000 00000000 00000000

initial pc = 000324C4 initial pri = 30
initial sp = 000FDC80 initial mode = 0000
asr addr = 00000000 asr mode = 0000
pending events = 00000000 pending asr = 00000000

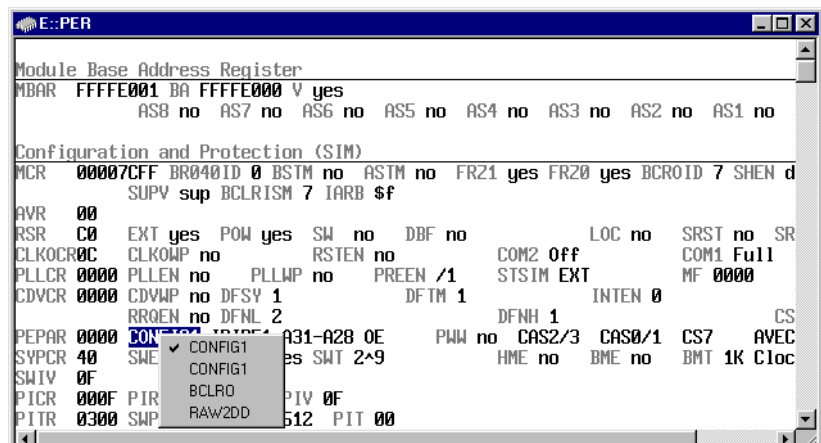
timers: NONE

```

Task list window and detailed window of one specific task

Peripherals

- Display of onchip peripherals
- User definable display of the onchip peripherals
- Definition is done interactive supported by softkeys
- Pull down menus for settings
- Additional description for each field
-



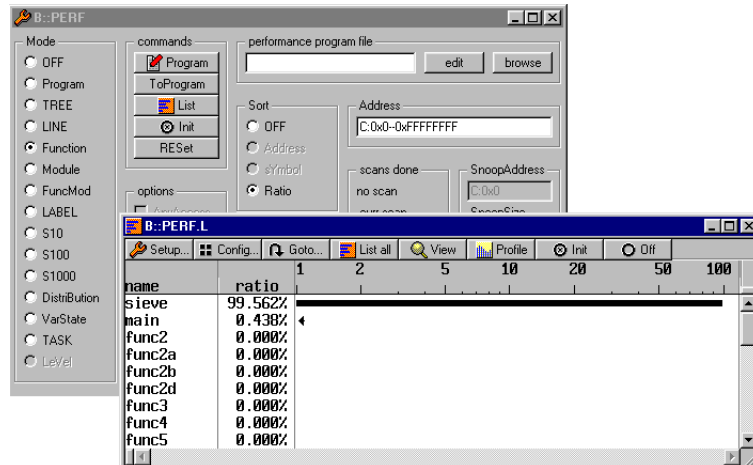
Flash Programming

address	type	width	state	unit
C:00000000--00007FFF	CMFFLASH	byte	program	1 (002FC800/00008000)
C:00008000--0000FFFF	CMFFLASH	byte	program	2 (002FC800/00008000)
C:00010000--00017FFF	CMFFLASH	byte	program	3 (002FC800/00008000)
C:00018000--0001FFFF	CMFFLASH	byte		4 (002FC800/00008000)
C:00020000--00027FFF	CMFFLASH	byte		5 (002FC800/00008000)
C:00028000--0002FFFF	CMFFLASH	byte		6 (002FC800/00008000)
C:00030000--0003FFFF	CMFFLASH	byte		7 (002FC800/00008000)

TRACE32 support the programming of external flash memory as well as the programming of internal flash memory

of microcontrollers. The programming can be controlled by the debugger or by a routine in the target system.

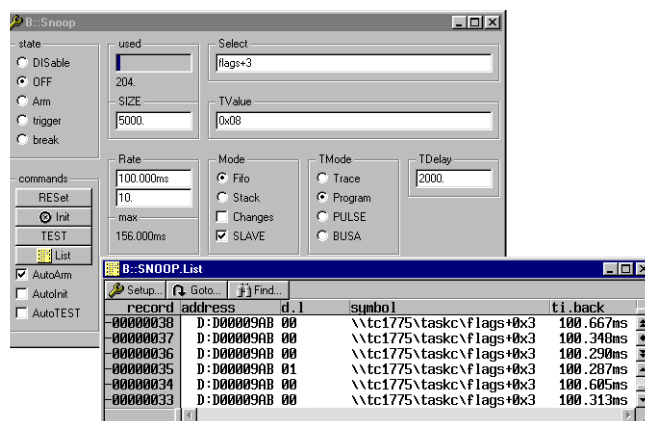
Performance Analysis



Virtual Analyzer

TRACE32-ICD provides the feature to monitor changes in selected data over a period of time. As a basic requirement for this feature, the debug interface of the CPU used must support to read the target memory while the program is running.

To monitor selected data the virtual analyzer reads out the corresponding memory cells in a fixed time pattern during the program run and transfers their contents to its virtual trace memory. Since the virtual trace is pure software it can be of any size.



Powerful Script Language

The TRACE32 batch language PRACTICE support automatic test, automatic system configurations and

the construction of command macros to expedite our development cycle.

GUI Customization

The TRACE32 user interface is open and allows to adapt menus, buttons and dialogue boxes intuitively to the customers need.

Supported Processors

CPU	ICE	FIRE	ICD DEBUG	ICD MONITOR	ICD TRACE	POWER INTEGRATOR	INSTRUCTION SIMULATOR
230			YES				YES
330			YES				YES
703500			YES				YES
703538			YES				YES
70F3111			YES		YES		YES
70F3134			YES				YES
70F3186			YES				YES
70F3187			YES				YES
70F3231			YES				YES
70F3231Y			YES				YES
70F3232			YES				YES
70F3232Y			YES				YES
70F3233			YES				YES
70F3233Y			YES				YES
70F3234			YES				YES
70F3234Y			YES				YES
70F3235			YES				YES
70F3235Y			YES				YES
70F3236			YES				YES
70F3236Y			YES				YES
70F3237			YES				YES
70F3237Y			YES				YES
70F3238			YES				YES
70F3238Y			YES				YES
70F3239			YES				YES
70F3239Y			YES				YES
70F3261			YES				YES
70F3261Y			YES				YES
70F3263			YES				YES
70F3263Y			YES				YES
70F3264			YES				YES
70F3264Y			YES				YES
70F3266			YES				YES
70F3266Y			YES				YES
70F3271			YES				YES
70F3271Y			YES				YES
70F3273			YES				YES

CPU	ICE	FIRE	ICD DEBUG	ICD MONITOR	ICD TRACE	POWER INTEGRATOR	INSTRUCTION SIMULATOR
70F3273Y			YES				YES
70F3274			YES				YES
70F3274Y			YES				YES
70F3276			YES				YES
70F3276Y			YES				YES
70F3281			YES				YES
70F3281Y			YES				YES
70F3283			YES				YES
70F3283Y			YES				YES
70F3284			YES				YES
70F3284Y			YES				YES
70F3286			YES				YES
70F3286Y			YES				YES
70F3288			YES				YES
70F3288Y			YES				YES
70F3318			YES				YES
70F3319			YES				YES
70F3320			YES				YES
70F3325			YES				YES
70F3333			YES				YES
70F3334			YES				YES
70F3335			YES				YES
70F3336			YES				YES
70F3340			YES				YES
70F3341			YES				YES
70F3342			YES				YES
70F3343			YES				YES
70F3344			YES				YES
70F3345			YES				YES
70F3346			YES				YES
70F3347			YES				YES
70F3348			YES				YES
70F3350			YES				YES
70F3351			YES				YES
70F3352			YES				YES
70F3353			YES				YES
70F3354			YES				YES
70F3355			YES				YES
70F3356			YES				YES
70F3357			YES				YES
70F3358			YES				YES
70F3364			YES				YES

CPU	ICE	FIRE	ICD DEBUG	ICD MONITOR	ICD TRACE	POWER INTEGRATOR	INSTRUCTION SIMULATOR
70F3365			YES				YES
70F3366			YES				YES
70F3367			YES				YES
70F3368			YES				YES
70F3370			YES				YES
70F3371			YES				YES
70F3372			YES				YES
70F3373			YES				YES
70F3374			YES				YES
70F3375			YES				YES
70F3376			YES				YES
70F3377			YES				YES
70F3378			YES				YES
70F3379			YES				YES
70F3380			YES				YES
70F3381			YES				YES
70F3382			YES				YES
70F3383			YES				YES
70F3384			YES				YES
70F3385			YES				YES
70F3402			YES				YES
70F3403			YES				YES
70F3416			YES				YES
70F3417			YES				YES
70F3420			YES				YES
70F3421			YES				YES
70F3422			YES				YES
70F3423			YES				YES
70F3424			YES				YES
70F3425			YES				YES
70F3426			YES				YES
70F3427			YES				YES
70F3440			YES				YES
70F3441			YES				YES
70F3461			YES				YES
70F3474			YES				YES
70F3475			YES				YES
70F3476			YES				YES
70F3477			YES				YES
70F3478			YES				YES
70F3479			YES				YES
70F3480			YES				YES

CPU	ICE	FIRE	ICD DEBUG	ICD MONITOR	ICD TRACE	POWER INTEGRATOR	INSTRUCTION SIMULATOR
70F3481			YES				YES
70F3482			YES				YES
70F3486			YES				YES
70F3487			YES				YES
70F3488			YES				YES
70F3502			YES				YES
70F3504			YES				YES
70F3506			YES				YES
70F3508			YES				YES
70F3522			YES				YES
70F3523			YES				YES
70F3524			YES				YES
70F3525			YES				YES
70F3526			YES				YES
70F3529			YES				YES
70F3530			YES				YES
70F3532			YES				YES
70F3548			YES				YES
70F3549			YES				YES
70F3550			YES				YES
70F3551			YES				YES
70F3552			YES				YES
70F3553			YES				YES
70F3554			YES				YES
70F3555			YES				YES
70F3556			YES				YES
70F3557			YES				YES
70F3558			YES				YES
70F3559			YES				YES
70F3560			YES				YES
70F3561			YES				YES
70F3562			YES				YES
70F3563			YES				YES
70F3564			YES				YES
70F3565			YES				YES
70F3566			YES				YES
70F3567			YES				YES
70F3568			YES				YES
70F3569			YES				YES
70F3570			YES				YES
70F3571			YES				YES
70F3572			YES				YES

CPU	ICE	FIRE	ICD DEBUG	ICD MONITOR	ICD TRACE	POWER INTEGRATOR	INSTRUCTION SIMULATOR
70F3573			YES				YES
70F3574			YES				YES
70F3575			YES				YES
70F3576			YES				YES
70F3577			YES				YES
70F3578			YES				YES
70F3579			YES				YES
70F3580			YES				YES
70F3581			YES				YES
70F3582			YES				YES
70F3583			YES				YES
70F3584			YES				YES
70F3585			YES				YES
70F3586			YES				YES
70F3587			YES				YES
70F3588			YES				YES
70F3589			YES				YES
70F3592			YES				YES
70F3700			YES				YES
70F3701			YES				YES
70F3702			YES				YES
70F3703			YES				YES
70F3704			YES				YES
70F3706			YES				YES
70F3707			YES				YES
70F3709			YES				YES
70F3710			YES				YES
70F3711			YES				YES
70F3712			YES				YES
70F3715			YES				YES
70F3716			YES				YES
70F3717			YES				YES
70F3718			YES				YES
70F3719			YES				YES
70F3720			YES				YES
70F3721			YES				YES
70F3722			YES				YES
70F3723			YES				YES
70F3724			YES				YES
70F3735			YES				YES
70F3736			YES				YES
70F3737			YES				YES

CPU	ICE	FIRE	ICD DEBUG	ICD MONITOR	ICD TRACE	POWER INTEGRATOR	INSTRUCTION SIMULATOR
70F3738			YES				YES
70F3739			YES				YES
70F3740			YES				YES
70F3741			YES				YES
70F3742			YES				YES
70F3743			YES				YES
70F3744			YES				YES
70F3745			YES				YES
70F3746			YES				YES
70F3747			YES				YES
70F3750			YES				YES
70F3752			YES				YES
70F3755			YES				YES
70F3757			YES				YES
70F3778			YES				YES
70F3779			YES				YES
70F3780			YES				YES
70F3781			YES				YES
70F3782			YES				YES
70F3783			YES				YES
70F3784			YES				YES
70F3785			YES				YES
70F3786			YES				YES
70F3787			YES				YES
70F3797			YES				YES
70F3798			YES				YES
70F3799			YES				YES
70F3800			YES				YES
70F3801			YES				YES
70F3802			YES				YES
70F3803			YES				YES
70F3804			YES				YES
70F3805			YES				YES
70F3806			YES				YES
70F3807			YES				YES
70F3808			YES				YES
70F3809			YES				YES
70F3810			YES				YES
70F3811			YES				YES
70F3812			YES				YES
70F3813			YES				YES
70F3814			YES				YES

CPU	ICE	FIRE	ICD DEBUG	ICD MONITOR	ICD TRACE	POWER INTEGRATOR	INSTRUCTION SIMULATOR
70F3815			YES				YES
70F3816			YES				YES
70F3817			YES				YES
70F3818			YES				YES
70F3819			YES				YES
70F3820			YES				YES
70F3821			YES				YES
70F3822			YES				YES
70F3823			YES				YES
70F3824			YES				YES
70F3825			YES				YES
70F3826			YES				YES
70F3827			YES				YES
70F3828			YES				YES
70F3829			YES				YES
70F3830			YES				YES
70F3831			YES				YES
70F3832			YES				YES
70F3833			YES				YES
70F3834			YES				YES
70F3835			YES				YES
70F3836			YES				YES
70F3837			YES				YES
70F3913			YES				YES
70F3914			YES				YES
70F3915			YES				YES
70F3916			YES				YES
70F3917			YES				YES
70F3918			YES				YES
70F3919			YES				YES
70F3920			YES				YES
70F3921			YES				YES
70F3922			YES				YES
70F3923			YES				YES
70F3924			YES				YES
70F3925			YES				YES
70F3926			YES				YES
70F3927			YES				YES
70F3931			YES				YES
70F3932			YES				YES
70F3933			YES				YES
70F3934			YES				YES

CPU	ICE	FIRE	ICD DEBUG	ICD MONITOR	ICD TRACE	POWER INTEGRATOR	INSTRUCTION SIMULATOR
70F3935			YES				YES
70F3936			YES				YES
70F3937			YES				YES
70F3938			YES				YES
70F3939			YES				YES
70F4000			YES				YES
70F4001			YES				YES
70F4002			YES				YES
70F4003			YES				YES
70F4004			YES				YES
70F4005			YES				YES
70F4006			YES				YES
70F4007			YES				YES
70F4008			YES				YES
70F4009			YES				YES
70F4010			YES				YES
70F4011			YES				YES
70F4012			YES				YES
80200			YES				YES
80219			YES				YES
80321			YES				YES
80331			YES				YES
80332			YES				YES
80333			YES				YES
81341			YES				YES
81342			YES				YES
81348			YES				YES
88AP128			YES	YES			YES
88AP162			YES	YES			YES
88AP166			YES	YES			YES
88AP168			YES	YES			YES
88E6208			YES	YES			YES
88E6218			YES	YES			YES
88F5082			YES	YES			YES
88F5180N			YES	YES			YES
88F5181			YES	YES			YES
88F5181L			YES	YES			YES
88F5182			YES	YES			YES
88F5281			YES	YES			YES
88F6082			YES	YES			YES
88F6180			YES	YES			YES
88F6183			YES	YES			YES

CPU	ICE	FIRE	ICD DEBUG	ICD MONITOR	ICD TRACE	POWER INTEGRATOR	INSTRUCTION SIMULATOR
88F6183L			YES	YES			YES
88F6190			YES	YES			YES
88F6192			YES	YES			YES
88F6280			YES	YES			YES
88F6281			YES	YES			YES
88F6282			YES	YES			YES
88F6283			YES	YES			YES
88F6321			YES	YES			YES
88F6322			YES	YES			YES
88F6323			YES	YES			YES
88FR101			YES	YES	YES		YES
88FR102			YES	YES	YES		YES
88FR111			YES	YES	YES		YES
88FR131			YES	YES			YES
88FR301			YES	YES	YES		YES
88FR321			YES	YES			YES
88FR331			YES	YES			YES
88FR521			YES	YES			YES
88FR531			YES	YES			YES
88FR571			YES	YES			YES
88I6745			YES	YES			YES
88SV581X-V6			YES	YES			YES
8XC196EA	YES		YES	YES			
A2F060			YES	YES	YES		YES
A2F200			YES	YES	YES		YES
A2F500			YES	YES	YES		YES
AAEC-2000			YES	YES			YES
AD20MSP430			YES	YES			YES
AD6522			YES	YES			YES
AD6526			YES	YES			YES
AD6528			YES	YES			YES
AD6529			YES	YES			YES
AD6532			YES	YES			YES
ADSP-BF531			YES				
ADSP-BF532			YES				
ADSP-BF533			YES				
ADSP-BF534			YES				
ADSP-BF536			YES				
ADSP-BF537			YES				
ADSP-BF538			YES				
ADSP-BF538F			YES				
ADSP-BF542			YES				

CPU	ICE	FIRE	ICD DEBUG	ICD MONITOR	ICD TRACE	POWER INTEGRATOR	INSTRUCTION SIMULATOR
ADSP-BF544			YES				
ADSP-BF547			YES				
ADSP-BF548			YES				
ADSP-BF549			YES				
ADUC7020			YES	YES			YES
ADUC7021			YES	YES			YES
ADUC7022			YES	YES			YES
ADUC7023			YES	YES			YES
ADUC7024			YES	YES			YES
ADUC7025			YES	YES			YES
ADUC7026			YES	YES			YES
ADUC7027			YES	YES			YES
ADUC7028			YES	YES			YES
ADUC7029			YES	YES			YES
ADUC7030			YES	YES			YES
ADUC7032			YES	YES			YES
ADUC7033			YES	YES			YES
ADUC7034			YES	YES			YES
ADUC7036			YES	YES			YES
ADUC7039			YES	YES			YES
ADUC7122			YES	YES			YES
ADUC7124			YES	YES			YES
ADUC7128			YES	YES			YES
ADUC7129			YES	YES			YES
ALUMINIUM			YES				YES
AM1707			YES	YES			YES
AM1808			YES	YES			YES
AM1810			YES	YES			YES
AM3505			YES	YES	YES		YES
AM3517			YES	YES	YES		YES
APM83290			YES		YES		YES
APS3			YES				
APS3B			YES				
APS3BS			YES				
APS3S			YES				
AR7			YES				YES
ARC-A4			YES				
ARC-A5			YES				
ARC601			YES				
ARC605			YES				
ARC610D			YES				
ARC625D			YES				

CPU	ICE	FIRE	ICD DEBUG	ICD MONITOR	ICD TRACE	POWER INTEGRATOR	INSTRUCTION SIMULATOR
ARC630D			YES				
ARC710D			YES				
ARC725D			YES				
ARC750D			YES				
ARM1020E			YES	YES	YES		YES
ARM1022E			YES	YES	YES		YES
ARM1026EJ-S			YES	YES	YES		YES
ARM1136J-S			YES	YES	YES		YES
ARM1136JF-S			YES	YES	YES		YES
ARM1156T2-S			YES	YES	YES		YES
ARM1156T2F-S			YES	YES	YES		YES
ARM1176JZ-S			YES	YES	YES		YES
ARM1176JZF-S			YES	YES	YES		YES
ARM11MPCORE			YES	YES	YES		YES
ARM710T			YES	YES	YES		YES
ARM710T-AMBA		YES	YES	YES	YES		YES
ARM720T			YES	YES	YES		YES
ARM720T-AMBA		YES	YES	YES	YES		YES
ARM740T			YES	YES	YES		YES
ARM740T-AMBA		YES	YES	YES	YES		YES
ARM7DI			YES	YES	YES		YES
ARM7EJ-S			YES	YES	YES		YES
ARM7TDMI	YES	YES	YES	YES	YES		YES
ARM7TDMI-AMBA	YES	YES	YES	YES	YES		YES
ARM7TDMI-S			YES	YES	YES		YES
ARM915T			YES	YES	YES		YES
ARM920T			YES	YES	YES		YES
ARM922T			YES	YES	YES		YES
ARM926EJ-S			YES	YES	YES		YES
ARM940T			YES	YES	YES		YES
ARM946E-S			YES	YES	YES		YES
ARM966E-S			YES	YES	YES		YES
ARM968E-S			YES	YES	YES		YES
ARM9E-S			YES	YES	YES		YES
ARM9EJ-S			YES	YES	YES		YES
ARM9TDMI			YES	YES	YES		YES
AT32UC3A0128			YES				
AT32UC3A0256			YES				
AT32UC3A0512			YES				
AT32UC3A1128			YES				
AT32UC3A1256			YES				
AT32UC3A128			YES				

CPU	ICE	FIRE	ICD DEBUG	ICD MONITOR	ICD TRACE	POWER INTEGRATOR	INSTRUCTION SIMULATOR
AT32UC3A1512			YES				
AT32UC3A3128			YES				
AT32UC3A3128S			YES				
AT32UC3A3256			YES				
AT32UC3A3256S			YES				
AT32UC3A364			YES				
AT32UC3A364S			YES				
AT32UC3A4128S			YES				
AT32UC3A4256			YES				
AT32UC3A4256S			YES				
AT32UC3A464S			YES				
AT32UC3A64			YES				
AT32UC3B0128			YES				
AT32UC3B0256			YES				
AT32UC3B0512			YES				
AT32UC3B064			YES				
AT32UC3B1128			YES				
AT32UC3B1256			YES				
AT32UC3B1512			YES				
AT32UC3B164			YES				
AT32UC3C0128			YES				
AT32UC3C0256			YES				
AT32UC3C0512			YES				
AT32UC3C064			YES				
AT32UC3C1128			YES				
AT32UC3C1256			YES				
AT32UC3C1512			YES				
AT32UC3C164			YES				
AT32UC3C2128			YES				
AT32UC3C2256			YES				
AT32UC3C2512			YES				
AT32UC3C264			YES				
AT32UC3D0128			YES				
AT32UC3D0256			YES				
AT32UC3D032			YES				
AT32UC3D064			YES				
AT32UC3D1128			YES				
AT32UC3D1256			YES				
AT32UC3D132			YES				
AT32UC3D164			YES				
AT32UC3L016			YES				
AT32UC3L032			YES				

CPU	ICE	FIRE	ICD DEBUG	ICD MONITOR	ICD TRACE	POWER INTEGRATOR	INSTRUCTION SIMULATOR
AT32UC3L064			YES				
AT75C220			YES	YES			YES
AT75C310			YES	YES			YES
AT75C320			YES	YES			YES
AT76C501			YES	YES			YES
AT76C502			YES	YES			YES
AT76C502A			YES	YES			YES
AT76C503			YES	YES			YES
AT76C503A			YES	YES			YES
AT76C510			YES	YES			YES
AT76C551			YES	YES			YES
AT76C901			YES	YES			YES
AT78C1501			YES	YES			YES
AT91CAP7E			YES	YES			YES
AT91CAP7S250A			YES	YES			YES
AT91CAP7S450A			YES	YES			YES
AT91CAP9E			YES	YES			YES
AT91CAP9EC			YES	YES			YES
AT91CAP9S250A			YES	YES			YES
AT91CAP9S500A			YES	YES			YES
AT91CAP9SC250A			YES	YES			YES
AT91CAP9SC500A			YES	YES			YES
AT91F40416			YES	YES			YES
AT91F40816			YES	YES			YES
AT91FR40162			YES	YES			YES
AT91FR4042			YES	YES			YES
AT91FR4081			YES	YES			YES
AT91M40100			YES	YES			YES
AT91M40400			YES	YES			YES
AT91M40403			YES	YES			YES
AT91M40800			YES	YES			YES
AT91M40807			YES	YES			YES
AT91M42800A			YES	YES			YES
AT91M43300			YES	YES			YES
AT91M55800A			YES	YES			YES
AT91M63200			YES	YES			YES
AT91R40008			YES	YES			YES
AT91R40807			YES	YES			YES
AT91RM3400			YES	YES			YES
AT91RM9200			YES	YES	YES		YES
AT91SAM3N1A			YES	YES	YES		YES
AT91SAM3N1B			YES	YES	YES		YES

CPU	ICE	FIRE	ICD DEBUG	ICD MONITOR	ICD TRACE	POWER INTEGRATOR	INSTRUCTION SIMULATOR
AT91SAM3N1C			YES	YES	YES		YES
AT91SAM3N2A			YES	YES	YES		YES
AT91SAM3N2B			YES	YES	YES		YES
AT91SAM3N2C			YES	YES	YES		YES
AT91SAM3N4A			YES	YES	YES		YES
AT91SAM3N4B			YES	YES	YES		YES
AT91SAM3N4C			YES	YES	YES		YES
AT91SAM3S1A			YES	YES	YES		YES
AT91SAM3S1B			YES	YES	YES		YES
AT91SAM3S1C			YES	YES	YES		YES
AT91SAM3S2A			YES	YES	YES		YES
AT91SAM3S2B			YES	YES	YES		YES
AT91SAM3S2C			YES	YES	YES		YES
AT91SAM3S4A			YES	YES	YES		YES
AT91SAM3S4B			YES	YES	YES		YES
AT91SAM3S4C			YES	YES	YES		YES
AT91SAM3U1C			YES	YES	YES		YES
AT91SAM3U1E			YES	YES	YES		YES
AT91SAM3U2C			YES	YES	YES		YES
AT91SAM3U2E			YES	YES	YES		YES
AT91SAM3U4C			YES	YES	YES		YES
AT91SAM3U4E			YES	YES	YES		YES
AT91SAM7A1			YES	YES			YES
AT91SAM7A2			YES	YES			YES
AT91SAM7A3			YES	YES			YES
AT91SAM7L128			YES	YES			YES
AT91SAM7L64			YES	YES			YES
AT91SAM7S128			YES	YES			YES
AT91SAM7S256			YES	YES			YES
AT91SAM7S32			YES	YES			YES
AT91SAM7S321			YES	YES			YES
AT91SAM7S512			YES	YES			YES
AT91SAM7S64			YES	YES			YES
AT91SAM7SE256			YES	YES			YES
AT91SAM7SE32			YES	YES			YES
AT91SAM7SE512			YES	YES			YES
AT91SAM7X128			YES	YES			YES
AT91SAM7X256			YES	YES			YES
AT91SAM7X512			YES	YES			YES
AT91SAM7XC128			YES	YES			YES
AT91SAM7XC256			YES	YES			YES
AT91SAM7XC512			YES	YES			YES

CPU	ICE	FIRE	ICD DEBUG	ICD MONITOR	ICD TRACE	POWER INTEGRATOR	INSTRUCTION SIMULATOR
AT91SAM9260			YES	YES			YES
AT91SAM9261			YES	YES	YES		YES
AT91SAM9263			YES	YES	YES		YES
AT91SAM9G10			YES	YES			YES
AT91SAM9G20			YES	YES			YES
AT91SAM9G45			YES	YES			YES
AT91SAM9M10			YES	YES			YES
AT91SAM9R64			YES	YES			YES
AT91SAM9RL64			YES	YES			YES
AT91SAM9XE128			YES	YES			YES
AT91SAM9XE256			YES	YES			YES
AT91SAM9XE512			YES	YES			YES
AT91SC321RC			YES	YES			YES
AU1000			YES				YES
AU1000LP			YES				YES
AU1000N			YES				YES
AU1100			YES				YES
AU1200			YES				YES
AU1500			YES				YES
AU1550			YES				YES
BC6911			YES	YES			YES
BCM			YES	YES			YES
BCM1101			YES				YES
BCM1103			YES				YES
BCM1113			YES				YES
BCM1125			YES				YES
BCM1190			YES				YES
BCM1250			YES				YES
BCM1280 (1255)			YES				YES
BCM1480 (1455)			YES				YES
BCM3349			YES				YES
BCM3380			YES				YES
BCM3549			YES				YES
BCM3556			YES				YES
BCM4704			YES				YES
BCM471X(6/7/8)			YES				YES
BCM4748			YES				YES
BCM5350			YES				YES
BCM5354			YES				YES
BCM5358			YES				YES
BCM5365			YES				YES
BCM56XXX			YES				YES

CPU	ICE	FIRE	ICD DEBUG	ICD MONITOR	ICD TRACE	POWER INTEGRATOR	INSTRUCTION SIMULATOR
BCM5836			YES				YES
BCM6338			YES				YES
BCM6345			YES				YES
BCM6348			YES				YES
BCM6358			YES				YES
BCM6362			YES				YES
BCM6368			YES				YES
BCM6550			YES				YES
BCM7038			YES				YES
BCM7111			YES				YES
BCM7312			YES				YES
BCM7317			YES				YES
BCM7318			YES				YES
BCM7325			YES				YES
BCM7335			YES				YES
BCM7400			YES				YES
BCM7401			YES				YES
BCM7402			YES				YES
BCM7405			YES				YES
BCM7407			YES				YES
BCM7413			YES				YES
BERYLLIUM			YES	YES			YES
BU7611AKU			YES	YES			YES
C161U		YES	YES	YES	YES		YES
C165H		YES	YES	YES	YES		YES
C165UTAH		YES	YES	YES	YES		YES
C166CBC			YES	YES	YES		YES
C7108			YES				YES
CBC32XXA			YES	YES			YES
CDC3207G			YES	YES	YES		YES
CDC3272G			YES	YES	YES		YES
CDC32XXG			YES	YES			YES
CDL-82			YES	YES			YES
CDMAX			YES	YES			YES
CEA32XXA			YES	YES			YES
CEVA-X1620			YES		YES		
CEVA-X1621			YES		YES		
CEVA-X1622			YES		YES		
CEVA-X1641			YES		YES		
CEVA-XS1100			YES		YES		
CEVA-XS1102			YES		YES		
CEVA-XS1141			YES		YES		

CPU	ICE	FIRE	ICD DEBUG	ICD MONITOR	ICD TRACE	POWER INTEGRATOR	INSTRUCTION SIMULATOR
CEVA-XS1200			YES		YES		
CL-PS7110			YES	YES			YES
CL-PS7111			YES	YES			YES
CL-PS7500FE			YES	YES			YES
CL-SH8665			YES	YES			YES
CL-SH8668			YES	YES			YES
CLARITY			YES	YES			YES
CN9414			YES	YES			YES
COACH12			YES				YES
CORTEX-A15			YES	YES	YES		YES
CORTEX-A15MPCORE			YES	YES	YES		YES
CORTEX-A5			YES	YES	YES		YES
CORTEX-A5MPCORE			YES	YES	YES		YES
CORTEX-A8			YES	YES	YES		YES
CORTEX-A9			YES	YES	YES		YES
CORTEX-A9MPCORE			YES	YES	YES		YES
CORTEX-M0			YES	YES			YES
CORTEX-M1			YES	YES			YES
CORTEX-M3			YES	YES	YES		YES
CORTEX-M4			YES	YES	YES		YES
CORTEX-R4			YES	YES	YES		YES
CORTEX-R4F			YES	YES	YES		YES
CS22210			YES	YES			YES
CS22220			YES	YES			YES
CS22230			YES	YES			YES
CS22250			YES	YES			YES
CS22270			YES	YES			YES
CS89712			YES	YES			YES
CSM5000			YES	YES			YES
CSM5200			YES	YES			YES
CX22490			YES	YES			YES
CX22491			YES	YES			YES
CX22492			YES	YES			YES
CX22496			YES	YES			YES
CX81210			YES	YES			YES
CX81400			YES	YES			YES
CX82100			YES	YES			YES
CY8C5245			YES	YES	YES		YES
CY8C5246			YES	YES	YES		YES
CY8C5247			YES	YES	YES		YES
CY8C5248			YES	YES	YES		YES
CY8C5385			YES	YES	YES		YES

CPU	ICE	FIRE	ICD DEBUG	ICD MONITOR	ICD TRACE	POWER INTEGRATOR	INSTRUCTION SIMULATOR
CY8C5386			YES	YES	YES		YES
CY8C5387			YES	YES	YES		YES
CY8C5388			YES	YES	YES		YES
CY8C5485			YES	YES	YES		YES
CY8C5486			YES	YES	YES		YES
CY8C5487			YES	YES	YES		YES
CY8C5488			YES	YES	YES		YES
CY8C5585			YES	YES	YES		YES
CY8C5586			YES	YES	YES		YES
CY8C5587			YES	YES	YES		YES
CY8C5588			YES	YES	YES		YES
D410			YES				YES
D425			YES				YES
D510			YES				YES
D5205			YES	YES			YES
D525			YES				YES
D5313			YES	YES			YES
D5314			YES	YES			YES
DB5500			YES	YES	YES		YES
DB8500			YES	YES	YES		YES
DC_108MINI			YES				
DC_212GP			YES				
DC_232L			YES				
DC_330HIFI			YES				
DC_454CK			YES				
DC_570T			YES				
DIGICOLOR-OA980			YES	YES			YES
DSP56002			YES				
DSP56004			YES				
DSP56005			YES				
DSP56156			YES				
DSP56166			YES				
DSP56301			YES				
DSP56303			YES				
DSP56307			YES				
DSP56309			YES				
DSP56311			YES				
DSP56321			YES				
DSP56362			YES				
DSP56364			YES				
DSP56366			YES				
DSP56367			YES				

CPU	ICE	FIRE	ICD DEBUG	ICD MONITOR	ICD TRACE	POWER INTEGRATOR	INSTRUCTION SIMULATOR
DSP56371			YES				
DSP56374			YES				
DSP56720			YES				
DSP56721			YES				
DSP56824			YES				
DSP56852			YES				
DSP56853			YES				
DSP56854			YES				
DSP56855			YES				
DSP56857			YES				
DSP56858			YES				
DSP56F801			YES				
DSP56F802			YES				
DSP56F803			YES				
DSP56F805			YES				
DSP56F807			YES				
DSP56F8122			YES				
DSP56F8123			YES				
DSP56F8135			YES				
DSP56F8145			YES				
DSP56F8146			YES				
DSP56F8147			YES				
DSP56F8155			YES				
DSP56F8156			YES				
DSP56F8157			YES				
DSP56F8165			YES				
DSP56F8166			YES				
DSP56F8167			YES				
DSP56F826			YES				
DSP56F827			YES				
DSP56F8322			YES				
DSP56F8323			YES				
DSP56F8335			YES				
DSP56F8345			YES				
DSP56F8346			YES				
DSP56F8347			YES				
DSP56F8355			YES				
DSP56F8356			YES				
DSP56F8357			YES				
DSP56F8365			YES				
DSP56F8366			YES				
DSP56F8367			YES				

CPU	ICE	FIRE	ICD DEBUG	ICD MONITOR	ICD TRACE	POWER INTEGRATOR	INSTRUCTION SIMULATOR
E620			YES				YES
E620T			YES				YES
E640			YES				YES
E640T			YES				YES
E660			YES				YES
E660T			YES				YES
E680			YES				YES
E680T			YES				YES
ECONA CNS1101			YES	YES			YES
ECONA CNS1102			YES	YES			YES
ECONA CNS1104			YES	YES			YES
ECONA CNS1105			YES	YES			YES
ECONA CNS1109			YES	YES			YES
ECONA CNS1202			YES	YES			YES
ECONA CNS1205			YES	YES			YES
ECONA CNS2131			YES	YES			YES
ECONA CNS2132			YES	YES			YES
ECONA CNS2133			YES	YES			YES
ECONA CNS2181			YES	YES			YES
ECONA CNS2182X			YES	YES			YES
ECONA CNS3410			YES	YES			YES
ECONA CNS3420			YES	YES			YES
EFM32G200F			YES	YES	YES		YES
EFM32G210F			YES	YES	YES		YES
EFM32G230F			YES	YES	YES		YES
EFM32G280F			YES	YES	YES		YES
EFM32G290F			YES	YES	YES		YES
EFM32G840F			YES	YES	YES		YES
EFM32G880F			YES	YES	YES		YES
EFM32G890F			YES	YES	YES		YES
EM773			YES	YES			YES
EP7209			YES	YES			YES
EP7211			YES	YES			YES
EP7212			YES	YES			YES
EP7309			YES	YES			YES
EP7311			YES	YES			YES
EP7312			YES	YES			YES
EP7339			YES	YES			YES
EP7407			YES	YES			YES
EP9301			YES	YES			YES
EP9307			YES	YES			YES
EP9312			YES	YES			YES

CPU	ICE	FIRE	ICD DEBUG	ICD MONITOR	ICD TRACE	POWER INTEGRATOR	INSTRUCTION SIMULATOR
EP9315			YES	YES			YES
EPXA1			YES	YES	YES		YES
EPXA10			YES	YES	YES		YES
EPXA4			YES	YES	YES		YES
ERTEC200			YES	YES	YES		YES
ERTEC400			YES	YES	YES		YES
FA526			YES	YES			YES
FA606TE			YES	YES			YES
FA626			YES	YES			YES
FA626TE			YES	YES			YES
GMS30C7201			YES	YES			YES
GP4020			YES	YES			YES
H8S/2319			YES	YES			YES
H8S/2329			YES	YES			YES
H8S/2339			YES	YES			YES
H8S/2367			YES	YES			YES
H8S/2368			YES	YES			YES
H8S/2377			YES	YES			YES
H8S/2378			YES	YES			YES
H8SX/1642			YES	YES			YES
H8SX/1644			YES	YES			YES
H8SX/1648			YES	YES			YES
H8SX/1648G			YES	YES			YES
H8SX/1648H			YES	YES			YES
H8SX/1663			YES	YES			YES
H8SX/1664			YES	YES			YES
H8SX/1668			YES	YES			YES
H8SX/1668M			YES	YES			YES
H8SX/1668R			YES	YES			YES
HELIUM 100			YES	YES			YES
HELIUM 200			YES	YES			YES
HELIUM 210			YES	YES			YES
HELIUM 500			YES	YES			YES
HIDTV PRO-QX			YES				YES
HMS30C7202			YES	YES			YES
HMS31C2816			YES	YES			YES
HMS39C70512			YES	YES			YES
HMS39C7092			YES	YES			YES
IKF6833			YES				YES
IKF6834			YES				YES
IKF6836			YES				YES
IKF6850			YES				YES

CPU	ICE	FIRE	ICD DEBUG	ICD MONITOR	ICD TRACE	POWER INTEGRATOR	INSTRUCTION SIMULATOR
IKF6860			YES				YES
IMX281			YES	YES	YES		YES
IMX283			YES	YES	YES		YES
IMX285			YES	YES	YES		YES
IMX286			YES	YES	YES		YES
IMX287			YES	YES	YES		YES
IMX515			YES	YES	YES		YES
IMX535			YES	YES	YES		YES
INCA-IP PSB21553			YES				YES
INCA-P			YES	YES	YES		YES
INFOSTREAM			YES	YES			YES
IOP321			YES				YES
IOP331			YES				YES
IOP332			YES				YES
IOP333			YES				YES
IOP341			YES				YES
IOP342			YES				YES
IOP348			YES				YES
IOP480			YES		YES		YES
IXC1100			YES				YES
IXP220			YES	YES			YES
IXP225			YES	YES			YES
IXP2325			YES				YES
IXP2350			YES				YES
IXP2400			YES				YES
IXP2800			YES				YES
IXP2805			YES				YES
IXP2850			YES				YES
IXP2855			YES				YES
IXP420			YES				YES
IXP421			YES				YES
IXP422			YES				YES
IXP423			YES				YES
IXP425			YES				YES
IXP430			YES				YES
IXP431			YES				YES
IXP432			YES				YES
IXP433			YES				YES
IXP435			YES				YES
IXP455			YES				YES
IXP460			YES				YES
IXP465			YES				YES

CPU	ICE	FIRE	ICD DEBUG	ICD MONITOR	ICD TRACE	POWER INTEGRATOR	INSTRUCTION SIMULATOR
JANUS2			YES		YES		YES
JANUS200			YES		YES		YES
JANUS220			YES		YES		YES
JANUSCC			YES		YES		YES
K10			YES	YES	YES		YES
K20			YES	YES	YES		YES
K30			YES	YES	YES		YES
K40			YES	YES	YES		YES
K60			YES	YES	YES		YES
KIRA100			YES	YES			YES
KS17C40025			YES	YES			YES
KS17F80013			YES	YES			YES
KS32C61100			YES	YES			YES
KS32P6632			YES	YES			YES
L64324			YES	YES			YES
L7200			YES	YES			YES
L7205			YES	YES			YES
L7210			YES	YES			YES
LH75400			YES	YES			YES
LH75401			YES	YES			YES
LH75410			YES	YES			YES
LH75411			YES	YES			YES
LH77790			YES	YES			YES
LH79520			YES	YES			YES
LH7A400			YES	YES			YES
LH7A404			YES	YES			YES
LH7A405			YES	YES			YES
LITHIUM			YES	YES			YES
LM3S101			YES	YES	YES		YES
LM3S102			YES	YES	YES		YES
LM3S1110			YES	YES	YES		YES
LM3S1133			YES	YES	YES		YES
LM3S1138			YES	YES	YES		YES
LM3S1150			YES	YES	YES		YES
LM3S1162			YES	YES	YES		YES
LM3S1165			YES	YES	YES		YES
LM3S1332			YES	YES	YES		YES
LM3S1435			YES	YES	YES		YES
LM3S1439			YES	YES	YES		YES
LM3S1512			YES	YES	YES		YES
LM3S1538			YES	YES	YES		YES
LM3S1601			YES	YES	YES		YES

CPU	ICE	FIRE	ICD DEBUG	ICD MONITOR	ICD TRACE	POWER INTEGRATOR	INSTRUCTION SIMULATOR
LM3S1607			YES	YES	YES		YES
LM3S1608			YES	YES	YES		YES
LM3S1620			YES	YES	YES		YES
LM3S1621			YES	YES	YES		YES
LM3S1625			YES	YES	YES		YES
LM3S1626			YES	YES	YES		YES
LM3S1627			YES	YES	YES		YES
LM3S1635			YES	YES	YES		YES
LM3S1637			YES	YES	YES		YES
LM3S1651			YES	YES	YES		YES
LM3S1751			YES	YES	YES		YES
LM3S1776			YES	YES	YES		YES
LM3S1811			YES	YES	YES		YES
LM3S1816			YES	YES	YES		YES
LM3S1850			YES	YES	YES		YES
LM3S1911			YES	YES	YES		YES
LM3S1918			YES	YES	YES		YES
LM3S1937			YES	YES	YES		YES
LM3S1958			YES	YES	YES		YES
LM3S1960			YES	YES	YES		YES
LM3S1968			YES	YES	YES		YES
LM3S1B21			YES	YES	YES		YES
LM3S1J11			YES	YES	YES		YES
LM3S1J16			YES	YES	YES		YES
LM3S1N11			YES	YES	YES		YES
LM3S1N16			YES	YES	YES		YES
LM3S1P51			YES	YES	YES		YES
LM3S1R21			YES	YES	YES		YES
LM3S1R26			YES	YES	YES		YES
LM3S1W16			YES	YES	YES		YES
LM3S1Z16			YES	YES	YES		YES
LM3S2110			YES	YES	YES		YES
LM3S2139			YES	YES	YES		YES
LM3S2276			YES	YES	YES		YES
LM3S2410			YES	YES	YES		YES
LM3S2412			YES	YES	YES		YES
LM3S2432			YES	YES	YES		YES
LM3S2533			YES	YES	YES		YES
LM3S2601			YES	YES	YES		YES
LM3S2608			YES	YES	YES		YES
LM3S2616			YES	YES	YES		YES
LM3S2620			YES	YES	YES		YES

CPU	ICE	FIRE	ICD DEBUG	ICD MONITOR	ICD TRACE	POWER INTEGRATOR	INSTRUCTION SIMULATOR
LM3S2637			YES	YES	YES		YES
LM3S2651			YES	YES	YES		YES
LM3S2671			YES	YES	YES		YES
LM3S2678			YES	YES	YES		YES
LM3S2730			YES	YES	YES		YES
LM3S2739			YES	YES	YES		YES
LM3S2776			YES	YES	YES		YES
LM3S2793			YES	YES	YES		YES
LM3S2911			YES	YES	YES		YES
LM3S2918			YES	YES	YES		YES
LM3S2939			YES	YES	YES		YES
LM3S2948			YES	YES	YES		YES
LM3S2950			YES	YES	YES		YES
LM3S2965			YES	YES	YES		YES
LM3S2B93			YES	YES	YES		YES
LM3S300			YES	YES	YES		YES
LM3S301			YES	YES	YES		YES
LM3S308			YES	YES	YES		YES
LM3S310			YES	YES	YES		YES
LM3S315			YES	YES	YES		YES
LM3S316			YES	YES	YES		YES
LM3S317			YES	YES	YES		YES
LM3S328			YES	YES	YES		YES
LM3S3634			YES	YES	YES		YES
LM3S3651			YES	YES	YES		YES
LM3S3739			YES	YES	YES		YES
LM3S3748			YES	YES	YES		YES
LM3S3749			YES	YES	YES		YES
LM3S3759			YES	YES	YES		YES
LM3S3768			YES	YES	YES		YES
LM3S3826			YES	YES	YES		YES
LM3S3J26			YES	YES	YES		YES
LM3S3N26			YES	YES	YES		YES
LM3S3W26			YES	YES	YES		YES
LM3S3Z26			YES	YES	YES		YES
LM3S5632			YES	YES	YES		YES
LM3S5651			YES	YES	YES		YES
LM3S5652			YES	YES	YES		YES
LM3S5656			YES	YES	YES		YES
LM3S5662			YES	YES	YES		YES
LM3S5732			YES	YES	YES		YES
LM3S5737			YES	YES	YES		YES

CPU	ICE	FIRE	ICD DEBUG	ICD MONITOR	ICD TRACE	POWER INTEGRATOR	INSTRUCTION SIMULATOR
LM3S5739			YES	YES	YES		YES
LM3S5747			YES	YES	YES		YES
LM3S5749			YES	YES	YES		YES
LM3S5752			YES	YES	YES		YES
LM3S5757			YES	YES	YES		YES
LM3S5762			YES	YES	YES		YES
LM3S5767			YES	YES	YES		YES
LM3S5768			YES	YES	YES		YES
LM3S5769			YES	YES	YES		YES
LM3S5791			YES	YES	YES		YES
LM3S5951			YES	YES	YES		YES
LM3S5956			YES	YES	YES		YES
LM3S5B91			YES	YES	YES		YES
LM3S5C31			YES	YES	YES		YES
LM3S5K31			YES	YES	YES		YES
LM3S5K36			YES	YES	YES		YES
LM3S5P31			YES	YES	YES		YES
LM3S5P36			YES	YES	YES		YES
LM3S5P51			YES	YES	YES		YES
LM3S5P56			YES	YES	YES		YES
LM3S5R31			YES	YES	YES		YES
LM3S5R36			YES	YES	YES		YES
LM3S5T36			YES	YES	YES		YES
LM3S5Y36			YES	YES	YES		YES
LM3S600			YES	YES	YES		YES
LM3S601			YES	YES	YES		YES
LM3S608			YES	YES	YES		YES
LM3S610			YES	YES	YES		YES
LM3S6100			YES	YES	YES		YES
LM3S611			YES	YES	YES		YES
LM3S6110			YES	YES	YES		YES
LM3S612			YES	YES	YES		YES
LM3S613			YES	YES	YES		YES
LM3S615			YES	YES	YES		YES
LM3S617			YES	YES	YES		YES
LM3S618			YES	YES	YES		YES
LM3S628			YES	YES	YES		YES
LM3S6420			YES	YES	YES		YES
LM3S6422			YES	YES	YES		YES
LM3S6432			YES	YES	YES		YES
LM3S6537			YES	YES	YES		YES
LM3S6610			YES	YES	YES		YES

CPU	ICE	FIRE	ICD DEBUG	ICD MONITOR	ICD TRACE	POWER INTEGRATOR	INSTRUCTION SIMULATOR
LM3S6611			YES	YES	YES		YES
LM3S6618			YES	YES	YES		YES
LM3S6633			YES	YES	YES		YES
LM3S6637			YES	YES	YES		YES
LM3S6730			YES	YES	YES		YES
LM3S6753			YES	YES	YES		YES
LM3S6911			YES	YES	YES		YES
LM3S6918			YES	YES	YES		YES
LM3S6938			YES	YES	YES		YES
LM3S6950			YES	YES	YES		YES
LM3S6952			YES	YES	YES		YES
LM3S6965			YES	YES	YES		YES
LM3S800			YES	YES	YES		YES
LM3S801			YES	YES	YES		YES
LM3S808			YES	YES	YES		YES
LM3S811			YES	YES	YES		YES
LM3S812			YES	YES	YES		YES
LM3S815			YES	YES	YES		YES
LM3S817			YES	YES	YES		YES
LM3S818			YES	YES	YES		YES
LM3S828			YES	YES	YES		YES
LM3S8530			YES	YES	YES		YES
LM3S8538			YES	YES	YES		YES
LM3S8630			YES	YES	YES		YES
LM3S8730			YES	YES	YES		YES
LM3S8733			YES	YES	YES		YES
LM3S8738			YES	YES	YES		YES
LM3S8930			YES	YES	YES		YES
LM3S8933			YES	YES	YES		YES
LM3S8938			YES	YES	YES		YES
LM3S8962			YES	YES	YES		YES
LM3S8970			YES	YES	YES		YES
LM3S8971			YES	YES	YES		YES
LM3S9781			YES	YES	YES		YES
LM3S9790			YES	YES	YES		YES
LM3S9792			YES	YES	YES		YES
LM3S9997			YES	YES	YES		YES
LM3S9B81			YES	YES	YES		YES
LM3S9B90			YES	YES	YES		YES
LM3S9B92			YES	YES	YES		YES
LM3S9B95			YES	YES	YES		YES
LM3S9B96			YES	YES	YES		YES

CPU	ICE	FIRE	ICD DEBUG	ICD MONITOR	ICD TRACE	POWER INTEGRATOR	INSTRUCTION SIMULATOR
LM3S9L97			YES	YES	YES		YES
LOGIC CBP3.0			YES	YES			YES
LOGIC CBP4.0			YES	YES			YES
LOGIC L64324			YES	YES			YES
LPC1102			YES	YES			YES
LPC1111			YES	YES			YES
LPC1112			YES	YES			YES
LPC1113			YES	YES			YES
LPC1114			YES	YES			YES
LPC11C12			YES	YES			YES
LPC11C14			YES	YES			YES
LPC1311			YES	YES	YES		YES
LPC1313			YES	YES	YES		YES
LPC1342			YES	YES	YES		YES
LPC1343			YES	YES	YES		YES
LPC1751			YES	YES	YES		YES
LPC1752			YES	YES	YES		YES
LPC1754			YES	YES	YES		YES
LPC1756			YES	YES	YES		YES
LPC1758			YES	YES	YES		YES
LPC1759			YES	YES	YES		YES
LPC1763			YES	YES	YES		YES
LPC1764			YES	YES	YES		YES
LPC1765			YES	YES	YES		YES
LPC1766			YES	YES	YES		YES
LPC1767			YES	YES	YES		YES
LPC1768			YES	YES	YES		YES
LPC1769			YES	YES	YES		YES
LPC2101			YES	YES	YES		YES
LPC2102			YES	YES	YES		YES
LPC2103			YES	YES	YES		YES
LPC2104			YES	YES	YES		YES
LPC2105			YES	YES	YES		YES
LPC2106			YES	YES	YES		YES
LPC2109			YES	YES	YES		YES
LPC2112			YES	YES	YES		YES
LPC2114			YES	YES	YES		YES
LPC2119			YES	YES	YES		YES
LPC2124			YES	YES	YES		YES
LPC2129			YES	YES	YES		YES
LPC2131			YES	YES	YES		YES
LPC2131/01			YES	YES	YES		YES

CPU	ICE	FIRE	ICD DEBUG	ICD MONITOR	ICD TRACE	POWER INTEGRATOR	INSTRUCTION SIMULATOR
LPC2132			YES	YES	YES		YES
LPC2132/01			YES	YES	YES		YES
LPC2134			YES	YES	YES		YES
LPC2134/01			YES	YES	YES		YES
LPC2136			YES	YES	YES		YES
LPC2136/01			YES	YES	YES		YES
LPC2138			YES	YES	YES		YES
LPC2138/01			YES	YES	YES		YES
LPC2141			YES	YES	YES		YES
LPC2142			YES	YES	YES		YES
LPC2144			YES	YES	YES		YES
LPC2146			YES	YES	YES		YES
LPC2148			YES	YES	YES		YES
LPC2194			YES	YES	YES		YES
LPC2210			YES	YES	YES		YES
LPC2212			YES	YES	YES		YES
LPC2214			YES	YES	YES		YES
LPC2220			YES	YES	YES		YES
LPC2290			YES	YES	YES		YES
LPC2292			YES	YES	YES		YES
LPC2294			YES	YES	YES		YES
LPC2364			YES	YES	YES		YES
LPC2365			YES	YES	YES		YES
LPC2366			YES	YES	YES		YES
LPC2367			YES	YES	YES		YES
LPC2368			YES	YES	YES		YES
LPC2377			YES	YES	YES		YES
LPC2378			YES	YES	YES		YES
LPC2387			YES	YES	YES		YES
LPC2388			YES	YES	YES		YES
LPC2458			YES	YES	YES		YES
LPC2460			YES	YES	YES		YES
LPC2468			YES	YES	YES		YES
LPC2470			YES	YES	YES		YES
LPC2478			YES	YES	YES		YES
LPC2880			YES	YES	YES		YES
LPC2888			YES	YES	YES		YES
LPC2915			YES	YES	YES		YES
LPC2917			YES	YES			YES
LPC2917/01			YES	YES	YES		YES
LPC2919			YES	YES			YES
LPC2919/01			YES	YES	YES		YES

CPU	ICE	FIRE	ICD DEBUG	ICD MONITOR	ICD TRACE	POWER INTEGRATOR	INSTRUCTION SIMULATOR
LPC2921			YES	YES	YES		YES
LPC2923			YES	YES	YES		YES
LPC2925			YES	YES	YES		YES
LPC2926			YES	YES	YES		YES
LPC2930			YES	YES	YES		YES
LPC2939			YES	YES	YES		YES
LPC3000			YES	YES			YES
LPC3130			YES	YES			YES
LPC3131			YES	YES			YES
LPC3141			YES	YES			YES
LPC3143			YES	YES			YES
LPC3152			YES	YES			YES
LPC3154			YES	YES			YES
LPC3180			YES	YES			YES
LPC3220			YES	YES			YES
LPC3230			YES	YES			YES
LPC3240			YES	YES			YES
LPC3250			YES	YES			YES
LSI402ZX			YES				
LSI403LP			YES				
LSI403Z			YES				
LX4189			YES		YES		YES
LX4X80			YES		YES		YES
LX5180			YES		YES		YES
LX5280(RTL8650)			YES		YES		YES
M1A3P1000			YES	YES	YES		YES
M1A3P1000L			YES	YES	YES		YES
M1A3P250			YES	YES	YES		YES
M1A3P400			YES	YES	YES		YES
M1A3P600			YES	YES	YES		YES
M1A3P600L			YES	YES	YES		YES
M1A3PE3000L			YES	YES	YES		YES
M1AFS1500			YES	YES	YES		YES
M1AFS250			YES	YES	YES		YES
M1AFS600			YES	YES	YES		YES
M1AGL1000			YES	YES	YES		YES
M1AGL250			YES	YES	YES		YES
M1AGL400			YES	YES	YES		YES
M1AGL600			YES	YES	YES		YES
M1AGLE3000			YES	YES	YES		YES
M310			YES				
M32176			YES		YES		

CPU	ICE	FIRE	ICD DEBUG	ICD MONITOR	ICD TRACE	POWER INTEGRATOR	INSTRUCTION SIMULATOR
M32180			YES		YES		
M32192			YES		YES		
M340			YES				
M4641			YES	YES			YES
M8051EW			YES				
MAC7101			YES	YES			YES
MAC7111			YES	YES			YES
MAC7116			YES	YES			YES
MAC7121			YES	YES			YES
MAC7131			YES	YES			YES
MAC7141			YES	YES			YES
MB86H60			YES	YES			YES
MB9AF102N			YES	YES	YES		YES
MB9AF102R			YES	YES	YES		YES
MB9AF104N			YES	YES	YES		YES
MB9AF104R			YES	YES	YES		YES
MB9BF104N			YES	YES	YES		YES
MB9BF104R			YES	YES	YES		YES
MB9BF105N			YES	YES	YES		YES
MB9BF105R			YES	YES	YES		YES
MB9BF106N			YES	YES	YES		YES
MB9BF106R			YES	YES	YES		YES
MB9BF304N			YES	YES	YES		YES
MB9BF304R			YES	YES	YES		YES
MB9BF305N			YES	YES	YES		YES
MB9BF305R			YES	YES	YES		YES
MB9BF306N			YES	YES	YES		YES
MB9BF306R			YES	YES	YES		YES
MB9BF404N			YES	YES	YES		YES
MB9BF404R			YES	YES	YES		YES
MB9BF405N			YES	YES	YES		YES
MB9BF405R			YES	YES	YES		YES
MB9BF406N			YES	YES	YES		YES
MB9BF406R			YES	YES	YES		YES
MB9BF504N			YES	YES	YES		YES
MB9BF504R			YES	YES	YES		YES
MB9BF505N			YES	YES	YES		YES
MB9BF505R			YES	YES	YES		YES
MB9BF506N			YES	YES	YES		YES
MB9BF506R			YES	YES	YES		YES
MC68330	YES		YES	YES			YES
MC68331	YES		YES	YES			YES

CPU	ICE	FIRE	ICD DEBUG	ICD MONITOR	ICD TRACE	POWER INTEGRATOR	INSTRUCTION SIMULATOR
MC68332	YES		YES	YES			YES
MC68334	YES		YES	YES			YES
MC68336	YES		YES	YES			YES
MC68338	YES		YES	YES			YES
MC68340	YES		YES	YES			YES
MC68341	YES		YES	YES			YES
MC68349	YES		YES	YES			YES
MC68356	YES		YES	YES			YES
MC68360	YES		YES	YES			YES
MC68376	YES		YES	YES			YES
MC68EN360	YES		YES	YES			YES
MC68F333	YES		YES	YES			YES
MC68HC16X1	YES		YES				YES
MC68HC16Y1	YES		YES				YES
MC68HC16Z	YES		YES				YES
MC68HC812A4	YES		YES				YES
MC68HC912B32	YES		YES				YES
MC68HC912BC32	YES		YES				YES
MC68HC912D60	YES	YES	YES				YES
MC68HC912DA128	YES		YES				YES
MC68HC912DG128	YES	YES	YES				YES
MC68HC912DT128	YES	YES	YES				YES
MC68HC916Y1	YES		YES				YES
MC68MH360	YES		YES	YES			YES
MC9328MX1			YES	YES	YES		YES
MC9328MX21			YES	YES			YES
MC9328MX21S			YES	YES			YES
MC9328MXL			YES	YES	YES		YES
MC9328MXS			YES	YES	YES		YES
MC9S08AC16			YES				YES
MC9S08AC8			YES				YES
MC9S08AW16			YES				YES
MC9S08AW32			YES				YES
MC9S08AW48			YES				YES
MC9S08AW60			YES				YES
MC9S08AW8			YES				YES
MC9S08DE32			YES				YES
MC9S08DE60			YES				YES
MC9S08DN16			YES				YES
MC9S08DN32			YES				YES
MC9S08DN48			YES				YES
MC9S08DN60			YES				YES

CPU	ICE	FIRE	ICD DEBUG	ICD MONITOR	ICD TRACE	POWER INTEGRATOR	INSTRUCTION SIMULATOR
MC9S08DV128			YES				YES
MC9S08DV16			YES				YES
MC9S08DV32			YES				YES
MC9S08DV48			YES				YES
MC9S08DV60			YES				YES
MC9S08DV96			YES				YES
MC9S08DZ128			YES				YES
MC9S08DZ16			YES				YES
MC9S08DZ32			YES				YES
MC9S08DZ48			YES				YES
MC9S08DZ60			YES				YES
MC9S08DZ96			YES				YES
MC9S08EL16			YES				YES
MC9S08EL32			YES				YES
MC9S08EN16			YES				YES
MC9S08EN32			YES				YES
MC9S08GB32			YES				YES
MC9S08GB60			YES				YES
MC9S08GT32			YES				YES
MC9S08GT60			YES				YES
MC9S08JM32			YES				YES
MC9S08JM60			YES				YES
MC9S08LC32			YES				YES
MC9S08LC60			YES				YES
MC9S08QA4			YES				YES
MC9S08QD2			YES				YES
MC9S08QD4			YES				YES
MC9S08QE128			YES				YES
MC9S08QE4			YES				YES
MC9S08QE64			YES				YES
MC9S08QE8			YES				YES
MC9S08QE96			YES				YES
MC9S08QG4			YES				YES
MC9S08QG8			YES				YES
MC9S08RC16			YES				YES
MC9S08RC32			YES				YES
MC9S08RC60			YES				YES
MC9S08RC8			YES				YES
MC9S08RD16			YES				YES
MC9S08RD32			YES				YES
MC9S08RD60			YES				YES
MC9S08RD8			YES				YES

CPU	ICE	FIRE	ICD DEBUG	ICD MONITOR	ICD TRACE	POWER INTEGRATOR	INSTRUCTION SIMULATOR
MC9S08RE16			YES				YES
MC9S08RE32			YES				YES
MC9S08RE60			YES				YES
MC9S08RE8			YES				YES
MC9S08RG32			YES				YES
MC9S08RG60			YES				YES
MC9S08SG16			YES				YES
MC9S08SG32			YES				YES
MC9S08SG4			YES				YES
MC9S08SG8			YES				YES
MC9S08SH4			YES				YES
MC9S08SH8			YES				YES
MC9S08SL16			YES				YES
MC9S08SL8			YES				YES
MC9S12A128		YES	YES				YES
MC9S12A256		YES	YES				YES
MC9S12A64		YES	YES				YES
MC9S12B128		YES	YES				YES
MC9S12B256		YES	YES				YES
MC9S12B64		YES	YES				YES
MC9S12C128		YES	YES				YES
MC9S12C32		YES	YES				YES
MC9S12C64		YES	YES				YES
MC9S12C96		YES	YES				YES
MC9S12D64		YES	YES				YES
MC9S12DB128		YES	YES				YES
MC9S12DG128		YES	YES				YES
MC9S12DG256		YES	YES				YES
MC9S12DJ128		YES	YES				YES
MC9S12DJ256		YES	YES				YES
MC9S12DJ64		YES	YES				YES
MC9S12DP256		YES	YES				YES
MC9S12DP512		YES	YES				YES
MC9S12DT128		YES	YES				YES
MC9S12DT256		YES	YES				YES
MC9S12GC128		YES	YES				YES
MC9S12GC16		YES	YES				YES
MC9S12GC32		YES	YES				YES
MC9S12GC64		YES	YES				YES
MC9S12GC96		YES	YES				YES
MC9S12H256			YES				YES
MC9S12HA32			YES				YES

CPU	ICE	FIRE	ICD DEBUG	ICD MONITOR	ICD TRACE	POWER INTEGRATOR	INSTRUCTION SIMULATOR
MC9S12HA48			YES				YES
MC9S12HA64			YES				YES
MC9S12HY32			YES				YES
MC9S12HY48			YES				YES
MC9S12HY64			YES				YES
MC9S12HZ128			YES				YES
MC9S12HZ256			YES				YES
MC9S12KG128		YES	YES				YES
MC9S12KG256		YES	YES				YES
MC9S12KG32		YES	YES				YES
MC9S12KG64		YES	YES				YES
MC9S12KT256		YES	YES				YES
MC9S12P128			YES				YES
MC9S12P32			YES				YES
MC9S12P64			YES				YES
MC9S12P96			YES				YES
MC9S12XB128		YES	YES				YES
MC9S12XB256		YES	YES				YES
MC9S12XD128		YES	YES				YES
MC9S12XD256		YES	YES				YES
MC9S12XD64		YES	YES				YES
MC9S12XDG128		YES	YES				YES
MC9S12XDP512		YES	YES				YES
MC9S12XDQ256		YES	YES				YES
MC9S12XDT256		YES	YES				YES
MC9S12XDT384		YES	YES				YES
MC9S12XDT512		YES	YES				YES
MC9S12XEG128		YES	YES				YES
MC9S12XEP100		YES	YES				YES
MC9S12XEP768		YES	YES				YES
MC9S12XEQ384		YES	YES				YES
MC9S12XEQ512		YES	YES				YES
MC9S12XET256		YES	YES				YES
MC9S12XF128		YES	YES				YES
MC9S12XF256		YES	YES				YES
MC9S12XF384		YES	YES				YES
MC9S12XF512		YES	YES				YES
MC9S12XFE128		YES	YES				YES
MC9S12XFR128		YES	YES				YES
MC9S12XS128		YES	YES				YES
MC9S12XS256		YES	YES				YES
MC9S12XS64		YES	YES				YES

CPU	ICE	FIRE	ICD DEBUG	ICD MONITOR	ICD TRACE	POWER INTEGRATOR	INSTRUCTION SIMULATOR
MCF5202			YES		YES		YES
MCF5203			YES		YES		YES
MCF5204			YES		YES		YES
MCF5206			YES		YES		YES
MCF5206E			YES		YES		YES
MCF5207			YES		YES		YES
MCF5208			YES		YES		YES
MCF52100			YES		YES		YES
MCF5211			YES		YES		YES
MCF52110			YES		YES		YES
MCF5212			YES		YES		YES
MCF5213			YES		YES		YES
MCF5214			YES		YES		YES
MCF5216			YES		YES		YES
MCF52210			YES		YES		YES
MCF52211			YES		YES		YES
MCF52212			YES		YES		YES
MCF52213			YES		YES		YES
MCF52221			YES		YES		YES
MCF52223			YES		YES		YES
MCF52230			YES		YES		YES
MCF52231			YES		YES		YES
MCF52232			YES		YES		YES
MCF52233			YES		YES		YES
MCF52234			YES		YES		YES
MCF52235			YES		YES		YES
MCF52236			YES		YES		YES
MCF52252			YES		YES		YES
MCF52254			YES		YES		YES
MCF52255			YES		YES		YES
MCF52256			YES		YES		YES
MCF52258			YES		YES		YES
MCF52259			YES		YES		YES
MCF52274			YES		YES		YES
MCF52277			YES		YES		YES
MCF5232			YES		YES		YES
MCF5233			YES		YES		YES
MCF5234			YES		YES		YES
MCF5235			YES		YES		YES
MCF5249			YES		YES		YES
MCF5249L			YES		YES		YES
MCF5270			YES		YES		YES

CPU	ICE	FIRE	ICD DEBUG	ICD MONITOR	ICD TRACE	POWER INTEGRATOR	INSTRUCTION SIMULATOR
MCF5271			YES		YES		YES
MCF5272			YES		YES		YES
MCF5274			YES		YES		YES
MCF5274L			YES		YES		YES
MCF5275			YES		YES		YES
MCF5275L			YES		YES		YES
MCF5280			YES		YES		YES
MCF5281			YES		YES		YES
MCF5282			YES		YES		YES
MCF5307			YES		YES		YES
MCF5307A			YES		YES		YES
MCF5307B			YES		YES		YES
MCF5327			YES		YES		YES
MCF5328			YES		YES		YES
MCF5329			YES		YES		YES
MCF5372			YES		YES		YES
MCF5372L			YES		YES		YES
MCF5373			YES		YES		YES
MCF5373L			YES		YES		YES
MCF5407			YES		YES		YES
MCF54450			YES		YES		YES
MCF54451			YES		YES		YES
MCF54452			YES		YES		YES
MCF54453			YES		YES		YES
MCF54454			YES		YES		YES
MCF54455			YES		YES		YES
MCF5470			YES		YES		YES
MCF5471			YES		YES		YES
MCF5472			YES		YES		YES
MCF5473			YES		YES		YES
MCF5474			YES		YES		YES
MCF5475			YES		YES		YES
MCF5480			YES		YES		YES
MCF5481			YES		YES		YES
MCF5482			YES		YES		YES
MCF5483			YES		YES		YES
MCF5484			YES		YES		YES
MCF5485			YES		YES		YES
MCIMX23			YES	YES	YES		YES
MCIMX25			YES	YES	YES		YES
MCIMX27			YES	YES	YES		YES
MCIMX31			YES	YES	YES		YES

CPU	ICE	FIRE	ICD DEBUG	ICD MONITOR	ICD TRACE	POWER INTEGRATOR	INSTRUCTION SIMULATOR
MCIMX35			YES	YES	YES		YES
MCIMX351			YES	YES	YES		YES
MCIMX353			YES	YES	YES		YES
MCIMX355			YES	YES	YES		YES
MCIMX356			YES	YES	YES		YES
MCIMX357			YES	YES	YES		YES
MCIMX37			YES	YES	YES		YES
MCS12KC128		YES	YES				YES
MCS12KC64		YES	YES				YES
MCS12KL128		YES	YES				YES
MCS12KL64		YES	YES				YES
MDEB			YES		YES		YES
MDED			YES		YES		YES
MGT5100			YES				YES
MGT560			YES		YES		YES
MICROBLAZE			YES		YES		YES
MIPS32 1004K			YES		YES		YES
MIPS32 24KC			YES				YES
MIPS32 24KE			YES				YES
MIPS32 24KF			YES				YES
MIPS32 34K			YES		YES		YES
MIPS32 4KC			YES				YES
MIPS32 4KEC			YES		YES		YES
MIPS32 4KM			YES				YES
MIPS32 4KP			YES				YES
MIPS32 4KSD			YES				YES
MIPS32 74K			YES				YES
MIPS64 20KC			YES				YES
MIPS64 5KC			YES				YES
MIPS64 5KF			YES				YES
MKY-82A			YES	YES			YES
MKY-85			YES	YES			YES
ML670100			YES	YES			YES
ML671000			YES	YES			YES
ML674000			YES	YES			YES
ML674001			YES	YES			YES
ML674080			YES	YES			YES
ML675001			YES	YES			YES
ML675200			YES	YES			YES
ML675300			YES	YES			YES
ML67Q2003			YES	YES			YES
ML67Q2300			YES	YES			YES

CPU	ICE	FIRE	ICD DEBUG	ICD MONITOR	ICD TRACE	POWER INTEGRATOR	INSTRUCTION SIMULATOR
ML67Q2301			YES	YES			YES
ML67Q4002			YES	YES			YES
ML67Q4003			YES	YES			YES
ML67Q4100			YES	YES			YES
ML67Q5002			YES	YES			YES
ML67Q5003			YES	YES			YES
ML67Q5200			YES	YES			YES
ML67Q5300			YES	YES			YES
ML70511LA			YES	YES			YES
ML7051LA			YES	YES			YES
MMC2001			YES				
MMC2107			YES				
MMC2112			YES				
MMC2113			YES				
MMC2114			YES				
MN1A7T0200			YES	YES			YES
MODEM			YES	YES			YES
MPC5121			YES				YES
MPC5123			YES				YES
MPC5125			YES				YES
MPC5200			YES			YES	YES
MPC5200B			YES			YES	YES
MPC533			YES		YES		YES
MPC534			YES		YES		YES
MPC535			YES		YES		YES
MPC536			YES		YES		YES
MPC5514			YES				YES
MPC5515			YES				YES
MPC5516			YES				YES
MPC5517			YES				YES
MPC5533			YES				YES
MPC5534			YES				YES
MPC555			YES		YES		YES
MPC5553			YES				YES
MPC5554			YES				YES
MPC556			YES		YES		YES
MPC5561			YES				YES
MPC5565			YES				YES
MPC5566			YES				YES
MPC5567			YES				YES
MPC560XB			YES				YES
MPC560XC			YES				YES

CPU	ICE	FIRE	ICD DEBUG	ICD MONITOR	ICD TRACE	POWER INTEGRATOR	INSTRUCTION SIMULATOR
MPC560XD			YES				YES
MPC560XP			YES				YES
MPC560XS			YES				YES
MPC561			YES		YES		YES
MPC562			YES		YES		YES
MPC563			YES		YES		YES
MPC563XM			YES				YES
MPC564			YES		YES		YES
MPC5645S			YES				YES
MPC564XA			YES				YES
MPC564XB			YES				YES
MPC564XC			YES				YES
MPC564XL			YES				YES
MPC565			YES		YES		YES
MPC566			YES		YES		YES
MPC5668G			YES				YES
MPC567XF			YES				YES
MPC567XK			YES				YES
MPC567XL			YES				YES
MPC603E3			YES				YES
MPC603EV2			YES				YES
MPC740			YES				YES
MPC7400			YES				YES
MPC7410			YES				YES
MPC7441			YES				YES
MPC7445			YES				YES
MPC7447			YES				YES
MPC7447A			YES				YES
MPC7448			YES				YES
MPC745			YES				YES
MPC7450			YES				YES
MPC7451			YES				YES
MPC7455			YES				YES
MPC7457			YES				YES
MPC750			YES				YES
MPC755			YES				YES
MPC821		YES	YES		YES		YES
MPC823		YES	YES		YES		YES
MPC8240			YES				YES
MPC8241			YES				YES
MPC8245			YES				YES
MPC8247			YES				YES

CPU	ICE	FIRE	ICD DEBUG	ICD MONITOR	ICD TRACE	POWER INTEGRATOR	INSTRUCTION SIMULATOR
MPC8248			YES				YES
MPC8250			YES				YES
MPC8255			YES				YES
MPC8255A			YES				YES
MPC8260			YES				YES
MPC8260A			YES				YES
MPC8264			YES				YES
MPC8264A			YES				YES
MPC8265			YES				YES
MPC8265A			YES				YES
MPC8266			YES				YES
MPC8266A			YES				YES
MPC8270			YES				YES
MPC8271			YES				YES
MPC8272			YES				YES
MPC8275			YES				YES
MPC8280			YES				YES
MPC8306			YES				YES
MPC8308			YES				YES
MPC8309			YES				YES
MPC8311			YES				YES
MPC8313			YES				YES
MPC8314			YES				YES
MPC8315			YES				YES
MPC8321			YES				YES
MPC8323			YES				YES
MPC8343			YES				YES
MPC8347			YES				YES
MPC8349			YES				YES
MPC8358			YES				YES
MPC8360			YES				YES
MPC8377			YES				YES
MPC8378			YES				YES
MPC8379			YES				YES
MPC850		YES	YES		YES		YES
MPC852T			YES		YES		YES
MPC8533E			YES				YES
MPC8536E			YES				YES
MPC8540			YES				YES
MPC8541E			YES				YES
MPC8543E			YES				YES
MPC8544E			YES				YES

CPU	ICE	FIRE	ICD DEBUG	ICD MONITOR	ICD TRACE	POWER INTEGRATOR	INSTRUCTION SIMULATOR
MPC8545E			YES				YES
MPC8547E			YES				YES
MPC8548E			YES				YES
MPC855		YES	YES		YES		YES
MPC8555E			YES				YES
MPC8560			YES				YES
MPC8567E			YES				YES
MPC8568E			YES				YES
MPC8569E			YES				YES
MPC8572E			YES				YES
MPC859DSL			YES		YES		YES
MPC859T			YES		YES		YES
MPC860		YES	YES		YES		YES
MPC8610			YES				YES
MPC862		YES	YES		YES		YES
MPC8640			YES				YES
MPC8640D			YES				YES
MPC8641			YES				YES
MPC8641D			YES				YES
MPC866P			YES		YES		YES
MPC866T			YES		YES		YES
MPC870			YES		YES		YES
MPC875			YES		YES		YES
MPC880			YES		YES		YES
MPC885			YES		YES		YES
MSC7110			YES				
MSC7112			YES				
MSC7113			YES				
MSC7115			YES				
MSC7116			YES				
MSC8101			YES				
MSC8102			YES				
MSC8103			YES				
MSC8122			YES				
MSC8126			YES				
MSC8144			YES				
MSC8154			YES				
MSC8154E			YES				
MSC8156			YES				
MSC8156E			YES				
MSM3000			YES	YES			YES
MSM3100			YES	YES			YES

CPU	ICE	FIRE	ICD DEBUG	ICD MONITOR	ICD TRACE	POWER INTEGRATOR	INSTRUCTION SIMULATOR
MSM3300			YES	YES			YES
MSM5000			YES	YES			YES
MSM5100			YES	YES			YES
MSM5105			YES	YES			YES
MSM5200			YES	YES			YES
MSM5500			YES	YES			YES
MSM6000			YES	YES			YES
MSM6050			YES	YES			YES
MSM6100 3G			YES	YES	YES		YES
MSM6200			YES	YES			YES
MSM6250			YES	YES	YES		YES
MSM6300			YES	YES	YES		YES
MSM6500			YES	YES	YES		YES
MSM6600			YES	YES			YES
MSM7XXX			YES	YES			YES
MSP1000			YES	YES			YES
MSP20XX(15/20)			YES		YES		YES
MSP71XX(20/40)			YES		YES		YES
MSP8510			YES				YES
MT1020A			YES	YES			YES
MT92101			YES	YES			YES
MTC-20276			YES	YES			YES
MTC-20277			YES	YES			YES
MTC-30585			YES	YES			YES
MTK-20141			YES	YES			YES
MTK-20280			YES	YES			YES
MTK-20285			YES	YES			YES
MV76100			YES	YES			YES
MV78100			YES	YES			YES
MV78200			YES	YES			YES
MXC91231			YES	YES	YES		YES
MXC91321			YES	YES	YES		YES
MXC91323			YES	YES	YES		YES
MXC91331			YES	YES	YES		YES
N10			YES				
N12			YES				
N270			YES				YES
N280			YES				YES
N450			YES				YES
N455			YES				YES
N470			YES				YES
N475			YES				YES

CPU	ICE	FIRE	ICD DEBUG	ICD MONITOR	ICD TRACE	POWER INTEGRATOR	INSTRUCTION SIMULATOR
N9			YES				
NB85E			YES				YES
NB85ET			YES				YES
NET+15			YES	YES			YES
NET+20			YES	YES			YES
NET+40			YES	YES			YES
NET+50			YES	YES			YES
NETX100			YES	YES	YES		YES
NETX50			YES	YES	YES		YES
NETX500			YES	YES	YES		YES
NEXPERIA			YES	YES			YES
NIOS-II			YES		YES		YES
NITROGEN			YES	YES			YES
NPE405H			YES		YES		YES
NPE405L			YES		YES		YES
NS7520			YES	YES			YES
NS9210			YES	YES			YES
NS9215			YES	YES			YES
NS9360			YES	YES			YES
NS9750			YES	YES			YES
NS9775			YES	YES			YES
OCTEON_CN30XX			YES				YES
OCTEON_CN31XX			YES				YES
OCTEON_CN38XX			YES				YES
OCTEON_CN50XX			YES				YES
OCTEON_CN52XX			YES				YES
OCTEON_CN54XX			YES				YES
OCTEON_CN55XX			YES				YES
OCTEON_CN56XX			YES				YES
OCTEON_CN57XX			YES				YES
OCTEON_CN58XX			YES				YES
OCTEON_II_CN63XX			YES				YES
OMAP-L137			YES	YES			YES
OMAP-L138			YES	YES			YES
OMAP1510			YES	YES	YES		YES
OMAP1610			YES	YES	YES		YES
OMAP1611			YES	YES	YES		YES
OMAP1612			YES	YES	YES		YES
OMAP1710			YES	YES	YES		YES
OMAP2420			YES	YES	YES		YES
OMAP2430			YES	YES	YES		YES
OMAP2431			YES	YES	YES		YES

CPU	ICE	FIRE	ICD DEBUG	ICD MONITOR	ICD TRACE	POWER INTEGRATOR	INSTRUCTION SIMULATOR
OMAP310			YES	YES	YES		YES
OMAP331			YES	YES	YES		YES
OMAP3410			YES	YES	YES		YES
OMAP3420			YES	YES	YES		YES
OMAP3430			YES	YES	YES		YES
OMAP3440			YES	YES	YES		YES
OMAP3503			YES	YES	YES		YES
OMAP3515			YES	YES	YES		YES
OMAP3525			YES	YES	YES		YES
OMAP3530			YES	YES	YES		YES
OMAP3610			YES	YES	YES		YES
OMAP3620			YES	YES	YES		YES
OMAP3630			YES	YES	YES		YES
OMAP3640			YES	YES	YES		YES
OMAP4430			YES	YES	YES		YES
OMAP4440			YES	YES	YES		YES
OMAP5910			YES	YES	YES		YES
OMAP5912			YES	YES	YES		YES
OMAP710			YES	YES	YES		YES
OMAP730			YES	YES	YES		YES
OMAP732			YES	YES	YES		YES
OMAP733			YES	YES	YES		YES
OMAP750			YES	YES	YES		YES
OMAP850			YES	YES	YES		YES
OMAPV1030			YES	YES	YES		YES
OMAPV1035			YES	YES	YES		YES
OMAPV2230			YES	YES	YES		YES
P1011			YES				YES
P1012			YES				YES
P1013			YES				YES
P1020			YES				YES
P1021			YES				YES
P1022			YES				YES
P2010			YES				YES
P2020			YES				YES
P210			YES				YES
P4040			YES		YES		YES
P4080			YES		YES		YES
PA6T-1352E			YES				YES
PA6T-1672M			YES				YES
PA6T-1682M			YES				YES
PBM 990 90			YES	YES			YES

CPU	ICE	FIRE	ICD DEBUG	ICD MONITOR	ICD TRACE	POWER INTEGRATOR	INSTRUCTION SIMULATOR
PC603R			YES				YES
PC7410			YES				YES
PC7447A			YES				YES
PC7448			YES				YES
PC745			YES				YES
PC7457			YES				YES
PC755			YES				YES
PC8240			YES				YES
PC8245			YES				YES
PC8265A			YES				YES
PC8270			YES				YES
PC8280			YES				YES
PC8540			YES				YES
PC8548			YES				YES
PC8572			YES				YES
PC8610			YES				YES
PC8641D			YES				YES
PCC-ISES			YES	YES			YES
PCD80703			YES	YES	YES		YES
PCD80705			YES	YES	YES		YES
PCD80708			YES	YES	YES		YES
PCD80715			YES	YES	YES		YES
PCD80716			YES	YES	YES		YES
PCD80718			YES	YES	YES		YES
PCD80720			YES	YES	YES		YES
PCD80721			YES	YES	YES		YES
PCD80725			YES	YES	YES		YES
PCD80727			YES	YES	YES		YES
PCD80728			YES	YES	YES		YES
PCF26002			YES	YES			YES
PCF26003			YES	YES			YES
PCF87750			YES	YES			YES
PCI2010			YES	YES			YES
PCI3610			YES	YES			YES
PCI3620			YES	YES			YES
PCI3700			YES	YES			YES
PCI3800			YES	YES			YES
PCI5110			YES	YES			YES
PCI9501			YES	YES			YES
PH21101			YES	YES			YES
PIC32MX			YES		YES		YES
PMB2850 E-GOLD		YES	YES	YES	YES		YES

CPU	ICE	FIRE	ICD DEBUG	ICD MONITOR	ICD TRACE	POWER INTEGRATOR	INSTRUCTION SIMULATOR
PMB6850 E-GOLD+		YES	YES	YES	YES		YES
PMB7754			YES	YES			YES
PMB7850 E-GOLD+			YES	YES	YES		YES
PMB7860			YES	YES	YES		YES
PMB7870			YES	YES	YES		YES
PMB7880			YES	YES	YES		YES
PMB7890			YES		YES		YES
PMB7900			YES		YES		YES
PMB8870			YES	YES	YES		YES
PMB8875			YES	YES	YES		YES
PMB8876			YES	YES	YES		YES
PMB8877			YES	YES	YES		YES
PMB8878			YES	YES	YES		YES
PMB8888			YES	YES	YES		YES
PNX8330			YES				YES
PNX8331			YES				YES
PNX8332			YES				YES
PNX8335			YES				YES
PNX8535			YES				YES
PNX8541			YES				YES
PNX8542			YES				YES
PNX8543			YES				YES
PNX8932			YES				YES
PNX8935			YES				YES
PPC401			YES		YES		YES
PPC403GA			YES		YES		YES
PPC403GB			YES		YES		YES
PPC403GC			YES		YES		YES
PPC403GCX			YES		YES		YES
PPC405			YES		YES		YES
PPC405A[...]			YES		YES		YES
PPC405B[...]			YES		YES		YES
PPC405C[...]			YES		YES		YES
PPC405CR			YES		YES		YES
PPC405D[...]			YES		YES		YES
PPC405E[...]			YES		YES		YES
PPC405EP			YES		YES		YES
PPC405EX			YES		YES		YES
PPC405F[...]			YES		YES		YES
PPC405GP			YES		YES		YES
PPC405GPR			YES		YES		YES
PPC405LP			YES		YES		YES

CPU	ICE	FIRE	ICD DEBUG	ICD MONITOR	ICD TRACE	POWER INTEGRATOR	INSTRUCTION SIMULATOR
PPC405PM			YES		YES		YES
PPC440			YES		YES		YES
PPC440A[.]			YES		YES		YES
PPC440EP			YES		YES		YES
PPC440EPX			YES		YES		YES
PPC440G[.]			YES		YES		YES
PPC440GP			YES		YES		YES
PPC440GR			YES		YES		YES
PPC440GRX			YES		YES		YES
PPC440GX			YES		YES		YES
PPC440SP			YES		YES		YES
PPC440SPE			YES		YES		YES
PPC460EX			YES		YES		YES
PPC460GT			YES		YES		YES
PPC460SX			YES		YES		YES
PPC603E3			YES				YES
PPC603EV2			YES				YES
PPC740			YES				YES
PPC750			YES				YES
PPC750CL			YES				YES
PPC750CX DD2.X			YES				YES
PPC750CXE DD2.X			YES				YES
PPC750CXR DD2.X			YES				YES
PPC750FL			YES				YES
PPC750FX DD2.X			YES				YES
PPC750GL			YES				YES
PPC750GX			YES				YES
PR3950			YES				YES
PR7530			YES				YES
PS7500FE			YES	YES			YES
PUC3030A			YES	YES			YES
PUC303XA			YES	YES			YES
PXA210			YES				YES
PXA250			YES				YES
PXA255			YES				YES
PXA260			YES				YES
PXA261			YES				YES
PXA262			YES				YES
PXA263			YES				YES
PXA270			YES				YES
PXA271			YES				YES
PXA272			YES				YES

CPU	ICE	FIRE	ICD DEBUG	ICD MONITOR	ICD TRACE	POWER INTEGRATOR	INSTRUCTION SIMULATOR
PXA273			YES				YES
PXA290			YES				YES
PXA300			YES				YES
PXA301			YES				YES
PXA302			YES				YES
PXA310			YES				YES
PXA311			YES				YES
PXA312			YES				YES
PXA320			YES				YES
PXA800EF			YES				YES
PXA800F			YES				YES
PXA901			YES				YES
PXA910			YES	YES			YES
PXA920			YES	YES			YES
PXB4260			YES		YES		YES
PXB9101			YES				YES
PXB9102			YES				YES
PXB9201			YES				YES
PXB9202			YES				YES
QSD8250			YES	YES	YES		YES
QSD8650			YES	YES	YES		YES
R8051XC			YES				
RC32332			YES		YES		
RC32333			YES		YES		
RC32334			YES		YES		
RC32336			YES		YES		
RC32351			YES		YES		
RC32355			YES		YES		
RC32364			YES		YES		
RC32365			YES		YES		
RC32438			YES				
RM7935			YES				YES
RM9000			YES				YES
RM9220			YES				YES
RM9224			YES				YES
RT3052			YES				YES
RT3662			YES				YES
RX610			YES		YES		YES
RX6108			YES		YES		YES
RX621			YES		YES		YES
RX62N			YES		YES		YES
RX630			YES		YES		YES

CPU	ICE	FIRE	ICD DEBUG	ICD MONITOR	ICD TRACE	POWER INTEGRATOR	INSTRUCTION SIMULATOR
S3C2400X			YES	YES			YES
S3C2410			YES	YES			YES
S3C2410X			YES	YES			YES
S3C2416			YES	YES			YES
S3C2440A			YES	YES			YES
S3C2442B			YES	YES			YES
S3C2443X			YES	YES			YES
S3C2450			YES	YES			YES
S3C2500A			YES	YES			YES
S3C2510			YES	YES			YES
S3C2800X			YES	YES			YES
S3C3400A			YES	YES			YES
S3C3400X			YES	YES			YES
S3C3410X			YES	YES			YES
S3C44A0A			YES	YES			YES
S3C44B0X			YES	YES			YES
S3C4510B			YES	YES			YES
S3C4520A			YES	YES			YES
S3C4530A			YES	YES			YES
S3C4610D			YES	YES			YES
S3C4620D			YES	YES			YES
S3C4640X			YES	YES			YES
S3C4650D			YES	YES			YES
S3C46C0			YES	YES			YES
S3C46M0X			YES	YES			YES
S3C4909A			YES	YES			YES
S3C49F9X			YES	YES			YES
S3C6400			YES	YES			YES
S3C6410			YES	YES			YES
S3F441FX			YES	YES			YES
S3F460H			YES	YES			YES
S5N8946			YES	YES			YES
S5N8947			YES	YES			YES
SC000			YES	YES	YES		YES
SC100			YES	YES			YES
SC110			YES	YES			YES
SC200			YES	YES	YES		YES
SC210			YES	YES	YES		YES
SC300			YES	YES	YES		YES
SCORPIO			YES	YES			YES
SCORPION			YES	YES	YES		YES
SDA6000 M2			YES	YES	YES		YES

CPU	ICE	FIRE	ICD DEBUG	ICD MONITOR	ICD TRACE	POWER INTEGRATOR	INSTRUCTION SIMULATOR
SE470R1VB8AD			YES	YES	YES		YES
SH2A-CORE			YES		YES		YES
SH7047F			YES				YES
SH7058			YES				YES
SH7058R			YES				YES
SH7059			YES				YES
SH7144			YES				YES
SH7145			YES				YES
SH7201			YES		YES		YES
SH7203			YES		YES		YES
SH7205			YES		YES		YES
SH7206			YES		YES		YES
SH7211			YES		YES		YES
SH7251			YES		YES		YES
SH72531			YES		YES		YES
SH72544			YES		YES		YES
SH72544R			YES		YES		YES
SH72545			YES		YES		YES
SH72567			YES		YES		YES
SH725XX			YES		YES		YES
SH7261			YES		YES		YES
SH7262			YES		YES		YES
SH7263			YES		YES		YES
SH7264			YES		YES		YES
SH7294			YES		YES		YES
SH7300			YES		YES		YES
SH7315			YES		YES		YES
SH73382			YES		YES		YES
SH7357			YES		YES		YES
SH74504			YES		YES		YES
SH7615			YES				YES
SH7622			YES				YES
SH7705			YES		YES		YES
SH7706			YES		YES		YES
SH7709A			YES		YES		YES
SH7709BE			YES		YES		YES
SH7709LE			YES		YES		YES
SH7709S			YES		YES		YES
SH7710			YES		YES		YES
SH7712			YES		YES		YES
SH7720			YES		YES		YES
SH7721			YES		YES		YES

CPU	ICE	FIRE	ICD DEBUG	ICD MONITOR	ICD TRACE	POWER INTEGRATOR	INSTRUCTION SIMULATOR
SH7722			YES		YES		YES
SH7723			YES		YES		YES
SH7727			YES		YES		YES
SH7729			YES		YES		YES
SH7750			YES				YES
SH7750R			YES				YES
SH7751			YES		YES		YES
SH7751R			YES		YES		YES
SH7760			YES		YES		YES
SH7761			YES		YES		YES
SH7763			YES		YES		YES
SH7764			YES		YES		YES
SH7770			YES		YES		YES
SH7780			YES		YES		YES
SH7781			YES		YES		YES
SH7785			YES		YES		YES
SH7786			YES		YES		YES
SIRFSTARII			YES	YES			YES
SJA2020			YES	YES			YES
SOCLITE+			YES	YES			YES
SP2503			YES	YES			YES
SP2506			YES	YES			YES
SP2512			YES	YES			YES
SP2603			YES	YES			YES
SP2606			YES	YES			YES
SP2612			YES	YES			YES
SPC560B			YES				YES
SPC560D			YES				YES
SPC560P			YES				YES
SPC560S			YES				YES
SPC563M			YES				YES
SPC564A			YES				YES
SPC564B			YES				YES
SPC56EC			YES				YES
SPC56EL			YES				YES
SPC56HK			YES				YES
SPEAR300			YES	YES			YES
SPEAR600			YES	YES			YES
ST10R302			YES	YES			YES
ST10R303			YES	YES	YES		YES
ST30F7XXA			YES	YES	YES		YES
ST30F7XXC			YES	YES	YES		YES

CPU	ICE	FIRE	ICD DEBUG	ICD MONITOR	ICD TRACE	POWER INTEGRATOR	INSTRUCTION SIMULATOR
ST30F7XXZ			YES	YES	YES		YES
ST40GX1			YES		YES		YES
ST40NGX1			YES		YES		YES
ST40RA166			YES		YES		YES
ST40STB1			YES		YES		YES
STA2051			YES	YES			YES
STB7100			YES				YES
STB7109			YES				YES
STM32F100C4			YES	YES	YES		YES
STM32F100C6			YES	YES	YES		YES
STM32F100C8			YES	YES	YES		YES
STM32F100CB			YES	YES	YES		YES
STM32F100R4			YES	YES	YES		YES
STM32F100R6			YES	YES	YES		YES
STM32F100R8			YES	YES	YES		YES
STM32F100RB			YES	YES	YES		YES
STM32F100V8			YES	YES	YES		YES
STM32F100VB			YES	YES	YES		YES
STM32F101C4			YES	YES	YES		YES
STM32F101C6			YES	YES	YES		YES
STM32F101C8			YES	YES	YES		YES
STM32F101CB			YES	YES	YES		YES
STM32F101R6			YES	YES	YES		YES
STM32F101R8			YES	YES	YES		YES
STM32F101RB			YES	YES	YES		YES
STM32F101RC			YES	YES	YES		YES
STM32F101RD			YES	YES	YES		YES
STM32F101RE			YES	YES	YES		YES
STM32F101RF			YES	YES	YES		YES
STM32F101RG			YES	YES	YES		YES
STM32F101T4			YES	YES	YES		YES
STM32F101T6			YES	YES	YES		YES
STM32F101T8			YES	YES	YES		YES
STM32F101V8			YES	YES	YES		YES
STM32F101VB			YES	YES	YES		YES
STM32F101VC			YES	YES	YES		YES
STM32F101VD			YES	YES	YES		YES
STM32F101VE			YES	YES	YES		YES
STM32F101VF			YES	YES	YES		YES
STM32F101VG			YES	YES	YES		YES
STM32F101ZC			YES	YES	YES		YES
STM32F101ZD			YES	YES	YES		YES

CPU	ICE	FIRE	ICD DEBUG	ICD MONITOR	ICD TRACE	POWER INTEGRATOR	INSTRUCTION SIMULATOR
STM32F101ZE			YES	YES	YES		YES
STM32F101ZF			YES	YES	YES		YES
STM32F101ZG			YES	YES	YES		YES
STM32F102C4			YES	YES	YES		YES
STM32F102C6			YES	YES	YES		YES
STM32F102C8			YES	YES	YES		YES
STM32F102CB			YES	YES	YES		YES
STM32F102R4			YES	YES	YES		YES
STM32F102R6			YES	YES	YES		YES
STM32F102R8			YES	YES	YES		YES
STM32F102RB			YES	YES	YES		YES
STM32F103C4			YES	YES	YES		YES
STM32F103C6			YES	YES	YES		YES
STM32F103C8			YES	YES	YES		YES
STM32F103CB			YES	YES	YES		YES
STM32F103R4			YES	YES	YES		YES
STM32F103R6			YES	YES	YES		YES
STM32F103R8			YES	YES	YES		YES
STM32F103RB			YES	YES	YES		YES
STM32F103RC			YES	YES	YES		YES
STM32F103RD			YES	YES	YES		YES
STM32F103RE			YES	YES	YES		YES
STM32F103RF			YES	YES	YES		YES
STM32F103RG			YES	YES	YES		YES
STM32F103T4			YES	YES	YES		YES
STM32F103T6			YES	YES	YES		YES
STM32F103T8			YES	YES	YES		YES
STM32F103V8			YES	YES	YES		YES
STM32F103VB			YES	YES	YES		YES
STM32F103VC			YES	YES	YES		YES
STM32F103VD			YES	YES	YES		YES
STM32F103VE			YES	YES	YES		YES
STM32F103VF			YES	YES	YES		YES
STM32F103VG			YES	YES	YES		YES
STM32F103ZC			YES	YES	YES		YES
STM32F103ZD			YES	YES	YES		YES
STM32F103ZE			YES	YES	YES		YES
STM32F103ZF			YES	YES	YES		YES
STM32F103ZG			YES	YES	YES		YES
STM32F105R8			YES	YES	YES		YES
STM32F105RB			YES	YES	YES		YES
STM32F105RC			YES	YES	YES		YES

CPU	ICE	FIRE	ICD DEBUG	ICD MONITOR	ICD TRACE	POWER INTEGRATOR	INSTRUCTION SIMULATOR
STM32F105V8			YES	YES	YES		YES
STM32F105VB			YES	YES	YES		YES
STM32F105VC			YES	YES	YES		YES
STM32F107RB			YES	YES	YES		YES
STM32F107RC			YES	YES	YES		YES
STM32F107VB			YES	YES	YES		YES
STM32F107VC			YES	YES	YES		YES
STM32L151C8			YES	YES	YES		YES
STM32L151CB			YES	YES	YES		YES
STM32L151R8			YES	YES	YES		YES
STM32L151RB			YES	YES	YES		YES
STM32L151V8			YES	YES	YES		YES
STM32L151VB			YES	YES	YES		YES
STM32L152C8			YES	YES	YES		YES
STM32L152CB			YES	YES	YES		YES
STM32L152R8			YES	YES	YES		YES
STM32L152RB			YES	YES	YES		YES
STM32L152V8			YES	YES	YES		YES
STM32L152VB			YES	YES	YES		YES
STM32W108CB			YES	YES	YES		YES
STM32W108HB			YES	YES	YES		YES
STN8810			YES	YES	YES		YES
STN8815			YES	YES	YES		YES
STR710			YES	YES			YES
STR711			YES	YES			YES
STR712			YES	YES			YES
STR715			YES	YES			YES
STR720			YES	YES	YES		YES
STR730			YES	YES			YES
STR731			YES	YES			YES
STR735			YES	YES			YES
STR736			YES	YES			YES
STR750FV			YES	YES			YES
STR751FR			YES	YES			YES
STR752FR			YES	YES			YES
STR755FR			YES	YES			YES
STR755FV			YES	YES			YES
STR910FAM32			YES	YES	YES		YES
STR910FAW32			YES	YES	YES		YES
STR910FAZ32			YES	YES	YES		YES
STR911FAM42			YES	YES	YES		YES
STR911FAM44			YES	YES	YES		YES

CPU	ICE	FIRE	ICD DEBUG	ICD MONITOR	ICD TRACE	POWER INTEGRATOR	INSTRUCTION SIMULATOR
STR911FAM46			YES	YES	YES		YES
STR911FAM47			YES	YES	YES		YES
STR911FAW42			YES	YES	YES		YES
STR911FAW44			YES	YES	YES		YES
STR911FAW46			YES	YES	YES		YES
STR911FAW47			YES	YES	YES		YES
STR912FAW42			YES	YES	YES		YES
STR912FAW44			YES	YES	YES		YES
STR912FAW46			YES	YES	YES		YES
STR912FAW47			YES	YES	YES		YES
STR912FAZ42			YES	YES	YES		YES
STR912FAZ44			YES	YES	YES		YES
STR912FAZ46			YES	YES	YES		YES
STR912FAZ47			YES	YES	YES		YES
STW2400			YES	YES			YES
T6TC1XB-0001			YES	YES			YES
T8300			YES	YES			YES
T8302			YES	YES			YES
TA7S05			YES	YES			YES
TA7S12			YES	YES			YES
TA7S20			YES	YES			YES
TA7S32			YES	YES			YES
TC10GP			YES		YES		YES
TC1100			YES		YES		YES
TC1115			YES		YES		YES
TC1130			YES		YES		YES
TC1161			YES	YES	YES		YES
TC1162			YES	YES	YES		YES
TC1163			YES	YES	YES		YES
TC1164			YES	YES	YES		YES
TC1165			YES	YES	YES		YES
TC1166			YES	YES	YES		YES
TC1167			YES				YES
TC1182			YES				YES
TC1184			YES				YES
TC1197			YES				YES
TC11IA			YES		YES		YES
TC11IB			YES		YES		YES
TC11IC			YES		YES		YES
TC1202			YES				
TC1337			YES				YES
TC1367			YES				YES

CPU	ICE	FIRE	ICD DEBUG	ICD MONITOR	ICD TRACE	POWER INTEGRATOR	INSTRUCTION SIMULATOR
TC1387			YES				YES
TC1387ED			YES				YES
TC1401			YES				
TC1402			YES				
TC1736			YES				YES
TC1736ED			YES				YES
TC1746			YES				YES
TC1762			YES	YES	YES		YES
TC1764			YES	YES	YES		YES
TC1765			YES		YES		YES
TC1766			YES	YES	YES		YES
TC1766ED			YES	YES	YES		YES
TC1767			YES				YES
TC1767ED			YES				YES
TC1768			YES				YES
TC1775			YES		YES		YES
TC1782			YES				YES
TC1782ED			YES				YES
TC1784			YES				YES
TC1784ED			YES				YES
TC1791			YES				YES
TC1791ED			YES				YES
TC1792			YES	YES	YES		YES
TC1793			YES				YES
TC1793ED			YES				YES
TC1796			YES	YES	YES		YES
TC1796ED			YES	YES	YES		YES
TC1796L			YES	YES	YES		YES
TC1797			YES				YES
TC1797ED			YES				YES
TC1798			YES				YES
TC1798ED			YES				YES
TC1910			YES		YES		YES
TC1912			YES		YES		YES
TC1920			YES		YES		YES
TC2400			YES				
TEAK-REVA			YES				
TEAK-REVB			YES				
TEAK-RTL2.0			YES				
TEAKLITE			YES				
TEAKLITE-II			YES				
TEAKLITE-III			YES		YES		

CPU	ICE	FIRE	ICD DEBUG	ICD MONITOR	ICD TRACE	POWER INTEGRATOR	INSTRUCTION SIMULATOR
TEAKLITEDEV-A			YES				
TEAKLITEDEV-B			YES				
TEAKLITEDEV-C			YES				
TL3210			YES		YES		
TMS320C2801			YES				
TMS320C2802			YES				
TMS320C5501			YES				
TMS320C5502			YES				
TMS320C5503			YES				
TMS320C5506			YES				
TMS320C5507			YES				
TMS320C5509			YES				
TMS320C5509A			YES				
TMS320C5510			YES				
TMS320C6410			YES				
TMS320C6411			YES				
TMS320C6412			YES				
TMS320C6413			YES				
TMS320C6414			YES				
TMS320C6415			YES				
TMS320C6416			YES				
TMS320C6418			YES				
TMS320C6424			YES				
TMS320C6455			YES				
TMS320C6482			YES				
TMS320DM335			YES	YES			YES
TMS320DM355			YES	YES			YES
TMS320DM357			YES	YES			YES
TMS320DM365			YES	YES			YES
TMS320DM640			YES				
TMS320DM641			YES				
TMS320DM642			YES				
TMS320DM643			YES				
TMS320DM6431			YES				
TMS320DM6433			YES				
TMS320DM6435			YES				
TMS320DM6437			YES				
TMS320DM6441			YES	YES			YES
TMS320DM6443			YES	YES			YES
TMS320DM6446			YES	YES			YES
TMS320DM6467			YES	YES			YES
TMS320DRA442			YES	YES			YES

CPU	ICE	FIRE	ICD DEBUG	ICD MONITOR	ICD TRACE	POWER INTEGRATOR	INSTRUCTION SIMULATOR
TMS320DRA444			YES	YES			YES
TMS320DRA446			YES	YES			YES
TMS320DRX457			YES	YES			YES
TMS320DRX459			YES	YES			YES
TMS320F2801			YES				
TMS320F28015			YES				
TMS320F28016			YES				
TMS320F2802			YES				
TMS320F28035			YES				
TMS320F28044			YES				
TMS320F2806			YES				
TMS320F2808			YES				
TMS320F2809			YES				
TMS320F2810			YES				
TMS320F2811			YES				
TMS320F2812			YES				
TMS320F28232			YES				
TMS320F28234			YES				
TMS320F28235			YES				
TMS320F28332			YES				
TMS320F28334			YES				
TMS320F28335			YES				
TMS320TCI6488			YES		YES		
TMS320VC5402			YES				
TMS320VC5404			YES				
TMS320VC5407			YES				
TMS320VC5409			YES				
TMS320VC5410			YES				
TMS320VC5416			YES				
TMS320VC5420			YES				
TMS320VC5421			YES				
TMS320VC5441			YES				
TMS320VC5470			YES	YES	YES		YES
TMS320VC5471			YES	YES			YES
TMS320VC549			YES				
TMS470MSF541			YES	YES	YES		YES
TMS470MSF542			YES	YES	YES		YES
TMS470PVF241			YES	YES			YES
TMS470PVF344			YES	YES			YES
TMS470Q			YES	YES			YES
TMS470R1VC336A			YES	YES			YES
TMS470R1VC338			YES	YES			YES

CPU	ICE	FIRE	ICD DEBUG	ICD MONITOR	ICD TRACE	POWER INTEGRATOR	INSTRUCTION SIMULATOR
TMS470R1VC346A			YES	YES			YES
TMS470R1VC348			YES	YES			YES
TMS470R1VC688			YES	YES			YES
TMS470R1VF288			YES	YES			YES
TMS470R1VF336			YES	YES			YES
TMS470R1VF336A			YES	YES			YES
TMS470R1VF338			YES	YES			YES
TMS470R1VF346A			YES	YES			YES
TMS470R1VF348			YES	YES			YES
TMS470R1VF356A			YES	YES			YES
TMS470R1VF37A			YES	YES			YES
TMS470R1VF448			YES	YES			YES
TMS470R1VF45A			YES	YES			YES
TMS470R1VF45AA			YES	YES			YES
TMS470R1VF45B			YES	YES			YES
TMS470R1VF45BA			YES	YES			YES
TMS470R1VF478			YES	YES			YES
TMS470R1VF48B			YES	YES			YES
TMS470R1VF48C			YES	YES			YES
TMS470R1VF55B			YES	YES			YES
TMS470R1VF55BA			YES	YES			YES
TMS470R1VF67A			YES	YES			YES
TMS470R1VF688			YES	YES			YES
TMS470R1VF689			YES	YES			YES
TMS470R1VF76B			YES	YES			YES
TMS470R1VF7AC			YES	YES			YES
TMS570			YES	YES	YES		YES
TNETC4320			YES				YES
TSPC603R			YES				YES
TX4938			YES		YES		YES
UPD65977			YES	YES			YES
UPD78F1000			YES				
UPD78F1001			YES				
UPD78F1002			YES				
UPD78F1003			YES				
UPD78F1004			YES				
UPD78F1005			YES				
UPD78F1006			YES				
UPD78F1007			YES				
UPD78F1008			YES				
UPD78F1009			YES				
UPD78F1010			YES				

CPU	ICE	FIRE	ICD DEBUG	ICD MONITOR	ICD TRACE	POWER INTEGRATOR	INSTRUCTION SIMULATOR
UPD78F1011			YES				
UPD78F1012			YES				
UPD78F1013			YES				
UPD78F1014			YES				
UPD78F1016			YES				
UPD78F1017			YES				
UPD78F1018			YES				
UPD78F1022			YES				
UPD78F1023			YES				
UPD78F1024			YES				
UPD78F1025			YES				
UPD78F1026			YES				
UPD78F1031			YES				
UPD78F1032			YES				
UPD78F1033			YES				
UPD78F1034			YES				
UPD78F1035			YES				
UPD78F1036			YES				
UPD78F1037			YES				
UPD78F1038			YES				
UPD78F1039			YES				
UPD78F1040			YES				
UPD78F1041			YES				
UPD78F1042			YES				
UPD78F1043			YES				
UPD78F1044			YES				
UPD78F1045			YES				
UPD78F1046			YES				
UPD78F1047			YES				
UPD78F1048			YES				
UPD78F1049			YES				
UPD78F1050			YES				
UPD78F1142			YES				
UPD78F1143			YES				
UPD78F1144			YES				
UPD78F1145			YES				
UPD78F1146			YES				
UPD78F1152			YES				
UPD78F1153			YES				
UPD78F1154			YES				
UPD78F1155			YES				
UPD78F1156			YES				

CPU	ICE	FIRE	ICD DEBUG	ICD MONITOR	ICD TRACE	POWER INTEGRATOR	INSTRUCTION SIMULATOR
UPD78F1162			YES				
UPD78F1163			YES				
UPD78F1164			YES				
UPD78F1165			YES				
UPD78F1166			YES				
UPD78F1167			YES				
UPD78F1168			YES				
UPD78F1174			YES				
UPD78F1175			YES				
UPD78F1176			YES				
UPD78F1177			YES				
UPD78F1178			YES				
UPD78F1184			YES				
UPD78F1185			YES				
UPD78F1186			YES				
UPD78F1187			YES				
UPD78F1188			YES				
UPD78F1201			YES				
UPD78F1203			YES				
UPD78F1211			YES				
UPD78F1213			YES				
UPD78F1214			YES				
UPD78F1215			YES				
UPD78F1223			YES				
UPD78F1224			YES				
UPD78F1225			YES				
UPD78F1233			YES				
UPD78F1234			YES				
UPD78F1235			YES				
UPD78F1500			YES				
UPD78F1501			YES				
UPD78F1502			YES				
UPD78F1503			YES				
UPD78F1504			YES				
UPD78F1505			YES				
UPD78F1506			YES				
UPD78F1507			YES				
UPD78F1508			YES				
UPD78F1804			YES				
UPD78F1805			YES				
UPD78F1806			YES				
UPD78F1807			YES				

CPU	ICE	FIRE	ICD DEBUG	ICD MONITOR	ICD TRACE	POWER INTEGRATOR	INSTRUCTION SIMULATOR
UPD78F1808			YES				
UPD78F1809			YES				
UPD78F1810			YES				
UPD78F1811			YES				
UPD78F1812			YES				
UPD78F1813			YES				
UPD78F1814			YES				
UPD78F1815			YES				
UPD78F1816			YES				
UPD78F1817			YES				
UPD78F1818			YES				
UPD78F1819			YES				
UPD78F1820			YES				
UPD78F1821			YES				
UPD78F1822			YES				
UPD78F1823			YES				
UPD78F1824			YES				
UPD78F1825			YES				
UPD78F1826			YES				
UPD78F1827			YES				
UPD78F1828			YES				
UPD78F1829			YES				
UPD78F1830			YES				
UPD78F1831			YES				
UPD78F1832			YES				
UPD78F1833			YES				
UPD78F1834			YES				
UPD78F1835			YES				
UPD78F1836			YES				
UPD78F1837			YES				
UPD78F1838			YES				
UPD78F1839			YES				
UPD78F1840			YES				
UPD78F1841			YES				
UPD78F1842			YES				
UPD78F1843			YES				
UPD78F1844			YES				
UPD78F1845			YES				
UPD78F1846			YES				
UPD78F1847			YES				
UPD78F1848			YES				
UPD78F1849			YES				

CPU	ICE	FIRE	ICD DEBUG	ICD MONITOR	ICD TRACE	POWER INTEGRATOR	INSTRUCTION SIMULATOR
UPD78F8040			YES				
UPD78F8041			YES				
UPD78F8042			YES				
UPD78F8043			YES				
UPD78F8056			YES				
UPD78F8057			YES				
UPD78F8058			YES				
UPLAT CORE			YES	YES			YES
V850E/IA4			YES				YES
V850E/MA3			YES				YES
V850E/ME2			YES		YES		YES
V850E/ME3			YES				YES
V850E/PH2			YES				YES
V850E/PH3			YES				YES
V850E/PHOENIX-F			YES				YES
V850E/PHOENIX-FS			YES				YES
V850E/RS1			YES				YES
V850ES/DG2			YES				YES
V850ES/DG3			YES				YES
V850ES/DJ2			YES				YES
V850ES/DJ3			YES				YES
V850ES/DJ4			YES				YES
V850ES/DK4-H			YES				YES
V850ES/DL3			YES				YES
V850ES/DN4-H			YES				YES
V850ES/DR4-3D			YES				YES
V850ES/DX3			YES				YES
V850ES/DX4			YES				YES
V850ES/FE2			YES				YES
V850ES/FE3			YES				YES
V850ES/FF2			YES				YES
V850ES/FF3			YES				YES
V850ES/FG2			YES				YES
V850ES/FG3			YES				YES
V850ES/FJ2			YES				YES
V850ES/FJ3			YES				YES
V850ES/FK3			YES				YES
V850ES/HE2			YES				YES
V850ES/HE3			YES				YES
V850ES/HF2			YES				YES
V850ES/HF3			YES				YES
V850ES/HG2			YES				YES

CPU	ICE	FIRE	ICD DEBUG	ICD MONITOR	ICD TRACE	POWER INTEGRATOR	INSTRUCTION SIMULATOR
V850ES/HG3			YES				YES
V850ES/HJ2			YES				YES
V850ES/HJ3			YES				YES
V850ES/HX2			YES				YES
V850ES/HX3			YES				YES
V850ES/IG4			YES				YES
V850ES/IG4-H			YES				YES
V850ES/IH4			YES				YES
V850ES/IH4-H			YES				YES
V850ES/IX4			YES				YES
V850ES/IX4-H			YES				YES
V850ES/JC3-H			YES				YES
V850ES/JC3-L			YES				YES
V850ES/JD3-H			YES				YES
V850ES/JE3-E			YES				YES
V850ES/JE3-H			YES				YES
V850ES/JE3-L			YES				YES
V850ES/JF3-E			YES				YES
V850ES/JF3-L			YES				YES
V850ES/JG2			YES				YES
V850ES/JG3			YES				YES
V850ES/JG3-E			YES				YES
V850ES/JG3-L			YES				YES
V850ES/JH3-E			YES				YES
V850ES/JJ2			YES				YES
V850ES/JJ3			YES				YES
V850ES/JJ3-E			YES				YES
V850ES/JK1+			YES				YES
V850ES/JX2			YES				YES
V850ES/JX3			YES				YES
V850ES/JX3-E			YES				YES
V850ES/JX3-H			YES				YES
V850ES/JX3-L			YES				YES
V850ES/PG4			YES				YES
V850ES/PJ4			YES				YES
V850ES/PX4			YES				YES
V850ES/SG2			YES				YES
V850ES/SG3			YES				YES
V850ES/SJ2			YES				YES
V850ES/SJ3			YES				YES
V850ES/SJ3-H			YES				YES
V850ES/SK3-H			YES				YES

CPU	ICE	FIRE	ICD DEBUG	ICD MONITOR	ICD TRACE	POWER INTEGRATOR	INSTRUCTION SIMULATOR
V850FE4-L			YES				YES
V850FF4-L			YES				YES
V850FG4			YES				YES
V850FG4-L			YES				YES
V850FJ4			YES				YES
V850FJ4-L			YES				YES
V850FK4			YES				YES
V850FK4-H			YES				YES
V850FK4-L			YES				YES
V850FKG4			YES				YES
V850FL4			YES				YES
V850FL4-H			YES				YES
V850FM4-H			YES				YES
V850FX4-H			YES				YES
V850FX4-L			YES				YES
VCS94250			YES	YES			YES
VCT6WXP			YES				
VCT7WXP			YES				
VCT8WXP			YES				
VCT9WXP			YES		YES		YES
VDSL5100I			YES				YES
VGCA			YES		YES		YES
VGCB			YES		YES		YES
VMS747			YES	YES			YES
VR5500A			YES		YES		YES
VR5701			YES		YES		YES
VWS22100			YES	YES			YES
VWS22110			YES	YES			YES
VWS23112			YES	YES			YES
VWS23201			YES	YES			YES
VWS23202			YES	YES			YES
VWS26001			YES	YES			YES
WIN1XX			YES				YES
WIN7XX			YES				YES
WINPATH2			YES				YES
WINPATH3			YES				YES
X226 (MIPS4KEC)			YES				YES
XC161CJ		YES	YES	YES	YES		YES
XC161CS		YES	YES	YES	YES		YES
XC164CM		YES	YES	YES	YES		YES
XC164CS		YES	YES	YES	YES		YES
XC164D		YES	YES	YES			YES

CPU	ICE	FIRE	ICD DEBUG	ICD MONITOR	ICD TRACE	POWER INTEGRATOR	INSTRUCTION SIMULATOR
XC164GM		YES	YES	YES			YES
XC164KM		YES	YES	YES			YES
XC164LM		YES	YES	YES			YES
XC164N		YES	YES	YES			YES
XC164S		YES	YES	YES			YES
XC164SM		YES	YES	YES			YES
XC164TM		YES	YES	YES			YES
XC167CI		YES	YES	YES	YES		YES
XC2000ED			YES	YES			YES
XC2210U			YES	YES			YES
XC2220L			YES	YES			YES
XC2220U			YES	YES			YES
XC2224L			YES	YES			YES
XC2230L			YES	YES			YES
XC2234L			YES	YES			YES
XC2234N			YES	YES			YES
XC2236N			YES	YES			YES
XC2237M			YES	YES			YES
XC2238M			YES	YES			YES
XC2238N			YES	YES			YES
XC2263M			YES	YES			YES
XC2263N			YES	YES			YES
XC2264			YES	YES			YES
XC2265M			YES	YES			YES
XC2265N			YES	YES			YES
XC2267			YES	YES			YES
XC2267M			YES	YES			YES
XC2268I			YES	YES			YES
XC2268N			YES	YES			YES
XC2269I			YES	YES			YES
XC2285			YES	YES			YES
XC2285M			YES	YES			YES
XC2286			YES	YES			YES
XC2286M			YES	YES			YES
XC2287			YES	YES			YES
XC2287M			YES	YES			YES
XC2288H			YES	YES			YES
XC2288I			YES	YES			YES
XC2289H			YES	YES			YES
XC2289I			YES	YES			YES
XC2298H			YES	YES			YES
XC2299H			YES	YES			YES

CPU	ICE	FIRE	ICD DEBUG	ICD MONITOR	ICD TRACE	POWER INTEGRATOR	INSTRUCTION SIMULATOR
XC2310S			YES	YES			YES
XC2320D			YES	YES			YES
XC2320S			YES	YES			YES
XC2321D			YES	YES			YES
XC2330D			YES	YES			YES
XC2331D			YES	YES			YES
XC2336A			YES	YES			YES
XC2336B			YES	YES			YES
XC2361A			YES	YES			YES
XC2361B			YES	YES			YES
XC2361E			YES	YES			YES
XC2363A			YES	YES			YES
XC2363B			YES	YES			YES
XC2364A			YES	YES			YES
XC2364B			YES	YES			YES
XC2365			YES	YES			YES
XC2365A			YES	YES			YES
XC2365B			YES	YES			YES
XC2367E			YES	YES			YES
XC2368E			YES	YES			YES
XC2385A			YES	YES			YES
XC2387			YES	YES			YES
XC2387A			YES	YES			YES
XC2387C			YES	YES			YES
XC2387E			YES	YES			YES
XC2388C			YES	YES			YES
XC2388E			YES	YES			YES
XC2712X			YES	YES			YES
XC2722X			YES	YES			YES
XC2723X			YES	YES			YES
XC2733X			YES	YES			YES
XC2734X			YES	YES			YES
XC2735X			YES	YES			YES
XC2764X			YES	YES			YES
XC2765X			YES	YES			YES
XC2766X			YES	YES			YES
XC2768X			YES	YES			YES
XC2785X			YES	YES			YES
XC2786X			YES	YES			YES
XC2787X			YES	YES			YES
XC2788X			YES	YES			YES
XC2797X			YES	YES			YES

CPU	ICE	FIRE	ICD DEBUG	ICD MONITOR	ICD TRACE	POWER INTEGRATOR	INSTRUCTION SIMULATOR
XC866			YES				
XC866L			YES				
XC878			YES				
XC878C			YES				
XC878CM			YES				
XC878L			YES				
XC878M			YES				
XC886			YES				
XC886C			YES				
XC886CLM			YES				
XC886CM			YES				
XC886LM			YES				
XC888			YES				
XC888C			YES				
XC888CLM			YES				
XC888CM			YES				
XC888LM			YES				
XE160FU			YES	YES			YES
XE161FL			YES	YES			YES
XE161FU			YES	YES			YES
XE162FL			YES	YES			YES
XE162FM			YES	YES			YES
XE162FN			YES	YES			YES
XE162HM			YES	YES			YES
XE162HN			YES	YES			YES
XE164F			YES	YES			YES
XE164FM			YES	YES			YES
XE164FN			YES	YES			YES
XE164G			YES	YES			YES
XE164GM			YES	YES			YES
XE164GN			YES	YES			YES
XE164H			YES	YES			YES
XE164HM			YES	YES			YES
XE164HN			YES	YES			YES
XE164K			YES	YES			YES
XE164KM			YES	YES			YES
XE164KN			YES	YES			YES
XE167F			YES	YES			YES
XE167FH			YES	YES			YES
XE167FM			YES	YES			YES
XE167G			YES	YES			YES
XE167GM			YES	YES			YES

CPU	ICE	FIRE	ICD DEBUG	ICD MONITOR	ICD TRACE	POWER INTEGRATOR	INSTRUCTION SIMULATOR
XE167H			YES	YES			YES
XE167HM			YES	YES			YES
XE167K			YES	YES			YES
XE167KM			YES	YES			YES
XE169FH			YES	YES			YES
XPERTTEAK			YES				
XPERTTKL-II			YES				
Z500			YES				YES
Z510			YES				YES
Z510P			YES				YES
Z510PT			YES				YES
Z515			YES				YES
Z520			YES				YES
Z520PT			YES				YES
Z530			YES				YES
Z530P			YES				YES
Z540			YES				YES
Z550			YES				YES
Z560			YES				YES
Z6XX			YES				YES
ZSP400			YES				

Operation Voltage

Adapter	Code	OrderNo	Voltage Range
JTAG Debugger for ST40 (ICD)	JTAG-ST40	LA-3710	3.0 .. 3.6 V
JTAG Debugger for CEVA-X (ICD)	JTAG-CEVAX	LA-3711	3.0 .. 3.6 V
JTAG Debugger License for CEVA-X Additional	JTAG-CEVAX-A	LA-3711A	3.0 .. 3.6 V
JTAG Debugger for ZSP500 DSP Core (ICD)	JTAG-ZSP500	LA-3712	1.8 .. 3.6 V
JTAG Debugger for ZSP500 DSP Core Additional	JTAG-ZSP500-A	LA-3712A	1.8 .. 3.6 V
Debugger for MicroBlaze (ICD)	JTAG-MICROBLAZE	LA-3730	1.8 .. 3.6 V
JTAG Debug. Lic. for MicroBlaze Add.+Adapter	JTAG-MICROBLAZE-A	LA-3730A	1.8 .. 3.6 V
OCDS Debugger for XC800 (ICD)	OCDS-XC800	LA-3732	2.5 .. 5.2 V
JTAG Debugger for MPC86xx (ICD)	DEBUG-MPC86XX	LA-3735	3.0 .. 3.6 V
JTAG Debugger Extension for MPC86xx	DEBUG-MPC86XX-X	LA-3735X	3.0 .. 3.6 V
JTAG Debugger for H8SX (ICD)	JTAG-H8SX	LA-3745	3.0 .. 5.2 V
JTAG Debugger Extension for H8SX (ICD)	JTAG-H8SX-X	LA-3745X	3.0 .. 5.2 V
JTAG Debugger for ARC (ICD)	JTAG-ARC	LA-3750	0.4 .. 5.2 V
JTAG Debugger License for ARC Add.	JTAG-ARC-A	LA-3750A	0.4 .. 5.2 V
JTAG Debugger for ARC XDP 60 (ICD)	JTAG-ARC-XDP	LA-3752	0.4 .. 5.2 V
JTAG Debugger for PWRficient (ICD)	DEBUG-PWRFICIENT	LA-3754	1.6 .. 5.0 V
JTAG Debugger for AndesCore (ICD)	JTAG-ANDES	LA-3756	0.4 .. 5.2 V
JTAG Debugger for Xtensa	JTAG-XTENSA	LA-3760	0.4 .. 5.2 V
JTAG Debugger License for Xtensa Add.	JTAG-XTENSA-A	LA-3760A	0.4 .. 5.2 V
JTAG Debugger for TeakLite III (ICD)	JTAG-TEAKLITE-III	LA-3774	0.4 .. 5.2 V
JTAG Debugger for TeakLite III Add. (ICD)	JTAG-TEAKLITE-III-A	LA-3774A	0.4 .. 5.2 V
JTAG Debugger Extension for TEAKLITE-III	JTAG-TEAKLITE-III-X	LA-3774X	0.4 .. 5.2 V
JTAG Debugger for Intel® Atom™ (ICD)	DEBUG-ATOM	LA-3776	1.6 .. 5.5 V
JTAG Debugger for Atom™ Add.	DEBUG-ATOM-A	LA-3776A	1.6 .. 5.5 V
Debugger for 78K0R (ICD)	DEBUG-78K0R	LA-3777	1.6 .. 5.5 V

Adapter	Code	OrderNo	Voltage Range
JTAG Debugger for APS 60 (ICD)	JTAG-APS-60	LA-3778	1.6 .. 5.5 V
JTAG Debugger License for APS Add.	JTAG-APS-A	LA-3778A	1.6 .. 5.5 V
JTAG Debugger for AVR32 (ICD)	DEBUG-AVR32	LA-3779	1.6 .. 5.5 V
JTAG Debugger for APS 20 (ICD)	JTAG-APS-20	LA-3785	1.6 .. 5.5 V
Debugger for RX Family	JTAG-RX	LA-3786	3.0 .. 3.6 V
JTAG Debugger for M32R SDI-3 (ICD)	DEBUG-M32R	LA-7661	0.4 .. 5.2 V
BDM Debugger for 68K (ICD)	BDM-68K	LA-7710	3.0 .. 5.5 V
BDM Debugger for 68HC16 (ICD)	BDM-HC16	LA-7712	4.5 .. 5.5 V
BDM Debugger for 68HC12 (ICD)	BDM-HC12	LA-7714	2.7 .. 5.5 V
BDM Debugger for MCS12 (ICD)	BDM-MCS12	LA-7717	2.7 .. 5.5 V
JTAG Debugger for MPC74xx (ICD)	DEBUG-PPC74XX	LA-7719	1.6 .. 5.5 V
JTAG Debugger Extension for MPC74xx (ICD)	DEBUG-PPC74XX-X	LA-7719X	1.6 .. 5.5 V
JTAG Debugger for PPC603/ MPC74x/75x (ICD)	DEBUG-PPC603	LA-7721	1.6 .. 5.5 V
JTAG Debugger Extension for PPC603(ICD)	DEBUG-PPC603-X	LA-7721X	1.6 .. 5.5 V
BDM Debugger for MPC500/800 (ICD)	BDM-MPC500/800	LA-7722	2.5 .. 5.0 V
JTAG Debugger for PPC400 (ICD)	DEBUG-PPC400	LA-7723	1.6 .. 5.5 V
JTAG Debugger License for PPC400 Add.	DEBUG-PPC400-A	LA-7723A	1.6 .. 5.5 V
JTAG Debugger Extension for PPC400 (ICD)	DEBUG-PPC400-X	LA-7723X	1.6 .. 5.5 V
JTAG Debugger for MPC82xx/ MPC83xx(ICD)	DEBUG-MPC8260	LA-7729	1.6 .. 5.5 V
JTAG Debugger Extension for MPC8260/MPC8240	DEBUG-MPC8260-X	LA-7729X	1.6 .. 5.5 V
BDM Debugger for DSP56K (ICD)	BDM-DSP56K	LA-7730	4.5 .. 5.5 V
BDM Debugger for ColdFire (ICD)	BDM-COLDFIRE	LA-7732	3.0 .. 5.5 V
BDM Debugger for MCS08 (ICD)	BDM-MCS08	LA-7733	1.8 .. 5.5 V
JTAG Debugger for MPC5200/ MPC512x (ICD)	JTAG-MPC5200	LA-7734	1.6 .. 5.5 V
JTAG Debugger Extension for MPC5200/MPC512x	JTAG-MPC5200-X	LA-7734X	1.6 .. 5.5 V
BDM Debugger for DSP56300 (ICD)	BDM-DSP56300	LA-7735	4.5 .. 5.5 V
BDM Debugger for MCS12X (ICD)	BDM-MCS12X	LA-7736	2.7 .. 5.5 V
BDM Debugger for DSP56800 and DSP56800E (ICD)	BDM-DSP56800	LA-7738	4.5 .. 5.5 V
JTAG Debugger for JANUS (ICD)	JTAG-JANUS	LA-7739	1.8 .. 3.6 V
JTAG Debugger for ARM9 (ICD)	JTAG-ARM9	LA-7742	0.4 .. 5.2 V
JTAG Debugger License for ARM9 Add.	JTAG-ARM9-A	LA-7742A	0.4 .. 5.2 V
JTAG Debugger Extension for ARM9	JTAG-ARM9-X	LA-7742X	0.4 .. 5.2 V
JTAG Debugger for ARM10 (ICD)	JTAG-ARM10	LA-7744	0.4 .. 5.2 V

Adapter	Code	OrderNo	Voltage Range
JTAG Debugger License for ARM10 Add.	JTAG-ARM10-A	LA-7744A	0.4 .. 5.2 V
JTAG Debugger Extension for ARM10	JTAG-ARM10-X	LA-7744X	0.4 .. 5.2 V
ONCE Debugger for M-CORE (ICD)	ONCE-MCORE	LA-7745	2.5 .. 5.5 V
JTAG Debugger for ARM7 20 Pin Connector (ICD)	JTAG-ARM7-20	LA-7746	0.4 .. 5.2 V
JTAG Debugger License for ARM7 Add.	JTAG-ARM7-A	LA-7746A	0.4 .. 5.2 V
JTAG Debugger Extension for ARM7	JTAG-ARM7-X	LA-7746X	0.4 .. 5.2 V
Debugger for 196EA (ICD)	DEBUG-196EA	LA-7750	4.5 .. 5.5 V
JTAG Debugger for PPC44x (ICD)	DEBUG-PPC44X	LA-7752	1.6 .. 5.5 V
JTAG Debugger License for PPC44x Add.	DEBUG-PPC44X-A	LA-7752A	1.6 .. 5.5 V
JTAG Debugger Extension for PPC44x (ICD)	DEBUG-PPC44X-X	LA-7752X	1.6 .. 5.5 V
JTAG Debugger for MPC55xx/ MPC56xx (ICD)	DEBUG-MPC5500	LA-7753	1.6 .. 5.5 V
OCDS Debugger for C166CBC (ICD)	OCDS-C166CBC	LA-7755	2.5 .. 5.2 V
OCDS Debugger for TriCore (ICD)	OCDS-TRICORE	LA-7756	2.5 .. 5.2 V
Debugger for SH2/SH3/SH4 H-UDI-14 Pin (ICD)	JTAG-SH4-14	LA-7758	3.0 .. 3.6 V
OCDS Debugger for XC2000/ C166S V2 (ICD)	OCDS-C166S-V2	LA-7759	2.5 .. 5.2 V
OCDS Debugger for XC2000/ C166S V2 Additional	OCDS-C166S-V2-A	LA-7759A	2.5 .. 5.2 V
JTAG Debugger for MIPS32 (ICD)	EJTAG-MIPS32	LA-7760	1.8 .. 3.6 V
EJTAG Debugger License for MIPS32 Add.	EJTAG-MIPS32-A	LA-7760A	1.8 .. 3.6 V
JTAG Debugger for MIPS64 (ICD)	EJTAG-MIPS64	LA-7761	1.8 .. 3.6 V
EJTAG Debugger License for MIPS64 Add.	EJTAG-MIPS64-A	LA-7761A	1.8 .. 3.6 V
JTAG Debugger for XSCALE (ICD)	JTAG-XSCALE	LA-7762	0.4 .. 5.2 V
JTAG Debugger Extension for XSCALE (ICD)	JTAG-XSCALE-X	LA-7762X	0.4 .. 5.2 V
JTAG Debugger for Super10 (ICD)	JTAG-SUPER10	LA-7763	2.5 .. 5.0 V
JTAG Debugger for MPC85XX/ QorIQ (ICD)	DEBUG-MPC8560	LA-7764	1.6 .. 5.5 V
JTAG Debugger Extension for MPC85XX/QorIQ	DEBUG-MPC8560-X	LA-7764X	1.6 .. 5.5 V
JTAG Debugger for ARM11 (ICD)	JTAG-ARM11	LA-7765	0.4 .. 5.2 V
JTAG Debugger License for ARM11 Add.	JTAG-ARM11-A	LA-7765A	0.4 .. 5.2 V
JTAG Debugger Extension for ARM11	JTAG-ARM11-X	LA-7765X	0.4 .. 5.2 V

Adapter	Code	OrderNo	Voltage Range
JTAG Debugger for H8S (ICD)	JTAG-H8S	LA-7766	3.0 .. 5.2 V
JTAG Debugger for Teak/TeakLite JAM 20 (ICD)	JTAG-TEAK-JAM-20	LA-7774	0.4 .. 5.2 V
JTAG Debug. for Teak/TeakLite JAM 20 Add.	JTAG-TEAK-JAM-20-A	LA-7774A	0.4 .. 5.2 V
JTAG Debugger Extension for TEAK-JAM	JTAG-TEAK-JAM-X	LA-7774X	0.4 .. 5.2 V
JTAG Debugger for OAK/TeakLite SEIB (ICD)	JTAG-OAK-SEIB	LA-7789	1.8 .. 3.6 V
JTAG Debugger for TeakLite/OAK SEIB (ICD)	JTAG-OAK-SEIB-A	LA-7789A	1.8 .. 3.6 V
JTAG Debugger Extension for TeakLite/OAK SEIB	JTAG-OAK-SEIB-X	LA-7789X	1.8 .. 3.6 V
JTAG Debugger for SH2/SH3/SH4 20 Pin (ICD)	JTAG-SH4-20	LA-7817	3.0 .. 3.6 V
JTAG Debugger License for SH2/SH3/SH4 Add.	JTAG-SH4-A-20	LA-7817A	3.0 .. 3.6 V
JTAG Debugger for TMS320C55X (ICD)	JTAG-C55X	LA-7830	1.8 .. 3.6 V
JTAG Debugger License for TMS320C55x Add.	JTAG-C55X-A	LA-7830A	1.8 .. 3.6 V
JTAG Debugger Extension for TMSC55X	JTAG-C55X-X	LA-7830X	1.8 .. 3.6 V
JTAG Debugger for TMS320C54X (ICD)	JTAG-C54X	LA-7831	1.8 .. 3.6 V
JTAG Debugger License for TMS320C54X Add.	JTAG-C54X-A	LA-7831A	1.8 .. 3.6 V
JTAG Debugger Extension for TMSC54X	JTAG-C54X-X	LA-7831X	1.8 .. 3.6 V
JTAG Debugger for ZSP400 DSP Core	JTAG-ZSP400	LA-7832	1.8 .. 3.6 V
JTAG Debugger for ZSP400 DSP Core Additional	JTAG-ZSP400-A	LA-7832A	1.8 .. 3.6 V
JTAG Debugger for BLACKFIN (ICD)	JTAG-BLACKFIN	LA-7833	0.4 .. 5.2 V
JTAG Debugger for StarCore 14 Pin (ICD)	JTAG-STARCORE-14	LA-7834	1.8 .. 3.6 V
N-Wire Debugger for V850 (ICD)	JTAG-V850	LA-7835	0.4 .. 5.2 V
JTAG Debugger for MMDSP (ICD)	JTAG-MMDSP	LA-7836	1.8 .. 3.6 V
JTAG Debugger License for MMDSP	JTAG-MMDSP-A	LA-7836A	1.8 .. 3.6 V
Debugger for NIOS-II (ICD)	JTAG-NIOS-II	LA-7837	1.8 .. 3.6 V
JTAG Debugger for TMS320C6x00 (ICD)	JTAG-C6X00	LA-7838	1.8 .. 3.6 V
JTAG Debugger License for TMS320C6400 Add.	JTAG-C6X00-A	LA-7838A	1.8 .. 3.6 V
N-Wire Debugger for NEC VR-Series (ICD)	JTAG-VR	LA-7842	0.4 .. 5.2 V
JTAG Debugger for CORTEX-A/R (ICD)	JTAG-CORTEX-A/R	LA-7843	0.4 .. 5.2 V
JTAG Debugger License for CORTEX-A/R Add.	JTAG-CORTEX-A/R-A	LA-7843A	0.4 .. 5.2 V

Adapter	Code	OrderNo	Voltage Range
JTAG Debugger Extension for CORTEX-A/R	JTAG-CORTEX-A/R-X	LA-7843X	0.4 .. 5.2 V
JTAG Debugger for CORTEX-M (ICD)	JTAG-CORTEX_M	LA-7844	0.4 .. 5.2 V
JTAG Debugger License for CORTEX-M Add.	JTAG-CORTEX_M-A	LA-7844A	0.4 .. 5.2 V
JTAG Debugger Extension for CORTEX-M	JTAG-CORTEX_M-X	LA-7844X	0.4 .. 5.2 V
JTAG Debugger for StarCore 20 Pin (ICD)	JTAG-STARCORE-20	LA-7845	1.8 .. 3.6 V
JTAG Debugger License for StarCore 20 Pin Add	JTAG-STARCORE-20-A	LA-7845A	1.8 .. 3.6 V
JTAG Debugger for TMS320C28X (ICD)	JTAG-TMS320C28X	LA-7847	1.8 .. 3.6 V
JTAG Debugger License for TMS320C28X Add.	JTAG-TMS320C28X-A	LA-7847A	1.8 .. 3.6 V

Order Information

Module Description

OrderNo Code	Text
LA-7708 DEBUG-USB2	Power Debug Module USB 2.0 Universal BDM debug and JTAG controller, 200 MHz PowerPC, 64 MByte DRAM, High-Speed FPGA, USB-2 (Win98/2000/XP/Linux), PODBUS Interface (enables to add Parallel and ETHERNET Interface), compatible with all BDM and JTAG debuggers
LA-7705 DEBUG-ETH	Power Debug Module Ethernet Universal BDM debug and JTAG controller, 200 MHz PowerPC, 64 MB DRAM, High-Speed FPGA USB 2.0 (Win98/2000/XP/Linux) included Ethernet for PC LAN/LINUX included Ethernet for Workstation requires Host Driver Package for Workstations on CD (LA-8616) can be upgraded to PowerTrace by LA-7709 (256MByte) or by LA-7691 (512MByte)
LA-7699 POWER- DEBUG-II-ETH	Power Debug II Ethernet Universal debug controller controller, 10/100 MB, 1 GB Ethernet and USB 2.0 (Win98/2000/XP/Linux) For workstations the ethernet interface requires the driver license (LA-8616)
LA-7701 DEBUG-EXT	Debug Module Universal BDM debug and JTAG controller, High-Speed FPGA, Connector to Debug Cable, compatible with most BDM and JTAG debuggers
LA-7809 PODPAR-3	PODBUS Interface for Printer Port Vers. 3 support up to 4 PODBUS devices
LA-7806 PODBUS-CX	Extension Cable for PODBUS 0.5 m
LA-7843 JTAG-CORTEX-A/R	JTAG Debugger for CORTEX-A/R (ICD) supports ARM CORTEX-A and Cortex-R (0.4 V - 5 V) Whisker version of the debug cable supports 5-pin standard JTAG, cJTAG and Serial Wire Debug Port includes software for WINDOWS, HLL debugger, operation system, cable requires Power Debug Module; cJTAG and Serial Wire Debug require Power Debug Interface USB 2.0, Power Debug Ethernet, PowerTrace or Power Debug II

OrderNo Code	Text
LA-7844 JTAG-CORTEX_M	JTAG Debugger for CORTEX-M (ICD) supports ARM CORTEX-M (0.4 V - 5 V) Whisker version of the debug cable supports 5-pin standard JTAG, cJTAG and Serial Wire Debug Port includes software for WINDOWS, HLL debugger, operation system, cable requires Power Debug Module; cJTAG and Serial Wire Debug require Power Debug Interface USB 2.0, Power Debug Ethernet, PowerTrace or Power Debug II
LA-7765 JTAG-ARM11	JTAG Debugger for ARM11 (ICD) supports ARM11 (0.4 V - 5 V) Whisker version of the debug cable supports 5-pin standard JTAG, cJTAG and Serial Wire Debug Port includes software for WINDOWS and Linux, HLL debugger, operation system requires Power Debug Module; cJTAG and Serial Wire Debug require Power Debug Interface USB 2.0, Power Debug Ethernet, PowerTrace or Power Debug II
LA-7744 JTAG-ARM10	JTAG Debugger for ARM10 (ICD) supports ARM10 (0.4 V - 5 V) Whisker version of the debug cable supports 5-pin standard JTAG, cJTAG and Serial Wire Debug Port includes software for WINDOWS and Linux, HLL debugger, operation system requires Power Debug Module; cJTAG and Serial Wire Debug require Power Debug Interface USB 2.0, Power Debug Ethernet, PowerTrace or Power Debug II
LA-7742 JTAG-ARM9	JTAG Debugger for ARM9 (ICD) supports ARM9 (0.4 V - 5 V), Whisker version of the debug cable supports 5-pin standard JTAG, cJTAG and Serial Wire Debug Port includes software for WINDOWS and Linux, HLL debugger, operation system requires Power Debug Module; cJTAG and Serial Wire Debug require Power Debug Interface USB 2.0, Power Debug Ethernet, PowerTrace or Power Debug II
LA-7746 JTAG-ARM7-20	JTAG Debugger for ARM7 20 Pin Connector (ICD) supports ARM7 (0.4 V - 5 V) Whisker version of the debug cable supports 5-pin standard JTAG, cJTAG and Serial Wire Debug Port includes software for WINDOWS and Linux, HLL debugger, operation system requires Power Debug Module; cJTAG and Serial Wire Debug require Power Debug Interface USB 2.0, Power Debug Ethernet, PowerTrace or Power Debug II
LA-7739 JTAG-JANUS	JTAG Debugger for JANUS (ICD) supports JANUS 2 includes software for WINDOWS, HLL debugger, operation system, cable, requires PODBUS-interface to host and Power Debug Module debug cable with 20 pin connector
LA-7762 JTAG-XSCALE	JTAG Debugger for XSCALE (ICD) supports Intel XSCALE derivatives, requires Power Debug Module debug cable with 20 pin connector

OrderNo Code	Text
LA-7722 BDM-MPC500/ 800	BDM Debugger for MPC500/800 (ICD) supports PowerPC MPC505, MPC555, MPC56X MPC801, MPC821, MPC85x, MPC86x, MPC87x and MPC88x includes HLL debugger, operation system, cable includes driver for Windows and Linux requires Debug Module (Processor BDM input signals have to be 3.3V tolerant)
LA-7753 DEBUG- MPC5500	JTAG Debugger for MPC55xx/MPC56xx (ICD) supports PowerPC MPC55xx and eTPU (whisker version of the debug cable) includes HLL debugger, operation system, cable includes driver for Windows and Linux requires PODBus-interface to host and PowerDebug Module Concurrent debugging of both cores in dual-core chip requires a License for Multicore Debugging (LA-7960X) (not necessary for lockstep mode) debug cable with 14 pin connector
LA-7734 JTAG-MPC5200	JTAG Debugger for MPC5200/MPC512x (ICD) supports (1.8V - 5.0V) MGT5100, MPC512x, MPC5200 (whisker version of the debug cable) includes HLL debugger, operation system, cable includes driver for Windows requires PODBus-interface to host and PowerDebug Module debug cable with 16 pin connector
LA-7721 DEBUG- PPC603	JTAG Debugger for PPC603/MPC74x/75x (ICD) supports (1.8V - 5.0V) PPC603, MPC74x and MPC75x includes HLL debugger, operation system, cable includes driver for WindowsNT Windows95/98, Windows2000, Windows-XP requires PODBus-interface to host and Power Debug Module (not LA-7701) debug cable with 16 pin connector
LA-7719 DEBUG- PPC74XX	JTAG Debugger for MPC74xx (ICD) supports (1.8V - 5.0V) MPC7410 includes HLL debugger, operation system, cable includes driver for Windows requires PODBus-interface to host and Power Debug Module (not LA-7701) debug cable with 16 pin connector
LA-7764 DEBUG- MPC8560	JTAG Debugger for MPC85XX/QorIQ (ICD) supports PowerQuicIII (MPC85XX) and QorIQ (whisker version of the debug cable) includes HLL debugger, operation system, cable includes driver for WINDOWS requires Power Debug Module Concurrent debugging of two or more cores in multicore chip requires a License for Multicore Debugging (LA-7960X) debug cable with 16 pin connector

OrderNo Code	Text
LA-3735 DEBUG- MPC86XX	JTAG Debugger for MPC86xx (ICD) supports (1.8V - 5.0V) MPC8641, MPC8641D and MPC8610 (whisker version of the debug cable) includes HLL debugger, operation system, cable includes driver for Windows NT, Windows 9x, Windows2000, Windows-XP requires Power Debug Module Concurrent debugging of both cores in dual-core chip requires a License for Multicore Debugging (LA-7960X) debug cable with 16 pin connector
LA-3754 DEBUG- PWRFICIENT	JTAG Debugger for PWRficient (ICD) supports PA6T-1682M supports (1.8V - 5.0V) whisker version of the debug cable includes HLL debugger, operation system, cable requires Power Debug Module Concurrent debugging of both cores in dual-core chip requires a License for Multicore Debugging (LA-7960X) debug cable with 16 pin connector
LA-7752 DEBUG- PPC44X	JTAG Debugger for PPC44x (ICD) supports (1.8V - 5.0V) PPC440 (whisker version of the debug cable) includes HLL debugger, operation system, cable includes driver for Windows requires PODBus-interface to host and Power Debug Module requires LA-7984 if the target has a Mictor38 connector debug cable with 16 pin connector
LA-7723 DEBUG- PPC400	JTAG Debugger for PPC400 (ICD) supports (1.8V - 5.0V) PPC40x (whisker version of the debug cable) includes HLL debugger, operation system, cable includes driver for Windows requires PODBus-interface to host and universal Debug Module or Power Debug Module debug cable with 16 pin connector requires LA-7984 if the target has a Mictor38 connector
LA-7760 EJTAG-MIPS32	JTAG Debugger for MIPS32 (ICD) supports MIPS32 4Kp, 4Km, 4Kc derivatives and LEXRA LX4280 requires Power Debug Module debug cable with 14 pin connector
LA-7761 EJTAG-MIPS64	JTAG Debugger for MIPS64 (ICD) supports MIPS64 5Kc, 20Kc derivatives requires Power Debug Module debug cable with 14 pin connector

OrderNo Code	Text
LA-3776 DEBUG-ATOM	JTAG Debugger for Intel® Atom™ (ICD) Supports Intel® Atom™ cores (32-bit). Multithreading support included. Includes HLL debugger, Operating System support, cable. Includes driver for Windows and Linux. Requires PowerDebug Module. Debug cable with 60 pin XDP connector
LA-7750 DEBUG-196EA	Debugger for 196EA (ICD) supports 196EA includes software for WINDOWS, HLL debugger, operation system, cable
LA-3777 DEBUG-78K0R	Debugger for 78K0R (ICD) supports 78K0R cores (16-bit) includes HLL debugger, operation system, cable includes driver for Windows and Linux requires PowerDebug Module debug cable with 16 pin connector
LA-3756 JTAG-ANDES	JTAG Debugger for AndesCore (ICD) supports AndesCore (0.4 V - 5 V), Whisker version of the debug cable includes software for WINDOWS and Linux, HLL debugger, operation system requires Power Debug Module
LA-3785 JTAG-APS-20	JTAG Debugger for APS 20 (ICD) supports APS3 cores (32-bit) includes HLL debugger, operation system, cable includes driver for Windows and Linux requires PowerDebug Module debug cable with 20 pin connector
LA-3778 JTAG-APS-60	JTAG Debugger for APS 60 (ICD) supports APS3 cores (32-bit) includes HLL debugger, operation system, cable includes driver for Windows and Linux requires PowerDebug Module debug cable with 60 pin connector
LA-3779 DEBUG-AVR32	JTAG Debugger for AVR32 (ICD) supports AVR32 cores (32-bit) includes HLL debugger, operation system, cable includes driver for Windows and Linux requires PowerDebug Module debug cable with 10 pin connector
LA-7755 OCDS- C166CBC	OCDS Debugger for C166CBC (ICD) supports E-GOLD, E-GOLD+, DOLCE, UTAH, M2, X-GOLD101 includes software for WINDOWS, HLL debugger, operation system, cable, requires PODBUS-Interface to host and Power Debug Module debug cable with 16 pin connector
LA-7710 BDM-68K	BDM Debugger for 68K (ICD) supports MC68330..341, 68349, 68360, includes HLL debugger, operation system, cable includes driver for Windows 95/98, Windows2000, Windows-XP, Vista requires PODBUS-interface to host and universal Debug Module

OrderNo Code	Text
LA-7732 BDM- COLDFIRE	BDM Debugger for ColdFire (ICD) supports FREESCALE ColdFire Family (whisker version of the debug cable) includes software for Windows, HLL debugger, operation system, cable requires PODBUS-interface to host and Power Debug Module
LA-3745 JTAG-H8SX	JTAG Debugger for H8SX (ICD) supports CPU H8SX/1664 from Renesas Requires Power Debug Module debug cable with 14 pin connector
LA-7712 BDM-HC16	BDM Debugger for 68HC16 (ICD) supports MC68HC16 all derivatives includes HLL debugger, operation system, cable includes driver for Windows 95/98, Windows2000, Windows-XP, Vista requires PODBUS-interface to host and universal Debug Module
LA-7661 DEBUG-M32R	JTAG Debugger for M32R SDI-3 (ICD) Adapter for Debug on M32R SDI-3 includes debug software TRACE32-PowerView requires a Power Debug Module Adapter Half-Size 10 pin for M32R (LA-7662) available
LA-7745 ONCE-MCORE	ONCE Debugger for M-CORE (ICD) supports M-CORE derivatives, (whisker version of the debug cable) includes software for WINDOWS, HLL debugger, operation system, cable, requires Power Debug Module debug cable with 14 pin connector
LA-7733 BDM-MCS08	BDM Debugger for MCS08 (ICD) supports MCS08 includes HLL debugger, operation system, cable includes driver for Windows requires Power Debug Ethernet/USB2 or PowerTrace
LA-7736 BDM-MCS12X	BDM Debugger for MCS12X (ICD) supports MCS12X and MCS12, includes HLL debugger, operation system, cable includes driver for Windows Power Debug Module is required
LA-7850 JTAG-R8051XC	JTAG Debugger for R8051XC supports R8051XC core includes software for WINDOWS, HLL debugger, operation system, cable, Power Debug Module, debug cable with 20 pin connector
LA-3786 JTAG-RX	Debugger for RX Family supports RX600, RX610 derivatives from Renesas requires Power Debug Module debug cable with 14 pin connector

OrderNo Code	Text
LA-7758 JTAG-SH4-14	Debugger for SH2/SH3/SH4 H-UDI-14 Pin (ICD) supports a lot of SH2, SH3 and SH4 derivatives from Renesas requires Power Debug Module debug cable with 14 pin connector Targets with 36 pin Hirose connector require the converter LA-7980
LA-7817 JTAG-SH4-20	JTAG Debugger for SH2/SH3/SH4 20 Pin (ICD) supports a lot of SH2, SH3 and SH4 derivatives from Renesas (0.4 - 5V) for ARM JTAG interface ASEBRK pin in only supported in conjunction with LA-7818 Converter JTAG 20 to H-UDI 14, LA-7822 Converter JTAG 20 to Hirose 36 or LA-7823 Converter JTAG 20 to Mictor 38 requires Power Debug Module debug cable with 20 pin connector
LA-3710 JTAG-ST40	JTAG Debugger for ST40 (ICD) supports ST40 from ST Microelectronics with 20 pin JTAG connector requires Power Debug Module
LA-7756 OCDS-TRICORE	OCDS Debugger for TriCore (ICD) supports TriCore derivatives, includes software for WINDOWS and LINUX debugger for PCP1 and PCP2 supports 16-pin standard JTAG 10-pin DAP interface requires LA-3815 and Whisker version of the debug cable requires Power Debug Module
LA-7835 JTAG-V850	N-Wire Debugger for V850 (ICD) supports NEC V850 with N-Wire requires Power Debug Module debug cable with 20 pin connector requires LA-7936 if KEL connector is used on the target requires LA-7937 if Mictor connector is used on the target
LA-7842 JTAG-VR	N-Wire Debugger for NEC VR-Series (ICD) supports NEC VR-Series with N-Wire requires Power Debug Module debug cable with 20 pin connector requires LA-7936 if KEL connector is used on the target requires LA-7937 if Mictor connector is used on the target
LA-7759 OCDS-C166S-V2	OCDS Debugger for XC2000/C166S V2 (ICD) supports C166S V2, XC16x, XE166, XC2000, X-GOLD102 includes software for WINDOWS and LINUX supports 16-pin standard JTAG 10-pin DAP interface requires LA-3815 requires PODBUS-interface to host and Power Debug Module
LA-3732 OCDS-XC800	OCDS Debugger for XC800 (ICD) supports XC800 includes software for WINDOWS, HLL debugger, operation system, cable requires Power Debug Module debug cable with 16 pin connector

OrderNo Code	Text
LA-7847 JTAG- TMS320C28X	JTAG Debugger for TMS320C28X (ICD) supports TMS320C28XX (1.8V - 3.6V) includes software for WINDOWS, HLL debugger, operation system, cable, requires PODBUS-interface to host and Debug Module Debug cable with 20 pin connector Requires LA-7748 if 14 pin TI target adapter is used
LA-7831 JTAG-C54X	JTAG Debugger for TMS320C54X (ICD) supports TMS320C54XX (1.8V - 3.6V) includes software for WINDOWS, HLL debugger, operation system, cable, requires PODBUS-interface to host and Debug Module Debug cable with 20 pin connector Requires LA-7748 if 14 pin TI target adapter is used
LA-7830 JTAG-C55X	JTAG Debugger for TMS320C55X (ICD) supports TMS320C55x (1.8V - 3.6V) includes software for WINDOWS, HLL debugger, operation system, cable, requires PODBUS-interface to host and Debug Module Debug cable with 20 pin connector Requires LA-7748 if 14 pin TI target adapter is used
LA-7838 JTAG-C6400	JTAG Debugger for TMS320C6400 (ICD) supports TMS320C64xx (0.4 V - 5 V) includes software for WINDOWS, HLL debugger, operation system, debug cable, requires Power Debug Module Debug cable with 20 pin connector Requires LA-7748 if 14 pin TI target adapter is used
LA-7833 JTAG- BLACKFIN	JTAG Debugger for BLACKFIN (ICD) supports Blackfin Core debug cable with 14 pin connector requires Power Debug Module
LA-3711 JTAG-CEVAX	JTAG Debugger for CEVA-X (ICD) supports CEVA-X requires Power Debug Module debug cable with 20 pin connector
LA-7738 BDM- DSP56800	BDM Debugger for DSP56800 and DSP56800E (ICD) supports DSP568xx and DSP5683xx includes software for WINDOWS, HLL debugger, operation system, cable requires PODBUS-interface to host and universal Power Debug Module debug cable with 14 pin connector
LA-7836 JTAG-MMDSP	JTAG Debugger for MMDSP (ICD) supports MMDSP includes software for WINDOWS, HLL debugger, operation system, cable, requires PODBUS-interface to host and Debug Module LA-3722 Conv. 20 Pin JTAG to Mictor 38 included
LA-7774 JTAG-TEAK- JAM-20	JTAG Debugger for Teak/TeakLite JAM 20 (ICD) supports OAK, Teak and Teaklite with JAM interface, includes software for WINDOWS, HLL debugger, operation system, cable, requires PODBUS-Interface to host and Power Debug Module debug cable with 20 pin connector

OrderNo Code	Text
LA-7789 JTAG-OAK-SEIB	JTAG Debugger for OAK/TeakLite SEIB (ICD) supports S-GOLD, S-GOLDlite, E-GOLDlite, X-GOLD includes software for WINDOWS, HLL debugger, operation system, cable, requires PODBUS-Interface to host and Power Debug Module debug cable with 20 pin connector
LA-3774 JTAG-TEAKLITE-III	JTAG Debugger for TeakLite III (ICD) supports Teaklite III interface, includes software for WINDOWS, HLL debugger, operation system, cable, requires PODBUS-Interface to host and Power Debug Module debug cable with 20 pin connector
LA-7834 JTAG-STARCORE-14	JTAG Debugger for StarCore 14 Pin (ICD) supports StarCore DSP debug cable with 14 pin connector requires LA-3724 (Adapter for StarCore Boards with Ejector) if target has a JTAG connector with ejector
LA-7845 JTAG-STARCORE-20	JTAG Debugger for StarCore 20 Pin (ICD) supports StarCore DSP for ARM JTAG interface debug cable with 20 pin connector
LA-7832 JTAG-ZSP400	JTAG Debugger for ZSP400 DSP Core supports ZSP400 Core (LSI)
LA-3712 JTAG-ZSP500	JTAG Debugger for ZSP500 DSP Core (ICD) supports ZSP500 Core (LSI)
LA-3730 JTAG-MICROBLAZE	Debugger for MicroBlaze (ICD) supports MicroBlaze includes software for WINDOWS, HLL debugger, operation system, cable requires Power Debug Module converter from 16 pins to Xilinx PPC400/MicroBlaze 14 pins target connector included
LA-7837 JTAG-NIOS-II	Debugger for NIOS-II (ICD) supports NIOS-II includes software for WINDOWS and Linux, HLL debugger, operation system, cable, requires Power Debug Module

OrderNo Code	Text
LA-3750 JTAG-ARC	JTAG Debugger for ARC (ICD) supports ARC 700, ARC 600, ARCTangent-A5 and ARCTangent-A4 requires Power Debug Module debug cable with 20 pin connector
LA-3752 JTAG-ARC-XDP	JTAG Debugger for ARC XDP 60 (ICD) supports ARC 700, ARC 600, ARCTangent-A5 and ARCTangent-A4 requires Power Debug Module Debug cable with 60 pin XDP connector
LA-7848 JTAG- M8051EW-14	JTAG Debugger for M8051EW 14 Pins (ICD) supports M8051EW core includes software for WINDOWS, HLL debugger, operation system, cable, requires PODBUS-interface to host and Debug Module, Multi core debugging is only possible on the Power Debug Module debug cable with 14 pin connector
LA-7849 JTAG- M8051EW-16	JTAG Debugger for M8051EW 16 Pins (ICD) supports M8051EW core includes software for WINDOWS, HLL debugger, operation system, cable, requires PODBUS-interface to host and Debug Module, Multi core debugging is only possible on the Power Debug Module, HITEX compatible debug cable with 16 pin connector
LA-3760 JTAG-XTENSA	JTAG Debugger for Xtensa supports Xtensa Cores from Tensilica includes software for WINDOWS, HLL debugger, operation system, cable, requires Power Debug Module debug cable with 14 pin connector

Detailed Order Information

Order No.	Code	Text
LA-7708	DEBUG-USB2	Power Debug Module USB 2.0
LA-7705	DEBUG-ETH	Power Debug Module Ethernet
LA-7699	POWER-DEBUG-II-ETH	Power Debug II Ethernet
LA-7701	DEBUG-EXT	Debug Module
LA-7809	PODPAR-3	PODBUS Interface for Printer Port Vers. 3
LA-7806	PODBUS-CX	Extension Cable for PODBUS 0.5 m
LA-7843	JTAG-CORTEX-A/R	JTAG Debugger for CORTEX-A/R (ICD)

Order No.	Code	Text
LA-7844	JTAG-CORTEX_M	JTAG Debugger for CORTEX-M (ICD)
LA-7765	JTAG-ARM11	JTAG Debugger for ARM11 (ICD)
LA-7744	JTAG-ARM10	JTAG Debugger for ARM10 (ICD)
LA-7742	JTAG-ARM9	JTAG Debugger for ARM9 (ICD)
LA-7746	JTAG-ARM7-20	JTAG Debugger for ARM7 20 Pin Connector (ICD)
LA-7739	JTAG-JANUS	JTAG Debugger for JANUS (ICD)
LA-7762	JTAG-XSCALE	JTAG Debugger for XSCALE (ICD)
LA-7722	BDM-MPC500/800	BDM Debugger for MPC500/800 (ICD)
LA-7753	DEBUG-MPC500	JTAG Debugger for MPC55xx/MPC56xx (ICD)
LA-7734	JTAG-MPC5200	JTAG Debugger for MPC5200/MPC512x (ICD)
LA-7721	DEBUG-PPC603	JTAG Debugger for PPC603/MPC74x/75x (ICD)
LA-7719	DEBUG-PPC74XX	JTAG Debugger for MPC74xx (ICD)
LA-7764	DEBUG-MPC8560	JTAG Debugger for MPC85XX/QorIQ (ICD)
LA-3735	DEBUG-MPC86XX	JTAG Debugger for MPC86xx (ICD)
LA-3754	DEBUG-PWRFICIENT	JTAG Debugger for PWRficient (ICD)
LA-7752	DEBUG-PPC44X	JTAG Debugger for PPC44x (ICD)
LA-7723	DEBUG-PPC400	JTAG Debugger for PPC400 (ICD)
LA-7760	EJTAG-MIPS32	JTAG Debugger for MIPS32 (ICD)
LA-7761	EJTAG-MIPS64	JTAG Debugger for MIPS64 (ICD)
LA-3776	DEBUG-ATOM	JTAG Debugger for Intel® Atom™ (ICD)
LA-7750	DEBUG-196EA	Debugger for 196EA (ICD)
LA-3777	DEBUG-78K0R	Debugger for 78K0R (ICD)
LA-3756	JTAG-ANDES	JTAG Debugger for AndesCore (ICD)
LA-3785	JTAG-APS-20	JTAG Debugger for APS 20 (ICD)
LA-3778	JTAG-APS-60	JTAG Debugger for APS 60 (ICD)
LA-3779	DEBUG-AVR32	JTAG Debugger for AVR32 (ICD)
LA-7755	OCDS-C166CBC	OCDS Debugger for C166CBC (ICD)
LA-7710	BDM-68K	BDM Debugger for 68K (ICD)
LA-7732	BDM-COLDFIRE	BDM Debugger for ColdFire (ICD)
LA-3745	JTAG-H8SX	JTAG Debugger for H8SX (ICD)
LA-7712	BDM-HC16	BDM Debugger for 68HC16 (ICD)
LA-7661	DEBUG-M32R	JTAG Debugger for M32R SDI-3 (ICD)
LA-7745	ONCE-MCORE	ONCE Debugger for M-CORE (ICD)
LA-7733	BDM-MCS08	BDM Debugger for MCS08 (ICD)
LA-7736	BDM-MCS12X	BDM Debugger for MCS12X (ICD)
LA-7850	JTAG-R8051XC	JTAG Debugger for R8051XC
LA-3786	JTAG-RX	Debugger for RX Family

Order No.	Code	Text
LA-7758	JTAG-SH4-14	Debugger for SH2/SH3/SH4 H-UDI-14 Pin (ICD)
LA-7817	JTAG-SH4-20	JTAG Debugger for SH2/SH3/SH4 20 Pin (ICD)
LA-3710	JTAG-ST40	JTAG Debugger for ST40 (ICD)
LA-7756	OCDS-TRICORE	OCDS Debugger for TriCore (ICD)
LA-7835	JTAG-V850	N-Wire Debugger for V850 (ICD)
LA-7842	JTAG-VR	N-Wire Debugger for NEC VR-Series (ICD)
LA-7759	OCDS-C166S-V2	OCDS Debugger for XC2000/C166S V2 (ICD)
LA-3732	OCDS-XC800	OCDS Debugger for XC800 (ICD)
LA-7847	JTAG-TMS320C28X	JTAG Debugger for TMS320C28X (ICD)
LA-7831	JTAG-C54X	JTAG Debugger for TMS320C54X (ICD)
LA-7830	JTAG-C55X	JTAG Debugger for TMS320C55X (ICD)
LA-7838	JTAG-C6400	JTAG Debugger for TMS320C6400 (ICD)
LA-7833	JTAG-BLACKFIN	JTAG Debugger for BLACKFIN (ICD)
LA-3711	JTAG-CEVAX	JTAG Debugger for CEVA-X (ICD)
LA-7738	BDM-DSP56800	BDM Debugger for DSP56800 and DSP56800E (ICD)
LA-7836	JTAG-MMDSP	JTAG Debugger for MMDSP (ICD)
LA-7774	JTAG-TEAK-JAM-20	JTAG Debugger for Teak/TeakLite JAM 20 (ICD)
LA-7789	JTAG-OAK-SEIB	JTAG Debugger for OAK/TeakLite SEIB (ICD)
LA-3774	JTAG-TEAKLITE-III	JTAG Debugger for TeakLite III (ICD)
LA-7834	JTAG-STARCORE-14	JTAG Debugger for StarCore 14 Pin (ICD)
LA-7845	JTAG-STARCORE-20	JTAG Debugger for StarCore 20 Pin (ICD)
LA-7832	JTAG-ZSP400	JTAG Debugger for ZSP400 DSP Core
LA-3712	JTAG-ZSP500	JTAG Debugger for ZSP500 DSP Core (ICD)
LA-3730	JTAG-MICROBLAZE	Debugger for MicroBlaze (ICD)
LA-7837	JTAG-NIOS-II	Debugger for NIOS-II (ICD)
LA-3750	JTAG-ARC	JTAG Debugger for ARC (ICD)
LA-3752	JTAG-ARC-XDP	JTAG Debugger for ARC XDP 60 (ICD)
LA-7848	JTAG-M8051EW-14	JTAG Debugger for M8051EW 14 Pins (ICD)
LA-7849	JTAG-M8051EW-16	JTAG Debugger for M8051EW 16 Pins (ICD)
LA-3760	JTAG-XTENSA	JTAG Debugger for Xtensa
Additional Options		
LA-7662	AD-HS-10-M32R	Adapter Half-Size 10 pin for M32R

Order No.	Code	Text
LA-2102	AD-HS-16	Adapter Half-Size 16 pin
LA-2101	AD-HS-20	Adapter Half-Size 20 pin
LA-3724	ADAP-STARCORE-EJECT	Adapter for StarCore Boards with Ejector
LA-3767	AUD-SH725X-ERNI	AUD SH725x Converter 14Pin/36Pin YA to ERNI
LA-7735	BDM-DSP56300	BDM Debugger for DSP56300 (ICD)
LA-7730	BDM-DSP56K	BDM Debugger for DSP56K (ICD)
LA-7717	BDM-MCS12	BDM Debugger for MCS12 (ICD)
LA-3723	CON-JTAG14-MICTOR	Conv. 14 Pin JTAG to Mictor38 for MPC55xx
LA-3815	CON-JTAG16-DAP	Conv. 16 Pin JTAG to DAP for TriCore/XC2000
LA-7941	CON-JTAG16-SAM-TC	Conv. 16 Pin OCDS-L1 to Samtec 60 for TriCore
LA-3722	CON-JTAG20-MICTOR	ARM Converter ARM-20 to Mictor-38
LA-3790	CON-MIPI34-XDP60	Converter Atom™ Debugger MIPI34 to XDP60
LA-3791	CON-MULTIPLE-XDP60	Conv. Atom™ Multiple Connectors to XDP60
LA-3825	CON-XDP60-HIR31	Conv. Intel® Atom™ Debugger to Hirose31
LA-3828	CON-XDP60-MIPI34	Converter Intel® Atom™ Debugger to MIPI34
LA-3826	CON-XDP60-ZIF24	Conv. Intel® Atom™ Debugger to ZIF24 pin
LA-3827	CON-XDP60-ZIF26	Conv. Intel® Atom™ Debugger to ZIF26 pin
LA-3770	CONV-ARM20/MIPI34	ARM Converter ARM-20 to MIPI-10/20/34
LA-7819	CONV-HUDI14-JTAG20	Converter H-UDI 14 to JTAG 20
LA-7822	CONV-JTAG20-HIROSE36	Converter JTAG 20 to Hirose 36
LA-7818	CONV-JTAG20-HUDI14	Converter JTAG 20 to H-UDI 14
LA-7823	CONV-JTAG20-MICTOR38	Converter JTAG 20 to Mictor 38
LA-3821	CONV-SH4-20-ASEBRK	Converter JTAG 20 ASEBRK
LA-3721	CONV-V850-GLEN	Converter GlenAir to 20 Pin/100 mil
LA-7936	CONV-V850/VR-KEL	Converter KEL to 20 Pin/100 mil
LA-7937	CONV-V850/VR-MICTOR	JTAG Converter to Mictor38 for V850/NEC VR
LA-3788	DAISY-CHAINER-JTAG20	Daisy Chainer 4 JTAG 20
LA-3776A	DEBUG-ATOM-A	JTAG Debugger for Atom™ Add.
LA-7729	DEBUG-MPC8260	JTAG Debugger for MPC82xx/MPC83xx(ICD)
LA-7729X	DEBUG-MPC8260-X	JTAG Debugger Extension for MPC8260/MPC8240
LA-7764X	DEBUG-MPC8560-X	JTAG Debugger Extension for MPC85XX/QorIQ

Order No.	Code	Text
LA-3735X	DEBUG-MPC86XX-X	JTAG Debugger Extension for MPC86xx
LA-7723A	DEBUG-PPC400-A	JTAG Debugger License for PPC400 Add.
LA-7752A	DEBUG-PPC44X-A	JTAG Debugger License for PPC44x Add.
LA-7721X	DEBUG-PPC603-X	JTAG Debugger Extension for PPC603(ICD)
LA-7719X	DEBUG-PPC74XX-X	JTAG Debugger Extension for MPC74xx (ICD)
LA-7777	EJTAG-MIPS-14/12	EJTAG MIPS Converter 14/12
LA-7798	EJTAG-MIPS32-14/24	EJTAG MIPS32 Converter 14/24
LA-7760A	EJTAG-MIPS32-A	EJTAG Debugger License for MIPS32 Add.
LA-7761A	EJTAG-MIPS64-A	EJTAG Debugger License for MIPS64 Add.
LA-1229	FLEXEXT-SAM-BTH-BSH	Flex Ext. for SAMTEC 60 pin BTH-BSH series
LA-3778A	JTAG-APS-A	JTAG Debugger License for APS Add.
LA-3750A	JTAG-ARC-A	JTAG Debugger License for ARC Add.
LA-7747	JTAG-ARM-CON-14-20	ARM Converter ARM-20 to/from ARM-14
LA-3726	JTAG-ARM-CON-20-20	ARM Converter 2x ARM-20 to ARM-20
LA-7748	JTAG-ARM-CON-20-TI14	Converter ARM-20 to TI-14
LA-3780	JTAG-ARM-CON-20-TI20	Converter ARM-20 to TI-14 or TI-20-Compact
LA-7744A	JTAG-ARM10-A	JTAG Debugger License for ARM10 Add.
LA-7744X	JTAG-ARM10-X	JTAG Debugger Extension for ARM10
LA-7765A	JTAG-ARM11-A	JTAG Debugger License for ARM11 Add.
LA-7765X	JTAG-ARM11-X	JTAG Debugger Extension for ARM11
LA-7746A	JTAG-ARM7-A	JTAG Debugger License for ARM7 Add.
LA-7746X	JTAG-ARM7-X	JTAG Debugger Extension for ARM7
LA-7742A	JTAG-ARM9-A	JTAG Debugger License for ARM9 Add.
LA-7742X	JTAG-ARM9-X	JTAG Debugger Extension for ARM9
LA-7831A	JTAG-C54X-A	JTAG Debugger License for TMS320C54X Add.
LA-7831X	JTAG-C54X-X	JTAG Debugger Extension for TMSC54X
LA-7830A	JTAG-C55X-A	JTAG Debugger License for TMS320C55x Add.
LA-7830X	JTAG-C55X-X	JTAG Debugger Extension for TMSC55X
LA-7839	JTAG-C6200	JTAG Debugger for TMS320C6200 (ICD)
LA-7839X	JTAG-C6200-X	JTAG Debugger Extension for TMS320C6200
LA-7838A	JTAG-C6400-A	JTAG Debugger License for TMS320C6400 Add.
LA-7841	JTAG-C6700	JTAG Debugger for TMS320C6700 (ICD)
LA-7841A	JTAG-C6700-A	JTAG Debugger License for TMS320C6700 Add.
LA-7841X	JTAG-C6700-X	JTAG Debugger Extension for TMS320C6700
LA-3711A	JTAG-CEVAX-A	JTAG Debugger License for CEVA-X Additional
LA-7843A	JTAG-CORTEX-A/R-A	JTAG Debugger License for CORTEX-A/-R Add.
LA-7843X	JTAG-CORTEX-A/R-X	JTAG Debugger Extension for CORTEX-A/-R
LA-7844A	JTAG-CORTEX_M-A	JTAG Debugger License for CORTEX-M Add.

Order No.	Code	Text
LA-7844X	JTAG-CORTEX_M-X	JTAG Debugger Extension for CORTEX-M
LA-7766	JTAG-H8S	JTAG Debugger for H8S (ICD)
LA-3764	JTAG-HUDI14-ST20	JTAG H-UDI14 to ST20 for ST7109
LA-7848A	JTAG-M8051EW-A	JTAG Debugger for M8051EW Add.
LA-3730A	JTAG-MICROBLAZE-A	JTAG Debug. Lic. for MicroBlaze Add.+Adapter
LA-7836A	JTAG-MMDSP-A	JTAG Debugger License for MMDSP
LA-7734X	JTAG-MPC5200-X	JTAG Debugger Extension for MPC5200/MPC512x
LA-7789A	JTAG-OAK-SEIB-A	JTAG Debugger for TeakLite/OAK SEIB (ICD)
LA-7789X	JTAG-OAK-SEIB-X	JTAG Debugger Extension for TeakLite/OAK SEIB
LA-3731	JTAG-PPC-CON-XILINX	JTAG Converter to Xilinx Target Adapter 14
LA-7986	JTAG-PPC4XX-2X38	Mictor-Mictor-JTAG 16pin Converter for PPC4xx
LA-7850A	JTAG-R8051XC-A	JTAG Debugger for R8051XC Add.
LA-7980	JTAG-SH-CON-14P-36H	JTAG SH Converter 14 Pin to 36 Pin Hirose
LA-7817A	JTAG-SH4-A-20	JTAG Debugger License for SH2/SH3/SH4 Add.
LA-3765	JTAG-SH725X-14P-MIC	JTAG SH725x Converter 14 Pin to Mictor
LA-7845A	JTAG-STARCORE-20-A	JTAG Debugger License for StarCore 20 Pin Add
LA-7763	JTAG-SUPER10	JTAG Debugger for Super10 (ICD)
LA-7774A	JTAG-TEAK-JAM-20-A	JTAG Debug. for Teak/TeakLite JAM 20 Add.
LA-7774X	JTAG-TEAK-JAM-X	JTAG Debugger Extension for TEAK-JAM
LA-3774A	JTAG-TEAKLITE-III-A	JTAG Debugger for TeakLite III Add. (ICD)
LA-3774X	JTAG-TEAKLITE-III-X	JTAG Debugger Extension for TEAKLITE-III
LA-7847A	JTAG-TMS320C28X-A	JTAG Debugger License for TMS320C28X Add.
LA-3760A	JTAG-XTENSA-A	JTAG Debugger License for Xtensa Add.
LA-7832A	JTAG-ZSP400-A	JTAG Debugger for ZSP400 DSP Core Additional
LA-3712A	JTAG-ZSP500-A	JTAG Debugger for ZSP500 DSP Core Additional
LA-7960X	MULTICORE-LICENSE	License for Multicore Debugging
LA-3792	RX-JTAG14-36Y-MIC	Converter RX-JTAG14-AUD to Mictor
LA-3789	RX-JTAG14-MIC	Converter RX-JTAG14 to Mictor
LA-7973X	SH2A-OC-TRACE	JTAG Onchip Trace Support for SH2A
LA-7970X	TRACE-LICENSE-ARM	Trace License for the ARM Architecture
LA-7976X	TRACE-LICENSE-C55X	Trace License for TMS320C55X

Order No.	Code	Text
LA-7979X	TRACE-LICENSE-C64XP	Trace License for TMS320C64x+
LA-7977X	TRACE-LICENSE-CEVAX	Trace License for Ceva-X
LA-7971X	TRACE-LICENSE-MIPS32	Trace License for the MIPS32
LA-7969X	TRACE-LICENSE-TEAK3	Trace License for TEAKLITE-III

Contact

International Representative

Argentina

ANACOM Software e Hardware Ltd
Mr. Rafael Sorice
Rua Nazareth, 807, Barcelona
BR-09551-200 S,o Caetano do Sul, SP
Phone: 0055 11 3422-4200
FAX: 0055 11 3422-4242
EMAIL: rsorice@anacom.com.br

Australia

Embedded Logic Solutions P/L
Mr. Ramzi Kattan
Suite 2, Level 3
144 Marsden Street
Parramatta NSW 2150
Phone: ++61 2 9687 1880
FAX: ++61 2 9687 1881
EMAIL: sales@emlogic.com.au

Austria

Lauterbach GmbH
Mr. Stefan Kolbinger
Altlaufstr. 40
D-85635 Höhenkirchen-Siegertsbrunn
Phone: ++49 8102 9876 129
FAX: ++49 8102 9876 170
EMAIL: stefan.kolbinger@lauterbach.com

Belgium

Tritec Benelux B.V.
Mr. Robbert de Voogt
Stationspark 550
NL-3364 DA Slidrecht
Phone: ++31 184 41 41 31
FAX: ++31 184 42 36 11
EMAIL: software@tritec.nl

Brazil

ANACOM Software e Hardware Ltd
Mr. Rafael Sorice
Rua Nazareth, 807, Barcelona
BR-09551-200 S,o Caetano do Sul, SP
Phone: 0055 11 3422-4200
FAX: 0055 11 3422-4242
EMAIL: rsorice@anacom.com.br

Canada

Lauterbach Inc.
Mr. Udo Zoettler
4 Mount Royal Ave.
USA-Marlborough, MA 01752
Phone: ++1 508 303 6812
FAX: ++1 508 303 6813
EMAIL: info_us@lauterbach.com

China Beijing

Suzhou Lauterbach Technologies Co.,Ltd.
Mr. Linglin He
Beijing Office
A3,South Lishi Road, XiCheng District
Beijing 100037, P.R. China
Phone: 0086-10-68023502
FAX: 0086-10-68023523
EMAIL: linglin.he@lauterbach.com

China Shenzhen

Suzhou Lauterbach Technologies Co.,Ltd.
1406/E Xihaimingzhu Building
No.1 Taoyuan Road, Nanshan District
Shenzhen 518052, P.R. China
Phone: 0086-755 8621 0671
FAX: 0086-755 8621 0675
EMAIL: emily.zhang@lauterbach.com

China Suzhou

Suzhou Lauterbach Technologies Co.,Ltd.
Mr. Tom Meyer
Room 1605, Xing Hai International Square
No.200, Xing Hai Street
Suzhou, 215021 P.R. of China
Phone: 0086-512 6265 8030
FAX: 0086-512 6265 8032
EMAIL: info_cn@lauterbach.com

Denmark

Nohau Danmark A/S
Mr. Flemming Jensen
Klausdalsbrøvej 493
DK-2730 Herlev
Phone: ++45 44 52 16 50
FAX: ++45 44 52 26 55
EMAIL: info@nohau.dk

Egypt

Wantech Egypt
Mr. Wagih A. Nawara
5 Shafik Ghalie St., Suite 2
Off Pyramids Road, Giza
Cairo 12111
Phone: ++20 10 1251955
FAX: ++20 2 35877303
EMAIL: sales@wantech.net.com

Finland

Nohau Solutions Finland
Mr. Leevi Lehtinen
Teknobulevardi 3-5
FI-01531 Vantaa
Phone: ++358 40 546 1469
FAX: ++358 9 2517 8101
EMAIL: sales@nohau.fi

France

Lauterbach S.A.R.L.
Mr. Jean-Pierre Paradiso
Europarc - Le Hameau B
135 Chemin Des Bassins
F-94035 CrEteil Cedex
Phone: ++33 1 49 56 20 30
FAX: ++33 1 49 56 20 39
EMAIL: info_fr@lauterbach.com

Germany

Lauterbach GmbH
Altlaufstr. 40
D-85635 Höhenkirchen-Siegertsbrunn
Phone: ++49 8102 9876 0
FAX: ++49 8102 9876 999
EMAIL: info@lauterbach.com

Germany North

Lauterbach GmbH
Mr. Klaus Hommann
Leonhardring 5
D-31319 Sehnde
Phone: ++49 5138 6185 5
FAX: ++49 5138 6185 3
EMAIL: klaus.hommann@lauterbach.com

Germany South

Lauterbach GmbH
Mr. Stefan Kolbinger
Altlaufstr. 40
D-85635 Höhenkirchen-Siegertsbrunn
Phone: ++49 8102 9876 129
FAX: ++49 8102 9876 170
EMAIL: stefan.kolbinger@lauterbach.com

India-Bangalore

Electro Systems Associates Pvt. Ltd.
Mr. G. V. Gurunatham
Subramanyanagar
4215 JK Complex First Main Rd.
India-Bangalore 560 021
Phone: ++91 80 23577924
FAX: ++91 80 23475615
EMAIL: sales@esaindia.com

India-Chennai

Electro Systems Associates Pvt. Ltd.
Mr. D. Kannan
No.109 /59A - Ground Floor
IV Avenue, Ashok Nagar
India- Chennai - 600 083 Tamilnadu
Phone: ++91 044-24715750
FAX:
EMAIL: chennai@esaindia.com

India-Delhi

Electro Systems Associates Pvt. Ltd.
Mr. R.K. Bhandari
No. 705, 7th Floor, Laxmi Deep
Shivajinagar
India- Delhi - 110 092
Phone: ++91 11-22549351
FAX:
EMAIL: delhi@esaindia.com

India-Hyderabad

Electro Systems Associates Pvt. Ltd.
Mr. C.V.M. Sri Ram Murthy
Shop No. 14, "Global Enclave"
Bhagyanagar Colony, Kukat pally
India-Hyderabad 500 072
Phone: ++91 40-23063346
FAX: ++91 40-23063346
EMAIL: hyderabad@esaindia.com

India-Pune

Electro Systems Associates Pvt. Ltd.
Mr. Milind Pathak
Shriram Complex, 1126/1, Model Colony
Shivajinagar
India-Pune - 411 016
Phone: ++91 20 - 30462035 / 2566
FAX: ++91 20-25677202
EMAIL: pune@esaindia.com

Ireland

Lauterbach Ltd.
Mr. Barry Lock
11 Basepoint Enterprise Centre
Stroudley Road
Basingstoke, Hants RG24 8UP
Phone: ++44-1256-333-690
FAX: ++44-1256-336-661
EMAIL: info_uk@lauterbach.com

Israel

Itec Ltd.
Mr. Mauri Gottlieb
P.O.Box 10002
IL-Tel Aviv 61100
Phone: ++972 3 6491202
FAX: ++972 3 6497661
EMAIL: general@itec.co.il

Italy

Lauterbach Srl
Mr. Maurizio Menegotto
Via Enzo Ferrieri 12
I-20153 Milano
Phone: ++39 02 45490282
FAX: ++39 02 45490428
EMAIL: info_it@lauterbach.com

Japan

Lauterbach Japan, Ltd.
Mr. Kenji Furukawa
3-9-5 Shinyokohama
Kouhoku-ku
Yokohama-shi, Japan 222-0033
Phone: ++81-45-477-4511
FAX: ++81-45-477-4519
EMAIL: info@lauterbach.co.jp

Luxemburg

Tritec Benelux B.V.
Mr. Robbert de Voogt
Stationspark 550
NL-3364 DA Sliedrecht
Phone: ++31 184 41 41 31
FAX: ++31 184 42 36 11
EMAIL: software@tritec.nl

Malaysia

Flash Technology
Mr. Teo Kian Hock
No 61, # 04-15 Kaki Bukit Av 1
Shun Li Industrial Park
SGP-Singapore 417943
Phone: ++65 6749 6168
FAX: ++65 6749 6138
EMAIL: teokh@flashtech.com.sg

Mexico

Lauterbach Inc.
Mr. Udo Zoettler
4 Mount Royal Ave.
USA-Marlborough, MA 01752
Phone: ++1 508 303 6812
FAX: ++1 508 303 6813
EMAIL: info_us@lauterbach.com

Netherlands

Tritec Benelux B.V.
Mr. Robbert de Voogt
Stationspark 550
NL-3364 DA Sliedrecht
Phone: ++31 184 41 41 31
FAX: ++31 184 42 36 11
EMAIL: software@tritec.nl

New Zealand

Embedded Logic Solutions P/L
Mr. Ramzi Kattan
Suite 2, Level 3
144 Marsden Street
Parramatta NSW 2150
Phone: ++61 2 9687 1880
FAX: ++61 2 9687 1881
EMAIL: sales@emlogics.com.au

Norway

Nohau Solutions Norway
Mr. Tom Traelvik
Skoyenasveien 5 D
N 0686 Oslo
Phone: ++47 92 44 22 09
FAX: ++47 94 76 10 19
EMAIL: sales@nohau.no

Poland

Quantum Sp.z o.o. Korp. Transf
Mr. Czeslaw Bil
ul. Wystawowa 1
51-618 Wroclaw
Phone: ++48 71 362 6356
FAX: ++48 71 362 6357
EMAIL: info@quantum.com.pl

Portugal

Captura Electronica, SCCL
Mr. Juan Martinez
c/Duero, 40
E-08031 Barcelona
Phone: ++34 93 429 5730
FAX: ++34 93 407 0778
EMAIL: info@captura-el.com

Russia

RTSoft
Mr. Alexey Isaev
Nikitinskaya 3
RUS-105037 Moscow
Phone: ++7-495-742-6828
FAX: ++7-495-742-6829
EMAIL: sales@rtsoft.msk.ru

Singapore

Flash Technology
Mr. Teo Kian Hock
No 61, # 04-15 Kaki Bukit Av 1
Shun Li Industrial Park
SGP-Singapore 417943
Phone: ++65 6749 6168
FAX: ++65 6749 6138
EMAIL: teokh@flashtech.com.sg

South Korea

MDS Technology Co.,Ltd.
Mr. Sangheon Lee
15F Kolon Digital Tower Vilant
#222-7, Guro-3dong, Guro-gu
Seoul, 152-777, ROK
Phone: ++82 2 2106 6000
FAX: ++82 2 2106 6004
EMAIL: trace32@mdstec.com

Spain

Captura Electronica,SCCL
Mr. Juan Martinez
c/Duero, 40
E-08031 Barcelona
Phone: ++34 93 429 5730
FAX: ++34 93 407 0778
EMAIL: info@captura-el.com

Sweden

Nohau Solutions AB
Mr. Magnus Engström
Derbyvägen 4
SE-21235 Malmö
Phone: ++46 40 59 22 04
FAX: ++46 40 59 22 29
EMAIL: sales@nohau.se

Switzerland

JDT Jberg DatenTechnik
Mr. Andreas Iberg
Zimmereistrasse 2
CH-5734 Reinach AG
Phone: ++41 62 7710 886
FAX: ++41 62 7717 187
EMAIL: Andreas.Iberg@jdt.ch

Taiwan

Superlink Technology Corp.
Mr. Sulin Huang
3F-8, No.77, Shin-Tai-Wu Rd, Sec1
Taipei Hsien 221, Taiwan, R.O.C.
Phone: ++886 2 26983456
FAX: ++886 2 26983535
EMAIL: info.stc@superlink.com.tw

Turkey-1

Tektronik Muh. ve Tic. Ltd.
Mr. Hakan Yavuz
Mahatma Gandhi Cad 68A/2
G.O.Pasa
06700 Ankara
Phone: ++90 312 437 3000
FAX: ++90 312 437 1616
EMAIL: info@tekntronik.com.tr

Turkey-2

G3TEK Embedded Technologies Ltd.
Mr. Celal Aygun
Ilkyerlesim Mah. 445.
Sok. No: 48
06370 Batıkent/Ankara
Phone: ++90 312 3324769
FAX: ++90 312 3324769
EMAIL: info@g3tek.com

UK

Lauterbach Ltd.
Mr. Barry Lock
11 Basepoint Enterprise Centre
Stroudley Rd
Basingstoke, Hants RG24 8UP
Phone: ++44 (0) 1256-333690
FAX: ++44 (0) 1256-336661
EMAIL: info_uk@lauterbach.com

USA East

Lauterbach Inc.
Mr. Udo Zoettler
4 Mount Royal Ave.
USA-Marlborough, MA 01752
Phone: ++1 508 303 6812
FAX: ++1 508 303 6813
EMAIL: info_us@lauterbach.com

USA West

Lauterbach Inc.
Mr. Jerry Flake
1111 Main Street, Suite 115
USA-Vancouver, WA, 98660
Phone: ++1 503 524 2222
FAX: ++1 503 524 2223
EMAIL: jerry.flake@lauterbach.com

Additional Information

<http://www.lauterbach.com>

Lauterbach GmbH

Altlaufstr. 40
D-85649 Hofolding
Tel. ++49 8102 9876-0 FAX -999
info@lauterbach.com
http://www.lauterbach.de

Lauterbach Inc.

4 Mount Royal Ave.
Marlboro MA 01752
Phone (508) 303 6812 FAX (508) 303 6813
info_us@lauterbach.com
http://www.us.lauterbach.com

Lauterbach Ltd.

11 Basepoint Enterprise Ctre Stroudley Road
Basingstoke, Hants RG24 8UP
Phone ++44-1256-333-690 FAX -661
info_uk@lauterbach.com
http://www.lauterbach.co.uk

Lauterbach S.A.R.L.

135 Chemin Des Bassins
F-94035 Créteil Cedex
Phone ++33-149-562-030
FAX ++33-149-562-039
info_fr@lauterbach.com
http://www.lauterbach.fr

Lauterbach Japan, Ltd.

3-9-5 Shinyokohama Kouhoku-ku
Yokohama-shi Japan 222-0033
Phone ++81-45-477-4511 FAX -4519
info_j@lauterbach.com
http://www.lauterbach.co.jp

Lauterbach s.r.l.

Lauterbach s.r.l.
Via Enzo Ferrieri 12
I-20153 Milano
Phone ++39 02 45490282
FAX ++39 02 45490428
info_it@lauterbach.it
http://www.lauterbach.it

Suzhou Lauterbach Consulting Co.,Ltd.

Room 1605, Xing Hai International Square
No.200, Xing Hai Street
Suzhou, 215021 PR of China
Phone: 0086-512 6265 8030
FAX: 0086-512 6265 8032
info_cn@lauterbach.cn
http://www.lauterbach.cn

Disclaimer

The information presented is intended to give overview information only. Changes and technical enhancements or modifications can be made without notice.