

secac  
2013  
greensboro

Juried Exhibition

Gatewood Gallery  
UNCG Art Department

October 11-November 2, 2013

Curated by Nancy M. Doll  
Director, Weatherspoon Art Museum

Elaine Abbe

*Ain't Misbehaven*  
Mixed Media,  
17" x 15" x 1"



Steve Arbury

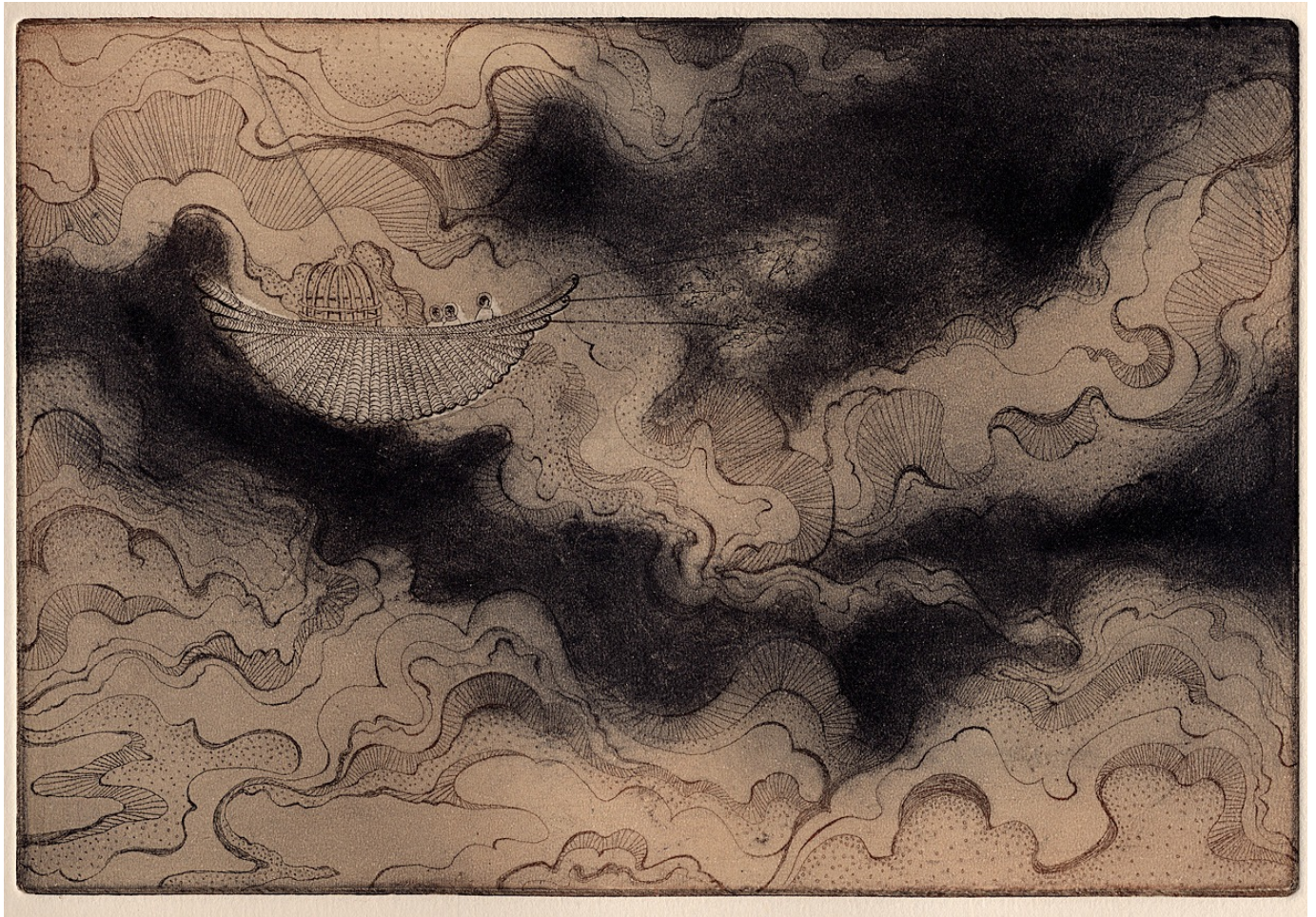
*Self-Portrait at Reynolda House*  
Digital Photograph  
16" x 20" (Framed)





Cynthia Brinich-Langlois

*Clouds*  
Etching, Aquatint, and Drypoint  
11" x 14"



Efram Burk

*Untitled II Staircase*  
Digital Photograph  
(Edition of 3)





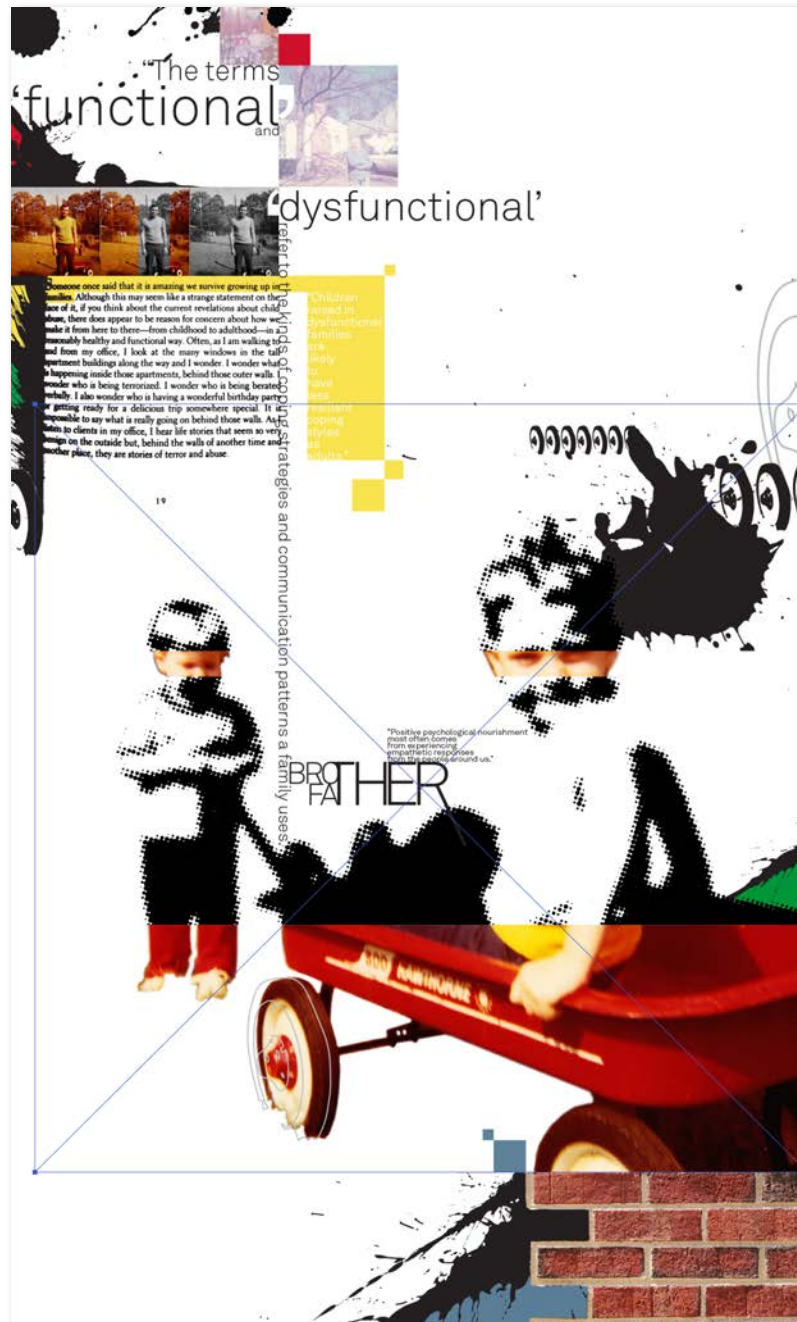
Jessica Burke

*Crystal as Princess Cinderella*  
Graphite on Arches HP  
20" x 16



Kevin Cates

*Dysfunctional Metaphor*  
Digital Design  
18" x 30"



Chung-Fan Chang

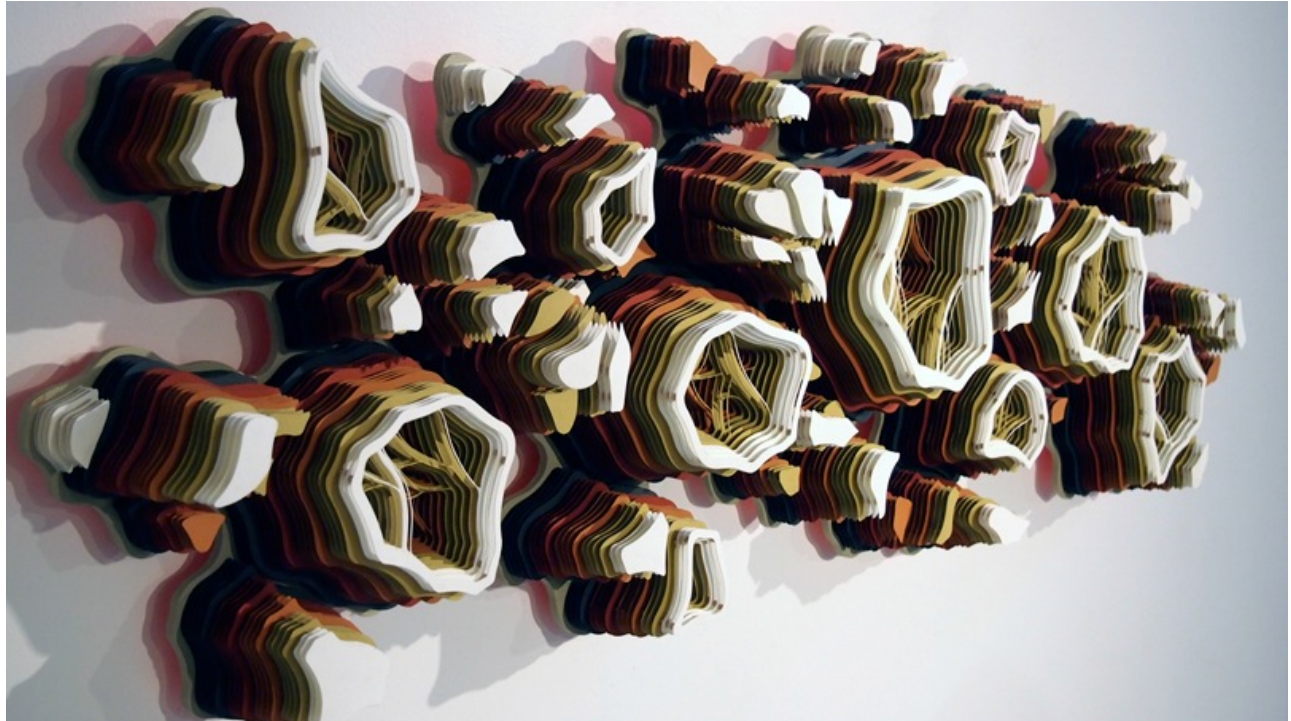
*Xuanda's Land*  
Acrylic and Oil on Canvas  
25"x 25"





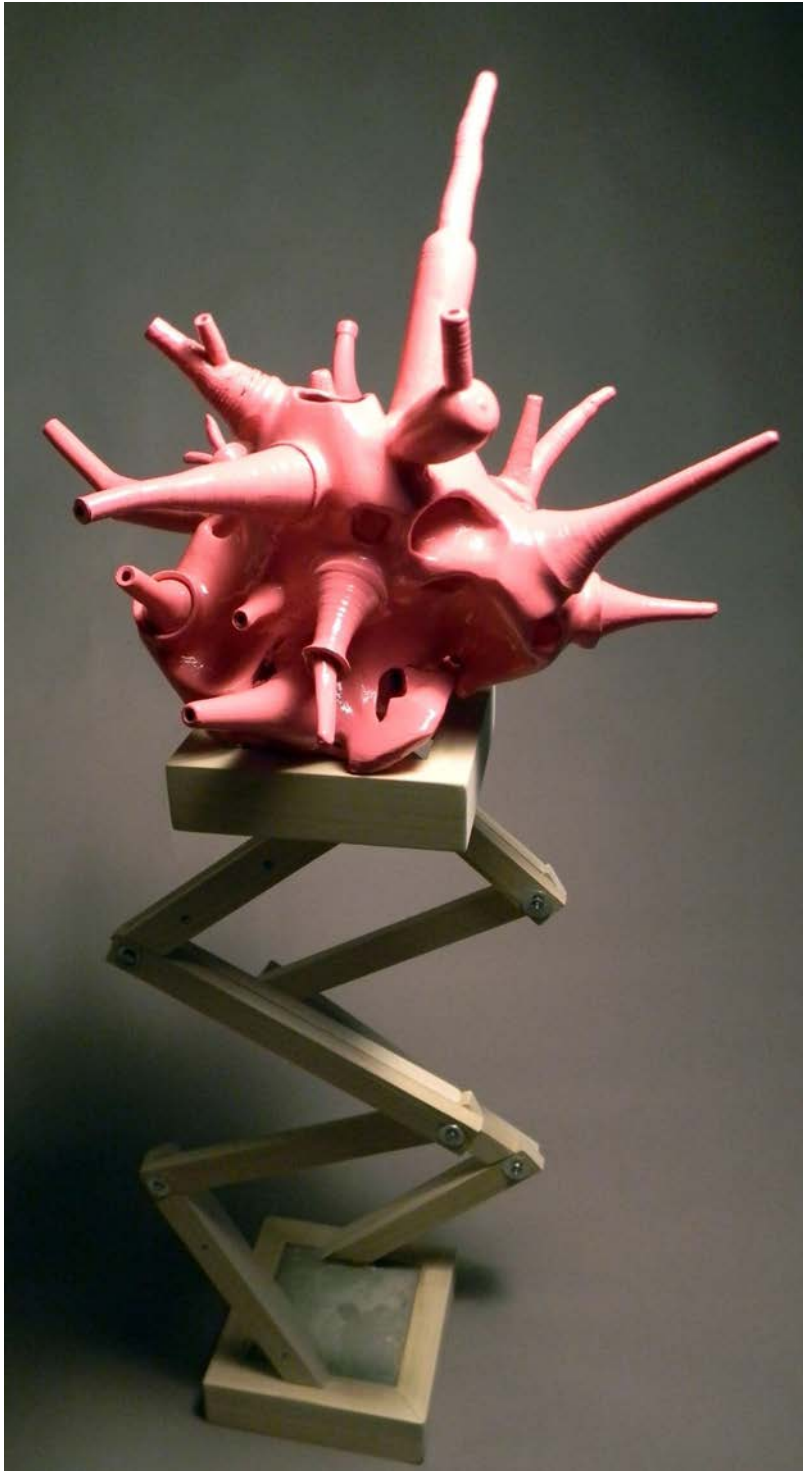
Charles Clary

*Patiflasmic Carcinoma*  
Hand-cut Paper and Acrylic on Panel  
16" x 50" x 6"



Phillip Counselman

*Huff & Puff*  
Ceramic-Concrete-Metal-Wood  
(wheelthrown, kinetic base)  
52" x 23"



Vanessa Cruz

*Dublin Stories Series #2*  
Digital Print, Gouache, Charcoal, Pastel  
A3





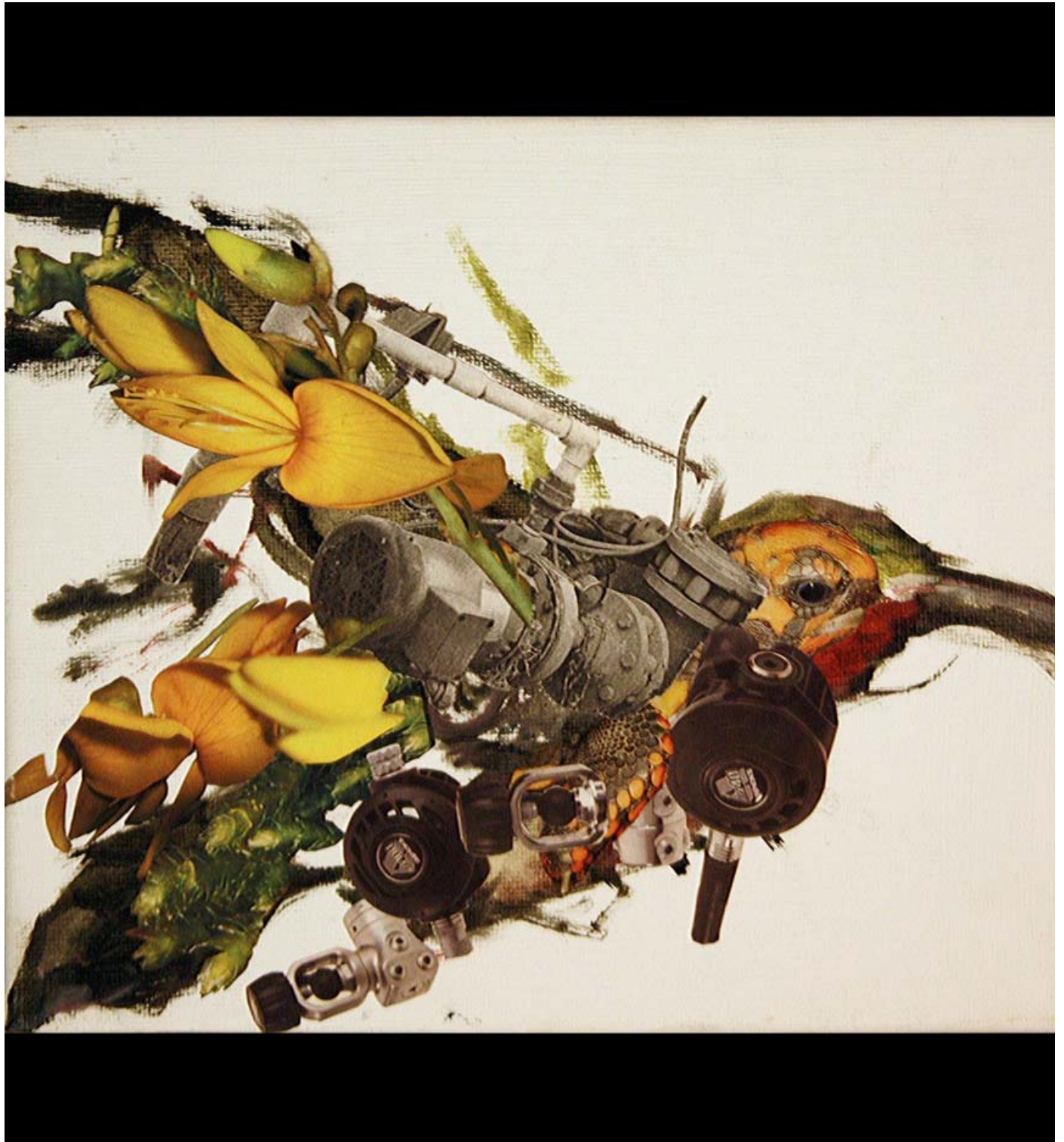
Rene Culler

*Byzantium Buttress 01*  
Fused and Slumped Glass  
28" x 22" x 1"



Joshua Hunter Davis

*Bird in Flight*  
Mixed Media Collage on Canvas  
8" x 10"





Brent Dedas

*Revision #4*

Acrylic, Mixed Media and Resin on Canvas  
24" x 20"





Alison Denyer

*Arctic X*  
Colored Pencil on Paper  
13" x 13"



Heather Deyling

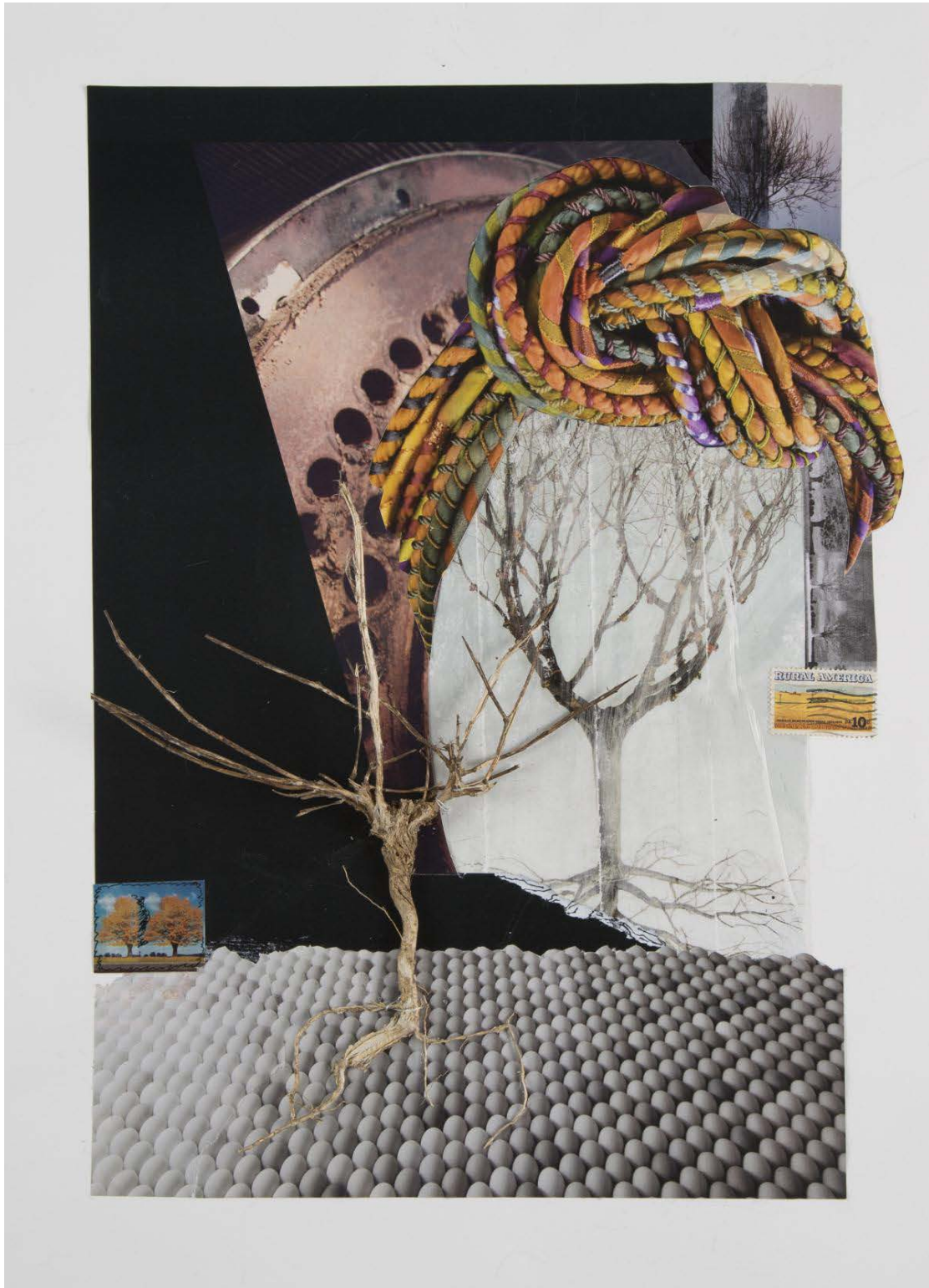
*Procession*  
Acrylic on Felt  
24" x 56" x 70"  
(Variable)





Nofa Dixon

*Tree of Life*  
Collage  
22" x 26"





Richard Doubleday

*Education Access for Everyone*  
Adobe Illustrator, Ink Jet Print  
25" x 35"



Kurt Dryhaug

*Tractor Plow*  
Cast Iron and Enamel Paint  
6.5" x 14.5" x 8"



Amy Feger

*Vacation After Spill*  
Acrylic and Pins on a Map  
14" x 17"





Julia Feldman

*Admit One Elephant*

Antique Cotton Tablecloth, Found Objects, Hand and Machine Embroidery, Appliqué, Image Transfers, Fabric Printing, Painting, Dyeing, Quilting; Material: Cotton, Silk, Wool, Found Objects  
44" x 45"



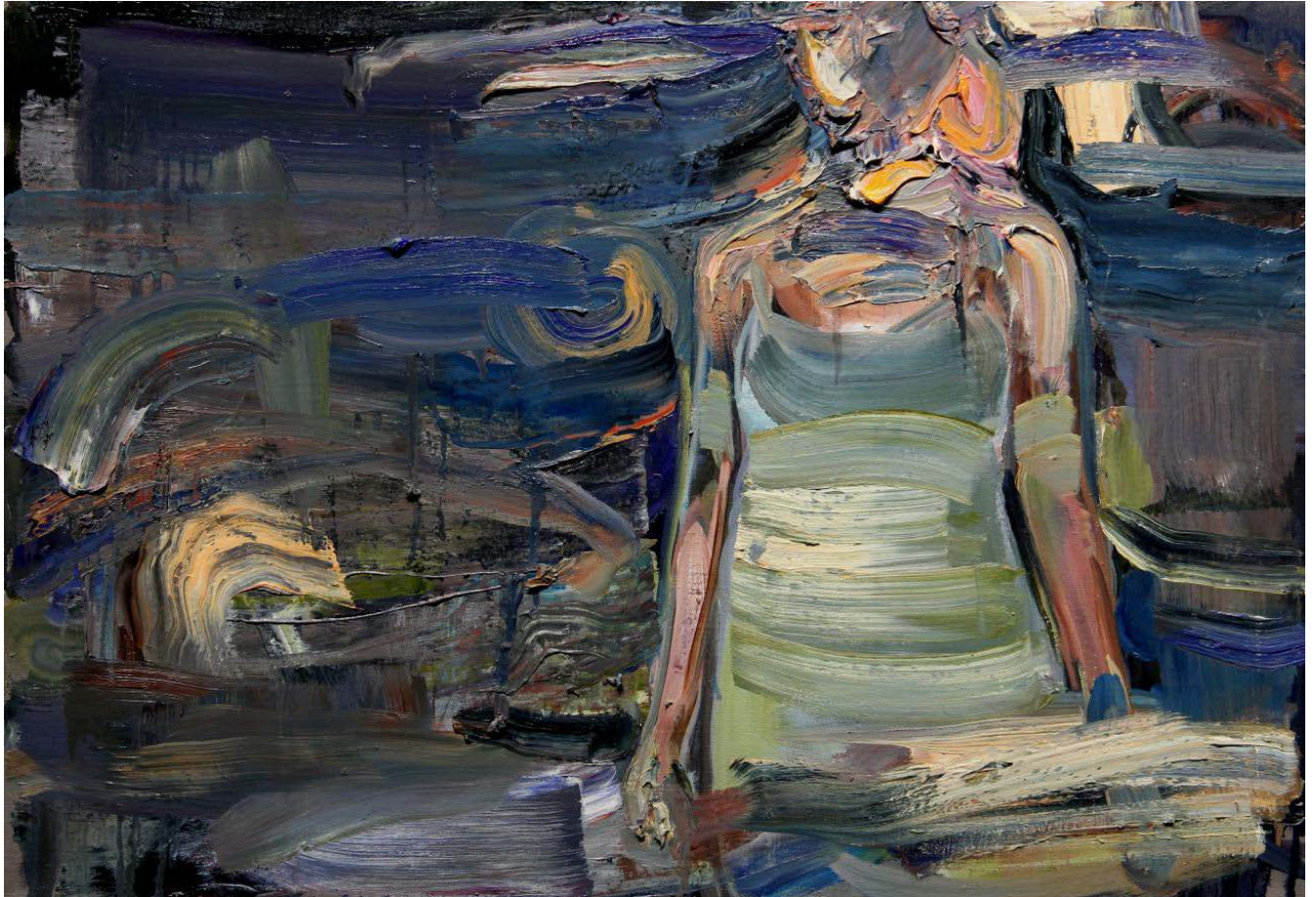
Holly Fischer

*Siren*  
Low-fire White Clay  
25" x 16" x 14"



Mira Gerard

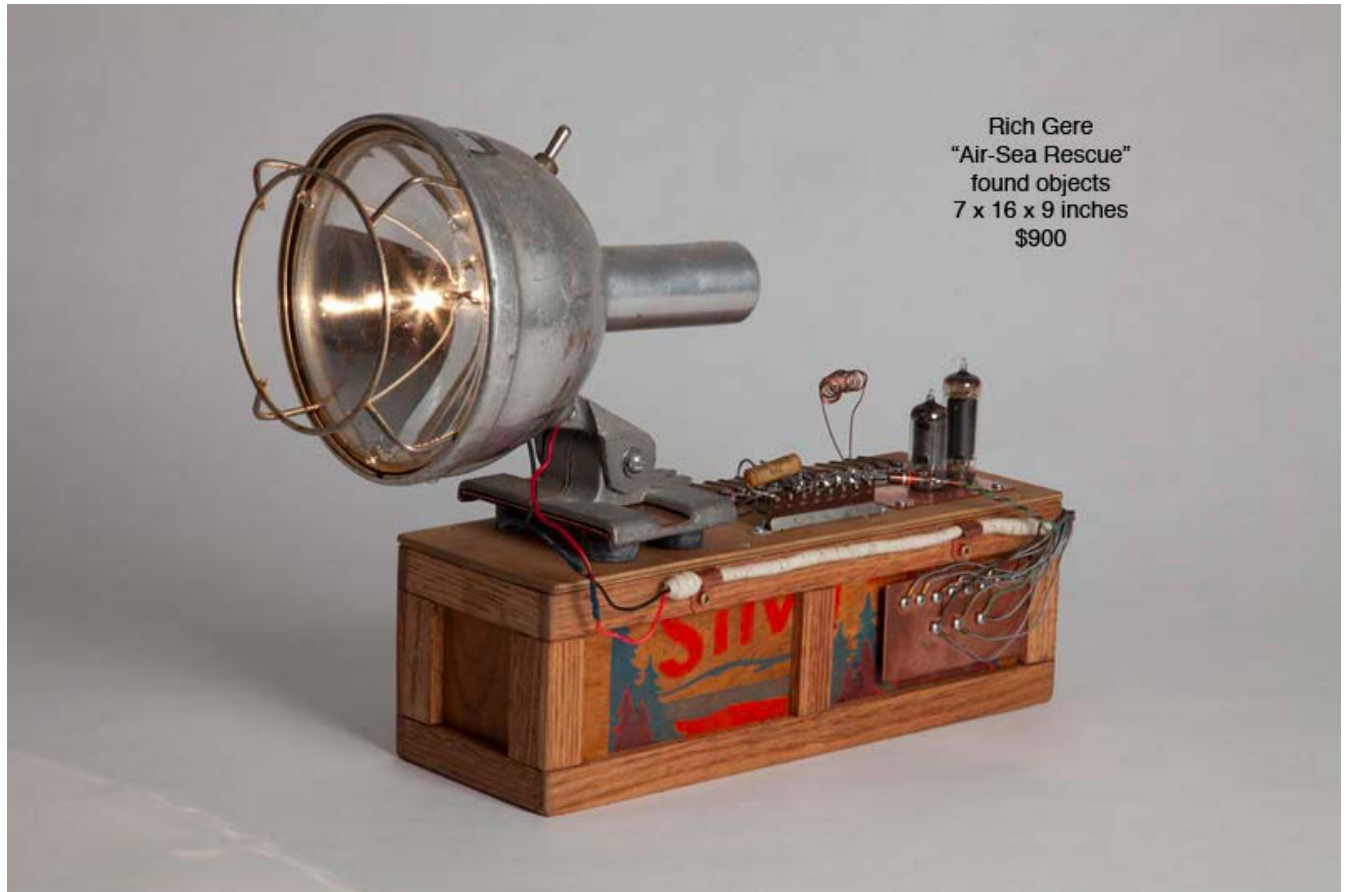
*Sunburst and Snowblind*  
Oil on Linen  
20" x 26"





Rich Gere

*Air-Sea Rescue*  
Found Objects  
7" x 16" x 9"



Rachel Green

*Cyber Trike*  
X-Box Controller, Circuit Boards,  
Lawn Mower Wheels  
15"X12"X18"



Jenny K. Hager

*Flamed Hoof*  
Mixed Media  
3' x 2.5' x 6"





Anne Herbert

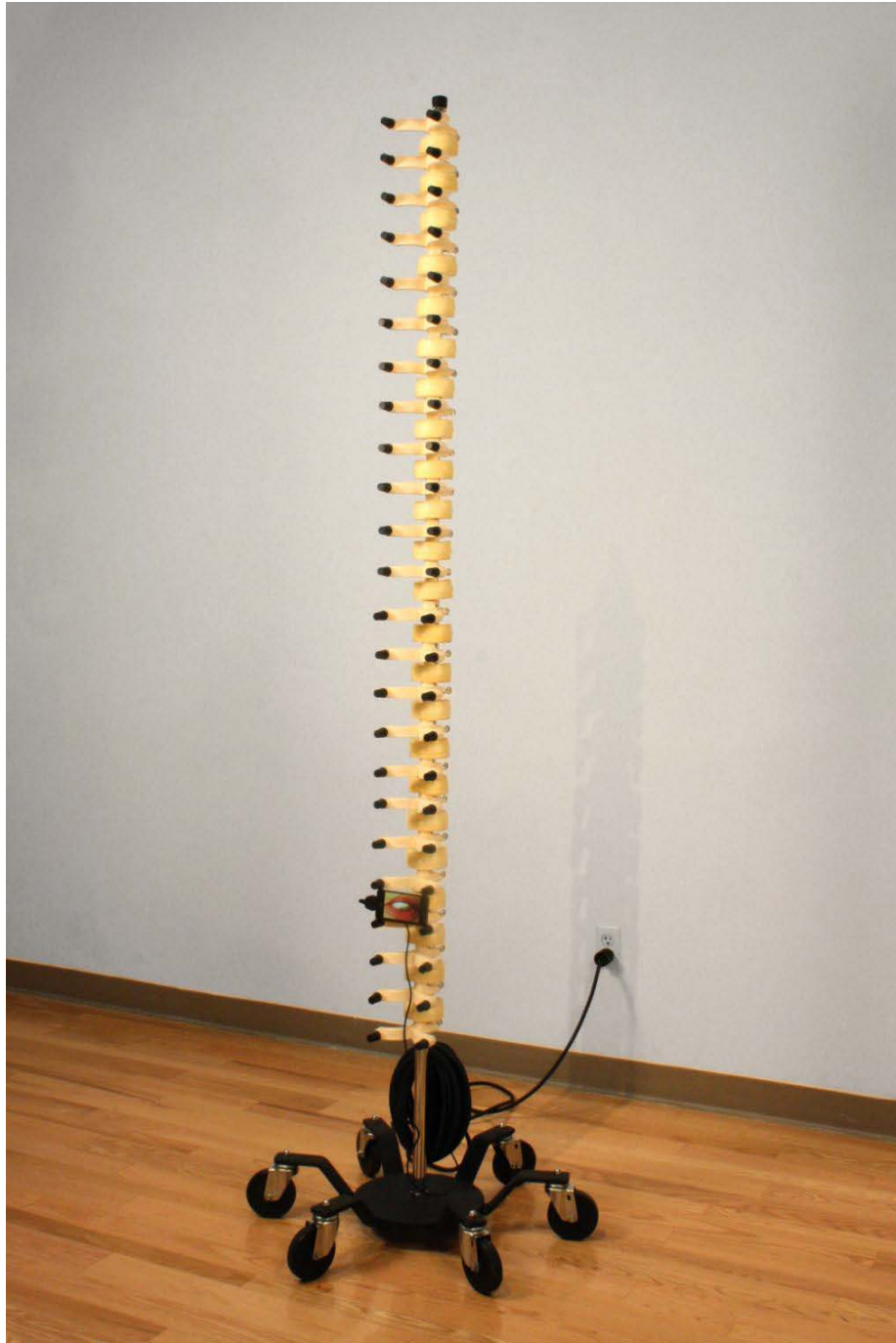
*Fold*  
Acrylic and Spray Paint on Raw Muslin  
56" x 38"



Ron Hollingshead

*Rupture*

Plastic, Steel, Rubber, Cast  
Expandable Foam, IV pole, iPod Touch  
84" x 26" x 26"



Michael Holsomback

*Twenty Seven*  
Oil and Enamel on Canvas  
48" x 72"





Rocky Horton

*All the Songs God is Responsible for According to  
Grammy Awards® Acceptance Speeches, 1971-2012*  
Video (Variable Dimensions)



Jason John

*Lift*  
Oil and Wax on Linen  
40" x 40"



Jerry R. Johnson

A 'Place of Sense' (*truth imagined*) for Rose  
*Bombs and Collateral Damage*  
Analog Drawing / Digital Formation  
30" x 24"





Ann Pegelow Kaplan

*Transit I*  
Photographic C-Print Mounted on Aluminum  
40" x 40"



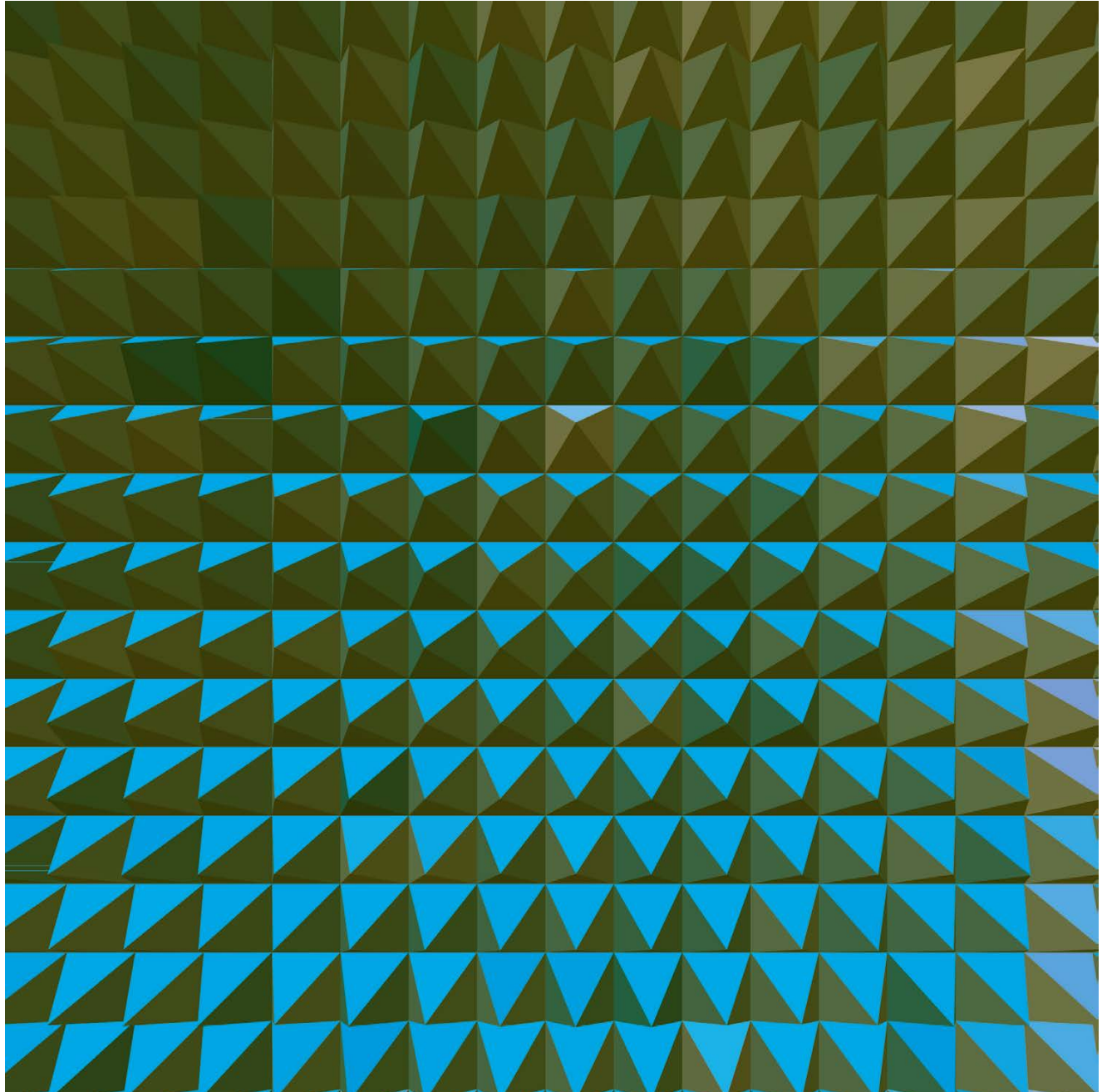
Miki Kato-Starr

*Surrender*  
Acrylic and Pencil on Wood Panel  
36" diameter



Joo Kim

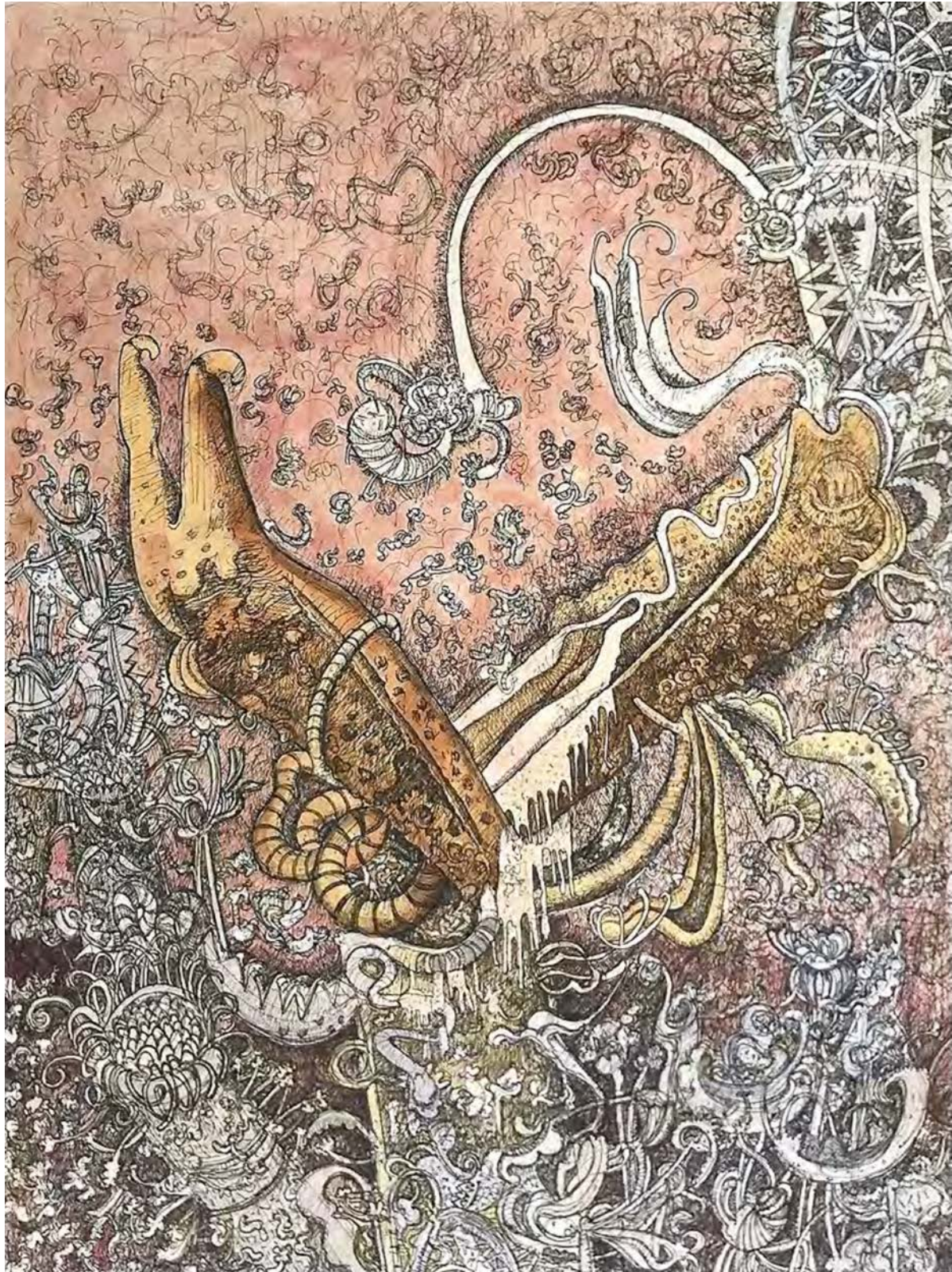
*Patterns in Nature 1*  
Mixed Media  
27" x 27"





Clive King

*Succulent Intruder*  
Ink on Paper  
39" x 47"





Julia Kjelgaard

*L'Hinduostan (Between the Known and the Unknown)*  
Archival Digital Print on Canvas, Acrylic  
28" x 25"





Tatiana Klacsmann

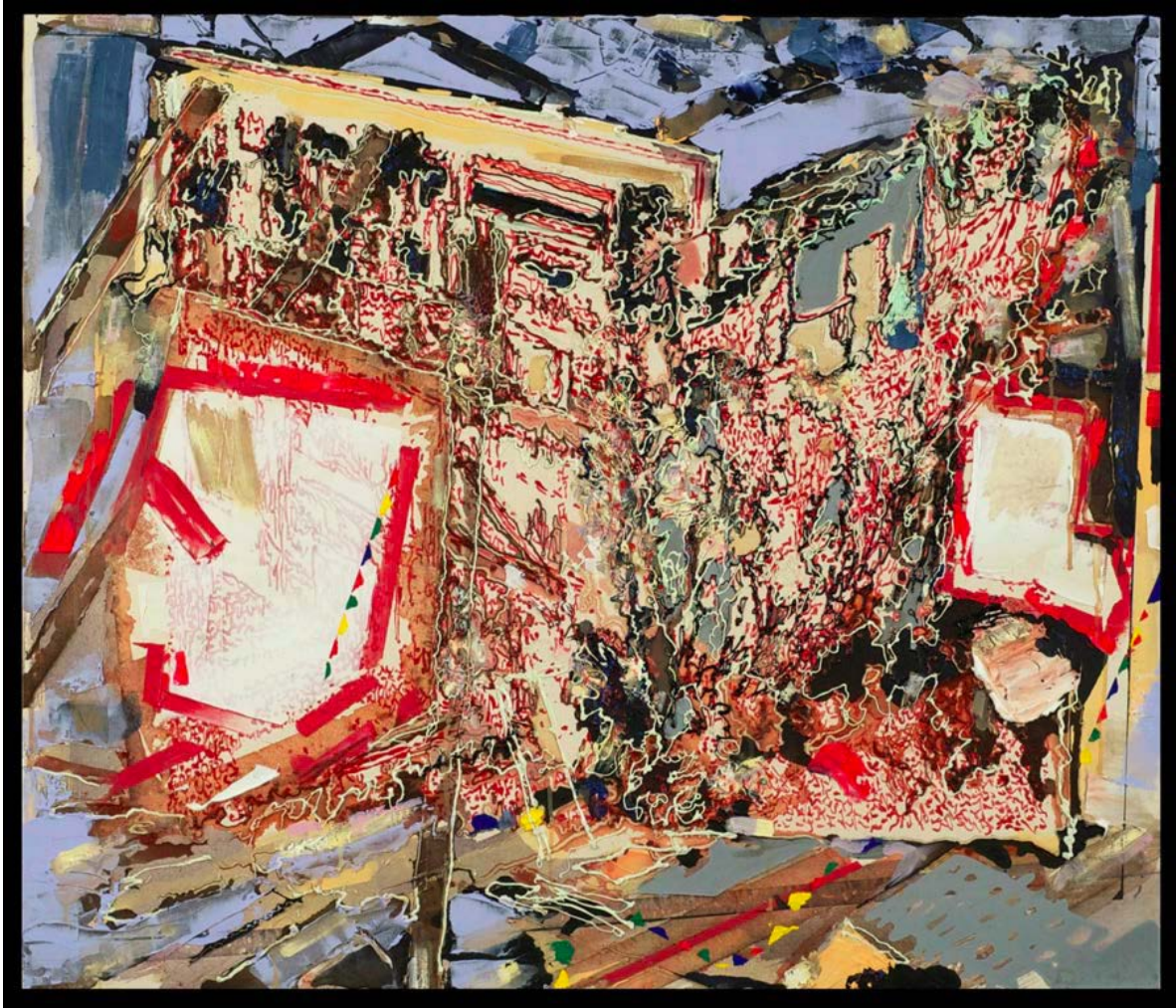
*The Scrollwork*  
Mixed Media on Fabric  
24" x 18"





Matthew Kolodziej

*Bandage*  
Acrylic on Canvas  
42" x 49"





Heidi Lingamfelter

*Davis Theater: Montgomery Alabama*  
23-colored Screen Print  
25.5" x 19"



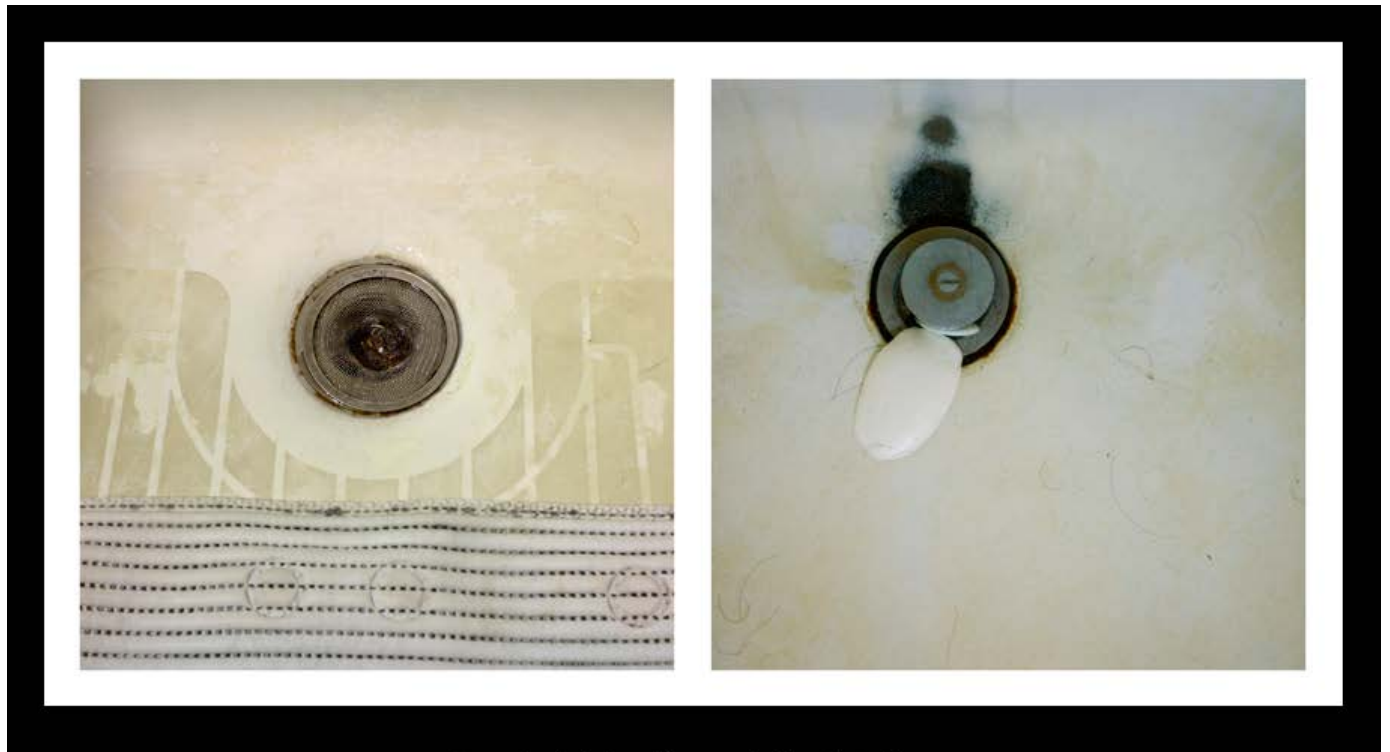
Dominic Lippillo & Mark Schoon

*Drains*

From the Collaborative Photo Series Anti-Local

C Print

11" x 14"





Beauvais Lyons

*Burmese Lion Hawk*  
Lithograph  
28" x 22"



Emilio Maldonado

*Look*  
Mixed Media  
Variable Dimensions



Gregory Martin

*Beetle*  
Oil on Linen  
22" x 30"





Doug McAbee

*In the Parking Lot*  
Ink on Wood Panel  
12" x 24"



Aynslee Moon

*When wind blows from extinguished stars*  
Watercolor, Charcoal, Acrylic, and  
Colored Pencil on Cut Paper  
Approx. 18" x 24"



Quintin Owens

*Upright Tumbleweeds*  
Porcelain, Recycled Materials  
40" x 36" x 36"





Simone Paterson

*Melborne, Vic.*  
Archival Print on Satin  
40" x 30"



Vesna Pavlović

*Portraits Without Script: Mette*, 2012  
Endura metallic black & white print  
20" x 30"



Duane Paxon

*Spinal Heretic*  
Wood, Fiberglass, and Steel  
156" x 40" x 18"





Blanche Nettles Powers

*That yard's a mighty long place for little girls to  
cross at night*  
Oil and Graphite on Linen  
47" x 47"



Pulled Resources

*I'm Not Here To Make Friends*  
Mixed Media  
30" x 40"





Sherry Saunders

*Old Time, New Eternity*  
C-Print  
24" x 36"





Pete Schulte

*Arches and Aisles I*  
Graphite, Ink, Pigment, on Paper  
8" x 8"



Bruce Shores

*Remains of a Blue 1*  
Oil  
5" x 6"



Alan Skees

*The Post Apocalypse Studies: Wrecks (Motorcycle)*  
Relief Print, Rubber Based Ink on Rives BFK  
22" x 30"  
Edition of 5





Tyler Starr

*Lover's Leap Downtown (Muscatine, Iowa)*  
Ink, Spray Paint, Japanese Papers  
36" x 51.25"



Andi Steele

*Contrary*  
EMT Conduit, Fittings  
7' x 5' x 9'



Heather Szatmary

12 x 8 = 70  
Laser-etched Baltic Birch  
12" x 24"



Tore Terasi

*Staring Girl* (From the Series *Moments and Vision*)  
Digital Archival Print  
2.5" x 12"





Kathleen Thum

*Splice*  
Acrylic and Graphite on Paper on Panel  
16" x 15"



Michelle Tillander

Coefficient of Reality Series: *Pergola Trace*  
Color Photo, Graphite, Synthetic Paper  
20" x 19"



Aggie Toppins

*It Could All Change So Fast*  
Silkscreen  
12" x 19"





Pamela A. Venz

*Mitt Sjónarhorn: Harpa Tónlistar og Ráðstefnuhús,*  
*Parking Spaces*  
Archival Ink Jet Print  
22" x 33" (Image Size)



Orion Wertz

*Untitled Portrait*  
Oil on Canvas  
27.25" x 24.25"



Brooke White

*The New South—Louisiana*  
Archival Digital Print  
17" x 17"

