

K-12 Proposition 39 Update



Jillian Rich
March 23, 2015



Agenda

Time	Category
1 PM	Welcome and Introductions (All)
1:05 PM	State of Prop 39 Implementation (Jillian)
1:10 PM	New Prop 39 Guidelines: What's changed? <ul style="list-style-type: none">• New online system• Updated Handbook• New energy efficiency measures• New calculators
1:25 PM	PG&E Prop 39 Assistance Programs
1:30 PM	Roundtable and Q&A <ul style="list-style-type: none">• Prop 39 Questions for the CEC or PG&E• Unmet Prop 39 needs in schools• Ideas for IDSM Summit
1:45 PM	Wrap-Up

K-12 Prop 39 Update

**Jillian Rich, Prop 39 Lead
EE Programs**





Prop 39 Update: Overview

2013-14 Fiscal Year

- **\$381 Million** in awards to local educational agencies (LEAs)
- **\$47 Million** in awards to California community college districts
- **\$28 Million** for ECCA-Ed loans and CEC technical assistance
- **\$3 Million** to workforce training
- **\$5 million** for California Conservation Corps

2014-15 Fiscal Year

- **\$279 Million** in awards to local educational agencies (LEAs)
- **\$47 Million** in awards to California community college districts
- **\$28 Million** for ECCA-Ed loans and CEC technical assistance
- **\$3 Million** to workforce training
- **\$5 million** for California Conservation Corps



Prop 39 Update: Application Progress

- Approved K-12 Expenditure Plans (as of 3/1):
 - 340 EEPs submitted for 1,026 sites, totalling \$209M
 - 272 EEPs approved for 864 sites, totaling \$179M
- Citizens Oversight Board (COB) is fully staffed
- The governor's proposed budget for 2015-16 includes \$320M in Prop 39 funds for K-12



Prop 39 Update: Results to Date from the CEC

Prop 39 Program: *Accomplishments*

(as of 3-8-15)

Energy Measure Category	# of Measures Approved	Percentage Approved
Lighting	1696	48%
HVAC	608	17%
HVAC Controls	400	11%
Lighting Controls	326	9%
Plug Loads	216	6%
Pumps, Motors, Drives	93	3%
Generation (PV)	74	2%
Building Envelope	57	2%
Domestic Hot Water	51	1%
TOTAL	3521	

Approved EEPs are projected to reduce energy consumption by:

- 89.2 million kWh
- 615,000 therms
- 31,000 gallons of propane
- 6,000 gallons of fuel oil

Source: CEC 2015



Prop 39 Update: CCC and Bright Schools

California Conservation Corps (CCC)

- CCC Audits have had up to a year-long wait time. No new applications are being accepted.
- CCC crews are now tablet-ready, which will increase data accuracy and comprehensiveness once program is reopened



Bright Schools

- Bright Schools also has a waiting list
- New Vendor – Digital Energy. kW Engineering is no longer working
- Received 180 applications
- Digital Energy is contacting waiting list in groups of 30



Prop 39 Update: New Elements as of 2/27/2015

DRAFT GUIDELINES

PROPOSITION 39: CALIFORNIA
CLEAN ENERGY JOBS ACT - 2015
PROGRAM IMPLEMENTATION
GUIDELINES



CALIFORNIA
ENERGY COMMISSION
Edmund G. Brown Jr., Governor

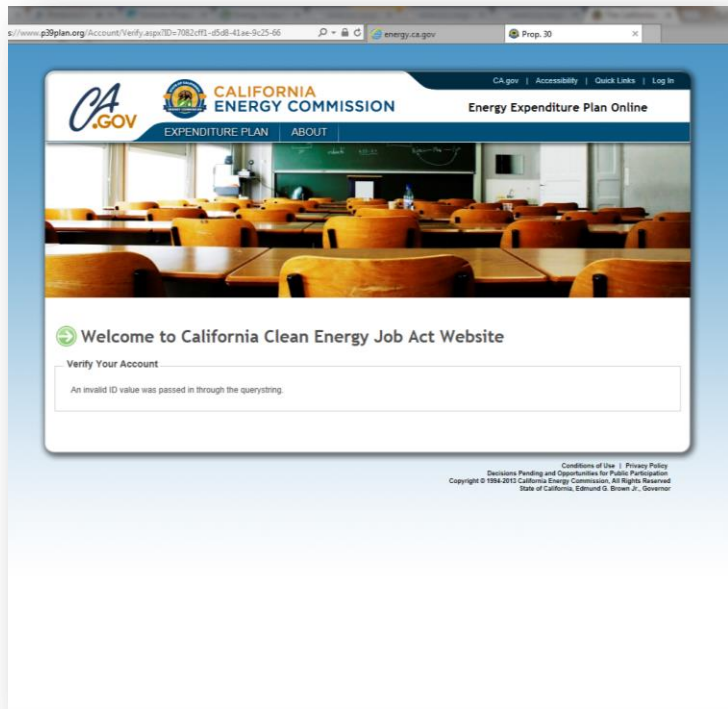
DECEMBER 2014
CEC-400-2014-022-D-REV2

Four major changes:

1. New Online System
2. Savings to investment ratio (SIR) calculation changes
3. Additional energy efficiency measures added to eligibility list
4. New data release form



Update #1: New Online EEP System



- Mirrors the format of the previous application forms, Form A and B
- Larger LEAs (>\$2M per year) can submit up to three EEPs per fiscal year
- Schools should have received a welcome email with login instructions.
- If not, please ask them to email the Prop 39 Hotline at prop39@energy.ca.gov



Update #1: New Online EEP System

- The CEC will host in-depth, 3.5-hr trainings on the new online system in late March and April.
- Schedule:
http://www.energy.ca.gov/efficiency/proposition39/documents/LEA_training_seminars_schedule.pdf
- Trainings:
 - March 24th: Sacramento
 - March 25th: Statewide Webinar
 - April 7th: Hayward
 - April 21st: Eureka
 - April 22nd: Redding
 - April 28th: Fresno
 - April 29th: Bakersfield



Update #2: Savings to Investment Ratio

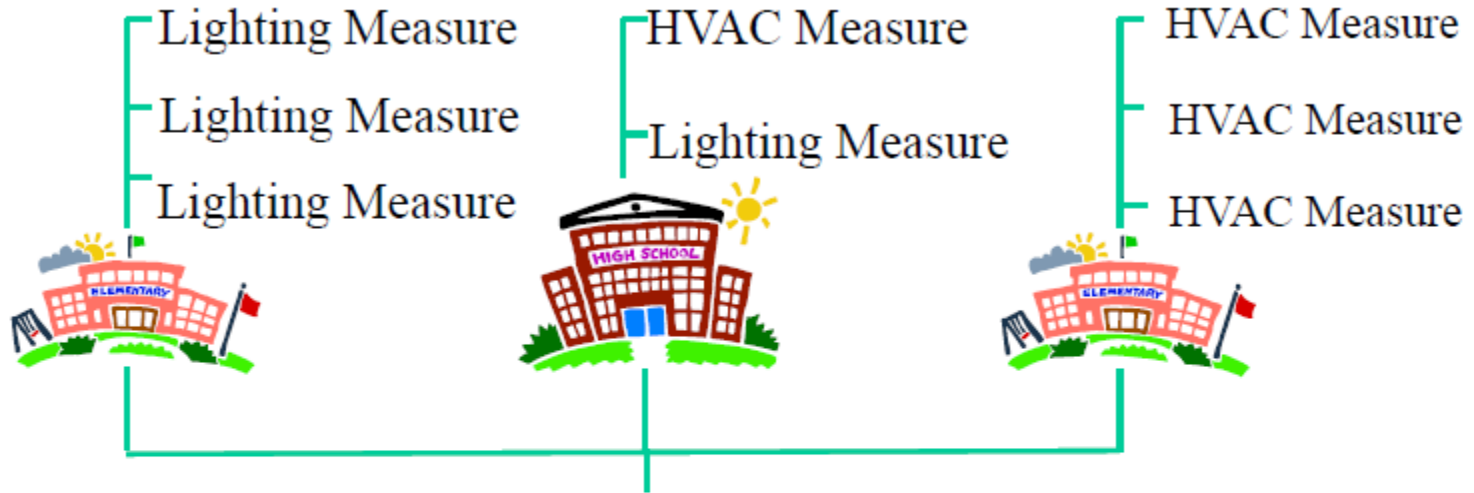
$$\text{SIR} = \geq 1.05 = \frac{\text{Net Present Value of Savings}}{\text{Project Installation Cost}}$$

Changes:

- SIR calculated at the local education agency (LEA) level, not at the site level.
 - The only exception is if the LEA has >\$1M award in any one fiscal year. That LEA must have one “large eligible energy project” that costs >\$250K and meets the SIR requirement at the site-level
- Project Installation Cost (denominator) can be reduced with bond funding, general operation budgets, deferred maintenance, and other “non-repayable” funds, in addition to utility incentives.
- New SIR alternative for Zero Net Energy LEAs



Update #2: Savings to Investment Ratio



**Total LEA Bundled Saving to Investment ratio
(SIR) = 1.05**

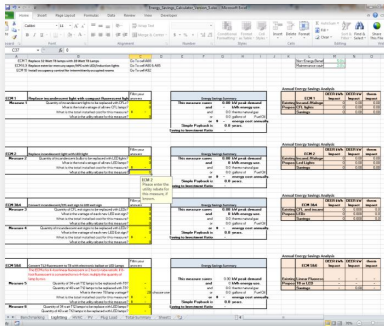
Source: CEC
2015



Update #3: Additional EE Measures

As a reminder, there are two alternatives to substantiate a “project” to the CEC:

1) Excel-based Statewide Calculator
Allows LEAs to calculate savings and costs with no additional substantiation for common types of eligible measures

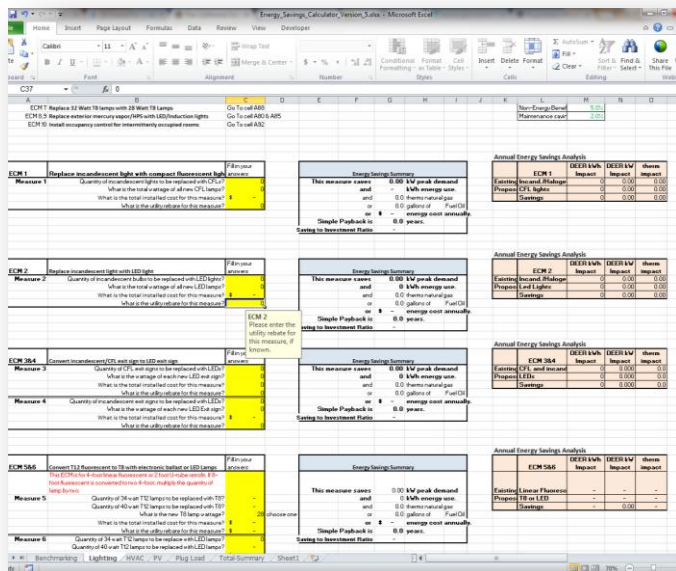


2) Qualifying Energy Audit
See Chapter 5 of the Prop 39 Guidelines for what makes a “qualified” audit and/or the CDE’s current audit guide booklet:
<http://eaap.ca.gov/audit-guide/current-audit-guide-booklet/>



Update #3: Additional EE Measures, Cont.

1) Excel-based Statewide Calculator



Calculators:

- **Lighting:** LEDs (new!), CFLs, T8s, occupancy sensors
- **HVAC:** Heat pumps, boilers, furnaces, duct repair, VFD, thermostats, motors, water heaters
- **Plug Load:** Smart strips, PC power management, vending misers
- **PV:** Solar PV

New! Energy savings adjusted to building consumption, especially for lighting



Update #3: Additional EE Measures, cont.

All Eligible Measure List (Note: Not all are available in the calculator; Some require a qualified energy audit as substantiation) – New measures in yellow

Energy Efficiency Measure	Existing	New	Modified/ Re- Phrased
1. Lighting – Interior Fixture Retrofit	X		
2. Lighting – Exterior Fixture Retrofit	X		
3. Lighting – Interior Linear Fluorescent Relamping			X
4. Lighting – LED Exit Signs	X		
5. Lighting – Retrofit Incandescent to LED	X		
6. Lighting – CFL Lamp Retrofit		X	
7. Lighting Controls	X		



Update #3: Additional EE Measures, cont.

Energy Efficiency Measure	Existing	New	Modified/ Re-Phrased
8. HVAC – Packaged/Split Replacement	X		
9. HVAC – Room/Window AC		X	
10. HVAC – Evaporative Cooler			X
11. HVAC – HVAC and Air Handler Repairs	X		
12. HVAC – New Economizer	X		
13. HVAC – Chiller/Boiler Replacement	X		
14. HVAC – Condensing Furnace	X		
15. HVAC – VAV System	X		
16. HVAC – Duct Sealing	X		



Update #3: Additional EE Measures, cont.

Energy Efficiency Measure	Existing	New	Modified/ Re-Phrased
17. HVAC – Cooling Towers		X	
18. HVAC – Steam Traps		X	
19. HVAC – Retrocommissioning (Continuous)	X		
20. HVAC Controls – Programmable/Smart Thermostats			X
21. HVAC Controls – Energy Management System	X		
22. HVAC Controls – Chiller Controls Upgrade	X		



Update #3: Additional EE Measures, cont.

Energy Efficiency Measure	Existing	New	Modified/ Re-Phrased
23. Building Envelope – Windows/Skylights	X		
24. Building Envelope – Cool Roofs	X		
25. Building Envelope – Insulation	X		
26. Building Envelope – Shading Devices/Window Film	X		
27. Pumps, Motors, Drives – Premium Efficiency Motors			X
28. Pumps, Motors, Drives – Energy Efficient Pumps			X
29. Pumps, Motors, Drives – Variable Frequency Drives			X



Update #3: Additional EE Measures, cont.

Energy Efficiency Measure	Existing	New	Modified/ Re- Phrased
30. DHW – Domestic Hot Water Heater	X		
31. DHW – Waste Heat Recovery		X	
32. DHW – Solar Water Heating		X	
33. DHW – Water Tank/Pipe Insulation		X	
34. Pool – Swimming Pool Cover		X	
35. Kitchen – High Efficiency Appliances		X	
36. Kitchen – Strip Curtain/Auto Closer		X	



Update #3: Additional EE Measures, cont.

Energy Efficiency Measure	Existing	New	Modified/ Re-Phrased
37. Irrigation – Irrigation Pump Control		X	
38. Irrigation – High Efficiency Sprinkler		X	
39. Energy Storage – Advanced Battery Storage		X	
40. Electrical – High Efficiency Transformer		X	
41. Plug Loads – Power Management	X		
42. Plug Loads – Vending Machine Misers	X		
43. Generation – Solar Photovoltaic	X		



Update #3: Additional EE Measures

Spread the word!

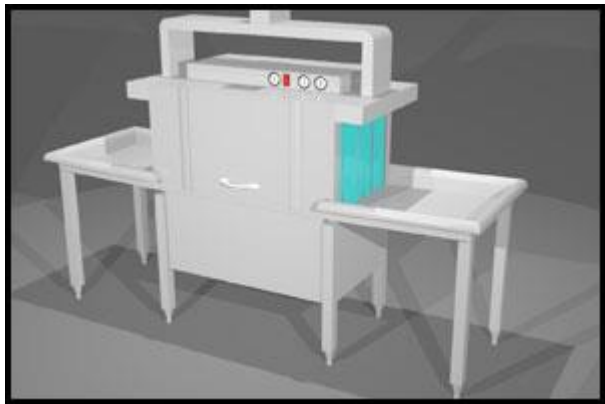
Prop 39 Webinar: Kitchen Equipment Technologies & Utility Rebates

Tuesday, April 21st 11 AM – 12 PM

Now that kitchen equipment is eligible for Prop 39, come learn from the Food Service Technology Center about available technologies, energy savings, and utility incentives.

Register here:

<https://pge.webex.com/pge/j.php?J=740372859>



Essentials for Prop 39





Getting Started

California Department of EDUCATION

Proposition 39 California Clean Energy Jobs Act

A state program providing funding to local educational agencies for improving energy efficiency and creating clean energy jobs.

Funding

Fiscal Year 2014-15

[Proposition 39 - 2014 Funding Profile - Program Description and Funding](#)

[Proposition 39 - 2014 Funding Results - Entitlements, Apportionments, and Letters](#)

Fiscal Year 2013-14

[Proposition 39 - 2013 Funding Profile - Program Description and Funding](#)

[Proposition 39 - 2013 Funding Results - Entitlements, Apportionments, and Letters](#)

Other Fiscal Information

Application Information

[2014-15 Proposition 39 - California Clean Energy Jobs Act Request for Applications](#)
Information on the following two applications:

- Request for Two Years of Proposition 39 Funding for LEAs with 1,000 or Less ADA
- Request for Energy Planning Funds (coming Fall 2014)

[2013-14 Proposition 39 - California Clean Energy Jobs Act Request for Applications](#)
The due date for these applications has passed.

Guidelines

[Final Proposition 39 Guidelines \(Adopted December 19, 2013\)](#)

Frequently Asked Questions (FAQ)

Frequently Asked Questions Regarding Proposition 39 (coming soon)

Legal References

Public Resources Code sections [26200-26201](#), [26205-26208](#), [26210](#), [26220](#), [26225-26240](#)
Senate Bill 73 (Chapter 29) [\(PDF\)](#)

Step 1: See what you're working with. Look up the LEA's Prop 39 allocation here: <http://www.cde.ca.gov/fg/aa/ca/prop39ccejaa.asp>.

What to look for:

- Fiscal Year 2013-14: How much funding do you have? Did you request planning funds for activities like audits, benchmarking, and technical assistance? If so, how much?
- Fiscal Year 2014-15: How much funding do you have? Note: Smaller LEAs had the option of requesting two years of funding in 2013-14, so the answer may be \$0 additional dollars in 2014-15.



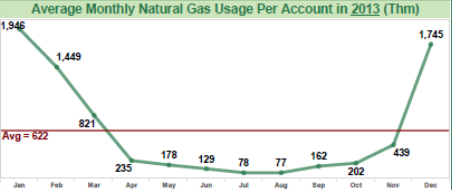
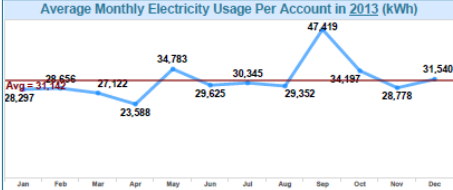
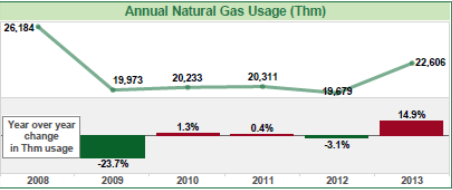
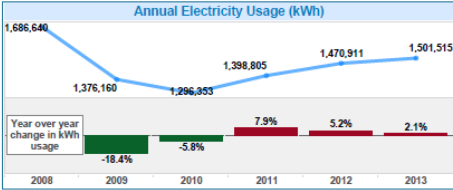
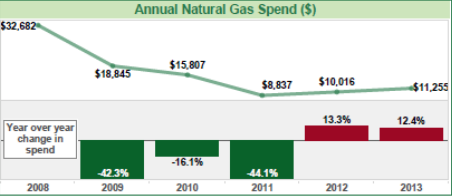
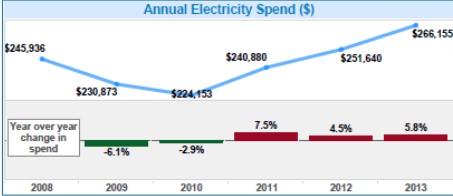
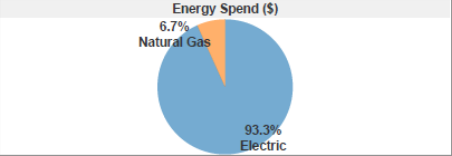
Getting Started

CHOO DISTRICT Energy Summary 2008-2013



Produced by PG&E Customer Energy Solutions - Contact SchoolsSupport@pge.com

3 Total Schools
 \$277,410 Total Energy Cost For the District In 2013
 \$23,117 Average Monthly Energy Cost In 2013
 3 Schools Participated In PG&E Energy Efficiency Programs
 \$18,899 PG&E Incentives from 2008-2013
 2 Schools Enrolled In Demand Response Programs
 0 Schools Have Solar Installations
 0 Schools Have Been Audited



Step 2: Look at your Data. Your account manager can provide you with colorful summaries like the one shown to gain insights into how you use energy across campuses.



Getting Started



SAVING SCHOOLS ENERGY & MONEY WITH A PROP 39 BONUS

Up to \$20,000 subsidy available for Prop 39 Services

The School Energy Efficiency (SEE) Program, one of Pacific Gas and Electric Company's (PG&E) Third Party efficiency programs administered by CLEAResult, offers substantial opportunities to help school districts save energy and money. CLEAResult understands the opportunities and barriers for energy upgrades in schools, and has partnered with PG&E to offer a Prop 39 SEE Bonus to school districts throughout PG&E's service territory.

The Prop 39 SEE Bonus

Together, PG&E and CLEAResult are offering school districts a sensible way to save energy and money. The Prop 39 SEE Bonus (Bonus) is a limited time program offering to encourage SEE participants to submit a comprehensive Prop 39 Energy Expenditure Plan (EEP) before funds are depleted. The Bonus will help offset the cost of the EEP by subsidizing services for EEP development and submittal. Districts may apply these services to any portion of their plan developments and allow the SEE Team to act as a Resource Coordinator.

Services include but are not limited to:

- Benchmarking
- Analysis of historical SmartMeter™ data
- Building energy assessments or audits
- Project/measure prioritization and sequencing
- Savings-to-Investment Ratio (SIR) calculations
- EEP development and submittal
- Identifying applicable utility incentives to reduce costs

Step 3: Learn about assistance programs. In addition to the statewide programs, PG&E offers assistance for Prop 39 planning, including:

- School Energy Efficiency (SEE) Prop 39 Bonus Program
- Energize Schools Program
- Large Integrated Audits
- Government and Community Partnerships



Getting Started

PROPOSITION 39 BULLETIN
Q1 2015 – JANUARY EDITION

Stretch Your Prop 39 Dollars Further
Find rebates and incentives for K-12 schools. For more information, please visit our website at pge.com/schools.

Prop 39 Guidelines Update
What You Need to Know
The New Year is bringing changes to the Proposition 39 application process. The California Energy Commission adopted a new set of guidelines on December 10, 2014. Changes include a new savings-to-investment ratio definition, new solar PPA guidance, and the incorporation of bond funding into cost effectiveness calculations. [Click here](#) for a summary of the changes.

Important Guidance
Prop 39 Utility Data Release Form
The California Energy Commission (CEC) requires K-12 Prop 39 applicants to submit a [Prop 39 Data Authorization Form](#) to utilities like PG&E as well as the CEC as part of the expenditure plan application. Please visit our schools

GET STARTED
▶ Contact us through your account representative at 800-468-4743 or via email: schools@pge.com

QUESTIONS
▶ We have answers and we're here to help. [FAQs](#)

AT-A-GLANCE

Step 4: Stay Connected

Sign them up for our new Prop 39 Quarterly Bulletin

Email schools@pge.com

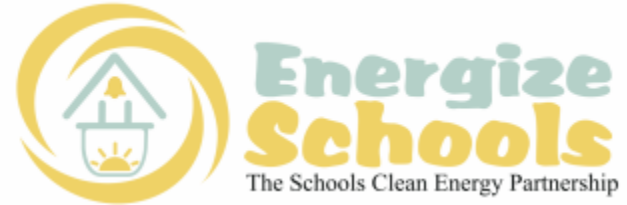


Proposition 39 Planning Offerings

SEE School Energy
Efficiency Program

Bonus Program

- Up to \$15,000 in in-kind services for Tier 1 and 2 Schools
- Up to \$20,000 in in-kind services for Tier 3 and 4 schools with a copay



- Up to \$15,000 in in-kind services for Tier 1-4 Schools
- Educational component including teacher training and curriculum

No cost planning services include: Benchmarking, Auditing, and Expenditure Plan Development

Limited time offering; Only Available in Select Areas on a First-Come First-Served Basis



Application/Project Reminders

Expedited Parallel Review for Custom Projects

- CPUC will select and review custom energy efficiency project applications in half the normal time
- True for *all* school projects (private and public)
- Reminder: Make sure the school is properly categorized as such in your parallel review submissions

Equipment Pre-Orders

- Prop 39 custom projects may proceed with equipment pre-orders without signed agreement with PG&E for an energy efficiency incentive



Application/Project Reminders, Cont.

Early Retirement: Expanded Project Eligibility for Schools

- For projects implemented in 2015, please note that the CPUC will permit up to a 30-year maximum useful life for removed equipment (as opposed to the usual 20 year life). This holds true for *all* school projects, including private and public K-12 school projects. Please note that the 30-year maximum useful life is only applicable to removed equipment for the purposes of determining early retirement eligibility; the new equipment useful life is not impacted. The goal of this change is to encourage the removal of old but still-functioning equipment in schools while Prop 39 funding is available for that purpose. For more background, please see Decision pages 67-68 here: <http://docs.cpuc.ca.gov/PublishedDocs/Published/G000/M129/K228/129228024.pdf>.



PG&E Prop 39 Resources for Customers

View this email as a [web page](#).



PROPOSITION 39 BULLETIN

Q1 2015 – JANUARY EDITION



Stretch Your Prop 39 Dollars Further

Find rebates and incentives for K-12 schools. For more information, please visit our website at pge.com/schools.

Prop 39 Guidelines Update

What You Need to Know

The New Year is bringing changes to the Proposition 39 application process. The California Energy Commission adopted a new set of guidelines on December 10, 2014. Changes include a new savings-to-investment ratio definition, new solar PPA guidance, and the incorporation of bond funding into cost effectiveness calculations. [Click here](#) for a summary of the changes.

Important Guidance

Prop 39 Utility Data Release Form

The California Energy Commission (CEC) requires K-12 Prop 39 applicants to submit a [Prop 39 Data Authorization Form](#) to utilities like PG&E as well as the CEC as part of the expenditure plan application. Please visit our schools website at www.pge.com/schools to find out how to correctly complete and submit this form.

New Energy Benchmarking

GET STARTED

- ▶ Contact us through your account representative at 800-468-4743 or via email: schools@pge.com

QUESTIONS

- ▶ We have answers and we're here to help. [FAQs](#)



AT-A-GLANCE

- Prop 39 Bulletins



PG&E Prop 39 Resources for Customers

The screenshot shows the PG&E website header with navigation links: "For My Business", "About", "Contact Us", "Safety", and "English". A search bar and "Log in" link are also present. Below the header is a menu with "Your Bill & Account", "Save Money", "Rates", and "Services". A left sidebar lists various programs like "Rebates & Incentives" and "Energy Management Programs". The main content area features a "Money Back Solutions: Schools - Pre-K to 12" section with a photo of diverse children and a "Choose your business type" dropdown menu.

Managing energy costs is an important lesson to learn

Every year California schools spend around \$700 million on energy—that's about the same amount spent annually on school supplies. Our rebates, incentives and expert advice can make it easier to get money-saving energy management projects approved and implemented.

Find rebates and incentives for Schools through our Money Back Tool or K-12 Schools Rebate Catalog.

Resources for Proposition 39

The California Clean Energy Jobs Act (Prop 39) provides up to \$500 Million per year to improve energy efficiency and clean energy in public schools. PG&E offers incentives and rebates for energy efficient technologies that can help stretch Prop 39 dollars further and meet cost effectiveness requirements. Find out the ways in which PG&E can help with the Prop 39 application and implementation process. [Learn More »](#)

***Updated* Data Authorization Form.** The California Energy Commission (CEC) requires K-12 Prop 39 applicants to submit a [Prop 39 Data Authorization Form](#) to the CEC and to each utility. This form authorizes PG&E to provide the CEC with school energy consumption data directly. If you are a PG&E electricity or natural gas customer,

Have a Question or Need Help?

[Contact Our Schools Mailbox »](#)

Schools Bulletin

Check out the Prop 39 Schools Bulletin and sign up to receive the next edition. [View Now »](#)

Prop 39 Quick Links

- [Schools Fact Sheet](#)
- [Proposition 39 May Bulletin](#)
- [Proposition 39 Webinar Presentation](#)
- [Archived Bulletins](#)

- www.pge.com/schools
- Schools@pge.com



Student Education



The Energenius® Program



www.pge.com/energenius



Student Education

If you get cold and need some heat,
put some warm socks on your feet.

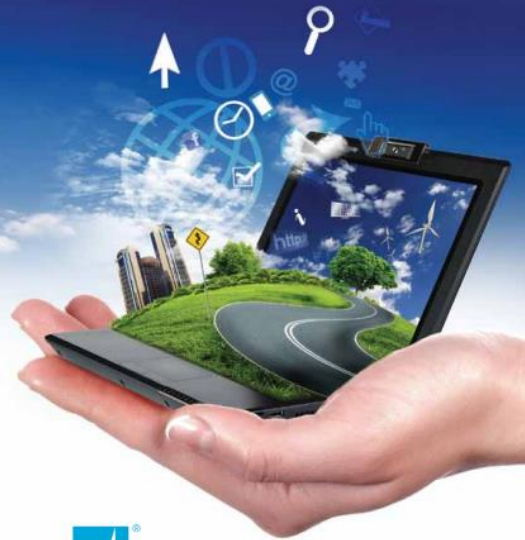


What does Energenius say?
We saved energy today!

5

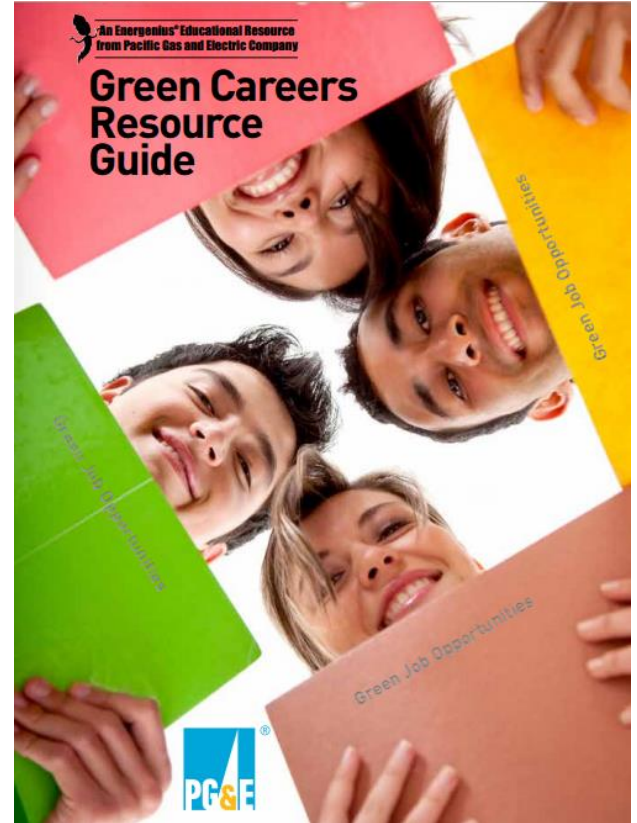
An Energenius® Educational Resource
from Pacific Gas and Electric Company

Online Energy Resources for Educators



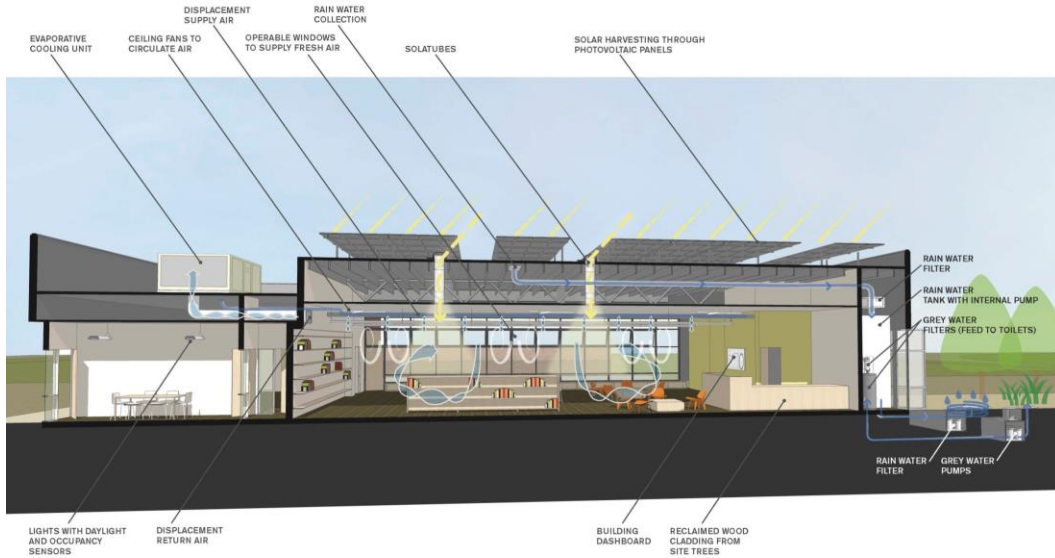
An Energenius® Educational Resource
from Pacific Gas and Electric Company

Green Careers Resource Guide





PG&E Prop 39 Zero Net Energy Pilot



- Small proof-of-concept Pilot for 5-8 schools in PG&E territory, 13-18 statewide
- Existing building retrofits
- Design assistance, commissioning, equipment buy-down, monitoring
- Training and outreach
- Begins in 2015 and ends in 2019
- Schools selected in spring 2015

Thank you!



Jillian Rich