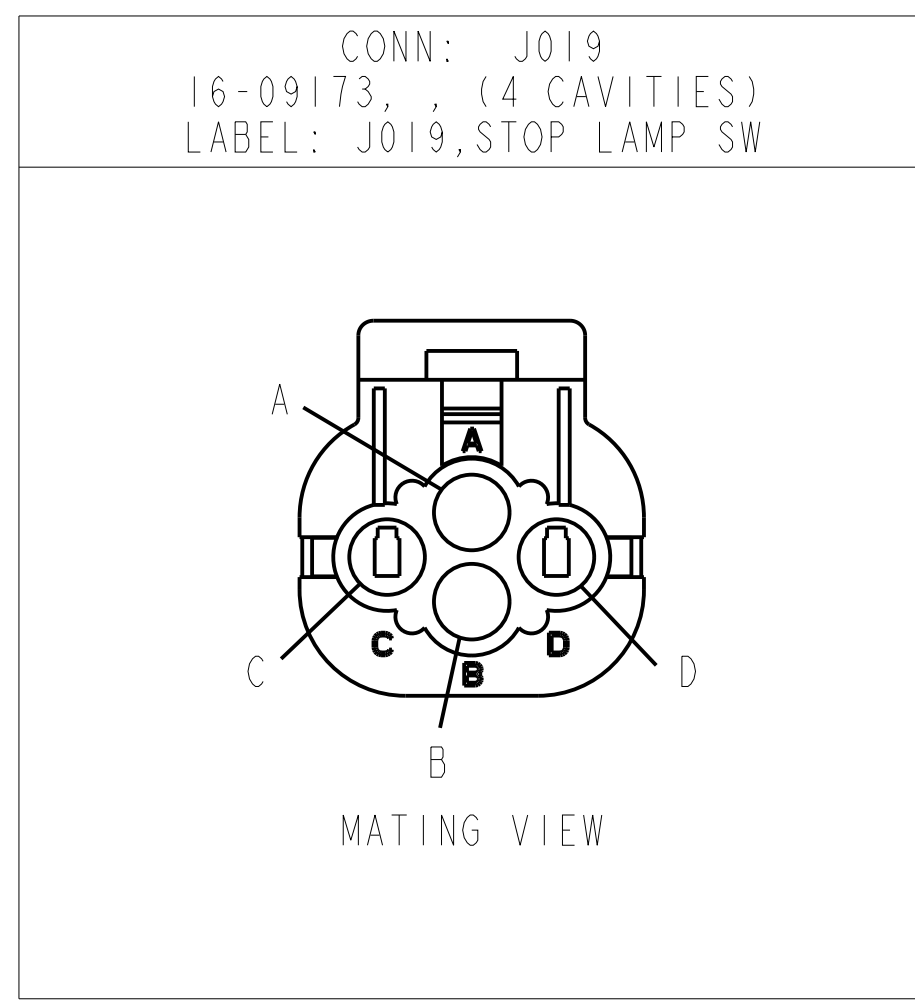
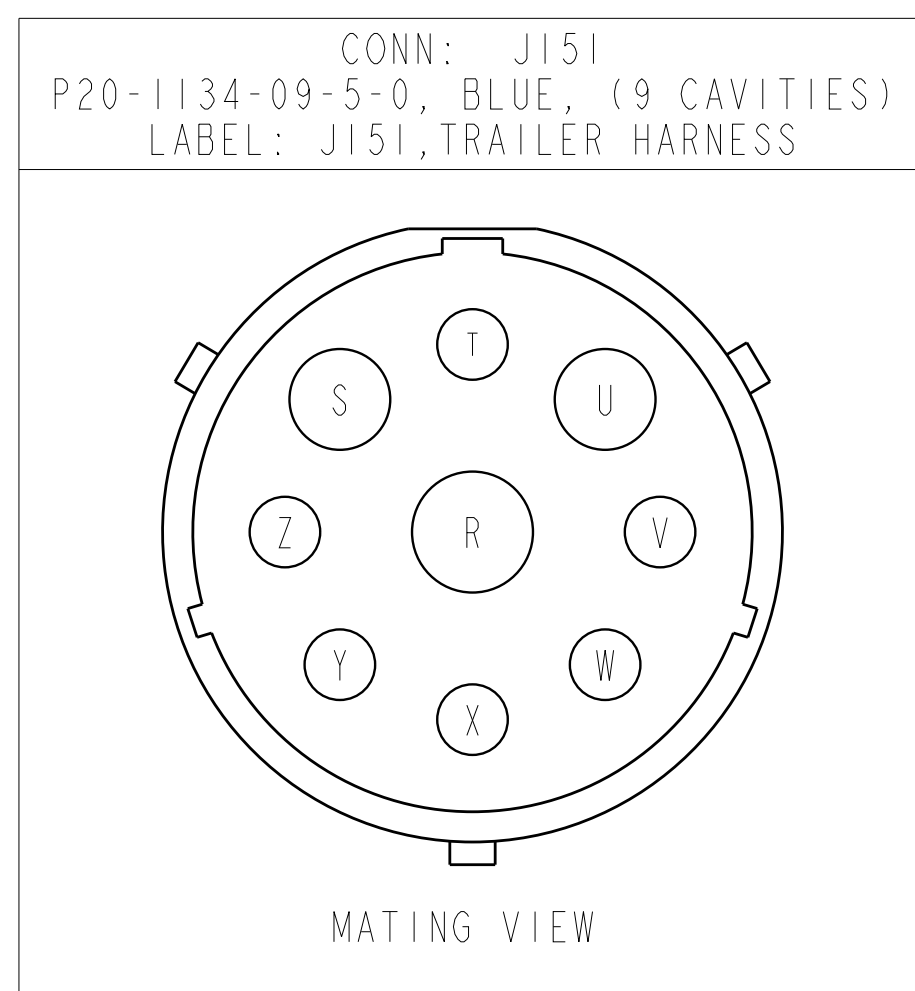


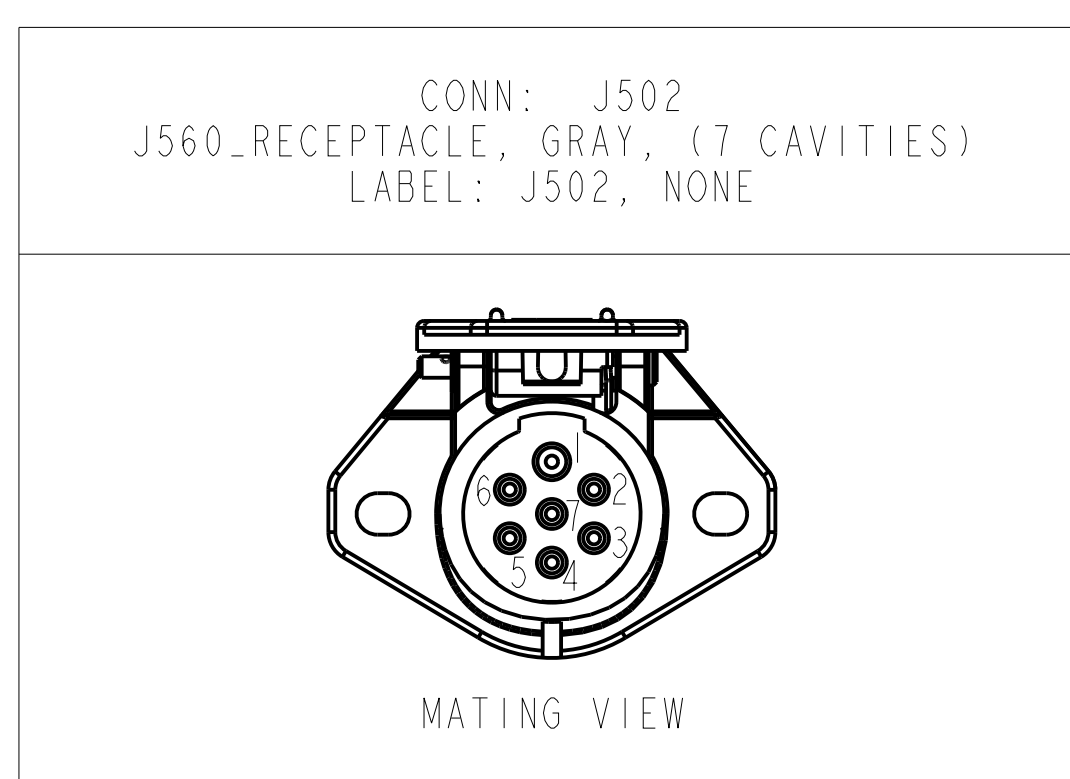
1.5 CIRCUIT POSITION CHART:



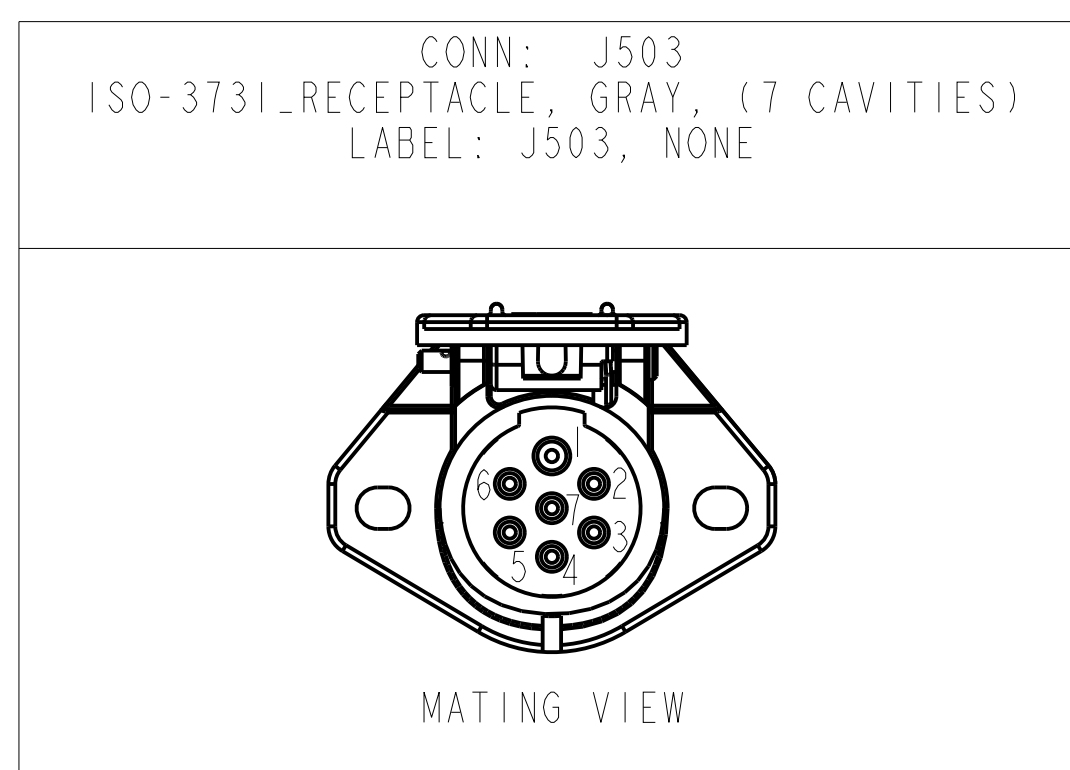
1.6 CIRCUIT POSITION CHART:



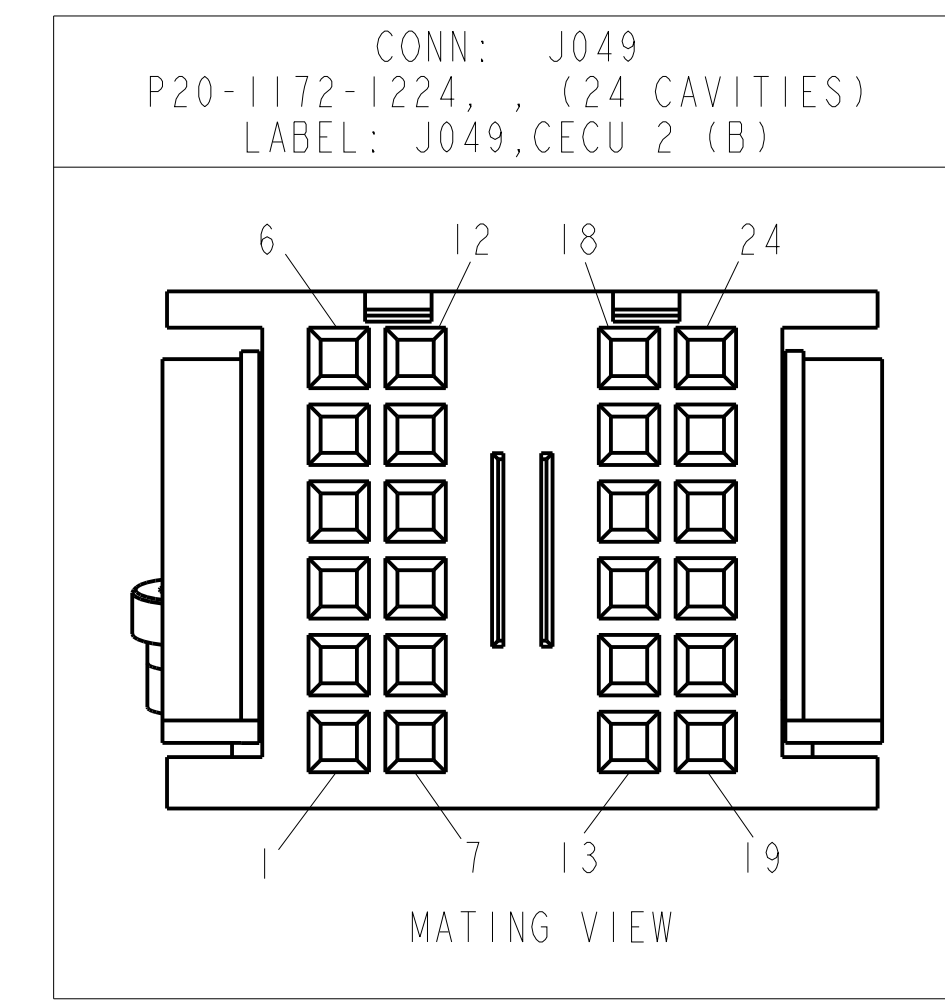
1.7 CIRCUIT POSITION CHART:



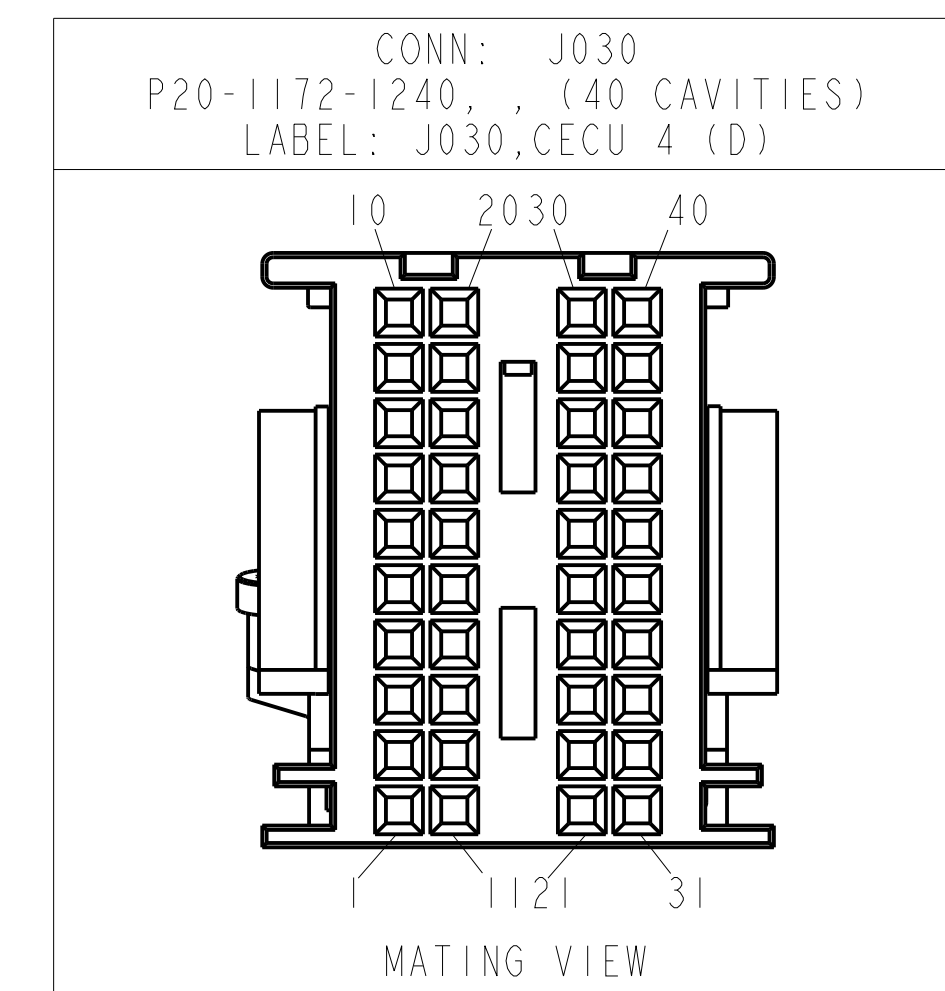
1.8 CIRCUIT POSITION CHART:



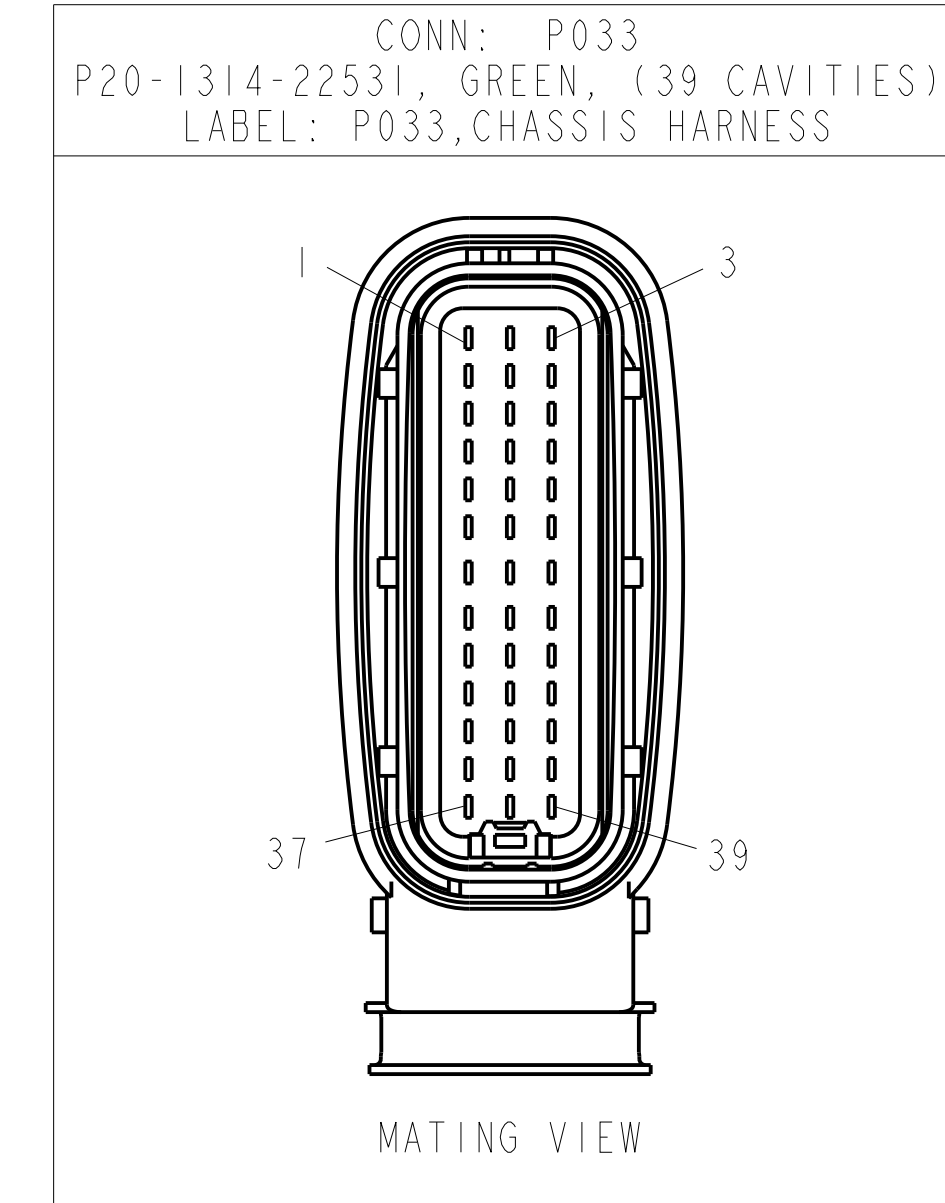
1.9 CIRCUIT POSITION CHART:



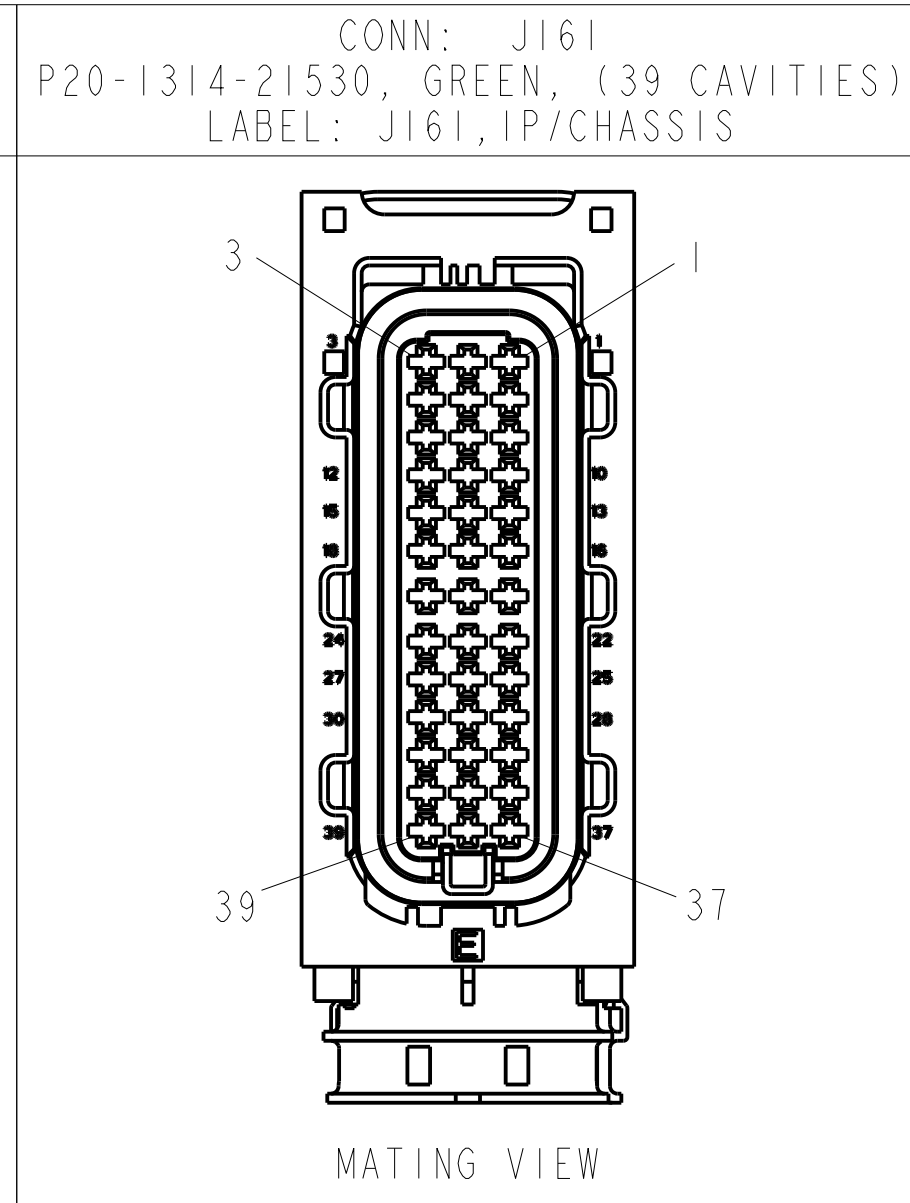
1.10 CIRCUIT POSITION CHART:



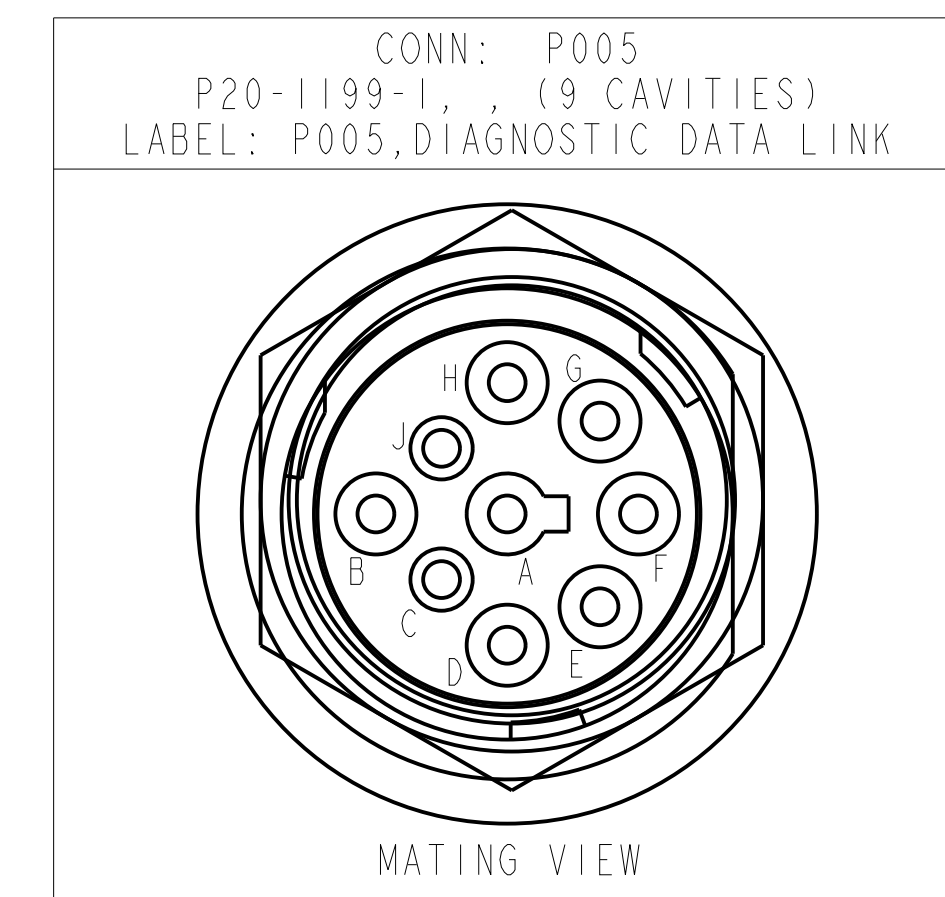
1.11 CIRCUIT POSITION CHART:



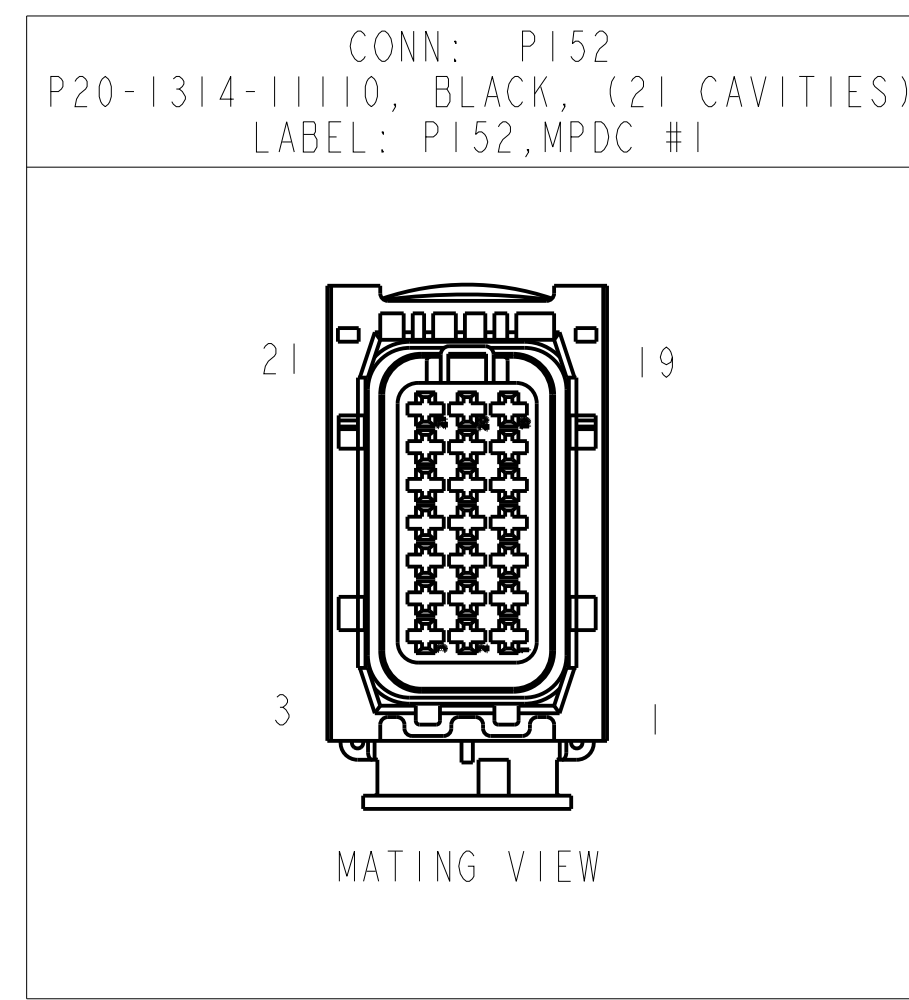
1.12 CIRCUIT POSITION CHART:



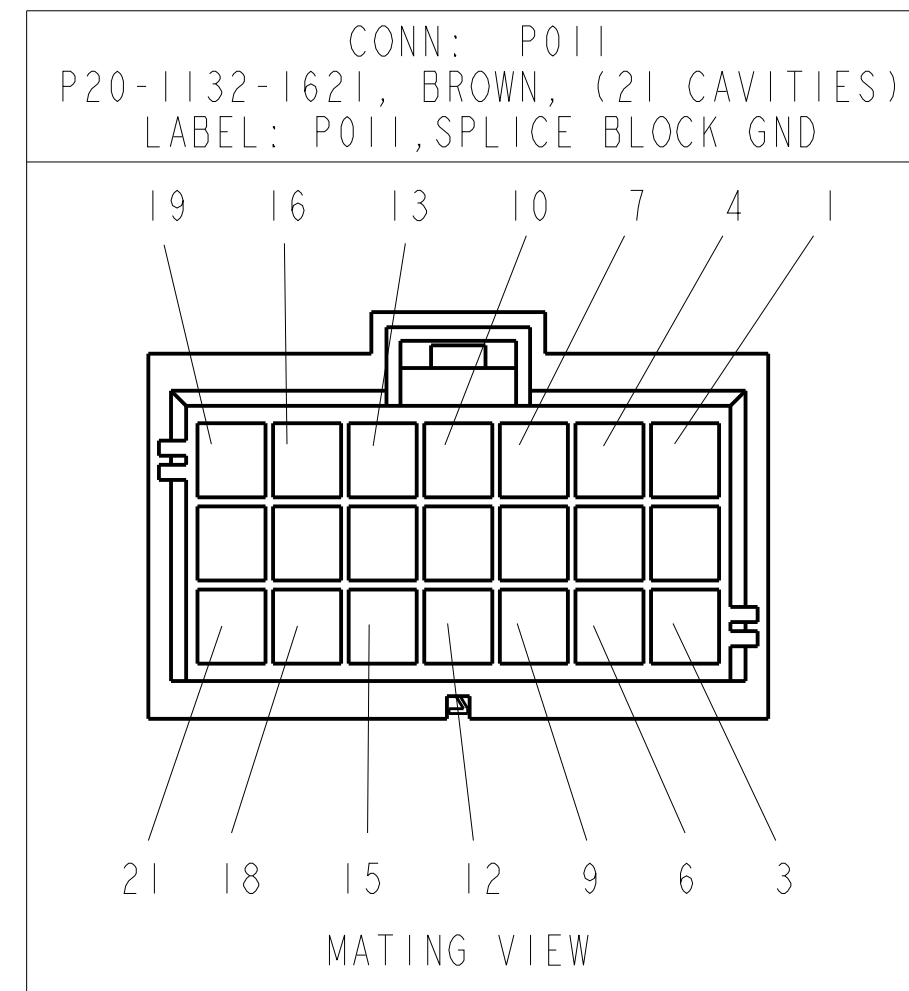
1.13 CIRCUIT POSITION CHART:



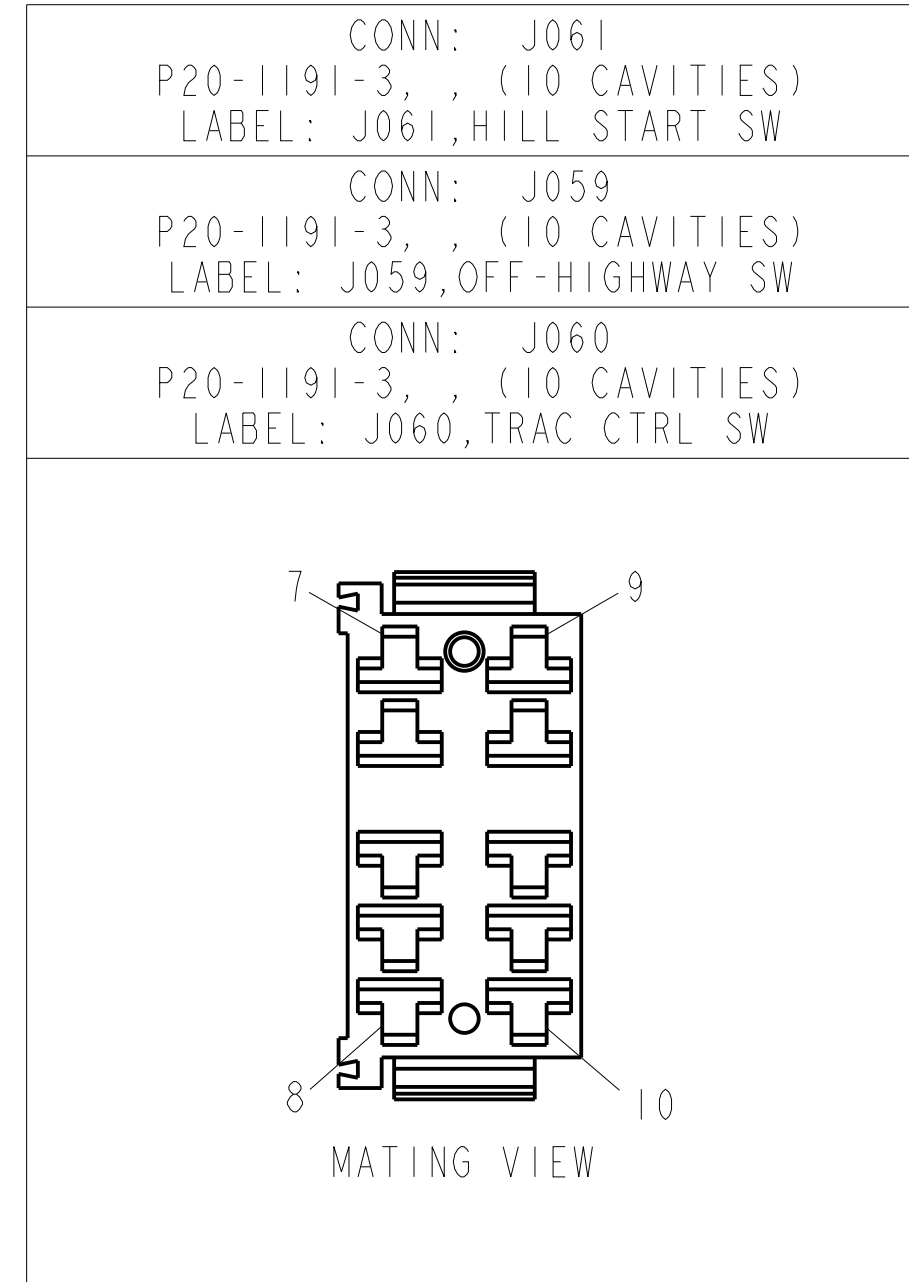
1.14 CIRCUIT POSITION CHART:



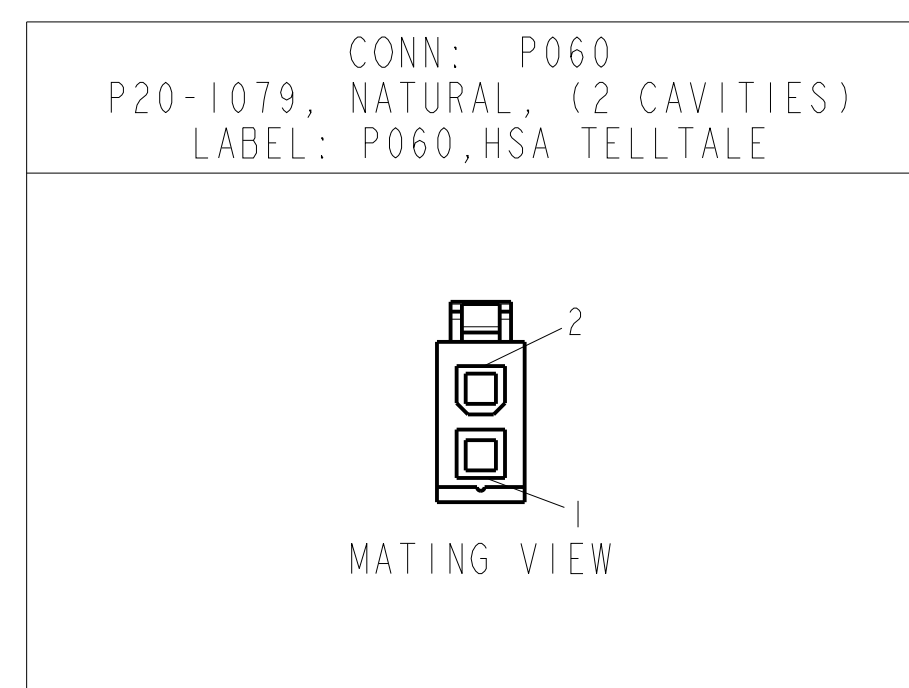
1.15 CIRCUIT POSITION CHART:



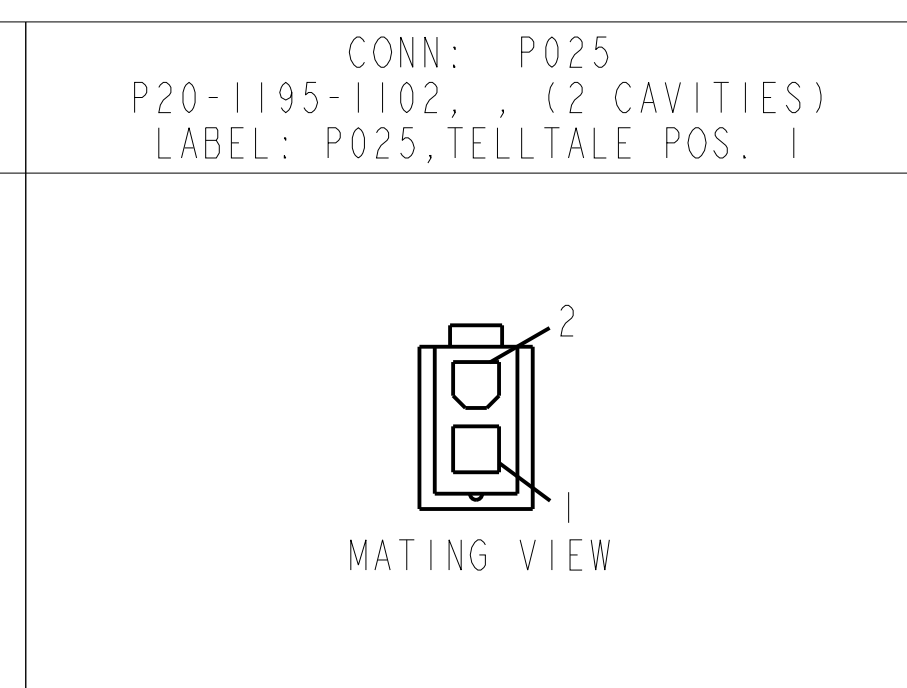
1.16 CIRCUIT POSITION CHART:



1.17 CIRCUIT POSITION CHART:



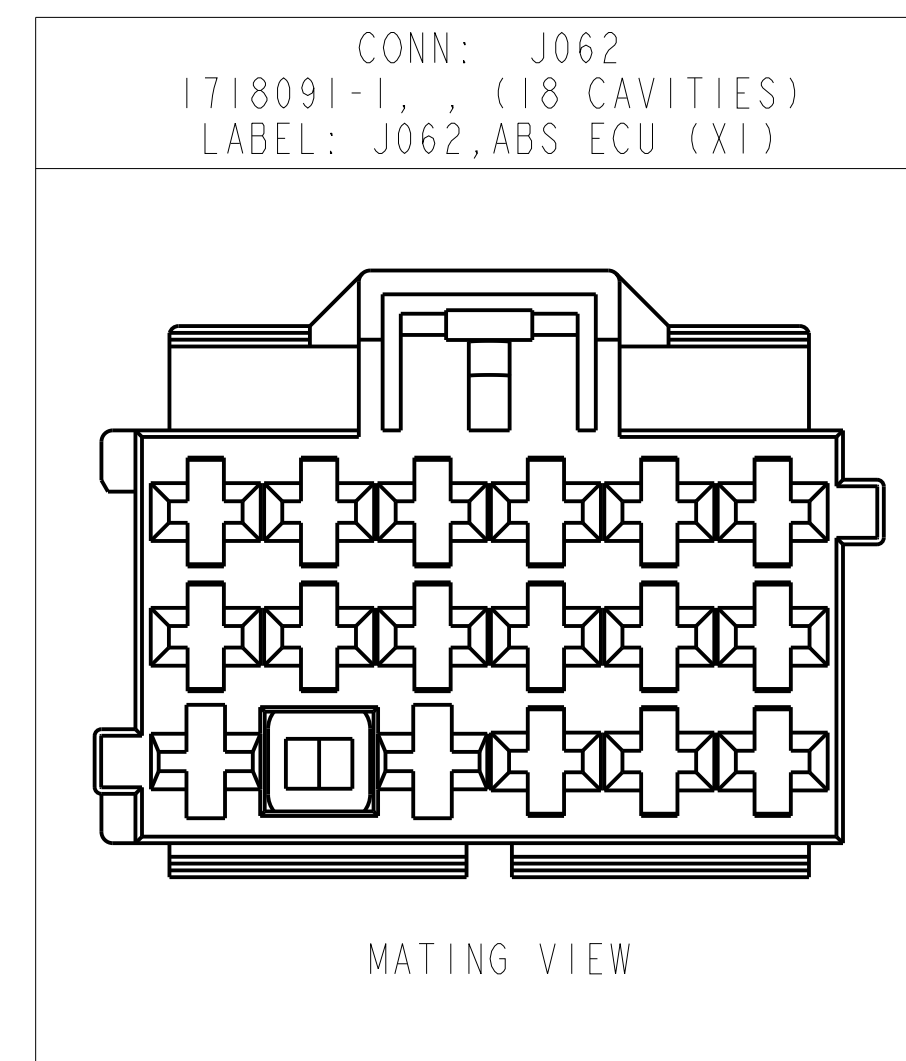
1.18 CIRCUIT POSITION CHART:



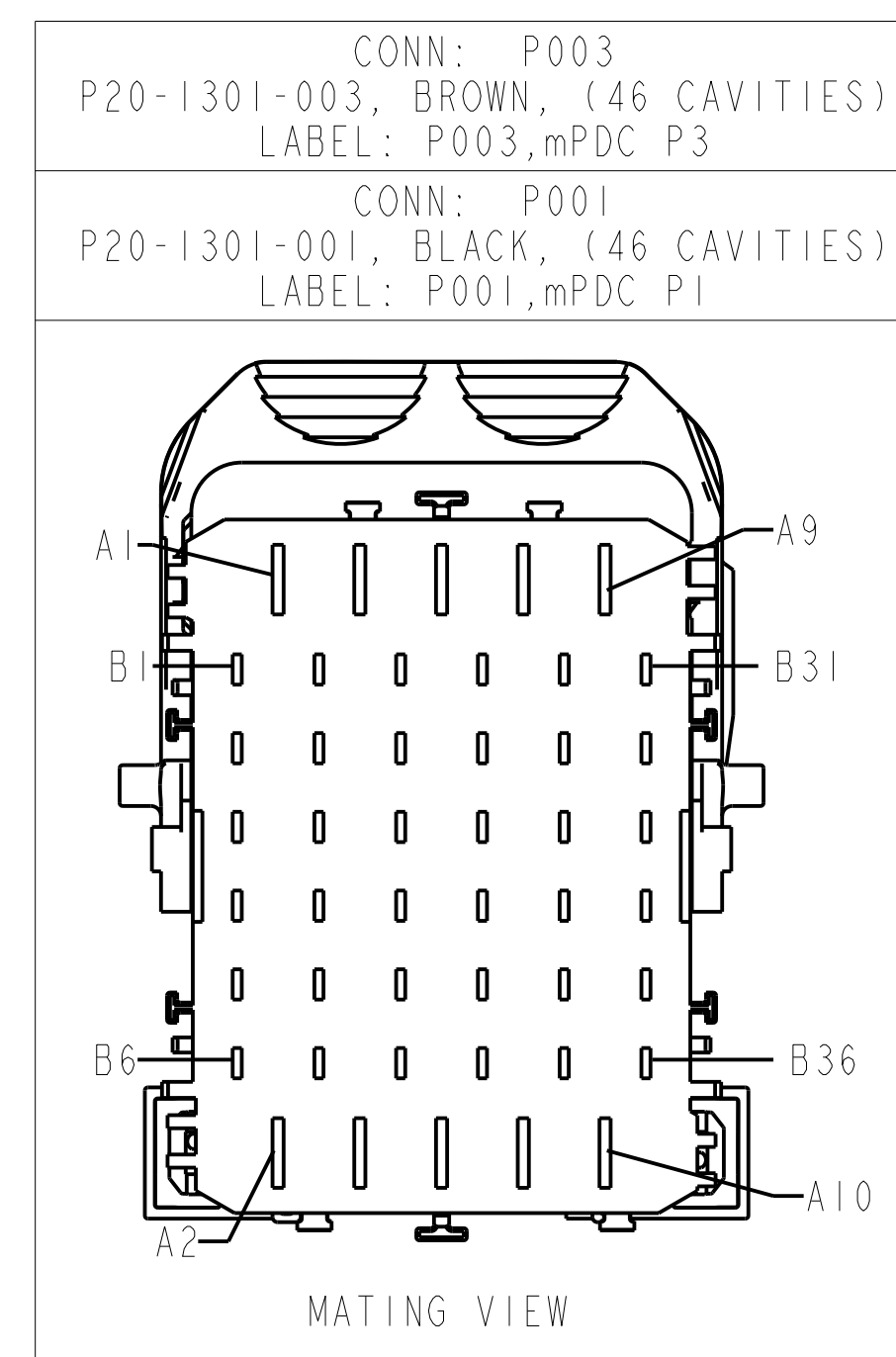
GENERAL NOTES:

- USE ON NGP TRUCKS WITH BENDIX ABS SYSTEM.
- HOW TO USE THIS DIAGRAM:
EACH CONNECTOR HAS A DISTINCT ALPHANUMERIC "REFERENCE DESIGNATOR" OR "REF DES" ASSOCIATED WITH IT. USE THE REF DES TO FIND CONNECTOR INFORMATION IN THE CONNECTOR INFORMATION TABLE.
- LEGEND:
 - Denotes "TWISTED PAIR" OF WIRES.
 - Denotes "TWISTED PAIR" OF JACKETED WIRES.
 - Denotes "TWISTED TRIPLET" OF WIRES.
 - Denotes "TWISTED QUADRUPLLET" OF WIRES.
- DESIGNATES A REFERENCE POINT ON ANOTHER SHEET OR DETAIL.

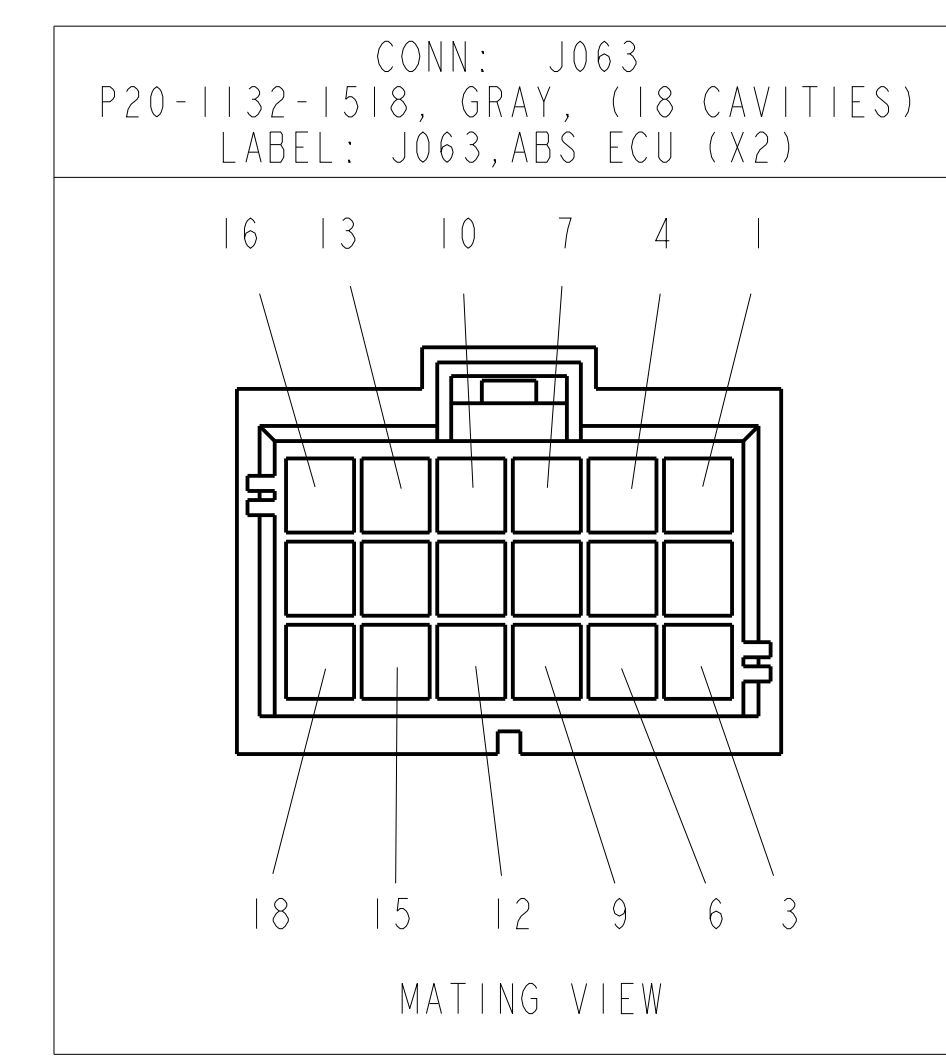
1.19 CIRCUIT POSITION CHART:



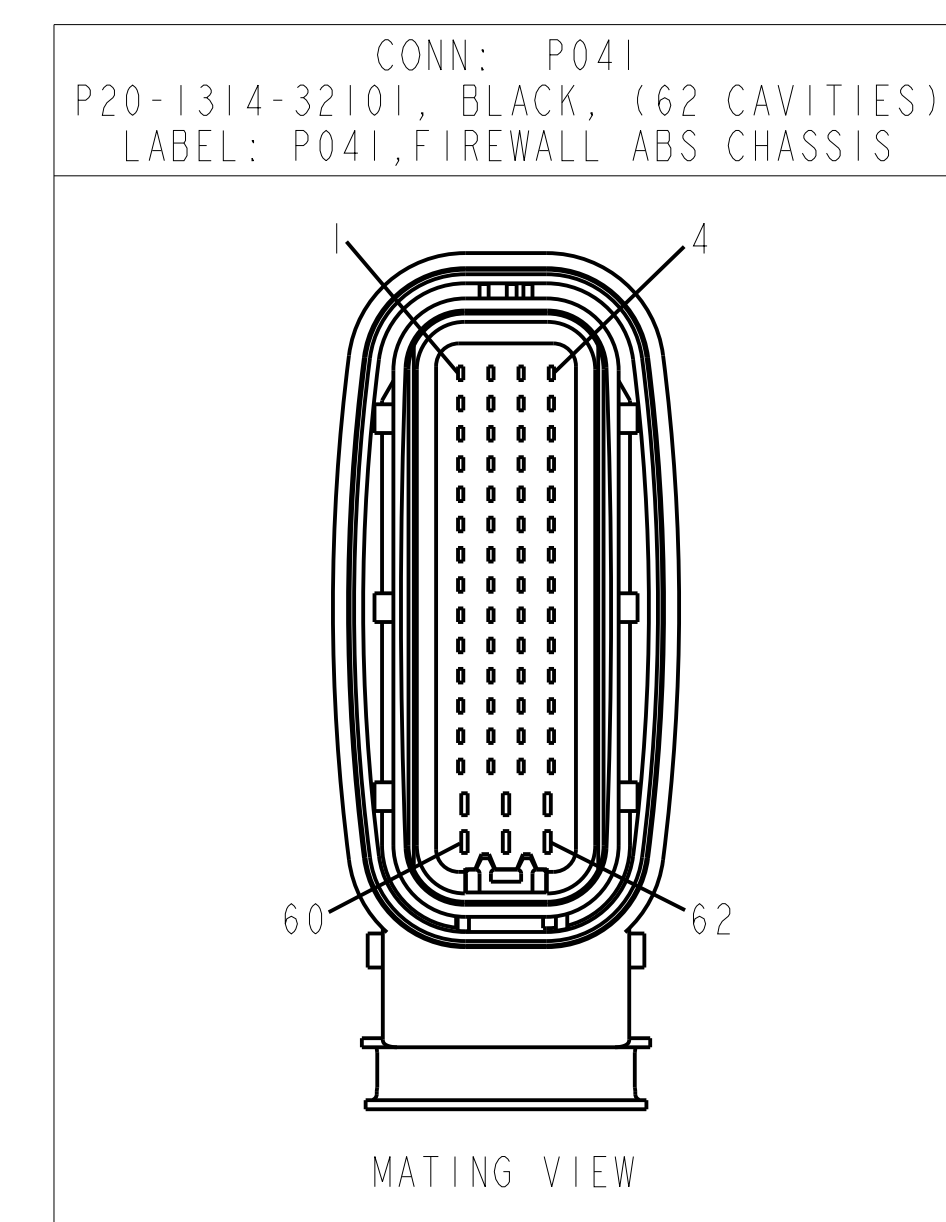
1.20 CIRCUIT POSITION CHART:



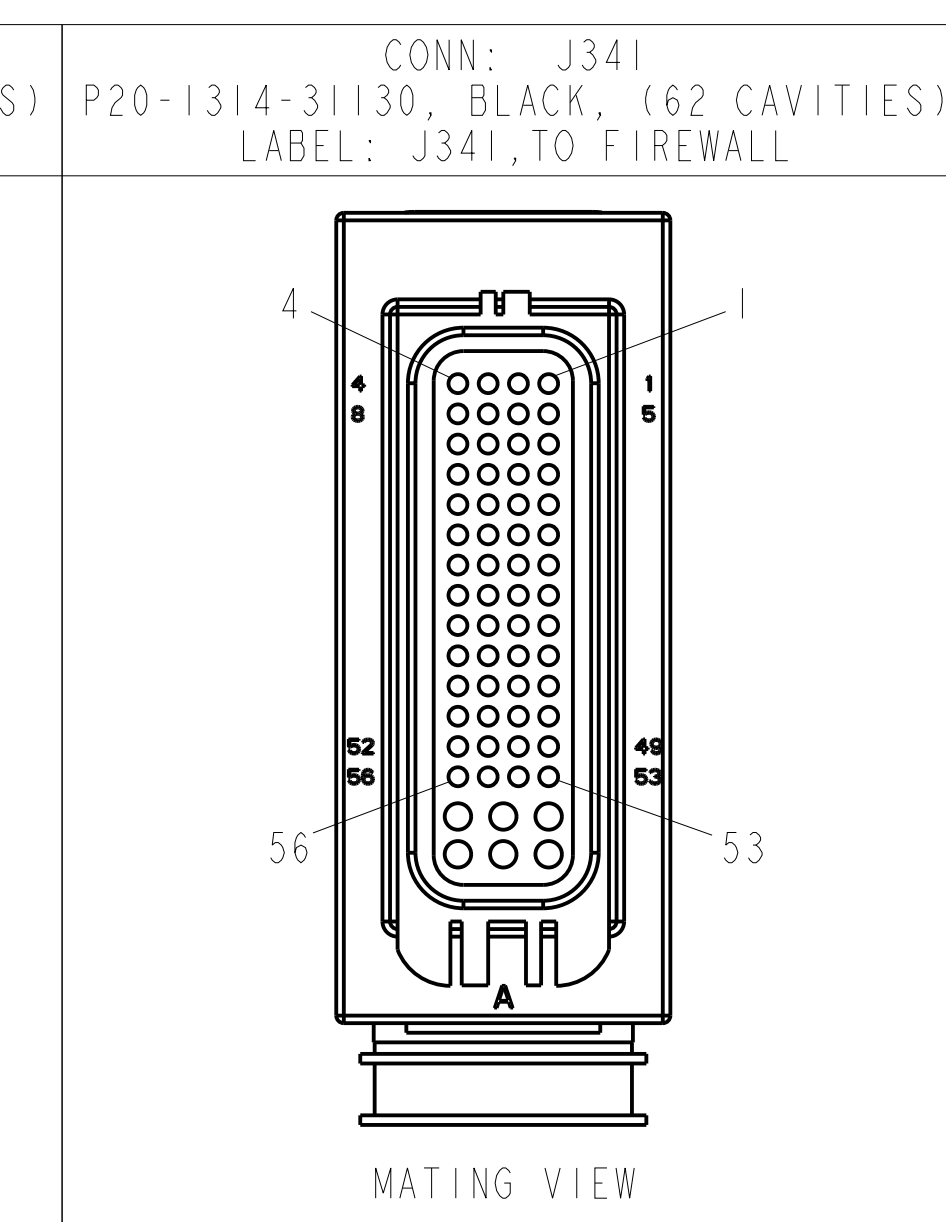
19 CIRCUIT POSITION CHART:



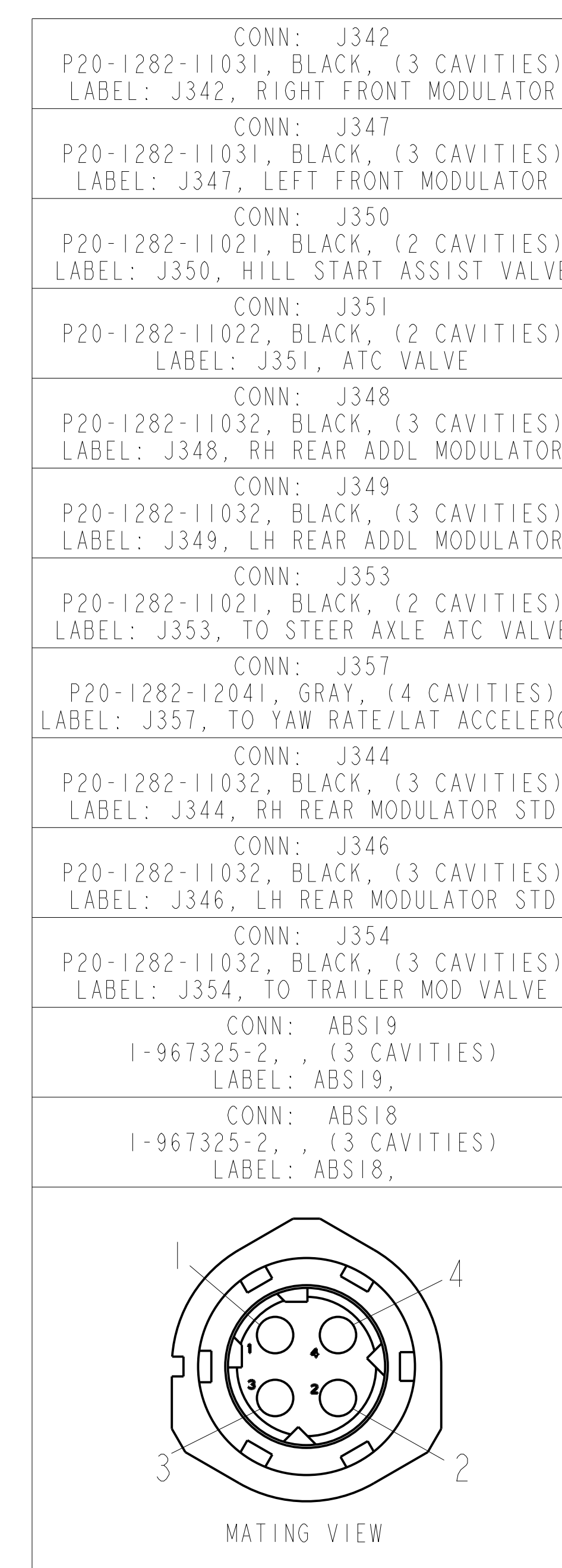
20 CIRCUIT POSITION CHART:



20 CIRCUIT POSITION CHART:



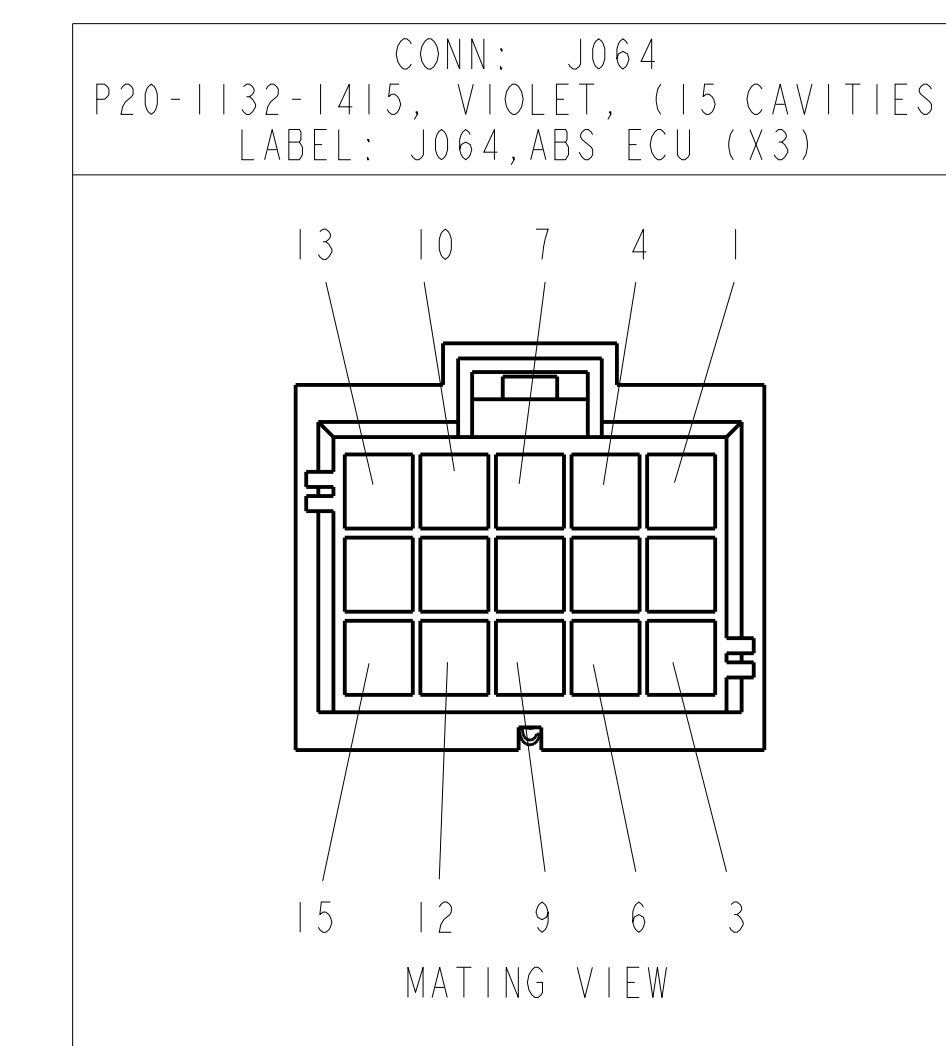
21 CIRCUIT POSITION CHART:



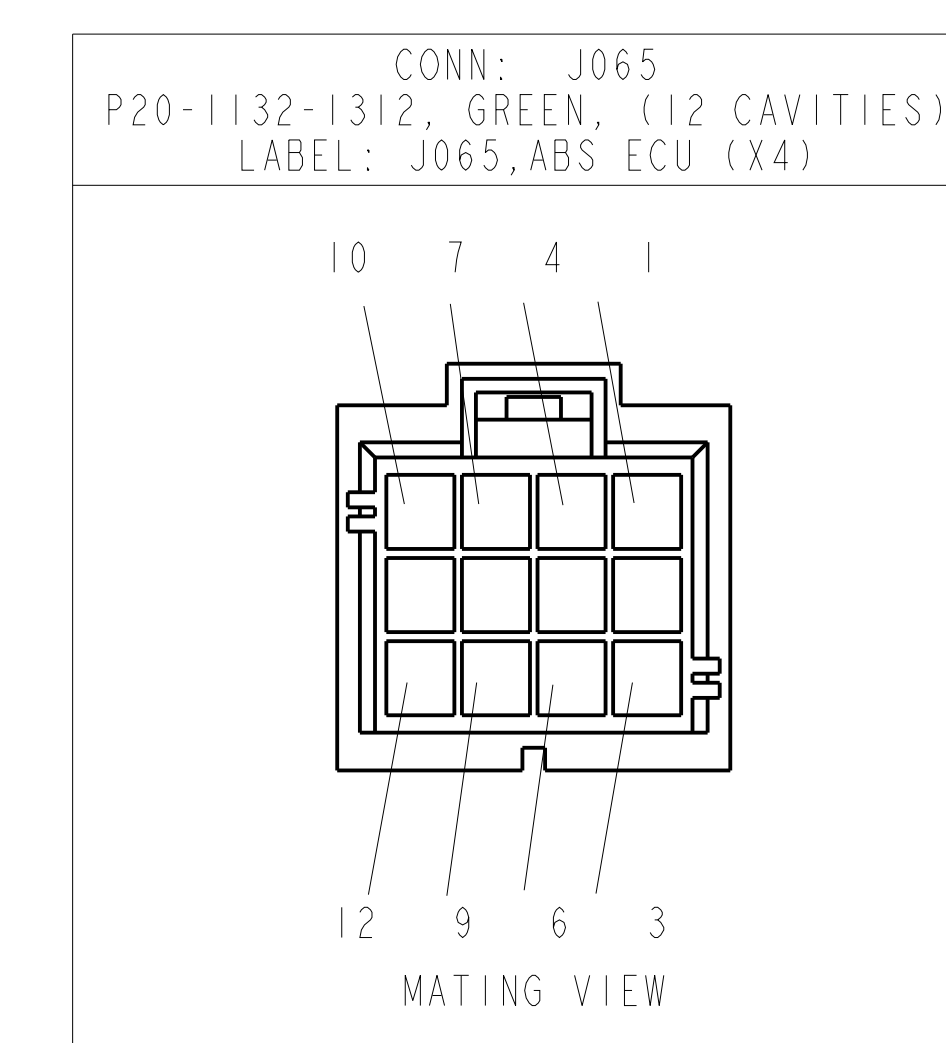
22 CIRCUIT POSITION CHART:



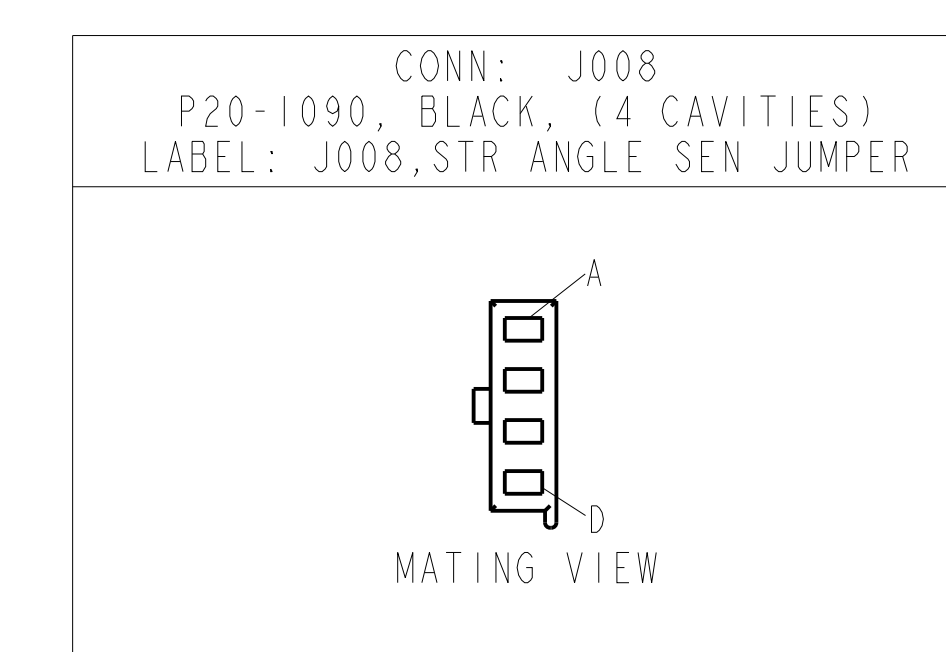
23 CIRCUIT POSITION CHART:



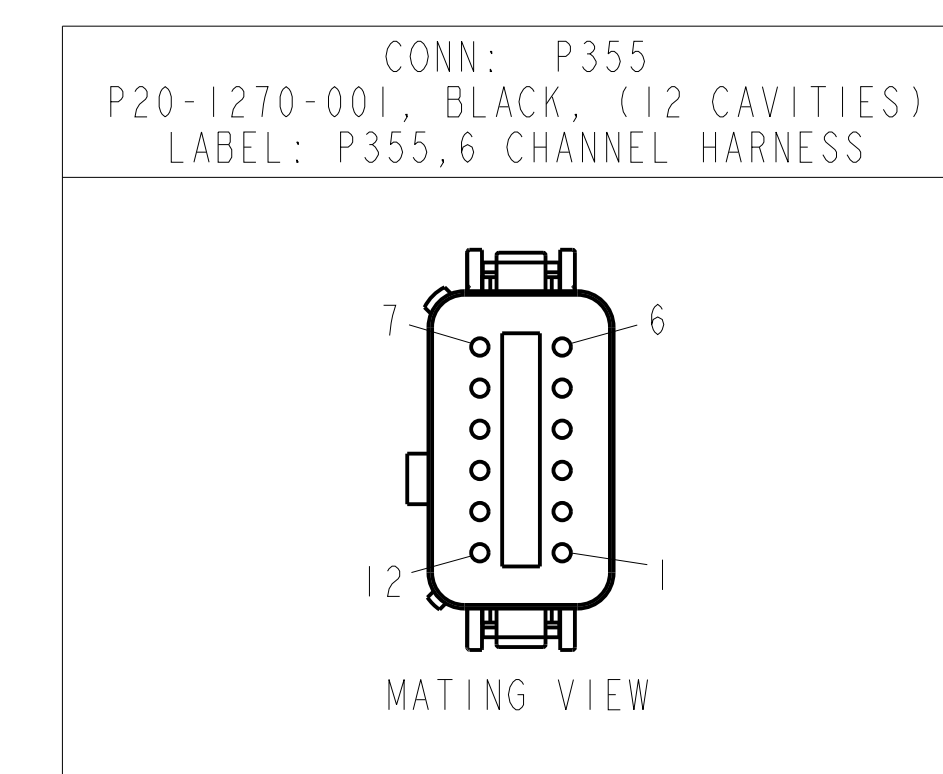
24 CIRCUIT POSITION CHART:



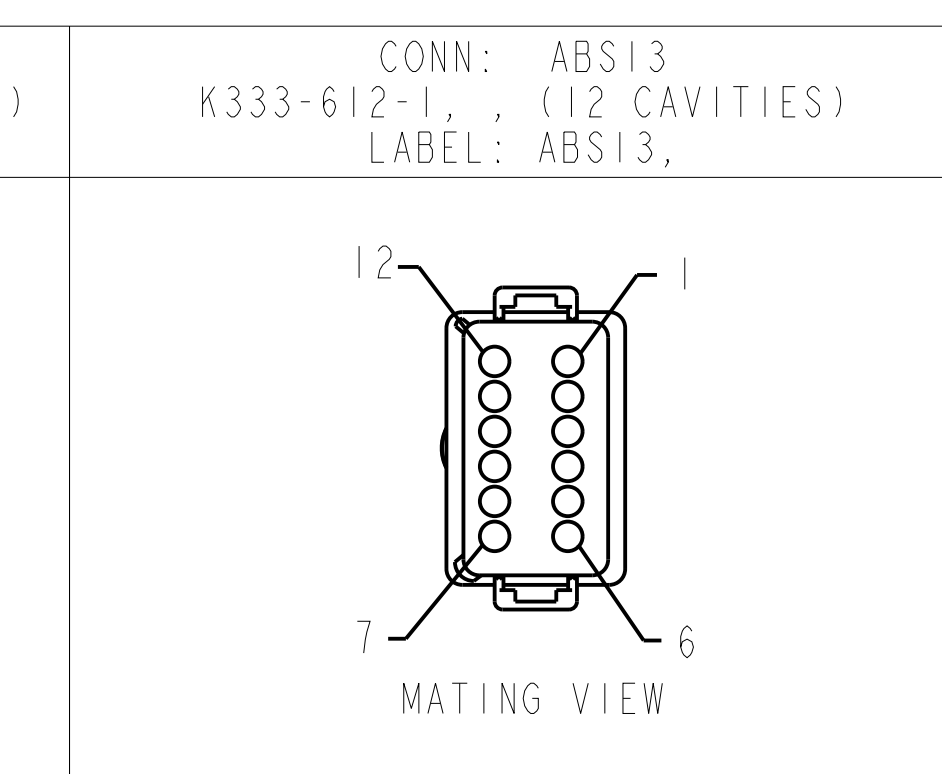
25 CIRCUIT POSITION CHART:



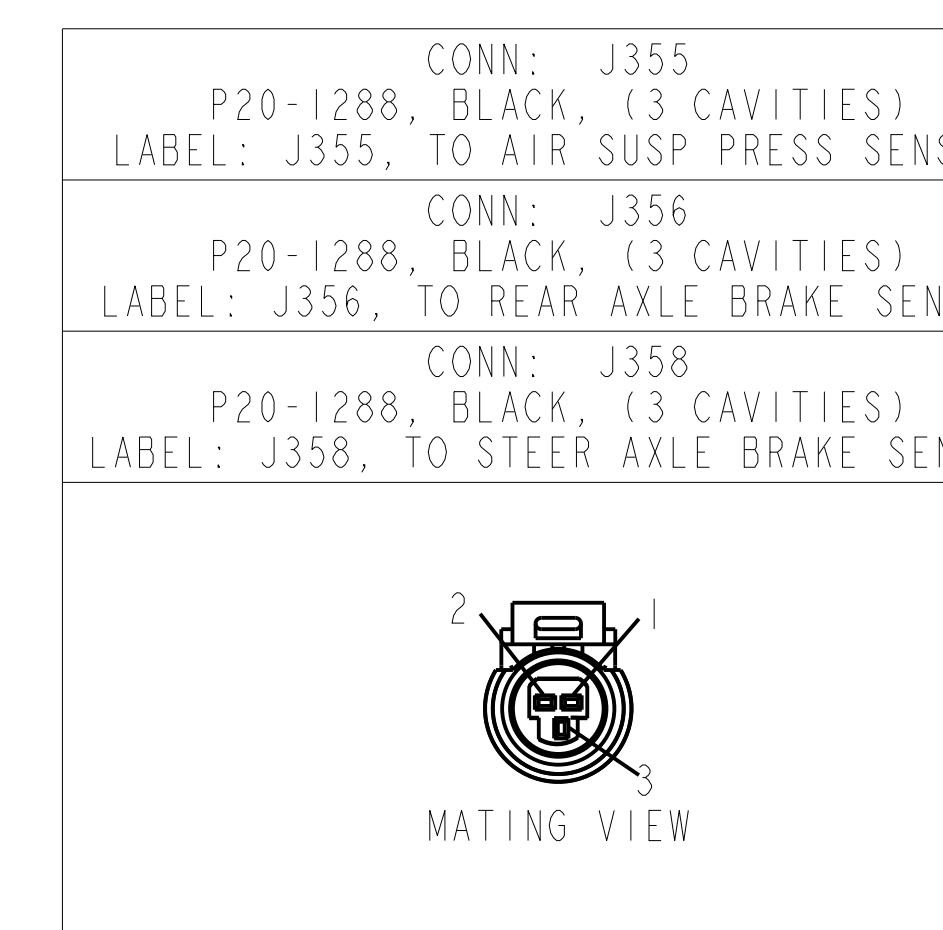
26 CIRCUIT POSITION CHART:



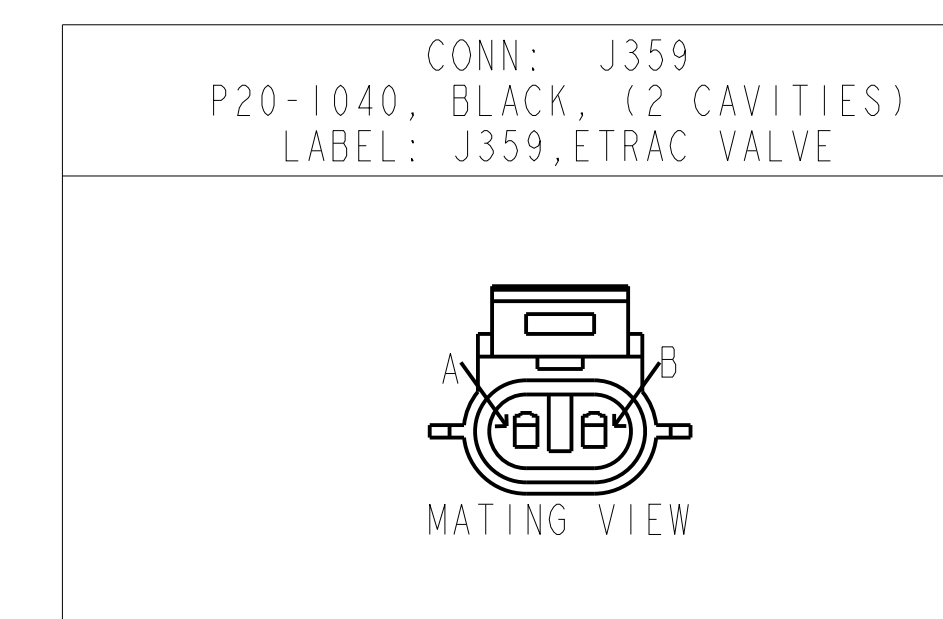
26 CIRCUIT POSITION CHART:



27 CIRCUIT POSITION CHART:



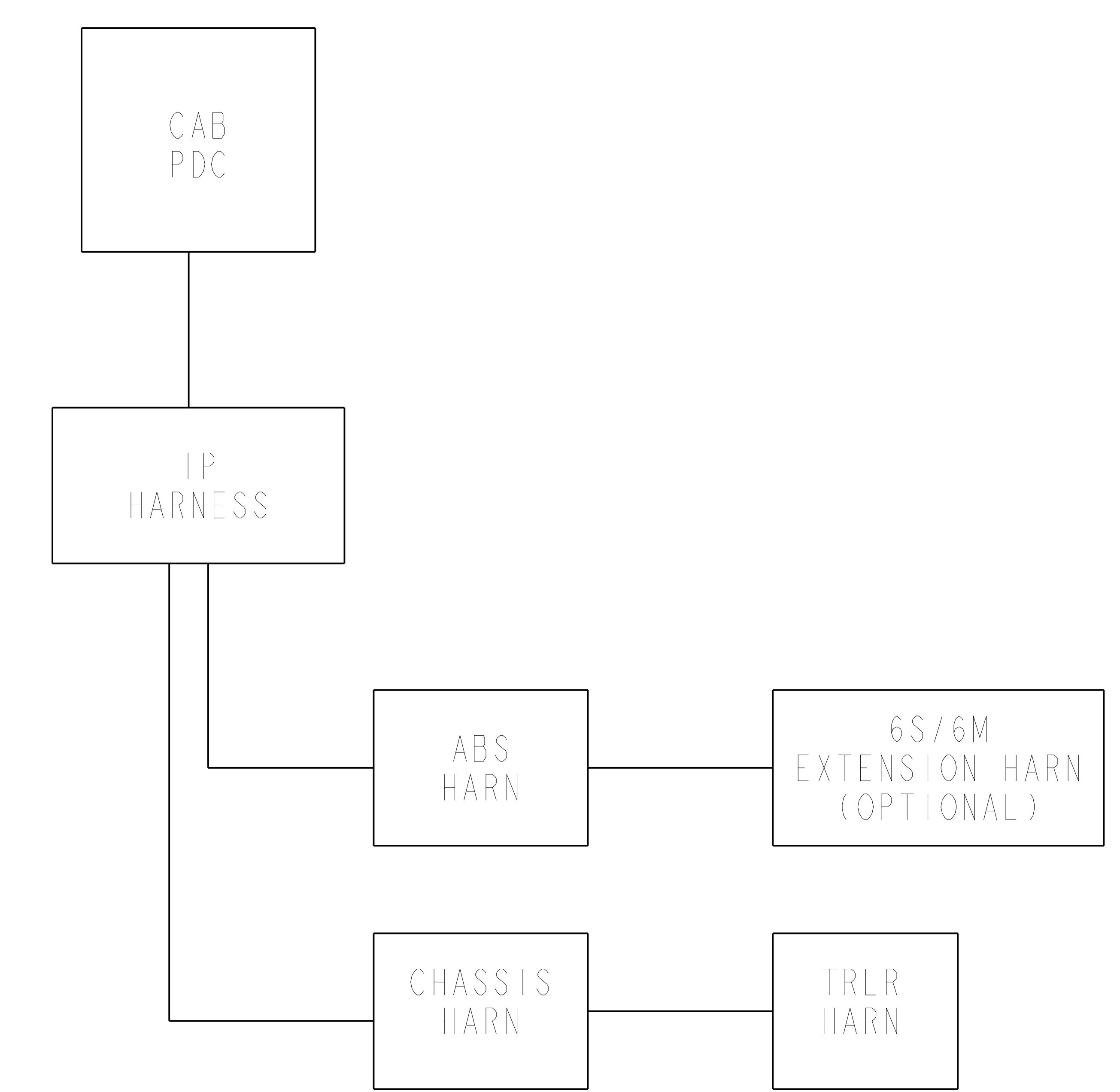
28 CIRCUIT POSITION CHART:



USAGE NOTE:
USE ON NGP TRUCKS WITH BENDIX ABS SYSTEM.

USAGE NOTE:
USE ON NGP TRUCKS WITH BENDIX ABS SYSTEM.

HARNESS BLOCK DIAGRAM



COMPONENT INFORMATION FOR HARNESS: P94-2044

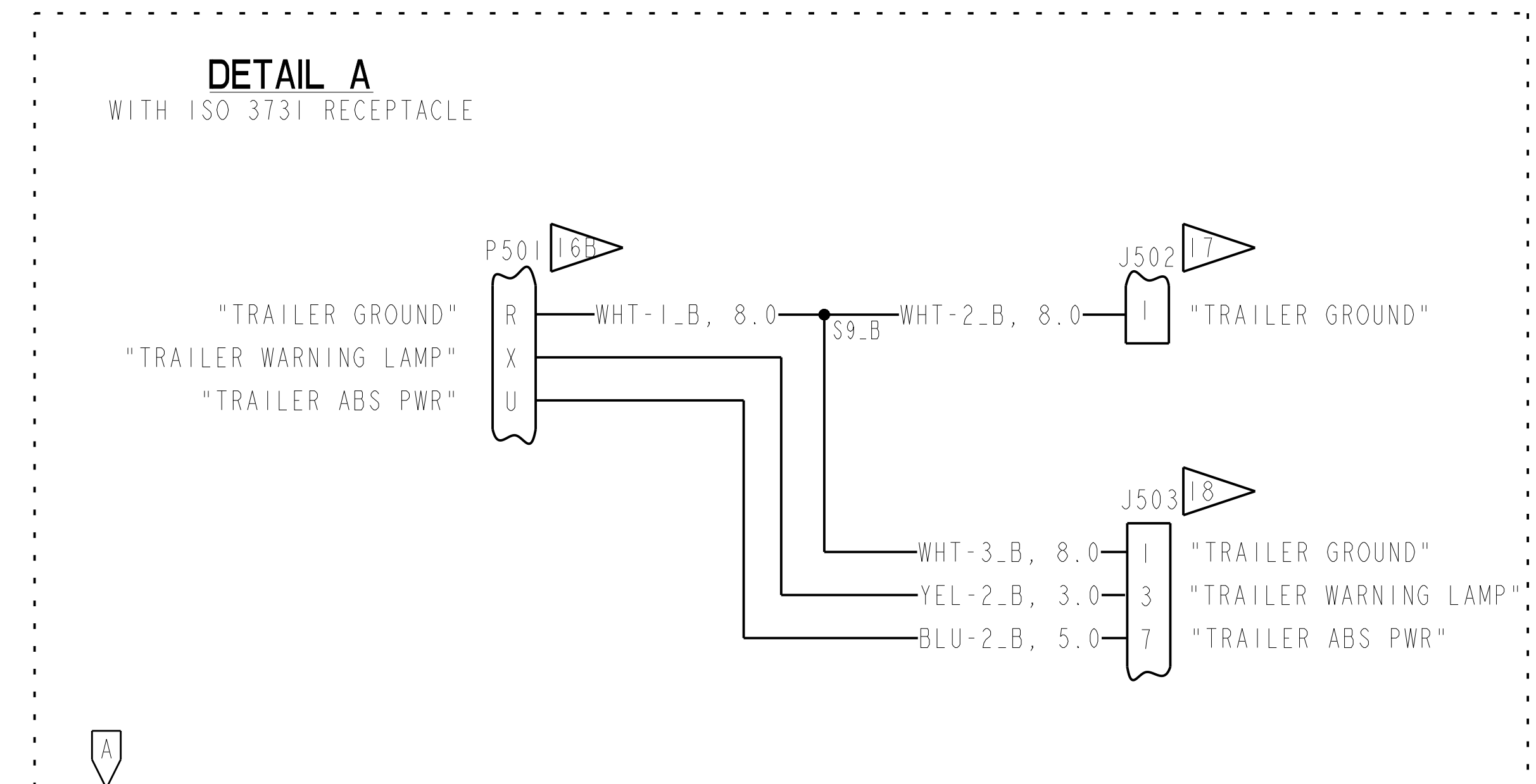
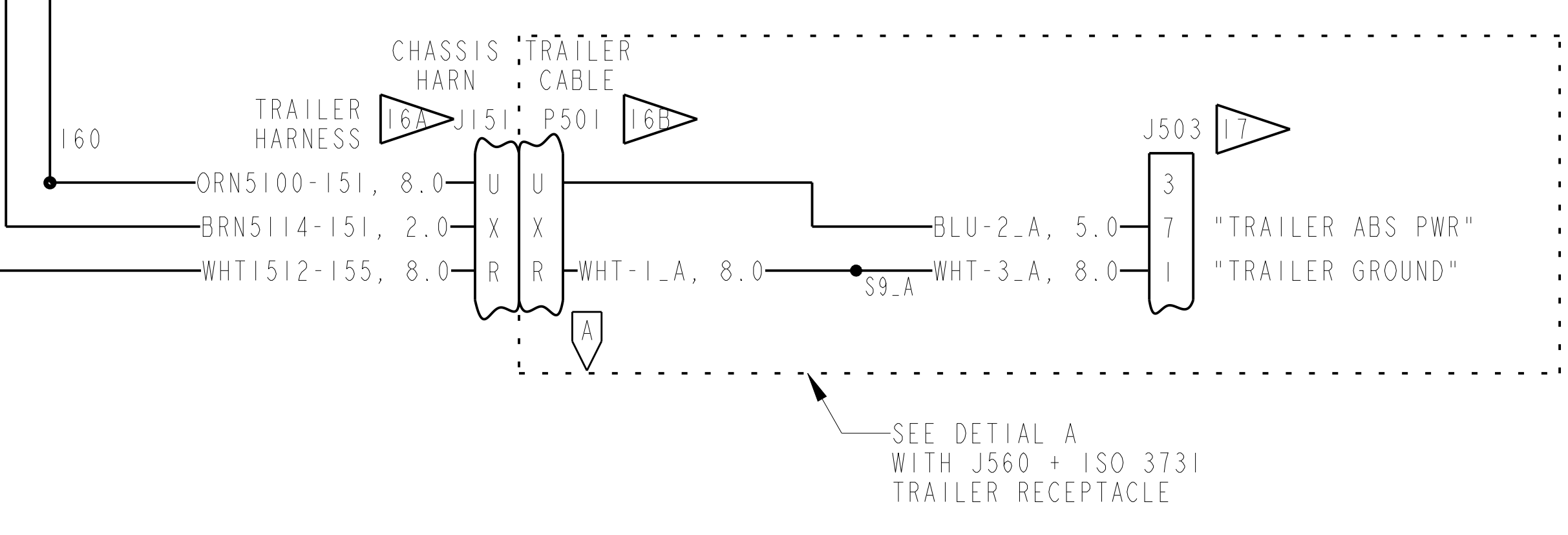
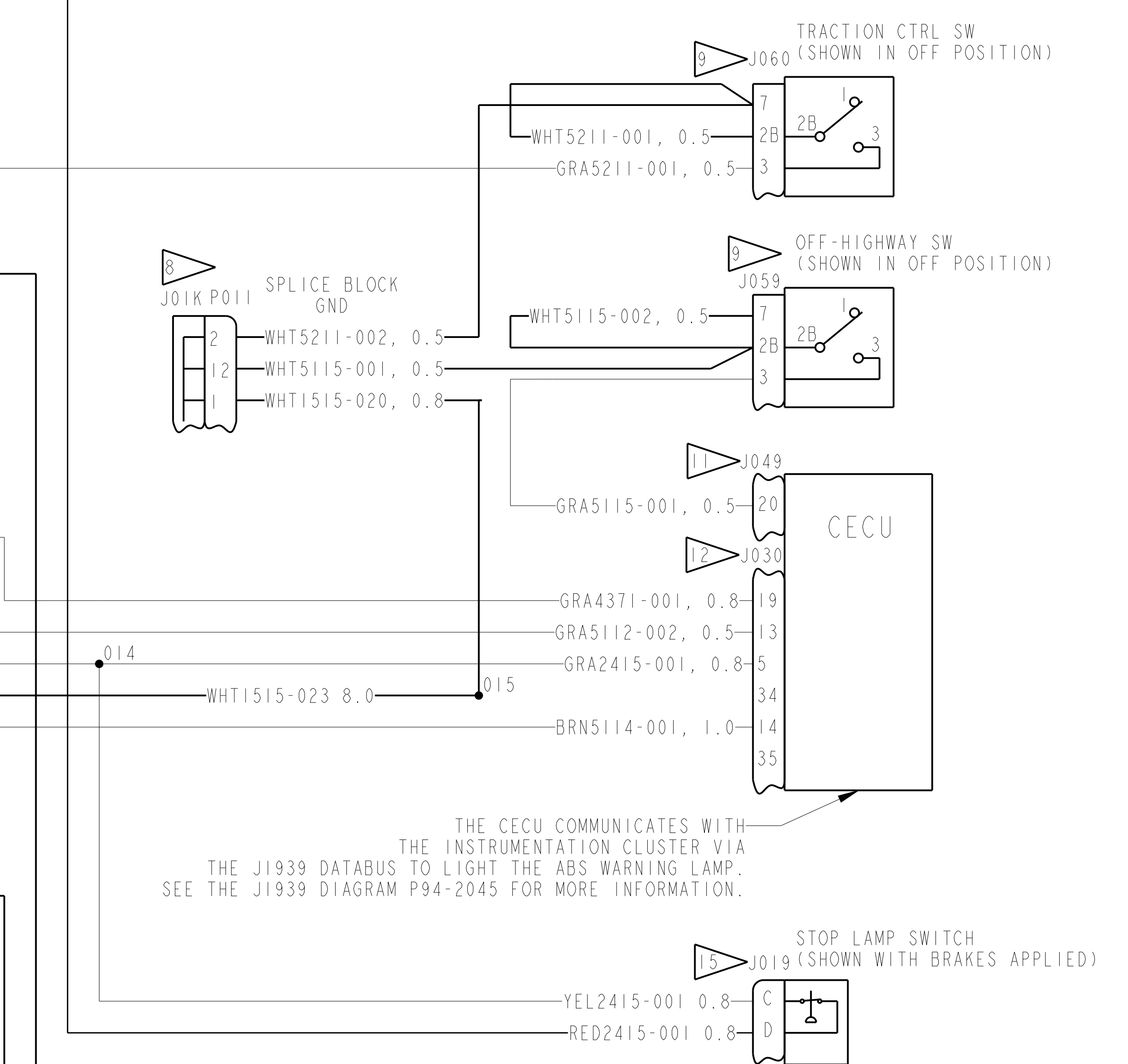
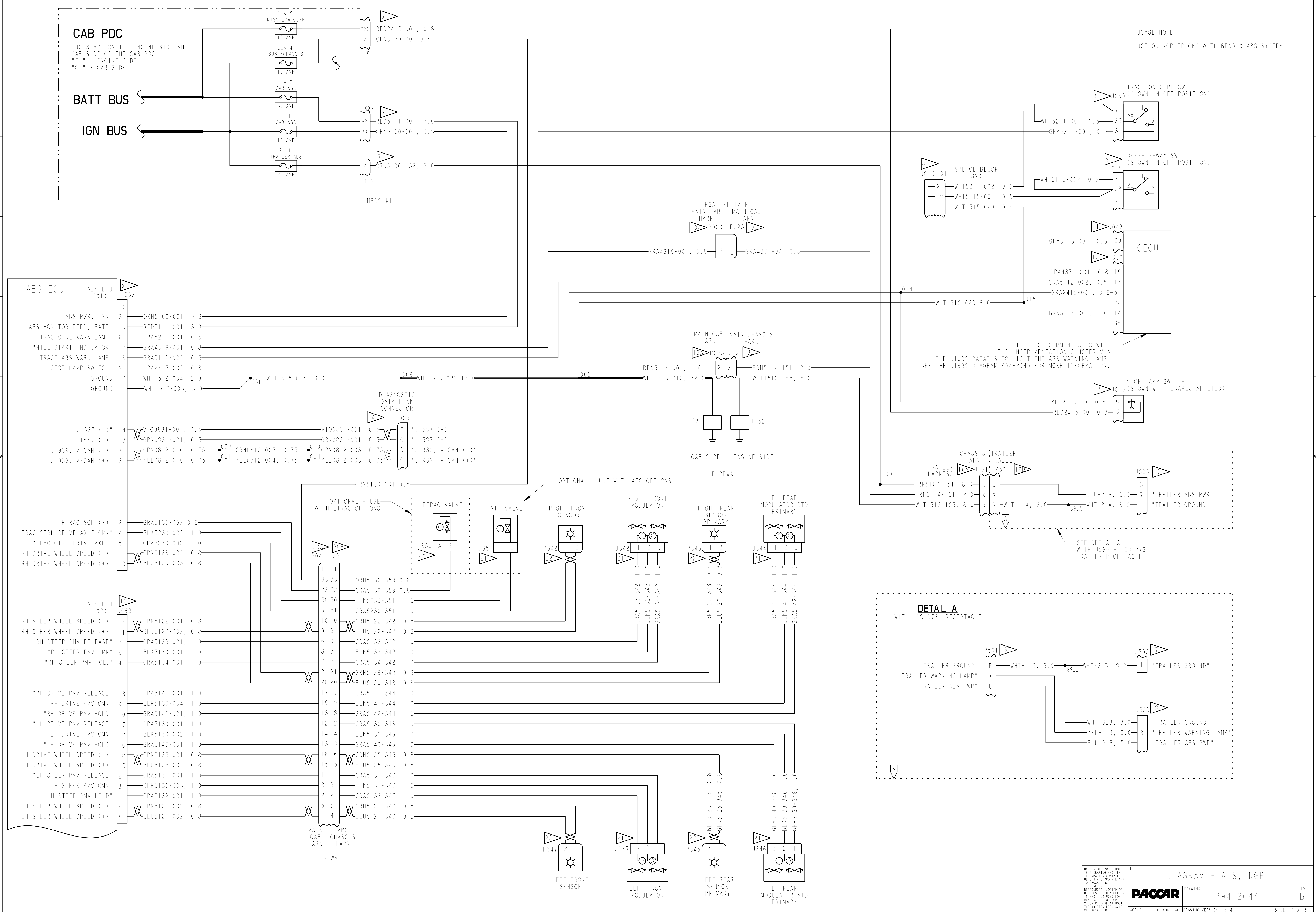
REF_DES	ON SHEET	NUMBER OF CAVITIES	PART NUMBER	DESCRIPTION	LOCATION OF CONNECTOR
ABS13	5	12	K333-612-1	DUETSCH_DT_SERIES_SEALED_BLACK	IN LH RAIL AFT OF BOC C/M
ABS16	5	2	APE-P2P-SPL	ITT_CANNON_2_WAY	LH REAR WHEEL HUB, DEAD OR PUSHER AXLE
ABS17	5	2	APE-P2P-SPL	ITT_CANNON_2_WAY	RH REAR WHEEL HUB, DEAD OR PUSHER AXLE
ABS18	5	3	1-967325-2	AMP_SEALED_CIRCULAR_3_WAY	RH REAR ABS MODULATOR, DEAD OR PUSHER AXLE
ABS19	5	3	1-967325-2	AMP_SEALED_CIRCULAR_3_WAY	BEHIND KEY SWITCH PANEL IN THE DASH
J008	5	4	P20-1090	BLACK, METRI-PACK 150, UNSEALED	IN STEERING COLUMN
J019	4	4	16-09173	ORANGE, METRIPACK 150, SEALED	AT STOP LAMP SWITCH
J030	4	40	P20-1172-1240	BLACK, AMP MOS 40-WAY, UNSEALED	AT CECU IN ECU HOTEL
J049	4	24	P20-1172-1224	BLACK, AMP MOS 24-WAY, UNSEALED	AT CECU IN ECU HOTEL
J059	4	10	P20-1191-3	BLACK, EATON SWITCH NGR, UNSEALED	AT OFF-HIGHWAY SWITCH IN DASH
J060	4	10	P20-1191-3	BLACK, EATON SWITCH NGR, UNSEALED	AT TRACTION CONTROL SWITCH IN DASH
J061	5	10	P20-1191-3	BLACK, EATON SWITCH NGR, UNSEALED	AT HILL START
J062	4	18	1718091-1	BLACK, AMP 17 WAY, UNSEALED	AT ABS ECU
J063	4	18	P20-1132-1518	GRAY, AMP 18-WAY, UNSEALED	AT ABS ECU
J064	5	15	P20-1132-1415	VIOLET, AMP 15-WAY, UNSEALED	AT ABS ECU
J065	5	12	P20-1132-1312	GREEN, AMP 12-WAY, UNSEALED	AT ABS ECU
J151	4	9	P20-1134-09-5-0	BLACK, DEUTSCH, HPD20 SERIES, RECEPTACLE, SEALED	IN LH RAIL AFT OF BOC C/M
J161	4	39	P20-1314-21530	GREEN, TYCO/AMP MCP 39-WAY SEALED	ON LH FIREWALL BELOW PDC
J341	4, 5	62	P20-1314-31130	BLACK, TYCO, MCP SERIES, SEALED	ON LH FIREWALL BELOW PDC
J342	4	3	P20-1282-11031	BLACK AMP SEALED CIRCULAR 3 WAY 90-DEG	AT RH FRONT ABS MODULATOR
J344	4	3	P20-1282-11032	BLACK AMP SEALED CIRCULAR 3 WAY STRAIGHT	AT RH REAR ABS MODULATOR
J346	4	3	P20-1282-11032	BLACK AMP SEALED CIRCULAR 3 WAY STRAIGHT	AT LH REAR ABS MODULATOR
J347	4	3	P20-1282-11031	BLACK AMP SEALED CIRCULAR 3 WAY 90-DEG	AT LH FRONT ABS MODULATOR
J348	5	3	P20-1282-11032	BLACK AMP SEALED CIRCULAR 3 WAY STRAIGHT	AT RH REAR 6S/6M MODULATOR
J349	5	3	P20-1282-11032	BLACK AMP SEALED CIRCULAR 3 WAY STRAIGHT	AT LH REAR 6S/6M MODULATOR
J350	5	2	P20-1282-11021	BLACK AMP SEALED CIRCULAR 2 WAY 90-DEG	AT HSA MODULATOR VALVE
J351	4	2	P20-1282-11022	BLACK AMP SEALED CIRCULAR 2 WAY STRAIGHT	AT ATC VALVE
J353	5	2	P20-1282-11021	BLACK AMP SEALED CIRCULAR 2 WAY 90-DEG	AT STEER AXLE ATC VALVE
J354	5	3	P20-1282-11032	BLACK AMP SEALED CIRCULAR 3 WAY STRAIGHT	AT TRAILER MODULATOR VALVE
J355	5	3	P20-1288	BLACK PACKARD GT150 SEALED 3-WAY SENSOR	AT AIR SUSPENSION PRESSURE SENSOR ON LH FIREWALL ENGINE SIDE
J356	5	3	P20-1288	BLACK PACKARD GT150 SEALED 3-WAY SENSOR	AT REAR AXLE BRAKE PRESSURE SENSOR ON LH FIREWALL ENGINE SIDE
J357	5	4	P20-1282-12041	GRAY AMP SEALED CIRCULAR 4 WAY 90-DEG	AT ESP YAW RATE SENSOR ON BOC C/M
J358	5	3	P20-1288	BLACK PACKARD GT150 SEALED 3-WAY SENSOR	AT STEER AXLE BRAKE PRESSURE SENSOR ON LH FIREWALL ENGINE SIDE
J359	4	2	P20-1040	BLACK DELPHI SEALED CIRCULAR 2 WAY STRAIGHT	AT ETRAC VALVE
J502	4	7	J560_RECEPTACLE	J560 TRAILER RECEPTACLE & CABLE ASSY	AT TRAILER KIT
J503	4	7	ISO-3731_RECEPTACLE	ISO 3731 TRAILER RECEPTACLE & CABLE ASSY	AT TRAILER KIT
P001	4	46	P20-1301-001	BLACK, A-POLE mPDC (ALCOA)	AT CAB PDC, INTERIOR SIDE
P003	4	46	P20-1301-003	BLUE, E-POLE mPDC (ALCOA)	AT CAB PDC, INTERIOR SIDE
P005	4	9	P20-1199-1	BLACK, J1939 DIAGN GLASSMASTER 9-WAY, SEALED	IN LH DASH CLOSEOUT PANEL
P011	4	21	P20-1132-1021	BROWN, AMP 21-WAY, UNSEALED	AT GROUND SPLICE BLOCK BEHIND GAUGE CLUSTER
P025	4	2	P20-1195-1102	NATURAL, MOLEX MINIFIT 2-WAY, UNSEALED	IN DASH ON LH SIDE OF ECU HOTEL
P033	4	39	P20-1314-22531	GREEN, TYCO/AMP MCP 39-WAY SEALED	ON LH FIREWALL IN DASH BELOW PDC
P041	4, 5	62	P20-1314-32101	BLACK, TYCO MCP SERIES, SEALED	ON LH FIREWALL IN DASH BELOW PDC
P060	4	2	P20-1079	NATURAL, MOLEX MINI FIT, UNSEALED	IN DASH ON LH SIDE OF ECU HOTEL
P152	4	21	P20-1314-11110	BLACK, CONNECTOR AMP 21 WAY MCP, SEALED	AT CAB PDC, ENGINE SIDE
P342	4	2	P20-6064	BLACK, ITT, CANNON, 2 WAY	IN RH RAIL NEAR FRONT AXLE
P343	4	2	P20-6064	BLACK, ITT, CANNON, 2 WAY	IN RH RAIL NEAR REAR SUSPENSION
P345	4	2	P20-6064	BLACK, ITT, CANNON, 2 WAY	IN LH RAIL NEAR REAR SUSPENSION
P347	4	2	P20-6064	BLACK, ITT, CANNON, 2 WAY	IN LH RAIL NEAR FRONT AXLE
P348	5	2	P20-6064	BLACK, ITT, CANNON, 2 WAY	IN RH RAIL NEAR REAR SUSPENSION
P349	5	2	P20-6064	BLACK, ITT, CANNON, 2 WAY	IN LH RAIL NEAR REAR SUSPENSION
P355	5	12	P20-1270-001	GRAY, DEUTSCH, DT SERIES, SEALED	IN LH RAIL AFT OF BOC C/M
P501	4	9	P20-1133-09-5-0	DEUTSCH HDP20 9-WAY, PLUG	IN LH RAIL AFT OF BOC C/M
T001	4	1	K333-46-22	RING TERMINAL (1/4")	AT FIREWALL GROUND, DASH SIDE
T152	4	1	K333-46-27	RING, TERMINAL, (1/4")	AT FIREWALL GROUND, ENGINE SIDE

CAB PDC
 FUSES ARE ON THE ENGINE SIDE AND CAB SIDE OF THE CAB PDC
 "E." - ENGINE SIDE
 "C." - CAB SIDE

BATT BUS

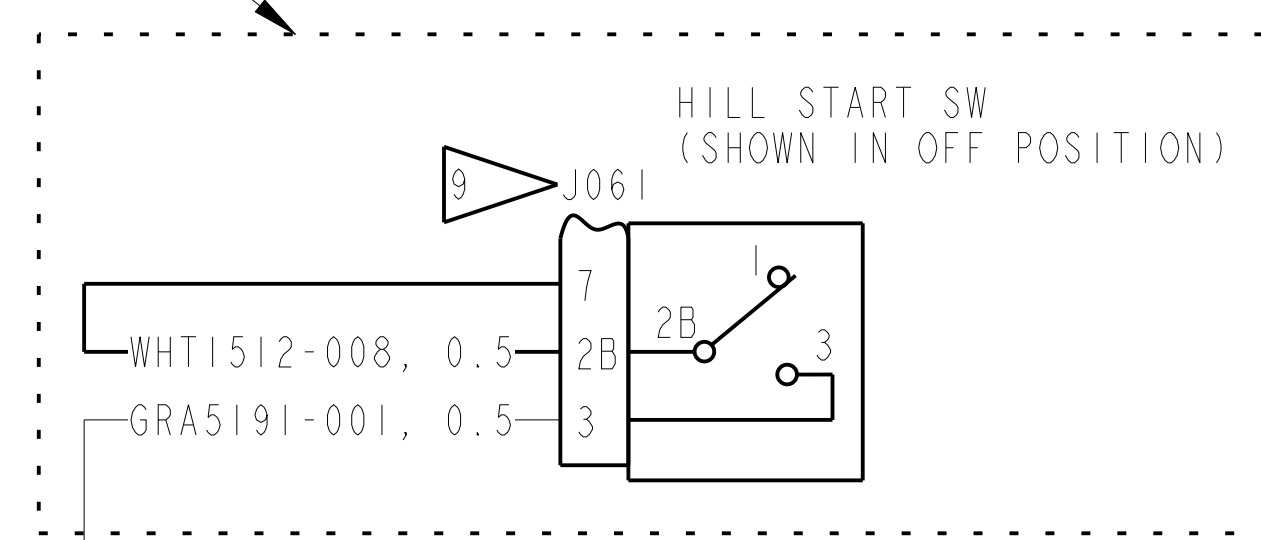
IGN BUS

USAGE NOTE:
 USE ON NGP TRUCKS WITH BENDIX ABS SYSTEM.



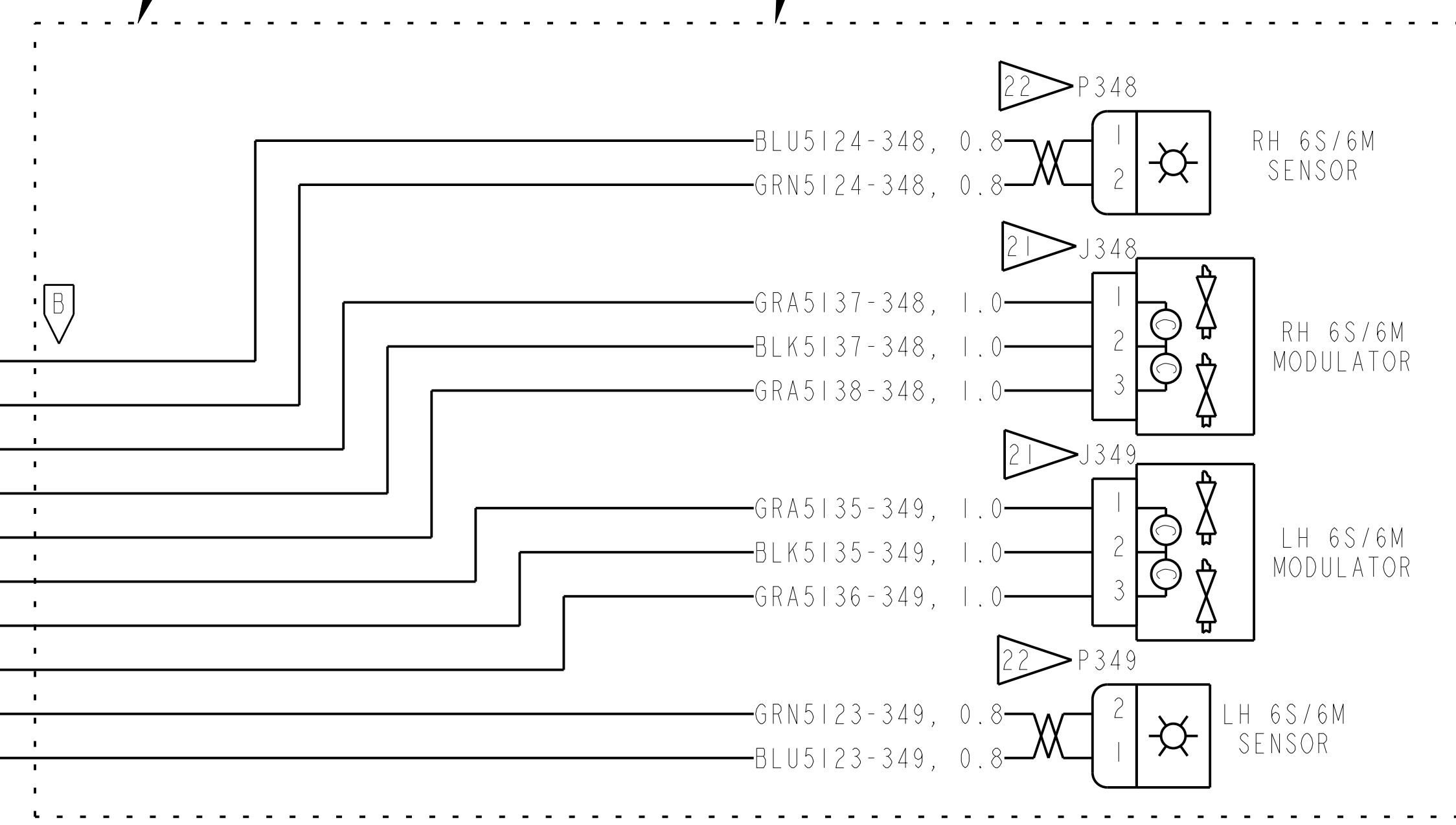
USAGE NOTE:
USE ON NGP TRUCKS WITH BENDIX ABS SYSTEM.

OPTIONAL - USE WITH
EATON ULTRASHIFT
TRANSMISSION



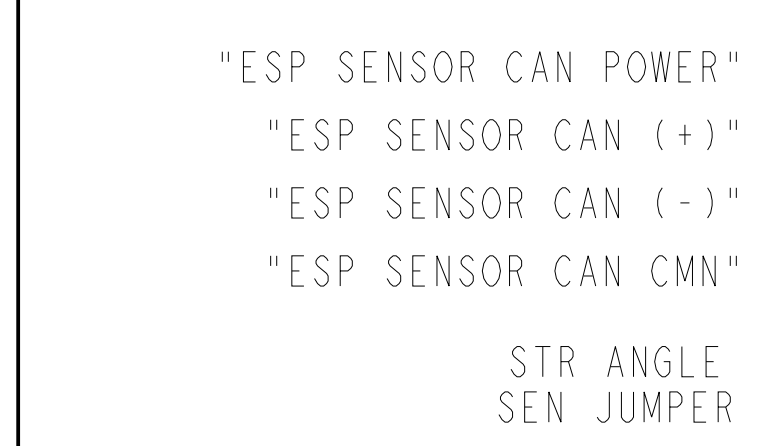
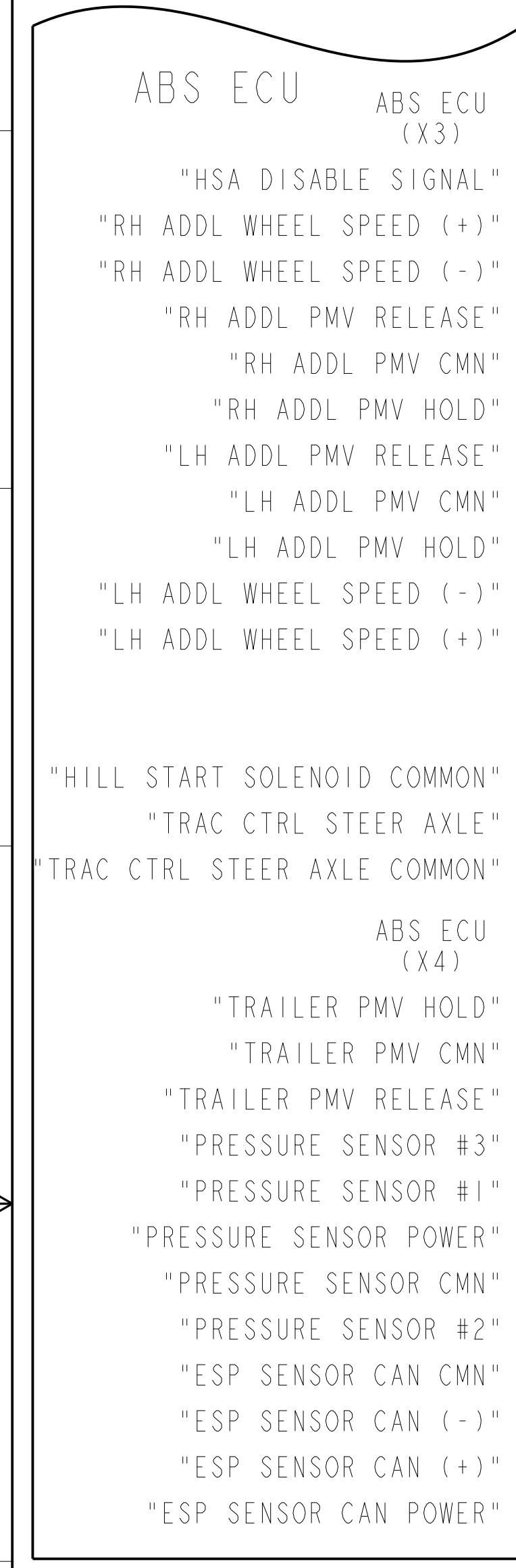
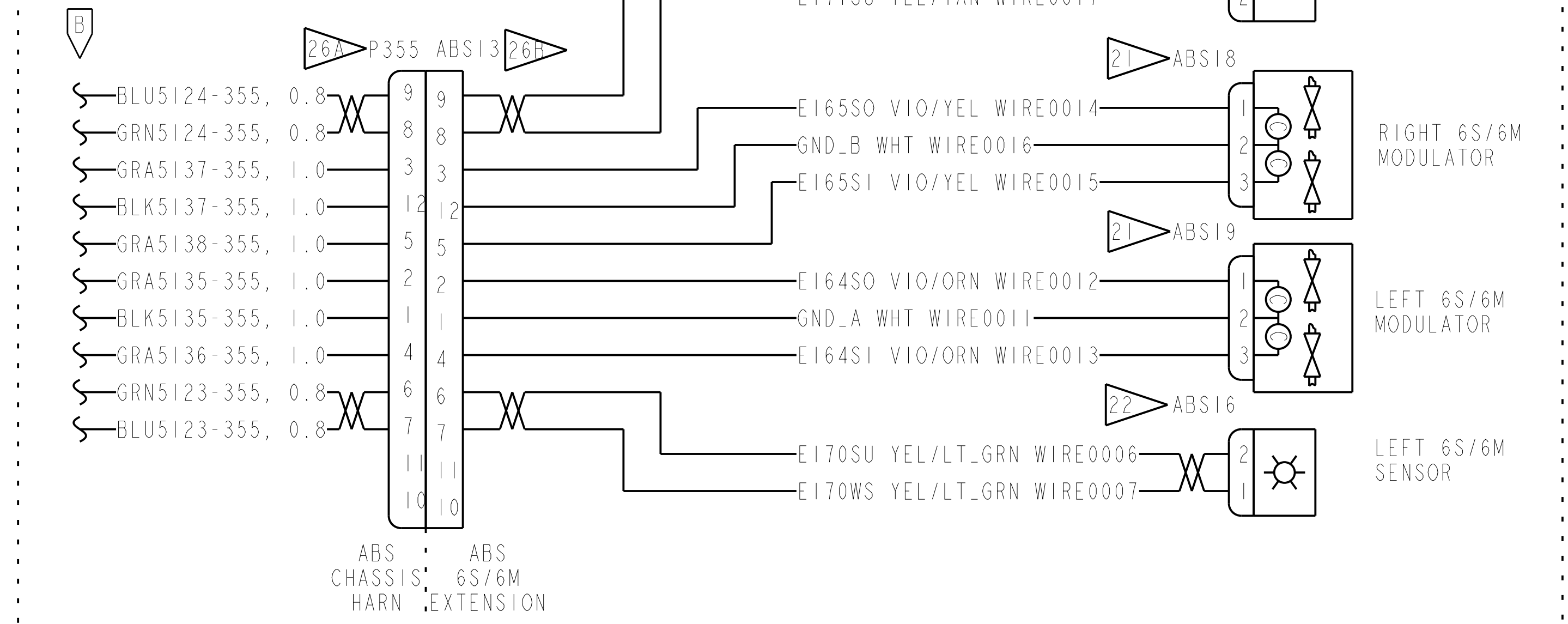
SEE DETAIL B
FOR USE WITH 6S/6M ABS
WITH PRIMARY REAR MODULATORS
ON THE FRONT REAR AXLE OR
WITH ABS CONTROLLED PUSHER/TAG AXLES
OR WITH DEAD AXLE TANDEMS

OPTIONAL - USE WITH
6S/6M ABS

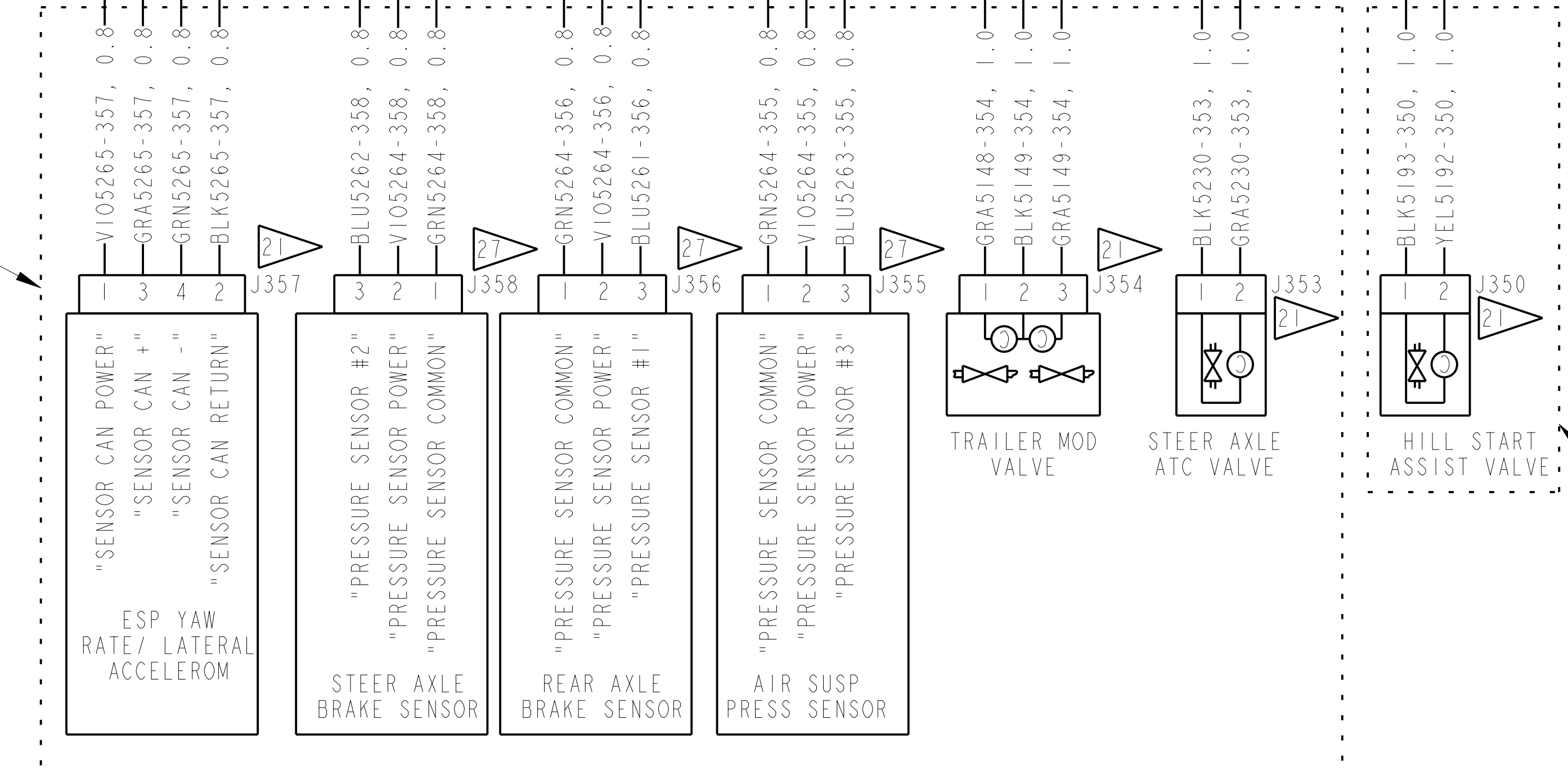


DETAIL B

USE WITH 6S/6M ABS
WITH PRIMARY REAR MODULATORS
ON THE FRONT REAR AXLE OR
WITH ABS CONTROLLED PUSHER/TAG AXLES
OR WITH DEAD AXLE TANDEMS



OPTIONAL - USE WITH BENDIX ESP
(ELECTRONIC STABILITY PROGRAM OPTION)



OPTIONAL - USE WITH EATON ULTRASHIFT
TRANSMISSIONS WITH HILL START ASSIST