

K-Lite Installation Instructions

Question: What is a codec?

Answer: This is what the wise [Wikipedia](#) has to say about codecs.

"A codec is a device or program capable of performing encoding and decoding on a digital data stream or signal. The word codec may be a combination of any of the following: 'Compressor-Decompressor', 'Coder-Decoder', or 'Compression/Decompression algorithm'."

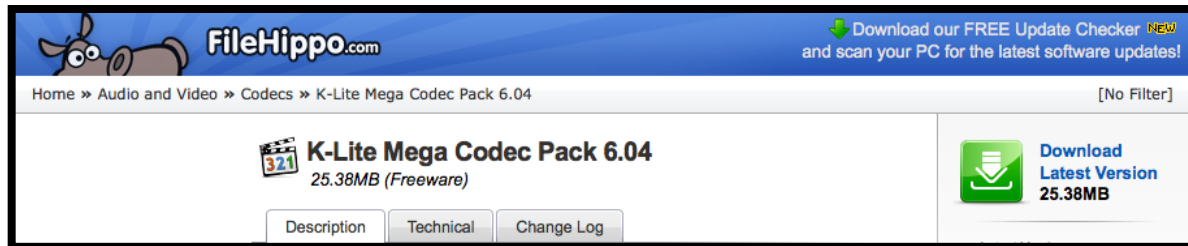
Essentially a codec is a nice little package that is put together around your video that tells the computer what to do with the video. Sometimes, though, a computer may not know how to read a certain codec and you have to give it the proper "instructions" on how to handle codecs.

K-Lite Mega Codec Pack is one of the most comprehensive sets of codecs freely available. With virtually no tweaking (unless you want to and know what you're doing) necessary, K-Lite is simple to install and, after restarting your computer, will provide your computer with a large set of codec instructions that should make playback of most videos and DVDs simple.

Let's get started!

*****Disclaimer: RenewedVision is not affiliated with K-Lite in any way. The following instructions aren't guaranteed to work, however they have a high percentage success rate at resolving video playback issues. If you have any questions about the installation process, please ask for help in the forums. This will allow us to publically answer questions that other people may have regarding the same topic.***

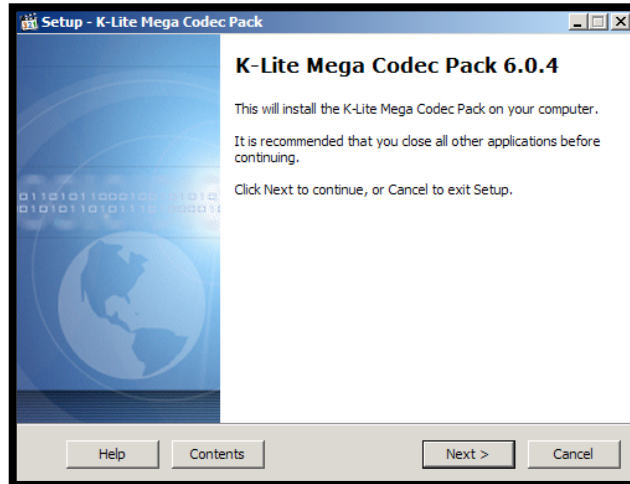
Downloading K-Lite Mega Codec Pack



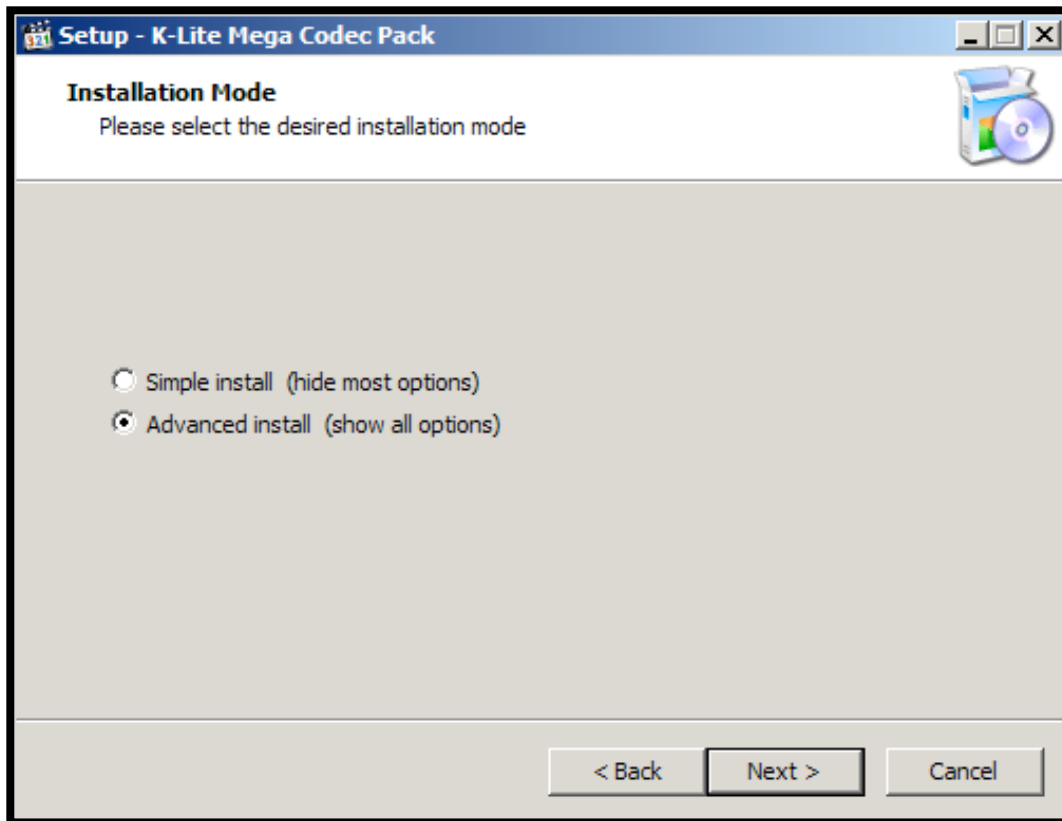
The easiest location to download K-Lite Mega Codec Pack is from FileHippo.com. You can go straight to the download page by going to <http://bit.ly/klitedownload>. Once there, click on the green “Download Latest Version” button. K-Lite doesn’t include an auto-update feature, so you may want to check back every few months to download the latest version of K-Lite. Generally the updates only deal with more obscure codecs or new additions.

Installing K-Lite Mega Codec Pack

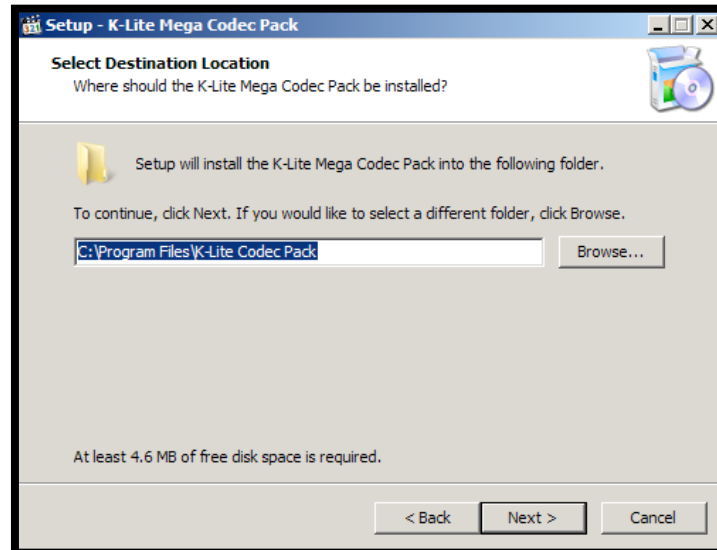
#1: There are 13 steps in the installation. Most of them are simply clicking “Next”. All 14 steps are included, however, there are several that are shown in a smaller size because they only require you to click the “Next” button.



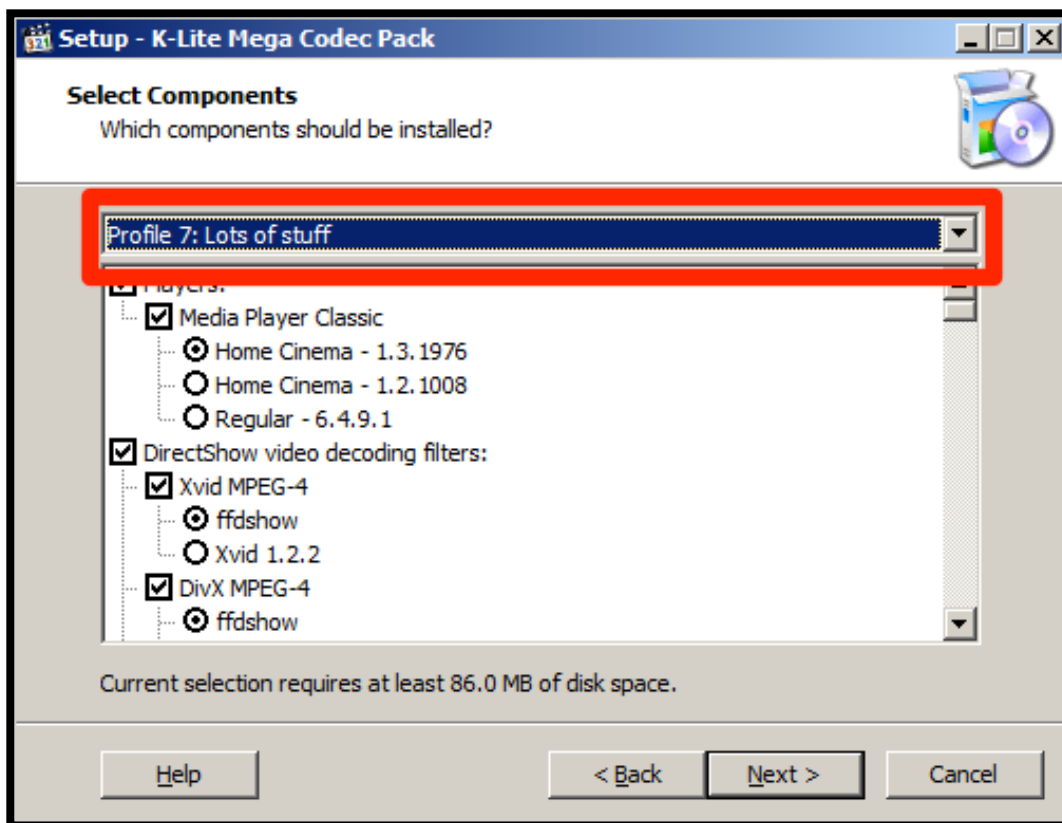
#2: Select “Advanced install (show all options)” on screen #2. This is necessary so that you can choose which codec package to install in a later step.



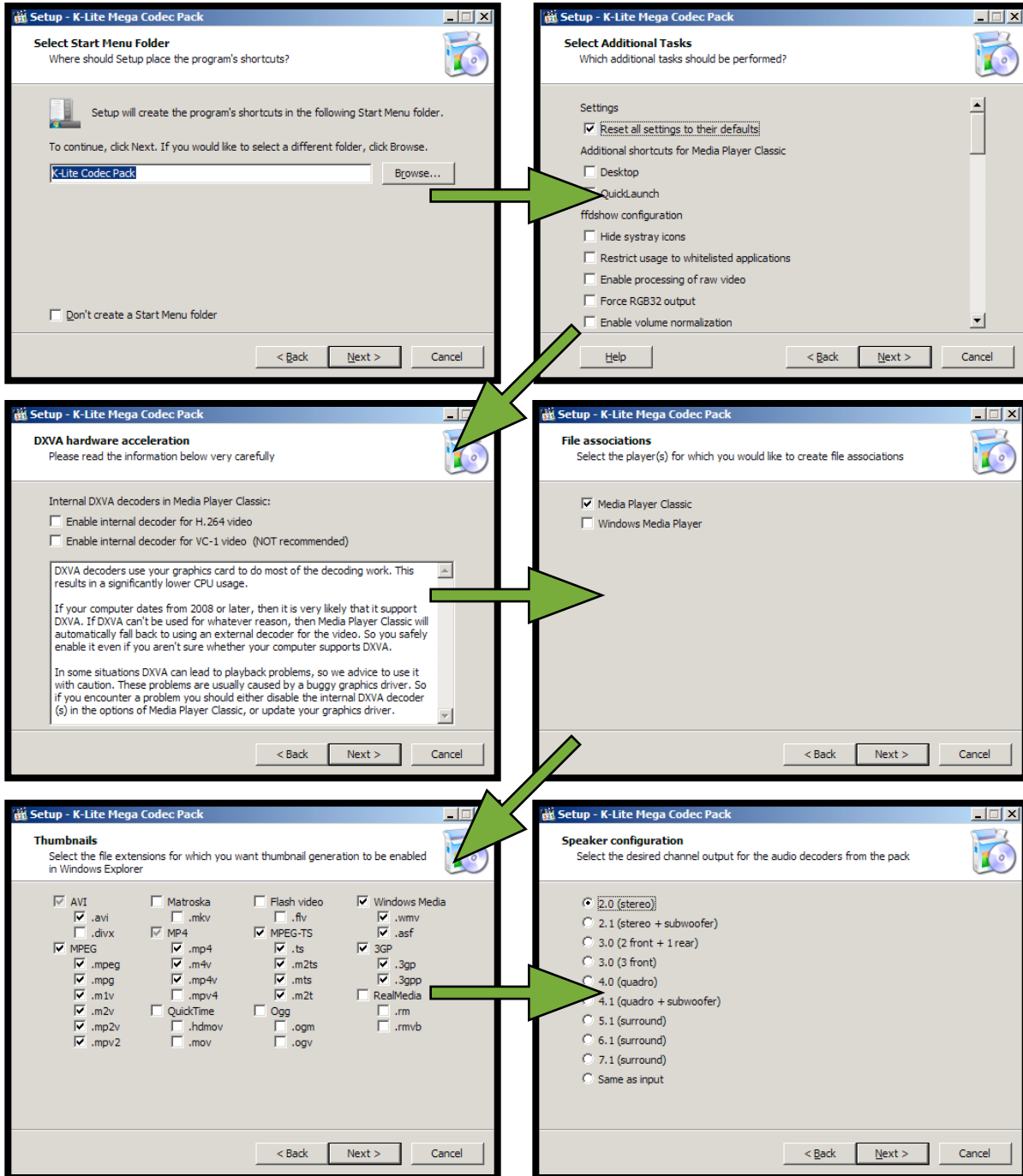
#3: Unless you like your programs to be installed somewhere else, it's recommended to just let K-Lite install where it wants to by default.



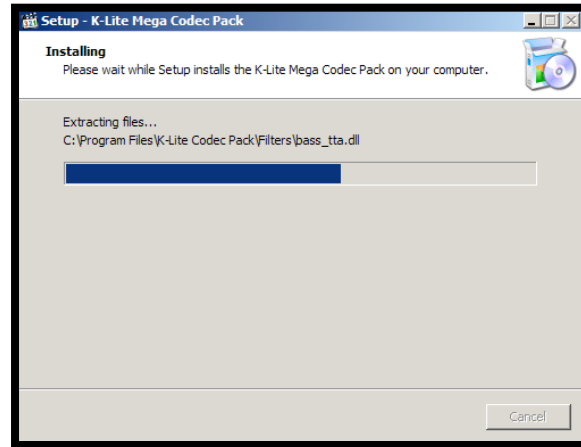
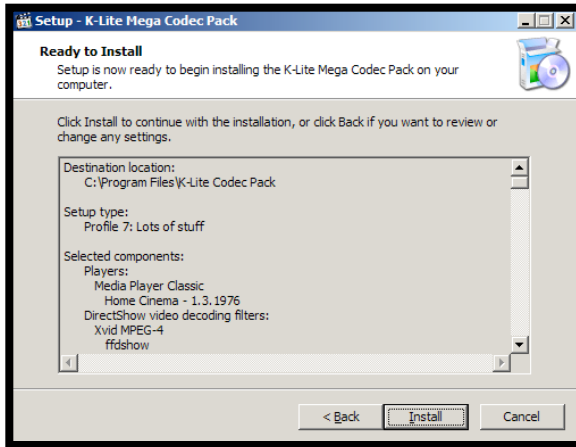
#4: THIS ONE IS IMPORTANT. From the drop down menu (it's going to say "Profile 1:Default" when you get to this screen) select "**Profile 7: Lots of stuff**" in order to get everything you need. You don't need to change anything else other than which profile you want to install.



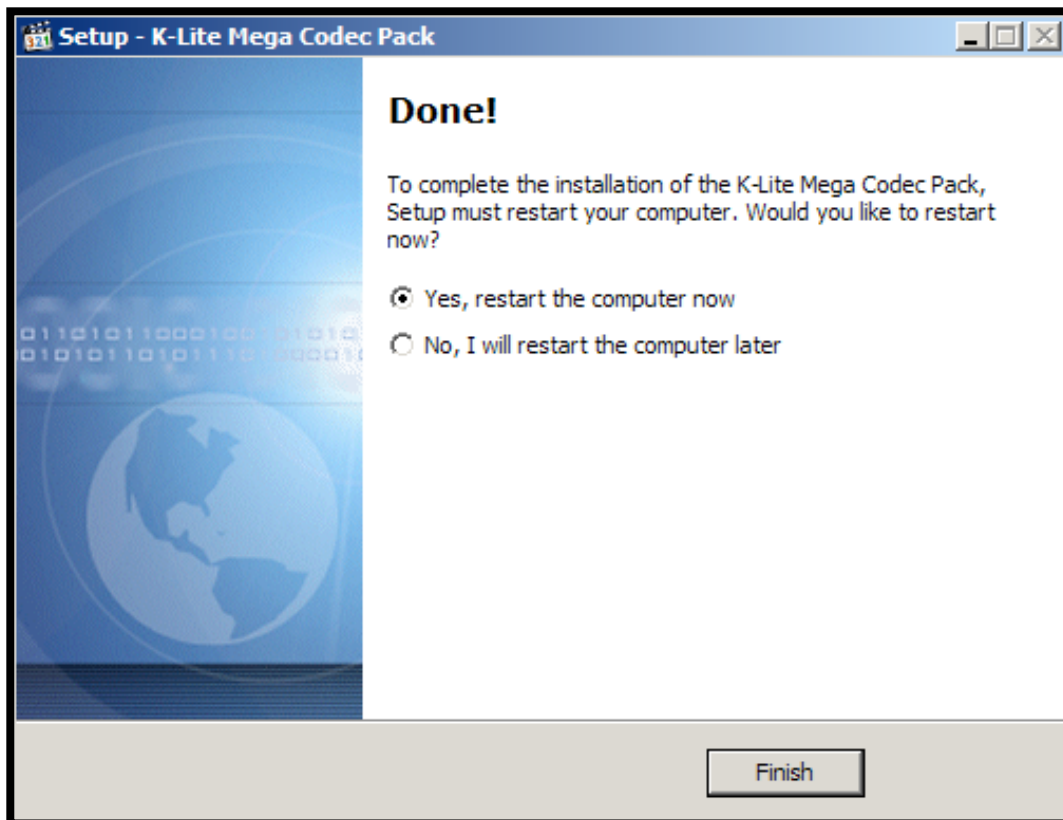
#5-10 Click “Next” on the next six screens. You don’t need to make any changes to these settings.



#11 & 12 Once you're sure you're ready to install (which you should be if you followed the instructions), click the "Install" button and wait for the installation to finish.

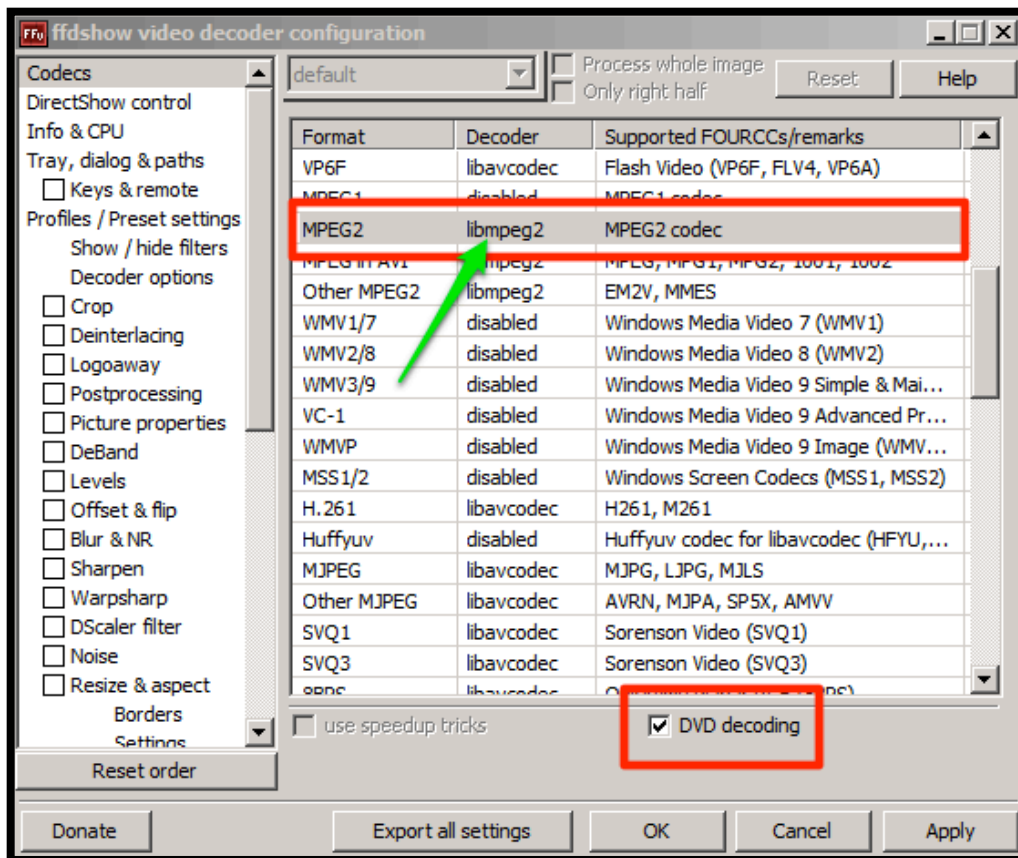


#13 Congratulations! You just installed K-Lite Mega Codec Pack. If you're ready to restart your computer now, choose that option. If you're in the middle of working on other stuff, select "No, I will restart the computer later." After you made your selection, click "Finish" and your computer will either restart or K-Lite will close.



Advanced Tip: If you find you are constantly having trouble with DVDs playing in ProPresenter, there is one additional setting in K-Lite that you can tweak. To get into the advanced tools of K-Lite click on **Start>All Programs>K-Lite Codec Pack>Configuration>ffdshow video decoder**. This will open up part of the K-Lite pack that allows you to turn on and off certain portions of codecs. There is only one change that you might need to make if you have issues with DVD playback.

Scroll down a few lines in the configuration window on the right until you see MPEG2 in the “Format” column. The second column is where you select the type of Decoder to use. By default, this is going to say “disabled” in the MPEG2 line. Click on “disabled” and select **libmpeg2** from the options. Also make sure that the check box next to “DVD decoding” is marked.



A lot of DVDs are commonly encoded with a form of MPEG2, and generally if you have playback issues, this setting will correct those problems.

::the end