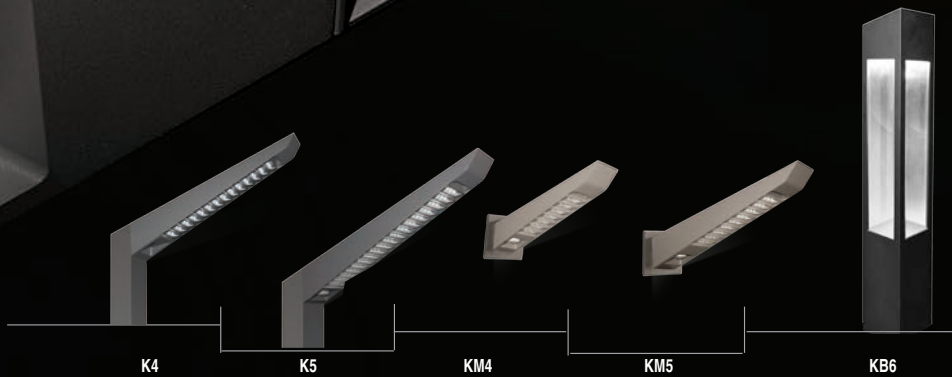


KICK™

CONTEMPORARY URBAN LUMINAIRES



Next
Generation
LUMINAIRES



K4

K5

KM4

KM5

KB6



architectural
arealighting
HUBBELL
Lighting

DESIGN | TECHNOLOGY

The award winning Kick™ is a synergy between architecture, lighting, and technology.

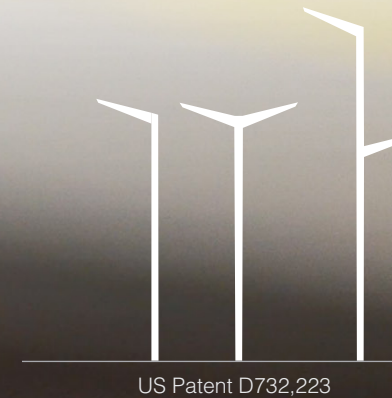
Attention to detail is unrivaled from seamless pole integration to controlled glare free illumination. The patented design and patent pending fully shielded optical system make Kick the first angled luminaire capable of IES distributions without any uplight. Kick Luminaires are available in 2 scales in both 4" and 5" wide versions as well as a matching bollard for a full suite of outdoor lighting solutions.

2
kick

Awards

Kick Shines: Recipient of 7 Prestigious Product Awards

- 2014 Architectural Products PIA
- 2014 Architectural Record Products Award
- 2014 IES Progress Report
- 2015 NGL Outdoor Recognition, Parking Lot Pedestrian Scale.
- 2015 LFI Design Excellence Award
- 2015 LFI Best of Category Parking, Roadway and Area Luminaires
- 2015 ADEX Gold Award



US Patent D732,223

Sleek design, contemporary style, simplicity, high performance optical system

3

ARCHITECTURAL AREA LIGHTING

FAMILY



4
kick



KicK Area – K4/K5

KicK Area is the ideal solution for the demands of architectural site lighting applications requiring minimal backlight, multi-fixture and staggered pole mounting configurations, selection of controls systems and unequaled daytime appearance.



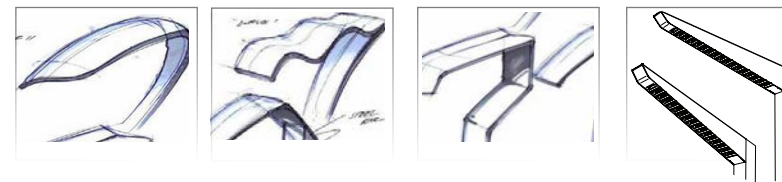
KicK Mini – KM4/KM5

KicK Mini was designed for a wide range of low mounting height and wall mount applications. The KM5 maintains the performance and features of the Area luminaires while KM4 is the most unobtrusive, compact profile and blends into the environment.



KicK Bollard – KB6

KicK Bollard brings best in class performance and technology with optics capable of IES distributions or comfortable pixel free illumination. Every aspect of the bollard is both configurable and customizable, enabling it to be the ultimate low level luminaire.

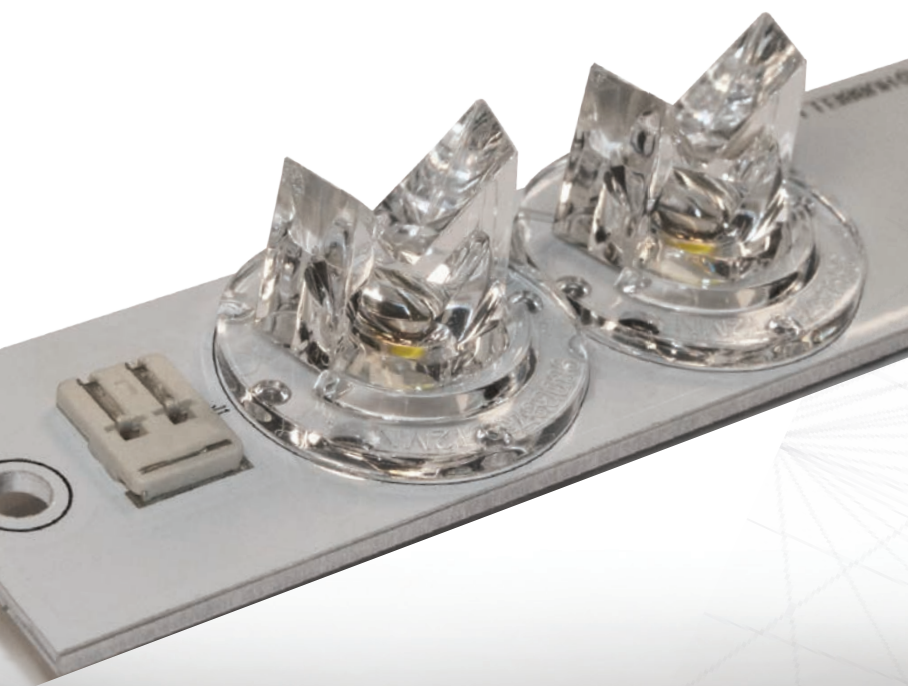


Design Process

AAL's in-house industrial design team leverages over 2 decades of experience in innovation and conceptual design. Attention to detail was key in translating the original vision into an award winning product.

5

ARCHITECTURAL AREA LIGHTING



OPTICAL | CONTROL

Kick™ was designed to combine high performance, precision optics, and multiple control options in a bold, angular compact profile. Kick embodies the essence of refinement for the most discriminating lighting designers and specifiers.

Optics

T2 Type II T3 Type III T4 Type IV

Optical Finish

MO Optics in Matte Black finish
FO Optics in fixture finish

Light Engine

K5 18000 series, 12000 series, 9000 series
K4 7000 series, 5000 series
KM5 7000 series, 5000 series
KM4 3000 series, 2000 series
KB6 2000 series, 1000 series

Color Temperature

3000 K 4000 K 5000 K

Controls

MCPCR ANSI C136.41 7-position receptacle
WIR wiScape connectivity
WIRSC wiScape + Motion Sensor
SCP Motion Sensor
SWP Sitesync

Control Options

	CONTROLS	K5	K4	KM5	KM4	KB6
	Motion Sensor	✓	✓	✓	✓	✓
	Wireless + Motion Sensor	✓	✓	✓	-	-
	Wireless	✓	✓	✓	-	✓
	ANSI C136.41 7-pin Dimming Receptacle	✓	✓	✓	✓	-

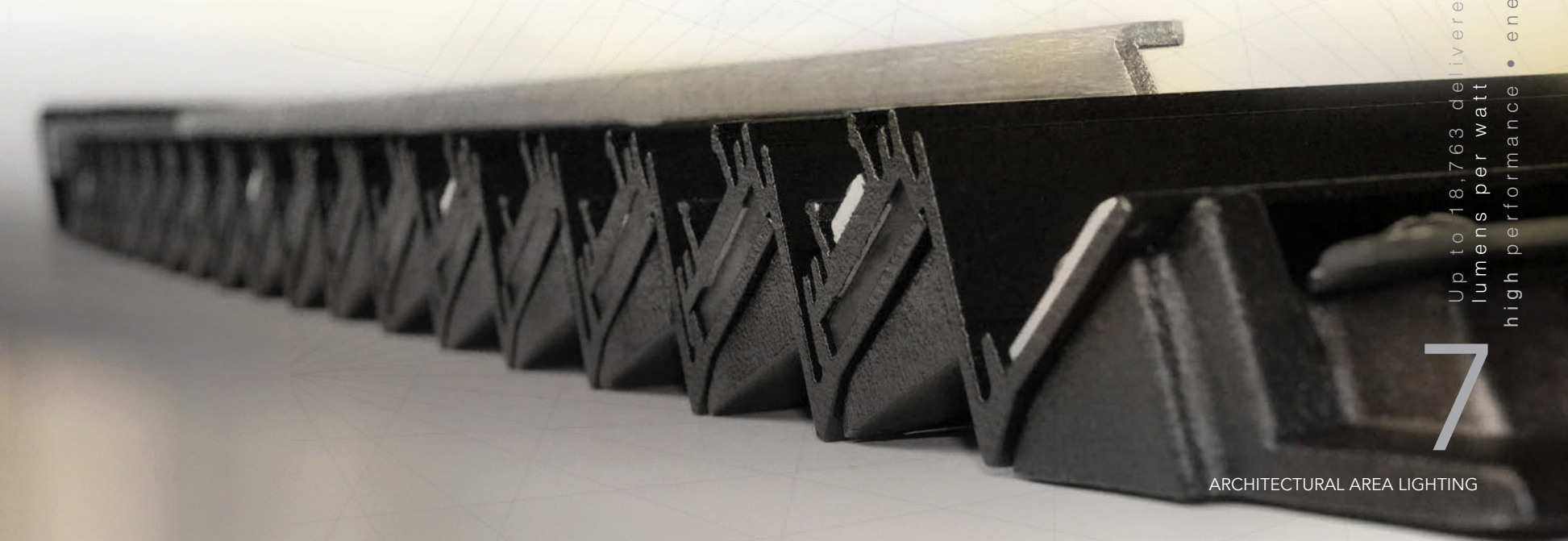
With today's focus on environmental sustainability and public safety, the Kick family now features integrated control options for improved energy savings and security

Sensor Options

California Title 24 Section 130.2(c)3

MODEL	KB6		KM4		KM5		K4		K5		
LIGHT ENGINE	10XX	20XX	20XX	30XX	50XX	70XX	50XX	70XX	90XX	120XX	180XX
WATTAGE	15W	30W	24W	33W	48W	68W	16W	64W	87W	122W	174W
Sensor Recommendation * (not required)	>75W and >24' Mounting height								(SCP or WIRSC)*		
	>75W and ≤24' Mounting height			(SCP)*	SCP	SCP or WIRSC	SCP or WIRSC	SCP or WIRSC	SCP or WIRSC		
	>30W and Non-pole mounted				SCP	SCP or WIRSC	SCP or WIRSC	SCP or WIRSC	SCP or WIRSC		
	≤30W and Non-pole mounted		(SC-MW)*	(SCP)*							

* Per exception 3 to section 130.2(c)3



ELEVATED SCALE



MOUNTING HEIGHT

30'
25'
20'
15'
10'
5'
0'

KB6 — **KM4** — **KM5** — **K4** — **K5**
Bollard Pole/Wall Mount Pole/Wall Mount Pole/Wall Mount Pole/Wall Mount

ARCHITECTURAL AREA LIGHTING

AREA MEDIUM K5 – SMALL K4

Reliable, uniform, low glare illumination
Type II, III and IV distributions
3000K, 4000K, 5000K CCT
Integral surge and thermal protection
0-10V dimming ready
IK10, 4G Vibration, IP66 optics
120-277, 347 and 480VAC input
Up to 18,763 delivered lumens

10
kick

ORDERING EXAMPLE – K5 & K4

1. LUMINAIRE	2. OPTICS	3. OPTICAL FINISH	4. LIGHT ENGINE	5. CONTROL	6. VOLTAGE	7. MOUNTING	8. POLE OPTIONS	9. FINISH
K51	T4	MO	12030	WIR	347	PS520-188	GFI	DB
K41	T3	FO	9040	SCP	347	SMK	–	VBU

1. MODEL

5" wide (K5) & 4" wide (K4) luminaires

K5	K4	
K51	K41	Single fixture
K52	K42	Two fixtures 180° apart
K53	K43	Three fixtures 90° apart
K54	K44	Four fixtures 90° apart

2. OPTICS

Distribution Type

T2	IES Type II
T3	IES Type III
T4	IES Type IV

3. OPTICAL FINISH

Standard white or may choose one.

MO	Optics in Matte Black finish
FO	Optics in fixture finish

4. LIGHT ENGINE

K5			
174W	122W	64W	
18050	12050	9050	5000K, 70CRI
18040	12040	9040	4000K, 70CRI
18030	12030	9030	3000K, 70CRI

K4

87W	46W	
7050	5050	5000K, 70CRI
7040	5040	4000K, 70CRI
7030	5030	3000K, 70CRI

590nm monochromatic amber and or custom lumen package also available. ¹

5. CONTROL

May choose one

SWP	SiteSync Pre-Commission ²
MCPCR	ANSI C136.41 7-position receptacle
WIR	wiScape connectivity
WIRSC	wiScape + motion sensor
SCP	Motion sensor

SCPREMOTE Handheld commissioning tool ⁴

6. VOLTAGE

120-277VAC input standard or may choose one
347 347VAC input
480 480VAC input

7. MOUNTING

Integral Pole

K5	K4	
PS510-188	PS410-188	10' luminaire height
PS512-188	PS412-188	12' luminaire height
PS514-188	PS414-188	14' luminaire height
PS516-188	PS416-188	16' luminaire height
PS518-188	PS418-188	18' luminaire height
PS520-188	PS420-188	20' luminaire height
PS525-250		25' luminaire height
PS530-250		30' luminaire height

Tenon Mount

TA23	Slips over a 2 3/8" / 60mm Ø x 4" / 102mm tall tenon
------	--

Side Mount

SMK	Mounts to the side of a square pole, K51 and K41 only
-----	---

Wall Mount

WMK	K51 and K41 only
-----	------------------

8. POLE OPTIONS

Twin mount at staggered heights

Mounting holes for a fixture at 180°, K51-...PS5..., PS4... only, may choose one

TS8	8' from bottom
TS10	10' from bottom
TS12	12' from bottom
TS14	14' from bottom
TS16	16' from bottom
TS18	18' from bottom

Pole Accessories

May choose one

GFI	GFCI Receptacle
RBC	Receptacle Box and Cover



9. FINISH

Standard Color

AGN	Antique Green
BL	Black
BLT	Matte Black
CRT	Corten
DB	Dark Bronze
DGN	Dark Green
GT	Graphite
LG	Light Grey
MAL	Matte Aluminum
MDB	Bronze Metallic
MG	Medium Grey
TT	Titanium
WH	Arctic White
WDB	Weathered Bronze
VBU	Verde Blue

Premium Color

SHK	Shamrock
SPP	Salt and Pepper
SFM	Seafoam
WCP	Weathered Copper
RAL	RAL 4 digit Color
CUSTOM	Custom Color

¹ Contact Factory

² Specify group and zone at time of order. See www.hubbellighting.com/sitesync for further details. Order at least one SiteSync interface Accessory SWUSB or SWTAB. Each option contains SiteSync License, GUI, and Bridge Node

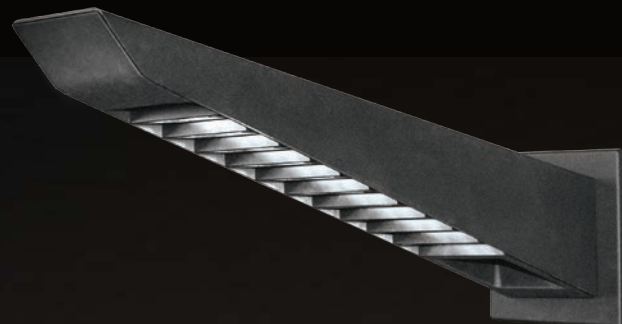
⁴ Handheld commissioning tool is required to separately configure or adjust any number of SCP sensors

11

ARCHITECTURAL AREA LIGHTING

MINI MEDIUM K5 – SMALL K4

Reliable, uniform, low glare illumination
Type II, III and IV distributions
3000K, 4000K, 5000K CCT
Integral surge and thermal protection
0-10V dimming ready
IK10, 4G Vibration, IP66 optics
120-277, 347 and 480VAC input
Up to 7,939 delivered lumens



WMK
Wall Mount

12
kick

ORDERING EXAMPLE – KM5 & KM4

1. LUMINAIRE	2. OPTICS	3. OPTICAL FINISH	4. LIGHT ENGINE	5. CONTROL	6. VOLTAGE	7. MOUNTING	8. POLE OPTIONS	9. FINISH
KM51	T4	MO	7030	WIR	347	PS510-188	GFI	DB
KM42	T3	FO	3040	SCP	–	SMK	–	VBU

1. MODEL

5" wide (KM5) & 4" wide (KM4) luminaires

KM5	KM4	
KM51	KM41	Single fixture
KM52	KM42	Two fixtures 180° apart
KM53	KM43	Three fixtures 90° apart
KM54	KM44	Four fixtures 90° apart

2. OPTICS

Distribution Type

T2	IES Type II
T3	IES Type III
T4	IES Type IV

3. OPTICAL FINISH

Standard white or may choose one.

MO	Optics in Matte Black finish
FO	Optics in fixture finish

4. LIGHT ENGINE

KM5 70W	KM4 33W	
7050	3050	5000K CCT, 70CRI
7040	3040	4000K CCT, 70CRI
7030	3030	3000K CCT, 70CRI

KM5 50W	KM4 24W	
5050	2050	5000K CCT, 70CRI
5040	2040	4000K CCT, 70CRI
5030	2030	3000K CCT, 70CRI

590nm monochromatic amber and or custom lumen package also available. ¹

5. CONTROL

May choose one

MCPCR	ANSI C136.41 7-position receptacle
WIR	wiScape connectivity
WIRSC	wiScape + motion sensor
SCP	Motion sensor

SCPREMOTE Handheld commissioning tool ⁴

6. VOLTAGE

120-277VAC input standard or may choose one
347 347VAC input
480 480VAC input

7. MOUNTING

Integral Pole

KM5	KM4	
PS510-188	PS410-188	10' luminaire height
PS512-188	PS412-188	12' luminaire height
PS514-188	PS414-188	14' luminaire height
PS516-188	PS416-188	16' luminaire height
PS518-188	PS418-188	18' luminaire height
PS520-188	PS420-188	20' luminaire height

Tenon Mount

TA23	Slips over a 2 3/8" / 60mm Ø x 4" / 102mm tall tenon
------	--

Side Mount

SMK	Mounts to the side of a square pole, KM51 and KM41 only
-----	---

Wall Mount

WMK	KM51 and KM41 only
-----	--------------------

8. POLE OPTIONS

Twin mount at staggered heights

Mounting holes for a fixture at 180°, KM51-..., KM41-..., PS5-..., PS4-... only, may choose one

TS8	8' from bottom
TS10	10' from bottom
TS12	12' from bottom
TS14	14' from bottom
TS16	16' from bottom
TS18	18' from bottom

Pole Accessories

May choose one

GFI	GFCI Receptacle
RBC	Receptacle Box and Cover



9. FINISH

Standard Color

AGN	Antique Green
BL	Black
BLT	Matte Black
CRT	Corten
DB	Dark Bronze
DGN	Dark Green
GT	Graphite
LG	Light Grey
MAL	Matte Aluminum
MDB	Bronze Metallic
MG	Medium Grey
TT	Titanium
WH	Arctic White
WDB	Weathered Bronze
VBU	Verde Blue

Premium Color

SHK	Shamrock
SPP	Salt and Pepper
SFM	Seafoam
WCP	Weathered Copper
RAL	RAL 4 digit Color
CUSTOM	Custom Color

¹ Contact Factory

⁴ Handheld commissioning tool is required to separately configure or adjust any number of SCP sensors

13

ARCHITECTURAL AREA LIGHTING

INTEGRAL POLE MOUNTING

Single fixture configurations can be configured for a Twin Stagger for any size of Kick to be mounted at a lower mounting height

Kick may be scaled in length, width, mounting height, lumen package and fixture quantity to cover a wide range of applications

14
kick

K41/K51
Single

K41/K51
Single + Staggered Twin
K41/K51 at 180°

K42/K52
Twin
Two fixtures at 180°

K43 / K53
Triple
Three fixtures at 90°

K44 / K54
Quad
Four fixtures at 90°

15

ARCHITECTURAL AREA LIGHTING

BOLLARD KB6

Reliable, uniform, low glare illumination
Type II, III, IV and V distributions
3000K, 4000K, 5000K CCT
Motion Sensor and Wireless Connectivity
Customizable Shielding
Integral surge and thermal protection
0-10V dimming ready
IK07, 4G Vibration, IP66
120-277, 347 and 480VAC input
Up to 2,451 delivered lumens

KB6-YD-BCD
Diffused Lens, Shielding on 3 sides

KB6-Yx
Clear Lens, IES Distributions

ORDERING EXAMPLE – K5 & K4

1. LUMINAIRE 2. OPTICS 3. SHIELDING 4. LIGHT ENGINE 5. CONTROL 6. VOLTAGE 7. COLORS
KB6 Y4 A 2030 WIS 347 TT

1. MODEL

KB6 6" square x 42 OAH bollard

2. OPTICS

Y2 IES Type II, clear lens
Y3 IES Type III, clear lens
Y4 IES Type IV, clear lens
Y5 IES Type V, clear lens
YD Symmetric distribution, diffused lens

3. SHIELDING

Optional may choose from 1 to 3 shielding options from options A, B, C, D or you may choose HSS option.

A Short side closed
B Side 90° counterclockwise from short side closed
C Side 180° counterclockwise from short side closed
D Side 270° counterclockwise from short side closed
HSS House side shield

4. LIGHT ENGINE

2050 5000K CCT, 30 watts
2040 4000K CCT, 30 watts
2030 3000K CCT, 30 watts
1050 5000K CCT, 15 watts
1040 4000K CCT, 15 watts
1030 3000K CCT, 15 watts

590nm monochromatic amber and or custom lumen package available by request. ¹

5. CONTROL

May choose one

SC-MW Microwave Sensor control
WIR wiScape Connectivity
BPC Button Type Photocell

6. VOLTAGE

120-277VAC input or may choose one.

347 347VAC input
480 480VAC input

7. FINISH

Standard Color

AGN Antique Green
BL Black
BLT Matte Black
CRT Corten
DB Dark Bronze
DGN Dark Green
GT Graphite
LG Light Grey
MAL Matte Aluminium
MDB Bronze Metallic
MG Medium Grey
TT Titanium
WH Arctic White
WDB Weathered Bronze
VBU Verde Blue

Premium Color

SFM Seafoam
WCP Weathered Copper
SHK Shamrock
SPP Salt and Pepper
RAL RAL Color
CUSTOM Custom Color

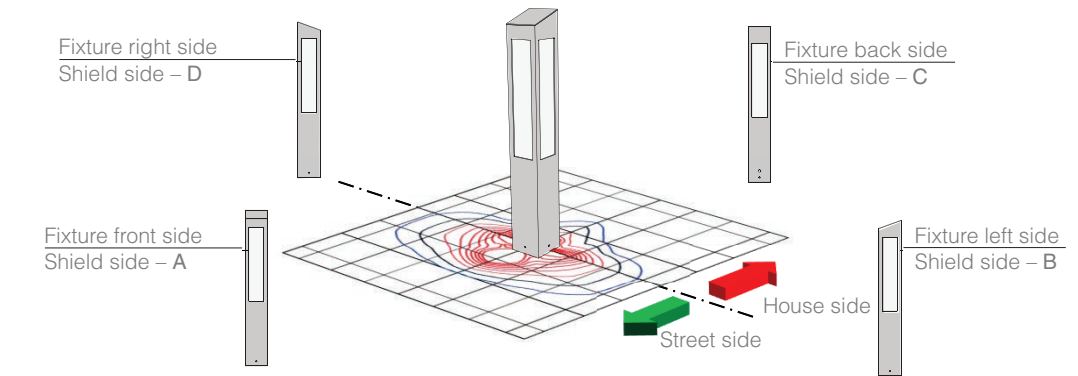
8. OPTIONS

BBU Battery Backup ³

¹ Contact factory

² House side shield assemblies to optical lens and is independent of outer housing

³ 120-277 VAC input only



Housing and optical distribution are independently field rotate-able in 90° increments. Default factory orientations shown above.

* Contact factory for custom housing designs

DESIGN FREEDOM

All sides of the bollard maybe uniquely tailored to a project or theme. *



18

19





701 Millennium Blvd.
Greenville, SC 29607
hubbellighting.com

ALERA LIGHTING
ARCHITECTURAL AREA LIGHTING
BEACON PRODUCTS
COLUMBIA LIGHTING
COMPASS LIFE SAFETY
DUAL-LITE
HEALTHCARE SOLUTIONS
HUBBELL CONTROL SOLUTIONS
HUBBELL INDUSTRIAL LIGHTING
HUBBELL OUTDOOR LIGHTING
KIM LIGHTING
KURT VERSEN
LITECONTROL
PRECISION-PARAGON [P2]
PROGRESS LIGHTING
SECURITY LIGHTING SYSTEMS
SPAULDING LIGHTING
WHITEWAY



KICK™ FAMILY