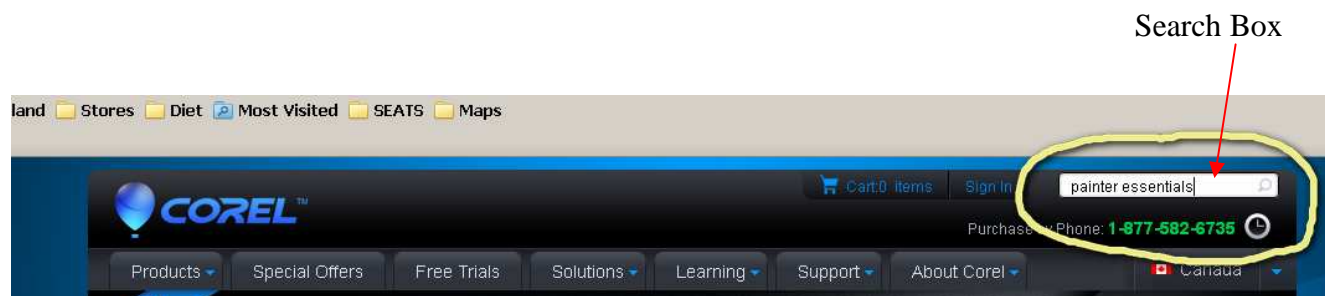


Kanata Seniors Centre – Digital Camera Club

Corel Painter Essentials 4 – December 2012

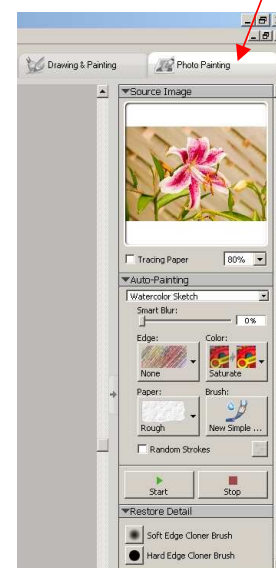
Corel Painter Essentials 4 is available for download and offers a fully functional 60 day trial version. The easiest way is to go to corel.com and enter “painter essentials” in the search box – then press enter or you can order a boxed version by calling the phone number just below the search box.



Once downloaded and installed, the program is ready to go. Simply do a File, Open and select the image you want to play with. Easiest way to start is to select the Photo Painting option, in the auto painting panel from the dropdown box, select the style you want to try out, then, press the start button. Wait for the “start” button to “un-stick”.

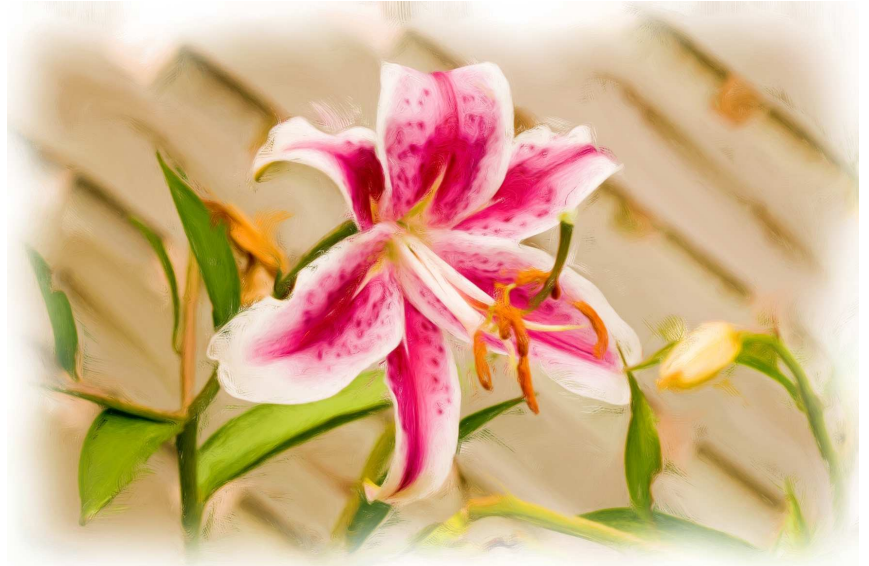
Notes: On my system, (Windows XP), the program will not multi-task – in other words if you alt-tab to some other program, it will stop processing and not restart, so find out how your system is operating and see if you have to start the process and wait for it. Also, the default options set for the style selected sets the options for Edge, Color, Paper and Brush as well as the options for Brush size, Opacity and Grain – each of which can have an impact on your results. So, if you find a great recipe that you custom tweak, record your settings as there is no way in the program to “auto-remember” them. Samples for each of the styles available in the drop-down box are shown in the next 5 pages.

Photo Painting





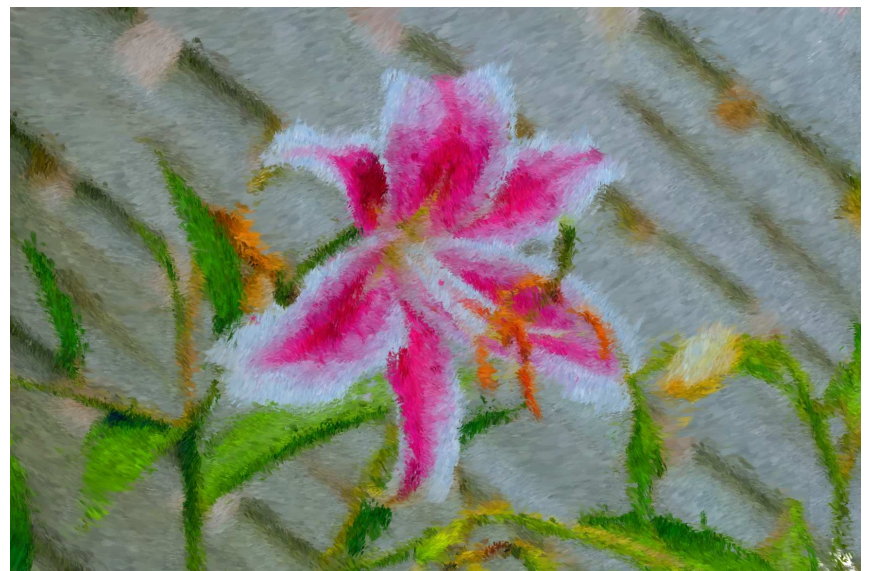
Original.jpg



01-Oil Painting.jpg



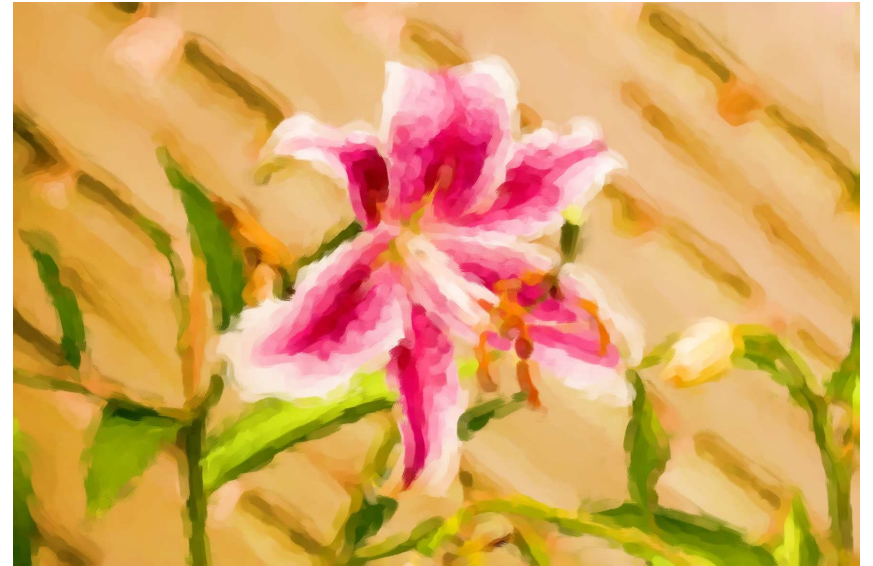
02a-Classical Oil Painting.jpg



03-Impressionist.jpg



04-Seurat.jpg



05-Modern.jpg



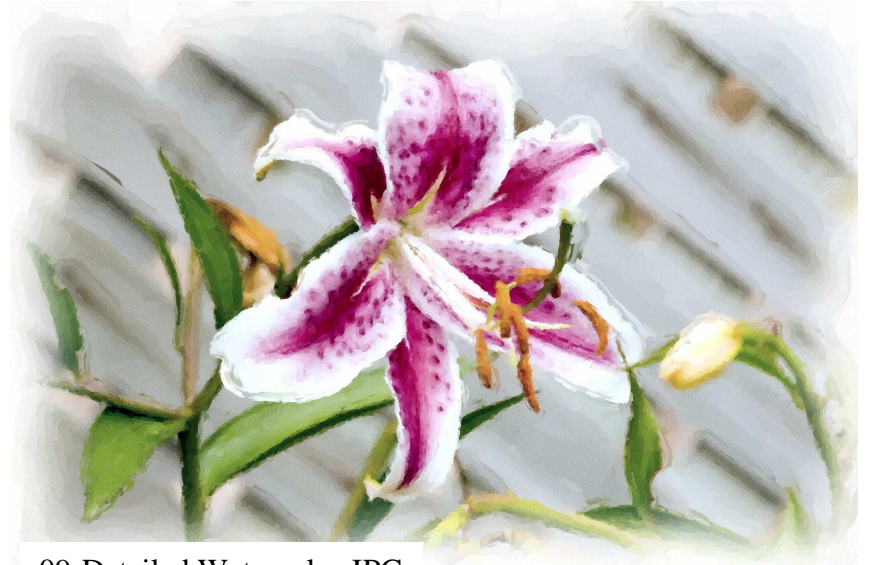
06-Illustration.JPG



07-Gouache.JPG



08-Simple Watercolor.JPG



09-Detailed Watercolor.JPG



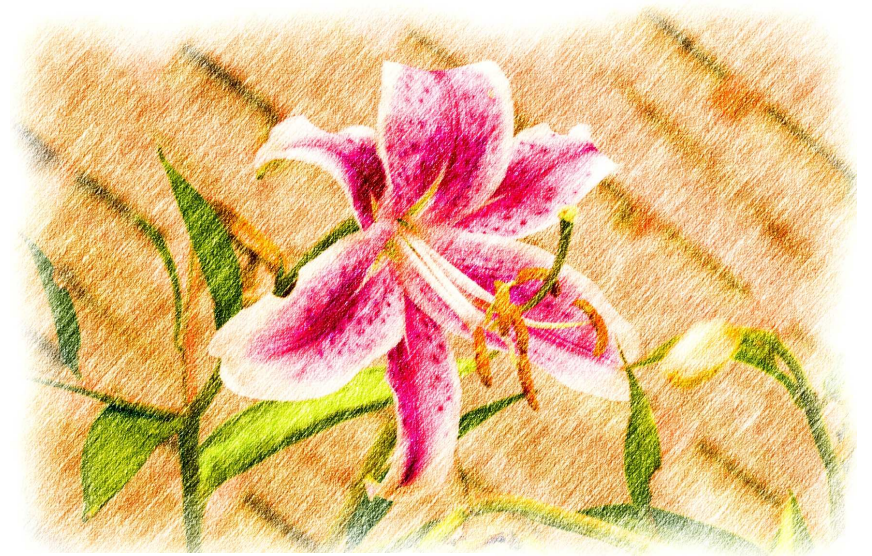
10-Wet in Wet Watercolor.JPG



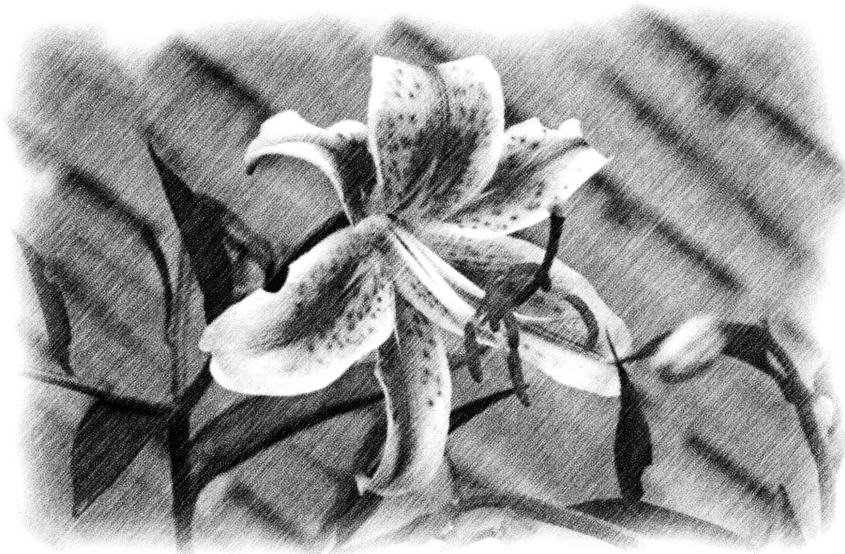
11-Watercolor Sketch.JPG



12-Pan and Ink Drawing.JPG



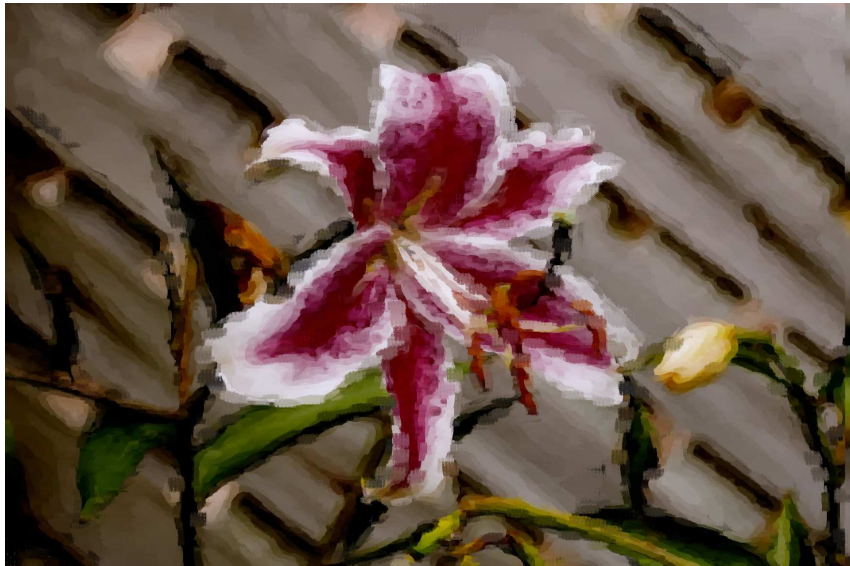
13-Colored Pencil Drawing.JPG



14-Pencil Drawing.JPG



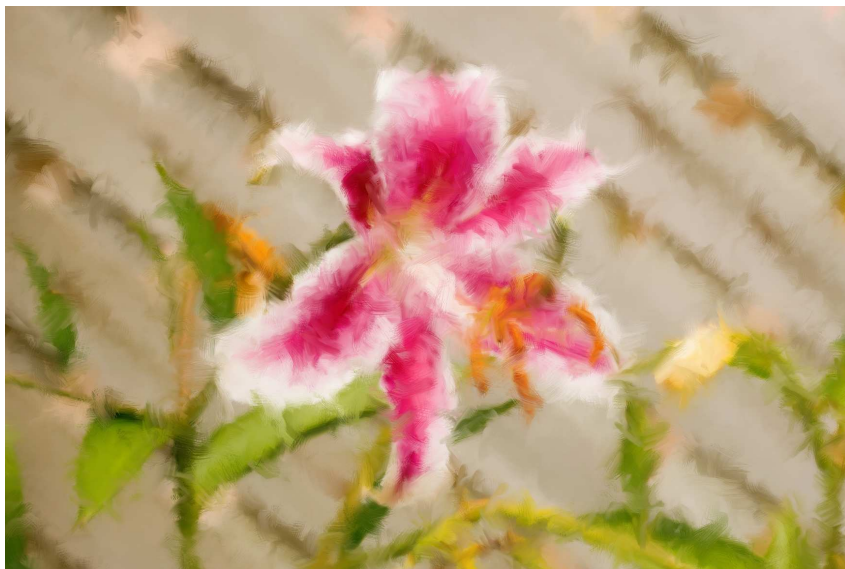
15-Chalk Drawing.JPG



16-Pastel Drawing.JPG



17-Underpainting.JPG



18-Essentials 3 Defaults.JPG

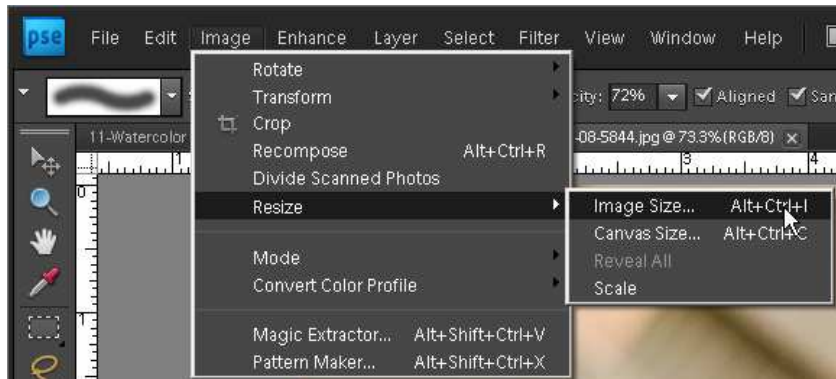
Other Points and Notes.

1. The Help, Guidebook menu item opens up a 130 page manual on how to use the program. This guidebook is stored in

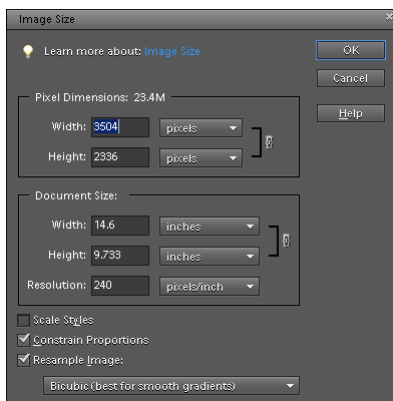
C:\Program Files\Corel\Corel Painter Essentials 4\Help\Painter Essentials 4.pdf and can be accessed from there or copied out to your My Documents – I have mine stored in My Documents\My Manuals

2. If you are working on a “large” high resolution image, it can take a long time to process. Unless you are printing large size, you don’t need a high resolution image. For testing purposes, I use Photoshop Elements to down size the image to about 1 Mb and the process is a lot faster.
3. You can save the resulting product in the native Painter Essentials format (RIFF) or as JPEG, TIFF and even Photoshop PSD files. In the Photoshop PSD file format, both the original image AND the completed result are available as layers.
4. You can touch-up the result of running an option – see page 22 of the guidebook. Personally, I have had limited success with that and prefer to save the image as a PSD file and then take it to Photoshop to finish off with.

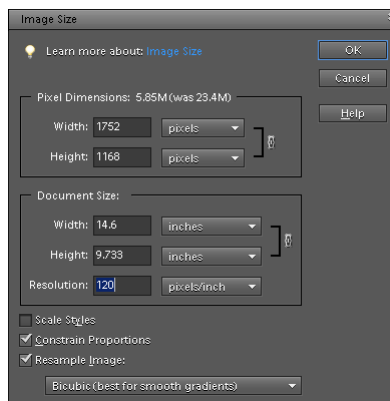
5. Resizing Images. Lots of ways to do this – mine is to open the image and do an Image, Resize, Image Size and reduce the pixels per inch box with other settings like this. This will reduce the image size by 50% or better.



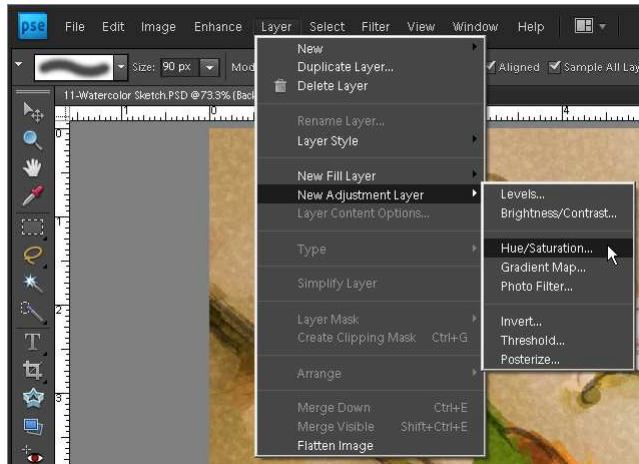
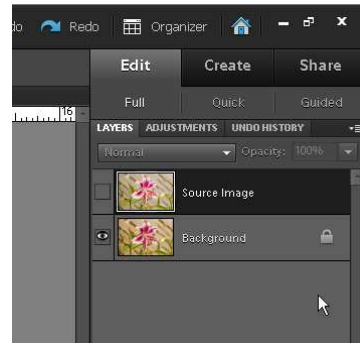
Before



After

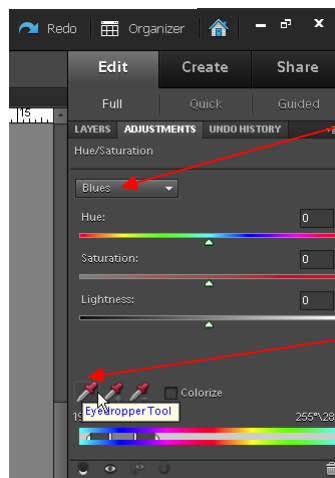
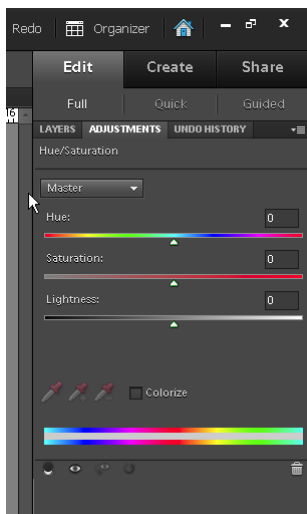


- Once the PSD file is opened up in Photoshop, the layer stack will look like this. One of my favourite things to play with is tweaking the colours. In this case I want to change/enhance the red colours in the blossom. To do that, do a Layer, New Adjustment Layer, Hue and Saturation – and click OK



to produce,

then



Select from the drop-down list any color other than red – the target color we want to change – in this case Blue is selected

Click on the first eyedropper tool to select is, then click on the red blossom area of the picture

-down will change After clicking in the image. The selected colour in the dropdown will change to the colour selected by the use of the eyedropper tool. Now, to change the colour of the selected colour drag on the arrow indicator on the Hue line. This will cause the colour of the reds to be shifted up or down. If necessary, change the blend mode of the adjustment layer to Color and use the layer mask to isolate the changes to the red content only.

Before



After

