

**Kerr County 4-H
2017
Major Stock
Show Season
Program**

**Southwestern Exposition & Livestock Show
Fort Worth**

January 13th - February 4th, 2017

www.fwssr.com

**Hill Country District Junior Livestock Show
Kerrville**

January 15th - January 21st, 2017

www.hcdjls.org

**San Antonio Stock Show & Rodeo
February 9th – February 26th, 2017**

sarodeo.com

**San Angelo Stock Show & Rodeo
February 3rd – February 19th, 2017**

www.sanangelorodeo.com

**Houston Livestock Show & Rodeo
March 7th - March 26th, 2017**

hlsr.com

**Star of Texas Rodeo & Fair
Austin**

March 11th – March 25th, 2017

www.staroftexas.org

This booklet is provided only as a tool to assist you in planning for the major stock shows. Exhibitors are encouraged to use the websites listed to confirm any information concerning the major shows.

Ft. Worth

Lambs – Todd Wise, CO
Goats – Dr. Andy Laughlin, TX
Barrows – Kane Causemaker, IL
Steers – Doug Husfeld, TX
Heifers - Kevin Jensen, KS; Gerald Young, TX; Kyle Perez, NM
Breeding Sheep—Junior— Billy Wade, IN
Open— Warren Cude, TX

San Antonio Livestock Show

Lambs – Dr. Kelly Bruns, NE
Goats – Brandon Callis, OK
Barrows - Brian Anderson, KS (Hamp, York, Poland, Cross and Dark Cross)
Gary Childs, GA (Spot, Landrace, Berk, Chester, Duroc)
Steers – Kevin Jansen, KS
Breeding Goats—Boer - Nick Hammett, MO
Angora - Dr. Andy Laughlin, TX
Breeding Sheep – Junior— Craig Beckmier, IL
Open— TBA
Breeding Heifer — Wes Hudson, AR; Mike McGuire, AL; Cody Sankey, IN;
Greg Boudin, TX; Keith Dubose, TX
Breeding Swine – Junior— Kade Hummell, KS
Open— James Beckman, CA

San Angelo Stock Show

Lambs – Dr. Mark Hoge, IL
Goats – Jamie Osbourn, TX
Texas Stars Wether Doe - Slayton Strube, TX
Youth Boer Goats - Kurt Henry, TX
Barrows – TBA
Steers – Dr. Mark Hoge, IL
Heifers—Mark McClintock, TX; Chris Mullinix, KS
Breeding Sheep—Travis Hoffmann, ND
Open Breeding Goats - Brian Faris, TX
Ewe Lamb Futurity—TBA
Breeding Gilts—TBA
CTBR Texas Star Gilts - Placing - TBA
Sorting - TBA
Angora Goats—Jason Bannowsky, TX

Houston Livestock Show

Lambs – Kyle Smith, TX
Goats – Bryan Bernhard, TX
Barrows – TBA
Steers – Shane Bedwell, MO
Heifers – Tim Fitzgerald, PA; Mark Core, IA; Jary Douglas, OK
Breeding Gilts - Randy Shipley, OH

Star of Texas Fair

Lambs – Chad Coburn, TX
Goats – Kevin Newsom, TX
Barrows – Miles Toenyas, IL
Steer – Jack Ward, MO
Heifers—Chris Cassady, IL (American); Tyler Cates, IN (British/Continental)

Hill Country District Junior Livestock Show

Breeding Gilts: Arrive: County 10 am Sunday, January 15th
 District 12 pm Sunday, January 15th
 Weigh-In: County 1 pm Sunday, January 15th
 District 6 pm Sunday, January 15th
 Weights and registration papers turned in
 Show: County 3 pm Sunday, January 15th
 District 9 am Monday, January 16th

Angora Goats Arrive: County 1 pm Sunday, January 15th
 State 3 pm Sunday, January 15th
 Show County 3 pm Sunday, January 15th
 State 8 am Monday, January 16th

Breeding Sheep Arrive County 12 pm—4 pm Tuesday, January 17th
 State 12 pm—7 pm Tuesday, January 17th
 Show County 7 pm Tuesday, January 17th
 State 8 am Wednesday, January 18th

Lambs & Goats Arrive County 8 am Wednesday, January 18th
 District 12 pm Thursday, January 19th
 Weigh-In County 4 pm Wednesday, January 18th
 District 3 pm Thursday, January 19th
 Show County Lambs: 7 am Thursday, January 19th
 Goats: 9 am Thursday, January 19th
 District 7 am Friday, January 20th

Barrows Arrive County 8 am Wednesday, January 18th
 District 9 am Thursday, January 19th
 Weigh-In County 6 pm Wednesday, January 18th
 District 4 pm Thursday, January 19th
 Show County 8 am Thursday, January 19th
 District 7 am Friday, January 20th

Steers Arrive County 8 am Wednesday, January 18th
 District 12 pm Thursday, January 19th
 Weigh-In County 5 pm Wednesday, January 18th
 District 5 pm Thursday, January 19th
 Show County 8 am Thursday, January 19th
 District 8 am Friday, January 20th

Heifer weigh-in & show immediately following steers both days

DEADLINE FOR AUCTION SIGN UP FOR AUCTION ANIMALS IS THIRTY (30) MINUTES AFTER THE LAST MARKET DIVISION HAS BEEN JUDGED.

Auction 1 pm Saturday, January 21st

Entry Fees - \$10.00 for county show. \$25.00 for District show. **Each exhibitor, per club, will be charged \$5.00 for an office fee.**

Lambs - May enter 6 total with no more than 2 entries per breed. 100 lb minimum, 160 lb maximum, 85 lb minimum for Southdowns. No pre-set weight breaks. Must be shorn slick from knee & hock up before arrival on the grounds.

Judges: County - Billy Bob Moczgamba, District - Gene Winn

Goats - County entrants may enter 4 total with no more than 2 per class. 65 lb minimum, 115 lb maximum. Goats with hair over 3/8" will be sifted. Must be disbudded or dehorned. Any scurs longer than 1" in length will be disqualified. County show will have 9 classes. District will have 15 classes.

Judges: County - Kyle Strickland, District - Billy Bob Moczgamba

Barrows - May enter 6 total with no more than 2 entries per breed. 220 lb minimum, 280 lb maximum. **Judges:** County - TBA District - TBA

Steers - May enter 6 total with no more than 2 per breed. 950 lb minimum, no max. No British Crosses. **Judges:** County - Brandon Callis, District - Jake Franke

Heifers - All registration papers must be submitted by 6:00 p.m. Thursday, January 19th. Must show ownership on or before November 1, 2016. **Judges:** County - Brandon Callis, District - Jake Franke

Angoras - Commercial: May enter 2 per class. A group will consist of 3 goats of the same class & must submit a separate entry. \$20.00 for each group. Must be machine shorn on or after August 1, 2016.

Registered: All registration papers must be submitted between 3:00 - 6:00 p.m. Sunday, January 15th. May enter 2 per class. Must show ownership on or before November 1, 2016. Must be machine shorn on or after August 1, 2016. Must show 2 of the 3 accepted methods of identification.

Judges : County - TBA, District - Eddie Holland

Breeding Sheep - May enter 2 per class. All registration papers must be submitted between 12:00 - 7:00 p.m. Sunday, January 17th.

Judges : County - Dale Brandenberger, District - Aaron Renfroe

Breeding Swine - May enter 6 total with no more than 2 per class. Must have been farrowed between July 1, 2016 & September 10, 2016. Registration papers must be submitted by 6:00 p.m. on Sunday, January 15th. Must show ownership on or before December 1, 2016. Entries can not be dual entered in the Non-pedigreed Swine Show. **Judges:** County - TBA, District - TBA

Non-pedigreed breeding swine - Limited to 2 entries. 200 lb. minimum, no max. There will be 3 classes. 10 lb. weigh-back. Entries can not be dual entered in the Registered Swine Show. **Judges:** County - TBA, District - TBA

H.C.D.J.L.S. Weight Breaks

Swine	2016-District	2016-County	2015-District
Duroc	220-242 243-262 263-280	227-240 241-259 262-280	220-252 253-269 270-280
Hampshire	220-240 241-254 258-280	220-232 236-251 253-280	220-238 239-257 258-280
Yorkshire	220-240 241-254 256-280	220-232 239-254 257-276	220-249 250-266 267-280
Dark OPB	220-246 248-280	220-252 256-275	220-243 244-280
Light OPB	220-251 256-280	220-244 256-275	220-255 256-280
Crossbred	220-231 232-244 245-260 261-280	220-229 231-239 240-256 257-280	220-242 243-258 259-280
Non-Pedigreed Gilts	200-228 229-256 257-311	200-235 236-256 257-290	200-232 233-265 266-308

Goats	2016-District	2016-County	2015-District
	65-67	65-67	65-75
	68-71	68-72	68-71
	72-73	73-75	72-74
	74-75	76-80	75-77
	76-77	81-83	78-79
	78-80	84-88	80-81
	81-82	89-92	82-84
	83-85	93-99	85-87
	86-88	100-111	88-90
	89-91		91-94
	92-94		95-97
	95-98		98-100
	99-101		101-105
	102-106		105-109
	107-115		110-115

Lamb	2016-District	2016-County	2015-District
Southdown	100-115 116-125 126-150	103-115 116-120 124-135	22-116 117-130 131-145
Finewool	100-117 118-125 126-133 134-156	115-123 125-135 138-153	103-120 121-127 128-134 135-155
Finewool Cross	100-130 131-139 140-146 147-160	109-129 130-138 141-147 152-159	107-125 128-137 138-147 139-160
Medium Wool	100-133 135-144 145-151 152-160	102-129 131-140 144-148 149-159	112-130 131-140 141-150 151-160

Steers	2016-District	2016-County	2015-District
British	1010-1167 1250-1287 1310-1464	1010-1102 1130-1167 1280-1433	1033-1072 1203-1237 1297-1355 1365-1476
American	1060-1165 1220-1235 1320-1411	1060-1113 1150-1235 1250-1263	951-1139 1241-1278 1304-1532
European	950-1134 1140-1197 1210-1242 1250-1292 1310-1345 1350-1476	1030-1152 1170-1242 1250-1332 1360-1476	982-1089 1118-1194 1206-1257 1273-1306 1364-1448

**THIS THING IS FORT WORTH STOCK SHOW & RODEO
LEGENDARY**

- Barrows:** Arrive 3:00pm Monday, January 30th—9:00am Wednesday, February 1st
 Weigh-In by 10:00am Wednesday, February 1st
 Show 8:00am Thursday, February 2nd
 (Black/OPB, Duroc, Hampshire, White/OPB)
 8:00am Friday, February 3rd
 (Yorkshire followed by Crossbreds)
 Release Terminal
- Breeding Sheep:** Arrive 8:00am, Thursday, January 19th - 10:00am Saturday, January 21st
 Show 8:00am & 1:00pm Monday, January 23rd
 Release 1:00pm Monday, January 23rd
- Steers:** Arrive 7:00am—6:00pm Tuesday, January 31st
 Weigh-In by 8:00am Wednesday, February 1st (Angus, Hereford, Polled Hereford, Shorthorn, and American Breeds and Crossbreds)
 by 10:00am Wednesday, February 3rd for European Crossbreeds & Other Breeds
 Show 8:00am Thursday, February 2nd (Angus, Hereford, Polled Hereford, Shorthorn, American Crossbred Classes and Light Weight European Crossbred Classes)
 8:00am Friday, February 3rd (Medium and Heavy Weight European Crossbred Classes)
 Release 6:00 am, Friday, February 3rd
- Lambs & Goats:** Arrive 8 am, Wednesday, January 25th—6 pm Thursday, January 26th
 Weigh-In by 12:00noon on Friday, January 27th
 Show 10 am Saturday, January 28th (Light and Medium Weight Classes)
 10:00am Sunday, January 29th (Heavy Weight Classes)
 Release 6:00 am Sunday, January 29th
- Auction:** Junior Sale of Champions 9:00 am, Saturday, February 4th

Range & Pasture Plant ID Contest Saturday, January 21st
Junior Agricultural Mechanics Project Show 8:00am Saturday, January 14th

Lambs: \$20.00 per head. Exhibitors may enter 8 wether lambs, but no more than 2 allowed in each weight class. 90 lbs. Minimum weight, southdowns 80 lbs. minimum, no maximum. 5lbs. weigh-back. **No tooth rule.** All lambs must be shorn to the skin with mechanical shears one week or less prior to arrival. **All champions and reserve champions must sell!**

Goats: \$20.00 per head. Exhibitors may enter only 1 wether goat. All goats must be shorn to the skin with uniform clip above the knee & hock joint. Minimum weight 50 lbs. **All weight Division Champions & Reserve Champions will sell!**

Barrows: \$20.00 per head. Exhibitors may enter only 1 barrow. 230 lbs. minimum, 270 lbs. maximum. 10 lb. tolerance allowed. All champions and reserve champions will sell. **Terminal Show.**

Steers: \$30.00 per head. Exhibitors may enter only 1 steer. Must have owned the steer prior to July 1st, 2016. Minimum weight 900 lbs. **The first, second, and any other steer designated at the discretion of the Show management will be reweighed. Any steer weighing more than 105 percent of its official weight will be disqualified.** Fans are NOT Allowed!!!!

Breeding Sheep: \$20.00 per head. Exhibitors may show 2 animals in each of the single classes, but will be restricted to only 1 entry in each group class. To be eligible for a group class, the animals must be entered and shown in a single class. Animals must be registered in the name of the exhibitor and must have been owned by the exhibitor prior to November 1, 2016, as evidence by the date of transfer to the breed association.

Passes: 1 complimentary pass per exhibitor. Additional passes \$30.00 each. Parking permits are \$40.00 each.

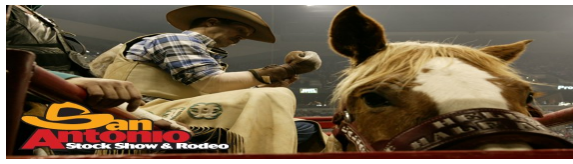
FORT WORTH WEIGHT BREAKS

STEER	2016	2015	2014	2013
ANGUS	900-1119 1120-1223 1224-1515	900-1144 1145-1287 1288-1444	1020-1202 1203-1232 1233-1540	900-1111 1112-1230 1230+
HEREFORD	900-1168 1169-1276 1277-1480	900-1156 1157-1279 1280-1465	1000-1163 1164-1298 1299-1599	900-1167 1168-1279 1280+
P HEREFORD	900-1160 1161-1260 1261-1440	900-1168 1169-1270 1271-1477	1040-1174 1175-1279 1280-1599	900-1182 1183-1289 1290+
SHORTHORN	900-1109 1110-1229 1230-1446	900-1105 1106-1230 1231-1449	944-1108 1109-1235 1236-1450	900-1112 1113-1243 1244+
ABC	900-1120 1121-1239 1240-1470	900-1128 1129-1250 1251-1482	903-1133 1134-1254 1255-1460	900-1152 1153-1288 1289+
EXOTICS	900-978 979-1027 1028-1057 1058-1091 1092-1127 1128-1159 1160-1183 1184-1224 1225-1269 1270-1355 1356-1420 1421-1580	900-986 987-1039 1040-1077 1078-1100 1101-1140 1141-1185 1186-1210 1211-1234 1235-1279 1280-1379 1380-1415 1516-1567	900-995 996-1063 1064-1093 1094-1104 1105-1139 1140-1167 1168-1199 1200-1230 1231-1280 1281-1366 1367-1410 1411-1675	900-990 991-1039 1040-1078 1079-1105 1106-1143 1144-1169 1170-1199 1200-1235 1236-1283 1284-1355 1356-1394 1395-1600

GOAT	2016	2015	2014	2013
	50-65 66-71 72-75 76-78 79-81 82-85 86-88 89-92 93-96 97-100 101-107	50-64 65-69 70-74 75-77 78-80 81-84 85-87 88-90 91-94 95-97 98-103	50-66 67-72 73-76 77-79 80-83 84-86 87-89 90-92 93-97 98-101 102-108	50-67 68-72 73-76 77-80 81-84 85-87 88-90 91-93 94-97 98-102 103-107

SHEEP	2016	2015	2014	2013
FINE WOOL	102-123 124-140 141-170	97-123 124-130 131-175	104-120 121-130 131-165	94-123 124-130 131-158
FINE WOOL X	103-137 138-150 151-179	108-135 136-145 146-196	94-129 130-140 141-178	114-129 130-144 145-168
MED WOOL	93-129 130-140 141-147 148-154 155-166 167-205	90-127 128-136 137-145 146-154 155-161 162-201	91-124 125-135 136-143 144-151 152-161 162-190	90-127 128-136 137-143 144-150 151-161 162-187
SOUTH DOWN	101-122 123-130 131-165	93-117 118-128 129-171	87-115 116-129 130-160	93-116 117-125 126-154
HAIR SHEEP	83-102 103-113 114-139	82-102 103-111 112-144	80-99 100-110 111-142	80-98 99-108 109-140

SWINE	2016	2015	2014	2013
BLACK OPB	230-244 245-265 266-270	230-249 250-267 268-270	230-250 251-267 268-270	230-254 255-269 270
DUROC	230-251 252-263 264-269 270	230-255 259-269 270 270	230-255 259-269 270 270	230-255 257-269 270 270
HAMPSHIRE	230-235 236-250 251-260 261-269 270	230-240 241-252 253-261 262-269 270	230-237 238-254 255-264 265-269	230-247 248-260 261-269 270
WHITE OBP	230-254 255-269 270	230-258 260-269 270	230-258 260-269 270	230-259 260-269 270
CROSS	230 231-242 243-250 251-254 255-261 262-265 266-269 270 270	230-232 233-244 245-254 255-262 263-267 268-269 270 270 270	230-232 234-244 245-254 255-262 263-267 268-269	230-239 240-249 250-257 258-264 265-269 270 270 270
YORKSHIRE	230-253 254-268 269-270	230-255 256-269 270	230-257 259-269 270	230-259 261-269 270



Goats	Arrive	3 am—12 noon Tuesday, February 14th
	Check In	8 am—3 pm Tuesday, February 14th
	Show	9 am Wednesday, February 15th (Division I & II) 9 am Thursday, February 16th (Division III & IV)
Lambs	Arrive	3 am—12 noon Tuesday, February 14th
	Check In	8 am—3 pm Tuesday, February 14th
	Show	8 am Wednesday, February 15th (Southdown, Fine Wool, & Cross) 8 am Thursday, February 16th (Medium Wool)
Barrows (Berk, D. Cross, Duroc, Hamp, Poland, Spot) (Chester White, Cross, Landrace, York)	Arrive	Group 1: 1 am—7 am Saturday, February 18th Group 2: 5 am—12 noon Tuesday, February 21st
	Check In	Group 1: 7 am—2 pm Saturday, February 18th Group 2: 7 am—3 pm Tuesday, February 21st
	Show	Group 1: 7 am Sunday, February 19th (Berkshire, Spot, Hampshire) Group 1: 7 am Monday, February 20th (Duroc, Poland, Dark Cross) Group 2: 7 am Wednesday, February 22nd (Chester, Landrace, York, Cross classes 85-90) Group 2: 7 am Thursday, February 23rd (Cross classes 91-110)
Steers (Simmental, Limousin, Maine-Anjou, Shorthorn, R. Angus, Angus, Hereford) (Charolais, Simbrah, Santa Gertrudis, Brangus, Brahman, ABC, Red Cross)	Arrive	7 am Monday, February 20th—5 am Tuesday, February 21st
	Check In	8 am—3 pm Tuesday, February 21st
	Show	8 am Wednesday, February 22nd 8 am Thursday, February 23rd 8 am Friday, February 24th (Black Cross, Other Cross)
Breeding Heifers (Brahman, Shorthorn, Red Brangus, Limousin, Charolais, Simbrah, ORB, Santa Gertrudis, Simmental) (Beefmaster, Red Angus, Brangus, Maine-Anjou, ARB, Hereford, Angus, Chianina)	Arrive	3 am—3 pm Tuesday, February 14th
	Check In	12 noon—6 pm Tuesday, February 14th 8 am—12 noon Wednesday, February 15th
	Show	8 am Thursday, February 16th 8 am Friday, February 17th
Breeding Gilts	Arrive	5 am—1 pm Wednesday, February 8th
	Check In	8 am—4 pm Wednesday, February 8th
	Show	7 am Thursday, February 9th (Duroc, Landrace, Hamp, Berk) 7 am Friday, February 10th (Spot, Chester, Poland China, York)
Junior Breeding Angora Goats	Arrive	9am—12:30 pm Wednesday, February 8th
	Check In	10 am—1 pm Wednesday, February 8th
	Show	following open show on Thursday, February 9th
Junior Breeding Boer Goats	Arrive	7 am—12 pm Thursday, February 9th
	Check In	10 am—2 pm Thursday, February 9th
	Show	following open show on Friday, February 10th
Junior Breeding Sheep	Arrive	7 am—12 pm Saturday, February 11th
	Check In	10 am—2 pm Saturday, February 11th
	Show	Sunday, February 12th following Wether Dam Show

Release:

Breeding Goats—Friday, February 10th, **must be out by 7 PM**

Breeding Sheep—Monday, February 13th, **must be out by 6:00 PM**

Breeding Heifers— Saturday, February 21st, **must be out by 10:00 AM**

Breeding Swine—Saturday, February 11th, **must be out by 8:00 PM**

Auction:

Lambs – 5:00 p.m., Thursday, February 23rd

Barrows - 4:00 p.m., Friday, February 24th

Steers – 10:00 a.m., Saturday, February 25th

Goats - 1:00 p.m., Thursday, February 23rd

Contests:

Wool Judging— 12:30 p.m., Saturday, February 11th

Sheep Skillathon—2:00 PM, Tuesday, February 14th

Livestock Judging—9:00 AM, Sunday, February 26th

Lambs: \$30.00 – May enter 1 wether lamb. **No Tooth rule.** Must be shorn slick to the skin above knee and hock joints before arrival. 100 lb minimum, 175 lb maximum. There will be a 5 lb. weigh-back. No pre-set weight breaks. **250 lambs will make the sale. Terminal Show.**

Goats: \$30.00 – May enter 1 wether goat. **No Tooth rule applies.** Horns must be blunt tipped before arrival. Must be shorn slick, with no indication of blocking, to the skin above knee and hock joints, to include the head, excluding tail switch, before arrival. Must weigh between 60 lbs. & 115 lbs. inclusive. 4 lb. weigh back at time of judging **108 goats will make the sale. Terminal Show.**

Barrows: \$30.00 – May enter 1 barrow. Must weigh between 240-280 lbs. All barrows penned will be re-weighed. 10 lb. weigh-back. **346 barrows will make sell. Terminal Show.**

Steers: \$35.00 – May enter 1 per exhibitor. Must have 1/4" or less hair except on the tail switch upon arrival on the grounds. Not required to have both temporary central Incisors in place. 1000 lbs. - 1500 lbs. All steers selected for placing consideration will be re-weighed, steers weighing greater than or less than 5% of the weigh-in weight will be disqualified. All placing steers must sell in the Junior Market Steer Auction. **219 Steers will make the sale.**

Breeding Goats & Sheep: \$30.00 entry fee. Each owner may show as many as two animals in each single class. Must show ownership on or before Oct. 1st, 2016. **Angoras** (Nov. 1, 2016)

Breeding Heifers: \$35.00 entry fee. Each owner may enter 1 heifer. "Blow & Go" show. Must show ownership on or before Nov. 1st, 2016 and **MUST** be validated in the Texas validation system.

Breeding Swine: \$30.00 entry fee. May enter up to 3 head. Must show ownership on or before Dec. 1st, 2016. **All gilts must have been farrowed between July 1st and September 10, 2016.**

Gate Passes: 1 free gate pass per exhibitor. Extra passes \$20.00.

Car Passes: \$27.00 each: Week 1 (Feb. 8-18) & Week 2 (Feb. 18-26)

SAN ANTONIO LIVESTOCK SHOW WEIGHT BREAKS

STEER	2016	2015	2014	2013
ANGUS	1000-1152 1153-1269 1270-1500	1000-1167 1168-1295 1296-1500	1000-1160 1161-1269 1270-1500	1000-1155 1156-1287 1288-1500
BRAHMAN	1000-1179 1180-1279 1280-1500	1000-1184 1185-1286 1287-1500	1000-1160 1161-1269 1270-1500	1000-1195 1196-1290 1291-1500
CHAROLAIS	1000-1194 1195-1298 1299-1500	1000-1209 1210-1341 1342-1500	1000-1196 1197-1288 1289-1500	1000-1200 1201-1294 1295-1500
CHIANINA	1000-1114 1115-1181 1182-1250 1251-1324 1325-1399 1400-1500	1000-1122 1123-1200 1201-1260 1261-1331 1332-1403 1404-1500	1000-1120 1121-1185 1186-1268 1269-1339 1340-1390 1391-1500	1000-1123 1124-1189 1190-1239 1240-1300 1301-1371 1372-1500
HEREFORD	1000-1274 1275-1359 1360-1500	1000-1225 1226-1349 1350-1500	1000-1227 1228-1340 1341-1500	1000-1230 1231-1321 1322-1500
LIMOUSIN	1000-1250 1251-1321 1322-1500	1000-1220 1221-1331 1335-1500	1000-1227 1228-1320 1321-1500	1000-1221 1222-1300 1301-1500
MAINE ANJOU	1000-1218 1219-1310 1311-1500	1000-1220 1221-1311 1312-1500	1000-1230 1231-1316 1317-1500	1000-1234 1235-1319 1320-1500
RED ANGUS	1000-1210 1211-1500	1000-1218 1219-1500	1000-1220 1221-1500	1000-1220 1221-1500
SANTA GERTRUDIS	1000-1208 1209-1307 1308-1500	1000-1204 1205-1305 1306-1500	1000-1204 1205-1309 1310-1500	1000-1210 1211-1315 1316-1500
SHORTHORN	1000-1168 1169-1306 1307-1500	1000-1169 1170-1285 1286-1500	1000-1173 1174-1267 1268-1500	1000-1173 1174-1271 1272-1500
SIMBRAH	1000-1224 1225-1319 1320-1500	1000-1235 1236-1349 1350-1500	1000-1247 1248-1325 1326-1500	1000-1259 1260-1320 1321-1500
SIMMENTAL	1000-1244 1245-1369 1370-1500	1000-1245 1246-1305 1306-1500	1000-1253 1254-1310 1311-1500	1000-1268 1269-1330 1331-1500

	2016	2015	2014	2013
ABC	1000-1194 1195-1289 1290-1500	1000-1127 1128-1275 1276-1500	1000-1135 1136-1289 1290-1500	1000-1140 1141-1295 1296-1500
AOB	1000-1053 1054-1135 1136-1209 1210-1283 1284-1380 1381-1500	1000-1062 1063-1150 1151-1226 1227-1327 1328-1380 1381-1500	1000-1065 1066-1149 1150-1227 1228-1291 1292-1357 1358-1500	1000-1074 1075-1160 1161-1233 1234-1299 1300-1351 1352-1500
BRANGUS	1000-1237 1238-1349 1350-1500	1000-1206 1254-1335 1336-1500	1000-1210 1211-1304 1305-1500	1000-1195 1196-1290 1291-1500

SHEEP	2016	2015	2014	2013
FINE WOOL	102-117 118-124 125-131 133-140 141-169	100-119 120-127 128-131 132-141 142-175	105-116 117-122 123-129 130-135 136-155	100-114 115-124 125-131 132-138 139+
FINE WOOL X	101-125 126-132 133-140 141-143 144-148 150-158 160-175	100-127 128-133 134-138 139-142 143-148 149-158 159-175	100-121 122-128 129-133 134-139 140-144 145-149 150-175	100-124 125-131 132-136 137-140 141-146 147-155 156+
SOUTH DOWN	100-108 109-116 117-123 124-131 132-138	100-109 110-113 114-121 122-128 129-138	100-105 106-112 113-118 119-125 126-133	100-106 107-113 114-120 121-129 130+
MED WOOL	102-123 124-129 130-133 134-137 138-141 142-145 146-148 149-151 152-154 155-157 158-160 161-164 165-168 169-174 175+	100-123 124-129 130-133 134-137 138-140 141-144 145-147 148-150 151-153 154-156 157-158 159-161 162-165 166-172 173-175	100-118 119-125 126-130 131-133 134-137 138-140 141-143 144-146 147-149 150-152 153-155 156-159 160-162 163-167 168-175	100-122 123-128 129-132 133-135 136-139 140-143 144-146 147-148 149-151 152-154 155-157 158-161 162-166 167-173 174-210

GOATS (San Antonio)	2016	2015	2014	2013
	60-70	60-70	60-71	60-74
	71-77	71-75	72-76	75-80
	78-81	76-79	77-80	81-85
	82-84	80-83	81-83	86-89
	85-87	84-87	84-85	90-92
	88-90	88-90	86-88	93-95
	91-93	91-94	89-91	96-99
	94-96	95-97	92-95	100-104
	97-99	98-100	96-98	105-109
	100-103	101-104	99-102	110-115
	104-108	105-110	103-107	
	109-115	111-115	108-115	

SWINE	2016	2015	2014	2013
DUROC	240-244	240-245	240	240
	245-253	246-257	240-241	241-253
	254-261	258-266	242-253	254-258
	262-266	267-272	254-262	259-264
	267-272	273-276	263-268	265-268
	273-279	277-280	269-276	269-273
	280	277-280	277-280	274-278
	280	277-280	277-280	279-280
				280
HAMPSHIRE	240	240	240	240
	240	240	240	240
	240	241-246	240	240
	241-246	247-252	240	241-147
	247-252	253-256	241-246	248-253
	253-255	257-261	247-253	254-257
	256-260	262-265	254-257	258-262
	261-265	266-269	258-262	263-265
	266-271	270-274	263-268	266-271
	272-276	275-279	269-274	272-276
	277-280	280	275-279	277-280
	277-280	280	280	280

	2016		2015		2014		2103	
YORK-SHIRE	240-248 249-257 258-268 269-276 277-280 277-280	240-244 245-257 258-270 271-276 277-280 277-280	240-245 246-257 258-266 267-275 276-280 276-280	240-247 248-258 259-266 267-274 275-280 275-280				
LANDRACE	240-267 270-280	240-278 279-280	240-263 265-280	240-26.3 264-280				
BERKSHIRE	240-251 252-268 269-280	240-255 256-274 275-280	240-254 255-269 270-280	240-256 257-272 273-280				
CROSS	<u>Dark</u> 240-243 240-243 244-253 254-260 261-267 268-276 277-280 277-280	<u>Light</u> 240-241 240-241 240-241 242-245 246-248 249-254 255-258 259-262 263-265 266-268 269-271 272-275 276-279 280 280	<u>Dark</u> 240-243 240-243 244-253 254-261 262-267 267-276 277-280 277-280	<u>Light</u> 240-243 240-243 240-243 244-249 250-253 254-256 257-259 260-263 264-266 267-269 270-272 273-275 276-277 278-280 278-280	<u>Dark</u> 240-242 240-242 243-250 251-255 256-263 264-269 270-279 280	<u>Light</u> 240-243 240-243 240-243 240-243 244-247 248-251 252-256 257-259 260-263 264-266 267-271 272-274 275-277 278-280 278-280 278-280	<u>Dark</u> 240 240-244 245-252 253-258 259-267 268-275 276-280 280	<u>Light</u> 240 240 240 241-246 247-250 251-255 256-259 260-263 264-266 267-269 270-273 274-276 277-280 277-280 277-280
POLAND	240-263 264-280	240-272 273-280	240-257 258-280	240-261 262-280				
SPOTTED POLAND CHINA	240-245 246-258 259-272 273-280	240-249 250-265 266-278 280	240 241-254 255-269 270-280	240-245 246-257 258-272 273-280				
CHESTER	240-250 251-269 270-280	240-253 254-270 271-280	240-255 256-271 272-280	240-250 251-263 264-274 275-280				



Goats	Arrive	6 am—1 pm Saturday, February 4th
	Check In	by 3 pm Saturday, February 4th
	Show	8 am Sunday, February 5th
Lambs	Arrive	6 am—1 pm Saturday, February 4th
	Check In	by 4 pm Saturday, February 4th
	Show	8 am Sunday, February 5th (FW, FWX, Dorper) 8 am Monday, February 6th (SD & MW)
Steers	Arrive	8 am—4 pm Monday, February 6th
	Check In	by 5 pm Monday, February 6th
	Show	9 am Tuesday, February 7th
Barrows	Arrive	6 am—3 pm Tuesday, February 14th
	Check In	by 4 pm Tuesday, February 14th
	Show	8 am Wednesday, February 15th (Hampshire & Crossbred) 8 am Thursday, February 16th (Duroc, LOPB, DOPB, Yorkshire)
Heifers:	Arrive	8 am Thursday, February 9th (In place times vary by breed)
	Check In	10 am Friday, February 10th & Saturday, February 11th
	Show	1 pm Friday, February 10th 8 am Saturday, February 11th 8 am Sunday, February 12th
Angoras	Arrive	8 am—5 pm Friday, February 9th
	Weigh In	Futurity 5 pm Thursday, February 9th
	Show	Futurity 8 am Friday, February 10th Junior 1 pm Saturday, February 10th
Texas Stars Does	Arrive	12 pm—5 pm Thursday, February 2nd
	Weigh In	3 pm—5 pm Thursday, February 2nd
	Show	8 am Friday, February 3rd
Youth Boer Goat	Arrive	8 am Friday, February 17th
	Show	1 pm Saturday, February 18th
CTBR Gilts	Arrive	10 am - 8 pm Fri, Feb 10th; 7 am - 12 pm Sat, Feb 11th
	Check In	by 1 pm Saturday, February 11th
	Show	Pedigreed—3 pm Saturday, February 11th Non-Pedigreed—8 am Sunday, February 12th
Breeding Gilts	Arrive	10 am—8 pm Fri, Feb 10th; 7 am—12 pm Sat, Feb 11th
	Check In	by 12 pm Saturday, February 11th
	Show	8 am Sunday, February 12th
Breeding Sheep	Arrive	10 am Wednesday, February 1st—3 pm Thursday, February 2nd
	Check In	3 pm Thursday, February 2nd
	Show	8 am Friday, February 3rd
Ewe Lamb Futurity	Arrive	10 am Wednesday, February 1st
	Weigh In	1 pm Friday, February 2nd
	Show	2 pm Friday, February 2nd

Auction: Market Animals 2:30 p.m., Saturday, February 18th
Texas Star Does 6:30pm Saturday, February 4th
CTBR Gilts 7 pm Tuesday, February 14th

Contests: Wool & Mohair Fleece Contest - 9 am, Friday, February 17th
Livestock Judging Contest- 8:30 a.m., Saturday, February 18th
Wool & Mohair Judging Contest - 8:30 a.m., Saturday, February 20th

Lambs: Entry fee \$28.00/head. May enter 5 total with no more the 2 per breed – wethers only.
Tooth Rule in place—no more than 1st set of permanent teeth. 100 lbs. min weight, 90 lbs. for southdowns. 170 lbs. max weight. 5lb weigh-back. Lightweight classes will have preset weight breaks. Lambs may not be shorn after arrival on the grounds. **Places 1-4 (all classes except Dorpers) will sell in premium sale. Place 1-2 (Dorpers) will sell in premium sale. Places 5—10 receive a set amount. TLBA Only Show. TERMINAL SHOW**

Goats: Entry fee \$28.00/head. Limit 2/exhibitor, Must weight between 60-115 lbs, wethers must be uniformly shorn 3/8' or less above knee and hock joint. No sharp points allowed on horns. **No Tooth Rule!** 4 lb. weigh-back. 10 weight classes. **Places 1-4 will sell in premium sale. Places 5-8 will receive a set amount. TERMINAL SHOW**

Barrows: Entry fee \$28.00/head. **Texas Bred Only Show.** Limit 2/exhibitor – Must weight between 240-280 lbs. 10 lb. weigh-back. **Places 1-3 will sell in premium sale. Places 4-10 receive a set amount. TERMINAL SHOW**

Steers: Entry fee \$38.00/head. Limit 2/exhibitor. Minimum 1000 lbs. 5% weigh-back. Hair must not exceed ¼ ". **Places 1-2 will sell in premium sale. Places 3-6 will receive a set amount.**

Heifers: Entry fee \$35.00/head. No limit on entries. Talk to County Agent about Ownership dates for each breed. Ask for details on Heifer Futurity Show.

Breeding Sheep: Entry fee \$25.00/head. Limit 8/breed/exhibitor. Each Exhibitor can enter 2 animals per single class & 1 group in each group class. Ask County Agent for detailed tooth rules

Jr. Ewe Lamb Futurity: Entry Fee \$30.00/head. Limit 1 pair/exhibitor. Health papers are required. Ask county agent for details.

Jr. Breeding Gilt Show: Entry Fee \$25.00/head, no limit on entries. **Texas Bred Gilts ONLY! ALL GILTS MUST BE TX VALIDATED.** Health papers are required at check in & must be dated on or after January 16, 2017.

CTBR Star Gilt Show: Entry Fee \$28.00/head, no limit on entries. **Texas Bred Gilts ONLY! ALL GILTS MUST BE TX VALIDATED** Health Papers & Lepto vaccination required. Papers must be dated on or after January 16, 2017. Non-pedigreed gilts 230 lb. minimum. 10 lb. weight-back.

Angoras: Entry Fee \$25.00 per head, Limit 12 head per exhibitor.

Jr. Star Wether Doe Show: Entry Fee \$28.00, limit 3 head/exhibitor. 50 lb. minimum weight. Health papers & Scrapie tags required. Papers must be dated on or after January 11, 2017. **Must be state validated.**

Youth Boer Goat Show: Entry Fee \$25.00, limit 2 entries/class. Health Papers & Scrapie tags required. **Must be state validated.**

Passes: Exhibitors issued 1 gate pass. Additional gate passes \$10.00. Vehicle passes are \$20.00.

SAN ANGELO WEIGHT BREAKS

SWINE	2016	2015	2014
DUROC	240-251 252-265 266-279 280	240-253 254-268 269-280 269-280	240-257 258-271 272-280 272-280
CROSS	240 240 241-248 249-256 257-261 262-267 268-273 274-280 274-280	240 240 241-249 250-256 257-263 264-270 271-275 276-280 276-280	240 240-242 243-251 252-258 259-263 264-268 269-274 275-280 275-280
WOPB	240-248 249-271 272-280	240-255 259-275 276-280	240-253 255-275 276-280
YORKSHIRE	240-248 249-270 271-280	240-250 253-277 278-280	240-250 251-277 280
HAMPSHIRE	240-250 240-250 251-260 261-274 275-280	240 242-252 253-263 264-275 276-280	240 241-254 255-265 266-279 280
BOPB	240 241-256 257-270 271-280	240-243 244-258 259-273 274-280	240-249 250-261 262-278 280
NON-PEDIGREED GILTS	230-233 230-233 230-233 230-233 234-239 240-247 248-250 251-255 256-259 260-264 265-269 270-275 276-281 282-289 290-296 297-305 306-319 320-392	230-235 230-235 236-241 242-252 253-259 260-266 268-275 276-282 283-290 291-304 305-321 322-375	230 231-242 243-252 253-259 260-266 267-274 275-282 283-291 292-298 299-315 316-330 331-391

STEER	2016	2015	2014
ENGLISH	1006-1195 1200-1302 1310-1530	1005-1199 1200-1321 1324-1459	1055-1218 1230-1325 1340-1588
AMERICAN	1030-1157 1160-1275 1283-1427	1070-1179 1187-1299 1303-1485	1081-1180 1261-1342 1357-1454
EUROPEAN	1000-1075 1081-1149 1153-1210 1217-1261 1267-1319 1323-1388 1399-1599	1001-1063 1075-1112 1114-1169 1170-1247 1248-1320 1324-1390 1392-1516	1000-1119 1123-1171 1173-1249 1250-1289 1290-1339 1340-1375 1376-1497

SHEEP	2016	2015	2014
FINE WOOL	101-110 115-125 126-135 136-162	102-110 115-127 128-136 137-170	100-110 115-125 126-136 137-163
FINE WOOL X	100-120 121-137 138-147 148-170	100-120 125-139 140-148 149-170	100-120 122-136 137-146 147-170
SOUTHDOWN	90-110 112-127 128-157	94-110 113-128 129-170	101-110 116-130 131-157
MEDIUM WOOL	100-125 1268-143 144-156 157-170	100-125 132-144 145-158 159-170	100-125 130-144 145-156 157-170

GOATS	2016	2015	2014
	60-67 68-74 75-79 80-83 84-86 87-91 92-96 97-101 102-108 109-115	60-70 71-78 79-82 83-86 87-89 90-93 94-97 98-101 102-108 109-115	60-69 70-76 77-81 82-85 86-89 90-93 94-97 98-101 102-106 107-115



Lambs	Arrival	4 am—11 am Wednesday, March 15th
	Check In	by 1:30 pm Wednesday, March 15th
	Show	8:30 am Thursday, March 16th (FW, FWX, Southdown, Dorper) 8 am Friday, March 17th (Medium Wool)
Goats	Arrival	4 am—11 am Wednesday, March 15th
	Check In	by 1:30 pm Wednesday, March 15th
	Show	8:30 am Thursday, March 16th (Divisions I & II) 8 am Friday, March 17th (Divisions III & IV)
Barrows	Wave 1:	Duroc, Hamp, Poland China, Berk, Spotted, Dark Crossbred
	Wave 2:	York, Chester & OPB, Other Crossbred
	Arrival	Wave 1: 4 am—11 am Saturday, March 18th Wave 2: 4 am—11 am Tuesday, March 21st
	Check In	Wave 1—by 1:30pm Saturday, March 18th Wave 2—by 1:30pm Tuesday, March 21st
	Show	8 am Sunday, March 19th (Duroc, Hampshire, Poland China) 8 am Monday, March 20th (Berkshire, Spotted, and Dark Cross) 8 am Wed., March 22nd (York, Chester, OPB & Light Wt. Cross) 8 am Thursday, March 23rd (Other Crossbred)
Steers	Arrival	4 am - 12 noon Monday, March 20th
	Check In	7 am Tuesday, March 21st
	Show	8 am Wednesday March 22nd
		(Maine-Anjou, Simmental, Charolais, Angus, Red Angus, Hereford, Polled Hereford, Shorthorn) 8 am Thursday, March 23rd
		(Black Cross, Brangus, Santa Gertrudis, Brahman, Simbrah, ABC) 8 am Friday, March 24th
		(Other Cross, Limousin, Red Cross)
Heifers	Arrival	4 am—12 noon Thursday, March 16th
	Check In	12 noon—5 pm Thursday, March 16th
	Show	10 am Friday, March 17th
E Arena	—Charolais, ORB, Red Angus	W Arena —Brangus, Grey Brahman, Red Brahman 8 am Saturday, March 18
E Arena	—Maine-Anjou, Simmental P Hereford, Angus, ARB	W Arena —Beefmaster, Hereford, Chianina, Limousin 8 am Sunday, March 19th
E Arena	—Simbrah, Shorthorn	W Arena —Santa Gerturdis, Red Brangus
	Scramble Heifer Show	8 am Friday, March 17th
Breeding Gilts	Arrive	7 am—3 pm Thursday, March 9th
	Check In	5 pm Thursday, March 9th
	Show	8 am Friday, March 10th

Release:

Heifers—Must be out by 8 p.m., Sunday, March 19th

Steers—all non-placing steers must be out by noon the day of the show

Breeding Sheep—Must be out by 8 pm Monday, March 13th

Breeding Gilts—Must be out by 6 pm Friday, March 10th

Auction:

Lambs & Goats – 6:30 p.m. Friday, March 17th, mandatory meeting for top 3 exhibitors in each class. **12:00 noon, Saturday, March 18th is the Auction!**

Barrows – 6:30 p.m., Thursday, March 23rd, mandatory meeting for 1st place & higher exhibitors in each class. **12:00 noon, Friday, March 24th is the Auction!**

Steers – 5:30 p.m., Friday, March 24th, mandatory meeting for top 4 exhibitors in each class. **12:00 noon, Saturday, March 25th is the Auction!**

Contests: Range & Pasture Plant ID —9:00 AM, Saturday, March 11th

Livestock Judging — 12:30 p.m., Monday, March 20th

Wool Judging - 1:00 p.m., Monday, March 20th

Horse Judging - 9:30 a.m., Wednesday, March 8th

Lambs: Entry fee \$27.00. Exhibitor may enter 1 wether lamb. Must be slick shorn from knee and hock up at time of arriving. 100 lbs. minimum. Southdown 90 lb. minimum. 5lb weigh-back. Will sell 60 southdowns, 48 fine wools, 51 crosses, 60 Southdown, 153 medium wools & 12 Dorpers. A total of 324 lambs will sale. **Terminal Show.**

Goats: Entry fee \$27.00. Exhibitor may enter 1 wether goat. 65 lbs. minimum, 115 lbs. maximum. 4 lb. weigh-back. Goats must be shorn slick and of uniform length, horns must be tipped (not less than the diameter of a dime at the end). The top 14 goats from each class will sale. A total of 168 goats will sell. **Terminal Show.**

Barrows: Entry fee is \$27.00. Exhibitors may enter 1 barrow. Minimum Weight is 240 lbs. and 280 lbs maximum. 10 pound weigh-back. No outside shavings allowed. All barrows selected by the judge will be weighed before re-entering the arena. Will sell 52 Spotted, 77 Durocs, 16 Poland China, 30 Berkshires, 117 Hampshires, 96 Dark Crossbred, 36 Chester White & OPB, 60 Yorkshires, and 180 Other crossbreds. Total of 664 Hogs. **Terminal Show. To stall together, barrows must arrive together.**

Steers: Entry fee is \$32.00 / Exhibitors may enter 1 steer. Minimum weight 1000 lbs. All Placing steers will be weighed before leaving the ring. 95-105% weigh back. **Hair must not exceed ¼” except for the tail switch.** Steers must be dehorned.

Breeding Animals: Ask County Agent for specific rules.

HOUSTON LIVESTOCK SHOW WEIGHT BREAKS

STEER	2016	2015	2014	2013
ANGUS	1015-1199 1200-1300 1300-1575	1050-1188 1189-1237 1238-1440	1000-1237 1238-1337 1338-1485	1000-1147 1148-1240 1241-1525
BRAHMAN	1086-1163 1164-1269 1270-1598	1025-1171 1172-1267 1268-1475	1000-1215 1216-1279 1280-1460	1000-1188 1189-1291 1292-1500
BRANGUS	1001-1200 1201-1310 1311-1515	1085-1208 1209-1335 1336-1445	1000-1212 1213-1297 1298-1450	1114-1205 1255-1311 1314-1520
RED ANGUS	1014-1174 1175-1420	1027-1181 1182-1273 1274-1625	1000-1185 1186-1275 1276-1520	1000-1189 1190-1280 1281-1495
CHAROLAIS	1045-1198 1199-1305 1306-1543	1010-1199 1200-1295 1296-1499	1000-1204 1205-1297 1298-1501	1000-1207 1208-1298 1308-1568
CHIANINA	1001-1119 1120-1225 1226-1280 1281-1381 1382-1545	1010-1120 1121-1240 1241-1280 1281-1375 1376-1568	1000-1119 1120-1190 1191-1288 1289-1359 1360-1581	1000-1119 1120-1192 1193-1250 1251-1296 1305-1385 1386-1600
HEREFORD	1000-1233 1234-1315 1316-1537	1035-1244 1245-1318 1319-1535	1000-1201 1202-1339 1340-1537	1000-1211 1212-1297 1312-1493
LIMOUSIN	1015-1225 1226-1319 1320-1537	1050-1224 1225-1333 1334-1450	1000-1224 1225-1285 1286-1497	1000-1227 1228-1289 1290-1450
MAINE	1000-1190 1191-1299 1300-1515	1020-1199 1200-1299 1300-1524	1000-1208 1209-1302 1303-1500	1000-1209 1230-1277 1278-1460
P HEREFORD	1120-1233 1234-1309 1310-1599	1072-1231 1232-1312 1313-1499	1000-1239 1240-1330 1331-1463	1000-1239 1240-1299 1300-1495
SHORTHORN	1020-1220 1221-1265 1266-1500	1000-1168 1169-1260 1261-1415	1000-1177 1178-1267 1268-1450	1000-1196 1197-1286 1287-1480

	2016	2015	2014	2013
SIMBRAH	1000-1217 1218-1319 1320-1575	1065-1219 1220-1330 1331-1495	1000-1234 1235-1349 1350-1490	1000-1253 1254-1335 1336-1646
SIMMENTAL	1119-1236 1237-1339 1340-1550	1083-1240 1241-1340 1341-1448	1120-1270 1271-1350 1351-1500	1130-1230 1231-1333 1335-1530
AOB	1000-1065 1066-1119 1120-1182 1183-1259 1260-1350 1351-1510	1000-1095 1096-1144 1145-1205 1206-1269 1270-1340 1341-1600	1000-1105 1106-1160 1161-1227 1228-1280 1281-1345 1346-1557	1000-1040 1041-1125 1126-1190 1191-1261 1262-1333 1334-1555
ABC	1000-1117 1118-1219 1220-1311 1312-1525	1001-1107 1108-1199 1200-1265 1266-1319	1000-1120 1121-1225 1226-1300 1301-1585	1000-1137 1138-1250 1251-1325 1326-1495
SANTA GERT	1100-1215 1216-1299 1300-1476	1065-1219 1220-1303 1304-1498	1139-1238 1239-1344 1345-1565	1000-1255 1256-1319 1320-1460

GOATS	2016	2015	2014	2013
	65-71	65-71	65-72	65-74
	72-79	72-77	73-77	75-79
	80-83	78-81	78-81	80-83
	84-86	82-85	82-85	84-86
	87-89	86-88	86-88	87-89
	90-92	89-91	89-91	90-92
	93-95	92-94	92-94	93-95
	96-98	95-97	95-97	96-98
	99-100	98-100	98-100	99-101
	101-104	101-104	101-104	102-105
	105-109	105-109	105-110	106-110
	110-115	110-115	111-115	111-115

LAMBS	2016	2015	2014	2013
FINE WOOL	101-130 132-139 140-164	113-129 130-138 139-167	100-124 125-134 135-163	100-127 128-136 137-162
FINE WOOL +	115-140 141-157 158-187	122-141 142-152 153-184	100-135 136-146 147-183	117-136 137-147 148-173
SOUTH- DOWN	99-122 123-135 136-168	95-123 124-136 137-167	100-123 124-136 137-167	90-115 117-129 130-179
MEDIUM WOOL	110-130 131-138 139-146 147-151 152-156 157-161 162-166 167-173 174-225	109-130 131-138 139-144 145-148 149-153 154-158 1569-165 166-174 175-212	105-132 133-138 139-144 145-149 150-154 155-159 160-165 166-174 175-202	106-131 132-139 140-144 145-149 150-153 154-158 159-163 164-170 171-200

SWINE	2016	2015	2014	2013
BERKSHIRE	240-254 255-269 270-280	240-248 249-269 270-280	240-249 250-271 272-280	240-252 253-274 275-280
CHESTER & WOPB	240-248 249-262 263-275 276-280	240-250 251-265 266-279 280	240-257 258-277 278-280 278-280	240-249 250-262 263-275 275-280
DUROC	240 241-253 254-260 261-268 269-275 276-280 276-280	240 241-255 256-263 264-270 271-276 277-280 277-280	240 241-257 258-264 265-272 273-278 279-280 279-280	240-240 242-253 254-260 261-267 268-276 277-280 277-280
SPOTTED POLAND CHINA	240-245 246-258 259-270 271-280	240-250 251-262 263-275 276-280	240 241-256 257-272 273-280	240-245 240-245 246-262 263-280
POLAND CHINA	240-255 256-280	240-257 258-280	240-260 261-280	240-259 260-280

	2016	2015	2014	2013
HAMPSHIRE	240-241 240-241 240-241 242-245 246-250 251-254 255-258 259-263 264-266 267-272 273-276 277-280 277-280	240-242 240-242 240-242 243-246 247-248 250-253 254-257 258-261 262-264 265-266 267-274 275-279 280	240-243 240-243 240-243 240-243 244-248 249-254 255-259 260-263 264-266 267-270 271-277 278-280 278-280	240-243 240-243 240-243 240-243 240-243 244-248 249-253 254-257 258-262 263-267 268-271 272-279 280-280
CROSS	240-241 240-241 240-241 240-241 242-245 246-248 249-252 253-255 256-257 258-260 261-264 265-267 268-271 272-274 275-277 278-280 278-280 278-280	240 240 240 241-243 244-246 247-251 252-254 255-257 258-260 261-263 264-266 267-269 270-272 273-275 276-279 280 280 280	240-243 240-243 240-243 240-243 240-243 244-247 248-252 253-256 257-258 259-261 262-265 266-269 270-273 274-277 278-280 278-280 278-280 278-280	240-242 240-242 240-242 240-242 240-242 243-247 248-250 251-253 254-255 256-259 260-262 263-265 266-268 269-272 273-275 276-279 280 280
DARK CROSS	240 240 241-249 250-255 256-263 264-269 270-277 278-280	240 240 241-250 251-256 257-264 265-269 270-277 278-280	240 240 241-251 252-258 259-265 266-271 272-279 280	240-240 240-240 241-247 248-253
YORKSHIRE	240 241-251 252-258 259-267 268-279 280	240-243 244-258 259-267 268-276 277-280 277-280	240-244 245-255 256-263 264-270 271-279 280	240-246 247-253 254-261 262-272 274-279 280-280



Goats:	Arrival	9 am—2 pm Saturday, March 18th
	Check In	3 pm Saturday, March 18th
	Show	9 am Sunday, March 19th
	Auction	10 am Friday, March 24th
Lambs:	Arrival	9 am—2 pm Saturday, March 18th
	Check In	3 pm Saturday, March 18th
	Show	9 am Sunday, March 19th
	Auction	1 pm Friday, March 24th
Barrows:	Arrival	7 am—12 pm Monday, March 20th
	Check In	1 pm Monday, March 20th
	Show	9 am Tuesday, March 21st (Duroc, OPB-Dark, OPB-White, Hampshire)
	Auction	9 am Wednesday, March 22nd (York, Crossbred) 2:30 pm Friday, March 24th
Heifers:	Arrival	7 am—12 pm Saturday, March 11th
	Paper Check	1 pm Saturday, March 11th
	Show	9 am Sunday, March 12th (American) 9 am Monday, March 13th (British/Continental)
	Release	following show or by 8 am Tuesday, March 14th
Steers:	Arrival	9 am—2 pm Tuesday, March 14th
	Check-In	3 pm Tuesday, March 14th
	Show	9 am Wednesday, March 15th (British, Shorthorn, Brahman, ABC, and AOB Black)
	Release	9 am Thursday, March 16th (AOB Other Color) following conclusion of shows
	Auction	12 pm Friday, March 24th

Lambs: \$30 per head. May enter 1 wether lamb. **No Tooth Rule!** 5 lbs. weigh-back for all 1st & 2nd placing animals as well as random animals. Minimum weight of 100 lbs. (except southdowns, 90 lbs.) No Maximum. **Will have 18 set classes (3 FW, 4 FWX, 3 SD, 10 MW). Will sell 12 SD, 12 FW, 12 FWX, 50 MW. Total of 86 lambs!!!**

Goats: \$30 per head. Exhibitor limited to 1 wether goat. **No Tooth Rule!** Must be shorn slick to the skin above knee and hock joints, excluding the tail switch. Horns must be blunt tipped. Must weigh between 60—120 lbs. 4lb. Weigh back for all 1st, 2nd, & random placing goats. Animals will be divided into 15 classes. **Top 6 in each class will sale. Total of 90 goats will sell.**

Barrows: \$30 per head. Exhibitor limited to one barrow. Barrows must weigh between 240 to 280 lbs. 10 lbs weigh back on all placing barrows. Classes will be determined after all weights have been turned in and classes may be grouped by 3lb spreads. **Total 103 barrows will sell!!!**

Steers: \$35 per head. Exhibitor limited to 1 steer entry. **No Tooth Rule!** Steers hair may not exceed ¼” on any part of the body excluding the tail switch. Minimum weight 1000 lbs and no maximum. Randomly chosen animals will be weighed-back at judging. Steers weighing more than 5% more or less than the weigh-in weight will be disqualified. **All placing steers MUST sell in the Junior Market Steer Auction. Approx. 68 steers will sell!!!**

Heifers: \$35 per head, no limit to entries. Health papers will be required for all animals. The following breed divisions will be offered: Angus, Beefmaster, Brahman, Brangus, Charolais, Hereford, Limousin, Maine-Anjou, Red Angus, Red Brangus, Santa Gertrudis, Shorthorn, Simbrah, Simmental, ARB & ORB. **Premiums are: Supreme - \$2000.00 Reserve Supreme - \$1500.00 Breed Champion - \$400.00, Reserve Breed Champion - \$300.00 First Place—\$25.00, Second Place—\$15.00**

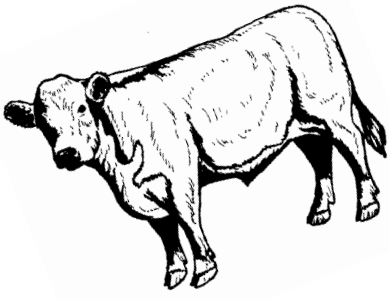
Gate Passes: 1 free gate pass per exhibitor, additional passes \$25.00

Season Car Passes: \$30.00

STAR OF TEXAS WEIGHT BREAKS

STEER	2016	2015	2014	2013
ENGLISH	1127-1313 1326-1565	1079-1290 1299-1457	1100-1264 1269-1550	1030-1289 1294-1645
SHORTHORN	1060-1259 1267-1495	1100-1269 1270-1530	1155-1275 1300-1450	1118-1510
ABC/ AMERICAN	1035-1165 1179-1238 1239-1279 1280-1333 1339-1389 1391-1549	1003-1114 1139-1209 1210-1244 1257-1279 1288-1357 1375-1530	1079-1115 1117-1230 1241-1282 1290-1357 1362-1395 1396-1485	1005-1125 1195-1263 1264-1317 1318-1344 1345-1351 1377-1525
BRAHMAN	1185-1317 1339-1433	1142-1549	1140-1389	1239-1449
AOB Black	1000-1069 1076-1140 1146-1174 1178-1225 1227-1281 1286-1339 1341-1375 1381-1559	1000-1119 1120-1173 1177-1213 1231-1259 1263-1283 1300-1314 1323-1345 1347-1399 1409-1530	1049-1127 1130-1191 1193-1216 1217-1240 1244-1283 1285-1315 1323-1351 1359-1399 1407-1543	1015-1140 1155-1224 1225-1243 1260-1298 1299-1335 1337-1374 1385-1499
AOB Other Color	1000-1072 1077-1135 1136-1169 1170-1199 1200-1230 1236-1259 1267-1278 1279-1287 1289-1317 1319-1347 1348-1379 1380-1418 1420-1492	1000-1080 1097-1138 1139-1171 1177-1199 1200-1227 1229-1240 1242-1289 1290-1322 1323-1349 1350-1387 1389-1411 1415-1600	1015-1085 1092-1150 1154-1185 1188-1204 1218-1243 1246-1270 1280-1308 1310-1330 1334-1356 1359-1372 1373-1411	1005-1092 1099-1140 1142-1159 1172-1204 1205-1229 1233-1250 1257-1270 1271-1292 1295-1320 1325-1345 1349-1375 1378-1420 1425-1540
GOAT	2016	2015	2014	2013
	60-70	60-70	61-72	60-72
	71-76	71-76	73-77	73-76
	77-80	77-81	78-81	77-81
	81-84	82-85	82-84	82-84
	85-87	86-88	85-87	85-87
	88-90	89-91	88-90	88-90
	91-92	92-93	91-92	91-93
	93-94	94-95	93-94	94-96
	95-96	96-97	95-96	97-99
	97-98	98-99	97-99	100-102
	99-101	100-101	100-102	103-105
	102-103	102-104	103-105	106-107
	104-106	105-107	106-110	108-111
	107-111	108-112	111-113	112-115
	112-120	113-120	114-120	116-120

LAMBS	2016	2015	2014	2013
FINE WOOL	115-127 128-137 138-165	108-129 130-139 140-169	102-125 126-136 139-159	110-128 129-137 138-175
FINE WOOL X	120-139 140-148 149-157 158-186	115-141 142-148 150-160 161-185	115-135 136-143 144-150 151-174	124-137 138-144 145-153 154-190
SOUTHDOWN	105-120 124-132 134-164	102-120 121-132 133-159	100-119 120-132 133-156	105-120 121-132 133-149
MEDIUM WOOL	104-135 136-143 144-150 151-156 157-159 160-165 166-173 174-197	104-135 137-144 145-149 150-154 155-159 160-166 167-175 176-200	105-134 135-141 142-146 147-150 151-155 156-160 161-167 168-200	115-136 137-142 143-147 148-151 152-156 157-161 162-170 171-202
SWINE	2016	2015	2014	2013
DUROC	240-250 251-269 270-280	240-254 255-264 269-279 280	240-243 244-258 259-275 276-280	240-247 248-264 265-279 280
HAMPSHIRE	240 240 241-250 251-259 260-265 266-273 275-280	240-243 240-243 240-243 244-254 255-264 265-272 274-277 280	240 240 241-245 246-250 251-258 260-267 268-276 277-280	240 240 240-243 244-255 256-262 263-272 273-279 280
YORKSHIRE	240-248 249-262 264-273 278-280	240-253 254-273 275-280	240-249 250-267 268-280	240-259 260-271 272-280
DOPB	240 243-252 256-266 270-280	240-255 256-267 268-280	240-249 250-274 275-280	240-249 250-260 261-280
WOPB	240-269 270-280	240-269 270-280	240-252 256-280	240-259 260-280
CROSS	240 240 240 240 241-244 245-248 249-253 254-257 258 262-265 266-269 270-273 274-276 278-280 278-280	240-242 240-242 240-242 243-249 250-256 257-262 263-266 267-271 272-276 277-280 280	240-243 240-243 240-243 245-249 250-256 257-259 260-264 265-270 271-276 277-280 277-280	240-243 240-243 240-243 244-251 252-255 256-262 263-268 269-274 275-279 280



**Good Luck
at the
Majors!**

