



# KIP 7970

## SPECIFICATIONS



Single Footprint KIP 7970 Print System

### System Configurations

4 Roll Print System	B&W wide format printer
Stacking Systems (standard)	Integrated top stacking - up to 50 sheet capacity
Stacking Systems (optional)	High capacity print tray, KIP 1200 stacker
Multifunction Scanning Systems (optional)	KIP 720 CIS scanner
Production Scanning Systems (optional)	KIP 2300 CCD scanner
Folding Systems (optional)	KIPFold 1000, KIPFold 2000

### General

Print Technology	Electrophotography (LED) with organic photoconductor (OPC) and closed toner system
Speed	13 D / 7 A0 size pages per minute, FPOT (First Print Output Time) 12 seconds from deck 1
Warm Up Time	Instant from standby, <6 minutes from start up
Configurations	Printer or multifunction system (print/copy/scan) 4 rolls
Electrical Requirements	220-240 V, 50/60 Hz, 16 A
Power Consumption	Sleep: <14 W Printing: 2.0 kW
Dimensions	67" (w) x 29" (d) x 59" (h) / 1702 mm (w) x 725 mm (d) x 1510 mm (h)
Weight	860 lbs. / 390 kg

### Printer

Print Resolution	600 x 2400 dpi
Paper Capacity	6000 sq. ft. / 558 sq. m, 4 rolls
Output Sizes Width	11" - 36" / 297 mm - 914 mm
Output Sizes Length	Length: 20' / 6 m (standard), 79' / 24 m (optional)
Paper Weight	Bond-plain 18-24 lb. / 64-90 gsm, vellum-translucent-tracing 18-20 lb./ 80 gsm, film 3.5-4 mil / 75 gsm
Media Type	Bond-plain, vellum-translucent-tracing, film (compatible with recycled & colored bond)

### Controller

Controller Type	KS8 Controller with Windows 7 Embedded
Memory	2 GB DDR3 standard - upgradable to 4 GB
Compatible File Formats	PDF, DWF, HPGL 1/2, HP-RTL, Calcomp 906/907, CALS Group 4, TIFF Group 4, PCX, CIT/TG4, VCGL, Uncompressed, Grayscale TIFF, TIFF Packbits, IOCA, EDMICS, TLC, PNG, JPEG



Single Footprint KIP 7970 Multifunction System

Optional KIP 720 Scanner

Scanner Type	C.I.S. with KIP RTT Technology
Scan Resolution	600 x 600 dpi optical resolution
Scan Speed	Up to 38.5 ft. per minute / 195 mm per second (B&W) Up to 13 ft. per minute / 65 mm per second (Color)
Scan Format	TIFF, Multipage TIFF, PDF, PDF-A, Multipage PDF, DWF, Multipage DWF, JPEG, CALS
Scan Destination	Local USB (removable media), unlimited system mailboxes (local), unlimited FTP, unlimited SMB, unlimited cloud connect to OneDrive, Google Drive or Dropbox, Box.com, Microsoft SharePoint & Microsoft Office 365 Online™
Original Size Width	8.5" - 36" / 210 mm - 914 mm
Original Thickness	Up to 1.6 mm thick
Interface	USB 2.0
Dimensions	45" (w) x 14" (d) x 6.3" (h) / 1140 mm (w) x 360 mm (d) x 160 mm (h)
Weight	53 lbs. / 25 kg
Electrical	100 - 240 V AC 50/60 Hz
Power Consumption	<50 W



Single Footprint KIP 7970 Production System

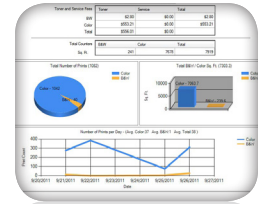
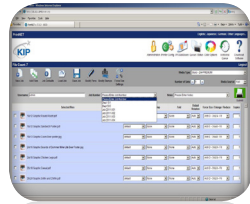


Dual Footprint KIP 7970 Production System



Optional KIP 2300 Scanner

Scanner Type	C.C.D. with KIP Tru•Speed Technology and KIP RTT Technology
Scan Resolution	600 x 600 dpi optical resolution
Scan Speed	Up to 60 ft. / 18 m per minute (B&W), up to 30 ft. / 9 m per minute (Color)
Scan Formats	TIFF, Multipage TIFF, PDF, PDF-A, Multipage PDF, DWF, Multipage DWF, JPEG, CALS
Scan Destination	Local USB (removable media), unlimited system mailboxes (local), unlimited FTP, unlimited SMB, unlimited cloud connect to OneDrive, Google Drive or Dropbox, Box.com, Microsoft SharePoint & Microsoft Office 365 Online™
Original Size Width/Length	8.5" - 42" (36" scan area) / 210 mm - 1066 mm (914 mm scan area)
Original Thickness	Up to 0.6" / 16 mm automatic thickness detection
Original Face Up/Face Down	Both - dual original feed tables
Interface	USB 2.0, KIP Tru•Speed Technology (2.3 GB per second data transfer)
Dimensions	54" (w) x 21" (d) x 13" (h) / 1360 mm (w) x 540 mm (d) x 320 mm (h)
Weight	160 lbs. / 73 kg
Electrical	100 - 240 V AC 50/60 Hz
Power Consumption	<120 W



## KIP Print Management Software

KIP Touchscreen	Integrated Cloud Connections	Full integration with OneDrive, Google Drive or Dropbox, Box.com, Microsoft SharePoint & Microsoft Office 365 Online™.
	Concurrent Print & Scan to File	Scan images to file while printing, select number of copies, select output media.
	File to Print	Fully cloud connected. Scan mailboxes, print from removable media, print from network locations, view images prior to printing, apply folding preferences, save/recall print jobs.
	Copying & Scanning	Fully cloud connected. Collated sets copying, recall, edit & reprint previous jobs, set copy & concurrent print, apply digital stamps, scan directly to multi-page PDF, DWF or TIFF, apply folding preferences to copies, scan to USB removable media drives.
	System Management	Print queue control, keycode management, inkjet configuration, illustrated operator guides, system guides, service mode access, system preset access.
KIP Printing Applications	KIP Print	KIP Print network printing software is an easy to use application designed to provide operators with a fast and accurate means of producing high quality print sets. An intuitive ribbon style interface with an emphasis on job building; featuring column browsing, color thumbnail previews and total preflight control.
	KIP Cloud Printing	The ability to produce wide format prints using nothing more than an email with attachments and a few key words helps keep mobile clients on the go and productive.
	KIP PrintNet Web Printing	Web-based printing utility which facilitates management of the print queue, configuration of files for printing from Windows, UNIX and Mac based internet browser applications.
	KIP Windows/AutoCAD Drivers	Windows driver supports 32 or 64 bit printing, set collation, job accounting, media selection & folding features. AutoCAD driver enables printing directly from AutoCAD applications with advanced vector/raster print data control.
	KIP Touchscreen Printing	KIP Touchscreen eliminates the need for additional PC hardware by printing documents from network drives, USB, FTP and cloud services.
KIP Cost Review Application	Cost Review Application	KIP Cost Review Application reports can be delivered via email or printed on demand to provide information related to toner coverage, media use and recent job details.
	KIP Track Application	Accounts for copy/print and scans using password protected data entries. Email reports weekly, monthly, or on demand. When activated, the KIP Track system requires operators to log in before operating. When activated, the KIP Track system requires operators to log in before operating.
KIP Color Plus	Color Scanning	Scan directly to PDF, JPG and TIFF, automatic quality presets, scan directly to USB and removable media, scan dpi from 200-600, scan to FTP, hard drive, user mailbox, email, scan preview, auto size detection, auto image color, original and copy presets, unlimited scan presets, lead and trail edge adjustments.
	Color Copying (optional)	Copy directly to wide range of inkjet printers, multiple copy count, reduction enlargement, auto rotate, mirror, invert, zoom, area of interest, scale to fit, auto image color, original and copy presets, unlimited copy presets, lead and trail edge adjustments, closed loop calibration, copy preview.
	Color Printing (optional)	Print single or multiple (sets) images directly to wide range of inkjet printers, multiple print count, reduction enlargement, rotate, mirror, zoom, invert, multi-touch preview, area of interest, scale to fit, auto image color, lead and trail edge adjustments, print preview.
KIP Color Pro (optional)	Color Scanning	Scan directly to PDF, supports 24 bit RGB and 8 bit gray files, auto color presets, professional color management, scan directly to USB, scan dpi from 200-600, scan to FTP, hard drive, email, scan preview, auto size detection, despeckle, deskew.
	Color Copying	Color copy directly to wide range of inkjet printers, multiple copy count, stream copying, set copying, copy filters, closed loop calibration support, zooming, rotation, original and copy presets, professional color management, paneling, nesting, roll preview, zoom, mirror, invert, unlimited copy presets, lead and trail edge adjustments, copy preview.
	Color Printing	Print directly from RIP editor, crop, mirror, rotate, auto preview, crop area of interest, scale to fit, closed loop calibration, ICC support, photo spectrometer support, area adaptive sharpening and smoothing, brightness and gamma slider, tiling/paneling.

## Software Options

PDF Printing Keycode	Includes support for Postscript levels 1, 2 & 3, PDF 1.7
Accessory Kits	Secure Hard Drive Kit



# KIP 7970

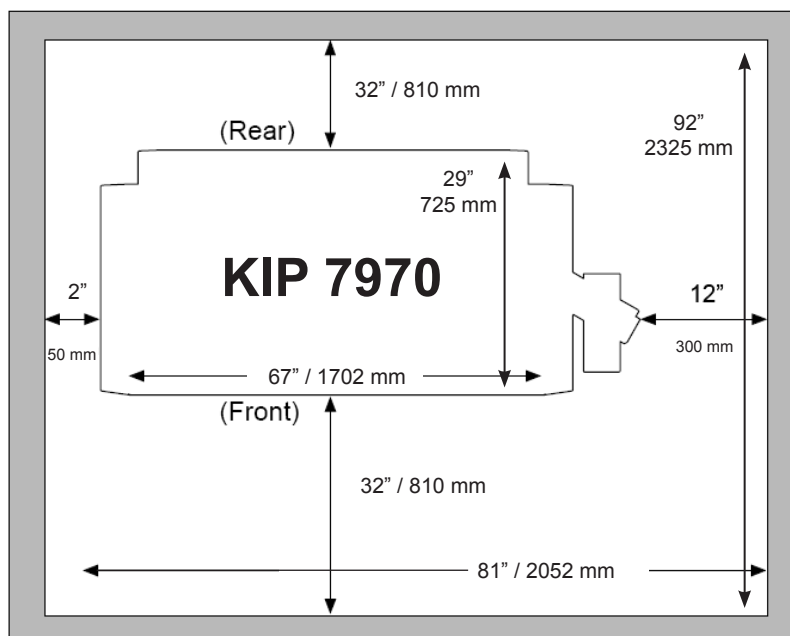
## SYSTEM INSTALLATION



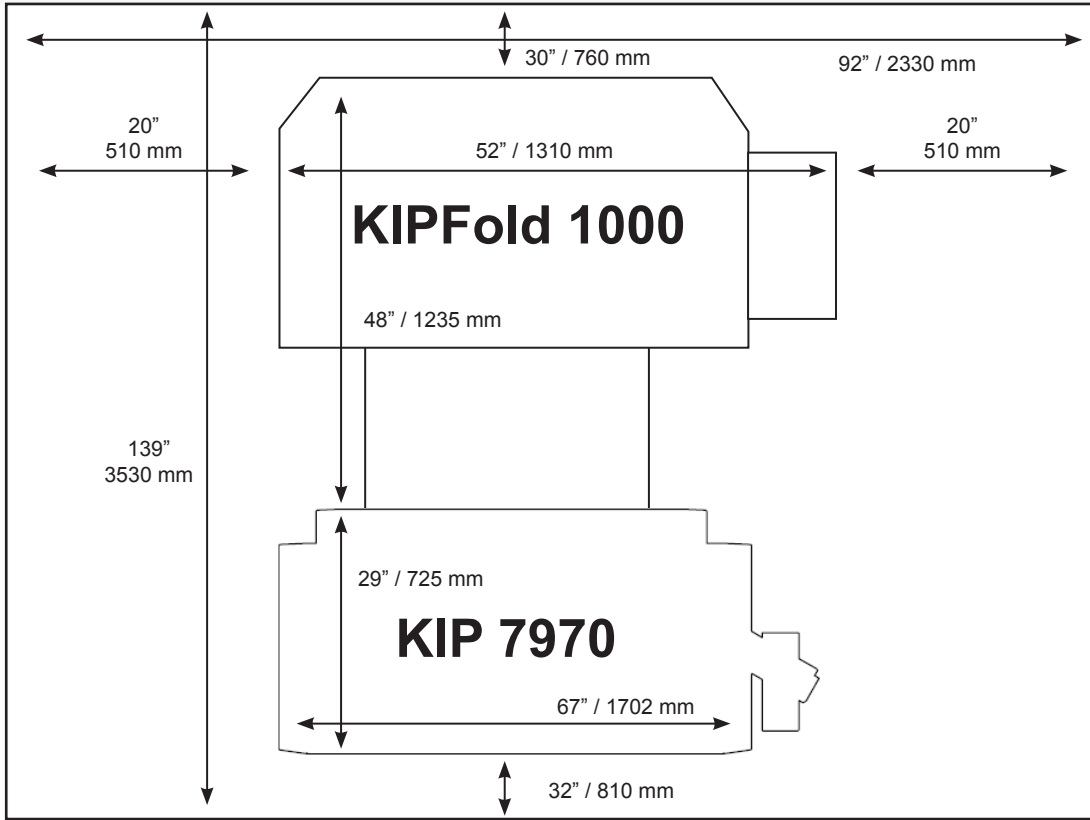
### Space, Electrical, and Environmental Requirements

Weight	860 lb. / 390 kg
Dimensions	67" (w) x 29" (d) x 54" (h) / 1,702 mm (w) x 725 mm (d) x 1,377 mm (h) with front delivery tray
Electrical (Dedicated)	220 V - 240 V, 50/60 Hz, 16 amp
Electrical Receptacle	Nema 6-20 R
Max. Power Consumption	2.1 kWh (printing), 1.1 kWh (standby)
Acoustic Noise	< 65 db (printing), <55 db (standby)
Room Temperature	50-86°F (10-32°C)
Room Humidity	15-85% (non condensing)

### Spatial Requirements (top view not to scale)



Spatial Requirements with KIPFold 1000 (top view not to scale)



Spatial Requirements with KIPFold 2000 (top view not to scale)

