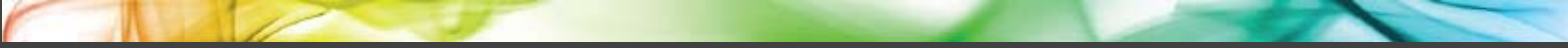




KIP C7800 PRODUCT GUIDE

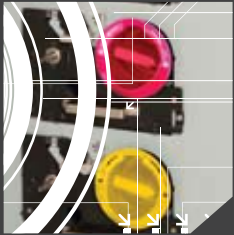
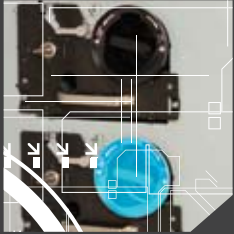




KIP C7800 PRODUCT GUIDE

TABLE OF CONTENTS

■	KIP C7800 TECHNOLOGY	5
■	KIP C7800 APPLICATIONS	10
■	KIP C7800 TOUCHSCREEN CONTROL	22
■	KIP C7800 TECHNICAL PRINT SOFTWARE	25
■	KIP C7800 GRAPHIC PRINT SOFTWARE	57
■	KIP C7800 INTEGRATED SOLUTIONS	72
■	KIP C7800 MEDIA GUIDE	76
■	KIP C7800 ECONOMICAL PRODUCTION	79
■	KIP C7800 COST REVIEW APPLICATION	82
■	KIP C7800 SCANNING COPYING SYSTEMS	86
■	KIP C7800 STACKING & FOLDING SYSTEMS	93
■	KIP C7800 SYSTEM SPECIFICATIONS	97



HIGH PRODUCTION COLOR PRINT SYSTEM

The KIP C7800 is a color and black & white high production print system. The system is a comprehensive solution for all types of wide format printing tasks that require the highest levels of quality and performance. The KIP C7800's workflow provides powerful print control for any production environment from a range of print submission applications, cloud printing, scan & copy, variable data printing and fully integrated stacking and folding.



The KIP C7800 saves serious time and money – making ultra high quality wide format printing more cost effective than ever before. Printing is faster. Operation is simpler. Finishing is automatic. Reliability keeps you up and running. Image quality will keep your customers coming back for more.

KIP C7800 TECHNOLOGY



KIP C7800 TECHNOLOGY

The KIP C7800 high production color print system has been meticulously engineered to deliver breakthrough quality and performance while providing real value from high powered technology, reliable performance and efficient operation.

- Full Color Printing
- Exceptional Image Quality
- High Production Printing
- Quick Switch Technology
- Media Load & Trim Assist
- Media Versatility
- CMYK Dry Toner
- Automatic Image Calibration
- Touchscreen System Control

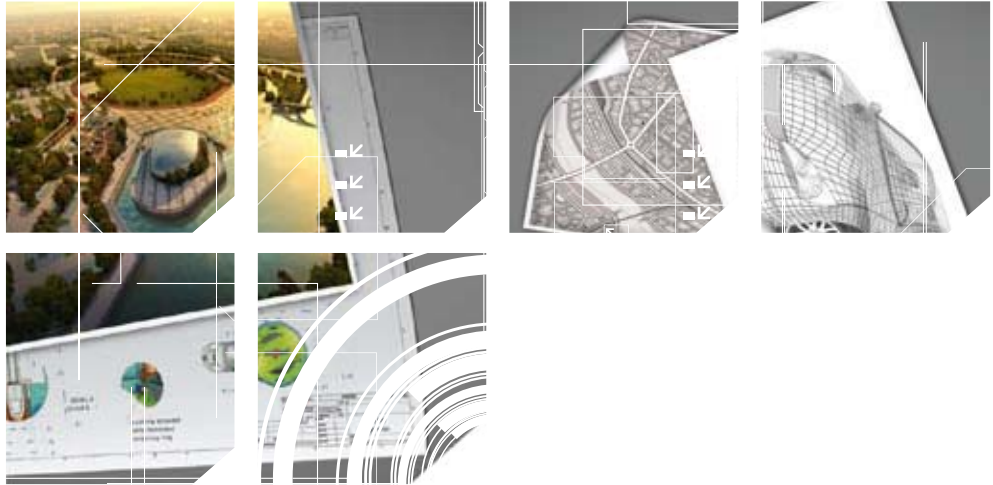
KIP C7800 TECHNOLOGY



BLACK & WHITE AND FULL COLOR PRINTING

This new system has been meticulously engineered to deliver breakthrough b&w and color print quality while providing real value from extremely high quality output, reliable performance and efficient operation.

Color print production benefits from amazingly vibrant colors, striking graphics, and photographic images that capture more of the subtle tints and hues of the natural world with unsurpassed color stability, first to final print.



EXCEPTIONAL IMAGE QUALITY

The KIP C7800 System sets a new standard for top quality, high demand printing of all types of wide format documents by delivering nonstop production levels with razor sharp line detail, superior half tones and smooth gradients while decreasing operational and ownership costs.

Four advanced KIP LED imaging heads provide outstanding 600 x 2400 DPI resolution. The KIP C7800 production system combines enhanced monochrome imaging and world-class color quality in an exceptionally versatile design, ideal for virtually any wide format printing environment.





HIGH PRODUCTION PRINTING

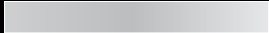
The KIP C7800 print system offers superb resolution at remarkable speeds,


- Up to 4,200sq. ft. / 390 sq. m. hour in B&W
- Up to 3,500 sq. ft. / 325 sq. m. hour in Color

Black and White Production – in b&w mode, the KIP C7800 produces up to a blazing 4,200 square feet per hour/390 sq. m., making it competitive with the print production generated by dedicated black and white LED technical printers. In addition, in b&w mode the print media completely bypasses all color imaging units, increasing system efficiency and lowering the overall cost of operation.

Color Production – with an operational speed of up to 3,500 square feet/325 sq. m. per hour, it is the single most productive wide format LED color printer in the world. Three quick change high production decks and integrated bypass sheet feeder feature a media capacity of over 4,500 square feet/418 sq. m. for nonstop printing.

The unprecedented productivity of the KIP C7800 addresses the current reality of demanding print runs and compressed delivery times coupled with the highest quality expectations. The excellent across the board performance of the KIP C7800 is sure to satisfy the most stringent demands on quality and productivity.

Up to 4,200 sq. ft. /390 sq. m. hour in B&W 

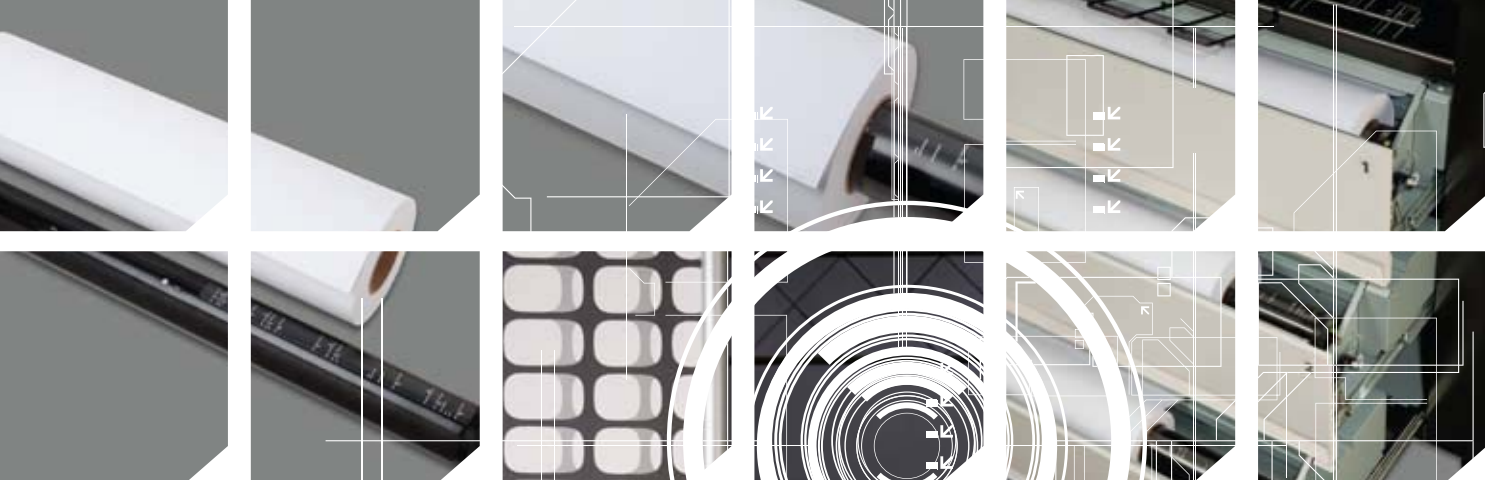
Up to 3,500 sq. ft. /325 sq. m. hour in Color 



QUICK SWITCH TECHNOLOGY

Three quick change high production decks and integrated bypass sheet feeder feature a media capacity of over 4,500 square feet/418 sq. m. for nonstop printing. The media decks and the sheet auto feeder deliver mixed size print sets at full production speed! KIP C7800 print technology eliminates roll switching delays for increased productivity.

Print jobs from all types of files are produced at an identical sheet size, making for a highly professional presentation of printed materials. In addition, sets are handled and distributed more easily because of their sheet to sheet uniformity.



KIP C7800 TECHNOLOGY



MEDIA LOAD & TRIM ASSIST

An ergonomic spindle system simplifies the process of loading the KIP C7800's 4,500 sq. ft./418 sq. m. media capacity and the printer automatically handles the media without user assistance.

A button is conveniently located in each media deck for quick, automatic roll trimming after loading. This simple process ensures reliable and accurate performance for continuous print production.

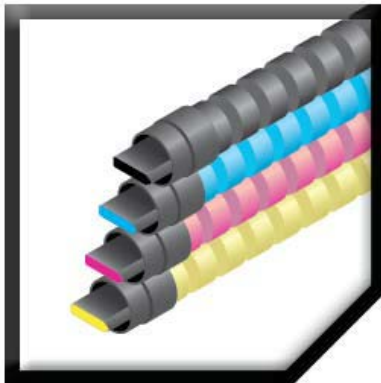


MEDIA VERSATILITY

The KIP C7800 easily accommodates high demand printing with long unattended runs via three integrated, auto-loading media roll drawers. The drawers handle media rolls from 11" to 36" / 210 to 914mm wide and provide ultra-fast switching between rolls for collated sets of varying sizes or media types with no delay between prints.

In addition, an integrated cut sheet feeder provides expanded versatility for handling specialty media types.

The KIP C7800 features a robust new braking system designed to ensure uniform sheet sizes from all three of its integrated media rolls drawers at extremely high speeds, regardless of media type used or image complexity. For maximum productivity and operator efficiency, the KIP C7800 handles print images up to 130'/40 meters in length from any of its 3 integrated media roll decks.



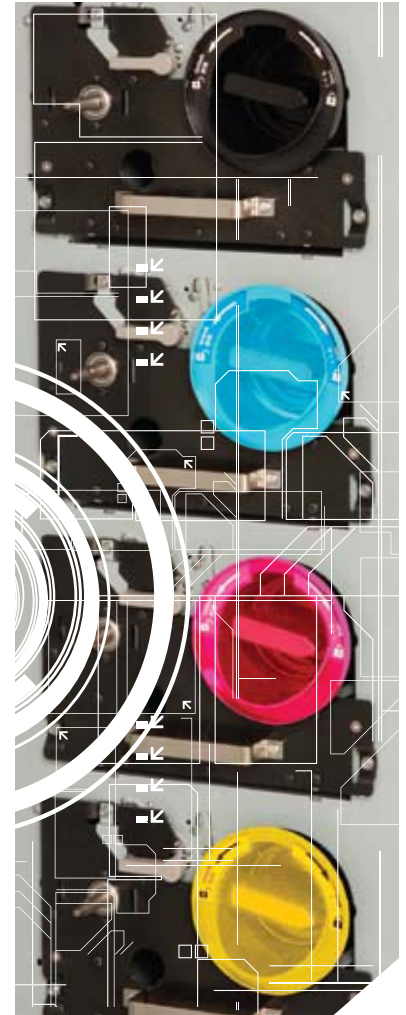
CMYK DRY TONER TECHNOLOGY

Each CMYK cartridge contains 1000gms of toner for a total capacity of 4000gms – allowing longer uninterrupted b&w and color print runs for continuous system productivity.

KIP genuine toner uses small, uniform particles to reproduce ultra-fine image detail. The KIP C7800's optimized 600 x 2,400 dpi print resolution achieves sharper lines, smoother graphics, and greater legibility.

All prints and copies generated by the KIP C7800 system are fully lightfast, meaning that they will not fade or exhibit color deterioration from exposure to light over extended periods.

The CMYK dry toner system employed by the KIP C7800 produces 100% waterproof documents that are suitable for outdoor applications even in inclement weather.



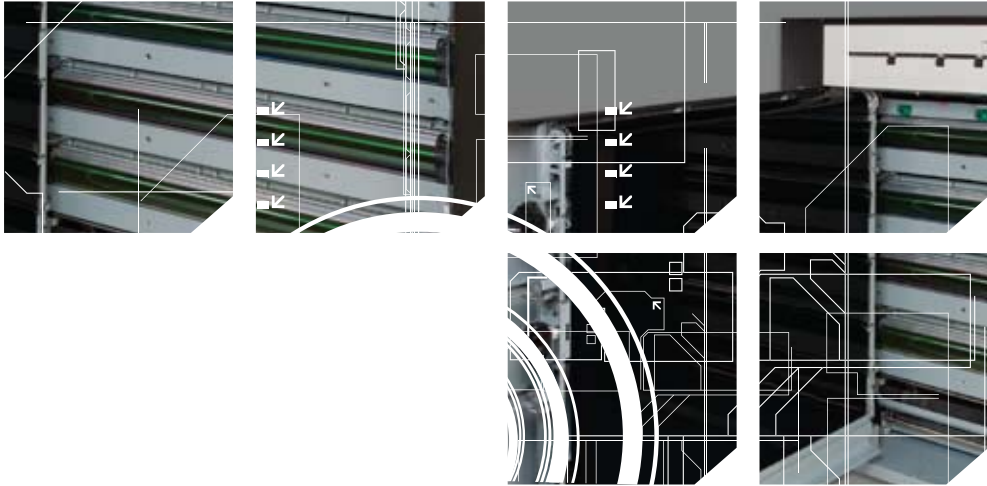


AUTOMATIC IMAGE CALIBRATION

The right media for every job – and the ability to handle difficult paper sizes, weights and surfaces in any weather. To do it all, the KIP C7800 provides state-of-the-art technologies for maintaining high-speed output with smooth-running reliability.

An exclusive single belt drive system performs automatic media calibrations for precise imaging, and bold, expressive color output. This exclusive design eliminates the need to perform individual media calibrations for correct color registration, saving time and increasing productivity.

Along with reliable performance, long-life drums, developer, CMY and black toner help reduce total cost of ownership – another big advantage of KIP C7800 technology.

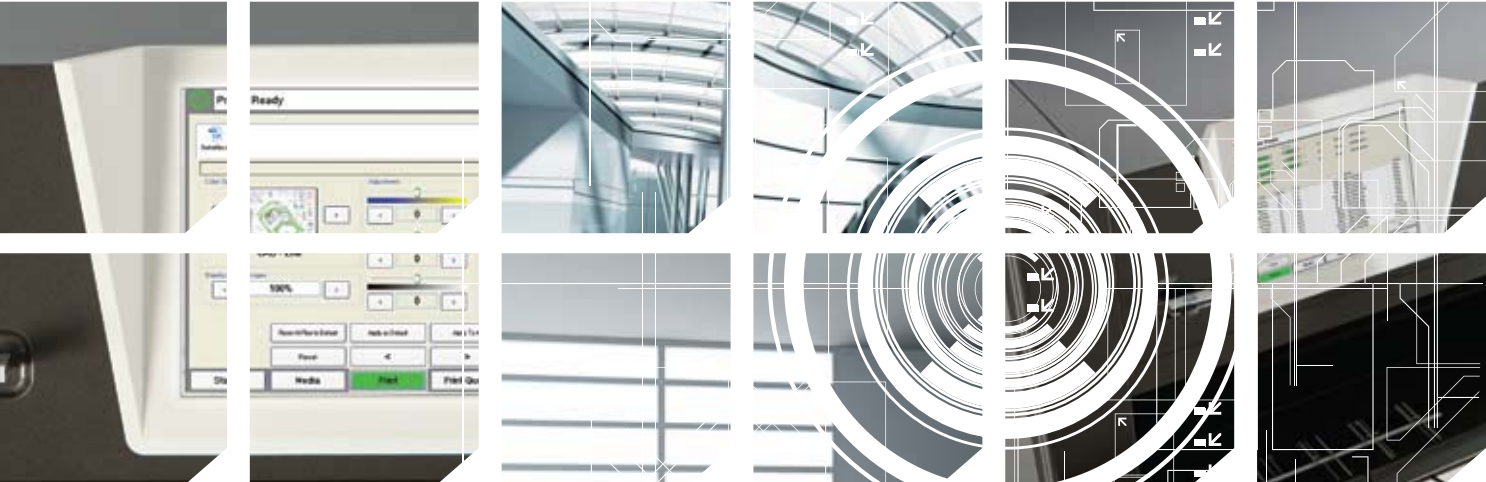


TOUCHSCREEN SYSTEM CONTROL

A large touchscreen makes operation simple, even for personnel without special training. All major system functions are available at your fingertips from a single interface.

The on-board color LCD touch-panel of the KIP C7800 provides a powerful combination of control plus convenience – because you don't have to leave your printer to perform the command functions that make your work more productive.

The large display area provides plenty of room to control job queues, review system status, print from USB or network locations – and get a large, full color look at image files before you print, make changes and see your results immediately.



KIP C7800 APPLICATIONS

TECHNICAL DOCUMENTS



TECHNICAL DOCUMENTS

Manufacturers, industrial design firms, engineering contractors, builders, architects and government agencies all rely on technical drawings to successfully communicate business messages.

Not simply limited to black and white lines on paper, these documents encompass the full spectrum of color 3D renderings, graphical inlays, exploded view schematics, technical diagrams, manufacturing plans, architectural renderings and geographical maps.

■ Technical Applications

C7800 SYSTEM ADVANTAGES FOR TECHNICAL APPLICATIONS

PRODUCTION SPEED PRINTING

In the world of wide format color, production speed is a key element to market success, especially for high demand centralized printing environments. The KIP C7800 system offers superb resolution at remarkable speeds regardless of image content and coverage, thanks to proven KIP LED imaging technology. In addition, an ultra-powerful processing system and auto-switching media rolls provide non-stop printing for maximum production.

LOW OPERATIONAL COST

KIP C7800 systems provide real value and customer benefits from extremely high quality output, reliable performance and efficient operation. An exclusive belt drive system, along with reliable performance, long-life drums, developer, CMY and black toner help reduce total cost of ownership – another big advantage of KIP C7800 technology.

EXCEPTIONAL IMAGE QUALITY

Technical documents use color to add clarity and meaning to the information provided in a drawing, map, or rendering. Color enables the presentation of 3D-data in a two dimensional printout to highlight a critical area or to indicate a change, and color-coding is commonly used in diagrams, mark-ups and maps.

FINE LINE RENDERING

Technical diagrams are often complex and a printer needs to be able to produce sharp, fine lines that remain smooth through curves or oblique angles. The KIP C7800 delivers true 600 x 2,400 dpi imaging, making it highly effective for conveying detailed technical information.

SHARP LETTERING

Similar to line rendering, typical CAD drawings include fine print for call outs or details that need to be sharp and legible. Further, as color becomes more prevalent in drawings/renderings, the ability of the printer to produce crisp black text set against a background color becomes a critical component and the KIP C7800 delivers this with ease.

VERSATILITY

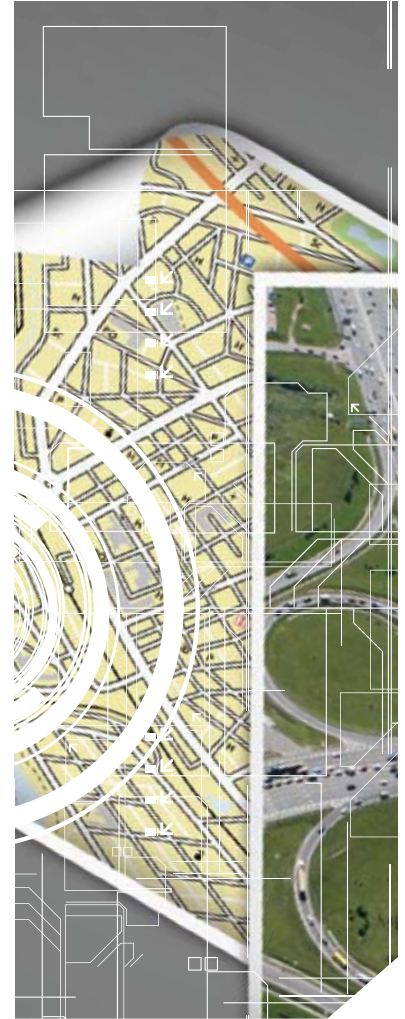
A significant number of the users in the technical market will use a wide format printer for CAD drawings the majority of the time, but will periodically need/want to produce posters, presentation graphics, or other output that is more commonly associated with business applications. The ability to conveniently shift between widely different graphic styles and different output media at full production speed and maximum resolution is a KIP C7800 advantage.

PRODUCING MULTIPLE SETS OF DOCUMENTS

In technical applications such as architecture, engineering and construction, users produce full sets of drawings that may include hundreds of pages of diagrams. The ability of the KIP C7800 to produce up to 4,200 sq. ft. / 390 sq. m. per hour is a major advantage in multiple sets printing.

FORMAT FLEXIBILITY

Over time, the technical documents market has evolved into an environment of diverse applications that produce a wide variety of digital file types. The use of common, graphical file formats such as TIFF and PDF is catching up with the use HPGL/HPGL-2 print languages (historically more prevalent in wide format printing). The KIP C7800 is a powerful color printing and imaging solution designed for CAD, GIS, and other documents in addition to requirements for durable, fade-resistant full color designs, illustrations, schematics, business graphics or posters.



TECHNICAL APPLICATIONS



“Drawings” and “Blueprints” are two commonly used terms to describe technical CAD designs printed on wide format sheets. Architects and Engineers create, modify and use the prints for construction projects. Technical design software applications such as AutoCAD are utilized to generate plans for all aspects of a project, while wide format printers produce images on paper for job-site use and quality control.

The individual needs of color CAD users varies widely depending on their habits and workflow standards. However, one constant requirement is for image accuracy and clarity. Wide format prints are full of tiny details that must be rendered legibly for effective communication. In addition, photos and raster images are increasingly being used in wide format prints, requiring careful reproduction – especially in color.

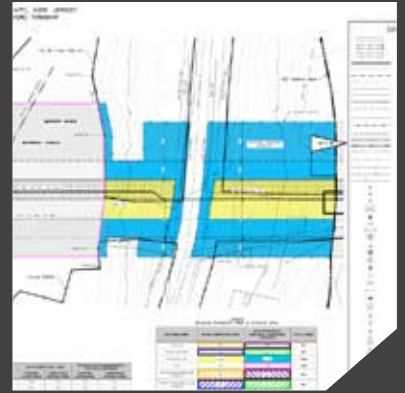
Market Segment	Target Customers	Applications
Corporate		
	Architects Engineers Construction Manufacturers Utilities Real Estate Developers Builders	General Contractors Facilities managers Job-site managers CAD designers
Retail and Franchise		
	Retail Outlets Grocery stores Food Suppliers Restaurant Companies Department Stores Mall Management Companies	New Store Planning Existing Store Redesigns Display Planning Logistics Centers Warehouse Layouts
Government		
	Government Agencies Fire Departments Municipalities Police Departments Parks and Recreation Courthouses	National Defense GIS Contractors Zoning Committees Planning Boards Public Works Litigation Services



Color CAD



**Black & White
Architectural Designs**



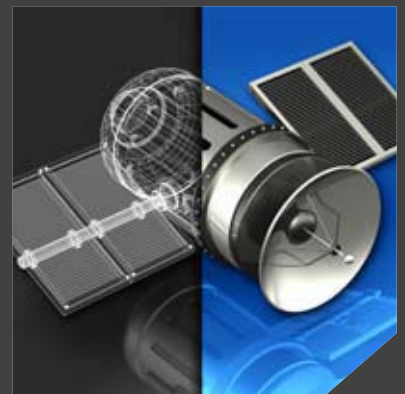
Utilities



Architectural Designs



**Black & White
3 Dimensional CAD**



3 Dimensional CAD



Diagrams



**Black & White
Aerial Overlays**



Aerial Overlays

KIP C7800 APPLICATIONS

DISPLAY GRAPHICS & BUSINESS COMMUNICATIONS



DISPLAY GRAPHICS & BUSINESS COMMUNICATIONS

The KIP C7800 system produces lightfast, UV-proof prints which do not fade or exhibit color deterioration from exposure to light. Colorful banners, bulletins, and signs posted in hallways or placed in windows attract attention while large, full color business-style graphics deliver the right message at meetings, sales presentations, and public viewing areas.

KIP C7800 prints are ideal for most applications because of their ability to deliver high resolution image quality at production print speeds with low operational costs.

- Business Graphics
- Point of Purchase
- Display Graphics

C7800 SYSTEM ADVANTAGES FOR GRAPHICS APPLICATIONS

PRODUCTION SPEED PRINTING

In the world of wide format color, production speed is a key element to market success, especially for high demand centralized printing environments. The KIP C7800 system offers superb resolution at remarkable speeds, thanks to proven KIP LED imaging technology. In addition, an ultra-powerful processing system and auto-switching media rolls provide non-stop printing for maximum production.

LOW OPERATIONAL COST

KIP C7800 systems provide real value and customer benefits from extremely high quality output, reliable performance and efficient operation. An exclusive belt drive system, along with reliable performance, long-life drums, developer, CMY and black toner help reduce total cost of ownership – another big advantage of KIP C7800 technology.

EXCEPTIONAL IMAGE QUALITY

The KIP C7800 System sets a new standard for top quality, high demand printing of all types of wide format documents by delivering nonstop production levels with razor sharp line detail, superior color fidelity and smooth gradients while decreasing operational and ownership costs.

HIGH RESOLUTION

Four advanced KIP LED imaging heads provide outstanding 600 x 2400 DPI resolution. The KIP C7800 system combines enhanced monochrome imaging and world-class color quality in an exceptionally versatile design, ideal for virtually any wide format printing environment.

LIGHTFAST PRINTS

Prints used in outdoor environments are exposed to light and UV rays which are harmful to many wide format prints. The KIP C7800 system produces lightfast, UV-proof prints which do not fade or exhibit color deterioration from exposure to light.

WATER RESISTANT PRINTS

All images generated by the KIP C7800 system are fully waterproof. When using waterproof medias, prints generated by the KIP C7800 make excellent outdoor displays. KIP C7800 output can be left in humid, wet and harsh environments with no negative impact on image longevity.

QUICK ROLL SWITCHING

Graphics applications require many different types and sizes of media, particularly in high production environments. The KIP C7800's three quick change high production decks and integrated bypass sheet feeder feature a media capacity of over 4,500 square feet/418 sq. m. for nonstop printing. The media decks and the sheet auto feeder deliver mixed size print sets at full production speed! KIP C7800 print technology eliminates roll switching delays for increased productivity.

AUTOMATIC IMAGE CALIBRATION

An exclusive single belt drive system performs automatic media calibrations for precise imaging, and bold, expressive color output. This exclusive design eliminates the need to perform individual media calibrations for correct color registration, saving time and increasing productivity.

READY FOR FINISHING

Prints generated by the KIP C7800 are ready for finishing immediately upon exiting the system. Since the KIP C7800's dry toner technology does not require any drying time, prints can be laminated, mounted, rolled and folded with no time wasted on image curing or drying. In addition, no costly drying systems are necessary.

RANGE OF MEDIA

The KIP C7800 supports a broad selection of media types for specific applications. Compatible media includes standard bond and photo gloss paper; technical and graphic vellums and films; banner material; billboard blueback and self-adhesive substrates. In addition, the KIP C7800 system handles extended paper weights from 18 to 40lb./70gsm to 150 gsm bond to further extend printing possibilities.



BUSINESS GRAPHIC APPLICATIONS

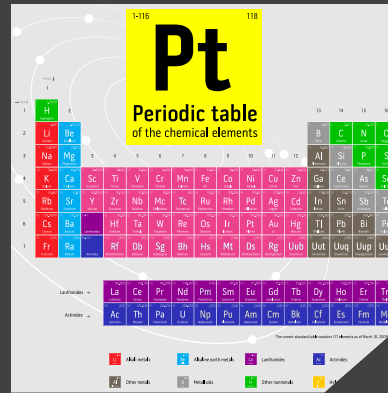
Business graphics are an integral part of the daily operations of corporate, service, academic, political and training professionals. Business graphics are used to clearly convey important information in formal settings. Wide format posters, signs and banners are an extremely effective method of communicating facts, data, statistics, charts and illustrations to convey key points. These types of documents are commonly displayed in corporate meeting rooms, hallways, public gathering areas, and on billboards to reach the largest possible audience for maximum impact.



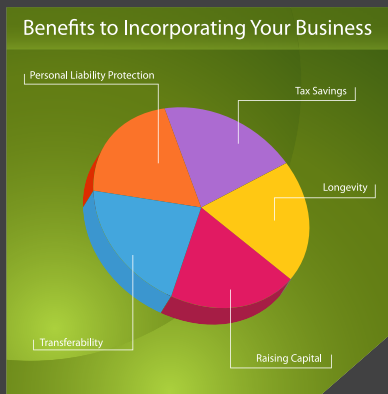
Market Segment	Target Customers	Applications
Corporate		
	Real Estate Developers Fortune 1000 Firms	Marketing Security Public Relations Employee Training Human Resources
Education		
	Board of Education Middle & High Schools Technical Schools Colleges & Universities	School Security Administrative Office Facilities Management Student Services Food Services Athletic Department Student Government
Service Industry		
	Hotels & Resorts Sporting Venues Concert Venues Entertainment Facilities Amusement Parks Golf Clubs Local Attractions	Catering Guest Services Sales Promotions Special Event Services
Institutions		
	Hospitals Medical Centers	Admissions Security Employee Training Facilities Management
Government		
	Government Agencies Fire Departments Municipalities Police Departments Parks and Recreation Courthouses	National Defense Tax Collectors Zoning Committees Planning Boards Public Works Litigation Services



Training Tools



Educational Displays



Statistics



Political Campaigns



Public Notice



Billboard

POINT OF PURCHASE / SALE APPLICATIONS



POP/POS displays, posters and signs – in store merchandising – represent a broad category of applications. In general, this includes any wide format prints that are displayed to promote products or services in a retail store near the point of sale. POP/POS displays are utilized by virtually every retailer. Consequently, retailers are constantly competing for mindshare in shopping centers, resulting in widespread usage and demand for POP/POS displays, posters and signs.

POP/POS display customers value quality above all else and expect adherence to their individual corporate identity guidelines. Despite the wide variety of images, print sizes and media used, POP/POS users expect minimal turn-around time and affordable cost. These users will benefit from the KIP C7800's UV-proof prints with no need for lamination or Accu-Shield coating.

Market Segment	Target Customers	Applications
Corporate		
	Product Manufacturers Corporate Promoters	Merchandising Promotions Marketing Advertising Sales Executive
Retail and Franchise		
	Retail Outlets Grocery Stores Restaurant Chains Department Stores Automotive Service Home Goods Lottery Car Rental Agencies	Store Management Merchandising Promotions Marketing Advertising Sales Executive
Product Distribution		
	Food Distributors Drink Distributors Car Dealerships Beauty Supplies Cosmetics	Promotions Product Introductions Marketing Pricing



Food Supply



Grocery Stores



Drink Distributors



Retail Stores



Product Distributors



Lottery Promotions

DISPLAY GRAPHIC APPLICATIONS

OVERVIEW

Display graphics – special events, public announcements, exhibition signage – constitutes a full segment of wide format, high quality printing. Oversized graphics are used to attract attention to grand openings, trade shows, open houses, seminars, ceremonies, receptions and performances. Pre-event and event signs are used commonly in all aspects of public and private gatherings to add excitement and provide information. Display graphics are widely used in commercial, public, educational and exhibition applications.



Display graphic professionals value sensitivity to their individual corporate identity guidelines and are especially concerned with delivery schedules. Display graphics to be used at special events are very time sensitive and must be delivered by a hard deadline.

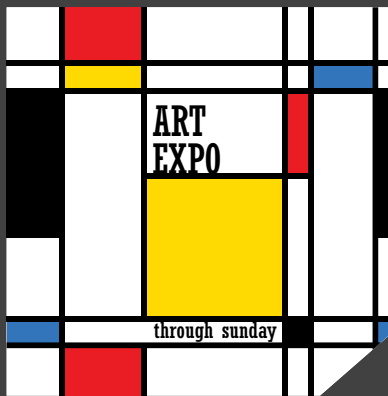
Market Segment	Target Customers	Buyers/Applications
Corporate		
	Consumer Product Suppliers Publishers Real Estate Developers Fortune 1000 Firms	Marketing Creative Services Public Relations Employee Training
Product Distributors		
	Food Distributors Drink Distributors Car Dealerships Beauty Supplies Cosmetics	Marketing Managers General Managers Sales Managers
Service Industry		
	Hotels & Resorts Sporting Venues Concert Venues Entertainment Facilities Amusement Parks Golf Clubs Seasonal Attractions	Catering Marketing Sales Conventions Promotions
Education		
	Middle & High Schools Technical Schools Extracurricular Activities Colleges & Universities	School Events Graduations Performances Student Clubs Student Government



School Events



Seminars



Exhibitions



Events



Grand Opening



Travel

KIP C7800 TOUCHSCREEN CONTROL



A large touchscreen makes KIP System operation simple, even for personnel without special training. All major system functions are available at your fingertips from a single interface. The on-board color LCD touch-panel of KIP systems provides a powerful combination of control plus convenience – because you don't have to leave your printer to perform the command functions that make your work more productive.

The large display area provides plenty of room to control job queues, review system status, print from USB or network locations – and get a large, full color look at image files before you print, make changes and see your results immediately.

MAIN SYSTEM TOUCHSCREEN

The main status screen for the KIP C7800 contains valuable system information at a glance. Users can see the current status of the printer including toner, paper levels and current printing jobs. Any error notifications or warnings will be displayed on the status bar at the top of the screen.



TOUCHSCREEN PRINTING

The File to Print menu allows a user to select up to 10 images to create a print set. Simple print modes are included and may be modified within KIP PrintNET. To ensure maximum image accuracy across a broad range of applications, operators have the ability to choose from preset quality adjustments for the output of the files being printed.

- CAD/Line
- GIS
- Business Graphics
- Photos
- Custom Settings



MEDIA SELECTION

The media selection screen allows users to select the type and size of media that is installed in each of the three integrated printer roll decks. No media calibration is necessary. Users may also define a “sub-type” that provides a meaningful name such as “Green Tinted Bond” for instance.



KIP PRINT

KIP Print network printing software is an easy to use application designed to provide operators with a fast and accurate means of producing high quality print sets from all types of wide format digital files.

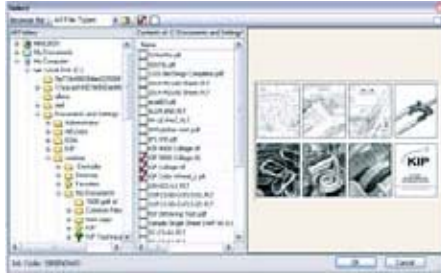
An intuitive ribbon style interface with an emphasis on job building; featuring column browsing, color thumbnail previews and total preflight control. Color and B&W documents are efficiently selected for printing in collated sets with the ability to designate custom output preferences before print submission.



KIP PRINT GALLERY



Intuitive New Ribbon Style Interface



Add Files & Build Jobs Easily



Advanced Imaging Controls

KIP Print - Key Features	B&W	Color
New Graphical User Interface	•	•
Easy to Use Automated Installation and Setup	•	•
Windows 7 Style Ribbon Bar for Easy Feature Selection	•	•
Thumbnail Preview and Image Size While Selecting Files	•	•
Graphical Choice of Predetermined Image Settings		•
Force Size Scaling to Page Size and Roll Width	•	•
Two-Up Printing for Multicopy Nesting	•	•
Output Size Updates as Scaling is Adjusted	•	•
WYSIWYP Thumbnail Image Viewer	•	•
Custom Job Build Columns	•	•
Individual Settings for Pages Within Multi-Page Files		
Re-Order Multi-Page Files	•	•
Custom Fold Pattern for Each File	•	•
KIP Cost Review Application	•	•
KIP Track System	•	•

KIP Print - Additional Features	B&W	Color
Job Building Features		
Add/Remove Job Build Columns	•	•
Reorganize Job Build Columns	•	•
Custom Job Build Columns Width	•	•
Advanced Job Building for Mono & Color	•	•
Show Multipage as Individual Sheets	•	•
Multicopy Nesting	•	•
Save Jobs for Future Printing	•	•
Load Saved or Compressed Jobs	•	•
Add Files Numerically or Alpha Numerically	•	•
Submit Jobs from Printer History Queue	•	•

• = New/Enhanced in latest version

KIP Print - Additional Features	B&W	Color
File Settings		
Select PDF Dither Patterns	•	•
Control PDF Minimum Object Size	•	•
Manage PDF Transparency Features	•	•
Unlimited Enlarge/Reduce Templates/Schemes	•	•
Unlimited Color Option Presets		•
Integrated on Line Folder Configuration	•	•
Allow Copies per File by Job	•	•
Create & Manage Custom Pen Tables	•	
Manual or Automatic Image Rotation	•	•
Stamp Settings		
Create Unlimited Graphic Stamps	•	•
Create Unlimited Text Stamps	•	•
Use Text & Graphics Stamps	•	•
System Administration		
Configure FTP as Print Destination	•	•
Print Productivity Reports	•	•
Scan Productivity Reports	•	•
Generate Meter Read Report	•	•
Manage Printer Queue	•	•
Connect to Unlimited # of KIP Printers	•	
Password Protect Administrative Features	•	•
Manage Mailboxes- Create & Delete	•	•
Real Time Printer Status- Media/Meter/toner	•	•
File Viewing		
Thumbnail Preview While Selecting Files	•	•
Image Size Preview While Selecting Files	•	•
Document Folding		
Custom Fold Patterns per File	•	•
Thumbnail Preview of Selected Fold Style	•	•
Adjustable Image Positioning for Proper Folding	•	•
Selectable Automatic Image Justification	•	•

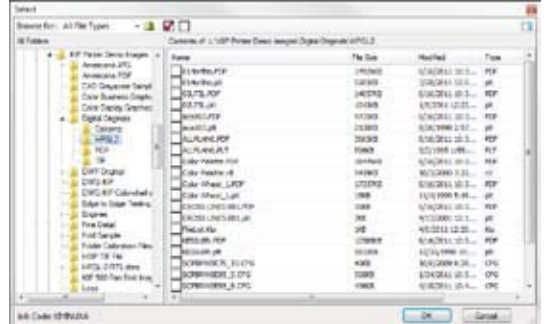
NEW JOB CREATION

Resets the application to the default parameters by clearing any remaining images selected previously - but not before asking the user if the current job should be saved first!

ADDING FILES

Browse to local drives to include hard drives, USB, CD, DVD and other optical drives as well as any network or FTP locations, for selection of print ready b&w or color files.

A thumbnail preview of the files prior to selection can also be helpful in the selection of the images.

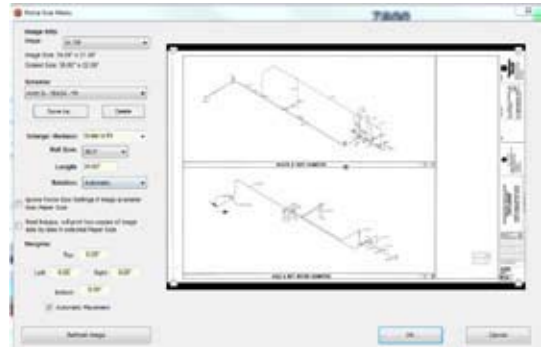


RECALLING JOBS

Recall a saved, recent or historical job for loading. Then perform any required parameters changes prior to reprinting.

REDUCE / ENLARGE – FORCE SIZE MENU

- Scale images to pages sizes, roll widths, page lengths, or percentage values.
- Nest images, add image shifting and page margins.
- Load pre-saved schemes
- ...all with real time image previewing of the image to final page size!



STAMP OR WATERMARK

Select a graphic and/or text as a stamp or watermark on your prints. The comprehensive functions include rotation, font type & font size, text color, text to graphic placement, stamp merging type, shading/screening, various text macros for automation, all with a stamp preview.

And of course, place your stamp anywhere on your image with the simple to use placement and offset margins. Then save and reload stamps as required.

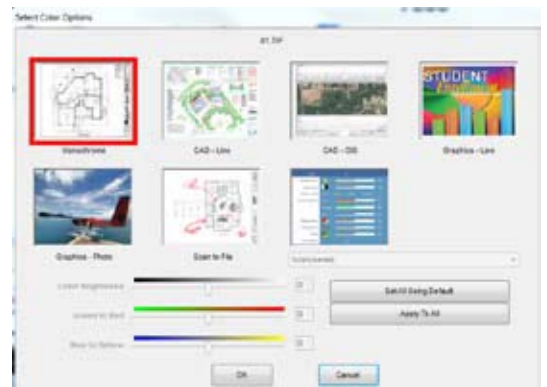


COLOR OPTIONS

Color imaging has never been simpler! Users have a graphical choice of predetermined image settings all based upon the type of the files or how they may wish for the images to be printed.

Simple color balance and brightness further enhance the images if required.

Behind this intuitive interface are comprehensive color management and configuration settings that are predetermined by color experts. These can be modified with numerous imaging options or additional custom settings created, all configurable via PrintNET.



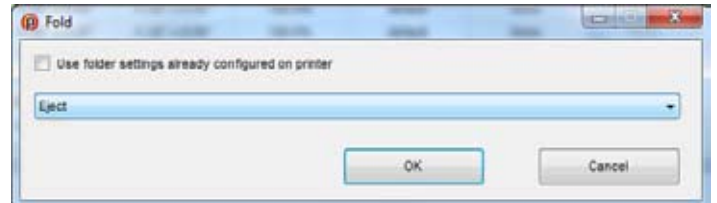
2-UP PRINTING

Nesting made simple! With a simple click, enable '2UP' printing which places the image side by side on a page to double your print production.

This is used in half size sets or when one image size is one half of the maximum print width of the KIP C7800.

FOLDING CONTROLS

KIP's fully integrated folding systems are easily accessed with predefined and custom fold patterns selected in the Fold sub screen.



PEN THICKNESS SELECTION

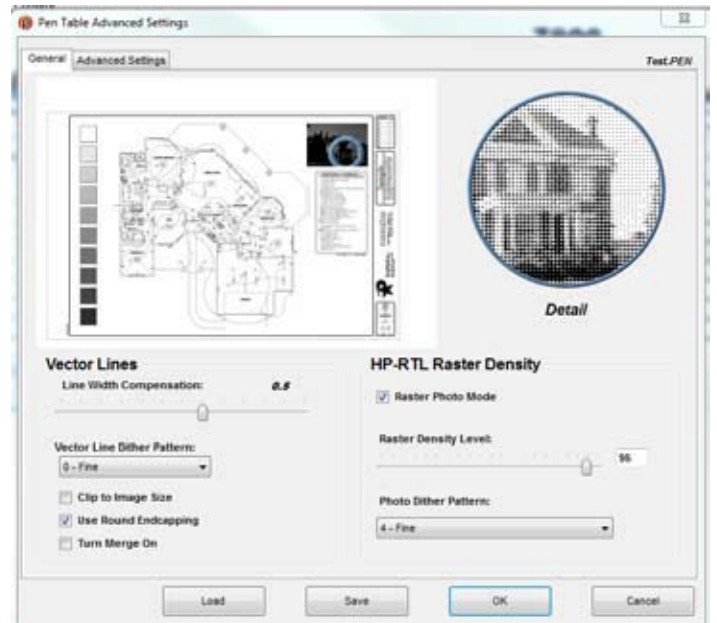
Allows editing pen widths and screening by pen number (with a range of Pen 0 to Pen 255.) of an HPGL / HP-RTL file. This forces the settings in the KIP Pen Table to override the pen information originally embedded in the file.

LINE WIDTH COMPENSATION

This allows addition and subtraction of pixels from the overall width of all vector lines.

VECTOR LINE DITHER PATTERN

Users have 2 choices of vector line dither patterns. This will alter the appearance of vector grayscale in different ways.



HP-RTL PHOTO MODE

When a raster image has been embedded within a plot file, Raster Photo Mode should be used. Raster Photo Mode can be applied to all drawings, whether they contain raster images or not.

HP-RTL PHOTO MODE DITHER

Users have 3 choices of raster dither output patterns. There is no 'correct' setting. Set according to user preference.

HP-RTL RASTER DENSITY

This slide bar will modify the density level of the embedded raster image. The scale range is from 0-200. The higher the number on the scale, the darker the image will be. A density level can also be keyed into the text field.

CLIP TO IMAGE SIZE

This crops the file data to the start of image data. Apply when the file designer has saved the entire drawing area as part of the file. If an error "File Too Large to Print," occurs, clipping to Image Size is often the solution.

LINE MERGE

This enables the user to merge lines of different shades. When not applied the layers within the plot file determine how lines merge on each other.

USE ROUND END CAPPING

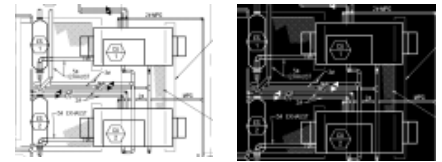
This will set end capping on lines in vector files to round ends instead of what has been specified in the plot file's Line Attribute command.

BORDER

This allows a border to be used in the file. A maximum border of five inches can be applied to each edge.

MIRROR AND INVERT

Selection of either (or both) of the buttons instantly commands the images to be mirror or inverted upon printing.



VIEW IMAGE

Grayscale & color images can be viewed with KIP Print.

Zooming, panning along with WYSIWYG printing to include the various adjustments in "Pen Table" and color adjustments are shown in the viewer for accurate printing the first time.



KIP PRINT THUMBNAIL VIEWER



As images are selected, they are displayed at the bottom of the screen. This viewer has functions as :

- Right-click to rotate
- Double-click to enlarge
- Drag-and-drop within the viewer bar for printing order

COST REVIEW APPLICATION INTEGRATION

KIP's integrated Cost Review Application and KIP Track system are included within KIP Print. User names, Job Numbers and Distributions can be added to any job for review by KIP's Cost Review Application.

Media type , numbers of copies / sets, collation and cut sheet mode further to the user's control within KIP Print.

And if printing should be delayed until a specific date or time, these too can be included.

User Name:

Job Number:

Description:

Requested Time:

Date:

Media Type:

of Copies: Collate CutSheet

SELECTED FILE INTERFACE



	Selected Files	Page Number	Color Option	Enlarge / Reduce	Pen Table	Stamp	Fold	Rotation	PDF Dither Mode	PDF Min Feature Size	PDF Transparency	DWF Colors Black
1	C:\images\Renaming01.TIF	1	Monochrome	100.0%		None	None	Automatic				
2	C:\images\l12.pdf	1	Monochrome	100.0%	default	None	None	Automatic	Printer	Printer	Printer	
3	C:\images\Renaming02.TIF	1	Monochrome	100.0%		None	None	Automatic				

KIP Print's grid system not only displays the selected files to be printed and in which order but also serves as a means to control various individual image parameters and settings. The grid can be customized to add or remove unused functions for ease of operator use.

Selected Files, lists the order in which the images are to be printed. Drag and drop files, inserting or removing files as needed.

Even Multipage files are noted in the Page Number column. Individual images within a file can be treated in the same manner as a file with only one image – all via KIP Print!

The columns of Color Options, Reduce / Enlarge, Stamp, Fold, Rotation, Pen Table, Image Alignment all allow the user to control these advanced settings for individual files.

PDF PRINTING

Controlling PDF dithering, transparencies and line widths have never been simpler with total accuracy as within KIP Print. Use standard modes or advanced users can now efficiently modify PDF printing preferences with KIP's variety of dither patterns and PDF controls.

FILE & PRINT SIZES

After the user's various imaging settings or parameters have been set, the grid notes the image size within the file along with the desired printed page size.

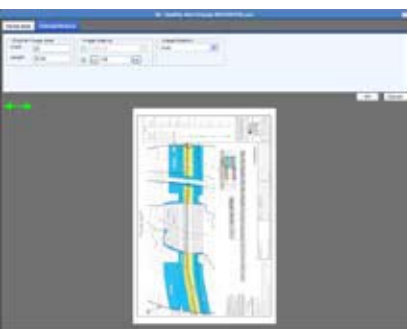
KIP PRINTNET



KIP PrintNET is a true web browser based print production tool that delivers powerful color file viewing & printing, job queue management and administration features without the need to install any software applications on network computers. Users may select and send single or multiple files to KIP systems, complete with image adjustments such as scaling, stamping and color management! In addition, KIP PrintNET generates Email reports detailing system usage on demand or at designated intervals.



KIP PRINTNET GALLERY



Web-Based, Browser Independent

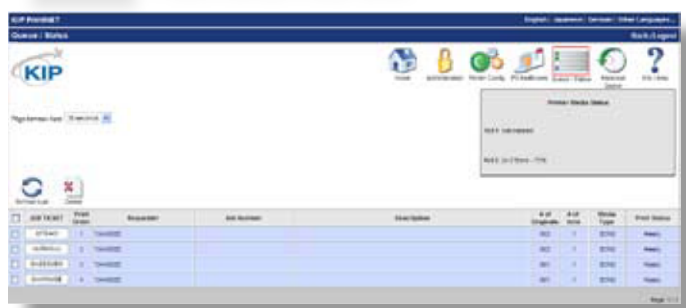
Color and B&W Image Viewing

Preset & Custom Color Options

KIP PrintNET - Key Features	B&W	Color
Can Be Used In Any Web Browser	•	•
Main Functions Are Identical Regardless of Browser	•	•
No Software to Install On Operator Workstations	•	•
Flash Enabled File Upload	•	•
New Updates Are Available to Operators Instantly	•	•
WYSIWYP File Preview	•	•
Graphical Choice of Predetermined Image Settings	•	•
Enlarge/Reduce Schemes Are Shared by All Operators	•	•
KIP Cost Review Application Integration	•	•
KIP Track System	•	•
Force Size Scaling to Page Size and Roll Width	•	•
Save Job for Future Printing Per Operator	•	•
Print Individual Page from Multipage	•	•
Two-Up Printing for Multicopy Nesting	•	•
Custom Fold Pattern for Each File	•	•
KIP PrintNET - Additional Features	B&W	Color
Job Building Features		
Add Files to Job Ticket From Mailbox	•	•
Click Thru Set Review	•	•
Set Printing Defaults by Job	•	•
Set Printing Defaults by File	•	•
Submit Jobs to Multiple KIP Printers	•	•
Transfer Files From Mailboxes Individual/Zip	•	•
Reprint From History Queue	•	•
File Settings		
Select Color Image Type		•
Multipage File Support	•	•
Create/Save Custom Pen Tables	•	•
Folder Integration Controls	•	•
Unlimited Enlarge/Reduce Schemes/Templates	•	•
Stamp Settings		
Create/Save Unlimited Stamps	•	•
Create Color Stamps		•
Use Graphic Stamp	•	•
Use Text Stamp	•	•

KIP PrintNET - Administration Features	B&W	Color
System Administration		
System Admin Features Password Protected	•	•
Cost Review App Setup and Accounting Rules	•	•
Mailbox Management - Add/Delete	•	•
Custom Logo for Printnet Screen	•	•
Online Help Guides	•	•
Downloadable KIP Software	•	•
Email Features		
Configure Email for Automated Notifications	•	•
Configure Email for Cloud Printing	•	•
Schedule Automated Meter Reads	•	•
Schedule Automated Service Internal Notification	•	•
Print Queue		
Manage Printer Queue	•	•
Set Up History Queue	•	•
Define Multiple Printers	•	•
Print Processing		
Configure Unlimited Color Templates		•
Set Up Color Custom Filters		•
Configure Monochrome PDF Processing	•	
Configure DWF Processing -Monochrome	•	
Enable Color Management		•
Enable Color Filtering		•
Enable Fine Line Control		•
Enhance Black Text		•

• = New/Enhanced in latest version





ADD FILES

Users may add files to the job by selecting the Add Files button. This will allow a user to browse available locations on the local PC, network or removable media for files to print.

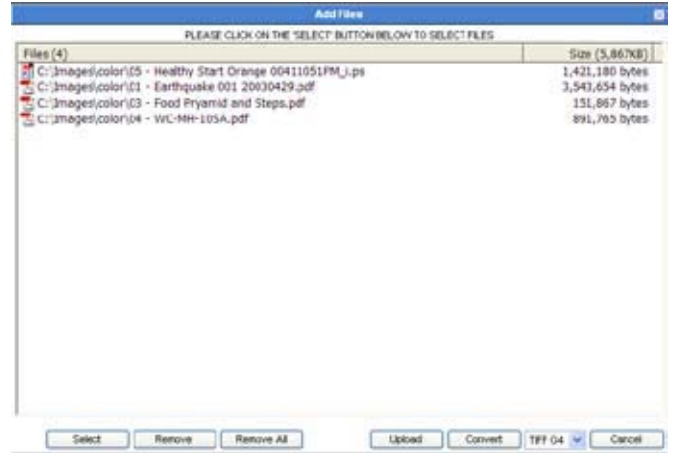
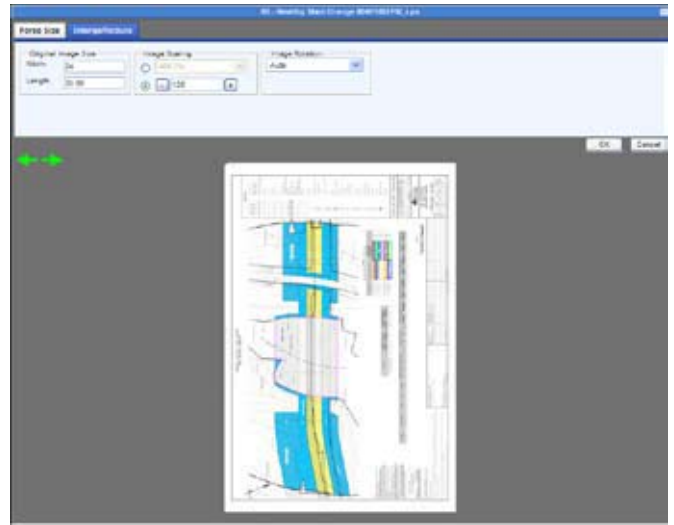


IMAGE VIEWING

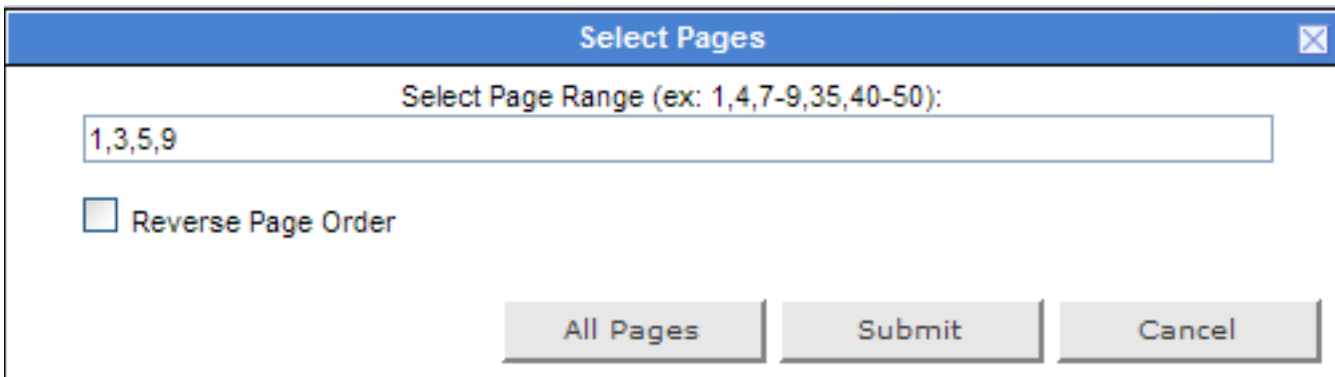
Once files have been uploaded, a user can view the selected files prior to printing. This process is done by clicking on the view icon next to the file name.

Once a file has been selected it will appear in the viewer. Users can now scroll through all of the files in the job by clicking the Left/Right arrows in the upper left corner of the viewing window.



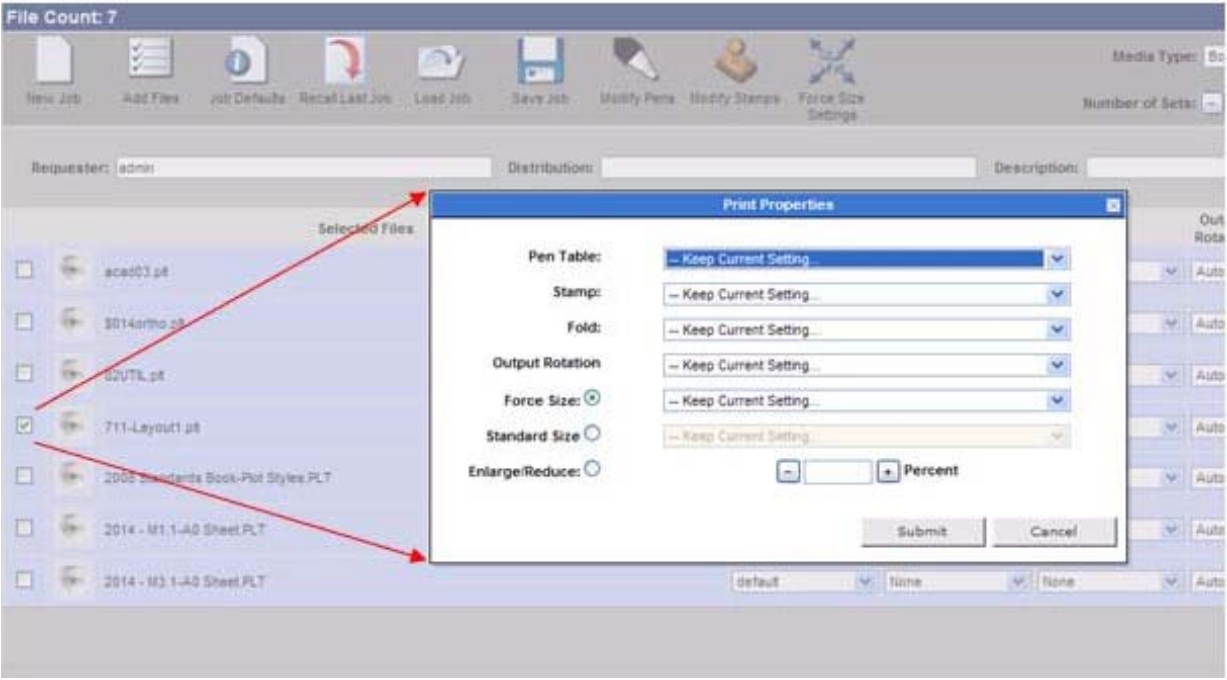
SELECT SPECIFIC PAGES FROM MULTIPAGE FILES (.PDF/.DWF)

KIP PrintNET allows for the selection of a specific page or page range from multipage .pdf & .dwt files. The operator has the ability to print all pages or specific pages in a multipage PDF or DWF file. Multipage files are auto detected.



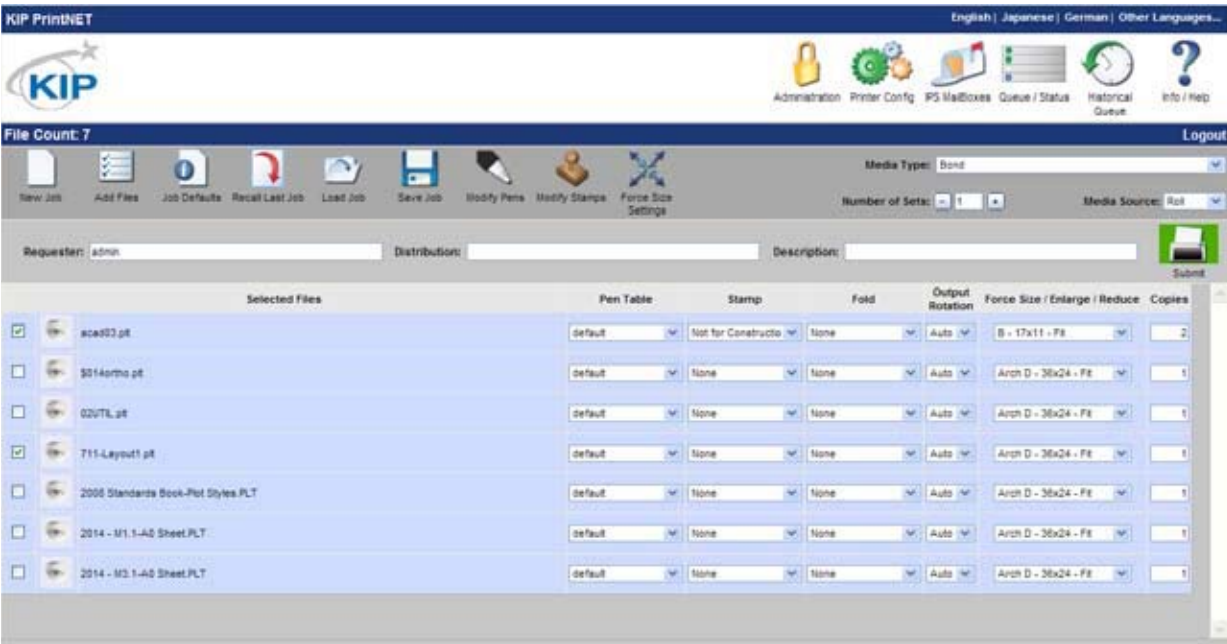
PRINTING PROPERTIES

If multiple files are selected to be printed, a user can make changes to a specific file or to multiple files within a job set. This is done by selecting the file (or files) desired right click and selecting properties. User is able to make changes regarding the Pen Table, Stamps, Fold, Output Rotation and Force Size settings. These changes will then be applied to those files in that job.



INDIVIDUAL PARAMETERS

Individual Parameters allows the user to the ability to create a custom job with complete control over the preferences of each file to be printed. Users have the ability to change the Pen Table, Stamp, Fold Parameters, Output Rotation, Force Size/Enlarge reduce settings and Number of copies for each file selected in the print job independent of any setting on other files.



JOB MANAGEMENT



RECALL LAST JOB

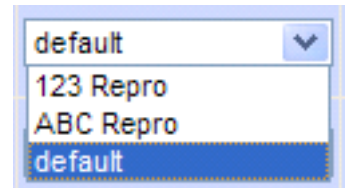
Select to recall the last submitted job. This function preserves all printing parameters. The ability to recall the last job becomes available immediately after job submittal.

SAVE JOB

When logged on as a standard user, select this option to save the current print job along with the printing parameters. If logged on as an administrator, the administrator may view all jobs saved by each user. Standard users may only view jobs saved within their login session.

LOAD JOB

When logged on as a standard user, select this option to load a saved print job with printing parameters retained. If logged on as an administrator, the administrator may view all jobs saved by each user and may load any print job. Standard users may only view jobs saved within their login session.

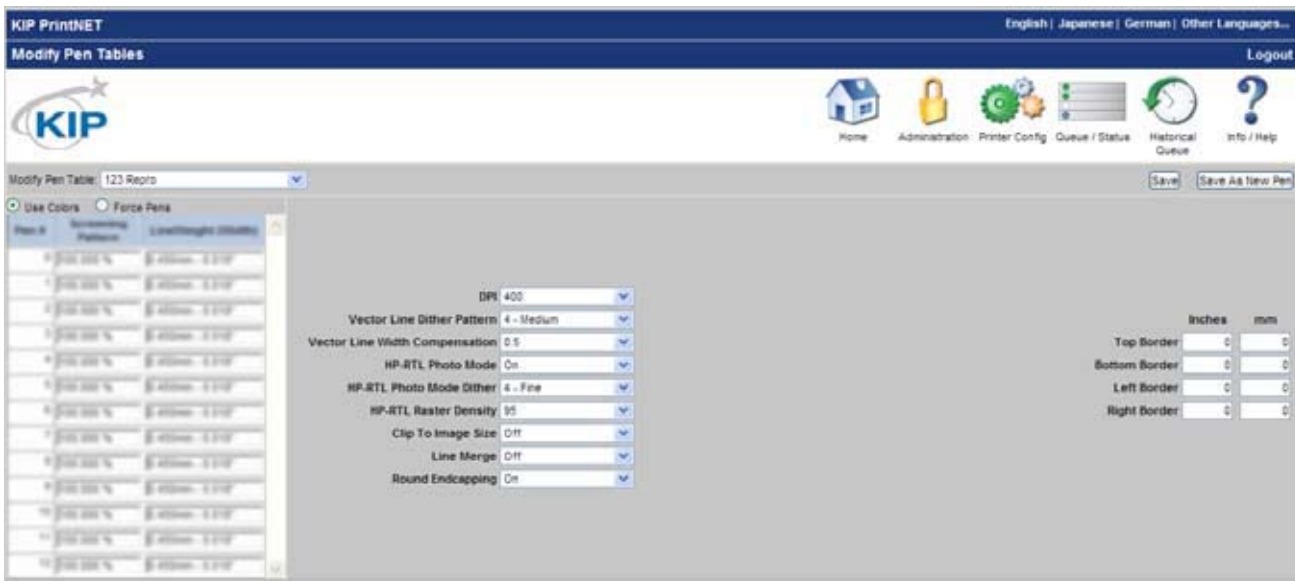


HPGL / HP-RTL PEN SETTINGS AND IMAGE ADJUSTMENT

Pen type and styles can be created and applied to vector or hybrid (HP-RTL) files. They can include pen widths, raster density. These can be selected from the Pen Table drop down list.

MODIFY PENS

This feature gives operators the ability to Modify or Create new Pen tables. Modification of settings for vector plot files, pen table and screening information can be changed. Plot File Setup also allows borders, modification of halftone settings, dither patterns and more.



USE COLORS

This applies an HPGL file's native pen width information, and half toning information. Unless changes are being made to a customer's file "Use Colors" is the default setting. When "Use Colors" is active the "Force Pens" area is inactive.

PEN THICKNESS SELECTION

Allows editing pen widths and screening by pen number (with a range of Pen 0 to Pen 255.) of an HPGL / HP-RTL file. This forces the settings in the KIP Pen Table to override the pen information originally embedded in the file.

LINE WIDTH COMPENSATION

This allows addition and subtraction of pixels from the overall width of all vector lines.

VECTOR LINE DITHER PATTERN

Users have 2 choices of vector line dither patterns. This will alter the appearance of vector grayscale in different ways.

HP-RTL PHOTO MODE

When a raster image has been embedded within a plot file, Raster Photo Mode should be used. Raster Photo Mode can be applied to all drawings, whether they contain raster images or not.

HP-RTL PHOTO MODE DITHER

Users have 3 choices of raster dither output patterns. There is no 'correct' setting. Set according to user preference.

HP-RTL RASTER DENSITY

This slide bar will modify the density level of the embedded raster image. The scale range is from 0-200. The higher the number on the scale, the darker the image will be. A density level can also be keyed into the text field.

CLIP TO IMAGE SIZE

This crops the file data to the start of image data. Apply when the file designer has saved the entire drawing area as part of the file. If an error "File Too Large to Print," occurs, clipping to Image Size is often the solution.

LINE MERGE

This enables the user to merge lines of different shades. When not applied the layers within the plot file determine how lines merge on each other.

USE ROUND END CAPPING

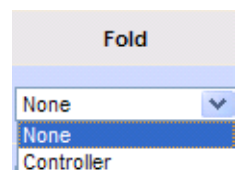
This will set end capping on lines in vector files to round ends instead of what has been specified in the plot file's Line Attribute command.

BORDER

This allows a border to be used in the file. A maximum border of five inches can be applied to each edge.

KIP FOLD PARAMETER SELECTION

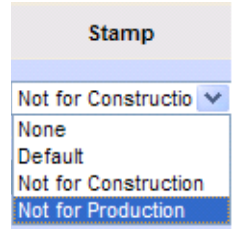
Fold settings can be created and applied directly to the job when a KIP Folder is present.





DIGITAL IMAGE STAMP SELECTION

Users can create and apply an available stamp scheme to printed documents.

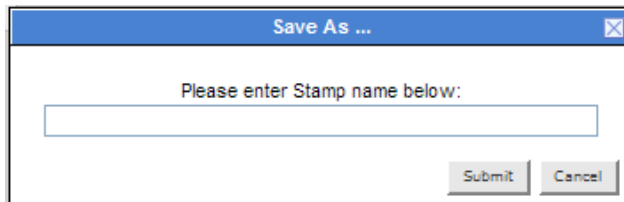
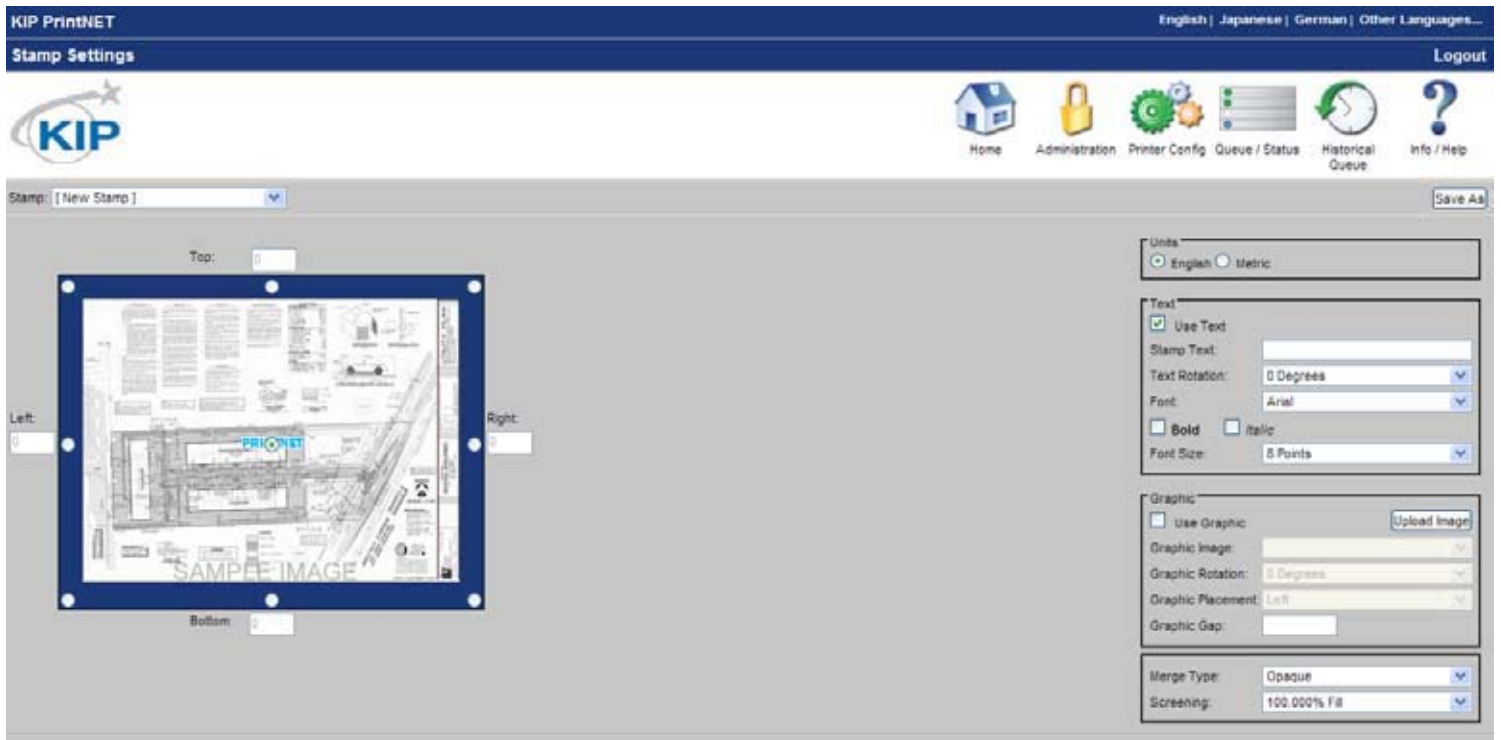


MODIFY STAMP

This feature will allow a user the ability to Modify or Create new Stamp, Watermark or Overlay to be used in the software. These stamps can be either Text, Graphics or both can be used.

STAMP SCHEMES

Custom Stamp settings are saved as schemes which can be used at different times or edited when necessary. Stamps may be selected from the list of available stamps or "New Stamp" can be used to create a new stamp.



FONT COLOR

From within the Stamp screen users have the ability to choose a Font Color for the stamp being created. Font Color can be select from:

- Black
- Cyan
- Magenta
- Yellow
- Red
- Green
- Blue

STAMP SETTINGS

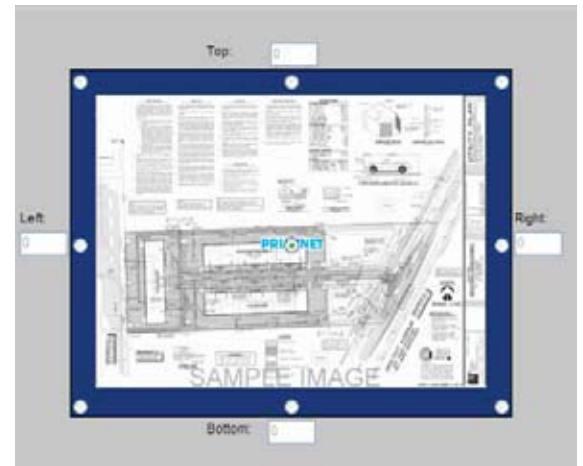
This Window will show the placement of the current stamp settings or where the stamp being created will be placed. There are 9 locations to choose from. Depending on the selected location the value window may be utilized for more precise placement of the stamp. If the value button is active a value up to 18" may be entered.

UNIT SELECTION

Allows for the choice between Imperial or Metric

TEXT STAMP

By selecting the Use Text check box the user has the ability to create a text based stamp with the desired information.



FORCE SIZE - ENLARGE / REDUCE

This feature will allow a user the ability to Modify or Create new Force Sizes to be used in the software. All setting can be saved for later use.

Scheme: Save customized settings for use at a later date

Units: Units to use for setting up Force Size parameters.

Margins: Add margins to one or more sides for image placement within the canvas.

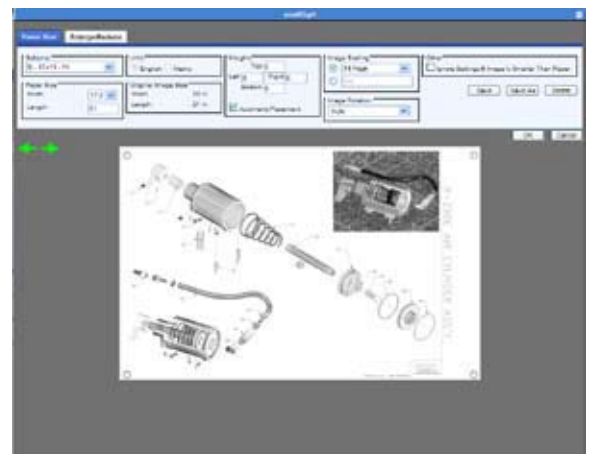
Image Scaling: Select from scaling percentages, scale to fit or enter a percentage

Paper Size: Configure output paper size. Width selection will force the job to a roll size.

Original Image Size: Displays the image size of the digital file

Image Rotation: Rotate images from 0-270 degrees

Image Size: Displays the image size of the digital file



USER NAME

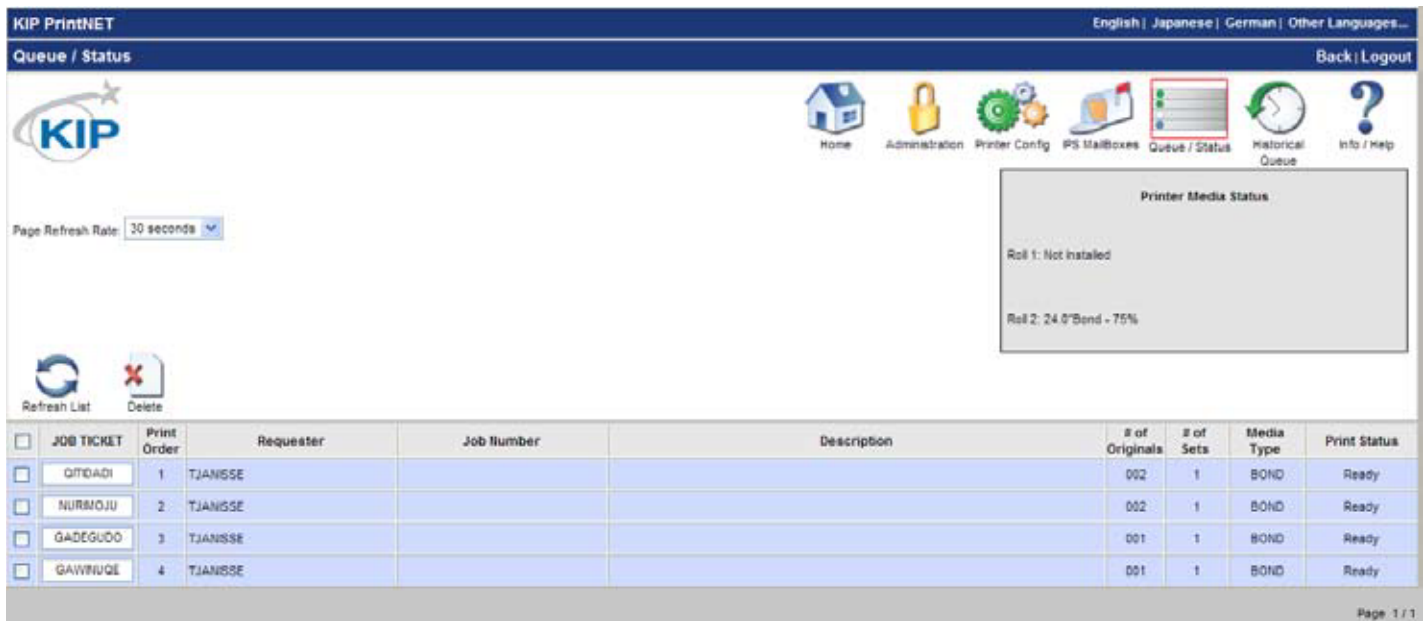
This is a field which can be used for accounting. Information entered is applied to the KIP Job and Print Logs.

DESCRIPTION

Description - This is a field which can be used for accounting. Information entered is applied to the KIP Job and Print Logs. This field is tied to ALL Reports!

PRINTER QUEUE MANAGEMENT

The Printer Queue can be managed by an Administrator and allows the administrator to see where jobs are in the queue. An Administrator also has the ability to manipulate the queue (ex. Change the position of a job in the Queue, Delete a job in the Queue and Edit a job in the Queue).



Page Refresh Rate: 30 seconds

<input type="checkbox"/>	JOB TICKET	Print Order	Requester	Job Number	Description	# of Originals	# of Sets	Media Type	Print Status
<input type="checkbox"/>	QITQADI	1	TJANISSE			002	1	BOND	Ready
<input type="checkbox"/>	NURMOJU	2	TJANISSE			002	1	BOND	Ready
<input type="checkbox"/>	GADEGUDD	3	TJANISSE			001	1	BOND	Ready
<input type="checkbox"/>	GAIVRIJGE	4	TJANISSE			001	1	BOND	Ready

Page 1 / 1

EDIT JOB

From within the Printer Queue the selected job can be reprinted as is or edited by “Right Clicking” on the desired job and selecting “Edit Job Ticket” and then selecting the desired available option.

Edit Job Ticket

You May Change 'Number of Copies' and 'Media Type':

Job Ticket:

Number of Sets:

Media Type:



COLOR OPTIONS

The Color Options screen will allow an Administrator/User to modify the values that control the selection buttons for printing. These include:

- CAD – Line is used for image data that consists primarily of lines such as CAD files.
- CAD – GIS is used for image data that consists of mixed line and photographic image data or CAD renderings.
- Graphics – Line is used on graphic image data where there is an emphasis on solid fill areas such as a pie chart or bar graph.
- Graphics – Photo is used on graphic image data where there is an emphasis on photos
- Scan-To-File – this is used for any scanned documents.
- Custom – Allows the Administrator/User to set up multiple custom filters defined by the customer.

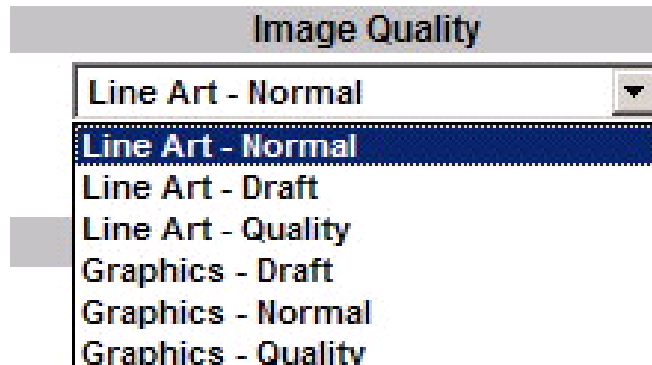


Image Quality:		Grey Composing:		Dithering Mode:	
Line Art - Normal		Black		Clustered Lines	
		<input type="checkbox"/> Greyscale Color Graduations		Screen Frequency (Ipi)	
				0	
Black Trapping:		Color Trapping:		Margins:	
0		0		Leading (px) []	
				Trailing (px) []	
Enhancements:					
<input type="checkbox"/> Enable Fine Line Control		Intensity		Edge Threshold	
		0		0	
Color Management					
<input type="checkbox"/> Enable Color Management					
<input type="checkbox"/> Enable Color Filtering:					
		CAD Colors			
RGB ICC Profile:		srgb			
CMYK ICC Profile:		euromscale			
<input type="checkbox"/> Enhance Black Text					
Rendering Intent:		Perceptual			
		Delete		Default Save	



IMAGE QUALITY

Image Quality allows the Administrator to select from the various selections and choose the best output for the file being printed.

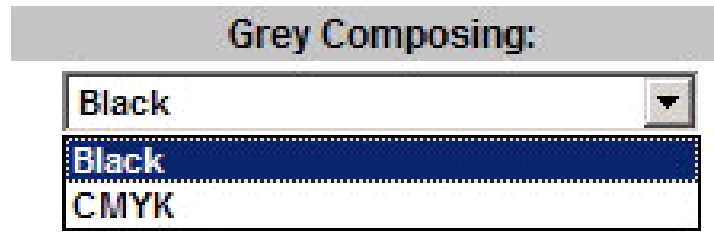


GREY COMPOSING

Grey Composing allows the Administrator to determine how the color black will be made.

Black – Uses black toner only

CMYK – processed black using CMYK to make the color black



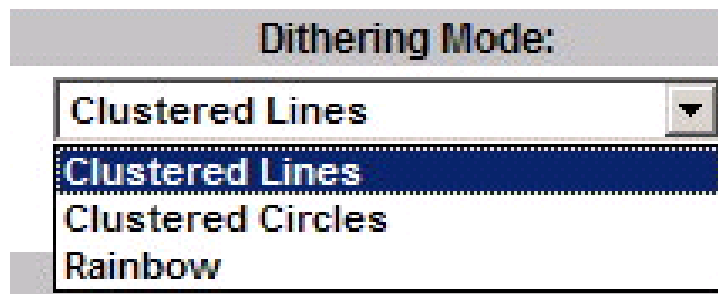
DITHERING MODE

Dithering Mode allows the Administrator to set the desired dithering method for the type of files being printed.

Clustered Lines – Ordered Line Pattern

Clustered Circles – Ordered Circle Pattern

Rainbow – Stochastic Pattern





ENABLE FINE LINE CONTROL

Enable Line Enhancement for CAD images that contain fine line image detail. When used on Graphic images, this feature can smooth text and long or curved edges. When enabled, grayscale lines will be dithered with Rainbow Standard while image fill areas retain clustered dither patterns. The amount of dithering depends on Sensitivity for Edge Detection and Edge Thickness.

Enhancements:

Enable Fine Line Control

Intensity **Edge Threshold**

ENHANCE BLACK TEXT

The option to turn on or off “Enhance Black Text” gives the user the ability to enhance otherwise light or faded text. When the option is on, CMYK text and graphics defined as black (C=M=Y=0, K=100) are printed with black toner only, at the maximum toner density of the print device.

Color Management

Enable Color Management

Enable Color Filtering: CAD Colors

RGB ICC Profile: srgb

CMYK ICC Profile: euroscale

Preserve Black Text

Rendering Intent: Perceptual

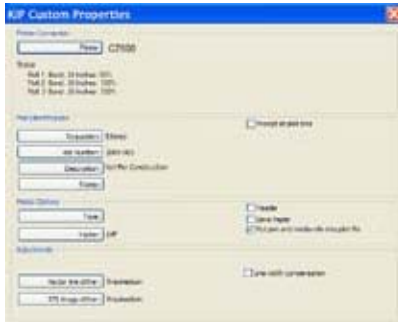
KIP AUTOCAD DRIVER

The KIP certified AutoCAD driver offers unique data tracking by username and job number. To assist in making printing decisions, two-way printer status allows users to view roll and media information. Fully compatible with AutoCAD up to 2012 (64 bit included)

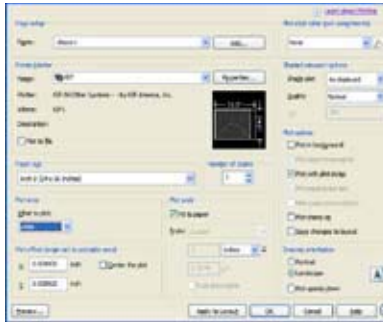




AUTOCAD CERTIFIED APPLICATION DRIVER GALLERY



Intuitive Features



B&W Printing Options



Color Printing Options

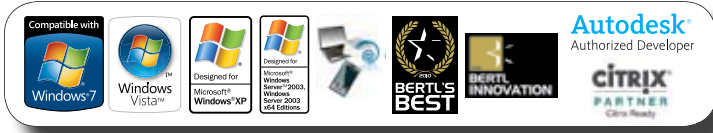
AutoCAD Certified Application Driver - Key Features	B&W	Color
Supported Versions		
Autocad 2007 Thru 2012 Supported	•	•
32 & 64 Bit Operating System Compatibility	•	•
Media Information		
Real Time Media Status	•	•
Custom Media Size Configuration	•	•
Media Saving Auto Rotation	•	
Include Pen & Media Information In Plot File	•	•
Color Controls		
Simple or Advanced Color Options		•
Simple Color Mode Image Type Selection		•
Advance Color Mode Image Quality Selection		•
Apply Color Filters		•
Color Management Controls		•
Color and Black Trapping Controls		•
Image Controls		
Vector Graphics Color Depth	•	•
Vector Graphic Resolution	•	•
Raster Graphic Image Quality	•	•
Image Entity Merge Controls	•	•
Rtl Data Controls	•	
Line Width Compensation	•	•
Raster Photo Mode	•	
Raster Image Gamma and Denisty Controls	•	•
Special Features		
KIP Cost Review Application	•	•
KIP Track System	•	•
Accounting -User Name Field	•	•
Accounting Job Number Field	•	•
Accounting Description Field	•	•
Link to KIP Print	•	•
Stamp	•	•
Select Fold Pattern	•	•
Place Header Label	•	•



• = New/Enhanced in latest version

AUTOCAD DRIVER

KIP certified application drivers support 32 & 64 bit printing features including set collation, fast spooling for multiple copies or sets, data tracking for job accounting, media selection & Windows 7 Device Experience. AutoCAD versions up to 2012 are fully supported.

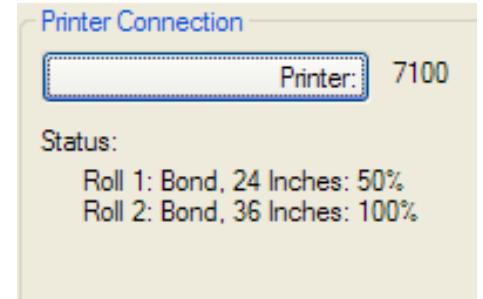


STATUS

This region shows the current:

- Roll width and type
- Any misfeeds
- Toner requirements (If available)
- Standby mode of the printer

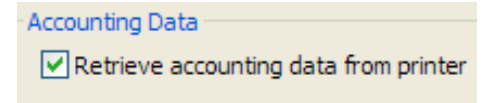
This is an active communication with the printer. The status is shown at the desktop of the user rather than requiring the user to visit the printer.



PLOT IDENTIFICATION

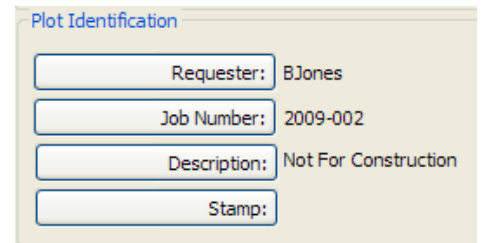
The following features can be used in environments where job costing or department allocations are required for prints on the KIP C7800. They can also be useful for print identification and print distribution as this information can be placed in a header.

Unified Accounting – The AutoCAD Driver points to a central location. i.e. A KIP C7800 that has a centralized list and rules for accounting. For information on how to set up unified Accounting please see the KIP Print or PrintNET sections. NOTE: Unified Accounting is on by default.



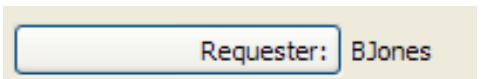
REQUESTER / USER NAME

This button allows the user to select a predetermined User Name from a drop down list or manually type a name. This field may be configured to be mandatory and password protected. The drop down variables and passwords themselves are also configured in the KIP Print Software. %Username may be used as an environment variable.



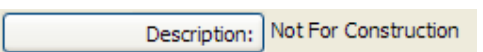
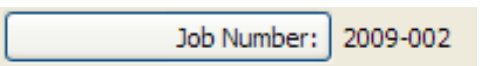
JOB NUMBER

This button allows the user to select a predetermined Job Number from a drop down list or manually type the job number. This field may be configured to be mandatory and password protected. The drop down variables and passwords themselves are also configured in the KIP Print Software.



DESCRIPTION

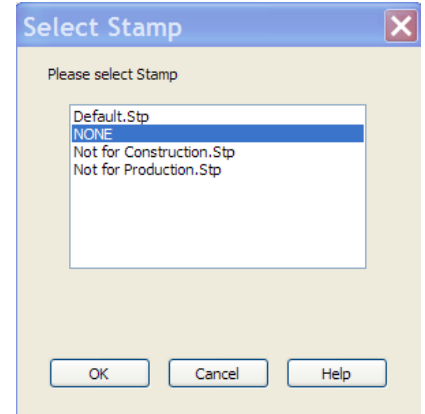
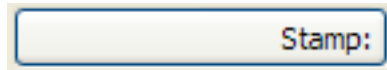
This button allows the user to select a predetermined Description from a drop down or manually type a description. This field may be configured to be mandatory and password protected. The drop down variables and passwords themselves are also configured in the KIP Print Software.





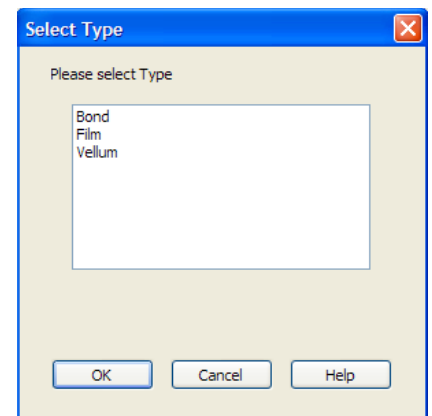
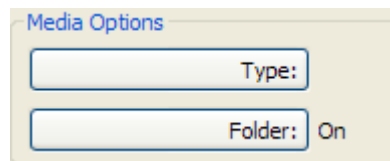
STAMP

This button allows a stamp (predetermined in the KIP Print Software) to be placed on the print(s). The creation and placement of the stamp is performed in the KIP Print application.



MEDIA TYPE

This list has the media types that may be installed in the KIP printer. They include Bond, Vellum and Film. Please note the Status region to confirm the media currently installed. If media selected for a print is not currently installed, the printer will “hold the job” and wait for the media type to be satisfied prior printing the job.

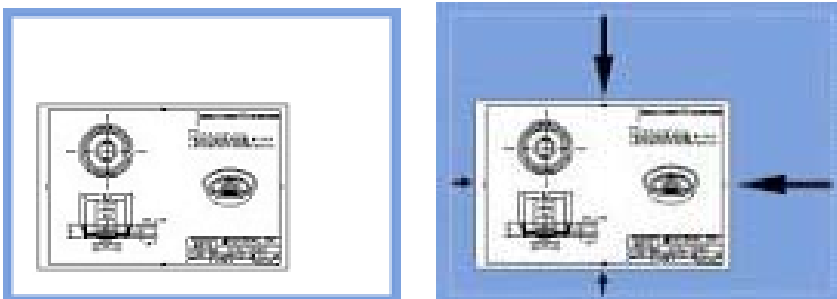


FOLD

Folds the print according to the fold patterns configured on the KIP IPS. Please note that the optional folder must be installed for this action to occur.

SAVE PAPER

If the media size selected is larger than the image size, this button will prevent excess media (waste) from being consumed in the print process. This occurs in the length of the print. This does not affect image output.



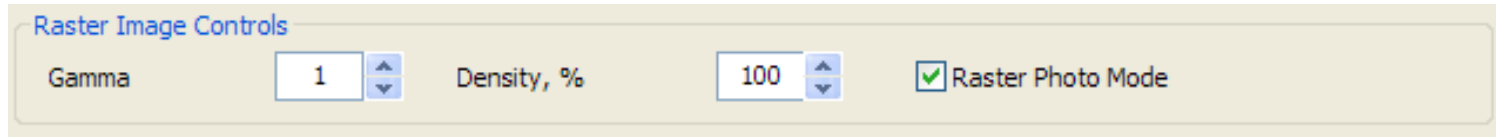
Note: If the Printer is set to “Closest,” the nearest roll width installed will be used to even further reduce media waste (more than one roll width must be installed of the same media type).

HEADER

A text header can be placed on the paper for print identification. The information placed in the Plot Identification will be printed on the print (not an available function when connected to a KIP Color System)



RASTER IMAGE CONTROL



GAMMA

This value sets the gamma level of embedded raster images on the print file. Gamma is the overall contrast of the image.

DENSITY

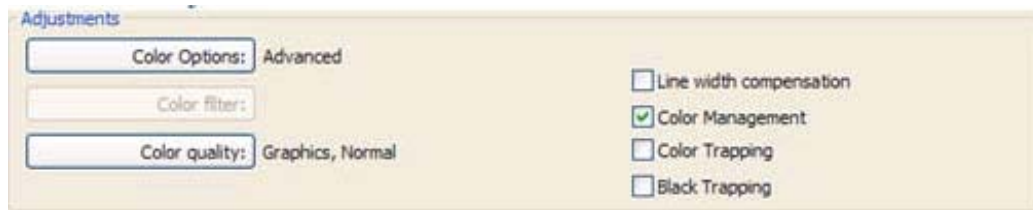
This value sets the density of the image without affecting lines or shades in a print (the vector data). This can be used to enhance photos or other raster images placed within a drawing. A higher value will have a greater density.



RASTER PHOTO MODE

This button is used to print the shading effects of a raster image. Some raster images are meant to be 100% solid (no tones such as a line). Others are pictures or drawings where shades are required. Select Photo Mode to print the raster image as shades rather than 100% solid. Embedded Excel or Word documents should have this un-selected for optimum output.

ADJUSTMENTS – COLOR SYSTEMS



COLOR OPTIONS

Allows the user to select between Simple and Advanced printing modes giving more or less options to choose from.

SIMPLE MODE

When Simple mode is chosen the user can select the Settings button and choose from five different pre-set printing modes (these are set up within KIP PrintNET)





ADVANCED MODE

When Advanced mode is chosen the user can select from different Color Qualities along with setting Line Width Compensation, Color Line Art Draft – Reduced quality mode (300 DPI)

- Line Art Draft – Reduced Quality Modes (300DPI)
- Line Art Normal - for normal quality line output (600 DPI).
- Line Art Quality - for high quality line output (600 DPI).
- Graphics Draft - Reduced quality mode (300 DPI)
- Graphics Normal – for normal quality graphic output (600 DPI)
- Graphics High – for high quality graphic output (600 DPI).



LINE WIDTH COMPENSATION

Controls line weights on a global basis. Values can be from -4.0 to +4.0. A higher value will result in all lines increasing in thickness. A lower value will result in all lines decreasing in thickness.

COLOR FILTER

Selectable custom filters for color image data processing. Filters are created and uploaded using the KIP C7800 RIP software.

COLOR QUALITY

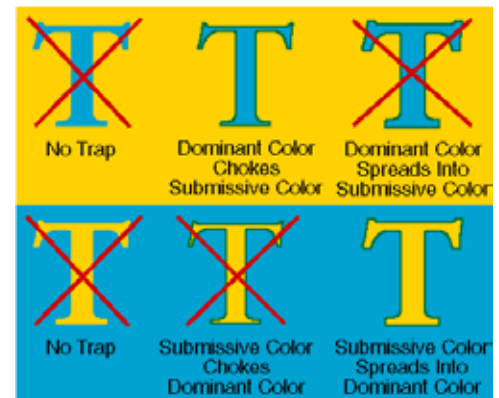
Selectable quality settings for optimum output. Line Art, Normal is best used for CAD type documents with only line work. CAD documents with heavy coverage of images should choose Graphics, Quality as this will provide the optimum dither pattern.

COLOR MANAGEMENT

Enables advanced color management options for increased color depth.

COLOR TRAPPING

When one color totally surrounds another, they must have either a choke or spread relationship. The examples below illustrate applications of choking and spreading. Notice that when a dominant color is surrounded by a submissive color, the dominant color chokes the submissive color (it draws the submissive color underneath its edges). Conversely, when a submissive color is surrounded by a dominant color, it spreads into the dominant color (bottom example, at right).



BLACK TRAPPING

In general, trapping is the overlapping of colors to prevent mis-registration and the resulting gaps of paper showing through (The image bellow is exaggerated to show the mis-registration).

Black Trapping Off



Black Trapping On



KIP CLOUD PRINTING



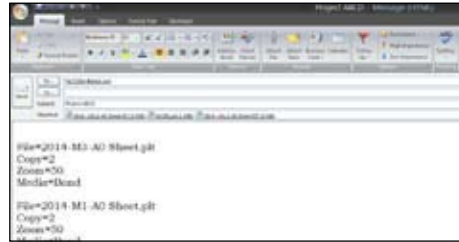
The ability to produce large prints using nothing more than an email with attachments and a few key words helps keep mobile clients on the go to stay productive.

- Use any phone, tablet, laptop or PC
- No need to install drivers or software applications
- No learning curve, no training
- Submit print ready files via Email attachments
- Optional keywords provide expanded flexibility





KIP CLOUD PRINTING GALLERY



Easy to Use Email Printing

Optional Keywords for Expanded Flexibility

Use any Phone, Laptop or PC

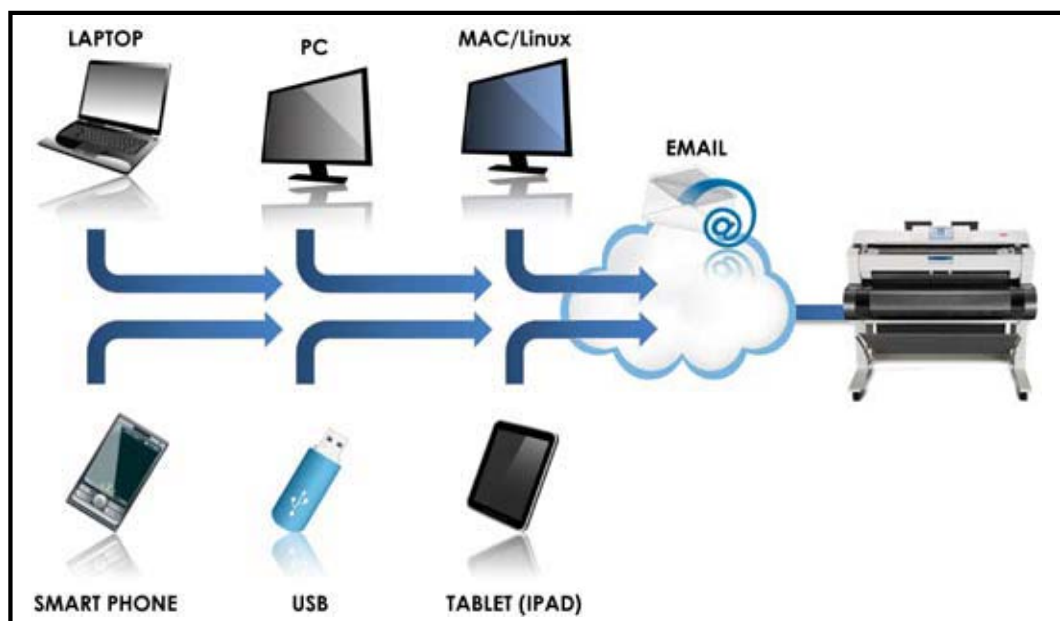
Driverless Convenience

KIP cloud printing is a flexible new approach to delivering print services — one that better responds to mobile business needs by providing a driverless cloud printing solution. Whether you're using an iPhone, iPad, PC, Mac, Laptop, or USB, KIP Web Apps simplify convenience printing from any web browser using your favorite Email provider.

KIP Cloud Printing	B&W	Color
Cloud Scanning		
Works with any Web Enabled KIP Printer	•	•
POP 3 Mail Compatible	•	•
IMAP Mail Compatible	•	•
Configurable Email Monitor	•	•
Custom Keyword Configuration	•	•
Configure for Archiving (Mailbox)	•	•
Configure for Printing (Job ticket)	•	•
Set Number of Copies	•	•
Set Media Type	•	•
KIP Cost Review Application Integration	•	•

KIP Cloud Printing	B&W	Color
Set Scale (Reduce/Enlarge)	•	•
Multipage File Support	•	•
Submit Files from any Mail Client	•	•
Supports Vcard for Presets/Templates	•	•
Color Printing Supported via File to Print	•	•
Cloud Scanning		
Cloud Scanning to Remote KIP Systema	•	•
Remote Scan Auto Print	•	•
Remote Scan Archiving	•	•

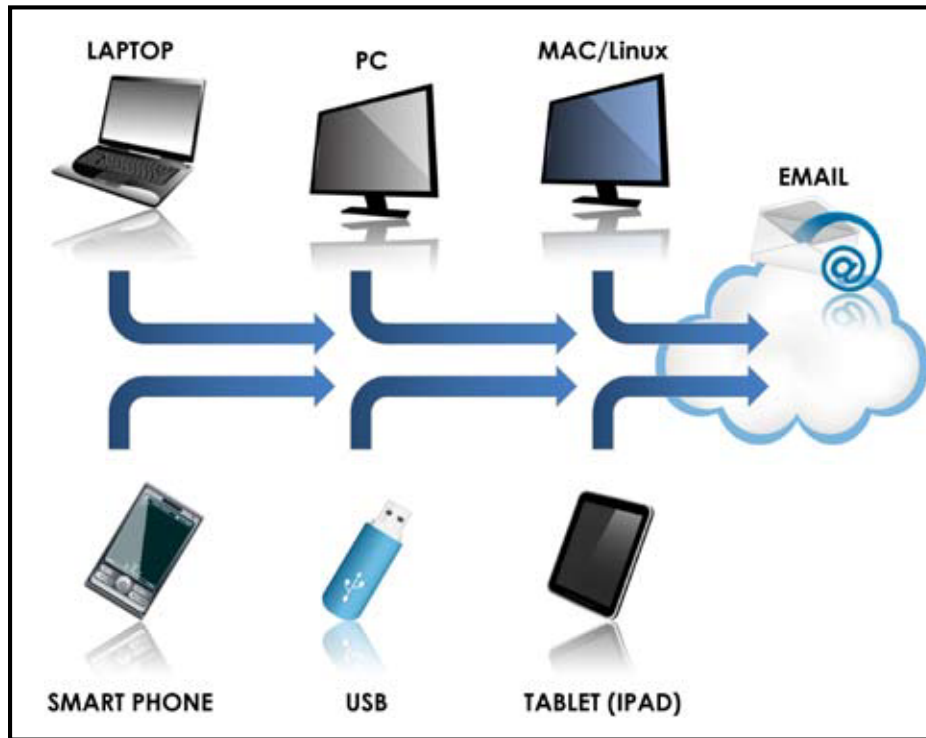
• = New/Enhanced in latest version





DRIVERLESS CLOUD PRODUCTIVITY

KIP Web Apps offer a flexible new approach to delivering print services — one that better responds to mobile business needs by providing a driverless cloud printing solution. KIP Web Apps are engineered for remote print submission environments. Whether you're using an iPhone, iPad, PC, Mac, Laptop, or USB, KIP Web Apps simplify convenience printing from any web browser using your favorite Email provider.



Firefox



Chrome



Safari



Internet Explorer

KIP CLOUD PRINTING

KIP Web Apps is a convenient, driverless print solution that lets casual users forget that complex front end printer software ever existed. With print job set up and submission this simple, users benefit from problem-free remote printing to the mailbox/queue of any KIP printer, or may be configured to bypass the mailbox for immediate output.



KIP CLOUD PRINTING

Busy professionals value the simplicity of features that effect daily workflow and printing flexibility. KIP Web Apps provide the ability to Email files to KIP systems for future viewing and printing.



DIRECT PRINT

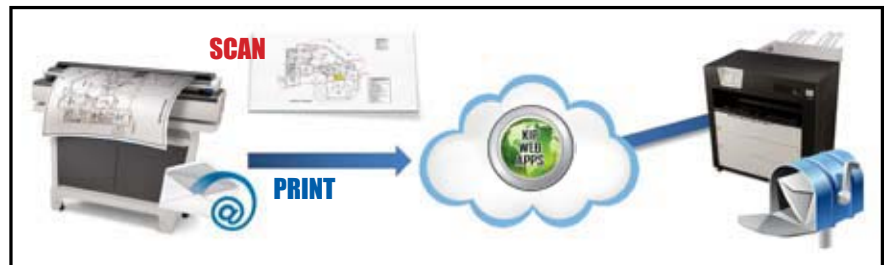
The ability to produce large prints using nothing more than an Email with attachments and print instruction key words helps keep mobile clients on the go to stay productive. Email files to KIP systems for future viewing and printing.




KIP CLOUD SCANNING

SCAN TO CLOUD QUEUE

A fresh approach to revising documents drastically improves modern collaboration efforts. These revisions & mark-ups may now be Emailed to a remote KIP mailbox for safe keeping or easy access for additional image editing activities.



SCAN TO PRINT

Color mark-ups encourage productivity by providing easy reference to changes, but have traditionally been difficult to share. Now, these mark-ups may be Emailed to another KIP system anywhere in the world or on the next floor for output on KIP C7800 systems.





USE EMAIL BUSINESS CARD TO ACCESS KIP PRINT SYSTEM

The Email Business Card contains all necessary information, including printer email address, key words, FAQ's and a formatting example showing what the email should look like.

PRE-FORMATTED EMAIL TEMPLATE

The screenshot shows a contact form for 'KIP Web Apps' with the following fields filled out:

- Full Name:** KIP Web Apps
- Company:** (empty)
- Job title:** (empty)
- File as:** Apps, KIP Web
- Internet:**
 - E-mail:** print1@abccompany.com
 - Display as:** KIP 700 Printer
 - Web page address:** www.abcddealer.com
 - IM address:** (empty)
- Phone numbers:**
 - Business:** (800) 252-6792
 - Home:** (empty)
 - Business Fax:** (800) 252-3935
 - Mobile:** (empty)
- Addresses:**
 - Business:** 39575 13 Mile Road, Novi, MI 48377
 - This is the mailing address

The **Notes** field contains a pre-formatted email template:

KIP Web Apps – Formatting Example:

To: print1@abccompany.com
 Cc: rsadler@abccompany.com
 Subject: Account # 0892 Project Name: Hospital
 Attached: RR Utility.pdf (8.1 MB); ZON MAP.PLT (1 MB); 125(1).TP (204 KB)

File = RR Utility.PDF
 Media = bond
 Copies = 3
 Size = 100%

File = ZON MAP.PLT
 Media = bond
 Copies = 15
 Size = 56%



EASY TO UNDERSTAND WEB APP SET UP AND EMAIL LAYOUT!

Click on the Email Business Card for any KIP printer to automatically launch a email to that printer, view formatting example and attach files for printing with print instructions.

READY TO USE – NO SOFTWARE INSTALLATION

Project ABCD - Message (HTML)

Message Insert Options Format Text Developer

Cut Copy Paste Format Painter Clipboard

Bookman Ol 12 A A Basic Text

Address Book Check Names Names

Attach File Attach Item Business Card Calendar Include

Follow Up Options

Permission High Importance Low Importance Proofing

To... Kip7100sr@gmail.com

Cc...

Send

Subject: Project ABCD

Attached: 2014 - M3.1-A0 Sheet.PLT (2 MB); 02UTIL.plt (1 MB); 2014 - M1.1-A0 Sheet.PLT (2 MB)

File=2014-M3-A0 Sheet.plt
Copy=2
Zoom=50
Media=Bond

File=2014-M1-A0 Sheet.plt
Copy=2
Zoom=50
Media=Bond

KIP FILE SHREDDING

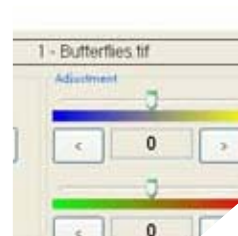
KIP Software includes the Department of Defense NISPOM specifications to securely delete (overwrite) all image data after a print, copy or scan job has been completed. KIP File Shredding (overwriting) processes and scheduling is configurable using KIP PrintNET.

The KIP three pass file shredding process complies with the NISPOM specification which consists of overwriting all image data locations with a character, its compliment and a random character. This method ensures that all image data can no longer be accessed using a data recovery device.

- Department of Defense (DoD) compliant
- Securely delete (overwrite) all image data
- Removes all remnants of image data
- Removes temporary conversion process data
- Schedule on a daily, weekly or monthly basis
- Easily configured within KIP PrintNET



KIP C7800 GRAPHIC PRINT SOFTWARE



HIGH PRODUCTION GRAPHIC PRINTING SOFTWARE

The KIP C7800 system features a diversified software suite that forms the most open, integrated and powerful wide format color imaging system available.

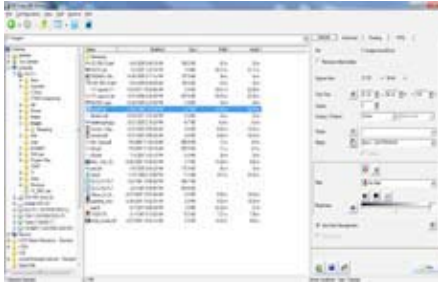
From viewing and printing of documents in a wide range of formats, to professional color management, application drivers, cost controls and integration with 3rd party software, KIP C7800 graphics printing apps streamline production print work, save time and increase productivity.



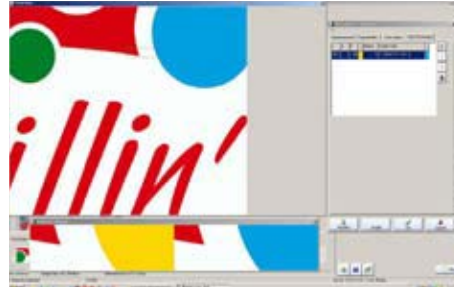
- KIP Color RIP
- Microsoft Certified KIP Windows Driver



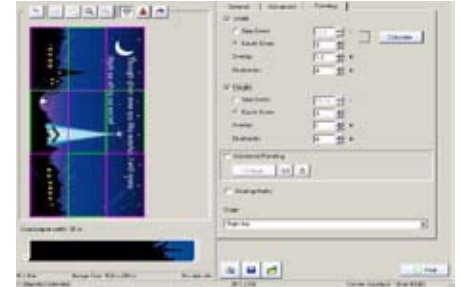
KIP COLOR RIP GALLERY



Explorer Style Interface



Professional Color Management



Easy Print Paneling

KIP RIP - Key Features	B&W	Color
Unlimited Network License	•	•
ICC Profiles & Color Management for CMYK or RGB Data		•
Nesting of Multiple Copies (Step and Repeat)	•	•
Color Exchange for Spot Colors		•
Area of Interest (Zoom to Area and Print)	•	•
Standard and Advanced Paneling Sizes	•	•
KIP Cost Review Application	•	•
KIP Track System	•	•
Easy to Use Image Settings for Line and Graphic Images	•	•
Crop, Despeckle, and Deskew	•	•
Change File Resolution and Scale	•	•
Color Editing tools - Change Color Mode		•
Job Editor - Collation, Scaling, Mono/Color, Target Printer	•	•
Color Image Gamut Warning		•
Save Unlimited Presets/Templates	•	•
View Media & Toner Levels	•	•
Remove White Borders	•	•
Custom Image Labeling	•	•
Add Trim Lines	•	•
Custom Image Alignment	•	•

KIP RIP - Additional Features	B&W	Color
Use Color Management		•
Reload/Reprint Job	•	•
Custom Margins Controls	•	•
Media Setup Features		
Printer Configuration Wizard	•	•
Media Calibration Wizard	•	•
Custom Color Profiles		•
KIP Printer Linearizations	•	•
Spectrophotometer Support		•

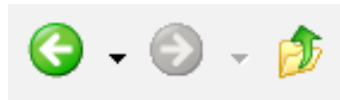
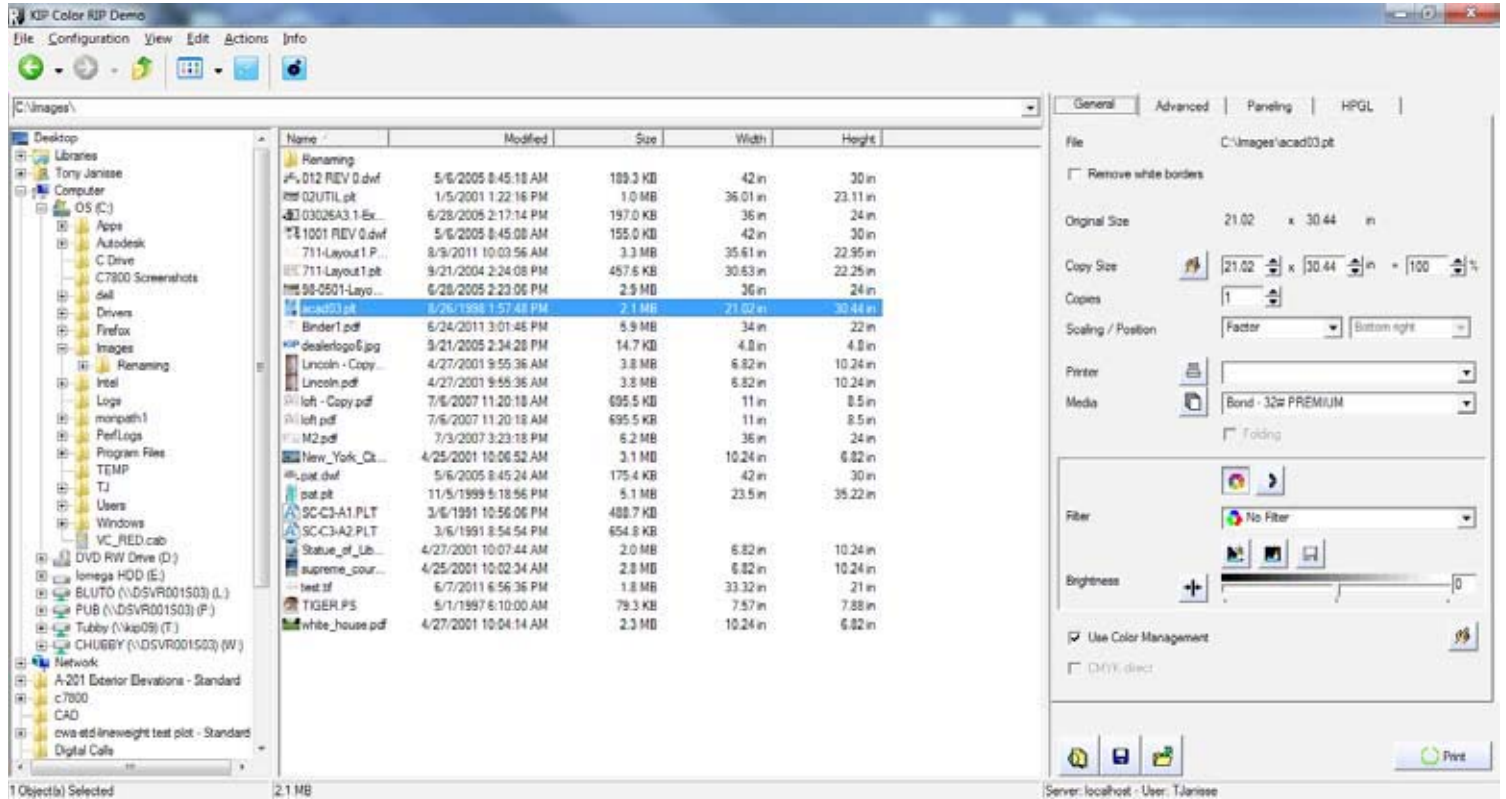
• = New/Enhanced in latest version

KIP RIP - Additional Features	B&W	Color
Filter Editor Features		
Preview Filter Changes On-The-Fly	•	•
Color Adjustment In Lab or CMYK Color Space		•
Saturation / Contrast / Brightness Adjustment		•
Adaptive Black and White Point Settings	•	•
Color Exchange		•
Adaptive Image Sharpening	•	•
Filter Editor with Color Management		•
Filter Editor without Color Management		•
Filter Editor Grayscale/B&W	•	
Grayscale Adjustment	•	
Custom HPGL Pen Tables	•	•
Image Preview Features		
Preflight Functions	•	•
Color Image Gamut Warning		•
Soft Proof for Color Confirmation		•
Hpgl Preview	•	•
Graphics Viewer/Editor		
Image Despeckling	•	
Image Hole Filling	•	
Manual Image Deskew	•	•
Image Cropping	•	•
Color Management Features		
Color Image Rendering Intent		•
CMYK Direct Color Processing		•
Set ICC Profile for CMYK VS RGB File Data		•
Configure Customized Hot Folders (for Drag and Drop)	•	•
Save Unlimited Presets/Templates	•	•
View Media & Toner Levels	•	•
Remove White Borders	•	•
Custom Image Labeling	•	•
Add Trim Lines	•	•
Custom Image Alignment	•	•



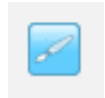
SELECTING FILES FOR PRINTING

A convenient and intuitive explorer style interface provides access to image files. The center portion of the GUI displays the contents of the folder and operators may choose one or multiple files for printing. After selecting a printable file, the tab area at the right becomes available. All the options are important to designate your printing preferences.



VIEW

The view button changes the way files are displayed, providing the choice of Large Icons, Small Icons, List View or Detail View.



VIEWER/EDITOR

The VIEWER/EDITOR is a helpful preflight feature that provides advanced image management tools for cropping and editing images before printing.



JOB EDITOR

The job editor provides the ability to select multiple files for collated sets printing. Print jobs can include single and multipage files.



REMOVE WHITE BORDERS

If the image files contain white borders, simply activate this option to remove them from the print. By removing white borders, more media space is available for printing multiple images on a single sheet.

ORIGINAL SIZE

Displays the size of the original (width and height) image

COPY SIZE

The output size can be increased or reduced by entering a percentage or entering the desired height or width of the print. The size changes proportionally when you alter one of these parameters.

COPIES

Designate number of copies from 1 to 999.

SCALING / POSITION

The image will be increased or decreased based on the size of the selected print media.

MEDIA

A selection of currently available media is displayed to provide fast selection of the paper type you want to use.

PRINT MODE

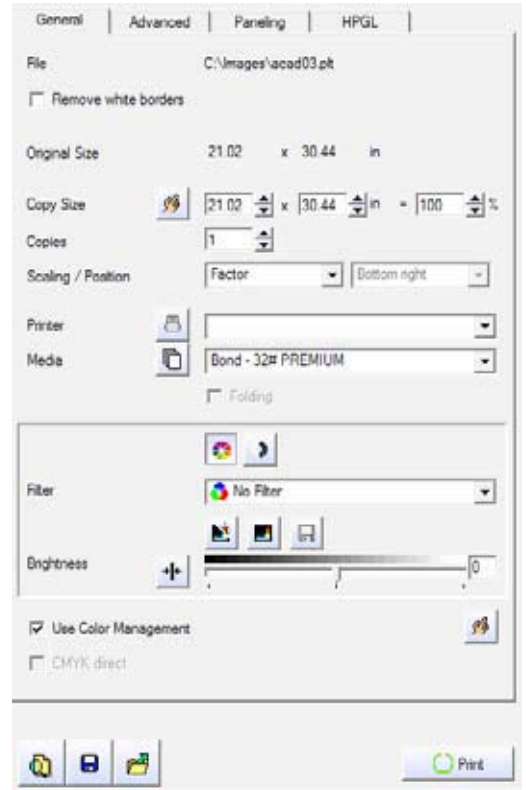
Select the print mode for either dedicated black and white printing using K toner only or full color printing.

FILTER

A drop down menu containing all saved quality filters is available to set printing preferences on a per-file basis.

BRIGHTNESS

The brightness of a copy may be easily adjusted with the brightness slider. When using most normal originals, a setting of 0 (neutral) is recommended. Moving the slider to the left (negative values) will result in a print that is darker than the original and moving the slider to the right (positive values) will make a brighter print.





USE COLOR MANAGEMENT

Turning on the Use Color Management option allows the KIP Color RIP software to manage colors, overriding any embedded color profiles or settings. You may select profiles for RGB and CMYK. If no profiles are embedded in the file, the option from the drop down menu is used. If you prefer a special profile instead of the standard ones you can select ICM file and specify the path in the box below.



PERCEPTUAL - RENDERING INTENT

The exact gamut mapping of the perceptual intent is vendor specific and involves compromises such as trading off preservation of contrast in order to preserve detail throughout the tonal range. It is useful for general reproduction of images, particularly pictorial or photographic-type images.

RELATIVE (COLORIMETRIC INTENT) - RENDERING INTENT

This intent re-scales the in-gamut, tristimulus values such that the white point of the current medium is mapped to the PCS white point (for either input or output). It is useful for colors that have already been mapped to a media with a smaller gamut than the reference medium (and therefore need no further compression).

SATURATION - RENDERING INTENT

This intent sets brighter colors by neglecting the color fidelity.

ABSOLUTE (COLORIMETRIC INTENT) - RENDERING INTENT

For this intent, the tristimulus values of the in-gamut colors are unchanged. It is useful for spot colors and when simulating one medium on another (proofing).

CMYK DIRECT

With Color Management off you can use CMYK direct. For CMYK files the values will be directly given to the printer.

MARGINS

You can set additional white margins, whose size can individually be set for the left, right, top and bottom. Bear in mind that the maximum print width of the initial copy decreases by the size of the margins. If you want a continuous white margin of 1" / 254mm, just activate BORDERS EQUAL and set the left margin to 1 inch. The rest of the margins are adjusted automatically.

MIRRORING

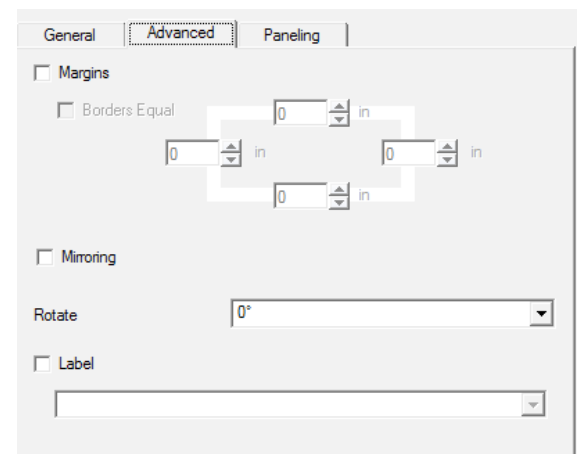
Reverses the print to make a mirror image of the original.

ROTATE

Allows users to manually rotate print images, overriding automatic paper saving features.

LABEL

Additional information can be entered for the label (e.g. customer, employee). The print history can also be used for frequently used label entries.





TAB PANELING

For extra large printing applications such as posters and banners, it is necessary to divide the copy into several different panels. As soon as the required output size exceeds the maximum print width or the maximum print length of a printer, a range of advanced settings become necessary under Paneling.

PANEL SIZE (WIDTH/HEIGHT)

Designate the height and width of each panel for printing.

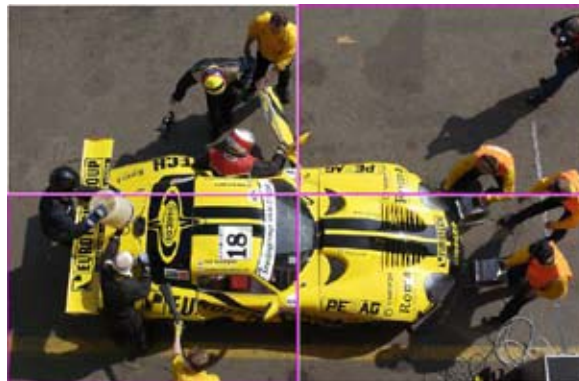
CALCULATE (PANEL SIZES)

Paneling is designed for easy use: KIP Color RIP calculates the number and maximum size of the panels that will fit on the paper width, including the overlap (if selected).



SELECT PANELS FOR THE OUTPUT

If you choose to print an image with panels, their distribution, including the overlap will be displayed in the preview after activating the tab Paneling. The preview of the panels is also possible in combination with the Area of Interest (AOI)



You have the option to print single panels. Each panel is displayed with a magenta-colored border. To activate or deactivate the panels just click on the desired panels.

OVERLAP

Prints can be generated with overlaps for gluing, adding a white area to the sides as designated.

KIP C7800 MICROSOFT CERTIFIED WINDOWS DRIVER



The KIP Windows® driver is Microsoft WHQL certified, meaning the KIP Windows driver meets explicit standards of reliability and quality. The KIP Windows driver enables direct printing from Windows based applications and supports advanced features including set collation, fast spooling for multiple copies or sets, data tracking for job accounting and media selection.

- Windows 7 Device Experience
- Provides current media information
- Displays real time system status
- 64 & 32 bit operating system compatibility
- Job accounting and data tracking information





WINDOWS CERTIFIED APPLICATION DRIVER GALLERY



Simple & Advanced Color Options



Printer Status



Windows 7 Device Experience

Windows Certified Application Driver Key Features	B&W	Color
Driver Information		
KIP GL format (CAD Applications)	•	•
KIP Script format (Graphics Applications)	•	•
Windows 7, Vista ,XP 32 Bit Compatible	•	•
Windows 7, Vista ,XP 64 Bit Compatible	•	•
Windows 7 Device Experience	•	•
Install KIP Software Via Driver	•	•
Media Information		
Paper Size (Standard and Custom Sizes)	•	•
Standard Media Types	•	•
Custom Media Types	•	•
Scaling	•	•
Orientation	•	•
Media Source	•	•
Copies and Output		
Copies	•	•
Orientation	•	•
Scaling (When Not Available In Application)	•	•
Paper Scaling	•	•
Collation/Page order	•	•
Mirroring	•	•

Windows Certified Application Driver Additional Features	B&W	Color
Color Selections		
Simple Color Preset Selection		•
Simple Color Adjustments		•
Advance Color Quality Selection		•
Advance Color Filter Selection		•
Advance Color Black Trapping On/off		•
Advance Color , Color Trapping On/off		•
Special Features		
Apply Stamps	•	•
Set Separator	•	•
Job Separator	•	•
Text Header	•	
Folding	•	•
Printer Feedback		
Media /toner Levels	•	•
KIP Cost Review Application Integration	•	•
KIP Track System	•	•
Meter Reading	•	•
System IP Address	•	•
Driver Version	•	•

• = New/Enhanced in latest version





Tab Name	Features/Functions	
Paper / Scaling	Control paper size, orientation scaling, media source and alignment	
Copies / Output	Number of copies, collation, page order, mirror or invert	
Stamping	Add digital stamps, headers or job / set separators	
Printer Options	Control folding, output format and stacking	
Accounting	Input Username, Job number or Description where required	
Printer Status	View IP address, version number, consumables, meters and install KIP Print	
Management	Allows accounting to be used from Windows applications.	

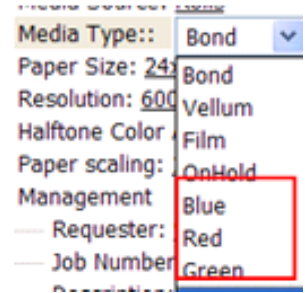
PAPER SIZE

Select the output page size. Please note that the KIP printer may have a roll installed that may be larger than the selection.

This feature is very important in wide format printing from CAD applications and MS Excel. This is a feature that is required in CAD applications where the image size may vary from one image to the next such as: 36" x 60" / 914 x 1,520mm for the first document, then 24" x 80" / 601 x 2,032mm for the next.

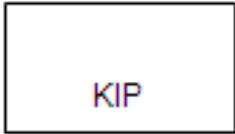
MEDIA TYPE

The KIP printer may have more than one media type installed. These types may include bond, vellum and film. This feature allows printing onto a media type of your choice if the media has been installed. Custom Media will also be read and available if installed in the printer. Custom media types are configurable via KIP PrintNET.



PAPER SCALING

Many Windows applications have their own scaling capabilities built into the "print menu". For example: Adobe Acrobat or Photoshop and MS PowerPoint allow for some form of "Scale to Page" type feature. Some Windows applications such as MS Word and MS Excel do not allow for scaling to engineering and architectural wide format paper sizes. Example:



No scale used

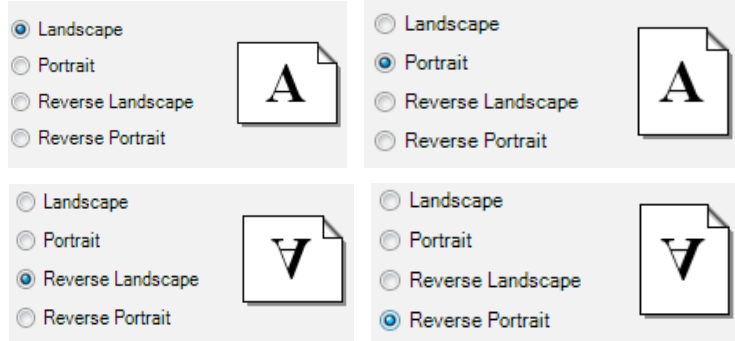


Scale applied to enlarge image



ORIENTATION

There are four types of orientation in the KIP driver: Landscape, Reverse Landscape, Portrait and Reverse Portrait. This ensures that any document may be rotated properly for folding or stacking purposes. Examples:



Selection of the orientation should take into account the design or layout from within the application. If an incorrect orientation is selected the page size can be “rotated” incorrectly and image may be lost in the final printed output.

MEDIA SOURCE

Select output media source from roll media and cut sheet media.

Cut sheet media is available in standard architectural or engineering sizes. Paper may be required to be inserted into the printer prior to printing.

ALIGNMENT

Change alignment (image position) on the printed output from the left, center or right placement.

COPIES

Select the total number of copies you wish to print. The range is from 1 to 999.

COLLATION

If the document to be printed contains more than one page, collation may be important. Collation may be enabled or disabled per user requirements.

Collation ON – Printed output order: 1, 2, 3, ..., 1, 2, 3, ..., 1, 2, 3, etc. for each print set (copies)

Collation OFF – Printed output order: 1, 1, 1, ..., 2, 2, 2, ..., 3, 3, 3,etc. for each print set (copies)

PAGE ORDER

If the document to be printed contains more than one page, collation order may be important. To allow the pages to be reversed printed (last page first), user can select this function. Please note that the application must also support multiple page printing.

MIRRORING

Select Mirror ON to print a mirrored print of the image on the printed page.

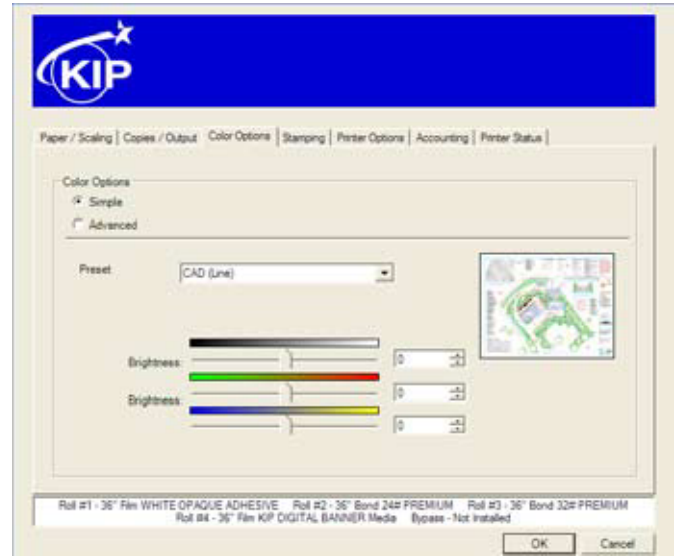


KIP WINDOWS DRIVER

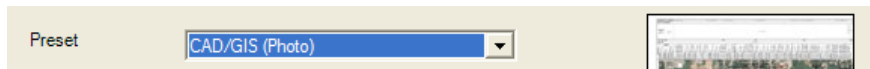
COLOR OPTIONS

There are two modes to choose from when using the KIP Windows driver to print to a KIP Color system Simple and Advanced.

SIMPLE SETTINGS



Preset – Choose from multiple color preset settings. Image will be displayed showing the file type selected.



Brightness – Users have the ability to adjust the brightness with a positive value making the output brighter and a negative value making the output darker.

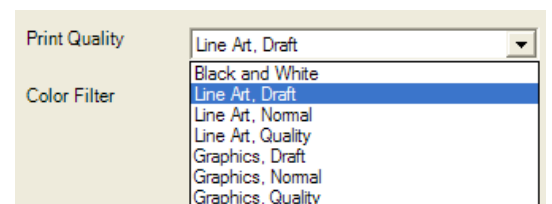


Color Adjustment - allows the user to make adjustments to the Red/Green and Blue/Yellow of the files that are being printed.

ADVANCED SETTINGS

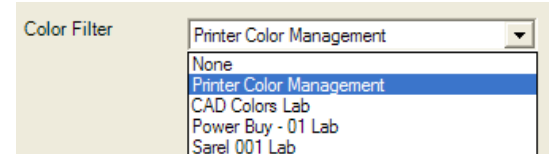


Print Quality – Choose from Multiple print Quality settings





Color Filter – Choose from Multiple Color Filters to apply to the color output.



Choose from Black Trapping On/Off - In general, trapping is the overlapping of colors to prevent mis-registration and the resulting gaps of paper showing through (The image bellow is exaggerated to show the mis-registration).

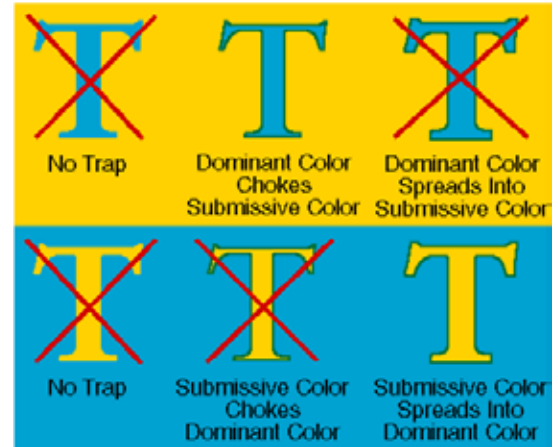
Black Trapping Off



Black Trapping On



Choose from Color Trapping On/Off - when one color totally surrounds another, they must have either a choke or spread relationship. The examples below illustrate applications of choking and spreading. Notice that when a dominant color is surrounded by a submissive color, the dominant color chokes the submissive color (it draws the submissive color underneath its edges). Conversely, when a submissive color is surrounded by a dominant color, it spreads into the dominant color (bottom example, at right).



STAMPS

Apply a digital stamp to the printed output. The KIP Windows driver will load the list of available stamps that are configured using either KIP Print or KIP PrintNET. It is not possible to modify these stamps using the driver. For information on configuring stamps or placing them on the KIP IPS, please see the KIP Print or KIP PrintNET documentation.

JOB / SET SEPARATOR

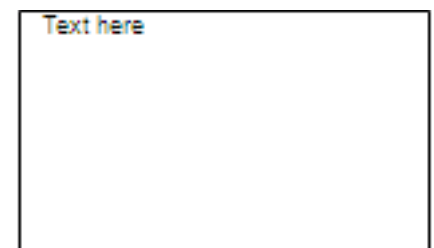
Enable a Job or Set separator to be printed that outlines the name of the printed sheet, number of copies and square footage per sheet and total.

Job Separator prints after the entire job has finished

Set Separator prints after the completion of each set

HEADER – B&W ONLY

A text header can be placed on lead edge or trail edge of the printed document. The text header includes job accounting information such as username and job number information as well as the file name.





FOLDING

If the KIP printing system is configured with an optional folding device, users may select the output folding packet per print job. Folding packets are configured via KIP PrintNET.

OUTPUT FORMAT

Based on requirement, the KIP Windows Driver allows users to select their preferred method of creating hard copy output using 2 different output formats, also known as dual output printer language selection. Using 'Printing Preferences' in the driver, users can select either 'KIPScript' or 'KIPGL'.

KIP SCRIPT OUTPUT FORMAT

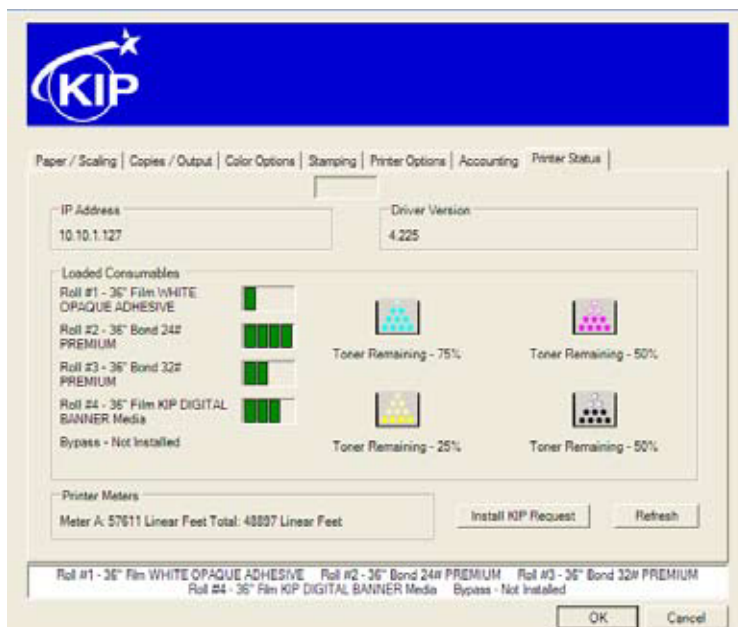
KIPScript (emulates Postscript output) when printing from applications that function best when outputting Postscript data. For example: Adobe Acrobat functions best when using Postscript output. Other graphics applications including Adobe Photoshop, Microsoft PowerPoint and Excel work well with KIPScript output.

KIP GL OUTPUT FORMAT

KIPGL (emulates HP-RTL) when printing from CAD applications that may not have a pre-built compatible driver. The KIPGL output can be further enhanced by making changes to the pen table on the KIP IPS via KIP PrintNET. Features like line width compensation and RTL dither allow users to achieve exceptional quality when using the KIPGL output format.

PRINTER STATUS

Printer Status shows the current status information of the attached printer. View loaded consumables such as paper type, size and amount remaining, toner status (if available), printer meters and driver version. Installation of the PC based job submittal application KIP Print is possible from Printer Status. For more information on KIP Print, please view the KIP Print documentation. At the bottom of each tab is listed the current printer status. Any error conditions will be reported in this area. This information is refreshed each time the printer driver is accessed or if a user clicks on the Refresh button from the Printer Status tab.





KIP WINDOWS 7 DEVICE EXPERIENCE

KIP software utilizes a collection of new Windows 7 features to improve how users of KIP systems can access printer status and submit print jobs utilizing KIP print submission applications.

The KIP Windows 7 Device Experience is automatically installed when a PC is connected to the internet.

Once installed, a user is presented with a KIP system icon depicting their installed KIP system. Double-clicking on the graphic will load the Windows Device Experience.

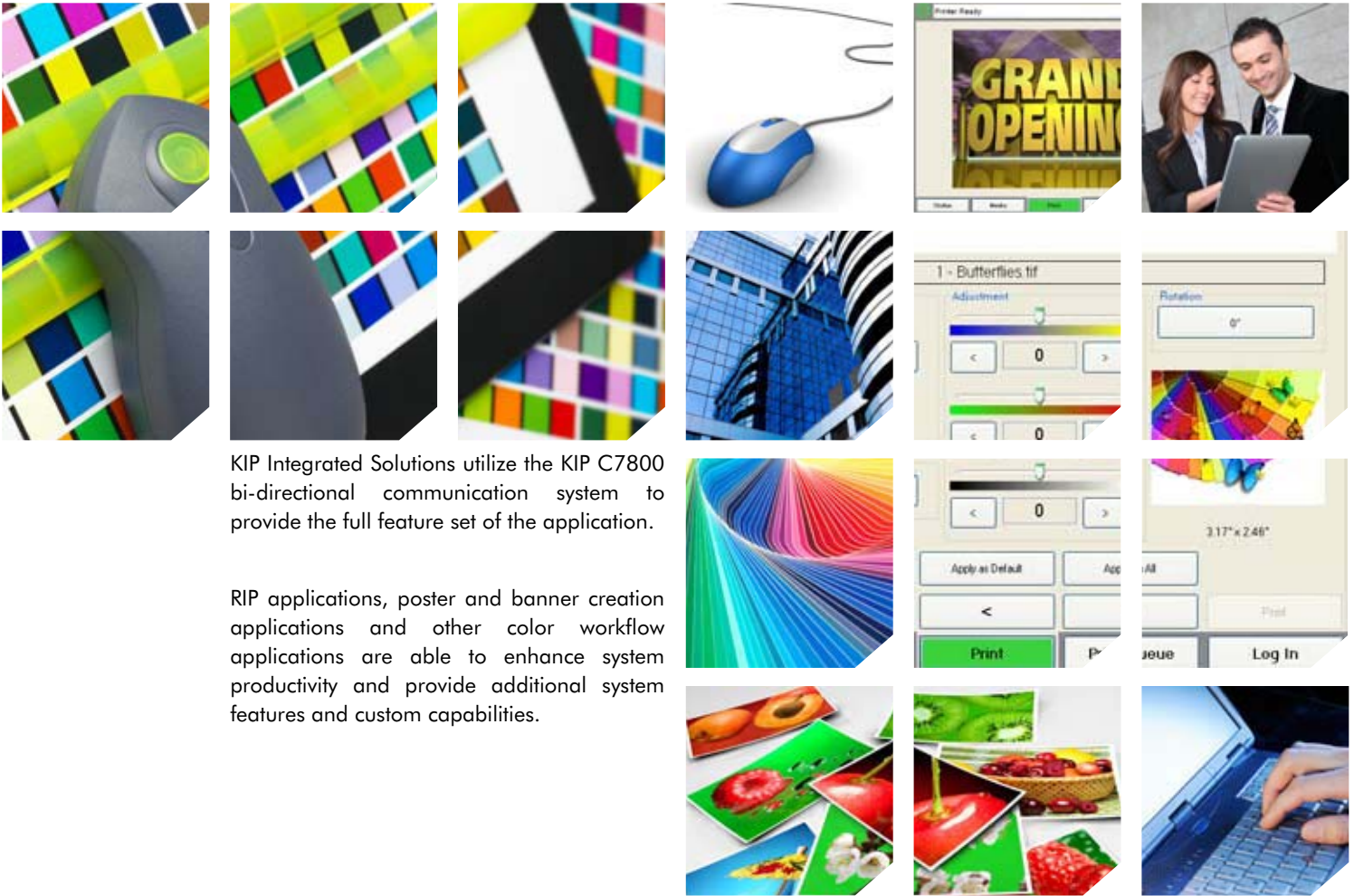
By selecting Windows 7 Devices and Printers KIP users can view and select the KIP systems that are connected their network.



- KIP printer icon makes it easy to identify your installed printer
- Identifies KIP printer status and the number of jobs in the print queue
- Identifies KIP printer settings relating to print size and orientation
- Launch KIP Print to submit print jobs via PC based application
- Launch KIP PrintNET to submit print jobs via web browser application



KIP C7800 INTEGRATED SOLUTIONS



KIP Integrated Solutions utilize the KIP C7800 bi-directional communication system to provide the full feature set of the application.

RIP applications, poster and banner creation applications and other color workflow applications are able to enhance system productivity and provide additional system features and custom capabilities.

- FlexiSIGN
- Shiraz
- Print Shop Mail
- Caldera

INTEGRATED SOLUTION: FlexiSIGN

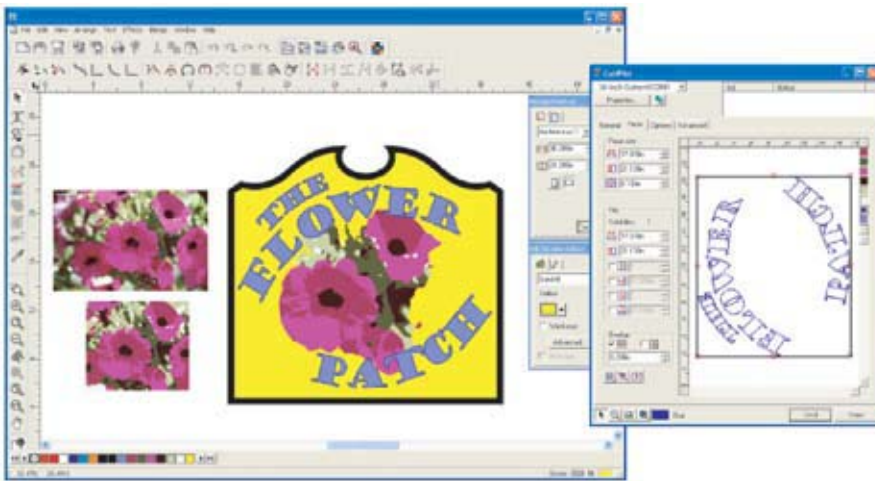
Flexi10



FlexiSIGN sign making package provides exceptional tools to produce high-quality signage without a large initial investment. In addition to design, scanning and tracing capabilities, with complete cutting output, FlexiSIGN also includes Text Styles and Job Statistics for enhanced performance.

INTUITIVE AND POWERFUL

- The user interface has been long renowned for its ease-of-use.
- The industry's most powerful layout and output package for vinyl cutting.
- User interface is built around task workflow and thought process.



IS FlexiSIGN RIGHT FOR YOU?

- The most popular package for design and output of standard vinyl cut graphics.
- Smart Objects and Smart Tools follow your design process and update automatically for maximum productivity.
- Quickly and accurately vectorize grayscale or black and white bitmap artwork with the most powerful vectorization on the market.
- Create custom Gradients quickly and easily with Linear, Comical, Radial, and Square style fills, and edit them on screen.
- Decrease time and increase productivity with the ability to save and apply both graphic styles and text styles.
- "Send To EnRoute" command seamlessly integrates your text and designs into EnRoute for dimensional sign output.

FlexiSIGN FEATURES

- Configure cutter setups for out-of-the-box production with over 700 built-in cutter drivers.
- Workspace control permits users of other software to set the workspace to look and feel like many other popular applications.
- The strongest import filters in the industry give you the flexibility to import from the most popular design applications.

INTEGRATED SOLUTION: SHIRAZ



Shiraz Software is a UK based software development company that has been engineering RIP software for the large format market since 1993, right at the start of the large format printing revolution.

- Shiraz RIP Server - The ultimate in large format printing. Multi platform and client/server architecture aimed at the most demanding production environments. Multiple printers can be driven from one central server for maximum control. Unlimited clients can be used to prepare print jobs using specialized client applications to streamline workflows which are provided as standard. A truly scalable product that will meet all your existing and future requirements for Large Format printing.
- Shiraz Signature - A unique integrated design and production RIP. Featuring a Layout User Interface where you can see what you print, yet keeping the advanced features found in RIP Server. This product is the ideal solution for the Digital Sign-maker investing in their first large format printer. Easy and economical upgrade path to the Shiraz Server ensures future proof investment.
- Shiraz Focus - The low cost solution for the photographic market. Print jobs are created quickly and accurately by simply dragging & dropping Images on to the photo pack templates. A template editor allows you to create your own templates, from contact sheets to multi-panel panoramic. Printing is carried out by the same core technology as in RIP Server ensuring color accuracy and optimal image quality.
- Shiraz Carbon - An extremely easy to setup and use professional printing solution aimed at cooperate and copy shop market. The software includes full Adobe PDF support as well as all common raster files and CAD file types such as HP/GL2. It is very aggressively priced to enable entry for users who would otherwise be using the native printer drivers.

INTEGRATED SOLUTION: PRINT SHOP MAIL



Print Shop Mail from Objectiflune opens new doors for direct marketing using large format posters printed on the KIP C7800. Combined with the print speed of the KIP C7800, large VDP orders can be completed easily and quickly.

Variable Data Printing (VDP) is a subset of print-on-demand in which graphic elements such as text, pictures and graphic images may be changed from one printed piece to the next, without stopping to change the printing process to achieve the desired output results. VDP uses information from an external file or database to create for example, a set of customized point of sale posters, each with the same basic layout, but a different pricing message on each poster.

Variable data printing enables the customizing of documents via digital print technology, as opposed to the 'mass-production' of a single document using screen-print or offset. Instead of producing 200 copies of a single poster, delivering a single message to 200 customers, variable data printing could print 200 unique posters with customized messages for each customer.

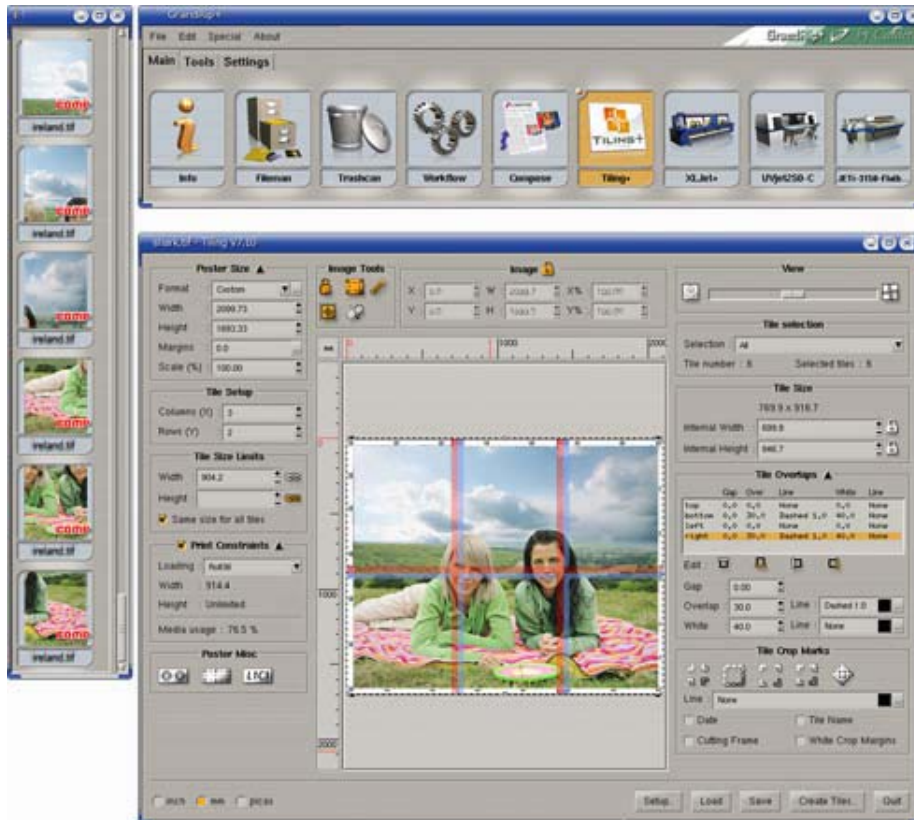


INTEGRATED SOLUTION: CALDERA

The addition of the professional GrandRIP+ from Caldera helps to realize the graphic arts potential of the KIP C7800. Caldera gives users the flexibility to optimize their workflow through the use of their preferred RIP software. The GrandRIP+ software solution from Caldera ensures added value to KIP C7800 users, which rests on the strong core competencies of Caldera: color management, tiling, layout, spooler management & task automation.

The Caldera GrandRIP+ and KIP C7800 combination has proven to be successful in environments searching for a solution which would enable them with one single RIP to manage their production on various types of machines, including solvent and UV technologies, as well as the new KIP C7800.

CALDERA
WIDE FORMAT IMAGING



KIP C7800 MEDIA GUIDE



KIP C7800 MEDIA GUIDE

The KIP C7800 supports a broad selection of media types for specific applications. Compatible media includes standard bond and photo gloss paper; technical and graphic vellums and films; banner material; billboard blueback and self-adhesive substrates.

In addition, the KIP C7800 system handles extended paper weights from 18 to 40lb. bond to further extend printing possibilities.



- KIP C7800 Media Guide
- KIP C7800 Media Applications

KIP C7800 MEDIA GUIDE

BOND PAPER

Bond paper is widely accepted as the standard media for wide format printers. Color prints on bond paper can be visually enhanced by processes such as lamination and AccuShield coating.

- Bond / 20 lb.
- Bond / 24 lb.
- Bond / 32 lb.
- Bond / 40 lb.
- Translucent Bond / 18 lb.
- Indoor / Outdoor Waterproof Bond – Rite in the Rain
- Tints
- Fluorescents

FILM

Double Matte Film is a clear, polyester base wide format print media with a matte surface on both sides. It is an exceptionally strong, durable media that offers the dimensional stability needed for long term use.

- Double Matte / 3 mil for Backlight Displays

BANNER MATERIALS

Banner medias are particularly suitable for applications requiring high opacity for perfect color brilliance. KIP Digital Banner Media is a totally synthetic, white opaque, single layer micro-porous printing material that behaves more like paper than plastic. KIP Blueback media features a blue-backing to ensure no image bleed through when installed over existing prints. Indoor/Outdoor Weather Proof Film provides extreme durability and visual similarity to bright white paper.

- Indoor /Outdoor Weather Proof Film
- Digital Banner Media / 10 mil/4.5oz
- Blueback / 32 lb.
- Soft Polyester

GLOSS

Hi-Gloss media helps to produce vivid, full color wide format prints. Due to the glossy finish, images display an extremely wide color gamut, making this media appropriate for a wide range of commercial and point of purchase applications.


- Hi-Gloss / 32 lb.

ADHESIVE

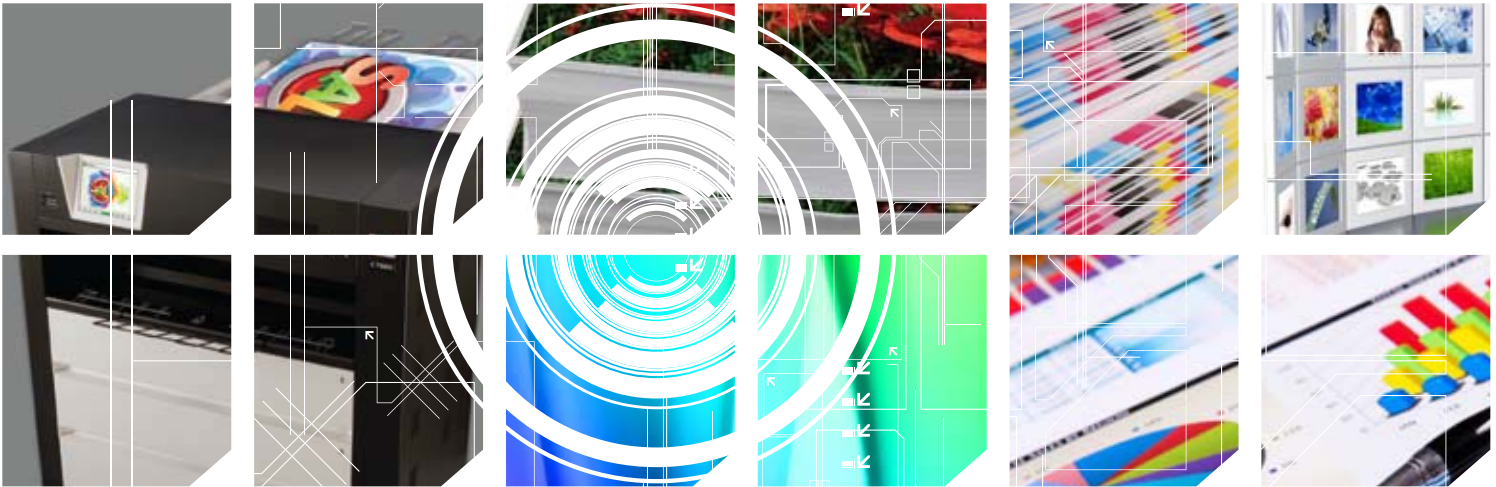
White opacity and clear translucent varieties are suitable for mounting on a range of substrates including painted walls and glass. Due to high mechanical stability and tear-resistance, self-adhesive media provides increased durability.

- Clear Adhesive / 6mil (2mil with a 4 mil carrier)
- Adhesive Bond

KIP C7800 LARGE FORMAT PRINTING MATERIALS

Product Categories	Application Categories								
	Trade Shows & Event Displays	Backlit Displays	POP and Retail Displays	Photo Enlargements	Banners	Geographic Information Systems (GIS)	Architecture(AEC) and Engineering (CAD)	Posters and Presentations	
Bond Paper									
Bond / 20lb			•			•	•	•	
Bond / 24lb			•			•	•	•	
Bond / 32lb			•			•	•	•	
Bond / 40lb	•		•		•	•	•	•	
Translucent Bond / 18lb						•	•		
Indoor/Outdoor Waterproof Bond - Rite in the Rain			•			•	•	•	
Tinted Bond			•			•	•	•	
Recycled Bond			•			•	•	•	
Bright Fluorescent Bond Paper									
Fluorescent Yellow			•					•	
Fluorescent Pink			•					•	
Fluorescent Orange			•					•	
Fluorescent Blue			•					•	
Film									
Double Matte / 3 mil for backlight Displays	•	•	•			•			
Banner Materials									
Indoor/Outdoor Weather Proof Film	•		•		•			•	
Digital Banner Media / 10 mil (4.5 oz)	•		•		•			•	
Blueback	•		•		•				
Soft Polyester	•		•		•				
Gloss									
Gloss Paper	•		•	•		•		•	
Adhesive									
Adhesive Bond	•		•		•			•	
Clear Adhesive	•		•		•			•	

KIP C7800 ECONOMICAL PRODUCTION



KIP C7800 ECONOMICAL PRODUCTION

The KIP C7800 saves serious time and money – making ultra high quality wide format printing more cost effective than ever before.

Printing is faster. Operation is simpler. Finishing is automatic. Reliability keeps you up and running. Image quality will keep your customers coming back for more.



- KIP C7800 CMYK Toner
- KIP C7800 Maintenance Program
- KIP C7800 Software Support
- KIP C7800 Toner Cost per Sq. Ft. (MSRP) Based on CMYK % Toner Coverage
- KIP C7800 Graphic Cost of Operation Including CMYK Toner & Full Service Maintenance
- KIP C7800 Cost Review Application

B&W TECHNICAL PRINTING

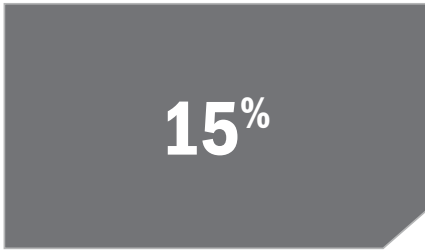
KIP C7800 TONER COST PER SQ. FT. (MSRP)
BASED ON BLACK % TONER COVERAGE



0.64¢



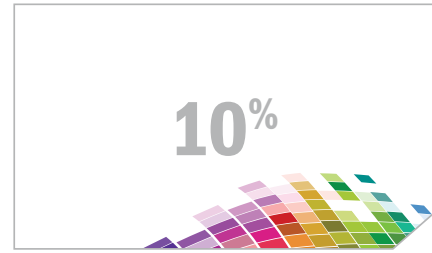
1.14¢



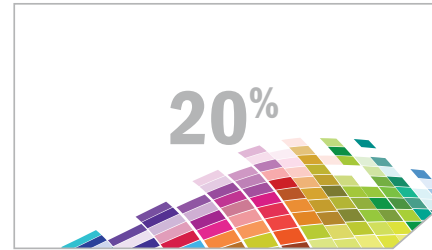
1.66¢

COLOR TECHNICAL PRINTING

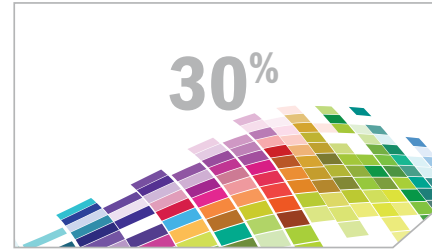
KIP C7800 TONER COST PER SQ. FT. (MSRP)
BASED ON CMYK % TONER COVERAGE



1.73¢

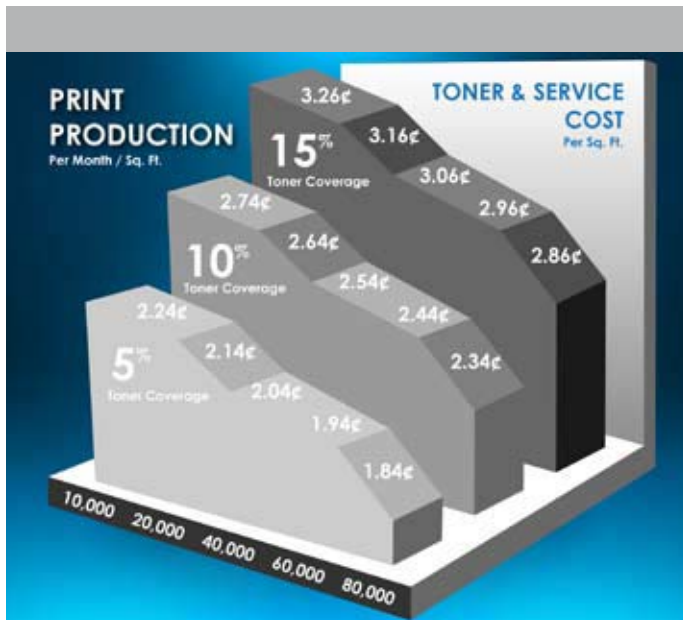


2.88¢

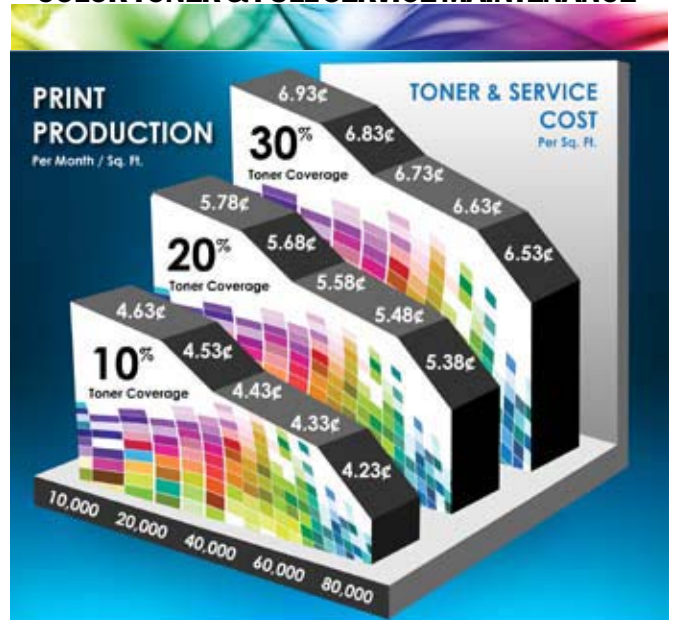


4.03¢

KIP C7800 COST OF OPERATION EXAMPLE:
BLACK TONER & FULL SERVICE MAINTENANCE

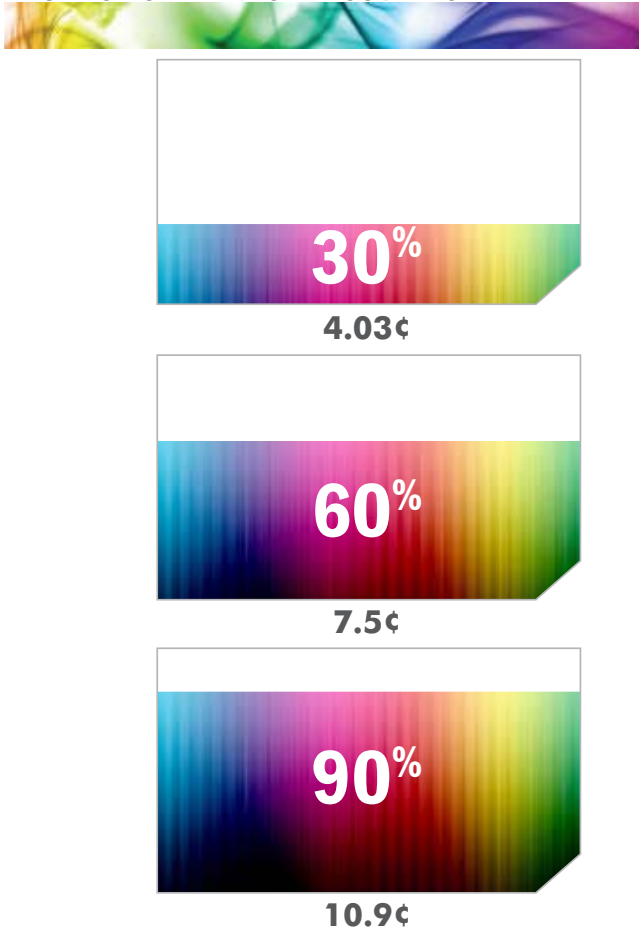


KIP C7800 COST OF OPERATION EXAMPLE:
COLOR TONER & FULL SERVICE MAINTENANCE

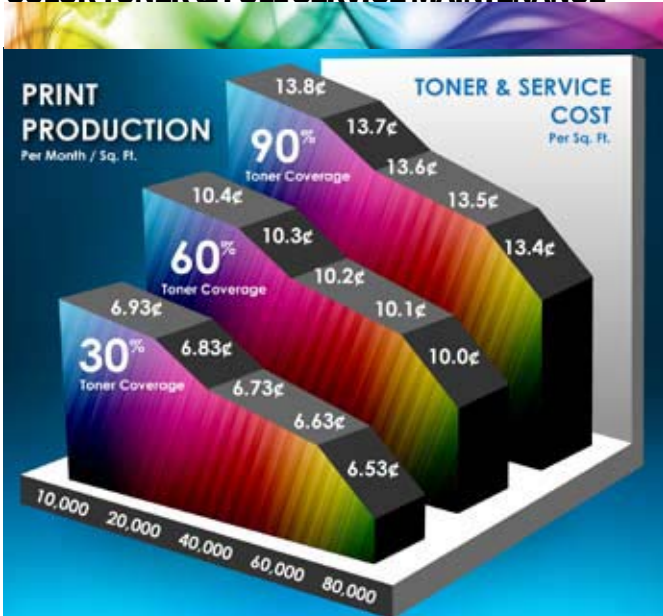


COLOR GRAPHICS PRINTING

KIP C7800 TONER COST PER SQ. FT. (MSRP) BASED ON CMYK % TONER COVERAGE



KIP C7800 COST OF OPERATION EXAMPLE: COLOR TONER & FULL SERVICE MAINTENANCE



KIP C7800 CMYK TONER

- Each CMYK cartridge contains 1000gms of toner for a total capacity of 4000gms – allowing continuous system productivity.
- Prints generated by the KIP C7800 system are lightfast, meaning that they will not fade from exposure to light over extended periods.
- KIP genuine toner uses uniform particles to reproduce ultra-fine image detail. The KIP C7800's 600 x 2,400 dpi print resolution achieves sharper lines, smoother graphics, and greater legibility.

Toner	Quantity	MSRP
Cyan	2 x 1,000 gms cartridges	\$310
Magenta	2 x 1,000 gms cartridges	\$310
Yellow	2 x 1,000 gms cartridges	\$310
Black	2 x 1,000 gms cartridges	\$265

KIP C7800 MAINTENANCE PROGRAM

- The KIP C7800 Full Service Maintenance Agreement provides service support that includes parts and labor by factory trained technicians.
- The C7800 maintenance program is based on a charge for actual monthly usage of the combined color and b&w meter counts.
- There are no monthly print production commitments related to the full service maintenance program.

Monthly Meter Count in Square Feet	Maintenance Fee per Square Feet	
	Color	B&W
0 - 19,999	2.9¢	1.6¢
20,000 - 39,999	2.8¢	1.5¢
40,000 - 59,999	2.7¢	1.4¢
60,000 - 79,999	2.6¢	1.3¢
80,000 +	2.5¢	1.2¢

KIP C7800 SOFTWARE SUPPORT

Telephone Support	Software Upgrades	Rate
•	•	\$70.00 Per Month

KIP C7800 COST REVIEW APPLICATION



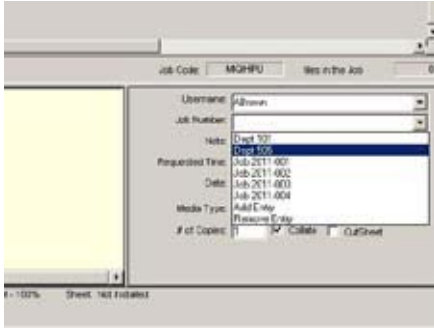
The KIP Cost Review Application accurately accounts for use of any number of KIP systems by user, department, project or client and generates customized reports to that can be delivered via email or printed on demand

Activating the KIP Track system provides reports on all Print, Copy & Scan use by username and selected job number and is fully integrated with all KIP Apps.

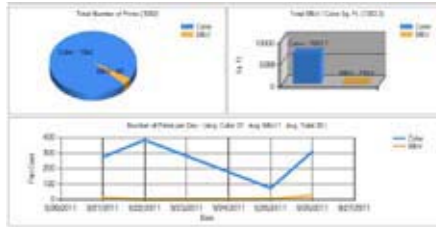




KIP COST REVIEW & KIP TRACK GALLERY



Integrated with all KIP Apps



Easy to Understand Reports

Job/Print	User	Category	Color/Type	Amount	Time
000001-000001	000001	000001	000001	000001	000001
000001-000002	000002	000002	000002	000002	000002
000001-000003	000003	000003	000003	000003	000003
000001-000004	000004	000004	000004	000004	000004
000001-000005	000005	000005	000005	000005	000005
000001-000006	000006	000006	000006	000006	000006
000001-000007	000007	000007	000007	000007	000007
000001-000008	000008	000008	000008	000008	000008
000001-000009	000009	000009	000009	000009	000009
000001-000010	000010	000010	000010	000010	000010

KIP Track Print, Copy & Scan Controls

KIP Cost Review Application	B&W	Color
Information Entry		
KIP Toner Costs	•	•
KIP Maintenance Costs	•	•
Report Categories		
System Use Tracked in 10 Customizable Categories	•	•
Color Usage Tracked in 10 Categories	•	•
Reports Available in Data & Graph format	•	•
Print Reports on Demand	•	•
Recieve Reports via Email	•	•
Reports By Selected Date Range		
Print Volume - Total # of Prints	•	•
Print Volume - Total Sq. Ft.	•	•
Toner Costs	•	•
Maintenance Costs	•	•
Total Cost of Operation	•	•
Estimated Toner Cartiges Used (CMYK)	•	•
Average Toner Coverage % by Color	•	•
Average Toner Coverage % by KIP Printer	•	•
Graphic Reports		
Daily Print Volume	•	•
Total Coverage by Selected % Range	•	•
Average % Coverage Report	•	•
Toner & Service Fees Generated	•	•
Total # of Prints by Media Type	•	•
Total Sq. Ft. by Media Type	•	•
Job History		
Last 100 Jobs Information	•	•
Print Volume - Total # of Prints	•	•
Print Volume - Total Sq. Ft.	•	•
Maintenance Costs	•	•
Toner Costs by Color	•	•

• = New/Enhanced in latest version

KIP TRACK SYSTEM

When activated, the KIP Track system requires individuals to provide username & password information before operating a KIP system. Activity reports can then be generated related to individual users or projects. KIP Track print controls are integrated with the KIP Cost Review Application and included in all KIP print production software applications.

Integrated KIP Software Apps
KIP Touchscreen Copy, File-to-Print, and Scan-to-File
KIP Print (PC)
KIP PrintNET (Browser)
KIP AutoCAD Driver
KIP Windows Driver
KIP Color Pro (Color/Mono Copy and Scan-to-File for PC)

KIP Track Reports
Customizable Reports by User
Customizable Reports by Project or Department
Sq. Ft. Print Production Report
Toner and Maintenance Cost Report
Search Funtion Related to Users and Project or Department
Customizable Fields for Information Tracking
Information Can Be Entered Manually or Via Drop-Down Menu
Password Protect Any or All Data Entries
Pre Scheduled Email Reports Are Generated Weekly or Monthly
On-Demand Reports Can Be Generated via KIP Print
KIP Systems Automatically Send Tracking Data at Prescheduled Intervals





PRINT PRODUCTION SUMMARY

The print production summary report contains information regarding the overall printing and toner usage of the specified report. This report information is based on the Date Range provided on the Report Parameters menu. The Total Counters at the bottom of the report cover all printing for the life of the printer.

- Total Page Count: Monochrome vs. Color
- Total Printed: Monochrome vs. Color
- Total Toner Cartridges: Cyan, Magenta, Yellow, and Black
- Average Coverage
- Toner and Service Fees Generated
- Total Printed: Monochrome vs. Color

COVERAGE REPORT

Contains a summary of all printing operations separated into Coverage Categories with up to 10 custom categories. Reports can be printed or emailed.

MEDIA REPORT

Page Count and Total Amount Printed categorized by Media Type



USER REPORT & JOBS HISTORY

The activity for each User and each Job Name displays Page Count, Square Feet and Fees for color printing.

RECENT JOB REPORT

The details for the most recent 20 jobs are displayed.

- User and Job Name
- Individual Filename also shows individual Cyan, Magenta, Yellow, and Black toner usage and total printed along with the associated Toner.

USER REPORT & JOBS HISTORY

The activity for each User and each Job Name displays Page Count, Square Feet and Fees for color printing.

PRICING INFORMATION

Pricing Entry is completed at the c7800 and includes:

- Cost of Monochrome Case of Toner
- Cost of Color Case of Toner (all C, M, and Y Toner are the same)
- Service Fees per Unit (Square or Linear Feet/Meters) for Color

KIP C7800 PRODUCTION REPORTS

The Production Report provides further details from the Summary Report. Based on the individual percent of coverage, the Coverage Breakdown section indicates the number of prints and the square unit for those prints. The Coverage column is broken down in 1 percent increments, but will not list the increments of which no prints were made.

- Media Usage
- Usage by individual user
- Usage by job number
- Recent jobs usage



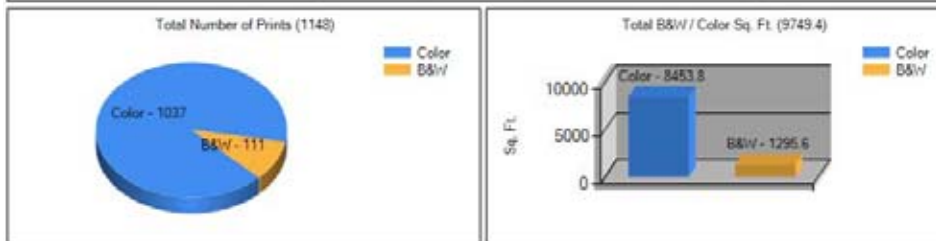
TONER COVERAGE SUMMARY WITH GRAPHIC CHARTS

The KIP C7800 Toner Coverage Summary report contains information regarding overall printing and toner use. This report information is based on the Date Range provided on the Report Parameters menu. The Total Counters at the bottom of the report cover all printing for the life of the printer. The buttons on the right side allow for viewing charts that provide graphical information in the form of a Pie Chart for the Total Number of prints, a Bar Chart for the Total Square Units, and Line Graph that shows the printing over the range of the dates provided.

KIP C7800

Model No: c7800	Date Generated: 11/28/2011 2:56:15 PM	Start Date: 11/1/2011 12:00:00 AM	Costs: Black Toner Cartridge 265 Color Toner Cartridge 310 B/W Service 0.05 Color Service 0.08
IP Address: 10.10.1.145	From Workstation: KIP\pobuin D0IG888P65	End Date: 11/28/2011 2:47:56 PM	Cost Review App OVERRIDE

Total Number of Prints:	B/W	Color	Total	
	111	1037	1148	
Total Printed Units Sq. Ft.	B/W Sq. Ft.	Color Sq. Ft.	Total Sq. Ft.	
	1295.6	8453.8	9749.4	
Toner Cartridges Consumed (Estimated)	Yellow	Cyan	Magenta	Black
	0.8	0.4	0.4	0.4
Average Coverage %:	B/W	Color		
	15.6%	38.8%		
Toner and Service Fees	Toner	Service	Total	
B/W	\$20.59	\$64.78	\$85.37	
Color	\$404.63	\$676.29	\$1080.92	
Total	\$425.22	\$741.07		
Counter A	A Units	Counter B	B Units	
4725	Linear Feet	477	Linear Feet	



- **Total Number of Prints** – a page count of the Monochrome and Color prints.
- **Total Printed Units** – accumulated totals in Linear or Square units (Meters or Feet) of prints.
- **Toner Cartridges Consumed** – Approximated number of Toner Cartridges used during the reported Date Range. This is calculated based on the grams of toner used as calculated from the imported billing data.
- **Average Coverage** – The reported coverage of individual printing totals is averaged across the Total Number of Prints.
- **Toner and Service Fees** – Based on the entry data from the Pricing menu, the Total Printed Units are multiplied by Toner and Service fees.
- **Total Counters** – The Total Counters display the overall printing since the machine was installed.

KIP C7800 COLOR SCANNING & COPYING SYSTEM



INCREDIBLE VERSATILITY MAXIMUM PRODUCTIVITY OUTSTANDING IMAGE QUALITY

The KIP 2300 production scan system is a high resolution, high speed solution that provides world-class color scan quality embodied in an exceptionally versatile and ergonomic design, ideal for both centralized and decentralized environments.

The KIP 2300 scanner combined with powerful KIP Color Pro software delivers advanced copying and scanning features and also includes the ability to RIP files to print. Users may copy and print in b&w or color to multiple printers, ensuring speed, flexibility and accurate production of high-quality color copies.

- KIP 2300 Scanner
- KIP Color Pro Software
- KIP CPS Center

KIP 2300 SCANNER

The KIP 2300 high productivity scanner sets a uniquely high standard for speed; quality and flexibility in a digital image capture system. The KIP 2300 is a high speed scan solution that provides world-class workflow flexibility. Best in class productivity is achieved by a combination of advanced camera based image capture and New KIP Tru • Speed Technology for high speed data throughput with no pauses or delays.

Outstanding image quality is delivered through the innovative use of bright white LED light sources for illumination and 600 x 600 dpi image capture resolution. The KIP 2300 monochrome & color scanner provides high demand users with the highest standards of image quality, versatility and productivity. The KIP 2300 scanners unique product design allows users to capture, archive, print and share monochrome and full color images at high speeds with either face up or face down document feeding for maximum productivity.

ADVANCED TECHNOLOGIES

- Direct connection support for KIP printers and inkjets
- Preset scanning modes – standard or production
- Distinctive white LED original illumination system
- Advanced KIP technologies deliver superior results
- High speed throughput with KIP Tru • Speed technology
- Mono scan speeds up to 12" / 305mm per second!
- Color scan speeds up to 6" / 155mm per second!



WORLD-CLASS IMAGE QUALITY

KIP 2300 imaging technologies create crisp black and white prints, copies and scans of technical drawings, photographs, maps and renderings. An advanced grayscale mode is ideal for accurate photo reproductions.

The KIP 2300 Scanner provides high demand users with outstanding color fidelity without sacrificing speed or resolution! Compatible with KIP and color inkjet printers, the KIP 2300 provides scan to file and copy image quality that is far beyond the capability of any competitors.

FACE UP / FACE DOWN FLEXIBILITY

The KIP 2300 Color Scanner is designed with dual integrated document feed sections to satisfy both face up and face down scanning workflow preferences. The upper scan unit accepts face up documents for high speed scanning and delivers them back to the operator. The lower scan unit provides operators with the ability to stream feed originals for stream scanning jobs and to effectively scan thick originals, such as originals mounted on Sintra, foam core and other substrates

BOARD SCANNING

The KIP 2300 provides the ultimate ease of use functionality for scanning rigid and thick documents. By placing the KIP 2300 scanner in "Automatic Board Mode", documents up to .6" / 15mm thick may be easily scanned to file or copied.



KIP COLOR PRO

KIP Color Pro software provides all the features of KIP Color Advanced, plus file to print, professional ICC color management, image editing capabilities, paneling of images for outdoor graphics, nesting of images for optimum media usage and much more.

- Supports a full range of color file formats
- Professional output options
- Integrates with single or multiple printers
- Accurate color from closed-loop calibration
- Professional grade image enhancement options
- Scan to email, usb drives, mailboxes or network





KIP COLOR PRO GALLERY



Copy, Print & Scan

Professional Image Editor

Copy & Print Paneling

KIP Color Pro Features	B&W	Color
Copy Features		
Single and Collated Sets Copying	•	•
Mixed Mono and Color Copying	•	•
Scale by Factor, Page Size, Auto	•	•
Image Preview	•	•
Auto Image Deskew	•	•
Area of Interest Reduce/Enlarge	•	•
Auto Start for Fast Document Feeding	•	•
Copy to all KIP Printers	•	•
Concurrent Copy and Print	•	•
Scan to File & Copy in Parallel	•	•
Professional Grade Copy Filter Editor and Preview	•	•
KIP Cost Review Application Integration	•	•
KIP Track System	•	•
Scan Features		
Auto Detect Original Size	•	•
Scan Area of Interest / Scan to Specific Size	•	•
Wide Variety of Formats	•	•
Scan to Email (Full Image or Area of Interest)	•	•
Mono / Grayscale / Color Scanning	•	•
Scan to Multipage PDF and TIF	•	•
Scan Image Compression (Variable)	•	•
Graphics Viewer/Editor for Despeckle/Deskew	•	•
Auto Increment of File Name	•	•
File to Print Features		
Print Single or Multiple Files to KIP or Inkjets	•	•
Paneling	•	•
Spot Color Exchange	•	•
Nesting (Step and Repeat)	•	•
On Screen Softproof Capability	•	•
Copy Features		
Color Adjustment		•
Paneling	•	•
Roll Preview	•	•
Gamut Warning and On Screen Softproof	•	•

KIP Color Pro Features	B&W	Color
Copy Features		
Multicopy Nesting	•	•
Set Black and White Point at Start of Set	•	•
Media Calibration Wizard	•	•
Job Editor to Mix Copy, Scan and File Images	•	•
Reprint	•	•
Nesting (Step and Repeat)	•	•
Printer/Scanner Closed Loop Calibration	•	•
Unlimited Presets/Templates	•	•
Professional Copy Filter Editor		
Adjust Scan/Copy Resolution	•	•
Adaptive Black Point by Auto or User Selection	•	•
Adaptive White Point by Auto or User Selection	•	•
Black Enhancement	•	•
Background Removal	•	•
Included Printer Drivers for 1 KIP, 2 Inkjets	•	•
Additional KIP and Inkjet Drivers	Optional	Optional
Scan Features		
Scan to File	•	•
Scan to File - File Formats	All Types	All Types
Color Adjustment		•
Grayscale Adjustment	•	•
Background Processing	•	•
Import Color Profiles		•
Scan at Faster Speeds at Lower DPI	•	•
Control Scanner Speed Independent of DPI	•	•
Supports PDF Security Protocols	•	•
Unlimited Presets/Templates	•	•
Professional Scan Filter Editor and Preview	•	•
Adjust Scan/Copy Resolution	•	•
Adaptive Black Point by Auto or User Selection	•	•
Adaptive White Point by Auto or User Selection	•	•
Scan B&W Images Using Color Data	•	•
TWAIN Support	•	•
Graphics Editor and Preview	•	•

• = New/Enhanced in latest version



KIP COLOR PRO SCANNING

- Integrated with KIP 2300 and KIP 600A color scanners
- Supports a full range of color file formats
- Advanced image enhancement options
- Scan to Email, USB drives, mailboxes or network

KIP COLOR PRO COPYING

- Range of quality presets for different types of originals
- Copy to one or several printers via network connection
- Features nesting, paneling, collated sets printing & cropping
- Advanced copy quality controls

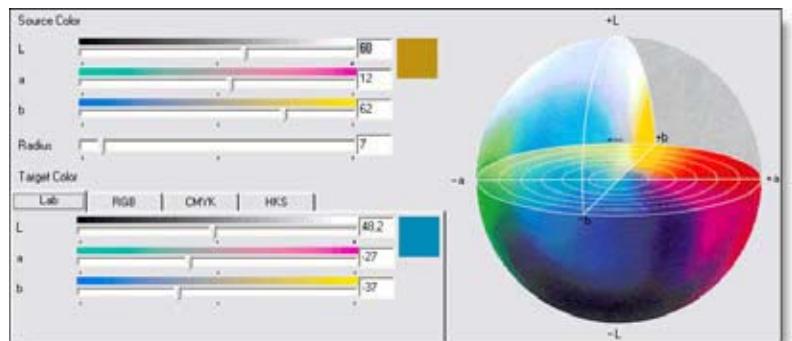


FULL-FEATURED SCANNING AND ARCHIVING

KIP Color Pro software also includes a productive, flexible scan-to-file solution that allows you to scan color and black-and-white documents to secure digital files. KIP Color Pro software supports a wide range of single and multi-page file formats in both monochrome and color for maximum versatility.

TOTAL COLOR CONTROL

With KIP Color Pro software you have maximum control of the copying and scanning process. As well as setting a desired number of copies, rotation and scaling, it includes more advanced functions like nesting, tiling, and set copying. Color Pro even provides the ability to adjust individual colors to your specific needs, creating customized image presets. Of course, operators always have the choice to make automatic “green button” copies for results that are right every time.



MULTIPLE WIDE FORMAT PRINTER SUPPORT

KIP Color Pro software supports all KIP IPS systems and virtually all inkjet printers. You can connect multiple KIP printers, enabling multiple configuration possibilities to create an optimized workflow solution. This approach conserves floor space and resources while providing the flexibility for future system upgrades.

SUPERIOR WORKFLOW

To streamline your workflow, KIP Color Pro software allows you to create presets for frequently used copying and scanning tasks. System access is controlled by designating specific rights and default features to individual system users. Full featured automated metering and accounting is included to track usage of the system and ensure that costs are allocated to the appropriate users and projects.

KIP CPS CENTER



KIP CPS Center software is an easy to use suite of applications suitable for both simple and advanced copy, print and scan functions. This software suite is designed to streamline all imaging functions in high demand environments by providing easy access to all monochrome and color features while minimizing operator effort related to tasks such as image naming and digital file management.

KIP CPS Center applications are designed to operate on a dedicated PC workstation to provide complete control of all copying and scanning tasks. In addition, the KIP CPS Center applications give users the ability to manage the print queue, monitor system status and perform monochrome printing operations.

GRAPHICS SOLUTION

- Range of quality presets for different types of originals
- Ability to fine-tune copy colors
- Maximum freedom: tiling, cropping, and nesting

TECHNICAL SOLUTION

- Predefined copy modes for engineering drawings
- Scan to Email with support for most file formats
- Set copying, even using multiple printers





ORIGINAL TYPE

Allows operator to make various selections according to what type of file is being copied. Line mode for an all line work file, Grayscale mode for a file with lots of grayscale, Line/Photo mode for a combination of lines and photos and Photo mode for an all photo type of file.

QUALITY SETTINGS

Can be used in either Auto mode (the default) or by turning off Auto mode and making manual adjustments to the settings.

COPY COUNT

Allows for the setting of the desired amount of copies to be made. There are three modes available to choose from:

1. Copy – the default setting for making copies to the KIP C7800
2. Set Copy – for building a set of files to be copied
3. Set Copy Concurrent Print – for building a set of files to be copied while getting one hard copy out as a check set.

WIDTH

When set to Auto (default setting) will automatically choose the closest roll available that fits the file being copied. With Auto mode off this allows for the selection of a specific roll by the user.

LENGTH

When set to Auto (default setting) will automatically determine the length of the file and cut the roll at that length. If standard Cut is chosen the user can set up a specific length for the paper to be cut.

FILE NAMING

When scanning to file users have the ability to choose the saved file name by entering the desired name into the Naming Convention Field. When entering a specific name followed by the # sign this will set the scan number to the specified number of digits (ex. Test### will give Test001). The Starting number for the sequence of files to be scanned can also be entered.

SCAN LOCATION

Operators have the ability to select the scan to location from any available location be it on the Scan-to-file pc itself or an available Network location.

KIP C7800 FOLDING

The KIP C7800 integrated folding and finishing system automates wide-format document finishing by providing folding, stacking and collation in a compact design. The online folder is fully integrated with the KIP C7800 print system and KIP C7800 software applications, including certified print drivers to provide a total print management solution.

- Precise document folding
- Operates at maximum print production speed
- Ultra quiet operation
- Online and offline folding capability
- Fully integrated with KIP software
- Color touchscreen controls
- Compact system footprint

HIGH SPEED, VERSATILE FOLDING

KIP C7800 print production is folded and stacked at maximum speed, allowing for easy document filing and distribution. A reliable and durable fold roller system ensures maximum packet accuracy. Flat output stacking is included as a standard feature. Users may conveniently select fold style preferences at their workstation before printing. KIP C7800 folding system features the flexibility to fold documents with precision, regardless of print orientation. Prints are accepted in either landscape or portrait format, allowing for fast and efficient folding operation.



POWERFUL SOFTWARE INTEGRATION

KIP C7800 print submission software and application drivers provide a variety of advanced folding options. Network and browser based applications give users control over all fold patterns, as well as the ability to create, control and retain folding presets.

KIP C7800 FOLDING SYSTEM FEATURES

Feature	Standard	Optional
Offline manual folding	✓	
Fan fold 7"/180mm to 12"/300mm adjustable panels up to 19.6 ft./6m length	✓	
Integrated flat stacking on bridge with 100 print capacity	✓	
Integrated packet stacking with 100 print capacity	✓	
Portrait and landscape print direction & packet styles where applicable	✓	
Adjustable book and staple fold margin 0"/0mm to 2"/50mm	✓	
Z fold packet style	✓	
Metric fold styles for 'A3' to 'A0' print sizes to 'A4' size packets	✓	
C fold packet style		✓
Unlimited length fan folding		✓

NORTH AMERICAN FOLD PACKET STYLES

Print Size		Standard	Packet Fold		Book Fold		Staple Fold		Mailer Fold
			8.5" x 11"	9" x 12"	8.5" x 11"	9" x 12"	8.5" x 11"	9" x 12"	7.5" x 10"
B	17" x 11"	ANSI	✓	✓	✓	✓	✓		✓
	18" x 12"	ARCH	✓	✓	✓	✓	✓	✓	✓
C	22" x 17"	ANSI	✓	✓	✓	✓	✓		✓
	24" x 18"	ARCH	✓	✓	✓	✓	✓	✓	✓
D	34" x 22"	ANSI	✓	✓	✓	✓	✓		✓
	36" x 24"	ARCH	✓	✓	✓	✓	✓	✓	✓
E	34" x 44"		✓	✓	✓	✓	8" x 12"		✓
	30" x 42"	ANSI	✓	✓	✓	✓	✓	✓	✓
	36" x 48"	ARCH ARCH	✓	✓	✓	✓	✓	✓	✓

DIN FOLD PACKET STYLES

Print Size		190mm x 297mm 20mm Margin Binder	190mm x 297mm	198mm x 297mm Tab	210mm x 297mm
A3	297mm x 420mm	✓	✓	✓	✓
A2	420mm x 594mm	✓	✓	✓	✓
A1	594mm x 841mm	✓	✓	✓	✓
A0	841mm x 1,189mm	✓	✓	✓	✓

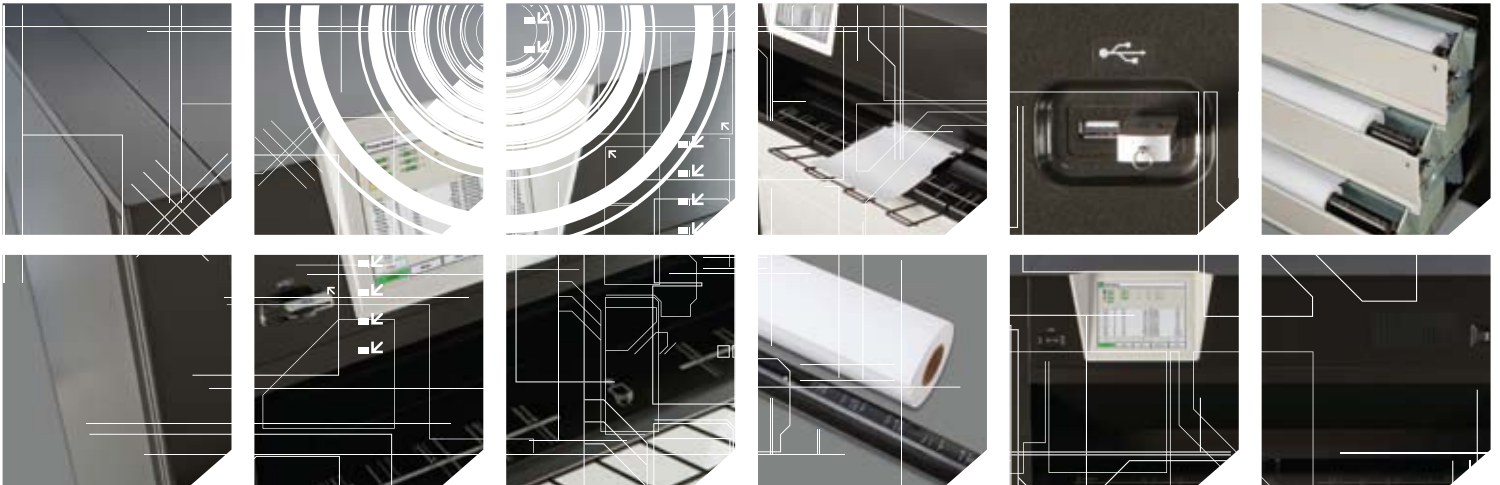
KIP C7800 ONLINE STACKING SYSTEM

The KIP C7800 online stacking system improves the efficiency and productivity of your print production environment by providing easy handling of prints and improves online operation from multiple user workstations by providing a convenient place to stack multiple prints. Unattended print runs can be scheduled with total peace of mind due to the bi-directional communication with the KIP C7800 print system.

The KIP C7800 online stacking system employs a powered roller system for accurate collection of prints. Intelligent, bi-directional communication maximizes system uptime by sharing status information between the KIP C7800 system and the stacking system to maintain peak production.



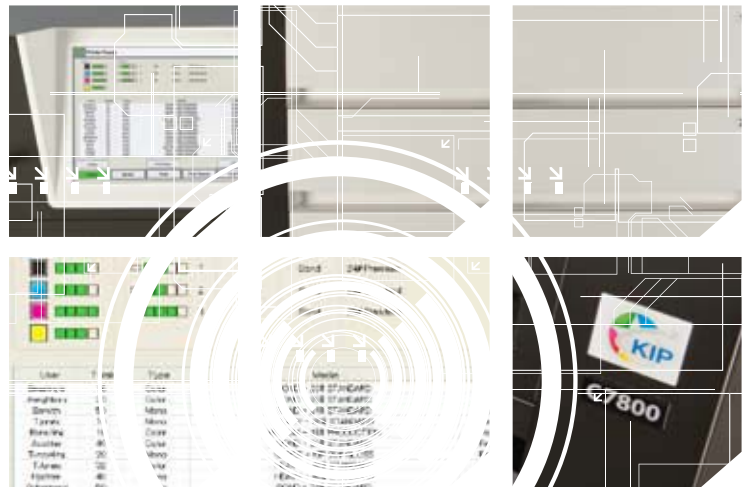
KIP C7800 SPECIFICATIONS



KIP C7800 SPECIFICATIONS

KIP C7800 systems may be easily installed into virtually any wide format color printing environment. The installation of KIP C7800 systems and integrated workflow solutions increases wide format color print production and helps to optimize the management of digital and hard-copy information.

As color technical documents grow more complex, powerful KIP C7800 solutions help businesses work better, faster and more efficiently.



- KIP C7800 Specifications
- KIP C7800 Stack & Fold Specifications
- KIP 2300 Scanner Specifications

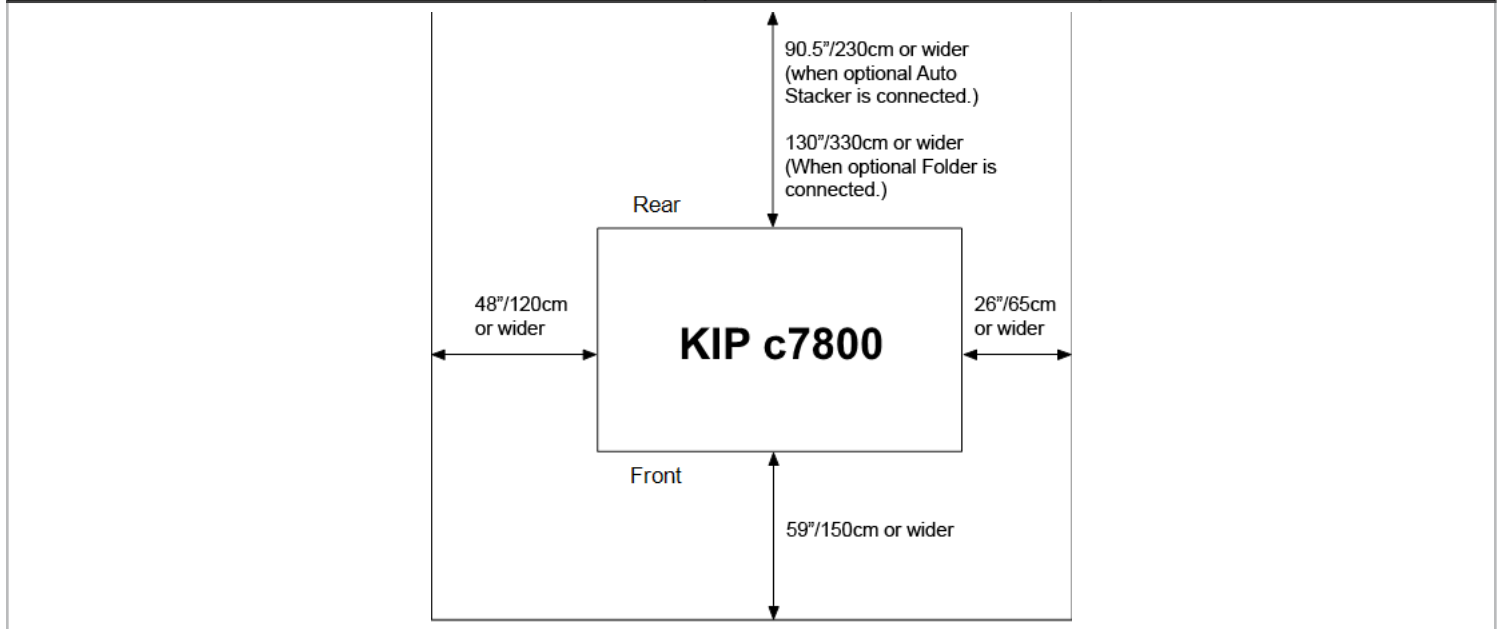
KIP C7800 SPECIFICATIONS

Specification	KIP C7800 Specifications	
General		
Description	High Production B&W and Color Wide Format print system	
Type	LED Array Electro Photography	
Fusing Method	Heat Roller -Pressure	
Development	Contact type, single component non magnetic	
Charge Method	Corona	
Transfer Method	Transfer roller with Transport belt	
Speed	Up to 4,200 square feet/390 sq. m. per hour in B&W Up to 3,500 square feet/325 sq. m. per hour in Color	
First Print Output Time	< Less than 43 seconds E size/A0	
Warm Up Time	3 minutes from power on	
Configurations	Console Printer	
Roll	3 Rolls with Auto Sheet Feed	
Power Consumption	Standby - .8kW Printing - 2.0kW Power Saving Mode - 10W	
Electrical Requirements	230V 50/60Khz 20A	
Printer		
Print Resolution	600 x 2400 dpi	
Paper Capacity	4,500 square feet/418 sq. m. + Auto Sheet Feeder	
Output Size Width	11 - 36 inch/297mm to 914mm	
Output Size Length	8.5 inches to 130ft/210mm to 40m	
Media Loading	Automatic roll loading with auto trim	
Standard	Bond: 20lb,24lb,32lb,40lb, Translucent Bond 18lb (70 - 150gsm) Film: Double Matte/3mil (75 micron)	
Specialty	Weather Proof Banner Film, Waterproof Bond 24lb, Film Clear Adhesive back/6mil(2mil film/4mil carrier, Blueback 32lb, Digital Banner Media/10mil, Bright Fluorescent Bond 24lb,(Yellow,Orange,Green,Blue)	
Environment		
Dimensions	54"/1376mm (Width) x 31"/790mm (Depth) x 57"/1450mm	
Minimum Space Requirements	59"/1,498mm (Front), 90"/2,300mm (Rear w/Stacker), 48"/660mm (Left), 26" (Right) Distances are from printer to wall/obstruction	
Humidity	20 to 70% RH (Non Condensing)	
Temperature	59 to 81 Fahrenheit/15 to 27 Celsius	
Weight	Approximately 1190lbs/540kg	
Ozone	Less than 0.05ppm (Average 8hrs)	
Acoustic Noise	Less than 60db (Standby), Less than 65db (Printing)	
Image Processing		
Controller type	Embedded with Windows XPe	
CPU	Intel Quad Core 2.13GHz	
Memory	3GB	
Hard drive	SSD SATA 3 160 GB	
Compatible File Formats	Raster Color: TIF, JPG, JPG2000, PNG, BMP, GIF, TGA, RLE/RLC Vector Color/Mono: HPGL, HPGL/2, HP-RTL, Postscript(PS/EPS), Adobe PDF, Autodesk DWF, Multipage PDF & DWF Raster Monochrome: TIF Grp 3 & 4, CALS Grp 4, Grayscale TIF, IBM IOCA, Intergraph CIT/TG4, Government C4 Vector Monochrome: Calcomp 906/907	
Software Applications		
Standard	Touch Screen Printing: Up to 10 mono/color images from USB or Network locations Certified ACAD Drivers: Currently released versions up to 2012 Microsoft Certified Windows Drivers: Print in b&w & color Cost Review application: PC based application to review toner/service costing on the C7800	
Technical	KIP Print: PC based submission utility features ribbon interface job building KIP PrintNET: Web Browser based submission utility delivers powerful browser independent features Cloud Printing: KIP Web Apps offer the ability to produce large prints using nothing more than an email attachments and key words	
Graphics	KIP RIP Professional Color Management Application	
Options		
Hardware	KIP C7800 Stacker, KIP Fold System	
Software	PDF and Postscript printing, KIP Connectivity Package: Allows external RIP interface	

KIP C7800 SPECIFICATIONS

Specification	KIP C7800 Specifications	System
Space, Electrical & Environmental Requirements		
Weight	1,190 lbs/540 kg.	
Dimensions	61"/1,376mm (W) x 37.5"/790mm (D) x 57"/1,450mm (H), (IPS & stacker not included)	
Minimum Distance from Wall	Rear 90.5"/230 cm. Left 40"/100 cm. Right 48"/120 cm. Front 40"/100 cm.	
Total Space	Print System 156"/13 ft./3.97m. (W) 168"/14 ft./4.25m. (D) Print, Copy & Scan System 192"/16 ft./4.88 m. (W) 168"/14 ft./4.25 m. (D)	
Input Power	1x 220V - 240V 50/60 Hz, 16A, 2x 110V-120V 50/60 Hz, 20A (with IPS/Stacker) 3x 110V-120V 50/60 Hz, 20A (with copy/scan system)	
Electrical Receptacle	Nema 6-20R, Nema 5-20R	
Network Port	One RJ-45 port-CAT5 or higher. LAN must be rated at 100/1000mb	
Power Consumption	3.0 kwh (printing), 1.0 kwh (standby)	
Acoustic Noise	< 65 db (printing), < 55 db (standby)	
Room Temperature	55-85 °F/10-32 °C	
Site Survey	KIP C7800 site survey documentation must be completed prior to installation	

Spatial Requirements



KIP C7800 FOLD SYSTEM SPECIFICATIONS

KIP C7800 Folding System	Specification
General	
KIP System Integration	KIP C7800
Fold Speed	Maximum print production speed
Maximum Print Width	36"/914mm
Fold Selections	Fan, Packet, Book, Staple and Mailer
Maximum Fan Fold Length	19.6 ft./6m Standard, unlimited Optional
Maximum Cross Fold Length	8 ft./2.5m
Metric Print Sizes	A3 - A0
Metric Fold Packet Sizes	Cross Fold: 200mm to 310mm Fan Fold: 180mm to 300mm
Dimensions	70"/ 1,778mm (W) x 39"/ 991mm (D) x 49"/ 1,245 mm (H)
Weight	650 lbs/295 Kg
Electrical Requirements	100/115/220-240V, 15 Amps
Safety Approvals	UL, EMC, Tüv, CE-Mark



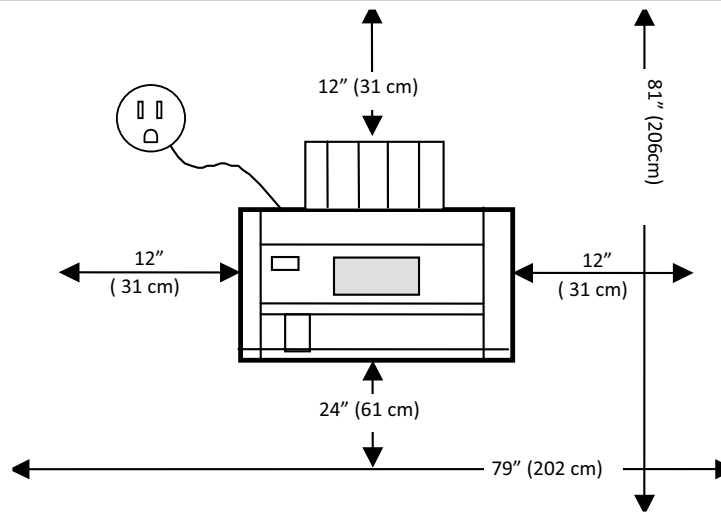
KIP C7800 STACKING SYSTEM SPECIFICATIONS

C7800 Stacker Specification		
General		
Configuration	Integrated Stacker	
Acceptable Media Width	36"/914 mm maximum	
Stacking	500+ sheets of bond paper	
Wait Time	0.5 second	
Input Power	Voltage: 100-240VAC Current: 0.5A (at 100V) Frequency: 50/60Hz	
Power Consumption	50W maximum	
Environmental Conditions	50-90° fahrenheit 10-32.5° centigrade, 20-85%RH (Non condensing)	
Acoustic Noise	57 db or less (during operation with an integrated printer)	
Outer Dimension	41"/1,040mm (Width) x 55"/1,400mm (Depth) x 58"/1480mm (Height)	
Weight	Approximately 125 lbs.	

KIP 2300 SCANNER SPECIFICATIONS

Specification	KIP 2300 Specifications	Scanner
General		
Weight	160 lb. /73 kg	
Dimensions (Scanner Only)	55" / 140 cm (W) x 21" / 53 cm (D) x 11" / 28 cm (H)	
Minimum Distance from Wall	Rear - 12"/31 cm Left - 12"/31 cm Right - 12"/31 cm Front - 24"/61 cm	
Total Space	79" / 202 cm (W) x 81" / 145 cm (D)	
Electrical	15 amps, 120VAC	
Electrical Receptacle	220 VAC	
Power Consumption	190 watts	
Environmental Conditions	53-85°F/10 – 29.4°C 20-80% Relative humidity	

Spatial Requirements



KIP 2300 Scan to File PC

Recommended Minimum Computer Specifications for KIP Color Advanced/Pro or KIP RIP Software

- Quad Core Processor (Intel i5 or higher)
- Windows XP / 7 (32 or 64 bit)
- 8 GB RAM with 64 bbit or 3GB RAM 32 bit
- 1 TB Hard Drive
- 1 Gig RJ45 Lan Port
- DVD/CD Optical Drive
- One available USB 2.0 ports or higher for Kip Color Advanced/Pro (scanner connection)
- One PCI-e port (for use with the KIP Tru-Speed card (HIL))
- One available USB 2.0 ports or higher for KIP RIP (product code connection)
- 20" flat panel monitor (with VESA - 75 or 100 patterns for use with the KIP Scanner Stand)
- USB Keyboard & Mouse





WWW.KIP.COM

U.S.A. ■ Phone: (800) 252-6793 ■ Email: info@kipamerica.com
CANADA ■ Phone: (800) 653-7552 ■ Email: info@kipcanada.com

KIP is a registered trademark of the KIP Group. All other product names mentioned herein are trademarks of their respective companies.
All product features, prices and specifications are subject to change without notice. Complete product specifications are available at www.kip.com