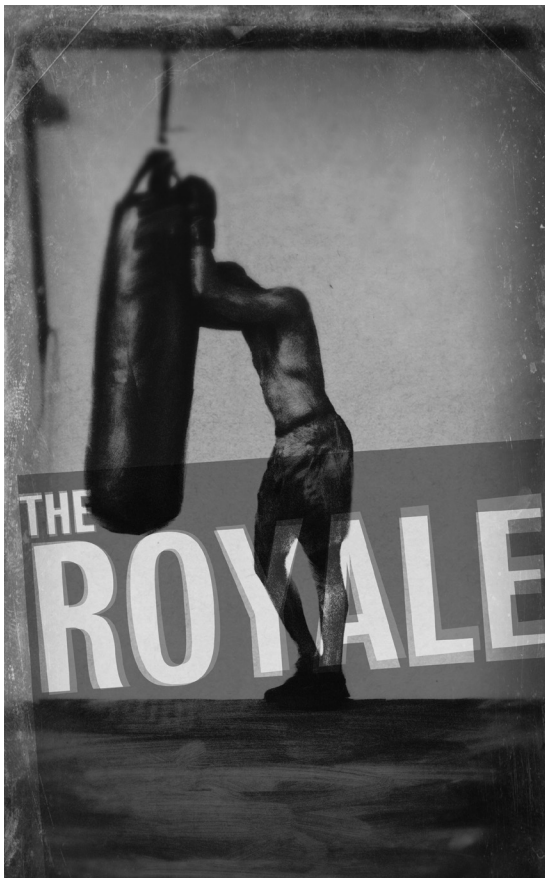


Kirk Douglas Theatre 2012/13 Season



DouglasPlus

Jomama Jones Radiate

Conceived by Daniel Alexander Jones with Bobby Halvorson
A Workshop Presentation / August 3 and 4, 2012

FIRST SEASON PRODUCTION

Elephant Room

by Trey Lyford, Geoff Sobelle and Steve Cuiffo
Directed by Paul Lazar
A CTG Commission
West Coast Premiere / August 22 – September 16, 2012

SECOND SEASON PRODUCTION

Gate Theatre Dublin's production of

Krapp's Last Tape

by Samuel Beckett
Performed by John Hurt
Directed by Michael Colgan
October 9 – November 4, 2012

THIRD SEASON PRODUCTION

The Second City's

A Christmas Carol: Twist Your Dickens!

by Peter Gwinn and Bobby Mort
World Premiere / November 24 – December 30, 2012

DouglasPlus

The Royale

by Marco Ramirez
Directed by Daniel Aukin
A Reading
Performed in the rehearsal room, Upstairs @ KDT
February 3, 2013

FOURTH SEASON PRODUCTION

The Nether

by Jennifer Haley
Directed by Neel Keller
World Premiere / March 19 – April 14, 2013

FIFTH SEASON PRODUCTION

The Royale

by Marco Ramirez
Directed by Daniel Aukin
World Premiere / April 28 – June 2, 2013

DouglasPlus

Neva

Written and Directed by Guillermo Calderón
English Translation by Andrea Thome
Co-produced with South Coast Repertory and La Jolla Playhouse
A Workshop Presentation
Performed in the rehearsal room, Upstairs @ KDT
June 11 – 16, 2013

CENTER THEATRE GROUP BOARD OF DIRECTORS
2012/2013 OFFICERS

HONORARY CHAIRMAN Lew R. Wasserman†	Dan Sernett Cheryl A. Shepherd Eva Stern Sue Tsao
CHAIRMAN Martin Massman	EMERITUS Harold Applebaum Ronald J. Arnault Judith Beckmen Gordon Davidson Phyllis Hennigan Leonard Hirshan Richard Kagan Nancy Olson Livingston O. Kit Lokey Diane Morton
PRESIDENT William H. Ahmanson	PAST PRESIDENTS Lew R. Wasserman† Marshall Berges† Armand S. Deutsch† Walter Mirisch Henry C. Rogers† Richard E. Sherwood† J. David Haft† Lawrence J. Ramer† Stephen F. Hinchliffe, Jr. Phyllis Hennigan Richard Kagan Martin Massman
VICE PRESIDENT Ava Fries	
SECRETARY Amy R. Forbes	
ASSISTANT SECRETARY Susan Grode	
TREASURER Dr. Steven Nagelberg	
BOARD MEMBERS Dean V. Ambrose Pamela Beck Norris J. Bishton, Jr. Howard Bragman Diana Buckhantz Dannielle Campos Ramirez Joseph C. Carieri Marcy Carsey Nancy de Brier Cástulo de la Rocha Vin Di Bona Dante Di Loreto Frances Flanagan Barbara Fodor Eric R. Garen Kiki Ramos Gindler Patricia Glaser Brindell Roberts Gottlieb Tim Hanlon Stephen F. Hinchliffe, Jr. Darell L. Krasnoff Lucy M. Labruzzo Jennifer Altfeld Landau Carol Mancino Antonio Manning Dale S. Miller Walter Mirisch Jo Muse Edward B. Nahmias Diane Neubauer Edward L. Rada Bill Resnick Michael Ritchie Laura Rosenwald Bruce L. Ross	

†Deceased



1

(1) David St. Louis, (2) Robert Gossett, (3) Diarra Oni Kilpatrick, (4) L TO R: playwright Marco Ramirez, director Daniel Aukin and CTG literary manager Pier Carlo Talenti, (5) Keith Szarabajka and (6) Desean Terry at rehearsal for *The Royale*.

PHOTOS BY CRAIG SCHWARTZ.



2



3



4



5



6



Center Theatre Group

L.A.'s Theatre Company

Ahmanson Theatre
Mark Taper Forum
Kirk Douglas Theatre

Michael Ritchie, ARTISTIC DIRECTOR **Edward L. Rada**, MANAGING DIRECTOR
Gordon Davidson, FOUNDING ARTISTIC DIRECTOR

Presents

the World Premiere of



BY

Marco Ramirez

WITH

Robert Gossett **Diarra Oni Kilpatrick** **David St. Louis**
Keith Szarabajka **Desean Terry**

SET AND COSTUME DESIGNER

Andrew Boyce

LIGHTING DESIGNER

Lap Chi Chu

ORIGINAL MUSIC AND SOUND DESIGNER

Ryan Rumery

MOVEMENT AND RHYTHM

Ameenah Kaplan

CASTING

Mark B. Simon, CSA

DRAMATURG

Joy Meads

PRODUCTION STAGE MANAGER

Randall K. Lum

ASSOCIATE ARTISTIC DIRECTOR

Kelley Kirkpatrick

DIRECTED BY

Daniel Aukin

April 28–June 2, 2013
Kirk Douglas Theatre

The Royale is generously supported in part by Joni and Miles Benickes,
Co-Chairs of the Artists & Educators Forum.

Please turn off all electronic devices such as cellular phones, PDAs, beepers and watch alarms. The use of any recording device, either audio or video, and the taking of photographs, with or without flash, is strictly prohibited.



The company of *The Royale* during rehearsal. PHOTO BY CRAIG SCHWARTZ.

CAST

(in alphabetical order)

Wynton **Robert Gossett**
Nina **Diarra Oni Kilpatrick**
Jay **David St. Louis**
Max **Keith Szarabajka**
Fish **Desean Terry**

SETTING

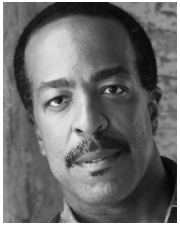
Somewhere in the U.S.
Sometime between 1900 and 1920.

The Royale will be presented without an intermission.

STAGE MANAGER

Scott Harrison

Who's Who



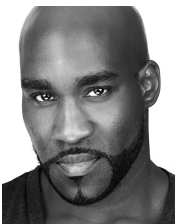
ROBERT GOSSETT (Wynton) appeared in Lloyd Richard's production of *Fences* (Broadway), Hal Scott's production of *A Raisin in the Sun* and Donald McKayle's

The Last Minstrel Show. Other Theatre: *Manhattan Made Me*, *Sons and Fathers of Sons*, *A Soldier's Play* and *Colored People's Time* (Negro Ensemble Company of N.Y.). Regional Theatre: Geva Repertory, Philadelphia Theatre Company, Milwaukee Rep., Lorraine Hansberry Theatre of San Francisco. Los Angeles: Doolittle Theatre (*Fences*), Mojo Ensemble, LATC and Ebony Rep. (*Fraternity*). Awards: NAACP Theatre Award and Drama-Logue Award for *Indigo Blues* (Mojo Ensemble), LA Weekly Theatre Award and Drama-Logue Award for *Washington Square Moves* (also Mojo). Film includes *Arlington Road*, *The Net* and *White Man's Burden*. Independent Film: *Jimmy Zip* (Best Film, Hollywood Film Festival). Numerous TV credits. Currently starring on the TNT network series *Major Crimes* and recently starred on TNT's *The Closer*.



DIARRA ONI KILPATRICK (*Nina*). Theatre: Oya in *In the Red and Brown Water* (Fountain Theatre, LA Weekly Award); Lou in *The Interlopers* (Bootleg Theater, Ovation and

NAACP Theatre Award nominations); *Three Sisters After Chekhov* (Lower Depth Theatre Ensemble); *The River Niger* (Robey Theatre); *Sick* and *Laws of Sympathy* (Playwrights' Arena); *The Piano Lesson*, *Stage Walkers*; *The Devil is Beating His Wife* (NAACP Theatre Award nomination, Best Playwright). TV: *Southland*, *Private Practice*, *Mike and Molly*, *Hart of Dixie*, *The Game* and series regular on MTV's improv comedy show *Disaster Date*. Film: *Talking with the Taxman*, *Hollywood Je'taime*, *Henry IV*, *Stand Down Solder*. She studied at NYU's Tisch School of the Arts.



DAVID ST. LOUIS (*Jay*). Film: *At Your Convenience*, *Trigger Effect*, *Temptation*. TV: NCIS, *Third Watch*, *Law & Order*, *Law & Order: SVU*, *A Royal Birthday*, *The Jury*, *One Life To Live*, *Homicide Life on the Streets*, *The*

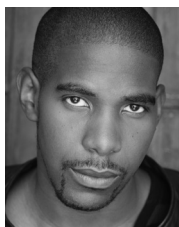
Secret Path. Broadway: *Harlem Song*, *Rent*, *Jesus Christ Superstar*, *The Scarlet Pimpernel*. Regional: *Intimate Apparel* (Pasadena Playhouse), *Thunder Knocking at the Door* (Cincinnati Playhouse), *Ruined* (Geffen Playhouse and Intiman Theatre), *Parade* (Mark Taper Forum), *Cousin Bette* (Antaeus Theatre Co.), *The Life* (Jaxx Theatricals), *Ragtime* (PCPA Theatre), *Porgy and Bess* (Zach Scott Theatre), *Golden Boy* (Long Wharf Theatre), *Henry V* (Shakespeare Theatre), *Candide* (Arena Stage) and *Bessie's Blues* (Studio Theatre). Awards: Ovation Award (*Parade*), Helen Hayes Award (*Bessie's Blues*). 2012 Lunt Fontanne Fellow.

Secret Path. Broadway: *Harlem Song*, *Rent*, *Jesus Christ Superstar*, *The Scarlet Pimpernel*. Regional: *Intimate Apparel* (Pasadena Playhouse), *Thunder Knocking at the Door* (Cincinnati Playhouse), *Ruined* (Geffen Playhouse and Intiman Theatre), *Parade* (Mark Taper Forum), *Cousin Bette* (Antaeus Theatre Co.), *The Life* (Jaxx Theatricals), *Ragtime* (PCPA Theatre), *Porgy and Bess* (Zach Scott Theatre), *Golden Boy* (Long Wharf Theatre), *Henry V* (Shakespeare Theatre), *Candide* (Arena Stage) and *Bessie's Blues* (Studio Theatre). Awards: Ovation Award (*Parade*), Helen Hayes Award (*Bessie's Blues*). 2012 Lunt Fontanne Fellow.



KEITH SZARABAJKA (*Max*) makes his Center Theatre Group debut in *The Royale*. Keith has worked extensively in film, theatre, television and video games, but

spent most of the last 18 years coaching his now teenaged sons, Jack and Caleb, in baseball and soccer. L.A.: *Mlle. God*. (EST-L.A.). Broadway: *Search and Destroy*, *Doonesbury*, *WARP!*. Off-Broadway: *Hyde in Hollywood*, *Women of Manhattan*, *Digby*, *Class Enemy* and *Bleacher Bums* (which he co-authored). Film: *Argo*, *The Dark Knight*, *A Perfect World*, *Missing*. TV (regular or recurring): *Sons of Anarchy*, *Cold Case*, *Angel*, *Profit*, *The Equalizer*. Keith was a member of the Organic Theater Company of Chicago with Joe Mantegna, John Heard, Dennis Franz, Meshach Taylor, Jack Wallace and Roberta Custer under artistic director Stuart Gordon. He is currently a member of EST-L.A.



DESEAN TERRY (*Fish*). grew up in Los Angeles watching plays at CTG, so he's particularly excited to be working at the Kirk Douglas Theatre. In Los Angeles, he's worked

with Chalk Repertory Theatre, the Black Dahlia Theatre, and some of his first professional roles were with the Shakespeare Center of Los Angeles. He's a graduate of the Juilliard School and Loyola Marymount University. His TV credits include *Southland*, *Shameless*, *House* and *Grey's Anatomy*, to name a few. You can see him in the web-series *The Couple* and *That Guy* from Black & Sexy TV. Desean would

like to thank his amazing friends and family, especially Deborah and Cris, for their unending support of the dream.

MARCO RAMIREZ (*Playwright*). Regional: *Broadsword* at Black Dahlia Theatre (Los Angeles), Actors Express (Atlanta), The Gift Theatre (Chicago) and *Mermaids/Monsters* at The Kennedy Center for the Performing Arts (D.C.). Honors include two Heideman Awards at Actors Theatre of Louisville's Humana Festival, Juilliard's Lila Acheson Wallace Playwriting Fellowship, the Bryan Award from The Fellowship of Southern Writers, Lincoln Center's Le Comte du Nouy Award, and TCG's Edgerton Foundation New Play Award. TV writing credits include *Sons of Anarchy* (FX) and *Da Vinci's Demons* (Starz).

DANIEL AUKIN (*Director*) is a New York-based director whose recent work includes *What Rhymes with America* by Melissa James Gibson (the Atlantic), *Heartless* by Sam Shepard (Signature), *4000 Miles* by Amy Herzog (Lincoln Center Theater, Pulitzer Prize Finalist, Time Magazine Play of the Year 2012), *The Bad and the Better* by Derek Ahonen (The Amoralists), *The Ugly One* by Marius von Mayenburg (Soho Rep.) and *This* by Melissa James Gibson (Playwrights Horizons and Center Theatre Group's Kirk Douglas Theatre). Other credits include *Back Back Back* by Itamar Moses (MTC), Arthur Miller's *A View from the Bridge* (Arena Stage), Melissa James Gibson's *Current Nobody* (Woolly Mammoth), Elmer Rice's *The Adding Machine* (La Jolla Playhouse). As Artistic Director of Soho Rep (1998-2006): Mark Schultz's *Everything Will be Different*, Melissa James Gibson's *[sic]* (Obie Award), Quincy Long's *The Year of the Baby*, Mac Wellman's *Cat's-Paw*, Marie Irene Fornes' *Molly's Dream* (Obie Award) and Melissa James Gibson's *Suitcase*. Upcoming: the remounting of Joshua Harmon's *Bad Jews* (Roundabout). Daniel teaches in the MFA program at The New School for Drama.

ANDREW BOYCE (*Set and Costume Designer*). Recent off-Broadway credits include *Buyer and Cellar* (Rattlestick); *Trevor* (Lesser America); *Red Handed Otter* (Playwrights Realm/Cherry Lane); *Dreams of Falling*, *Dreams of Flying* (Atlantic Theater Company); *The Judy Show* (DR2); *The Sporting Life* (Studio 42); *The Ones That Flutter and A Kid Like Jake* (SPF). Regional credits with Actors Theatre of Louisville, the Alliance, Curtis

Opera Theatre, Williamstown, Des Moines Metro Opera, Westport Country Playhouse, Syracuse Stage, Theatreworks (CA), Bay Street Theatre, Portland Center Stage, The Wilma, Marin Theatre Company, The Magic Theatre and American Players Theatre, among others. Andrew is a member of the Wingspace Design Collective and is a graduate of Yale School of Drama, where he is currently on faculty in the design department. www.andrewboycedesign.com

LAP CHI CHU (*Lighting Designer*). Regional designs include work at the Mark Taper Forum, Oregon Shakespeare Festival, La Jolla Playhouse, The Old Globe, Berkeley Repertory Theatre, The Goodman Theatre, The Shakespeare Theater, Arena Stage, Hartford Stage, San Jose Repertory Theatre, Dallas Theater Center, Portland Center Stage and Evidence Room. New York design credits include work at The Public Theater, New York Theatre Workshop, Second Stage Theatre, Performance Space 122 and Kitchen Theatre Company. He is the lighting/video designer for ChameckiLerner Dance Company (*Costumes by God, Visible Content, Hidden Forms, I Mutantes Seras, Por Favor* and *Não Me Deixe*), which has performed in the United States and Brazil. Awards include an Ovation Award for Lighting Design for *The Convert*, the L.A. Drama Critics Circle Angstrom Award for Career Achievement in Lighting Design, multiple Bay Area Theatre Critics Circle Awards, a "Drammy" for best lighting, as well as a Lucille Lortel nomination for *The Good Negro* at The Public Theater. Mr. Chu is on the lighting design faculty at California Institute of the Arts.

RYAN RUMERY (*Original Music and Sound Designer*) is a musician and composer living in Brooklyn, New York. Most of his work has been heard in theatres across the United States, including the Broadway production of *Thurgood* starring Laurence Fishburne. His recent off-Broadway works include *All in the Timing* (Primary Stages); *What Rhymes with America* (Atlantic); *The Submission* (MCC); *4000 Miles* (Lincoln Center/LCT3); *Ivanov*, *Cherry Orchard*, *Three Sisters*, *Orlando* and *Uncle Vanya* (Classic Stage Company); *The Emperor Jones* (Irish Rep., Lucille Lortel nomination); *We Live Here* (MTC). Regionally Ryan has worked on over 175 shows. His film credits include *SyncroNYCity*. He plays drums in the Colorado band The Joy of Harm (finishing an EP produced by Craig Schumacher), as well as for New York-based Palissimo's The Painted Bird.

AMEENAH KAPLAN (*Movement and Rhythm*). Off-Broadway: *Stomp* (original American cast), *Hamlet* (The Public Theater). Center Theatre Group: *The Legend of Alex*. Other L.A.: *In the Red and Brown Water*, *The Ballad of Emmett Till* (Fountain Theatre); *Bash'd: A Gay Rap Opera*, *The Women of Brewster Place*, *Altar Boyz*, [Title of Show] and *The Daddy Machine* (Celebration Theatre); *Oedipus the King*, *Mama!*, *CHiPs*, *Frosty the Snow Manilow*, *A Christmas Carol King*, *Santa Claus is Coming to Motown*, *The Comedy of Aerosmith*, *Jackson Frost*, *Alice in One Hit Wonderland II* and *It's a Stevie Wonderful Life* (Troubadour Theater Company); *Sissy* (Company of Angels); *Prove It On Me* (L.A. Women's Theater Project); *Princess Bean's Messy World* (Princess Bean Productions). Original work: *Everyman for Himself* (Falcon Theatre).

MARK B. SIMON, CSA (*CASTING*). CTG: *The Royale*, *Neva* (Kirk Douglas Theatre); *The Scottsboro Boys*, *End of the Rainbow*, *Backbeat* (Ahmanson Theatre); *What the Butler Saw*, *A Parallelogram*, *Los Otros* (Mark Taper Forum). Prior to joining the CTG casting department, Mark worked as a New York-based independent casting director for clients including Hal Prince, Jason Robert Brown, Graciela Daniele, Susan Stroman, Patricia Birch, Stephen Sondheim, Marvin Hamlisch, Nick Hytner, Alfred Uhry, Carol Burnett, Jeremy Sams, New York City Opera and the Radio City Christmas Spectacular on projects including *13, Parade*, *The Last Five Years*, *Show Boat*, *Candide*, *3hree*, *Hollywood Arms*, *Bounce*, *Lovemusik*, *Paradise Found*, *Sweeney Todd*, *Chita Rivera: The Dancer's Life*, *Sweet Smell of Success* and *Ragtime*. Treasurer of the Board, Casting Society of America.

JOY MEADS (*Dramaturg*). Dramaturgy credits at CTG: *Waiting for Godot*, *Radiate*, as well as *A Parallelogram* and *The Steward of Christendom* (upcoming). Previous to CTG, Joy spent four cold but rewarding years at Chicago's Steppenwolf Theatre Company, where she was Literary Manager. Prior to Steppenwolf, Joy served as the Associate Artistic Director of California Shakespeare Theater, where as director of the theatre's New Works/New Communities program, she produced multi-year community-based processes of new play creation. Joy has also worked with Portland Center Stage, the O'Neill, Chicago Dramatists, The Playwrights' Center, Native Voices at the Autry, University of Iowa New Play Festival, Hedgebrook, Campo Santo + Intersection for the Arts, Chicago's Dog and Pony Theatre Co. and Pacific Playwrights' Festival.

RANDALL K. LUM (*Production Stage Manager*). CTG (Kirk Douglas Theatre): *American Night: The Ballad of Juan José* (Oregon Shakespeare Festival and La Jolla Playhouse). Regional: *Fallen Angels* (Pasadena Playhouse); *Equivocation* (Oregon Shakespeare Festival, Arena Stage, Seattle Rep); *The Unfortunates*, *Othello*, *Ruined*, *Dead Man's Cell Phone*, *Willful* and *Fences* (Oregon Shakespeare Festival); *Time Stands Still* and *33 Variations* (TheatreWorks); *Restoration Comedy* (California Shakespeare Theatre); *Wit*, *Intimate Apparel*, *Three Days of Rain*, *Princess Marjorie*, *Brooklyn Boy*, *The Further Adventures of Hedda Gabler*, *Blue Door*, *Kimberly Akimbo*, *Sight Unseen*, *Everett Beekin*, *My Wandering Boy*, *Pterodactyls* and *Safe in Hell* (South Coast Repertory); *The Birds* (South Coast Repertory and Berkeley Rep); *Uncle Vanya* (American Conservatory Theater); *Scapino!*, *Elektra*, *Catsplay*, *Angels Fall*, *Quartermaine's Terms* (Old Globe Theatre); Other: Los Angeles Ballet, Kawasaki Motorcycles, San Francisco Convention Bureau.

SCOTT HARRISON (*Stage Manager*). Most recent – Pasadena Playhouse: *Fallen Angels*. Center Theatre Group: *Nighthawks* (world premiere), *Solomania!* (*Taking Flight* and *The Watts Towers Project*), *365 Days/365 Plays: Week One* and *Dogeaters*. South Coast Repertory: Resident Stage Manager (16 seasons). Selected highlights: *Freedomland*, *Hurrah at Last*, *Everett Beekin*, *Brooklyn Boy*, *The Beard of Avon*, *Dinner with Friends* (world premieres); *Cyrano de Bergerac*, *Much Ado About Nothing*, *Taming of the Shrew* (director Mark Rucker); *A Christmas Carol* (15 seasons) and *La Posada Magica* (world premiere). Other Regional: NoHo Arts Center (*Cesar & Ruben*, the musical story of Cesar Chavez and Ruben Salazar), California Shakespeare Theatre, Laguna Playhouse, Goodman Theatre, Intiman Theatre, Shakespeare Festival L.A. and La Mirada Performing Arts Center (*The Broadway Series*, two seasons). Education: Pepperdine University, Bachelor of Arts.



MICHAEL RITCHIE (*Artistic Director*) is in his eighth season as Center Theatre Group's Artistic Director, and has led over 100 productions to the Ahmanson, Taper and Douglas stages since his arrival in 2005. From 1996 to 2004 Michael was the Producer of the Williamstown Theatre Festival and prior to that he was a Production Stage Manager in NYC. At CTG,

he has premiered six musicals that moved to Broadway — *The Drowsy Chaperone* (which won 13 Tony Award nominations), *Curtains* (eight Tony nominations) 13, 9 to 5: *The Musical*, *Bloody Bloody Andrew Jackson* and *Leap of Faith*. He has produced 30 world premieres including the musicals *Minsky's*, *Venice* and *Sleeping Beauty Wakes*, and the plays *Bengal Tiger at the Baghdad Zoo* (a Pulitzer Prize finalist that also moved to Broadway), *Water & Power* and *Yellow Face*, and he has presented a broad range of plays and musicals ranging from *Dead End to The Black Rider to Edward Scissorhands* to blockbusters such as *God of Carnage*, *Mary Poppins*, *Jersey Boys* and *August: Osage County*. In addition, Michael inaugurated CTG's New Play Production Program, designed to foster the development and production of new work.



EDWARD L. RADA
(Managing Director) returned to Center Theatre Group in 2011 after previously serving as CTG's Chief Financial Officer for 12 years (1996 – 2008). Rada spent three years (2008 – 2011) as President of the Music Center Foundation, a non-profit corporation that holds and invests the endowment and reserve funds for the Music Center and its resident companies (including CTG). Prior to his years at CTG, he was the Director of Finance at The Old Globe in San Diego and principal of Rada &

Associates, an accounting firm that specialized in entertainment-related non-profit organizations and theatrical productions. He is a graduate of Occidental College in Los Angeles with numerous post-graduate coursework and credentials. He currently serves on the board of directors for Entertainment Industry Foundation, Theatre @ Boston Court, and United Support of Artists for Africa/USA for Africa, among other affiliations. He also serves on the board of trustees for the pension, health and welfare and 401(k) plans of I.A.T.S.E. Local 33 Stagehands Union.

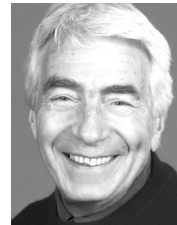


DOUGLAS C. BAKER
(Producing Director) is now in his 23rd season at CTG. Previously, he managed Broadway and touring productions including *Tru*, *Born Yesterday*, *The Gospel at Colonus*, *Annie*, *A Chorus Line*, *Working*, *The Wiz* and *Legends!* starring Mary Martin and Carol Channing which premiered at the Ahmanson Theatre in 1986. Baker is a graduate of Albion College, is an active member of the Broadway League, the Independent Presenters Network and is a proud member of the Association of Theatrical Press Agents and Managers.



KELLEY KIRKPATRICK
(Associate Artistic Director). Since arriving at CTG in 2005, Kelley has produced over 40 productions at the Ahmanson Theatre, Mark Taper Forum and Kirk Douglas Theatre,

many of which have gone on to future lives on Broadway, off-Broadway and beyond. In addition to producing shows across CTG's three stages, he has had the privilege of collaborating with numerous local and national artists to commission and develop new works.



GORDON DAVIDSON
(Founding Artistic Director) led the Taper throughout its first 38 seasons, guiding over 300 productions to its stage and winning countless awards for himself and the theatre — including the Tony Award for theatrical excellence, Margo Jones Award, The Governor's Award for the Arts and a Guggenheim fellowship. *The Kentucky Cycle* and *Angels in America* (Part One) won the Pulitzer in consecutive years and, in 1994, three of the four plays nominated for the Tony Award for Best Play were from the Taper (*Angels in America* won). In 1989 Gordon took over the Ahmanson and, in 2004, he produced the inaugural season in the Kirk Douglas Theatre.

ADDITIONAL STAFF FOR THE ROYALE

Vocal Coach Natsuko Ohama
Movement and Rhythm Assistant . . Christopher Eclipse
Assistant Lighting Designer Jonathan Lebovic
Assistant Costume Designer Jenny Foldenauer
Technical Direction Lead. Sarah Sowell
Prop Lead Sarah Steinman
Stage Supervisor Victor Cobos
Wardrobe Supervisor. Christian Svenson
Lightboard Operator/Programmer. . . Aaron Staubach
Production Electricians. Lunchbox, Juan Lozano
Run Crew Ryan Tirrell
Audio Assistant Corwin Evans

Electrics Crew

Randy Bosh, Katrina Coulourides, Juan Lozano,
Lunchbox, Justin Preston, Aaron Staubach,
Ryan Tirrell, Erin Whitcomb.

Scenic Artists

Katie Polebaum, Katrina Coulourides, Amanda Smith.

Build Crew

Eric Adams, Victor Cobos, Adam Coggins, Michael Field, Alex Freeman, Ryan Godbout, James Jonson, Sean Kloc, Joseph Lupo, Donovan Martinelli, Geno Monteiro, Boude Charles Moore, Patti Moore, Max Oken, David Patrick, Brian Slaten.

Leads

Jane Bacon, Jaquelyn Johnson, Michael Pappas,
Elizabeth Motuapuaka.

Concierges

Trevor Algatt, Jen Bailey, John Brooks, Olivia Choate,
Mimi Erlick, Mike Fallon, Amin El Gamal,
Sarah Harburg-Petrich, Erin Mulvey,
Stephen Lydic, Janice Motuapuaka.

Ushers

Benito Cardenas, Bonita Carter, Marilyn DePaula,
Angela Garcia, Nicole Nabo, Max Oken, Jill Steele.

Concessions

Abilene Gonzalez, Sondra Mayer, Ashley Nissim,
Dane Rold, Kotaro Watanabe.

Stage Door Attendants

Cory Aycocock, Danika Burmester,
Christopher Nucho, Ian Ray.

Credits

Costumes provided by the Center Theatre Group Costume Shop and additional staff: Cutter/Draper – Lisa Logan; First Hands – Iris Marshall, Whitney Oppenheimer, Jennifer Wolff; Stitchers – Ophelia Brown, Kelly Cercone, Allison Dillard, Leonardo Lopez, Heather O'Shea; Crafts/Dyer/Painter – Whitney Oppenheimer, Kitty Youngs; FIDM Interns: Kelsey Crampton, Agnes Ingram, Stephanie Semerenko. Program coordinated by Shannon Smith; designed by Haruka Hayakawa. *The Royale* artwork by Christopher Komuro. Rehearsal and production photography by Craig Schwartz.

Special Thanks

Mark Komuro, Mike Farr, The Yard boxing gym.

Website

CenterTheatreGroup.org
#TheRoyale

Friend us on Facebook **Center Theatre Group**
Follow us on Twitter @CTGLA
Subscribe on Youtube **CTGLA**



The Actors and Stage Managers employed in this production are members of Actors' Equity Association, the union of professional actors and stage managers in the United States.



The Director is a member of the Stage Directors and Choreographers Society, an independent national labor union.

Center Theatre Group is a member of the American Arts Alliance, the Broadway League, Independent Producers' Network (IPN), LA Stage Alliance, League of Resident Theatres (LORT), National Alliance for Musical Theatre (NAMT) and the Theatre Communications Group (TCG).



Center Theatre Group L.A.'s Theatre Company
 MICHAEL RITCHIE, Artistic Director EDWARD L. RADA, Managing Director
 DOUGLAS C. BAKER, Producing Director

ARTISTIC

NEEL KELLER Associate Artistic Director
 KELLEY KIRKPATRICK Associate Artistic Director
 DIANE RODRIGUEZ Associate Producer/Director of New Play Production
 PIER CARLO TALENTI Resident Dramaturg/Literary Manager
 LINDSAY ALLBAUGH Producing Associate
 MALCOLM K. DARRELL New Play Production Associate
 JOY MEADS Literary Associate
 ERIKA SELLIN Director of Casting
 MARK B. SIMON Casting Director
 ANDY CROCKER Casting Associate
 KEVIN L. CORDOVA Casting Administrator

DAVID ADJMI (FADIMAN), BURGLARS OF HAMM, JUSTIN ELLINGTON, GINA GIONFRIDDO, GOB SQUAD, SAM GOLD, DANAI GURIRA, JOE HORTUA, NICK JONES, RAJIV JOSEPH, LATINO THEATER COMPANY, DAVE MALLOY, LAURAL MEADE, JULIE MARIE MYATT (FADIMAN), DAN O'BRIEN, EVANGELINE ORDAZ, DAEL ORLANDERSMITH, WILL POWYER (FADIMAN), MATT SAX, UNIVERSES. Commissioned Artists

ZAKIYAH ALEXANDER, SHEILA CALLAGHAN, JONATHAN CENICEROZ, MATT GOULD, GRIFFIN MATTHEWS, MEG MIROSHNIK, TANYA SARACHO, JOHN SINNER CTG Writers' Workshop Members

EDUCATION AND COMMUNITY PARTNERSHIPS

LESLIE K. JOHNSON Director of Education and Community Partnerships
 DEBRA PIVER Associate Director of Education and Community Partnerships
 TRACI CHO Director of School Partnerships
 PATRICIA GARZA Senior Manager for Education and Community Partnership
 CAMILLE SCHENKMAN Educational Programs Manager
 DAN HARPER Educational Programs Associate
 ASHLEY OPSTAD Educational Programs Associate
 KELLY CHRIST Educational Communications Coordinator
 VICTOR VAZQUEZ Educational Services Coordinator
 SHANNON WINSTON Assistant to the Director of Education and Community Partnerships

MANAGEMENT AND ADMINISTRATION

NAUSICA STERGIOU General Manager (Mark Taper Forum, Kirk Douglas Theatre)
 JEFFREY UPAH General Manager (Ahmanson Theatre)
 SUZANNE HEE MAYBERRY Assistant General Manager (Mark Taper Forum)
 KATIE BRUNER SOFF Assistant General Manager (Kirk Douglas Theatre, New Play Production)
 ALANA BEIDELMAN Executive Assistant to Managing Director
 LIZ LYDIC Assistant to Producing Director
 SHANE HUDSON Yale Management Fellow
 ERIC SIMS Operations Manager (Kirk Douglas Theatre)
 TOM BURMESTER Performance Manager (Kirk Douglas Theatre)
 LAUREN BAXA Assistant Performance Manager (Kirk Douglas Theatre)
 MIKE KINDLE Facilities Assistant (Kirk Douglas Theatre)
 SONDRA MAYER Concessions Manager (Kirk Douglas Theatre)

PRODUCTION

JONATHAN BARLOW LEE Production Manager (Mark Taper Forum)
 CELESTE SANTAMASSINO Associate Production Manager (Mark Taper Forum)
 EMMETT KAISER Master Carpenter (Mark Taper Forum)
 ROBERT RUBY Master Propertyman (Mark Taper Forum)
 WILLIAM MORNER Master Electrician (Mark Taper Forum)
 BONES MALONE Master Soundman (Mark Taper Forum)
 DENNIS SEETOO Wardrobe Supervisor (Mark Taper Forum)
 RICK GEYER Hair & Make-up Supervisor (Mark Taper Forum)
 LINDA WALKER House Manager (Mark Taper Forum)

JOE HAMLIN Technical Director
 CHAD SMITH Assistant Technical Director
 SAM CRAVEN-GRIFFITHS Assistant Technical Director
 SARAH SOWELL Shop Foreperson

DAWN HOLISKI Shop Director
 ANDREW THIELS Prop Manager
 MERRIANNE NEDREBERG Prop Lead
 SARAH KRANIN Prop Shopper
 CANDICE CAIN Costume Shop Director
 BRENT M. BRUIN Workroom Supervisor
 MADELINE KELLER Costume Generalist
 SWANTJE TUOHINO Tailor
 ELIZABETH LEONARD Production Operations Manager
 JULIO A. CUELLAR Driver/Custodian
 EUGENE A. MONTEIRO II, BRIAN SLATEN Drivers
 ELLE AGHABALA Interim Production Administrator

SHAWN ANDERSON Master Carpenter (Ahmanson Theatre)
 ANDREW W. ARNOLD Flyman (Ahmanson Theatre)
 JIM BERGER Master Electrician (Ahmanson Theatre)
 STAN STEELMON Master Propertyman (Ahmanson Theatre)
 ROBERT SMITH Master Soundman (Ahmanson Theatre)
 MICHAEL GARDNER Wardrobe Supervisor (Ahmanson Theatre)
 PATRICE MIRANDA Hair Supervisor (Ahmanson Theatre)
 CHRISTINE L. COX House Manager (Ahmanson Theatre)

KRISTY WEIKEL Production Manager (Kirk Douglas Theatre)
 CHATE COLTUN Assistant Production Manager (Kirk Douglas Theatre)
 RICHARD PETERSON Master Electrician (Kirk Douglas Theatre)
 ADAM PHALEN Head Audio (Kirk Douglas Theatre)

FINANCE, INFORMATION SYSTEMS AND HUMAN RESOURCES

MICHAEL F. THOMPSON Chief Financial Officer
 MELODY MATTOS Contoller
 JANIS BOWBEER Assistant Contoller
 FELICISIMA LAPID Accounts Payable Supervisor
 DANNY LAMPSON Senior Staff Accountant
 ALEGRIA SENA Staff Accountant
 YUEN KI "ANNIE" LAW Payroll Manager
 AMEETA SHARMA Payroll Specialist
 DAVE ALTON Chief Information Officer
 STAN GRUSHESKY Director of Information Systems
 SEAN PINTO Database And Web Manager
 MANDY RATLIFF Tessitura Administrator
 JARED WATANABE Information Systems Analyst

JODY HORWITZ Director of Human Resources
 MADRIO FLEEK Interim Senior Human Resources Generalist
 JENNIFER ACHTERBERG Facilities Manager
 SINGER LEWAK, LLP Auditor
 MICHAEL C. DONALDSON, LISA A. CALLIF Legal Counsel
 GIBSON, DUNN & CRUTCHER Legal Counsel

DEVELOPMENT

YVONNE CARLSON BELL Director of Development
 PATRICK OWEN Deputy Director of Development
 NATALIE BERGESON Director of Donor Contributions
 JEAN KLING Director of Institutional Support
 LIZ LIN Director of Corporate Relations and Communications
 CHARITY WU Director of Individual Giving
 BECKY BIRDSONG Major Gifts Officer
 SANDRA EBEJR Corporate Relations Officer
 JAMIE CATALDO Corporate Relations Manager
 MANDI OR Special Events Manager
 JENNIFER RYEN Major Gifts Manager
 ERIC BROWN Communications Coordinator
 JENNIFER CHAN Development Assistant
 KATY HILTON Grant Writer
 DONALD JOLLY Donor Relations Associate for the Inner Circle
 RICK LEE Donor Contributions Supervisor
 KRISTEN LEVY-VAUGHAN Individual Giving Assistant
 ERIC SEPPALA Executive Assistant to the Development Director
 MARIA PAREDES Donor Relations Associate for The Guild
 COURTNEY ROBERTSON Institutional Giving Associate
 ERIN SCHLABACH Donor Contributions Associate
 ELIZABETH WACHTEL Major Gifts Associate

AL BERMAN, ELIZABETH DELLORUSSO, GINA EAST, LILI HERRERA, TONY LEWELLEN, JESSICA NASH, HOLLY RAMOS, NICOLE SCIPIONE, LENA THOMAS, BILL WALTON, REHA ZAMANI Donor Advisors
 ADAM BURCH, KARLA GALVEZ Donor Services Associates
 ANNE BRUNER, MURRAY E. HELTZER, MARCI MILLER, JULIE NADAL Development Volunteers

MARKETING AND COMMUNICATIONS

JIM ROYCE Director of Marketing, Communications and Sales
 NANCY HEREFORD Director of Media and Communications
 PHYLLIS MOBERLY Media and Communications Associate
 JASON MARTIN Media and Communications Associate
 SHANNON SMITH Media and Communications Assistant
 LYN COWAN Media and Communications Assistant

CHRISTOPHER KOMURO Art Director
 IRENE KANESHIRO, NISHITA DOSHI Senior Designers
 HARUKA HAYAKAWA Graphic Designer
 TERESA ENGLISH Junior Graphic Designer

ANDREW DARCEY Advertising Manager
 JIM HALLORAN Marketing Associate, Creative
 JEWEL MOORE Marketing Coordinator
 ROSE POIRIER Webmaster
 KAREN VOCK Marketing Manager
 CRAIG SCHWARTZ Production Photographer
 LARRY DEAN HARRIS Copywriter
 CINEVATIVE/MARK CIGLAR Production Video
 TOM BURMESTER, TREVOR ALGATT, KEVIN MAPP Event Video
 ALLIED LIVE: LAURA MATALON, LESLEY-ANNE STONE, KELLY ESTRELLA Advertising Agency
 LINDA STEWART, IT IS DONE COMMUNICATIONS Public Relations Consultant

TICKET SALES AND SERVICES

SHAWN ROBERTSON Ticket Sales Director
 SKYPP CABANAS Ticket Operations Coordinator
 SANDY CZUBIAK Audience and Subscriber Services Manager
 JENNIFER BAKER, CHERYL HAWKER, RICHARD RAGSDALE Audience Services Supervisors
 ALICE CHEN Audience Services Asst. Supervisor
 SAM AARON, DEBORAH REED Audience Services Sales Associates

JEREMIE ARENCIBIA, VICKI BERNDT, RJ CANTU, CARLOS D. CHAVEZ, JR., PETER COLBURN, HESPER COLOHAN, DONALD CRANDALL, GARY HOLLAND, KAY LOCHARD, JUSTINE PEREZ, LEX SAVKO, DANNY SCHMITZ, CRIS SPACCA, TRAVIS WOOD Audience Services Representatives

DANUTA SIEMAK Subscriber Services Supervisor
 CHRISTINA GUTIERREZ Subscriber Services Asst. Supervisor
 LIGIA PISTE, CELIA RIVAS Subscriber Services Senior Representatives
 IRENE CHUANG, PETER STALOCH Subscriber Services Representatives

SARAH K. GONTA Box Office Treasurer
 KISHISA ROSS, GISELE FRAZEUR Assistant Treasurers
 YULIZA BARRAZA, ANGELICA CARBAJAL, MICHAEL KEMPISTY, LEROY PAWLOWSKI, MICHAEL SALTZMAN, Box Office Staff

MICHAEL ZOLDESSY Account Sales Manager
 EILEEN ROBERTS Account Sales Associate
 KERRY KORF Priority Services Director
 SUSAN F. TULLER Priority Services Operations Manager
 JAY BURNS Priority Services Sales Manager
 PAUL CUEN Priority Services Manager

CAROLE BAXTER, RUSTY COLLINS, SUZANNE "MAGGIE" DODD, MARC "BYRON" DROTMAN, SAMANTHA ELSE, LOU GEORGE, KATE HALL, JERRY JOHNSTON, LISA KESSLER, SHEP KOSTER, ELENA MUSLAR, BRIAN "WILLIAM" PACHINGER, MATT PELFREY, EDWARD "MAX" RAZOR, JASMINE REGALA, KEN SALLEY, BOBBI LYNNE SCOTT, MICHAEL SMITH, JEFFREY STUBBLEFIELD, QUINN SULLIVAN, CANDICE WALTERS, KATHRYN TABB, DIANE WARD, JIM WATERMAN Representatives

INTERNS

NANCY AVILA, AMY BUCHWALD, KELSEY STAMPTON, CHRISTINE CROWLEY, AGNES INGRAM, MITZI MILLINER, OLIVER SAKS, CRAPHAN SEMERENKO, LESLIE STELLWAGEN, BRIAN TANKSLEY, MARISOL TORRES, EMILY VALLA, DEVON ZEREBKO.

Center Theatre Group would like to thank its exceptional staff for their ongoing commitment, dedication and extraordinary efforts.