

Kitchen Maker

Issue 12

Online



**TYPICAL 10K COST FOR A
REPLACEMENT KITCHEN**

WOODWORKING MACHINERY

Introducing the **NEW** ATACAM CNC Routers

This new range of affordable CNC Routers from ATA Engineering offers the same high quality build that you come to expect from a company that has been supplying CNC's for over 20 years, along with support and technical back up.

Standard sizes:
8 x 4, 10 x 5, 3m x 2m
(Special sizes available on request)

Standard Features:
HSD HSK Spindles, Rotary ATC, Location Pins, Tool Digitizer.

3 and 4 Axis machines in stock.

Call us today to arrange a Demonstration!

ATACAM

PRICES FROM £38,000



Castle Pocket Routers

from **ATA Engineering**



New Improved Model TSM22 Pocket Router

Model TSM22, the most popular Pocket Router in the Castle range has been re-designed with a new lift up table top to provide the following features:

- Easier and quicker access when replacing the router cutter, drill and other parts during routine servicing and repair.
- Additional safety feature which automatically disconnects the electrical supply to the Bosch motors.

This long established and widely used model continues to provide the quickest and strongest method for kitchen and bedroom carcass manufacture, retail display stands and other interior fitting applications.

Call us today to arrange a demonstration.



ATA Engineering Processes Ltd

ATA House, Unit B, Boundary Way, Hemel Hempstead, Herts, HP2 7SS

t: 01442 264411 e: sales@ataeng.com www.ataeng.com

TYPICAL 10K COST FOR A REPLACEMENT KITCHEN

TYPICAL 10K COST FOR A KITCHEN

WE are increasingly nation of renovators – and refitting an existing kitchen tops the “to-do” list for many people.

The average spend on fitting out this popular room is now £10,000 – a figure which is up by more than 10 per cent since last year.

When it comes to restyling an existing kitchen, according to a report from the online home renovation and design platform, Houzz, 57 per cent of us opt for a full renovation project as opposed to simply redecorating, or adding new furniture.

‘The kitchen has consistently remained one of the top three rooms in the house to be renovated,’ says principal economist at Houzz, Nino Sitchinava.

‘These days people often choose to stay put and make more of an effort to personalise their home,’ adds Nino.

With recent fluctuations in the property market, ongoing political turmoil caused by Brexit and the ever increasing cost of moving house, it is not altogether surprising that home improvement is an affordable and more popular choice.

Add to that the constant bombardment of ideas for home décor on the likes on Instagram and Pinterest and there is more inspiration out there ever before, as people are encouraged to work with what they already have.

It is all about maintaining a sense of stability. According to the survey, 39 per cent of those whose opinions were sought said that they are carrying out renovations rather than buying new, because they prefer to remain in the same home and another 37 per cent are doing so because they prefer to stay in the same neighbourhood.

When it comes to calculating the cost of a new kitchen, you can achieve a good end result for around £10,000 by employing a few clever tricks to make the most of available funds.

Some of the most frequently requested features include a larder, bespoke storage, statement splashbacks and breakfast cupboards.

It is important to be clear about your vision from the outset, list your priorities and non-negotiables and to be completely honest about how much you are willing to spend and those areas where you would be willing to compromise.

Generally speaking, kitchen units represent the highest outlay in any new design, followed by new appliances, worktops and installation costs, so the best advice is to divide your budget accordingly.

Never stint on the cost of installation. You can always get away with cheaper kitchen units, cabinetry and worktops provided that they are properly and expertly fitted.

Changing an existing layout – which often involves new plumbing and electrical outlets – will send the cost soaring. Staying faithful to the original design will allow for more spending elsewhere.

In the UK it is possible to purchase a whole new scheme from companies, such as B&Q, IKEA, Magnet, Wren, or Wickes, as well as from independent retailers, who can offer competitive prices.

However, the more fashionable approach these days is updating cabinet fronts and there is an increasing number of brands offering this service.

It is rarely the case that the carcass of the unit is completely worn out.

‘Even if you want to change the plan of the kitchen, you could still use the old carcasses and avoid the cost of purchasing new frames,’ says Monica Born, who is the founder of Superfront – a company which creates replacement doors for IKEA kitchen units.

‘This is good for your your wallet as well as for the planet. It is also a good way to renovate a kitchen at a cost which is much lower than that of a completely new one,’ she adds.

Funky fronts are available from companies, such as Naked





Plykea specialises in bespoke plywood doors, drawer fronts, worktops and cover panels for IKEA kitchen cabinets. A popular example from the Plykea range of replacement kitchen frontals are these Formica fronts in navy blue, with semi-recessed handles and complemented by quartz worktops.



Superfront is another company which creates replacement doors for IKEA kitchen units.

Doors, Plykea and Husk. They are an easy way to freshen up tired kitchen units.

According to design director at Naked Doors, Jayne Everett, the high demand for this cost-effective solution was launched as an offshoot of its parent company, Naked Kitchens.

'We cannot always afford to fork out for a whole new kitchen, so replacement cabinet fronts offer a brilliant solution.

'We have also witnessed a rise in whole-house renovations, where a budget has to stretch across the entire project. The home-owner might choose to keep the existing cabinets if they are of sufficiently good quality and simply update them with new doors,' adds Jayne Everett.

If you need rather more of a revamp, buying a kitchen second-hand is a great way to save money. The Used Kitchen company offers ex-retail display schemes, or those which have been taken out of private homes, for a fraction of the original cost. If the colour is unappealing, or it is looking tired, simply repaint it.

'Buying a used kitchen enables the home-owner to trade up and acquire the designer kitchen of their dreams at a cost which seems almost at unbelievably affordable – up to 70 per cent off the retail price,' says founder of the company, Looeeze Grossman.

'Generally speaking, go for cupboards, rather than drawers, as these are more expensive and reduce the number of units you really need,' explains Looeeze.

'Make better use of the cupboards you have by dividing the space within them cleverly,' recommends presenter of the Real Homes Show, Laura Crombie.

She recommends cupboard organisers, which give you twice as much storage space and are ideal for stacking plates, pans or tins, or buying a portable butcher's trolley, which can add preparation space, boost storage – and which will work wonders as a bar when you are entertaining.

If you are a keen cook, buy the best appliances you can afford, but if you are on a budget, stay away from the costly functions

and add-ons offered in the kitchen showroom.

'A double oven will be more cost effective than two single ones, whilst teaming a single oven with a combination microwave, perhaps with a grill, represents a good solution,' says product manager at the manufacturer, Caple, Luke Shipway.

'Rather than splashing out on a side by side fridge freezer, choose a 70/30 model, or an integrated larder design, as both are more affordable,' adds Mr Shipway.

Spend your money on the areas that receive the most wear each day – that is your worktops, taps, the kitchen sink and even the handles.

Go one step further by splurging on a statement tap design in on-trend colour, such as black, or in a brass finish, or an instant boiling water tap, which removes the need for a kettle, thus freeing up more work space. Alternatively splash out on a striking work surface.

Even a small area of worktop in a luxurious material as a breakfast bar will add personality whilst keeping the budget in check.

The latest durable laminates come in a range of realistic finishes and are designed to mimic wood, or stone, while composite, or engineered solutions are among the most hard-wearing options. They will come at a cost, starting from an approximately £400/ metre, but the investment will pay off.

The research from Houzz suggests that around 80 per cent of people renovating an existing kitchen use money from their savings and predicts that the cost of installing a new kitchen will rise again next year. That is why it is never too early to start cooking up new ideas for refitting your existing kitchen.



VISIT US AT WWW.KITCHEN-MAKER.CO.UK - ONLINE MAGAZINE - ISSUE 12

TYPICAL
10K COST
FOR A KITCHEN



Husk offers an affordable way to add custom elements to your kitchen with a range of fronts and countertops, which are designed to work with IKEA cabinets, but which can also be adapted if you are planning a kitchen with an alternative cabinet supplier.

VISIT US AT WWW.KITCHEN-MAKER.CO.UK - ONLINE MAGAZINE - ISSUE 12



Superfront is another company which creates replacement doors for IKEA kitchen units.

VISIT US AT WWW.KITCHEN-MAKER.CO.UK - ONLINE MAGAZINE - ISSUE 12

TYPICAL
10K COST
FOR A KITCHEN

MARTIN MACHINERY SLIDES EASILY INTO THE MARKET FOR SLIDING TABLE SAWS AS UK AGENT, DERAL CAN CONFIRM

Now's the time
for the all-rounder.

The all-rounder in the Premium Compact Class. As versatile as the materials you process.
Explore T60C now.

MARTIN



DERAL Ltd, based in Airdrie in Scotland was established in 1984. Whether you are looking for new, or used woodworking machinery, you should look no further than Deral Ltd.

Deral Ltd offers a wide range of new machinery from some of the top manufacturers in the industry.

When you purchase a new machine from Deral Ltd you can be assured that you will be acquiring reliable machinery from a well-known manufacturer in the knowledge that you will be able to benefit from Deral's full after sales support.

Over the years, Deral has steadily built on its reputation for offering high quality support and the fact that the company has consistently increased its engineering workforce over the years to meet customer demands, which enables a quicker response time.

The company's philosophy is to provide the customer with advice as to the correct machine for each and every application and the right specification, combined with comprehensive after sales support. The importance of these factors should never be underestimated.

In order to ensure that the advice given to customers is based on the latest technology, Deral's sales staff regularly attend seminars and manufacturers' product knowledge courses.

In specifying a machine for a customer, in addition to current production needs, it is essential that consideration is also given to future requirements.

Deral employs multi-skilled engineers all of whom are trained in the latest technology. Full advantage is taken of manufacturing courses to maintain a high level of expertise. Deral's company

goal is to be recognised as the preferred choice for advice and the supply of quality machinery and services.

In 1989, due to customer demand, the decision was taken to supply both new and used machinery.

Deral has taken great care in selecting the best possible partners, who provide superior technical specification on all their machines, combined with excellent after sales support.

One such manufacturer which Deral was keen to work with was the renowned German woodworking machinery manufacturer, Martin.

Martin produces a wide range of woodworking machinery, including spindle moulders, sliding table saws, planers, shapers and sanding equipment.

One machine from the Martin range that remains ever popular with Deral's mainly Scottish based clientele is the T60C sliding table saw.

This represents an ideal entry into the premium compact class. It strikes a perfect balance between price and performance, because all the key components of the circular saw T60C are designed exactly as you would expect from a Martin machine.

If a higher price does not directly reflect a higher performance, the T60C intentionally makes a "more compact" choice.

Focused engineering combined with an operating technology reduced to the basics make the T60C an excellent partner for anyone who is looking for a reasonably priced introduction to the top division of sawing. Every T60C saw promises a perfect balance between price and performance.



AWMS Engineering Ltd. (Scotland) Airdrie ML6 6JJ T +44 (0) 1236 759 059
 Deral Ltd. Machinery Services (Scotland) ML6 8QH Airdrie T +44 (0) 1236 755 350
 JJ Smith & Co Woodworking Machinery Ltd. (Northern England) GB L33 7DR Kirkby Liverpool
 MWM Markfield Woodworking Machinery Ltd. (Middle of England and South of Wales) LE3 2BQ Leicester T +44 (0) 1162 893 469
 Scott & Sargeant Woodworking Machinery Ltd. (Southern England) RH13 5QR T +44 (0) 1403 27 3000
 Electro Tech Machinery Ltd. (Republic of Ireland) BT45 7UL Moneymore T +44 (0) 2886 748 863
 HIGH-TECH MACHINERY Ltd. (Republic of Ireland) IRL 22 Dublin T +35 (0) 314 641 880

www.martin.info

VISIT US AT WWW.KITCHEN-MAKER.CO.UK - ONLINE MAGAZINE - ISSUE 12

Scoring saw unit

The unit individually sets both the scoring position left and right on the basis of the stored saw blade data fully automatically.

The operator specifies the scoring height electronically and the setting is also provided automatically.

The adjustment ranges of the two axes are clearly displayed and easy to understand. Any requisite fine adjustment is therefore child's play.

It goes without saying that all settings are stored and not lost when switching off the unit.

A special feature of the scorer is the pneumatic lifting/lowering of the scoring saw blades. As a result, the unit is activated in seconds and also quickly taken out of service again. This reduces noise and increases safety.

SafeLight

If the scorer is running, the light integrated in the table insert draws the operator's attention to the operating situation. Martin thereby provides the user with a considerable increase in safety.

ScribeMaster

The "ScribeMaster" scoring saw system allows the scoring width to be set easily on the stationary scoring saw unit. Fiddling around with shims between the scoring saw blades is therefore a thing of the past.

Cross-cut table

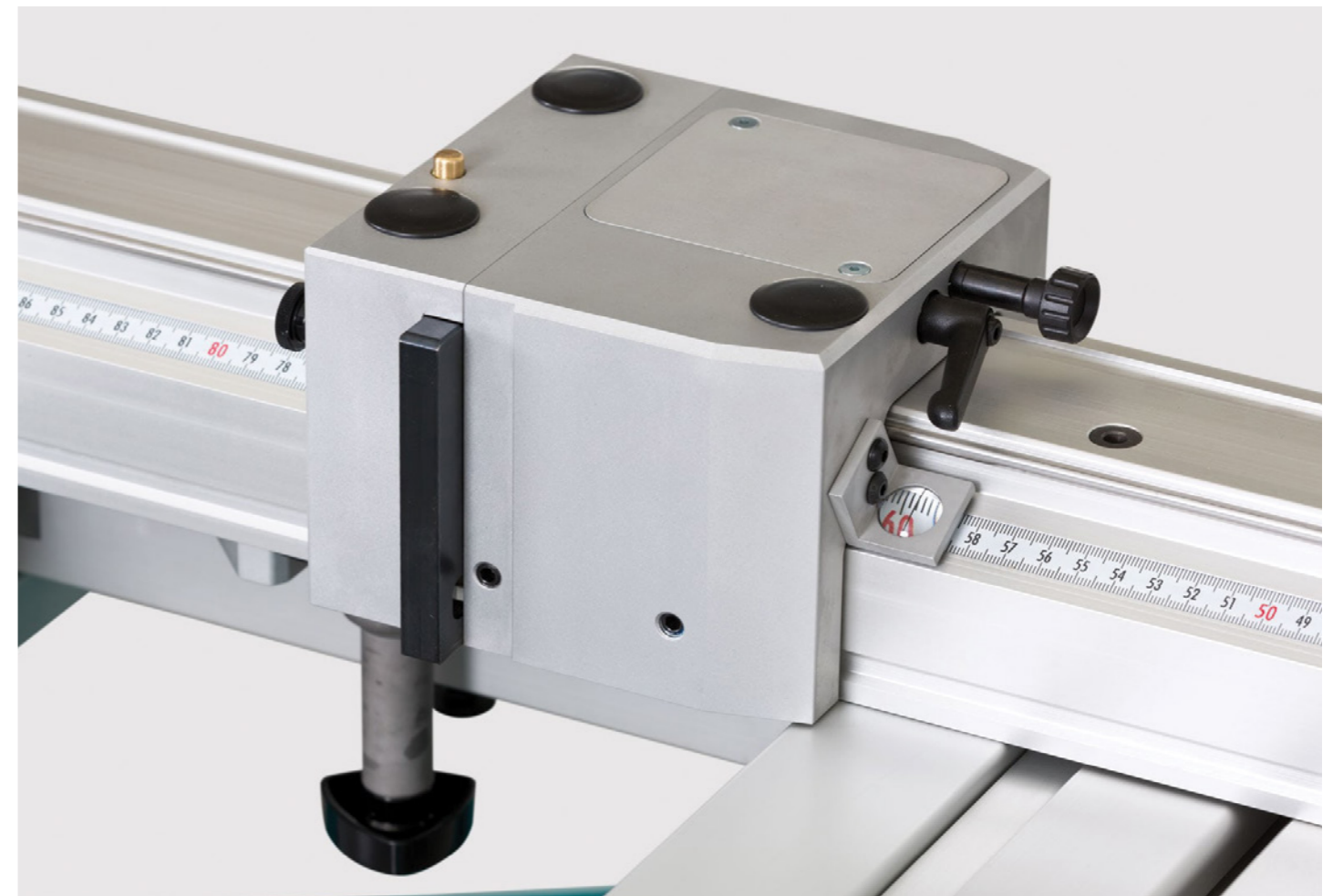
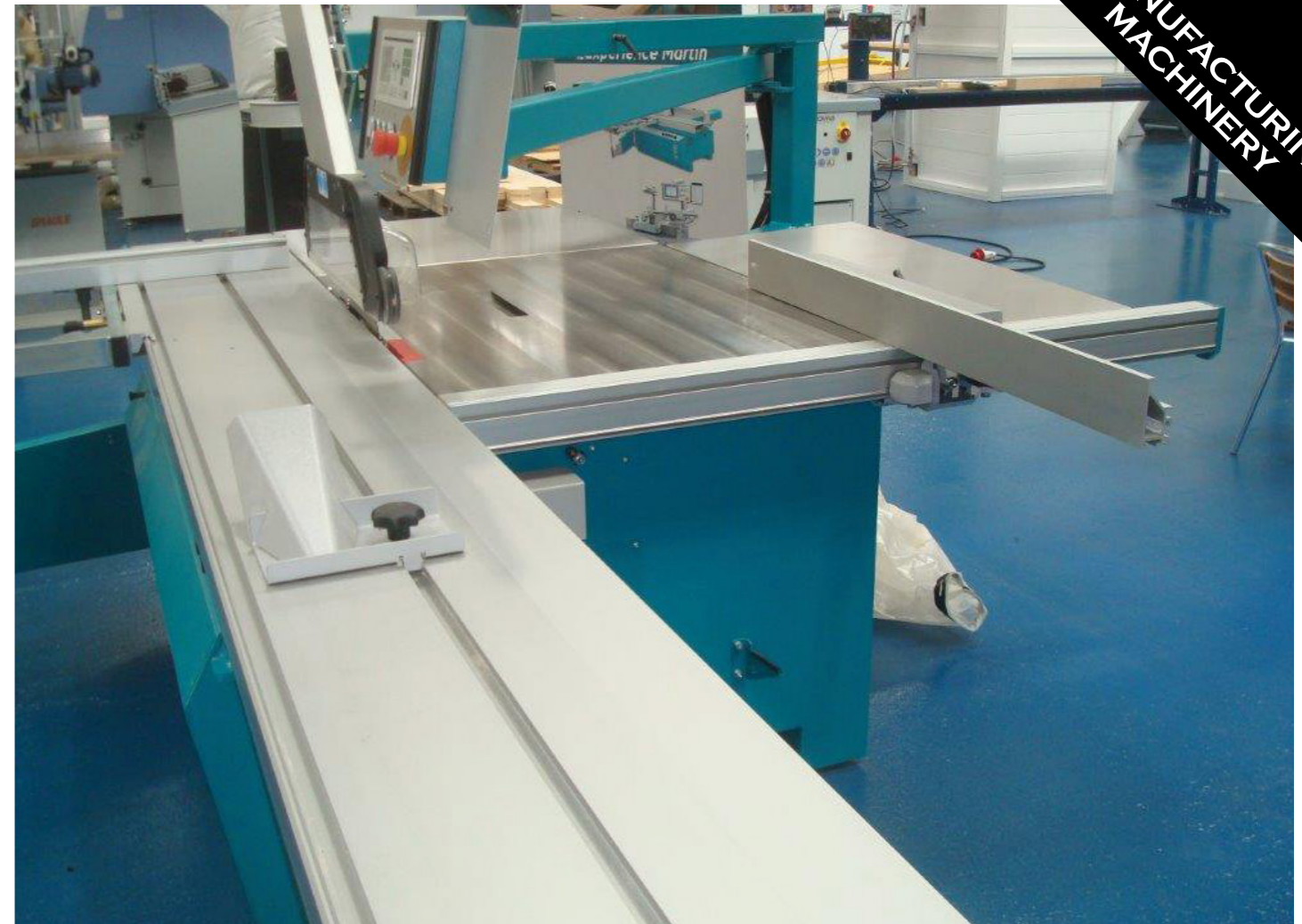
The sturdy cross-cut table is part of the basic equipment featured on the

T60A saw. The cross-cut fence can be used in either the front, or rear position of the cross-cut table with just a simple movement being required.

The large angle scale integrated in the table allows precise mitre cuts between 0 deg and 50 deg to be executed by simply turning the cross-cut fence.

The T60C sliding table saw represents excellent value for money and it is therefore no surprise that Deral's customers consider it to be the machine of choice for a wide range of applications in a joinery workshop.

Want to find out more?
Visit www.martin.info or www.deral.co.uk



HOMAG SELECTED BY ROK EUROPEAN KITCHENS

ROK European Kitchens is a new venture which brings together a dynamic team with combined experience of over 100 years in the UK contract market.

This positions ROK at the forefront of contemporary kitchen specification and design.

The company works closely with architects, designers, developers and house builders to deliver high quality products and exceptional service.

'From the start, our aim was to create a state-of-the-art production facility in Essex,' explains ROK's managing director, John White.

'Although it is a new company, the senior team has a vast amount of experience in the industry,' he adds.

'Our aim was to create a manufacturing facility that would provide us with a mix of automation, for speed and efficiency, blended with the flexibility of traditional craftsmen's skills.

The search for an equipment partner originally focused on a nesting machine. We looked at two suppliers, with both of whom

we had had previous dealings. Initially, we felt that either of these two companies had the machinery that would do the job.

'We always wanted Homag equipment, but we didn't think we could afford it. However, in actual fact, the deal Homag offered us was better than that of the other supplier.

'So, having seen the machinery in action at the W18 exhibition at the NEC in Birmingham, we work closely with the Homag area manager, Charles Smith and the Homag UK team to specify the machinery that would best suit our needs,' says Mr White.

The ideal manufacturing cell

'The goal was to create the ideal manufacturing cell to meet our development plans. This included a beam saw, a CNC machining centre, an edge-bander, a drilling and dowel inserter and a carcass clamp.

'The package Homag put together included a Sawteq B-300 beam saw with MagiCut software, a Centateq P-110 (four-axis) CNC, the Edgeteq S-380 with the airTec edging system, a Drillteq D-500 drilling and dowel-inserting machine and a Cabteq S-250 carcass clamp,' explains Mr White.

Panel-dividing saw – the Homag Sawteq B-300

The Sawteq B-300 offers high performance in a compact space. This panel dividing saw is suitable for producing in Batch Size 1, as well as in smaller series and is ready for connection to automatic horizontal storage systems.

Designed for smooth material flow and precise logistics practice, it is also ideal for networked production processes.

The saw has been designed to meet future expansion requirements; these can be achieved thanks to the many options that can be retro-fitted.

With a dimensionally accurate program fence and a rugged pressure beam, the B-300 produces a first-class quality cut each and every time. By way of

shortening cycle times, it features a central side pressure device, which is integrated directly in the saw carriage.

Centateq P-110 CNC processing centre

This Centateq P-110 CNC series offers high levels of performance and versatility to small- and medium-sized carpentry and joinery companies. It is based on compact technology, a reduced installation area and operation directly at the machine.

Options include three-, four- and five-axis models for the processing of kitchen, office and solid wood furniture, as well as for the construction of stairs, windows and doors.

The three- and four-axis models are ideal for profiling furniture fronts, routing lock cases, completing mitre cuts and cutting recesses for connecting fittings.

These machines feature Homag's high-speed drilling technology with patented clamping of the spindle and quick-change system for tools. This gives the Centateq P-110 maintenance-free precise drilling and fast cycles.



Cabteq S-250 Case Clamp – a robust assembly aide for cleanly pressed carcass furniture.



In addition, there is free access to the machine from all sides due to the 'bumper safety technology' enabling more efficient utilisation of space.

Edgeteq S-380 1650 E edge-bander

Even in its basic equipment configuration, this model offers a high level of automation and simple processing of several radii as standard.

The base version is equipped with a joint trimming unit, a precise Quickmelt gluing unit, a two-motor snipping unit, a multi-stage trimming unit and a profile trimming unit. A multi-stage scraper, a glue-joint scraper and a buffing unit ensure a perfect finish.

The multi-stage trimming and scraper units provide the optimum radius and, consequently the very best results for frequently changing applications.

The Edgeteq S-380 has the option for airTec zero joint technology, an essential feature for ROK Kitchens, which has used this method of edging since its inception.

NC-drilling and dowel-inserting machine – Drilltec D-500

With a heavy and sturdy machine bed made of Sorb Tech, the vibration-free Drilltec D-500 delivers accurate drill holes and precise positioning of dowels. It also features vertical drilling in the border area, making it ideal for the connection of fittings, or hinge drill holes.

Work pieces are held firmly via the use of up to eight clamping cylinders, variable to length and thickness. In addition, the adjustable centre stop allows for flexible handling of work pieces, thereby ensuring an optimum two-field operation.

Case clamp Cabteq S-250

When it comes to building kitchens, cleanly pressed cabinets are a key sign of quality in pre-assembled furniture.

The Cabteq S-250 is a robust assembly aid for pressing of carcass furniture. It has two speeds: "approach" (rapid) and "pressing" (slower).

At the touch of a button, the plates move from their starting position to the pressing position at rapid speed just before hitting the cabinet.

The speed then automatically switches to a lower pressing speed. This dual speed function allows for more cabinets to be pressed/shift. Each cabinet is pressed centrally and over the entire surface giving a solid, square finish.

Attractive finance deal removes financial constraints

'Being a new company, cash flow is extremely important and when Homag offered us an attractive finance package through Homag Finance we jumped at the chance,' says John White.

'The five-year deal will enable us to focus on building the business without having to worry about the financial commitment. We estimate

that the equipment will have paid for itself well within that time frame.

'The installation was spread over a four-week period and went extremely smoothly.

'Prior to the machines arriving, we sent some of our operators to Homag UK for training.

'Homag then gave our team onsite training to ensure that we would get the most out of the machines: it certainly proved to be a very comprehensive package,' enthuses John White.

'The set-up we have is really efficient and we are confident that it will prove to be an extremely productive manufacturing cell in the months and in the years to come,' says John White.

German engineering excellence

'Homag's heritage gives us tremendous peace of mind. The Germans are renowned for producing well-thought out, technically-advanced and totally reliable machinery. These factors are extremely valuable to us as a business,' says John White.

'With this re-assurance we can forge ahead safe in the knowledge that our manufacturing capability is not only cutting-

edge, but also 100 per cent dependable.

'From the operators' point of view, these new machines are very intuitive and so it hasn't taken them much time to master the day-to-day running of the equipment.

'Obviously, as we gain more experience, we will extract even more out of the machines,' concludes John.

Want to find out more?
Visit www.homag.com



Edgeteq S-380 – high levels of automation with the option for airTec zero joint technology.

BY THE NUMBERS

45,000+

ACTIVE USERS WORLDWIDE

According to the latest CMA Benchmark Study, more woodworkers choose our products than any other software system. In fact, it's not even close.

35

HOW LONG WE'VE BEEN DEVELOPING SOFTWARE

We've learned a thing or two since we started offering software for woodworkers in 1983.

97%

SATISFACTION WITH OUR SUPPORT

Whether via phone, email, support portal, or our online forums, our technicians are here to help.

117,950,504

DATA ITEMS TESTED EVERY WEEK

We run our software through test after rigorous test to ensure that we only release the most stable products to our customers.

85 / 11

COUNTRIES/LANGUAGES

Our software can be found all over the world and it's available in 11 languages.



We may have only a couple of days to do an impossible job, but ALPHACAM makes it possible.

Jason Szukalski
Director – Anarchy Ltd



Without CABINET VISION, we'd probably need three additional members of staff to achieve what we do.

Ruth Lovelock
Hetherington Newman



ALPHACAM & CABINET VISION

THE WORLD'S #1 SOFTWARE SOLUTIONS FOR THE WOODWORKING INDUSTRY

ALPHACAM & CABINET VISION offer the complete engineering solution for the woodworking industry. Our strength is in providing innovative solutions that can grow with your company.

ALPHACAM provides unparalleled ease of use, process automation, and sophisticated toolpath generation, seamlessly integrating both 2D and multi-axis cutting strategies which can be applied to any type of component.

CABINET VISION is capable of custom cabinet and room design, photo realistic rendering, material optimisation, bidding and costing, cutlists and bill of materials. Combined with the powerful Screen to Machine Center, it can automatically create machine ready G-Code for your CNC machinery.

Alphacam.com | CabinetVision.com



HexagonMI.com

FULL KITCHEN PLANS COMPLETED IN CABINET VISION IN JUST 20 MINUTES

Stage 1: Designing a 20-unit kitchen for a developer took a matter of minutes with Cabinet Vision.

Stage 2: The material was ordered at 4.55pm the same day.

Stage 3: The following day it was cut, drilled, edged, assembled and delivered by 12.30pm

'I DID that simply to prove a point,' says managing director and owner of Chris Sharp Cabinets Ltd, Paul Kettleborough.

'I wanted to know just how quickly we could produce a kitchen. Although we had to machine multiple panels, our CNC machine was running at up to 80m/min,' says Paul.

Employing a dozen people at the company's 15,000ft² workshop and showroom in Lincolnshire, the company generally produces two kitchens/week for end-user consumers, with a number of others for property developers.

Having recently invested in Cabinet Vision software to complement the company's Alphacam package, there is now the capacity for designing and manufacturing around 20 a week.

With a long-standing history of making both softwood and hardwood furniture, the company decided that there was a need to diversify, as cheap imports began to have an effect on business and they moved into the purely bespoke kitchen market.

Three years ago, Paul bought the company from Chris Sharp, having worked there for over 20 years and he decided to concentrate solely on kitchens.

Alphacam had been the main software for furniture production for many years, and the company continued to use it to design and manufacture the cabinetry components for their kitchens, which Paul admitted was not the optimum tool for casework assemblies.

'It was taking a long time to program our three-axis SCM Ergon machine tool,' says Paul.

'We'd have a standard 600mm base unit with the holes and tool-paths - but if a customer wanted a 550mm unit, for instance, I'd have to take it down by 50mm.

'So in time, my Alphacam program had up to 150 different

units. If a kitchen contained 600mm, 500mm and 400mm units, I'd put them on a separate sheet and nest them through Alphacam, which was a long-winded process when compared to Cabinet Vision, because it's not optimised for that type of work,' explains Paul.

So, the natural progression was to invest in Cabinet Vision for carcass work.

Design manager, James Graves now receives customers' orders as an ArtCAD drawing from their external designer and imports it into Cabinet Vision.

'As I've got a library of the 60 or so cabinets that we use regularly, I create the rooms by dragging and dropping the units into the project and then editing them,' says James Graves.

'The ArtCAD file is often just a plan with dimensions on, usually in increments of 50mm, but with Cabinet Vision's parametric capability and the parameters already set up, if I drop a 600mm unit in and change it to 587mm, all the relevant sizes and joins are changed accordingly. Each one literally takes just seconds and I can complete a full kitchen plan in around 20 minutes,' proclaims James.

Being able to customise each unit is particularly valuable when he is working with the company's range of handle-less cabinets.

'We prefer to have these carcass-pressed, so we can choose that the jointing technique is all dowelled rather than KD-fitted. However, I can have KD fittings, if required and I have full control over their location and orientation.

'I can make all fittings on shelves up to a certain height face down and the ones above it face up, so when the customer looks at it, they don't see where the fixing joints are,' explains James.

Cabinet Vision's powerful communication tool with the CNC nesting machine, S2M (Screen-To-Machine), sends the NC code to the Ergon, which includes all the cutting and drilling instructions for the machine.

Alphacam comes into play with the handle-less units, notching out the areas on the side of the panels for the profile to fit into, by sending machining code to the Homag Weeke CNC.

Paul Kettleborough explains that operation can't be performed on the Ergon.

'As it's notched out, we wouldn't be able to put the panel through the linear movement on an edge-bander...it just wouldn't accept it. So we put it through as a rectangular piece, which is edge-banded on one edge and, as it's neatly notched out for the profile on the Homag machine, the edge-band stays intact. Alphacam is also used to produce any curved, complex shaped and hardwood doors. All these programs are carried out solely with it,' explains Paul.

Alphacam also indirectly drives a Koch machine tool, by working in tandem with Cabinet Vision

'As the Cabinet Vision files go to Screen-To-Machine, it stores the programs in Alphacam, along with the position of the holes that need to be drilled horizontally.

'All holes, both on the main faces of the panels and the edges, are designed and placed there by Cabinet Vision.. I pull up the nested program in Alphacam and those on the face are drilled by the Ergon.

'However, I can also get the same file in a different

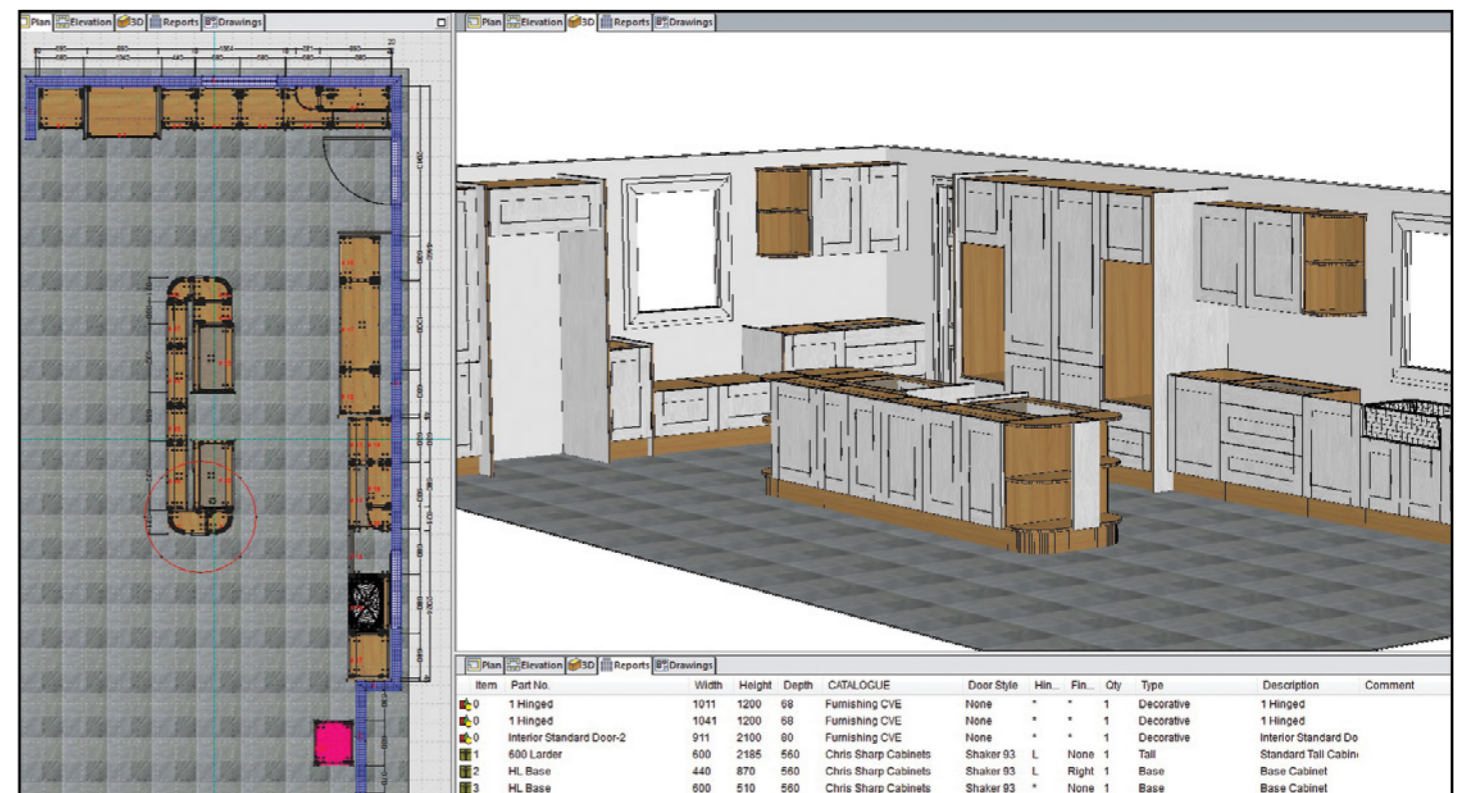
format, which gives the hole sequence for that individual panel and the horizontal holes are drilled on the Koch machine,' says Paul.

In conclusion James Graves says that another advantage of using Cabinet Vision is that it means that the company can give an accurate price for the job.

'All materials and their price are in the system, so I can see at a glance how much each unit costs and the price for the whole kitchen, right down to the screws.

'We can come in with a bottom-line figure to stay competitive. It's a bespoke kitchen, but not at a bespoke price,' says James Graves speaking on behalf of the company he works for, Chris Sharp Cabinets Ltd.

Want to find out more?
Visit www.alphacam.com or
www.cabinetvision.com



BIESSE GROUP TO HOST THE FURNITURE MAKER'S COMPANY'S FORTHCOMING MANUFACTURING GUILD MARK OPEN DAY

BRITISH furnishing manufacturers interested in finding out about the marketing and operational benefits of holding the Manufacturing Guild Mark are encouraged to attend a free open day this October at Biesse Group UK's Daventry headquarters.

Awarded by The Furniture Makers' Company and in partnership with Biesse and Lectra, the Manufacturing Guild Mark has been

the mark of excellence, distinguishing Britain's top furnishing manufacturers, since 1993.

The mark is awarded to manufacturers on completion of a successful independent audit, performed by FIRA International, which assesses high standards across all aspects of the business, including manufacturing, design, product quality, marketing,

finance, commitment to training, employment conditions and sustainability.

Manufacturers of any size operating within the wider furnishing industry, including furniture, beds, upholstery, kitchens, carpets and flooring, are eligible to apply for the mark.

Currently 19 British manufacturers hold the Manufacturing Guild Mark, including Bisley, Delcor, Ercol, Gratnells, Harrison Spinks, Herman Miller, Jay-Be and Wren Kitchens.

The open day is taking place on Thursday October 24th 2019 and will include an overview of The Furniture Maker's Company and what is involved in the Manufacturing Guild Mark audit process.

Visitors will also have the opportunity to meet an existing Manufacturing Guild Mark holder and find out first-hand the positive promotional impact the mark has had on their



business and how the audit process has enabled them to improve operationally and embrace change at the business.

'Holding a Manufacturing Guild Mark provides a great platform for any company involved in the UK furniture industry to showcase their business, hence why we have committed to supporting this initiative and we look forward to welcoming everyone to the event,' says Biesse Group UK chief executive officer, Steve Bulmer.

'We promote the fact that we hold this award in our stores, on our website and in our marketing communications,' says managing director of Delcor, Rick Petini.

'We want our customers to know that we have this seal of approval. It's a guarantee for them that we are a British company, that does things right,' adds Mr Petini.

'The Manufacturing Guild Mark gives us recognition. It gives our customers more confidence in our brand, ensures them that they are getting the best quality product, the best service and that we will be there to support them today, tomorrow and in the future,' says UK operations director at Herman Miller, Charles Winn-Jones.

'The open day will also include a tour around Biesse's state-of-the-art tech centre, during which delegates will get to see demonstrations of Biesse machinery.'

Interested parties can choose to attend either a morning, or afternoon session, with a working lunch in between, giving delegates an opportunity to network.

'We are holding this event to explain the benefits to potential holders of achieving the coveted Manufacturing Guild Mark - an award that celebrates the often unsung capabilities of great British furnishing manufacturing companies, big and small, at a time when a receptive audience is growing in the UK,' says Manufacturing Guild Mark chairman, Ben Burbidge.

'We'd like to thank co-partner, Biesse for hosting the event in their headquarters - the team share our passion of promoting exceptional British manufacturers and we're very grateful for their support,' adds Mr Burbidge.

Companies interested in attending one of the free open day sessions can register via Eventbrite - <http://bit.ly/MGMopenday>



Want to find out more?
Email Sheena Kotecha at guildmarks@furnituremakers.org.uk
Want to find out more on the Furniture Makers Guild?
Email marketing@furnituremakers.org.uk
Want to find out more about Biesse?
Visit www.biesse.com

TITUS T-TYPE HINGES: SETTING NEW STANDARDS IN TERMS OF PERFORMANCE, VERSATILITY & CONVENIENCE

THE new T-type hinges from cabinet hardware expert, Titus reliably deliver the soft closing action preferred by end users, whilst also offering decisive advantages for kitchen furniture manufacturers.

They feature the company's three-way snap-on mounting, which makes them fast and easy to install. They can be used with a wide range of door thicknesses and types and they are tolerant of misalignment and drilling variations. In addition, they have passed FIRA tests for BS 6222-2-2009, Test Level H.

T-type hinges feature the renowned Titus Confident Close action. This is the consumer-preferred reliable and consistent soft-closing action characterised by late-start deceleration and quiet landing in the last stage of closing, as the door reaches the cabinet side.

The proprietary Titus multi-purpose integrated damping technology is transversally positioned in the hinge cup, which ensures dependable life-long damping with no bounce-back.

The dampers used in these innovative hinges are single-direction hydraulic types that are fully sealed to eliminate the possibility of oil leakage.

They are easy to adjust, which ensures that consistent performance can be achieved on doors with a wide range of different dimensions and weights.

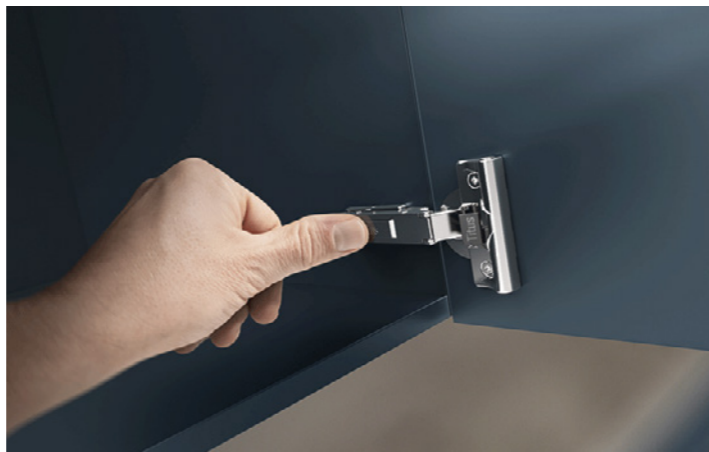
The unique three-way tool-less snap-on mounting plate used in T-type hinges offers intuitive hinge-to-plate mounting in three directions: the hinge can be presented to the plate from the front, from the back, or from the top and, with just one sharp tap of the hand, it will click easily and positively into place.

This greatly simplifies door installation especially with tall doors that need four or even five hinges. The unique design of the mounting plate also re-inforces stability and rigidity, whilst maintaining smooth hinge operation.

Another key benefit of T-type hinges is that they need only shallow drillings for the hinge cups, which means that they can be used on doors with thicknesses from 15mm-26mm.

Titus T-type hinges are available in standard and pie-cut versions. They can be supplied with cross-mounting or linear mounting plates that simplify both hinge alignment and hinge-to-plate attachment.

Want to find out more? Visit www.fitusplus.com



OVVO
FOR DRILLING

THE FUTURE OF CONNEC



NOTION

New invisible push-in connector featuring two self-locking-dowel shaped "pins" with 32mm centres that use inbuilt tolerance of the housing to deliver superior joint strength.

Features & Benefits:

- Dowel-shaped "pins" are set 32mm apart allowing easy integration into any current drilling operations
- Unique design of "pins" allows easy insertion by end user
- This, in turn, allows product to be shipped without parts inserted
- The "bridge" between the pins automatically sets a consistent depth across the joint, delivering consistent tolerance
- Suitable for use in boards $\geq 15\text{mm}$ thickness
- Available in Permanent and Releasable options
- Part of the Interzum 2019 'High Quality Product' award-winning V-1230 Series

PERMANENT



Featuring two end 'shoulders' that eliminate any sideward movement and deliver a secure joint when simply pushed and click into place, the permanent connector is ideal for use in 70mm stretchers in cabinet assembly, saving time and money.

Push>Click>Connect

RELEASABLE



Featuring a ramped design that leads the connection to 'wedge' securely as it is slid into place, the releasable is ideal for RTA furniture assembly.

Slide to Connect

www.ovvotech.com
sales@ovvotech.com
+353 42 937 0070



MADE TO SUIT EVERY SIZE AND STYLE OF KITCHEN DESIGN

WITH the innovative Legrabox drawer system from leading furniture fittings provider, Blum, kitchen furniture manufacturers will benefit from a variety of design characteristics to give customers complete satisfaction from start to finish.

Combining perfect motion with heavy loads and ease of installation, Blum's Legrabox suits every size and style of kitchen design, as well as multi-functional spaces, open-plan living and more...

Blum will "Think Differently" with its Legrabox drawer system, which combines clear contours with parallel drawer side design and accent lines.

Drawer sides are straight, both inside and out and measure just 12.8mm. Individual components are fully co-ordinated to create a uniform look.

Added benefits include a new runner system with quality of motion and a full load capacity of 40kg or 70kg, depending on width, even when fully extended.

Branding is also an integral part of the Legrabox design and drawer sides can be printed with your brand name, giving you the opportunity to market and brand your business like never before.

Naturally, cover caps can also be used as before. Customers and retailers alike will also appreciate the life-time guarantee that comes with Blum's Legrabox.

In keeping with the current trend for high fronts, Legrabox also comes with a new type of front fixing bracket that guarantees maximum stability when opening and closing drawers and pull-outs.

As a leading manufacturer, you can also stay one step ahead of the trends with the Legrabox free design version, which allows for high fronted pull-outs to be customised in anything from glass or wood to leather, or stone.

Blum has also introduced Blumotion S – one solution for three technologies. The new Blumotion S for Legrabox and Movento gives the flexibility of three different motion technologies with a single runner, along with the satisfaction of soft-close Blumotion.

Legrabox opens up a range of design opportunities for manufacturers, as it can be used in any application in any part of the home.

It has won several international awards and can be used for all kinds of different applications, from front fixing high fronts and low, heavy loads to utensil drawers, Space Tower pull-outs, plate drawers, bottle holders and spice racks.

'We know that manufacturers are always on the hunt for the next big thing,' says Blum UK marketing manager, Lisa Robinson.

'Our innovative Legrabox system provides so many options which are practical, functional and stylish – the ultimate solution for manufacturers, retailers and for manufacturers, retailers and home-makers alike,' she adds.

According to Lisa Robinson, anyone who is in the business of manufacturing or installing new kitchens is firmly advised to apply the adage "Think Blum. Think Differently".

Want to find out more? Visit www.blum.com



VISIT US AT WWW.KITCHEN-MAKER.CO.UK - ONLINE MAGAZINE - ISSUE 12



VISIT US AT WWW.KITCHEN-MAKER.CO.UK - ONLINE MAGAZINE - ISSUE 12

The Woodwork Dust Control Co Ltd

Leaders in Dust Control Technology

A Complete Wood Waste Extraction Service to all Timber Industries

- ★ Design, Manufacture, Installation
- ★ Large hopper filters, fans, cyclones
- ★ Small bag filters, rigid ductwork, flexible hose
- ★ LEV COSHH testing, assessment, service
- ★ EWI-THERM Wood burning stoves
- ★ Fast nationwide service



Contact us for our FREE product catalogue:

Tel: 01844 238833 Fax: 01844 238899

Email: enquiries@woodworkdustcontrol.co.uk

Web: www.woodworkdustcontrol.co.uk

