

Kitedrive

A Secure Alternative to Dropbox

By Indir Avdagic
Information Security Office
10/10/2013



HARVARD

School of Engineering
and Applied Sciences

Objectives

- What are we using now?
- What are we trying to solve?
- What is Kitedrive?
- Why is it more secure?
- How can YOU use it?
- Demo & Closing remarks
- Kitedrive resources



HARVARD

School of Engineering
and Applied Sciences

Current Solutions

- **SEAS**
 - Secure File Transfer: e-mail and SharePoint plug-ins
 - Google Drive via g.harvard.edu
- **Non-SEAS** (publicly available cloud solutions)
 - Dropbox
 - SkyDrive
 - Google Drive



HARVARD

School of Engineering
and Applied Sciences

What are we trying to solve?

- Simplify secure data-sharing
- Improve data sharing accountability
- Implement uniform secure file sharing across SEAS.



HARVARD

School of Engineering
and Applied Sciences

SEAS Solution: Kitedrive

- A more secure alternative to Dropbox, SkyDrive, and Google Drive.
- A collaboration tool on the web that works in real time.
- Provided through Accellion.



HARVARD

School of Engineering
and Applied Sciences

Why is Kitedrive more *Secure*?

- SEAS owns the **physical server** where data is stored.
 - Cloud services such as Google Drive, SkyDrive and Dropbox store data in varied locations outside SEAS domain.
- Data is **encrypted**.
 - Even Sys. Admin cannot see the data.



HARVARD

School of Engineering
and Applied Sciences

Where to download Kitedrive?

- You need to download Kitedrive client for you computer or smartphone at:

<http://www.kitedrive.com/download>

Download kitedrive

Desktop Sync

Download kitedrive for your Windows PC: [DOWNLOAD PC INSTALLER](#)

Download kitedrive for your MAC: [DOWNLOAD MAC INSTALLER](#)

(You must be logged in to your kitedrive account before you can download the installer)

Mobile Access

Download the Accellion Mobile App and access your kitedrive from any iOS, Android or Blackberry device.



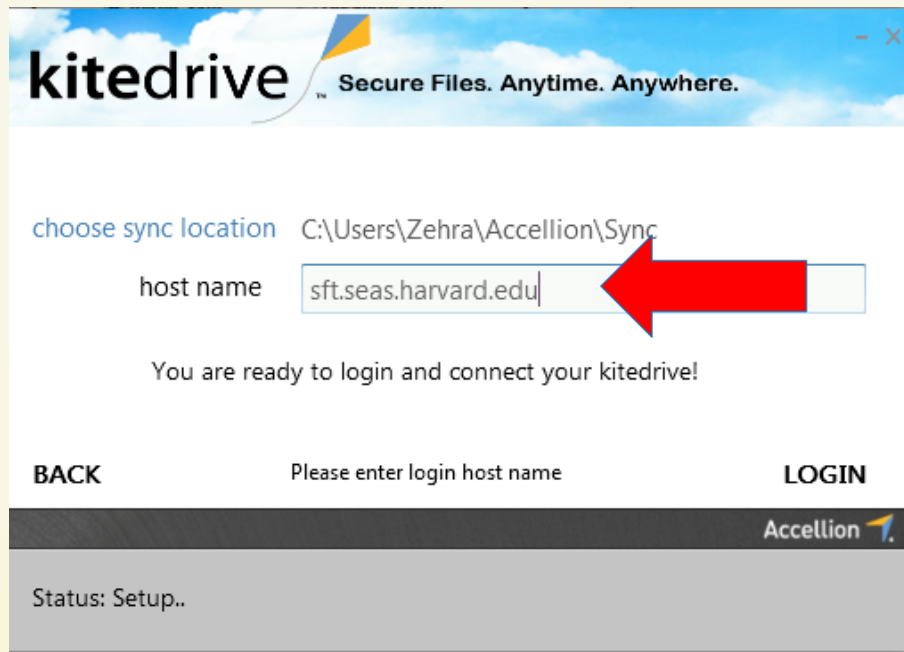
HARVARD

School of Engineering
and Applied Sciences

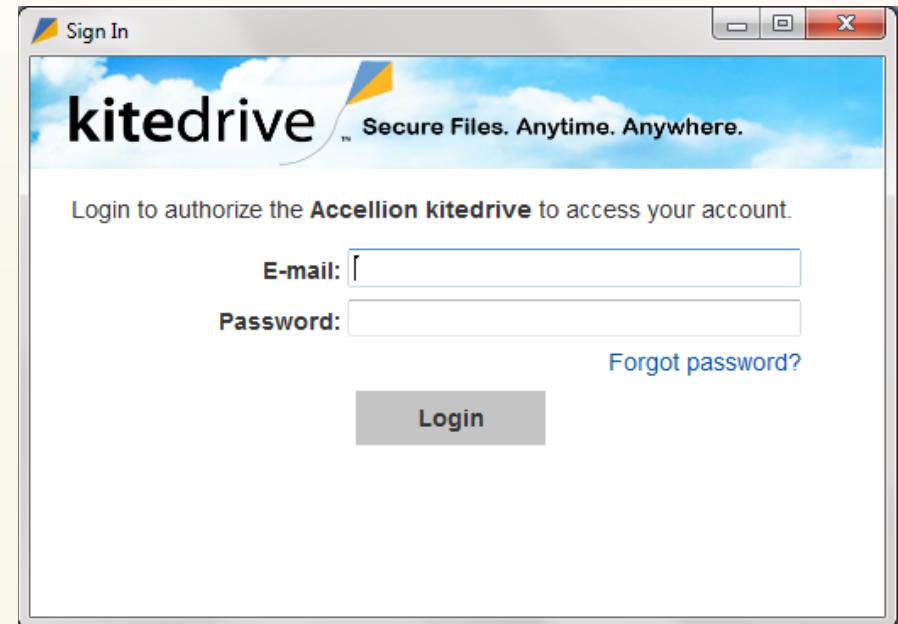
Downloading Kitedrive to Desktop

Download Kitedrive:

<http://www.kitedrive.com/download>



The screenshot shows the Kitedrive setup interface. At the top, the Kitedrive logo and tagline "Secure Files. Anytime. Anywhere." are visible. Below this, the "choose sync location" is set to "C:\Users\Zehra\Accellion\Sync". The "host name" field contains "sft.seas.harvard.edu" and is highlighted with a red arrow. A message below the fields states "You are ready to login and connect your kitedrive!". At the bottom, there are "BACK" and "LOGIN" buttons, and a status bar at the very bottom shows "Status: Setup..".



The screenshot shows the Kitedrive "Sign In" window. The title bar says "Sign In". The Kitedrive logo and tagline "Secure Files. Anytime. Anywhere." are at the top. The main text says "Login to authorize the Accellion kitedrive to access your account." Below this are two input fields: "E-mail:" and "Password:". A "Forgot password?" link is to the right of the password field. A "Login" button is centered below the fields.

Creates a folder where you can drag and drop files.

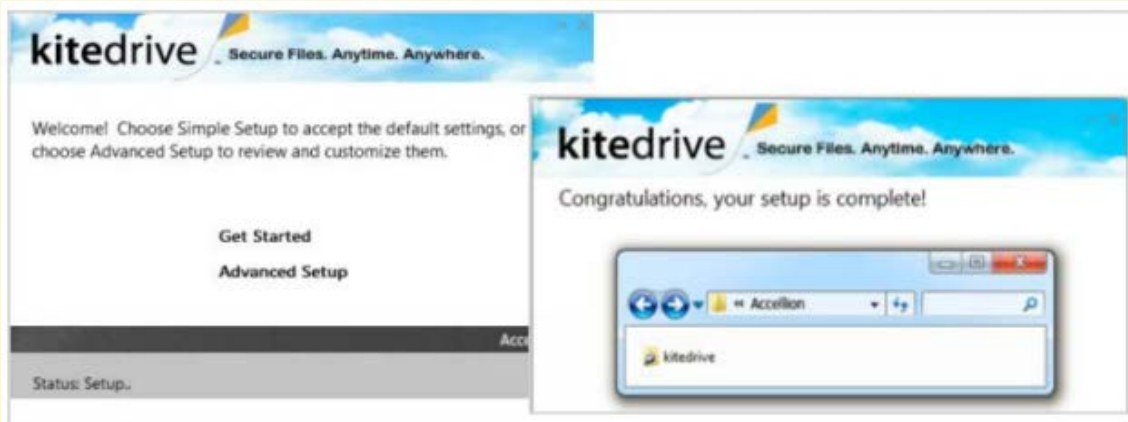


HARVARD

School of Engineering
and Applied Sciences

Setting Up Kitedrive

1. From your desktop, click **Accellion Kitedrive Setup.exe**
 - For **Mac** users, click Accellion kitedrive Setup.dmg.
2. The setup wizard guides you through the process:
 - **Get Started**: accept the default settings.
 - **Advanced Setup**: review and customize the settings.



*As long as you are connected, kitedrive will continuously sync your files to the Accellion server.



HARVARD

School of Engineering
and Applied Sciences

How to Use Kitedrive?

- You can access files by:
 - Logging on to your computer
 - A web browser
 - Using the Accellion Mobile Apps
- Kitedrive automatically syncs files as long as you are connected.
 - You always have the most recent version of the file on your local kitedrive. You can see the version history from the web interface.

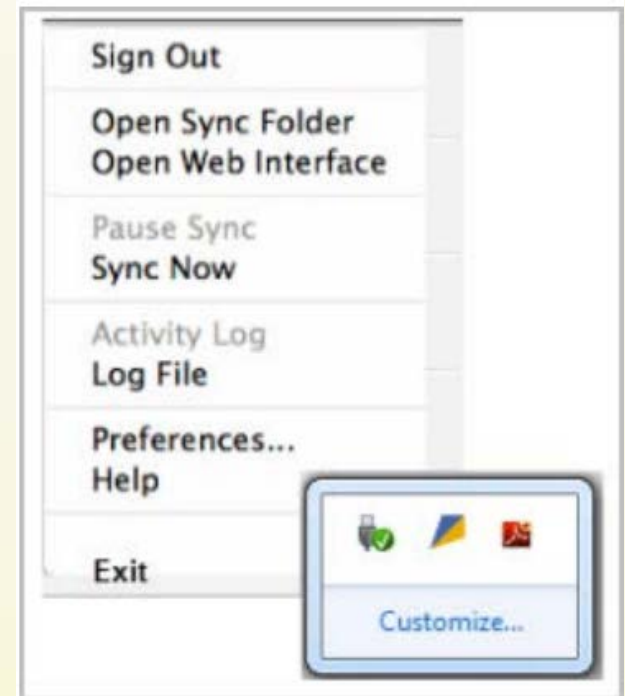


HARVARD

School of Engineering
and Applied Sciences

The Kitedrive Menu

- Find the kitedrive icon in your menu bar.
- From the menu, you can:
 - sync
 - pause/resume sync
 - open Accellion on the web
 - change preferences

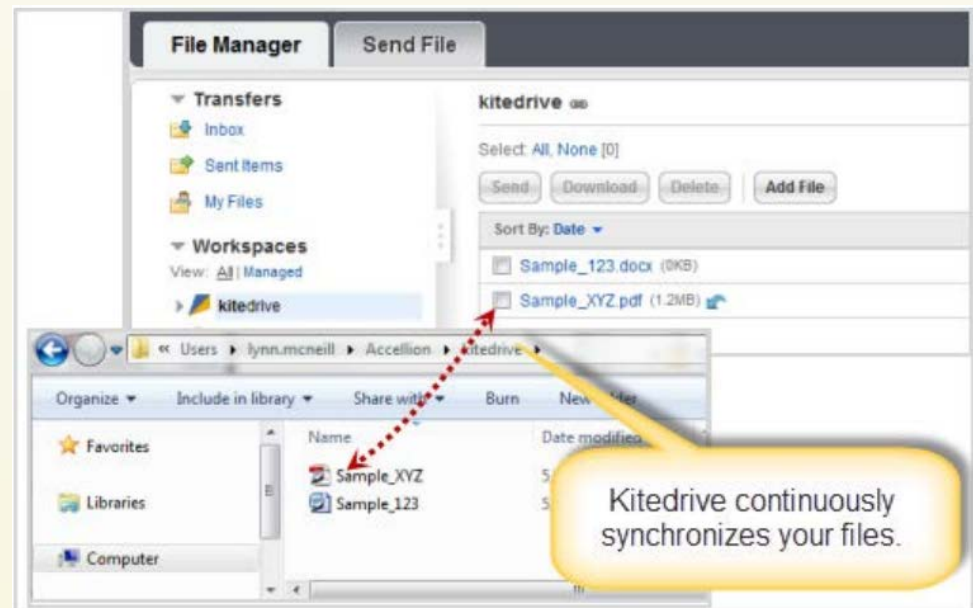


HARVARD

School of Engineering
and Applied Sciences

Accessing Files from any Computer

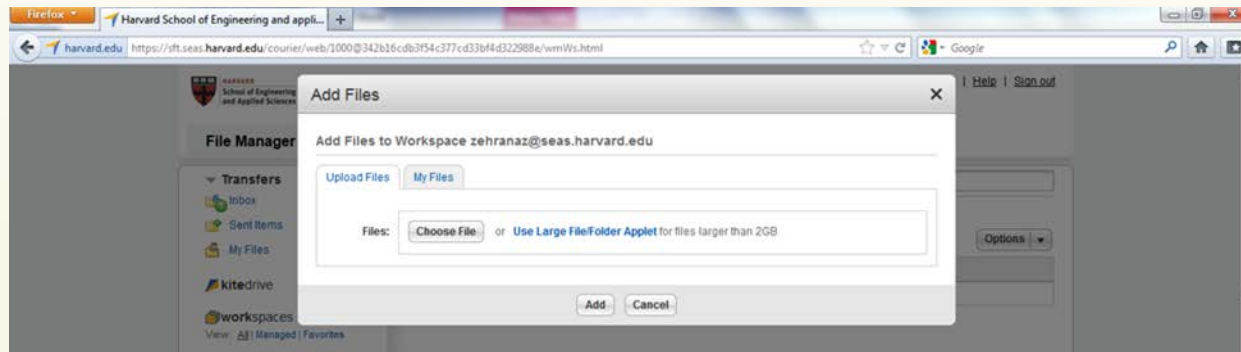
1. From the **kitedrive** menu, select **Open sync** folder.
2. Drag a file into your kitedrive.
3. Open the file, and then make the necessary changes.



HARVARD

School of Engineering
and Applied Sciences

Accessing Files from the Web



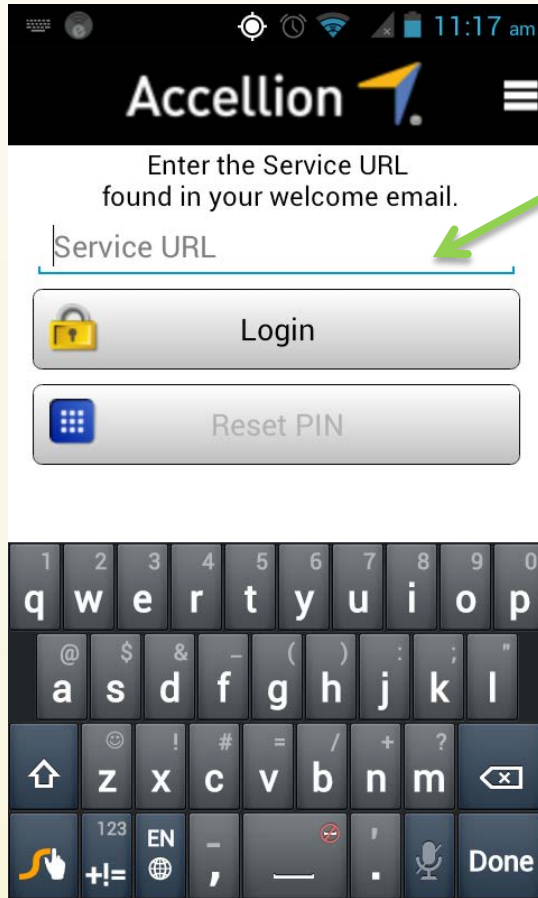
- Click on **Choose File**.
- Select the file that you want to upload from your computer and click on **Add**.
- The newly added file will show up in your Kitedrive folder as well as all the places where you have access to your Kitedrive folder.



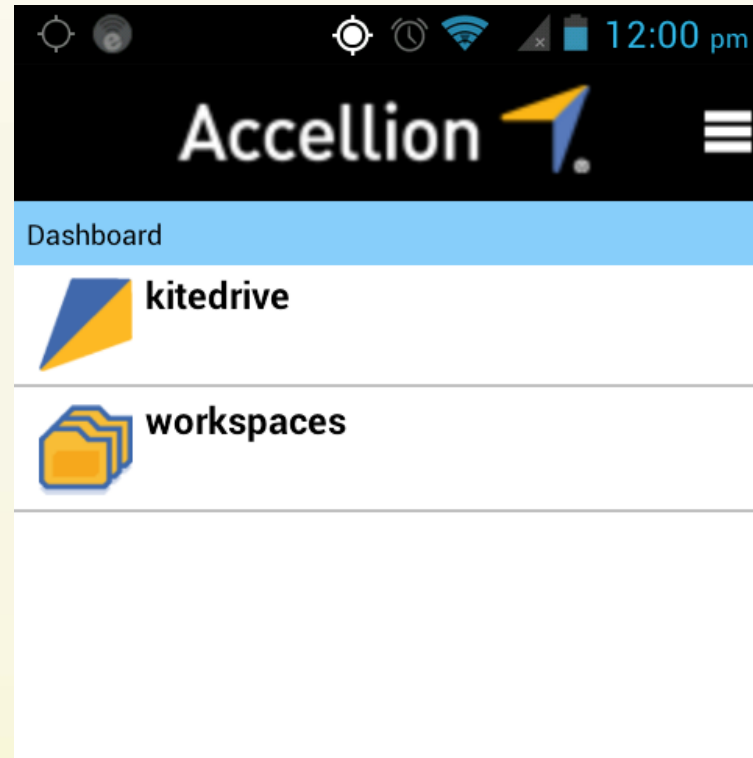
HARVARD

School of Engineering
and Applied Sciences

Kitedrive on your Mobile Device



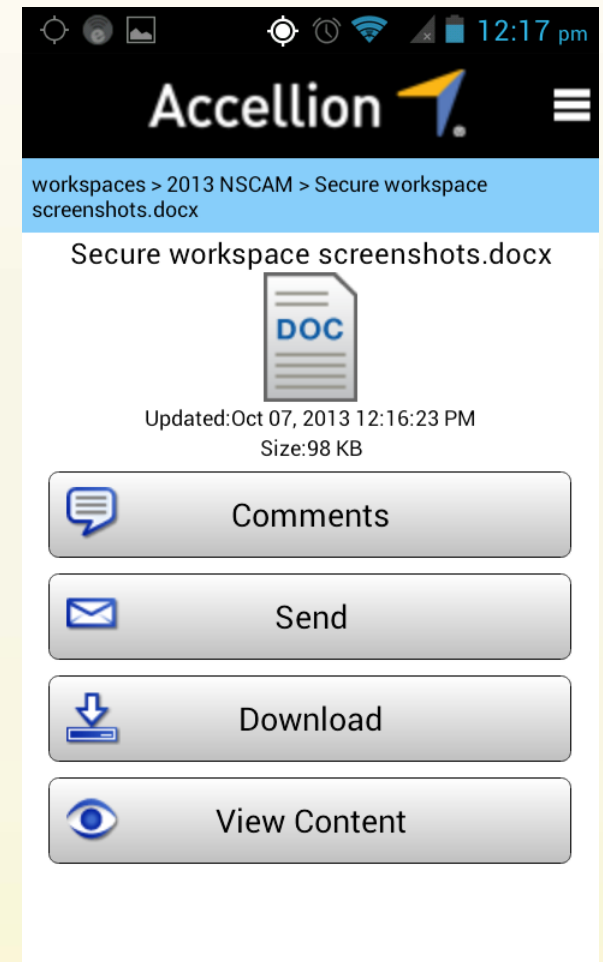
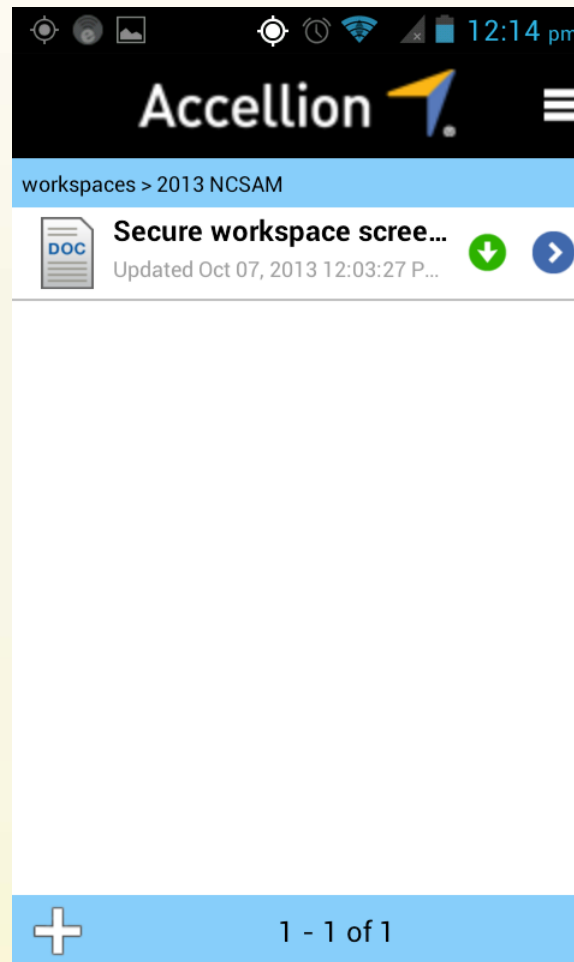
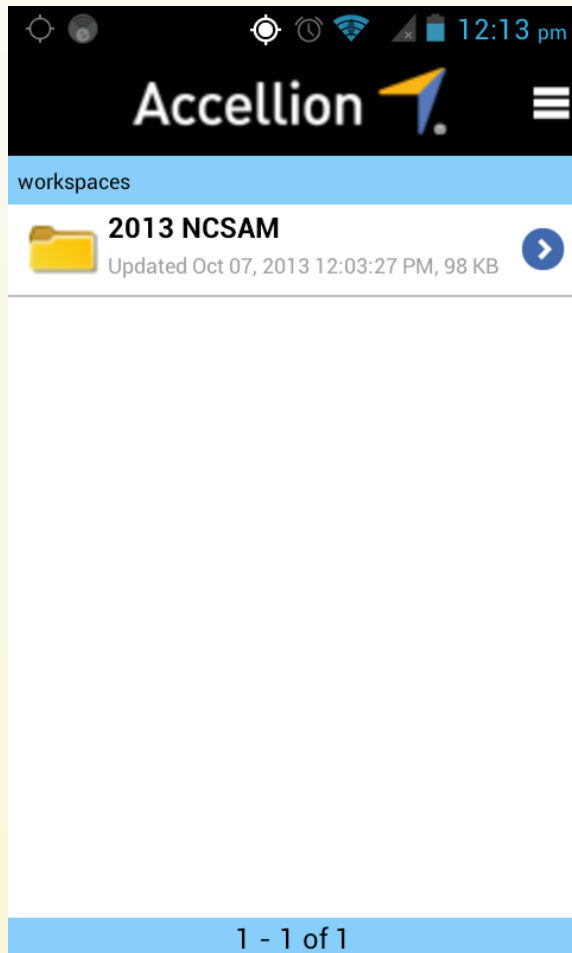
Service URL: sft.seas.harvard.edu



HARVARD

School of Engineering
and Applied Sciences

Kitedrive on Mobile Device



HARVARD

School of Engineering
and Applied Sciences

Sharing Files

- Upload files to a workspace in the kitedrive to share it with others.
 1. From the **kitedrive menu**, select **Open web interface**.
 2. From the **Options** menu, select **Add Nested Workspace**.
 3. Follow the **Create Nested Workspace** wizard as it steps you through the set up process.
 4. Add a file to the nested workspace. Click **Add File**, and then follow the **Add Files wizard**.



HARVARD

School of Engineering
and Applied Sciences

Demo & Closing Remarks

- Kitedrive provides a more secure way of collaborating over the network.
- Unified solution across SEAS.
- Easy to use. File can be accesses via:
 - Web
 - Desktop
 - Mobile device



HARVARD

School of Engineering
and Applied Sciences

Kitedrive Resources

- Complete guide to using Kitedrive:
<https://igppdropbox2.ucsd.edu/static/Pdf/Kitedrive%20Sync%20Getting%20Started%20Guide.pdf>
- Kitedrive Download:
<http://www.kitedrive.com/download>
- Accellion YouTube video:
<http://www.youtube.com/watch?v=eJRZ6nQETPw&noindex=1>
<http://www.youtube.com/watch?v=gS9OnxPX-WI>



HARVARD

School of Engineering
and Applied Sciences

Questions? Comments? Concerns?



HARVARD

School of Engineering
and Applied Sciences