



KLC Ohana News



FEBRUARY 2017

KIHEI LUTHERAN CHURCH INTERIM PASTOR DAVID BARBER

ANNUAL CONGREGATIONAL MEETING



Sunday, February 26th, has been chosen for the KLC Annual Congregational Meeting, which will take place in-between services, around 9:15 a.m. On that day the different ministry teams of KLC will present their reports, along with the elections of voting members to the 2017 Pacifica Synod Assembly. Please mark that date on your calendar and plan to attend this important meeting.

different ministry teams of KLC will present their reports, along with the elections of voting members to the 2017 Pacifica Synod Assembly. Please mark that date on your calendar and plan to attend this important meeting.

Reminder: 2017 CONTRIBUTION ENVELOPES

Many of our Members and Associate Members have already picked up their 2017 contribution envelopes. If you have not picked yours up yet, please do so when you go to your next worship service. Remember that if you responded to the e-mail Cate sent out that you do not want envelopes they will not be in there. If you cannot remember just send a quick e-mail to Cate and she can let you know if you did. If you live out of town and would like us to mail the envelopes to you, please email Cate, KLC Office Manager, at KLC@KiheiLutheran.org.

Offering Envelopes



ASSEMBLY VOTING MEMBERS

The 2017 Pacifica Synod Assembly will take place May 11-13, in San Diego. Would you be interested in representing KLC as a voting member at that assembly? We are currently looking for people to place into nomination for the two voting members we are required to send.



We must have one male and one female member. All costs are paid for, including airfare, hotel, and food. If you would be interested, please talk with Mark Fornwall. Our congregation's voting members will be elected at the annual congregational meeting later this month.

congregation's voting members will be elected at the annual congregational meeting later this month.

WHALE WATCH

The annual KLC whale watch will take place on Sunday, February 26th, from 2:00-4:00 p.m. Cost is \$20/adult (\$15/children 12 and under). Sign up have started. The boat is limited to 145 people. The sign-up will be on the lanai after both church services. You may also call the office or stop by during the week and Cate will be able to help you.



ALOHA FROM PASTOR DAVID



David Barber

He has told you, O mortal, what is good; and what does the Lord require of you but to do justice, and to love kindness, and to walk humbly with your God? (Micah 6:8)



We have just witnessed the inauguration of the 45th President of the United States, Donald J. Trump. I did not vote for him, and I have some serious reservations about who he is and how he will lead our country. I understand the serious divide in our country and the dissatisfaction of many citizens with the political status quo in Washington D.C. However, I am greatly concerned how this new administration will deliver just and fair treatment for all, faithful stewardship of God's creation, and welcome to the refugee and the stranger.

The prophet Micah lifts up some inherent qualities that flow and emerge from a relationship that is centered in God. As people of faith we strive for righteousness and for justice especially for those on the margins of life. As people of faith, we love kindness and are engaged in acts of gracious compassion and mercy for all people – even our enemies. We do this because each and every day we are to walk in humble obedience and trust with God.

This is the work we do regardless of who occupies the oval office. God is not a Republican or a Democrat, a Socialist or a Capitalist. Whoever might be president, the work of the church and the mission that God has entrusted to us is always very critical, but this time may simply exaggerate for us the need to be courageous and bold in our faith, to be visible in our witness, and to serve in humble obedience as we work for the good of all.

A Lutheran pastor in Denver, Nadia Bolz-Weber, wrote after the election:

We live in the same country we did before the election, but the ugliness is just less hidden. But something else is also being revealed, and that's the strong heart of God's people. People who place more hope in The Kingdom than in The Government...People who will stand with the vulnerable... People who will love harder...

People who have been swept up into the radical reconciliation and mercy of a crucified and risen God who will use that, and not the results of an election, to determine what we believe, who we consider worthy, what is worth paying attention to, what we value, and in whom we place our trust.

The Kingdom of God has always grown stronger in challenging times, and I believe with everything in me that it will do so now as well. May it be so.

Last Advent I referred to the church as “a word out of place.” In other words, we don't fit the context in which we are situated. The body of Christ by its very existence stands as “a word out of place.” Kihei Lutheran stands as a “word out of place.” We not only proclaim, but we live as a word of hope in the midst of despair. We are a word of life and resurrection in the midst of death.

We are a “word out of place” that declares peace and justice, kindness, mercy, and compassion – not just for white Americans but for people of every class and culture and sexual orientation, male and female, refugee, and illegal immigrant. These are basic Christian values, and we are called in our ministry and our life together to make these front and center in all that we do.

As I ponder our church sign at the front of our property with our name and our worship times, perhaps we need another larger sign that announces to all on Pi'ilani Highway: “Whoever you are and wherever you're at in life, you are welcome here. You are loved, and you have a place at God's table.”

May we come together in these challenging times to reaffirm what we believe and to rededicate ourselves “to do justice, and to love kindness, and to walk humbly with our God.” May the Holy Spirit empower us with strength and fortitude to be a “word out of place” to each other and to the world, and let us pray that this might be so.

Pastor David

“Therefore if anyone is in Christ, he is a new creature; the old things passed away; behold new things have come.” (2 Corinthians 5:17)

Hau’oli Makahiki Hou! Welcome to 2017 and whatever God has planned for us in this new year. While it may be a stretch to relate the verse above to this newsletter article I do see connections. God is always creating, old things pass (as in the year 2016) and are replaced, healed and renewed. As a congregation, 2016 was a good year. We are moving along the path toward calling a new Pastor, began some really good new programs while maintaining many of our excellent programs, and finished the year on strong financial footing. We are experiencing Christ’s recreation and begin 2017 on a high note.

I want to ask for your support for one project that Council decided to undertake at our last meeting. The parsonage is old and new! We were fortunate to remodel a part of the home about 10 years ago and it is still in good shape. The work primarily focused on the kitchen. It looks quite nice and provides a very comfortable and welcoming environment for our Pastor. However, the home itself has become worn and is in need of renewal in other areas. The home was built in the late 1980s and some parts show the wear expected from a facility of that age. The upstairs bathroom is in need of repairs and updating, the downstairs bath is also in need of a deep cleaning and updating. In addition, the window coverings and flooring need replacement throughout the house and the entire interior needs repainting.

With that background Sue Morcroft and Carolyn Rixey-Wagner (property committee members) have been hard at work developing a plan for making the necessary improvements. At the same time, the Finance team has been looking at how to provide the necessary financial support. The work will involve replacing bathroom vanities and fixtures, replacing all flooring (except in the Kitchen) and window coverings as well as painting the interior. The cost estimate is a little over \$50,000. The finance team was able to provide \$30,000 from existing funds including the funds that are in the parsonage reserve account. We need an additional \$20,000 minimum. With the beginning transition of the Barbers to Honolulu and our hope to call a pastor in the near future the timing seems right to begin the work on the parsonage. Council approved the general plan, we now ask for your support for the project and to help with the additional needed funding. As things develop we will keep you informed and will include this as an agenda item for our annual meeting next month.

As a starting point Pastor and Karen are planning to participate in the Great Aloha Run this February and would accept per mile donations to be applied to the work on the parsonage (see the announcement below). I look forward to working with you to provide a comfortable and welcoming home for our next Pastor.

With Warmest Aloha, Mark Fornwall

FUND	RAISER	FOR	PARSONAGE	RENEWAL
UNDRARISE	<p><i>Pastor David and Karen are going to run The Great Aloha Run in Honolulu on President’s Day, February 20. The Great Aloha Run is an 8.15 mile race from Aloha Tower to Aloha Stadium.</i></p> <p><i>In order to have some fun, heighten some awareness for parsonage renewal, as well as raise some money for this project, Karen and Pastor David are asking for you to sponsor them by pledging so much per mile. The money that is given will be dedicated toward parsonage renewal. Please watch for a sign-up sheet the next three Sundays. Mahalo for your support.</i></p>			



CALL COMMITTEE UPDATE



We are happy to report that we have finally received some candidates and we are starting to interview! This is a long process and although it can be frustrating, we are excited to finally be moving forward and we are confident that the right candidate is coming our way. Please keep us in your prayers.....Mahalo!

Adult Studies

Please join us in the old kitchen on Wednesday evenings at 6:30 p.m. We are studying the Book of Matthew. Even if you haven't attended, you are welcome and encouraged to attend since each week will offer insight into the verses and chapters we are studying. Please come. We would be delighted by your presence.

The Sunday forum between worship services provides a variety of topics along with the opportunity for discussion with those who attend. During January we have been exploring "Who is Jesus and his relevance for today?" In the coming weeks we will also explore Luther's Small Catechism and in particular the Ten Commandments and their application in daily life. We meet in the multi-purpose room next to the kitchen. We welcome your presence here as well.



BIBLE STUDY OPTIONS



PHOTO POLICY



At our November Council meeting the Worship Committee asked the council to consider a policy for publication of photos associated with KLC activities, members and visitors. The Council referred the action to the Administrative Committee. After doing some research we learned our Church, the Evangelical Church in America (ELCA) has guidelines for how to use photos taken at events associated with our congregation. These guidelines suggested that we develop a policy for use of photographs taken by the congregation, that the policy be posted and that we seek permission when taking photos of minors. The ELCA policy can be found at [http://download.elca.org/ELCA%20Resource%20Repository/Guidelines for Using Photos of Congregation Members.pdf](http://download.elca.org/ELCA%20Resource%20Repository/Guidelines%20for%20Using%20Photos%20of%20Congregation%20Members.pdf).

After reviewing these guidelines we thought it appropriate to prepare our own policy, post it where all can see and also place a brief reminder in our weekly bulletin so that visitors are also aware of that photos may be taken. We will also send a brief paragraph in our weekly E-blasts just to ensure that most people are aware of what we will be doing. Very briefly, you will see little change from what we have done in the past. That is to say that we feel that we were doing a pretty good job of informing people and using these photos appropriately. There will be two changes, first we will seek written permission annually from parents to use photos of their children and second if we choose to use photos for design purposes for any printed or social media (pictures that will be used continually for a long period of time) we will seek written permission. However, for weekly posts on social media, use in the directory and other similar applications we expect little change. Please let any Council Member, Steve Moksnes (Photo coordinator) or Phil Proctor (vice President and Chair of the Administrative Committee) know if you have specific questions or if you would rather your picture not be used. We hope that you find this change helpful and not burdensome.

We had a great turnout for our council meeting and I think all of us feel that we get a lot accomplished each time we meet.

Our treasurer reported that we are going into the new year with almost twice as much in the bank as we did last year. This is good, due to the fact that we have some major expenses coming up due to sprinkler repairs and front doors for the church just to hit on the large expenditures coming up. Also, the parsonage needs major repairs before it can even be shown to an incoming pastor and this could be an important part of their decision in whether they want to come to Maui .

We now have 72 pledges in the amount of \$285,301 for the year. We received 97% of the pledges from the previous year which is wonderful and we owe a great deal of thanks to everyone who helped make that possible. Thank you, and God thanks you.

Our nominating committee has been formed and their work will soon be started for the following year. Anyone interested in serving in the church, please let them know that you are willing. It is very fulfilling work and anything you can do to help will be greatly appreciated by all of us. The committee is made up of Vicki Lee, Dave Ballaine, Keli Nelson and Donna Smith. Please grab one of the committee and tell them your interest, they will be happy to talk to you.

Our thanks to Pastor David and Karen for being so patient with us and being willing to spend time apart during our time of searching for a new pastor. We appreciate your service to the lord and to us and hope that this process speeds along soon.

Respectfully submitted,

Darleen Owens
Church Council Secretary

VOLUNTEERING OPPORTUNITIES DURING WORSHIP

If you have ever considered volunteering to serve in some capacity for the worship service but hesitated because you did not know exactly what you would need to do, there is now information to help.

Check the bulletin board to the right of the entrance to the sanctuary to read about providing refreshments, providing flowers, reading scripture, serving as assisting minister, ushering, greeting, and serving communion. This includes specifics for each volunteer service, like the fact that you do not need to bake your own goodies for refreshments, or how and when you will receive your scriptures and details for reading scripture or being assistant minister. It also includes the name and phone number of the person you should contact either to volunteer or with questions. This information is also in the white notebook on the usher's table, including extra copies in each sleeve for you to take.

Hopefully this information will help. And hopefully some of our members and friends will volunteer for some part of the worship service



ANNUAL YOUTH DINNER & SILENT AUCTION

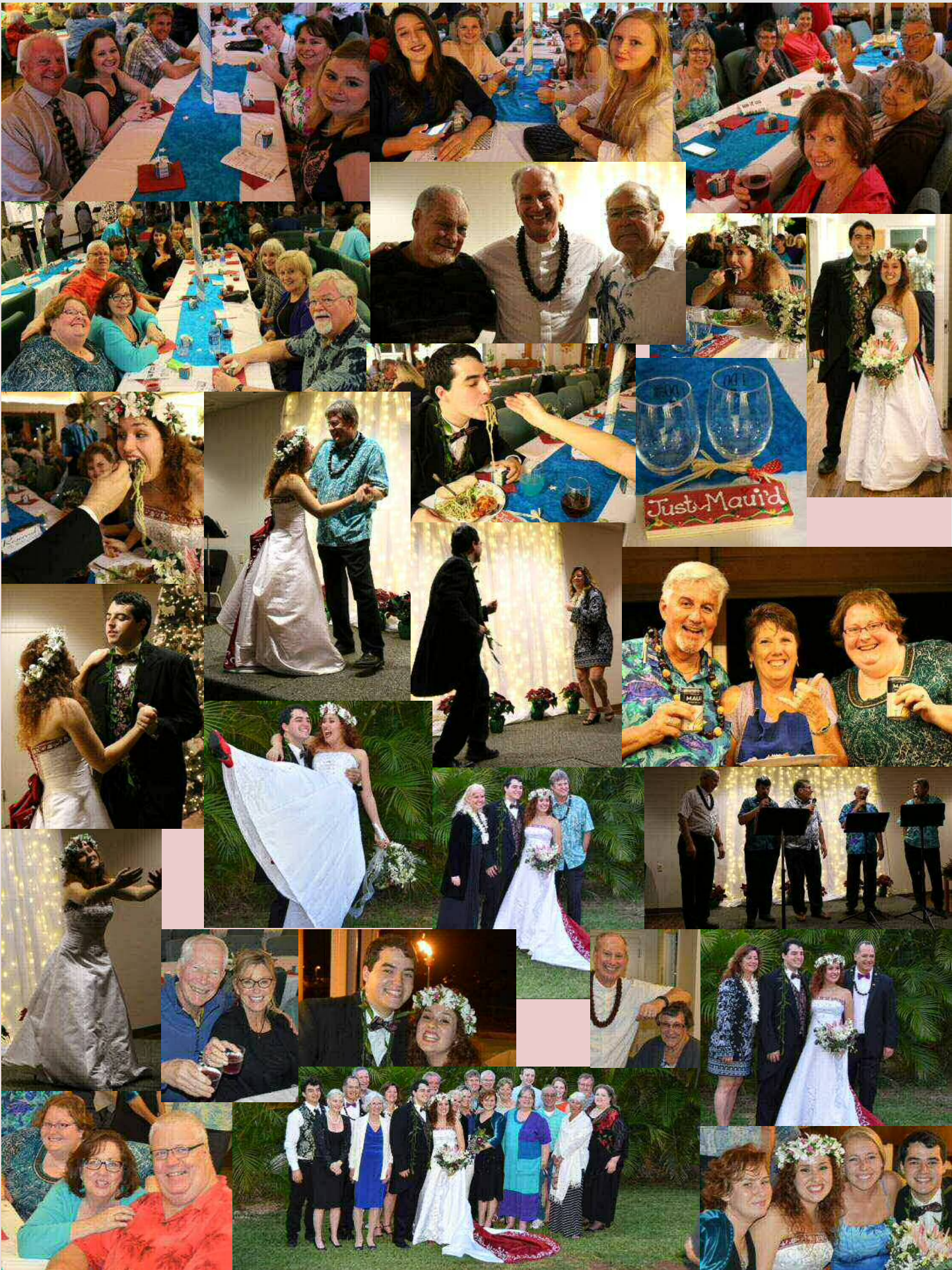


Come join us for a night on the
Love Boat!

The Annual Youth Dinner & Silent Auction is scheduled
for Saturday, February 18th at 5:30 p.m. Tickets are \$40/person.
Seating is limited to 100 people so make your
reservations today!

We are also seeking items for the silent auction. If you have an item that
is new or gently used and would like to donate, please see a youth mem-
ber after church or contact Debbie at 280-3385, or by email at
ilovesemis@hotmail.com.







It was great to have our college students home! We all got together, along with Pastor David and Karen, for a fun reunion and dinner. Now they are all back at school, hopefully studying hard!



You can take them out of Maui, but you can't take Maui out of them!

Next month I will feature our Young Adults, ages 22-25, so stay posted.....

GO GREEN

We would like to invite you to join the “Green Team” (not to be confused with the Political party with a similar name). The team began following a completion of the recent Sunday morning discussion group on the Pope’s Encyclical on Climate Change. Members of the group felt that it would be useful to form a group to help us better understand and practice good stewardship toward our earthly home.

Our first meeting covered a wide range of ideas as to what might be accomplished by the group. Topics included informing and educating on environmental issues and recycling as possible actions. These actions could range from small home and congregation-based projects to broader community engagement. While we are excited about the possibilities, we want to begin small and grow in ways deemed helpful.

Our first project is to try to discourage the use of Styrofoam cups for coffee. The material used is very unfriendly to our island environment and we hope to encourage the use of reusable cups. Thus we have started the **BYOC** (Bring Your Own Cup) to Church program to encourage the use of reusable cups. We also discussed expanding this to having a place for cups to remain at the church and be washed by a group of volunteers each Sunday. Please give us your thoughts.

If you share our concern for the aina or simply want to meet good people please join our team. At the very least please bring reusable cups for coffee! Our next meeting will be at KLC on February 23 at 4:00 PM.



MUSIC AT CHURCH

Have you ever wondered about the music that is chosen to be part of our services at Kihei Lutheran Church? Who plans the songs? How do they get chosen? When are we going to sing my favorite? Can we please never sing that one again? Here's a window into the process. There are four things to keep in mind when selecting music for our congregational singing. They are:

What is the theme of the day?

What are the liturgical actions that are taking place on this day? Is there a Baptism? Holy Communion? Installation of parish council members? Farewell and Godspeed to some longtime members?

What is the function of each hymn within the service?

Is a particular hymn appropriate for the liturgical season we are currently in? For example, we wouldn't choose, "Jesus Christ is Risen Today", during the season of Lent. We wouldn't choose, "Hark! The Herald Angels Sing", during the season of Advent.

The primary source we use when selecting hymns for liturgy is called, "Sunday and Seasons". Sunday and Seasons is a rich and reliable resource for worship. Sunday and Seasons is published out of the ELCA publishing house, Augsburg Fortress, and is used by pastors and lay people in planning worship.

At Kihei Lutheran Church, our process is very simple. Our Music Coordinator studies the scripture readings for each Sunday, uses Sunday and Seasons as well as other resources to choose hymns that mirror the message of the day. Most of our music is selected out of the Evangelical Lutheran Book of Worship which has Indexes which include: Topical Index, Sources of Service Music and Hymns, Alphabetical Index of Tunes and Metrical Index.

At our monthly Worship Team meeting, the team runs through the hymn selections and either approves them or make other suggestions for hymns. The Pastor also checks through the selections, especially if the sermon hymns reflect the theme of the Sunday and what he is going to reflect on in his sermon for the day.

If there are certain hymns you would like to sing more or have any other questions, please feel free to either contact the head of our Worship Team, Zel Terluin, or send a note to our Pastor.

Music in Liturgy Checklist: Practical Questions about music's role in your assembly

Is the congregation's voice primary? In other words, are people singing?

Do choirs and other musical ensembles support or overshadow the congregation's voice?

Does technology enliven or overshadow the congregation's voice?

Are musical leaders sensitive to how music functions in the liturgy?

Are congregation members lovingly encouraged to participate musically?

Do hymns and songs relate to the scripture readings?

Do hymns and songs function well according to their place in the service: gathering, word, meal or sending?

Does the music of the liturgy proclaim the gospel?

How is community formed by what is sung?

How diverse is the assembly's song?

Do you sing across space and time?

The checklist above is from the resources listed below sent out by the Evangelical Lutheran Church in America. This site is very helpful in understanding the active part of music in liturgy.

[http://download.elca.org/ELCA%20Resource%20Repository/
How do we select hymns and songs for all seasons.pdf](http://download.elca.org/ELCA%20Resource%20Repository/How%20do%20we%20select%20hymns%20and%20songs%20for%20all%20seasons.pdf)

[http://download.elca.org/ELCA%20Resource%20Repository/
What is the role of music in the Lutheran liturgy.pdf](http://download.elca.org/ELCA%20Resource%20Repository/What%20is%20the%20role%20of%20music%20in%20the%20Lutheran%20liturgy.pdf)

HAU'OLI LA HANAU! (Happy Birthday!)

Jeff Wright	2/3
Stephanie Mohr	2/5
Simon Stoltzfus	2/7
Jan McDonald	2/8
Harper Hottendorf	2/9
Betty Misner	2/10
Dave Reader	2/10
Kathleen Reiser	2/10
Jeanie Vance	2/11

Brad Hill	2/14
Carol Wakefield	2/14
Billie Moksnes	2/15
Kayana Kamoku	2/15
Connie Pluchos	2/19
Marilyn Hopkins	2/22
Richard Gesch	2/25
Lanyssa Kennedy	2/27
Jeff Baker	2/27



HAU'OLI LA HO'OMANA'O! (Happy Anniversary!)

David & Sally Handley	February 14, 1985
Edward & Lindsay Schafer	February 23, 1986
Jack & Nancy Jorden	February 28, 1960
Bryan & Megan Pearl	February 29, 2012



Worship Volunteers

February 2017

ASSISTING MINISTERS

5	8:00	Zel Terluin	10:30	Zel Terluin
12	8:00	Vicki Nelson	10:30	Jack Wierzba
19	8:00	Dave Ballaine	10:30	Andrea Harris
26	8:00	Richard Gesch	10:30	Holly Pendergast

READERS

5	8:00	Linda Hangartner	10:30	Nancy Meyer
12	8:00	Nancy Meyer	10:30	Dee Reader
19	8:00	Marilyn Hopkins	10:30	Jeane Raine
26	8:00	Gail Caires	10:30	Hilary Glassel

COMMUNION

5	8:00	Dee Reader, Marilyn Hopkins, Nancy Kentz, Donna Smith, Darrell & Mable Pierson	10:30	Holly Pendergast, Marilyn Hopkins, Charlotte & Jeff Wright, Margaret & Tony Luteijn
12	8:00	Mike Beyersdorf, Phil Proctor, Zel Terluin, Keli Nelson, Linda Hangartner & Sue Olson	10:30	Jerry & Berta Sieck. Hilary Glassel, Don & Vicki Lee
19	8:00	Hula Ladies	10:30	Billie & Steve Moksnes, Dori Thorngren, Andrea Harris, Jeane Raine & Joy Nelson
26	8:00	Brad & Diana Hill, Heather Ballaine & Dave Ballaine, Renee & Nels Romerdahl	10:30	Hula Ladies

GREETERS

5	8:00	David & Simon Stoltzfus, Carolyn Rixey-Wagner	10:30	Holly Pendergast, Barbara Rudow, Sue Moorcroft
12	8:00	Linda Archer & Joy Nelson	10:30	Hilary Glassel
19	8:00		10:30	Eric & Joleen Pilotin & Nels Glesne
26	8:00		10:30	

USHERS

5	8:00	Arnold Matson Duane Chaney	10:30	Duane Chaney Owen Pendergast
12	8:00	Arnold Matson Hottendorfs	10:30	Duane Chaney Lynn Carlson
19	8:00	Arnold Matson Duane Chaney	10:30	Duane Chaney Hilary Glassel
26	8:00	Arnold Matson Duane Chaney	10:30	Duane Chaney Lynn Carlson

MEDIA

5	8:00	Nels Romerdahl	10:30	Owen Pendergast
12	8:00	Joel Rudow	10:30	Stephanie Mohr
19	8:00	Mike Beyersdorf	10:30	Owen Pendergast
26	8:00	Stephanie Mohr	10:30	Joel Rudow

SUNDAY SCHOOL

5	10:30	
12	10:30	
19	10:30	
26	10:30	

FLOWERS

5	Patty Berg
12	Billie & Steve Moksnes
19	Marilyn Hopkins
26	Jack & Nancy Jorden

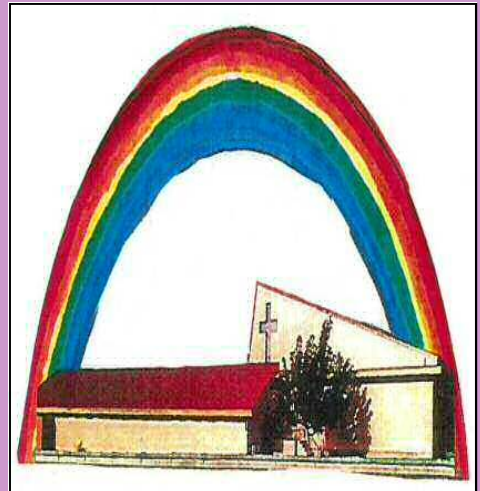
REFRESHMENTS

5	Sue Moorcroft
12	Dee & Dave Reader
19	
26	Lynn Carlson



Important Statistics

December	2015	2016
Average Sunday Worship Attendance -	165	163
Offerings For The Month (members & visitors)	\$38,085.92	\$51,307.68
Offerings – Year to Date (members & visitors)	\$333,143.56	\$332,344.37



Prayer Shawl Ministry

The Prayer Shawl Hui meets every Thursday from 9:00 to 11:00 in the Multipurpose Room to knit and crochet shawls and to pray for our church family and friends. We also go to lunch once every month to celebrate birthdays and enjoy each other's company. Won't you join us? We also ask for your prayers for this ministry.

God bless,

The Prayer Shawl Hui



Next Meeting will be
February 21st, at 7:00
p.m.

Men's Hui



MEN'S GROUP

February 28th at 6:00
p.m. at the Church.

All are Welcome

Women's Hui – All are Welcome!

WHEN: Tuesday, February 28th from 6:00 pm to 8:00 pm.

WHERE: Youth Room (old Kitchen).

BRING: Your favorite drink, a pupu to share and a Bible.

QUESTIONS: Call Betty Misner (280-1648) or Karen Carlson (446-1180)

We will be share the pupu's and then watch a short video by Sheila Walsh titled "The Storm Inside". We all face storms inside of us. Heartbreak, fear, regret. Insecurity or shame. During this study, we look at eight women of the Bible and see the crucial choices each one made and how God guided them through their storms.

Administrative Office Hours:

Monday thru Friday:
9:00 AM—5:00 PM



"LIKE" US ON FACEBOOK

If you haven't already "liked" our page:
<http://www.facebook.com/Kiheilutheran>,
go ahead and do so to be the most up-to-date on
upcoming church events. A link is already on the church
website!



Kihei Lutheran Church February 2017



SUNDAY	MONDAY	TUESDAY	WEDNESDAY	THURSDAY	FRIDAY	SATURDAY
29 8am Worship 9:15am Choir 9:15am Jr/Sr. High Sunday School 9:15am Adult Discussion 10:30 Worship 5pm Tongan United Methodist	30 10am Monday Meditation's 5pm Monday's at Manoli's 8pm Tongan UMC Choir	31 12pm Al-Anon 5pm Chimes	1 8:30am CHEMA School 5pm Tongan UMC 6:30pm Wednesday Study Hui 8pm Tongan UMC Choir	2 7am Weightwatchers 7:30am Prayer Hui 9am Prayer Shawl Hui 10am Humana 5:30pm Hula 5:30pm 4-Given 6:45pm Masterworks	3 12pm Al-Anon Meeting	4 9am Keiki Klotching Exchange 5pm CHEMA School Senior Dinner
5—Kealahou Food Pantry 8am Worship 9:15am Choir 9:15am Jr/Sr. High Sunday School 9:15am Adult Discussion 10:30 Worship 5pm Tongan United Methodist	6 10am Monday Meditation's 2pm Spiritual Gifts Team 5pm Monday's at Manoli's 6:15pm Mutual Ministry Team 8pm Tongan UMC Choir	7 12pm Al-Anon 5pm Chimes 6pm Property Team	8 5pm Tongan UMC 6:30pm Wednesday Study Hui 8pm Tongan UMC Choir	9 7am Weightwatchers 7:30am Prayer Hui 9am Prayer Shawl Hui 5:30pm Hula 5:30pm 4-Given 6:45pm Masterworks 7pm Committee Chairs	10 12pm Al-Anon Meeting	11 8am Maui Canoe Club 7pm Tongan UMC Choir
12 8am Worship 9:15am Choir 9:15am Jr/Sr. High Sunday School 9:15am Adult Discussion 10:30 Worship 5pm Tongan United Methodist	13 10am Monday Meditation's 5pm Monday's at Manoli's 6:15pm Worship Team 8pm Tongan UMC Choir	14 12pm Al-Anon 3pm Kihei-Wailea Rotary Interviews 5pm Community Assistance	15 8:30am CHEMA School 2pm Finance Team 5pm Tongan UMC 6:30pm Wednesday Study Hui 8pm Tongan UMC Choir	16 7am Weightwatchers 7:30am Prayer Hui 9am Prayer Shawl Hui 5:30pm Hula 5:30pm 4-Given 6:45pm Masterworks	17—Set-Up for Youth Dinner 10am Humana 12pm Al-Anon Meeting	18 5pm Youth Dinner
19—Backpack Buddies 8am Worship 9:15am Choir 9:15am Jr/Sr. High Sunday School 9:15am Adult Discussion 10:30 Worship 5pm Tongan United Methodist	20 10am Monday Meditation's 5pm Monday's at Manoli's 8pm Tongan UMC Choir	21 12pm Al-Anon 5pm Chimes 6pm Administrative Team 7pm Church Council	22—Newsletter Deadline 8:30am CHEMA School 5pm Tongan UMC 6:30pm Wednesday Study Hui 8pm Tongan UMC Choir	23 7am Weightwatchers 7:30am Prayer Hui 9am Prayer Shawl Hui 5:30pm Hula 5:30pm 4-Given 6:45pm Masterworks	24 12pm Al-Anon Meeting	25 7pm Tongan UMC Choir
26—Congregational Meeting 8am Worship 9:15am Congregational Meeting 10:30 Worship 5pm Tongan United Methodist	27 10am Monday Meditation's 5pm Monday's at Manoli's 8pm Tongan UMC Choir	28 10am Humana 12pm Al-Anon 5pm Chimes 6pm Women's Hui 6pm Men's Hui	1—Ash Wednesday 8:30am CHEMA School 5pm Tongan UMC 6:30pm Wednesday Study Hui 8pm Tongan UMC Choir	2 7am Weightwatchers 7:30am Prayer Hui 9am Prayer Shawl Hui 10am Humana 5:30pm Hula 5:30pm 4-Given 6:45pm Masterworks	3 12pm Al-Anon Meeting	4 7:45am Haleakala Shores AOA 7pm Tongan UMC Choir

Staff

Pastor David Barber
 Music Coordinator Beth Wills
 Church Administrative Asst. Cate Evert
 Bookkeeper Sue Whitney
 Nursery Attendant Lucinda Chartrand

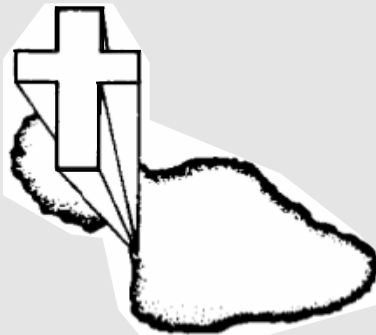
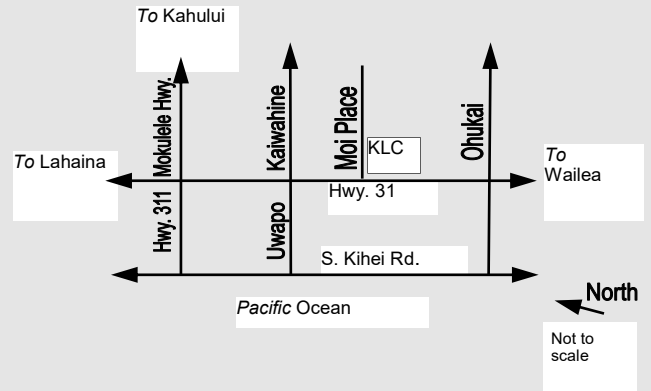
Worship Area Coordinators

Assisting Ministers Zel Terluin
 Chimes & Choir Director Beth Wills
 Communion Assistants Betty Misner
 Flowers Charlotte Wright
 Readers Nancy Meyer
 Refreshments Vicki Nelson
 Ushers Duane Chaney
 Bread Coordinator Sanni Tharp

Other Contacts

Treasurer Vicki Lee
 Financial Secretary Tom Rekow
 Hula Group Sally Handley
 E-mail Prayer Chain Cate Evert

SUNDAY WORSHIP 9:00 AM



Kihei Lutheran Church
 220 Moi Place, Kihei, HI 96753
 Phone: 808/879-7979
E-mail Address:
klc@kiheilutheran.org
Website Address:
www.kiheilutheran.org
Parsonage:
 2218 Auina Place, Kihei, HI 96753
 Pastor David: 868-3147 Cell:970-988-8274

“Where all know they are beloved children of God”

Address Correction Requested

Non-Profit Org.
 U. S. Postage
 Paid
 Permit 47
 Kihei, HI

Kihei Lutheran Church
 220 Moi Place
 Kihei, Maui, Hawaii 96753
 (808) 879-7979