

# Gumnut Gazette

September 2020 | Volume 1, Issue 2



## KOALAS ARE COOL

### What does a koalas nose, know?

Some people may think koalas all look the same, but they don't! Here is the secret. The koalas nose patterns are like fingerprints in humans. Their nostril patterns are unique to each koala and are what our keepers use to identify them.

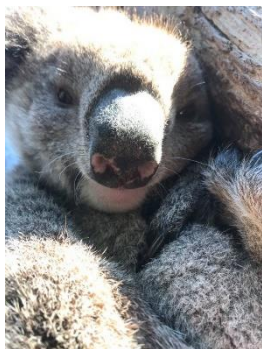


Photo: left to right – “Chrissy”, wild koala, “Jay” Koala photos at top: “Nick”, “Alfie”, “Kermit”, “Edmund” and “Poppy”

### Acknowledgement to country

The Department for Environment and Water acknowledges Aboriginal people as the First Peoples and Nations of the lands and waters we live and work upon and we pay our respects to their Elders past, present and emerging. We acknowledge and respect the deep

spiritual connection and the relationship that Aboriginal and Torres Strait Islander people have to Country.

The Department works in partnership with the First Peoples of South Australia and supports their Nations to take a leading role in caring for their Country.

### Inside this issue

What does a koalas nose, know?.....	1
Find a word.....	2
Clever koala.....	3
Koala Rescue.....	3
Best Friends.....	3
Maze time.....	4
Threatened species day.....	5
Species of koala.....	5

#### FUN FACT

Baby koalas are called 'joeys.'



## All about koalas

A W L H E K H Q P S W O E J X W H V B V  
 F M A D U K O A L A R E R O E S Y A X N  
 Y Y I D C O Y P M Q R N S E T H C M H A  
 A A P B A W D W H T S R R Y R K Q C B Q  
 N C U E L L C N M U H S S Z W Y K T O E  
 C Z S M Y Y S U A H A T B A G L V B W U  
 C N R A P B G L T L Q S R E Y V E A Z Y  
 L R A Z T K V M E T G D H A R J B V I R  
 R N M T U P A P D E S T F G N Z R L R U  
 R K D R S M T F N P P C N P L J X K V I  
 D P V O L Y A H O L R Z C E E F F F Q R  
 O D E L E J B U J C H Y C K C H M X P Z  
 S P P W A X C V Y C I G T R Z S O I P N  
 H L P P V H Z T X K S I H J T O L E P N  
 P C A Z E F L R J F R H T L F Q W R C P  
 J I Y W S R K Y C N C U I W A T C R O R  
 V C M K H A C U Q T Q R F C E A Q X R B  
 I X Z K K J T P Y F A P F V F H J P J V  
 F Z P Y M E O X G M G A M X U H I W Q X  
 N R E T T A P L I R T S O N E G V I H K

- marsupial
- koala
- backwards pouch
- pap
- joey
- scent gland
- gumtree
- eucalyptus leaves
- cute
- sleep
- nostril pattern
- fur

### Did you know?

The koalas closest living relative is the wombat.

### Did you know?

A mature koala can eat up to 60 gum trees a year for food.

### Jumble word

TECYPUULAS

-----

### Step words

Change the top word into the bottom word. Change only one letter at each step. Each line must make a word

BEAR

----

----

FEET

### Jumble word

ISPARMUAL

-----

MABWOT

-----

#### Answers from bird Issue:

Fill in the blanks: Emu-Lorikeet-Magpie-Fairy wren.

Who am I? Spoonbill (Royal)

Jumble Word: Magpie goose – Ibis

# Clever Koala



Photo: "Lofty" the koala

At Cleland Wildlife Park we are home to many resident koalas who are all unique and have their own personality. Koalas have an uncanny ability to defy nature, they have backwards pouches but live in trees, they only eat eucalyptus leaves and they sleep for up to 18-22 hours a day!

Today I'm going to share the story of "Lofty" the koala and his mischievous ability to open doors. "Lofty" is 5 years old and was born here at Cleland Wildlife Park. Although koalas sleep most of the day, this didn't stop cheeky "Lofty" from exploring and learning to open the door of his enclosure. He was caught one day climbing up the gate of his enclosure, and using his nose, he pushed the latch up, unlocking it and wandering out. Since his great escape, the keepers have put a special lock on the door.

Story by Koala Keeper "Ash"

Male koalas have a scent gland in the middle of their chest, which produces a strong smelling odour that can be rubbed against trees to mark their territory.

## Koala Rescue

Earlier this year bushfires spread across Australia, including Kangaroo Island (KI).

Many of the koalas on KI that survived the bushfires no longer had a home, or food, as so many trees were destroyed. It was decided to rescue and re-locate some to Cleland Wildlife Park.

The koalas came from the western end of the island where most, if not all, of their habitat had been lost in the recent bushfires.

These koalas are in strict quarantine and cannot be seen by the public, however are very well looked after and have been nurtured back to health by our expert keepers here at Cleland Wildlife Park.

Just recently, during a routine health check, it was discovered that two of our KI female adults, Holly and Lana, have pouch young (joeys). Exciting news!

We welcome these new additions to the Cleland Wildlife Park family.



Above: "Adam, "Kahlua" & "Ray"



Photos above:

"Phoenix" and "Breezy", the new joeys



**"Edmund" and "Brownie"**

Right (big spoon) = "Edmund" (boy)

Left (little spoon) = "Brownie" (girl)

## Best Friends

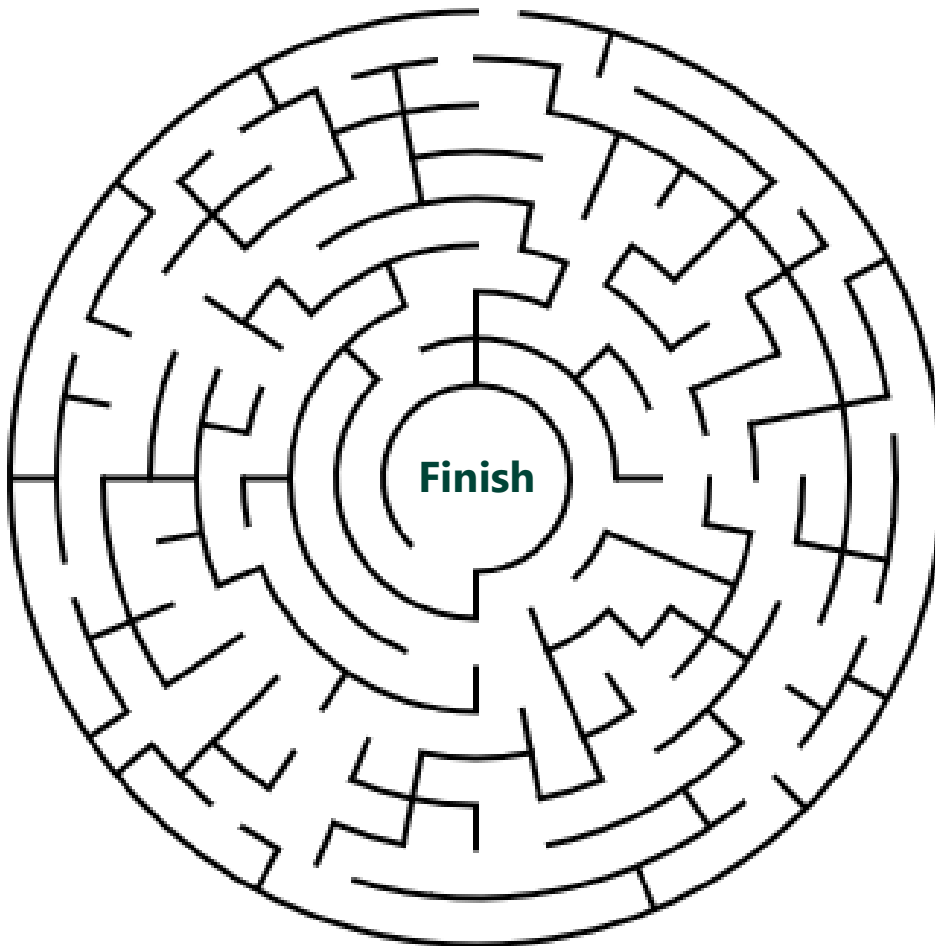
Edmund and Brownie are long time best buddies for nearly a decade, they are always seen having a cuddle and sharing a meal together. You can find them hanging out in the round loft at Cleland Wildlife Park.

Story by Koala Keeper "Amelia"



## MAZE

Start



Finish

### Did you know?

Koalas have two thumbs on each front paws.



### Did you know?

Their back two toes are fussed together and used for grooming



**FACT-** Koalas food (eucalyptus leaves) have very little nutritional value, it's like eating lettuce leaves. So they need to eats lots and sleep lots to conserve energy.

### Did you know?

Koalas are marsupials, not bears. Marsupials have fur, pouches and feed milk to their young.

## Did you know?

When koala joeys are ready to eat eucalyptus leaves, they first eat some of their mother's poo called 'pap.'

Pap contains special gut bacteria that koala joeys need to digest their diet of eucalyptus leaves.

## Your feedback

Is there a particular animal you really want to hear about?

Let us know!

Email:  
[clelandwildlifepark@sa.gov.au](mailto:clelandwildlifepark@sa.gov.au)

## National Threatened Species Day:

**Extinction** means there are no more individuals of that species alive anywhere in the world.

**Endangered** is when a type of animal or plant has become very rare and that could die out completely, if we don't do something to help them.

**Why is saving threatened species important?** Once plants and animals become extinct, they are gone forever, which can throw off the health and balance of the environment.

## Northern koalas

**Location:** Found in Queensland and New South Wales

**Size:** Smaller

**Body characteristics:** Light silvery-grey fur, shorter fur-suited to the tropical warm climate.

**Diet:** Eucalyptus leaves (native to north of Australia)



Photo – Northern Koala sourced <https://animalfactguide.com/animal-facts/koala/>

## Southern koalas

**Location:** Found in South Australia and Victoria

**Size:** Larger

**Body characteristics:** Darker fur, thick and fluffy suited to the cooler climate.

**Diet:** Eucalyptus leaves (native to south-east Australia).



Photo- Cleland Wildlife Park resident "Brownie"

## National Threatened Species Day

**When:** Monday 7th September, 2020

Threatened Species Day is to raise awareness about Australian plants and animals that are at risk of extinction in the wild.

## SCHOOL HOLIDAYS at CLELAND WILDLIFE PARK

### Wildification

**School holiday Program "Survival Heroes"**  
Discover the amazing adaptations our animals use to survive! The day will be filled with fun, games, trails, animal encounters and time with new friends.

**When:** Tues-Wed-Thurs  
(29th Sept – 8th Oct 2020)

**Time:** 9am-4pm  
For kids aged 5-12years

**Cost:** \$70

For more details go to [www.clelandwildlifepark.sa.gov.au](http://www.clelandwildlifepark.sa.gov.au) or call 8339 2444.

### Self-Guided Trail "Super Survivors" Trail

**When:** 7<sup>th</sup> September – 11<sup>th</sup> October 2020  
Free with Entry