

# **KODAK PROFESSIONAL 9810 Digital Photo Printer**



## **User Guide**



Eastman Kodak Company

343 State Street

Rochester, New York 14650

© Eastman Kodak Company, 2005

Kodak is a trademark of Eastman Kodak Company.

**P/N 4J5025**

---

# Table of Contents

## 1 Setting Up the Printer

Before You Begin .....	1-1
Recommended Air Flow Clearances .....	1-1
Loading the Paper .....	1-2
Loading the Ribbon .....	1-6
Installing the Print Catcher .....	1-7
Connecting the Cables .....	1-8
Connecting the power cable .....	1-8
Connecting the USB cable.....	1-8
Turning On the Printer .....	1-9

## 2 Printer Driver Software

Installing the Printer Driver.....	2-2
Borderless Printing .....	2-2
Customizing Printer Properties.....	2-3
Customizing Printing Preferences .....	2-3
Color Management using ADOBE PHOTOSHOP 7.0 or Greater .....	2-4
Custom Image Composition Packages .....	2-5
Creating a Custom Package .....	2-5
Selecting a Custom Package .....	2-6
Resolving Printing Problems .....	2-7
Uninstalling the Printer and Printer Driver .....	2-9

## 3 Calibrating the Printer

Installing the Calibration Software .....	3-1
Using the Easy Cal Calibration Utility.....	3-2
Uninstalling the Calibration Software .....	3-8
Resolving Calibration Error Messages .....	3-9

## 4 Operating the Printer

Understanding the Operator Panel Lights .....	4-1
Using Setup Mode to Review Printer Settings .....	4-1
Accessing the Printer Settings .....	4-2
Working in Test Print Mode .....	4-3
Making a test print .....	4-3

Changing the quantity of test prints.....	4-3
<b>5 Using the Diagnostic Tool</b>	
Adjusting Print Head and Paper Cutter Registration .....	5-1
Updating Firmware.....	5-4
<b>6 Troubleshooting the Printer</b>	
<b>Appendix A: Important Printer Information</b>	
Printer Specifications .....	A-1
ENERGY STAR Partner .....	A-1
<b>Appendix B: Safety and Regulatory Information</b>	
Important Safety Information .....	B-1
Safety Labels.....	B-2
Regulatory and Safety Compliance .....	B-2
Safety .....	B-2
Radio frequency interference .....	B-2
Noise emission.....	B-3
Disposal.....	B-3

---

# 1 Setting Up the Printer

## Before You Begin

**IMPORTANT:** *Your KODAK PROFESSIONAL 9810 Digital Photo Printer may come with several power cables. Be sure to select the correct power cable for your country.*

Have the following items available before you begin your printer setup:

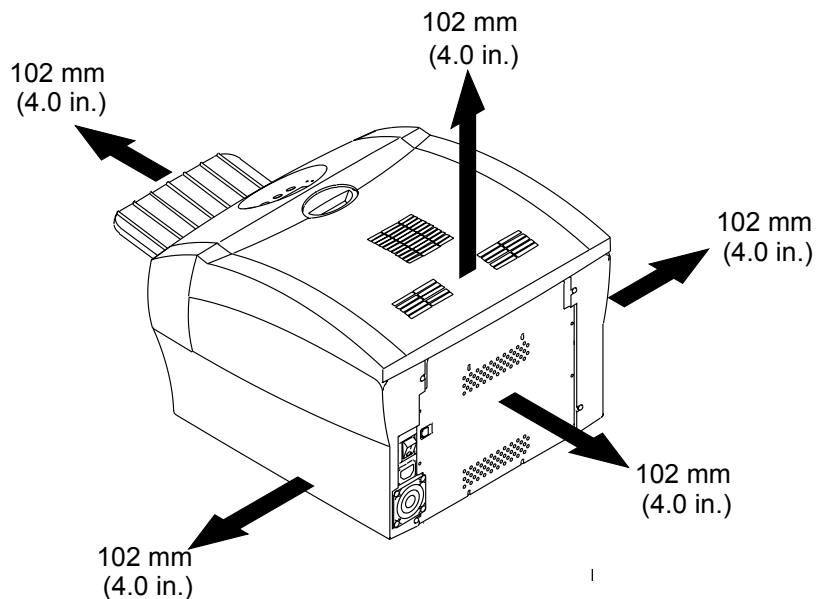
- A KODAK Photo Print Kit that contains the correct size paper and ribbon for your printer.
- USB cable (included).

**IMPORTANT:** *The printer weighs 18 kg (40 lbs). Use caution when lifting or moving the printer.*

**IMPORTANT:** *Install the printer driver software before turning on the printer. See [“Printer Driver Software”](#) on page 2-1.*

## Recommended Air Flow Clearances

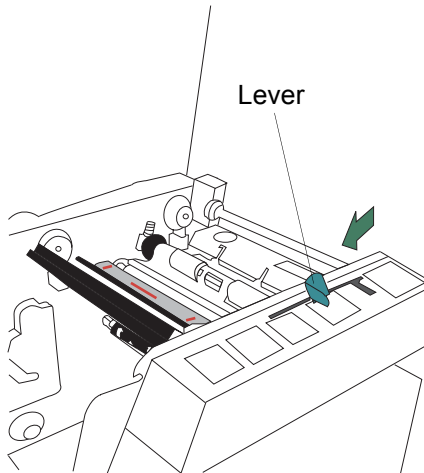
Refer to the following illustration for the recommended air flow clearances for the printer.



## Loading the Paper

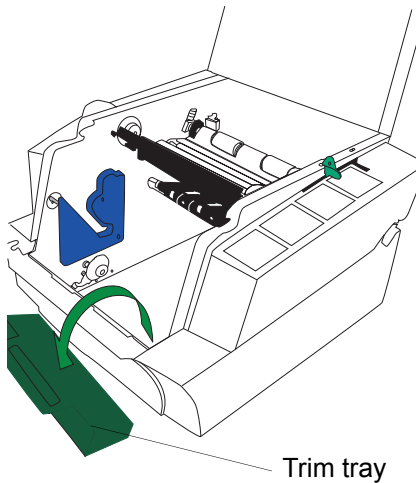
To load the paper into the printer:

1. Open the printer cover.
2. If necessary, remove the ribbon from the printer.
3. Move the lever to the unlocked position.



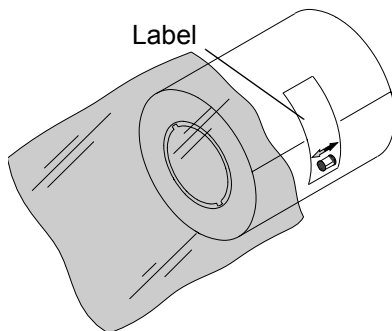
4. Remove the trim tray.

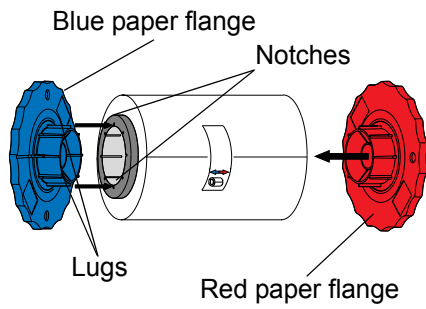
**IMPORTANT:** *To keep your prints dust-free and to prevent paper jams, empty the trim tray each time you change the paper.*



5. Remove the plastic cover from the new paper roll.

**IMPORTANT:** *Do not remove the label from the paper roll until you have successfully loaded the paper into the printer.*

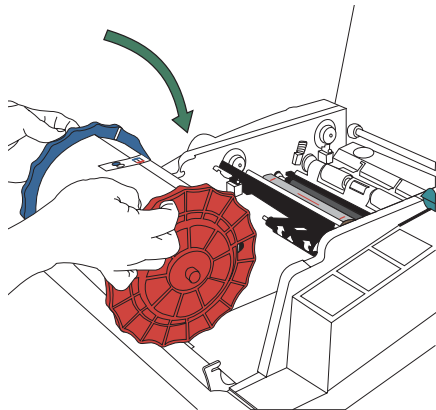




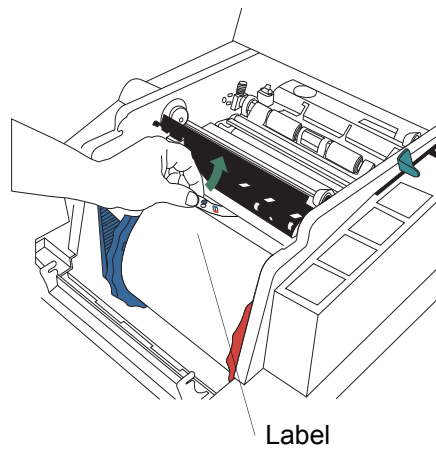
6. Attach the paper flanges provided with the printer to each end of the paper roll.

- a. Line up the lugs on the blue paper flange with the notches on the left side of the paper roll.
- b. Place the blue paper flange on the left side of the paper roll.
- c. Place the red paper flange on the right side of the paper roll.

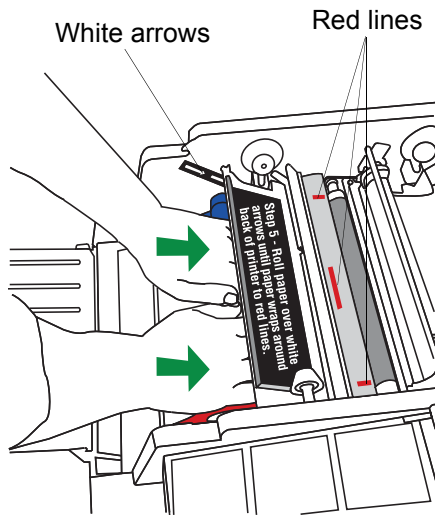
**NOTE:** Be sure to line up the lugs on the blue paper flange with the notches on the left side of the paper roll. If you do not attach the paper flange properly, the paper roll will not fit into the printer.



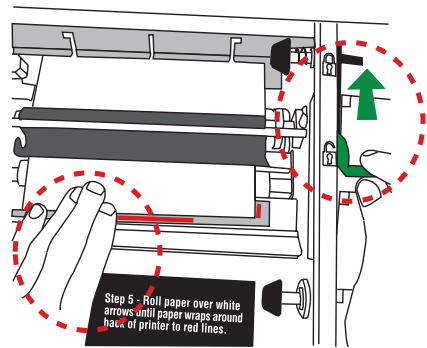
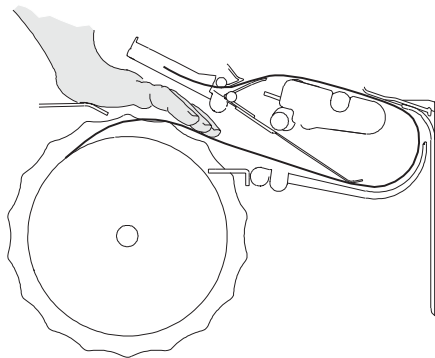
7. Gently set the paper roll into the printer according to the blue and red arrows on the label.



8. Remove the label.

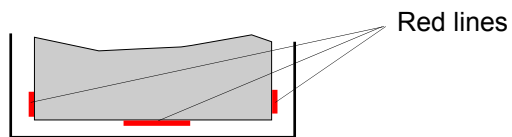


SIDE VIEW



9. Feed the paper in the direction of the white arrows until the paper wraps around the back of the printer and touches the red lines.

10. Hold the paper in place between the red lines with your hand. Make sure the paper edges do not extend over the red lines.



11. Move the lever to the locked position.



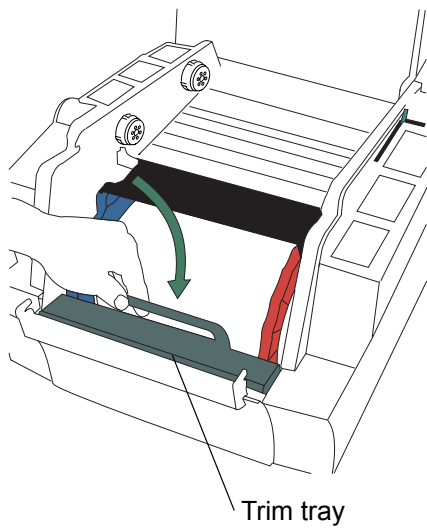


12. Install the trim tray.



**CAUTION:**

**If you transport or ship the printer, first remove the media.  
Failure to do so can damage the printer.**



## Loading the Ribbon

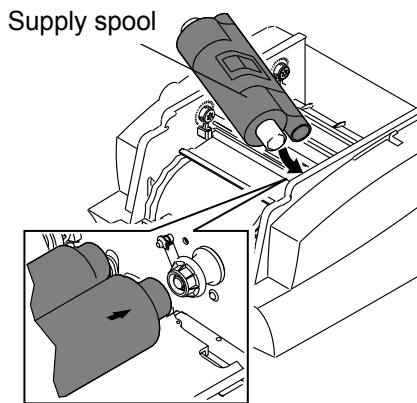
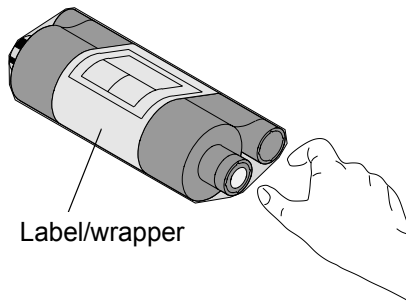
To load the ribbon into the printer:

1. If you are replacing a ribbon, remove the used ribbon from the printer.

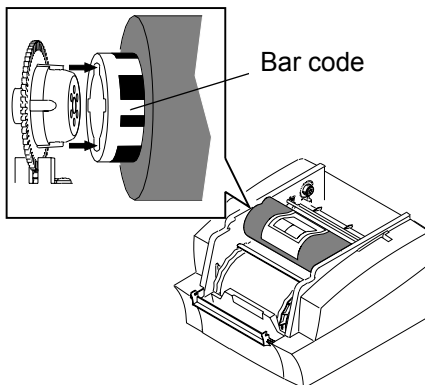
**NOTE:** Images remain on the ribbon after printing. If you need to maintain confidentiality, dispose of the used ribbon appropriately.

2. Insert your fingers into the holes in the plastic on the end of the ribbon. Remove the plastic cover from the ribbon.

**IMPORTANT:** *Do not remove the label/wrapper from the ribbon at this time.*

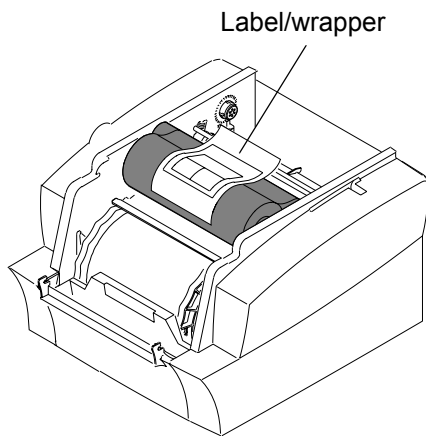


3. Push the right end of the supply spool into the front spool holder on the right.

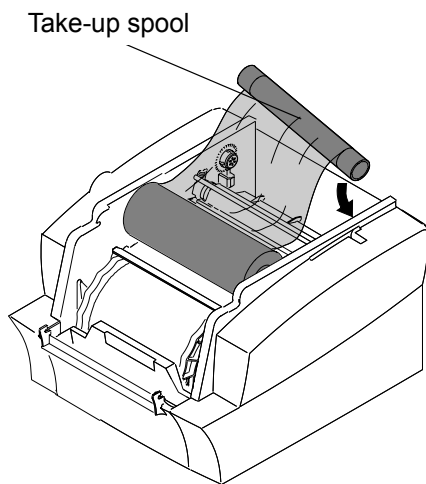


4. Place the bar code end of the supply spool into the front spool holder on the left.

**IMPORTANT:** *Make sure to line up the notches on the supply spool with the lugs on the spool holder.*



5. Remove the label/wrapper from the ribbon.



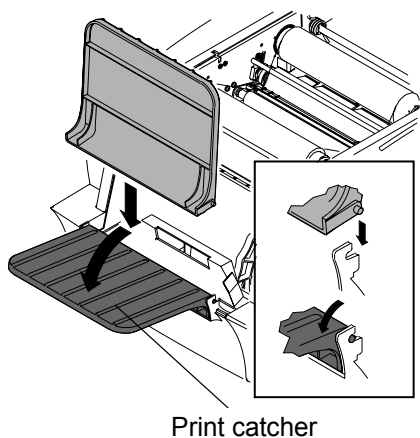
6. Push the right side of the take-up spool into the rear spool holder on the right.
7. Place the left side of the take-up spool into the rear spool holder on the left.
8. Rotate the take-up spool until it locks into place.
9. If there is any slack in the ribbon, remove it by turning the take-up spool.

**IMPORTANT:** *Slack in the ribbon can cause a paper jam when making prints.*

## Installing the Print Catcher

The print catcher collects finished prints as they exit the printer.

- Set the print catcher into the printer as shown.



## Connecting the Cables

### Connecting the power cable

You may have received more than one power cable with your printer. Be sure to use the correct power cable required for your country.

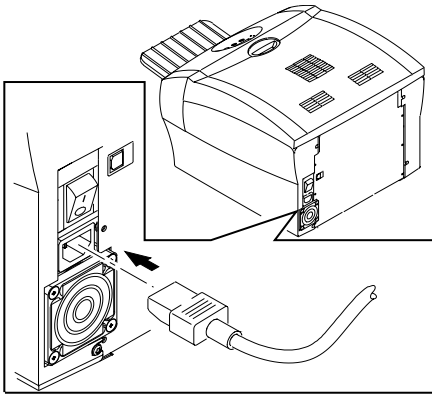
1. Check that the power switch is turned off (○).



**CAUTION:**

**The power outlet must be grounded. An ungrounded outlet can cause fire, electric shock, or harmful interference to nearby electrical devices.**

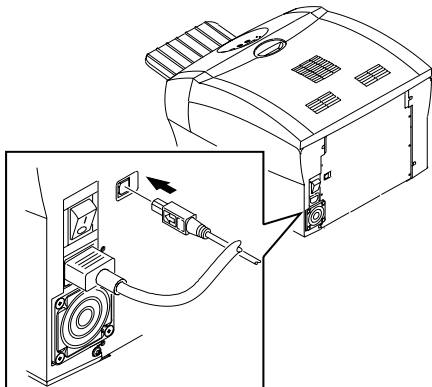
2. Connect the power cable to the power connector on the back of the printer and to a grounded power outlet.



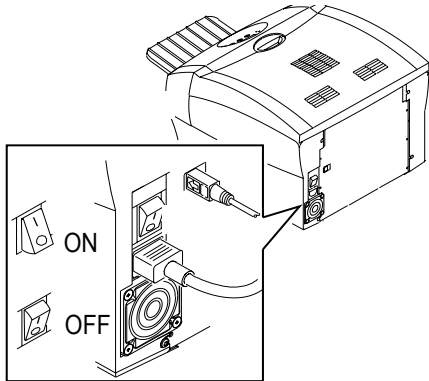
### Connecting the USB cable

Use the included USB cable.

1. Check that the power switch is turned off (○).
2. Connect the USB cable to the USB connector on the printer and to the USB connector on the computer.



## Turning On the Printer



**IMPORTANT:** *Install the printer driver software before turning on the printer. See “Printer Driver Software” on page 2-1.*

Press the power switch to on (|).

*On the operator panel, the orange Power light and the green Ready light illuminate, and the Ready message appears when the printer is initialized.*

1. To turn off the printer, press the power switch to off (○).



**CAUTION:**

**If you transport or ship the printer, first remove the media.  
Failure to do so can damage the printer.**



---

## 2 Printer Driver Software

A printer driver is software that allows you to print from your applications.

The printer driver for the KODAK PROFESSIONAL 9810 Digital Photo Printer (WINDOWS 2000/XP Operating System) requires the following (or later):

Operating System	Minimum Service Pack	Minimum Memory
WINDOWS 2000 Professional	SP4	128 MB
WINDOWS 2000 Server	SP4	256 MB
WINDOWS 2000 Advanced Server	SP4	256 MB
WINDOWS Server 2003		256 MB
WINDOWS XP Home Edition	SP1	128 MB
WINDOWS XP Professional	SP1	128 MB

The printer driver also requires a functional USB port to communicate with the printer. The printer is compliant with the USB 2.0 protocol.

NOTE: If your equipment only supports the USB 1.1 protocol, print times may be slower.

## Installing the Printer Driver

This procedure will install the printer driver and Diagnostic tool.

NOTE: You must have Administrator privilege to install the printer driver.

1. Press the power switch to off (○) to turn off the printer.
2. Insert the CD that came with the printer into your CD-ROM drive.  
*The CD Browser launches automatically. If it does not, double-click the **Kodak9810.exe** file in the CD root directory.*

3. Select your language.
4. Click **Software**.

NOTE: Before installing the printer driver, read the Printer Driver Readme file for information and updates.

5. Click **Printer Driver** to start the installer.

IMPORTANT: *One or more screens may show the KODAK Photo Printer 8800. The KODAK PROFESSIONAL 9810 Digital Photo Printer will still install correctly. Continue as directed on the screens.*

6. Follow the on-screen instructions to install the printer driver and the Diagnostic tool.  
The printer driver and Diagnostic tool (see [Page 5-1](#)) will be installed.
7. Press the power switch to on (I) to turn on the printer.

## Borderless Printing

For borderless printing, set the size of the image as follows:

Page Size	Image Size
8 x 10	8.213 (20.86 cm) x 10.08 in. (25.60 cm) at 300 DPI (or 2464 x 3024 pixels)
8 x 12	8.213 (20.86 cm) x 12.08 in. (30.68 cm) at 300 DPI (or 2464 x 3624 pixels)

There are several ways to achieve this such as:

- Crop or resize the image to one of the image sizes shown above.
- Set scaling to 103% (using the printer driver's Properties / Advanced option).
- Use the Scale to Fill option if your application supports this feature.



---

## Customizing Printer Properties

The Printer Properties dialog box displays options for setting the printer properties.

1. For your operating system, do the following:

WINDOWS 2000	WINDOWS XP
Select <b>Start &gt; Settings &gt; Printers.</b>	Select <b>Start &gt; Printers and Faxes.</b>

2. Right-click the printer icon for your printer model.
3. Select **Properties.**
4. Adjust the printer settings appropriately for your printer.

## Customizing Printing Preferences

The Printing Preferences dialog box displays options for setting how your printer will print.

1. For your operating system, do the following:

WINDOWS 2000	WINDOWS XP
Select <b>Start &gt; Settings &gt; Printers.</b>	Select <b>Start &gt; Printers and Faxes.</b>

2. Right-click the printer icon for your printer model.
3. Select **Printing Preferences.**
4. On the **Layout** tab, click **Advanced.**

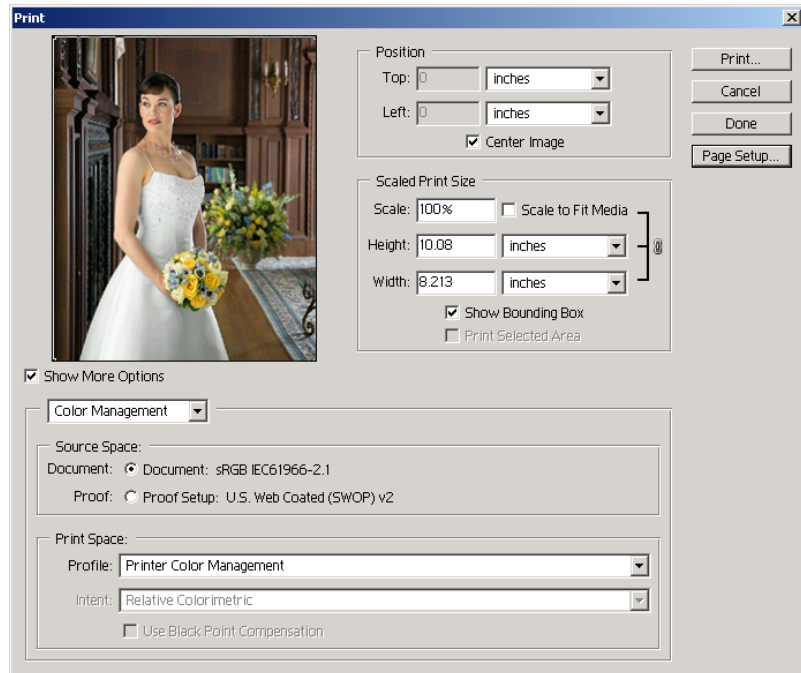
*The Advanced Options dialog box appears.*

5. Adjust the printing preferences appropriately for your printer.

**NOTE:** Changes that you make become the new printer driver defaults.

## Color Management using ADOBE PHOTOSHOP 7.0 or Greater

1. Select **Print with Preview** from the **File** menu.



2. Check **Show More Options**, then select **Color Management**.
3. Set the **Source Space** to **Document**.
4. Set the **Print Space Profile** to **Printer Color Management**.

## Custom Image Composition Packages

You can print multiple copies of an image in different sizes on the same page. For example, a package might contain a 4 x 6 in. (10.16 x 15.24 cm) and two 3.5 x 5 in. (8.89 x 12.7 cm). The page is trimmed to provide individual prints.

Printer drivers for KODAK printers typically provide a number of standard packages. The drivers also let you import custom package files for layouts not included with their standard packages.

### Creating a Custom Package

Custom package files are ASCII text files that you can create with a variety of text-editing software (for example, WINDOWS Notepad).

**IMPORTANT:** *You must save the file with a .kpg extension. You can save the file anywhere on your hard drive.*

The file must conform to the following standard:

```
Type: KPKG<EOL>
Version: 1.0<EOL>
# comments <EOL>
x1, y1, xdim1, ydim1 <EOL>
x2, y2, xdim2, ydim2 <EOL>
.....
xN, yN, xdimN, ydimN <EOL>
```

Type	KPKG
Version	1.0
x1 - xN	Distance (in pixels) from the left of the page to the upper left corner of the image
y1 - yN	Distance (in pixels) from the top of the page to the upper left corner of the image
xdim1 - xdimN	width (in pixels) of the image
ydim1 - ydimN	height (in pixels) of the image

#### NOTES:

- Comments can appear on any line.
- x1 - xN and y1 - yN must be within the range of 0 to 9999.
- xdim1 - xdimN and ydim1 - ydimN must be within the range of 6 - 9999.
- On the Type and Version lines, the only space allowed is between the word Type or Version and the text which follows. See above.
- Each line must terminate with an <EOL> which can be a carriage return <CR>, line feed <LF>, or carriage return line feed <CRLF>.

See the example on the next page.

**Example:**

Type: KPKG

Version: 1.0

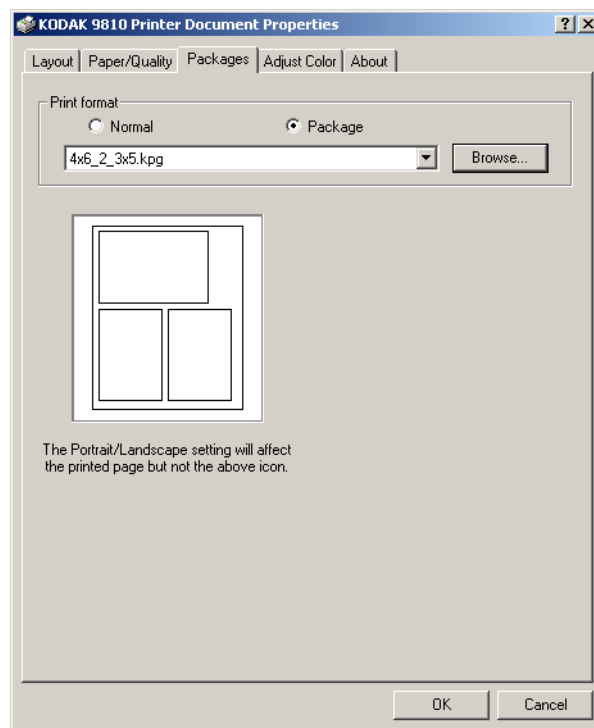
# Custom package for 4 x 6 and 3.5 x 5 prints on an EK9810 8 x 10 sheet

# Recommended Page size - 8 x 10 in.

107, 87, 1800, 1200

107, 1362, 1050, 1500

1232, 1362, 1050, 1500



**Selecting a Custom Package**

1. Using the printer driver's Properties / Packages option, click the **Packages** tab.
2. Click **Browse** and navigate to the .kpg file that you created.
3. Click **OK**.

## Resolving Printing Problems

Errors or problems encountered while printing are displayed in the Status area of the Print Queue.

To view the Print Queue:

- Click the printer icon in the task bar when a job is in the Print Queue.
- Choose **Start > Settings > Printers** (WINDOWS 2000 OS) or **Start > Printers and Faxes** (WINDOWS XP OS). Double-click the printer for the Print Queue you wish to view.

Refer to the following table to resolve errors or problems reported during printing. If the problem persists, contact your Kodak representative for service.

Status Message	Possible Cause	Action
Out of paper - Printing	The printer is out of paper or ribbon. The paper or ribbon is loaded improperly. There is a paper or ribbon jam.	<ul style="list-style-type: none"> <li>• Check that there is paper and ribbon in the printer.</li> <li>• Check that the paper or ribbon is not jammed and is loaded properly. See <a href="#">“Loading the Paper” on page 1-2</a>, and <a href="#">“Loading the Ribbon” on page 1-6</a>.</li> </ul>
Error - Printing	There is a printer problem.	<ul style="list-style-type: none"> <li>• Check the printer operator panel display area for more information.</li> <li>• See <a href="#">“Troubleshooting the Printer” on page 6-1</a>.</li> </ul>
Printing - Wrong ribbon type, load Matte	The printer has Glossy ribbon loaded but the job requested Matte.	<ul style="list-style-type: none"> <li>• Wait for the printer to stop printing and become Ready. Load Matte ribbon of the proper size in the printer.</li> <li>• Cancel the job from the Print Queue and resubmit, requesting Glossy ribbon.</li> </ul>
Printing - Wrong ribbon type, load Glossy	The printer has Matte ribbon loaded but the job requested Glossy.	<ul style="list-style-type: none"> <li>• Wait for the printer to stop printing and become Ready. Load Glossy ribbon of the proper size in the printer.</li> <li>• Cancel the job from the Print Queue and resubmit, requesting Matte ribbon.</li> </ul>

Status Message	Possible Cause	Action
Printing - Wrong ribbon size, load 8 x 12L	The printer has 8 x 10S ribbon loaded but the job requires 8 x 12L.	<ul style="list-style-type: none"><li>• Wait for the printer to stop printing and become Ready. Load 8 x 12L ribbon of the proper type in the printer.</li><li>• Cancel the job from the Print Queue and resubmit the job with a smaller page size.</li></ul>

NOTE: When the cover is open while you are replacing or checking the paper or ribbon, the Print Queue displays an Error-Printing status and an error message. These disappear once you close the door.

## Uninstalling the Printer and Printer Driver

This procedure will uninstall the printer driver and Diagnostic tool.

NOTE: You must have Administrator privilege to uninstall the printer and printer driver.

1. For your operating system, do the following:

WINDOWS 2000	WINDOWS XP
<ul style="list-style-type: none"> <li>• Select <b>Start &gt; Settings &gt; Printers</b>.</li> </ul> <p><i>The Printers dialog box appears.</i></p>	<ul style="list-style-type: none"> <li>• Select <b>Start &gt; Printers and Faxes</b>.</li> </ul> <p><i>The Printers and Faxes dialog box appears.</i></p>

2. Right-click the printer you want to remove and select **Delete**.
3. Click **Yes** to delete the printer.
4. Select **File > Server Properties**.
5. Select **Drivers**.
6. Highlight the printer driver you want to remove and click **Remove**.
7. Click **Yes** to delete the printer driver.
8. Click **Close**.
9. Select **Start > Settings > Control Panel > Add/Remove Programs > KODAK 9810 Digital Photo Printer Software** and follow the directions to completely remove the installed software.

NOTE: This also removes the Diagnostic tool.





---

# 3 Calibrating the Printer

The KODAK Calibration Utility (calibration utility) allows the KODAK Photo Printer to produce the best possible color response. Printer calibration adjusts the response of the printer so that a specific data input value yields a specific color density output. When a printer is properly calibrated, it generates the correct density for each given data value.

Your KODAK Photo Printer is shipped with default factory calibration values. You should be able to set up your printer and begin printing right away without having to first calibrate the printer. However, if you are dissatisfied with your prints, follow the steps in this chapter to calibrate your printer.

## Installing the Calibration Software

1. Insert the CD that came with the printer into your CD-ROM drive.  
*The CD Browser launches automatically. If it does not, double-click the **Kodak9810.exe** file in the CD root directory.*
2. Select your language.
3. Click **Software**.

NOTE: Before installing the software, read the Calibration Software Readme file for important information and updates about the software.

4. Click **Calibration Software** to start the installer.
5. Follow the on-screen instructions to install the calibration software.

## Using the Easy Cal Calibration Utility

Before you use the calibration utility, make sure you are familiar with how your KODAK Photo Printer operates.

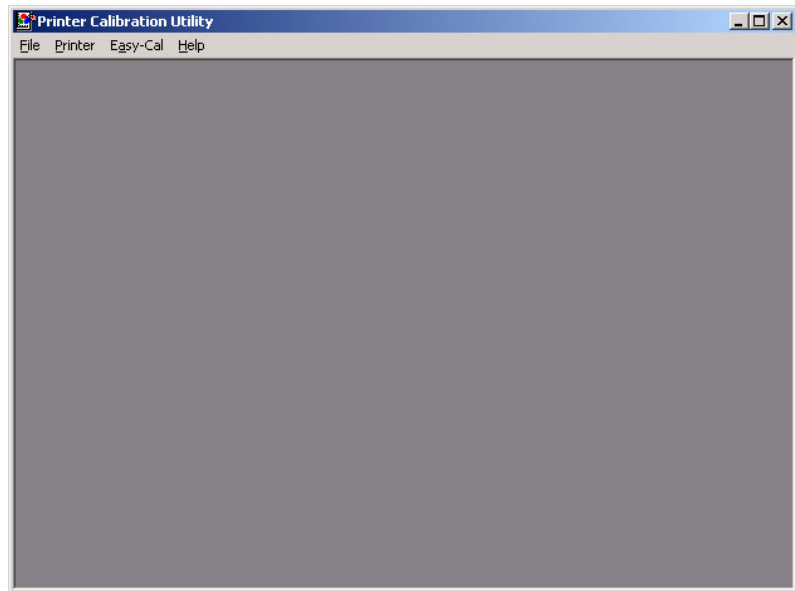
Calibrate your printer whenever the color balance of prints does not look right. You may also want to calibrate your printer after it has been serviced.

For instructions on instrumented calibration (requires a densitometer) go to [www.kodak.com](http://www.kodak.com), then search for support information on the KODAK PROFESSIONAL 9810 Digital Photo Printer.

Easy Cal is a five-step process that quickly calibrates your printer using the Visual Gray Balance method. Before using Easy Cal, start the calibration utility.

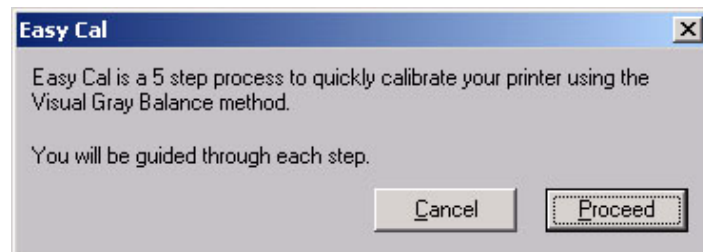
1. Select **Start > Programs > KODAK Calibration Utility 1.1.2 > KODAK Calibration Utility 1.1.2.**

*The following screen appears.*



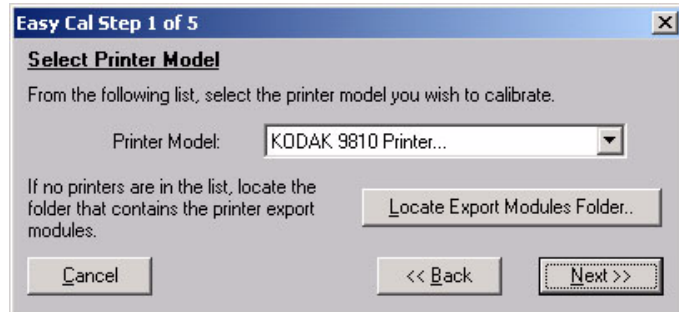
2. Select **Easy-Cal > Begin.**

*The following dialog box appears.*



3. Click **Proceed**.

*The following dialog box appears.*

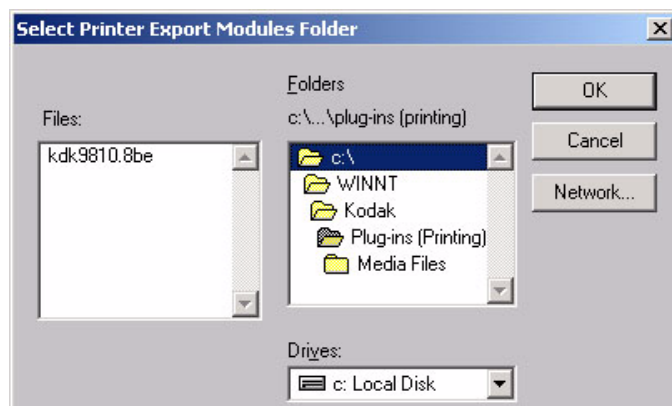


## 4. Select your printer from the Printer Model list.

- If the printer you want to calibrate is on the list, select it and go to Step 8.
- If the printer you want to calibrate does not appear in the list, locate and select the export module for that printer. Continue with Step 5.

5. Click **Locate Export Modules Folder**.

*A file selection dialog box appears.*



## 6. Browse to the Plug-ins folder:

**WINDOWS XP: C:WINDOWS/Kodak/Plug-Ins (Printing)**

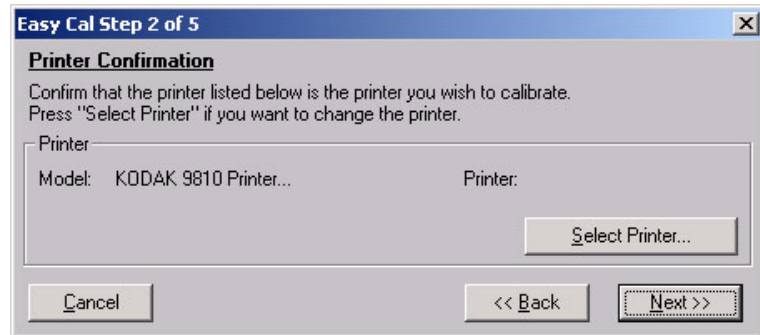
**WINDOWS 2000: C:WINNT/Kodak/Plug-Ins (Printing)**

**NOTE:** The exact path to the export module folder may differ depending on your operating system.

7. Select the kdk9810.8be file for the KODAK Photo Printer 9810 model. Click **OK**.

8. Click **Next**.

*The following dialog box appears.*

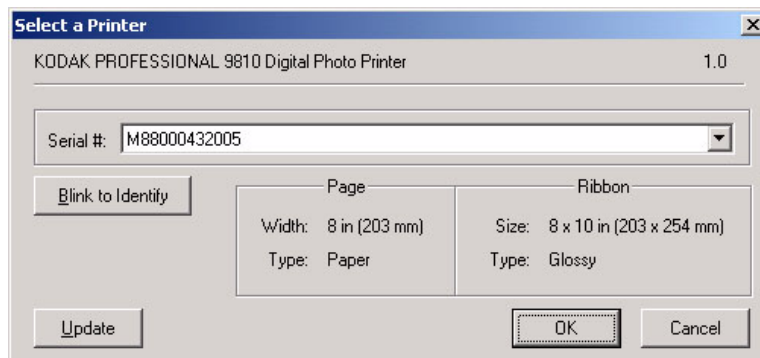


9. Confirm that the printer model listed is the printer you want to calibrate.

- If the printer you want to calibrate is listed, go to Step 13.
- If you want to calibrate a different printer than the one that is listed, continue with Step 10.

10. Click **Select Printer**.

*The following dialog box appears.*



**NOTE:** The appearance of this dialog box may vary, depending on your printer setup and the media file you selected.

11. From the **Serial #:** list, select your printer's serial number.

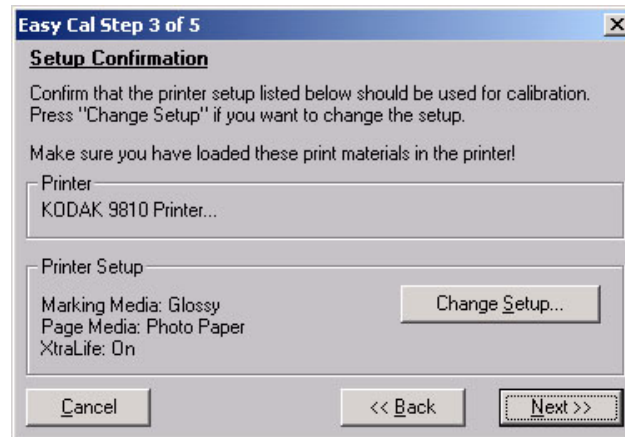
**NOTE:** Click **Blink to Identify** to locate a specific printer if you have more than one printer. The Ready light on the operator panel of the printer will blink five times.

Click **Update** if you want to update the printer information on the dialog box.

12. Click **OK** to close the dialog box.

13. Click **Next**.

*The following dialog box appears.*

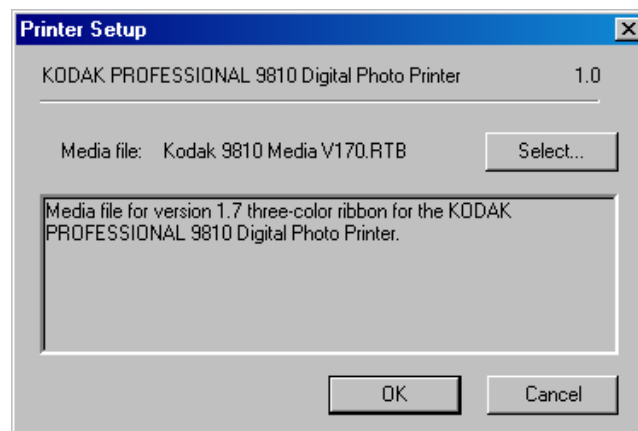


## 14. Confirm that the printer setup listed is the printer setup you want to use for calibration.

- If the printer setup listed is the correct printer setup for your printer, go to Step 19.
- If you want a different printer setup than what is listed, continue with Step 15.

15. Click **Change Setup**.

*The following dialog box appears.*



16. Click **Select** to change the media file for your printer.

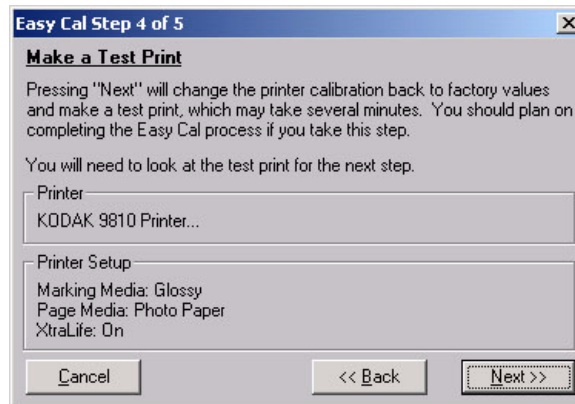
*A file selection dialog box appears.*

17. Select the media file and then click **OK**.

18. Click **OK** to close the dialog box.

19. Click **Next**.

*The following dialog box appears.*

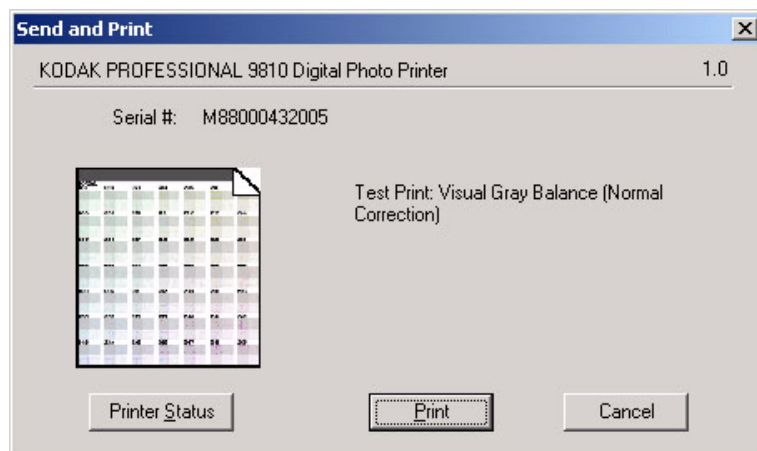


20. Confirm that the Printer and Printer Setup information are correct.

- If the information is not correct and you have more than one media file, click **Back** and go to Step 15.
- If the information is correct, click **Next** to send the default table to the printer.

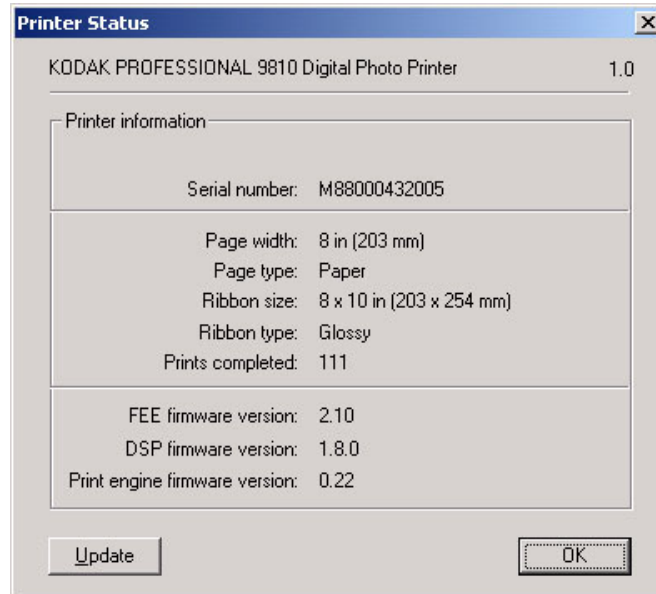
NOTE: The existing calibration table in the printer is overwritten.

*The following dialog box appears.*



21. Click **Printer Status** to find out more information about your printer.

*The following dialog box appears.*



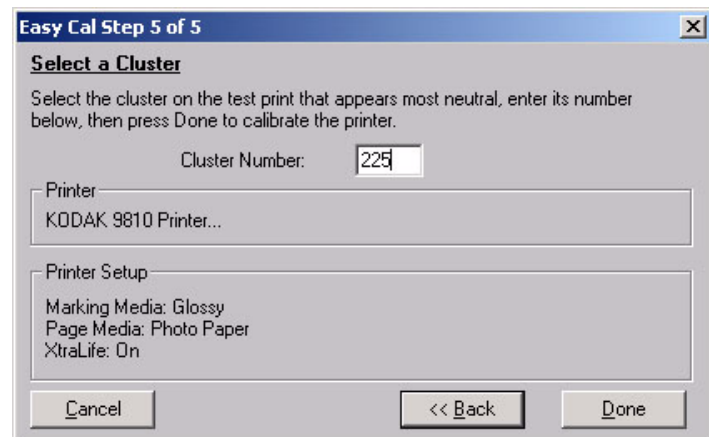
**NOTE:** Click **Update** if you want to update the information on the Printer Status dialog box. You may need to do this if your printer is accidentally turned off.

22. Click **OK** to close the dialog box.

23. Click **Print**.

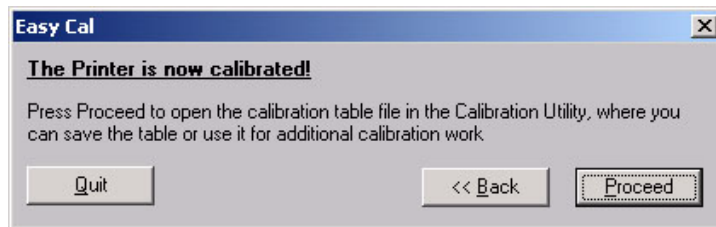
*The information is processed and the calibration test print is printed on the specified printer.*

*The following dialog box appears.*



24. Look at the test print and determine which cluster appears the most neutral (has the least amount of color).
25. Enter the number of the most neutral cluster in the Cluster Number box (range 201-249).
26. Click **Done**.

*The printer calibration begins. When calibration is complete, the following dialog box appears.*



27. Click **Quit** to close the Calibration Utility. Your printer is now calibrated.

**NOTE:** The neutral cluster should be in the center of the test print (#225) if the printer is properly calibrated.

## Uninstalling the Calibration Software

You can remove the calibration software from your computer in two ways:

- Select **Start > Programs > KODAK Calibration Utility 1.1.2 > Uninstall KODAK Calibration Utility 1.1.2** and follow the directions to uninstall the software.
- Select **Start > Settings > Control Panel > Add/Remove Programs > KODAK Calibration Utility** and follow the directions to remove the software.



## Resolving Calibration Error Messages

Refer to the following table to resolve errors reported during the printer calibration process. If the problem persists, contact your Kodak representative for service.




Error Message	Possible Cause	Action
The printer is off-line.	The Operator Control Panel is being used.	<ul style="list-style-type: none"> <li>• Exit out of the Operator Control Panel.</li> <li>• Restart the calibration process.</li> </ul>
The printer's door is open.	The printer cover is open.	<ul style="list-style-type: none"> <li>• Be sure the printer cover is closed securely.</li> </ul>
The printer is out of ribbon.	The printer is out of ribbon or the ribbon is loaded improperly.	<ul style="list-style-type: none"> <li>• Check that there is ribbon in the printer.</li> <li>• Check that ribbon is loaded properly. See <a href="#">"Loading the Ribbon"</a> on page 1-6.</li> </ul>
The printer is out of paper.	The printer is out of paper or the paper is loaded improperly.	<ul style="list-style-type: none"> <li>• Check that there is paper in the printer.</li> <li>• Check that paper is loaded properly. See <a href="#">"Loading the Paper"</a> on page 1-2.</li> </ul>
The printer's paper is jammed.	There is a paper jam.	<ul style="list-style-type: none"> <li>• Clear the paper jam.</li> <li>• Check that paper is loaded properly. See <a href="#">"Loading the Paper"</a> on page 1-2.</li> </ul>
The printer's cutter is jammed.	The cutter did not move completely to one side.	<ul style="list-style-type: none"> <li>• Turn the printer off.</li> <li>• Check the paper path for a jam.</li> <li>• Turn the printer on.</li> </ul>
The printer's ribbon failed to advance.	The printer could not advance the ribbon to the appropriate patch color.	<ul style="list-style-type: none"> <li>• Check that the ribbon is loaded properly. See <a href="#">"Loading the Ribbon"</a> on page 1-6.</li> <li>• Turn the printer off, then on.</li> </ul>
Invalid ribbon barcode type has been read.	The printer could not read the barcode on the ribbon.	<ul style="list-style-type: none"> <li>• Check that the ribbon has a barcode on it. Replace the ribbon, if necessary.</li> <li>• Check that ribbon is loaded properly. See <a href="#">"Loading the Ribbon"</a> on page 1-6.</li> </ul>



---

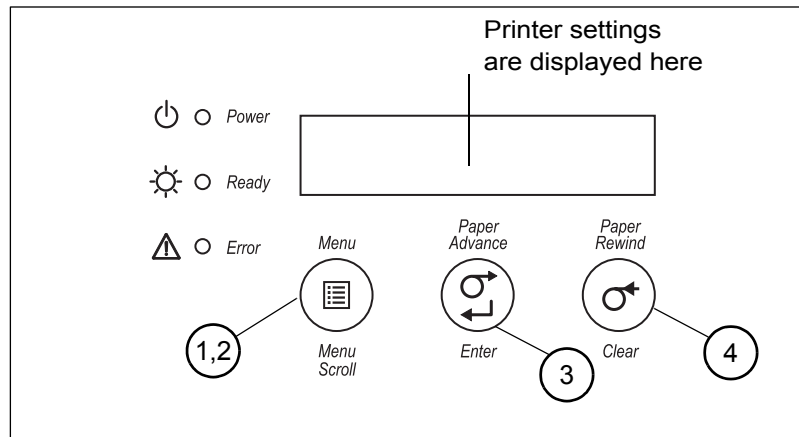
# 4 Operating the Printer

## Understanding the Operator Panel Lights

Light	Color	Printer Status
 Power	Orange	The printer power is on.
 Ready	Green	The printer is ready to make prints.
 Error	Red	An error has occurred.

## Using Setup Mode to Review Printer Settings

Use the operator panel to review printer settings in Setup mode.



1. Press **Menu** to enter Setup Mode.
2. Press **Menu Scroll** repeatedly to scroll through the printer settings.

3. Press **Enter** to initiate an action
4. Press **Clear** to accept a change or exit Setup Mode.

## Accessing the Printer Settings

Press **Menu Scroll** repeatedly to scroll through the printer settings in the following order.

Printer Setting	Operator Panel Display	Action Required
Printer ready	Ready	None. The printer is on and ready to make prints.
Making a test print	Test Print Mode	Press <b>Enter</b> to enter test print mode. See <a href="#">“Making a test print”</a> .
Check remaining media	Remain = XXX/YYY	None. XXX represents the number of prints remaining out of the total possible (YYY) for the media currently installed.
Checking the printer total print count	Printed = XXXXX	None. XXXXX represents the total number of prints made since the printer was manufactured. This counter cannot be reset.
Checking the FEE firmware version	FEE Firm X.XX	None. The printer FEE firmware version is displayed.
Checking the DSP firmware version	DSP Firm X.XX	None. The printer DSP firmware version is displayed.
Checking the engine firmware version	ENG Firm X.XX	None. The engine firmware version is displayed.
Setting the operator control panel (OCP) language	Language	<ol style="list-style-type: none"> <li>1. Press <b>Enter</b>.</li> <li>2. Select the language.</li> </ol>
Setting the standby timeout	Standby Timeout	<ol style="list-style-type: none"> <li>1. Press <b>Enter</b>.</li> <li>2. Select the standby timeout (Never, 30 minutes, 60 minutes, 120 minutes, 480 minutes).</li> </ol>
Setting the level of matte lamination	Matte Level	<ol style="list-style-type: none"> <li>1. Press <b>Enter</b>.</li> <li>2. Select the level of matte lamination (-4, -3, -2, -1, 0, 1, 2, 3, 4)</li> </ol>

## Working in Test Print Mode

### Making a test print

Make a test print to check that the printer is installed and set up correctly.

1. Press **Menu** once until Test Print Mode appears.
2. Press **Enter** once until Pattern appears.
3. Press **Enter** once to select the test print type.
4. Press **Menu** to cycle through the available test print types.
5. Press **Enter** to print the selected test print.

*When printing is complete, the printer returns to Ready mode.*

### Changing the quantity of test prints

1. Press **Menu** once until Test Print Mode appears.
2. Press **Enter** once until Pattern appears.
3. Press **Menu** once until Count appears.
4. Press **Enter** once to select the test print count.
5. Press **Menu** to cycle through the number of test print copies you want.
6. Press **Clear** to accept the value you just selected.

NOTE: The value you selected is the number of test prints you will receive until the printer is turned off and turned back on.

7. Press **Menu** once until Pattern appears.
8. Continue with step 3 of [“Making a test print” on page 4-3](#).



---

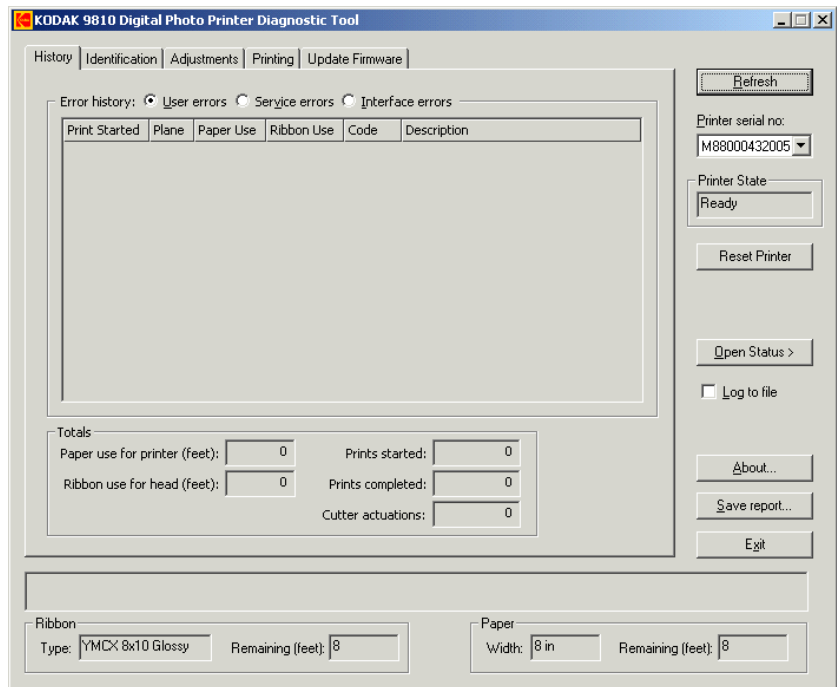
# 5 Using the Diagnostic Tool

The Diagnostic tool was installed when you installed the printer driver.

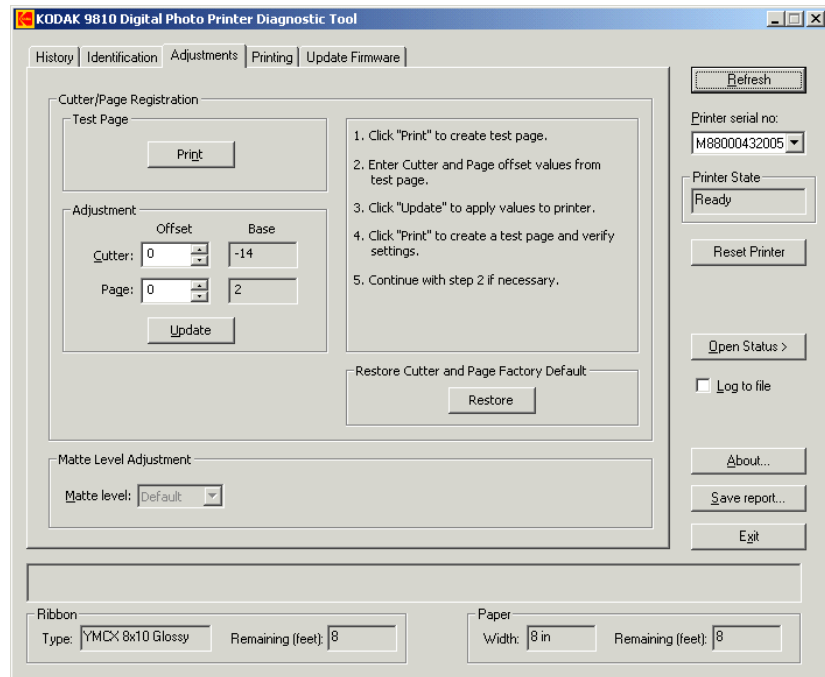
## Adjusting Print Head and Paper Cutter Registration

You may occasionally need to adjust print head and cutter registration if the page isn't centered properly.

1. Click **Start > Programs > KODAK 9810 Printer > Diagnostic Tool**.

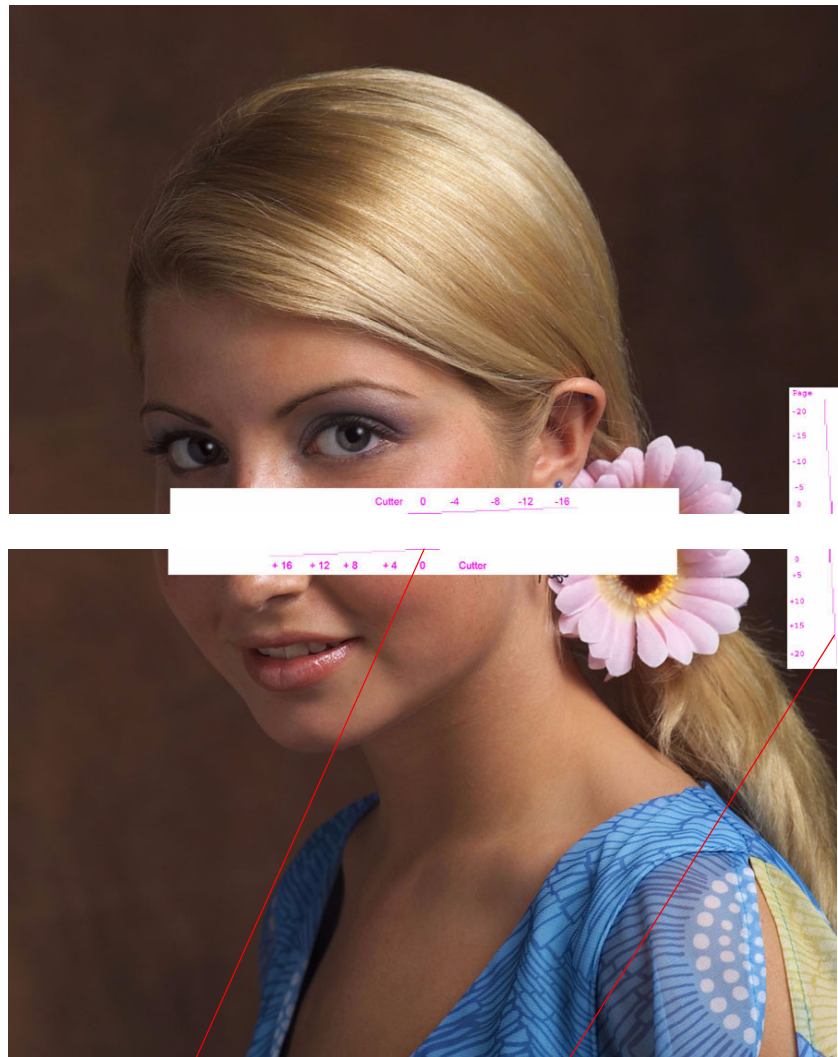


2. Select the **Printer serial no.**
3. Click the **Adjustments** tab.



4. Click **Print** to print a test page.





Cutter offset

Page offset

5. Place the two prints together and note the number closest to the following occurrences:
  - Cutter offset: the point at which the cut intersects the horizontal line
  - Page offset: the point at which the right side of the page intersects the vertical line
6. Enter the Cutter offset and Page offset values. Click **Update**.
7. Click **Print** to print another test page and verify the settings.
8. Repeat Steps 2 - 7, if necessary.

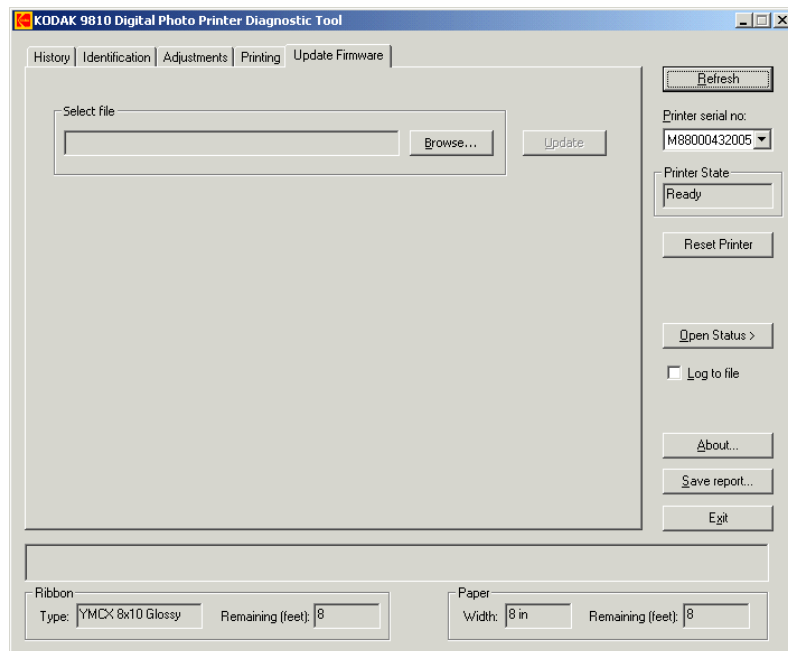
NOTE: Ideally the cutter offset and the page offset should be at zero.

## Updating Firmware

You may occasionally need to update your printer's firmware.

**IMPORTANT:** *Do not turn off the printer or remove any cables during the download process. If you do, the download will not complete and the previous firmware version will be used.*

1. Go to [www.kodak.com](http://www.kodak.com).
2. Search for the KODAK PROFESSIONAL 9810 Digital Photo Printer.
3. Download the firmware file to your computer hard drive.
4. If possible, have your printer in the Ready state.
5. Click the **Update Firmware** tab.



6. Click **Browse**.
7. In the **File Open** dialog box, navigate to the folder containing the firmware (.rom) file that was downloaded in Step 3.
8. Select the firmware file.
9. Click **Update**.

*A message indicates the approximate download time and an elapsed time indicator shows the progress of the download.*

10. If the download was successful, wait for the printer to initialize and for the Ready light to appear.

*If the download was not successful, power cycle the printer. If repeated attempts are unsuccessful, obtain service for your printer.*

---

# 6 Troubleshooting the Printer

Refer to the following table to resolve errors or problems reported on the printer operator panel. If the problem persists, contact your Kodak representative for service.

Message	Possible Cause	Action
Cover Open	The printer cover is open.	<ul style="list-style-type: none"><li>• Be sure the printer cover is closed securely.</li></ul>
Paper Empty	The printer is out of paper or the paper is loaded improperly.	<ul style="list-style-type: none"><li>• Check that there is paper in the printer.</li><li>• Check that the paper is loaded properly. See <a href="#">“Loading the Paper” on page 1-2.</a></li></ul>
Check Paper	There is a paper jam.	<ul style="list-style-type: none"><li>• Clear the paper jam.</li><li>• Check that the paper is loaded properly. See <a href="#">“Loading the Paper” on page 1-2.</a></li></ul>
Check Ribbon	The printer is out of ribbon.	<ul style="list-style-type: none"><li>• Check that there is ribbon in the printer.</li><li>• Check that the ribbon is loaded properly. See <a href="#">“Loading the Ribbon” on page 1-6.</a></li></ul>
Incorrect Ribbon	The printer cannot detect the ribbon or an improper ribbon is loaded.	<ul style="list-style-type: none"><li>• Check that the ribbon has a barcode on it and the barcode is not damaged.</li><li>• Check that the ribbon is loaded properly. See <a href="#">“Loading the Ribbon” on page 1-6.</a></li></ul>
Cutter Jam	The cutter did not move completely to one side.	<ul style="list-style-type: none"><li>• Turn the printer off.</li><li>• Check the paper path for a jam.</li><li>• Turn the printer on.</li></ul>
Cooling	The print head is too hot to print.	<ul style="list-style-type: none"><li>• Wait. The printer will be ready to print when the head reaches the proper temperature.</li></ul>

Message	Possible Cause	Action
Warming	The print head is too cold to print.	<ul style="list-style-type: none"><li>• Wait. The printer will be ready to print when the head reaches the proper temperature.</li></ul>
Service XX.YY.ZZ	Fatal error XX.YY.ZZ has occurred.	<ul style="list-style-type: none"><li>• Turn the printer off, then on.</li><li>• When calling service, report the error number XX.YY.ZZ.</li></ul>

---

# Appendix A: Important Printer Information

## Printer Specifications

Dimensions	Width	17 in. (432 mm)
	Depth	19 in. (483 mm) - without Print Catcher 25 in. (635 mm) - with Print Catcher
	Height	13 in. (330 mm)
Weight (without ribbon and paper)		18 kg (40 lbs)
Ambient Operating Temperature		15 - 35°C (59 - 95°F)
Relative Humidity		20 - 80% (non-condensing)
Voltage		100 - 240 V AC
Current rating		5 A
Frequency		50 / 60 Hz
Print sizes		8 x 10 in. (203 x 254 mm) 8 x 12 in. (203 x 305 mm)

## ENERGY STAR Partner



As an ENERGY STAR Partner, Eastman Kodak Company has determined that this product meets the ENERGY STAR guidelines for energy efficiency.



---

# Appendix B: Safety and Regulatory Information

## Important Safety Information



### CAUTION:

Use of controls or adjustments, or performance of procedures other than those specified in this manual may result in injury and/or damage to the printer.

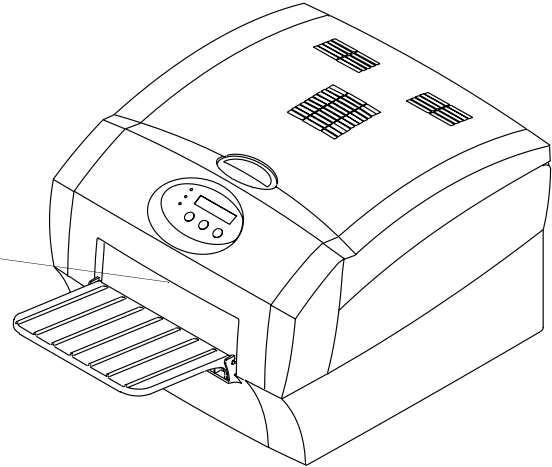
- The power outlet should be easily accessible and installed near the printer.
- Position the power cable so that it cannot be pulled on or tripped over.
- Never allow the power cable to contact hot surfaces.
- The power outlet must be grounded. An ungrounded outlet can cause fire, electric shock, or harmful interference to nearby electrical devices.
- Use only the power cable provided with the printer.
- Do not operate the printer with a damaged power cable.
- Always unplug the power cable from the printer before cleaning or when the printer is not in use.
- If the printer has been dropped or damaged, be sure a qualified service person examines the printer before you use it.
- Do not block the filter openings on the printer cabinet.
- Do not expose the printer to moisture or water.
- Do not allow any foreign objects or liquids to fall or spill inside the printer. Fire or electric shock could result.
- The thermal head becomes extremely hot during normal operation. Do not touch it.

## Safety Labels

Please observe the important safety warnings that are posted on the printer.



**WARNING SHARP EDGES**  
Keep hands and fingers away.



## Regulatory and Safety Compliance

### Safety

Complies with UL 60950-1 First Edition—CAN/CSA C22.2 No. 60950-1-3 First Edition

EN 60950-1

IEC 60950

Tested for Norwegian IT Power systems 240V phase to phase

### Radio frequency interference

**NOTE:** This equipment has been tested and found to comply with the limits for a Class A digital device, pursuant to part 15 of the FCC rules. These limits are designed to provide reasonable protection against interference when the equipment is operated in a commercial environment. This equipment generates, uses, and can radiate radio frequency energy and, if not installed and used in accordance with the instruction manual, may cause interference to radio communications. Operation of this equipment in a residential area is likely to cause interference in which case the user will be required to correct the interference at his or her own expense.

Requirements of the EMC directive 89/336/EEC were met through compliance with the following:

- EN 55022: 98 (class A)
- EN 55024: 98 ITE Immunity includes the following:  
EN61000-4-2 ESD



EN61000-4-3 Radiated rf immunity

EN61000-4-4 EFT

EN61000-4-5 Surge

EN61000-4-6 Conducted rf immunity

EN61000-4-11 Voltage dips and interruptions

- EN 61000-3-2 Harmonics
- EN 61000-3-3 Flicker

"Changes or modifications not expressly approved by the party responsible for compliance could void the user's authority to operate the equipment."

## Noise emission

The operator-position noise emission value is 58 dB(A).\*

\* Average value specified in accordance to JIS Z873.

## Disposal

This product contains a small amount of lead in the solder on the circuit boards. Disposal of this material may be regulated due to environmental considerations. For disposal or recycling information, please contact your local authorities. In the USA, contact the Electronics Industry Alliance at <http://www.eiae.org>.



In the European Union, this symbol indicates that when the last user wishes to discard this product, it must be sent to appropriate facilities for recovery and recycling. Contact your local Kodak representative or refer to [www.kodak.com/go/recycle](http://www.kodak.com/go/recycle) for additional information on the collection and recovery programs available for this product.



---

# Index

## A

air flow clearances, 1-1

## C

cables, connecting, 1-8  
calibrating the printer, 3-1  
calibration errors, 3-9  
calibration software  
    installing, 3-1  
    uninstalling, 3-8  
calibration utility, using, 3-2  
connecting cables, 1-8  
customizing printer properties, 2-3

## D

diagnostic tool, 5-1  
disposal, B-3

## E

error messages, calibration, 3-9

## F

firmware, updating, 5-4

## H

humidity, printer specifications, A-1

## I

installing  
    calibration software, 3-1  
    paper, 1-2  
    printer driver, 2-2  
    ribbon, 1-6

## L

labels, safety, B-2  
loading  
    paper, 1-2  
    ribbon, 1-6

## N

noise emission spec, B-3

## O

operator panel  
    error/red light, 4-1  
    language, 4-2  
    making a test print, 4-2  
    power/orange light, 4-1  
    printer settings, 4-2  
    Ready message, 4-2  
    ready/green light, 4-1  
    setup mode, 4-2  
    standby timeout, 4-2

## P

paper cutter and print head registration, adjusting, 5-1  
paper, loading, 1-2  
power  
    cable, 1-8  
    requirements, A-1  
    turning on, 1-9  
preferences, 2-3  
print head and paper cutter registration, adjusting, 5-1  
printer  
    disposal, B-3  
    operating, 2-1, 4-1  
    preferences, customizing, 2-3  
    properties, customizing, 2-3  
    setting up, 1-1  
    settings, 4-1  
    specifications, A-1  
    test print, 4-2  
    troubleshooting, 6-1  
printer driver  
    installing, 2-2  
    uninstalling, 2-9  
printing problems, resolving, 2-7  
product disposal, B-3  
properties, 2-3

### R

radio frequency compliance, B-2  
Ready message, operator panel, 4-2  
recycling, B-3  
ribbon, loading, 1-6

### S

safety  
    compliance, B-2  
    tips, B-1  
    warning labels, B-2  
setting up the printer, 1-1  
setup mode, 4-1  
software  
    installing  
        calibration software, 3-1  
        printer driver, 2-2  
USB cable, connecting, 1-8

    uninstalling, 2-9, 3-8  
specifications  
    printer, A-1  
switch, power, 1-9

### T

temperature  
    printer specifications, A-1  
test print, making, 4-3  
troubleshooting the printer, 6-1

### U

uninstalling  
    calibration software, 3-8  
    printer driver, 2-9  
updating firmware, 5-4  
USB cable, connecting, 1-8