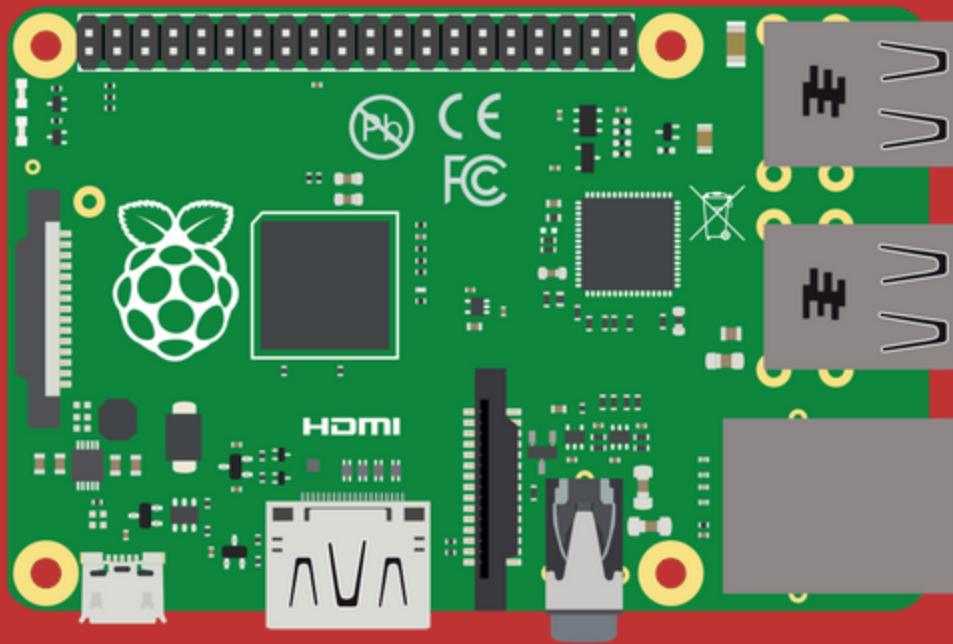


# Kodi on Raspberry Pi



The Only Tutorial You Will Ever Need

# Table of contents

## Step 1: Setup

- Configure weather settings
- Install MPEG-2 and VC1 video codecs
- Set up a media library
- Create playlists and filters

## Step 2: Integrate

- Watch videos with YouTube
- Enjoy HiFi music with Tidal
- Install PVR back-end
- Enable PVR front-end
- Integrate Netflix, Hulu, and other premium channels
- Integrate with Plex

## Step 3: Personalize

- Add user profiles
- Improve your TV viewing experience with LazyTV
- Create main menu items
- Install a new skin (theme)

# Your mission

The purpose of this guide is to help you on becoming proficient in using Kodi on Raspberry Pi with all its many features.

You can use Kodi media center on Raspberry Pi to play movies, TV shows, home videos, PVR & live TV, music, pictures, and games.

**Your mission is to study this collection of ways to use Kodi and then put your knowledge into practice.**



[Share this tutorial on Facebook \(click here\)](#)

**Be sure to share this PDF guide with Kodi fans in your social network!**

# About the author

Media Experience is an online learning platform run by me, Tuukka, to teach technophiles how to create a smarter home media experience without the hassle.

Hi! My name is Tuukka and I'm the founder of Media Experience.

I've been building home theater computers for 16 years.

Since August 2009, I've been running this online resource called Media Experience, where you will find me building and testing the latest HTPC hardware and software so you know exactly how to build your own.



## There is no single manual for doing all of this

The biggest obstacle for setting up HTPC is to make all hardware and software working seamlessly together to create a user-friendly media experience.

Media Experience site will walk you through a step-by-step process to set up your HTPC from scratch, choose the right software, and make it user friendly.

In order to help you to figure out the best hardware and easiest software, I created a course called Media Experience Blueprint that is kept up-to-date.

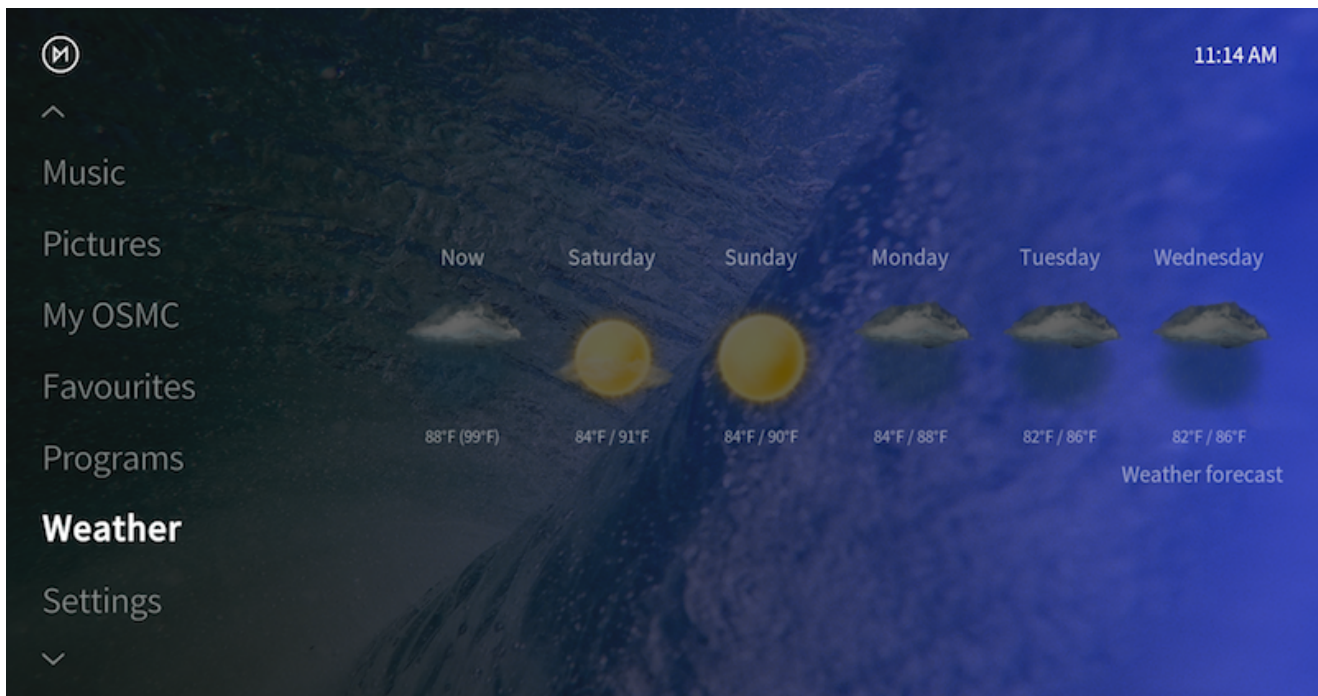
**[Click to get access to My Media Experience Blueprint course](#)**

Good luck with your journey!

Tuukka

# Configure weather settings

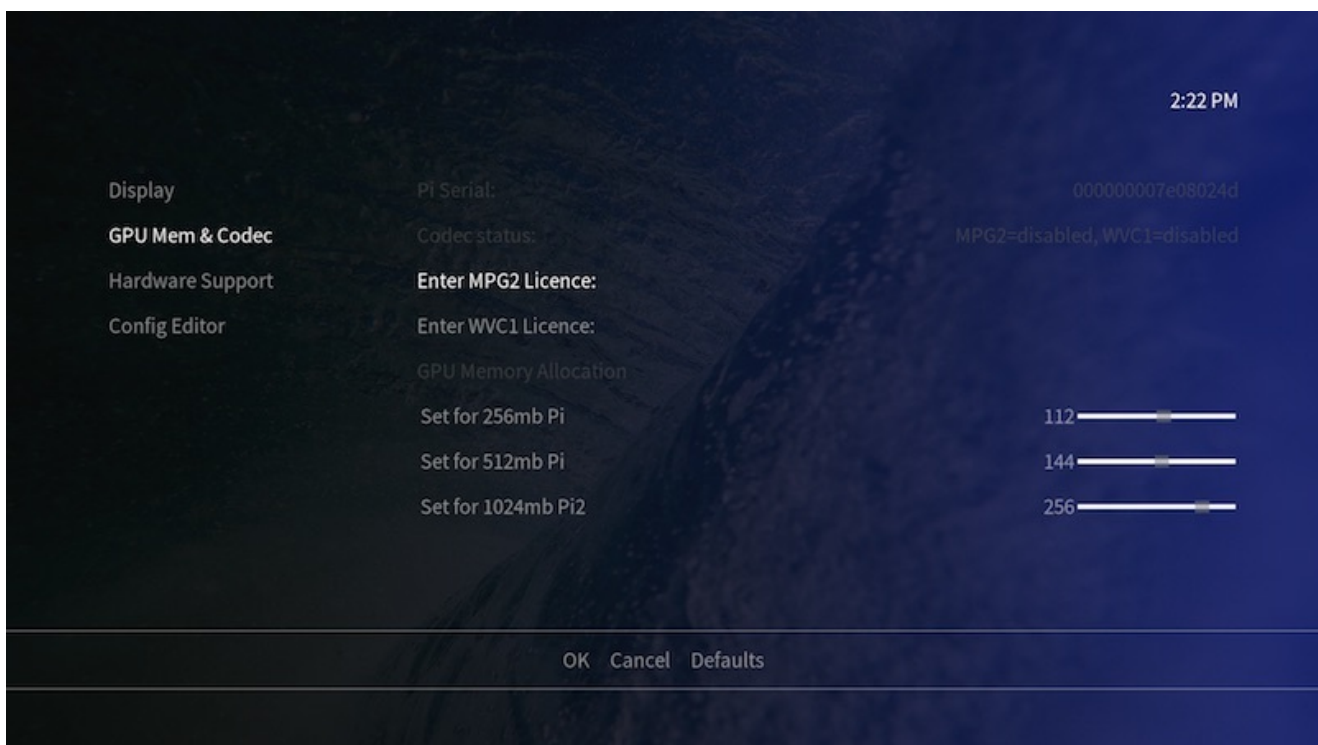
Configure Weather settings for your location.



1. On the home screen, select "Settings" > "Add-on browser" > "Install from repository" > "Weather" and select "Set weather provider".
2. Select your preferred Weather provider. I am using "OpenWeatherMap Extended" Press "Install".
3. Once add-on installation is complete, click on the "OpenWeatherMap Extended" again and select "Configure".
4. Enter the nearest large town to the "Location 1" field. Select "OK", once completed.
5. Click on the "OpenWeatherMap Extended" once again and select "Use".
6. Now, return to the home menu and you will see local weather information.

# Install MPEG-2 and VC1 video codecs

In order to decode and play MPEG-2 and VC1 video files using hardware acceleration, you will need to purchase codec licenses from the Raspberry Pi foundation.

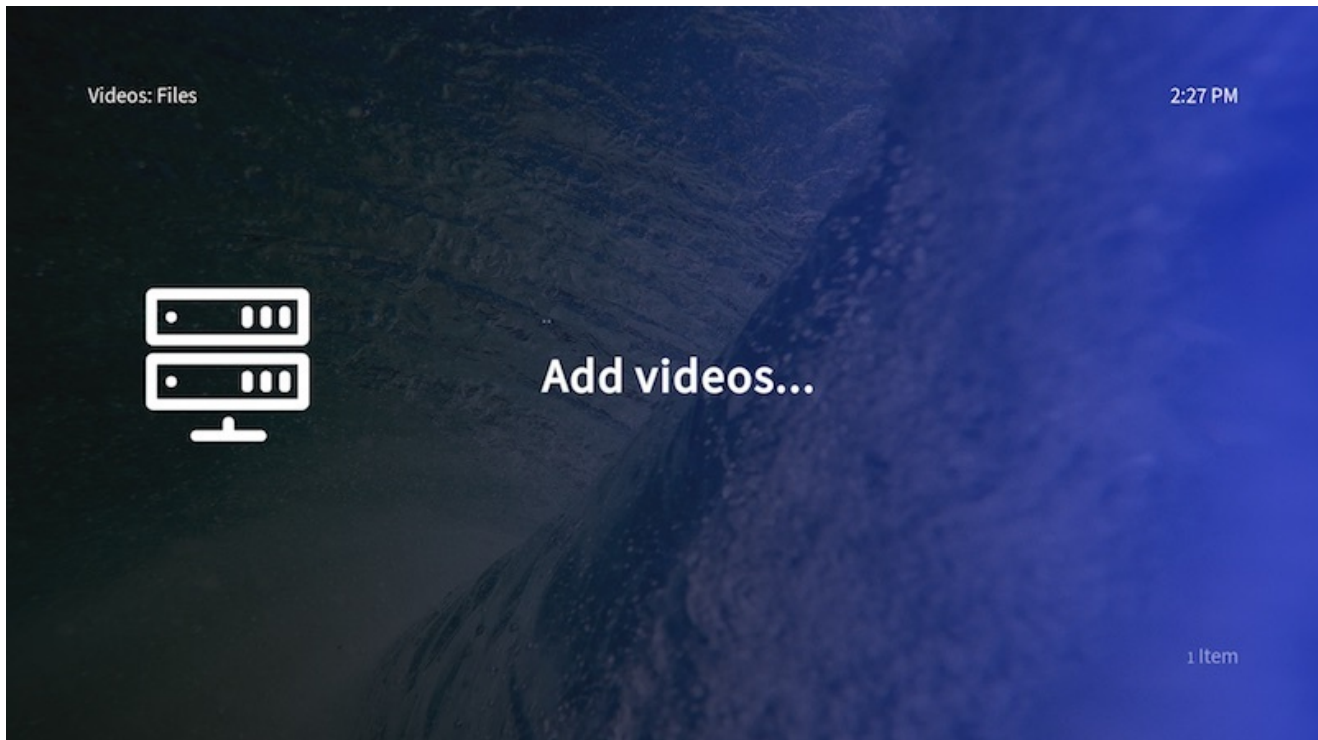


**Install the codecs by following these steps:**

1. Purchase **MPEG-2** and **VC1** codec license keys.
2. You will receive the license key via your email within 72 hours.
3. In OSMC, go to My OSMC > Pi Config > GPU Mem & Codec.
4. Enter the license key from your email to MPEG2 and/or WVC1 license under the Codec status.
5. Reboot the system.

# Set up a media library

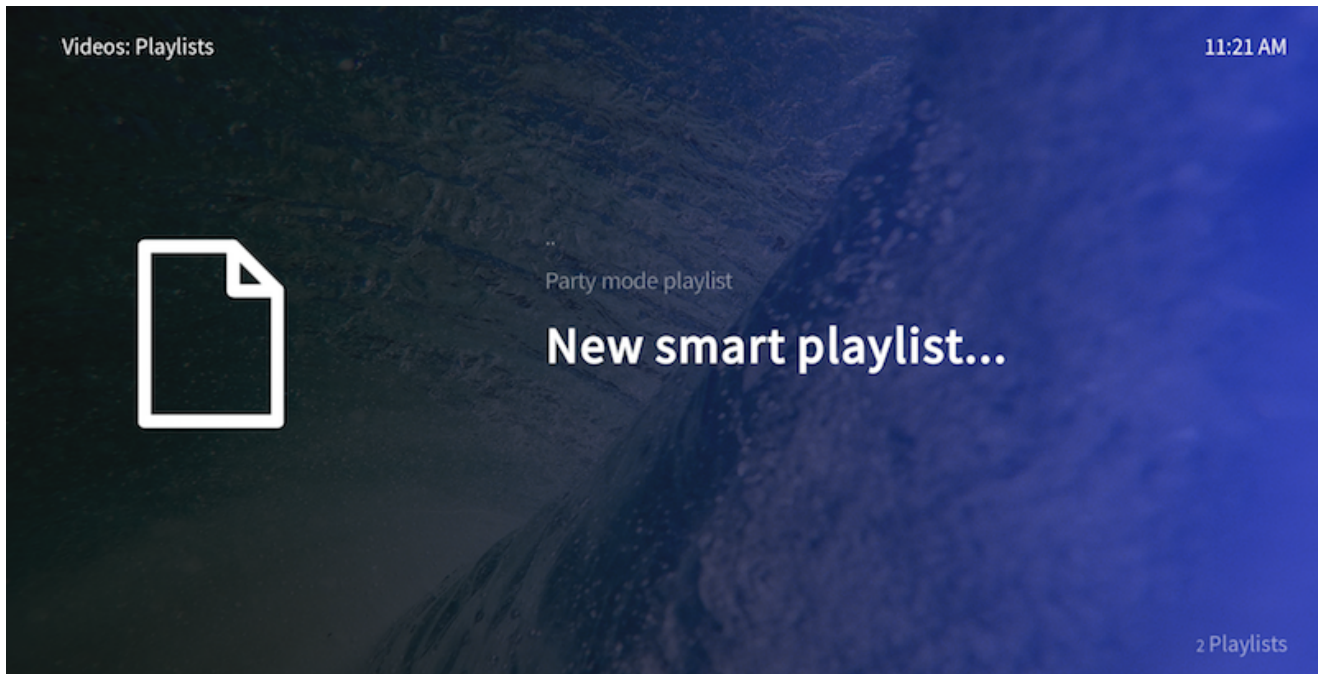
In order to set up your media library, you will need to add sources to video, music, and photo menus.



1. In the videos tab on the home screen, select "Files".
2. Select "Add Videos" and "Browse" in the add video source.
3. Browse to the folder where your media files are stored.
4. Rename the media source, if needed, and select "OK".
5. In the set content window, you can set the type of media. Kodi will automatically scrape the media info after you have set up the media content.
6. If your movies are located in separate folders, enable "Movies are in separate folders that match the movie title".
7. Confirm Yes in the "Change content" question.
8. Now, you can go back to main menu where you will find a new "Movies" menu with your recently added movies.

# Create playlists and filters

Smart playlists are a little-known and used feature. The smart playlist allows you to filter, for example movies based on certain criteria.

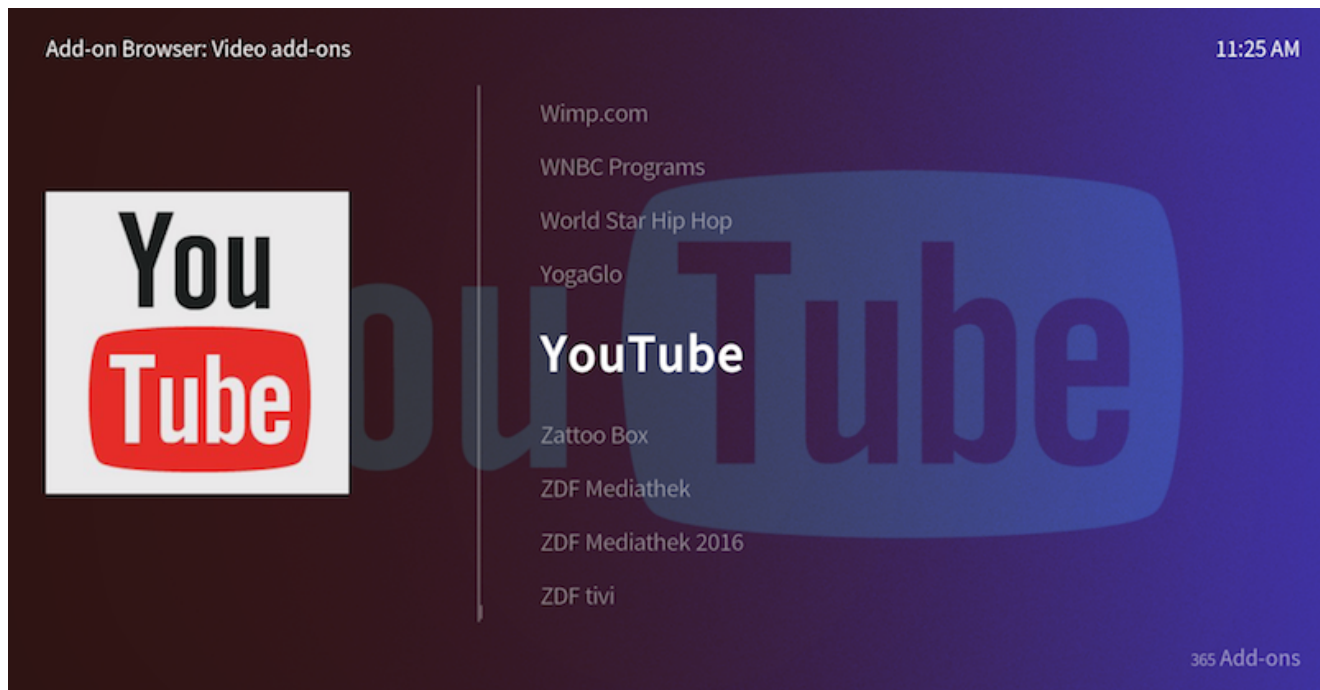


1. Select Videos section in the home screen and choose "Playlists".
2. Select "New smart playlist..."
3. Select the type of the media, for example movie, and enter a title for the smart playlist, such as, "Kids Videos".
4. Click "New rule..." and set the criteria for the filter. For example, I selected all movies where genre is equal to animation.
5. Select "OK" to save your new smart playlist.
6. Now you can see your new playlist in the file browser.



# Watch videos with YouTube

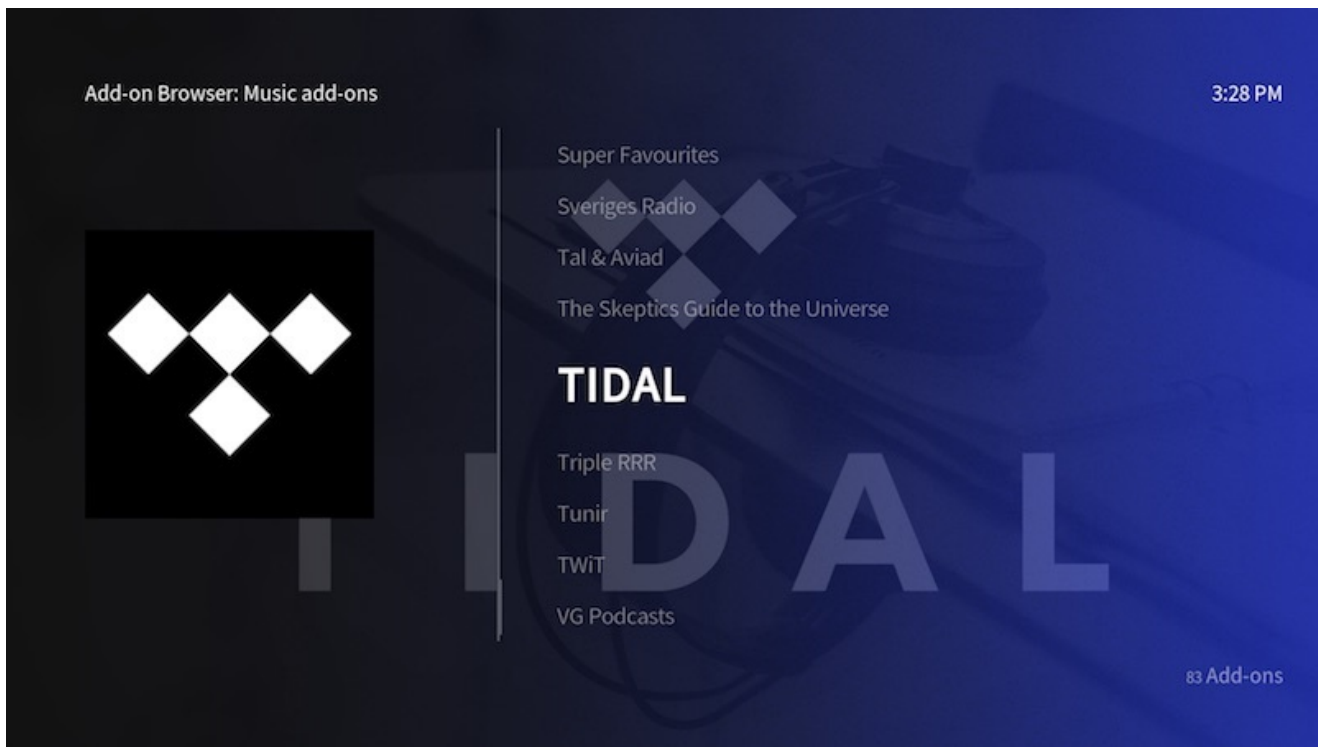
You can install official add-ons by following these steps.



1. Go to "Settings" > "Add-on browser" and select "Install from repository".
2. Go to "Video Add-ons" to, for example, add YouTube add-ons.
3. Click on the add-on and select install to download it.
4. You can go back to Videos menu, and you will find the new YouTube add-on under the Video Add-ons folder.

# Enjoy HiFi music with Tidal

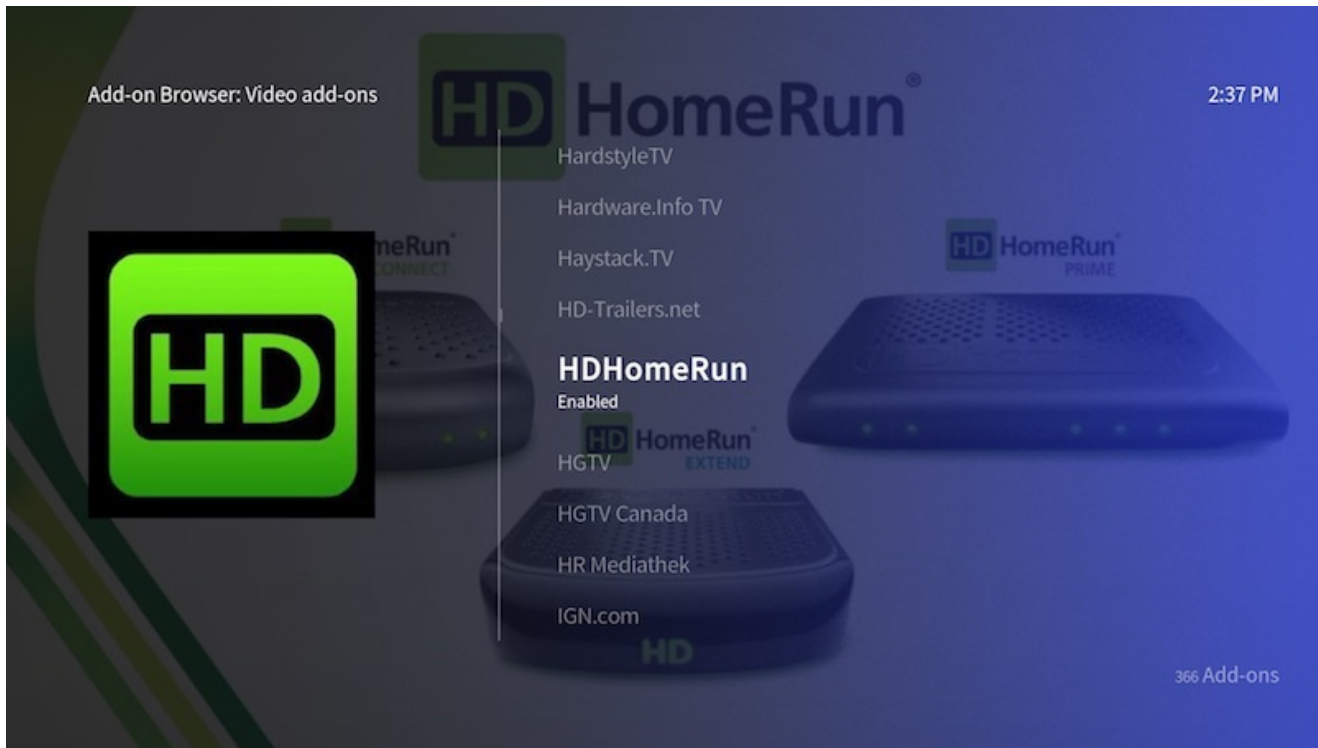
You can install Tidal from the official Kodi add-on repository.



1. Go to "Settings" > "Add-on browser" > "Install from repository" > "Music Add-ons" > Select "Tidal".
2. Select "Install" and Kodi will download and install this add-on. Now, you can go to "Music" > "Music Add-ons" > "Tidal".
3. Press "C-key" to access to the context menu and select "Add-on settings".
4. Select the quality and input your Tidal username and password.
5. In order to add Tidal to the home menu, go to "Settings" > "Appearance" > "Skin – Settings" > "Home – Customize Home Menu".
6. Select "Add" on any existing shortcut and "Choose shortcut" > "Add-on" > "Music Add-on" > "Tidal". Select OK to save settings.
7. Now, you are ready to enjoy high-fidelity music streaming with Tidal from the home screen.

# Add HDHomeRun LiveTV

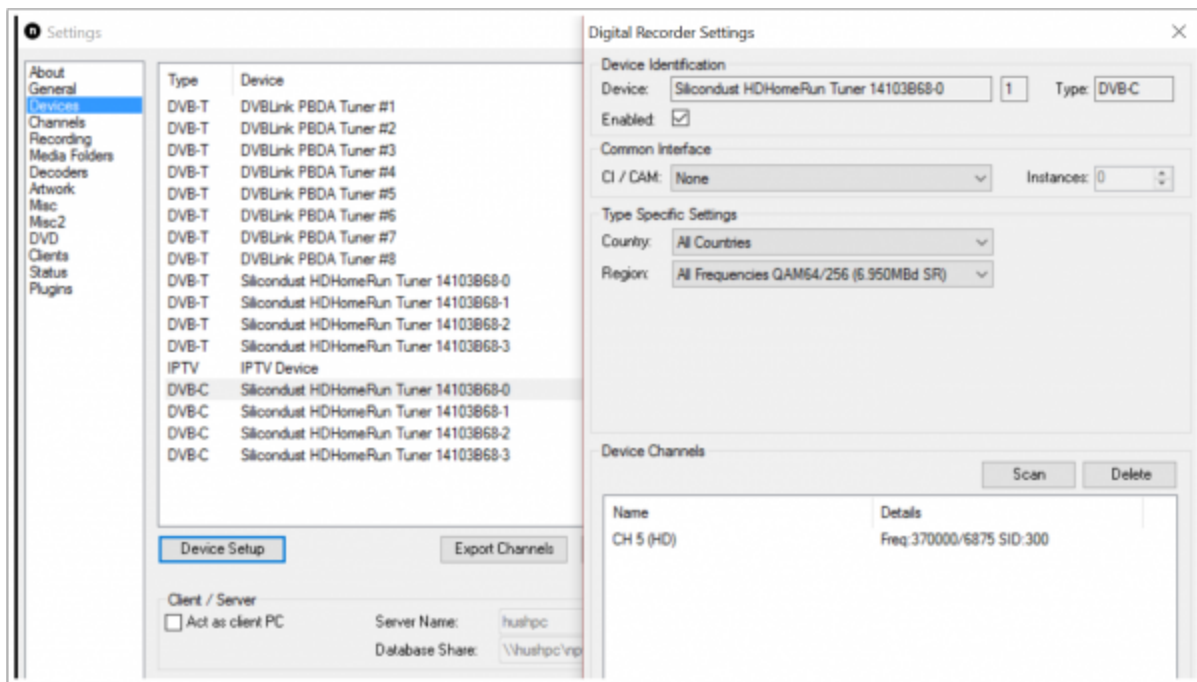
The easiest way to watch live TV with Raspberry Pi is to use it with a HDHomeRun network attached TV tuner.



1. Go to "Settings" > "Add-on browser" > "Install from repository" > "Video add-ons" > "HDHomeRun".
2. Select "Install" and Kodi will download and install this add-on.
3. Now, you can go to "Videos" > "Video Add-ons" > "HDHomeRun Live TV" to watch TV streams.
4. In order to add live TV to the home menu, go to "Settings" > "Interface" > "Configure Skin" > "Customize Home Menu". Scroll down to "Live TV" and "Choose shortcut".
5. Select "Add-on" > "Video Add-on" > "HDHomeRun Live TV". Select OK to save settings.
6. Now, you can launch the Live TV shortcut to watch TV.

# Install PVR back-end

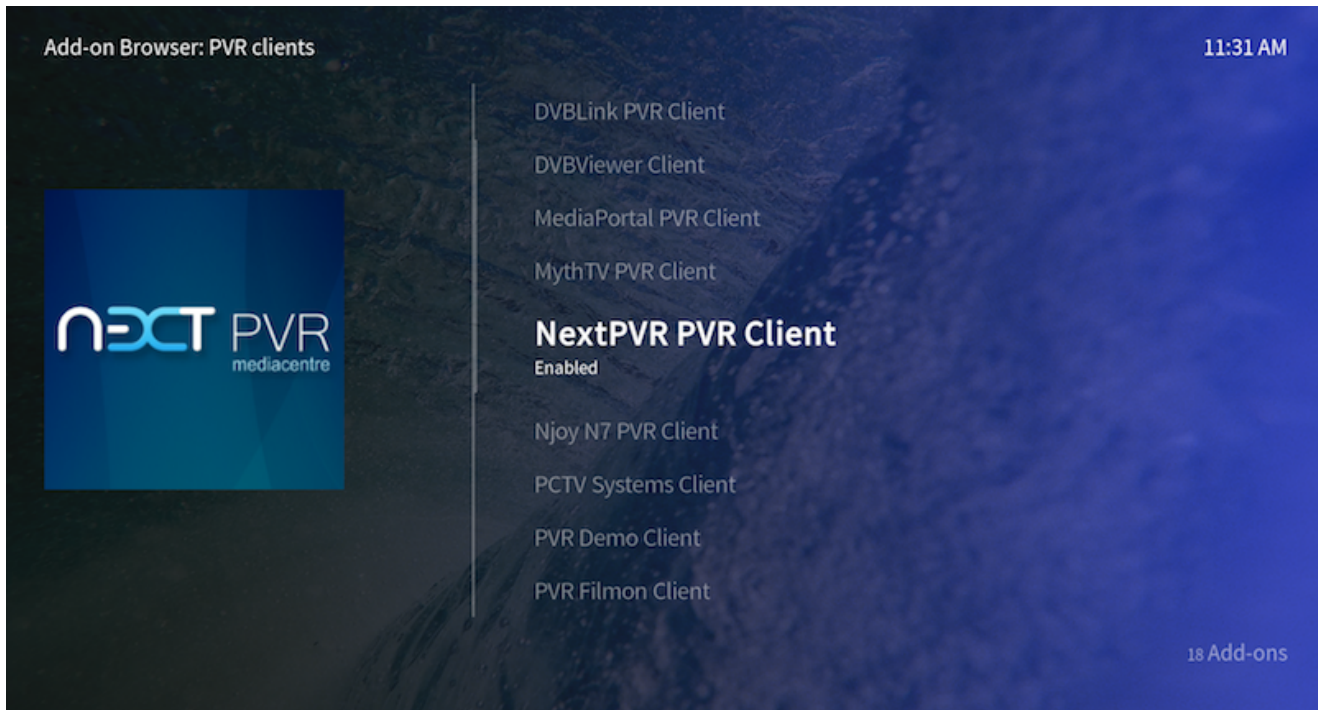
Here are the steps to install NextPVR on Windows-based TV server.



1. Download the **latest NextPVR version** on your Windows-based back-end computer.
2. Launch NPVRSetup\_X\_X\_X.exe and follow the steps in the installation wizard.
3. Open NextPVR application and select Settings by clicking the right hand mouse button.
4. Go to "Devices" tab and select your TV tuner from the list (mine is HDHomeRun DVB-C tuner).
5. Click "Device Setup" select your country and region from the "Type Specific Settings".
6. Click "Scan" to search for the channels.
7. Go to "Channels" tab and select "Update EPG" retrieve the TV Guide (EPG) for all channels and devices.
8. Finally, click "OK" and exit the NextPVR application.

# Enable PVR front-end

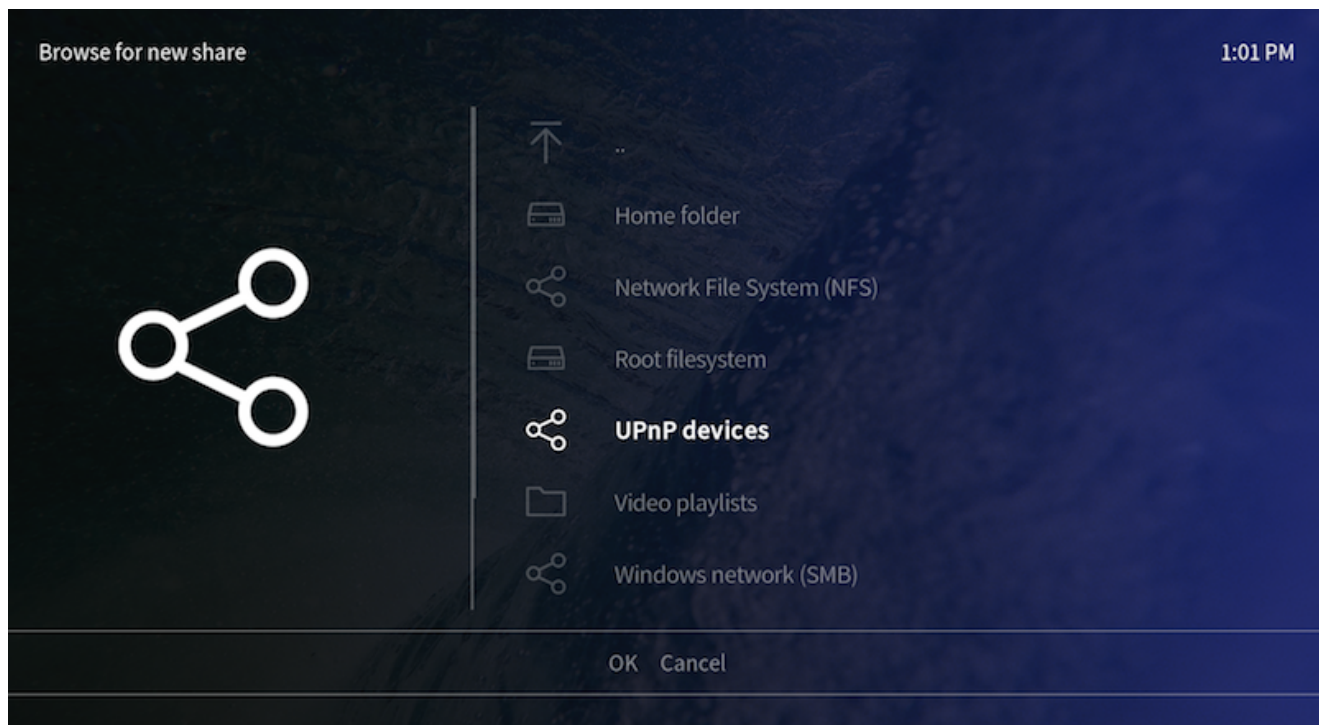
After you have built and configured the back-end server, it is time to configure the front-end server.



1. In Kodi, go to "Settings" > "Add-on browser" tab.
2. Go to "My add-ons" > "PVR clients".
3. Next, select your preferred software from the PVR client list (in my case "NextPVR PVR Client").
4. Click "Enable" start NextPVR client. You can also configure your TV server's IP address if you use a remote computer.
5. Now, Kodi should start importing the EPG from clients. Go back to the main menu and choose "PVR & Live TV" from the main menu to start watching the live TV stream.

# Integrate Netflix, Hulu, and other premium channels

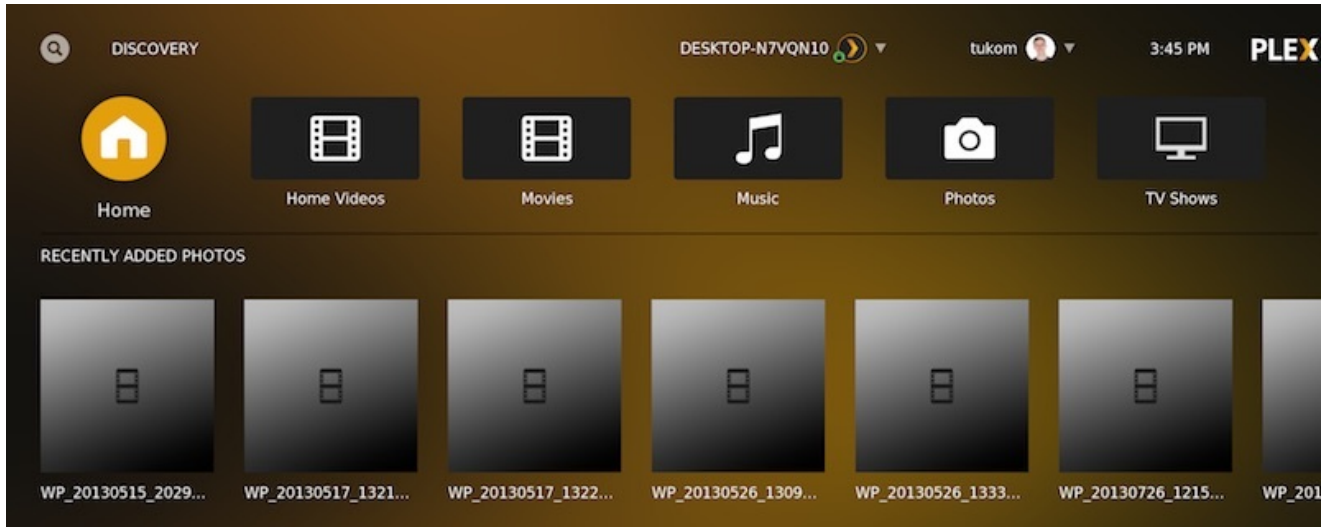
The easiest way to add almost 60 channels of premium content to Kodi on Raspberry Pi is with the PlayOn Media Server for Windows.



1. Go to "Videos" > "Files". Select "Add Videos..." > "Browse" > "UPnP Devices" > "PlayOn (your computer name)".
2. From this list, you can browse the service you want to add as a source (e.g. Netflix).
3. Next, you can rename the name of this media source (e.g. Netflix).
4. In order to add Netflix to the home menu, go to "Settings" > "Interface" > "Configure Skin" > "Customize Home Menu".
5. Select "Add" on any existing shortcut and "Choose shortcut" > "Video Library" > "Sources" > "Netflix". Select OK to save settings.
6. Now, you can start browsing your favorite TV shows and movies via PlayOn Media Server.

# Integrate with Plex

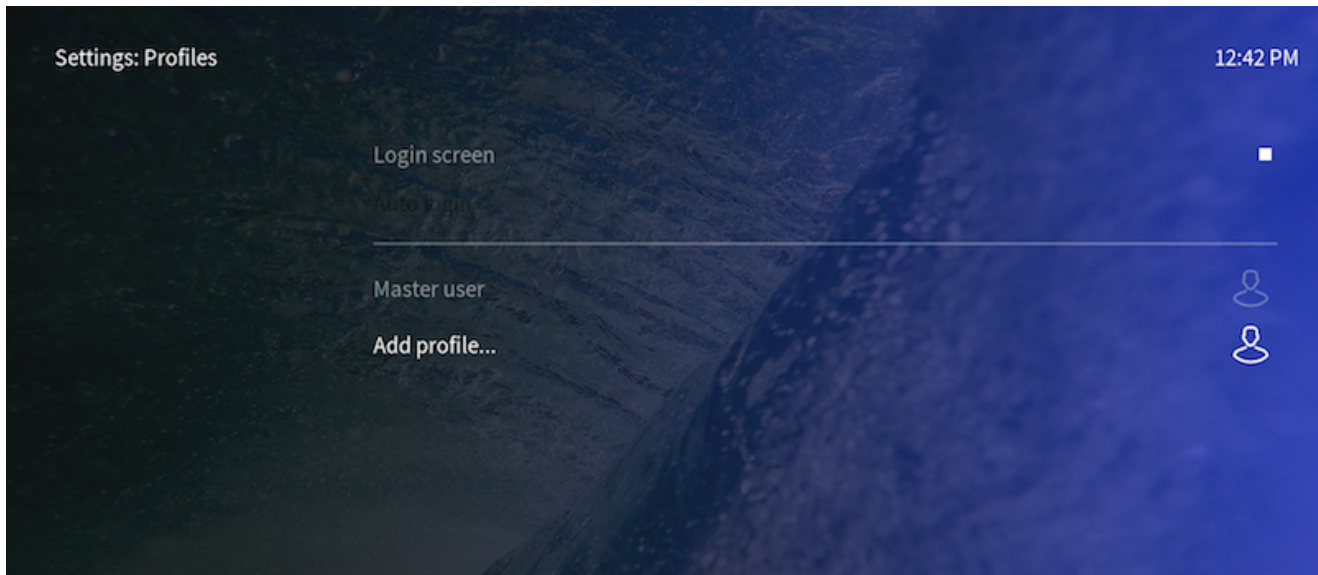
If you want to have an easy way to consume media files around your home, I would recommend using Plex Media Server as a back-end.



1. Go to "Settings" > "Add-on browser" > "Install from repository" > "Video Add-ons" > "Plex".
2. Click on the Plex add-on and select install to download it.
3. You can go back to Videos menu, and you will find the new Plex add-on under the Video Add-ons folder.
4. Launch Plex add-on and select "Sign In". On your web browser (on any device), go to [plex.tv/link](https://plex.tv/link) and enter the code presented on your TV screen.
5. Now, you're all set and you can start discovering your content on Plex.

# Add user profiles

You can easily create new Kodi profiles so that you can tailor settings and user interfaces according to each user's needs.

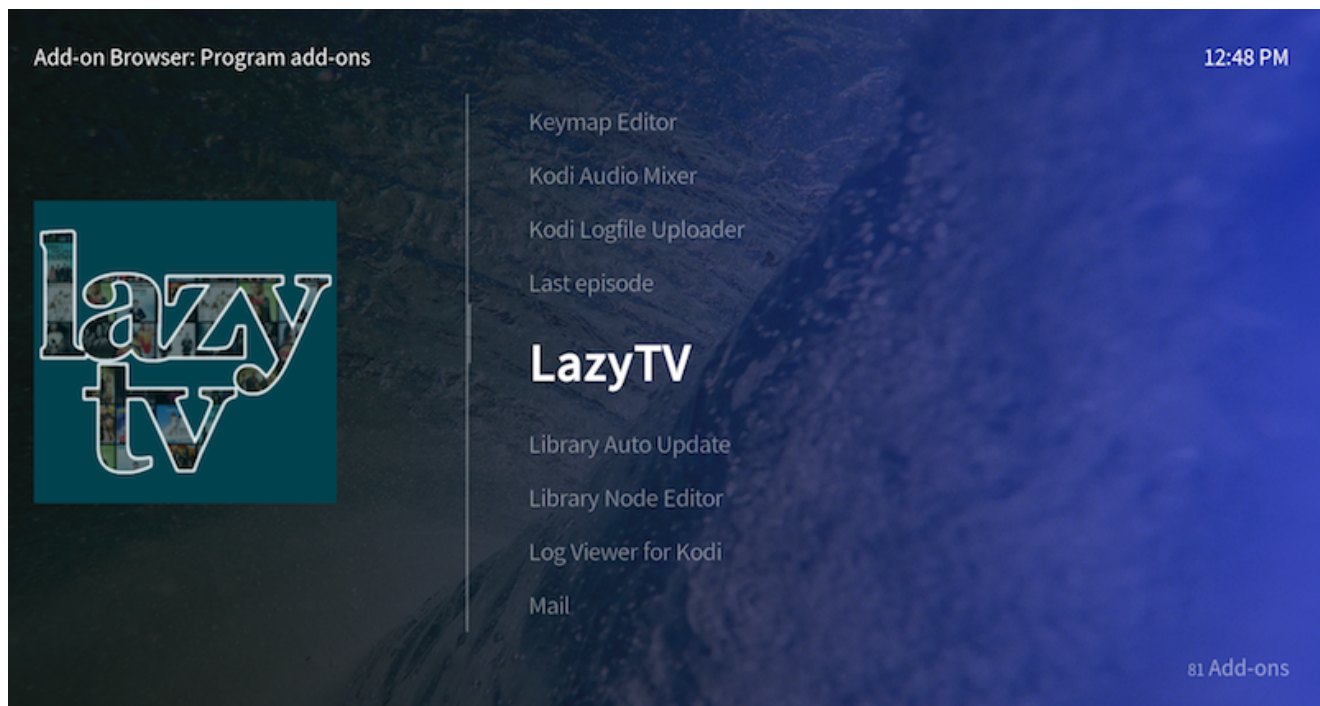


1. Go to "Profiles" sub-menu under the "Settings" home menu.
2. Enable "Login screen".
3. Select "Add profile..". Next, you can type a new profile name.
4. Choose a folder where the profile settings will be stored.
5. Select "Profile picture" and browse for a suitable image.
6. Save profile settings by clicking "OK".
7. Choose either "Copy default" or "Start fresh" depending on whether you want to copy default settings and sources or start fresh.



# Improve your TV viewing experience with LazyTV

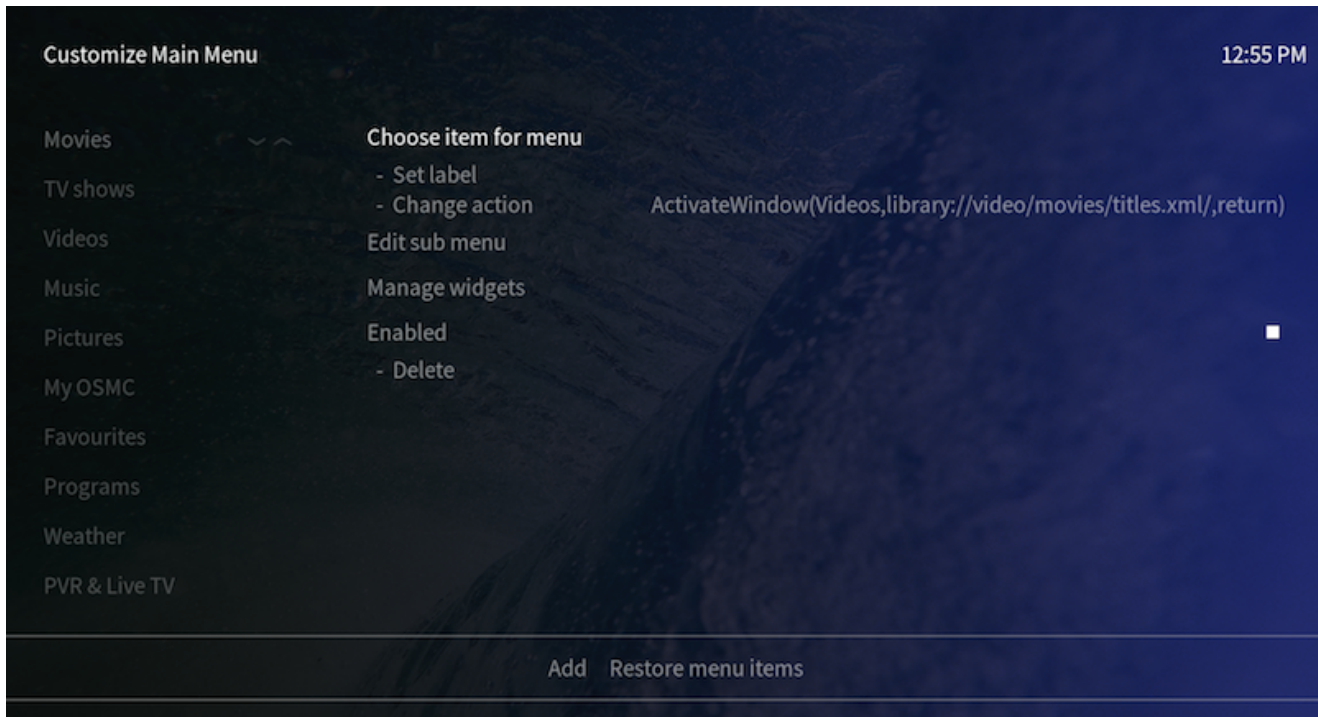
LazyTV is a great way to randomly discover what to watch next after finishing watching an episode of your favorite TV show.



1. Go to "Settings" > "Add-on browser".
2. Go to "Install from repository" > "Program Add-ons" > Select "LazyTV".
3. Select install to download it.
4. Go back to main menu, and go to LazyTV add-on under the Programs Add-ons.
5. Press "C-key" to access the context menu and select "Add-on settings".
6. In the settings screen, you can set, for example, whether LazyTV will automatically produce a list of next episodes for each TV Series, or it will create and launch a randomized playlist.
7. Now, you can launch the LazyTV and start watching proposed TV shows.

# Create main menu items

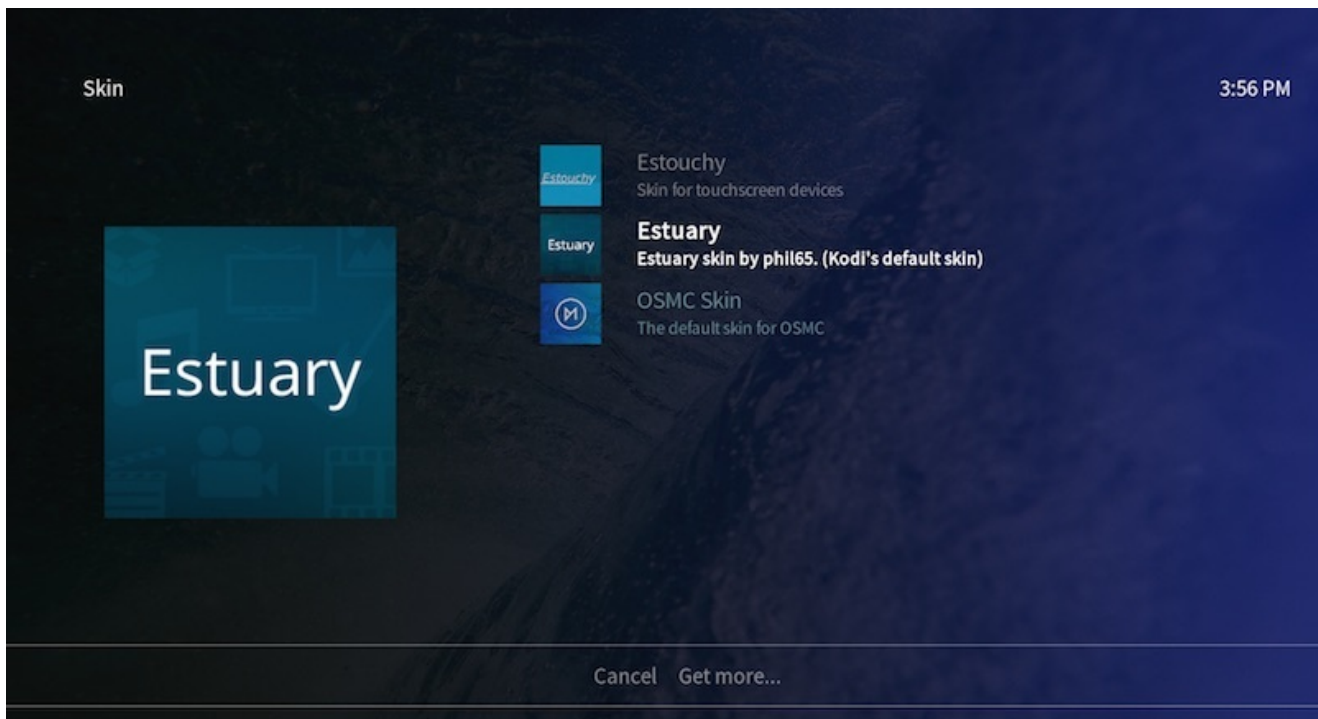
You can create custom main menu items to make home menu more user-friendly.



1. Go to "Settings" > "Interface" > "Configure skin"> and click "Customize Home Menu".
2. Choose item for menu and then browse for suitable action or add-on. Select OK to save settings.
3. You can rename the menu item by selecting "Set label".
4. You can use specific widgets by selecting "Manage widgets".

# Install a new skin (theme)

You can customize your Kodi interface according to your needs.



1. Go to "Settings" > "Inteface settings".
2. In the Skin tab, click "Skin" which shows Estuary.
3. Click "Get More..." to show the list of all available skins.
4. Select your preferred skin from the list.
5. Wait until Kodi finishes downloading and installing the skin.
6. In the Skin tab, click again "Skin" which shows your current skin.
7. Select your new skin from the list.
8. Click "Yes" to change to the new skin once prompted.

# Want to Learn More?

I created Media Experience Blueprint to make sure you never, ever struggle with your media solution again.

It's like having a friendly coach, someone like me, sitting right next to you on your couch, showing you exactly what to do to set up a user-friendly and enjoyable TV and media experience.

[LEARN MORE](#)