



KODIAK®



Generators



Vacuums



Pressure Washers



Water Pumps



Submersible Pumps



Professional tools for professional results.

PRESSURE WASHERS

Electric Models

MODEL COMPARISON CHART

Commercial Series

Model	Voltage	Pressure (PSI)	Flow (GP)
4000R	120	1300	1.85
Formula 100	120	1000	2.1
Turbo 21	120	1000	2.1

1300 psi
1.85 GPM



4000R

- 8 metre (26 ft) wire-braided high pressure hose
- High performance Roto-Clean nozzle
- Convenient soap bottle attachment
- Quick connect garden hose coupling
- 1.5hp Induction motor



1000 psi
2.1 GPM

TURBO21

- 8 metre (26ft) wire-braided high pressure hose
- Variable fan nozzle
- Built-in soap feed system
- Bolt on unloader system
- Long life Interpump with ceramic plungers
- 1.5hp Induction motor

Commercial Series

1000 psi
2.1 GPM



FORMULA 100

- 8 metre (26 ft) wire braided high pressure hose
- Variable fan nozzle
- Built-in soap-feed system
- Long life Interpump with ceramic plungers



KC2100EPC 1.5hp Baldor motor

KC3150EPC 3hp Baldor motor

KC3200EPC 5hp Baldor motor

Motor Speed 3400 rpm

- 7 metre (23ft) electrical cord
- 9 metre (30ft) wire braided high pressure hose
- 91 cm (36") lance with four quick connect nozzles (0°, 15°, 25° and soap)
- Integrated soap feed system and adjustable unloader
- Industrial Interpump with ceramic plungers and thermal protection

REVERSIBLE HANDLE



"Reversible Handle" allows the user the option of high cart or low cart configuration by simply switching the handles from one side to the other.

Professional Series

MODEL COMPARISON CHART

Professional Series 3400 rpm

Model	Voltage	Pressure (PSI)	Flow (GP)
KC2100EPH	120	1000	2.1
KC2100EPC	120	1000	2.1
KC3150EPC	240	1500	3.0
KC3200EPC	240	2000	3.0

1000 psi
2.1 GPM



KC2100EPH

- 1.5hp Baldor motor
- 7 metre (23ft) electrical cord
- 9 metre (30ft) wire-braided high pressure hose
- 91 cm (36") lance with four quick connect nozzles (0°, 15°, 25° and soap)
- Integrated soap feed system and adjustable unloader
- Industrial Interpump with ceramic plungers and thermal protection

1000 PSI – 2000 PSI
2.1 GPM – 3.0 GPM



PRESSURE WASHERS

Gasoline Models

Heavy Duty Consumer



2000 psi
2.0 GPM



2800 psi
2.3 GPM



2600 psi
2.0 GPM



4000 psi
4.0 GPM

CG2350T

- Briggs & Stratton engine
- 9 metre (30ft) high pressure hose
- 91 cm (36") Lance / gun assembly with adjustable spray nozzle
- Built-in soap injection system
- Thermal protected pump

CG2800R

- 6.0hp Honda GC engine
- 9 metre (30ft) wire braided high pressure hose
- 91 cm (36") lance with four quick connect nozzles (0°, 15°, 25° and soap)
- Built-in soap injection system
- Thermal protected pump

CG2600T

- 5.5hp Honda GCV engine
- 9 metre (30ft) high pressure hose with hose reel
- 91 cm (36") Lance / gun assembly with adjustable spray nozzle
- Built-in soap injection system
- Thermal protected pump

RT4000

- 15hp Kodiak OHV with oil alert
- 15 metre (50ft) wire braided high pressure hose
- 91 cm (36") lance with four quick connect nozzles (0°, 15°, 25° and soap)
- Built-in soap injection system
- Thermal protected pump
- Industrial Interpump with ceramic plungers and thermal protection



HONDA
ENGINES

RT2800

- 7.0 hp Kodiak OHV engine
- 9 metre (30ft) high pressure hose
- 91 cm (36") Lance / gun assembly with adjustable spray nozzle
- Built-in soap injection system
- Thermal protected pump

2800 psi
2.3 GPM



RT2800P

- 7.0 hp Kodiak OHV engine
- 9 metre (30ft) wire braided high pressure hose
- 91 cm (36") lance with four quick connect nozzles (0°, 15°, 25° and soap)
- Built-in soap injection system
- Thermal protected pump

MODEL COMPARISON CHART

Model	Peak Pressure (PSI)	Flow (GP)	Engine
CG2350T	2000	2.0	Briggs & Stratton
CG2600T	2600	2.0	5.5 hp Honda (GCV)
CG2800R	2800	2.3	6.0 hp Honda (GC)
RT2800	2800	2.3	7.0 hp Kodiak OHV
RT2800P	2800	2.3	7.0 hp Kodiak OHV
RT4000	4000	4.0	15HP KODIAK OHV

PRESSURE WASHERS

Gasoline Models

Professional Series

2000 psi - 2500 psi
3.0 GPM



CKC3200GPC
KC3250GPC

- 5.5hp (CKC3200GPC) / 6.5hp (KC3250GPC) Honda GX engine with oil Alert
- 9 metre (30ft) wire braided high pressure hose
- 91 cm (36") lance with four quick connect nozzles (0°, 15°, 25° and soap)
- Integrated soap feed system and adjustable unloader
- Industrial Interpump with ceramic plungers and thermal protection

2500 psi
3.0 GPM



KC3250SUB

- 7.0hp Subaru EX engine with oil Alert
- 9 metre (30ft) wire braided high pressure hose
- 91 cm (36") lance with four quick connect nozzles (0°, 15°, 25° and soap)
- Integrated soap feed system and adjustable unloader
- Industrial Interpump with ceramic plungers and thermal protection



REVERSIBLE HANDLE

Reversible Handle™ allows the user the option of high cart or low cart configuration by simply switching the handles from one side to the other.



3500 psi
3.8 GPM

KC4350GPC

- 13hp Honda GX engine with oil Alert
- 15 metre (50ft) wire braided high pressure hose
- 91 cm (36") lance with four quick connect nozzles (0°, 15°, 25° and soap)
- Integrated soap feed system and adjustable unloader
- Industrial Interpump with ceramic plungers and thermal protection



PRESSURE WASHERS

Gasoline Models

Heavy-Duty Professional Series



3500 psi
3.8 GPM

KC4350GHD

- 13hp Honda GX engine with oil Alert
- 15 metre (50ft) wire braided high pressure hose
- 91 cm (36") lance with four quick connect nozzles (0°, 15°, 25° and soap)
- Seperate soap feed system and adjustable unloader
- Industrial Interpump with ceramic plungers and thermal protection

KC4040GHD

- 14hp Subaru EX engine with oil Alert
- 15 metre (50ft) wire braided high pressure hose
- 91 cm (36") lance with four quick connect nozzles (0°, 15°, 25° and soap)
- Seperate soap feed system and adjustable unloader
- Industrial Interpump with ceramic plungers and thermal protection



4000 psi
4.0 GPM

MODEL COMPARISON CHART

Model	Pressure (PSI)	Flow (GP)	Engine
CKC3200GPC	2000	3.0	5.5 hp Honda (GX)
KC3250GPC	2500	3.0	6.5 hp Honda (GX)
KC3250SUB	2500	3.0	7.0 hp Subaru (EX)
KC4350GPC	3500	3.8	13.0 hp Honda (GX)
KC4350GHD	3500	3.8	13.0 hp Honda (GX)
KC4040GHD	4000	4.0	14.0 hp Subaru (EX)



WATER PUMPS

General Purpose

PWP1H
PWP2HX
PWP3HX
PWP4HX

- Powered by Honda GX engines with oil alert (excluding PWP1H)
- Cast aluminum pump housing
- Cast iron impeller and volute
- Carbon ceramic mechanical seal

Standard accessories: 1 strainer, 2 hose couplings, 2 hose barbs, 2 seals



PWP1H



PWP2HX



PWP3HX



PWP4HX

HONDA
ENGINES

MODEL COMPARISON CHART

Model	Engine	Port Size	Max Capacity	Suction Lift	Max Head	Handles Solids	Weight
PWP1H	1 hp Honda (GX25)	1" x 1"	31 gpm	26 ft	114 ft	1/4"	10 lbs
PWP2HX	4 hp Honda (GX120)	2" x 2"	137 gpm	26 ft	106 ft	1/4"	52 lbs
PWP3HX	5.5 hp Honda (GX160)	3" x 3"	264 gpm	26 ft	137 ft	1/4"	66 lbs
PWP4HX	8 hp Honda (GX240)	4" x 4"	476 gpm	26 ft	93 ft	1/4"	110 lbs

WATER PUMPS

Trash Pumps

PWP2SWT
PWP3SWT
PWP4SWT

- Powered by Honda GX engines with oil alert
- Cast aluminum pump housing
- Cast iron impeller and volute
- Silicon carbide mechanical seal

Standard accessories: 1 strainer, 2 hose couplings, 2 hose barbs, 2 seals



PWP2SWT



PWP3SWT



PWP4SWT

HONDA
ENGINES

MODEL COMPARISON CHART

Model	Engine	Port Size	Max Capacity	Suction Lift	Max Head	Handles Solids	Weight
PWP2SWT	5.5 hp Honda (GX160)	2" x 2"	158 gpm	26 ft	85 ft	1"	74 lbs
PWP3SWT	8 hp Honda (GX240)	3" x 3"	343 gpm	26 ft	92 ft	1"	132 lbs
PWP4SWT	11 hp Honda (GX340)	4" x 4"	530 gpm	26 ft	79 ft	1"	147 lbs

WATER PUMPS

Specialty Purpose

Semi-Trash Pumps

PWP2SSST

PWP3SSST

- Powered by Honda GX engines with oil Alert
- Cast aluminum pump housing
- Cast iron impeller and volute
- Silicon carbide mechanical seal

Standard accessories: 1 strainer, 2 hose couplings, 2 hose barbs, 2 seals

HONDA
ENGINES



PWP3SSST

MODEL COMPARISON CHART

Model	Engine	Port Size	Max Capacity	Suction Lift	Max Head	Handles Solids	Weight
PWP2SSST	4.0 hp Honda (GX120)	2" x 2"	185 gpm	26 ft	76 ft	3/4"	46 lbs
PWP3SSST	5.5 hp Honda (GX160)	3" x 3"	264 gpm	26 ft	76 ft	3/4"	57 lbs

Submersible Pumps

PSP125SSU

1.25" Electric Submersible Pump

- 1/3 hp
- 304 Stainless Steel casing
- Motor with thermal overload protection
- Built in auto thermal overload reset
- Top discharge with garden hose connection
- Bottom suction (down to 1/8")
- 33 ft power cable
- CSA certified product



PSP125SSU

PSP200SSD

2" Electric Submersible Pump

- 1/2 hp, 115v
- 304 Stainless Steel casing
- Rubber base / side suction
- Double mechanical seals
- Motor with thermal overload protection
- Built in auto thermal overload reset
- Top discharge
- 33 ft power cable
- CSA certified product



PSP200SSD

MODEL COMPARISON CHART

Model	Discharge Size	Motor/Volt/RPM	Rated Amps	Max Head	Max Capacity	Dimensions	Weight
PSP125SSU	1 1/4"	1/3 hp / 115v / 3450 rpm	3 amp	27 ft	36 gpm	10" h x 6" w	9 lbs
PSP200SSD	2"	1/2 hp / 115v / 3450 rpm	6 amp	37.39 ft	67 gpm	15" h x 6.75 w	29 lbs

WATER PUMPS

Specialty Purpose

Specialty purpose pumps for liquid chemical transfer applications.

PWP2P5GC
PWP2CH5GX
PWP2P7RT
PWP3P13GX
PWP3P15RT

No accessories.



PWP2P5GC



PWP3P15RT

Specialty purpose pumps for high pressure applications (back up fire fighting, transferring to an elevated location)

PWP15SCH4070
PWP2SCH5050

Standard accessories: 1 strainer, 2 hose couplings, 2 hose barbs, 2 seals



PWP2SCH5050



PWP15SCH4070

Specialty purpose pumps for sand, mud and sludge removal

PWP3SMD

Standard accessories: 1 strainer, 2 hose couplings, 2 hose barbs, 2 seals



PWP3SMD

HONDA
ENGINES

MODEL COMPARISON CHART

Model	Engine	Port Size	Max Capacity	Suction Lift	Max Head	Pump Material	Weight
PWP2P5GC	5 hp Honda (GC160)	2" x 2"	150 gpm	25 ft	134 ft	Poly	46 lbs
PWP2CH5GX	5.5 hp Honda (GX160)	2" x 2"	150 gpm	25 ft	134 ft	Poly	49 lbs
PWP2P7RT	7 hp Kodiak	2" x 2"	150 gpm	25 ft	134 ft	Poly	48 lbs
PWP3P13GX	13 hp Honda (GX390)	3" x 3"	440 gpm	25 ft	125 ft	Poly	110 lbs
PWP3P15RT	15 hp Honda OHV	3" x 3"	440 gpm	25 ft	125 ft	Poly	115 lbs
PWP15SCH4070	5.5 hp Honda (GX160)	1.5" x 1.5"	103 gpm	26 ft	233 ft	Aluminum	59 lbs
PWP2SCH5050	5.5 hp Honda (GX160)	2" x 2"	106 gpm	26 ft	167 ft	Aluminum	59 lbs
PWP3SMD	5.5 hp Honda (GX160)	3" x 3"	65 gpm	26 ft	50 ft	Aluminum	99 lbs

WATER PUMPS

High Flow Trash

TWP6HT-WP - Wet Prime

TWP6JS-DP - Dry Prime

- Cast iron casing and brackets for durability
- Semi-Open ductile cast iron impeller for large diameter solids
- Tungsten Carbide mechanical seal with Viton elastomers can run dry on high vacuum
- Large prime chamber for easier priming
- Oil resistant Nitrile rubber priming valve for longer wear
- Easily removable inspection & drain cover without tools
- Exclusive Enviroprime System - Evacuating the air from the suction line for easier dry prime start-up (TWP6JS-DP)
- Easily replaceable ductile iron wear ring (TWP6JS-DP)
- Easily replaceable wear plates with oil abrasion resistant rubber facing (TWP6HT-WP)
- Made in the USA

TWP6HT-WP



TWP6JS-DP

ENVIROPRIME
system



JOHN DEERE



MODEL COMPARISON CHART

Model	Prime Type	Diesel Engine	Fuel Capacity	Port Size	Max Capacity	Suction Lift	Max Head	Handles Solids	Weight
TWP6HT-WP	WET	Deutz A/C - 46hp	45 Gal	6" x 6"	1500 gpm	28 ft	102 ft	3"	2160 lbs
TWP6JS-DP	DRY	John Deere 4024T L/C - 49hp	50 Gal	6" x 6"	2300 gpm	28 ft	110 ft	3"	3480 lbs

INDUSTRIAL VACUUMS



SV515

- 10 gallon, steel tank



SV315PI

- 11 gallon, polypropylene tank



SV315

- 11 gallon, polyethylene tank



SV415M

- 24 gallon, polyethylene tank
- Convenient handle, large wheels and built in tank drain



SV800

- 21 gallon, stainless steel tank
- Upper canister with cyclone system to filter dust and fine particles



SV420T

- 30 gallon, polyethylene tank
- Hinged cart design allows for easy tipping of tank contents

Included with Models SV315PI, SV315, SV420T, SV515, SV415M, SV800

- 3m (10ft) flexible hose
- 8.5m (28ft) long power cord
- Swivel casters for easy mobility
- Standard accessories Package 2

"Standard Accessories Package 2"



MODEL COMPARISON CHART

Model	Motor	Watts	Air Flow	Water Lift
SV315PI	1.5 hp	1080W	100CFM	90°
SV315	1.5 hp	1080W	100CFM	90°
SV515	1.5 hp	1080W	100CFM	90°
SV415M	1.5 hp	1080W	100CFM	90°
SV420T	2 x 1 hp	2 x 750W	165CFM	70°
SV700	1.5 hp	1080W	100CFM	90°
SV800	2 x 1 hp	2 x 750W	165CFM	-

SV700

- 9 gallon, polyethylene tank
- 3 gallon, detergent tank
- 4.5m (15ft) flexible hose with detergent applicator and upholstery tool
- Swivel casters for easy mobility



GENERATORS



SGA2300GC

- 5hp Honda GC engine
- Voltage regulator
- Non fuse breakers
- 1.7 L tank capacity
- Run time (half load) 2.3 hours



SXB2800HX

- 5.5hp Honda GX engine with oil Alert
- Voltage regulator
- Non fuse breakers
- 11 L tank capacity
- Run time (half load) 8.3 hours



HONDA
ENGINES



SXB4000HX

- 8 hp Honda GX engine with oil Alert
- Automatic idle control
- Volt meter and voltage regulator
- Non fuse breakers
- DC output capacity
- 17 L tank capacity
- Run time (half load) 8.5 hours
- SXBWHEELKIT INCLUDED



SXD5000HX

- 7.1hp IB30 Hatz diesel engine (electric start)
- Voltage regulator
- Non fuse breakers
- 20 L tank capacity
- Run time (half load) 22 hours



SXD7300HX

- 10hp IB40 Hatz diesel engine (electric start)
- Voltage regulator
- Non fuse breakers
- 20 L tank capacity
- Run time (half load) 16 hours

GENERATORS



SXB5500HX (S)

- 11hp Honda GX engine with oil Alert
- Automatic idle control
- Volt meter and voltage regulator
- Non fuse breakers
- DC output capability
- 17 L tank capacity
- Run time (half load) 5.8 hours
- SXBWHEELKIT INCLUDED

Add (S) for electric start



SXB12000HXV

- GX630 Honda GX engine with oil Alert
- Automatic idle control
- Volt meter and voltage regulator
- Non fuse breakers
- 44 L tank capacity
- Run time (half load) 12 hours
- GWK-2 OPTIONAL



SXB7000HX (S)

- 13hp Honda GX engine with oil Alert
- Automatic idle control
- Volt meter and voltage regulator
- Non fuse breakers
- DC output capability
- 17 L tank capacity
- Run time (half load) 5.2 hours
- SXBWHEELKIT INCLUDED

Add (S) for electric start



HONDA
ENGINES

MODEL COMPARISON CHART

Model	AC Output	Maximum Output	Max Amps	Rated Output	Rated Amps	DC Output
SGA2300GC	120V	2300W	20A	2000W	17A	-
SXB2800HX	120V	2800W	23.3A	2400W	20A	12V
SXB4000HX	120V/ 240V	4000W	37.5A/8.75A	3600W	30A/15A	12V
SXB5500HX (S)	120V / 240V	5500W	45.8A / 22.9A	4500W	37/5A / 18.75A	12V
SXB7000HX (S)	120V / 540V	6800W	56.7A / 28.3A	5700W	50A / 25A	12V
SXB12000HXV	120V/ 240V	12000W	92A / 42A	10000W	100A / 50A	-



SXB7000HX
Shown with
Wheelkit

ACCESSORIES

Pressure Wash



Soap Shooter

- 5000 psi max
- Adjustable
- Chemical does not go through the pump
- Attaches to the QC on lance or extension wand
- Stainless Steel Includes 30 ft hose, filter, nozzle

SPS100145 - 4.0 Nozzle

SPS100146 - 4.5 Nozzle

SPS100147 - 5.0 Nozzle



SBK5500 Sandblasting Kit

- 8.0 Max gpm
- Tungsten Carbide Nozzle
- 5500 psi
- 1/4" BSP-F Inlet
- Includes 12" steel probe & 25 ft suction hose with 1/4" QC



Telescopic Wand

- 3500 psi max
- 10.5 gpm
- 195° F max. Temp
- 1/4" QC Outlet



Hose Reel

- 3000 psi max
- Steel Construction

HR50 - Hose ID 3/8
- Hose Cap. 50 ft

HR100 - Hose ID 3/8
- Hose Cap. 100 ft

HR150 - Hose ID 3/8
- Hose Cap. 150 ft

HR200 - Hose ID 3/8
- Hose Cap. 200 ft



Pressure Wash Chemicals

KODIAKDEG4 4 Litre Bottle Heavy-Duty Degreaser - (4 bottles/case)

KODIAKDFC4 4 Litre Bottle Deck & Fence Cleaner - (4 bottles/case)

KODIAKAPC4 4 Litre Bottle All-Purpose Cleaner - (4 bottles/case)

KODIAKHHW4 4 Litre Bottle House & Window Cleaner - (4 bottles/case)

KODIAKCBW4 4 Litre Bottle Car & Boat Wash 'n' Wax - (4 bottles/case)

ACCESSORIES

Water Pump / Vacuum

Water Pump Accessories



Bottom Hole Strainers
PWP-BS200 - 2" (50 mm)
PWP-BS300 - 3" (80 mm)



Standard Round Hole Strainers
PWP-RS150 - 1½" (40mm)
PWP-RS200 - 2" (50 mm)
PWP-RS300 - 3" (80 mm)
PWP-RS400 - 4" (100 mm)



FNWP - Fog Nozzle
 1.5" NPSM Polycarbonate
 Fog Nozzle. ULC listed.



Long Thin Hole Strainers
PWP-LS200 - 2" (50 mm)
PWP-LS300 - 3" (80 mm)
PWP-LS400 - 4" (100 mm)



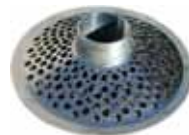
Standard Square Hole Strainers
PWP-SS200 - 2" (50 mm)
PWP-SS300 - 3" (80 mm)
PWP-SS400 - 4" (100 mm)



**Discharge Hose with Aluminum
 Female Coupler and Male Adapter.**
DH15ALUM - 1½" x 50 ft
DH2ALUM - 2" x 50 ft
DH3ALUM - 3" x 50 ft
DH4ALUM - 4" x 50 ft



Polyethylene Suction Hose Strainers
PWP-PS200 - 2" (50 mm)
PWP-PS300 - 3" (80 mm)



Top Hole Strainers
PWP-TS200 - 2" (50 mm)
PWP-TS300 - 3" (80 mm)
PWP-TS400 - 4" (100 mm)



**Poly Suction Hose with Aluminum
 Female Coupler and Male Adapter.**
SH15ALUM - 1½" x 50 ft
SH2ALUM - 2" x 50 ft
SH3ALUM - 3" x 50 ft
SH4ALUM - 4" x 50 ft

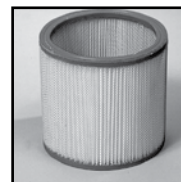
Vacuum Accessories



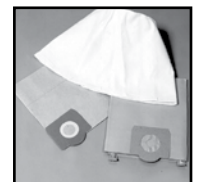
Frontal Tools
 SV00041



Dry Vacuum Kit
 (SV700) SV02772

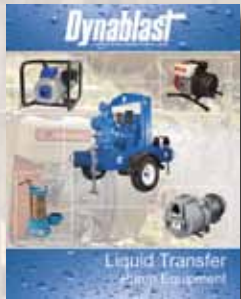


Hepa Filter
 SV02995



Filters

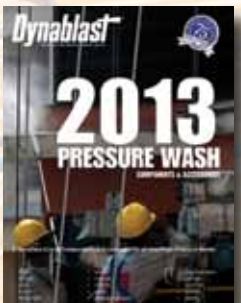
ADDITIONAL PRODUCT BROCHURES FROM DYNABLAST CALL FOR YOUR FREE COPY TODAY.



LIQUID TRANSFER PUMP EQUIPMENT Various Brands of liquid transfer pumps

- AMT
- Gorman-Rupp
- IPT
- Tuthill
- Price
- Graco
- Kodiak

Available in French and English



2012 DYNABLAST PRESSURE WASH COMPONENTS & ACCESSORIES CATALOGUE

A comprehensive catalogue featuring key pressure wash components and accessories including:

- Interpump; Pratissoli Pumps
- A variety of guns, lances, hoses, and nozzles



DYNABLAST EQUIPMENT BROCHURE

Industrial Grade

- Cold Water Electric Pressure Washers
- Cold Water Gas Pressure Washers
- Hot Water Electric Pressure Washers
- Hot Water Gas Pressure Washers

Available in French and English



DISTRIBUTED BY:

www.kodiakpower.ca
www.pressurewashcomponents.ca
www.dynablast.ca



EAST - 1.888.881.6667
WEST - 1.800.527.8592