

KS2 SATS 2020

KS2 SATS Information for Parents

February 2020



KS2 Assessment – A Summary

- At the end of Key Stage 2 there will be an 'expected standard' set **A child must meet all the criteria consistently to get the 'expected standard' judgement.**

KS2 'Assessment' in 2020

Statutory assessment

- KS2 **national curriculum tests** with outcomes in the form of **scaled scores**.
- Teacher assessment at KS2 for writing, using the **frameworks** for teacher assessment.

Formative classroom assessment

- Determined by schools in line with their curriculum.

SATS 2020

Schools have good understanding of the SATS tests for KS2. There are sample tests and frameworks available for schools to use for the tests in.

Key stage 2

English reading

English grammar, punctuation and spelling

Mathematics

The DfE provides some description of pupil performance at the 'national standard' and test results and exemplification materials will be used to set the raw scores that link to a KS2 child's scaled score.

Each pupil registered for the tests will receive:

- a raw score (number of raw marks awarded)
- a scaled score
- confirmation of whether or not they attained the national standard

KEY POINTS

The National Curriculum 2014 is challenging and has a focus on developing children's subject knowledge and skills.

The National Curriculum 2014 has 'expectations' children are required to meet at each banding (**AGE RELATED**, OR **EXPECTED STANDARD**).



**Scaled
Scores**

The KS2 2020 tests will include reading, grammar, punctuation and spelling, arithmetic and reasoning.

WHAT WILL BE ASSESSED?

ASSESSED BY TESTS *(marked externally)*

READING

ONE PAPER

Reading booklet
and associated
answer booklet.

SPaG

Paper 1, short
answer questions.

Paper 2, spelling.

MATHS

Paper 1, arithmetic

Paper 2, reasoning

Paper 3, reasoning

CONTINUOUS TEACHER
ASSESSMENT

WRITING

CONTINUOUS TEACHER ASSESSMENT

SCIENCE

READING 2020

ASSESSED BY TEST *(marked externally)*

PAPER 1

60 minutes

- This test consists of a reading answer booklet and a separate reading booklet.
- Pupils will have a total of 1 hour to read the 3 texts in the reading booklet and complete the questions at their own pace. They can approach the test as they choose: e.g. working through one text and answering the questions before moving on to the next.
- The least-demanding text will come first with the following texts increasing in level of difficulty.

READING SKILLS ASSESSED

The most crucial aspects of reading at the end of Key Stage 2 are:-

- Accuracy (decoding familiar and unfamiliar words correctly)
- Fluency (speed and confidence)
- Comprehension (drawing meaning from text)

- Understanding, describing, selecting or retrieving information, events or ideas from texts and using quotation and reference to text.
- Deducing, inferring or interpreting information, events or ideas from texts.
- Identifying and commenting on the structure and organization of texts, including grammatical and presentational features at text level.
- Explaining and commenting on the writers' use of language, including grammatical and literary features at word and sentence level.
- Identifying and commenting on writers' purposes and viewpoints, and the overall effect of the text on the reader.

9

... cutting off a **vital** food supply.

What does the word *vital* mean in this sentence?

Tick one.

essential

available

useful

healthy

7

Look at the section headed: **Other interesting facts.**

Complete the sentence below.

Recent studies show that...

giant pandas always spend most of their lives alone.

most giant pandas live in captivity.

giant pandas only live in the wild in China.

some giant pandas live in the same area.

Tick one.

1 mark

10

According to the text, why are giant pandas under threat of extinction?

Give **two** reasons.

1. _____

2. _____

2 marks

8

Look at the section headed: **Why are people concerned about giant panda?**

Find and copy one word which shows that there are lots of things we do not yet know about giant pandas.

1 mark

SPaG 2020

English - Spelling, Punctuation and Grammar

ASSESSED BY TEST *(marked externally)*

PAPER 1

45 minutes to complete the test, answering the questions in the test paper.

PAPER 2

This component consists of an answer booklet for pupils to complete and a test transcript to be read by the test administrator.

Pupils will have approximately 15 minutes to complete the test (not strictly timed), by writing the 20 missing words in the answer booklet.

English Grammar, Punctuation and Spelling

Sample questions

2

Which pair of verbs correctly completes the sentence below?

Pluto _____ now called a dwarf planet, but once it _____ classified as a planet.

Tick one.

- | | | |
|-----|-----|--------------------------|
| was | is | <input type="checkbox"/> |
| was | was | <input type="checkbox"/> |
| is | is | <input type="checkbox"/> |
| is | was | <input type="checkbox"/> |

14

Tick the option that shows how the underlined words are used in the sentence.

My baby brother was born in the hospital where my father works.

Tick one.

- | | |
|-------------------------|--------------------------|
| as a preposition phrase | <input type="checkbox"/> |
| as a relative clause | <input type="checkbox"/> |
| as a main clause | <input type="checkbox"/> |
| as a noun phrase | <input type="checkbox"/> |

1 mark

13

Tick one box to show which part of the sentence is a **relative clause**.

The table which is made of oak is now black with age.



1 mark

MATHS 2020

MATHS (*marked externally*)

PAPER 1

Arithmetic - lasts for 30 minutes.

PAPER 2

Reasoning - lasts for 40 minutes.

PAPER 3

Reasoning - lasts for 40 minutes.

The tests have questions of 1 and 2 marks and children are given marks for working out if they finish the task, but get the answer incorrect.

NO CALCULATORS are allowed.

Sample arithmetic questions

5 $1,034 + 586 =$

1 mark

23

$$\begin{array}{r} 54 \\ \times 23 \\ \hline \end{array}$$

Show your method

2 marks

13 $4^2 =$

1 mark

22 $12 - 6.01 =$

1 mark

16 $1,440 \div 12 =$

1 mark

25

$$133016$$

Show your method

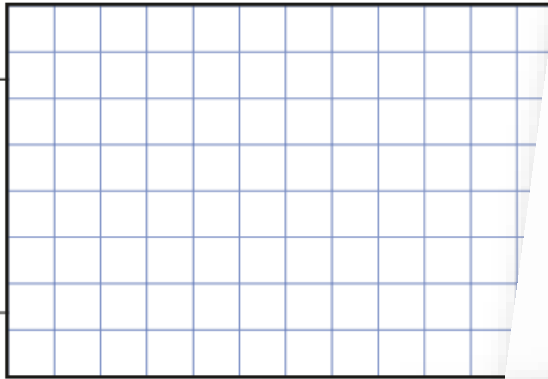
2 marks

Sample reasoning questions

- 2 A pack of paper has 150 sheets.
4 children each take 7 sheets.

How many sheets of paper are left in the packet?

Show your method



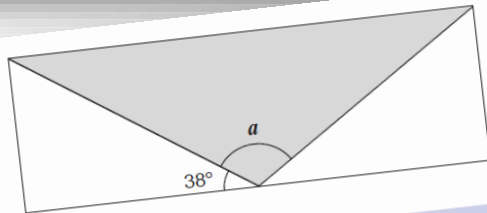
11

Here is a number written in Roman numerals.

CXV

Write the number in figures.

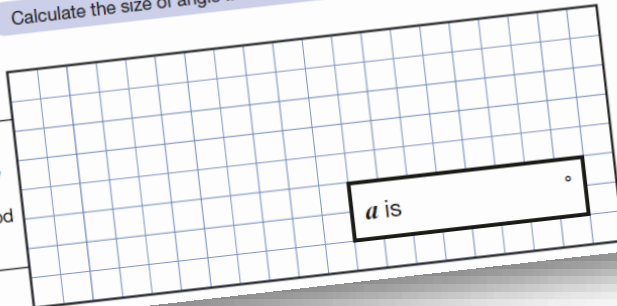
1 mark



Not to scale

Calculate the size of angle a .

Show your method



2 marks

5

What is 444 minutes in hours and minutes?

hours

minutes

1 mark

PREPARING CHILDREN FOR ON-SCREEN MARKING

All key stage 2 tests will be marked on screen.

To help ensure that pupils' test scripts can be scanned and their answers read and marked on screen, children must follow the advice given to them by their teachers about where to mark put their answers and where they can write on their papers.

The diagram illustrates a two-page mathematics paper with the following components and instructions:

- Page 24:** Contains the question number '24' and the problem '15.4 - 8'. A pink box points to the top margin with the text: 'Key stage 2 mathematics paper'. A grey margin on the right contains a box for '1 mark'.
- Page 25:** Contains the question number '25' and the problem '1 3 | 3 0 | 1 6'. A pink box points to the top margin with the text: 'Pupils must not write in the grey margin area - this area is trimmed during preparation for marking and pupils' answers written here will be lost.' A pink box points to the bottom margin with the text: 'Pupils must not write on or around the lines at the top and bottom of a page.' A grey margin on the right contains a box for '2 marks'. A label 'Show your method' is positioned on the left side of the page.
- Page 2:** At the bottom, a pink box points to a barcode with the text: 'Pupils must not colour in or write on the barcodes positioned at the base of each page.' Below the barcode is the text 'EXAMPLE BARCODE'.
- Page 2 of 2:** Located at the bottom left corner.

WRITING 2020

There is a greater focus on the progress children make in writing throughout the school year, as opposed to a test-day snapshot of what they know.


DfE Guidance:- TA provides a rounded judgement that:

- is based on knowledge of how the pupil has performed over time and in a variety of contexts
 - takes into account strengths and weaknesses of the pupil's performance
-
- Teachers will assess children's writing composition. Children's results for English writing will be a judgement of their work throughout Year 6.
 - Children's grammar, punctuation and spelling skills will be assessed as part of their writing, but their creativity and writing style will also be evaluated.
 - Schools will moderate their judgements with other local schools and may be moderated by their Local Authorities too.




The DfE have issued some guidance for schools.

What is the 'Expected Standard' in writing?

 Homo neanderthalensis

These thoughtful creatures lived between 1 million and 500,000 years ago. They had short and wide bodies to conserve their heat so they could keep warm when it was cold. These 'humans' moved around a lot and built many shelters using mud, leaves, sticks, and branches that could be found in their environment.

 Homo sapiens

Homo sapiens lived about 500,000 years ago. Surprisingly, these 'humans' didn't wear any clothes at all and they had almost no extra hair either. These 'humans' have straight backs than they used to when they were 'ape like', which probably means that they moved in a similar way to how we do to. It is well-known that these people were very smart and intelligent and used their understanding to hunt larger animals for food, to survive.

Dear Mum and Dad,

I miss you so much! Right now I'm fighting back my tears but it's alright because there are millions of us, so I'm not alone. The train journey was quite daunting. Lots of them were already wearing their gas masks. already. At first, I was sitting alone but a nice girl, Mary, sat next to me. Then, we instantly became best friends. It wasn't that bad after all.

When we arrived, no one picked me, no one except the awful Andersons. They only chose me because apparently I need some improvement. They only respond to Mr or Mrs and they treat me like dirt. At least it's a home. For now. Their house is a cottage with a grand garden. There is an everlasting lake, glowing from field to field. It's lovely. I wish they're lovely. I smell like a summer's day. The smell though, puey! The farm is wonderful. All of the animals are great fun but my favourite is the cow, Maisy. She's so lovely and sweet (but she is a bit lonely

Children are expected to be able to write using a range of different genres.

SCIENCE 2019

SCIENCE SAMPLING - Every two years

Teachers will assess children's knowledge and understanding of science and will judge their scientific skills according to the National Curriculum Interim Framework for Science.

Children's results for science will be a judgement of their work throughout KS2.

WHEN ARE THE TESTS?

All KS2 SATs will be held in the week beginning 11th May 2020.

The tests must be taken on the scheduled days.

Monday 11th May	English grammar, punctuation and spelling Paper 1: Questions English grammar, punctuation and spelling Paper 2: spelling
Tuesday 12th May	English reading
Wednesday 13th May	Mathematics Paper 1: arithmetic Mathematics Paper 2: reasoning
Thursday 14th May	Mathematics Paper 3: reasoning

Absence during the test period - Pupils who miss one or more component of a test and do not qualify for a timetable variation will not be awarded a score for that test.

How are we preparing?

- Continuous Assessment
- Focused Maths Lessons
- Focused Spelling Lessons
- Focused SPaG Lessons (Spelling, Punctuation & Grammar)
- Guided and Independent Reading
- Writing Assessments carried out regularly
- Practising previous SATS papers
- Teaching 'test techniques' and vocabulary
- Home Learning to support teaching & learning in school
- Target Setting
- Mentoring and support
- Keeping up to date with information provided by the DfE

HELPING AT HOME

- ▶ Support with homework and targets that have been discussed at Parents Evening.
- ▶ Read regularly and discuss a variety of texts – not just ‘listening’ to your child read.
- ▶ Short bursts of mental maths, times tables and problem solving etc.
- ▶ Use the previous test papers only if advised by school as they are used in school as assessment and practise for the children. Using the same papers at home makes it difficult to prepare the children adequately.

SPECIAL EDUCATIONAL NEEDS

Some support can be given to children who have an Educational Health Care Plan, or who may have specific learning needs.

Requests for additional time will be made by teachers using their knowledge of children and the children's individual needs.

Children who are unable to sit and work for a long period because of a special educational need, or disability, or because of behavioural, emotional or social difficulties may receive some support.

Children with English as an additional language and who have limited fluency in English may receive some support.

NATIONAL EXPECTED STANDARD

Children develop at different times and in individual ways, but at the end of Year 6 the DfE guidelines for English and maths are as follows:-

Children not meeting the WORKING TOWARDS 'Nationally Expected Standard' category for a pupil at the end of Year 6

WORKING TOWARDS the 'Nationally Expected Standard' for a pupil at the end of Year 6

WORKING AT the 'Nationally Expected Standard' for a pupil at the end of Year 6

WORKING AT GREATER DEPTH *within* the 'Nationally Expected Standard' for a pupil at the end of Year 6

For Science pupils will be grouped into 2 categories - Working at the expected standard, or a category for those pupils who do not meet the standard.

REPORTING RESULTS

- Children's progress, as well as their achievement, will be measured and reported on in school performance tables.
- Teacher assessments will be passed on to Year 7 so the results can be used in planning for KS3 teaching.
- The test results are available mid-end of July.
- Written reports are given at the end of the summer term along with your child's results and the results for school.

SCALED SCORES

- Tests at the end of KS2 will report in scaled scores.
- The 'expected standard' will always be set at 100.
- Raw scores in the test will be converted to scaled scores.
- The 'raw score' that equates to 100 might be different each year.
- Pupils who score 100 or more will have met the 'expected standard'.
- Pupils who score below 100 will not have met the 'expected standard'.



WE RECOMMEND:

Early nights and lots of sleep

Good attendance

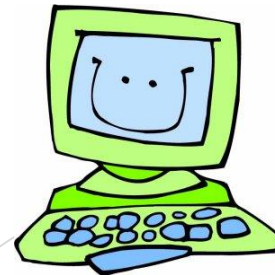
Good punctuality

A good breakfast

**LOTS OF PRAISE AND
ENCOURAGEMENT!**

USEFUL WEBSITES

- ▶ <http://www.bbc.co.uk/schools/revision/>
- ▶ This is an excellent site, providing revision help for KS2, KS3, KS 4 and KS5. This covers all subjects through activities and tests.
- ▶ http://www.icteachers.co.uk/children/children_sats.htm
- ▶ A wide range of KS2 SATs questions, from both past papers and their own team of teachers.
- ▶ <http://www.woodlands-junior.kent.sch.uk/revision/index.html>
- ▶ Revision pages at Woodlands Junior School. These revision pages support the work they do at Woodlands Junior School. They have been put together for their students to help them with their revision. Included are some sample questions taken from past Key Stage 2 SATs papers, as well as a whole host of interactive tests/quizzes.



ANY QUESTIONS?

