

# the PYRAMID Guide

NO. 16

Bi-monthly *International Newsletter*

Single Copy 75¢    Yearly Pre-Paid \$4.50    Foreign \$5.50    Vol. III, No. 4

Mar-Apr  
1975

Domestic \$4.50  
Foreign \$5.50

All Current Single  
and Back Issues  
@ 75c each



## PSYCHIC HEALING TODAY

by Joseph J. Weed

People the world over awakening to their environmental responsibility as well as to their fellowmen are beginning to take steps toward discharging these obligations. This "waking up" process also includes a growing awareness of previously unsuspected inner abilities. The most significant of these talents is the ability to heal others.

Each healer is prone to interpret this ability in terms of personal experience and conviction. Those with solid religious backgrounds generally regard a healing as the result of Divine intervention. This is not far wrong, since in most cases the higher mind or soul of the patient is called into action. A very successful English healer, Gordon Turner, felt this way at first but now regards this interpretation as an over-simplification of a very complex process. Turner believes the patient heals himself with the healer speeding up the process.

Benjamin O. Bibb III, a remarkable healer living in Connecticut, concurs. But Bibb goes a step farther. He maintains everyone can heal. Moreover he teaches anyone to heal who is willing to learn. He has already taught over one hundred pupils his healing technique! They in turn have long lists of well authenticated miraculous cures to their credit.

Bibb's methods have been called psychic healing because he seldom meets or even sees his subjects. He prefers to call it mental healing, or healing through themselves. Most doctors agree to this and some openly admit that they only assist the process. Ben Bibb's technique is to reach the inner mind of the patient and instruct it how to proceed to effect the healing required. *He informs the mind of the danger or discomfort experienced by the outer physical body and tells it how important it is that this be changed. When Bibb gets the attention of the patient's inner or subjective mind he then sends pictures, veritable scenarios, which portray what needs to be done and backs these up with a charge of energy.*

Ben Bibb is but one of many hundred psychic healers working successfully today. He is unique in that he not only performs seemingly miraculous well-authenticated cures but he has the ability to teach others to heal just as competently as he does.

Ben Bibb charges no one for his services. He is convinced that his mission here is to heal and to teach as many others as possible how to do the same. He believes that his and similar techniques will soon find general acceptance and be placed alongside current medical practice to the ultimate benefit of humanity.

## MEDITATION PYRAMID DRAWS HIGHER ENERGIES

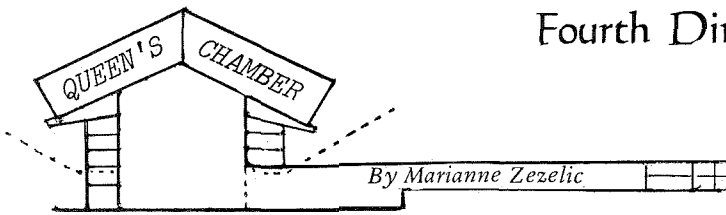
Careful study reveals many unique and beneficial qualities derived through contemplative, simple and transcendental forms of meditation. The pyramid replica, much to the surprise of experienced meditators, often adds a new and profound dimension in their quest for expanded consciousness.

If one looks further, additional instruments for heightening awareness come into activity. Visualizations, breathing techniques, posture and mantras enhance the process. Sensate activating devices such as symbols, focusing crystals, precious and semi-precious stones, amulets, incense, color and sound have been employed for centuries.

Substantial research on hand supports the value of meditation in achieving the advanced levels of "clear consciousness" and/or flashes of divine radiance suggested by meditators. Meditation helps one to still the wandering, cold, intellectual mind. A state of inner-wisdom and knowing opens beyond the so-called transcendental threshold. A listening above ordinary hearing ensues. The late western mystic Joel Goldsmith, referred to it as "The Thunder of Silence." Advocates of TM believe this moment of occurrence brings one to the experience of "A Fourth State of Consciousness" — distinct from dreaming and sleep-walking — to the realm of full objective awareness.

Students of Maharishi Mashesh Yogi, present an impressive array of charts and graphs showing transcendental meditators experience relief from insomnia, also a reduced use of non-prescribed drugs, alcohol, cigarettes. Improved mental health, personality development, job performance, learning abilities, faster reaction time; increased self control and self confidence are the rewards of right meditation. From over four-thousand testimonials, both verbal and written, among experienced and non-experienced pyramid meditators gathered throughout the globe, the open-frame, panel-less pyramid form shows the following consistently reported, eight, basic reactions: (1) A sense of weightlessness (2) Electric-like tingles (3) Feelings of warmth, usually in the upper portions of the body (4) Tranquility, relaxation and freedom from tensions (5) Dreams, vivid colors and graphic visions (6) External stimuli, sight and sound particularly drop away (7) Time distortion, more space consciousness (8) Deeper, more fulfilling meditations and higher energy levels.

Other less frequent responses include: (1) Out of body experiences (2) Clairvoyant and clairaudient activity (3) Past life recall (4) Sleep with sustaining conscious awareness, (continuity of consciousness) (5) Euphoria, and inner awareness previously unknown to the meditator, and (6) Experiencing music or color of the spheres, in the cosmic sense  $\Delta$



## A LOOK AT BIO-MAGNETICISM

The first studies of the biological effects of magnetic exposure on living tissues were made within the present decade. Thomas Edison, studied the effects of a magnetic field on a human subject by enclosing the head of a boy within a colossal electro-magnet and permitting the magnetic flux to pass through the brain. Absolutely no effects were observed at that time, but when repeated some years later by other workers, a slight effect was detected on the pineal gland.

George de la Warr of Great Britain noted in experiments conducted with a reflexograph that when a magnet was brought close to a subject, a significant change occurred in the known energy pattern of the individual. Realizing the importance of this research, Dr. Douglas Baker, an English physician discovered that certain body reflexes can be initiated by the application of an external magnetic field.

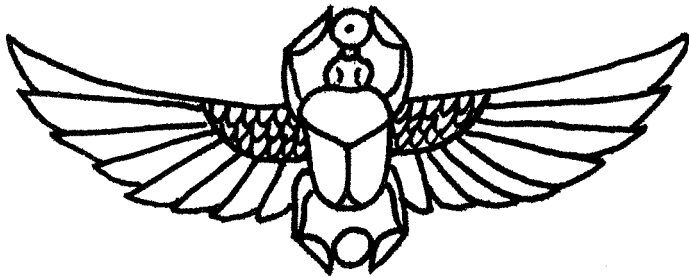
In Russia scientists continue to report that when a magnet's field is applied to blood there is a rise in effects as to coagulation and have also noted profound effects and changes during blood transfusions. Canadian scientists connected with colleges and universities are working to improve seed germination by exposing seeds to magnetic fields. The results indicate a 10% better plant yield of products on harvesting.

In our own country at the Ames Research Center in California, scientists subjected mice in well controlled experiments to very low magnetic field effects. Consistently low acid phosphatase activity occurred in cell suspensions from animals kept at the very low field intensities during incubation, as compared with the activity found in the control. A reduced cyto-enzyme synthesis rate *in vivo* (in the body) of mice appears, but no reaction rate change *in vitro* (in the test tube) is evident.

Even more exciting discoveries in bio-magnetics have been made by Albert Roy Davis, and Walter C. Rawls, both of the Albert Roy Davis research laboratory in Green Cove Springs, Florida. In their years of collaboration they have discovered that it is now possible to program the degrees of intelligence in man and animals by the proper controlled use of regulated fields of magnetic energy. Even more startling, these two men found that in early and advanced stages of cancer, when magnetic energy of the negative North pole is applied to the cancer site, a remarkable reduction in the condition and also a marked lessened further development of the cancer takes place.

It is then logical to suppose that any action of magnetism on living tissue must be related to the electrical properties of the cells and tissue. This challenges the chemical basis of all life and may well yield to an electric field theory that is in one sense more fundamental. With this in mind it seems that the science of bio-magnetics is destined for eventual therapeutic application as it enters into new vistas of understanding.

(ed. note). Further information on the new book: *MAGNETISM AND ITS EFFECTS ON THE LIVING SYSTEM*, can be secured from Dr. Walter C. Rawls, Jr. @ Suite 537, Florida National Bank of Jacksonville, Jacksonville, Fla. 32202.



Search and Research . . . Be in direct contact with Pyramid and Form Energy Researchers! We are now preparing a directory of serious experimenters, observers and groups. If you wish to be included, send name, full address and your lines of major interest to the Guide.

## THE PYRAMID GUIDE

An international bi-monthly newsletter issued Jan., March, May, July, Sept., and Nov. Annual Subscription rate \$4.50. Foreign by surface mail \$5.50. Edited and published by Bill Cox and Georgiana Teeple of EL CARISO PUBLICATIONS, P.O. Box 176, LAKE ELSINORE, CALIFORNIA, 92530.

Opinions expressed by contributing writers do not necessarily reflect those of the editorial staff and publishers of the Pyramid Guide and El Cariso Publications.

Copyright © 1975 by El Cariso Publications, printed in the United States of America. All rights reserved. No part of this letter may be used or reproduced without written permission of El Cariso Publications.

The human aura often appears in various form, color and activity. This phenomenon has created a multitude of misunderstandings between investigators and the investigated.

After training sessions with several hundred students, (auric vision can be learned), I find there can be differences in perception among viewers scanning the same subject under near-identical conditions of light, distance, background and point of focus. The resulting confusion presents enormous difficulties and credibility. Skeptics ask: "Isn't this a matter of exaggerated self-suggestion, illusion or self-delusion? or are the psychics seeing the aura at all?"

In my opinion, by any name, or whatever cognition, the aura is easily perceived with the application of a few simple techniques. The quality of the observation depends upon many additional factors, but for the novice, the wide variance of force-fields emanating in, through, from and around the human form depends on the type of energy radiations involved.

For example, the etheric body, that is usually colorless, vibrating outline projecting outward about an inch from the garment of flesh, and whose border appears as a thin black line around the human form, and corresponding in shape and movement with the body matrix, pulsates high in the cosmic spectrum. What one sees in the etheric depends in large measure upon one's own ability to come into balanced vibration with the energy tides observed. In other words, if one's vibrational range tunes above or below the precise level of sympathetic rapport, the forms, colors and densities of aura will vary.

The inner aura, usually projecting outward from the body some two feet, and seen as an elliptical envelope, and being of an astral-emotional nature, develops in another band or range of the cosmic spectrum. A separate but possibly concurrent observation can be made of its rays with the etheric contour. An activity of psychic resonance occurs enabling the viewer to apprehend both phenomena at the same time. I have felt these auras with the aurameter for several years. Then about three years ago I began to see the outer rims of these eddies with occasional bursts of color and dynamic movement. This new perception, growing from a developing tactile sense suddenly opened into a more refined level of seeing, in the manner of a groping blind man awakening to the world of (cosmic) vision. I believe this attainment or gift is not exclusive, but rather inherently available to all evolving beings and one of many touchstones along our path up the evolutionary ladder. If one chooses to activate dormant rods and cones in the retina of the eye one can safely accelerate the moment of selective, visual awareness. Conversely, if one chooses not to indulge in the higher-sense spectrum, evolution will inevitably take one to this level of observation at some future date.

Briefly, here are some of the areas in question:

(a) the various terms given to the transparent and colorless energy fields around the body, etheric, astral, emotional, inner, outer aura, mental and spirit or light bodies involved. (b) the continual realignment of forms and colors associated with these pulsations. (c) sudden change in thought, sensation or emotion causing a rapid alteration in the auric fields observed. (d) one's interpretation as to the real meaning of the colors and their relationships. (e) significance of the frequently seen black-line etheric double. (f) the vibrational frequencies of energy and octaves of color clairvoyantly seen beyond the measurable range of scientific instruments. (g) determining the exact level of consciousness in altered states. A thing cognized in one range of awareness most likely will be unobserved in a lower plane of vibration. *Bill Cox*

**AS ABOVE -- SO BELOW.** From the relentless researcher, Tal Le Vesque in his Wyoming habitat: *"The crystal form of azurite and malachite is an octahedron, (two pyramids, base-to-base). Most solid crystals of this shape vary in size, from a tiny specimen to a few inches in length. The 30,000 Bosch collection acquired by the national museum contains an azurite octahedron, about four inches across and over six inches high."* **A WONDERFUL (and terrible) FREEDOM.** Richard Roberts of San Anselmo, Calif. states in his seminar brochure...*"Since all matter possesses some form of energy, it may be subject to influence by human energy/consciousness when deeper levels of the psyche are activated... man is no longer a pawn of fate, but responsible for all that happens to him. A Law of Attraction operates; what we receive is what we have sent out in the way of unconscious vibrations. Within the context of the Third Model of the Universe we live with a wonderful (and terrible) freedom... One spins out the web of his own fate on the loom of longing."* **MORE SQUIRM PER WORM.** Hy Hunter's recent business opportunity display in Los Angeles, **HYBRIDIZED, GREAT CATCH SUPERFISH,** featured a batch of once aroused wiggly worms, with lightning-like bodily movement. Within ten minutes after placing a 12" X 12" open panel pyramid above their earthy nest, the once dormant colony of garden and fishing worms began writhing upward through the surface. Could it be the high vibes exciting the low vibrating creatures?

**720 metric ton COLOSSI of MEMNON transported 420 miles by sledge and barge?** California scientists believe they know how the ponderous COLOSSI were moved from the Gebel El Ahmar quarry downstream from Thebes on the Nile. They say the forty-seven feet high monuments were rolled on logs and placed aboard a waiting barge. Amazing! Such weight should bury the wheels of a RR flat-car.

Continuing Series



A DOWSER AND HIS ANGEL — A sketch of the late dowsing mentor, Verne L. Cameron, of Lake Elsinore.

CAMERON had his neck out a mile when he told Ira Leck of Vista, *cocksure*, to drill a new well only 150 feet away from a 700-foot dry hole in the Borrego Desert. Leck reluctantly took his advice. When the new well came in as Cameron predicted, it flowed a prodigious 2,700 gallons per minute.

He also made good at El Cariso above Elsinore, where he consistently located good water in an area noted for its dry wells.

Cameron numbers among his clients: water companies, municipal water districts, development corporations, farming interests and movie stars. He has pin-pointed big wells for the United States and Mexican governments and the United States Armed Forces, he says. Mighty wells brought in on the Mojave Desert have given him a steady flow of new clients.

Cameron is credited with the discovery of oil in Australia and New Guinea. He traced gem deposits in Canada, and has mapped earthquake faults on the Pacific Coast. He recently returned from an extensive water survey in Thailand.

Cameron has an outstanding record for locating hot mineral water wells; most notably in the City of Elsinore.

His claim to the "Diviners' Hall of Fame," if there'll ever be one, he says, rests on his unorthodox theory of Primary Water. "Men of science," he has written, "accept the primitive idea that *all water* comes from rain or snow; an idea that's about as valid as the one about storks bringing babies. Until about 1930 I too accepted the rain-snow theory. How could pure water, I began to wonder, issue from the highest mountains? What great force lifted it there?"

"Primary Water," says Cameron, "is sea water which has filtered into the sub-earth through earthquake faults in the ocean floor. As it travels great distances over the magma, it is super-heated, turning into live steam, and then is driven toward the earth's surface under great

pressure through granite fissures. This is Virgin, or Primary Water where it's found, and has no dependency whatever on meteoric (rainfall) sources," he claims. "There are vast stores of this new and delicious water all over the world."

His theory on Primary Water has brought him recognition in foreign publications. He has been interviewed several times by scientists and journalists. He's been treated as some kind of a dowsing wonder—and sometimes with scorn—on a number of television programs challenging him to locate water on the spot. So far, Cameron has performed without miscalculation.

In 1959 he lectured on his Primary Water theory before the Los Angeles Chapter of Petroleum Engineers. They gave him a generous applause. He numbers an Apollo space scientist among his close friends. Yet Cameron is painfully aware of the recurring stigma labeling him A Bum in His Own Home Town. He and his wife live in a cozy canyon home overlooking Lake Elsinore Valley.

"No one has done more for his community," he says in a defensive tone. It is true: Cameron proposed the drilling of deep wells in the flood basin to perpetuate the uncertain waterline at Lake Elsinore.

IN 1946 he appeared before a group of local people advocating lake replenishment with deep wells, and dredging the lake and forming an island to reduce high water losses by evaporation. After urging his theories on lake salvation for twenty-five years, the wells were finally drilled and brought in in 1966. Again, it turned out as Cameron prophesied. He was there to shake the governor's hand during a state dedication of the incredible bonanza with three super-wells pouring water into Lake Elsinore. Still, there are people around who would deny him the credit.

Verne Cameron continues to indulge in the hard-to-believe art of map dowsing. He holds irrefutable documents testifying to his amazing discoveries of big oil deposits in Australia, a country he has never visited. The words "It can't be done" only challenge the redoubtable dowser to greater heights. But over-optimism has led him into trouble.

### SUBSCRIPTION ORDER FORM

- The Pyramid Guide, bi-monthly, International Newsletter . . . Single Copies **75c each**
- New or Renewal subscription, yearly prepaid **\$4.50**. Foreign by Surface Mail **\$5.50**.

Mail Postpaid to: . . . . .  
Street or P.O. . . . .  
City & State . . . . .  
Zip . . . . .

**ORDER FROM:**  
**EL CARISO PUBLICATIONS**  
P.O. Box 176  
Elsinore, CA 92330

### HISTORY UNDER THE SEA

ONE DAY CONFERENCE, FEB 16, 1975, HOLIDAY INN 10740 WILSHIRE BLVD. WEST LOS ANGELES, CALIF. SPEAKERS: DR. J.M. VALENTINE—"BIMINI, ATLANTIS & BERMUDA TRIANGLE." COL. GERALD LA ROCCA—"SPACE & THE SEA" MAXINE ASHER—"PSYCHIC ARCHEOLOGY & THE SEA." MORE.. FOR RESERVATIONS -- PHONE: ANCIENT MEDITERRANEAN RESEARCH ASSOCIATION -- LOS ANGELES 213- 826 - 6304.

## CRYSTALS, FORM AND PSYCHIC ENERGY

Pure rock crystal, because of its hardness is uncorrupted by time, oxidization or decay. When squeezed or released nature's electronic crystals display piezoelectric effects. Crystals vibrate at precise frequencies and possess positive and negative energy fields.

Quartz crystal is the mineral symbol for the 2,000 year Aquarian age which began about 1890. In our time, man-plant communication is a proven fact. Conscious rapport between man and mineral through the use of crystals has been understood in esoteric circles for thousands of years.

Crystals present exciting possibilities in experiments with PK (psycho-kinesis) moving objects solely activated with mental energy, scrying (crystal gazing), bio-energetics and levitation. These phenomena — according to the mail we're receiving — are rather common occurrences and not limited to the occult community.

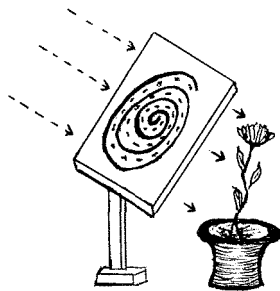
Refined techniques for applying the human psyche to vibrate in harmony with crystals beckons a return of the ancient, nearly forgotten sciences. These include alchemy, geomancy, magic and form energy. Modern technology in our communications, the telephone, television and radio would be inoperable without the use of crystals.

In the early priestcraft crystals were regarded as frozen holy water — heaven sent talismans. Clairvoyants down through the centuries have delighted in their application as meditation stones, pendulums, aural feelers, glyph-inscribed and carved pendants, crosses and in fortune telling as a crystal (ball).

Frank Dorland, Bio-crystallographer of Santa Barbara, California, in his pamphlet **ROCK CRYSTAL, Nature's Holy Stones**, writes:

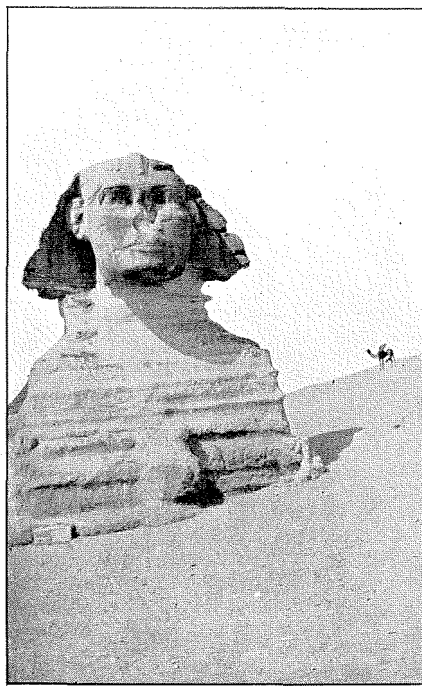
"True crystal gazing has been defined as the science of inhibiting normal outward consciousness by intense concentration on a polished crystal. When the five senses are thus drastically subdued, the psychic receptors can function without interference. Exactly why this alteration of consciousness works so well with crystal is not precisely understood. Many scientists and psychologists believe there is an energy interchange between certain portions of the brain and crystal. Thought waves as energy are very similar to radio waves. It is believed the crystal mass acts as a filtering antenna and amplifying reflector to the psychic receptor centers. Waves of energy from the brain triggers the crystal into activity which in return stimulates the sleeping psychic centers to awaken and function."

The *Urim* and *Thummim* associated with the high priest's stone encrusted breastplate, and referred to in the old testament, most likely involved an additional two crystals (divining stones), one clear and the other smoky crystal to symbolize night and day, and the duality of opposites. Vibrations, wave-fronts and resonance issuing from crystals in rhythm with man's psychic oscillations, and their interplay suggests an attainment of higher levels of awareness and a loving rapport with all life.



## FORM ENERGY DEVICE

A non-conductive disc with metallic spirals, interconnects on both sides of panel to enhance plant growth. Light shining through the symbolic pattern provides the stepped-up energy source.



*the mystery of the sphinx  
is mystery of our self  
our hidden half  
unknown in darkness  
waits to be discovered  
this Goddess of the dark  
whoes face is blurred  
eroded body parts  
and missing breasts  
is nothing but our self unmet  
without the meeting of this Goddess  
no mating of that inner God and Goddess  
can take place  
no child of wholeness  
conception of the One  
you sphinx, the key to Cheops pyramid  
of base that's touching  
the four corners of the universe  
can show the way to pyramid's top single point  
the doorway to our higher consciousness*

Vijali Clark

## REFLECTIONS FROM THE THIRD INTERNATIONAL FESTIVAL OF ESOTERIC SCIENCES AND YOGA (TORONTO, CANADA — JULY, 1974)

## A KALEIDOSCOPE OF COLOR:

Dr. Bernard Jensen of Hidden Valley Health Ranch, Escondido, California, owner of one of the world's finest color libraries — a man who really knows his hues — gave an outstanding color presentation.

Dr. Jensen pointed up the virtues and vagaries of various colors and their combinations: "White, with its seeming absence of color contains all colors with a pureness seldom understood," he said. "Black, on the other hand, supplies the necessary contrast. It has its place, but black can be depressing, at least not uplifting. Black is darkness as opposed to light" he added. "There are seven colors, and there are hues . . .

"Red stimulates, excites. It is a color of passion. Overstimulated people can be calmed by blues, which are a sedating, serenity force in the spectrum. Yellow, from a spiritual standpoint, is a joy color. All natural laxatives are made from yellow vegetable and fruit sources. By contrast, black foods (blackberry juice for example) are astringents.

"Did you notice," he asked, how the seasons run through the spectrum, corresponding to the colors in their proper sequence? Green is a great rejuvenating color. It is also soothing and restful. Green foods are basically nutritious and good. They are great blood builders."

Pink, according to Dr. Jensen, is a joyous, festive color, while brown is an earthy tone. Dr. Jensen's program included an excellent reel of color movies, showing harmonious vibrations from nature's creatures and life forms.



## One of a Kind SUPERTENT . . .

This most unique, multi-peaked, student activities structure now appears on California's, La Verne College campus twenty-five miles east of Los Angeles. Over 8,000 square yards, (one acre plus), of teflon-coated fiberglass, combined as ceilings and walls are supported by a network of taut cables attached to four, 68-foot, water-filled columns. The great tepee-tops shelter the school's former football field and its new polyvinyl chlorid Uniturf.

*Supertent* serves as a center for gym-type athletic and social events. The huge, innovative form also encloses a fine arts section, book store, campus media center, photographic darkroom, cinema and post office. Well lighted, inlaid hardwood walkways interconnect the various locales of recreational activity inside.

The following letter was forwarded to us by Peter Tompkins, author of *SECRETS OF THE GREAT PYRAMID*, and *THE SECRET LIFE OF PLANTS*.

Dear Mr. Tompkins, Your book, *Secrets of the Great Pyramid*, I found most interesting, especially the chapter dealing with contemporary findings. I began in November '73 making models of the Great Pyramid. Since your knowledge in this area is greater than my own I want to share my experiences with you.

At first, I began assembling cardboard and paper models, the largest had a 22½" sq. base. I suspended it from the ceiling with a 12" piece of thread. As the pyramid turned eliminating the tension in the thread I tried to align the form with magnetic north without making another hole in the wall. When I returned to the room several hours later I observed the pyramid was already aligned with magnetic north of its own accord. I repeated this simple procedure many times using both larger and smaller forms. My home has electric heating, thus reducing air currents, and the door was kept closed. With such precautions I have noticed the pyramid does align with the magnetic pole more times than not.

I have since constructed two small masonite 7" base pyramids. Beginning in March, I noticed the forms were not aligning themselves properly. The local airport advised me the true north alignment for this area was 8½ degrees west of magnetic north. With a compass setting I found the pyramid was and still is, aligning to the true north pole. This alignment occurred when all thread tension had released, and with no air movement present. Ten per-

cent of the time one point will align...  
Union; Mr. Alex Tanons of Portland, Maine,  
some kind of relationship with the sun's movement.

I explained this to a guest lecturer visiting Kansas State  
a well known psychic. He thought the pyramid may also have  
I feel this observation would be well worth further study.

If you know of any research dealing with this area of study I will greatly appreciate hearing from you.

Tim Ballingham 2726 Brockman, Manhattan, Kansas, 66502, 913 - 539 7127

Dear Bill,

Here are some impressions made after my September trip through northern California and the Oregon coast. I inspected one warp called "Gravitation Point, east of Berkeley, on the intersection of a due west line from Mt. Diablo and a due south line from Mount Shasta. Friends alerted me to the existence of track lines later. This warp wasn't as active as some I have witnessed. Later on I found a line from Gravitation Point to Mt. Hamilton, near San Jose, Calif. crosses through the canyon warp. Then on highway 101, near Cape Blanco, we found objects about twelve feet distant appeared to be of varying size in certain directions. But this effect would reverse at times on a cycle varying from seconds to several minutes. My sighting equipment was makeshift making observations mentally difficult in such a strong magnetic area. I estimated the maximum mass changes at 7% to 10%. The general feel of the area was comparable to the Gold Hill vortex in intensity. No magnetic compass readings were attempted. NASA has used certain wavelengths of InfraRed photography showing vortexes as swirling spheroid areas. A pole carefully balanced within a warp will remain upright much longer. When it does fall, its speed of fall will be visibly slower serve to conduct the flow of earth energy between mountaintops and other physical features. As observed from the air, these tracks appear straight, usually narrow, The more tracks intersecting in a center, the greater the magnitude of energy around the center. Finally in regard to PSIONIC measuring equipment... One who is skilled with the pendulum, forked-switch, wand, rod, tuneable psionic machine, or whatever Dowsing device employed, can locate these vortices, either locally or by remote locating, and determine the lines of energy flow, directional changes and energy fields within such areas. Incidentally, a plumb-bob suspended over a concentric-circle target paper will indicate warp activity. The "still" bob when set in motion expresses greater travel in certain directions.

Doug Steinmetz, Eugene, Oregon

Dear Sirs,

Your name was given to me by Mr. C. Williams of the North Star Pyramid Company, East Bridgewater, Mass. At present I am using a pyramid for healing purposes and one for sharpening razor blades but cannot yet state the degree of success. It does seem evident that I am sleeping much better and winning a personal health battle. And the "picking-up" started at the time I commenced using the pyramid. I intend giving one to a friend who has harmful emanations coming up through the floor (noxious earth rays, eds.) under her bed just as soon as I see her.

I plant by the moon cycles in the garden and find it works. Also, I use the pendulum to check out companion plants where trace elements are needed, and of course stay clear of poisonous elements (chemicals). As a result my garden is one of the best on the road. This shows nature knows best. I have little money to spend and stick to manure and natural methods in the garden. Other people on the road spend enormous sums on chemicals and then come to me saying they have diseased lawns and flower beds. With homeopathy I use the pendulum extensively, also in Dowsing for water, minerals and etc... Map dowsing with rods and the pendulum saves time and effort as I can check exactly where I need to go before setting out on foot from the house.

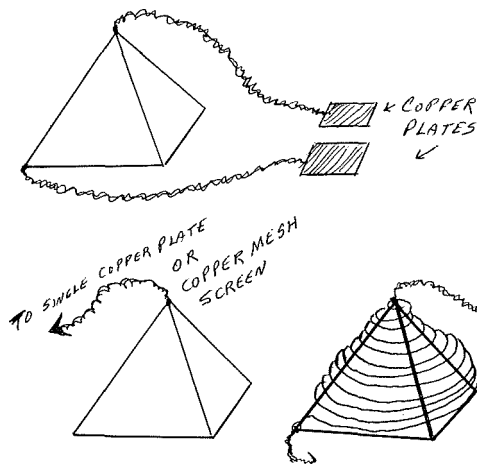
yours faithfully, Mrs. S.A. van Niekerk, Salisbury, Rhodesia.

Dear Sirs,

I recently did a study on different dowsing instruments. I found it necessary to borrow one of your fine instruments, (the Cameron AURAMETER) for this test... The full potential of this type device can't be determined, unless in field tests and at a distance... I didn't know the location of the material sought. Your instrument performed well as I thought it would.

Rev. Henry A. Etchason, Detroit, Mich.

## THE 'GUIDE REPLIES . . .



Q. In some of your earlier reports you indicated that pyramid and cone energies could be projected outside the form to work on specimens some distance away from replicas or cone shapes. You also alluded to the possibility of interconnecting two or more models to step up the power generated by these forms. Can you be more specific? We have a small research lab and have come up with some interesting things. We will be happy to report the results of our findings where you may share them with you readers.

K.J. Keltus, Prague, Czechoslovakia

A. There are various methods for attaching copper wire to the forms used. With pyramids and cones the primary source of energy issues from the apex. Thus one begins at that point. When two or more wires are employed it is best to connect the second wire to a base corner (if pyramid), or anywhere along the base rim of a cone. Cylinders, cubes, spheres, tetrahedrons and other forms require different handling, and will be covered in future issues of the Pyramid Guide. Where several pyramids are connected, apex to base corner to apex, and etc, serves best. The diagram on the left was suggested by our valued and knowledgeable friend, Thomas Allen Le Vesque, aficionado of the hollow earth theory, writer-publisher at large.

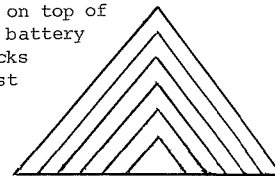


From Dennis Brock, East Highlands, Calif.

Q. Last year a friend of mine driving down from Oregon, had a car breakdown in the town of Mount Shasta. A man he met there said that he was supposed to have car trouble at that particular place, saying that Shasta was a very powerful mountain. Later, on a trip to Oregon I passed by Mount Shasta and noticed that except for a crater that protrudes from its western side, Shasta is pretty much pyramidal. I would also like to have your comment on my hypothesis that if a pyramid generates and accumulates energy, then a series of pyramids, each larger than the next, if placed one on top of the other, would the energy be increased and concentrated in the smallest, central pyramid? If when a battery is used, some energy is depleted. If the Great Pyramid is made of a series of pyramids -- stone blocks laid one atop another, and if these stone blocks contained a certain alloy which through the years lost some of their force, the powers once possessed by the ruling class of Egyptians or a very small elite would not easily be discovered today. The knowledge of how to use this energy to impress and subdue the people of the Egyptian Empire may have depended on this giant battery. Incidentally, a friend of mine lives in a tip... a conical structure. There is a very nice feeling inside.

A. Mount Shasta is considered by UFO oriented people, mystics, and students of the esoteric as a holy place, a UFO base, the hollow earth home of the last beings of the ancient Lemurian civilisation, a magical magnetic center, and one of the earth's acupuncture points, or even its Chakra of many Chakras the world over. Shasta's magnetic properties may be among many energies focused there, according to the aforementioned sources.

In considering the Great Pyramid as a giant battery or power generator, we continually receive letters and other input suggesting this ancient wonder possesses a tremendous power source within one of its hidden chambers or within the pyramid's inverted counterpart lying just below its true foundation. This information usually comes through clairvoyant means or intuitional impressions from people in all parts of the world. We don't have any useful data on the concept of placing pyramid within pyramid, or stacking as a way of increasing the outer structure's inner power.



Q. "Would you care to comment on the 'bions' mentioned in Wilhelm Reich's ORGONE research? Donald A. Moquin, Puerto Rico.

A. Bions as we understand them, may be the very origin of life, energy vesicles, basic life energy units of Orgone, and found within all organisms. Bions are produced in autoclaved and heated containers, using a mixture of moss and earth in a sand culture experiment. The dry moss is heated to a high temperature and left to swell in sterilized water. Small vesicles attach and expand like protozoa. Then the life activity gathers with membranes, with movement following. At night or in darkness one can presumably observe radiations. A wavy, bluish vapor may also be seen. Orgone (organic) substance is animate, as opposed to inorganic (metallic materials for example) as unmovable substance. The basic Orgone energy is what makes the animate object move. The Orgone moving in an accumulator appears to be more active during sunlight hours. Reich also believed the Orgone is taken into the system through breathing. This life force may be related to the often mentioned, VITALITY GLOBULE or PRANA ELEMENT.

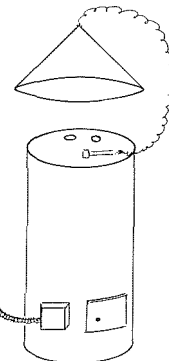
Q. Can you tell me how I can secure instructions for making my own ORGONE BOX? Lennie Haynes, Great Falls, Montana.

A. The various books by Wilhelm Reich, (we have Orgone Energy, by Jerome Eden in our catalog), show ways one can construct such a unit. John B. Coelho, of Seattle, Washington, advises us one can secure instructions for building an Orgone Box by writing to: ORANUR RESEARCH LABORATORY, PO Box 27, Ottaville, Pa. 19103.

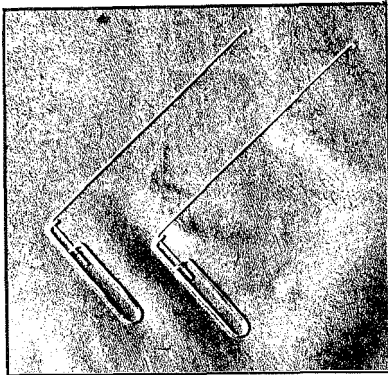
Q. We are a small research group and interested in your comments on psychic energy, or prana activated by the pyramid replica. Anything you can add will be appreciated, as we may have some exciting tests to share with you after further testing. L.L. Sampson, Memphis, Tenn.

A. The present issue of the Pyramid Guide goes into more detail on the beneficial effects reported through meditation. We believe the pyramid replica enhances this experience. Psychic energy plays an important role in one's awareness development. Watch for an announcement by Neville-Spearman, English publishers, announcing Dr. Dennis Milner and Edward Smart's new book, showing photographs of the vitality globule taken in total darkness. It is called THE LOOM OF CREATION, and called to our attention by the lovely and quite remarkable English lady, Brenda Selby Johnson.

A NOVEL CONE - DOWSING DISCOVERY... FROM VERNE L. CAMERON'S NOTEBOOK, OCTOBER 22, 1952.  
FROM THE FORTHCOMING BOOK "THE AMAZING CAMERON CONES" BY VERNE L. CAMERON AND BILL COX, AND PLANNED FOR PUBLICATION IN 1976.  
"ACCIDENTALLY BROKE A RUSTED, THIRTY-FIVE YEAR OLD WATER PIPE AT THE CORNER OF THE HOUSE. DIDN'T KNOW WHERE THE WATERLINE NETWORK WAS. WATER SQUIRTING ALL OVER AND I DIDN'T KNOW WHERE TO TURN IT OFF. IN DESPERATION I RAN A WIRE FROM THE TIP OF A 2" ALUMINUM CONE TO THE WATER HEATER. MY AURAMETER PULLED TO ANY PART OF THE LINE WITH GREAT FORCE. I FOLLOWED THE PIPELINE WITH ALL ITS CROOKS AND TURNS -- EVEN WITH MY EYES SHUT. THE AURAMETER LED ME THROUGH THE OLIVE GROVE TO AN 8" WIDE DITCH. ABOUT 40 FEET DOWN THE DITCH -- I HAD PREVIOUSLY MISTAKEN FOR A WASH--A TWO INCH WATER LINE EMERGED RUNNING TO A SMALL TANK A HALF MILE AWAY. THE TANK WAS A RECEIVER FOR A SPRING IN THE MOUNTAIN ANOTHER ONE AND ONE-HALF MILES BEYOND. EVEN AT THAT DISTANCE, WHERE THE CONE WAS ATTACHED TO THE WATER HEATER, THE AURAMETER'S ATTRACTION TO THE PIPELINE WAS INTENSELY POWERFUL.  
THE FOREGOING DISCOVERY LED TO ANOTHER SIMILAR EXPERIMENT WHERE I DROPPED A CONE-CONNECTED WIRE DOWNWELL WHICH WAS CONNECTED TO THE PUMP ASSEMBLY. I CHECKED THE DIFFERENCE IN THE STREAMLETS FEEDING THE WELL.  
"I LATER PLACED A CONE IN THE TRUNK COMPARTMENT OF MY CAR AND RAN A WIRE FROM IT TO THE WELL PUMP. UPON CHECKING THE EMANATIONS AROUND THE TOP OF THE WELL I FOUND A LARGE IRREGULAR CIRCLE REGISTERING A VERY HARD PULL ON MY AURAMETER. WHEN I TURN THE WELL MOTOR ON, I FIND IT IS FED BY TWO SPRINGS NEARBY, ALSO SERVED BY AN EARTH FAULT ABOUT 80 FEET WIDE.  
"I BELIEVE THE POTENTIALS HERE FOR A PSYCHIC-TYPE MEASURING (DETECTION) DEVICE, OR CONE-DOWSING MACHINE SHOWS GREAT PROMISE. ONCE UNDERSTOOD, THIS UNIQUE SENSOR SHOULD REVEAL ANYTHING LOST, HIDDEN OR OF UNKNOWN ORIGIN LYING UNDERGROUND. NO PARTICULAR SKILLS OF THE DIVINING OPERATOR ARE REQUIRED."



# THE 'GUIDE RECOMMENDS . . .



**SWING RODS** nickel-plated, high precision, non-friction dowsing rods. For the utmost in sensitivity balance and dowsing response as underground water and gas pipe, electrical and conduit locators. These instruments far surpass ordinary "L" rods made from clothesline and clotheshanger wire, welding rod and similar metallic materials usually overgripped and improperly held by dowsing buffs. \$5.50 per pair, add 50¢ for postage and handling. c/o The Pyramid Guide.

### "Healing and Health"

The annual Phoenix Psychic Seminar, March 6th, 7th, 8th, & 9th, 1975, at the J. Newton Sands Hotel, Phoenix, Arizona. Some of this country's finest speakers will be on hand. **SEND FOR FREE BROCHURE % THE 'GUIDE.** I'll present lectures and a workshop. See you there . . .

### Interested in E.S.P.???

-then you will enjoy the E.S.P. ORBIT a monthly newspaper on Metaphysics, Psychics, Parapsychology, Magic and the Occult for the open minded seeker - including more & more coverage of where its at locally in many parts of the country. Sample copy 45 cents or one yr. subscription \$5.00 E.S.P. Orbit Inc. P.O. Box 223 Lancaster, Pa. 17604.



Just added to our book catalog from England:

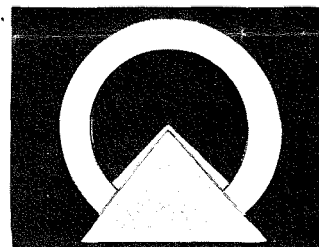
**INTRODUCTION TO THE CHAKRAS**, Paths To Inner Power, by Peter Rendel, one of the most remarkable, capsulized work on a complex subject.

Mr. Rendel is an acknowledged master bridging the eastern and western schools of esoteric thought. In soft cover @ \$1.95, % the 'GUIDE.

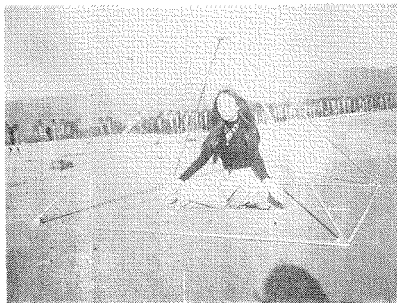
Subjects covered include: Basic polarity, The four pole magnet, Qualities of the five lower chakras, Tattwic tides, Brow and Crown centers, Breath and the chakras, practice, The right use of energy, Chakras and astrology.

**RAINBOW FESTIVAL '75**, - Sheraton Waikiki Hotel, June 3-10, 1975. Lectures, readings and counselling. Tour arrangements available. Write for free brochure % The 'GUIDE. Bill Cox also scheduled for appearance, looks forward with great pleasure the opportunity of meeting our Hawaiian-based subscribers.

**LIFE FORCE KEY** pendant, ancient 5000 year old symbol of wisdom ( gold finish with 24" necklace chain, \$5.95 ) Once worn by Pythagoras, Thales, Solon and Plato.



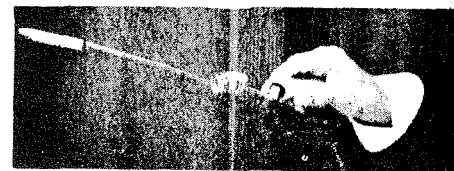
NOW AVAILABLE - A portable do-it-yourself **MEDITATION PYRAMID KIT** now offered for sale with instructions by the Pyramid Guide. As power develops along ridges and corners without loss of energy minus panels, corners and capstone apex can be purchased as a unit. Buyer can secure lengths of 1/2" tubing at local hardware or plumbing shop, placing ends inside slots at corners to construct framework for desired height. Write for Meditation Pyramid Brochure, El Cariso Publications, P.O. Box 176, Elsinore, Ca. 92330.



**Pyramid House Plans \$1.00**  
Delta Structures  
Dept. P.G. 15 Box 2382  
Norman, Oklahoma 73069



Yes . . .



**We Honor**

**MASTER**

**CHARGE**

**on all**

**Books and**

**Product**

**Purchases**

The Original Cameron Aurameter, World's most Sensitive Dowsing Instrument, (Combination water compass, weighing device, and upright pendulum) \$49.50. Over 4,000 in use worldwide today. Exclusively available through El Cariso Publications. Write for Free Descriptive Brochure. P.O. Box 176, Lake Elsinore, Ca. 92330.

### FOUNTAINHEAD

"The Fountainhead", an informative periodical describing psychic, astrological, metaphysical, and occult activities in and around Tucson, Arizona. The Fountainhead is also the source for books, gifts, lectures, and seminars on the occult, operated by Bob Moser and Vergie Trice. Location: 4044 N. First Ave., Tucson, Arizona, 85718 \$2.00 yearly.

## PSYNETICS FOUNDATION



- Self-Discovery
- Psychic Development
- Spiritual Growth

- LECTURES • CLASSES
- RESEARCH PROJECTS

Write: Psynetics, Dept. PG  
1212 E. Lincoln Ave.  
Anaheim, CA 92805  
(714) 533-2311

### "The New Atlantean Journal"

A new concept in total reporting! An Occult/UFO/Forcean information outlet featuring factual news events in all these fields. Scientific and analytical articles by well known authors, National and International UFO reports PLUS a Person to Person CONTACT page, Predictions and Psychic experiences! \$4.00 yearly on a quarterly basis - Foreign \$5.00. 4280 68th Avenue North, Pinella Park, Fla. 33565.

# HERE & NOW

is North America's most complete monthly guide to New Age events.

HERE & NOW features:

- ▶ The Uni-Com Calendar --- giving times, places, fees & descriptions of hundreds of classes, films, lectures & services every month.
- ▶ Up-to-date reports on discoveries suppressed by the news media.
- ▶ A guide to organizations, counselors & teachers in your area.

One year \$6.50 prepaid (\$7 if billed). Name: \_\_\_\_\_  
Two years \$11.50 prepaid (\$12 billed). Address: \_\_\_\_\_  
Foreign: \$10 per year, prepaid. \_\_\_\_\_  
Payment enclosed

Send to: UNI-COM, Box 11716-A, Palo Alto, Ca. 94306, U.S.A.

finest spiritual and scientific information in the psychic field.

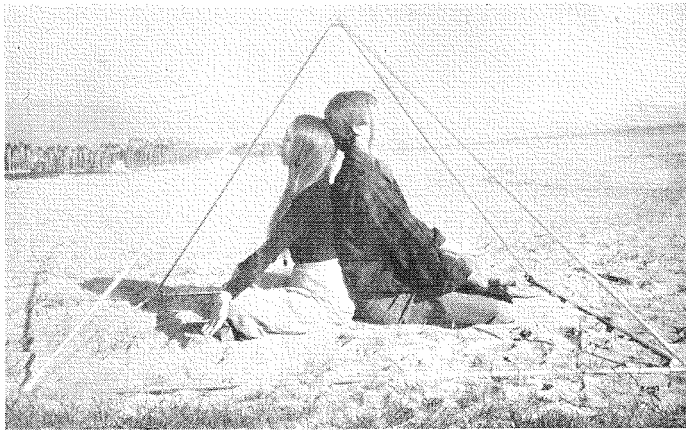
THE *Psychic Observer* SUBSCRIPTION FORM  
and CHIMES  
E/S/P/ress, Inc.  
ONE YEAR (12 issues) \$7.50  
Canadian and Foreign Subscriptions \$9.50 per year

NAME \_\_\_\_\_

STREET \_\_\_\_\_

CITY \_\_\_\_\_ STATE \_\_\_\_\_ ZIP \_\_\_\_\_

MAKE CHECK PAYABLE TO *Psychic Observer*  
Box 8606, Washington, D. C. 20011

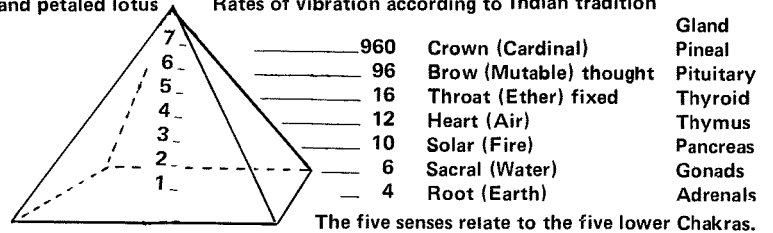


**TWO IN COSMIC POSTURE**

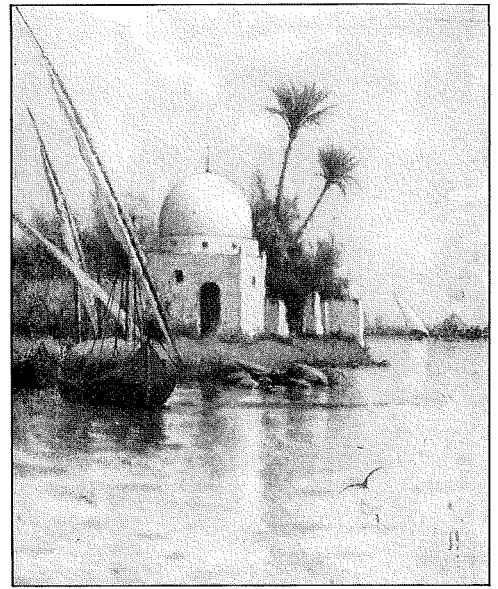
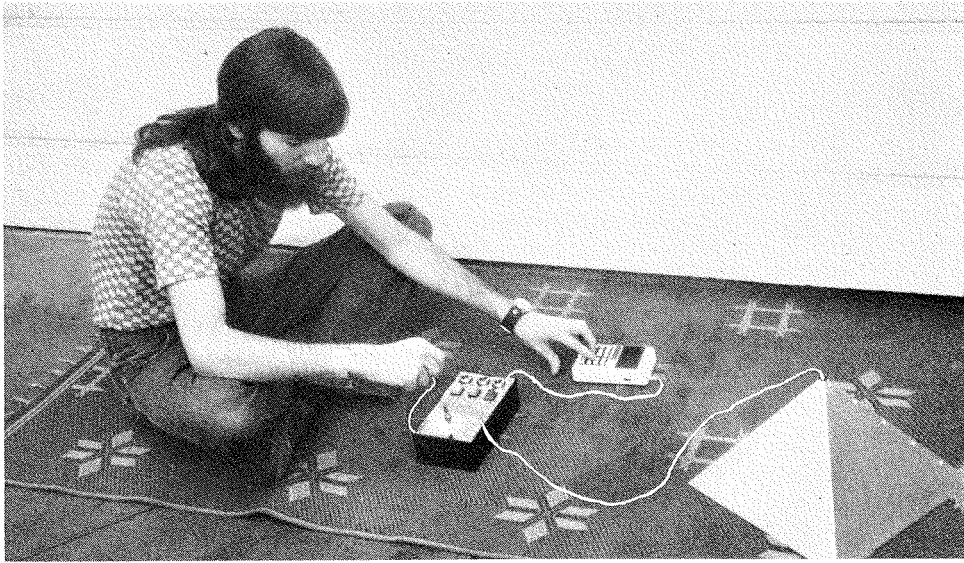
Vijali Clark (L.) (see her sphinx poem in this issue), and Bud Robinson on the beach at Santa Barbara, Calif. These two beautiful souls combine in attitude as separate halves of a human pyramid to form new and interesting psychic energy configurations within the open frame model. *Experiment Suggested by Dusty Young of Atlanta, CA.*

Thousand petaled lotus

Rates of vibration according to Indian tradition



It appears that the meditation pyramid acts upon the subject in the manner of a dynamometer, a device for measuring mechanical force as a balance in automobile testing. The open-frame pyramid, because of its unusual form energy gathering quality, collects and distributes extremely high vibrations. The pyramid's shape contains several energy fields, polarities and dimensions of cosmic-like power, possibly bringing the Chakras (human energy centers) into dynamic balance, and subsequent harmony into the awareness of the meditating subject. "The colors, (light vibrating at different frequencies) thrown off by the Chakras, depend upon their speed of revolution. A corresponding sound may be found associated with each Chakra." (From Peter Rendel's INTRODUCTION TO THE CHAKRAS, Paths to inner power.)



**PSYCHOMETRIC ANALYZER . . .** Scott Moyer, Santa Barbara, Calif. researcher's version of a Dowsing Machine evolving out of the Bovis-Brunler Biometer, (see Pyramid Guide Newsletter #6 and the Banjo Device in #7.)

Innovations include replacing metric scale with electronic calculator readout and using primary colors of red, blue and yellow as key-in for registering different functions of the psyche.

Calculator readout provides a definite mathematical symbol while confirming degree readings of intelligence, quality and purity. Far more accuracy is encountered than with the usual metric-scale ruler. Pendulum is held in one hand enabling calculator readout to easily be manipulated with the other. Dowser's attention then can be focused fully on pendulum's movement across clock-face chart.



P.O. Box 176  
Elsinore, ca. 92330

**FIRST CLASS**

