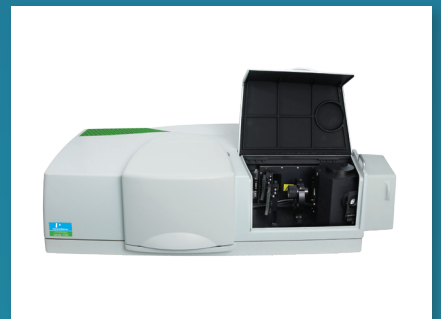


LAMBDA 850+ UV/VIS AND
LAMBDA 1050+ UV/VIS/NIR
CONSUMABLES AND ACCESSORIES



INTRODUCTION AND OVERVIEW

Today's advanced and increasingly diverse Advanced Materials laboratories are facing new challenges on a daily basis - starting from raw materials right up to the finished product. PerkinElmer's comprehensive portfolio of analytical solutions is designed to give you the higher accuracy, sensitivity, and ease of use your laboratory demands for examining with confidence, the purity, composition, and performance of your compounds. What's more, a range of complementary services is available to keep your laboratory up and running, meeting the stringent requirements of a variety of environments and working practices.

Better insights for better products.

CHOOSE PERKINELMER.

The LAMBDA High-Performance (HP) Series of UV/Vis and UV/Vis/NIR Spectrometers are the industry standard for high performance, flexibility and convenience. All consumables and accessories in this guide are compatible with LAMBDA 650, 750, 850, 950 and 1050 series models unless indicated otherwise.

TRUST THE CONSUMABLES
ENGINEERED
FOR YOUR INSTRUMENTS



Table of Contents

CONSUMABLES	3
Lamps	3
Deuterium Lamps	3
Tungsten Lamps	3
Other Accessories and Replacement Parts	3
Calibration and Recertification Solutions	4
Photometric and Wavelength Accuracy Reference Material Set	4
Stray Light Solutions Reference Material Set	4
Pharmacopoeia Solutions Reference Material Set	4
Reference Mirror for Reflectance Spectroscopy	4
Recertification Program for UV/Vis Calibration Reference Materials	4
Calibrated Diffuse Reflectance Standards	5
Calibrated Diffuse Color Standard Sets	5
Uncalibrated Diffuse Reflectance Standards	5
Cells and Reference Materials	6
Macro Cells with PTFE Lid	6
Macro Cells with PTFE Stopper	7
Semi-Micro Cells with PTFE Lid – Black Sides	7
Semi-Micro Cells with PTFE Lid – Clear Sides	8
Semi-Micro Cells with PTFE Stopper – Black Sides	8
Semi-Micro Cells with PTFE Stopper – Clear Sides	8
Micro Cells with PTFE Lid – Black Sides	8
Micro Cells with PTFE Stopper – Black Sides	8
Ultra-micro Cell with PTFE Lid	9
Ultra-micro Cell with Pipette Tips	9
TrayCell™	9
Caps for TrayCell™	9
Cylindrical and Flow-Through Cells	10
Cylindrical Cells – Macro with PTFE Stopper	10
Flow-through Cells	10
Replacement Tubing	10
Lids and Stoppers	10
Disposable Cells	11
Macro Cells	11
Micro Cells	11
Semi-micro Cells	11
Cell Rack	11
ACCESSORIES	12
Cell Holders	12
Cell Changers and Thermoelectric Accessories	12
Sampling Modules	13
Specialized Accessories	14
Diffuse Reflectance Accessories	15
Specular Reflectance Accessories	15
Polarizers / Depolarizers	16
General Purpose Optical Bench / Accessories	16
Fiber Optics Accessories	16
Sippers	17
Autosampler System & Supplies	17

CONSUMABLES

Lamps

Our long-lifetime deuterium and tungsten source lamps provide the best wavelength coverage across the working range of the spectrometer for consistently high performance. All lamps are pre-aligned and can be easily changed by anyone. Our extensive quality control and inspection process demands the very best quality sources to provide high sensitivity and stability for your key measurements.

Deuterium Lamps

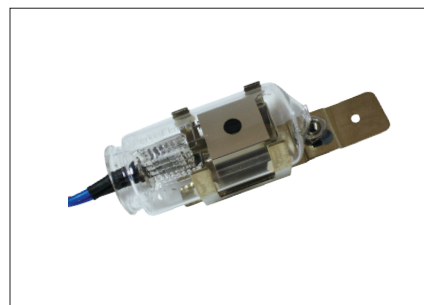
Description	Part No.
Long Life Deuterium lamp <i>Pre-focused and pre-aligned.</i>	L6022728

Tungsten Lamps

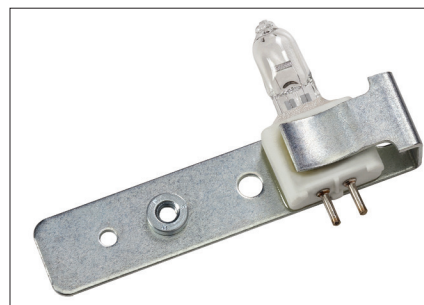
Description	Part No.
Tungsten-halogen lamp <i>Pre-focused and pre-aligned.</i>	B0114620

Other Accessories and Replacement Parts

Description	Part No.
Optical Breadboard Base Plate, Sample compartment <i>Optional replacement for standard sample floor.</i>	N1016002
Set of Sample Compartment Windows <i>Included with LAMBDA 650/750/850/950/1050 series spectrometer systems.</i>	B0505982
Reference Beam Attenuator Kit <i>Includes 5 magnetically mounted attenuator screens, 32%, 14%, 6%, 4% and 1% T</i>	L1160560
Magnetic Attenuator, 10% <i>Used to provide additional attenuation when measuring high absorbance materials.</i>	L6020276
Magnetic Attenuator, 1% <i>Used to provide additional attenuation when measuring high absorbance materials.</i>	L6020277



Deuterium Lamp (L6022728)



Tungsten Lamp (B0114620)

Calibration and Recertification Solutions

Photometric and Wavelength Accuracy Reference Material Set

A set of reference materials used to verify the ordinate and abscissa (wavelength) accuracy of UV/Vis and UV/Vis/NIR Spectrometers.

Description	Part No.
Photometric and Wavelength Accuracy Reference Material Set	B0507805

Stray Light Solutions Reference Material Set

Set of reference materials comprising four solutions in sealed cells – one reference solution and three test solutions.

Description	Part No.
Stray Light Solutions Reference Material Set	B2500099

Pharmacopoeia Solutions Reference Material Set

Set of reference materials comprising six solutions in sealed cells – two reference solutions and four test solutions.

Description	Part No.
Pharmacopoeia Solutions Reference Material Set	B2500100
European Pharmacopoeia 5.2 Addendum Kit	L6025049

Reference Mirror for Reflectance Spectroscopy

This mirror is required to verify the specular reflectance calibration of PerkinElmer and Non-PerkinElmer reflectance accessories.

Description	Part No.
Reference Mirror for Reflectance Spectroscopy	N1010504
UV/Vis/NIR Second Surface Reference Mirror	L6310204

Recertification Program for UV/Vis Calibration Reference Materials

To guarantee the integrity of your Reference Material set they must be recertified at periodic intervals.

Description	Part No.
Recertification Program for UV/Vis Calibration Reference Materials	N1010539

Calibrated Diffuse Reflectance Standards

For establishment of photometric accuracy and linearity in diffuse reflectance. Reflectance calibration is NIST® traceable. Calibrated 250-2500 nm reported each 50 nm. Disc included with data each 1 nm.

Description	Reflectance Factors	Part No.
Set of 4 calibrated 1.25" diameter diffuse reflectance standards	99%, 75%, 50%, 2%	PELA9010
Set of 4 calibrated 2.00" diameter diffuse reflectance standards	99%, 75%, 50%, 2%	PELA9011
Set of 8 calibrated 1.25" diameter diffuse reflectance standards	99%, 80%, 60%, 40%, 20%, 10%, 5%, 2%	PELA9012
Set of 8 calibrated 2.00" diameter diffuse reflectance standards	99%, 80%, 60%, 40%, 20%, 10%, 5%, 2%	PELA9013

Calibrated Diffuse Color Standard Sets

For establishment of photometric accuracy and linearity in diffuse reflectance mode. Calibration traceable to NIST® and NPL standards. Calibrated 250-2500 nm reported each 50 nm. Disc included with data each 1 nm.

Description	Colors	Part No.
Set of 4 calibrated 5 cm diameter diffuse color standards	Red, green, blue, yellow	PELA9018
Set of 4 calibrated 5 cm diameter diffuse color standards	Orange, purple, cyan, violet	PELA9019
Set of 4 calibrated 2-inch diameter diffuse color standards	Red, green, blue, yellow	PELA9020
Set of 4 calibrated 2-inch diameter diffuse color standards	Orange, purple, cyan, violet	PELA9021

Uncalibrated Diffuse Reflectance Standards

For establishment of photometric accuracy and linearity in diffuse reflectance mode. Calibration traceable to NIST® and NPL standards. Calibrated 250-2500 nm reported each 50 nm. Disc included with data each 1 nm.

Description	Part No.
1-inch 99% standard	L6020318
2-inch 99% standard	L6020319
Adjustable Prop <i>Reflectance sample support 150 mm sphere</i>	L6020329

Cells and Reference Materials

No matter what type of cells your application requires – standard or short path, micro, semi-micro or flow-cells – choosing only high-quality precision cells allows you to make full use of the accuracy and sensitivity of your optical instrument. Our cell's windows are fused to the bodies by a special process which prevents the deformation of the windows. This assures that the full width of the cell is usable and the finished cell dimensions are maintained.

Macro with PTFE Lid

Standard rectangular macro cells are the most frequently-used type of spectroscopy cell for routine liquids analysis. Each cell has a standard inside width of 9.5 mm and a base thickness of 1.5 mm.

Macro Cells with PTFE Lid

Lightpath	Outside Dimensions H x W x D	Volume	Qty.	Part No.
<i>NIR Quartz SUPRASIL® 300</i>				
1 mm*	45 x 12.5 x 3.5 mm	350 µL	2	B0631013
5 mm	45 x 12.5 x 7.5 mm	1.75 mL	2	B0631014
10 mm	45 x 12.5 x 12.5 mm	3.5 mL	2	B0631015
20 mm	45 x 12.5 x 22.5 mm	7.0 mL	2	B0631016
50 mm	45 x 12.5 x 52.5 mm	17.5 mL	1	B0631017
100 mm	45 x 12.5 x 102.5 mm	35.0 mL	1	B0631018
<i>Quartz SUPRASIL</i>				
1 mm*	45 x 12.5 x 3.5 mm	350 µL	2	B0631007
5 mm	45 x 12.5 x 7.5 mm	1.75 mL	2	B0631008
10 mm	45 x 12.5 x 12.5 mm	3.5 mL	2	B0631009
20 mm	45 x 12.5 x 22.5 mm	7.0 mL	2	B0631010
50 mm	45 x 12.5 x 52.5 mm	17.5 mL	1	B0631011
100 mm	45 x 12.5 x 102.5 mm	35.0 mL	1	B0631012
<i>Special Optical Glass</i>				
1 mm*	45 x 12.5 x 3.5 mm	350 µL	2	B0631001
5 mm	45 x 12.5 x 7.5 mm	1.75 mL	2	B0631002
10 mm	45 x 12.5 x 12.5 mm	3.5 mL	2	B0631003
20 mm	45 x 12.5 x 22.5 mm	7.0 mL	2	B0631004
50 mm	45 x 12.5 x 52.5 mm	17.5 mL	1	B0631005
100 mm	45 x 12.5 x 102.5 mm	35.0 mL	1	B0631006

*Note: Glass Lid



Macro Cell with PTFE Lid, Quartz SUPRASIL (B0631007)

Macro Cells with PTFE Stopper

Lightpath	Outside Dimensions H x W x D	Volume	Qty.	Part No.
<i>NIR Quartz SUPRASIL 300</i>				
1 mm	52 x 12.5 x 3.5 mm	350 µL	2	B0631031
5 mm	46 x 12.5 x 7.5 mm	1.75 mL	2	B0631032
10 mm	46 x 12.5 x 12.5 mm	3.5 mL	2	B0631033
20 mm	46 x 12.5 x 22.5 mm	7.0 mL	2	B0631034
50 mm	46 x 12.5 x 52.5 mm	17.5 mL	1	B0631035
100 mm	46 x 12.5 x 102.5 mm	35.0 mL	1	B0631036
<i>Quartz SUPRASIL</i>				
1 mm	52 x 12.5 x 3.5 mm	350 µL	2	B0631025
5 mm	46 x 12.5 x 7.5 mm	1.75 mL	2	B0631026
10 mm	46 x 12.5 x 12.5 mm	3.5 mL	2	B0631027
20 mm	46 x 12.5 x 22.5 mm	7.0 mL	2	B0631028
50 mm	46 x 12.5 x 52.5 mm	17.5 mL	1	B0631029
100 mm	46 x 12.5 x 102.5 mm	35.0 mL	1	B0631030
<i>Special Optical Glass</i>				
1 mm	48 x 12.5 x 3.5 mm	350 µL	2	B0631019
5 mm	46 x 12.5 x 7.5 mm	1.75 mL	2	B0631020
10 mm	46 x 12.5 x 12.5 mm	3.5 mL	2	B0631021



Macro Cell with PTFE Stopper

Semi-micro Cells

Semi-micro cells have the same outside dimension as the Macro cells but the cell walls have been thickened slightly, limiting the interior sample chamber width to 4 mm. Each cell has a base thickness of 3.2 mm and each package contains two cells.

Semi-Micro Cells with PTFE Lid – Black Sides

Lightpath	Outside Dimensions H x W x D	Volume	Part No.
<i>NIR Quartz SUPRASIL 300</i>			
10 mm	45 x 12.5 x 12.5 mm	1.4 mL	B0631051
<i>Quartz SUPRASIL</i>			
10 mm	45 x 12.5 x 12.5 mm	1.4 mL	B0631049
<i>Special Optical Glass</i>			
5 mm	45 x 12.5 x 7.5 mm	700 µL	B0631046
10 mm	45 x 12.5 x 12.5 mm	1.4 mL	B0631047



Semi-Micro Cell with PTFE Lid - Black Sides

Semi-Micro Cells with PTFE Lid – Clear Sides

Lightpath	Outside Dimensions H x W x D	Volume	Part No.
<i>NIR Quartz SUPRASIL 300</i>			
20 mm	45 x 12.5 x 22.5 mm	2.8 mL	B0631045
<i>Quartz SUPRASIL</i>			
20 mm	45 x 12.5 x 22.5 mm	2.8 mL	B0631042
<i>Special Optical Glass</i>			
20 mm	45 x 12.5 x 22.5 mm	2.8 mL	B0631039

Semi-Micro Cells with PTFE Stopper – Black Sides

Lightpath	Outside Dimensions H x W x D	Volume	Part No.
<i>NIR Quartz SUPRASIL 300</i>			
10 mm	46 x 12.5 x 12.5 mm	1.4 mL	B0631066
<i>Quartz SUPRASIL</i>			
10 mm	46 x 12.5 x 12.5 mm	1.4 mL	B0631064

Semi-Micro Cells with PTFE Stopper – Clear Sides

Lightpath	Outside Dimensions H x W x D	Volume	Part No.
<i>NIR Quartz SUPRASIL 300</i>			
20 mm	46 x 12.5 x 22.5 mm	2.8 mL	B0631060
<i>Quartz SUPRASIL</i>			
10 mm	46 x 12.5 x 22.5 mm	2.8 mL	B0631062
20 mm	46 x 12.5 x 22.5 mm	2.8 mL	B0631057



Semi-Micro Cell with PTFE Stopper - Black Sides

Micro Cells

Micro cells have the same outside dimension as the Macro cells but the cell walls have been thickened, limiting the interior sample chamber width to 2 mm. Each cell has a standard light path of 10 mm and each package contains two cells.

Micro Cells with PTFE Lid – Black Sides

Base Thickness	Outside Dimensions H x W x D	Cell Volume	Part No.
<i>Quartz SUPRASIL</i>			
3.2 mm	45 x 12.5 x 12.5 mm	700 μ L	B0631071
<i>Special Optical Glass</i>			
3.2 mm	45 x 12.5 x 12.5 mm	700 μ L	B0631070

Micro Cells with PTFE Stopper – Black Sides

Base Thickness	Outside Dimensions H x W x D	Cell Volume	Part No.
<i>Quartz SUPRASIL</i>			
1.5 mm	40 x 12.5 x 12.5 mm	400 μ L	B0631077
<i>Special Optical Glass</i>			
1.5 mm	40 x 12.5 x 12.5 mm	400 μ L	B0631076

Ultra-Micro Cells

Ultra-micro cells use a narrower sample chamber, raising it directly into the center of the light path and masking it with black quartz. One cell with light path 40 x 12.5 x 12.5 mm.

Ultra-Micro Cell with PTFE Lid

Lightpath	Aperture	Chamber Volume	Part No.
<i>Quartz SUPRASIL</i>			
10 mm	2 x 1.5 mm	30 µL	B0631079

Ultra-Micro Cell with Pipette Tips

Lightpath	Aperture	Chamber Volume	Part No.
<i>Quartz SUPRASIL</i>			
0.1 mm	1 x 5 mm	0.5 µL	B0631082
1 mm	1 x 5 mm	5 µL	B0631083
5 mm	Ø 0.8 mm	2.5 µL	B0631080
10 mm	Ø 0.8 mm	5 µL	B0631081

TrayCell™

The TrayCell is a fiber-optic ultra-micro measuring cell designed for the UV/Vis analysis of DNA/RNA and proteins.

Description	Part No.
UVS TrayCell complete with 0.2 mm and 1.0 mm caps.	L7110289
<i>Complete with blocks to change beam height from 8.5 mm to 15 mm to 20 mm</i>	
2.0 mm TrayCell, (Factor* 5) cap	L7110290
1.0 mm TrayCell, (Factor* 10) cap	L7110291
0.2 mm TrayCell, (Factor* 50) cap	L7110292
2 mm TrayCell, (Factor* 100) cap	L7110293

Caps for TrayCell™

Description	Volume	Part No.
1 mm (Factor* 10)	3 µL – 5 µL	L7110291
0.2 mm (Factor* 50)	0.7 µL – 4 µL	L7110292
2 mm (Factor* 5)	6 µL – 10 µL	L7110290
0.1 mm (Factor* 100)	0.7 µL – 3 µL	L7110293

* Factor = dilution factor compared to a standard cell with a path length of 10 mm



Ultra-Micro Cell with Pipette Tips



TrayCell™

Cylindrical and Flow-Through Cells

Cylindrical Cells – Macro with PTFE Stopper

Cylindrical cells are used with spectrophotometers that have a larger, circular light beam.

Lightpath	Outside Depth	Volume	Remarks	Part No.
<i>NIR Quartz SUPRASIL® 300</i>				
10 mm	12.5 mm	2.8 mL	Neck Ø 6 mm Taper 1:10	B0631099
20 mm	22.5 mm	5.6 mL	Neck NS 7	B0631110
50 mm	52.5 mm	14.0 mL	2 necks NS 7	B0631101
100 mm	102.5 mm	28.0 mL	2 necks NS 7	B0631102
<i>Quartz SUPRASIL</i>				
10 mm	12.5 mm	2.8 mL	Neck Ø 6 mm Taper 1:10	B0631095
20 mm	22.5 mm	5.6 mL	Neck NS 7	B0631096
50 mm	52.5 mm	14.0 mL	2 necks NS 7	B0631097
100 mm	102.5 mm	28.0 mL	2 necks NS 7	B0631098
<i>Special Optical Glass</i>				
10 mm	12.5 mm	2.8 mL	Neck Ø 6 mm Taper 1:10	B0631091
20 mm	22.5 mm	5.6 mL	Neck NS 7	B0631092
50 mm	52.5 mm	14.0 mL	2 necks NS 7	B0631093
100 mm	102.5 mm	28.0 mL	2 necks NS 7	B0631094



NIR Quartz SUPRASIL Cylindrical Cells Macro with PTFE Stopper, 10 mm Part No. B0631099

Flow-through Cells

Flow-through cells are used for measuring samples with continuous flow or with Sippers where individual samples are aspirated into the cell.

Lightpath	Outside Depth	Height	Aperture	Volume	Part No.
<i>Quartz SUPRASIL</i>					
1 mm	35 x 12.5 x 12.5 mm	15 mm	17.5 x 3.5 mm	62 µL	B0631085
10 mm	35 x 12.5 x 12.5 mm	15 mm	11 x 3.5 mm	390 µL	B0631084
10 mm	35 x 12.5 x 12.5 mm	15 mm	8 x 2 mm	160 µL	B0631087
10 mm	35 x 12.5 x 12.5 mm	15 mm	11 x 2.5 mm	300 µL	B0631150
10 mm	35 x 12.5 x 12.5 mm	15 mm	Ø 3 mm	80 µL	B0631089
50 mm	45 x 12.5 x 52.5 mm	15 mm	Ø 3 mm	370 µL	B0631088
10 mm	35 x 12.5 x 12.5 mm	15 mm	Ø 2 mm	30 µL	B0631090
<i>Quartz SUPRASIL (FIAS)</i>					
10 mm	35 x 12.5 x 12.5 mm	15 mm	Ø 1.5 mm	18 µL	B0631151
10 mm	35 x 12.5 x 12.5 mm	15 mm	Ø 1 mm	8 µL	B0631152

Replacement Tubing

Description	Part No.
FEP-Replacement Tubing with one short screw fitting, 500 mm long	B0631130
FEP-Replacement Tubing with one long screw fitting, 500 mm long	B0631131
Sipper Tubing to Cuvette (in)	B2500129
Sipper Tubing to Cuvette (out)	B2500127

Lids and Stoppers

Description	Lightpath	Part No.
PTFE Fitted Lid	5 mm	B0631145
PTFE Fitted Lid	10 mm	B0631129
PTFE Stopper with NS 7 Fitting		B0631128
PTFE Stopper with Fitting Ø 6, taper 1:10		B0631149

Disposable Cells

Disposable cells greatly reduce the risk of contamination, remove the need for cleaning reagents and lower laboratory costs as compared to quartz or glass cells.

Macro Cells

Standard rectangular macro cells are the most frequently-used type of spectroscopy cell for routine liquids analysis. Each cell has a standard inside width of 9.5 mm and a base thickness of 1.5 mm.

Macro Cells

Description	Outside Dimensions	Cell Volume	Qty.	Part No.
UV Material	45 x 12.5 x 12.5 mm	2.5 – 4.5 mL	100	L7110269
Polystyrene	45 x 12.5 x 12.5 mm	2.5 – 4.5 mL	1,000	L7110271
Polymethyl Methacrylate	45 x 12.5 x 12.5 mm	2.5 – 4.5 mL	1,000	L7110273



Macro Cells

Micro Cells

Description	Outside Dimensions	Cell Volume	Qty.	Part No.
UV Material	45 x 12.5 x 12.5 mm	70 - 550 µL	100	L7110260
UV Material	45 x 12.5 x 12.5 mm	70 - 550 µL	500	L7110261
UV Material	45 x 12.5 x 52.5 mm	17.5 mL	1	B0631011
Individually Wrapped *	45 x 12.5 x 12.5 mm	70 - 550 µL	100	L7110262
Caps - Blue			100	L7110264
Caps - Green			100	L7110266
Caps - Orange			100	L7110267

*Free of DNase, DNA and RNase



Micro Cells

Semi-micro Cells

Description	Outside Dimensions	Cell Volume	Qty.	Part No.
UV Material	45 x 12.5 x 12.5 mm	1.5 – 3.0 mL	100	L7110268
Polystyrene	45 x 12.5 x 12.5 mm	1.5 – 3.0 mL	1,000	L7110272
Polymethyl Methacrylate	45 x 12.5 x 12.5 mm	1.5 – 3.0 mL	1,000	L7110274



Semi-micro Cells

Cell Rack

Also available is a cell rack for easy storage of samples. It is suitable for standard 10 mm light path cells and holds up to 16 cells in numbered positions to aid sample tracking. The cell rack can withstand temperatures up to 121 °C so it can be used in an Autoclave.

Description	Qty.	Part No.
Cell Rack, 16 cell capacity	1	L7110275

ACCESSORIES

Cell Holders

To extend the range of samples that you can analyze, we offer a wide range of sample holders. The rectangular and cylindrical long-path cell holders are ideal for sensitive measurements on dilute samples where the extra pathlength is important.

Single Cell Holders

Solid Sample Holder

Minimum sample size 10 x 15 mm. Maximum sample thickness 5 mm.

Description	Part No.
Solid Sampler Holder	B0080822

Test Tube Holder

This holder accommodates test tubes from 11 to 17 mm diameter.

Description	Part No.
Test Tube Holder	B0500952

Variable Angle Sample Holder

0° to 60° for sample position for measurement in transmission of filter glasses and other transparent samples. Minimum sample size is 30 x 40 mm.

Description	Part No.
Variable Angle Sample Holder	B0152471

Rectangular Long-Path Cell Holder

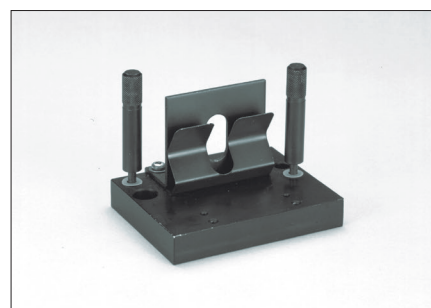
The Rectangular Long-path Cell Holder accepts cells with pathlengths from 10 to 100 mm.

Description	Part No.
Test Tube Holder	B0500952

Single Cell Holders

The Rectangular Long-path Cell Holder accepts cells with pathlengths from 10 to 100 mm.

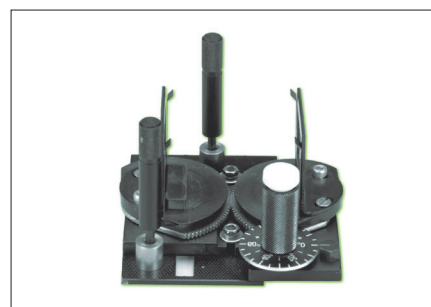
Description	Part No.
Cylindrical long path cell holder	B0082539
Single cell holder, water thermostatted.	B0080819
High Accuracy Variable Angle Solid Sample Holder	L6022039



Solid Sample Holder



Test Tube Holder



Variable Angle Sample Holder

Cell Changers and Thermoelectric Accessories

Description	Part No.
Long Pathlength 5 Cell Holder	B0089439
8 Cell Holder, Water Thermostattable	B2205411
Linear Cell Programmer	L6020360
<i>Requires set of cell holders of choice: 2 x B0089439 Long Pathlength 5 Cell Holder, 2 x B0128095 6 Cell Holder, water thermostattable, or 2 x B2205411 8 Cell Holder, water thermostattable.</i>	

Sampling Modules

The Fully-automated Universal Reflectance Accessory (URA)

PerkinElmer's unique Universal Reflectance Accessory (URA) is fully-automated, multi-angle, absolute specular reflectance accessory. For the Lambda 650/850/950/1050 series only.

Features and Benefits

- Measurement range: 190 – 3,100 nm (UV/Vis/NIR), 190 – 900 nm (UV/Vis)
- Angular range: 8° – 68° incident angle
- Depolarization recommended for angles >15°
- Measure separate S&P polarizations using the Double Depolarizer Drive (B0505530)
- Absolute and relative measurements can be made
- Typical applications include the measurement of anti-reflection coatings, high-reflectors, coating thickness and metallic reflectors

Description	Part No.
URA* (UV/Vis only)	L6020208
URA* (UV/Vis/NIR)	L6020202
URA (UV/Vis/NIR) for LAMBDA 1050 & 1050+ models	L6020358

*Not available for the LAMBDA 750

Snap-in Integrating Spheres

PerkinElmer's range of snap-in integrating spheres is the industry standard for the measurement of total reflectance, diffuse reflectance and diffuse transmittance measurements for a huge range of sample types.

Features and Benefits

- Measurement range: 200 – 2,500 nm (UV/Vis/NIR), 200 – 900 nm (UV/Vis)
- InGaAs versions offer higher sensitivity in the near-IR range
- Sampling modes include total and diffuse reflectance at an incident angle of 8°, and total and diffuse transmittance at normal (0°) incidence

Description	Part No.
100 mm InGaAs Detector Integrating Sphere	L6020371
100 mm PbS Detector Integrating Sphere	L6020372
150 mm PbS Module Integrating Sphere*	L6020365
150 mm InGaAs Module Integrating Sphere*	L6020364

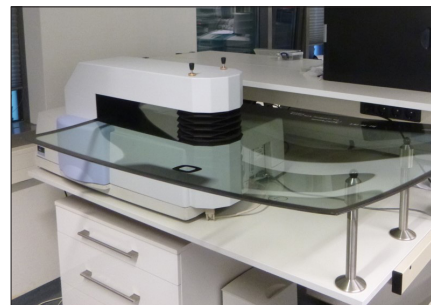
*Not available for the LAMBDA 750

100 mm Sphere Accessories

Description	Part No.
Transmission-only Small Spot Kit	L6022023
Reflectance-only Small Spot Kit	L6022024
Powder Cell Holder	L6022025
Cuvette Cell Holder	L6022022

Specialized Accessories

Description	Part No.
Absolute Directional VW Specular Reflectance Accessory for L650/750/850/950/1050	L6310205
Directional Relative Reflectance/Transmission Accessory	L6310201
Double Aperture Accessory	L6310202
Directional IV Accessory	L6310206
Directional Small Spot IV Accessory	L6310208
Praying Mantis accessory, (Harrick) for Diffuse Reflectance measurements of small samples	L6310211
Praying Mantis Temperature controller, (Harrick) (110 V)	L6310212
Praying Mantis Temperature controller, (Harrick) (220 V)	L6310213
Praying Mantis Temperature controller, (Harrick) (240 V)	L6310214
Praying Mantis High Temperature Reaction Chamber (Harrick) UV/VIS	L6310215
Praying Mantis Low Temperature Reaction Temp. Chamber (Harrick) UV/VIS	L6310216
UL 270 Large Diffuse Measurement System for use with the LAMBDA 950/1050	L6310220
Automated Reflectance and Transmission measurement system (ARTA)	L6020116
Angular Scattering Option for the Automated Reflectance and Transmission measurement system (ARTA)	L6020117
Sample Tilt Option for the Automated Reflectance and Transmission measurement system (ARTA)	L6020118
TAMS Measurement System (System includes L6310240 and L6310246)	L6310241
TAMS without Detector	L6310240
TAMS standard detector set (Si/PbS)	L6310246
TAMS Sphere Detector Upgrade Si/InGaAs	L6310242
TAMS Sphere Detector Upgrade Si/PbS	L6310243
TAMS SPHERE set (Large enhanced Si only)	L6310244
TAMS detector set (lrg enhanced Si only)	L6310247
TAMS Wafer Sampler Holder for 200 mm wafer	L6310249
TAMS Laser Alignment Tool	L6310245
Large Sample Reflectance / Transmittance Accessory (LSRT)	L6310248
InGaAs Downward viewing integrating sphere, 150 mm for LAMBDA 650/850/950/1050 spectrometer	L6020370



Large Sample Reflectance/Transmittance Accessory (LSRT)



TAMS Measurement System

Diffuse Reflectance Accessories

Description	Part No.
Biconical accessory small spot size	PELA1022
Variable angle transmittance sample holder of nonscattering samples	PELA9042
Variable Angle Transmittance Sample Holder - Sample Compartment (VATH, SAMPLE COMP MOUNT)	L6022039
Center mounted sample holder, Clip style	PELA9039
Small spot accessory kit for 150 mm integrating sphere	L6020211
Center mounted sample holder, Jaw style	PELA9038
Powder Press Set	PELA9040
Center mounted cuvette holder for 150 mm Integrating Sphere	PELA9041
Cuvette Holder for Transmittance Position for 150 mm Integrating Sphere	C6951019
Reflectance only Small Spot Kit	L6020313
Reflectance Aperture Kit	L6020314
Sample Compartment Iris Assembly	L6020316
Adjustable Sample support wedge	L6020329
Light Trap, Reflectance port 150 mm Sphere	PELA9026
Powder Holder for 100 mm Integrating Sphere	L6022025
Transmittance-only Small Spot Kit for the 100 mm Integrating Sphere	L6022023
Reflectance-only Small Spot Kit for the 100 mm Integrating Sphere	L6022024

Specular Reflectance Accessories

Description	Part No.
VN absolute specular reflectance accessories for the LAMBDA High Performance systems spectrometer angle of incidence near normal	N1016008
VN absolute specular reflectance accessories for the LAMBDA High Performance systems spectrometer angle of incidence 15°	N1016015
VN absolute specular reflectance accessories for the LAMBDA High Performance systems spectrometer angle of incidence 30°	N1016030
VN absolute specular reflectance accessories for the LAMBDA High Performance systems spectrometer angle of incidence 45°	N1016045
VN absolute specular reflectance accessories for the LAMBDA High Performance systems spectrometer angle of incidence 60°	N1016060
Base plate for VN absolute specular reflectance accessories for the LAMBDA High Performance systems	N1016001
Absolute specular reflectance accessory for the LAMBDA High Performance systems spectrometer	PELA1029
Variable angle reflectance accessory (recommended for QA only)	B0137314
Near Normal Angle Specular Reflective Accessory	B0086703
Relative specular reflectance accessory 45 degrees	PELA1025
"Grazing Angle" relative reflectance accessory	PELA1026
Sample Compartment Iris Assembly	L6020316
Adjustable Sample support wedge	L6020329
Light Trap, Reflectance port 150 mm Sphere	PELA9026
Powder Holder for 100 mm Integrating Sphere	L6022025
Transmittance-only Small Spot Kit for the 100 mm Integrating Sphere	L6022023
Reflectance-only Small Spot Kit for the 100 mm Integrating Sphere	L6022024

Polarizers / Depolarizers

Description	Part No.
Common beam depolarizer for LAMBDA High Performance spectrometer	B0501282
Double polarizer drive for LAMBDA High Performance spectrometer	B0505530
UV/VIS/NIR Polarizer crystal for LAMBDA High Performance double polarizer drive	B0505284
UV/VIS Polarizer crystal for LAMBDA High Performance double polarizer drive	N1010520
Film polarizer for LAMBDA High Performance double polarizer drive	B2205022
Depolarizer crystal for LAMBDA High Performance double polarizer cassette	B2205021



Double Polarizer Drive

General Purpose Optical Bench / Accessories

Description	Part No.
PbS General Purpose Optical Bench (GPOB) *	PELA1003
InGaAs General Purpose Optical Bench (GPOB)*	L6020328
Sample holders mount kit	PELA1005
Variable angle transmittance sample holder kit	PELA1006
Lens assembly kit	PELA1007
Optical bench kit	PELA1008
Fiber optic reference feed kit	PELA1009
Light trap aperture kit	PELA1010
Specular reflectance kit	PELA1011
Flat mirror kit	PELA1012
Short focal length mirror kit, spot incidence	PELA1013
Fiber optic measurement stage and holder	PELA1015

*Not available for the LAMBDA 750

Fiber Optics Accessories

Description	Part No.
Transfer-optic for mono-fibers	L6020290
Fiber Optic Dip Probe, 200 – 1100 nm, 15 mm 316SS probe	N1016070
Light shield	N1016074
Probe Tip, 2 mm pathlength	N1016073
Probe Tip, 5 mm pathlength	N1016072
Probe Tip, 10 mm pathlength	N1016071
Pair of mono-fibers	B0196912

Sippers

Description	Part No.
Peristaltic Sipper "PESI"	B2190036
Sipper installation kit	L6020291
Tubing for Peristaltic Pump (purple/purple)	B0190034
Tubing kit "Peristaltic"	B2500103

Autosampler System & Supplies

Autosampler

Description	Part No.
S10 Autosampler	N2020004
Sample Vessels 6 mL, Package of 500	B0193235
Sample Vessel, 8 mL, Package of 1000	B0508901
Sample Vessels 15 mL, Package of 500	B0193233
Sample Vessels 50 mL, Package of 500	B0193234

Flowcell for Autosampler Systems

Description	Part No.
Flow-Through Cell, QS, 10 mm, with 2 screw connectors	B0631087

Sample Trays

Order No.	B3140619	B3140618	B3140621	B3001647
<i>Sample locations</i>	90	60	21	9/29
<i>Location diameter (mm)</i>	13	16	30	30/16
<i>Sample vessel (mL)</i>	6 or 8	15	50	50/15

Rack Configurations

Tray Type	Sample/Standard Locations	Required Sub Trays
Tray E	180 / 20	1 tray of B314 0621 and 2 trays of B314 0619
Tray F*	149 / 8	1 tray of B300 1647 and 2 trays of B314 0618
Tray G	54 / 8	3 trays of B314 0621

TRUST THE CONSUMABLES
ENGINEERED
FOR YOUR INSTRUMENTS

PerkinElmer, Inc.
940 Winter Street
Waltham, MA 02451 USA
P: (800) 762-4000 or
(+1) 203-925-4602
www.perkinelmer.com



For a complete listing of our global offices, visit www.perkinelmer.com/ContactUs

Copyright © 2019, PerkinElmer, Inc. All rights reserved. PerkinElmer® is a registered trademark of PerkinElmer, Inc. All other trademarks are the property of their respective owners.