

LANC Fibre Patch Panel Solution

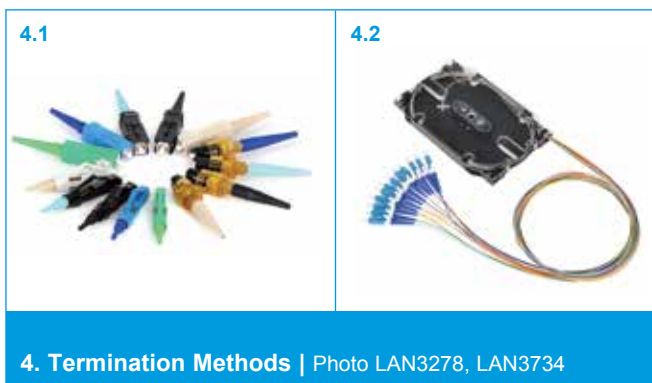
A LANscape®
Solutions Product

features and benefits |

Modular front with interchangeable fibre optic adapter modules	Exact fibre count can be freely configured, MM & SM fibres and different connector types can be mixed in one housing
Quick mount feature (teardrop design)	Allows quick and accurate mounting of housing
Port numbers printed above and below adapter modules	Port numbers are visible at all rack or cabinet mounting locations
High-density using LC connectivity	Occupies only one rack unit for 24 LC-Duplex ports
Splice capacity of up to 48 fibres	Segmentation of fusion splices into four splice trays with 12 fibres each
Accommodates different termination methods	Pigtail splicing or field connectorisation in the same housing
Dual entry cable mounting	Cable can enter from either left or right side
Fibre routing guides and rack screws included	Includes accessories needed for proper installation
Low installation depth	Mountable in shallow cabinets or racks
Easy to remove cover	Easy access to fibre routing area
Available in black & grey	Colour can be chosen for aesthetic reasons

Corning Cable Systems LANC product family provides a cost effective, economical alternative fulfilling the basic requirements of a cabling solution for Enterprise LAN applications. The LANscape LANC fibre patch panels provide up to 48 fibre (24 port) capacity for LC and 24 fibre capacity for SC and ST connectivity.

The LANC housings are available in two colours and can be configured for the exact fibre count utilizing different connector types for various applications.



PRETERMINATED SYSTEMS | COPPER CABLES | COPPER CONNECTORS | CABLE ASSEMBLIES | HARDWARE | SPlice CLOSURES | FIBRE CABLES | FIBRE CONNECTORS | TRAINING |

LANC Fibre Patch Panel Solution

A LANscape®
Solutions Product



1. LANC Housings

The LANC housings hold up to 4 splice packs with a total fibre capacity of up to 48 with LC connectors in 1U of rack space. The fixed housing can be equipped with mixed fibre and connector styles and is suitable for different termination methods. It has two dual cable entries on the back and an easy to remove cover.

specifications |

Product	Dimensions (H x W x D) mm	Product Weight kg
Single piece, empty	42 x 480 x 220	2.0
Packaging		
Single piece, empty (packed)	60 x 555 x 355	2.3

ordering information |

Part Number	Description	Delivery Qty.	Picture
LANC-01U-B	1U LANC Fixed Fibre Housing, black, with top access for up to 24 single size or 12 double sized LANscape fibre adapter modules, RAL 9005	1 piece	
LANC-01U-G	1U LANC Fixed Fibre Housing, grey, with top access for up to 24 single size or 12 double sized LANscape fibre adapter modules, RAL 7035	1 piece	

LANC Fibre Patch Panel Solution

A LANscape®
Solutions Product

2. Accessories

Part Number	Description	Delivery Qty.	Picture
LANS-M20	Cable Glands M20 for cables with a diameter of 8-13mm	Pack of 10	
LANS-M25	Cable Glands M25 for cables with a diameter of 11-16mm	Pack of 10	
LANS-LBL-WNDW	Self-adh. Labeling Windows, incl. paper strips	Pack of 10	
WAXWSW-00008-C009	1U Patch Cable Guides (left & right), black	Pack of 2	
WAXWSW-00000-C009	1U Patch Cable Guides (left & right), silver	Pack of 2	
WAXWSM-00108-C001	Black blanks to fill unused front openings (1x LANscape each)	Pack of 6	
WAXWSM-00101-C001	White blanks to fill unused front openings (1x LANscape each)	Pack of 6	
LANS-PATCH-RTR-B	1U Fibre Patch Cord Management Panel, black	1 piece	
LANS-PATCH-RTR-G	1U Fibre Patch Cord Management Panel, grey	1 piece	
LANS-PATCH-RTR-S	1U Fibre Patch Cord Management Panel, silver	1 piece	
CLEANER-PORT-LC	Single Fibre Port Cleaner LC (1.25mm ferrules)	1 piece	
CLEANER-PORT-2.5	Single Fibre Port Cleaner SC/ST® Compatible (2.5mm ferrules)	1 piece	

PRETERMINATED SYSTEMS | COPPER CABLES | COPPER CONNECTORS | CABLE ASSEMBLIES | HARDWARE | SPLICE CLOSURES | FIBRE CABLES | FIBRE CONNECTORS | TRAINING

LANC Fibre Patch Panel Solution

A LANscape®
Solutions Product

3. LANC Adapter Modules

- Based on LANscape footprint, easily snap into the modular front of LANC/LANS housings
- All LANC fibre adapter modules provided with metal sleeves
- For ceramic sleeves or shuttered LC adapters please refer to LANS fibre adapter modules

ordering information |

Part Number	Description	Delivery Qty.	Picture
LANC-MOD-A7-B	LC Duplex MM/OM1 metal sleeve, black socket (1x LANscape)	1 piece	
LANC-MOD-D2-B	LC Duplex MM/OM2 metal sleeve, black socket (1x LANscape)	1 piece	
LANC-MOD-H7-B	LC Duplex MM/OM3+4 metal sleeve, black socket (1x LANscape)	1 piece	
LANC-MOD-L4-B	LC Duplex SM /OS2 metal sleeve, black socket (1x LANscape)	1 piece	
LANC-MOD-P8-B	SC Duplex MM/OM1 metal sleeve, black socket (2x LANscape)	1 piece	
LANC-MOD-P5-B	SC Duplex MM/OM2 metal sleeve, black socket (2x LANscape)	1 piece	
LANC-MOD-E8-B	SC Duplex MM/OM3+4 metal sleeve, black socket (2x LANscape)	1 piece	
LANC-MOD-D8-B	SC Duplex SM/OS2 metal sleeve, black socket (2x LANscape)	1 piece	
LANC-MOD-74-B	ST Simplex MM metal sleeve, black socket (1x LANscape)	1 piece	
LANC-MOD-16-B	ST Simplex SM/OS2 metal sleeve, black socket (1x LANscape)	1 piece	
LANC-MOD-A7-W	LC Duplex MM/OM1 metal sleeve, white socket (1x LANscape)	1 piece	
LANC-MOD-D2-W	LC Duplex MM/OM2 metal sleeve, white socket (1x LANscape)	1 piece	
LANC-MOD-H7-W	LC Duplex MM/OM3+4 metal sleeve, white socket (1x LANscape)	1 piece	
LANC-MOD-L4-W	LC Duplex SM/OS2 metal sleeve, white socket (1x LANscape)	1 piece	
LANC-MOD-P8-W	SC Duplex MM/OM1 metal sleeve, white socket (2x LANscape)	1 piece	
LANC-MOD-P5-W	SC Duplex MM/OM2 metal sleeve, white socket (2x LANscape)	1 piece	
LANC-MOD-E8-W	SC Duplex MM/OM3+4 metal sleeve, white socket (2x LANscape)	1 piece	
LANC-MOD-D8-W	SC Duplex SM/OS2 metal sleeve, white socket (2x LANscape)	1 piece	
LANC-MOD-74-W	ST Simplex MM metal sleeve, white socket (1x LANscape)	1 piece	
LANC-MOD-16-W	ST Simplex SM/OS2 metal sleeve, white socket (1x LANscape)	1 piece	

4. Termination Methods

4.1 UniCam®

UniCam Connectors are the ideal solution for all your field-installable fibre optic connector requirements. The quick installation process reduces installation time, making the UniCam Connector cost effective for all fibre applications. For more information, please visit our website: <http://www.corning.com/unicam>

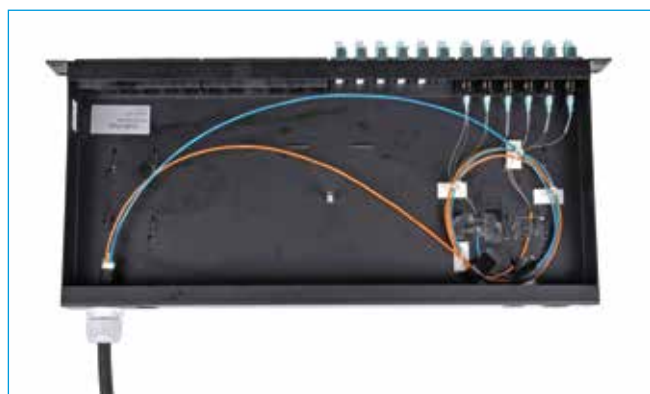
sample list of materials |

LANC Housing with UniCam Termination - Link of 12 Fibres OM2 (Multimode)

Part Number	Description	Quantity
LANC-01U-B	1U LANC Fixed Fibre Housing, black	2 pieces
LANC-MOD-P5-B	SC Duplex MM/OM2 LANscape Adapter Module, black	12 pieces
WAXWSM-00108-C001	Black LANscape Blanks (pack of 6)	4 pieces
012TSZ-T2B31D20	FREEDM™ Dry MPC Cable 12x MM/OM2 CC	150 metres
FAN-BT-3CM-25	Adapter Tubes 250 to 900µm (pack of 25)	1 piece
95-050-40	SC MM/OM2 Std. Perf. UniCam Connector	24 pieces
Tool kit needed:		
TKT-UNICAM-PFC	High-Performance UniCam Tool Kit	1 piece

This method can only be used with a fixed patch panel without sliding trays, such as the LANC. Installers need to be cautious and take extra care routing and installing the connectors on the 250µm fibre. There will be reduced tensile strength in connectors and bare fibres in the patch panels.

- Clean the fibres and wipe with alcohol.
- Place a piece of 3cm 900µm tubing onto the fibre, such as FAN-BT-3CM.
- Install the UniCam Connector, but before crimping, slide the 3cm tubing back into the connector.



LANC Panel with UniCam Termination | Photo LAN4183

4. Termination Methods continued

4.2 Splice Packs

- Splice packs delivered with 12 Pigtailed 900µm TB (Easy Strip), fibres pre-stripped to 250µm
- Fibres are Telcordia colour-coded on both 900µm and 250µm layers
- Pigtailed are 2m long, 0.8m 900µm and 1.2m 250µm
- Splice packs are delivered with transparent cover and both heat-shrink and crimp splice organizer
- Each splice pack holds 12 fusion splices (max. 4 splice packs per 1U LANC/LANS housing)



specifications |

Product	Dimensions (H x W x D) mm	Product Weight kg
Single piece, empty	10 x 140 x 90	0.1
Packaging		
Single piece, empty (packed)	40 x 275 x 130	0.2

LANC Fibre Patch Panel Solution

A LANscape®
Solutions Product

ordering information |

Part Number	Description	Delivery Qty.
SP12-03K-S8	LC MM/OM1 Universal Splice Pack (heat-shrink/crimp) incl. 12 pigt. & cover	1 piece
SP12-03B-S8	LC MM/OM2 Universal Splice Pack (heat-shrink/crimp) incl. 12 pigt. & cover	1 piece
SP12-03T-S8	LC MM/OM3 Universal Splice Pack (heat-shrink/crimp) incl. 12 pigt. & cover	1 piece
SP12-03Q-S8	LC MM/OM4 Universal Splice Pack (heat-shrink/crimp) incl. 12 pigt. & cover	1 piece
SP12-02R-S8	LC SM/OS2 Universal Splice Pack (heat-shrink/crimp) incl. 12 pigt. & cover	1 piece
SP12-39K-S8	SC MM/OM1 Universal Splice Pack (heat-shrink/crimp) incl. 12 pigt. & cover	1 piece
SP12-39B-S8	SC MM/OM2 Universal Splice Pack (heat-shrink/crimp) incl. 12 pigt. & cover	1 piece
SP12-39T-S8	SC MM/OM3 Universal Splice Pack (heat-shrink/crimp) incl. 12 pigt. & cover	1 piece
SP12-58R-S8	SC SM/OS2 Universal Splice Pack (heat-shrink/crimp) incl. 12 pigt. & cover	1 piece
SP12-50K-S8	ST MM/OM1 Universal Splice Pack (heat-shrink/crimp) incl. 12 pigt. & cover	1 piece
SP12-50B-S8	ST MM/OM2 Universal Splice Pack (heat-shrink/crimp) incl. 12 pigt. & cover	1 piece
SP12-50T-S8	ST MM/OM3 Universal Splice Pack (heat-shrink/crimp) incl. 12 pigt. & cover	1 piece
SP12-61R-S8	ST SM/OS2 Universal Splice Pack (heat-shrink/crimp) incl. 12 pigt. & cover	1 piece

PRETERMINATED SYSTEMS | COPPER CABLES | COPPER CONNECTORS | CABLE ASSEMBLIES | HARDWARE | SPLICE CLOSURES | FIBRE CABLES | FIBRE CONNECTORS | TRAINING |

LANC Fibre Patch Panel Solution

A LANscape®
Solutions Product

notes |

Corning Cable Systems GmbH & Co. KG • Leipziger Strasse 121 • 10117 Berlin, GERMANY
00 800 2676 4641 • FAX: +49 30 5303 2335 • www.corning.com/cablesystems

Corning Cable Systems reserves the right to improve, enhance and modify the features and specifications of Corning Cable Systems products without prior notification. LANscape is a registered trademark of Corning Cable Systems Brands, Inc. ClearCurve is a registered trademark of Corning Incorporated. All other trademarks are the properties of their respective owners. Corning Cable Systems is ISO 9001 certified. © 2012 Corning Cable Systems. All rights reserved. Published in the EU. LAN-1511-A4-BEN / May 2013