

LARGE ABSOLUTE AUCTION

COMPLETE LIQUIDATION

THURSDAY,
OCTOBER 14, 2010
9:00 A.M. EDT

AFTER 52
SUCCESSFUL
YEARS!



WASTLER CONSTRUCTION

Frederick, Maryland



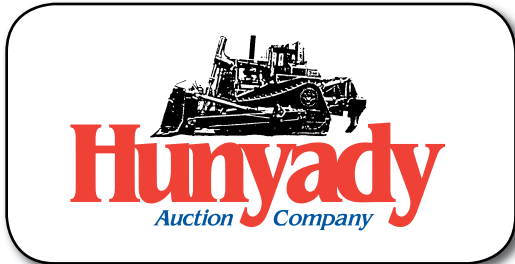
(3) OF (12) EXCAVATORS



'06 CAT PM102 (890 ORIGINAL HOURS)



(3) OF (9) TRI-AXLE DUMPS



1440 COWPATH RD. • HATFIELD, PA 19440
215/361-9099 • Fax: 215/361-9212

PRE-SORTED
FIRST CLASS MAIL
US POSTAGE
PAID
HAVERTOWN, PA
PERMIT #45





NOTICE: The principals of Wastler Construction, a well respected Maryland contractor, have decided to close operations in order to pursue other interests. For over 52 years, Wastler has enjoyed an outstanding reputation and success in the underground utility, asphalt paving and road building, earth moving, site development and trucking industries. All equipment is owned by Wastler and will sell to the highest bidder without minimums, reserves or buyers premiums. Please plan to attend this single-seller, absolute auction of well maintained, late equipment and trucks!

Hospitality Reception: Please join Wastler Construction and Hunyady Auction Company for BBQ and refreshments on Wednesday, October 13th from 4:00pm to 6:30pm, at the sale site.

Location: The auction will be held at Wastler's shop and office facility located at 8005 Reichs Ford Road, Frederick, MD 21704

Terms: Payment in full is required on sale day by cash, certified funds, or check with a bank letter of guarantee. Sample letter of guarantee: "We hereby guarantee the payment of our customer _____ written on his account up to _____ dollars for purchases at your auction sale on October 14, 2010." All guaranteed checks should be made payable to Hunyady Auction Co.

Sales Tax: Sales tax will be collected at a rate of 6% on all items, with the exception of motor vehicles. Sales tax on motor vehicles will be due when the vehicle is registered. The state of Maryland will only accept resale and exemption certificates issued by the state of Maryland. Out-of-state purchasers can either apply for a Maryland resale/exemption number prior to the sale or apply for a sales tax refund from the state of Maryland with proof of intended resale.

Financing: Financing is available on select items, please contact Susan (215) 361-9099 at the auction company for details.

Inspection: Items will be available for inspection beginning one week prior to the auction from 8:00AM to 4:00PM. The site will be closed Sunday October 10.

Removal: After complete payment, all sale items may be removed on sale day as long as the removal activity is not disruptive to the sale and only until 5:00 p.m. Items may also be removed Friday, October 15 and Monday thru Thursday, October 18th-21st, from 8:00 a.m. to 5:00 p.m. All items must be removed no later than Thursday, October 21st at 5:00 p.m.

Sale Site Directions: TRAVELING INTERSTATE 70 EASTBOUND: Exit #55 (South Street/Fairgrounds) At bottom of exit ramp turn left onto Reichs Ford Road. Continue (0.5) miles to sale site on right.

TRAVELING INTERSTATE 70 WESTBOUND: Exit #55 At bottom of ramp turn left. Proceed to stop sign and turn left onto Reichs Ford Road and follow (0.6) miles to sale site on right.

Airport Information: The area is serviced commercially through several airports to include: Baltimore Washington International (BWI) (Approximately 50 Miles From Sale Site) • Washington Dulles (IAD) (Approximately 45 Miles From Sale Site) • Harrisburg International (MDT) (Approximately 85 Miles From Sale Site); The area is serviced privately through Frederick Municipal Airport (FDK) FBO: (301) 662-8156

Motel Information: Numerous Hotels Located At Exit #54 of Interstate 70 To Include: Comfort Inn Red Horse (Auction Headquarters) (301) 662-0281; 998 West Patrick Street, Frederick, MD 21703 • Additional Area Hotels: Hampton Inn Frederick (301) 698-2500; 5311 Buckeystown Pike, Frederick, MD 21704 • Holiday Inn Frederick (301) 694-7500; 5400 Holiday Drive, Frederick, MD 21703

SALE SITE PHONE: (301) 663-0640 SALE SITE FAX: (888) 859-8958

TRENCH BOXES, GRAVEL BOXES, AND ROAD PLATE

8'x24'x6" Trench Box • 8'x24'x6" Trench Box, s/n M05030678 • 10' Manhole Box, with 24" return
• (2) Gravel Boxes; ROAD PLATE: (2) 8x12x1"; (2) 8x10x1"; (2) 6x8x1"

SNOW EQUIPMENT

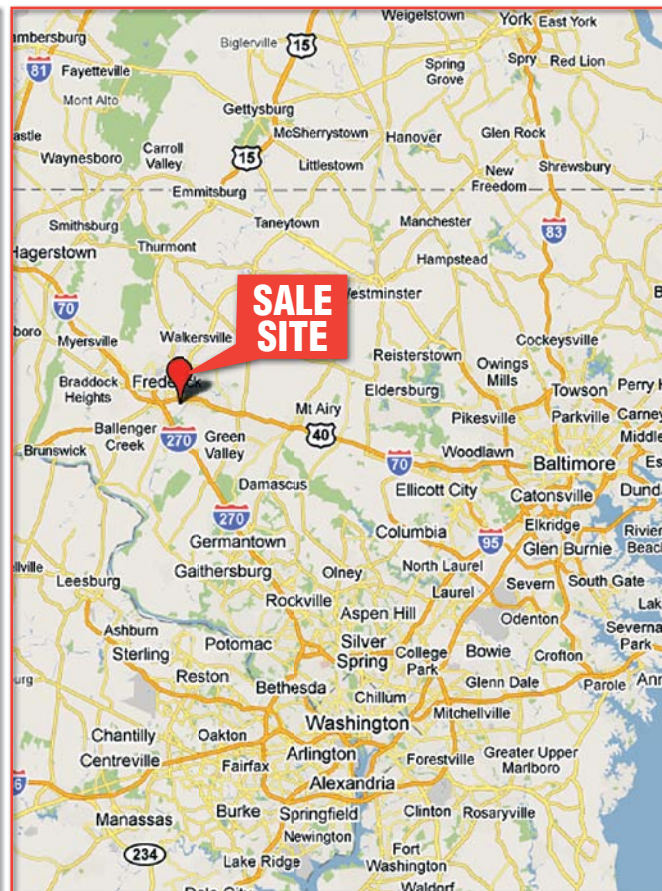
BUYERS Salt Dogg Stainless 8' gas Powered Spreader • 8' Steel gas Powered Spreader • Hydraulic Stainless Tailgate Spreader • Hydraulic Steel Tailgate Spreader • V-Plow • (2) 10' Plow Blades and Frames, manual angle • (2) Hitch Mount Salt Spreaders • (8) Snowplow Blades and Frames (For Various Light Duty Trucks)

CONTRACTORS TOOLS AND SURVEY EQUIPMENT

MQ EC-92 Portable Mortar Mixer, Honda 8HP • (2) Portable Arrowboards, diesel • **STOW** CS1065 Concrete Saw, Wisconsin gas • (5) **MIKASA** and **BOMAG** Foot Compactors • (2) **WACKER** WP1550 Plate Compactors • **STIHL** Demo Saws • **LINCOLN** Shield Arc SA200 Gas Powered Welder • (2) **HONDA** EG2500X Generators • **WACKER** PD3A Diaphragm Pump • **HONDA** 3" Portable Trash Pump (parts) • (2) 2" Electric Submersible Pump • 3" Suction and Discharge Hose • Approximately 20 Gallon Walk Behind Propane Fired Crack Filler • **SPECTRA PHYSICS** DG511 Pipe Laser • **APACHE** Arrow 2 Pipe Laser • (2) **BERGER** Auto Levels • **SOKKIA** 300 Level • (2) **EAST COAST INSTRUMENTS** EC124 Level • (2) Gas Powered Man-hole Blowers • Shop Made Pneumatic Manhole Test Cap • Pipe Test Plugs • Small Quantity Assorted Valves and Fittings • **HILTI** TE22 Electric Hammer Drill • **SIMPLICITY** Sno-Away 5 22" Walk Behind Snow Blower, Tecumseh 5HP gas • **MURRAY** 22" Walk Behind Mower, 6.5HP gas • (3) Walk Behind Spreaders • **LOAD RELEASE** 4' Road Magnet • 5'5" Spreader Beam • Belt Splicing Kit • 4'x6' Pickup Explosives Box • **UNUSED** 2008 FORD 8' Pickup Bed • (4) Pickup Tail Gates • (2) 24' Aluminum Extension Ladders • Gabion Baskets • Assorted Metal and Cloth Road Signs and Sign Stands • Attenuators and Bases • Safety Cones • Chains and Binders • Hose Reels • Galvanized Guardrail • Assorted Size Galvanized and Plastic Corrugated Pipe • Precast Catch Basins, Inlets, and Pipe • Concrete Curb Stops • Super Silt and Silt Fence • Degradable Erosion Control Blanket • Chain Link and Wire Fence • 20' Overseas Storage Container • Cat 6 Cylinder Diesel (Cat D8H) (Condition Unknown) (Missing Turbo)

SHOP TOOLS

HOBART Fabricator Electric Welder, with leads and Hobart Porta-Feed 17-wire feeder and aluminum wire spool feeder • **HYPER THERM** Powermax 1000 Series G3 Portable Plasma Cutter • **WHITE INDUSTRIES** R134A Portable Refrigerant Management System • **CRAFTSMAN** RT80, 17" 16-Speed Drill Press • Oxygen/Acetylene torch Set with cart • 10 Ton Porta-Power with accessories • Hydraulic Floor Jack • **HANDY** 30 Gallon gas Caddy with Gasboy manual pump • Pneumatic and Manual Lubers • 9-Step Portable Metal Stairs • 5-Step Metal Stairs • (2) 2-Step Metal Stairs • 36" Hand Bender • **SHOP VAC** 20 Gallon Wet/Dry Vac • (4) Metal Shop Tables with vises • (2) Metal Horses • (4) Jack Stands • (4) Pipe Rollers • (4) Welding Screens • Shop Cart • 8' Fiberglass Step Ladder • (2) Natural Gas Fired Heaters • **RIDGID** 1/8" to 2" Manual Pipe Cutter • Assorted Lubricants • Oil Cans, Funnels, and Drain Pans • Metal and Plastic Fuel Cans • Air Pig • Small Quantity of Assorted Filters • Small Quantity of Assorted Bucket Teeth • Small Quantity of Steel Stock



HYDRAULIC EXCAVATORS AND ATTACHMENTS



'06
KOMATSU
PC400LC-
7E0

2006 KOMATSU PC400LC-7E0 Hydraulic Excavator, s/n A87097, Komatsu diesel and hydraulic drive, 11' dipper stick, Geith 66" digging bucket, hydraulic beyond, ac, 31.5" TBG pads, and 17"6" crawlers. In good condition with good undercarriage.



'07 KOMATSU PC220LC-8 (50' LONG STICK AVAILABLE-SOLD SEPARATELY)

2007 KOMATSU PC220LC-8 Hydraulic Excavator, s/n A88253, Komatsu diesel and hydraulic drive, 10' dipper stick with stiff arm bracket, ESCO 42" digging bucket, ac, 15"2" crawlers, and 32" TBG pads. In good condition with good undercarriage. **50' Long Reach Boom and Stick**, consisting of: 22'4" boom with cylinder, 21' stick, and 60" cleanup bucket. **(The PC220 and Long Reach boom Will Be Offered Individually, Then Offered As An Entirety Package)**



'05 KOMATSU
PC300LC-7L

2005 KOMATSU PC300LC-7L Hydraulic Excavator, s/n A86737, Komatsu diesel and hydraulic drive, 10'8" dipper stick with JRB hydraulic quick coupler, Hensley 46" digging bucket, ac, 31.5" TBG pads, and 16"2" crawlers. In good condition with good undercarriage.



'04 CAT 325CL

2004 CATERPILLAR 325CL Hydraulic Excavator, s/n CRB00767, Cat 3126 diesel and hydraulic drive, 10' dipper stick with hydraulic quick coupler, 36" digging bucket, ac, 15"4" crawlers, and 32" TBG pads. In good condition with good undercarriage.



'04 KOMATSU
PC300LC-7L

2004 KOMATSU PC300LC-7L Hydraulic Excavator, s/n A86030, Komatsu diesel and hydraulic drive, 10'8" dipper stick with JRB quick coupler, Lemac 56" digging bucket, ac, 31.5" TBG pads, and 16"3" crawlers. In good condition with good undercarriage.

1998 KOMATSU PC300LC-6LC Hydraulic Excavator, s/n A81068, Komatsu diesel and hydraulic drive, 10'8" dipper stick with hydraulic beyond, Vogel central lube system, 31.5" TBG pads, and 16"6" crawlers. In good condition with good undercarriage.



'98 KOMATSU PC300LC-6LC (HAMMER SOLD SEPARATELY)



'03 CAT 315CL

2003 CATERPILLAR 315CL Hydraulic Excavator, s/n CJC00670, Cat diesel and hydraulic drive, 10' dipper stick with Cat hydraulic quick coupler, 42" digging bucket, ac, 23.5" TBG pads, and 13' crawlers. In good condition with good undercarriage.

HYDRAULIC EXCAVATORS AND ATTACHMENTS



'06 CAT 314CLCR

2006 CATERPILLAR 314CLCR Hydraulic Excavator, s/n PCA01305, Cat 3064 diesel and hydraulic drive, 9'6" dipper stick, Cat hydraulic quick disconnect, Helac hydraulic wrist, Cat 30" digging bucket with bolt-on cutting edge, 102" backfill blade, zero tail swing, ac, street pads, 12'5" crawlers, and 24" TBG pads. In very good condition with good to very good undercarriage.



KOMATSU PC200-6 (GRAPPLE SOLD SEPARATELY)

KOMATSU PC200-6 Hydraulic Excavator, s/n 106916, Komatsu diesel and hydraulic drive, 10' dipper stick, hydraulic plumbing, ac, 13'5" crawlers, and 27.5" TBG pads. In good condition with fair to good undercarriage.



'00 KOMATSU PC150LC-6K

2000 KOMATSU PC150LC-6K Hydraulic Excavator, s/n K32160, Komatsu diesel and hydraulic drive, 8'6" dipper stick with JRB hydraulic quick coupler, Geith 36" digging bucket, ac, 13'5" crawlers, and 24" TBG pads. In good condition with good undercarriage.



'99 KOMATSU PC150LC-6K

1999 KOMATSU PC150LC-6K Hydraulic Excavator, s/n K30818, Komatsu diesel and hydraulic drive, 8'6" dipper stick with JRB hydraulic coupler, Lemac 36" digging bucket, 24" TBG pads, and 13'4" crawlers. In good condition with good undercarriage.



'01 CAT M318

2001 CATERPILLAR M318 Rubber Tired Excavator, s/n 8AL03143, Cat 3116 diesel and hydrostatic trans, 9'6" dipper stick, hydraulic beyond, multi-function hydraulics, Cat hydraulic quick coupler, 44" digging bucket, ac, and 10.00-20 tires. In good condition with fair to good tires.

2005 KENT KF35QT Hydraulic Demolition Hammer, s/n F35-2508, 3,298 ft. lb. impact energy, 28.5-35 ton machine class (PC300) • **2004 KENT KF22QT Hydraulic Demolition Hammer**, s/n 3536, 2,537 ft. lb. impact energy, 21-24 ton machine class (PC220/200) • **LABOUNTY 120HD, 5-Tine Grapple**, s/n 1274 (PC200 or PC220)



EXCAVATOR ATTACHMENTS

36" Compaction Wheel, with Cat Quick Tatch topper • **HENSLEY 24"** Compaction Wheel (PC150) • **HENSLEY 23"** Compaction Wheel-Quick Coupler • **22"** Compaction Wheel (PC220) • **22"** Compaction Wheel (Cat 315) • **ROLL PAK 22"** Compaction Wheel (Fits Komatsu PC150) • **22"** Compaction Wheel-Quick Coupler • **KENCO Mechanical Stump Splitter** • **CAT 48"** Digging Bucket with side cutters (Fits Cat 325C) • **CAT 32"** (Cat 325) • **52"** Skeletal Digging Bucket (PC220) • **GEITH 48"** Digging Bucket (PC300) • **GEITH 48"** Digging Bucket (PC300) • **KOMATSU 36"** Digging Bucket (PC300) • **CP 36"** Digging Bucket (PC300) • **GEITH 36"** Digging Bucket (PC300) • **HENSLEY 36"** Digging Bucket (PC300) • **GEITH 36"** Digging Bucket (PC220/200) • **GEITH 24"** Digging Bucket (PC220/200) • **CAT 48"** Digging Bucket (Cat 214) • **TSM 24"** Digging Bucket (Cat 215) • **CAT 24"** Digging Bucket (Cat 318) • **D/S 30"** Digging Bucket • **72"** Cleanup Bucket with hydraulic angle and Quick Tatch • Cat 60" Cleanup Bucket

LARGE ABSOLUTE AUCTION

CRAWLER TRACTORS



'89 CAT D8N

1989 CATERPILLAR D8N Crawler Tractor, s/n 9TC03704, Cat 3406 diesel and powershift trans, semi-U blade with tilt, Cat 4-barrel single shank ripper, differential steer, OROPS with heat, and 22" SBG pads. In good condition with good undercarriage.

2004 CATERPILLAR D6NXL Crawler Tractor, s/n ALH00318, Cat 3126 diesel and powershift trans, 6-way blade, differential steering, 3rd valve with ripper controls, EROPS with ac, drawbar, and 23.5" SBG pads. In good condition with good to very good undercarriage.

'04 CAT D6N XL



2005 CATERPILLAR D5NXL Crawler Tractor, s/n AGG01775, Cat 3126 diesel and powershift trans, 6-way blade, differential steering, 3rd valve with ripper controls, EROPS with ac, and 22" SBG pads. In very good condition with good to very good undercarriage.

'05 CAT D5N XL

2006 JOHN DEERE 700JLT Crawler Tractor, s/n 123348, John Deere Powertech 6.8L diesel and powershift trans, 6-way straight blade, joystick controls, EROPS with ac, and 20" SBG pads. In good to very good condition with good to very good undercarriage.

'06 JOHN DEERE 700J LT



2002 JOHN DEERE 550HLGP Crawler Tractor, s/n 910139, John Deere diesel and powershift trans, 6-way blade, joystick controls, EROPS with heat and ac, and 24" SBG pads. In good condition with very good undercarriage.

'02 JOHN DEERE 550H LGP

1990 CATERPILLAR D6H Series II Crawler Tractor, s/n 3ZF01400, Cat 3306 diesel and powershift trans, semi-U blade, differential steering, EROPS with ac and heat, drawbar, and 22" SBG pads. In good condition with very good undercarriage. (Less Than 1,000 Hours On Complete Cat Undercarriage)



'90 CAT D6H SERIES II

1,000 HOURS ON COMPLETE UNDERCARRIAGE



CATERPILLAR D7G Crawler Tractor, s/n 92V7387, Cat 3306 diesel and powershift trans, straight blade with right tilt, OROPS, and 22" SBG pads. In good condition with very good undercarriage.

CAT D7G

RUBBER TIED LOADERS

1997 CATERPILLAR IT38G Integrated Tool Carrier, s/n 7BS00355, Cat 3126 diesel and powershift trans, GP loader bucket, hydraulic quick coupler, auxiliary hydraulics, EROPS, and 20.5R25 tires. In good condition with good tires.



'97 CAT IT38G (FORKS SOLD SEPARATELY)



'05 KOMATSU WA250-5

2005 KOMATSU WA250-5 Rubber Tired Loader, s/n 70796, Komatsu 5.9L diesel and powershift trans, JRB GP loader bucket with bolt-on cutting edge, JRB hydraulic quick coupler, 3rd valve with auxiliary hydraulics, and 20.5R25 tires. In good condition with good tires.



'93 CAT 936F (WILL BE SOLD WITH NEW TIRES)

1993 CATERPILLAR 936F Rubber Tired Loader, s/n 8AJ01071, Cat 3304 diesel and powershift trans, GP loader bucket with teeth, JRB hydraulic quick coupler, EROPS with heat and ac, and 20.5R25 tires. In good condition with NEW tires. (Will Replace Tires With New Radials)
FORK ATTACHMENTS: JRB 60" (WA250/320) • 60" (IT38G)
 • JRB 60" (936F)

CRAWLER LOADERS



2000 CATERPILLAR 963C LGP Crawler Loader, s/n 2DS00853, Cat 3116 diesel and hydrostatic trans, GP loader bucket with teeth, EROPS with forestry package, ac, and 22" DBG pads. In good condition with fair undercarriage.

'00 CAT 963C LGP



'00 CAT 963C - SN 2DS00833

2000 CATERPILLAR 963C Crawler Loader, s/n 2DS00833, Cat 3116 diesel and hydrostatic trans, GP loader bucket with teeth, EROPS with ac, and 22" DBG pads. In good condition with fair to good undercarriage.

2003 CATERPILLAR 953C Crawler Loader, s/n 2ZN05488, Cat 3116 diesel and hydrostatic trans, GP loader bucket with teeth, EROPS with ac, and 19.5" DBG pads. In good condition with good undercarriage.

2000 CATERPILLAR 953C Crawler Loader, s/n 2ZN03215, Cat 3116 diesel and hydrostatic trans, GP loader bucket with teeth and cutting segments, EROPS with ac, and 19.5" DBG pads. In good condition with good undercarriage.



'03 & '00
CAT 953C

EQUIPMENT ATTACHMENTS

Double Drum Tow Behind Sheepsfoot Compactor, with (2) 60" drums • 9'6" Root Rake, 7-tooth with hydraulic clamp and Quick Tatch (Fits 963C) • **ROCKLAND 120"** GP Loader Bucket, Quick Tatch (Cat 936) • **GP** Loader Bucket with Quick Tatch

MOTOR GRADER AND MOTOR SCRAPERS



CAT 12G

CATERPILLAR 12G Articulated Motor Grader, s/n 61M6720, Cat 3306 diesel and 6 speed powershift trans, 12' all hydraulic moldboard, Spectra Precision blade controls, front mounted scarifier, EROPS with heat, and 15.5x25 tires. In good condition with good tires.



(2) OF (6) CAT 621B

(6) CATERPILLAR 621B Motor Scrapers, s/n 45P3752; s/n 45P2632; s/n 45P2585; s/n 45P1788; s/n 45P1847; s/n 45P1013, Cat 3406 diesel and 8 speed powershift trans, EROPS and 29.5x29 tires. In good condition with fair to good tires.

ARTICULATED END DUMPS



'01 & '00 CAT D350E SERIES II

2001 CATERPILLAR D350E Series II, 35 Ton, 6x6 Articulated End Dump, s/n 2XW00419, Cat 3406E diesel and automatic powershift trans, heated dump body, EROPS with ac, and 26.5R25 tires. In good condition with good tires.

2000 CATERPILLAR D350E Series II, 35 Ton, 6x6 Articulated End Dump, s/n 2XW00327, Cat 3406E diesel and automatic powershift trans, heated dump body, EROPS with ac, and 26.5R25 tires. In good condition with good tires.

1996 VOLVO A35C, 35 Ton, 6x6 Articulated End Dump, s/n A35CV4553, Volvo diesel and automatic powershift trans, heated dump body, EROPS with ac, and 26.5x25 tires. In good condition with fair to good tires.



'96 VOLVO A35C'S

1996 VOLVO A35C, 35 Ton 6x6 Articulated End Dump, s/n A35CV4552, Volvo diesel and automatic powershift trans, heated dump body, EROPS with ac, and 26.5x25 tires. In good condition with fair to good tires.

1996 VOLVO A35C, 35 Ton 6x6 Articulated End Dump, s/n A35CV4423, Volvo diesel and automatic powershift trans, heated dump body, EROPS with ac, and 26.5x25 tires. In good condition with fair to good tires.

1991 VOLVO A35, 35 Ton 6x6 Articulated End Dump, s/n A35V1643, Volvo diesel and powershift trans, heated dump body, EROPS with heat, and 26.5x25 E-3/L3 tires. In good condition with fair to good tires.



'96 VOLVO A25C'S

1996 VOLVO A25C, 6x6 Articulated End Dump, s/n 60804, Volvo diesel and automatic powershift trans, EROPS with ac and 23.5R25 tires. In fair to good condition with fair to good tires.

SOIL AND VIBRATORY COMPACTORS



1985 CATERPILLAR 815B Soil Compactor, s/n 17Z00534, Cat 3306 diesel and powershift trans, 38" padfoot wheels, 12' leveling blade, and OROPS. In good condition with good wheels.
CAT 815B AND 815

1980 CATERPILLAR 815 Soil Compactor, s/n 91P1966, Cat diesel and powershift trans, 37" wheels, 11' leveling blade, OROPS, and heater. In good condition with good wheels.

1995 CATERPILLAR CS563C Vibratory Compactor, s/n 4KN00279, Cat 3116 diesel and hydrostatic trans, 84" smooth drum, drum drive, OROPS, and 23.1x26 tires. In good condition with good tires.



'95 CAT CS563C & '88 IR SD-100D



'05 IR SD-70D TF SERIES

2005 INGERSOLL-RAND SD-70D TF Series Vibratory Compactor, s/n 182295, Cummins B4.5 diesel and hydrostatic trans, 66" smooth drum, drum drive, OROPS, and 14.9x24 tires. In good condition with good to very good tires.

1988 INGERSOLL-RAND SD-100D Vibratory Compactor, s/n 5502S, Cummins 4BTA3.9 diesel and hydrostatic trans, 84" smooth drum, drum drive, OROPS, and 23.1-26 tires. In good condition with good tires.



'01 IR SD-70D

2001 INGERSOLL-RAND SD-70D Pro Pac Vibratory Compactor, s/n 168757, Cummins B5.9C diesel and hydrostatic trans, 66" smooth drum, drum drive, OROPS, and 14.9x24 tires. In good condition with good tires.

'94 CAT CS-433B

1994 CATERPILLAR CS-433B Vibratory Compactor, s/n 4FK00217, Perkins diesel and hydrostatic trans, 66" smooth drum, drum drive, OROPS, and 14.9-24 tires. In good condition with good tires.

1989 INGERSOLL-RAND SD-40D Vibratory Compactor, s/n 5370-S, John Deere diesel and hydrostatic trans, 54" smooth drum, padfoot shell kit, drum drive, OROPS, and 12.4x24 tires. In good condition with good to very good tires.

2002 BOMAG BMP-851 Vibratory Trench Compactor, s/n 101720032252, Hatz diesel and hydrostatic trans, 33" split padfoot drums and umbilical remote control. In good condition.



'89 IR SD-40D WITH PADFOOT SHELL KIT

TRACTOR LOADER BACKHOES AND SKIP LOADER



'06 CAT 430D 4X4 EXTEND-A-HOE

2006 CATERPILLAR 430D, 4x4 Tractor Loader Extend-A-Hoe, s/n BNK07258, Cat diesel and shuttle trans, GP loader bucket, hydraulic plumbing, EROPS with ac, and 12.5/80x18 front and 19.5Lx24 rear tires. In very good condition with good to very good tires.



2003 CATERPILLAR 416D, 4x4 Tractor Loader Extend-A-Hoe, s/n BFP07467, Perkins diesel and shuttle trans, GP loader bucket, 24" digging bucket, EROPS with ac, and 12.5/80x18 front and 19.5Lx24 rear tires. In good condition with good tires.

'03 CAT 416D 4X4 EXTEND-A-HOE

1998 CASE 570LXT, 4x4 Skip Loader, s/n JJG0260010, Case diesel and shuttle trans, GP loader bucket, 3-point hitch, PTO, 5-spool hydraulic bank, EROPS with heat, and 12-16.5NHS front and 19.5L-24 rear tires. In good condition with fair to good tires.



'98 CASE 580L XT 4X4

2007 KENT KF9QT Hydraulic Demolition Hammer, s/n F9-4315, 1,500 ft. lb. impact energy (Cat 430) • **Gannon 7' Grading Box**, with ripper teeth

FORKLIFTS AND AIR COMPRESSORS



JCB 930 6,000#

JCB 930, 6,000# Rough Terrain Forklift, s/n 930-607193, Perkins diesel and shuttle trans, 3-stage mast, 48" forks, 15.5x25 front and 14.5/75x16.1 rear tires. In fair condition with good tires.

CATERPILLAR VC60D, 6,000# Cushion Tired Forklift, s/n 3E003528, Cat diesel and shuttle trans, 129" 2-stage mast, power side shift, 42" forks, and FOPS canopy with windshield. In good condition with very good tires.

CLARK C500-Y25, 5,000# Cushion Tired Forklift, s/n Y235-0196-5750FA, propane and shuttle trans, 132" 2-stage mast, 36" forks, and FOPS canopy. In good condition with good tires.

1988 INGERSOLL-RAND P185B-WJD, 185CFM Portable Air Compressor, s/n 171786U88329, John Deere diesel. In fair to good condition with good tires.



CAT 6,000# & CLARK 5,000#

MINI EXCAVATOR, SKID STEER LOADERS, AND ATTACHMENTS



'08 BOBCAT 331G & '06 BOBCAT MT52

2008 BOBCAT 331G Mini Hydraulic Excavator, s/n AAC511062, Kubota diesel and hydraulic drive, 47" dipper stick, swing boom, 24" digging bucket, 60" backfill blade, hydraulic plumbing, enclosed cab with ac, and 13"x76" rubber crawlers. In very good to excellent condition with very good to excellent undercarriage.

2005 BOBCAT 341G Mini Hydraulic Excavator, s/n 234713070, Kubota diesel and hydraulic drive, 74" dipper stick, swing boom, 24" digging bucket, manual quick disconnect, hydraulic plumbing, 76" backfill blade, EROPS with ac, and 16"x82" rubber crawlers. In good condition with good undercarriage.



'05 BOBCAT 341G



'04 CAT 257B

2004 CATERPILLAR 257B Crawler Skid Steer Loader, s/n SLK01516, Perkins diesel and hydrostatic trans, 72" GP bucket, auxiliary hydraulics, EROPS with heat and ac, and 16"x72" rubber crawlers. In good to very good condition with very good undercarriage.

2005 BOBCAT S205 Skid Steer Loader, s/n 528412899, Kubota diesel and hydrostatic trans, 79" GP bucket, hi-flow hydraulics, Power Bob-Tach coupler, EROPS with ac, and 10x16NHS tires. In good condition with very good tires.

'05 BOBCAT S205 (SWEEPER SOLD SEPARATELY)



'00 CAT 248 (COLD PLANER SOLD SEPARATELY)

2000 CATERPILLAR 248 Skid Steer Loader, s/n 6LZ00415, Perkins diesel and hydrostatic trans, 68" GP bucket, hi-flow hydraulics, EROPS, and 12x16.5NHS tires. In good condition with very good tires.

2006 BOBCAT MT52 Mini Track Loader, s/n 528711725, Kubota diesel and hydrostatic trans, 35" GP loader bucket with quick coupler, auxiliary hydraulics, and 7" rubber tracks. In good to very good condition with good undercarriage.

Skid Steer Attachments: CAT PC9, 32" Cold Planer, with power side shift and angle • MELROE 16" Cold Planer, with power side shift and angle • MCMILLEN X1975 Extreme Duty Hydraulic Auger Attachment, with 8" and 12" bits • BOBCAT B85D Hydraulic Demo Hammer • BOBCAT 84" Power Broom, with power angle • BOBCAT 72" Sweeper, with dump hopper • 2009 CAT BP15B Sweeper, with dump hopper • BOBCAT 60" Sweeper, with dump hopper • BOBCAT LR-5B Landscape Rake • SWEEPSTER 72" Sweeper, with dump hopper • FFC 96" Snow Pusher Blade, 7.0 cubic yard • (2) MELROE 66" Light Material Buckets, 1.0 cubic yard • BOBCAT Hydraulic Demo Hammer • 48" Fork Attachment • 72" 4-in-1 Loader Bucket

Mini Excavator Attachments: BOBCAT 30" Hydraulic Angle Cleanup Bucket (Bobcat 341G) • BOBCAT Wrist-O-Twist Quick Coupler • 40" Cleanup Bucket (quick coupler) • 24" Digging Bucket (quick coupler) • BOBCAT 13" Hydraulic Thumb Attachment • BOBCAT 10" Hydraulic Thumb Attachment • BOBCAT 13" Digging Bucket (quick coupler)

PORTABLE TUB GRINDER AND SCREEN



'96 DURATECH HD12

1996 DURATECH HD12 Portable Tub Grinder, s/n 21-2-FI-0074, Cat 3408, 505HP diesel and Twin Disc PTO, 12' diameter tub, hydraulic tub tilt, approximately 22' 2-section hydraulic log boom, rotating grapple, 18"x25' discharge conveyor, elevated operators station with ac, mounted on 30' Tandem Axle Carrier, (2) hydraulic outriggers and 215/75R17.5 tires. In good condition with good tires.



1988 READ RD-40A Portable Screen, s/n 635388, Lister Petter 2 cylinder diesel, 7'4"x6'6" double deck vibrating screen, transport wheels, and 9R17.5 tires. In good condition with good tires.

READ RD-40A

HYDROSEEDER AND STRAW BLOWER



'05 EASY LAWN C170 (HYDROSEEDER WILL BE SOLD SKID MOUNTED)

2005 EASY LAWN C170 Hydroseeder, s/n C-170-91, John Deere 2.4L diesel, 1,550 gallon mulch capacity with single agitator, 4"x3" pump, top side spray cannon, rear spray bar, hose reel with hand spray. In good to very good condition. (Will Be Sold Removed From Truck As A Skid Mount Unit)

2003 FINN B40 Straw Blower, s/n SQA-739, Kohler Command 20HP gas, skid mounted. In good condition.

LARGE ABSOLUTE AUCTION

ASPHALT MILLING MACHINE, PAVERS, AND ROLLERS



'06 CAT PM102 (890 HOURS)

2006 CATERPILLAR PM102 Milling Machine, s/n Z1X00223, Cat 3126, 290HP diesel and hydraulic drive, 39" cutting drum, 24" discharge conveyor, (4) independent crawlers, and 9" neoprene pads. In very good condition with very good undercarriage. **(890 Original Hours)**



'07 CAT AP800D

2007 CATERPILLAR AP800D Rubber Tired Paver, s/n A5P00193, Cat diesel and hydrostatic trans, Carlson EZIV-0815, 8'-15'9" screed with (2) 18" bolt-on extensions, Topcon laser system, auto slope and grade, auto slope extensions, power crown, dual steer bogies, and 16.00R25 tires. In good condition with good tires.

2004 LEEBOY 8500T Crawler Paver, s/n 40812HD, Deutz diesel and hydrostatic trans, Legend 8' vibratory screed with strike-off extensions to 15'6" and slope and grade controls. In good condition with good undercarriage.

'04 LEEBOY 8500T



2003 INGERSOLL-RAND DD90 Tandem Vibratory Asphalt Roller, s/n 172984, Cummins B3.9 diesel and hydrostatic trans, 66" tandem smooth drums, 2-frequency vibration, water system with front and rear spray, and OROPS. In good condition.

'03 IR DD90

2006 CATERPILLAR CB224E Tandem Vibratory Asphalt Roller, s/n 22401556, Cat diesel and hydrostatic trans, 47" smooth drums and water system. In good condition.

'06 CAT CB224E



'01 CAT CB224D

2001 CATERPILLAR CB224D Tandem Vibratory Asphalt Roller, s/n 8RZ00683, Cat 3013 diesel and hydrostatic trans, 47" smooth drums and water system. In good condition.

2002 WACKER RD11A Tandem Vibratory Asphalt Roller, s/n 5309349, Honda 18HP gas and hydrostatic trans, 35.5" smooth drums, water system, and ROPS post. In good condition.

CRAWLER DRILL



1999 INGERSOLL-RAND ECM-590 Crawler Drill, s/n R11177B, Cummins C8.3-C, 215HP diesel and hydraulic drive, drifter, air compressor, (3) 10"x2" drill steels, dust collector, 10'3" crawlers, and 12" pads. In good condition with good undercarriage.

'99 IR ECM-590

CRAWLER JAW CRUSHER

2004 KOMATSU BR350JG-1E Crawler Jaw Crusher, s/n 1346, Komatsu diesel and hydraulic drive, K2-3620 semi-auto set 36"x20" jaw crusher, 36"x10' reciprocating grizzly feeder, 36"x30' discharge conveyor, belt magnet, belt scale, 14'2" crawlers, and 20" TBG pads. In good condition with good undercarriage.



'04 KOMATSU BR350JG-1E JAW



TRI-AXLE DUMP TRUCKS



'07 MACK
CV713

2007 MACK CV713 Granite Tri-Axle Dump Truck, Mack AI-427, 427HP diesel and Allison automatic trans, Ox 16' steel dump body with air gate and power tarp, 10" apron, 44,000# rears, 18,000# front axle, Watson & Chalin 13,200# steerable lift axle, 2-stage brake, camelback suspension, aluminum front Budd wheels, ac, cc, heated mirrors, and 425/65R22.5 front and 11R22.5 lift axle and rear tires. In good condition with good tires.



'05 MACK
CV713

2005 MACK CV713 Granite Tri-Axle Dump Truck, Mack AI-427 diesel and Allison automatic trans, J&J 16'6" steel dump body with chute, power tarp, and air gate, 46,000# rears, 20,000# lift, and 16,540# front axle, 2-stage brake, camelback suspension, aluminum Budd wheels, ac, cc, heated mirrors, 315/80R22.5 front and lift, and 11R24.5 rear tires. In good condition with good tires.



'05 INT'L
7600

2005 INTERNATIONAL 7600 Tri-Axle Dump Truck, Cat C-13, 430HP diesel and Allison automatic trans, J&J 16'6" steel dump body with chute, 9" apron, power tarp, and air gate, 46,000# rears, 20,000# lift, and 16,540# front axle, 3-stage brake, walking beam suspension, aluminum Budd wheels, ac, cc, heated mirrors, 315/80R22.5 front and lift, and 11R24.5 rear tires. In good condition with good tires.



(5) OF (6) '97 MACK RD688S

(6) 1997 MACK RD688S Tri-Axle Dump Truck, Mack E7-350 diesel and Fuller 8LL, 10 speed trans, RS 16' steel dump body with 8" apron, power tarp, and air gate, 44,000# rears, 20,000# lift, and 18,000# front axle, 2-stage Jake brake, camelback suspension, aluminum front Budds, ac, 315/80R22.5 front and lift, and 11R22.5 rear tires. In good condition with good tires.

TRUCK TRACTORS AND LOWBOY TRAILERS



'05 KW W900 & '89 KW W900B

2005 KENWORTH W900 Tandem Axle Truck Tractor, Cat C-15, 475HP diesel and Eaton Fuller RTL018918B, 18 speed trans, wetline, 46,000# rears, 13,200# front axle, ABS brakes, 3-stage brake, air ride suspension, air slide 5th wheel, single frame, aluminum Budd wheels, 4:10 axle ratio, ac, cc, aluminum headache rack and fenders, 214" wheel-base, and 11R24.5 tires. In good to very good condition with good tires.

1989 KENWORTH W900B Tandem Axle Truck Tractor, Cat 3406B diesel and RT015613P, 13 speed trans, 40,000# rears, 12,000# front axle, wetline, 2-stage brake, air ride suspension, air slide 5th wheel, single frame, 191" wheelbase, aluminum Budd wheels, ac, and 11R24.5 tires. In good condition with good tires.

2002 ROGERS CR50PL86/51/24/102/3XAR, 50 Ton Tri-Axle Lowboy Trailer, hydraulic detachable non-ground bearing, 24'x8'6" load deck, 12'6" open over wheels, airlift 3rd axle, air ride suspension, outriggers, 121,610# GVWR, and 255/70R22.5 tires. In good condition with good tires.

1991 ROGERS TWHNF35DSF22-57-R20RS, 35 Ton Tandem Axle Lowboy Trailer, hydraulic detachable non-ground bearing, 22'x8'6" load deck, 6' open over wheels with 32" beavertail, spring suspension, outriggers, and 255/70R22.5 tires.

In good condition with good tires.



'02 ROGERS 50 TON & '91 ROGERS 35 TON

SINGLE AXLE DUMP, ROLL-BACK, AND FLAT DUMP TRUCKS



2006 GMC C5500, 4x4 Dump Truck, Duramax diesel and auto trans, Air Flo 11' landscape dump body with drop sides, Meyer plow package, dual rear wheels, tow package with electric, ac, and 245/70R19.5 tires. In good condition with good tires.

'06 GMC C5500 4X4

1994 MACK CH613 Tandem Axle Roll-Back Truck, Mack E7-350 diesel and Eaton Fuller 10 speed trans, Danco 24' roll-back body with Ramsey winch, 40,000# rears, 12,000# front axle, 2-stage brake, air ride suspension, aluminum Budd wheels, ac, cc, and 295/75R22.5 tires. In good condition with good tires.



'94 MACK CH613 WITH DANCO 24'

1987 INTERNATIONAL 1954 Single Axle Flatbed Dump Truck, International DT466 diesel and Spicer 5 speed trans with 2 speed rear, 17' steel dump body with stake pockets, tow package with air, air brakes, and 11R22.5 tires. In good condition with good tires.

LARGE ABSOLUTE AUCTION

FUEL/LUBE, SERVICE, AND WATER TRUCKS



'02 MACK CV713 FUEL/LUBE

2002 MACK CV713 Granite Tandem Axle Fuel/Lube Truck, Mack E7-350 diesel and Allison automatic trans, Curry Supply fuel/lube body with 2,100 gallon 2-compartment tank (1,800 fuel/300 waste oil), (5) product tanks with hose reels, pressure washer with hose reel EVAC system, fuel meter, camelback suspension, aluminum Budd wheels, 2-stage brake, ac, cc, 315/80R22.5 front and 11R24.5 rear tires. In good condition with good tires.



'89 & '88 MACK R690T

1989 MACK R690T Single Axle Service Truck, Mack EM6-250L diesel and Maxitorque 5 speed trans, IMT 11' service body, IMT 315A, 7,500# 2-section service crane, IMT hydraulic air compressor, (2) hydraulic stabilizers, and 11R22.5 tires. In good condition with very good tires. (Approximately 40,000 Miles On Engine)



'88 MACK RW713 4,000 GALLON

1988 MACK R690T Single Axle Service Truck, Mack EM6-250L diesel and Maxitorque 5 speed trans, Reading 11' service body, STI Tiger 10,000# 3-section service crane, Lincoln SA200 gas powered arc welder, Ingersoll-Rand air compressor with Kohler 12.5HP gas, and 11R22.5 tires. In good condition with good tires.
1988 MACK RW713 Tandem Axle Water Truck, Mack E6-350 diesel and Mack 9 speed trans, Brenner 4,000 gallon water body, PTO powered pump, air actuated spray heads, self-winding hose reel, single stage brake, camelback suspension, ac, and 11R24.5 tires. In good condition with good tires.

DISTRIBUTOR AND ASPHALT TRUCKS



**ETNYRE
BLACK
TOPPER
BT-RL**

2002 GMC 7500 Single Axle Distributor Truck, Cat 3126, 250HP diesel and automatic trans, Etnyre Black Topper BT-RL, 1,518 gallon distributor body, s/n J-6829, diesel, 10' spray bar, propane heat, double frame, ac, cc, heated mirrors, and 11R22.5 tires. In good condition with good tires.



**'00 INT'L 4700
ASPHALT TRUCK**

2000 INTERNATIONAL 4700 Single Axle Flatbed Asphalt Truck, International DT466E diesel and automatic trans, 16' steel flatbed with stake sides, Neal HT250 sealer, Honda gas and propane heat, (2) 500 gallon poly water tanks, 2" gas powered water pump, 200 gallon fuel tank with 12 volt pump, 254" wheelbase, hydraulic brakes, aluminum front Budd wheels, and 11R22.5 tires. In good condition with good tires.

DUMP AND FLATBED TRAILERS



**'87
RAVENS 34'
ALUMINUM**

1987 RAVENS 34' Tri-Axle Aluminum Dump Trailer, airlift 3rd axle, aluminum frame, swing gate with chute, spring suspension, aluminum Budd wheels, 70,000# GVWR, and 285/75R24.5 tires. In good condition with good tires.



**'88 RAVENS
30' STEEL**

1988 RAVENS 30' Tandem Axle Steel Dump Trailer, swing gate, power tarp, spring suspension, 70,000# GVWR, and 11R24.5 tires. In good condition with good tires.
1984 DORSEY DGTL-80, 45' Tandem Axle Flatbed Trailer, sliding tandems, spring suspension, bulkhead, ratchet straps, 62,390# GVWR, 80,000# structural capacity, and 11R24.5 tires. In good condition with good tires.

NO MINIMUMS • NO RESERVES

UTILITY TRACTOR AND ATTACHMENTS



'02 JD 7510 4X4 WITH AGRI-CHOPPER 5500

2002 JOHN DEERE 7510, 4x4 Utility Tractor, s/n 079261, John Deere 135HP diesel and 16 speed trans with shuttle shifter, John Deere 741 self-leveling loader attachment with quick coupler and GP loader bucket, 48" fork attachment, 3-point hitch, PTO, 2-spool hydraulics, ac, and 16.9R26 front and 18.4R38 rear tires. In good condition with good tires.



JD 1518

JOHN DEERE 1518, 15' Batwing Mower, s/n W01518F011801, PTO powered, hydraulic folding batwings.

AGRI-CHOPPER 5500 Portable Bale Chopper, s/n 12016, PTO powered, 7' rotary tub, hydraulic rotating discharge chute, and 11L-15SL turf tires. In good condition with fair tires.

HAYBUSTER 2544 Portable Straw Blower, s/n 110244, PTO powered, hydraulic feed and chopper, and discharge chute. In fair condition.

4-Gang Disc Harrow with transport wheels

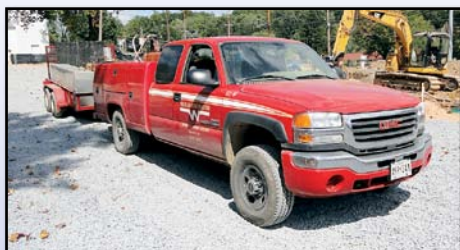
UTILITY TRUCKS



'06 FORD F-350XL 4X4

2006 FORD F-350XL Super Duty, 4x4 Quad Cab Utility Truck, Triton 5.4L gas and automatic trans, Reading open utility body with aluminum material rack, fuel tank with 12 volt pump, ac, and LT275/65R18 tires. In good condition with very good tires.

2005 GMC 2500HD SLE, 4x4 Quad Cab Utility Truck, Duramax 6.6L diesel and automatic trans, 8'6" open utility body with spray liner, tow package, ac, cc, power windows, locks and mirrors, and 265/75R16 tires. In good to very good condition with very good tires.



'05 GMC 2500HD 4X4

2005 GMC 2500HD SLE 4x4 Utility Truck, Vortec 6.0L, V-8 gas and automatic trans, Reading 8'6" open utility body, tow package with electric, ac, cc, power window and locks, and 285/75R16 tires. In good condition with good tires. (Meter Reads 69,361 Hours)

2004 FORD F-350XL Super Duty, 4x4 Quad Cab Utility Truck, Powerstroke 6.0L Turbo diesel and automatic trans, Reading 8'6" utility body with sliding top enclosure, aluminum material rack, tow package, dual fuel tanks, dual rear wheels, ac, and 235/85R16 tires. In good condition with good tires.

2004 FORD F-350 Utility Truck, Powerstroke 6.0L Turbo diesel and automatic trans, Reading 8'6" utility body with sliding top enclosure, aluminum material rack, tow package, dual fuel tanks, dual rear wheels, ac, and 235/85R16 tires.

2002 CHEVROLET 2500HD Silverado 4x4 Quad Cab Utility Truck, Duramax 6.6L diesel and automatic trans, 8' open utility bed with spray liner, ac, and 265/75R16 tires. In good condition with very good tires.

PICKUP TRUCKS AND SPORT UTILITY VEHICLES



'07 GMC 2500HD 4X4

2007 GMC 2500HD, 4x4 Quad Cab Pickup Truck, Vortec 6.0L gas and automatic trans, 6'6" bed with spray liner, side boxes, tow package with electric, Z-71 sport package, alloy wheels, full power package, and 285/70R17 tires. In good condition with very good tires.

2006 FORD F-250XL Super Duty, 4x4 Quad Cab Pickup Truck, Powerstroke Turbo diesel and automatic trans, 7' bed with side boxes and spray liner, tow package with electric, ac, cc, power windows and locks, and LT267/70R17 tires. In good condition with good tires.

2006 FORD F-250 4X4 Crew Cab Pickup Truck, Powerstroke 6.0L diesel and automatic trans, 7' bed with spray liner, cross tool box, power windows, locks, mirrors and seats, power sliding rear window, sunroof, heated seats, leather interior, tubular chrome running boards, ac, cc, and 285/65R18 tires. In very good condition with very good tires.



'06 FORD F-250 4X4 CREW CAB

2006 FORD F-150, 4x4 Quad Cab Pickup Truck, Triton 4.6L gas and automatic trans, 6.5' bed with step fuel tank and cross box, ac, cc, and P255/70R17 tires. In good condition with good tires.

2005 GMC 2500HD SLE, 4x4 Quad Cab Pickup Truck, Vortec 6.0L gas and automatic trans, 8' bed with spray liner, tow package with electric, ac, cc, power windows, locks and mirrors, and LT265/75R16 tires. In good condition with good tires.

2004 FORD F-350XL Super Duty Crew Cab Pickup Truck, Powerstroke 6.0L Turbo diesel and automatic trans, 8' bed with utility cap, tow package with electric, ac, and LT265/75R16 tires. In good condition with good tires.

2003 GMC 2500HD SLE 4x4 Quad Cab Pickup Truck, Duramax 6.6L diesel and automatic trans, 6'6" bed with cross and side boxes, spray bed liner, tow package with electric, ac, cc, power windows, locks, mirrors, and seats, and LT285/75R16 tires. In good condition with good tires.

2002 FORD F-250XL Super Duty, 4x4 Quad Cab Pickup Truck, Powerstroke 6.0L diesel and automatic trans, 8' bed with utility cap, tow package with electric, ac, and LT265/75R16 tires. In good condition with good tires.

1999 FORD F-250 Super Duty, 4x4 Quad Cab Pickup Truck, Powerstroke 7.0L diesel and 6 speed manual trans, 7' bed, plow package, tow package with electric, ac, cc, and LT26 5/75R16 tires. In good condition with good tires.



(4) OF (8) 4X4 PICKUP TRUCKS

2005 FORD Escape XLT, 4x4 4-Door Sport Utility Vehicle, V-6 gas and automatic trans, power moon roof, alloy wheels, full power package, ac, cc, AM/FM 6-CD player, and 235/70R16 tires. In good condition with very good tires.

TAG-A-LONG TRAILERS

2001 CUSTOM TRAILER 4T200ED, 8,000# Tandem Axle Tag-A-Long Trailer, 14'x6'4" deck, 2' beavertail with ramps, pintle tow, electric brakes • **2000 CUSTOM TRAILER 8,000# Tandem Axle Tag-A-Long Trailer**, 16'x6'9" deck with ramps, pintle tow, electric brakes • **2003 BRIMORE Tandem Axle Tag-A-Long Trailer**, 16'x8' deck, 4' beavertail with ramps, pintle tow, electric brakes • **1995 PREMIER Tandem Axle Tag-A-Long Concrete Saw Trailer**, 12'x6' deck with ramps, (2) approx. 400 gallon aluminum water tanks, pintle tow, electric brakes, 7,000# GVWR • **1988 CUSTOM TRAILER Tandem Axle Tag-A-Long Trailer**, 12'x6'6" deck with ramps, pintle tow, electric brakes

ANTIQUE TRACTORS

1937 CATERPILLAR R2 Crawler Tractor, s/n 4J751SP, 4 cylinder gas, crank start, hydraulic straight blade. (Not Running) • **1947 CATERPILLAR D4 Crawler Tractor**, s/n 7U13942, 4 cylinder diesel and direct drive trans, C-frame blade, sun canopy, and 16" SBG pads (Not Running)