



# LARKIN STREET YOUTH SERVICES ANNUAL REPORT 2017



YOUTH SERVICES

# A LETTER FROM OUR EXECUTIVE DIRECTOR + BOARD CHAIR



## JOIN US IN THE MOVEMENT TO END YOUTH HOMELESSNESS

Dear Friends,

While 2017 brought many challenges, the work to prevent and end youth homelessness continues to build tremendous momentum thanks to Larkin Street's amazing and dedicated community: our staff, elected and appointed officials, sponsors, donors and volunteers who collectively ensure our vision comes to life and has impact.

Sadly, last year, we mourned the loss of two dedicated members of our staff, **Candace Freeman** and **Brendan Dunningan**, as well as San Francisco's Mayor **Edwin M. Lee**, but remained focused on continuing to make meaningful enhancements to our services at Larkin Street. We re-opened **the LOFT**, our transitional living program for foster youth, enjoyed a stellar **Performing Arts Night**, and held one of our most successful **Paving the Way** galas ever. We also completed our \$10 million **Growth Campaign**, which allowed us to both deepen and diversify our services.

In addition to these direct services for young people, we worked to raise awareness at the City, State and Federal levels about what it takes to prevent and end youth homelessness. Locally, we were elated to see a 13% decrease in the number of young people experiencing

homelessness, according to the **2017 San Francisco Point-in-Time Youth Count**. This decrease occurred during a time of increased investments, both by our supporters through our Growth Campaign and by the City of San Francisco. If these increased investments reduced homelessness by 13%, just imagine what larger investments could accomplish!

We're grateful to see the State of California taking the lead on such investments, beginning with an informational hearing on youth homelessness lead by **State Senator Scott Wiener** and **Assemblywoman Blanca Rubio**, followed by a new bill to create a statewide Office of Homeless Youth and direct \$60 million in funding to address the alarming rise of youth homelessness in California. Please support these initiatives in the months ahead!

Nationally, the groundbreaking **Voices of Youth Count** study released by Chapin Hall at the University of Chicago revealed **that one in 10 young adults between the ages of 18 and 25 experiences some form of homelessness over the course of a year**. Because young people often avoid the streets, such counts are extremely difficult, and without dependable data, policymakers are less able to act. The Voices of Youth

Count data has already allowed us to advocate for nationwide public funding through A Way Home America's policy work to end youth homelessness.



**The momentum to end youth homelessness continues to grow and we are encouraged by the increased commitments to young people at all levels.**

Looking ahead, 2018 will bring new challenges and opportunities. We will soon launch an external evaluation of our programs, and begin our next five-year strategic plan, building on the strength of this nationwide momentum.

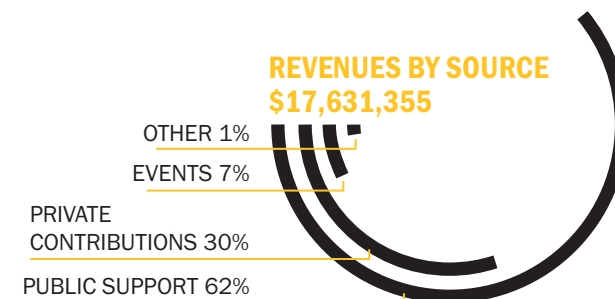
**You are invited to join us in the movement to end youth homelessness.** We have a collective responsibility – as a community and as a country – to ensure that every young person can reach their full potential. With the right investments and policies, we can ensure that any experience of homelessness by a young person is rare, brief, and nonrecurring.

Together, we can end homelessness for all young people.

In gratitude and community,

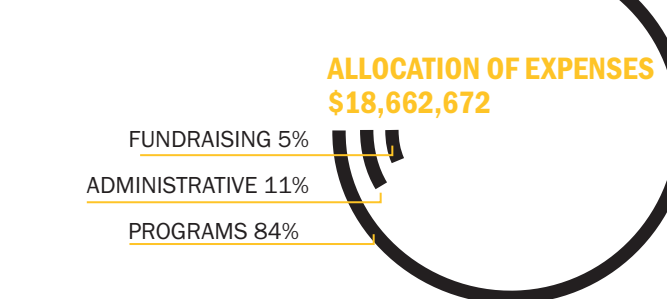

  
 Sherilyn Adams Executive Director      Terry Kramer Chair, Board of Directors

# REVENUE + EXPENSES



Figures are taken from fiscal year 2016-17 audited financial statements. The deficit shown is due to an increase in staffing and

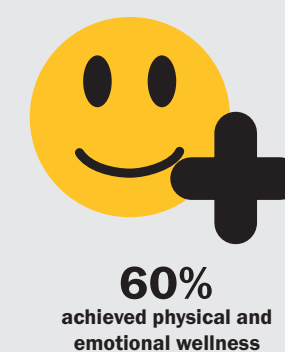
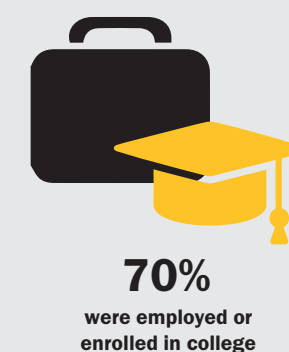
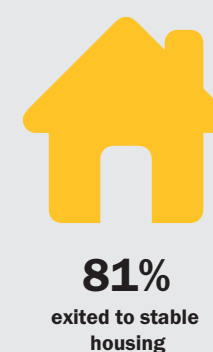
infrastructure necessary to deliver high quality services, as well as new rules regarding multi-year pledges that resulted in a timing



difference in deferred revenue recognition. For fiscal year 2017-18, public sector revenue is stable, and private sector revenue is well

ahead of schedule. With revenue growing and expenses in line, our projections are for a balanced budget for 2018.

## OUR RESULTS



## BOARD OF DIRECTORS

### OFFICERS

Terry Kramer, Chair  
 Susan K. Alexander, Vice-Chair  
 Jeremy Avenier, Secretary  
 Art Fatum, Treasurer  
 Adam Moise, At-Large  
 Allison Wysocki, At-Large  
 Sherilyn Adams, Executive Director

### BOARD MEMBERS

Fiona Barnett  
 Siri Berg  
 Jennifer Brahm  
 Cecily Cameron  
 Daniel A. Cody  
 Conor Famulener  
 Jeff Garelick  
 Blake Grossman  
 Jim Henry  
 John W. Hicks

Anne Hoecker  
 Eric Johnson  
 Adamar Kassahun  
 Richard Kerzic  
 Patrick Kiss  
 Natalie Hatvany Kitchen  
 Willis Newton  
 Eric Roos  
 Philip Schlein  
 Aaron C. Schwartz  
 Sally Shapiro  
 John Viola  
 Charles J. Wibbelsman, M.D.

### HONORARY BOARD MEMBERS

Terry Allen-Rouman  
 Chris Brahm  
 Teresa Briggs  
 Ray Brown

William F. Campbell  
 Laurence A. Colton  
 Jay Cuetara  
 Charles Dickie  
 Penelope Douglas  
 Mark A. Edmunds  
 Annie Ellicott  
 Tim Emanuels  
 Phillip S. Estes  
 Bob Garrett  
 Judy Getto  
 Julie B. Harkins  
 Vince Hoenigman  
 Steve Janowsky  
 Victoria J. Johnson  
 Blake Jorgensen  
 Debbie G. Jorgensen  
 John E. Kalin  
 Stephen C. Kirmse  
 Stephen Koch  
 Mary V. Lester

Elizabeth A. Levy Ward  
 Kathie Lowry  
 John L. Martin  
 John E. Martinez  
 Paul R. Mohun  
 Maria Muzio  
 David J. Nygren, Ph.D.  
 Carla B. Oakley  
 Mary M. Prchal  
 Jean Richardson  
 Henry Safrit, M.D.  
 J. Milton Seropan  
 Sandra Stangl  
 Anne B. Stanton  
 David A. Thompson  
 Christine A. Tsingos  
 Carla Washington  
 Gregory W. Wendt  
 Victoria Willock  
 David B. Zenoff  
 C. David Zoba

# LAST YEAR AT LARKIN STREET

The **United Way Bay Area** and the **Mayor's Youth Job Plus Program** joined us for the first "Neighborhood Job Fair" at our Tenderloin headquarters. Over 25 companies attended and conducted interviews with young people ages 16 to 24 from all over San Francisco. Our thanks to all the employers and special guest **Supervisor Jane Kim** for attending!

This year we completed our **\$10 million Growth Campaign!** Thanks to our wonderful community, we've been able to expand our education and employment model, case management, behavioral health services, advocacy work, infrastructure and facilities. Congratulations and thank you very much for supporting our work to end youth homelessness!

Our annual **Queer Youth Space** at **San Francisco Pride** was

a blast as we held a party in Civic Center Plaza just for young people that offered free snacks, health education, and glitter hair and makeup art. Over the course of the weekend, staff from Larkin Street raised awareness for our services and provided a safe and social space for LGBTQ youth and allies.

In partnership with the UCSF and the San Francisco Department of Public Health, we presented **San Francisco's Biomedical HIV Prevention and Care Continuum for Youth**, a poster on HIV prevention and the care needs of LGBTQ youth and youth of color in San Francisco. The presentation identifies findings from the needs assessment, the scope of services currently available, and conclusions about how to reduce health disparities.

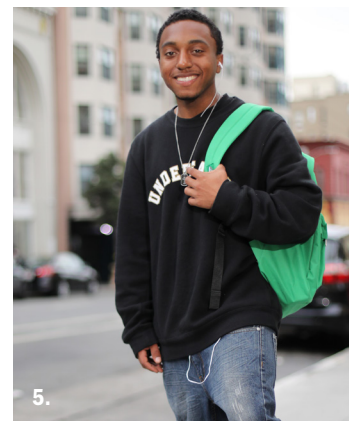
The winter season brought cheer as always at Larkin

Street. Our annual Holiday Gift Drive exceeded expectations with gifts from the community overflowing our offices this year. Combined with our annual Harvest and Winter Festivals for our young people, we felt the love as **more than 200 volunteers brought the spirit of service** through our doors. Over the course of the last year, volunteers contributed more than 2,000 hours with groups from partners including **Comerica, Docusign, Google, Salesforce, and Wells Fargo** supporting our work through hands-on volunteering.

In December, we were thrilled to host the **Golden State Warriors' Kevin Durant** at one of our housing programs. He took a tour of the building, and after handing out gifts, graciously posed for dozens of photos. Needless to say, both the young people and our staff were thrilled to meet this basketball superstar! We so appreciate



KD's visit and awesome presents, and our friends at **Alaska Airlines** for making this very special day possible!



1. Larkin Street staff feeling the spirit at our Queer Youth Space at San Francisco Pride.
2. Young people getting "fairy hair" treatments at our Queer Youth Space.
3. The Warriors' Kevin Durant, top center, surrounded by Larkin Street young people and Executive Director Sherilyn Adams.
4. Kevin Durant talks one-on-one with a young person as the crowd looks on.
5. Joshua Gaines outside of our Golden Gate Avenue headquarters.



## KNOWLEDGE LEADERSHIP

Our policy and advocacy activities provide information to support policymakers in making sound decisions around youth homelessness. Larkin Street's Research and Evaluation Department supports this work by providing data and insights both about our services and the broader landscape. The result is a well-informed organization that infuses best practices throughout our offerings and frequently shares those learnings with others in the community.

### POLICY AND ADVOCACY WORK

In the fall, our **Youth Advisory Board** led a successful "Get Out the Vote" initiative including registration drives, voter education, and mobilization activities that engaged young people in the political process.

In all, more than 50 young people registered and voted, some for the first time. The Youth Advisory Board also took their voice to the Capitol in April by participating in the California Coalition for Youth's **Taking Action Conference and Legislative Advocacy Day**.

Youth and staff at Larkin Street played a key role in successfully advocating for more than \$10 million in new local, state, and federal funding to target youth homelessness in San Francisco, including the federal **Youth Homelessness Demonstration Program** and expanded state **Homeless Youth Emergency Program** funding.

Our Executive Director Sherilyn Adams was selected by the **Robert Wood Johnson Foundation** as an

**Interdisciplinary Research Leader** to take part with faculty from UCB and UCSF in a three-year research project exploring the intersection of homelessness and violence among youth.

Two important studies shared new data about young people experiencing homelessness: **The San Francisco Point-in-Time Count** showed that youth homelessness decreased by about 13% between 2015 and 2017, an important point of proof in the movement to end youth homelessness. Young people and staff at Larkin Street also participated in the visual count in January in partnership with the City of San Francisco.

The groundbreaking **Voices of Youth Count** released by **Chapin Hall** in November revealed

that one in 10 young adults between the ages of 18 and 25 experience some form of homelessness over the course of a year. For decades, a lack of dependable data on the size of this population and characteristics of young people experiencing homelessness has created roadblocks to change.

Finally, this year brought the publication of our latest report on the **Incidence and Needs of Youth and Young Adult Homelessness in San Francisco**. The report provides a comprehensive look at the scope and causes of youth homelessness, barriers to stability, our model and results, and recommendations for the City, State and Federal governments to better address this crisis.

# SPECIAL EVENTS AT LARKIN STREET



## PAVING THE WAY GALA

March 3, 2017  
This year was even better than we could have imagined – we raised more than one million dollars to end youth homelessness! Thank you so much to everyone who made an incredible night possible: Renel Brooks-Moon, Jeremy Affeldt, our two youth speakers, Ameer Acker and Stephanie Monroe, and founder sponsors Camberview Partners, Kaiser Permanente, Mary V. Lester, Sharon and Craig McCollam, and Union Bank, as well as our staff, volunteers and guests.

## THE BAY AREA CFO OF THE YEAR AWARDS

May 24, 2017  
More than 500 guests helped us recognize the Winners and Finalists at our 12th annual ceremony including 2017 Hall of Fame Lifetime Achievement Award Winner Robin L. Washington, Executive Vice President and Chief Financial Officer of Gilead Sciences, Inc. Raising over \$500,000, the event was made possible by our title sponsors, Deloitte and Marsh & McLennan Agency, and co-presenters, the San Francisco Business Times.

## ANNUAL EDUCATION GRADUATION

Aug. 4, 2017  
We celebrated the many graduates of Larkin Street Academy's education and employment programs amidst a crowd of friends, family, staff and supporters. Young people received certificates and were recognized for their accomplishments over the past year, from GEDs to Bachelor's Degrees. Special thanks to all our speakers and staff who worked very hard to make this day memorable with decorations, music, a photo booth, lunch, and cake.

## PERFORMING ARTS NIGHT

Nov. 8, 2017  
This year's annual show, put on by young people in our Arts Program, was a huge success. Nine amazing performers gave us song, dance, comedy, visual arts, and so much hope and inspiration. Of course, many partners and team members made the show possible including the William Flora and Hewlett Packard Foundation, Bandworks and Phil Estes, Kelly Cullen Community, Theatre of Others, and Alaska Airlines.

## FRIENDS OF LARKIN STREET ICE SKATING PARTY

Dec. 6, 2017  
The eighth annual ice skating party from our next-generation group of supporters, Friends of Larkin Street, was a festive fundraiser as always! Folks skated the night away to a great DJ, in the process, raising more than \$45,000 to support our work to end youth homelessness. We couldn't have done it without our sponsors Bank of America, Sharp, Lockton Insurance Brokers, Peninsula Custom Homes, SnapFiesta, and Lagunitas.



1. Young people show off their diplomas at our Annual Education Graduation.
2. Robin L. Washington, Executive Vice President and Chief Financial Officer of Gilead Sciences, Inc., the 2017 Bay Area CFO of the Year Hall of Fame Lifetime Achievement Award Winner with Kevin Young, CBE, Chief Operating Officer of Gilead Sciences.
3. A group of folks having fun at the eighth annual Friends of Larkin Street Ice Skating Party.
4. Young people taking a bow at the conclusion of our 2017 Performing Arts Night.
5. Ameer Acker, youth speaker and winner of the The Larkin Street 2018 "Going the Distance" Youth Achievement Award with Antonio Zeledon, Program Manager.
6. Stephanie Monroe, another youth speaker and winner of the The Larkin Street 2018 "Going the Distance" Youth Achievement Award.
7. Jeremy Affeldt, three-time World Series Champion, Former Pitcher for the San Francisco Giants, Author, and Founder of Generation Alive, receives the Anne B. Stanton Award at our Paving the Way Gala.

# JULY 2016 TO JUNE 2017 DONORS

## INDIVIDUAL GIVING

### \$300,000 AND GREATER

David Cush  
The Grossman Family Charitable Fund

### \$100,000 TO \$299,999

Lisa and Greg Wendt

### \$50,000 TO \$99,999

Chris and Jennifer Brahm  
Cecily Cameron and Derek Schrier  
Robert and Dana Emery  
Family Foundation  
Louis Gries

### \$25,000 TO \$49,999

Suzi Alexander and Gary Stolzoff  
Kevin Bates  
Robert and Siri Berg  
Christina and John Kecker  
Mary Lester  
Sharon and Craig McCollam  
Laura Powell and Chuck Byce  
Helen Steyer

### \$10,000 TO \$24,999

Anonymous (4)  
The Baker Family Charitable Fund of  
Vanguard Charitable  
Thomas and Janai Brengman  
Jeffrey Byers  
The Cannella and Bianco  
Charitable Fund  
Ruth M. Collins Fund  
Bruce Colman  
The Connolly Family  
Matthew Davis  
Regina Dugan  
Beth and Tim Emanuels  
Nancy and Phil Estes  
Nino Fanlo and Laura Flourens-Fanlo  
Art and Barbara Fatum  
Mrs. Donald G. Fisher  
Drs. Matthew and Diana Gordon  
Mark Richard Grace  
Nina Hatvany and Jonathan Kitchen  
Hopper-Dean Foundation  
Honey and Peter Johnson  
Debbie and Blake Jorgensen  
Hank Khachaturian  
David L. Kirp  
Mr. Kirk Lester  
Kathie and Dexter Lowry  
Sharad Mangalick  
John and Kimberley Martinez  
Nicholas Montana  
Carla Oakley and Kevin McCarthy  
JaMel and Tom Perkins Family  
Foundation Fund  
Mary M. Prchal  
Paula B. Pretlow  
Eric Roos and Jack Richards

Aaron and Barbro Sasson  
Schlein Family Foundation  
Phil Schlein and T Beller  
Joerg Schumann and Sara Roberts  
Kathleen Scutchfield  
Sam Stern  
Jim and Sally Shapiro  
Michelle and James Shorin  
William Snider and Brian Cameron  
Pete Solvik and Becky Christian  
Sam Stern  
Karen Trilevsky  
Robin and Carl Washington  
Stefani Wedl and Darren Schulte  
Elise Wen  
Allison Wysocki

### \$5,000 TO \$9,999

Anonymous (4)  
Sherilyn Adams and Elaine Teoh  
Barbara Bass Bakar  
Fiona and Hal Barnett  
Carolyn and Morris Beazley  
Bennett Blau  
Lorraine Bosche  
The Burt and Barbara Foundation  
Giovanni and Vanessa Colella  
James Corbett  
Ed Coyne and Laura Wilson  
The Crown Family  
Stephanie DiMarco and Jim Harleen  
Mary Lou Dorking  
Barry and Meredith Eggers  
Simon Elliott and Suzan Canli  
Mrs. James B. Frankel  
Andrew and Barbara Fremder  
Jennifer and Abe Friedman  
Michelle and Robert Friend  
Foundation  
Karen and Randy Frost  
Jennie Funk and Brian Jenson  
Bob and Suzanne Garrett  
Gay Chemists Support  
Fund of Horizons Foundation  
John and Marcia Goldman  
Philanthropic Fund  
Sian Gowan  
Hoenigman Family Foundation  
Sy Kaufman  
Francis Keep  
Lyn and Don Klein  
Terry and Suzan Kramer  
Michael S. Kwun and  
Sigrid Anderson-Kwun  
Elaine B. Larkin  
Scott and Erica Lindstrom-Dake  
Mark and Lori Lomele  
Leslie and Mac McQuown  
Adam and Alyson Moise  
Omar Family Charitable Fund  
Mr. John S. Rosekrans  
Pamela and John Sebastian  
Milt and Judy Seropan

Lorinda Silverstein  
Daniel D. Springer  
Brian and Suzanne Trainor  
Christine A. Tsingos  
John and Monique Viola  
Diane B. Wilsey  
Marty Wilson and Sandy Barbour  
Douglas and Jane Wolf  
Jack and Margaret Yusko  
Peggy and Lee Zeigler  
Karen Zuercher

### \$1,000 TO \$4,999

Anonymous (23)  
Anonymous advised  
fund of the Silicon Valley  
Community Foundation  
The A & P Lesbian Fund of  
Horizons Foundation  
Christy Abreu  
Melissa and Brian Ahern  
Matt Aljets and Amanda  
Constantinesco  
Thorsten Anderson  
Tim Anderson  
Michelle Ravn Appelqvist  
and Alex Appelqvist  
Myrtle L. Atkinson Foundation  
Bret Austhof  
Pam and Larry Baer Family Fund  
Sandra Bagnatori  
Richard C. Barker  
Jennifer Peak Barker Family Fund  
Peter Bausch and Joyce Holland  
Nancy and Joachim Bechtle  
Teri Behm  
Mr. and Mrs. William Belardi  
Nick Bell  
Valli Benesch and Bob Tandler  
Philanthropic Fund  
Jarl Berntzen and Taemee Hur  
Jack and JoAnn Bertges  
Alexander Best  
Tomoko Beytien  
Judith Binsacca  
Rob and Cynthia Birmingham  
Karen Blasing  
Max Braun  
Daniel C. Brick  
Teresa Briggs  
Joanna Bueche and Timothy Pueyo  
Pete Bullard and Andrew Ogus  
Alicia Burt  
John Busby  
Bill and Marilyn Campbell  
Lycia Carmody  
Shea Caruthers  
Charlie's Do-Good-Stuff Fund  
I Chera & Sons Foundation  
Liza Cherney  
Jonathan Cline  
Edward and Nancy Conner Fund

Cynthia F. Cornell  
Carson Cox and Deborah Haase  
Louise and Nancy E. Crawford  
James and Kellee Cross  
Tom and Jennifer Cunningham  
Jessica Curran, The Peco Foundation  
Lauren Czorniak  
Gretta and Rodney  
D'Acquisto  
Timothy G. Davenport  
Joseph Davin  
David and Jennifer DeGraaff  
Gokul Dhingra  
Charlie and Leslie Dicke  
Grace and James Dignan  
Michelle and Mark Edmunds  
Annie Ellicott  
Howard and Carol Fine  
Marie Fontenot  
Ben and Katie Fort  
Carol L. Francis and Steve  
Ellier Chapman  
Tom Frankel  
Katherine Fraser and Steve Larson  
Richard and Stephanie Fredericks  
Ellen A. Friedman  
Vicki Friedberg  
David and Suzanne Friend  
Patty Fukami  
Jeff Garelick  
Anne Gomez  
Susan and Sidney Goodwill  
Employees of Google  
Shali Goradia  
The Jeff Grafton Charitable Fund of  
Vanguard Charitable  
Jenny Gregory  
Amy Grossman  
Jane Grossman and Brad Rassler  
Taylor Grossman  
The Hallett Family Charitable Fund of  
Vanguard Charitable  
Scott and Lisa Halsted  
Drew Hamlin  
Douglas Hanlin  
Carl Hansen  
Edward G. Harrison  
Parker Harris and Holly Johnson  
Kelly Hawk and Brian Kusler  
Thomas C. Hays and Mary Ann Hays  
Family Foundation  
Michael and Julie Hennessey  
Jim and Pam Henry  
Gerry Hill, Ph.D.  
Cameron Hill  
Adam H. Holt and Susanna  
Giles Holt  
Winnifred and Bruce  
Homer-Smith  
Michael Hope  
The Honorable James Hormel

Sue and Ken Huesby  
Ms. Martha Huettl  
Patricia A. Hughes  
Susan E. Hunter  
Mr. and Mrs. Harold M. Isbell  
Dave Janiszewski and Christine  
Carolan  
Julie Jenanyan  
Matthew Jenny  
Eric and Molly Johnson  
Judith Jones  
Dan Joraanstad and Bob Hermann  
Faith in the Future Fund of Horizons  
Foundation  
Dan, Rosemary, David, Dan and  
Deborah Kaplan  
Thomas R. Kearney  
David M. Kelly  
Richard Kerzic and Jennifer Beck  
Greg Kieber and Anne Etgen  
Anne and Loren Kieve  
Barbara and David Kimport  
Paul Kitchen and Elizabeth Franson  
Carole and Henry Klyce  
Bill Knutsen  
Stephen Koch and Kathryn Nyrop  
Sean Kreiger and Roger Kuhn  
Bruce Kubicka and Jackie Whittier  
Kubicka  
Trista LaCour  
Nancy and Lory Lacsamana  
David LaHorgue  
Chris Lane and Supada Homnuan  
Danielle LaRoy  
Stacey Lawrence  
Holden Lee  
Cathie Lesjak  
Julian Lopez  
Roger M. Low  
Barry Lozier  
Chase Lyman  
Richard and Jennifer Lyons  
Dr. Michael MacDonald- Aesthetic  
Surgery Center  
Harpinder Madan  
Allyson and David Madrid  
Larry and Karen Maguire  
Lisa W. Maibach and John K.  
Yamaguchi  
Steven Malik  
Mia Mardikian and Allie Bartholomew  
Sharon Martin  
Eric M. Marton Charitable Giving Fund  
Diane Mason and Mick Thomas  
Dan Massey  
Susan and Steven Masters  
Scott Mataya  
George Mathew  
Alice and Fraser McAlpine  
Dan and Bayley McKenna  
Brendan McKeon  
Thomas and Hannah McKinley  
Ellen McLean and Anthony Imhof, III  
Carolee and Terrence Mech  
James Meehan  
Ali Messing

Marc and Debbie Metcalf  
Paulette Meyer and David Friedman  
Peter Michelsen  
Michael D. Miller and Ronald Eastman  
Nancy Milliken, M.D.  
Eric Mori  
Lawrie Mott  
Loretta and Mark Mullins  
Brian Murdy  
Andrea and Scott Nagelson  
Lisa Nahmanson and Sandra Steele  
The Nakada-Hoang Donor Advised  
Fund of the Asian Pacific Fund  
The Nasiri Foundation  
Shaasta Nelson  
Robert Newbold  
Willis and Peggy Newton  
Andy Nguyen  
Jeff Nussbaum and Chris Tigno  
Dr. David J. Nygren  
The Oshay Family Foundation  
Emmanuel Papoutsakis  
Janine Paver and Eric Brown  
Cara Peck  
Vicki and Jim Penny  
William Pentney and Jennifer  
Kuczenski  
Richard A. Petit  
Duane E. Phillips  
René Picazo  
Simon Pickford  
Graham and Sarah Pingree  
Matthew Pittorf  
Christina Polischuk  
John Pritzker  
PSN Family Charitable Trust  
Karen Quint and Christopher  
Griffin  
Thomas A. Raffin  
Donald Rathbone and Lawrence Hilty  
Adam Reedy  
Robert Ristelhueber  
Lisa and Dan Roberts  
Anne and Martin Roher  
Dave and Sandra Roos  
Seth Rosenthal  
Rougeaux, MSC  
The Rupright Family Fund of  
Vanguard Charitable  
John Sanger  
Daniel Sasson  
Emilie Sasson  
Schafer Family Philanthropic Fund of  
the Jewish Community Federation  
and Endowment Fund,  
recommended by Betty and  
Jack Schafer  
Andrea and Richard Scheve  
Laureen A. Schiller  
Amy L. Schioldager  
Rachel and Matthew Scholl  
Charitable Fund of Vanguard  
Charitable  
James Scopa and Anne Kenner  
Beatrix Lazard Seidenberg and  
Michael Seidenberg

Thomas and Gesine Seifert  
Elizabeth R. Shafer  
Margaret Sheehan  
The Sher-Right Fund  
Robin Silva and Tony Knudsen  
Benjamin Silver  
Sarah Jaffe Singh  
Kimberly Skiffington  
Alex Smith, JPMorgan  
Burges and Cindy Smith  
Dina and Scott Smith  
Timothy Sofo  
Solvik Family Charitable Foundation  
Craig Sosin  
James E. Spear  
Amanda Springer  
Peter Stabler  
Lauren Stinson  
Michele and Richard Stratton  
Mary Sullivan and Jeff Graham  
Mindy and Peter Sun  
Swinerton Family Fund  
Lauren and Scott Tate  
Billy and Heather Terrell  
John F. Thistleton  
Jeffrey Thompson  
Mary and Calvin Tilden  
Terence H. Tsai  
Joan Uhler  
Gary P. Van Dyk  
Skye Wanderman-Milne  
Carla Washington  
David Weil  
James Weir  
Charles Wibbelsman, M.D. and  
David A. Hyman  
Jeanne and Mike Williams  
Victoria Willock, Willock Partners  
Kathleen M. Wilson  
Steve Wissing  
Douglas Wokoun  
Susan Wright  
Jesse Zeifman  
David B. Zenoff and Janet N. Hunter  
Arthur and Charlotte Zitrin Foundation  
David and Liz Zoba  
Ben Zotto  
Argyris Zymnis and Simia Ceyhan  
Zymnis

### \$500 TO \$999

Anonymous (17)  
Paul Ackerman  
Miles Adams and Natalie Jones  
Elena Anaya  
Arik Anderson  
Chris Armstrong and Lou Dangles  
Art Athas  
Jeremy and Lourdes Avenier  
Jeffrey and Mary Baker  
Mike Beckius  
Victoria Beckner and Russell Lemle  
Rajeev Behera  
Bruce Bell  
David Bergeron  
Kevin Bixler

Ashley Boren  
Carla Botteselle  
Haley Brantley  
Patricia Breuer  
Cormac Brick  
Mark and Mary Brody  
Engin Bumbacher  
Scott and Rachel Burger  
Ron and Sydney Bushman  
James Cambron  
Barbara Carbone and Gregg Lyman  
Jonathan Carpenter  
Christopher and Kathleen Carpou  
John J. Caruso  
CB Fund  
Sheree Chambers  
Lorna Chandler  
Garna Checkley  
Martin S. Checov and Timothy J. Bause  
Anne Marie Chiramberro  
Amy Clark  
Lisa Coleman  
Sue Conley  
Joseph Cordaro  
Jeanette and James Cottle  
Debra Crandall  
Anya Cross  
Auburn Daily  
Erin and Richard Darwin  
Lynda A. Daves  
Sarah Davis  
Sandy and Cathy Dean  
Ray and Lori DePole  
John and Phoebe DiCarlo  
Mrs. Jeanne Dinkelspiel  
Patricia Swig Dinner  
Lee Dixon  
Alison F. Engel & Peter E. Engel  
Charitable Fund, an advised  
Fund of Silicon Valley  
Community Foundation  
Luisa M. Engel  
Pat English and Vicki Ono  
Conor Famulener  
Richard Farfaglia  
Rami Fasheh  
Angeli and Douglas Fitch  
Sally and Mike Fitzhugh  
Sarah G. Flanagan  
Francoise G. Fleishhacker  
Shirley and James M. Forbes  
Sarah Friar  
Matthew and Lisa Garrett  
Alison F. Geballe  
Jesse Gebhardt  
Elaine and Paul Geneviro  
Elon Ginzburg  
Deborah Godner  
Noah Goldberg and Linda Frey  
Tony and Caroline Grant  
Robert Jay Green  
Peter Gruebele  
Robin Guido  
James W. Haas  
Michael Henry  
Dennis and Anne Herrera

|  |                                     |  |                                       |                                      |  |   |   |
|--|-------------------------------------|--|---------------------------------------|--------------------------------------|--|---|---|
| Mark Hickner   | Christie Preston                    | Steve Atkinson   | Eliza Gibson                          | David Mandelkern                     | Jasper Sherman-Presser                   | Jim Bernstein                               | Craig Choffe                                |
| Dr. Charles J. Homcy Charitable Foundation           | William Primozic                    | Eva Auchincloss  | Trevor Gilmore                        | Joanne Marquez                       | Lou Ann Short                            | Maya Bibi and Isaac Muwaswes                | Jennifer Chu                                |
| Jane and Herman Howerton                             | David Pruden                        | Susan and Richard Baker-Lehne  | Michael Ginther and Jim O'Donnell     | Lawrence Marshall                    | Kelly and Edward Simpson                 | Geoffrey Biddick                            | Madelaine Chun and John Farnkopf            |
| George H. and Leslie P. Hume                         | Ramya Raghavan                      | Drew Banks   | Denis G. Gleason                      | Julia Martino                        | Angela Smith                             | Brad Birdsall                               | Caroline Clark                              |
| Cory Hunt  | Ramana Rao and Carlin Decato        | Patrick Barresi  | Peter Goetz, MFT                      | Jonathan Mayer                       | Mark Snyder                              | Deborah Birnbaum                            | Michael Clarke                              |
| Mary Huss  | Mike Ray                            | Pamela and Douglas Barry   | Gregory J. Gorman, D.C.               | Lucy S. McAllister                   | Mary and Will Spence                     | Patricia Bjorgaard                          | Peter Claude                                |
| Zachary Jarvis                                       | Roxanne Reeves                      | Andrew Bartholomew   | Raj Gossain                           | Kiesha McCurtis                      | Clare H. Springs                         | Sharon Black                                | Christine Clemons                           |
| Liz Karr-Pola and Michael Pola                       | Joe Rehmann                         | Samuel Bebbington  | Michael and Laurel Gothelf            | Scott F. McDonald                    | Yayori Takano                            | Charla Blizzard                             | Geraldine J. Clifford                       |
| Patricia Kim-Gable and Scott Gable                   | Anna Rembold and Jennifer Stephan   | Sandra Becker  | Doris W. Grau                         | Jeffrey McEwen                       | G. Anthony Talbot                        | Dian Blomquist                              | Matt Coan                                   |
| Erik King  | Maria Riley                         | Ms. Cassandra Benjamin   | Richard and Lorrie Greene             | Joe McGrath                          | Eric Temple                              | Steven Blumlein and Arlyne Charlip          | Alexander Coassin                           |
| Cole Kinney  | Sandy L. Roller                     | Alison M. Berndt   | Thomas P. Grey and Anne M. Petrides   | Brian and Jen McKillips              | Stephen Tessler                          | Erlend Bo                                   | Robert Cochran                              |
| Barbara and Steve Kirmse                             | Kristy Roos-Taylor                  | Marcus Bertrand  | Irma M. Grieve                        | Peter Michael McKinney               | Lydia Titcomb                            | Nadine Boffi                                | Daniel Cody and Elizabeth Mackenzie         |
| John Kirtland  | Danielle Rubin                      | Brook and Louis Bertuca  | Marsha and Ralph Guggenheim           | Alex McKindra                        | Michele K. Trausch and Michael Slaughter | Thomas Boggs                                | Anne Coequyt                                |
| Natalie Hatvany Kitchen and Tagan Blake              | Michael Rubinstein                  | Stephanie Blandino   | Katherine Dehart Hale                 | Annette Mello and Marcus Jager       | Laura Trupin                             | Robert Bogolub                              | Rachel Cohen                                |
| Roxy and Steve Klein                                 | Nai Saeturn                         | Mick Bobroff and Celeste Lee-Bobroff   | Laura Hardy                           | Gary Meltzer                         | John Tynefield                           | Nancy and Richard Bohannon                  | G. Bradley Cole                             |
| Gary Klintworth                                      | Pedro Sandoval                      | Kathryn Bodnar   | Dorothy Harkavy                       | Roger Miles                          | Debra and Michael Varner                 | Herbie Bohnet                               | Susan Colman and Jonathan Blanding          |
| Darren Kosinski                                      | Cathryn and Rob Schmidt             | Thomas Boerigter and Garrett Schmitt   | Christopher and Cassandra Harms       | Richard A. Miller                    | Felice Villarama                         | Richard Bollinger                           | Brenna Comacchio                            |
| Jeff and Aileen Kositsky                             | Nathalie and William Schmicker      | Chapin Boyer   | Michael Harris and Becca Foster       | William H. Miller                    | Todd Wandell                             | Adam Bosworth                               | Adrian Compa                                |
| Theresa Kretz  | William Scott                       | Annette Boynton  | Michele Harris                        | Ray Minehan                          | Lucy Wang                                | Kathryn Bowen                               | Sean Connolly                               |
| Zach and Valerie Kushel                              | Susan and Jason Scully              | George Brandt and Maureen Blanc  | Ann-Eve Hazen Family Fund             | Thomas M. Mistele                    | Christopher Wardell                      | Dione Bowers                                | Michael and Mary Connolly                   |
| Cheryl La Franchi                                    | Rod Seymore                         | Thomas G. Brock  | Dave Heater                           | Dennis Mitchell                      | Denise Wells                             | Ben Bowler                                  | Ray and Monica Conrady                      |
| Michael D. Lampen                                    | Ed Shapiro                          | Rebecca Busch  | Barbara and Hugh Hempill              | Mark Mokolke                         | Wesley and Patrick West                  | John Bowman                                 | Carla Cooper                                |
| Lance Leuthold                                       | Tom Shapiro and Madeleine Grynstejn | Lawrence Button and Stephen Leach  | Nanette M. Hendrickson                | Susan Moy                            | Dennis D. White and Lawrence Wu          | Craig Bradley                               | David Copeland                              |
| Caren and John Livengood                             | Leon and Peggy Sharyon              | Stephanie Cardenaz   | Katherine Henrickson                  | Kevin Murray                         | Kevin White                              | C. P. H. Braestrup                          | Mary Corrigan                               |
| David Lofting  | Dr. and Mrs. Stephen A. Sherwin     | Susie and John Cecchi  | Dana Hermansen                        | Laura Narron                         | Sara and Ross Wilson                     | Steven Braunstein                           | David and Kim Cotton                        |
| Susan Lowenberg and Joyce Newstat                    | Robyn and Martin Shore              | Teagan Chastain  | Jessica Hilberman                     | Ryan Nelson                          | Jeff Wofford                             | Mark Bregman                                | Erica Craven-Green and Deborah Craven-Green |
| Eileen and Carl Lund                                 | Wendy Slater                        | Mike Clark and Arlene Waksberg   | Dan Hodapp and Peggy Da Silva         | Ellen M. Newman                      | Mark Wong and Keith Phares               | A. Breingan and T. White                    | Joy R. Crosser                              |
| Timothy Lynn and Gary J. Sullivan                    | Harriet and Mitchell Sollod         | Ken Cleaveland   | Anne Hoecker and Pete Frazier         | Lindsey Newton                       | Pam Wong                                 | Ellen and Andrew Brengman                   | Joel Cruz                                   |
| Denise Macgregor-Franco                              | Lisa Spiegel                        | Janet R. Clyde   | Heather R. Hopfer                     | Ash Notaney                          | Kelly Wood                               | Leona Bridges                               | Stephen and Rocio Cuddy                     |
| Brian and Vicki Magstadt                             | Sandra Stangl                       | Joshua Cohen   | Joan Hornig                           | Gregg Novicoff                       | Alesia Woods                             | Jeffrey Briner                              | Craig Cuffie                                |
| Denise Mandell                                       | Joseph R. Collins                   | Elizabeth L. Colton  | Frank W. Horst                        | David Nudell                         | David and Jessica Zisser                 | Joseph Bromley                              | James Cunniff                               |
| Linda Martin and Ruth Allen                          | Nancy Steele                        | Maureen and David Costello   | Michael Hoy                           | Joe and Micaela Ornelas              | <b>\$100 TO \$249</b>                    | Ann and Ray Brown                           | Mark Brudos                                 |
| Sean McBride and Steven Cary                         | Jan Woodward Stevenson              | The Estate of Carey W. Craig   | Lisa Hsia                             | Sarah Orrick                         | Anonymous (67)                           | Craig Brunetti and Paul Dimitri             | Andrea Brunetti and Paul Dimitri            |
| Patricia A. McCaffrey                                | Corinne Suyeyasu                    | John M. Cranston   | Marikka Hughes                        | Chris Osborn                         | Sy Aal                                   | Bronwyn and Kevin Brunner                   | Bronwyn and Kevin Brunner                   |
| Kelly L. McCray                                      | Virginia Swanberg                   | Meredith Crawford  | Stephen D. Hutcheon                   | Scott C. Oswald                      | Norman S. Abramson and David V. Beery    | Joshua Buckler                              | Joshua Buckler                              |
| Chris McNeece  | Lyle Sweeney                        | Nina Cruz  | Beth and Eddie Jackson                | Blake Owens                          | Robert Adams                             | Natalie Burigin                             | Natalie Burigin                             |
| Alice McTighe  | Sapna Syngal                        | Stephanie and Chris Dauer  | Eric Jacoby                           | Donald A. Padilla                    | Mike Adler                               | Cindy and Christopher Burt                  | Cindy and Christopher Burt                  |
| Christopher Meehan and Mary Ann Koory                | George Tan                          | Manoj Dayaram  | Roland Jadyrev                        | Timothy Paez                         | Barbara J. Ageno                         | Catherine and Lewis Butler                  | Catherine and Lewis Butler                  |
| Purple Lady/Barbara J. Meislin Fund                  | Michelle Tandler                    | Rachel De Dora   | Terrence Bryant Jenkins               | Mark Palatucci and Katie Antypas     | Jeffrey Akeley                           | Morgan E. Byce                              | Morgan E. Byce                              |
| Matthew Melamed                                      | Scott E. and Carol L. Taylor        | Grahme Deasy   | Adam Jennison                         | Edward and Judith Parken             | Ximena Ampuero                           | Micah Bycel                                 | Micah Bycel                                 |
| Julie Metzger  | Glady Thacher/Mindful Assets        | Andrew Droog   | Julie A. Jones and Carl Espe          | Christopher H. Pederson              | Grenville Anderson                       | Julie Calacanis                             | Julie Calacanis                             |
| Eliska and Randy Meyers                              | Lois Tilles                         | Denise R. Dunning  | Nick Jones                            | Angie Penley                         | Michael Anderson                         | Mary I. Callanan                            | Mary I. Callanan                            |
| Seyedeh Anahita Mirtabatabaei                        | Mary Trombley                       | Nathaniel Durbin   | Christina and Walter Jong             | Norman Praught                       | Walter Andrews                           | Alice L. Camille                            | Alice L. Camille                            |
| Arthur J. Mischeaux                                  | Tambria Turco                       | Josh Elkes   | Catharine and John Kalin              | Charles Read                         | Michael Renteria                         | Bill and Marilyn Campbell                   | Bill and Marilyn Campbell                   |
| Richard Moore  | Anna Vilche                         | Mallory Elliott  | Niranjan Karnik                       | Alexander Renold                     | John and Tracy Richter                   | Alan Champion                               | Alan Champion                               |
| Amber Morey-Wu                                       | Thomas Waits and Kathleen Brennan   | Suzanne and Allan Epstein  | Kathryn Keating                       | Michael Renteria                     | Lester E. Robbins                        | Andrea Canavesio                            | Andrea Canavesio                            |
| Murphy Family Charitable Fund of Vanguard Charitable | Stuart West                         | Andrew Erridge   | Anne Kensok                           | David Ridley                         | Brad Roberts and Anne Marie Burgoyne     | Ray Cannon and John Sullivan                | Ray Cannon and John Sullivan                |
| Chaya Nanavati                                       | Sophia Westwood                     | Catherine Farrell and Noeleen Farrell  | Jeremy Koch                           | Lester E. Robbins                    | Drew Rocker                              | Ralph A. Carlson                            | Ralph A. Carlson                            |
| Jeff Nanney  | Kevin and Sylvia Whitman            | Jacob Feder  | Christian Koehler                     | Brad Roberts and Anne Marie Burgoyne | Terry Roller                             | Susan Carlton and Don Rowney                | Susan Carlton and Don Rowney                |
| Harman and Riva Narula                               | Anne Wilbur                         | James M.P. Feuille and Nancy J. Murray Family Foundation, a Donor Advised Fund of the U.S. Charitable Gift Trust | Frederick Koenen                      | Brad Roberts and Anne Marie Burgoyne | Jay Rosenbloom                           | Patrick C. Carroll                          | Patrick C. Carroll                          |
| Mike Naugle  | William Wynn Wong                   | Scott and Wendy Finegold   | Carole Kornblum                       | Brad Roberts and Anne Marie Burgoyne | Tanja and William Ross III               | Elaine Castillo                             | Elaine Castillo                             |
| Kenneth Newman                                       | Jillian Wood                        | Neil Fink and Phobe Rubin, Neil Fink Associates LLC  | Karl Kuhnhausen                       | Brad Roberts and Anne Marie Burgoyne | Mark J. Ruggles                          | Howard Chabner                              | Howard Chabner                              |
| Stuart and Darcie Newton                             | Ingrid Woods and Steve Cummings     | Leonard A. Fisher and Risa Teitelbaum Fund   | Seema Kumar                           | Brad Roberts and Anne Marie Burgoyne | Gregory J. Ryken                         | Evelyn Chan                                 | Evelyn Chan                                 |
| Alex and Brendan O'Connor                            | Nathaniel Wyatt and Sarah Sweedler  | Craig P. Flater and Gregory P. Brorby  | Ross LaJeunesse                       | Brad Roberts and Anne Marie Burgoyne | Tierney Sadowski                         | Susan Chandler, Ph.D.                       | Susan Chandler, Ph.D.                       |
| Rickey D. Ono  | Nathaniel Wyatt and Sarah Sweedler  | Vicki and David Fleishhacker   | Karen L. Landau                       | Brad Roberts and Anne Marie Burgoyne | David and Lillian Sage                   | Andrew Chapello                             | Andrew Chapello                             |
| Marga Ortigas-Wedekind                               | Audrey Yang                         | Scott and Wendy Finegold   | Sam Lawson and Laurel Mayer           | Brad Roberts and Anne Marie Burgoyne | Jeff Schmidt                             | Mr. Leslie Chard and Ms. Tanda Neundorf     | Mr. Leslie Chard and Ms. Tanda Neundorf     |
| Cathy Osorio   | Darryl Yee                          | Neil Fink and Phobe Rubin, Neil Fink Associates LLC  | Patton Lee                            | Brad Roberts and Anne Marie Burgoyne | Edmond Scola                             | Andrew and Renee Charnas                    | Andrew and Renee Charnas                    |
| Laurie and Lance Page                                | William and Nancy Zerella           | Leonard A. Fisher and Risa Teitelbaum Fund   | Jason Leroy                           | Brad Roberts and Anne Marie Burgoyne | David and Lillian Sage                   | Joan Chase                                  | Joan Chase                                  |
| Andrew Paxton  | T. G. Zimmerman                     | Craig P. Flater and Gregory P. Brorby  | Scott Levokove                        | Brad Roberts and Anne Marie Burgoyne | Jeff Schmidt                             | Mairin Chesney                              | Mairin Chesney                              |
| Claude Perasso                                       | Kelsey Ziomek                       | Vicki and David Fleishhacker   | Steve Lichtenberg and Betsy S. Aubrey | Brad Roberts and Anne Marie Burgoyne | Edmond Scola                             | Amber Chi                                   | Amber Chi                                   |
| Nicholas Pigott                                      | <b>\$250 TO \$499</b>               | Cynthia and Bill Floyd   | Mark Wade Lieu and Robert Kerman      | Brad Roberts and Anne Marie Burgoyne | Edmond Scola                             | Andrew and Chau-Chun Chien                  | Andrew and Chau-Chun Chien                  |
| Edward and Marcia Pollack                            | Anonymous (14)                      | Shirley and Roy Francies, Jr.  | Alice Lin                             | Brad Roberts and Anne Marie Burgoyne | Edmond Scola                             | Mr. Matt Childers and Mrs. Monique Childers | Mr. Matt Childers and Mrs. Monique Childers |
|  | Aaron Ackermann                     | Amanda and Joshua Fried  | Carol and Barry Livingston            | Brad Roberts and Anne Marie Burgoyne | Edmond Scola                             | Emily Chiswick-Patterson                    | Emily Chiswick-Patterson                    |
|  | Gary Albert                         | Kathe and Dan Friel  | Janet Luck and Stephen Kealhofer      | Brad Roberts and Anne Marie Burgoyne | Edmond Scola                             |   |   |
|  | Jeff Ares                           | Karen Getman   | Michael Luckeneder                    | Brad Roberts and Anne Marie Burgoyne | Edmond Scola                             |   |   |
|  | Barbara Arkwell                     |  | Siesel and Howard Maibach             | Brad Roberts and Anne Marie Burgoyne | Edmond Scola                             |   |   |

|                              |  |   |                                 |   |   |   |
|------------------------------|--|---|---------------------------------|---|---|---|
| David and Elaine Elms        | Mr. Paul Hartmeier                     | Mr. Ryan Klinefelter and Mrs. Devon Klinefelter | Jean L. Mar                     | Mukti Patel                                   | Megan M. Scoble                               | Charlene Tuchman                              |
| Trish English                | Andrew Hattori                         |   | Gary Marder                     | Evelyn and Higinio Paula                      | David William Scott                           | Ellen Matthews Turiel                         |
| Jane Engquist                | Michael Hauptman                       | Philip Koblis                                   | Allegra Margolis                | James R. Peck                                 | John Sears                                    | Sandra Tye                                    |
| Jason Erdahl                 | Edward Hauser                          | Mr. and Mrs. Gerald and Rosette Koch            | Natalia Maric                   | Nilotpal Pegu                                 | Mike Sebenick                                 | Mark Ulishney                                 |
| Brian and Jess Esquivel      | David C. Hawk                          | Thomas Kocon                                    | Daniel Martinez                 | Lauren Pelo                                   | Gail A. Sederski                              | Lindsay Ullman                                |
| David Etheridge              | Mark Hawk                              | Dennis and Carol Koepfel                        | Alexandra Maskell               | Chris Petteys                                 | Bruce Seidel                                  | Karen Ustin                                   |
| James and Judy Evans         | Tim Heffernan                          | Anthony Komatz                                  | Peter and Jackie Mathews        | Madeline Pevsner                              | Lew Serbin                                    | Federico Velarde                              |
| Ellen Farrell                | Steve Heitel                           | Jennifer Kopec                                  | Victoria Mathieson              | Ben Pietrzak                                  | David Shack                                   | Carlos Velarde, Jr.                           |
| Ben and Mary Feinberg        | James Hendriksen and Terisa Chaw       | Josh Kornfeld                                   | Sheila Maultsby                 | Dem Pilafian                                  | Todd Shaiman                                  | Andy Veluswami                                |
| Roland and Lois Feller       | Eric Henry                             | Jay Kosby                                       | Jennifer E. Maxwell             | Erik Pintar                                   | Rajat Sharma                                  | Jennifer A. Waggoner and David LaMacchia      |
| Rick Ferguson                | Garrett Herbert                        | Jim Kovach                                      | Rachael Maxwell                 | Susan Podolsky, M.D.                          | Shira and William Shore                       | Valencia Walker                               |
| Francine and Michael Filice  | Lauren Herrington                      | Bill and Anita Kramer                           | Kathleen McClure                | Stuart and Lee Pollak                         | Stacey and Joan Shuster-Lefkowitz             | Patricia Walo                                 |
| Catherine Fiorelli           | John W. Hicks                          | Susan A. Kreusch                                | Alan McColl                     | Randy and Cynthia Pond                        | Seth Sias                                     | Peter Walsh and James Fitzpatrick             |
| Kacey Fitzpatrick            | Thomas J. Hill                         | Venkatesh Krishnan                              | Courtney McConnell              | Michael Poplaro                               | Jack Silva                                    | Pierce Walsh                                  |
| Betsy and James Flack        | Pen-Che Ho                             | Terry Kwiatek                                   | Elizabeth A. McDonald           | Kylie Poppen                                  | Paul Silverglate                              | Michael Ward                                  |
| Madeleine Fletcher           | Peter Ho                               | Matthew and Alaina Ladner                       | Mary Louise McDonnell           | Javier Preciado                               | Jeff Sinclair                                 | Barb Watson                                   |
| Jon W. and Ellen V. Florey   | Stephanie and Rudolph Hoffman          | Craig Lahti                                     | Declan McFarland                | John Prescott                                 | Peggy Skilling and Victor Baiz                | William and Bridget Watson Payne              |
| Julio Flores                 | Gabriel Holmes                         | Daniel and Weni Lai                             | James McGough                   | Peter Prims                                   | Elizabeth Skrondal                            | Emma Starks Webb                              |
| Warren Fourie                | Bennett Hong                           | Alan Lai  | Derek M. McGreal                | Curtis Prins                                  | Sara Skvirsky                                 | Davi Weisberger and Michael J. Harrington     |
| James Fousekis               | Berkman Hong                           | Susan and Charles Lakatos                       | Peter F. McKereghan             | Laurence C. Quant                             | Deborah Smith                                 | Elizabeth and Donald Wells                    |
| Ryan Fox                     | Bevin Hong, Jr.                        | Judah Lakin and Ambri Pukhraj                   | Kelly McLaughlin                | Michael T. Rafferty                           | James B. Smith                                | Cheng Wen                                     |
| Brian Fox                    | Bevin Hong, Sr.                        | Libbie Landles-Cobb                             | Paul J. Mele                    | Shiela Rahimian                               | Benjamin Soccorso                             | David Werdegart, M.D.                         |
| Nancy Freda                  | Lorraine Honig                         | William Lang                                    | Jeffrey Mendelowitz             | Matthew Raimi                                 | Cortney Souther                               | Katie Wert and Owen Buckley                   |
| Leslie M. Freund             | Natalie Hopner                         | Jocelyn Larkin                                  | Andrew Menzer                   | Cynthia Ratusz                                | Sally Spencer, Phillip and Spencer Pollock    | Fred Weston                                   |
| Martin Froehlich             | Dan Horsfall                           | Karen Larsen                                    | Jonathon Merz                   | Aditya Ravikumar                              | Diane and Chris Spirandelli                   | Howard Weston                                 |
| Ann and John Fyfe            | Erick C. Howard                        | Katharine Lassiter                              | Charlie Michelson               | Douglas Rayner                                | Robert A. Spoor                               | John Weston                                   |
| Janet and Verlan Gabrielson  | John and Elizabeth Huey                | Matthew Lausch                                  | Anna Michnicka                  | Nancy and Alan Raznick                        | Mark Spratt                                   | Teresa White                                  |
| Daniel Galvan                | Laurie Hunter and Jonathan MacQuitty   | Juliana Lawson                                  | Howard J. and Eleanor W. Miller | Theo and Ana Razzouk                          | Jane and Richard Springwater                  | Sam Wijesekera                                |
| Sally Greer Galway           | Patricia Hunter                        | Gary Leach                                      | Leslie H. Miller                | Laura Reale                                   | Paige Squyres                                 | Kelly Wilkinson                               |
| Rory Gammell                 | Patrick L. Huston                      | James Leatham                                   | Kenneth J. Mills, M.D.          | James Redmond                                 | Diana Sroka                                   | Christy L. Williams                           |
| Lynn Garelick                | James M. Illig and Larry Dotz          | Jean S. Lee                                     | Kevin Mirsky                    | Kenneth J. Reggio                             | Patricia Stanton                              | Rick Williams                                 |
| Mr. Nicolas Gerard           | Dawn and Michael Isaacs                | Olson and Nancy Lee                             | Hamilton Mixon                  | Lawrence A. Reh                               | Nicole Steinberg                              | Danette Winkler                               |
| Jennifer Germain             | Patricia Ito                           | Talen Lee                                       | Stacy Moening                   | Jan Reicher                                   | A. William Stein                              | Randy G. Wiseman                              |
| Anne Gervolino               | Josh Jacobs                            | Tracy Lee                                       | Phillip W. Moffitt              | James Reihing                                 | Tim Stember                                   | Shane Witnov and Rachel Mackenzie             |
| Lou Gervolino                | Tamara Jansen                          | David Legnitto                                  | Elizabeth Moir                  | Albert Ren                                    | LaVon Stennis-Williams                        | Dominic Wong                                  |
| Anne Gherini                 | Jen Jewett                             | Judith Lenane                                   | Jacob Moody                     | Gregory E. Rice                               | Daniel Stevens                                | Timothy W. Wong                               |
| Edward Gibbons               | Marta S. Johnson                       | Darrell Leong                                   | Toni Moran                      | Lila and Neville Rich                         | Susan and Kevin Stone                         | Brian Wood                                    |
| Kate Gibson                  | Alan Jones                             | Jonathan Leong                                  | John Mori and Adela Tan         | Claire Richardson                             | Jeanne Stovroff                               | Monika Worsley                                |
| Mark Ginestro                | Jesse Jones                            | Alan W. Leung                                   | John Mori and Adela Tan         | Sarah Ritter                                  | Joyce and Lawrence Stupski                    | Gregory Wysocki                               |
| William Glass                | Karen Jones-Mason and Daniel Mason     | Ariel Levy                                      | Peggy L. Morrison               | Christopher Rivers                            | Greg Suhr                                     | The Honorable Carol Yaggy and Ms. Mary Twomey |
| Marianne Glutz               | Wilhelm H. Joseph, Jr.                 | Robert S. Levy                                  | Richard Morrison                | Alan J. Robin and Connie Levi                 | Paul Summers                                  | Tianlin Yang                                  |
| Dennis Goines                | Pamela Jue                             | Stephen Lewchuk                                 | Paul Morrow                     | Liz Rockett and Will Fitzpatrick              | Kim Supsinskas                                | Kelvin Yap                                    |
| Gail B. Goldman              | Hilary Jules                           | Craig Lewis                                     | Milton Mosk and Thomas Foutch   | Liz Rockett and Will Fitzpatrick              | Brianna Swanson                               | Jordan Yarmeisch                              |
| Jane Goldman                 | Michele Kahn                           | Dan Li  | Ed and Jo Marie Munnich         | Brian Rodde                                   | Sara Swenson                                  | George Yeck-Ozark                             |
| Constance and Paul Goldsmith | Nancy S. Kami                          | Hu Li   | Edward and Lisa Murphy          | Bill Rogina                                   | Chuck Szostak and Geoffrey Oshima             | Yang Li Yee                                   |
| Gordon Goode                 | Matt Kane                              | Michael Libera                                  | Mark L. Myers                   | Jessica Romm                                  | Joseph Rothrock                               | Christine Yin                                 |
| Richard Goodstein            | Aron Kantor                            | Richard Lieblich                                | Janice Myint                    | Kathleen and Kenneth Rose                     | Matthew Rude                                  | Edward Yon and Julie K. Yee                   |
| Kay Sprinkel Grace           | Karen Karlovic                         | Richard Lieblich                                | William Nadel                   | Cynthia Rosen                                 | Sarah Rudolph                                 | Shandra Yoshimi                               |
| David Gragnola               | Beth Katz                              | Ryan Lim  | Nicole R. Naidoo                | Joseph Rothrock                               | Helen Russell                                 | Helen Yu                                      |
| Francisco Gray               | Kurt Keadle                            | Ulf Lindroth                                    | Alex and Roxanne Najafi         | Matthew Rude                                  | Daniel Ruth                                   | Jay-Dee Yu-Cote                               |
| Allison Green                | Kurt Keadle                            | Charles Lindsay                                 | Alex and Roxanne Najafi         | Sarah Rudolph                                 | Geoff Ruth                                    | Joseph Yumang                                 |
| David and Lynn Green         | Gary Keibel and Kenneth Mason          | Kevin Liou                                      | Colin Nakagaki                  | Helen Russell                                 | Sharon Ruth                                   | Ingu Yun                                      |
| Becca Grossman               | Kathleen M. Keene                      | Helen Loeser and David Teitel                   | Srini Namineni                  | Daniel Ruth                                   | Davita Sampson                                | Mark S. Zelman                                |
| Rhonda Grossman              | Erin Keller                            | Harold A. Looby                                 | Ramdas Narayanan                | Geoff Ruth                                    | James and Gretchen Sandler Philanthropic Fund | Marco Zennaro                                 |
| Laura Guilbert               | Donald E. Kelley, Jr. and Susan Getman | Gina P. López, M.D.                             | Kia Wang Nevarez                | Sharon Ruth                                   | Martha Sapiro                                 | Nancy and William Zinn                        |
| Usha Gurmurthy               | Alicia Kelly                           | Robert Louie                                    | Mary Anne Nguyen                | Davita Sampson                                | David Saxe                                    | Rebecca Zucker                                |
| Jacob Gustafson              | Jodee Kepler-Sinclair                  | Cynthia Lovell                                  | Charles Noll                    | James and Gretchen Sandler Philanthropic Fund | Charles Sayle                                 | Joey Zukowski                                 |
| Dani Gwiazda                 | Brian Kerwin                           | Alex Ludlum                                     | Julia Koppman Norton            | Philanthropic Fund                            | Tom Scharffenberger and Vicki Simonds         |   |
| Sara Haber                   | Susan Kessler                          | Justin Luong                                    | Greg Nunes                      | Martha Sapiro                                 | William T. Schlough                           |   |
| Marian Halley                | Susan Ketcham and Anne Casscells       | John and Nancy Lyons                            | Robert Nurisso                  | David Saxe                                    | Sarah Schoellkopf                             |   |
| Kate Handley                 | Andrew Kim                             | Angela Maestas                                  | Dale Ogar                       | Charles Sayle                                 | Jonathan Schroder                             |   |
| Astrid Hansen                | Lynn Kirshbaum                         | Yifan Mai                                       | Kevin Olson                     | Tom Scharffenberger and Vicki Simonds         | Jonathan Schroder                             |   |
| William D. Hardie            | Andrew Klein and Katy Ferron           | Ila Malde                                       | Patsy R. Oswald                 | William T. Schlough                           | Ms. Emily Schuman                             |   |
| Sean Harris                  | Emily Klein                            | Daniel Malmer                                   | John L. Owens                   | Sarah Schoellkopf                             |   |   |
| Kelsey Harrington            | M. Kristin Klein and William Donahoe   | Dana Mandolesi                                  | Robert S. Parker                | Jonathan Schroder                             |   |   |
| Ian Hart                     | Jason Kleine                           | Holly ManieOskoi                                | Sharon Parker                   | Ms. Emily Schuman                             |   |   |
|                              |  | Mr. John Mans and Ms. Alissa Hauser             | Jennifer Parkhurst              |   |   |   |
|                              |  |   | Bijal Patel                     |   |   |   |

## CORPORATIONS AND FOUNDATIONS

### \$300,000 AND GREATER

The William and Flora Hewlett Foundation  
The Tipping Point Community

### \$100,000 TO \$299,999

Gilead Foundation  
Google Foundation of Tides Foundation  
George H. Sandy Foundation  
The Cameron Schrier Foundation

### \$50,000 TO \$99,999

The Bank of America Charitable Foundation  
The Gap Foundation  
Genentech Foundation  
Gilead Sciences  
Horace W. Goldsmith Foundation  
JPMorgan Chase Foundation  
M-A-C AIDS Fund  
Alexander M. and June L. Maisin Foundation  
Twitter, Inc.  
Wells Fargo Foundation

### \$25,000 TO \$49,999

Adobe Foundation  
Alaska Airlines  
Anonymous  
Bank of America Merrill Lynch  
Google  
The Mimi and Peter Haas Fund  
Crescent Porter Hale Foundation  
Robert Half International  
James Hardie Building Products, Inc.  
Kaiser Permanente  
LinkedIn  
Marsh & McLennan Agency  
Metta Fund  
MUFG  
Peet's Coffee & Tea  
PwC  
Bob A. Ross Foundation  
The San Francisco Foundation  
Waterwheel Foundation

### \$10,000 TO \$24,999

Airbnb  
Anonymous  
AT&T Foundation  
The Capital Group Companies Charitable Foundation  
Comerica Bank  
DBO Partners LLC  
Dodge & Cox  
EY  
First Republic Bank  
FTF Engineering, Inc.  
FusionStorm  
The William G. Gilmore Foundation  
Evelyn & Walter Haas, Jr. Fund  
Honeywell  
HP  
I & G Charitable Foundation

JPMorgan Chase & Company  
 Kenny & Company  
 KPMG LLP  
 The Kresge Foundation  
 Microsoft Corporation  
 Morgan Stanley Foundation  
 The Morrison & Foerster Foundation  
 PG&E Corporation Foundation  
 Pottery Barn  
 Recology  
 The Richmond/Ermet Aid Foundation  
 Salesforce  
 Charles Schwab Foundation  
 Spencer Stuart  
 Sustainable Grantmaking Partners  
 T. Rowe Price Foundation  
 U.S. Bank  
 Wells Fargo  
 Wilkes Bashford  
 Yoga Dana Foundation

**\$5,000 TO \$9,999**

ADP  
 AvAirPros Services, Inc.  
 Bain & Company, Inc.  
 Bee Partners  
 Crowe Horwath LLP  
 EACH Foundation  
 Electronic Arts  
 Evelyn H. Fuldner Foundation  
 Walter & Elise Haas Fund  
 The Hilltop Foundation  
 Jackson Square Partners Foundation  
 Jones Day  
 Macy's  
 Morgan Stanley Private Wealth Management  
 Nancy Boy, Inc.  
 Joseph Pedott Perpetual Endowment Trust of the Jewish Community Federation and Endowment Fund  
 Perramont Hotel  
 PwC Charitable Foundation  
 The San Francisco Giants  
 The Elizabeth Taylor AIDS Foundation  
 TPG Capital  
 Wallis Foundation  
 WNPC Foundation  
 Zynga

**\$1,000 TO \$4,999**

AAA Northern California, Nevada & Utah  
 Able Services  
 Anonymous (2)  
 Applied Materials, Inc.  
 Autodesk Foundation  
 Berkshire Hathaway HomeServices  
 Drysdale Properties  
 BlackRock Matching Gift Program  
 The Capital Group Companies Charitable Foundation Matching Gifts  
 CBRE  
 Chevron Corporation  
 Cisco Foundation

The Clorox Company  
 Flora Family Foundation  
 G2 Insurance Services / Filice Insurance  
 Genomic Health  
 Guckenheimer  
 Heat and Control, Inc.  
 Hood & Strong LLP  
 iRhythm Technologies  
 KeyBanc Capital Markets  
 The Lagunitas Brewing Company  
 Levi Strauss Foundation  
 Lockton Insurance Brokers  
 The Lookout Foundation  
 Mission Bowling Club  
 Morgan, Lewis & Bockius LLP  
 MuleSoft  
 North Peninsula Jewish Teen Foundation  
 Oracle Corporation  
 Peninsula Custom Homes  
 Pereira & O'Dell  
 Presidio Bank  
 Private Dining Room  
 Russell Reynolds Associates  
 RGP  
 Robbins Geller Rudman & Dowd LLP  
 Room & Board  
 Room at the Inn Foundation  
 San Francisco Toyota  
 Sanmina Corporation  
 Santen, Inc.  
 Shartsis Friese LLP  
 The Siegfried Group  
 Simpson Strong-Tie  
 Sobrato Family Foundation  
 Alice Phelan Sullivan Corporation  
 SunTrust Foundation  
 Technology Finance Corporation  
 Thendara Foundation  
 Thompson Builders  
 Valuation Research  
 Yelp

**\$500 TO \$999**

Farella, Braun + Martel LLP  
 FGS-Giveback Foundation  
 Look Gallery  
 Miele Experience Center  
 Pan-Med Enterprises  
 ProVisors  
 Silicon Valley Bank  
 SPMB

**\$100 TO \$499**

Alliance Data  
 Atlassian Foundation  
 Blue Shield of California Foundation  
 Campaign Monitor  
 CircleCI  
 Community Safety Foundation  
 Doc Ricketts  
 Foreign Cinema Café  
 Gary Gee Architects, Inc.  
 Lisa & Douglas Goldman Fund  
 Homes By Krista

HPE Foundation  
 Huntsman Architectural Group  
 Jackalope  
 Mainsail Partners  
 Metrowize  
 PayPal  
 Christopher S. Peacock Foundation  
 Phone Booth  
 Charles M. Salter Associates  
 Samsung Electronics America  
 San Francisco Business Times  
 Symantec  
 Tableau Foundation  
 Umpqua Bank  
 UnitedHealth Group  
 Veeva Systems  
 Williams-Sonoma, Inc.  
 ZogSports

**CIVIC AND RELIGIOUS ORGANIZATIONS**

AIDS Walk San Francisco Foundation  
 Bay Street Helping Hands  
 The Brandeis School of San Francisco  
 CA Alpha Psi/ADK  
 CalCPA  
 The California Foundation for the Advancement of the Electronic Arts  
 Communities in Collaboration  
 Community Housing Partnership  
 Community Thrift Store  
 Congresswoman Nancy Pelosi, House Democratic Leader  
 craigslist Charitable Fund  
 Episcopal Community Services  
 First Presbyterian Church of Livermore  
 Folsom Street Events  
 Girl Scouts of Northern California  
 Hotel Council of San Francisco  
 Impulse San Francisco  
 Mix, Mingle & Give  
 Old First Presbyterian Church  
 The One Love Movement  
 Positive Resource Center  
 Redwood Credit Union  
 The San Francisco Rotary Foundation  
 San Francisco AIDS Foundation  
 San Francisco Police Officers Association  
 San Francisco Symphony  
 ServiceSpace  
 The Sisters of Perpetual Indulgence  
 The Swedenborgian Church Via Yerba Buena Center for the Arts

**PUBLIC FUNDING SOURCES**

California Governor's Office of Emergency Services  
 San Francisco Department of Children, Youth and Their Families  
 San Francisco Department of Homelessness and Supportive Housing

San Francisco Department of Public Health  
 • Community Behavioral Health Services  
 • Housing and Urban Health  
 San Francisco Human Services Agency  
 San Francisco Mayor's Office of Housing and Community Development  
 San Francisco Office of Economic and Workforce Development  
 US Department of Health and Human Services  
 • Administration on Children, Youth and Families' Family and Youth Services Bureau  
 US Department of Housing and Urban Development  
 University of California, San Francisco

**LARKIN STREET SOCIETY**

Anonymous  
 Jeffrey Byers  
 Lewis Byington  
 Bill and Marilyn Campbell  
 Ray Cutino  
 Nancy and Phil Estes  
 Debbie and Blake Jorgensen  
 Catharine and John Kalin  
 Irv Lichtenwald  
 Gary L. Lomax  
 Marcus Loy  
 Leif Nielsen  
 Carla Oakley and Kevin McCarthy  
 Laura Powell and Chuck Byce  
 Rachel Randall-Jones  
 Jeanne M. Sears  
 Victoria Willock, Willock Partners  
 Mary Lou Wilson  
 David B. Zenoff and Janet N. Hunter

Larkin Street Youth Services has made every effort to list donors accurately. If you feel your name has been withheld or reported incorrectly, please contact the development office at (415) 673-0911 ext. 301.

Thank you for your support of the movement to end youth homelessness!



1. Kei'vone Reich laughs with a provider at our free medical clinic.

2. Philip Jones on his way to class.

3. Sarai Walters and Aubrey Haynes in the recording booth at our Art Studio.

4. Staff from Larkin Street pose with Supervisor Jane Kim at the Neighborhood Job Fair at our Tenderloin Headquarters.

5. Young people and staff from both Larkin Street and Alaska Airlines demonstrate their enthusiasm about Kevin Durant's visit to Larkin Street.





**GET INVOLVED**

**DONATE**

**VOLUNTEER**

**SPONSOR**

**SHARE**

134 GOLDEN GATE AVE.  
SAN FRANCISCO, CALIFORNIA  
LARKINSTREETYOUTH.ORG  
(415) 673-0911

**LARKIN  
STREET**

YOUTH SERVICES