

40th Year Edition

129th Sandwich Fair • September 7-11, 2016

J JOHNSON
SEAT & CANVAS

Sandwich Fair Times

OFFICIAL NEWSPAPER OF THE SANDWICH FAIR

Official Fair Map with Exhibitors and Attractions
Complete Schedule of Events and Activities
Volume 40 Number 1 • Nelson Publishing, Inc.

WSPY
FM 107.1

If it's canvas,
it's at
Cortland

See pages
12-13 for
more
info

Thompsons, 50 years, still going strong



Marilyn and Richard Thompson

Marilyn and Richard Thompson of Newark are celebrating their 50th wedding anniversary this year, and the Thompsons are also remembering their meeting 51 years ago in September of 1965 at the Swine Barn at the Sandwich Fair.

Marilyn Munson was a senior at Yorkville High School when fate entered her life that day at the fair in 1965.

"His [Richard's] brother was a friend of mine, and I

see **THOMPSON** page 6

Message from the President

Welcome to the 129th annual Sandwich Fair. Held in September every year since 1888. This annual fall event brings people together to show and display their many accomplishments. A wide selection of entertainment awaits you around every corner. Famous fair food aromas spread throughout the grounds to tempt your taste buds.

see **DANNEWITZ** page 5



Larry Dannewitz,
President, Sandwich
Fair Association Board

Visit SandwichFairApp.com
for the Official
Sandwich Fair App

App available by searching
"Sandwich Fairgrounds"

GET IT ON
Google play

Available on the
App Store

New Hospitality Pavilion

by Beth Butler

The Hospitality Tent, now known as the Sandwich Fair Hospitality Pavilion, is open daily from 9 a.m. to 9 p.m. The Hospitality Pavilion is across from the Round House.

What was once an area under a tent, the Hospitality Pavilion now has a permanent location at the fair, with a cement floor and a covered roof.

Wiley and Nancy Updike of Sandwich run the Hospitality

see **PAVILION** page 5

WSPY
FM 107.1

Broadcasting Live daily
from the Sandwich Fair

Halloran retires

by Jim Wyman

John Halloran retired as Superintendent of Concessions and as a member of the Sandwich Fair Board last December.

"I really felt it was time," Halloran said. "It was time for a younger person to do the job."

Halloran will be succeeded as Superintendent of Concessions by

see **HALLORAN** page 7



John Halloran

Sandwich Fair Schedule of Events

WEDNESDAY, SEPTEMBER 7 – CHILDREN FREE DAY –

Kids 12 years old and under free gate admission.
\$25 Ride Wristbands 5 p.m. to closing

All Day Open and Junior Show Judging
9:00 a.m. Flag Raising Ceremony – Round Office
9:00 a.m. Western Horse Show, Livestock area, all day
11:00 a.m. Harness Racing, Racetrack
Noon Max Armstrong, along with Back Paiges, ALS[^]
2:00 p.m. Culinary Competition – Bountiful Yeast Treats,
with Sherri Farley playing the hammered dulcimer, HABS⁺
3:15 p.m. Junior Culinary Competition – Pizza,
with Sherri Farley playing the hammered dulcimer, HABS⁺
4:00 p.m. Culinary Competition – Pasta Possibilities,
with Sherri Farley playing the hammered dulcimer, HABS⁺
5:00 p.m. Ride wristbands \$25 from 5 p.m. to closing
6:30 p.m. All American Lumberjack Show, Main Stage
7:00 p.m. – 10:00 p.m. Home Town Band, ALS[^]
7:00 p.m. – 9:00 p.m. Field Day, HABS⁺

THURSDAY, SEPTEMBER 8 – SENIOR CITIZEN BARGAIN DAY –

Senior Citizens \$6 gate admission until 5 p.m.

All Day Special Wristband Day, all day, unlimited rides for \$25
All Day Open Show Livestock Judging
11:00 a.m. Culinary Competition – Same Recipe Pumpkin Bread, HABS⁺
Noon Orion Samuelson, with Back Paiges Band, ALS[^]
12:30 p.m. Food Cooking Demo by Chef Darrel, HABS⁺
2:00 p.m. Culinary Competition, Beef Bonanza,
with Sherri Farley playing the hammered dulcimer, HABS⁺
4:00 p.m. Culinary Competition, Celebrate Chicken!,
with Sherri Farley playing the hammered dulcimer, HABS⁺
6:30 p.m. NTPA Sanctioned Truck Pulls, Pulling Track
6:30 p.m. – 8:30 p.m. Mary and The Troublemakers, HABS⁺
7:00 p.m. – 10:00 p.m. Back Paiges, ALS[^]

FRIDAY, SEPTEMBER 9 – BARGAIN DAY & ARMED FORCES DAY

Everyone admitted for \$6 until 5 p.m. People currently serving in the Military
with Military Identification admitted FREE until 5 p.m.
Ride wristbands...noon to 5 p.m....\$25

9:00 a.m. Draft Horse Show, Livestock Area Horse Arena
11:00 a.m. Culinary Competition – Chocolate Lover's Dream, HABS⁺
Noon – 5:00 p.m. Ride wristbands \$25 from noon to 5 p.m.
Noon – 1:30 p.m. WSPY Live Noon Show, featuring Max Armstrong,
Chris Schwemlein, Kevin Schramm, TD Ryan, and Cross Roads Band,
Broadcasting on WSPY FM 107.1, WSPY AM 1480, WLBK FM 98.9,
WLBK AM 1360, WCSJ FM 103.1, WCSJ AM 1550, ALS[^]
2:00 p.m. Culinary Competition – Pork Extravaganza,
with Sherri Farley playing the hammered dulcimer, HABS⁺
3:00 p.m. – 5:00 p.m. Talk of the Town Band, ALS[^]

4:00 p.m. Culinary Competition – Chili,
with Sherri Farley playing the hammered dulcimer, HABS⁺
5:00 p.m. Vintage Baseball, in the Track Infield
6:00 p.m. – 8:00 p.m. Indian Creek Band, HABS⁺
7:00 p.m. – 11:00 p.m. Road Angel, ALS[^]
8:00 p.m. Frankie Ballard, Main Stage

SATURDAY, SEPTEMBER 10

8:00 a.m. Junior Show Livestock Judging, all day
12:30 p.m. NTPA Sanctioned Tractor Pulls, Pulling Track
1:00 p.m. – 4:00 p.m. Steve Sharp, ALS[^]
2:00 p.m. Northern Illinois Outlaws–Showdown in DeKalb County,
Livestock Area Horse Arena
4:00 p.m. – 6:30 p.m. Phoenixx, HABS⁺
6:30 p.m. NTPA Sanctioned Tractor Pulls, Pulling Track
7:00 p.m. Micro-Mini Tractor Pulls, Livestock Area
7:00 p.m. – 11:00 p.m. Whiskey Romance, ALS[^]

SUNDAY, SEPTEMBER 11

8:30 a.m. Worship at the Fair, provided by area churches, HABS⁺
9:00 a.m. Junior Show Livestock Judging
10:00 a.m. 9/11 Remembrance, ALS[^]
10:00 a.m. – 4:00 p.m. Sandwich Auto Show, Racetrack Infield
Noon – 2:00 p.m. Redhorse, HABS⁺
1:00 p.m. Draft Horse Pulls, Livestock Area Horse Arena
1:00 p.m. Demolition Derby, on the track
1:00 p.m. – 4:00 p.m. Patchouli, ALS[^]
2:00 p.m. Sheep Lead Classes, Livestock Area
3:30 p.m. Demolition Derby, on the track
3:00 p.m. – 3:45 p.m. Cloggin' Craze, HABS⁺
3:00 p.m. \$15 Ride Wristbands special rate after 3 p.m.
3:00 p.m. \$6 Gate admission for everyone after 3 p.m.
HABS⁺=Home Arts Building Stage; ALS[^]=Ag Land Stage

EVERYDAY – Buttons the Clown, Banjo Buddies Dixieland Trio, Dan Barth Entertainment, Carrie McQueen – Stilt Walking and Juggling, FFA Farm Zoo, Antique Farm Machinery, Arts and Craft Demonstration, Exhibits, Rides, Displays, Food Stands, Hospitality Pavilion, Indian Valley Theatre Melodramas, Balster Magic Productions, Inc., Maggie the Milking Cow, Rob Thompson's Pure Magic, Chris Vallillo Original and Traditional Acoustic Roots Music, Fair Museum, The Moo-Mania Comedy Show, The Spoon Man, Alf's Puppets, All American Lumberjack Show

GENERAL ADMISSION PRICES

Adult \$9
Child 6-12 years old \$6
Child 5 years old or less Free

SEASON TICKET PRICES

Adult \$22
Child \$8

- ◆ Roofing Installation
- ◆ Siding Installation
- ◆ Door Installation
- ◆ Window Installation
- ◆ Gutter Guard Installation
- ◆ Soffit and Fascia Installation
- ◆ Seamless Gutter Installation

815.786.3100 • abexteriors.net

Visit Our New Showroom!



ACCREDITED BUSINESS A+ BBB Rating



Corner of Drew & Tara in Sandwich

September 11 Remembrance Ceremony



The ceremony will begin at 10 a.m. and will honor those who lost their lives in the terrorist attacks on September 11 and those who have died in the fight against terrorism. The ceremony will be held on the fifteenth anniversary of the terrorist attacks on the United States. Members of American Legion Post 181 and Veterans of Foreign Wars Post 1486, both of Sandwich, will be present at the ceremony.

Sandwich Mayor Rick Olson will give opening remarks. State Representative Tom Demmer will be the keynote speaker. Sandwich Fire Department Chief Jason Pruski and Sandwich Police Chief Jim Bianchi will also be present at the ceremony. Other local dignitaries will attend the ceremony. The ceremony will be followed by a POW MIA Ceremonial Remembrance Table.

by Beth Butler

Sunday, September 11, a 9/11 Remembrance Ceremony will be held on the Ag Land Stage.

Alfy's World of Robotic Puppets

by Beth Butler

Alfy's "World of Robotic Puppets" will return for the 129th Sandwich Fair. The life-sized puppets will entertain unsuspecting fairgoers as Alfy drives around the fair, sharing jokes and visiting. The puppets will roam the fairgrounds all week.

The robotic puppets are approximately three to four feet high. Some of the puppets featured include a horse, a pig and a

cow. Human-like puppets are also part of the show.

"At first glance our puppets look like just a stuffed animal sitting on a trike or in a car," Derek Low of Homeward Bound Theatre Company said. "Then the puppet starts driving the vehicle and talking...that is when the fun begins!"

More information about Alfy's "World of Robotic Puppets" can be found at alfypuppets.com.



129th Annual Sandwich Fair September 7-11, 2016

GATE ADMISSION PRICES

GENERAL ADMISSION

Adult \$9
Child 6-12 years old \$6
Child 5 years old or less Free

SEASON TICKETS

Adult \$22
Child \$8



Wednesday is Children Free Day for kids 12 years old or less, with free gate admission Wednesday, and ride wristbands \$25 from 5 p.m. to closing.

Thursday is Senior Citizens Bargain Day with Senior Citizens admitted for \$6 until 5 p.m., and special wristband day, with unlimited rides all day for \$25.

Friday is Bargain Day and Armed Forces Day; everyone is admitted for \$6 until 5 p.m.. Persons currently serving in the military with military identification admitted free till 5 p.m. Ride wristband \$25 from noon to 5 p.m.

Sunday Fun Day - Reduced admission to the fairgrounds; everyone is admitted for \$6 from 3 p.m. to close. Ride wristband \$15 from 3 p.m. to close.

ALL TICKETS TO INFIELD / MAIN STAGE EVENTS ARE AVAILABLE ON THE SANDWICH FAIR WEB SITE (sandwichfair.com) OR MONDAY, LABOR DAY, SEPTEMBER 5, AND TUESDAY, SEPTEMBER 6, FROM 9 A.M. - 4 P.M. AT THE MAIN GATE TICKET OFFICE.

INFIELD / MAIN STAGE ADMISSION PRICES

Wednesday, Sept. 7 • Harness Racing • FREE • 11 a.m.

Wednesday, Sept. 7 • All American Lumberjack Show • 6:30 p.m.
All seats FREE

Thursday, Sept. 8 • NTPA Truck Pulls • 6:30 p.m.

Adult Hot Seats \$20
Adult Reserved Seats \$20
Infield Seats \$20 Child Infield Seats \$5

Friday, Sept. 9 • Frankie Ballard • 8:00 p.m.

General Admission \$25

Saturday, Sept. 10 • NTPA Tractor Pulls -

Two Shows • 12:30 p.m. and 6:30 p.m.

Adult Hot Seats \$20
Reserved Seats \$20
Infield Seats \$20 Child Infield Seats \$5

Sunday, Sept. 11 • Demolition Derby -

Two Shows • 1 p.m. and 3:30 p.m.

Infield Seats \$15 Child Infield Seats \$5

The Sandwich Fair is not responsible for lost or stolen tickets. Artists subject to change. Children 12 years and younger must have a ticket for entertainment events. All sales are final. NO REFUNDS, RAIN CHECKS or EXCHANGES.

20 YEARS OF SUCCESS

**THE DESIGN,
THE BUILD,
THE SERVICE . . . WE DO IT RIGHT!**

System Design and Service • Dryers • Pneumatic Systems
Dump Pits • Bucket Elevators • Augers • Grain Bins



VFS
A&P
GRAIN SYSTEMS
888-414-2220
Maple Park, IL
www.apgrainsystems.com

ASP
Vern's
Farm Supply
815-948-2591
Hooppole, IL
www.vernsfarmsupply.com

Your Local **Sukup** Dealer

J&D Door Sales AND SERVICE INCORPORATED

EXCEPTIONAL QUALITY - TOP SERVICE



Servicing ALL
Makes and Models

Residential & Commercial
Replacement Doors
Springs - Cables
Door Openers
Keyless Entry
Semi-Custom Doors



Wood Look, Maintenance Free
Steel Doors



Free Estimates
24 Hour Emergency Service
We Work In Any Weather

Whether you are looking for residential or commercial overhead type doors, we have a complete line of wood and steel doors. Many styles and options available. Traditional Raised or Recessed Panel, Carriage House Doors, Wood Look Steel, Full Vision Glass, or Commercial Door and Openers. Full Service Garage Door Installations and Repairs.

Serving the entire WSPY listening area.

J & D Door Sales, Inc

Celebrating more than 30 Years Servicing Communities • Family Owned & Operated

800.626.6782 200 E 2nd Street Big Rock 630.556.3646

www.JD GARAGEDOORS.com

All American Lumberjack Show Makes Sandwich Fair Debut

by Beth Butler

Lumberjack Enterprises will make its debut at the Sandwich Fair at 6:30 p.m. Wednesday at the Main Stage.

Seating for what should be a popular event will be on a first come, first served basis.



The show will feature an emcee and four lumberjacks performing in thirteen different lumberjack events.

According to Jamie Fischer, founder of Lumberjack Enterprises, the events include chainsaws, axes, crosscut saws and water events.

Lumberjack Enterprises will continue to perform at the fair for the remainder of the week with multiple short shows.



The shows include Chainsaw Carving, where lumberjacks carve figures out of blocks of wood.

Kids' Interactive Camps will also take place. During the camps, professional lumberjacks will teach fairgoers of all ages how to logroll.

Lumberjack Enterprises hails from Stillwater, Minnesota and travels around the country doing events.

Jamie Fischer, the founder of the company, is a third generation logroller, who is well known in the logrolling industry. In addition to performing, he is also the largest producer of logrolling logs in the world.

"We've played a few places in Illinois and everyone talks about the Sandwich Fair," Fischer said. "We are really excited to get there and perform."

More information can be found at lumberjackenterprises.com

Sandwich Fair Times paper celebrates 40th Edition, 1977-2016

by Beth Butler

The 2016 Sandwich Fair Times marks the 40th edition of the Sandwich Fair Times, a Nelson Multimedia Inc. publication.

In January 1974 WSPY FM 107.1 Radio began broadcasting daily from the Sandwich Fair. At the time, Dutch Hough served as president of the fair, Larry and Pam Nelson discussed with Hough the need for the Sandwich Fair to have its own paper. The Sandwich Fair Times first publication was in 1977.

Each edition highlights the many features and happenings of the fair, the dedicated Sandwich Fair Association Board, and the countless

community volunteers and workers whose devotion to the fair make the Sandwich Fair the event so many of us look forward to each year.

The fair has seen countless changes, improvements and growth during the last 40 years. As dedicated board members, superintendents, volunteers and workers retire, new community members step up to continue the Sandwich Fair tradition. Congratulations to the Sandwich Fair and all associated with creating each year's event.


This year the Sandwich Fair Times paper is joined by the Sandwich Fair App – a smartphone app free for the downloading on all



Apple and Droid smartphones. It features an interactive fair map showing the location of food vendors, fair buildings, vendors with times and locations of Events.

Go to SandwichFairApp.com, the Google Play Store or the App Store and search "Sandwich Fairgrounds", or use this QR Code.






Rich Thomas

quality buildings, built by

Thomas Builders

More than 35 Years Experience

Call for a quote
815-786-6729 • 630-552-8789



Pole buildings, all types of general farm repairs, metal roofs and new construction



Expressions of Style...

Come see us at the Sandwich Fair just west of the steam train



Our Design Team will make your Cabinetry Dreams Become a Reality.

COLONIAL KITCHEN & BATH CABINETRY, INC.

Visit our showroom today!

2300 East Church Street • Sandwich
 815-786-9401 • colonialkitchen.com

2016 Sandwich Fair Association Board



Back row: Fair Directors, Scott Breunig (Parking and Police), Harold Dannewitz (Electricians), Gene Frieders (Truck & Tractor Pulls), William Haag (Parking and Police), James Webber (Caretaker), Wiley Updike (past Fair Association President), Ron Henrich (Concessions and Displays), Matt Wilson (Concessions and Displays). Front row: John Wagner (Open Grains, Seeds & Forages, Open Vegetables, Open Herbs, Hybrid Corn Show, Open Fruit Junior Grains, Seeds & Forages, Junior Vegetables, Junior Herbs, Junior Fruits, Junior Pumpkins), Larry Dannewitz (Fair Association President), Ken Tyrrell (General Livestock Superintendent) and Nancy Rex (Secretary and Fair Manager), Not pictured: Dick Delp (Open Show Swine).

OFFICERS, SUPERINTENDENTS AND ASSISTANT SUPERINTENDENTS:

Larry Dannewitz President
 Kenneth Tyrrell Vice President
 Nancy Rex Secretary and Fair Manager
 John Wagner Treasurer

Additional Directors

Scott Breunig Harold Dannewitz Gene Frieders
 Wiley Updike Ron Henrich Richard Delp
 William Haag Matthew Wilson James Webber

Superintendents, Co-Superintendents & Assistants

General Livestock Superintendent – Kenneth Tyrrell
Open Show
 Beef Cattle Matt Olson
 Dairy Cattle Mark Tuttle
 Draft Horses Philip Nielsen
 Sheep Brad Temple
 Dairy Goats LaVerne Mattson
 Swine Richard Delp
 Rabbits Mike Jackson
 Poultry Mike Crayton

Junior Show

Beef Cattle Sandi Frost
 Dairy Cattle John Tyrrell
 Sheep Al Dietz
 Dairy Goats LaVerne Mattson
 Swine Eric Hatfield
 Rabbits Carole Hartel
 Poultry Mike Crayton

General Display Building Superintendent – John Wagner

Open Show

Grains, Seeds and Forages John Wagner
 Vegetables John Wagner
 Herbs John Wagner
 Hybrid Corn John Wagner
 Fruits John Wagner
 Flowers and Plants Nancy Glover
 Needlework Bonnie Young
 Clothing Bonnie Young
 Art Pam Nelson
 Amateur Photography Becky Morphey
 Ceramics Becky Morphey
 Crafts Pam Nelson
 Collections Anne Hilliard
 Foods Pam, Penny, and Karen Monkemeyer
 Culinary Competition Cindy Akre

Junior Show

Grains, Seeds and Forages John Wagner
 Vegetables John Wagner
 Herbs John Wagner
 Fruit John Wagner
 Pumpkins John Wagner
 Plants and Flowers Cathy Meyer
 Clothing and Needlework Pam, Penny and Karen Monkemeyer
 Foods Pam, Penny and Karen Monkemeyer
 Arts and Ceramics Becky Morphey
 Amateur Photography Becky Morphey
 Crafts Diane Stahl
 Collections Anne Hilliard

Other

Tractor Pulls Gene Frieders
 Truck Pulls Gene Frieders
 Western Horse Show Carole Hilleson
 Class of Speed Jerry Dudzik
 Micro Mini Tractor Pull Dick Delp
 History Museum Joan Hardekopf
 Hospitality Pavilion Nancy Updike
 Fairground Caretaker James Webber
 Concessions and Displays Ron Henrich, Larry Dannewitz, Matthew Wilson
 Crafts and Demonstrations Eileen Weber
 Electricians Harold Dannewitz and Reed Johnson
 Entertainment Larry Dannewitz and Kim Henrich
 Ag Land Entertainment Gary Skinner
 Antique Farm Machinery Roger Peterson
 Sandwich Auto Show Tracy Rogers
 Gazebo Information, Education Karen Breunig, Jackie Dannewitz and Joan Hardekopf
 Night Crew Joe Webber
 Parking and Police Scott Breunig, William Haag
 People Movers Kenneth Tyrrell
 Sandwich Fair Historian Joan Hardekopf
 Ticket Sales Nancy Rex, Roy Walgren
 Office Manager Thomas Merkel
 Fair Data Manager Debbie Merkel
 Livestock Data Manager Kim Hoffman
 Assistant Livestock Data Manager Dianna Richards
 Web Coordinator Eileen Baird

List of Advertisers – Please support these local businesses that support the fair..

Advertiser	page number	Advertiser	page number	Advertiser	page number
1st Farm Credit Services	8	DeKalb County Farm Bureau	13	Johnson Seat & Canvas	12-13
A&B Exterior	cover	Diamond Lube 'n' Oil	14	JR Antiques and Collectibles	12
A&P Grain / Vern's Farm Supply	2	Duallyz Automotive	12	Kane County Mutual Insurance	12
Anderson's Candy	12	Dutek Hose Center	12	Katahdin Cedar Log Homes	15
Arts on Fire	13	Fay's Pork Chop Bar-B-Que	19	Kettley Realtors - Patty Tuymer	12
Augustine Bros. Painting and Decoration	14	Feece Oil Co.	12	Kingston FarMutual	8
Baker Electric	13	First National Bank- Autumn Stark	12	KKC Imaging Systems	13
Best Cutters Landscaping, Lawn Maintenance	13	Fox Valley Coins	5	Kuipers Family Farm	19
Bittersweets General Store	12	Fox Valley Hearth and Fireplace	12	Line-X	13
Boughton Material	13	Frieders Builders	12	Lyle's Automotive	12
Brenart Eye Clinic	6	Gabel Dunn Funeral Home	19	Mark D. Weinhold DDS	7
Brothers Restaurant and Lounge	13	Harner's Bakery, Restaurant, Catering	17	Mark's Auto Service	12
Christmas in the Country	8	Hill Family Fall Festival of Crafts	19	More Polish Pottery	12
Colonial Kitchen and Bath Cabinetry	3	Hueber Feed	13	Morris Trailer Sales	6
Corner Towing / Baie & Baie	13	J & D Door Sales	2	Natural Treasures	13
Countryside Veterinary Clinic	12	J.W. Well & Pump Service	13	Nelson Funeral Homes and Crematory	12
		Jim's Automotive, Complete Body-Mechanical	13	Pirate's Cay Indoor Waterpark	back page
				R&P Carriages	12
				Reiners Memorials	13
				Rick Passow - Country Financial	13
				RKA Gun Gallery / Firearm Safety Group	14
				Sandwich Fair App	9
				Superior Diesel	16
				The Brown Dog Pet Salon	13
				Thomas Builders	3
				Warren Garage Doors	7
				Winding Creek Nursery and Garden Center	16
				WLBK FM 98.9 / AM 1360	15
				WSPY 107.1 and WSPYNews.com	18
				WSPY 107.1 High School Football Broadcast	16
				WSPY Friday Noon Show - Ag Land Stage	8
				WSPY TV30 Children's Shows	18
				Wurst Kitchen Sausage Company	18
				Yellowjacket Electric and Contracting	13

2016 Sandwich Fair Times

Larry Nelson, *Publisher*
 Pam Nelson, *Executive Editor*
 Beth Pierre, *Corporate General Manager / Vice President*
 Liz Hanlon, *General Sales Manager*
 Sharon White, *Graphic Design / Layout Editor*
 Writers: **Jim Wyman** **Beth Butler**
 Sales: **Bonnie Guyer** **Tom Churchill**
Cheryl Pearre **Nick Santoria**

The Sandwich Fair Times is published annually by Nelson Publishing, Inc.. Our corporate office is at One Broadcast Center, Plano IL 60545-2100. All content is ©2016. All rights reserved. No part of this publication may be reproduced without the express written consent of the publisher. **For more information regarding this publication** call 630-552-1000 ext. 219, or send an e-mail to: Sharon.White@NelsonMultimedia.com.

To contact the Sandwich Fairgrounds Office

Call or visit:
 The Sandwich Fair Association, Inc.
 1401 Suydam Road, Sandwich IL 60548
 Phone 815-786-2159 - Fax 815-786-6242



Sandwich Historical Society collectible souvenirs

by Beth Butler

The Sandwich Historical Society will again be selling fair souvenirs, books, postcards and DVDs during the 2016 Sandwich Fair.

The Historical Society is located between Fay's BBQ and Augie Otto's Train Depot.

The Historical Society will offer a rose colored, carnival, collectible toothpick holder for \$20.

The top of the toothpick holder is trimmed with gold, and the words "Sandwich Fair 2016" are written in gold.

According to Joan Hardekopf, local historian and Sandwich Historical Society treasurer, the toothpick holder continues to be one of the most popular souvenirs



Joan Hardekopf, Sandwich Historical Society Treasurer



each year at the fair.

This year, the Historical Society will offer a white porcelain teapot for \$25. The front of the teapot has a color picture of the Home Arts Building and the words "Sandwich Fair 2016."

The back of the teapot has a paragraph about the history of the Home Arts Building. The teapot will be available in limited quantities.

The 2016 Sandwich Fair poster features a jockey in a cart during a horse race. The image has never been used on a fair poster.

The words "Sandwich Fair" are written at the top of the poster and the dates of this year's fair are at the bottom. The poster sells for \$4.

The Historical Society also has posters available from previous years.

In addition to selling Sandwich Fair souvenirs, the Historical Society offers a variety of books for sale. Historical books are available, including Hardekopf's book, "Sandwich (Images of America)."

Other books for sale are on topics such as one room schools in DeKalb and LaSalle Counties, local cemeteries, the history of DeKalb County and Chief Shabbona.



DVDs of "A Walk Down Memory Lane" are available at the fair. The DVDs, recorded annually, give detailed accounts by older, local residents about life during different time periods in the Sandwich area.

Postcards of past and current local buildings, the Gazebo and the Stone Mill Museum are for sale.

The Sandwich Historical Society trailer will be open from 9 a.m. to 9 p.m. on a daily basis. Visitors typically line up early to get souvenirs, as they often sell out.

All proceeds from the Sandwich Historical Society's sales benefit the Stone Mill Museum, located at 315 East Railroad Street in Sandwich.

The museum offers four floors full of local memorabilia. It is run by local volunteers and is open on Sundays from 1 p.m. to 4 p.m. from April-October. There is no charge of admission, and donations are always accepted.

The Sandwich Historical Society is always looking for volunteers. The group meets on the fourth Thursday of each month (except November and December) at 7 p.m. in the annex of the former Sandwich Fire Department building next to the museum.

2016 Sandwich Fair Souvenirs at Gazebo

by Vivian C. Wright, Ed.D.

Fair time is souvenir time. Fairgoers line up early at the Gazebo the first day of the Sandwich Fair to buy souvenirs for their collections and for gifts. There are several new items that will go on sale at 9 a.m. Wednesday.

This year's souvenirs commemorate a well-known building on the grounds—the Main Stage Ticket Office. Built in 1945, the site is the go-to place for tickets for the country music shows, the tractor and truck pulls, the demolition derby, and other Main Stage events.

The stoneware magnet made by Deneen Pottery, a wooden ornament and the pin, all feature the building.

A hand-painted, authentic Polish Pottery is this year's custom-made collectible; the oval dish with distinctive blue swirls is suitable for candy or for a party dip.

Another collectible is a white ceramic coffee/hot cocoa mug with ocean-blue interior.

Continuing the tradition that began in 2004, the Gazebo will sell a soft-stuffed animal designed by Glory Be. This year's animal is a cuddly pink and white pig named "Pork

Chop." A few animals from previous years will also be for sale.

Postcards and notecards with artwork by local artist Jackie Dannewitz are also available.

This year's wearables are T-shirts—short-sleeve teal and long-sleeve gray—and a zipper-front hooded sweatshirt in apple green.

All styles are in sizes S to XXXL. The gray, embroidered cap has a windmill logo and the words Sandwich Fair. The visor is black with the words Sandwich Fair.

These souvenirs may be purchased only at the Gazebo located just north of the Home Arts Building near the WSPY broadcasting tent from 9 a.m. to 9 p.m. during the fair.



Thompson

Continued from page 1

was attending the fair with a group of my school friends," Marilyn said.

"This man was standing there in the hog area, and he was wearing a show shirt that indicated he was a Thompson," Marilyn said.

Marilyn says that when she approached the man, he told her that he was her friend's brother and that the brother had gone home.

"He asked me my name. Then we saw each other a couple of times during the fair, and a year later we

were married," Marilyn said.

The Thompsons have two children, a daughter, Donna, and a son, Ed, who farms the Thompson farm in Newark.

"We have five grandchildren, and three of them live on our farm and show hogs at the Sandwich Fair," Marilyn said.

Marilyn says she grew up in the country, but knew nothing about purebred hogs.

"A lot of my friends raised

animals," Marilyn said. "But I was always a spectator."

Marilyn says she feels as if the Sandwich Fair has always been a part of her life.

"I was a member of the Yorkville Methodist Church, and our church had a permanent food stand on the fairgrounds," Marilyn said. "Once you reached seventh grade, you were allowed to work there on the weekends. We served chili, barbecue and homemade pie. The food

stand became a real gathering place," Marilyn added.

Marilyn says that she and Richard wander down to the swine barn every year.

"There are other families that are still there that were there 50 years ago," Marilyn said. "There are lots of families that come back to the Sandwich Fair every year. It's a tradition."

Do the Thompsons have any special plans for this year? "We'll be cheering for our kids!" Marilyn said.

Brenart Eye Clinic




Day, Evening and Saturday hours
 24 hour Emergency Service
 Most Insurances Accepted
 Se Habla Español

Make Your Appointment Today!

120 East Countryside Parkway
 Yorkville • 630.553.6166
BrenartEye.com

MORRIS TRAILER SALES, INC.

WWW.MORRISTRALER.COM

Midwest Premier Supplier of Trailers and Trailer Accessories



- Race Trailers
- Custom Builds
- Car Haulers - Stackers
- Multi-Car Haulers
- Living Quarters - Toterhome
- Cargo - Specialty
- Gooseneck - Tags
- Enclosed - Open

815-941-2800

1805 Ashley Rd.
Morris IL 60450

See our Exhibit at Booth 315

Antique Engine, Tractor area celebrates 50 years

The antique engine and tractor area inside the railroad tracks is celebrating 50 years at the Sandwich Fair this year.

Superintendent of Antique Farm Equipment, Trucks and Tractors Roger Peterson says that the display has grown over the 50 years.

"We take up almost the entire area within the railroad tracks," Peterson said. "Back when the display was started, the railroad was much smaller. We've filled the area up!"

Peterson says that a new feature in the antique engine area will be a blacksmith who will operate his forge inside the antique engine area this year.

In addition to the blacksmith, Peterson says a rope-maker will be returning to the antique engine area.

"The rope-maker was a big draw last year," Peterson said. "The kids loved it. They got to pick out different colored ropes and then crank the ropes."

The manufacturer of the majority of the antique engines at the fair, Sandwich Manufacturing Company, once occupied an entire city block of the city at the corner of Center and Main streets.

Peterson says that Sandwich Manufacturing built gas engines from 1856 to 1930. The



company sold out during the Great Depression to New Idea, which then used the plant to build farm implements.

Patrons of this year's Sandwich Fair will be able to see the antique engines doing numerous agricultural tasks.

The farm washing machine, a rock crusher, corn grinders and shellers, and drag saws will be on display in the area inside of Augie Otto's train tracks.

"One guy even has an ice cream maker he runs with an old gas engine," Peterson said.

Peterson says that Sandwich engines are very collectible throughout this area. "Jacob Haish engines out of DeKalb were the forerunners of the Sandwich engines," Peterson said. "One of the Haish designers came down here to Sandwich after a fire at the DeKalb plant, and that's why the Sandwich engines look like the Haishes."

Peterson says a small one and a half horse-power engine goes from a few hundred dollars to around \$1,000.

"They're one cylinder, and it's not too hard to keep them running," Peterson said.

As to finding Sandwich antique engines in barns, Peterson says it still happens, but it is getting more rare to find one.

Frankie Ballard

Main Stage, Friday night

by Beth Butler

Country music star Frankie Ballard will be the main entertainment at the Sandwich Fair when he plays the Main Stage at 8 p.m. Friday.

A native of Battle Creek, Michigan, the 33 year-old Ballard grew up with a love for music and baseball.

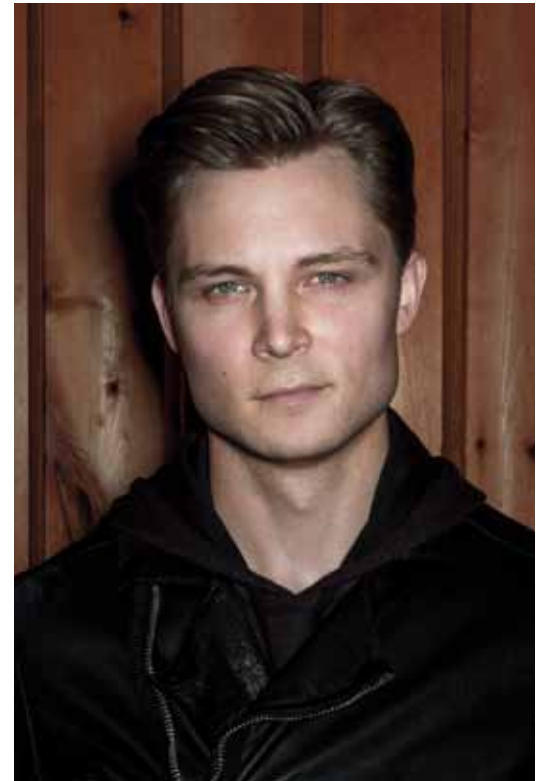
Ballard got his first guitar at age 18 and as they say, the rest is history. He started playing gigs during college at the same time he was attending Western Michigan University and playing college baseball.

In 2008, Ballard entered and won a regional competition of Kenny Chesney's "Next Big Star" contest.

The win gave Ballard the opportunity to open for Chesney in concert, so Ballard took a chance and moved to Nashville.

Ballard had the opportunity to play the Grand Ole Opry in 2011.

Ballard's songs, "Helluva Life," "Sunshine & Whiskey" and "Young & Crazy" have all hit number one on the Billboard US Country Airplay charts.



Ballard's third album, El Rio, was released this past June.

Frankie Ballard has toured with Lady Antebellum, Bob Seger, and Taylor Swift. Ballard is known for connecting with his audiences during concerts. He is sure to impress the audience at the Sandwich Fair.

More information can be found at frankieballard.com.

Halloran

Continued from page 1

Ron Henrich, with Sandwich Fair President Larry Dannewitz assisting Henrich in the transition.

Halloran took over as Superintendent of Concessions following the unexpected death of Don Bark, who passed away April 8, 2006.

"Nancy Rex called me in June of 2006 and asked me if I was going to be home for a while," Halloran said. "Pretty soon Larry Dannewitz drives up, pretty soon Wiley Updike drives up, Nancy drives up and they said to me, 'We need somebody who can do this job.'"

Halloran says that he was flying by the seat of his pants for a while as Superintendent of Concessions.

Halloran began working at the Sandwich Fair in 1972 selling tickets outside.

"Eventually I moved inside because my father-in-law worked as a money-counter inside with Jack Norling," Halloran said. "My father-in-law ended up having some health issues, and he

wasn't going to be able to do it [tickets] any more."

Halloran said that former Sandwich Fair Board member Jack Norling put Halloran through a two-hour interview before Norling put Halloran in charge of fair tickets.

"Lou Brady then nominated me for a director's position and told me about it at church," Halloran said.

Halloran says that the expansion of concessions was always a priority for Don Bark, and Halloran says he tried to continue to expand the number of concessions following Don's death.

"I can't give enough credit to Beth Swanson," Halloran said of the transition from tickets to concessions. "She worked in that office [concessions] for years and years. Beth knew what was going on."

Halloran says that the people who bring their concessions to the Sandwich Fair were wonderful and always helped him.

Halloran said he implemented a system of having the contract signed for the next year on the Sunday of the Sandwich Fair.

"You're talking about vendors who were paying a lot of money, and they would have the money on the Sunday of the fair," Halloran said.

Sandwich Fair Association President Larry Dannewitz says that Halloran was put in a tough position when he took over for Don Bark.

"John did a fantastic job improving that department and what Don Bark started," Dannewitz said. "John made the concessions job simpler."

Halloran says that now that he is retired from concessions that he will work at the United Church of Sandwich's log cabin.

"I haven't really worked at the Lions Club stand either," Halloran said. "I just never had the time."

John Halloran has worked at the Sandwich Fair for 44 years, and he's not done yet!

Do You Snore? Diagnosed with Sleep Apnea? Can't wear a CPAP?

There is another solution!
Introducing the SomnoMed MAS™
the clinically validated treatment
of snoring and mild to moderate
Obstructive Sleep Apnea (OSA)



Call today for a FREE consultation to see if SomnoMed MAS™ is right for you!

Mark D. Weinhold, D.D.S.
Gentle Family Dentistry
1 East Countyline Road, Suite A
Sandwich • 815.786.2185
sandwichdentistry.com



We cater to cowards

Time for a New Garage Door?

- Installation
- Repair
- Sales
- Doors
- Openers
- Springs
- Sections

WARREN
GARAGE DOOR

Replacement Parts
Fully Insured

Installing & Servicing
in Your Area Since 1983
CALL BRIAN PARISH
c: 630.675.4573
630.553.3573

Nelson Multimedia, Inc. stations team up to bring the...

Friday Noon Show LIVE

FRIDAY, 11:30 A.M. - 1 P.M. AT THE SANDWICH FAIR

Max Armstrong *Joins us LIVE at the Ag Land Stage, Friday on the Noon Show*



Chris Schwemlein



Kevin Schramm



TD Ryan

- Friday join Nelson Multimedia LIVE at the Ag Land stage with Chris Schwemlein, Kevin Schramm, TD Ryan and Max Armstrong with entertainment by the Crossroads Band starting at 11:30 a.m.

Wednesday, Thursday Noon Shows - LIVE at the WSPY Tent with Chris Schwemlein starting at noon

See you at the Sandwich Fair, and be sure to tune into one of our radio stations, for complete coverage.



37th Annual Christmas in the Country
ARTS AND CRAFTS SHOW
 Sandwich High School
 Sandwich Middle School
 Lynn G. Haskin Grade School
 Sandwich—S. of Rt. 34 on Wells, Lions and Dayton
Saturday, Nov. 12 • 9am-4pm
Sunday, Nov. 13 • 10am-3pm
 Lunch Served
 • Door Prizes • 150 Crafters
 \$3 Admission (Benefits the Sandwich Schools Music Association)
 Shuttle Bus Service Between Schools
 NO Strollers or Smoking Allowed in Buildings



Does your farm insurance compute?

Farming today is more complicated than ever.

Is your farm insurance policy keeping pace with your ever-changing business?

Call our office today to review your current coverages, or to receive a competitive quote on your farm insurance.

• **Roth Jorstad Insurance Agency**
 322 Liberty Street
 Morris, IL 60450
 (815) 942-4900

• **Claesson Agency**
 80 Maple Street
 Sugar Grove, IL 60554
 (630) 466-4675

• **P.A.R. Insurance Services**
 14722 S Naperville Rd, Unit 116
 Plainfield, IL 60544
 (815) 254-7900

• **Prentice Financial Services**
 37 F Stonehill Rd
 Oswego, IL 60543
 (630) 554-1612

• **N.M. Tripp Agency**
 5 N. Main Street
 Oswego, IL 60543
 (630) 554-8831

• **The First Insurance Group**
 11000 E Route 34, Suite 1
 Plano, IL 60-545
 (630) 552-3447



KINGSTON

Backed by "A" rated
 Grinnell Mutual
 Reinsurance Company

Agricultural Financing • Crop Insurance • Rural Home Loans • Appraisals • Leasing • Agribusiness and more.
 Call us today for all of your agricultural financing and crop insurance needs!



1ST FARM CREDIT SERVICES
 YOUR FIRST CHOICE

Randy Panzer
 Vice President

Jason Johnson
 Insurance Specialist

Tyler Studebaker
 Vice President

Mark Ringhouse
 Vice President

Brad Slutz
 Vice President

1350 W. Prairie Drive • Sycamore, IL 60178

(815) 756-3440 • (800) 766-3276 • www.1stfarmcredit.com

1st Farm Credit Services is an equal opportunity provider. Equal housing. Equal credit opportunity lender. Equal opportunity employer.



Visit SandwichFairApp.com
for the Official
Sandwich Fair App

Fair Map
Vendors
Schedule of Events
Contests
and more!



App available by searching
“Sandwich Fairgrounds”
on Google Play or
on the App Store.

