

Latitude 7320 Detachable

Setup and Specifications

Notes, cautions, and warnings

 **NOTE:** A NOTE indicates important information that helps you make better use of your product.

 **CAUTION:** A CAUTION indicates either potential damage to hardware or loss of data and tells you how to avoid the problem.

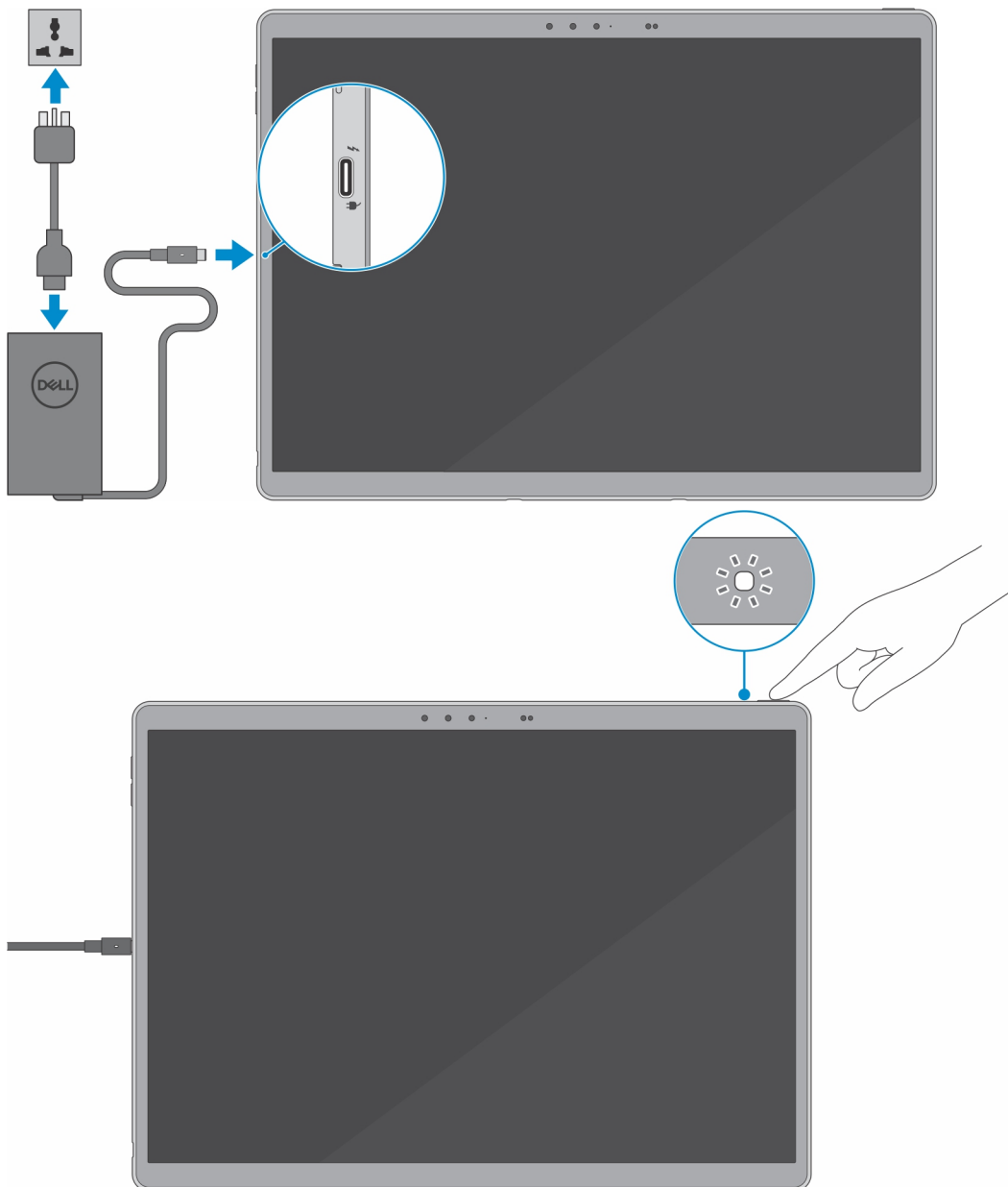
 **WARNING:** A WARNING indicates a potential for property damage, personal injury, or death.

Chapter 1: Set up your Latitude 7320 Detachable.....	4
Chapter 2: Views of Latitude 9420.....	7
Right.....	7
Left.....	7
Display.....	8
Back.....	9
Top.....	9
Bottom.....	10
Chapter 3: Keyboard shortcuts.....	11
Battery Charge and Status LED	11
Chapter 4: Specifications of Latitude 7320 Detachable.....	13
Dimensions and weight.....	13
Processor.....	14
Chipset.....	14
Operating system.....	14
Memory.....	14
External ports.....	15
Wireless module.....	15
WWAN module.....	16
Audio.....	16
Storage.....	17
Keyboard.....	17
Camera.....	17
Power adapter.....	18
Battery.....	19
Display.....	19
Fingerprint reader.....	20
GPU—Integrated.....	21
Computer environment.....	21
Sensor and control.....	21
Sensor and control specifications	22
Chapter 5: Dell low blue light display.....	23
Chapter 6: Getting help and contacting Dell.....	24

Set up your Latitude 7320 Detachable

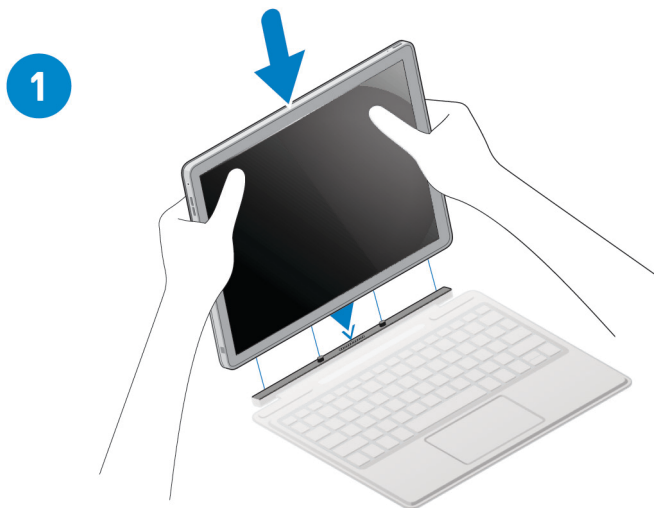
NOTE: The images in this document may differ from your computer depending on the configuration you ordered.

1. Connect the power adapter and press the power button.

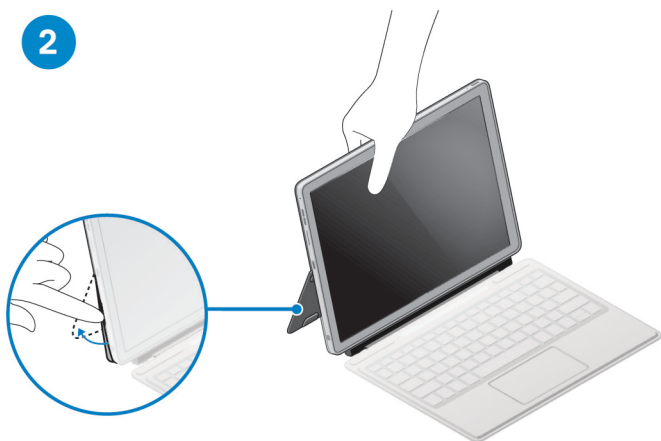


NOTE: The battery may go into power-saving mode during shipment to conserve charge on the battery. Ensure that the power adapter is connected to your computer when it is turned on for the first time.

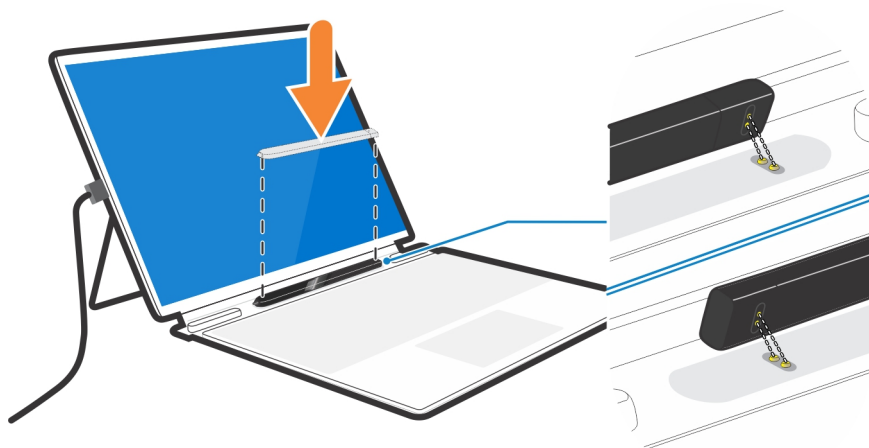
2. Connect the Latitude 7320 Detachable keyboard and deploy the kick stand.
 - a. Align the docking connectors on the Latitude 7320 Detachable, with the connectors on the Latitude 7320 Detachable keyboard.



- b. Dock the Latitude 7320 Detachable to the Latitude 7320 Detachable keyboard.
- Using your finger tips, deploy the kick stand from the recess on the computer.



3. Align the Latitude 7320 Detachable Active pen charging pins with the charging pins on the Latitude 7320 Detachable keyboard and dock it in the cradle.




i **NOTE:** The charging time for the Latitude 7320 Detachable Active pen is 30 seconds.

4. Finish Windows setup.

Follow the on-screen instructions to complete the setup. When setting up, Dell recommends that you:





- Connect to a network for Windows updates.

 **NOTE:** If connecting to a secured wireless network, enter the password for the wireless network access when prompted.

- If connected to the Internet, sign in with or create a Microsoft account. If not connected to the Internet, create an offline account.
- On the **Support and Protection** screen, enter your contact details.

5. Locate and use Dell apps from the Windows Start menu—Recommended.

Table 1. Locate Dell apps

Resources	Description
	<p>SupportAssist</p> <p>Proactively checks the health of your computer's hardware and software. The SupportAssist OS Recovery tool troubleshoots issues with the operating system. For more information, see the SupportAssist documentation at www.dell.com/support.</p> <p> NOTE: In SupportAssist, click the warranty expiry date to renew or upgrade your warranty.</p>
	<p>Dell Update</p> <p>Updates your computer with critical fixes and latest device drivers as they become available. For more information about using Dell Update, see the knowledge base article SLN305843 at www.dell.com/support.</p>
	<p>Dell Digital Delivery</p> <p>Download software applications, which are purchased but not pre-installed on your computer. For more information about using Dell Digital Delivery, see the knowledge base article 153764 at www.dell.com/support.</p>

Views of Latitude 9420

Topics:

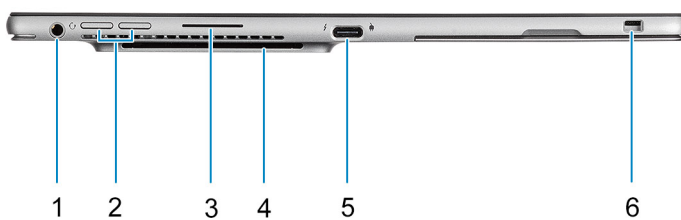
- [Right](#)
- [Left](#)
- [Display](#)
- [Back](#)
- [Top](#)
- [Bottom](#)

Right



1. USB4 Type-C ports with Thunderbolt4/PowerDelivery/DisplayPort
2. Speaker
3. Micro SIM card slot

Left



- 1. Combo Mic/Headphone Jack
- 2. Volume up/down button
- 3. Speaker
- 4. Contactless/Contacted smart card reader (optional)
- 5. USB4 Type-C ports with Thunderbolt4/Power Delivery/Display Port
- 6. Wedge-shaped lock slot

Display



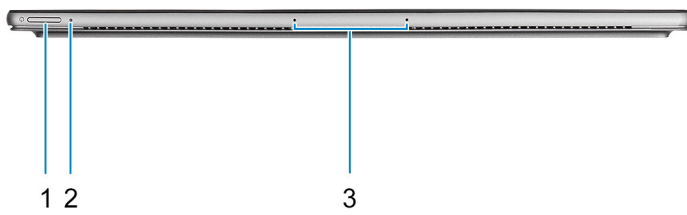
- 1. Ambient light sensor
- 2. IR emitters
- 3. IR/RGB camera
- 4. Front/rear camera status LED
- 5. Proximity sensor
- 6. LCD panel

Back



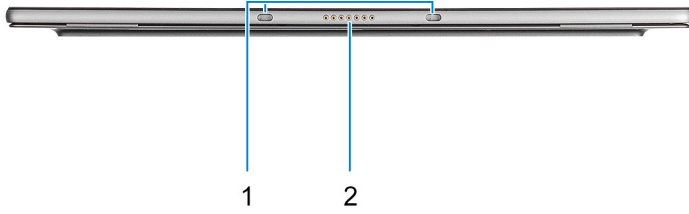
- 1. Fingerprint reader
- 2. NFC reader
- 3. Rear RGB camera
- 4. Kickstand

Top



- 1. Power button
- 2. Battery status/Diagnostics LED
- 3. Microphone

Bottom



1. Keyboard docking magnets
2. Pogo connector

Keyboard shortcuts

NOTE: Keyboard characters may differ depending on the keyboard language configuration. Keys that are used for shortcuts remain the same across all language configurations.

Table 2. List of keyboard shortcuts

Keys	Primary Behavior	Secondary Behavior (Fn + Key)
Fn + Esc	Escape	Toggle Fn-key lock
Fn + F1	Mute audio	F1 behavior
Fn + F2	Decrease volume	F2 behavior
Fn + F3	Increase volume	F3 behavior
Fn + F4	Mic Mute	F4 behavior
Fn + F5	Keyboard backlight NOTE: Not applicable for non-backlight keyboard.	F5 behavior
Fn + F6	Decrease screen brightness	F6 behavior
Fn + F7	Increase screen brightness	F7 behavior
Fn + F8	Switch to external display	F8 behavior
Fn + F9	Disable camera	F9 behavior
Fn + F10	Print Screen	F10 behavior
Fn + F11	Home	F11 behavior
Fn + F12	End	F12 behavior
Fn + Right Ctrl	Emulates right click	--

Topics:

- [Battery Charge and Status LED](#)

Battery Charge and Status LED

Table 3. Battery Charge and Status LED Indicator

Power Source	LED Behavior	System Power State	Battery Charge Level
AC Adapter	Off	S0 - S5	Fully Charged
AC Adapter	Solid White	S0 - S5	< Fully Charged
Battery	Off	S0 - S5	11-100%
Battery	Solid Amber (590+/-3 nm)	S0 - S5	< 10%

- S0 (ON) - System is turned on.
- S4 (Hibernate) - The system consumes the least power compared to all other sleep states. The system is almost at an OFF state, expect for a trickle power. The context data is written to hard drive.
- S5 (OFF) - The system is in a shutdown state.

Specifications of Latitude 7320 Detachable


Topics:

- Dimensions and weight
- Processor
- Chipset
- Operating system
- Memory
- External ports
- Wireless module
- WWAN module
- Audio
- Storage
- Keyboard
- Camera
- Power adapter
- Battery
- Display
- Fingerprint reader
- GPU—Integrated
- Computer environment
- Sensor and control
- Sensor and control specifications

Dimensions and weight

The following table lists the height, width, depth, and weight of your Latitude 7320 Detachable.

Table 4. Dimensions and weight

Description	Values
Height:	
Front height	8.44 mm (0.33 in.)
Rear height	8.44 mm (0.33 in.)
Width	288.42 mm (11.35 in.)
Depth	207.90 mm (8.18 in.)
Weight (minimum)	0.789 kg (1.7 lb)
	 NOTE: The weight of your computer depends on the configuration ordered and manufacturing variability.

Processor

The following table lists the details of the processors supported by your Latitude 7320 Detachable.

Table 5. Processor

Description	Option one	Option two	Option three	Option four
Processor type	11 th Generation Intel Core i3-1110G4	11 th Generation Intel Core i5-1130G7	11 th Generation Intel Core i5-1140G7	11 th Generation Intel Core i7-1180G7
Processor wattage	11 W	12 W	12 W	12 W
Processor core count	2	4	4	4
Processor thread count	4	8	8	8
Processor speed	1.80 GHz to 3.90 GHz	1.10 GHz to 4.00 GHz	1.10 GHz to 4.20 GHz	1.30 GHz to 4.60 GHz
Processor cache	6 MB	8 MB	8 MB	12 MB
Integrated graphics	Intel UHD Graphics	Intel Iris X ^e Graphics	Intel Iris X ^e Graphics	Intel Iris X ^e Graphics

Chipset

The following table lists the details of the chipset supported by your Latitude 7320 Detachable.

Table 6. Chipset

Description	Values
Chipset	Intel
Processor	11 th Generation Intel Core i3/i5/i7
DRAM bus width	64-bit
Flash EPROM	NA
PCIe bus	Up to Gen4

Operating system

Your Latitude 7320 Detachable supports the following operating systems:

- Windows 10 Home (64-bit)
- Windows 10 Professional (64-bit)

Memory

The following table lists the memory specifications of your Latitude 7320 Detachable.

Table 7. Memory specifications

Description	Values
Memory slots	onboard

Table 7. Memory specifications

Description	Values
Memory type	LPDDR4x
Memory speed	4267 MHz
Maximum memory configuration	16 GB
Minimum memory configuration	4 GB
Memory size per slot	4 GB, 8 GB, 16 GB
Memory configurations supported	<ul style="list-style-type: none"> ● 4 GB ● 8 GB ● 16 GB

External ports

The following table lists the external ports of your Latitude 7320 Detachable.

Table 8. External ports

Description	Values
Network port	NA
USB ports	<ul style="list-style-type: none"> ● 2 USB4 Type-C ports with Thunderbolt4/Power Delivery/Display Port
Audio port	1 Combo Mic/Headphone Jack
Video port	DisplayPort through USB4 Type-C port
Media-card reader	Micro SIM card
Power-adaptor port	USB4 Type-C
Security-cable slot	Wedge shaped Lock slot.

Wireless module

The following table lists the Wireless Local Area Network (WLAN) module supported on your Latitude 7320 Detachable.

Table 9. Wireless module specifications

Description	Values
Model number	Intel Dual Band Wireless-AX201
Transfer rate	2400 Mbps
Frequency bands supported	2.4/ 5 GHz
Wireless standards	<ul style="list-style-type: none"> ● Wi-Fi 802.11a/b/g ● Wi-Fi 4 (Wi-Fi 802.11n) ● Wi-Fi 5 (Wi-Fi 802.11ac) ● Wi-Fi 6 (Wi-Fi 802.11ax)

Table 9. Wireless module specifications

Description	Values
Encryption	<ul style="list-style-type: none"> 64-bit/128-bit WEP AES-CCMP TKIP
Bluetooth	Bluetooth 5.1

WWAN module

Table 10. WWAN module specifications

Description	Values
Model number	Qualcomm® Snapdragon™ X20 Global Gigabit LTE, CAT16
Transfer rate	Up to 867 Mbps DL/50 Mbps UL (Cat 16)
Frequency bands supported	(1/2/3/4/5/7/8/12/13/14/17/18/19/20/25/26/28/29/30/32/38/39/40/41/42/43/46/48/66), HSPA+ (1/2/4/5/6/8/9/19)
Wireless standards	Not Applicable
Encryption	Not Applicable
Bluetooth	Not Applicable

Audio

The following table lists the audio specifications of your Latitude 7320 Detachable.

Table 11. Audio specifications

Description	Values	
Audio controller	Realtek ALC711	
Stereo conversion	Supported	
Internal audio interface	Intel Soundwire	
External audio interface	Universal Audio Jack	
Number of speakers	2 Stereo speakers	
Internal-speaker amplifier	2 W average per channel	
External volume controls	through dedicated volume button	
Speaker output:		
	Average speaker output	2 W per channel
	Peak speaker output	2.5 W per channel
Subwoofer output	Not supported	

Table 11. Audio specifications

Description	Values
Microphone	2 Omni-directional Noise Canceling Microphones

Storage

This section lists the storage options on your Latitude 7320 Detachable.

Your computer supports one of the following configurations:

- One M.2 2230 solid-state drive
- One M.2 2230 PCIe/NVMe Class 35 SED

Table 12. Storage specifications

Storage type	Interface type	Capacity
M.2 2230, Class 35 SSD	Gen 3 PCIe x4 NVMe	Up to 1 TB
M.2 2230, Class 35 SED SSD	Gen 3 PCIe x4 NVMe	256 GB

Keyboard

The following table lists the keyboard specifications of your Latitude 7320 Detachable.

Table 13. Keyboard specifications

Description	Values
Keyboard type	<ul style="list-style-type: none">• Dell Latitude 7320 Detachable Travel keyboard
Keyboard layout	QWERTY
Number of keys	<ul style="list-style-type: none">• United States and Canada: 80 keys• United Kingdom: 81 keys• Japan: 84 keys
Keyboard size	X=288.42 mm (11.36 inches) Y=228.14 mm (8.98 inches)
Keyboard shortcuts	<p>Some keys on your keyboard have two symbols on them. These keys can be used to type alternate characters or to perform secondary functions. To type the alternate character, press Shift and the desired key. To perform secondary functions, press Fn and the desired key.</p> <p>NOTE: You can define the primary behavior of the function keys (F1–F12) changing Function Key Behavior in BIOS setup program.</p>

Camera

The following table lists the camera specifications of your Latitude 7320 Detachable.

Table 14. Camera specifications

Table 14. Camera specifications

Description		Values
Number of cameras		Two
Camera type		8 MP RGB Camera
Camera location		World Facing Camera
Camera sensor type		<ul style="list-style-type: none"> • CMOS sensor technology • Proximity sensor
Camera resolution:		
	Still image	8.03 megapixel
	Video	1920 x 1080 at 30 fps
Infrared camera resolution:		
	Still image	8.03 megapixel
	Video	1920 x 1080 at 30 fps
Diagonal viewing angle:		
	Camera	88.9 degrees
	Infrared camera	86.7 degrees

Power adapter

The following table lists the power adapter specifications of your Latitude 7320 Detachable.

Table 15. Power adapter specifications

Description	Option one	Option two	Option three
Type	65 W, USB Type-C	45 W, USB Type-C SFF	60 W, USB Type-C Ultra SFF
Input voltage	100 VAC–240 VAC	100 VAC–240 VAC	100 VAC–240 VAC
Input frequency	50 Hz–60 Hz	50 Hz–60 Hz	50 Hz–60 Hz
Input current (maximum)	1.70 A	1.30 A	1.60 A
Output current (continuous)	<ul style="list-style-type: none"> • 20 V/3.25 A (Continuous) • 15 V/3 A (Continuous) • 9.0 V/3 A (Continuous) • 5.0 V/3 A (Continuous) 	<ul style="list-style-type: none"> • 20 V/2.25 A (Continuous) • 15 V/3 A (Continuous) • 9.0 V/3 A (Continuous) • 5.0 V/3 A (Continuous) 	<ul style="list-style-type: none"> • 20 V/3 A (Continuous) • 15 V/3 A (Continuous) • 9.0 V/3 A (Continuous) • 5.0 V/3 A (Continuous)
Rated output voltage	<ul style="list-style-type: none"> • 20 VDC • 15 VDC • 9 VDC • 5 VDC 	<ul style="list-style-type: none"> • 20 VDC • 15 VDC • 9 VDC • 5 VDC 	<ul style="list-style-type: none"> • 20 VDC • 15 VDC • 9 VDC • 5 VDC
Temperature range:			
	Operating	0°C to 40°C (32°F to 104°F)	0°C to 40°C (32°F to 104°F)

Table 15. Power adapter specifications

Description	Option one	Option two	Option three
Storage	-40°C to 70°C (-40°F to 158°F)	-40°C to 70°C (-40°F to 158°F)	-40°C to 70°C (-40°F to 158°F)

Battery

The following table lists the battery specifications of your Latitude 7320 Detachable.

Table 16. Battery specifications

Description	Option one	Option two
Battery type	2-Cell, 40 WHr, Polymer	2-Cell, 40 WHr, Long Cycle Life, Polymer (optional)
Battery voltage	8.90 VDC	8.90 VDC
Battery weight (maximum)	0.16 kg (0.35 lb)	0.16 kg (0.35 lb)
Battery dimensions:		
Height	4.80 mm (0.188 in.)	4.80 mm (0.19 in.)
Width	81.20 mm (3.19 in.)	81.20 mm (3.19 in.)
Depth	185 mm (7.28 in.)	185 mm (7.28 in.)
Temperature range:		
Operating	0°C to 45°C (32°F to 113°F)	0°C to 45°C (32°F to 113 °F)
Storage	-20°C to 65°C (-4°F to 149°F)	-20°C to 65°C (-4°F to 149 °F)
Battery operating time	Varies depending on operating conditions and can significantly reduce under certain power-intensive conditions.	Varies depending on operating conditions and can significantly reduce under certain power-intensive conditions.
Battery charging time (approximate) i NOTE: Control the charging time, duration, start and end time, and so on using the Dell Power Manager application. For more information on the Dell Power Manager see, <i>Me and My Dell</i> on www.dell.com .	4 hours (when the computer is off) i NOTE: Control the charging time, duration, start and end time, and so on using the Dell Power Manager application. For more information on the Dell Power Manager see, <i>Me and My Dell</i> on www.dell.com/	4 hours (when the computer is off) i NOTE: Control the charging time, duration, start and end time, and so on using the Dell Power Manager application. For more information on the Dell Power Manager see, <i>Me and My Dell</i> on www.dell.com/
Coin-cell battery	Not supported	Not supported

Display

The following table lists the display specifications of your Latitude 7320 Detachable.

Table 17. Display specifications

Description	Values
Display type	Full High Definition (FHD+)

Table 17. Display specifications

Description		Values
Display-panel technology		Wide Viewing Angle (WVA)
Display-panel dimensions (active area):		
	Height	182.98 mm (7.20 in.)
	Width	274.46 mm (10.80 in.)
	Diagonal	329.86 mm (12.98 in.)
Display-panel native resolution		1920 x 1280
Luminance (typical)		500 nits
Megapixels		2.45
Color gamut		100% (sRGB)
Pixels Per Inch (PPI)		177
Contrast ratio (min)		1200:1
Response time (max)		35 ms
Refresh rate		60 Hz
Horizontal view angle		80 +/- degrees
Vertical view angle		80 +/- degrees
Pixel pitch		0.1429 x 0.1429
Power consumption (maximum)		2.63 W
Anti-glare vs glossy finish		Anti-Reflection /Anti-Smudge coating / DXC (Durable AR Coating)
Touch options		Yes

Fingerprint reader

The following table lists the fingerprint-reader specifications of your Latitude 7320 Detachable.

Table 18. Fingerprint reader specifications

Description	Values
Fingerprint-reader sensor technology	Capacitive
Fingerprint-reader sensor resolution	363 dpi
Fingerprint-reader sensor pixel size	104 x 86

GPU—Integrated

The following table lists the specifications of the integrated Graphics Processing Unit (GPU) supported by your Latitude 7320 Detachable.

Table 19. GPU—Integrated

Controller	External display support	Memory size	Processor
Intel UHD Graphics	DisplayPort through USB 3.2 Gen1 Type-C port	Shared system memory	11th Generation Intel Core i3
Intel Iris X ^e Graphics	DisplayPort through USB 3.2 Gen1 Type-C port	Shared system memory	11th Generation Intel Core i5/i7

Computer environment

Airborne contaminant level: G1 as defined by ISA-S71.04-1985

Table 20. Computer environment

Description	Operating	Storage
Temperature range	0°C to 35°C (32°F to 95°F)	-40°C to 65°C (-40°F to 149°F)
Relative humidity (maximum)	10% to 90% (non-condensing)	0% to 95% (non-condensing)
Vibration (maximum)*	0.66 GRMS	1.30 GRMS
Shock (maximum)	110 G†	160 G†
Altitude (maximum)	-15.2 m to 3048 m (4.64 ft to 5518.4 ft)	-15.2 m to 10668 m (4.64 ft to 19234.4 ft)

* Measured using a random vibration spectrum that simulates user environment.

† Measured using a 2 ms half-sine pulse when the hard drive is in use.

Sensor and control


Table 21. Sensor and control

Sensor support
Gyroscope
eCompass/Magnetometer
Accelerometer
GPS (via WWAN Card only)
Ambient Light Sensor
Adaptive Thermal Performance (via Gyroscope/Accelerometer)
Dell ExpressSign-In 1.0 (via Proximity Sensor)
Dell ExpressSign-in 2.0 (via Intel Camera Sensing Technology)
Wake/Power on with lid open

Sensor and control specifications

Hall Effect sensor is located on System board

Dell low blue light display

 **WARNING: Prolonged exposure to blue light from the display may lead to long-term effects such as eye strain, eye fatigue, or damage to the eyes.**

Blue light is a color in the light spectrum which has a short wavelength and high energy. Chronic exposure to blue light, particularly from digital sources, may disrupt sleep patterns and cause long-term effects such as eye strain, eye fatigue, or damage to the eyes.

The display on this computer is designed to minimize blue light and complies with TÜV Rheinland's requirement for low blue light displays.

Low blue light mode is enabled at the factory, so no further configuration is necessary.

To reduce the risk of eye strain, it is also recommended that you:


- Position the display at a comfortable viewing distance between 20 and 28 inches (50 and 70 cm) from your eyes.
- Blink frequently to moisten your eyes, wet your eyes with water, or apply suitable eye drops.
- Look away from your display, and gaze at a distant object at 20 ft (609.60 cm) away for at least 20 seconds during each break.
- Take an extended break for 20 minutes every two hours.

Getting help and contacting Dell

Self-help resources


You can get information and help on Dell products and services using these self-help resources:


Table 22. Self-help resources

Self-help resources	Resource location
Information about Dell products and services	www.dell.com
Tips	
Contact Support	In Windows search, type <code>Contact Support</code> , and press Enter.
Online help for operating system	www.dell.com/support/windows www.dell.com/support/linux
Troubleshooting information, user manuals, setup instructions, product specifications, technical help blogs, drivers, software updates, and so on.	www.dell.com/support
Dell knowledge base articles for a variety of computer concerns.	<ol style="list-style-type: none"> 1. Go to https://www.dell.com/support/home/?app=knowledgebase. 2. Type the subject or keyword in the Search box. 3. Click Search to retrieve the related articles.

Contacting Dell

To contact Dell for sales, technical support, or customer service issues, see www.dell.com/contactdell.

 **NOTE:** Availability varies by country and product, and some services may not be available in your country.

 **NOTE:** If you do not have an active internet connection, you can find contact information on your purchase invoice, packing slip, bill, or Dell product catalog.