

North Carolina



Medical Society

Leadership in Medicine

LEADERSHIP | EDUCATION | ADVOCACY | DISCOVERY

LEAD

HEALTH CARE CONFERENCE

OCTOBER 18-19, 2018

RALEIGH MARRIOTT CRABTREE VALLEY | RALEIGH, NC



#BeaLEADer



#NCMSLEAD



#2018LEAD



WIFI ACCESS & POSTER SESSION



WiFi access at the Raleigh Marriott Crabtree Valley brought to you by meeting sponsor Carolina Complete Health.

WiFi Password: carolinacompletehealth

Carolina Complete Health is also generously sponsoring the Annual Scientific Poster Session.

RECEPTIONS & FRIDAY LUNCH

Many thanks to Medical Mutual for sponsoring LEAD Conference receptions and Friday’s lunch during the NCMS Annual Business Meeting.



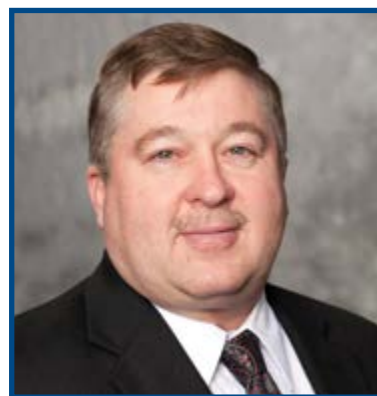
MEETING BREAKS

All meeting breaks are brought to you by LEAD Conference sponsor Smith Anderson.



- Message from the President 4
- Sponsors..... 5
- Schedule Overview 6
- Exhibitors8
- CME/CE Credit Information..... 10
- Opening Session 12
- Thursday Sessions 14
- Thursday Evening Entertainment..... 24
- Friday NCMS PAC Breakfast 25
- Scientific Poster Session..... 26
- Friday Morning Sessions 27
- NCMS Annual Business Meeting 30
- Friday Afternoon Sessions..... 32
- LEADership Reception & Dinner..... 38
- Celebrating LEADers..... 39
- Graduating Leadership College Class.....40
- Incoming 2019 Leadership College Class42
- 2018 NCMS/NCMSF Leadership44
- NCMS Foundation Donors.....45
- Hotel Map47

WELCOME
TO THE LEAD
HEALTH CARE
CONFERENCE



JOHN L. REYNOLDS, MD
2017-2018 NCMS President

On behalf of the staff and board of the North Carolina Medical Society, I would like to welcome you to the 2018 LEAD Health Care Conference. After months of careful planning, we are excited to bring this event to light and hope that you find the next couple of days to be a great mix of learning and fun.

I began my role as President of the North Carolina Medical Society just over a year ago, and it has been a challenging and fulfilling ride. This year presented important issues to tackle such as the opioid crisis and Medicaid reform. Most recently we faced the devastating effects of Hurricane Florence, which impacted many of our colleagues in the east. We remain committed to meeting the evolving needs of our physician community as they try to get back on their feet and commend them for their unwavering commitment to their patients in the midst of chaos. We look forward to bringing you more information about our Disaster Relief Program and how we are trying to assist physicians and PAs as they fix or rebuild their practices.

I encourage you to take the opportunity that the next few days present to reach out to new faces and get to know your colleagues. We have many young medical students and residents attending LEAD, and I encourage you to spend some time with these future health care leaders. Take a look at the presentations from the students and residents participating in the Scientific Poster Session on Friday or attend one of the Leadership College MEDTalks sessions to hear about the emerging medical issues in the state. Finally, make sure you take full advantage of the fun this event offers, from Thursday's reception and dinner at the Angus Barn Pavilion to Friday's reception and LEADership Dinner. Between the live music and the good food, you are bound to enjoy yourself.

Thank you for being a LEADer!

MANY THANKS
TO OUR LEAD SPONSORS

This event would not be possible without the support of a number of valued partners and organizations. Our sincerest thanks to these LEAD sponsors!

Please take a few moments during the conference to meet with these companies and to share your appreciation of their support.

PREMIER SPONSORS



GOLD SPONSOR



SILVER SPONSOR



SCHEDULE: THURSDAY

- 7:30am-5:30pm LEAD Registration Desk Open - *Hotel Lobby*
- 8:00am-12:00pm Physician Wellness Summit Breakfast and Meeting (*invitation only*) - *Creedmoor Room*
- 8:30am-12:00pm Leadership College Breakfast and Meetings (*invitation only*) - *Dogwood/Magnolia & Salons E-H*
- 9:00am-10:30am Medical Education Committee Meeting - *Braise Room*
- 10:00am-11:30am NCMS Foundation Board of Trustees Meeting - *Sycamore/Willow Room*
- 12:00pm-1:15pm **Opening Keynote Luncheon "Breakthrough to Brave"** - **JULIE ANN FREISCHLAG, MD, CEO**, Wake Forest Baptist Medical Center and Dean, Wake Forest School of Medicine - *Salons III-IV*
- 1:15pm-1:30pm Break
- 1:30pm-2:15pm Concurrent Sessions (see below)

A Model for Professional Fulfillment: The 3 Domains That Contribute to Well-Being - *Salons A-D*

- PATTY PURPUR DE VRIES, MS** - Director, Stanford Health Promotion Network; Director, Strategic Projects for the Stanford WellMD Center

MEDTalks Session 1 - *Salons E-H*

- CYNTHIA M. GARY, PA-C** - "Linking Behavioral Health Patients with Primary Care Services"
- KRISTEN M. DORSEY, MD** - "A Retrospective Look at the Impact of Medical and Dental Integration in a Rural Pediatric Clinic"

- 2:15pm-2:45pm Break in Exhibit Hall (Sponsored by Smith Anderson) - *Salons I-II*
- 2:45pm-4:15pm Concurrent Sessions (see below)

The Choosing Wisely Program: How NC Health Systems and Practices Are Reducing Costs *Salons A-D*

Panel discussion featuring:

- DON BRADLEY, MD, MHS-CL** - Associate Consulting Professor, Dept. of Community and Family Medicine, Duke University School of Medicine
- GEORGE CHEELY, MD, MBA** - Assistant Professor of Medicine and hospitalist physician at Duke University; Program Director for Care Redesign, Duke University Health System
- ELISABETH M. STAMBAUGH, MD, MMM, FACOG** - Chief Medical Officer, Cornerstone Healthcare

MEDTalks Session 2 - *Salons E-H*

- LATONYA BEATTY, MD** - "Postpartum Depression Screening at Well Child Visits: A Quality Improvement Project with a Focus on Assessing and Improving Clinic Workflow"
- ROBERT C. FRERE, MD, FAAN** - "Establishing a Comprehensive Stroke Care Service and Certification at a Large Community Hospital without Neurology Residents and Fellows"
- HELEN B. POWELL** - "Public Skin Cancer Screenings with the Polka Dot Mama Melanoma Foundation"
- BRYAN A. ZORKO, MD** - "Transportation as a Social Determinant of Health in Pitt County, NC"

- 4:15pm-4:30pm Break in Exhibit Hall (Sponsored by Smith Anderson) - *Salons I-II*
- 4:30pm-5:30pm Concurrent Sessions (see below)

Salons A-D
Innovative Wellness Models (4:30pm-5:00pm)

TED Talk-style discussion featuring:

- JASON HORAY, MS, ATC, CHES** - Health Promotion Manager, NCMS Employee Benefit Plan, Medical Mutual

- NANCY PALERMO, MD** - Owner, Thrive Center for Personalized Healthcare & Wellness
- SHEREE VODICKA, MA** - Executive Director, NC Alliance of YMCAs

I Love You Anyway - A Health Professional Journeys from Suicidal to Good Enough (5:00pm-5:30pm)

- DEBRA LAFLER, DDIV, MA** - Adjunct Instructor, Univ. of Wisconsin Health & Wellness Management

MEDTalks Session 3 - *Salons E-H*

- HEATHER L. DAVIS, DO** - "Lean In – A Journey to Improving the Safety and Quality of Care Leading to Increased Utilization of a Critical Access Hospital"
- RAJAVI S. PARIKH, DO** - "Creating a Leadership Structure Using Provider-Administrative Dyads to Lead Service Lines and Improve Patient Care and Outcomes"
- ROY E. STROWD, III, MD** - "The Navigating Medical School Program: Developing Emerging Clinician Leaders for Tomorrow by Supporting Students with Near-Peer Mentoring Today"

- 5:30pm-7:00pm Opening Reception in Exhibit Hall (Sponsored by Medical Mutual) - *Salons I-II*
- 7:00pm-10:00pm Dinner at the Angus Barn Pavilion; entertainment by The Speculations - *Shuttle service provided*

SCHEDULE: FRIDAY

- 7:00am-5:00pm LEAD Registration Desk Open - *Hotel Lobby*
- 7:00am-8:30am Breakfast in Exhibit Hall (Sponsored by Smith Anderson) - *Salons I-II*
- 7:30am-9:30am Update on Legislation Affecting Medicine: NCMS PAC Breakfast with **REP. JOSH DOBSON**; **REP. NELSON DOLLAR**; **REP. VERLA INSKO**; **REP. GREG MURPHY, MD, FACS**; and **SEN. MIKE WOODARD** (2018 PAC Membership required) - *Salons III-IV*
- 9:30am-10:30am Break in Exhibit Hall (Sponsored by Smith Anderson) - *Salons I-II*
- 9:30am-10:30am Annual Scientific Poster Session Viewing (Sponsored by Carolina Complete Health) - *Salons I-II*
- 9:30am-12:00pm Photo Studio (get more details below) - *Jasmine Room*
- 10:30am-11:45am Concurrent Sessions (see below)

Salons A-D
NC Medicaid Transformation Update (10:30am-11:15am)

- MANDY K. COHEN, MD, MPH** - Secretary, NC Department of Health and Human Services

Connecting Communities of Care via Health Information Exchange (11:15am-11:45am)

- JESSICA BREHMER, MS** - Business Development & Outreach Specialist, NC HIEA
- CHRISTIE BURRIS** - Executive Director, NC HIEA

MEDTalks Session 4 - *Salons E-H*

- ELEANOR E.W. GREENE, MD, MPH** - "Decreasing the Number of Uninsured and Increasing Access to Health Care"
- SHAUNA L. GUTHRIE, MD, MPH** - "Increasing Access to Treatment for Opioid Use Disorder in a Rural Health Department Setting"
- DARCY J. BURGARD, PA-C, MMS** - "APP Utilization, Where We Are and Where We Can Improve; Potential Solutions to Mitigate a Physician Shortage"
- MARC R. CARRUTH, MD** - "Lean Transformation in a Small Private Practice Healthcare Setting: Our Journey and Assessment of Staff Perceptions of Change"

- 12:00pm-1:30pm Lunch (Sponsored by Medical Mutual) and NCMS Annual Business Meeting (see agenda on page 30) - *Salons III-IV*
- 1:30pm-2:00pm Open Forum with NCMS Board of Directors - *Salons III-IV*
- 1:30pm-2:00pm Break in Exhibit Hall (Sponsored by Smith Anderson) - *Salons I-II*
- 2:00pm-3:15pm Concurrent Sessions (see below)

Moving to Value Based Care – Who, Why and How - *Salons A-D*

- ADRIENNE MIMS, MD, MPH, FAAFP, AGSF** - Vice President & Chief Medical Officer, Alliant Health Solutions
- DONNA COHEN, RN, BSN, CCM** - Deputy Director, Population Health, Alliant Health Solutions

MEDTalks Session 5 - *Salons E-H*

- TADHG J. O'GARA, MD and SCOTT M. PAVIOL, MD** - "Creating Space for Mindfulness in the Office"
- BABAK MOKARI, DO** - "Legitimate or Snake Oil? Physician Perspectives on Integrative Medicine Services and Products"
- ANDREW SUMICH, MD** - "The State of Medical Marijuana"

- 3:15pm-3:45pm Break in Exhibit Hall (Sponsored by Smith Anderson) - *Salons I-II*
- 3:00pm-6:00pm NC OB-GYN Society Executive Committee Meeting - *Sycamore/Willow Room*
- 3:45pm-5:00pm **Capstone Talk "Beyond Good Intentions: The Quest for Health Equity in a World of Unconscious Bias"** - **KINNEIL COLTMAN, DHA**, Vice President, Chief Diversity Officer, Atrium Health - *Salons A-D*
- 5:00pm-6:30pm LEAD Reception (Sponsored by Medical Mutual) - *Glenwood Foyer and Terrace*
- 6:30pm-10:30pm LEADership Dinner featuring the music of Russ Wilson & His Famous Orchestra - *Salons I-II*
PRE-REGISTRATION REQUIRED; cocktail attire suggested.

NCMS Photo Studio – Get a new headshot and some coffee ... on us!

Come on into the Jasmine Room on Friday between 9:30am and 12:00 noon to get a new (FREE!) professional photo for use at work or just for fun! While there, answer three simple questions for us and receive a \$5 Starbucks gift card!

THANK YOU TO OUR LEAD EXHIBITORS

Be sure to stop by the **LEAD Exhibit Hall** in **Salons I-II** on Thursday and Friday and take part in our LEAD Exhibit Hall game! Visit our wonderful meeting supporters, have them sign your entry card and turn in your completed card to the LEAD Registration Desk for your chance to win such fabulous prizes as Carolina Hurricanes hockey tickets; gift baskets from the Angus Barn, *Our State* magazine and the Wake Forest Art & Frame Shop; and more!

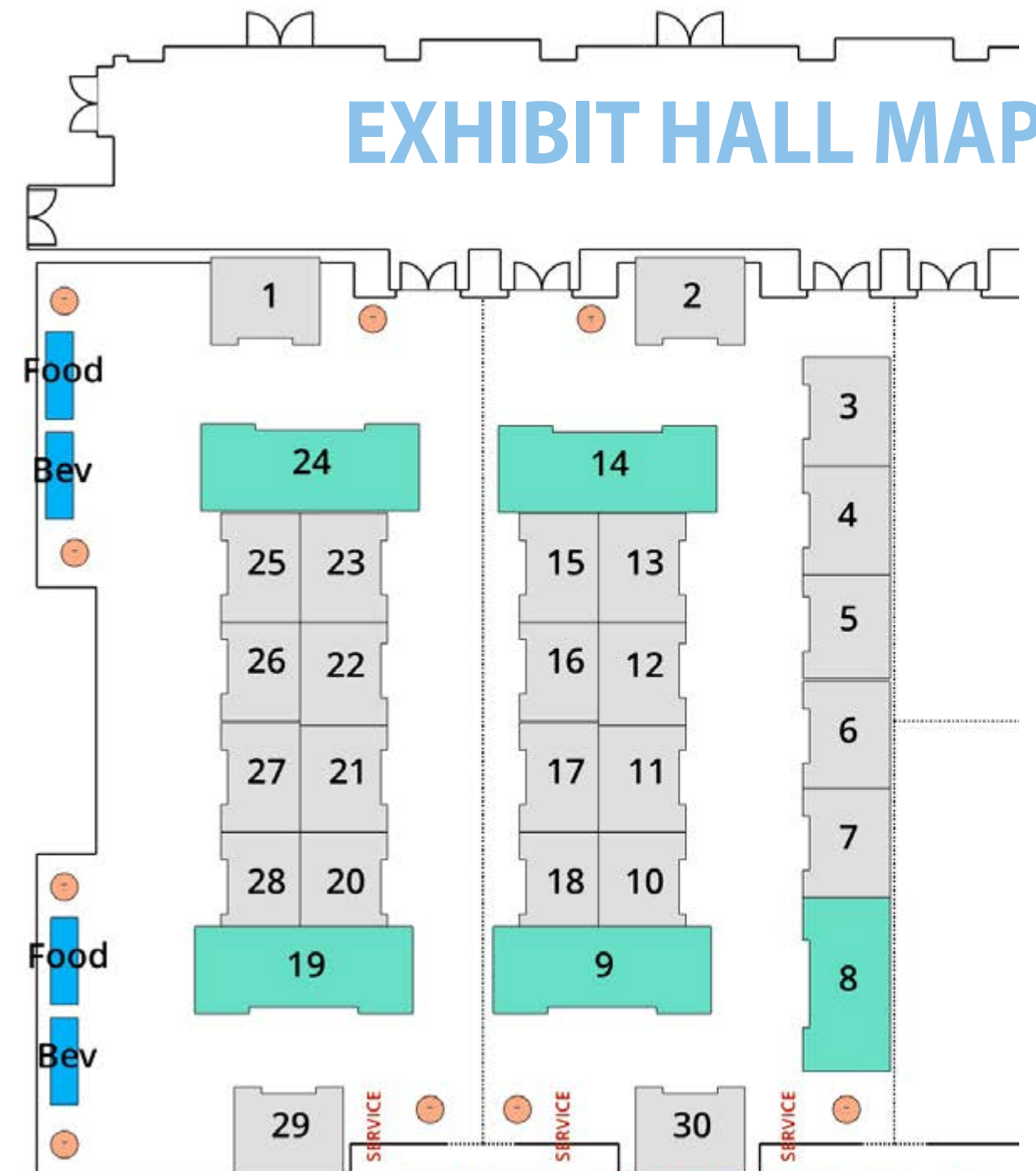
COMPANY	BOOTH
Alignment Healthcare	18
Autism Society of North Carolina	10
Bethany Medical Center/LJP Lab	4
Blaze Advisors LLC	27
Campbell University School of Osteopathic Medicine	3
Carolina Complete Health	24
Carolinas IT	26
Disability Determination Services	7
Duke University MMCi Program	6
Emtiro Health	1
IT Practice	17
Janssen, Johnson & Johnson	15
LabCorp	16
MAG Mutual*	19

* Premier Exhibitors

Companies in bold are Conference Sponsors

COMPANY	BOOTH
Medical Mutual*	14
NC Alliance of YMCAs	21
NCTracks	5
North Carolina Physicians Health Program	11
North Carolina Physicians' Retirement Strategy	13
North Carolina Society Medical Assistants (NCSMA)	12
Novo Nordisk	22
Poyner Spruill LLP*	9
Sanjoy Dasgupta, PhD	20
Shire	25
Smith Anderson	2
SunTrust	23
SurveyVitals*	8
Triangle X-Ray Co.	28

EXHIBIT HALL MAP



THANK YOU TO THE FOLLOWING LEAD SUPPORTERS FOR THEIR GIFTS IN KIND:

The Angus Barn
 Clark Gaither, MD, FAAFP
 Francine Mary Netter

Our State Magazine
 Theo Davis Printing
 Wake Forest Art & Frame Shop

CREDIT STATEMENT

AMA PRA Category 1 Credit™: 10.25 hours

The Southern Regional AHEC designates this live activity for a maximum of 10.25 AMA PRA Category 1 Credit(s)™. Physicians should claim only the credit commensurate with the extent of their participation in the activity.



Accreditation:

This activity has been planned and implemented in accordance with the Essentials and Standards of the North Carolina Medical Society (NCMS) through the joint providership of the Southern Regional AHEC and the NCMS. The Southern Regional AHEC is accredited by the NCMS to provide continuing medical education for physicians.

Additional Credit:

Other health professionals will receive Southern Regional AHEC CEU and/or contact hours and a certificate of attendance from an AMA PRA Category 1™ activity. These certificates are accepted by NC boards for physician assistants, nurse practitioners, and nurses. License requirements are subject to change. Southern Regional AHEC recommends that participants contact their licensing board with specific questions. Southern Regional AHEC will provide 1.0 Continuing Education Units (10.25 contact hours) to participants upon completion of this activity.

Please Note: Attendees may not record, photograph, or transmit presentations without explicit approval. Thank you for your cooperation.

Disclosure Statement:

Southern Regional AHEC adheres to ACCME Essential Areas and Policies regarding industry support of continuing medical education. All those in a position to control content have disclosed and there are no unresolved conflicts prior to this program. A listing of all disclosures may be found below. There will be no discussion of off-label, experimental, or investigational use of drugs or devices in some presentations. There is no commercial support provided for this activity.

Speaker and Planning Committee Disclosures:

All speakers and planning committee members have nothing to disclose.

ACCESSING THE ONLINE CME EVALUATION

For physicians and PAs – How to Access Evaluation and Receive Your Acknowledgment of Attendance:

Access the “LEAD Conference - NC Medical Society 2018 Annual Meeting” evaluation from www.southernregionalahec.org.

1. Click on the three black bars in the white space at the top of the page. A new menu will appear on the left; click on the arrow to the right of the heading “EDUCATION ACCESS”; this will bring up another menu.
2. Click the bottom link “MYCE LOG-IN”.
3. Enter the following: your last name, last four digits of your Social Security number and home or office zip code. Click “Login” and fill out the evaluation.

Evaluations will be live on Wednesday, October 24, 2018, after 5pm. Please complete your evaluation by Wednesday, October 31, 2018.

Thursday, October 18
1:30pm-2:15pm
Salons A-D

Thursday, October 18
1:30pm-2:15pm
Salons E-H

A MODEL FOR PROFESSIONAL FULFILLMENT:

THE 3 DOMAINS THAT CONTRIBUTE TO WELL-BEING

During this session, Ms. de Vries will share Stanford's wellness model that focuses on three important areas to reduce burnout.



PATTY PURPUR DE VRIES, MS

Director of Strategic Projects,
Stanford Medicine WellMD Center;
Director, Stanford Health Promotion Network

NOTES

.....

.....

.....

.....

.....

.....

.....

.....

.....

.....

.....

.....

.....

.....

.....

.....

.....

.....

.....

.....

.....

.....

.....

MEDTALKS SESSION 1

The Kanof Institute for Physician Leadership (KIPL) Leadership College Program is a project-based, nationally recognized leadership development course specifically designed for physicians and physician assistants. Annually the current class scholars present a brief "MEDTalk" describing their project for the course.



CYNTHIA M. GARY, PA-C
Johnston County Health Department,
Smithfield, NC

LINKING BEHAVIORAL HEALTH PATIENTS WITH PRIMARY CARE SERVICES

NOTES

.....

.....

.....

.....

.....



KRISTEN M. DORSEY, MD
Rural Health Group,
Roanoke Rapids, NC

A RETROSPECTIVE LOOK AT THE IMPACT OF MEDICAL & DENTAL INTEGRATION IN A RURAL PEDIATRIC CLINIC

NOTES

.....

.....

.....

.....

.....

Thursday, October 18
2:45pm-4:15pm
Salons E-H

MEDTALKS SESSION 2



POSTPARTUM DEPRESSION SCREENING AT WELL-CHILD VISITS: A QUALITY IMPROVEMENT PROJECT WITH A FOCUS ON ASSESSING AND IMPROVING CLINIC WORKFLOW

NOTES

LATONYA BEATTY, MD
New Hanover Regional Medical Center,
Wilmington, NC

.....

.....

.....

.....

.....

.....



ESTABLISHING A COMPREHENSIVE STROKE CARE SERVICE & CERTIFICATION AT A LARGE COMMUNITY HOSPITAL WITHOUT NEUROLOGY RESIDENTS AND FELLOWS

NOTES

ROBERT C. FRERE, MD, FAAN
ECU Neurology, Greenville, NC

.....

.....

.....

.....

.....

.....

.....

.....

.....

.....



PUBLIC SKIN CANCER SCREENINGS WITH THE POLKA DOT MAMA MELANOMA FOUNDATION

NOTES

HELEN POWELL
Student, UNC School of Medicine,
Chapel Hill, NC

.....

.....

.....

.....

.....

.....



TRANSPORTATION AS A SOCIAL DETERMINANT OF HEALTH IN PITT COUNTY, NC

NOTES

BRYAN A. ZORKO, MD
ECU at VMC Emergency Medicine/Internal
Medicine Residency, Greenville, NC

.....

.....

.....

.....

.....

.....

.....

.....

.....

.....

Thursday, October 18
Part I: 4:30pm-5:00pm
Salons A-D

PANEL DISCUSSION

INNOVATIVE WELLNESS MODELS

In the first half of this session, learn more about new wellness models in these TEDTalk-style discussions that are motivating employees to improve their health; providing a holistic approach to health care that focuses on the mind, body, and soul of patients; and addressing social determinants of health to improve lives.



JASON HORAY, MS, ATC, CHES
Health Promotion Manager,
NCMS Employee Benefit Plan,
Medical Mutual Insurance Co.



NANCY PALERMO, MD
Owner, Thrive Center for
Personalized Healthcare & Wellness



SHEREE VODICKA, MA
Executive Director,
NC Alliance of YMCAs

Part II: 5:00pm-5:30pm
Salons A-D

I LOVE YOU ANYWAY

A HEALTH PROFESSIONAL JOURNEYS FROM SUICIDAL TO GOOD ENOUGH

Hear the moving, personal story of Debra Lafler, a health professional feeling trapped in the whirlwind of not feeling “good enough,” and the lessons she learned in the process of self-discovery.



DEBRA LAFLER, DDiv, MA
Adjunct Instructor, University
of Wisconsin Health & Wellness
Management

I LOVE YOU ANYWAY – WORKSHEET

DEBRA LAFLER | Personal Wellness Development | deblafler@gmail.com

1. Write down your “not good enough” list. What standards, rules, or “shoulds” do you fear (or feel anxiety about) that you are not living up to? (These would be things according to your parents, teachers, schools, profession, society, family, friends, coworkers, etc.)

.....
.....
.....

2. What makes you, YOU? If your body got injured or disabled (or if you really didn’t have much of a body left), who are YOU? Name some of your positive characteristics, traits, abilities, etc. How might a loved one describe you?

.....
.....
.....

3. What fosters your human spirit? What are your values (meaning, what do you value or feel that is important to you)? What gives your life a sense of meaning or purpose?

.....
.....
.....

4. You ARE the author of your own story. Clean slate from here on out. Write some ideas of what you’d like to do from here on out. Who do you want to be? What would you like to experience?

.....
.....
.....

Thursday, October 18
4:30pm-5:30pm
Salons E-H

MEDTALKS SESSION 3



LEAN IN - A JOURNEY TO IMPROVING THE SAFETY AND QUALITY OF CARE LEADING TO INCREASED UTILIZATION OF A CRITICAL ACCESS HOSPITAL

NOTES

.....
.....
.....
.....
.....

HEATHER L. DAVIS, DO
NHRMC/Pender Memorial Hospital,
Wilmington, NC



CREATING A LEADERSHIP STRUCTURE USING PROVIDER-ADMINISTRATIVE DYADS TO LEAD SERVICE LINES AND IMPROVE PATIENT CARE AND OUTCOMES

NOTES

.....
.....
.....
.....
.....
.....
.....

RAJAVI S. PARIKH, DO
New Hanover Regional Medical Center,
Wilmington, NC



THE NAVIGATING MEDICAL SCHOOL PROGRAM: DEVELOPING EMERGING CLINICIAN LEADERS FOR TOMORROW BY SUPPORTING STUDENTS WITH NEAR-PEER MENTORING TODAY

ROY E. STROWD, III, MD
Wake Forest Baptist Medical Center,
Winston-Salem, NC

NOTES

.....
.....
.....
.....
.....
.....
.....
.....
.....
.....
.....
.....
.....
.....
.....
.....
.....
.....
.....
.....
.....

Thursday, October 18
5:30pm-7:00pm
Salons I-II

OPENING RECEPTION



The fun begins at 5:30pm, where you can mix and mingle with your colleagues and spend some time wandering through the Exhibit Hall (check out page 8 to see which vendors will be in attendance). After an afternoon of inspiring sessions, don't miss this casual networking opportunity.



Thursday, October 18
7:00pm-10:00pm
Shuttle service provided

DINNER AT THE ANGUS BARN PAVILION

After the Opening Reception, we'll gather in the lobby of the Marriott and then head out on NCMS-provided transportation, traveling just a few miles down the road to the Angus Barn, Raleigh's renowned steakhouse. We're taking over the outdoor Pavilion for the evening where we can enjoy a fabulous buffet and the music of The Speculations, a band of musicians who not only share a love of the Eagles and Rush, but a passion for health care and philanthropy. All members of the band are medical professionals, and they donate proceeds of their gigs to many local non-profits.



PANEL DISCUSSION

Friday, October 19
7:30am-9:30am
Salons III-IV

UPDATE ON LEGISLATION AFFECTING HEALTH CARE

Be sure to attend this panel discussion featuring state legislators who will sum up the current legislation that's impacting health care and then share their thoughts as to what the November elections may bring. (2018 NCMS PAC membership required; donations may be made at the door.)



REP. JOSH DOBSON
R - Dist. 85
(Avery, McDowell, Mitchell)



REP. NELSON DOLLAR
R - Dist. 36 (Wake)



REP. VERLA INSKO
D - Dist. 56 (Orange)



REP. GREG MURPHY, MD, FACS
R - Dist. 9 (Pitt)



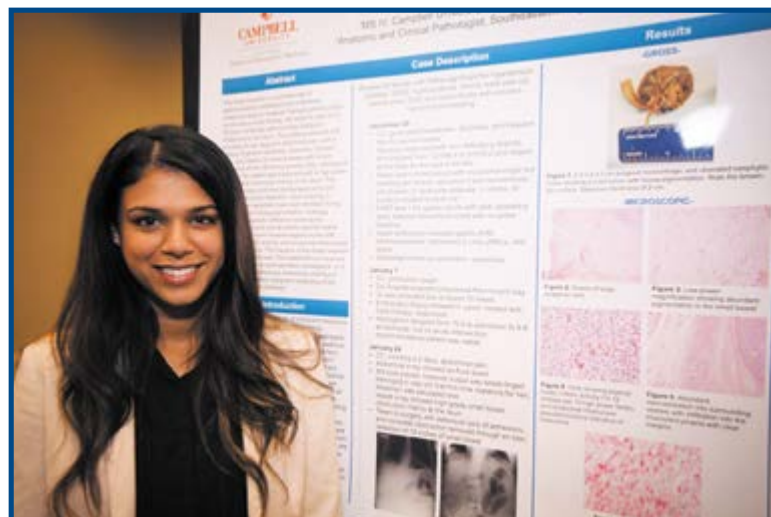
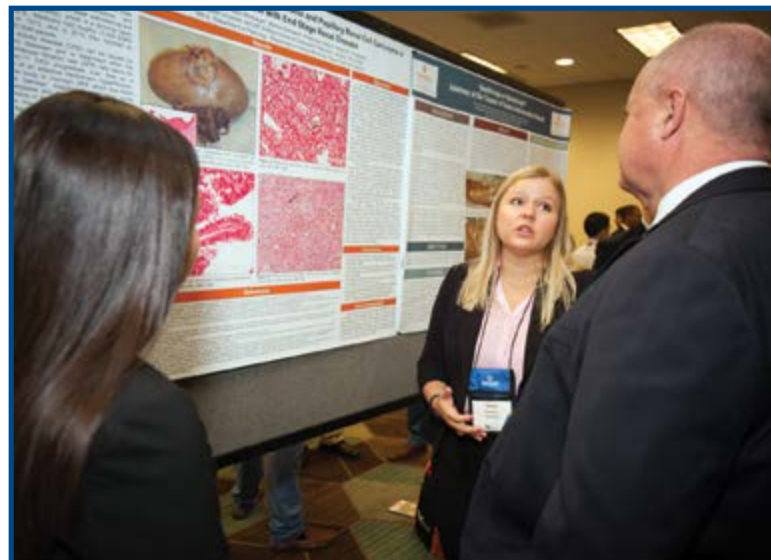
SEN. MIKE WOODARD
D - Dist. 22
(Caswell, Durham, Person)

Friday, October 19
9:30am-10:30am
Salons I-II

Be sure to stop by the Exhibit Hall on Friday morning to review the 37 Scientific Poster Session entries on display that are competing for great prizes (and bragging rights!). The best and brightest medical students and residents from around the state will have their latest research and clinical cases on display to be judged by our expert panel of NCMS member physicians and PAs. Take a look at the work of future health care leaders!

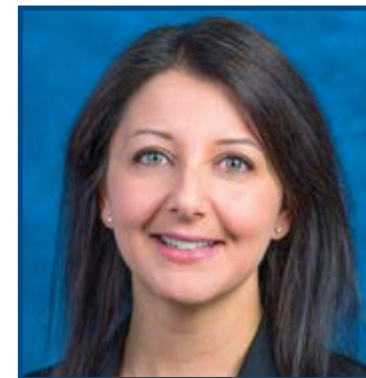
Many thanks to our panel of judges:

- EILEEN RAYNOR, MD, FACS**
Poster Competition Chair
- MARIAN CRANFORD, PA-C**
- NEELIMA KAMINENI, MD**
- KHALIL TANAS, MD**



Friday, October 19
Part I: 10:30am-11:15am
Salons A-D

NC MEDICAID TRANSFORMATION UPDATE



MANDY K. COHEN, MD, MPH
Secretary, NC Department of Health and Human Services

Hear from Secretary of the NC Department of Health and Human Services, Mandy K. Cohen, MD, MPH, as she takes you through the evolving Medicaid landscape in North Carolina.

Part II: 11:15am-11:45am
Salons A-D

CONNECTING COMMUNITIES OF CARE VIA HEALTH INFORMATION EXCHANGE

Be introduced to NC HealthConnex in this session. The North Carolina Health Information Exchange Authority (NC HIEA) oversees and administers North Carolina's state-designated health information exchange, NC HealthConnex. NC HealthConnex is a secure, electronic network that facilitates conversations between authorized health care providers by allowing them to access and share health-related information. Through statewide connectivity and information sharing, NC HealthConnex will help to break down information silos between providers, achieve greater outcomes for patients, and create efficiencies in state-funded programs.



JESSICA BREHMER, MS
Business Development & Outreach Specialist, NC HIEA



CHRISTIE BURRIS
Executive Director, NC HIEA

Friday, October 19
10:30am-11:45am
Salons E-H

MEDTALKS SESSION 4

**APP UTILIZATION: WHERE WE ARE AND WHERE WE CAN
IMPROVE; POTENTIAL SOLUTIONS TO MITIGATE
A PHYSICIAN SHORTAGE**

NOTES



**DECREASING THE NUMBER OF UNINSURED
AND INCREASING ACCESS TO HEALTH CARE**

NOTES

ELEANOR E.W. GREENE, MD, MPH
Triad Women's Health and Wellness
Center, High Point, NC

.....

.....

.....

.....

.....

.....

.....

.....



DARCY J. BURGARD, PA-C, MMS
New Hanover Regional Medical Center
Wilmington, NC

.....

.....

.....

.....

.....

.....

.....

.....



**INCREASING ACCESS TO TREATMENT
FOR OPIOID USE DISORDER IN A RURAL
HEALTH DEPARTMENT SETTING**

NOTES

SHAUNA L. GUTHRIE, MD, MPH
Granville Vance Public Health
Oxford, NC

.....

.....

.....

.....

.....

.....

.....

.....



MARC R. CARRUTH, MD
Carolina Skin Surgery Center
Charlotte, NC

**LEAN TRANSFORMATION IN A SMALL
PRIVATE PRACTICE HEALTHCARE SETTING:
OUR JOURNEY AND ASSESSMENT OF
STAFF PERCEPTIONS OF CHANGE**

NOTES

.....

.....

.....

.....

.....

.....

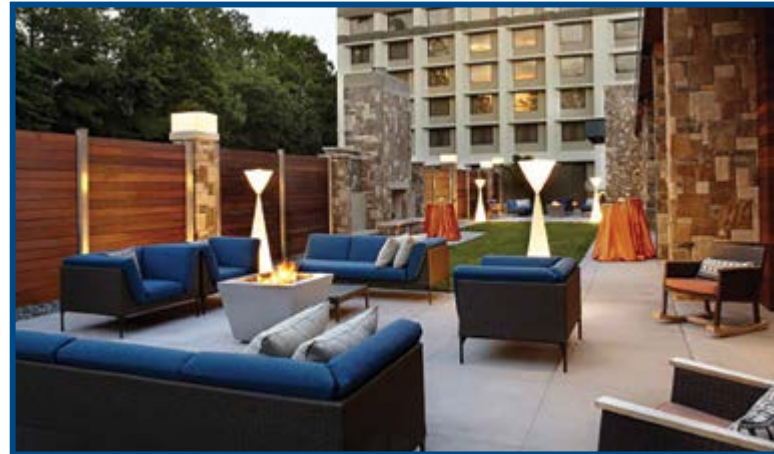
.....

.....

Friday, October 19
5:00pm-6:30pm
Glenwood Foyer and Terrace

LEAD RECEPTION

After a great conference, it's time to unwind and mingle with your friends at the LEAD Reception. Enjoy the Glenwood Terrace's amenities and relax in the beautiful outdoor seating before heading into the LEADership Dinner.



Friday, October 19
6:30pm-10:30pm
Salons I-II

LEADership DINNER

LEAD attendees are invited to the LEADership Dinner, a special event honoring incoming NCMS President **TIMOTHY J. REEDER, MD, MPH, FACEP**, and the graduating class of the NCMS Leadership College. Enjoy a fabulous dinner, celebrate the accomplishments of your colleagues and then dance to the swinging sounds of Russ Wilson and His Famous Orchestra.



Russ Wilson and His Famous Orchestra

Cocktail attire suggested. Pre-registration required.

JOHN L. REYNOLDS, MD NCMS PRESIDENT

John L. Reynolds, MD, is an anesthesiologist from Shelby, NC, and the 164th President of the North Carolina Medical Society (NCMS). Dr. Reynolds is a longtime NCMS member who has led the NCMS' Legislative Cabinet for the past six years and also served on numerous committees and task forces and the NCMS Foundation's Board of Trustees.



Dr. Reynolds was one of the founding partners of Shelby Anesthesia Associates in 1986. That group is now part of Mednax – Southeastern Anesthesiology. He also currently serves as clinical director of the Ambulatory Surgical Center and staff anesthesiologist at CMS – Cleveland Regional Hospital.

After receiving his undergraduate degree from Temple University and his medical degree from the Universidad Autonoma de Guadalajara, Dr. Reynolds completed a surgical residency at Mercy Catholic Medical Center in Pennsylvania and his anesthesiology residency at the Medical College of Georgia.

TIMOTHY J. REEDER, MD, MPH, FACEP NCMS PRESIDENT-ELECT

Timothy J. Reeder, MD, MPH, FACEP, was elected to the NCMS Board of Directors during the 2012 NCMS Annual Meeting in Raleigh after years of service on several committees, including the NCMS Finance Committee, the Credentials Committee, and the Communications and Membership Advisory Committee. He has participated in organized medicine on the local level as well, serving as President of the Pitt County Medical Society in 2007.



An emergency medicine physician, Dr. Reeder received his MD from Ohio State University, where he also spent his residency. He currently works at the Brody School of Medicine, Department of Emergency Medicine, as an Associate Professor and Vice Chair for Clinical Operations.

CONGRATULATIONS TO THIS YEAR'S LEADERSHIP COLLEGE GRADUATES



LATONYA BEATTY, MD
Family Medicine | Wilmington



DARCY J. BURGARD, PA-C
Family Medicine | Wilmington



MARC R. CARRUTH, MD
Dermatology | Charlotte



BABAK MOKARI, DO
Family Medicine | Charlotte



TADHG J. O'GARA, MD
Orthopedic Surgery | Winston-Salem



RAJAVI S. PARIKH, DO
Emergency Medicine | Wilmington



HEATHER L. DAVIS, DO
Family Medicine | Wilmington



KRISTEN M. DORSEY, MD
Pediatrics | Roanoke Rapids



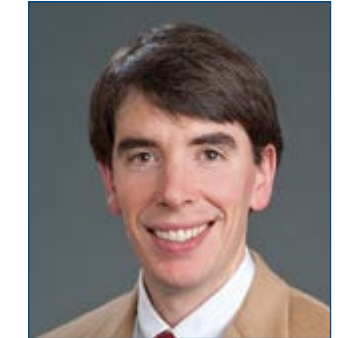
ROBERT C. FRERE, MD, FAAN
Neurology | Greenville



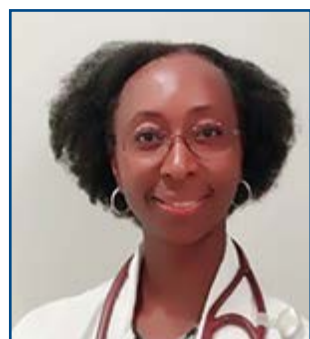
SCOTT M. PAVIOL, MD
Dermatology | Mooresville



HELEN B. POWELL
Student | Chapel Hill



ROY E. STROWD, III, MD
Neurology | Winston-Salem



CYNTHIA M. GARY, PA-C
Family Medicine | Raleigh



ELEANOR E. W. GREENE, MD, MPH
OB-GYN | High Point



SHAUNA L. GUTHRIE, MD, MPH
Family Medicine | Oxford



ANDREW SUMICH, MD
Neurological Surgery | Charlotte



BRYAN A. ZORKO, MD
Emergency Medicine | Greenville

WELCOME TO THE INCOMING 2019 LEADERSHIP COLLEGE CLASS



TRACY BELL, PA-C
Asheville



JAYEN BHAKTA, MD
Internal Medicine | Wilmington



LYNN A. BOWLBY, MD
Internal Medicine | Durham



DEREK CLAR
Student, Campbell University School
of Osteopathic Medicine | Lillington



KARINA PACI
Student, UNC School of
Medicine | Chapel Hill



GAURANG M. PALIKH, MD, FAAN
Neurology | Shelby



LOURDES PEREDA, MD
Pediatrician | Angier



EDWARD RICCIARDELLI, MD
Plastic Surgery | Wilmington



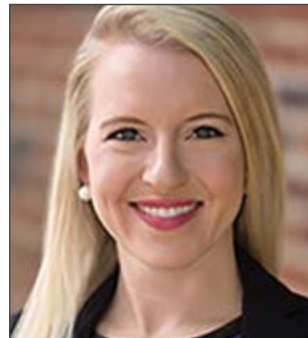
MCNEIL L. CRONIN, MD
Anesthesiology | Winston-Salem



PHILIP J. DEAL, DO
Family Medicine | Wilmington



GREGORY EVANS, MD, CHB
Radiology | North Wilkesboro



SUE ANN FORREST, MPA
NCMS | Raleigh



DANIEL J. ROCKE, MD, JD
Otolaryngology | Durham



VINAY P. SARANGA, MD
Psychiatry, Apex



EVAN SIMMONS
NCMS | Raleigh



SCOTT D. SKIBO, MD
Pulmonary Disease | Fletcher



GARETT R. FRANKLIN, MD
Family Medicine | Cary



**QUINETTE (QUINCY)
JONES, MSW, MHS, PA-C**
Family Medicine | Cary



JOSEPH JORDAN, PHD
NCPHP | Raleigh



DAVID E. MELON, MD
Otolaryngology | Hickory



KELSEY STAUDINGER
Student, Campbell University
School of Osteopathic
Medicine | Lillington



LINDSAY C. STROWD, MD
Dermatology | Winston-Salem



PASCAL OSI UDEKWU, MD
General Surgery | Raleigh



ODERA A. UMEANO, MD
General Practice | Wilmington

NCMS BOARD OF DIRECTORS

JOHN L. REYNOLDS, MD President	ARTHUR E. APOLINARIO, MD, MPH, FAAFP Region 3 Representative
TIMOTHY J. REEDER, MD, MPH, FACEP President-Elect	RACHEL D. KEEVER, MD, CPE, FACC Region 4 Representative
JOHN J. MEIER, IV, MD, MBA Secretary-Treasurer	PALMER EDWARDS, MD, DFAPA At-Large
PAUL R.G. CUNNINGHAM, MD Immediate Past President	MICHELLE F. JONES, MD At-Large
ROBERT W. SELIGSON, MBA, MA Executive Vice President/CEO	BRIAN S. KUSZYK, MD At-Large
PHILIP M. BROWN, JR., MD Region 1 Representative	EILEEN M. RAYNOR, MD, FACS At-Large
JEFFREY W. RUNGE, MD, FACEP Region 2 Representative	MICHAEL J. UTECHT, MD, FACEP At-Large

NCMS FOUNDATION BOARD OF TRUSTEES

LISA SHOCK, DRPH(C), MHS, PA-C President	PAUL R.G. CUNNINGHAM, MD
GERRI MATTSON, MD, MSPH President-Elect	DOCIA HICKEY, MD
STEVE SHABER, JD Treasurer	JIM HILL, PA-C, MED
ROBERT W. SELIGSON, MBA, MA Chief Executive Officer	LYNDON K. JORDAN, III, MD
	RACHEL D. KEEVER, MD, CPE, FACC
	ANDREW S. LAMB, MD
	KATIE LOWRY, MD, MPH
	CONNETTE P. MCMAHON, MD
	WALKER RAY, MD
	TIMOTHY J. REEDER, MD, MPH, FACEP
	JOHN L. REYNOLDS, MD
	JASON SANDNER

NCMSF ANNUAL DONORS

\$25,000 + DR. & MRS. PAUL R. G. CUNNINGHAM	\$250 + HOLLY BIOLA, MD, MPH, FAAFP PALMER EDWARDS, MD, DFAPA ROBERT & MELISSA JOHNSON DR. & MRS. JOHN R. MANGUM
\$10,000 + H. DAVID BRUTON, MD	\$100 + JOANNE B. ALLEN, MD K. ANN AVERILL, MD ANDREW A. BONIN, MD YUN L. BOYLSTON, MD, FAAP G. HADLEY CALLAWAY, MD BRIAN J. CAVENEY, MD, JD, MPH BRIAN C. COOK, MD R. LEE COX, MD, FACS JOEL L. EDWARDS, MD WILLIAM G. FERRELL, MD RALEIGH K. GODSEY, JR., MD G. MICHAEL GOULD, DO LAWRENCE H. GREENBLATT, MD, FACP PAUL T. KAYE, MD DAVID J. KOENIG, MD JAMES E. KURZ, MD MICHAEL J. LALOR, MD KUNAL MITRA, MD, MBA PATRICIA K. NASLUND, MD CATHERINE O. OYEJIDE, MD A. THOMAS PERKINS, IV, MD, PHD ANDREW W. PHILLIPS, MD JEFFREY POKORNY, MD LIANA PUSCAS, MD DR. & MRS. DOUGLAS D. SHEETS MR. & MRS. W. ALAN SKIPPER, CAE PAVAN K. YERRAMSETTY, MD
\$5,000 + DR. RICHARD & MRS. KATHY BRUCH MERRITT J. SESHUL, MD, FACS, FAAOA	
\$2,500 + DR. JEFFREY W. RUNGE & MRS. VIRGINIA D. RUNGE DAVID P. SOUSA, JD	
\$1,000 + ARTHUR E. APOLINARIO, MD, MPH, FAAFP, CH MR. & MRS. CHIP BAGGETT DR. PHILIP BROWN, JR. & MRS. CHRISTY BROWN DR. DON C. CHAPLIN & MR. ANDY D. HUNT DR. CAROLYN R. FERREE & MR. RICHARD C. SANDERS PAMELA P. HIGHSMITH, MED, CFRE RACHEL D. KEEVER, MD, FACC KATIE LOWRY, MD, MPH JOHN J. MEIER, IV, MD, MBA, FAAP, FACP, CPE DARLYNE MENSCHER, MD KRISTINA NATT OCH DAG, PHD WALKER L. RAY, MD TIMOTHY J. REEDER, MD, MPH, FACEP JOHN L. REYNOLDS, MD SHAWN M. SCOTT & TOM MCSWAIN STEVEN M. SHABER, JD LISA P. SHOCK, DR.PH(C), MHS, PA-C MICHAEL J. UTECHT, MD, FACEP	
\$500 + STEPHEN W. KEENE, MBA, JD CONNETTE P. MCMAHON, MD MICHAEL P. MOULTON, MD ALBERT J. OSBAHR, MD, MSCM, FACOEM MELANIE G. PHELPS, JD ROBERT W. SELIGSON, MBA, MA MICHAEL & ELIZABETH SWEENEY CHARITABLE FUND: A DONOR ADVISED FUND OF THE U.S. CHARITABLE GIFT TRUST	\$50 + ROBERT E. BEDNAR, JR., PA-C SUMMER LORMAN NANCY F. LOWE, CMP BABAK MOKARI, DO CONOR BROCKETT, JD JENNIFER S. DABBS JACKIE M. DAVIS ERIN GROVER DEDE & JEFF WHITE

NCMSF CADUCEUS SOCIETY MEMBERS

THANK YOU CADUCEUS SOCIETY MEMBERS

Caduceus Society honors the NCMS Foundation's most generous corporate, foundation and other organizational benefactors and recognizes cumulative giving. Initial membership in the Caduceus Society is currently a minimum of \$50,000.

\$10 MILLION +

BLUE CROSS AND BLUE SHIELD OF NORTH CAROLINA FOUNDATION

\$5 MILLION +

KATE B. REYNOLDS CHARITABLE TRUST

\$1 MILLION +

BLUE CROSS AND BLUE SHIELD OF NORTH CAROLINA

NORTH CAROLINA MEDICAL SOCIETY

MEDICAL MUTUAL INSURANCE CO.

THE PHYSICIANS FOUNDATION

ANONYMOUS

\$500,000 +

THE DUKE ENDOWMENT

\$250,000 +

THE NORTH CAROLINA GLAXOSMITHKLINE FOUNDATION

UNC HEALTH CARE

GOLDEN L.E.A.F. FOUNDATION

\$100,000 +

PFIZER, INC.

NORTH CAROLINA ACADEMY OF PHYSICIAN ASSISTANTS

THE DOCTORS COMPANY

ABBOTT

WELLS FARGO FOUNDATION

\$50,000 +

GLAXOSMITHKLINE

VIDANT EDGEcombe HOSPITAL

QUANTUM HEALTH GROUP, PA

MARIA PARHAM HOSPITAL

FOUNDATION FOR HEALTH LEADERSHIP AND INNOVATION

EMERGEORThO - TOA DIVISION

SANOFI-AVENTIS U.S., INC.

SMITH ANDERSON

ANONYMOUS

AMERICAN CANCER SOCIETY

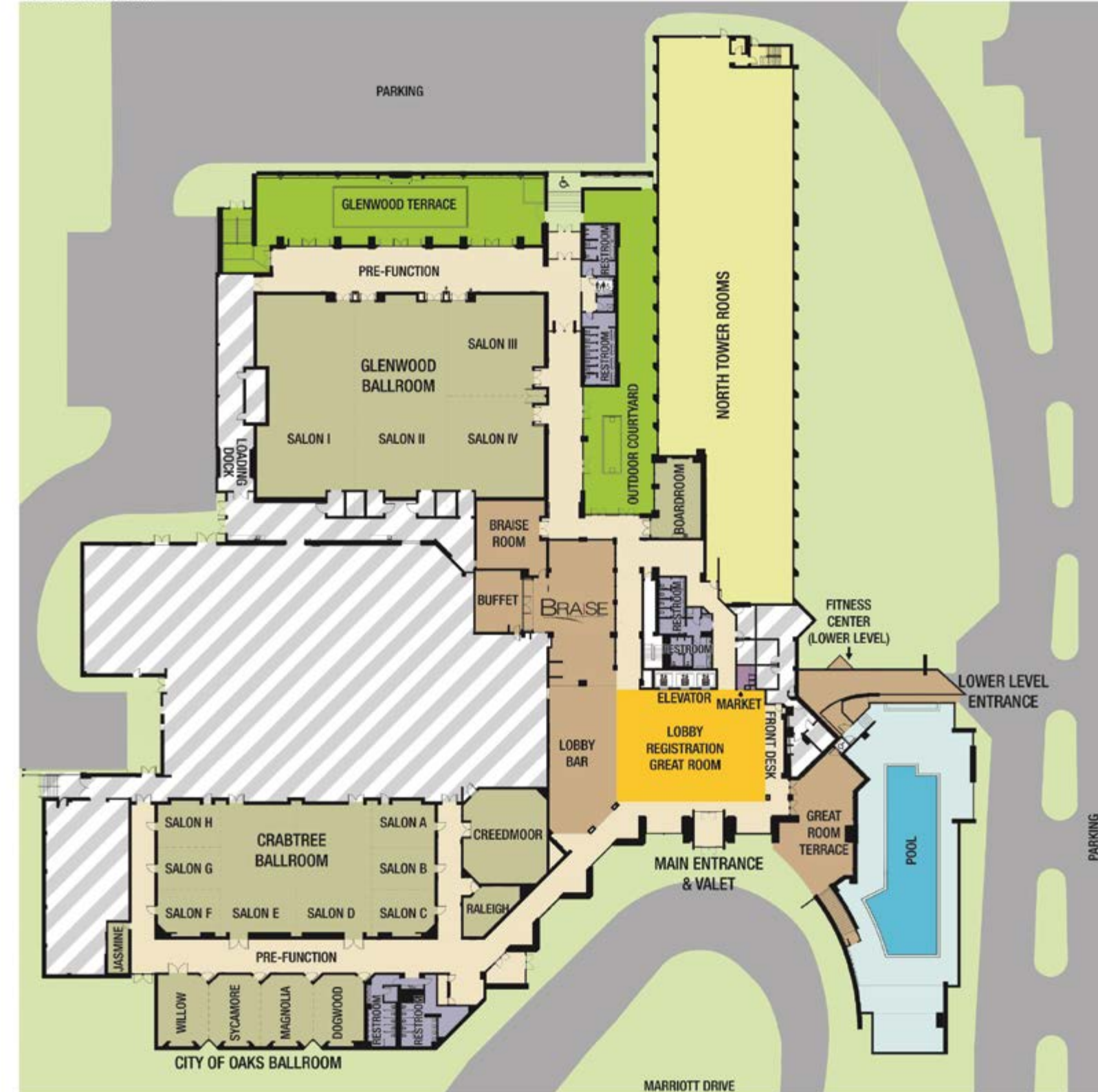
MAG MUTUAL INSURANCE COMPANY

MEDNAX, INC.

NORTH CAROLINA MEDICAL SOCIETY EMPLOYEE BENEFIT PLAN

THE PFIZER FOUNDATION, INC.

UNITED HEALTH FOUNDATION



Thank you for attending

LEAD

North Carolina



Medical Society

Leadership in Medicine

Address: 222 N. Person Street, Raleigh, NC 27601 | Phn: (919) 833-3836 or (800) 722-1350

Web: www.ncmedsoc.org | Email: info@ncmedsoc.org