



**LEADING THE WAY
IN FALL PROTECTION FOR
ELECTRICAL UTILITIES**



THE ULTIMATE IN FALL PROTECTION



LEADING THE WORLD IN SAFETY FROM AMERICA'S HEARTLAND

Capital Safety has been manufacturing the highest quality American-made fall protection equipment out of Red Wing, Minnesota, for more than 40 years.

With more patents, more engineers and more industry innovations than any other fall-protection manufacturer, it's no wonder that Capital Safety's equipment is the most recognized and trusted around the globe. Capital Safety is the world's leader in fall protection because we are dedicated entirely to fall protection.

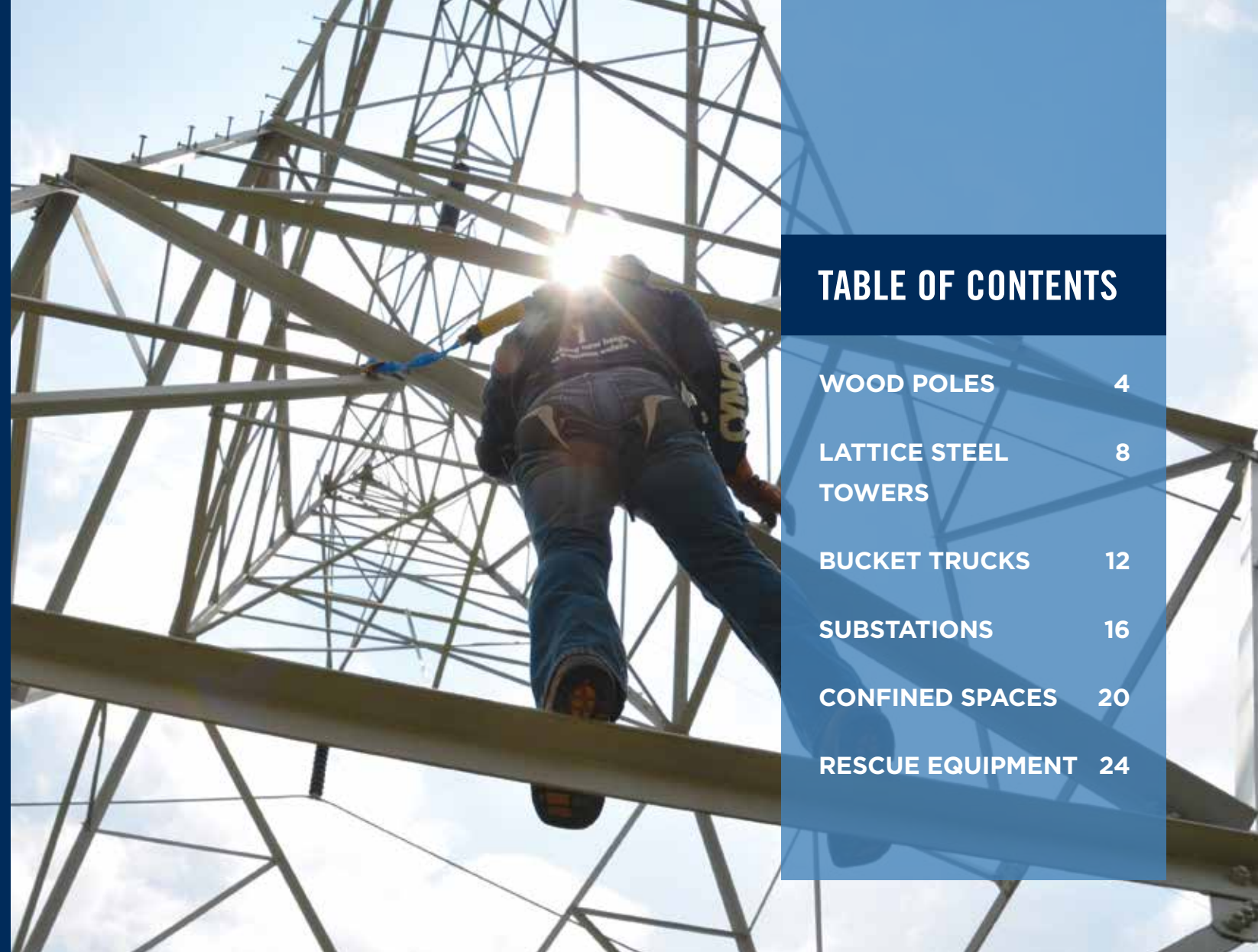
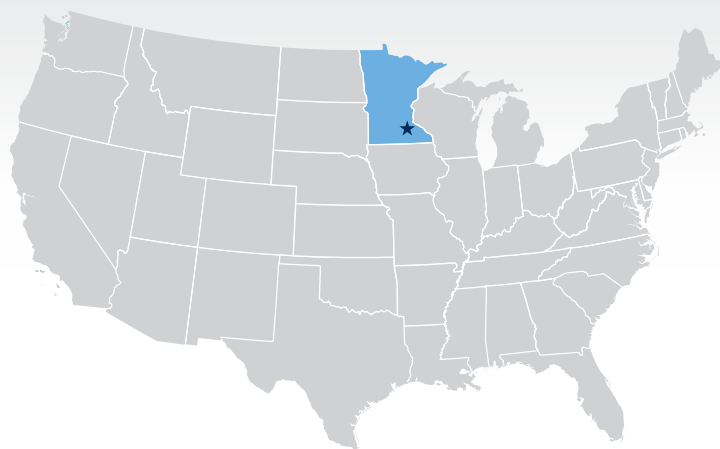


TABLE OF CONTENTS

WOOD POLES	4
LATTICE STEEL TOWERS	8
BUCKET TRUCKS	12
SUBSTATIONS	16
CONFINED SPACES	20
RESCUE EQUIPMENT	24

Proudly made in Red Wing, Minnesota



Capital Safety manufacturing facility, Red Wing, Minnesota.

WHEN YOUR LIFE IS ON THE LINE, YOU DESERVE THE BEST

- Capital Safety's flagship **DBI-SALA®** has been **the premier brand in fall protection and rescue products** for more than 40 years.
- Legendary for its comfort, ease of use, durability and reliability, **our line of products is 15,000 strong—and growing.**
- Our **products are rigorously tested** to meet or exceed applicable standards around the globe.
- **Our ISO 9001-2000 certification** drives superior engineering, quality manufacturing and unparalleled customer service.
- **Accredited lab testing** means our products will perform like no other.
- We offer a full range of fall protection and industrial rescue **training courses.**
- Every DBI-SALA® product carries a **100% satisfaction guarantee** and a **lifetime warranty.**

Capital Safety's combination of excellent design, rugged quality and expert knowledge will protect you—and your employees—the way you deserve.

CLIMB TO THE TOP WITH DBI-SALA®

Pole climbing is a skill that tests the confidence you have in yourself. Letting go of the pole so you can work hands free tests the confidence you have in your equipment.

Having the right tools for the job is essential for the professional lineman. That's why linemen prefer the durability of DBI-SALA® equipment over anything else on the market.



CYNCH-LOK™

Cynch-Lok™ is the benchmark for all wood pole fall-restricting devices and remains the number one choice for working linemen. The innovative and versatile design allows linemen to move faster, easier and safer than ever before.

Cynch-Lok™ features and benefits:

- Pinch-free ergonomic grips for ease of use
- Effortless one-handed adjustment
- One-piece construction
- Enjoy speed, flexibility and reliability
- Field versatility with rope, web and strap options
- Meets CSA Z259.14 type A and AB, ASTM F887-11

1204075

CYNCH-LOK™ WEB FOR DISTRIBUTION POLES

Pole Size (Dia/Circ):
Min. 5.5"/17.5" - Max. 18.5"/58"
Weight: 4.9 lbs. (2.2 kg)



1204057

CYNCH-LOK™ ROPE FOR DISTRIBUTION POLES

Pole Size (Dia/Circ):
Min. 5.5"/17.5" - Max. 18.5"/58"
Weight: 4.8 lbs. (2.1 kg)



1200111

CYNCH-LOK™ REPLACEMENT STRAP FOR TRANSMISSION

Pole Size (Dia/Circ):
Min. 5.5"/17.5" - Max. 30.5"/96"
Weight: 2.4 lbs. (1.1 kg)



1200136

CYNCH-LOK™ REPLACEMENT WEB INTERIOR STRAP

Weight: 3.0 lbs. (1.3 kg)



1200110

CYNCH-LOK™ REPLACEMENT STRAP FOR DISTRIBUTION POLES

Pole Size (Dia/Circ):
Min. 5.5"/17.5" - Max. 18.5"/58"
Weight: 1.9 lbs. (0.86 kg)



1200115

CYNCH-LOK™ REPLACEMENT ROPE INTERIOR STRAP

Weight: 2.9 lbs. (1.3 kg)



1234080

CYNCH-LOK™ ADJUSTABLE WEB POSITIONING STRAP

with 1234070 with blue aluminum carabiners, one with captive eye, 8' (2.4 m) length

1234082 6' (1.8 m) length



1234070

CYNCH-LOK™ ADJUSTABLE ROPE POSITIONING STRAP

with rope adjuster x 8' (2.4 m) and steel carabiner and snap hook



1234071

CYNCH-LOK™ ADJUSTABLE ROPE POSITIONING STRAP

with rope adjuster and aluminum carabiner and snap hook

1201377

8' (2.4 m) ADJUSTABLE WEB POSITIONING LANYARD

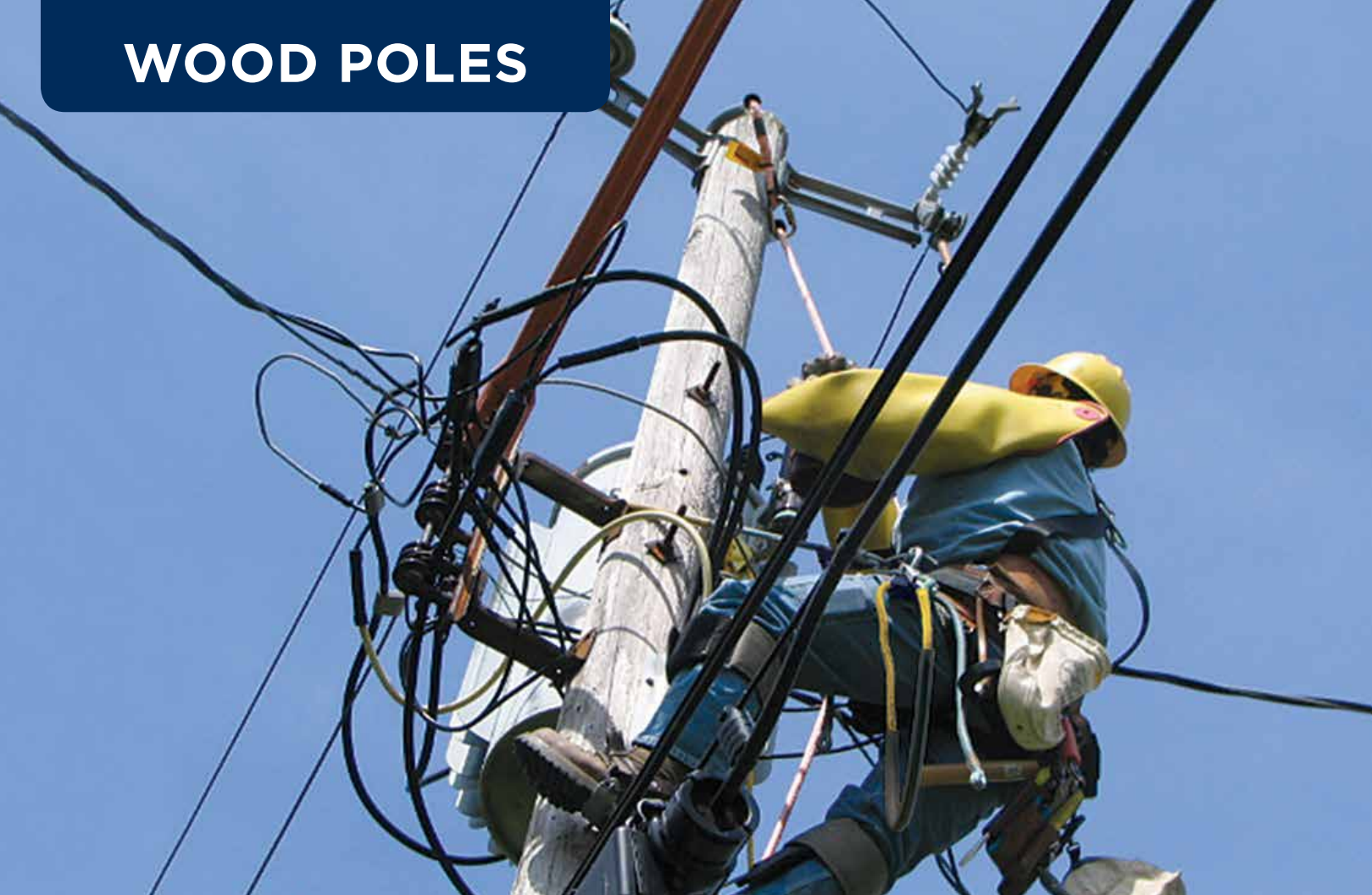
with snap hook at one end, web speed adjuster and steel carabiner at other end



124030

CYNCH-LOK™ ADJUSTABLE WEB POSITIONING STRAP

with rope adjuster



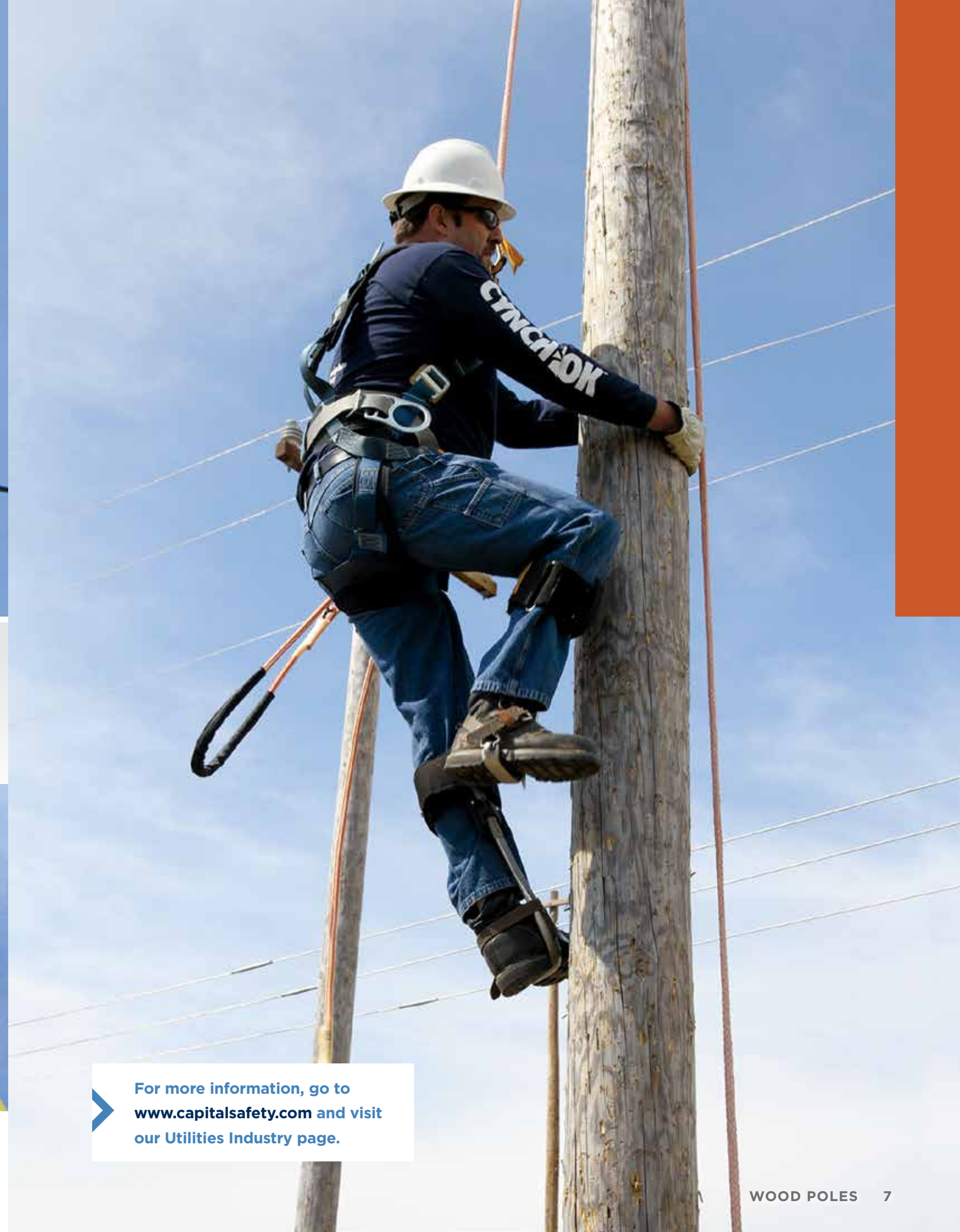
SAFLOK™

Steel Structure Fall Arrest System with anchor tube, installation/removal tool, 80' (24 m) 5/8" (16 mm) high dielectric rope, carabiner, rope grab with shock absorbing lanyard, rescue loop sling and carrying bag.

2104810

SAFLOK™ STEEL STRUCTURE FALL ARREST SYSTEM

with anchor tube, installation/removal tool, 80' (24 m) 5/8" (16 mm) high dielectric rope, carabiner, rope grab with shock-absorbing lanyard, rescue loop sling and carrying bag



For more information, go to www.capitalsafety.com and visit our Utilities Industry page.

LATTICE STEEL TOWERS

WE GO TO GREAT HEIGHTS WITH YOU

When it comes to climbing steel structures, DBI-SALA® is the best in the business. Our equipment is built for maximum reliability and ease of use. From the strongest rebar hooks to the smallest shock pack, we have the equipment you want.



EZ-STOP™ LANYARDS

EZ-STOP™ lanyards use a controlled tearing action when subjected to fall arrest forces. They limit the average arresting forces to 900 lbs. (4 kN) or less. These lanyards feature 1" polyester web construction, double locking snap hooks, a durable nylon shock absorber cover and various lengths and hook options to fit your job.

1246285

ROPE LANYARD WITH 100% TIE-OFF
Aluminum snap hook at one end, aluminum rebar (2.5" gate opening) at leg ends x 6'



1246284

ROPE LANYARD WITH 100% TIE-OFF
Snap hook at one end, steel rebar (2.5" gate opening) at leg ends x 6'



1246075



1246273

ADDITIONAL EZ-STOP™ LANYARD OPTIONS

Part #	Description
1246075	EZ-STOP™ FORCE2™ WRAPBAX™ WEB, 100% tie-off, snap hook at one end, Wrapbax™ hook at other end x 6'
1246273	EZ-STOP™ FORCE2™ ROPE, 100% tie-off, aluminum snap hook at one end, aluminum rebar (2.5" gate opening) at leg ends x 6'

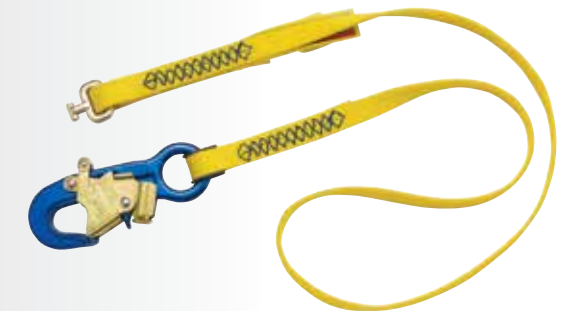
1246060

EZ-STOP™ MODULAR SHOCK PACK
Modular connector at one end, aluminum snap hook at other end



ADDITIONAL MODULAR LANYARD OPTIONS

Part #	Description
1246043	MODULAR ELASTIC LEG, modular connector at one end, aluminum snap hook at other end x 6'
1246045	MODULAR WEB LEGS, 100% tie-off, modular connector at one end, steel rebar hook (2.5" gate opening) at leg ends x 6'
1246048	MODULAR ELASTIC LEGS, 100% tie-off, modular connector at one end, aluminum rebar hook (2.5" gate opening) at leg ends x 6' at leg ends x 6'
1246050	MODULAR LEG WRAPBAX™ 2 TIE-BACK SINGLE-LEG with 5,000-lb. Wrapbax™ 2 hook at end x 6'



1246040

MODULAR WEB LEG
Modular connector at one end, aluminum snap hook at other end x 6'



1246043



1246050



1246048



1246045

LATTICE STEEL TOWERS



EXOFIT NEX™ HARNESSES

ExoFit NEX™ harnesses are the most advanced harnesses in the industry. They're the culmination of our experience with ExoFit™ and ExoFit™ XP, ongoing research and the incorporation of new materials and innovative features. When you purchase an ExoFit NEX™ harness, you can be certain that you're purchasing the finest harness available today, from DBI-SALA® or anyone else.

COMFORT—We manufacture these harnesses using materials that won't add unnecessary weight.

FUNCTION—When speed and efficiency are project requirements, ExoFit NEX™ will provide the freedom and confidence.

DURABILITY—ExoFit NEX™ harnesses are designed using materials that last.



1150414
EXOFIT NEX™ ROPE ACCESS AND RESCUE HARNESS SUSPENSION SEAT SLING



3101374
NANO-LOK™ TIE-BACK SRL-TWIN LEG
5,000-lb. gated snap hook with twin leg quick connector



3504500
LEADING-EDGE SRL 30' of 7/32" galvanized steel wire rope, in-line shock absorber

5000400

COMPLETE ROPE GRAB SYSTEM in a bag for convenient compliance and safety on the job

Kit includes:

- MOBILE ROPE GRAB 5000335
- SHOCK-ABSORBING LANYARD 1240007
- LIFELINE x 50' 1202794
- COUNTERWEIGHT 5901583
- TIE-OFF ADAPTOR 1003000
- CARRYING BAG 9511597



1113347

EXOFIT NEX™ ROPE ACCESS & RESCUE SUSPENSION HARNESS Repel™ web, Tech-Lite™ aluminum front, back and side D-rings, Duo-Lok™ quick-connect buckles and hybrid comfort padding

- 1113345 Small
- 1113346 Medium
- 1113348 X-Large

1113193

EXOFIT NEX™ TOWER CLIMBING HARNESS with aluminum front, back and side D-rings, locking quick-connect buckles with sewn-in hip pad and belt, removable seat sling with positioning D-rings

- 1113190 Small
- 1113191 Medium
- 1113192 Large

1113318

EXOFIT NEX™ ARC FLASH HARNESS with Nomex®/Kevlar® web, construction style, PVC-coated aluminum back D-ring, locking quick-connect buckles, sewn-in hip pad and belt, comfort padding

- 1113315 Small
- 1113316 Medium
- 1113317 Large

* Refer to page 13 for additional arc flash harnesses.

RESCUE EQUIPMENT

Part #	Description
2100093	TOWER RESCUE HOOK
3322100	ROLLGLISS™ R500 RESCUE KIT with 100' system; three anchor slings, three carabiners, pulley, edge protector, rope grab and carrying bag



2100093

* Refer to pages 24-27 for additional rescue equipment.

➤ For information on our training courses, go to www.capitalsafety.com.

WE'VE GOT YOUR BACK

Fall protection in bucket trucks poses unique challenges. Tight spaces and lack of mobility can make it difficult and inconvenient for the worker. Our specialized harnesses and lanyards provide a secure connection, full range of motion in limited spaces and the ultimate in arc flash protection to meet or exceed ANSI and CSA requirements.



NANO-LOK™ ARC FLASH BUCKET TRUCK SRL

Made specifically for the electrical utility industry.

COMPACT—At only 1.9 lbs., it is the smallest and lightest arc flash SRL on the market!

VERSATILE—Unrivaled jobsite flexibility.

- 16 standard Nano-Lok™ configurations to meet virtually any arc flash or hot-work need.
- One unique web leg configuration specifically designed for bucket truck and aerial lift applications.
- Industry leading 420-lb. (190 kg) user capacity.

SAFE—The Nano-Lok™ Arc Flash SRL has been tested to ASTM F887-11 standards.

- Electric arc performance of 40 cal/cm².
- Replaces lanyards and improves worker safety.
- Stops falls within inches and reduces fall distances!

3101358

NANO-LOK™ ARC FLASH with Web leg with aluminum snap hook—web loop on harness end



3101375

NANO-LOK™ ARC FLASH with web leg with aluminum snap hook—aluminum carabiner on harness end



3101363

NANO-LOK™ ARC FLASH with single-leg connector with aluminum carabiner (captive eye)



1103088

EXOFIT NEX™ ARC FLASH HARNESS with Nomex®/Kevlar® web, PVC-coated aluminum back D-ring, locking quick-connect buckles, comfort padding

- 1103085 Small
- 1103086 Medium
- 1103087 Large



1110891

EXOFIT™ XP ARC FLASH HARNESS with Nomex®/Kevlar®, PVC-coated hardware, pass-thru buckles, back and leg Nomex®/Kevlar® pads

- 1110893 Small
- 1110890 Medium
- 1110892 X-Large



1110881

EXOFIT™ XP ARC FLASH HARNESS Construction style, Nomex®/Kevlar®, web and pads, back web loop, quick-connect buckles and Kevlar® pass-thru body belt

- 1110883 Small
- 1110880 Medium
- 1110882 X-Large



1110751

DELTA™ ARC FLASH HARNESS with 7,000-lb. Nylon web, no metal above waist, front and back web loop, pass-thru buckle legs, leather insulators

- 1110754 Small
- 1110750 Medium
- 1110752 Large



1110811

DELTA™ ARC FLASH HARNESS with Nomex®/Kevlar® web, no metal above waist, front and back web loop, quick-connect buckle legs, leather insulators

- 1110815 Small
- 1110810 Medium
- 1110812 X-Large



1150054

DELTA™ ARC FLASH KIT with 1110751 Delta™ Arc Flash Nylon Harness with web loop & 1240861 Arc Flash Shock Absorbing Lanyard 6' with bag



PROTECTING AGAINST ARC FLASH

People working at heights may also be exposed to arc flashes. That's why we make fall protection equipment designed to withstand arc flash and still operates as intended. Our equipment uses the most recent ASTM F887-11 as the standard. We arc flash test all harnesses and lanyards through a third party, setting passing requirements for performance in accordance with ANSI Z359.1 dynamic test requirements. Through testing and training, you can be assured of quality products that help protect your worker.



1244610

SHOCKWAVE™ 2 ARC FLASH LANYARD
Nomex®/Kevlar® single-leg with snap hooks x 6' (1.8 m)



1244611

SHOCKWAVE™ 2 ARC FLASH LANYARD
Nomex®/Kevlar® single-leg hook and web loop x 6' (1.8 m)



1246306

EZ-STOP™ II ARC FLASH LANYARD with single-leg and Nomex®/Kevlar® pack and web, snap hooks x 6' (1.8 m)

ADDITIONAL ARC FLASH LANYARD OPTIONS

Part #	Description
1246303	EZ-STOP™ Nomex®/Kevlar® web, snap hook at ends x 3'
1246304	EZ-STOP™ Nomex®/Kevlar® web, snap hook at ends x 4'
1246317	EZ-STOP™ F2 adjustable Nomex®/Kevlar® webbing with snap hooks at ends x 6'



ROLLGLISS™ R520 RESCUE AND DESCENT

This fully automatic, hands-free descent for bucket trucks, aerial lifts, towers, cranes and more is simply the best escape solution on the market. It's easier to use and requires less training.

3305040

This escape device provides a quick, efficient means of evacuation from various elevated work surfaces.



For more information, go to www.capitalsafety.com and visit our Utilities Industry page.

WE HAVE A SOLUTION FOR ANY SITUATION

Providing fall protection in substations requires the use of a wide variety of equipment. Transformers, breakers, switchgear and confined spaces are a challenge. Locating suitable anchor points, appropriate fall clearance distances and minimum approach distances all pose threats to worker safety. Our solutions are developed to allow you and your team to anchor and maneuver safely wherever you go.



ADVANCED PORTABLE FALL ARREST SYSTEM



8516691

ADVANCED PORTABLE FALL ARREST SYSTEM (PFAS)

- Three independent swiveling tie-off points
- 360 degrees of protection for three workers
- Telescopic design; 32.75" (83.2 cm) to 46" (116.8 cm) to 57.25" (145.4 cm)
- Lightweight and durable aluminum construction
- Leveling screws plumb system on inclines up to 15 degrees
- Built-in anchor ring for horizontal lifeline attachment
- Portable and fixed bases provide complete jobsite versatility
- Weight: 38 lbs. (17.5 kg)



8516693

RESCUE DAVIT ARM FOR ADVANCED PORTABLE FALL ARREST POST

The optional Rescue Davit Arm assembles easily to the Portable Fall Arrest Post, providing simple and efficient rescue and material-handling capabilities. It's made with lightweight aluminum materials for easy transportation and setup. Weight: 20.5 lbs. (9.3 kg)

NOTE: 8516691 post not included—order separately



8516996

14' (4.2 m) UNI-ANCHOR FALL ARREST POST

Mounts using Uni-Anchor plates and extends up to 14' (4.2 m) to provide a one-man-rated fall-arrest anchor point. Weight: 71 lbs. (32.3 kg)



7600502

20' SAYFLINE™ SYNTHETIC HORIZONTAL LIFELINE SYSTEM

- Complete system in bag for install with no special tools or equipment
- Portable for re-use
- Two tie-off adaptors included to anchor system to structure
- Capacity of two workers
- 20' to 100' lengths available (6.1 m to 30.5 m)

ACCESSORIES

Part #	Description
8517422	SAND-BLASTED STEEL UNI-ANCHOR with tie-off anchor
8516997	UNI-ANCHOR I-BEAM base portable anchor clamps to I-beams, 56 lbs. (25.5 kg)



8517422

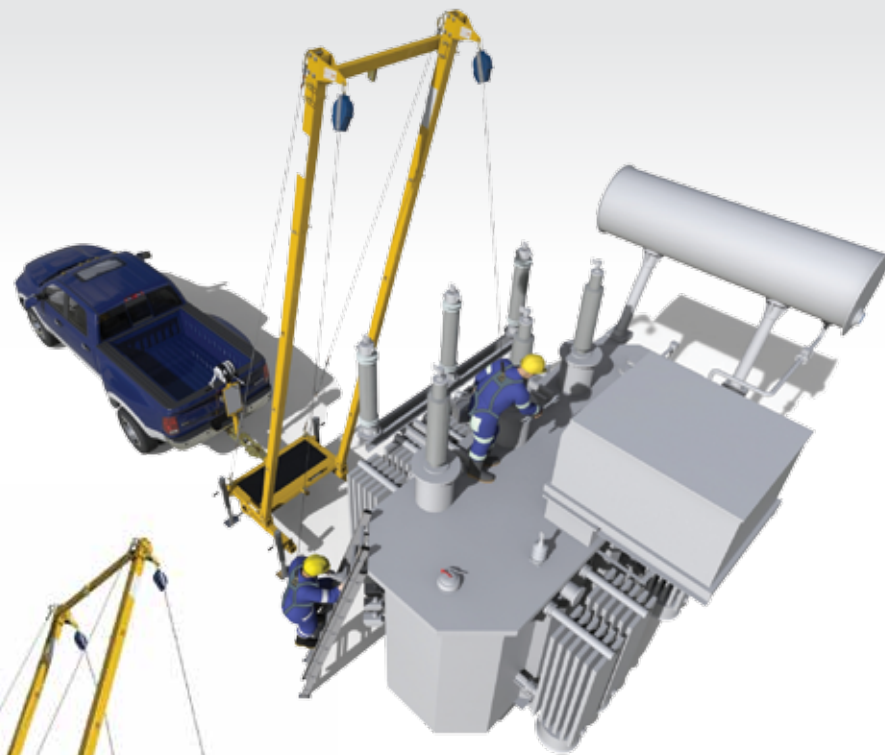


8516997



FLEXIGUARD™ SOLUTIONS

Flexiguard™ is designed to meet the requirements of your specific application while ensuring maximum safety and peace of mind. The Hitch Mounted Anchor System is a portable system originally designed to access and maintain substations. The unique design of this system allows it to attach to a class-three hitch for transport on a truck or service vehicle. Assembled in less than 20 minutes, this system provides anchorage points up to 22' tall. It is rated for a maximum of two users and is ANSI and OSHA compliant.



8530313

HITCH MOUNTED ANCHOR SYSTEM



SAFLOK™

The unique Saflok Steel Structure Fall Arrest System provides workers with 100% fall protection when connecting to beams, angle iron, bar joists, lattice steel and other structures in traditional power plants, substations, switch yards, manufacturing facilities or construction sites.



9502776
CARRY BAG

2100420
HIGH DIELECTRIC ROPE

2104810
SAFLOK™ STEEL STRUCTURE FALL ARREST SYSTEM

2100425
ANCHOR TUBE—steel structure

2100418
RESCUE LOOP SLING

5002055
ROPE GRAB with integrated shock-absorbing lanyard

2000112
CARABINER

2100419
INSTALLATION/REMOVAL TOOL

2100425

2100427

1003000

ACCESSORIES

Part #	Description
2100425	8" (203 mm) STEEL STRUCTURE ANCHOR TUBE
2100427	12"–30" (305 mm–762 mm) ADJUSTABLE STEEL ANCHOR TUBE
1003000	WEB TIE-OFF ADAPTER Length: 3' (0.9 m)

➤ For more information, go to www.capitalsafety.com and visit our Utilities Industry page.

LET DBI-SALA® HELP YOU

Entering and exiting confined spaces can happen in a variety of circumstances and pose a myriad of challenges: restricted movement, limited space and general physical challenges. That's why our hoist and winch equipment provide the most lightweight and efficient rescue and retrieval with the greatest reliability. We believe our products are the strongest, lightest and most versatile in the industry.

8525001

ADVANCED BASIC HOIST WITH WINCH

Two-piece davit mast and folding base assembly, winch with 50' (15 m) galvanized cable lifeline and mounting brackets. Weight: 80 lbs. (36.3 kg)



8530352

GUARDRAIL WITH INTEGRATED DAVIT SYSTEM

(winch not included)



8518000

ADVANCED FIVE-PIECE HOIST SYSTEM

Davit arm and base system includes 11.5" to 27.5" (29.2 cm to 69.8 cm) adjustable offset upper mast **8518001**, 33" (83.8 cm) lightweight lower mast **8518002** and three-piece lightweight base **8518005**. Includes winch-mounting bracket. Order winch and SRL separately. Weight: 100 lbs. (45.5 kg)



SALALIFT™ II WINCHES

The Salalift™ II is manually operated for easy operation. Simply rotate the handle to raise or lower personnel or materials. Gear ratio is 6:1 with an average lifting speed of 3.8 m/min. No power source is required. The quick Mount System incorporates a quick-mount bracket which mates with a bracket on all DBI-SALA® support structures allowing the user to attach/detach the device with a detent pin to make retrofitting easy (no additional hardware needed).



8102001

SALALIFT™ II WINCH with 60' of 1/4" galvanized cable, mounting bracket and winch bag



800000

ADVANCED 7' (2.13 m) ALUMINUM TRIPOD with adjustable locking legs, safety chains, rubber safety shoes with spiked edges, top pulley assembly and mounting bracket base **8005048**



Model #	Description	Total Weight
8102001	SALALIFT™ II WINCH with 60' of 1/4" galvanized cable, mounting bracket and winch bag	16.3 kg
8102003	SALALIFT™ II WINCH with 8102001 and 60' of 1/4" stainless steel cable	16.3 kg
8102009	SALALIFT™ II WINCH with 8102001 and 90' of 3/16" galvanized cable	15.8 kg
8102011	SALALIFT™ II WINCH with 8102001 and 90' of 3/16" stainless steel cable	15.8 kg
8102005	SALALIFT™ II WINCH with 8102001 and 120' of 3/16" galvanized cable	16.7 kg
8102007	SALALIFT™ II WINCH with 8102001 and 120' of 3/16" stainless steel cable	16.7 kg
8102050	SALALIFT™ II WINCH with 8102001 and 50' of synthetic Technora rope and lifeline counterweight	14.9 kg

1110781

DELTA™ ARC FLASH HARNESS with 7,000-lb. Nylon web, vest style, back web loop, quick-connect buckles, leather insulators, rescue loops. Available in small, medium and large sizes.

1110788 Small
1110780 Medium
1110782 X-Large



1103088

EXOFIT NEX™ ARC FLASH HARNESS with Nomex®/Kevlar® web, PVC-coated aluminum back D-ring, locking quick-connect buckles, comfort padding

1103085 Small
1103086 Medium
1103087 Large



1110881

EXOFIT™ XP ARC FLASH HARNESS Construction style, Nomex®/Kevlar® web and pads, back web loop, quick-connect buckles and Kevlar® pass-thru body belt

1110883 Small
1110880 Medium
1110882 X-Large



2100093

RESCUE HOOK AND HOT STICK ADAPTOR TOOL
2100111
HOT STICK ADAPTOR TOOL ONLY

* Items above should be used with hot stick pole.



➤ For more information, go to www.capitalsafety.com and visit our Utilities Industry page.

EQUIPMENT THAT WON'T LET YOU DOWN UNTIL YOU NEED IT TO

Capital Safety makes gear that's lighter, easier to use and quick to set up, because we want it to be there when you need it. Whether it's controlled decent rescue or technical rope access rescue you're looking for, we have you covered.

ROLLGLISS™ EQUIPMENT

The Rollgliss™ R500 offers the choice of controlled descent rescue, evacuation or the versatility of assisted rescue with lifting capabilities. This fully automatic controlled descent feature, at 2-3' per second (0.6-0.9 m), sets new standards of performance and safety.

Ideal for rescue and evacuation from heights up to 1,000' (300 m) for one 310-lb. (140 kg) user or 330' (100 m) for two users totaling 550 lbs. (248 kg). Unique bidirectional design allows one end of the lifeline to descend while the other ascends, ready for another rescue.

DESCENDERS



8700079

Red aluminum anodized gold 7/16" (11 mm) **NOWORRIES™ DOUBLE STOP DESCENDER**

RIGGING PLATES



2189999

Paw-shaped five anodized gold **RIGMASTER™ RIGGING PLATE**

2189997

Small triangle six anodized gold **RIGMASTER™ RIGGING PLATE**

CARABINERS & QUICK LINKS



8700168

Small offset D rescue carabiner alum 5/8" (16 mm) screw gate 6,750 lbs. (30 kN) **RIGMASTER™ CARABINERS**

8700198

Medium offset D rescue carabiner alum 7/8" (22 mm) screw gate 8,100 lbs. (36 kN) **RIGMASTER™ CARABINERS**

2000025

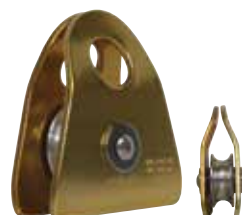
Medium offset D rescue carabiner alum 7/8" (22 mm) screw gate 8,100 lbs. (36 kN) **RIGMASTER™ CARABINERS**

PULLEYS



8700012

Single alum 1.5" (40 mm) Up to 7/16" (11 mm)



8700013

Prusik minding single alum 1.5" (40 mm) Up to 7/16" (11 mm)



8700057

RESCUEMATE TRANSPORT PULLEY
Tyrolean "V" alum 2.25" (60 mm) Up to 1/2" (13 mm)

INDUSTRIAL-GRADE RESCUE PRODUCTS MADE FOR WORK, NOT FOR PLAY



HARNESSES



11500414
EXOFIT NEX™ ROPE ACCESS AND RESCUE HARNESSES SEAT

1113348

EXOFIT NEX™ ROPE ACCESS AND RESCUE HARNESSES
Repel™ web, Tech-Lite™ aluminum front, back and side D-rings, Duo-Lok™ quick-connect buckles and hybrid comfort padding

1113345 Small
1113346 Medium
1113347 Large

1113373

EXOFIT NEX™ BLACK-OUT ROPE ACCESS AND RESCUE HARNESSES
Repel™ web, Tech-Lite™ aluminum front, back and side D-rings, Duo-Lok™ quick-connect buckles and hybrid comfort padding

1113370 Small
1113371 Medium
1113372 Large



ROPES

Part #	Description
8705115	ROPE LIFELINE finished both ends with a thimble 7/16" (11 mm) static Kernmantle, poly/nylon 50' (15 m)
8705116	ROPE LIFELINE finished both ends with a thimble 7/16" (11 mm) static Kernmantle, poly/nylon 100' (30 m)
8705117	ROPE LIFELINE finished both ends with a thimble 7/16" (11 mm) static Kernmantle, poly/nylon 200' (60 m)
8705118	ROPE LIFELINE finished both ends with a thimble 7/16" (11 mm) static Kernmantle, poly/nylon 325' (100 m)
8705119	ROPE LIFELINE finished both ends with a thimble 7/16" (11 mm) static Kernmantle, poly/nylon 410' (125 m)
8705120	ROPE LIFELINE finished both ends with a thimble 7/16" (11 mm) static Kernmantle, poly/nylon 650' (200 m)
8700600	SEWN LOOP PERSONAL CHEST PRUSIK 1/4" (6 mm) Kernmantle prusik cord, poly/nylon 1.7' (0.52 m)
8700601	SEWN LOOP PERSONAL CHEST PRUSIK 1/4" (6 mm) Kernmantle prusik cord, poly/nylon 3.9' (1.2 m)



HAUL KITS

8701100

RESCUEMATE™ MICRO HAUL KIT
 Mechanical advantage: 6:1
 Working length: 6.5' (2 m)
 Rope size: 5/16" (8 mm)
 Working load limit: 660 lbs. (300 kg)



8704104

RESCUEMATE™ AUTO LOCK HAUL KIT
 Mechanical advantage: 4:1
 Working length: 33' (10 m)
 Rope size: 7/16" (11 mm)
 Working load limit: 660 lbs. (300 kg)



➤ For more information, go to www.capitalsafety.com and visit our Utilities Industry page.

ACCESSORIES

ROPECRAFT™ BAGS

Part #	Description
8700225	S 1,525 ci (25 L) Fits 164' x 7/16" (50 m x 11 mm) or 82' x 1/2" (25 m x 13 mm) PVC
8700222	M 2,440 ci (25 L) Fits 328' x 7/16" (100 m x 11 mm) or 164' x 1/2" (50 m x 13 mm) PVC
8700223	L 3,050 ci (25 L) Fits 655' x 7/16" (200 m x 11 mm) or 328' x 1/2" (100 m x 13 mm) PVC
8700224	XL 3,660 ci (25 L) Fits 980' x 7/16" (300 m x 11 mm) or 655' x 1/2" (200 m x 13 mm) PVC



8700225

SWIVEL & GEAR ROLL

8700144

SWIVEL
 Minimum breaking strength:
 9,000 lbs. (40 kN)



OZPOD™

8700006

RESCUE FRAME
 Max. height: 10' (3 m)
 Max. leg spread: 13' (4 m)

ASCENDERS

8700523

LEFT-HAND ASCENDER
 Rope size: 7/16"-1/2"
 (10.5-13 mm)



8700524

RIGHT-HAND ASCENDER
 Rope size: 7/16"-1/2"
 (10.5-13 mm)



8700522

CHEST ASCENDERS
 gold, retrofit
 Rope size: 7/16"-1/2"
 (10.5-13 mm)



EXPLORER FOOT LOOPS & ETRIER

Part #	Description
1219006	SINGLE-LEG WEBBING FOOT LOOP adjustable up to 6' (1.8 m)
1219020	5-STEP ETRIER WEBBING 6' (1.8 m)



1219020



INNOVATION THAT BRINGS WORKERS AT HEIGHT HOME SAFELY.

Capital Safety is a global company solely dedicated to fall protection and rescue. Our focus is razor sharp. And it continually drives us to design and manufacture the safest possible height safety gear.

We understand the industries we serve and listen to the workers in the field. We employ the best engineers to create innovative solutions and patent the products that keep workers safe at heights around the world. Capital Safety has the best quality and largest range of fall protection products in the industry. But we're more than a product company.

We take an innovative approach in bringing our products to the field. We have created international partnerships and a vast network of authorized distributors, certified installers and service centers. We offer on-site and in-house training. And we're ISO 9001-2000 certified for customer service, as well as manufacturing and engineering.

Capital Safety is one of the world's leading manufacturers of fall protection and rescue equipment, with decades of experience and a legacy of innovation. Look for complete solutions in our extensive line of DBI-SALA® and Protecta® products.



Capital Safety - USA: 800 328 6146
Canada: 800 387 7484 Latin America: +1 651 385 4301
Asia: +65 65587758 Germany: +49 (0)30 92 03 83 87 00
New Zealand: 0800 212 505 Australia: 1800 245 002
Europe, Middle East, Africa: +33 (0)4 97 10 00 10
Northern Europe: +44 (0)1527 548000
www.capitalsafety.com info@capitalsafety.com