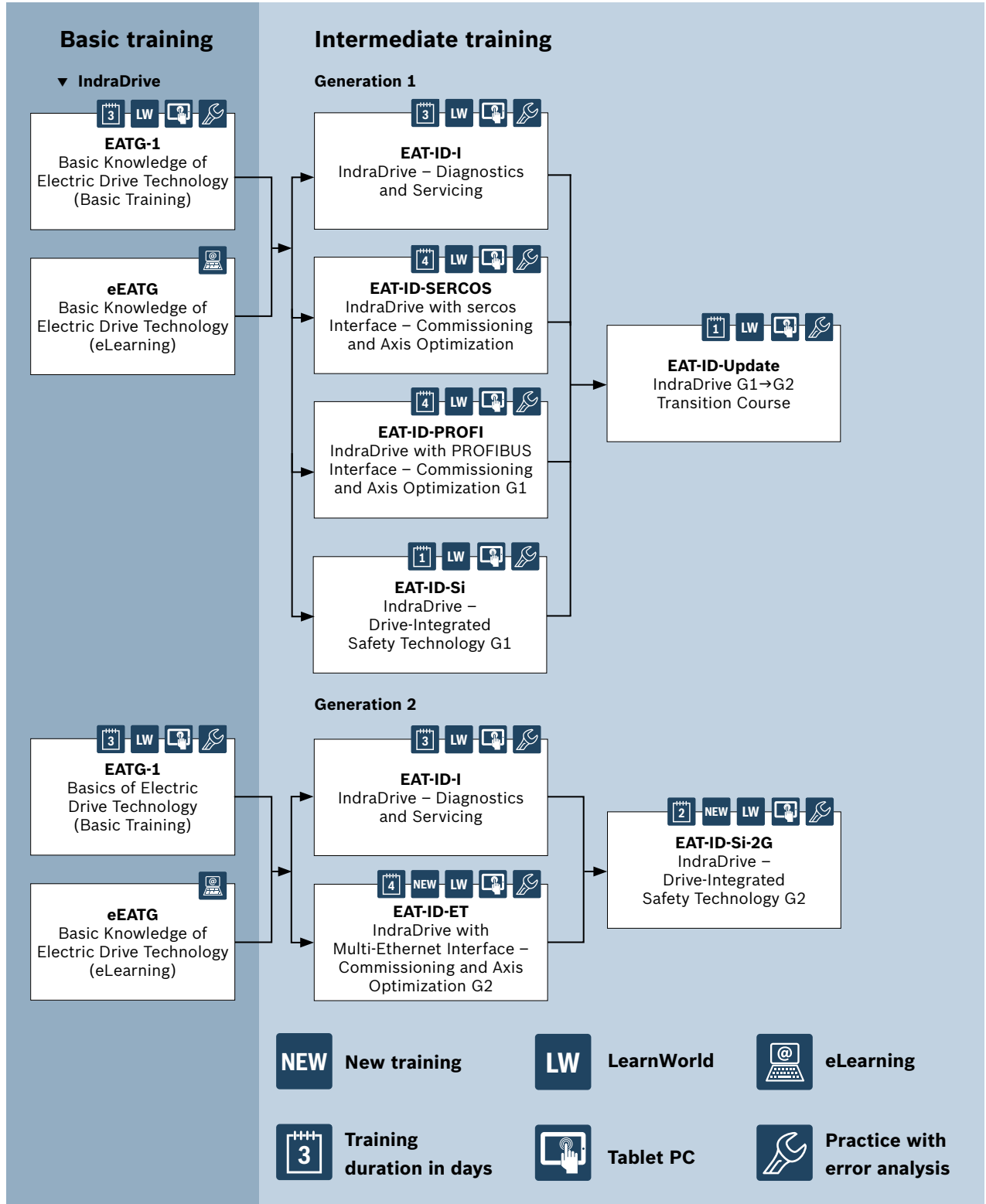


Learning path

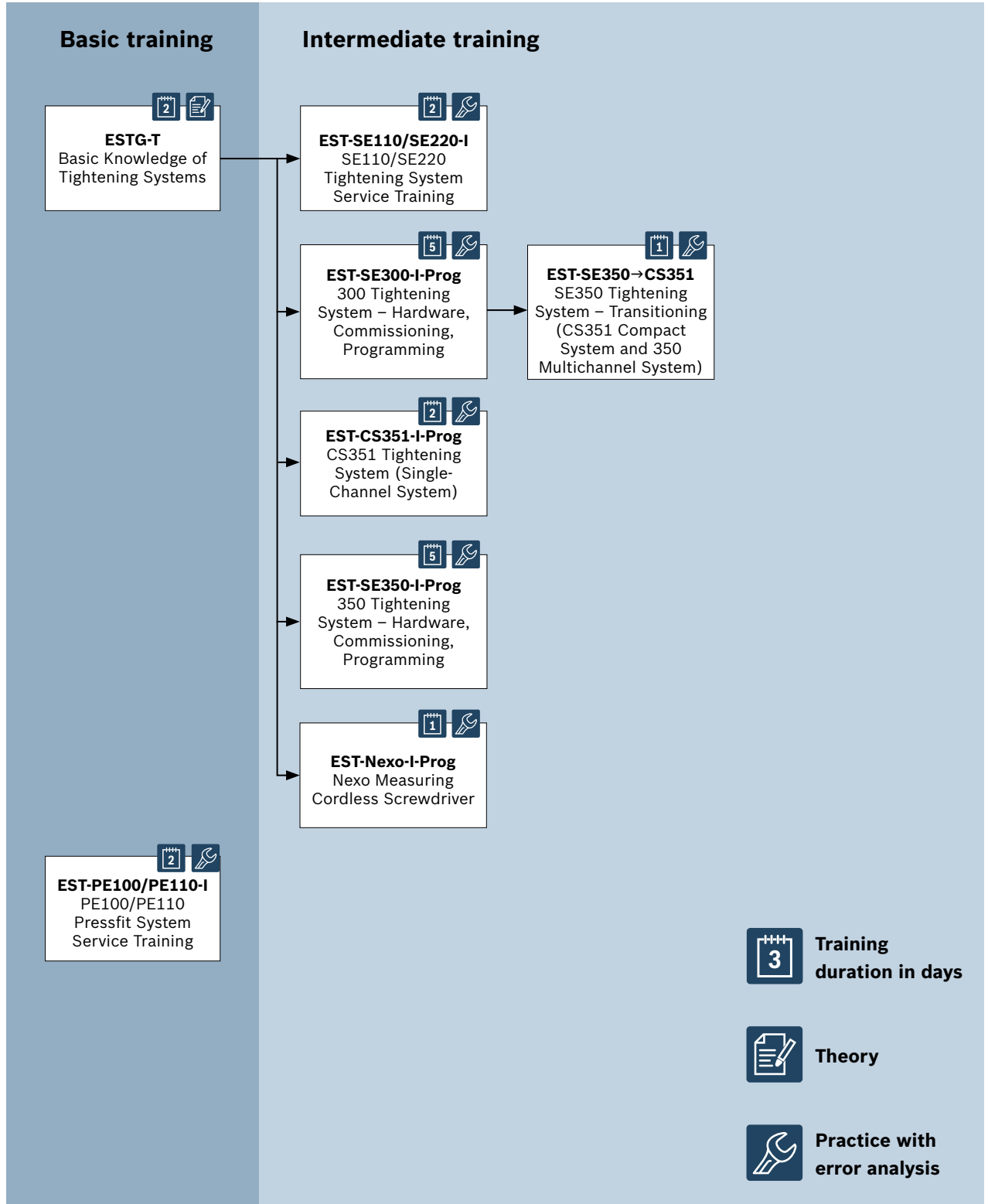
Electric Drives and Controls

Drive Technology – IndraDrive



Learning path

Electric Drives and Controls Tightening and Pressfit Systems



3 Training duration in days

Theory


Practice with error analysis

Learning path


Electric Drives and Controls


Resistance Welding


Basic training



ESTG-W
Basics of Resistance Welding Systems


Intermediate training


EST-BOS6000/PST-IProg
Programming and Servicing with PST + BOS6000



EST-BOS6000/PSI-IProg
Programming and Servicing with PSI6000 + BOS6000


EST-BOS6000/UI-IBIN
PSI6000 with UI Controllers and Servicing


EST-BOS6000/SZ-IBIN
Setting Up and Servicing PSI6000 with Integrated Servo Gun Control

 **Training duration in days**

 **Project planning**

 **Practice with error analysis**

Learning path

Electric Drives and Controls

MotionLogic (Drive-Based) – IndraMotion MLD

Basic training

ESTG-PLC
Basic Knowledge of PLC Technology

3 LW

Intermediate training

EST-IW/IL 2G-Prog
Programming with IndraWorks/ IndraLogic G2

5 LW

EST-IW/IL 1G→2G
Transitioning from IndraWorks/ IndraLogic G1 to IndraLogic G2

2 LW

EAT-ID-SERCOS
IndraDrive with sercos Interface – Commissioning and Axis Optimization

4 LW

EAT-ID MLDS/MLDM 2G-Prog
Programming IndraMotion MLD-S and MLD-M G2

NEW 3 LW

NEW	New training	LW	LearnWorld
3	Training duration in days		Project planning
	Tablet PC		Practice with error analysis

Learning path

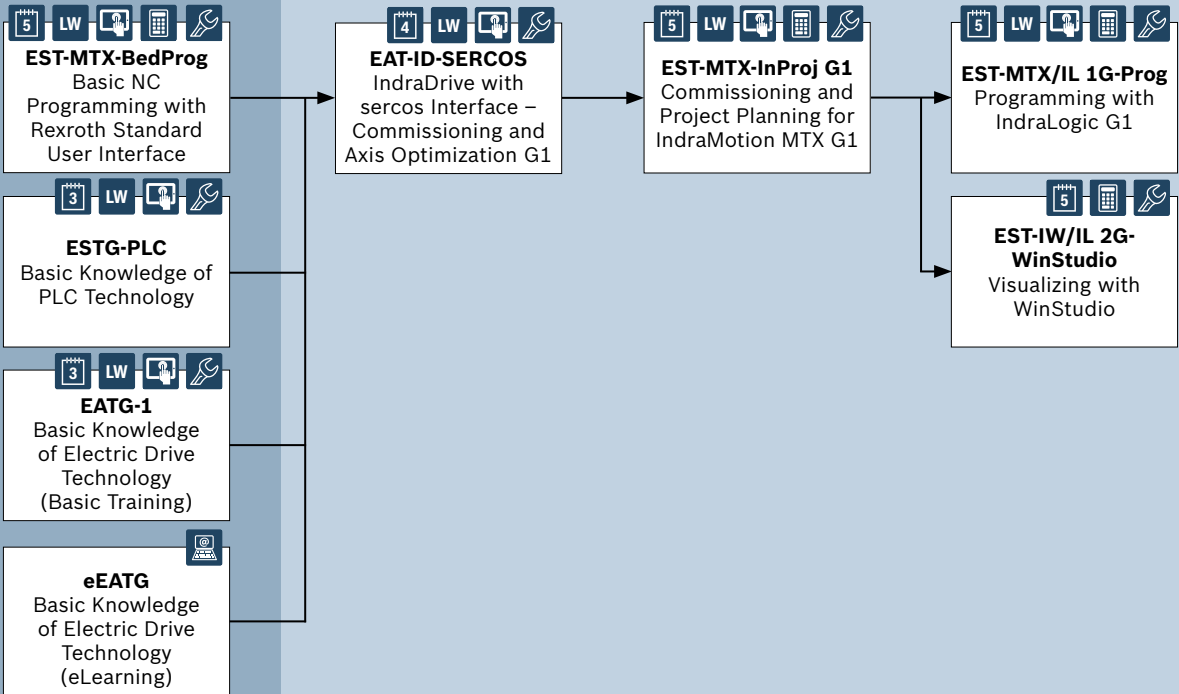
Electric Drives and Controls

CNC – IndraMotion MTX

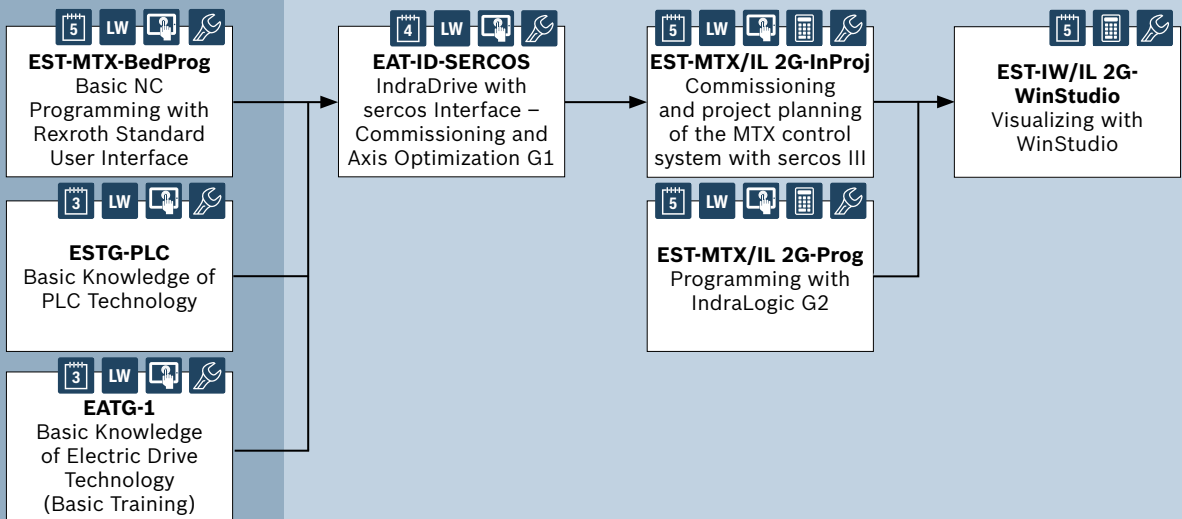
Basic training

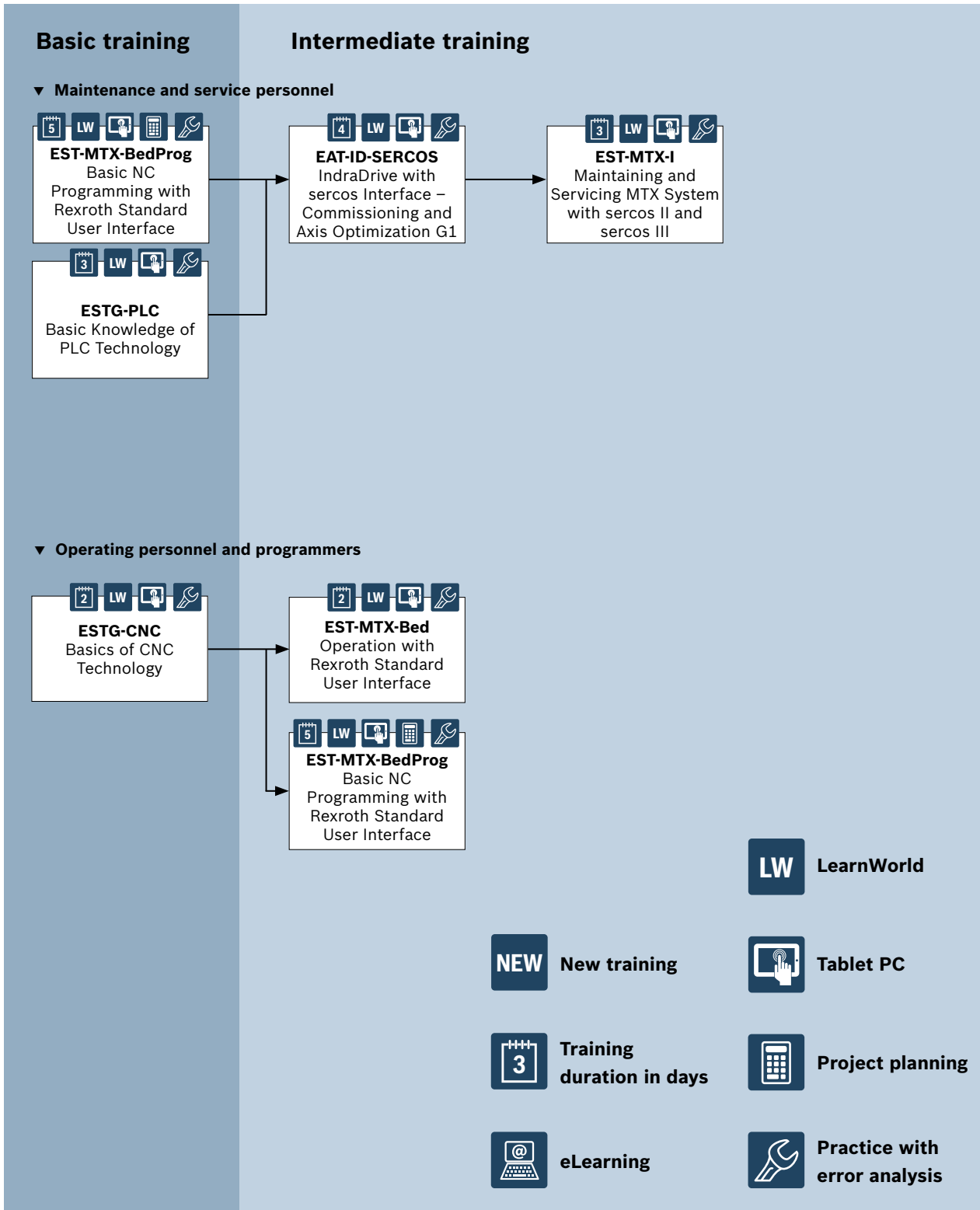
Intermediate training

▼ Commissioning technicians and project engineers (with sercos II – G1 = Generation 1)



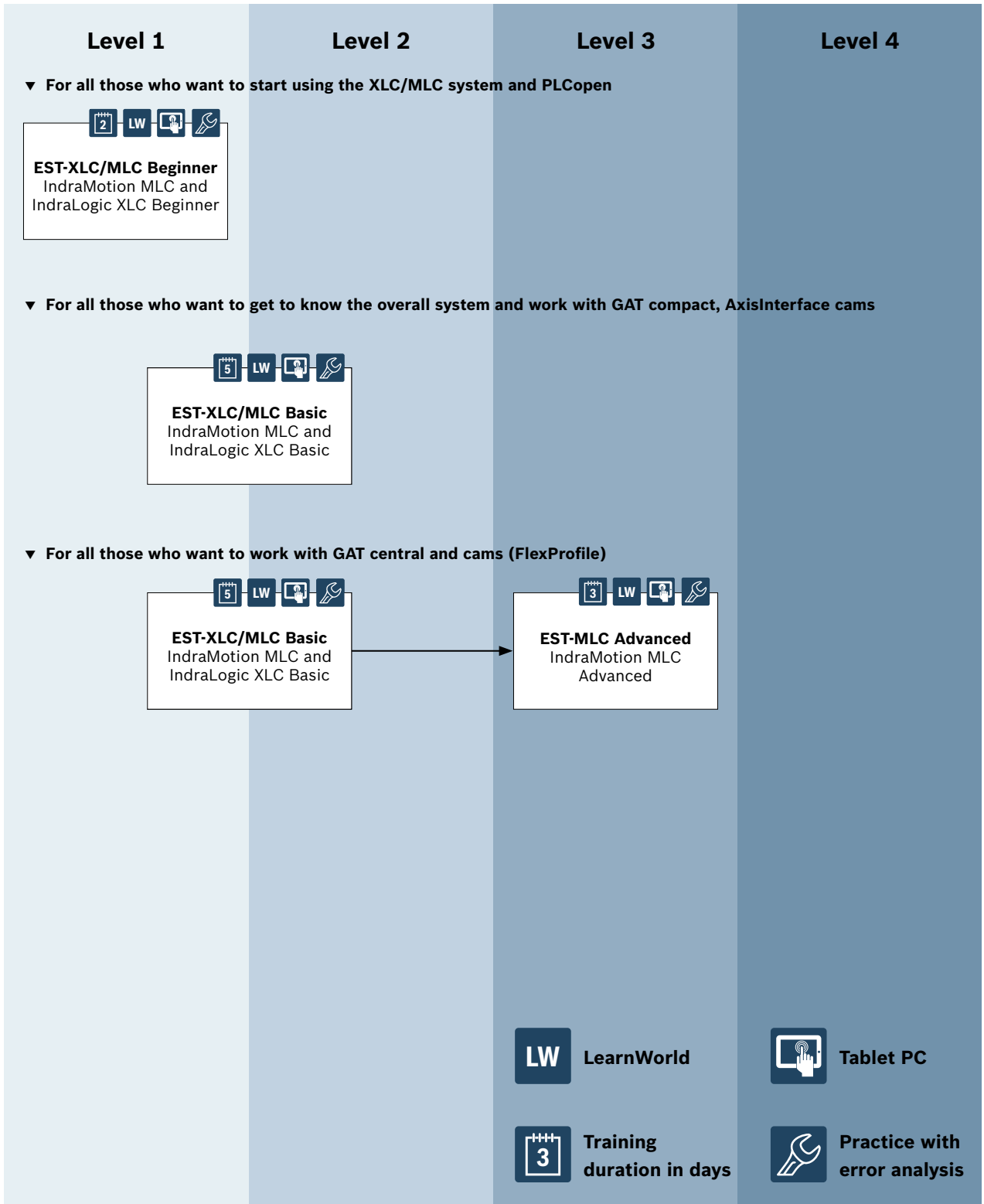
▼ Commissioning technicians and project engineers (with sercos III, L65 – G2 = Generation 2)





Learning path

Electric Drives and Controls IndraLogicXLC/IndraMotion MLC



Level 1	Level 2	Level 3	Level 4
<p>▼ For all those who have to maintain and exchange I/O modules and IndraDrive drives (control communication with XLC/MLC)</p>			
<p>EST-MLC-IMST IndraMotion MLC – Maintenance with IMST</p>			
	<p>EST-MLC-I IndraMotion MLC and IndraLogic XLC – Servicing</p>		
<p>▼ For all those who want to become familiar with the subject of Open Core Interface</p>			
<p>ESTG-OCI Basics of Open Core Engineering</p>	<p>EST-XLC/MLC-OCI-EASY Introduction to Open Core Interface</p>		
	<p>EST-XLC/MLC-OCI-WIN Windows Programming with Open Core Interface</p>		
		<p>NEW New training</p>	<p>LW LearnWorld</p>
		<p>3 Training duration in days</p>	<p>Tablet PC</p>
		<p>Theory</p>	<p>Practice with error analysis</p>

- General information
- eDrive & Control Academy
- Industrial Hydraulics
- Mobile Hydraulics/ Mobile Electronics
- Electric Drives and Controls**
- Pneumatics
- Mechatronics
- Linear Motion and Assembly Technology
- Safety Technology
- Energy Efficiency
- Applications
- Media

Learning path

Electric Drives and Controls

PLC – IndraWorks/IndraLogic

Basic training

Intermediate training

▼ IndraWorks (with IndraLogic G1 = Generation 1)

ESTG-PLC
Basic Knowledge of PLC Technology

EST-IW/IL 1G-I
Diagnostics and Troubleshooting with IndraWorks/ IndraLogic G1

EST-IW/IL 1G-Proj
PLC Project Planning with IndraWorks/ IndraLogic G1

ESTG-BUS
Basic Knowledge of Bus Technology

▼ IndraWorks (with IndraLogic G2 = Generation 2)

EST-IW/IL 1G→2G
Transitioning from IndraWorks/ IndraLogic G1 to IndraLogic G2

EST-IW/IL 2G-Prog-ST
Programming with IndraWorks/ IndraLogic G2

EST-IW/IL 2G-Prog
Programming with IndraWorks/ IndraLogic G2

EST-IW/IL 2G-SFC-DIAG
Sequencer Diagnostics G2

EST-IW/IL 2G-I
Diagnostics and Troubleshooting with IndraWorks/ IndraLogic G2

EST-IW/IL 2G-WinStudio
Visualization with WinStudio G2

EST-IW/IL 2G-Proj
PLC Project Planning with IndraWorks/ IndraLogic G2

NEW New training

LW LearnWorld

3 Training duration in days

Project planning

Tablet PC


Practice with error analysis


Learning path

Electric Drives and Controls

NYCe 4000


Basic training


NYCe 4000-IN/Prog
NYCe 4000 –
Engineering


NYCe 4000 LMS-IN/Prog
NYCe 4000 LMS –
Engineering

Special topics


NYCe 4000-I
NYCe 4000 –
Service and Support


NYCe 4000 LMS-I
NYCe 4000 LMS –
Service and Support



**Practice with
error analysis**

General
information

eDrive & Control
Academy

Industrial
Hydraulics

Mobile
Hydraulics/
Mobile
Electronics

Electric Drives
and Controls

Pneumatics

Mechatronics

Linear Motion
and Assembly
Technology

Safety
Technology

Energy
Efficiency

Applications

Media

Learning path

Electric Drives and Controls Sytronix

Basic training

HTG
Basic Knowledge of Hydraulics

4 LW Theory Practice with error analysis

eHTG
Basic Knowledge of Hydraulics (eLearning)

eLearning

e4EE
Basic Knowledge of Energy Efficiency (eLearning)

eLearning

e4EE Sytronix
Energy Efficiency of Variable-Speed Pump Drives (eLearning)

eLearning

Intermediate training

EAT-ID-I
IndraDrive – Diagnostics and Servicing

3 LW Theory Practice with error analysis

EAT-ID-SERCOS
IndraDrive with sercos Interface – Commissioning and Axis Optimization G1

4 LW Theory Practice with error analysis

EAT-ID-PROFI
IndraDrive with PROFIBUS Interface – Commissioning and Axis Optimization G1

4 LW Theory Practice with error analysis

HTPPu
Hydraulics Training – Pumps

3 LW Theory Practice with error analysis

Special topics

EH-SYT_SvP_IN@
Sytronix SvP – Parameterization and Commissioning

2 Theory Practice with error analysis

EH-SYT_FcP_IN@
Sytronix FcP – Parameterization and Commissioning

2 Theory Practice with error analysis

EH-SYT_SvP_I@
Sytronix SvP – Diagnostics and Servicing

3 Theory Practice with error analysis

EH-SYT_FcP_I@
Sytronix FcP – Diagnostics and Servicing

2 Theory Practice with error analysis



Blended learning



LearnWorld



Theory



Training duration in days



eLearning



Tablet PC



Practice with error analysis