

A photograph of a modern university library interior. The space is bright and open, featuring a light-colored wood floor and a white ceiling. In the foreground, several dark blue chairs with casters are arranged around dark wood tables. A laptop is open on one of the tables. In the background, there is a long white counter with a wooden top, labeled "INFORMATION". To the right, a large wooden staircase with a white railing leads to an upper level. Bookshelves filled with books are visible on the right side. A green square overlay in the upper center contains the text "HON." and "LEARNING".

HON.
LEARNING

Higher Education

LEARNING WITHOUT BOUNDARIES

Common areas. Makerspaces. Libraries and hallways. Today's students are learning together, working in groups and interacting with instructors. New tools and teaching methods enable learning to happen anywhere, at any time. For campuses to evolve, they must encourage and support a community of learning through meaningful connections between students, faculty, and administrators. HON's furniture is designed to support the shift in how people learn and foster connections that help students, faculty, and administrators succeed.



Classrooms		Faculty	18
Lecture	4	Administrative	20
Group	6	At A Glance	22
Makerspace	8	Fabrics & Finishes	26
Libraries	10	Warranty	27
Media Labs	12		
Commons	14		
Cafés & Dining Halls	16		





LECTURE CLASSROOMS

Inspired by HON color palette Diplomat

ATTENTION, PLEASE

Two critical factors affecting a student's learning are focus and engagement. In lecture settings where students are typically more passive participants, HON furniture delivers the comfort students need, enables focus, and supports multiple learning styles. Casters quickly transform a space from attentive to collaborative. Stacking chairs and nesting tables maximize footprints and support varying class sizes and layouts. HON gives educators the versatility and comfort needed to keep students alert and involved.



Featured Products
Solve Task Chair,
Ignition Multi-purpose
Chair, Motivate Height-
Adjustable Table, and
Huddle Nesting Tables.





GROUP CLASSROOMS

AMP UP THE ENTHUSIASM

As instructors evolve their teaching techniques to prepare the next generation for careers, the classroom has adapted to reflect real world settings. Active learning spaces move beyond conventional in favor of a dynamic, interactive style that teaches the skills that employers value. Mobile whiteboards, integrated technology, and versatile tables work together to support group participation, technology presentations and hands-on instruction.



Inspired by HON color palette Tranquility

Featured Products
 Motivate Presentation Cart,
 Nesting/Stacking Chairs, and
 Build Ribbon Table.





MAKERSPACE

Inspired by HON color palette Splash

MAKE WAY FOR MAKING

Learning through the process of making puts an emphasis on tinkering over lecturing. Today's students are getting more real-world experience creating solutions, exploring new ideas and deconstructing things in makerspaces. Supporting these kinetic hands-on activities requires a different set of tools, such as adaptable storage, tables and mobile whiteboards that bring students closer to their work. HON takes pride in creating practical makerspaces that prepare our next generation of workers.



Featured Products
Flock Lounge Chair,
Collaborative Table with Power,
Build Rectangular Table,
Motivate Stacking 4-leg Chairs
and Mobile Markerboard.



A photograph of a modern library interior. The space is multi-level, featuring a mezzanine level with yellow chairs and tables. The ground floor has a wooden floor, white walls, and a large staircase. There are several tables and chairs, including blue armchairs and white tables with green chairs. Bookshelves are visible on the right side. A purple diamond shape is overlaid on the left side of the image, containing the word "LIBRARIES".

LIBRARIES

GO AHEAD, TALK IN THE LIBRARY

Shhhh! Don't tell this generation that libraries are solely places for quiet reflection and whispering. Study breaks between classes. Evening collaborative work and social interaction. Individual study to prepare for exams. Libraries now support a variety of activities throughout the day with spaces ranging from comfy lounges to individual workstations to group settings. This requires integrated power for charging devices, presentation aids to transfer knowledge, and most importantly, arrangements that help students accomplish more, alone and together.



Inspired by HON color palette Wheat



Featured Products
 Grove 1-Seat, Arrange
 Table, Flock Mini
 Cylinder, and Preside
 Collaborative Table.





MEDIA LABS

Inspired by HON color palette Balance

JOIN THE MOVEMENT

The movement toward multi-functional computer labs requires a shift in furniture selection. Gone are the days of long rows of tables supporting monitors. Adapting to this new age of technology integration, campuses are now supporting a variety of learning styles, including individual focus, peer-to-peer learning, group work and guided instruction. With students spending extended time in media labs, institutions are also considering how students can be more active during computer work to improve their comfort, focus and well-being.

Computer lab reserved
from 2-4 for
Intro to Design



Featured Products
Solve Task Chair,
Coordinate Height-
Adjustable Base,
Dual Monitor Arm.





COMMONS

Inspired by HON color palette Hearth

THE RHYTHM OF LEARNING

Studies show that nearly 90% of learning happens outside the classroom, making common areas, hallways, and other gathering places vital to the learning process. Comprised of change-of-pace lounges, varying-height tables, chairs and stools, these spaces provide a comfortable place for people to put their feet up, huddle up and power up. HON's versatile collection of commons furniture is designed to help students and faculty meet, focus, relax and accomplish more.



Featured Products
Flock Collaborative Cube
Table with Tablet, Grove
2-Seat with Table, Flock
Square Ottoman and
Arrange Table.





CAFÉS &
DINING HALLS

Inspired by HON color palette Wheat

FOOD FOR THOUGHT

Meals are no longer the only thing served in dining halls. For every entrée ordered, there's a side of group study and collaboration. These magnetic areas attract students and faculty with a mix of table settings that can be pulled together to support a variety of interpersonal studies. Understanding that durability and cleanliness are critical, HON places an emphasis on scratch-, stain-, and spill-resistant laminate finishes and seating with durable fabric selections and wipeout areas that can be easily cleaned. Whether grabbing a bite or getting the group together, cafés and dining halls are becoming the most popular campus hot spots.



Featured Products
 Accommodate Stool,
 Arrange Table, Motivate
 4-Leg Stacking Chairs and
 Flock Lounge Chair.





FACULTY

Inspired by HON color palette Butterscotch

MORE PRODUCTIVE OFFICE HOURS

A well-designed faculty space supports an instructor's need to focus on private work, as well as meet with students and colleagues. This requires desks that accommodate any layout and give guests the worksurface space they need to communicate effectively. Comfortable guest and task seating welcome visitors and put everyone at ease. Because office space is at a premium, vertical storage solutions help maximize footprints. With HON, you can create a space that fits your campus, culture and personal workstyle.



Featured Products
Endorse Task Chair,
Coordinate Height-
Adjustable Base,
Accommodate Casual
Guest Chair and
Contain Storage.





ADMINISTRATIVE

Inspired by HON color palette Chianti

HARDER WORKING SPACES

Administrative areas are the information center of a campus. These dynamic individual and teaming spaces support the day-to-day business of a university, which requires a lot of organization and easy access to active and archival storage. Pull up a chair. Have a discussion over a shared worksurface. Instantly gain access to the files needed to resolve an issue. That's how a well-run administrative area stays ahead of the curve.



Featured Products
 Ignition Task Chair, 10500
 Series Desk, Contain
 Mobile Pedestal, Ignition
 Multi-purpose Chair and
 Contain Storage Tower.



AT A GLANCE

LEARNING COLLECTIONS

HON saw today's evolved learning space coming years before it arrived. We did it by understanding the most effective teaching methods, then investigating how smarter spaces could enhance learning. So we designed affordable chairs, tables, lounge, desk and storage collections that were more in tune with both teacher and student needs. That provided great versatility and encouraged stronger collaboration. When your facilities can do all that, you'll achieve a higher level of learning.

TASK & GUEST CHAIRS



ENDORSE
TASK CHAIR



IGNITION
TASK CHAIR



NUCLEUS
TASK CHAIR



CERES
TASK CHAIR



SOLVE
TASK CHAIR



MOTIVATE
TASK CHAIR



PURPOSE
TASK CHAIR



SMARTLINK
4-LEG CHAIR



MOTIVATE
4-LEG STACKER



ACCOMMODATE
GUEST CHAIR



IGNITION
MULTI-PURPOSE CHAIR



FLOCK
CASUAL LOUNGE
CHAIR

STOOLS & MULTIPURPOSE CHAIRS



SMARTLINK
TASK SWIVEL STOOL



FLOCK
4-LEG STOOL



ACCOMMODATE
COUNTER HEIGHT
STOOL



ACCOMMODATE
CAFÉ HEIGHT STOOL



NUCLEUS
CAFÉ HEIGHT STOOL



IGNITION
CAFÉ HEIGHT STOOL



MOTIVATE
COUNTER HEIGHT
STOOL



MOTIVATE
CAFÉ HEIGHT STOOL

COLLABORATIVE & PUBLIC SPACES



FLOCK
ROUND LOUNGE CHAIR



FLOCK
SQUARE LOUNGE CHAIR



FLOCK
MODULAR END



FLOCK
MODULAR CHAIR



FLOCK
OTTOMAN



GROVE
1-SEAT LOUNGE CHAIR



GROVE
2-SEAT LOUNGE CHAIR



GROVE
2-SEAT W/ TABLE LOUNGE CHAIR



GROVE
3-SEAT LOUNGE CHAIR



FLOCK
MINI SQUARE



FLOCK
MINI SQUARE
W/ HARD TOP



FLOCK
MINI SQUARE
W/ CASTERS



FLOCK
MINI CYLINDER



FLOCK
MINI CYLINDER
W/ HARD TOP



FLOCK
MINI CYLINDER
W/ CASTERS

TABLES



BUILD
ARC TABLE



BUILD
HALF-ROUND TABLE



BUILD
RIBBON TABLE



BUILD
KITE TABLE



BUILD
WISP TABLE



BUILD
RECTANGLE TABLE



BUILD
ROUND TABLE



BUILD
SQUARE TABLE



BUILD
TIDE TABLE



BUILD
SNAP TABLE



BUILD
TRAPEZOID TABLE



BUILD
DART TABLE



BUILD
DART NESTING TABLE



MOTIVATE
HEIGHT-ADJUSTABLE
TABLE



HUDDLE
RECTANGLE TABLE



UTILITY
RECTANGULAR
TABLE



ARRANGE
RECTANGULAR TABLE
30\"/>



ARRANGE
SOFT SQUARE TABLE
30\"/>



ARRANGE
SQUARE TABLE
30\"/>



ARRANGE
ROUND TABLE
30\"/>



PRESIDE
COLLABORATIVE TABLE
SEATED HEIGHT



PRESIDE
COLLABORATIVE TABLE
STANDING HEIGHT



FLOCK
COLLABORATIVE
TABLE W/ TABLET



FLOCK
COLLABORATIVE
TABLE

ACCESSORIES



MOTIVATE
PRESENTATION CART



PRESIDE
LECTERN



MOBILE MARKERBOARD



SMARTLINK
WHITEBOARD



MONITOR ARMS
DUAL

DESKS & WORKSTATIONS

AT A GLANCE



VOI



10700 SERIES



10500 SERIES



38000 SERIES



CONCINNITY



SMARTLINK
TEACHER STATION



SMARTLINK
MOBILE METAL DESK



COORDINATE
STANDING-HEIGHT BASE



MENTOR



ABOUND



ACCELERATE

STORAGE



310 SERIES
VERTICAL FILES



FLAGSHIP
LATERAL FILES



BRIGADE
700 SERIES
LATERAL FILES



BRIGADE
600 SERIES
LATERAL FILES



FLAGSHIP
BOOKCASES



BRIGADE
STEEL BOOKCASES



BRIGADE
600 SERIES
SHELF FILES



BRIGADE
STORAGE CABINETS



FLAGSHIP
FILE CENTERS



CONTAIN
TOWERS

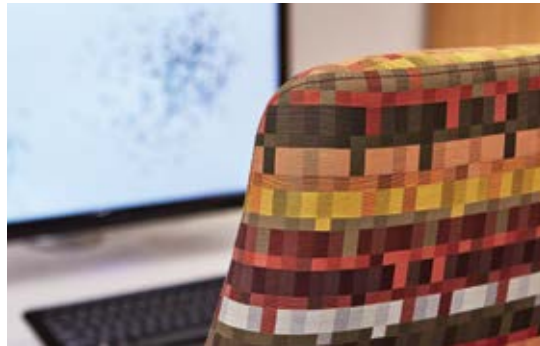


CONTAIN
CREDENZAS



CONTAIN
PEDESTALS

FABRICS & FINISHES



GREATER EXPECTATIONS

Material selections set the tone for your campus and help you maintain brand consistency. HON offers a diverse collection of durable and attractive fabrics and finishes that will stand the test of time, both structurally and aesthetically. From classic colors to distinctive patterns, it's all about creating a look that's uniquely you, while allowing for easy cleaning and maintenance. HON's scratch-, stain-, and spill-resistant laminate finishes are built to withstand the demands of any student body, and can be quickly wiped down at the end of the day. When putting the finishing touches on your furniture order, get the best HON has to offer.



YOUR HON FULL LIFETIME WARRANTY

Every time you purchase a HON product, you're making an investment in your future. We're proud to play a part in that future, and you can trust us to do our best for as long as you need us.

The HON Full Lifetime Warranty is our assurance to you that the HON desks, workstations, seating, tables, or storage you purchase will be free from defective material or workmanship for the life of the product.

In the unlikely event that any HON product or component covered by the HON Full Lifetime Warranty should fail under normal workplace use as a result of defective material or workmanship, HON promises to repair it. If we are unable to repair it, we will replace it with comparable product or, if you prefer, we will refund your purchase price.

WHAT'S COVERED BY THE HON FULL LIFETIME WARRANTY?

Your HON Full Lifetime Warranty applies to product manufactured after January 1, 2011. All HON product lines, materials, and components are covered by your HON Full Lifetime Warranty except for the items described below.

The specific product lines, materials, and components listed below are covered under HON's Full 12-Year, Full 10-Year, and Full 5-Year Warranties (from date of purchase).

HON'S FULL 12-YEAR WARRANTY

- Electrical components (LED task lights, lamps and ballasts are not covered)
- Seating ilira®-stretch
- Seating controls
- Pneumatic cylinders
- Wood seating
- Accessories
- Laminate Surfaces
- Veneer Surfaces

HON'S FULL 10-YEAR WARRANTY

- Soothe™ Patient Recliner Mechanism

HON'S FULL 5-YEAR WARRANTY

- All LED task lights
- Panel and seating textiles
- Electric Height Adjustable Bases (Including Memory Control)
- Directional™ Desktop Sit-to-Stand
- Soothe™ Patient Recliner Central Lock Mechanism
- Soothe™ Patient Recliner Pivoting Arm

These warranties apply to HON products sold within the United States of America, U.S. Territories, and Canada, as well as U.S. Military and Federal Agency purchases (regardless of location).

WARRANTY

IS ANYTHING NOT COVERED?

There are a few exclusions to the HON Full Lifetime Warranty and to the 12-, 10-, and 5-year warranties. These exclusions are:

- All *basyx* by HON® products (these products are covered under a separate *basyx* by HON® warranty).
- Color-fastness or matching of colors, woodgrains, or textures occurring in wood, leather, or other materials that naturally exhibit inherent color variations.
- Customer's own materials (COM) selected by and used at the request of a user.
- Modifications or attachments to the product that are not approved by The HON Company and product failures resulting from such modifications or attachments.
- Product normal wear and tear, which is to be expected over the course of ownership.
- Products that were not installed, used, or maintained in accordance with product instructions and warnings.
- Products used for rental purposes.
- Damage caused by cleaning chemicals.
- Dye transfers caused by external contaminants (including clothing and accessory dyes such those used on denim jeans) may migrate to lighter colors. This phenomenon is increased by humidity and temperature and is irreversible.

WARRANTY REQUESTS OR QUESTIONS?

Your HON dealer is our mutual partner in supporting your warranty requests. To obtain service under this warranty, please contact your HON dealer. If you are not sure who your dealers, please call HON Customer Support at 800.833.3964.

THAT'S YOUR HON FULL LIFETIME WARRANTY. AS AN OWNER OF HON PRODUCT, THE WARRANTY EXPLAINED HERE IS YOUR SOLE AND EXCLUSIVE REMEDY. THERE ARE SOME EXCEPTIONS IF YOU PURCHASED THE PRODUCT FOR HOME OR PERSONAL USE WHICH ARE EXPLAINED BELOW. TO THE EXTENT ALLOWED BY LAW, THE HON COMPANY MAKES NO OTHER WARRANTY, EITHER EXPRESSED OR IMPLIED, INCLUDING ANY WARRANTY OF MERCHANTABILITY OR FITNESS FOR A PARTICULAR PURPOSE. THE HON COMPANY WILL NOT BE LIABLE FOR ANY CONSEQUENTIAL OR INCIDENTAL DAMAGES.

A WORD ABOUT PURCHASES FOR HOME OR PERSONAL USE

Please note, this section only applies if you purchased your HON product for your home or for your own personal or family use. HON's warranties give you specific legal rights and you may have other rights, which vary from state to state. As a consumer purchaser, the complete exclusion of implied warranties noted in the above paragraph does not apply to you, however, to the extent allowed by applicable state law, the implied warranties are limited to the applicable term of the warranty. Some states do not allow the exclusion or limitation of incidental or consequential damages, so the above exclusion or limitation may not apply to you.

GROVE™



MOTIVATE®



HON®

The HON Company
200 Oak Street,
Muscatine, IA 52761
800.833.3964
hon.com/learning

To view the registered and unregistered trademarks owned and used by The HON Company, visit hon.com/protected-marks. Models, upholstery and finishes are subject to change without notice.

© 2017 The HON Company. Form No. H4976 (4/17)

BUILD™

