

LED Lighting

LumeLEX • SuperSPOT • LPW8 • Retrofit
• Projector/Blacklights • Accessories



Lighting Services Inc





Lighting Services Inc has been producing the finest quality Track, Accent and Display Lighting Systems since 1958.

Since 1958, we have been part of an extraordinary revolution in architectural lighting - not just in the technical aspects of the industry, but also in the expectations of people all over the globe to experience the positive effects that exceptional lighting can bring.

As the premier independent manufacturer of track, accent, display and LED lighting systems, it is our reputation for creativity and innovation that is unrivalled in our industry. It is our continued commitment to these principals, which makes LSI the manufacturer of choice among the most discriminating specifiers of lighting. Our specification grade track and fixtures are backed by an industry leading 12-year warranty.

Our commitment for the future is to support the lighting community, and the global markets that we touch. With the development of new technologies and sustainable manufacturing processes, we will reduce our impact on the environment, while at the same time, increasing the availability of high quality lighting solutions. We will also continue our support of industry groups such as the IALD, LIRC, IES, and the AIA/CES program, to foster awareness of excellence in lighting. As the examples on the following pages illustrate, Lighting Services Inc is prepared to enrich and conserve your exhibits in the best possible light.





Kimbell Art Museum
Piano Pavilion
Fort Worth, TX
Lighting Design: ARUP Lighting

LumeLEX Cylinder Series



LumeLEX 2044 Series



LumeLEX 2047 Series



LumeLEX 2048 Series



LumeLEX 2088 Series



LumeLEX 2020 Series



LumeLEX 2038 Series



LumeLEX 2030 Series



LumeLEX 2031 Series



LumeLEX 2084 Series



LumeLEX 2087 Series

The LumeLEX Cylinder Series are clean, elegant, stem mounted fixtures which were developed specifically for the most demanding accent and display lighting applications.

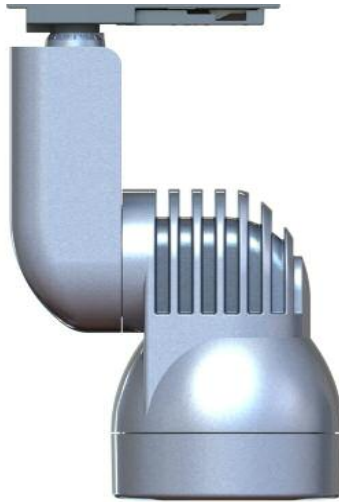
The latest addition to the LumeLEX Cylinder Series is the LumeLEX 2020 which produces a true 4 degree beam with output of over 26,000 CBCP from just 5 watts. For maximum versatility, many of the LumeLEX Cylinder Series are available in four formats: Xicato XTM (19mm), Xicato XTM (9mm), Dim to Warm and Lumenetix. The LumeLEX Cylinder Series offers lumen packages up to 5000 lumens, flexible beam control, optional on-board dimmer and a full range of internal accessories for manipulating the distribution of light. LumeLEX Series fixtures are available in Black, White and Silver finishes.

LumeLEX Series Line:	Delivered Lumens (Up To)	Watts (Up To)
LX2020 Spotlight	250	5
LX2030 Spotlight	700	14
LX2031 Wall Wash	733	14
LX2038 Fixed Pendant	700	14
LX2044 Spotlight	2241	23
LX2047 Wall Wash	1700	23
LX2048 Fixed Pendant	2241	23
LX2084 Spotlight	3818	59
LX2087 Wall Wash	2550	39
LX2088 Fixed Pendant	3818	59



Grace Church
Brooklyn, NY
Lighting Design: Tillett Lighting Design Associates, Inc.

LumeLEX Spotlight Series



LumeLEX 2060 Series



LumeLEX 2024 Series



LumeLEX 2026 Series

The LumeLEX Spotlight Series with Xicato Technology are uniquely styled fixtures designed as the most integrated, thermally efficient fixtures for LED modules up to 3850 lumens.

This series includes the widest range of optics and accessories available in both standard (83 CRI) and high (98 CRI) ranges. For maximum versatility, the LumeLEX Spotlight Series are available in four formats: Xicato XTM (19mm), Xicato XTM (9mm), Dim to Warm and Lumenetix. The LumeLEX Spotlight Series is available in Black, White and Silver finishes.

LumeLEX Series Line:	Delivered Lumens (Up To)	Watts (Up To)
LX2060 Spotlight	2876	33
LX2024 Spotlight	2241	23
LX2026 Spotlight	3196	33



Chicago Bears, Halas Hall
Chicago, IL
Lighting Design: Anne Kustner Lighting Design

SuperSPOT Series



LP1 Series



LP2 Series



LP4 Series

The LP SuperSPOT Series LED fixtures are a line of super high power, super focused LED luminaires designed specifically for long throw, tight beam applications. The LP1 and LP2 Series are available with 4°, 12° and 25° beam spread optics. The LP4 Series is available with 10°, 25°, 40° and 60° beam spread optics.

Designed to take the place of aging technologies from PAR36 through PAR64 low voltage sources, these efficient, super high power LED fixtures can produce 90,000 - 180,000 CBCP, rivaling the most powerful sealed beam technologies.

LP SuperSPOT Series fixtures are available in Black, White, and Silver finishes.

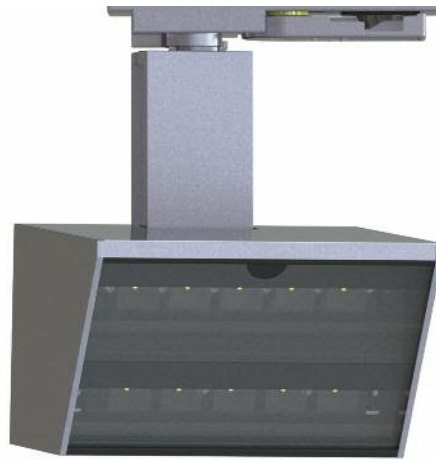
LP SuperSPOT Series Line:	Delivered Lumens (Up To)	CBCP (Up To)	Watts
LP1 SuperSPOT Series	990	90,000	15
LP2 SuperSPOT Series	1980	180,000	30
LP4 SuperSPOT Series	6,800	90,000	80



on't need another hero



LPW8 Wall Wash Series



LPW8 Series

The LPW8 Series is a state of the art, elegant, stem mounted wall wash fixture powered by COB LED technology. Utilizing an asymmetric TIR optic, the LPW8 produces 2725 lumens (36 watts) of a seamless, even wash of light for the most demanding applications of museum and retail lighting.

The LPW8 Series features a discreetly hidden integral driver which is compatible with trailing edge electronic low voltage dimmers (dimnable to 5%). COB LED panel and driver are field replaceable. Optional integral dimming allows for individual fixture control.

The LPW8 Wall Wash Series fixtures are available in Black, White, and Silver finishes.

LPW8 Wall Wash Series Line:	Delivered Lumens (Up To)	Watts
LPW8 Wall Wash Series	1194	36

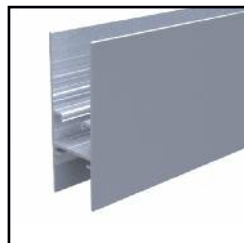


Teknion
Toronto, ONT
Lighting Design: HH Angus & Associates Ltd.

Gemini Series



Gemini Module



Gemini Housing

The LSI Gemini Series is a suspended lighting fixture that combines the versatility of LSI Track along with the functionality of an indirect LED lighting system utilizing Xicato XTM (19mm) modules. It can be specified in 4-foot, 8-foot or 12-foot sections with a variety of track selections. The Gemini Series can also be easily joined together to make continuous straight runs or grid configurations of efficient indirect uplight with either 1 or 2 Circuit 120/277V track below. Plug and play Gemini modules create an extremely flexible uplight system.

The Gemini Series features a discreetly hidden integral driver which is compatible with reverse phase (ELV compatible) dimmers (dimmmable to 5%). All LumeLEX modules are field replaceable.

Gemini Series fixtures are available in Black, White, and Silver finishes.

Gemini Series:	
Gemini Module	Xicato XTM (19mm) module, 13-20 Watts
Gemini Housing	4', 8' or 12' Straight Runs or Grid Configurations



GRAMMY Museum Mississippi
Cleveland, MS
Lighting Design: Available Light

Retrofit Series



SSLCX16 Series



SSLCX30 Series



SSLCX36 Series
SSLCX38 Series



SSL230 Series



SSL236 Series
SSL238 Series



SSLGR16 Series



SSLGR36 Series



SSLGR30 Series



SSLGR38 Series

With the recent explosion of LED retrofit or replacement lamps flooding the market, there is a distinct need for thoughtful fixture design to incorporate those lamp types in a responsible way. The SSL Series allows the specification of PAR and MR16 LED lamp technology with a level of assurance that the thermal, electrical, and even physical aspects of this new technology have been considered. SSL Series fixtures are available in Black, White, and Silver finishes.

Retrofit Series Line:	Retrofit Lamp
SSLCX16 Series Spotlight SSLGR16 Series Gimbal Ring	MR16 LEDs (GU5.3 base)
SSLGR16 Series Gimbal Ring	MR16 LEDs (GU10 base)
SSL230 Series Spotlight SSLCX30 Series Spotlight SSLGR30 Series Gimbal Ring	PAR30 LEDs, medium screw base, short neck
SSL236 Series Spotlight SSLCX36 Series Spotlight SSLGR36 Series Gimbal Ring	PAR36 / AR111 LEDs
SSL238 Series Spotlight SSLCX38 Series Spotlight SSLGR38 Series Gimbal Ring	PAR38 LEDs, medium screw base



**Walt Disney World, Animal Kingdom,
Pandora, Na'vi River Journey**
Lake Buena Vista, FL
Lighting Design: Walt Disney Imagineering

Projector/Blacklight Series



BPM Series



UV8 Series



UV90 Series

The BPM Series is a petite, architecturally designed LED Image Projector. At 12" in length, the BPM is a high performance instrument with 14,000+ CBCP at 20 watts. Featuring uncompromising optical quality, the BPM projects high resolution black and white images, as well as single and multi-color patterns.

Ideal for themed environments, the Lighting Services Inc Blacklight Series is specifically designed for producing vibrant, high intensity focused Ultra Violet light to illuminate materials that fluoresce.

Projector/Blacklight Series	Wattage
BPM Image Projector	20 Watts
UV8 Blacklight	15 Watts
UV90 Blacklight	50 Watts

windows inspired by

Madama Butterfly

The Metropolitan Opera

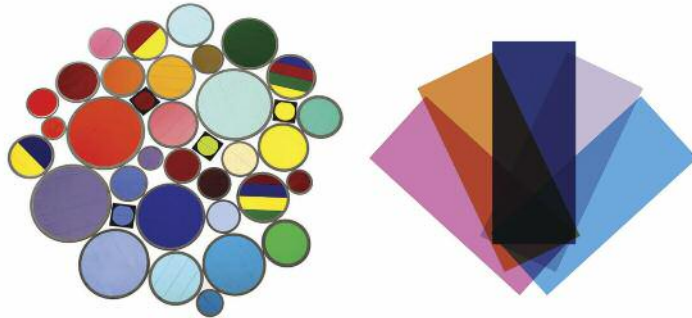
September 25 - November 18



Production by Anthony Minghella and
Costume design
Set design by

Saks Fifth Ave
New York, NY
Lighting Design: Saks Fifth Ave

Accessories



Color Filters and Gels



Optics



Spread Lens

LSI offers the largest variety of lighting accessories in the industry, products whose innovative design and proven functionality is based on decades of experience. The premise on which these products are offered is simple: pure light in a space is not enough. Designers must be able to customize and control the lighting in ways such as reducing glare, adding color, modifying beam spreads and changing intensities. LSI accessories such as those seen here enable the creative manipulation of light to fit individual situations, spaces and needs.



Hoods



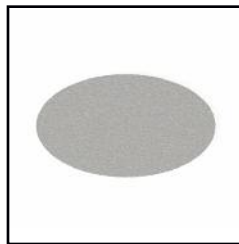
Cross Baffles



Louvers



Light Blocking Screens



Spread & Beam Softener Gels



Lighting Services Inc
2 Holt Drive
Stony Point, NY 10980-1996
Tel: +1 845.942.2800
Fax: +1 845.942.2177

www.LightingServicesInc.com
www.LightingServicesInc.co.uk

Notable LED Installations

Academy Museum of Motion Pictures, Los Angeles, CA Amazon Headquarters, Seattle, WA American Museum of Natural History, New York, NY Audrain Museum, Newport, RI Barney's, Beverly Hills, CA Beaty Biodiversity Museum, Vancouver, BC CBS Control Room, New York, NY Centre Culturel, Drummondville, QC Children's Discovery Museum, San Jose, CA Columbia University, New York, NY Columbus Museum of Art, Columbus, OH Corning Museum of Glass, Corning, NY DeWitt Wallace Gallery, Williamsburg, VA Disneyland Paris, Ratatouille Restaurant, Paris, France Disneyland Paris, Star Tours, Paris, France Disney World, EPCOT, Test Track, Lake Buena Vista, FL Disney World, Hollywood Studios, Star Tours: The Adventures Continue, Lake Buena Vista, FL Ferragamo NY Showroom, New York, NY Field Museum, Chicago, IL Franklin Institute, Philadelphia, PA Gerald Ford Museum, Grand Rapids, MI Grammy Museum Mississippi, Cleveland, MS Harley Davidson Museum, Milwaukee, WI Indian Heritage Center, Singapore International Spy Museum, Washington DC Kimbell Art Museum, Ft. Worth, TX LDS Church History Museum, Salt Lake City, UT Marciano Art Foundation, Los Angeles, CA Metropolitan Museum of Art, New York, NY Microsoft, Seattle, WA Milwaukee Public Museum, Milwaukee, WI Minnesota History Center, St. Paul, MN Musee-Baie-St. Paul, Baie-Saint-Paul, QC Museum of History and Industry, Seattle, WA Museum of the Bible, Washington DC Museum of the Moving Image, New York, NY Natural History Museum of Los Angeles County, Los Angeles, CA National Blues Museum, St. Louis, MO National September 11 Memorial Museum, New York, NY National WWII Museum, New Orleans, LA NBC - Universal, Universal City, CA New York State Museum, Albany, NY Norton Simon Museum, Pasadena, CA Pro Football Hall of Fame, Canton, OH San Francisco Museum of Modern Art, San Francisco, CA Smithsonian Institution Museum of Natural History, Washington, DC Smithsonian Institution National Museum of African American History and Culture, Washington, DC Smithsonian Institution National Museum of the American Indian, Washington, DC Smithsonian Institution National Portrait Gallery, Washington, DC Sotheby's Headquarters, New York, NY Telus World of Science, Calgary, AB Tiffany & Co., New York, NY USC Information Sciences Institute, Marina Del Rey, CA Warner Bros DC Entertainment, Huntington Beach, CA Whitney Museum of American Art, New York, NY Witte Museum, San Antonio, TX Yale University Art Gallery, New Haven, CT