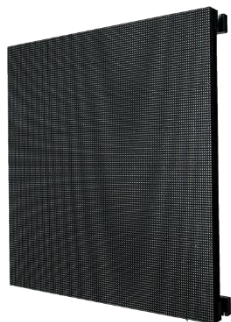
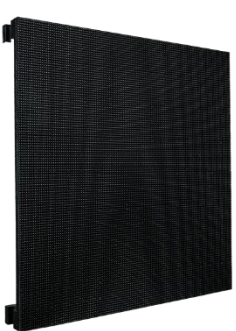


LED SCREENS / ELITE 3.9



— CURVE ACCESSORIES AVAILABLE —

- Power supply: 90~264 V AC, 50/60 Hz ~
- Average power consumption: 233 w/m²
- Maximum power consumption: 700 w/m²
- Pixel resolution: 128*128 dot/cabinet
- Pixel density: 65536 dot/m²
- Brightness: > 1000 cd/m²
- Refresh rate: 1920~3840 Hz
- Minimum viewing distance: 4 m
- LED encapsulation: SMD2121 (3in1)
- Viewing angle: H150°/V120°
- Driving mode: 1/16 Scan
- Gray scale: 4096 grade / 64G
- Ingress Protection: IP50
- Operating temperature: -20° C ~ +45° C
- Operating humidity: 10% ~ 90%RH
- Average no-failure time: >10,000 hs
- Life-span: >100,000 hours
- Blind spot rate: <0.00003
- Control distance: CATS cable: <100m; Single mode fiber: <10km
- Signal input format: AV, S-Video, VGA, DVI, YPbPr, HDMI, SDI
- Certification: ISO9001:2008, CE, FCC, ETL, CETL, etc.
- Cabinet dimensions (LxWxH): 500 X 500 X 73 mm
- Module dimensions: 500 X 125 mm
- Cabinet weight: 5.7 kg



GAMMA CYCLO 37X15W



POWER SUPPLIES

100-240V 50/60Hz

INPUT POWER

750VA

LAMP SOURCE

37 Osram Ostar RGBW LEDs

LED Nominal Wattage: 15W

LED Average Life: 50,000 h

OPTICS

4°-60° Electronic Zoom Range

EFFECTS SECTION

Three operating modes: wash, beam, FX
(Kaleido effects)

Bi-directional Rotating Front Lens

Digital Wash-Beam Framing effect

Beam edge softening control (in Wash mode)

Pixel Patterning Macros with enhanced control

0-100% linear electronic dimmer

Adjustable speed stop/strobe effect, with
instantaneous blackout

Dedicated channel for color temperature setting

White CT Emulation 2500-8000K

RGBW auto-tuning to lamp CT Emulation

Tungsten Lamp Emulation

Slow Strobe: 1 flash/sec; Fast Strobe: 25 flash/sec



CONTROL AND PROGRAMMING

Control channels: 21/32/132/169CH

Ethernet port/Battery: support

DMX protocol signal: USITT DMX 512

Display: Graphic LCD backlit b/w Display

Pan/Tilt Resolution: 16 bit

Dimmer Resolution: 16 bit

Movement control: vectorial

DMX signal connection: 3 and 5 pole

XLR input and output

WEIGHT

N.W:23KG



GAMMA LINEA WASH 24X10W 4IN1

- Voltage: AC90V-240V/ 50-60HZ
- LED: 24 pcs, 10 watt LED (RGBW 4in1)
- Beam Angle: 40°
- LED Lifespan: 60,000 hours
- Control System: DMX512
- Data Communication Format: Standard DMX512
- DMX Channel: 4/8CH
- DMX Signal Cable: 3XLR connector
- IP Rate: IP65



GAMMA EMULATOR



- Power Supply: 110-240V AC, 50/60Hz
- Lamp Source: 2R lamp
- Control mode: DMX512, Sound-active, Auto run
- Data input/output: 3pin XLR-connection, anode socket
- Color Wheel: 14 colors plus open
- Gobo Wheel: 17 gobos plus open
- Weight (net): 7.5 kg
- Dimensions: 355x290x280 mm

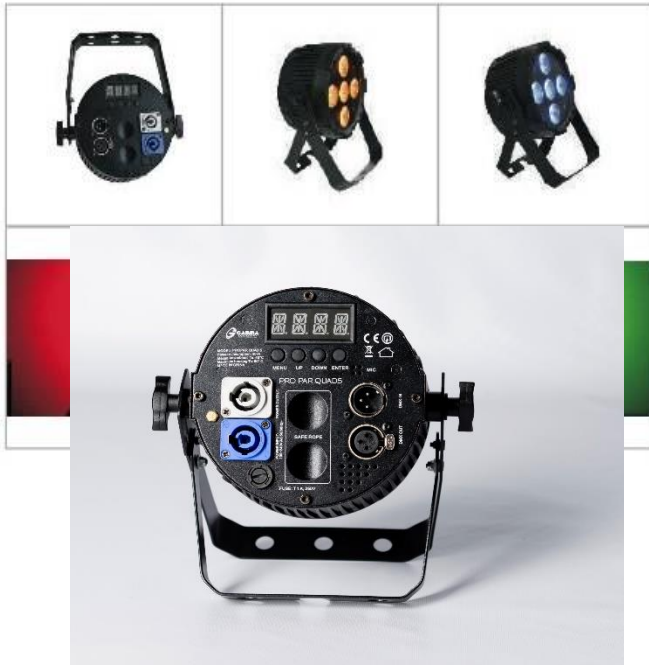


GAMMA PROPAR S5



PROPAR S5

UV + RGBWA (6in1 colored LED)



FEATURES:

- UV black light + RGBWA 6in1 LED
- 96 mm only! Very slim of the housing body thickness
- Die-cast Aluminum Housing
- Tempered glass front cover lens
- Smart Cooling system, NO fan!
- Excellent color mixing with multi-chips LED technology
- Smooth electronic dimming, real 16-bit 4 dimmer curve
- 100% Flicker Free
- Color temperature adjustable
- Variable speed strobe effect (1-30Hz)
- Operation modes: DMX-512 Protocol, Auto, Sound Active, Master/Slave.

NEUTRIK POWERCON IN/OUT

TECHNICAL SPECIFICATIONS:

- Power supply: 100~240 V AC, 50/60 Hz ~
- Power consumption: 50 W
- DMX control channels: 6/8/12 chs
- DMX512 connection: 3-pin XLR
- Sound-control: via built-in microphone
- LED type: 12 W RGBWA+UV 6in1
- Number of LEDs: 5
- Beam angle: 22°
- Dimensions (LxWxH): 96 x 213 x 227 mm
- Weight: 1.9 kg
- Maximum ambient temperature Ta: 40°
- Maximum housing temperature TC (steady state): 80° C
- Fuse: T 1 A, 250 V

GAMMA SPIDER DUAL 4X10W



- **Specs**
- Optical
- Light sources: 8 x 10W RGBW-IN-1 LED
- Beam angle: 6.5°
- Control
- DMX channel: 10/36 Channel
- Control modes: DMX, Master/Slave, Sound Active,
- Dynamic effect
- Tilt: 145°
- Effect: Delivering long-throw colorful multi-beam effe



GAMMA FRESNEL LED STUDIO 200



TECHNICAL SPECIFICATIONS

- LIGHT SOURCE 200W LED COB
- INPUT VOLTAGE 90250V / 5060 HZ
- LAMP LUMINOUS EFFICIENCY 99 PERCENT
- CERTIFICATION CE/ EMC
- USAGE / THEATERS , STAGE , ROBUST HOUSING
- CONTROL MODE DMX 512 / AUTO/ MASTER/ SLAVE
- SETTING ADD/ 4 DIGIT
- IP 33
- WORKING TEMP 40 TO +60 C
- ELECTRONIC DIMMER 0100 LINEAR
- ELECTRONIC STROBE 130 FLASHES PER SECOND
- POWER SUPPLY / AUTO SWITCHING
- WORKING LIFETIME 60K HOURS
- BEAM ANGLES 19-28-40
- DRIVE / CONSTANT CURRENT
- LED COLOR TEMP 3200K
- FLICKER FREE



GAMMA SPECTRA LEKO 200



- Power Supply: 110-240V AC, 50/60Hz
- Power Consumption: 260W
- Lamp: Cool + Warm white 200W super brightness Module LED
- Control mode: DMX512, Master/Slave, Sound-active, Auto run
- DMX channel: 2/5 CH
- Beam Angle: 19°, 26°, 36°
- Housing: Die-casting Aluminum
- Color temperature: 2000k~6500k
- Fan Noise: 12.1~20dB
- Fan speed: 900-2,000RPM \pm 10%
- Fan life: 30000 hours
- Refresh rate: 4000Hz, flick free for TV and studio
- IP Grade: IP20
- Weight (net): 6 kg
- Dimensions: 660x285x295 mm





GAMMA NIGHTHAWK 300 WASH RGBWA 5IN1

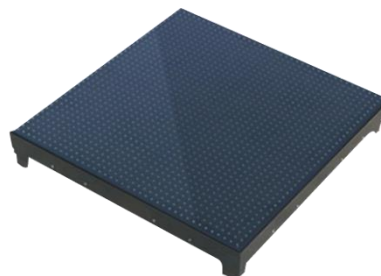
- Power Supply: 110V~240V AC, 50-60Hz
- Power Consumption: 300W
- Control: DMX, Master/Slave
- DMX Channels: 5/7/10 channels
- Light Source: 24x12W RGBWA 5in1 LED
- 16-bit, step-less RGBWA color changing with dimmer
- Lens: 25°
- 15000lux at 2 m
- Over-temperature protect
- Waterproof Grade: IP44/IP65
- Dimensions: 280x500x520 mm
- Weight (net): 8 kg



GAMMA VECTOR DANCE FLOOR



- Type: COL.PG.125.1002
- Pixel Pitch: 12.5 mm
- LED Standard: 3528 SMD
- Panel Pixel: Full color 3 in 1
- Density dot/m2: 256 dots
- Dimension: 500*500mm
- Resolution: 40*40
- Drive Mode: 1/5S
- Brightness: $\geq 1200\text{LM}$
- Refresh Rate (Hz): $\geq 400\text{Hz}$
- Grey Level: 4096 level
- Housing Material: Iron
- Supporting Weight: 500KG
- Max Power: 115W
- Protection Level: Front: IP65 – Back: IP54
- View Angle: 120°
- Working Temperature: -20°C~50°C
- Input Voltage (screen cabinet): AC220V/(110V) $\pm 15\%$, 47~63Hz
- Life Span: ≥ 30000 hours
- Signal Transfer: LAN cable
- System Platform: Windows XP/Windows 7
- Control System: Computer control system
- Video Sources Available: DVD, VCD, VCR, TV, camera with PAL/NTSC



GAMMA FAT JOE LASER



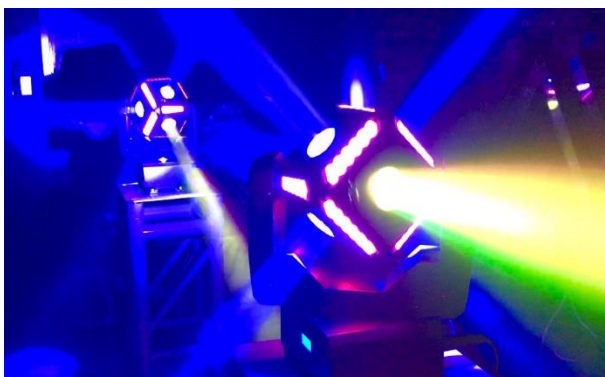
- Power Supply: 90~240V AC, 30~50Hz
- Power Consumption: 120W
- Laser Power/Wavelength:
- Red: 500mW / 638nm
- Green: 500mW / 532nm
- Blue: 1000mW / 445nm-455nm
- Beam: 3° 4mm at aperture
- Divergence: -Colors: RGB full color
- External Modulation: TTL/Analog Optional
- Laser Patterns: 256 pieces built-in laser patterns
- DMX Channels: 12 chs
- Scanner System: 30 kpps
- Control Signal: DMX512
- Control Mode: Music, Auto, Master/Slave, and DMX512, ILDA Control
- Cooling System: Fan
- Operation Environment: Indoor
- Operation Temperature: -10° C to 40° C
- Dimensions: 22 x 22 x 22 cm
- Weight (net); 9.5 kg



GAMMA CUBOT



- Light Source: 6*12W 4 in 1 RGBW OSRAM+12*6*5050SMD 3 in 1 RGB LED
- Power Voltage: 100-240VAC, 50/60Hz
- Power: 90W
- DMX Channels: 8/23/27/69ch
- Pan: 540°, speed adjustable; Tilt: 360° continuous rotation
- Beam Angle: 8°
- Dimensions: 165x145x335 mm + (150mm3)
- Weight: 6 kg



GAMMA GYRO BEAM



- Voltage: 90-240V, 50 / 60Hz
- Power: 300W
- Source: 12 CREE RGBW 4in1 LED lamp beads
- Color: RGBW four-color
- Channel mode: 21 channels mode
- Control Mode: DMX512, Master-slave, Sound, Self-propelled
- Dimming: 0-100% linear dimming
- Strobe: 1-12 times / second, or strobe pulse mode
- X-axis positioning reverse rotation, Y-axis rotation Promise
- Built-in effects mode
- Packaging: 40.5 × 29.5 × 490mm (1pc / carton)
- Weight: 7.5Kg



GAMMA LED STORM STROBE RGBW



- Light Source: 1452 pcs RGB/White 5050 LED
- Life Span: >50,000 hours
- Output: 25000lm
- DMX Mode: 1/3/4/6/7/16
- Dimmer: 16-bit
- Operating Mode: DMX, Master/Slave
- Power Voltage: 100-240VAC, 50/60Hz
- Power Consumption: 400W
- Cooling: Die-casting heat sink, convection cooling, no fans/noise
- Overheat Protect: Temperature sensor to extend lamp life
- LED Scan Rate: 7000Hz LED
- Dimensions: 280x500x520 mm
- Weight: 6 kg



GAMMA NEO MATRIX 4X1 30W



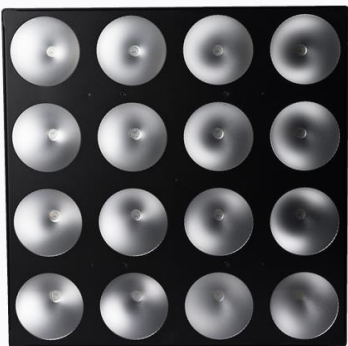
- Power supply: 100~240 V AC, 50/60 Hz ~
- Power consumption: 120W
- DMX control channels: 3, 5, 9, 12 or 17 channels
- DMX512 connection: 3-pin XLR
- Sound control: via built-in microphone
- LED type: 30 W COB Tri-color RGB
- Number of LEDs: 4
- Beam angle: 30°
- Dimensions (LxWxH): 425x187x163 mm
- Weight: 4 kg
- Maximum ambient temperature Ta: 40° C
- Maximum housing temperature TC (steady state): 80° C
- Minimum distance from flammable surfaces: 0.5 m
- Minimum distance to lighted object: 0.1 m
- Fuse: T 2, 250V



GAMMA NEO MATRIX 4X4



- Power supply: 100~240 V AC, 50/60 Hz ~
- Power consumption: 390W
- DMX control channels: 3, 5, 9, 48 or 53 channels
- DMX512 connection: 3-pin XLR + 5-pin XLR
- Sound control: via built-in microphone
- LED type: 30 W COB Tri-color RGB
- Number of LEDs: 16
- Beam angle: 30°
- Dimensions (LxWxH): 425 X 425 X 141 mm
- Weight: 11.3 kg
- Maximum ambient temperature Ta: 40° C
- Maximum housing temperature TC (steady state): 80° C
- Minimum distance from flammable surfaces: 0.5 m
- Minimum distance to lighted object: 0.1 m
- Fuse: T 3.15A, 250V



ARGUS 18X10W – OUTDOOR



- Power supply: 100~240 V AC, 50/60 Hz
- Light Source: 18 pcs 10w RGBW 4in1 LED
- IP Class: IP65
- Control Mode: DMX512, auto, menu
- Max Temperature: 140° F (40° C)
- Input/Output: 3-pin XLR, anode socket
- Dimensions: 280x250x200 mm
- Weight (net): 4.5 kg



GAMMA DITTO-S4



- THE DITTO – S4 IS A 6 IN 1 RGBWAUV WITH 4 12W LEDS , TO GIVE YOU A WIDE COLOR SPECTRUM
- FEATURES A PROPRIETARY LITHIUM-ION BATTERY, WHICH ALLOWS THE USER TO OPERATE THE UNIT WITHOUT AC POWER FOR UP TO 20 HOURS .
- IT CAN ALSO WORK WITH THE AIRDMX SYSTEM TO OPERATE FROM IOS AND ANDROID .
DOWNLOAD THE APP “ AIRAPP FOR ALL “ FROM IOS APP STORE, FOR ANDROID OS, SCAN THE QR CODE FROM MANUAL .
- INCLUDED WITH EACH UNIT WIRELESS NON-DMX IRC HANDHELD REMOTE
- SMALL FOOTPRINT ALLOWS THE UNIT TO EASILY FIT INSIDE TRUSS .
- BUILT IN ADJUSTABLE TILT LEVER TO MAXIMIZE LIGHTING ANGLE
- THREADED M10 HOLES IN UNIT TO INSTALL C CLAMP TO HANG ON TRUSS.
- CUSTOM FLIGHT CASE FOR UP TO 12 UNITS THAT CAN CHARGE ALL UNITS SIMULTANEOUSLY . OPTIONAL.
- **BATTERY POWERED WIRELESS DMX LED UPLIGHT**

