

Leica Cyclone Server – Installation Guide

(Version 2020.0.0, 5.25.20)

Cyclone 2020.0.0 Installation and EID Activation

This quick guide goes over installing Cyclone, activating an Entitlement ID, configuring databases, installing Cyclone and configuring Server on Client's Workstations.

Overview of Instructions

1. Cyclone 2020.0.0 Installation Steps
2. Activate Entitlement ID on Cyclone Server
3. Configure Databases on Cyclone Server
4. Install Cyclone on Clients Workstation's and Restart Services
5. Configure Server on the Client's Workstations

1. Cyclone 2020.0.0 Installation Steps

- Download the Cyclone 2020.0.0 installer from MyWorld, <https://myworld.leica-geosystems.com/irj/portal>, or the link below.

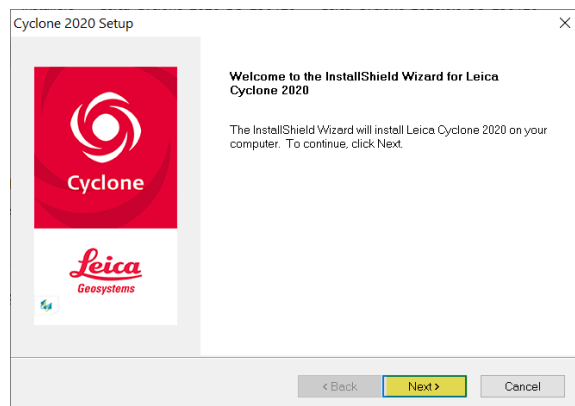
Leica Cyclone 2020.0.0 Installer and Release Notes:

<https://lgshds.sharefile.com/d-s3c2c812a1fb42f7a>

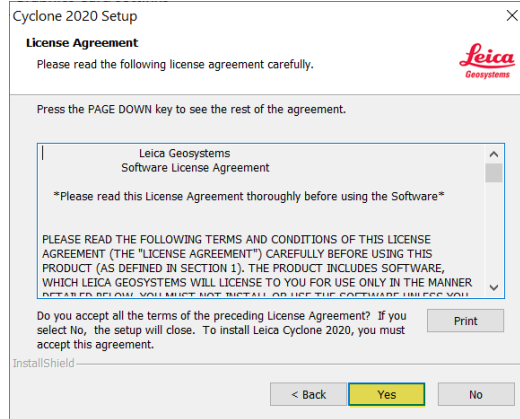
- Right-click on the Leica_Cyclone_2020.0.0_PGR_250120.exe installer on your Server and select "run as administrator"



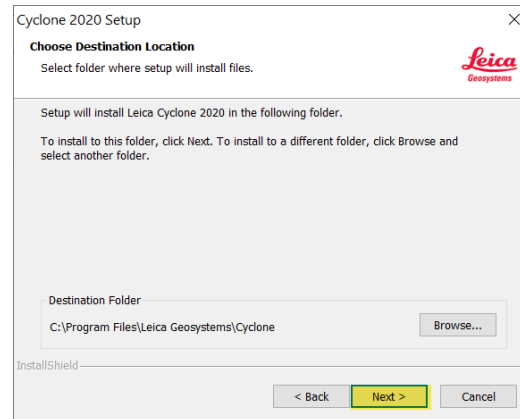
- The Cyclone 2020 Setup Wizard will launch
- Select "Next" to continue



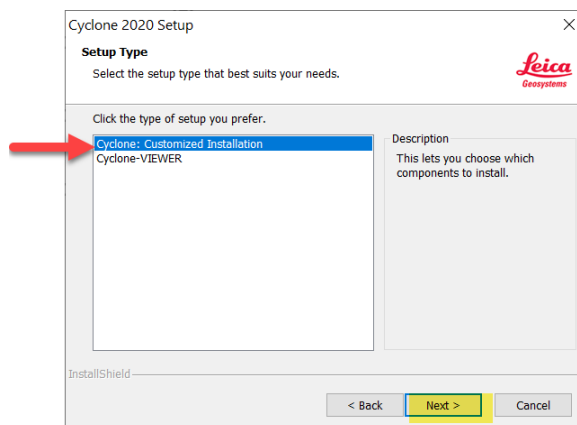
- If you agree to the License Agreement terms select “Yes”



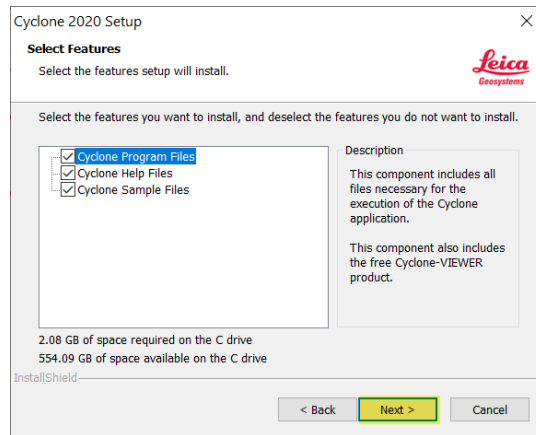
- Cyclone’s program files will install on the C Drive by default
- Click “Next”



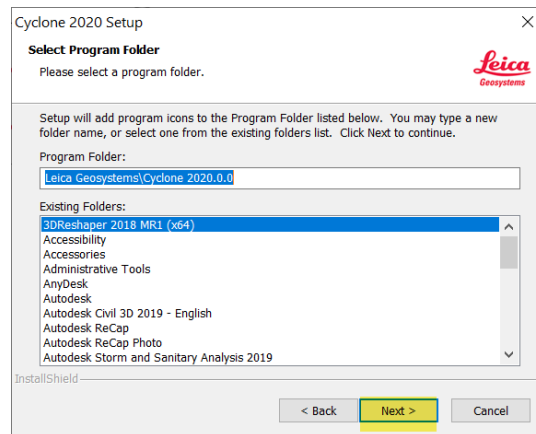
- Cyclone Customization Installation should be selected
- Then select “Next”



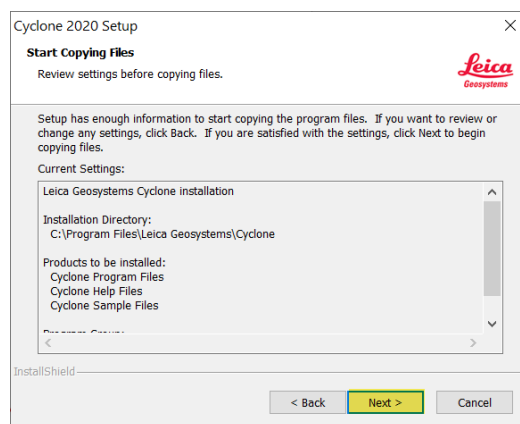
- Confirm all of the features to install are selected
- Then select “Next”



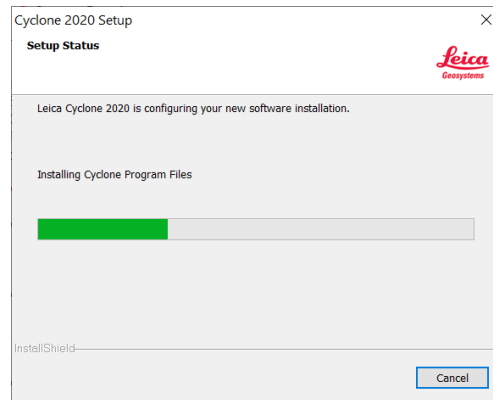
- The Cyclone Program Folders is listed and can be modified if needed.
- Select “Next”



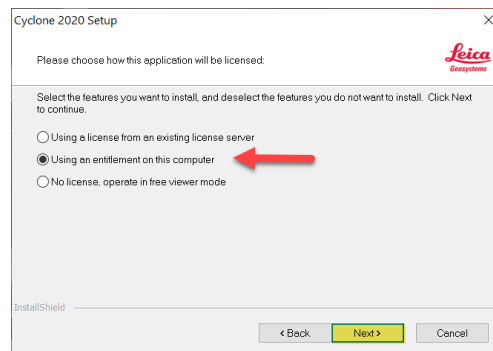
- The Cyclone Installer will now copy the files to the directories listed
- Select “Next”



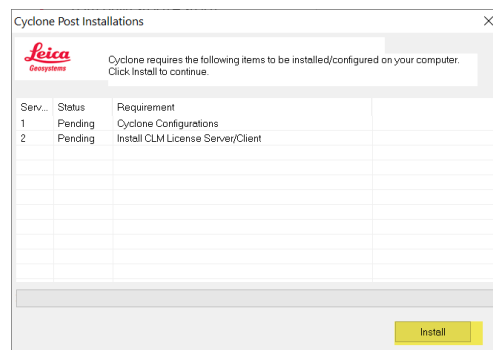
- Installation will proceed



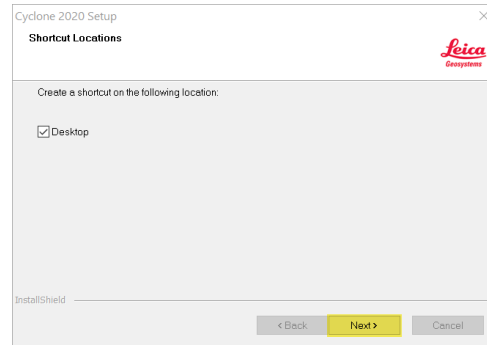
- Select “Using an entitlement on this computer”
- Then “Next”



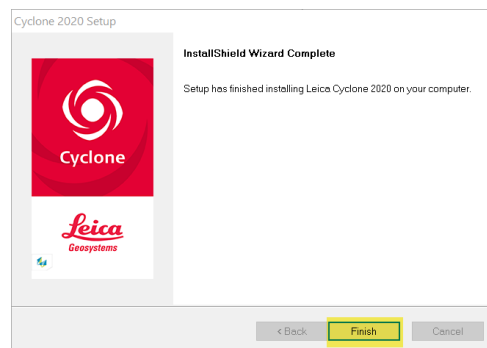
- Cyclone will now install the Cyclone Configurations and CLM License Server
- Select “Install”



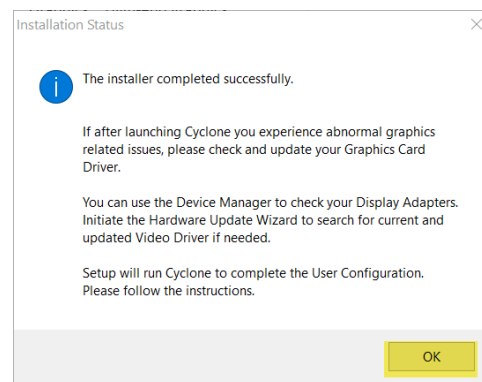
- Check “Desktop” if you would like a Cyclone icon on your desktop
- Then “Next”



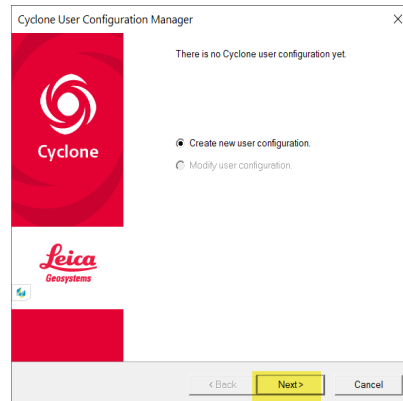
- Installation is Complete
- Select “Finish”



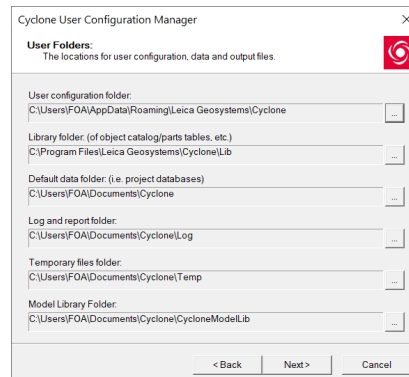
- Then “OK”



- Cyclone will now install your User Configuration Folders
- Select “Next”

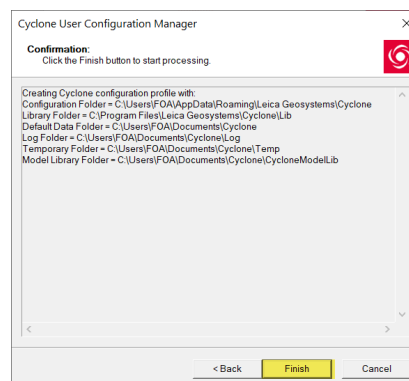


- The Cyclone User Folders on the Server should all be located on the local drive **
- Once you have reviewed and/or changed any of the folders select “Next”



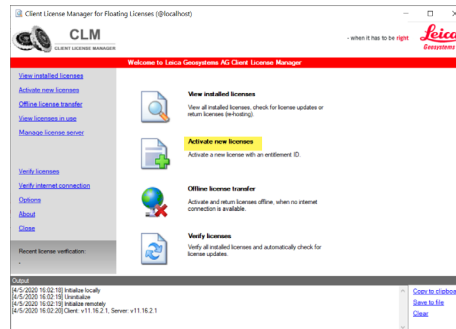
- Once the directories are created select “Finish”
- Then “Close”

****Note:** The Cyclone Databases can be Configured on a NAS Drive. A Quick Guide is available upon request

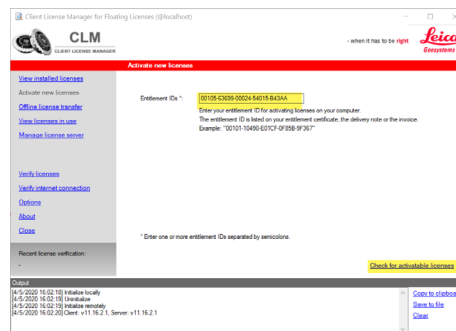


2. Activate Entitlement ID on the Cyclone Server

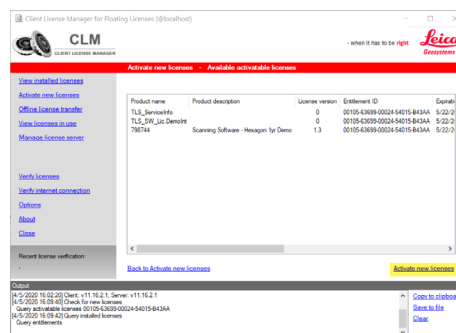
- Open the CLM for Floating Licenses App from your start menu
- Select “Activate new licenses”



- Enter your Entitlement ID in the “Entitlement IDs” field
- Then Select “check for activatable licenses”



- Select “Activate new licenses License”

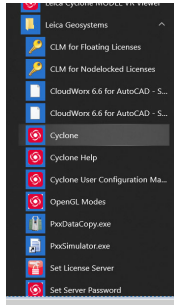


Note: The Cyclone Server’s Entitlement ID needs to be activated on the Cyclone Server . The EID cannot be activated on another License Server or the Client.

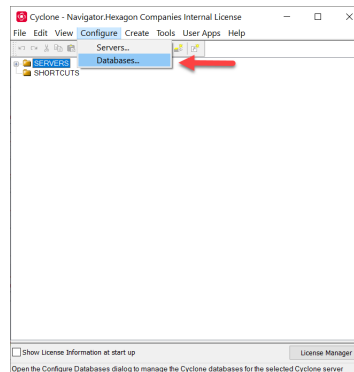
3. Configure the Databases on the Server

The Cyclone IMP Databases will need to be configured on the Cyclone Server

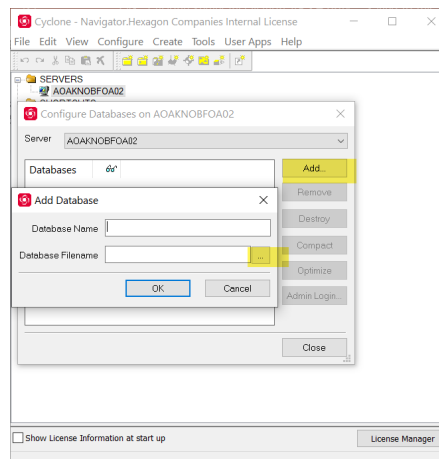
- Open the Cyclone App from your Start menu



- In the Cyclone Navigator select “Configure/Databases”



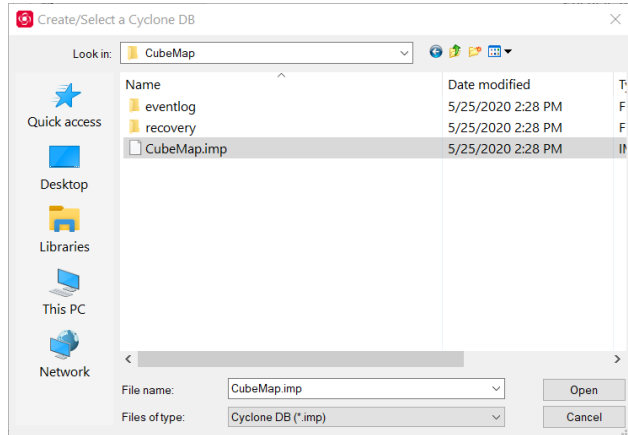
- Select your Server from the drop down list
- Click “Add”
- Select the Browse icon “...” to browse to the IMP on the Server



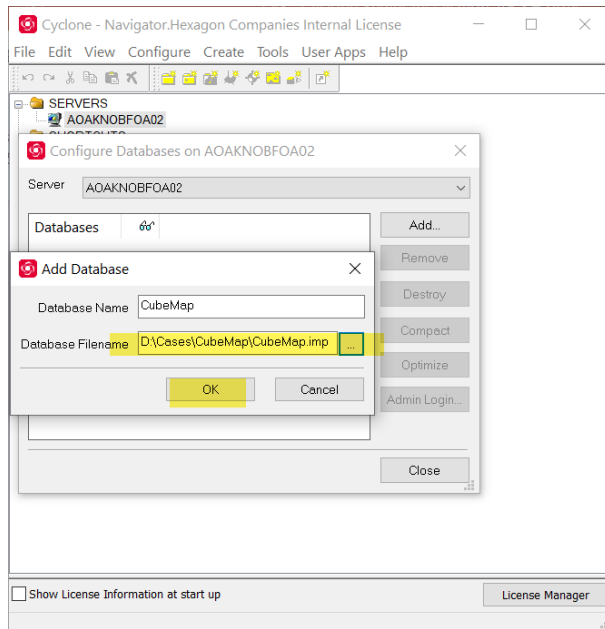
Note: Configure the databases under the shared Server. The unshared Server is for local configurations. If you are configuring the databases from a NAS Drive refer to the NAS Configuration Guide

3. Configure the Databases on the Server

- Browse to the IMP on the Server
- Select the database and then “Open”



- Then select “OK”



4. Install Cyclone on the Clients Workstation and Restart Services

Install Cyclone 2020 on each client workstation

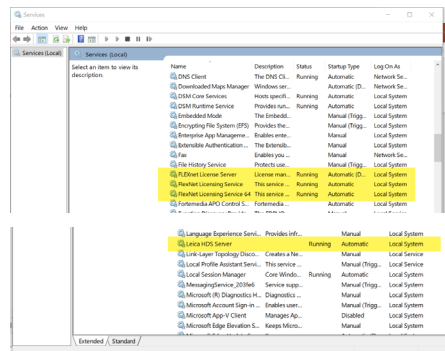
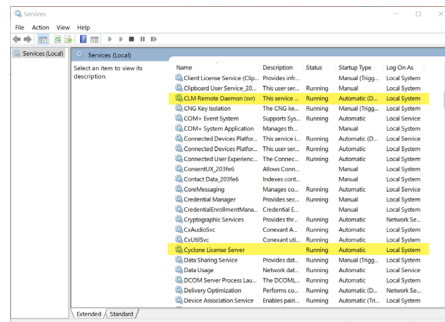
- Copy the full Cyclone 2020 installation package to the local drive on the client
- Right-click on the Leica_Cyclone_2020.0.0_PGR_250120.exe file in the installation package and “ run as admisntration”



- Proceed with installation on each client following the same Cyclone installation steps as the Server

Once Cyclone has been installed on the Server and Clients open Local Services on the Server

- Stop the CLM Remote Daemon(Svr), Cyclone License Server, FlexNet License Server, FlexNet License Services, and FlexNet License Service 64
- Start all of the Service in the same order

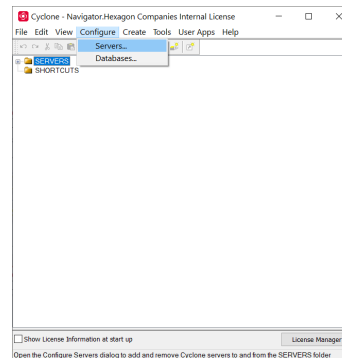


Note: The Services will need to be stopped and restarted on both the Cyclone Server and the Clients

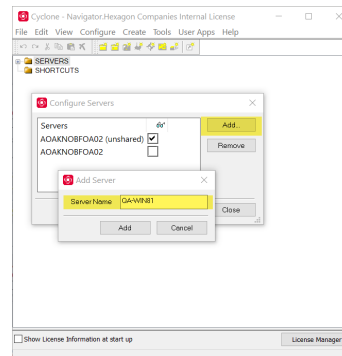
4. Configure the Server on the Clients

The Server will now need to be configured on the Clients to access the Cyclone IMP Databases

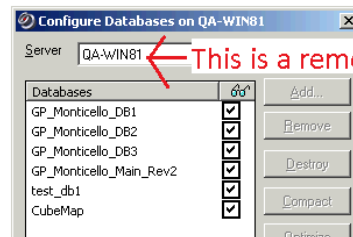
- Open the Cyclone App on the Client
- Select “Configure Server”



- Select “Add”
- Enter the Cyclone Server’s name
- Click “OK”



The Cyclone Server is now configured. All of the databases that were configured on the Server are listed and available for the Clients use



Note: Importing raw data is only supported locally. After the import process is complete the database can be moved to the Server and configured for use over the network.