



Leica DISTO™ transfer

How to connect your Leica DISTO™ to your PC

- when it has to be **right**

Leica
Geosystems



PC, Laptop



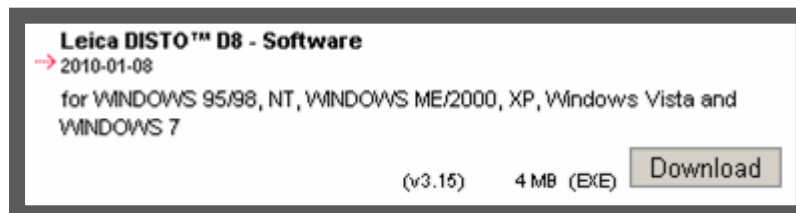
Tablet PC, UMPC

Leica DISTO™ transfer

How to install

1. If you have access to the internet please download the latest version of Leica DISTO™ transfer software

http://ptd.leica-geosystems.com/en/Support-Downloads_6598.htm?cid=11104



Leica DISTO™ D8 - Software
→ 2010-01-08
for WINDOWS 95/98, NT, WINDOWS ME/2000, XP, Windows Vista and
WINDOWS 7

(v3.15) 4 MB (EXE)

Leica DISTO™ transfer

How to install

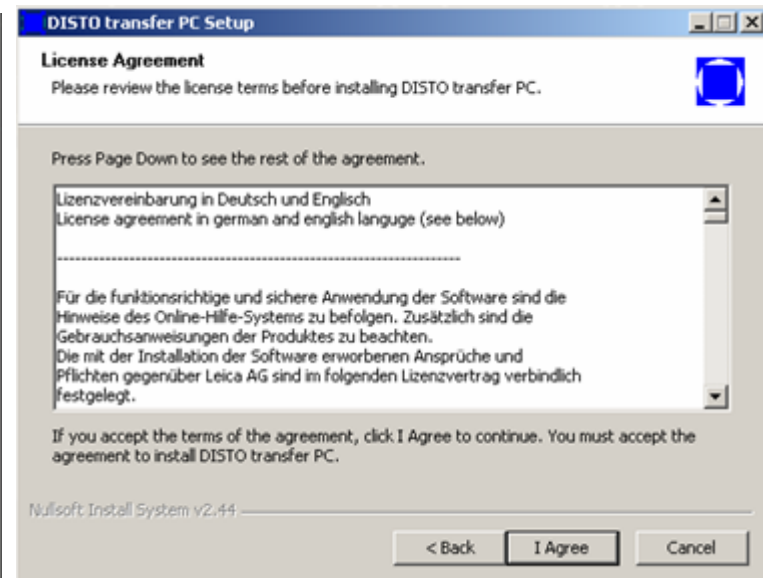
2. Start the downloaded software „SetupDISTO3.exe“
3. You will be asked for the language for the installer program (not for the Leica DISTO™ transfer software)



Leica DISTO™ transfer

How to install

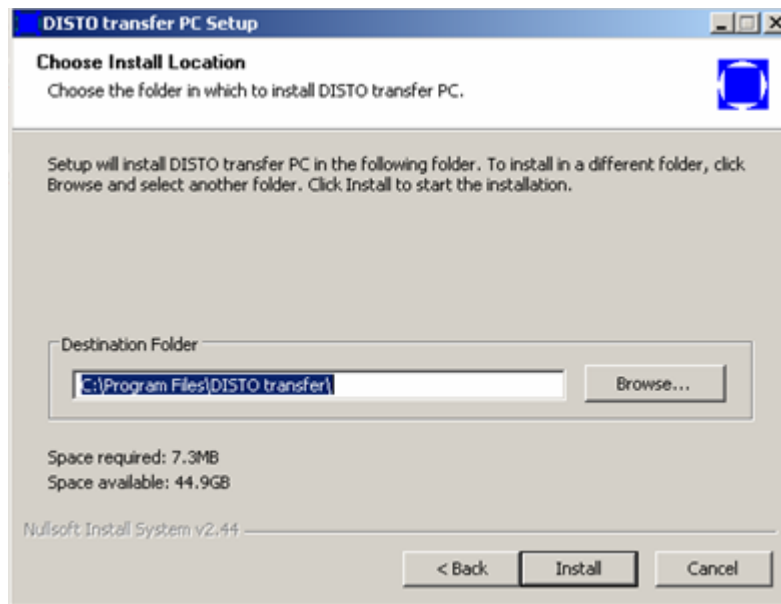
4. Information appears that you will be guided by a installation wizzard.
5. You have to agree to the license agreement



Leica DISTO™ transfer

How to install

6. Please choose the location where the software should be installed. Just click okay if you don't want to have a specific place for the program.



Leica DISTO™ transfer

How to install

7. Please wait till installation process took place and following window appears



8. If you leave the tick on this window and click next you will be asked for the language of your Leica DISTO™ transfer program. This setting can be changed later as well by starting the program „DISTO transfer PC Sprache language“ in the program folder „DISTO transfer PC“

Leica DISTO™ transfer

How to install

- 9. The Plugin for Autocad® and Bricscad are installed automatically if such installation has been detected during the Leica DISTO™ transfer start. So you have to start the Leica DISTO™ transfer software once manually so it can detect the CAD software and place the necessary registrations. Please note that the Plugin only works with AutoCAD versions later than 2004 and Bricscad versions later than 9.3.5**

Leica DISTO™ transfer

Start the program Leica DISTO™ transfer PC

1. Make sure that the Bluetooth hardware on your PC is activated
2. Switch on your Leica DISTO™ and press the Bluetooth button to activate the Bluetooth hardware. The Bluetooth logo on the Leica DISTO™ display starts blinking respectively appears in grey to show that it is active.



Leica DISTO™ transfer

Start the program Leica DISTO™ transfer PC

3. Click the program icon for Leica DISTO™ transfer PC in the program folder „DISTO transfer PC“ or on the Desktop.



4. Following picture will appear to show that the program is in progress.



Leica DISTO™ transfer

Start the program Leica DISTO™ transfer PC

5. After some seconds following window will appear and list all found Leica DISTO™ devices with active Bluetooth

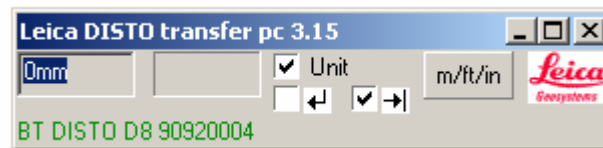


6. Select your Leica DISTO™ from the list and press OK

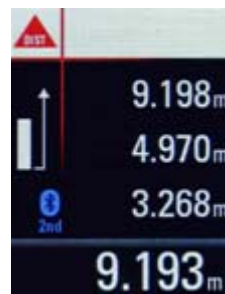
Leica DISTO™ transfer

Start the program Leica DISTO™ transfer PC

7. The Leica DISTO™ transfer starts



8. The Bluetooth symbol on the screen of the Leica DISTO™ appears durable respectively turns blue



Leica DISTO™ transfer

Using the program Leica DISTO™ transfer PC

1. Following settings can be made

Transferred Distance

Transferred Inclination

Activate Units

Open Window for units details

Convert meter to mm or cm

Convert format for Feet/Inches

This shows type and serial number of connected instrument

Double click to enter user name at Start screen of Leica DISTO™ D8

Transfer „Return“ after values
→ e.g. in Excel jump down

Transfer „Tabulator“ after values
→ e.g. in Excel jump right

Leica DISTO™ transfer

Using the program Leica DISTO™ transfer PC

2. Start the program where you want to transfer the measurements from your Leica DISTO™ to

The screenshot illustrates the Leica DISTO transfer PC 3.15 software interface. The main window displays a 3D wireframe model of a building structure. A smaller window shows a list of measurements: 3.518m, 3.286m, 3.289m, and 38.024m². A third window shows a Microsoft Excel spreadsheet with columns for height, width, diagonal 1, and diagonal 2, and rows for different rooms like Living Room, Bath Room, and Kitchen.

	height	width	diagonal 1	diagonal 2
Living Room				
window 1	1.366m	2.884m		
window 2				
window 3				
window 4				
window 5				
Bath Room				
window 1				
window 2				
Kitchen				
window 1				
window 2				

Leica DISTO™ transfer

Using the program Leica DISTO™ transfer PC

3. Press „2nd“ key on the Leica DISTO™ and use the arrow keys in order to move within an application (e.g. navigate to different cells in Excel)

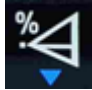






A screenshot of the Microsoft Excel application window. The window title is 'Microsoft Excel - Book1'. The menu bar includes File, Edit, View, Insert, Format, Tools, Data, Window, Help, and Adobe PDF. The toolbar shows various icons for file operations and editing. The active cell is D11. The spreadsheet contains a table with the following data:

	A	B	C	D	E
7	Hauptstrasse 3				
8	1st Floor				
9	Living Room				
10		height	width	diagonal 1	diagonal 2
11	window 1	1.366m	2.8		
12	window 2				
13	window 3				
14	window 4				
15	window 5				
16					
17					
18					
19	Bath Room				
20		height	width	diagonal 1	diagonal 2
21	window 1				
22	window 2				
23					
24					
25					
26	Kitchen				
27		height	width	diagonal 1	diagonal 2
28	window 1				
29	window 2				
30					

Red arrows are overlaid on the spreadsheet, pointing in all eight directions (up, down, left, right, and diagonally) from the cell D11, illustrating the navigation capabilities of the Leica DISTO™ transfer PC program.

Leica DISTO™ transfer

Using the program Leica DISTO™ transfer PC

4. In any function the **value in the main line (main result)** will be transferred
5. In the angle tracking function (press 1x)  **the angle and distance** will be automatically transferred
6. To transfer **all values in a function** press and hold the  key for 2 Sec. All values will be **underlined with a blue line**. Transfer the data by pressing the  key
7. To select a value (also out of the History) press and hold the  key for 2 Sec. Afterwards press the  or the  key to select a value. (The selected value will be underlined in blue). The value will be transferred by pressing the  key.

Leica DISTO™ transfer

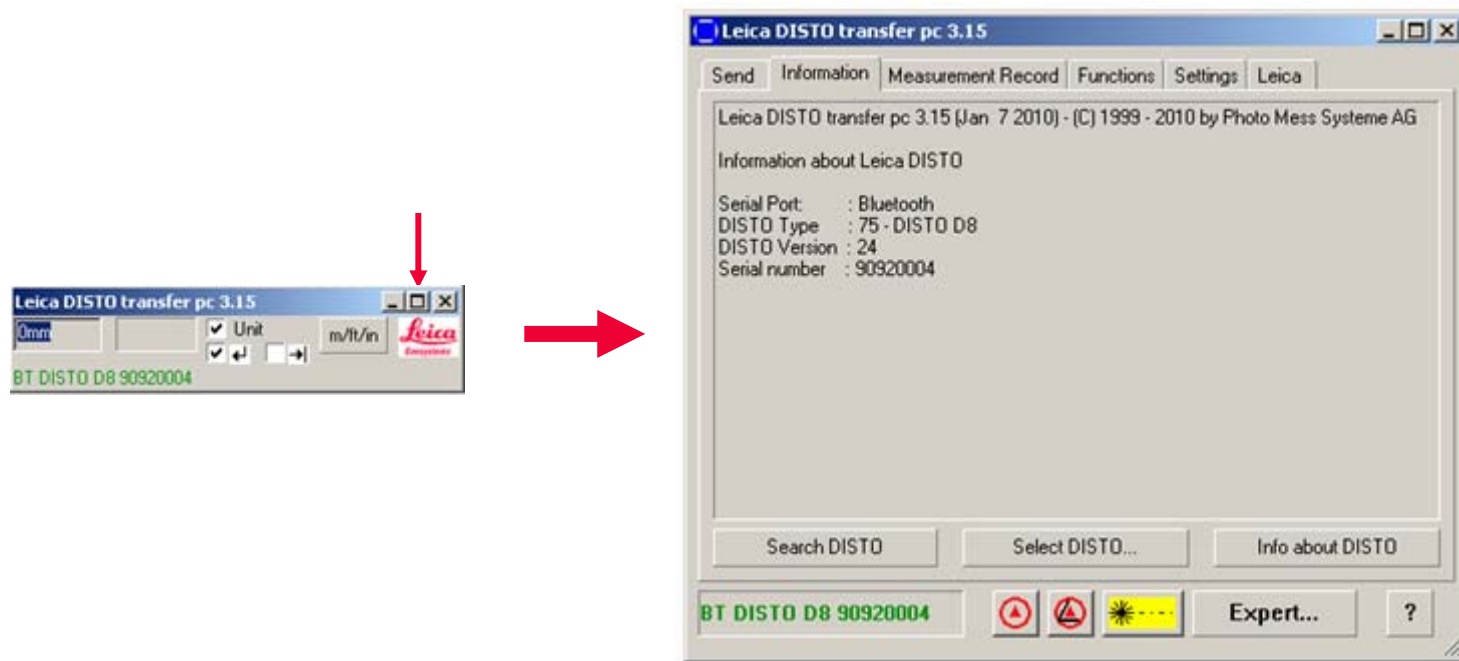
Using the CAD Plugin for Autocad® and Bricscad

- 1.** To start the Plugin for Autocad® and Bricscad you have to start the corresponding CAD software and write the command „leicadisto“ in the command field. If Leica DISTO™ transfer is not already open it will be opened now automatically.
- 2.** Click in the drawing area and start transferring distances. If you transfer distance and inclination the horizontal distance will be calculated and used in drawings.
- 3.** If the inclination is more than 75° it will be interpreted as a vertical distance and used as a height. Only one height can be entered per layout (change to 3D view to see the three dimensional drawing).
- 4.** The arrow keys on the Leica DISTO™ (press 2nd for usage) can be used to select drawing direction.

Leica DISTO™ transfer

Advanced functionality of Leica DISTO™ transfer

- For further functionality for the Leica DISTO™ transfer program you can press the “Maximize” button of the program window



Remote Measure Distance

Remote Measure Distance and Inclination

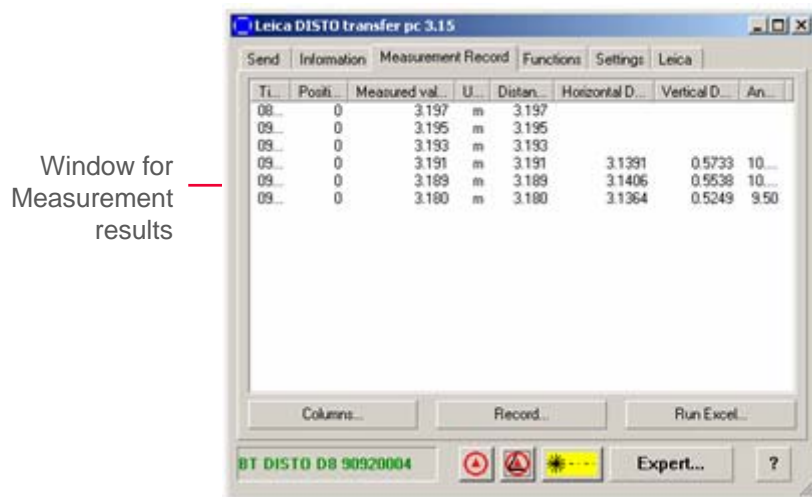
- when it has to be right

Remote Switch on laser

Leica DISTO™ transfer

Advanced functionality of Leica DISTO™ transfer

- Following important functions you can find in this mode
- To close this advanced mode press „Minimize“ window button



Choose content for columns

Save or open or print the columns

Export results to Excel

Select interval for continuous measurements

Select what should be measured



Leica DISTO™ transfer

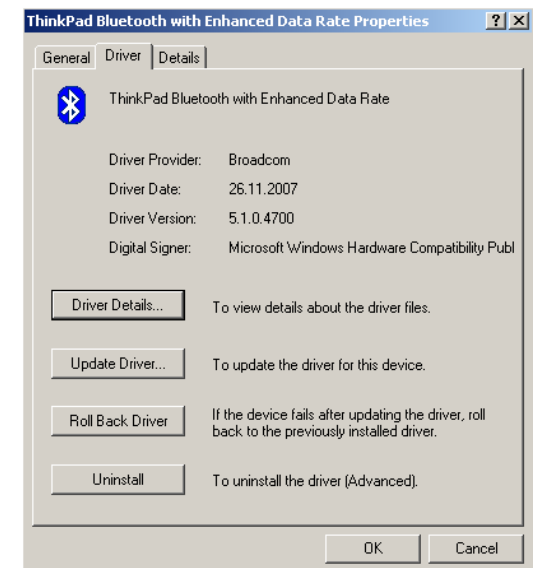
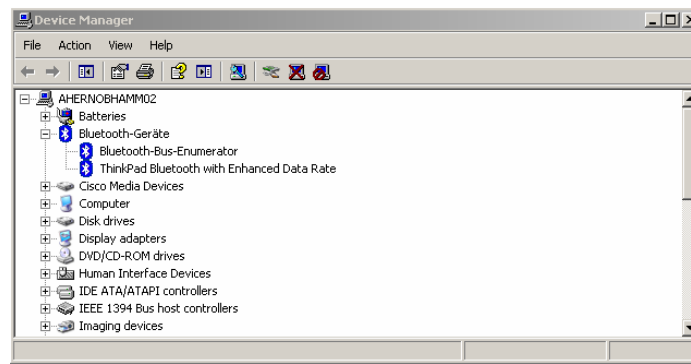
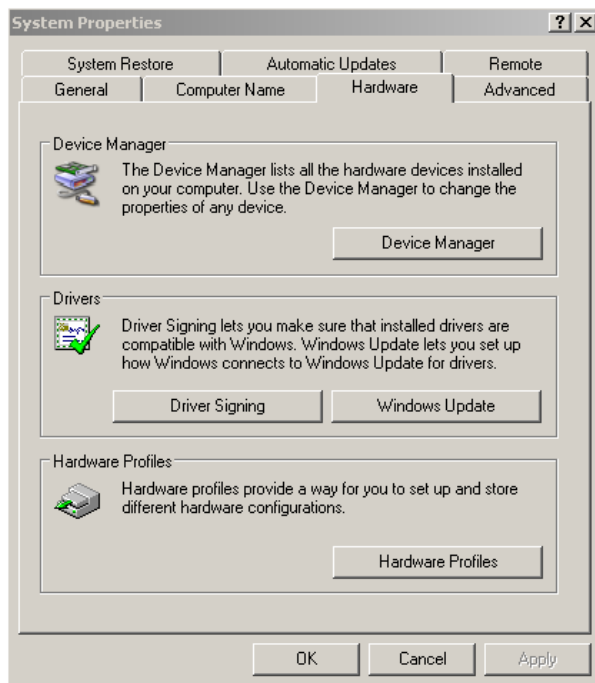
Troubleshooting with the Bluetooth driver

- To connect a Bluetooth hardware with a PC a Bluetooth stack (driver) must be installed on your computer. There are many different drivers existing. The most common ones are from Microsoft and Broadcom (driver is called Widcomm).
- Leica DISTO™ transfer supports stacks from following companies:
 - Microsoft (comes with the Windows operating system)
 - Broadcom (Widcomm driver)

Leica DISTO™ transfer

Troubleshooting with the Bluetooth driver

- In order to know which stack is used on the PC you have to look
 - Control Panel → System → Device Manager → Bluetooth (double click)



Leica DISTO™ transfer

Troubleshooting with the Bluetooth driver

- **What effects can be if another driver is used?**
 - Leica DISTO™ does not connect
 - A connection always drops after a certain period of time
 - Values are not transferred in a usable form

Leica DISTO™ transfer

Troubleshooting with the Bluetooth driver

- **Solution 1:**
 - Some drivers request from the user to enter an access code before establishing the first connection. So please check whether there is a Bluetooth icon in the Task line below (Notification area) which you have to double click in order to enter this code. Please enter the code „0000“. Sometimes the Bluetooth logo appears green/blue if you have to enter this code.

Leica DISTO™ transfer

Troubleshooting with the Bluetooth driver

- **Solution 2:**

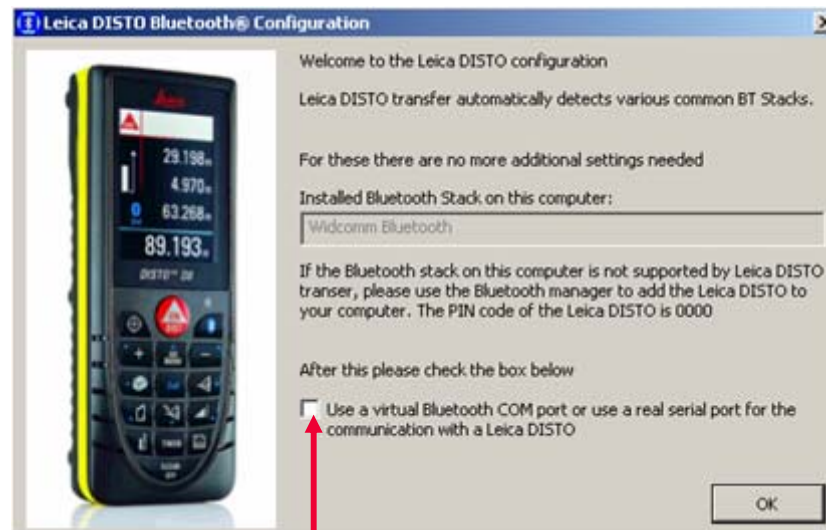
- Leica DISTO™ transfer is programmed to access the Bluetooth modul of the PC directly. If this is not possible you can change to a mode where a virtual COM port is supported.
- Click the program icon for „DISTO transfer PC Bluetooth Install“ in the program folder „DISTO transfer PC“ or on the Desktop.



Leica DISTO™ transfer

Troubleshooting with the Bluetooth driver

- Solution 2 (cont.):
 - Check the field for using the virtual COM port



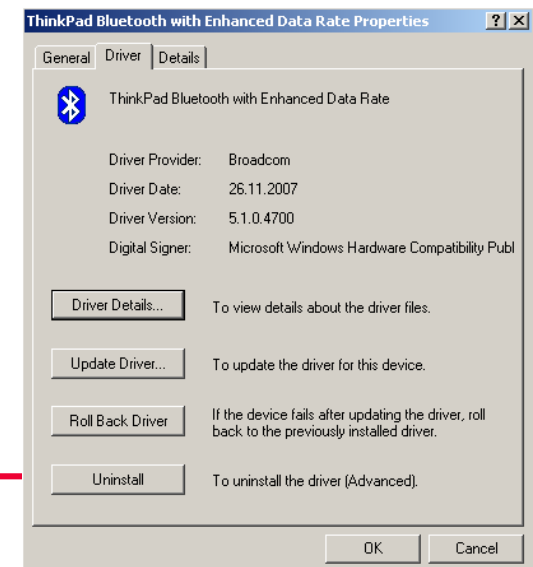
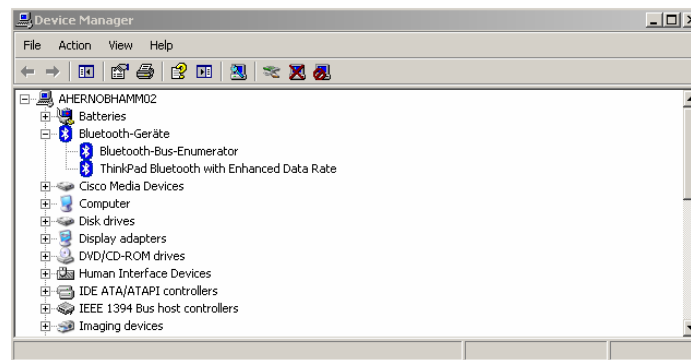
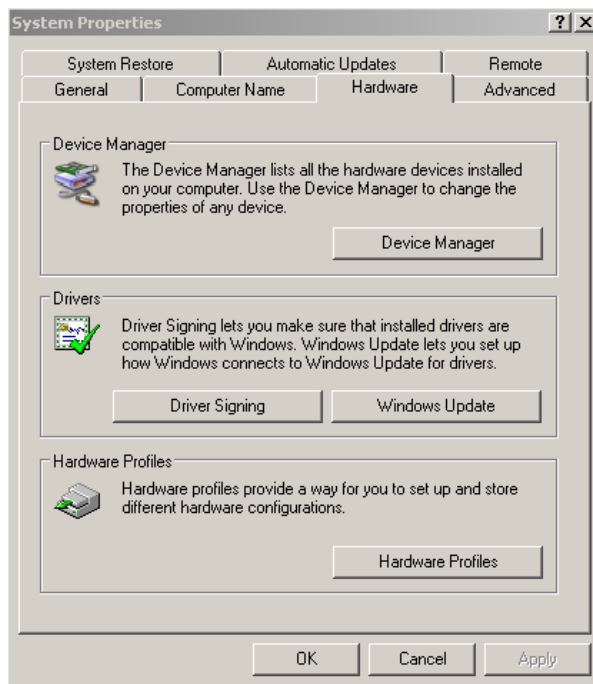
- Start the Leica DISTO™ transfer again. The program window will immediately appear and the different COM-ports will be polled until the Leica DISTO™ is found.

Leica DISTO™ transfer

Troubleshooting with the Bluetooth driver

- **Solution 3:**

- If Solution 1 and 2 are not solving the problem you have to uninstall the current driver
→ Control Panel → System → Device Manager → Bluetooth (double click)



Leica DISTO™ transfer

Troubleshooting with the Bluetooth driver

- **Solution 3 (cont.):**
 - Make sure that the Bluetooth hardware on your computer is active
 - Restart your computer
 - After the restart you will be informed that a new hardware has been found. You have to choose a driver that should be installed for this hardware. Please choose the standard driver that is recommended (will be the Microsoft Bluetooth stack).
 - Start again to connect your computer with the Leica DISTO™ as described before

Leica DISTO™ transfer

Troubleshooting with the Bluetooth range

- The Bluetooth of your Leica DISTO™ is a class II. So a range of 0.3m - 10m and more is possible
- Below 0.3m and after 10m the connection can drop
- The maximum range of a Bluetooth connection depends on the range of the Leica DISTO™ and of the Bluetooth hardware in your computer. Since the Bluetooth hardware of the computer is very often a class III modul this range can be limited. In this case we recommend to use an external USB Bluetooth hardware of class II. Please make sure that you install the standard driver from Microsoft or Broadcom (Widcomm) so you will not experience problems later on.

A lot of success in using your Leica DISTO™ with Bluetooth

In the case a problem exists and can not be solved as described in this presentation please send a request by email to mtd-support@leica-geosystems.com

- when it has to be right

