

# Less Corn

---

# More Choice+

*Profit through increased feed efficiency and carcass merit*



**17<sup>th</sup> Annual Bull & Replacement Sale**

*12:00 Noon CT • March 14, 2017*

**WEDEL**  
**BEEF GENETICS**



Ross, Cole, Rebecca, & Finn Heiman, Whitney, Marie Wedel (Frank's mother), Frank, Susan, Lauren & Jared Gooch, Sophia, Rees, Olivia, Korina, Joaquin

# WEDEL BEEF GENETICS

## 17<sup>th</sup> Annual Bull & Replacement Sale Tuesday, March 14, 2017

**160 Feed-Efficiency Tested Bulls** [Red Angus, SimAngus, & Char x Red Angus Hybrids]  
**150 Red & 50 Buckskin Commercial Replacements** [open & ready to breed]  
**110 Fall-Calving Commercial Bred Heifers**

### Schedule:

#### Monday, March 13th

All Day - View Sale Bulls & tour Wedel cowherd

#### Tuesday, March 14th

9:00 am - Bulls penned for viewing

11:00 am - Lunch, compliments of Wedel Red Angus

12:00 Noon - 17th Annual Wedel Production Sale

- Bulls Sell in Catalog Order -

### Accommodations:

Hi Plains Motel, Leoti, KS 620/375-2239

Barrel Springs Hunt Club, Horace, KS -  
620/376-2701

### Publication & Buyer Representatives:

Auctioneer.....Trent Stewart 541/325-3662

Western Livestock Journal.....Rod Swafford 620/338-7244

High Plains Journal.....Sam Rucker 620/393-1107

Stock Exchange.....Justin Stout 913/645-5136

KS Livestock Assoc.....Steven Russell 785/458-2650

Red Angus Association.....Gary Fike 785/410-2608

Veterinarian.....Mark Olson, DVM 785/475-3808

### Wedel Contact Info:

Office & Sale Day.....620/375-2578

Frank's Mobile.....620/874-1437

Greg Comstock.....804/647-0127

email.....fswedel@wbsnet.org

Website.....wedelredangus.com

### Welcome to Wedel Red Angus' 17th Annual Bull & Replacement Female Sale

Just a heartfelt welcome and thank you to everyone who has taken an interest in our program. The question "how can we better serve our customers" drives every decision that we make whether it be in the genetics we use or the cows we keep or in our efforts to help customers market their calves. Ultimately, the best service that I can provide my customers is to offer a better product - bulls that give them the best opportunity for sustained profitability.

That philosophy was our main reason to invest in the Growsafe system. I believe this presents our industry with the opportunity to lower inputs costs, improve efficiency and become even more competitive versus other proteins. You will see an efficiency value in this catalog for each bull presented as F:G ratio. This considers both gain and intake and ultimately ranks the bulls on the efficiency of their gain.

The Growsafe company has done considerable research on the relationship between bulls fed in confinement and cows on grass and have determined that the correlation is strong between the two. Selecting for increased feed efficiency not only makes progress in the feedlot, but also on hi-roughage rations and native pastures. This is the new frontier is genetic evaluation.

I also need to introduce you to Finn Heiman who joined our family in April joining brother Cole and parents Ross and Rebecca Heiman.

Thanks again to all and wishing everyone green pastures and profitable prices in 2017!

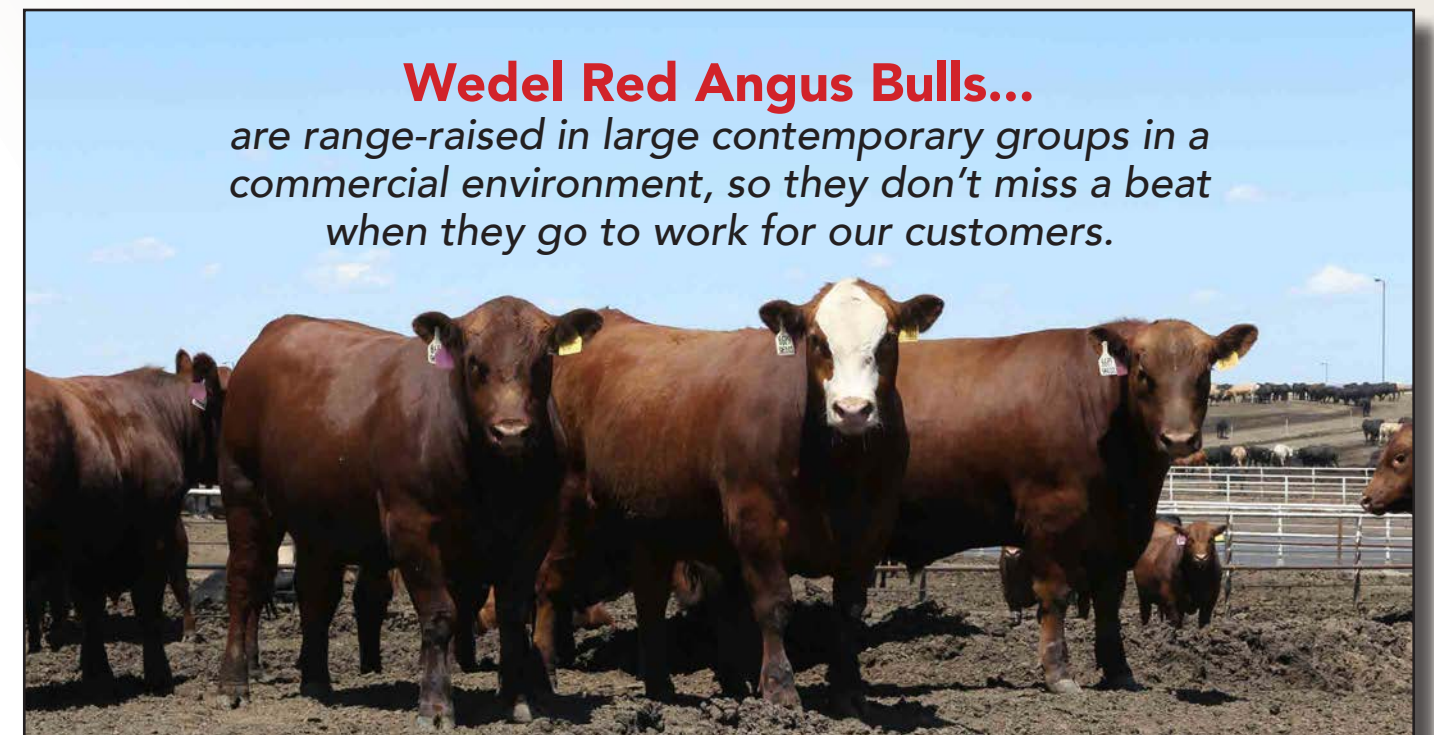
Frank and Susan Wedel

### • Customer Incentives •

**Volume Discounts:** Buy 5 Bulls and get a 3% Discount • Buy 10 bulls and get a 6% Discount.

**Trucking Discount:** Haul your bull purchases away on sale day, or arrange to pick them up at the ranch no later than Friday, March 17<sup>th</sup> and receive an additional \$100 per bull discount.

**Absentee Bidders:** If you cannot attend the sale, bids may be directed to Wedel Red Angus or one of the listed buyer representatives. All bids will be handled confidentially.



# SALE CATALOG DATA:

**Sale Lot #** → **WFL 8127 6077**

**% Red Angus** → 1/23/16 3547173

**Red Angus Assoc Registration #** → WFL:6077 [100% / A]

**GridMaster Index & Percentile Rank** → **WFL PAWNEE CANYON 8127** (LJC PAWNEE CANYON S318, WFL JULIAN 4179) and **WFL MERLIN 236B** (LJC MERLIN T179, WFL ENVY 9132)

**Actual Birth Weight** → **Individual Data** table

**Weaning (WW) & Yearling (YW) ratios** → **Individual Data** table

**Scrotal Circumference (SC) adjusted to 365 days** → **Individual Data** table

**Relative Frame Size** → **Individual Data** table

**Feed Conversion (F:G) ratio** → **F:G ratio** table

**Average Daily Gain (ADG) ratio & EPD** → **Trait Ratio EPD / %** table

**Ultrasound Ratios | EPDs | % Rank** → **Trait Ratio EPD / %** table

**Carcass Percentile Ranks** → **Carcass EPDs** table

**Calving Ease, Weight & Repro Traits EPDs and percentile ranks** → **HerdBuilder: 132 / 13%** and **GridMaster: 53 / 2%** tables

**RA50K** (bulls with this notation have EPDs enhanced accuracy from genomic data)

**Age of Dam (AoD) & Dam's MPPA**

**Legend:**  
 CED = Calving Ease Direct  
 BW = Birth Weight  
 WW = Weaning Weight  
 YW = Yearling Weight  
 MLK = Milk  
 ME = Maintenance Energy Requirement  
 HPG = Heifer Pregnancy Rate  
 CEM = Calving Ease Maternal  
 STY = Stayability

## Increase Profit through improved Feed Efficiency...

For decades we have collected data on post-weaning gain, which is expressed as Average Daily Gain or ADG. And, indeed rate of gain is of great economic relevance to the feeders who buy our customers calves. However, it was our 2015 investment in GrowSafe feed intake data collection that allowed us to accurately identify which bulls were gaining most efficiently and profitably.



With our GrowSafe system, we were able to accurately identify variation in Dry Matter Intake (DMI). Considering DMI and ADG together we are able to identify variation in how efficiently bulls convert feed. This is expressed as Feed:Gain (F:G). In our catalog, we present both ADG and F:G ratios:

- A bull with an ADG ratio of 110 gained 10% more per day than average.
- A bull with a F:G ratio of 110 gained 10% more efficiently than average.

Efficiency comes in different shapes and sizes...Some average gainers ate 25% less feed. Some ate 10% more feed, but gained 40% more weight. And of course, there are some that ate 20% more and gained 20% less - this investment in GrowSafe allows us to cull those inefficient bulls.

Improved feed conversion is one more trait that adds value to your calf crop; like carcass merit, it makes your calves worth more to feed. Improving the efficiency of the bulls you turn out will ultimately lead to a more efficient cow herd as the recent BIF symposium in feed efficiency data has a significant correlation to feed efficiency in the cow herd

# DVAuction

Broadcasting Real-Time Auctions

Watch and Bid Online at [DVAuction.com](http://DVAuction.com)

### Can't make the sale?

We are pleased to bring you real-time Internet bidding and a live broadcast of this sale through DVAuction. To watch or bid online, simply complete the following steps:

- Visit the DVAuction web site at [www.dvauction.com](http://www.dvauction.com)
- Click on the "Creat New Account" tab
- Enter a user name, password and your contact information.
- Complete the Banking Information. (If you are only interested in viewing you can skip this section)
- Select your Time Zone, Accept the Terms and Conditions and click "Create Account"
- Complete the process by answering a few questions, selecting your subscription choices
- Click on "Apply for Bidding" in the upper left corner of your screen to select the sales you wish to bid on
- Be sure to include a personal contact at your bank, we will contact them in order to get a credit reference.
- If you would prefer to be approved using your credit card, call (402) 316-5460.
- Please be sure to apply for bidding at least a day in advance of the sale-every effort will be made to process your application in a timely manner.

DVAuction will contact you once you have been approved to bid. We do not provide buyer numbers until you have purchased a lot in the sale, and that number is only usable for that auction. After the sale contact the sale owner or manager to make arrangements for payment and delivery of your online purchases.

**Please Note:** High speed Internet access (DSL, T-1, or Broadband) is required to be able to bid successfully during the sale. If you have any questions, please contact DVAuction at (402) 316-5460 or email [support@dvauction.com](mailto:support@dvauction.com).

**Proxy Bidding:** If you can't access a computer during the sale, you can now place a "proxy bid" through DVAuction. Simply follow the instructions listed above, and as the sale date nears there will be a "Proxy Bidding" link under the sale listing on the main page of DVAuction. You can then place the maximum amount that you'd like to bid, and our system will represent your bid just as if you were there.



## HOW TO PARTICIPATE AS AN ABSENTEE BUYER

We have made preparations to bid and buy livestock through Superior Productions' "Call or Click-To-Bid" service for those unable to attend in person on sale day. Please note that all of the lots in the sale will also be available for viewing online prior to sale day at [www.superiorlivestock.com](http://www.superiorlivestock.com).

**Turn in Bids Over the Phone.** This is our traditional method of buying livestock and is the suggested process for anyone who does not have consistent, high-speed internet. To get started simply go online to [www.superiorlivestock.com](http://www.superiorlivestock.com) and click on the tab titled "Register for a Buyer Number". Select the registration form for Superior Productions and print the registration form. Fill it out and fax it in to Superior Productions at (817) 378-3380 with a signature on it, or scan and email the form to [info@superiorauction.com](mailto:info@superiorauction.com). You can also mail it in to the address provided on the form. Upon receipt of this information Superior will call you with a buyer's number and the bid line phone number that you will use on sale day to place bids over the phone.

**Click-To-Bid.** This is Superior's online bidding platform for cattle buying. Please note that high speed internet is required - this is not for dial-up or satellite internet. Registration is free, but you must become a member of [www.superiorclicktobid.com](http://www.superiorclicktobid.com) to sign up. Becoming a member is easy - just go to the homepage of [www.superiorclicktobid.com](http://www.superiorclicktobid.com) and follow the out-lined steps to get started. Input your information and select a username and password. You will receive an e-mail confirming you are a member. From that point forward you just have to sign in and select the sale you would like to register for and once approved you will receive an e-mail or call confirming which sale you are now registered for.

**Viewing the Auction.** The sale will be broadcast on DISH network channel 232. There is a delay if you are watching on television so please call ahead of the lots you are interested in bidding on. There are 2 places to view the sale broadcast live on the internet: [www.superiorlivestock.com](http://www.superiorlivestock.com) or [www.superiorclicktobid.com](http://www.superiorclicktobid.com). Just go to the home page of either website and select the auction. If you just want to watch the auction on your computer, smartphone or tablet go to [www.superiorlivestock.com](http://www.superiorlivestock.com), but if you want to bid over the computer you must go to [www.superiorclicktobid.com](http://www.superiorclicktobid.com). Remember you can call in to bid whether you watch on the TV or on the internet, but you must be a member of [www.superiorclicktobid.com](http://www.superiorclicktobid.com) to "click-to-bid". Your computer must have Flash Media Player installed for this website to view the auction. If you have any questions, please call the Superior Productions office at 800-431-4452.

Bidders who are successful in making purchases via satellite or internet will be contacted by the ranch after the sale to settle payment and make shipping arrangements.



**Lot 1...**

It will be a tough choice between lots 1 & 2, but we're certain these are the two best sons of Pawnee Canyon we've ever produced. We're equally certain that few Red Angus bulls improved performance in the cowherd, feedlot, rail and had calving ease. 6077 delivers plenty of Horsepower with a 130 ADG ratio top 3% Carcass weight and top 2% REA, but he's still in the best 20% for calving ease, Stability and Heifer Preg, and was born unassisted out of a 2-yr-old.

**WFL STOCKMAN 6077**  
1/23/16 WFL:6077  
3547173 [100% / A]

LJC PAWNEE CANYON S318  
**WFL PAWNEE CANYON 8127**  
WFL JULIAN 4179  
LJC MERLIN T179  
**WFL MERLIN 236B**  
WFL ENVY 9132

Individual Data									
act. BW	68								
WW ratio	109								
YW ratio	119								
SC	42.74								
Frame	MOD+								
F:G ratio 100									
Trait Ratio EPD / %									
ADG	130	0.32							
MARB	102	0.61	18%						
REA	111	0.63	2%						
CW	43	3%							
YG	-0.01	43%							
HerdBuilder: 132 / 13% GridMaster: 53 / 2%									
CED	BW	WW	YW	MLK	ME	HPG	CEM	STY	
8	-2.0	77	128	21	5	14	0	12	
21%	36%	4%	2%	52%	90%	12%	93%	20%	
AoD 2 dMPPA 103.6									

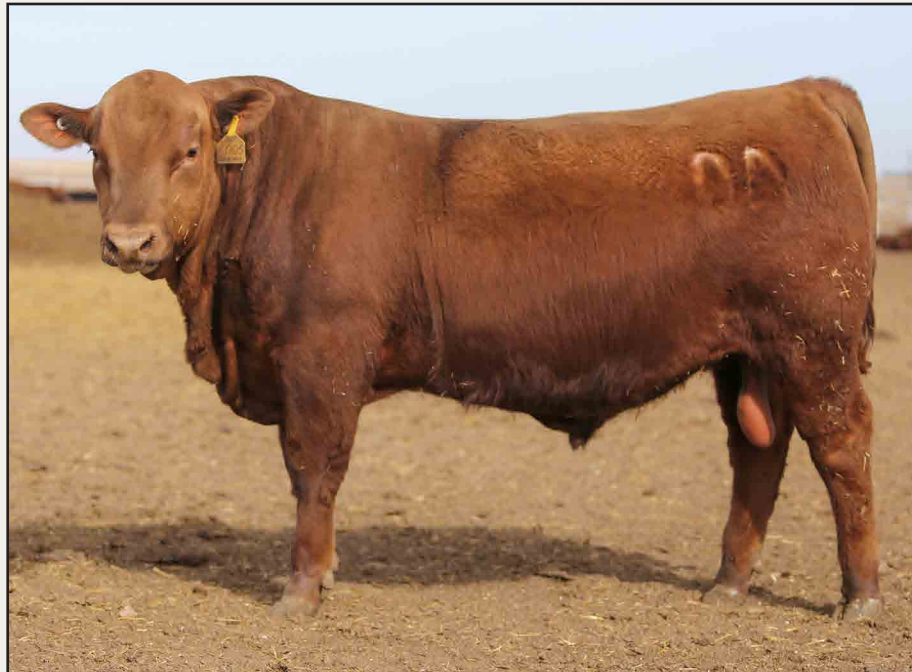
**RJRA NO WORRIES 6005**  
1/13/16 RJRA:6005  
3547298 [100% / A]

LJC PAWNEE CANYON S318  
**WFL PAWNEE CANYON 8127**  
WFL JULIAN 4179  
LSF PROSPECT 2035Z  
**RJRA PROSPECT 127B**  
RJRA JEWEL MAKER 7047

Individual Data									
act. BW	67								
WW ratio	107								
YW ratio	110								
SC	36.92								
Frame	MOD+								
F:G ratio 119									
Trait Ratio EPD / %									
ADG	112	0.24							
MARB	134	0.96	2%						
REA	98	0.33	17%						
CW	23	43%							
YG	0.05	71%							
HerdBuilder: 144 / 7% GridMaster: 54 / 1%									
CED	BW	WW	YW	MLK	ME	HPG	CEM	STY	
14	-5.1	64	102	22	2	14	3	12	
2%	5%	28%	24%	41%	59%	11%	76%	24%	
AoD 2 dMPPA 102.8									

**Lot 2...**

This son of proven (deceased and rare semen) cow herd builder, Pawnee Canyon is the perfect bull for large AI heifer projects - combining best 2% Calving Ease with loads of calf value: Top 1% GridMaster, 19% greater feed efficiency, 12% faster Gain, and best 2% Marbling. Keep all his daughters too with top 7% HerdBuilder.



**WFL POUNDMAKER 6015**  
1/16/16 WFL:6015  
3547194 [99.8% / B]

LJC MERLIN T179  
**WFL MERLIN 018A**  
WFL COMMITMENT 042Y  
LELAND FIRE T22-150Z  
**WFL 197 301B**  
TJR 856 324N X19

Individual Data									
act. BW	73								
WW ratio	116								
YW ratio	113								
SC	35.51								
Frame	MOD								
F:G ratio 96									
Trait Ratio EPD / %									
ADG	109	0.28							
MARB	104	0.66	14%						
REA	101	0.40	11%						
CW	48	2%							
YG	0.02	58%							
HerdBuilder: 105 / 38% GridMaster: 53 / 4%									
CED	BW	WW	YW	MLK	ME	HPG	CEM	STY	
4	-1.6	91	136	18	2	10	-4	11	
60%	44%	1%	1%	74%	65%	69%	99%	28%	
AoD 2 dMPPA 106.4									

Not only will lot 3 sire lots of pounds but they'll be premium pounds with his best 4% GridMaster Index. Leland Red Angus purchased his sire, Merlin 018A in our 2014 sale, and produced their leadoff bull in 2016. His dam is one of our rising stars weaning her first calf at a 116 WW ratio.



**Lot 3 - WFL POUNDMAKER 6015**

**WFL HORSEPOWER 6046**  
2/19/16 WFL:6046  
3547165 [100% / A]

LJC MERLIN T179  
**WFL MERLIN 018A**  
WFL COMMITMENT 042Y  
JXX TONKA 267Z  
**WFL TONKS 350B**  
WFL PACKER 062Y

Individual Data									
act. BW	69								
WW ratio	117								
YW ratio	127								
SC	38.12								
Frame	MOD+								
F:G ratio 112									
Trait Ratio EPD / %									
ADG	139	0.35							
MARB	74	0.36	61%						
REA	112	0.60	2%						
CW	57	1%							
YG	-0.04	31%							
HerdBuilder: 127 / 15% GridMaster: 54 / 1%									
CED	BW	WW	YW	MLK	ME	HPG	CEM	STY	
5	-2.5	97	153	22	6	10	0	12	
48%	30%	1%	1%	43%	93%	59%	93%	18%	
AoD 2 dMPPA 106.8									

Stout & Good! If you want to improve growth, conversion, gain, carcass weight or red meat yield - here is the bull. There won't be many bulls in Red Angus, (or SimAngus, or Balancer for that matter) that can spread a -2.5 birthweight to a 150+ yearling weight.



**Lot 4 - WFL HORSEPOWER 6046**

**WFL BOTTOM LINE 6003**  
1/11/16 WFL:6003  
3547195 [99.9% / B]

LJC MERLIN T179  
**WFL MERLIN 018A**  
WFL COMMITMENT 042Y  
5L TRADN DESIGNS 2367-331W  
**WFL NEXT 108B**  
WFL ENVY 0018

Individual Data									
act. BW	62								
WW ratio	109								
YW ratio	107								
SC	38.35								
Frame	MOD-								
F:G ratio 108									
Trait Ratio EPD / %									
ADG	104	0.24							
MARB	114	0.82	5%						
REA	105	0.52	5%						
CW	33	16%							
YG	-0.10	12%							
HerdBuilder: 140 / 9% GridMaster: 54 / 1%									
CED	BW	WW	YW	MLK	ME	HPG	CEM	STY	
8	-4.0	78	117	21	3	13	2	12	
21%	11%	3%	6%	49%	69%	19%	80%	16%	
AoD 2 dMPPA 103.6									

Moderate, Deep, Thick and Good! Born unassisted out of a 2-yr-old, 6003 was a mere 62 lbs at birth but grew to spread his -4 BW EPD to a best 6% YW EPD. However you measure success - Gain, Feed Efficiency, Calving Ease, Carcass Value, Replacement Females - 6003 will get you there faster.



**Lot 5 - WFL BOTTOM LINE 6003**



**LOT 6 - WFL ALL-AROUND 6030**

**6**

**WFL ALL-AROUND 6030**

1/18/16 WFL:6030  
3547192 [98.9% / B]

BECKTON DOMINOR T122 Z1  
**3SCC DOMAIN A163**  
3SCC EUCLA X723  
MUSHRUSH IMPRESSION X349  
**WFL IMPRESSIVE 358B**  
WFL ENVY 9093

Individual Data	
act. BW	61
WW ratio	112
YW ratio	115
SC	38.58
Frame	MOD

**F:G ratio 96**

HerdBuilder: 163 / 3%		GridMaster: 52 / 5%										
CED	BW	WW	YW	MLK	ME	HPG	CEM	STY	MARB	103	0.71	10%
10	-2.6	73	115	29	2	15	7	14	REA	111	0.43	10%
11%	28%	9%	8%	4%	59%	8%	13%	6%	CW	34	13%	
				AoD 2	dMPPA 104.8	YG	0.07	77%				

This is the first of a really nice sire group by Domain. Note the top 10% ranking for growth, post-weaning gain, cow herd and carcass traits... 10 traits in the best 13%! – all designed in a good footed, moderate framed, wide-based package.



**Lot 7 - WFL SPREAD 6063**

**7**

**WFL SPREAD 6063**

1/22/16 WFL:6063  
3547164 [99.7% / B]

BECKTON DOMINOR T122 Z1  
**3SCC DOMAIN A163**  
3SCC EUCLA X723  
LSF RAB EASY CALVER 2758Z  
**WFL PKR 2758 373B**  
WFL MERLIN 141Y

Individual Data	
act. BW	64
WW ratio	106
YW ratio	112
SC	33.71
Frame	MOD+

**F:G ratio 91**

HerdBuilder: 174 / 1%		GridMaster: 54 / 1%										
CED	BW	WW	YW	MLK	ME	HPG	CEM	STY	MARB	90	0.65	14%
11	-4.5	68	119	25	5	14	5	15	REA	107	0.54	4%
8%	8%	17%	5%	18%	89%	8%	37%	3%	CW	35	13%	
				AoD 2	dMPPA 102.4	YG	-0.01	43%				

Think the genetic trend at Wedel Beef Genetics is moving in the right direction? The first 9 bulls in the sale are all out of 2-yr-olds. Including this 11 CED to 119 YW curve bender with 10 traits in the best 18% and top 1% ranks indexes whether you want to raise replacements or retain ownership and sell on a value based grid.



**Lot 8 - WFL COWBOSS 6070**

**8**

**WFL COWBOSS 6070**

1/23/16 WFL:6070  
3547219 [99.7% / B]

LSF YIELD GRADE 0066X  
**WFL YIELD GRADE 223A**  
WFL DIRECT DESIGN 8058  
BIEBER H HUGHES W109  
**WFL W109 223B**  
WFL JULIAN N008 C776

Individual Data	
act. BW	52
WW ratio	100
YW ratio	104
SC	38.74
Frame	MOD

**F:G ratio 125**

HerdBuilder: 158 / 4%		GridMaster: 52 / 9%										
CED	BW	WW	YW	MLK	ME	HPG	CEM	STY	MARB	123	0.82	5%
9	-3.6	64	96	22	2	17	7	14	REA	95	0.23	29%
15%	15%	30%	35%	41%	61%	1%	16%	7%	CW	21	48%	
				AoD 2	dMPPA 100.0	YG	0.04	64%				

Gain, Grade and Feed Efficiency come as standard equipment on this moderate frame, attractive son of Yield Grade 223A – a best 4% marbling sire who was purchased by Lundgren Angus Ranch in our 2014 sale.

**9**

**RJRA YG 223 6021**

1/16/16 RJRA:6021  
3547305 [100%]

LSF YIELD GRADE 0066X  
**WFL YIELD GRADE 223A**  
WFL DIRECT DESIGN 8058  
LSF RAB SOVEREIGN X7780  
**RJRA SOVEREIGN 282B**  
RJRA ENVY 9155

Individual Data	
act. BW	70
WW ratio	111
YW ratio	109
SC	37.01
Frame	MOD-

**F:G ratio 91**

HerdBuilder: 152 / 5%		GridMaster: 53 / 4%										
CED	BW	WW	YW	MLK	ME	HPG	CEM	STY	MARB	114	0.90	3%
6	-1.8	69	108	18	3	15	5	14	REA	94	0.12	48%
40%	41%	15%	14%	76%	72%	8%	44%	5%	CW	32	18%	
				AoD 2	dMPPA 104.4	YG	0.00	44%				

Another moderate framed Yield Grade son with plenty of thickness and capacity and ample genetic power in terms of post-weaning gain and carcass value.



**Lot 9 - RJRA YG 223 6021**

**10**

**WFL B571 EPIC 6246**

2/22/16 WFL:6246  
3583000 [100% / A]

BECKTON EPIC K F075  
**BECKTON EPIC R397 K**  
BECKTON KIT F468 JL  
BECKTON JULIAN GG B571  
**WFL JULIAN 4179**  
MRM A664 K7 M09

Individual Data	
act. BW	89
WW ratio	ET
YW ratio	ET
SC	40.71
Frame	MOD-

**F:G ratio 96**

HerdBuilder: 143 / 8%		GridMaster: 50 / 27%										
CED	BW	WW	YW	MLK	ME	HPG	CEM	STY	MARB	0	0.38	58%
7	-3.3	58	95	19	-6	14	7	13	REA	0	0.28	22%
28%	18%	50%	36%	65%	9%	11%	17%	11%	CW	22	45%	
				AoD 12	dMPPA 96.5	YG	0.06	76%				

Up till now every bull in the sale has come from a two-year-old dam, so it's a special 12-yr-old that can keep up with the genetic. 4179 is the dam of Wedel herd sires, Pawnee Canyon & Nebula 165Z.

**11**

**WFL CONVERTER 6215**

2/19/16 WFL:6215  
3546975 [99.2% / B]

BECKTON EPIC K F075  
**BECKTON EPIC R397 K**  
BECKTON KIT F468 JL  
SCHULER FLAT IRON 5204R  
**WFL FLAT IRON**  
WFL JULIAN N008 C795

Individual Data	
act. BW	91
WW ratio	103
YW ratio	113
SC	38.12
Frame	MOD

**F:G ratio 132**

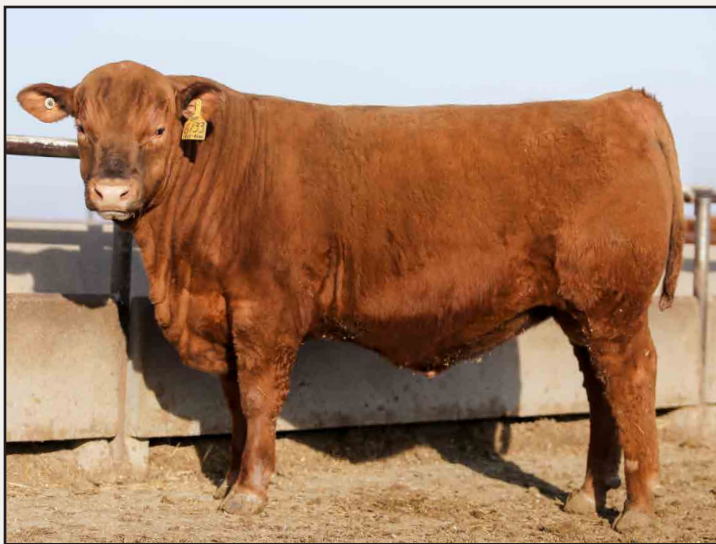
HerdBuilder: 103 / 41%		GridMaster: 51 / 22%										
CED	BW	WW	YW	MLK	ME	HPG	CEM	STY	MARB	119	0.56	24%
0	1.4	79	130	19	0	10	4	11	REA	99	0.22	30%
91%	91%	3%	1%	67%	46%	70%	61%	30%	CW	49	1%	
				AoD 6	dMPPA 105.1	YG	0.24	99%				

*Lot 11...*

It's hard to pack this much power in a moderate frame, but 6215 does it quite well. Study his contemporary group superiority in ADG and Feed Efficiency and Marbling. Out of a 6 year old dam who earned a 105 MPPA on west Kansas range.



**Lot 11 - WFL CONVERTER 6215**



**Lot 12 - WFL DEFENDER 6133**

**Lot 12...**

We used Defender for his elite carcass traits and calving ease as well as the heart girth and muscle expression he delivers – and which you can see in this top 1% GridMaster son.

**16**

**WFL TOP FLIGHT 6221**

2/19/16 3547028 WFL:6221 [99.8% / B]

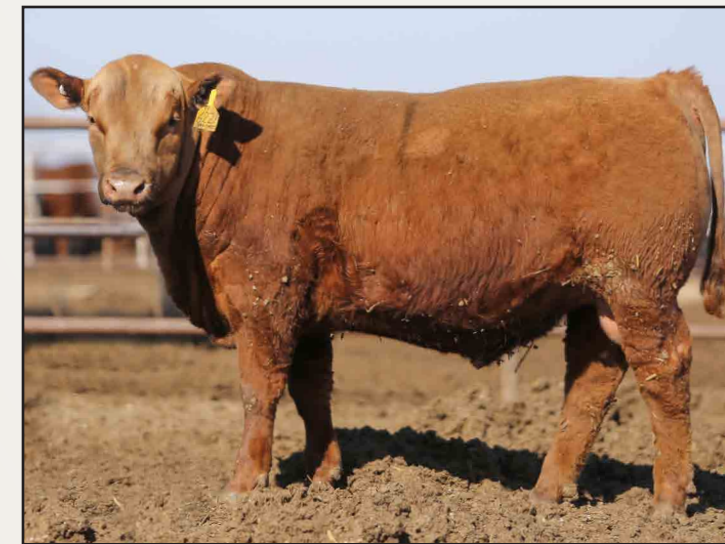
5L ADVANTAGE 3267-221Y  
5L TOP FLIGHT 3010-491A  
5L OSCE 2948-3010

BROWN COMMITMENT S7206  
**WFL COMMITMENT 189Y**  
WFL CHEROKEE 6024

Individual Data	
act. BW	91
WW ratio	99
YW ratio	96
SC	37.62
Frame	MOD-

F:G ratio 97		
Trait	Ratio	EPD / %
ADG	93	0.15
MARB	65	0.34 66%
REA	90	0.21 30%
CW	21	48%
YG	0.01	49%

HerdBuilder: 113 / 28%				GridMaster: 48 / 76%				
CED	BW	WW	YW	MLK	ME	HPG	CEM	STY
4	-0.6	64	88	23	0	14	2	12
55%	63%	28%	50%	34%	43%	10%	82%	16%
				AoD 5		dMPPA 97.1		



**Lot 16 - WFL TOP FLIGHT 6221**

**12**

**WFL DEFENDER 6133**

2/11/16 3547029 WFL:6133 [99.9% / B]

5L ADVOCATE 817-14W  
**5L DEFENDER 560-30Z**  
5L BLACK ADINA 525-560

WFL MISSION 9029  
**WFL MISSION 9029 182Y**  
WFL VACATION 6137

Individual Data	
act. BW	57
WW ratio	
YW ratio	
SC	37.36
Frame	MOD-

F:G ratio 89		
Trait	Ratio	EPD / %
ADG	0.26	
MARB	0	1.15 1%
REA	0	0.65 2%
CW	27	31%
YG	-0.13	9%

HerdBuilder: 155 / 4%				GridMaster: 55 / 1%				
CED	BW	WW	YW	MLK	ME	HPG	CEM	STY
9	-3.9	64	105	22	6	15	4	13
19%	13%	28%	19%	42%	92%	6%	56%	8%
				AoD 5		dMPPA 105.1		

**13**

**WFL DEFENDER 6112**

2/8/16 3547106 WFL:6112 [99.9% / B]

5L ADVOCATE 817-14W  
**5L DEFENDER 560-30Z**  
5L BLACK ADINA 525-560

WFL PAWNEE CANYON 8127  
**WFL PAWNEE 8127 021A**  
WFL MERLIN 128Y

Individual Data	
act. BW	75
WW ratio	95
YW ratio	100
SC	34.26
Frame	MOD

F:G ratio 117		
Trait	Ratio	EPD / %
ADG	106	0.24
MARB	117	1.02 1%
REA	93	0.42 10%
CW	24	41%
YG	-0.09	15%

HerdBuilder: 137 / 10%				GridMaster: 55 / 1%				
CED	BW	WW	YW	MLK	ME	HPG	CEM	STY
12	-4.5	62	101	20	3	14	4	10
6%	8%	37%	25%	62%	69%	8%	47%	41%
				AoD 3		dMPPA 92.0		

Another top 1% GridMaster, 1% Marbling son of Defender who spreads lowest 8% Birthweight to over 100 YW with excellent gain and feed efficiency.

**17**

**WFL EPIC A7540 6322**

3/5/16 3546962 WFL:6322 [99.8% / B]

BECKTON EPIC R397 K  
**BROWN EPIC A7540**  
BROWN MS PACKER X7564

LJC PAWNEE CANYON S318  
**WFL PAWNEE CANYON 0290**  
WFL CHERRY 6176

Individual Data	
act. BW	83
WW ratio	104
YW ratio	105
SC	35.1
Frame	MOD

F:G ratio 111		
Trait	Ratio	EPD / %
ADG	107	0.26
MARB	96	0.63 16%
REA	105	0.68 1%
CW	34	13%
YG	0.01	50%

HerdBuilder: 130 / 14%				GridMaster: 52 / 9%				
CED	BW	WW	YW	MLK	ME	HPG	CEM	STY
4	-1.4	69	111	24	5	15	1	13
59%	48%	16%	11%	27%	88%	7%	91%	9%
				AoD 6		dMPPA 106.2		

This will be the first son to sell sired by A7540, who ranks exceptionally high for fertility traits as well as carcass traits. This son, 6322 adds another dimension of improved feed efficiency.

**18**

**WFL TOP FLIGHT 6228**

2/20/16 3546911 WFL:6228 [100% / A]

5L ADVANTAGE 3267-221Y  
**5L TOP FLIGHT 3010-491A**  
5L OSCE 2948-3010

LELAND RIM 6226S  
**WFL RIM VIEW 8080**  
6134

Individual Data	
act. BW	75
WW ratio	96
YW ratio	93
SC	32.65
Frame	MOD-

F:G ratio 86		
Trait	Ratio	EPD / %
ADG	90	0.16
MARB	98	0.58 21%
REA	95	0.07 57%
CW	15	68%
YG	0.12	90%

HerdBuilder: 135 / 11%				GridMaster: 49 / 43%				
CED	BW	WW	YW	MLK	ME	HPG	CEM	STY
8	-3.5	60	85	25	3	15	8	12
25%	16%	43%	58%	20%	70%	8%	9%	17%
				AoD 8		dMPPA 105.8		

Keep all the daughters from this bull with his strong breed rank for fertility, longevity, and cow productivity. His 8-yr-old dam has maintained a 106 MPPA.

**14**

**WFL TOP GUN 6194**

2/17/16 3547083 WFL:6194 [99.8% / B]

5L ADVANTAGE 3267-221Y  
**5L TOPGUN 560-65B**  
5L BLACK ADINA 525-560

RED SIX MILE UTAH 455U  
**WFL UTAH 229Z**  
WFL CHEROKEE 6024

Individual Data	
act. BW	82
WW ratio	106
YW ratio	105
SC	41.55
Frame	MOD

F:G ratio 114		
Trait	Ratio	EPD / %
ADG	104	0.18
MARB	53	0.18 91%
REA	114	0.48 7%
CW	22	45%
YG	-0.16	6%

HerdBuilder: 138 / 10%				GridMaster: 49 / 49%				
CED	BW	WW	YW	MLK	ME	HPG	CEM	STY
9	-2.5	67	95	23	-3	14	9	12
20%	28%	21%	37%	33%	21%	9%	4%	21%
				AoD 4		dMPPA 102.7		

Sired by TopGun – the \$53,000 maternal brother to Defender and Independence.

**15**

**RJRA FRANKLY 6066**

1/23/16 3547300 RJRA:6066 [100% / A]

LJC MERLIN T179  
**WFL MERLIN 018A**  
WFL COMMITMENT 042Y

BIEBER H HUGHES W109  
**RJRA W109 312B**  
RJRA NEBULA 0050 216Z

Individual Data	
act. BW	64
WW ratio	100
YW ratio	105
SC	34.74
Frame	MOD-

F:G ratio 85		
Trait	Ratio	EPD / %
ADG	112	0.24
MARB	89	0.51 31%
REA	110	0.43 9%
CW	34	13%
YG	-0.09	15%

HerdBuilder: 150 / 6%				GridMaster: 52 / 5%				
CED	BW	WW	YW	MLK	ME	HPG	CEM	STY
6	-3.7	79	118	18	-1	13	3	14
39%	14%	3%	5%	77%	39%	20%	67%	5%
				AoD 2		dMPPA 100.0		

Merlin 18A son with plenty of depth in his heart girth and flank and ranks in the best 5% for growth, muscle cow herd longevity and Profit.



**Lot 18 - WFL TOP FLIGHT 6228**



**Lot 19 - ALC MR MEATLOAF D05**

**19** **ALC MR MEATLOAF D05**  
 1/26/16 ALC:D05  
 3550057 [96.6% / B]

BECKTON NEBULA P P707  
**HXC MEATLOAF 0002X**  
 HXC ZIMA 338N  
 LJC MISSION STATEMENT P27  
**ALC MISS STATEMENT**  
 ALC MISS CHEYENE S614

Individual Data							
act. BW	78						
WW ratio	104						
YW ratio	105						
SC	38.31						
Frame	MOD						

F:G ratio		96	
Trait	Ratio	EPD / %	
ADG	106	0.31	
MARB	86	0.71 10%	
REA	111	0.38 12%	
CW	48	1%	
YG	0.00	49%	

HerdBuilder: 128 / 15%				GridMaster: 53 / 3%			
CED	BW	WW	YW	MLK	ME	HPG	CEM
8	-0.6	83	133	19	3	10	-1
25%	64%	1%	1%	69%	76%	60%	98%
RA50K				AoD 3 dMPPA 101.7			

Long-bodied, strong topped power bull that ranks at the top 1% for pay-weight at every potential market endpoint. However, he still ranks in the easiest calving 25% of Red Angus.



**Lot 20 - ALC MR MEATLOAF D06**

**20** **ALC MR MEATLOAF D06**  
 1/26/16 ALC:D06  
 3550080 [99.7% / B]

BECKTON NEBULA P P707  
**HXC MEATLOAF 0002X**  
 HXC ZIMA 338N  
 LSF JBOB EXPECTATION 6034S  
**ALC MISS EXPECTATION A342**  
 WFL FLATIRON 0084

Individual Data							
act. BW	96						
WW ratio	109						
YW ratio	113						
SC	37.81						
Frame	LARGE-						

F:G ratio		104	
Trait	Ratio	EPD / %	
ADG	118	0.29	
MARB	82	1.05 1%	
REA	106	0.13 46%	
CW	49	1%	
YG	0.12	90%	

HerdBuilder: 120 / 21%				GridMaster: 53 / 3%			
CED	BW	WW	YW	MLK	ME	HPG	CEM
4	0.9	86	132	18	1	8	1
58%	87%	1%	1%	77%	51%	93%	91%
RA50K				AoD 3 dMPPA 103.6			

Turn out this bull and his half-brother who sells as Lot 19 and double down on payweight and carcass value.



**Lot 21 - WFL DOMAIN 6139**

**21** **WFL DOMAIN 6139**  
 2/12/16 WFL:6139  
 3547207 [100% / A]

BECKTON DOMINOR T122 Z1  
**3SCC DOMAIN A163**  
 3SCC EUCLA X723  
 KOESTER CHIVAS 005  
**WFL CHIVAS 087B**  
 WFL MERLIN 171Z

Individual Data							
act. BW	86						
WW ratio	107						
YW ratio	109						
SC	36.39						
Frame	MOD-						

F:G ratio		96	
Trait	Ratio	EPD / %	
ADG	113	0.29	
MARB	79	0.46 39%	
REA	104	0.32 18%	
CW	42	4%	
YG	0.12	90%	

HerdBuilder: 149 / 6%				GridMaster: 51 / 23%			
CED	BW	WW	YW	MLK	ME	HPG	CEM
4	0.1	76	122	23	3	16	5
55%	75%	5%	4%	32%	76%	3%	40%
AoD 2				dMPPA 102.8			

**22** **WFL 165Z 6008**  
 1/15/16 WFL:6008  
 3547256 [99.7% / B]

BECKTON NEBULA P P707  
**WFL NEBULA 707 165Z**  
 WFL JULIAN 4179  
 JIX TONKA 267Z  
**WFL TONKA 187B**  
 WFL LT 142 194Y

Individual Data							
act. BW	53						
WW ratio	93						
YW ratio	92						
SC	37.48						
Frame	MOD-						

F:G ratio		100	
Trait	Ratio	EPD / %	
ADG	92	0.18	
MARB	102	0.68 12%	
REA	86	-0.24 98%	
CW	9	81%	
YG	0.03	63%	

HerdBuilder: 171 / 2%				GridMaster: 51 / 13%			
CED	BW	WW	YW	MLK	ME	HPG	CEM
16	-5.8	53	81	26	1	14	7
1%	2%	67%	66%	12%	51%	9%	10%
AoD 2				dMPPA 97.2			

"Sleep-all-night" calving ease with all reproductive traits in the top 10%.



**Lot 22 - WFL 165Z 6008**

**23** **WFL 8127 6007**  
 1/14/16 WFL:6007  
 3547178 [100% / A]

LJC PAWNEE CANYON S318  
**WFL PAWNEE CANYON 8127**  
 WFL JULIAN 4179  
 LJC MERLIN T179  
**WFL MERLIN 041B**  
 WFL RED D 121Z

Individual Data							
act. BW	60						
WW ratio	102						
YW ratio	101						
SC	34.45						
Frame	MOD-						

F:G ratio		96	
Trait	Ratio	EPD / %	
ADG	100	0.23	
MARB	91	0.45 42%	
REA	100	0.59 3%	
CW	21	49%	
YG	-0.14	7%	

HerdBuilder: 135 / 11%				GridMaster: 52 / 5%			
CED	BW	WW	YW	MLK	ME	HPG	CEM
13	-5.4	62	99	21	5	14	3
3%	4%	35%	28%	53%	87%	9%	75%
AoD 2				dMPPA 100.8			

Pawnee Canyon & Merlin are responsible for much of the progress we've made in both our cowherd as well as success in the feedlot. 6007 puts them both in one pedigree and has as much rib shape and depth of quarter as we can put in a heifer bull.



**Lot 23 - WFL 8127 6007**

**24** **WFL DEFENDER 6095**  
 2/3/16 WFL:6095  
 3547163 [98.5% / B]

5L ADVOCATE 817-14W  
**5L DEFENDER 560-30Z**  
 5L BLACK ADINA 525-560  
 BECKTON EPIC R397 K  
**WFL EPIC 175A**  
 WFL 9895-C310

Individual Data							
act. BW	97						
WW ratio	112						
YW ratio	115						
SC	42.1						
Frame	MOD+						

F:G ratio		94	
Trait	Ratio	EPD / %	
ADG	120	0.31	
MARB	101	0.86 4%	
REA	125	0.64 2%	
CW	43	4%	
YG	0.05	68%	

HerdBuilder: 122 / 20%				GridMaster: 53 / 2%			
CED	BW	WW	YW	MLK	ME	HPG	CEM
4	-1.0	76	125	19	-2	13	6
54%	55%	5%	2%	67%	25%	21%	18%
AoD 3				dMPPA 106.9			

All the shape and carcass you'd expect from a Defender but with breed-leading Gain, Carcass weight and yearling growth. This is a truly unique cow bull.



**Lot 24 - WFL DEFENDER 6095**

**25****WFL DOMAIN 6017**1/16/16 WFL:6017  
3547168 [99.2% / B]

Individual Data	
act. BW	58
WW ratio	89
YW ratio	100
SC	35.51
Frame	MOD-

BECKTON DOMINOR T122 Z1  
**3SCC DOMAIN A163**  
 3SCC EUCLA X723  
 LJC MERLIN T179  
**WFL MERLIN 203B**  
 WFL CHEROKEE 3035

F:G ratio		102
Trait	Ratio	EPD / %
ADG	113	0.25
MARB	72	0.37 59%
REA	107	0.46 8%
CW	19	54%
YG	-0.01	40%

HerdBuilder: 159 / 4%					GridMaster: 51 / 12%					
CED	BW	WW	YW	MLK	ME	HPG	CEM	STY		
12	-4.7	54	94	25	2	14	3	15		
5%	7%	65%	40%	16%	60%	10%	72%	4%		
AoD 2					dMPPA 95.6					

**Lot 25 - WFL DOMAIN 6017****29****WFL 185Z 6119**2/10/16 WFL:6119  
3547177 [93.5% / B]

Individual Data	
act. BW	76
WW ratio	111
YW ratio	111
SC	36.32
Frame	MOD

BECKTON NEBULA P P707  
**WFL NEBULA 707 165Z**  
 WFL JULIAN 4179  
 BIEBER H HUGHES W109  
**WFL W109 237B**  
 WFL UTAH 227Z

F:G ratio		88
Trait	Ratio	EPD / %
ADG	112	0.25
MARB	77	0.34 66%
REA	122	0.26 25%
CW	31	20%
YG	0.02	57%

HerdBuilder: 174 / 1%					GridMaster: 51 / 16%					
CED	BW	WW	YW	MLK	ME	HPG	CEM	STY		
12	-3.4	72	112	19	-4	16	11	14		
5%	17%	10%	10%	63%	15%	3%	1%	6%		
AoD 2					dMPPA 104.4					

**Lot 29 - WFL 185Z 6119**

The elite HerdBuilder combines best 5% Calving ease with best 10% growth

**26****RJRA DOMAIN 6016**1/16/16 RJRA:6016  
3547299 [99.8%]

Individual Data	
act. BW	71
WW ratio	111
YW ratio	109
SC	35.51
Frame	MOD

BECKTON DOMINOR T122 Z1  
**3SCC DOMAIN A163**  
 3SCC EUCLA X723  
 SCHULER NEBULA P707 0050X  
**RJRA NEBULA 050X 150B**  
 RJRA LANCER 4146 9176

F:G ratio		102
Trait	Ratio	EPD / %
ADG	107	0.27
MARB	118	0.79 6%
REA	92	0.19 35%
CW	32	17%
YG	0.14	94%

HerdBuilder: 157 / 4%					GridMaster: 52 / 7%					
CED	BW	WW	YW	MLK	ME	HPG	CEM	STY		
8	-2.1	67	110	25	0	13	5	15		
24%	36%	20%	13%	16%	46%	17%	34%	4%		
AoD 2					dMPPA 104.4					

**27****WFL FRANKLY 6083**1/28/16 WFL:6083  
3547254 [100% / A]

Individual Data	
act. BW	49
WW ratio	106
YW ratio	102
SC	37.9
Frame	MOD-

LJC MERLIN T179  
**WFL MERLIN 018A**  
 WFL COMMITMENT 042Y  
 LSF RAB EASY CALVER 2758Z  
**WFL PKR 2758 335B**  
 WFL COMMITMENT 042Y

F:G ratio		102
Trait	Ratio	EPD / %
ADG	97	0.22
MARB	119	0.95 2%
REA	108	0.69 1%
CW	21	49%
YG	-0.20	4%

HerdBuilder: 143 / 8%					GridMaster: 55 / 1%					
CED	BW	WW	YW	MLK	ME	HPG	CEM	STY		
10	-7.4	70	105	23	6	11	0	13		
11%	1%	13%	18%	31%	91%	51%	94%	13%		
AoD 2					dMPPA 102.4					

**30****WFL 165Z 6057**1/21/16 WFL:6057  
3547215 [93.8% / B]

Individual Data	
act. BW	78
WW ratio	94
YW ratio	102
SC	35.18
Frame	MOD

BECKTON NEBULA P P707  
**WFL NEBULA 707 165Z**  
 WFL JULIAN 4179  
 BIEBER H HUGHES W109  
**WFL HUGHES 022B**  
 WFL PRAIRIE FIRE 004Z

F:G ratio		93
Trait	Ratio	EPD / %
ADG	112	0.24
MARB	84	0.37 59%
REA	94	0.28 22%
CW	25	35%
YG	0.02	59%

HerdBuilder: 176 / 1%					GridMaster: 51 / 19%					
CED	BW	WW	YW	MLK	ME	HPG	CEM	STY		
13	-3.6	64	102	20	-3	16	8	14		
3%	15%	30%	23%	60%	19%	2%	5%	4%		
AoD 2					dMPPA 97.6					

**31****WFL REBEL A759 6447**3/31/16 WFL:6447  
3547042 [98.8% / B]

Individual Data	
act. BW	89
WW ratio	114
YW ratio	114
SC	34.94
Frame	MOD

SCHULER REBEL 0029X  
**SCHULER REBEL A759**  
 SOR BRASKA LAN T899  
 LJC MERLIN T179  
**WFL MERLIN 242Y**  
 WFL BIG CHER 4193

F:G ratio		123
Trait	Ratio	EPD / %
ADG	114	0.29
MARB	96	0.45 41%
REA	104	0.38 12%
CW	49	1%
YG	0.17	97%

HerdBuilder: 124 / 18%					GridMaster: 50 / 31%					
CED	BW	WW	YW	MLK	ME	HPG	CEM	STY		
5	1.1	84	130	20	5	9	3	13		
46%	89%	1%	1%	54%	87%	76%	65%	10%		
AoD 5					dMPPA 105.8					

The first son of A759 to sell, and he's a powerhouse. Note his double digit superiority for weaning, yearling, gain and F:G ratios.

Attractive Domain son balancing 10 traits in the top third of the breed and single digit indices.

This heifer bull is also a best 1% Gridmaster who spreads the growth curve from lowest 1% birthweight to top 18% growth.

Lots 29 &amp; 30 are ¾ brothers with near identical genotypes – both heifer bulls with over 100 YW, both top 1% HerdBuilder and top 20% GridMaster indices – turn them both out for a uniformly valuable calf crop.

**28****WFL FRANKLY 6004**1/11/16 WFL:6004  
3547238 [99.9% / B]

Individual Data	
act. BW	47
WW ratio	95
YW ratio	96
SC	33.35
Frame	MOD-

LJC MERLIN T179  
**WFL MERLIN 018A**  
 WFL COMMITMENT 042Y  
 LSF PROSPECT 2035Z  
**WFL PROSPECT 171B**  
 WFL PAWNEE CANYON 0290

F:G ratio		124
Trait	Ratio	EPD / %
ADG	97	0.21
MARB	71	0.39 56%
REA	97	0.48 7%
CW	20	52%
YG	-0.13	9%

HerdBuilder: 120 / 22%					GridMaster: 52 / 11%					
CED	BW	WW	YW	MLK	ME	HPG	CEM	STY		
11	-5.5	66	99	25	5	11	-1	11		
10%	3%	22%	29%	17%	85%	45%	96%	29%		
AoD 2					dMPPA 98.0					

**32****WFL EPIC 6160**2/14/16 WFL:6160  
3547151 [99.6% / B]

Individual Data	
act. BW	82
WW ratio	105
YW ratio	102
SC	38.45
Frame	MOD-

BECKTON EPIC K F075  
**BECKTON EPIC R397 K**  
 BECKTON KIT F468 JL  
 5L DOUBLE DESIGN 1177-227W  
**WFL DD 100A**  
 WFL MERLIN 0205

F:G ratio		106
Trait	Ratio	EPD / %
ADG	98	0.24
MARB	67	0.12 95%
REA	110	0.37 13%
CW	34	13%
YG	0.14	93%

HerdBuilder: 123 / 18%					GridMaster: 48 / 66%					
CED	BW	WW	YW	MLK	ME	HPG	CEM	STY		
1	-0.5	70	109	18	-6	13	4	13		
88%	64%	13%	13%	71%	10%	16%	47%	9%		
AoD 3					dMPPA 100.6					

**Lot 32 - WFL EPIC 6160**

Selection for highly efficient sons is a good strategy to improve feed efficiency in the cowherd. This calving ease specialist is also was very efficient in terms of feed conversion.



**33****ALC MR SAGA D45**2/1/16  
3570434  
ALC:D45  
[93.8% / B]

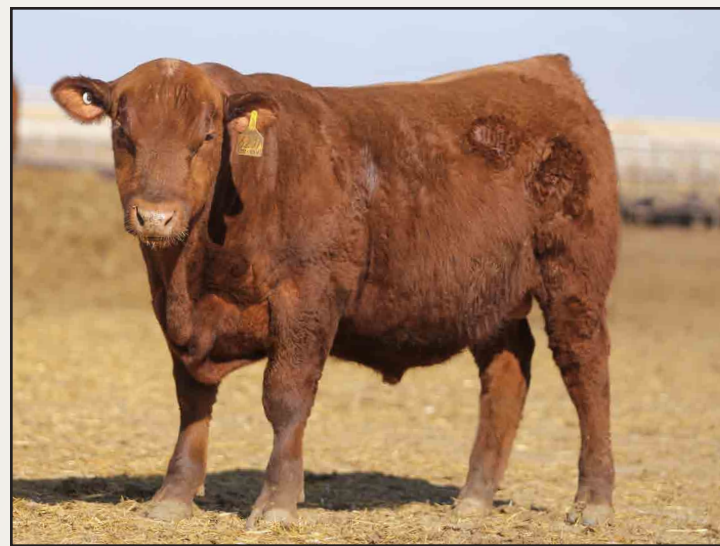
Individual Data		
act. BW		82
WW ratio		
YW ratio		
SC		39
Frame		MOD+

F:G ratio		91
Trait	Ratio	EPD / %

ADG		0.33	
MARB	0	0.46	39%
REA	0	0.20	33%
CW	45	2%	
YG	0.11	88%	

BECKTON EPIC R397 K  
**LSF SAGA 1040Y**  
LSF MINOLA T7172 W9041LJC MISSION STATEMENT P27  
**ALC MISS MS 2231**  
ALC MISS LARAMIE U817

HerdBuilder: 120 / 21%					GridMaster: 52 / 7%					
CED	BW	WW	YW	MLK	ME	HPG	CEM	STY		
5	-1.1	76	129	25	3	14	4	11		
46%	53%	5%	2%	16%	71%	11%	54%	37%		
RA50K				AoD 4				dMPPA		

**Lot 33 - WFL YG 223A 6231****37****ALC MR MEATLOAF D148**3/6/16  
3550061  
ALC:D148  
[100% / A]

Individual Data		
act. BW		72
WW ratio		110
YW ratio		103
SC		39.1
Frame		LARGE-

F:G ratio		93
Trait	Ratio	EPD / %

ADG		94	0.27
MARB	89	1.16	1%
REA	101	0.13	45%
CW	44	3%	
YG	0.11	88%	

BECKTON NEBULA P P707  
**HXC MEATLOAF 0002X**  
HXC ZIMA 338N5L DESTINATION 893-6215  
**ALC MIS DESTINATION A318**  
SOR MARLEE BRN CMT 9266W

HerdBuilder: 170 / 2%					GridMaster: 54 / 1%					
CED	BW	WW	YW	MLK	ME	HPG	CEM	STY		
7	-0.8	84	127	17	3	15	7	15		
28%	60%	1%	2%	80%	68%	5%	16%	3%		
RA50K				AoD 3				dMPPA	102.9	

Pay attention through the entire sale offering. Almost at the end of the first run of Red Angus bulls and we have a best 1% GridMaster, Best 2% HerdBuilder.

**Lot 37 - ALC MR MEATLOAF D148 (right), with Lot 107 (left)****34****WFL YG 223A 6231**2/20/16  
3546874  
WFL:6231  
[99.6% / B]

Individual Data		
act. BW		88
WW ratio		110
YW ratio		106
SC		37.65
Frame		MOD+

F:G ratio		122
Trait	Ratio	EPD / %

ADG		101	0.22
MARB	96	0.66	14%
REA	104	0.33	17%
CW	38	7%	
YG	-0.02	39%	

LSF YIELD GRADE 0066X  
**WFL YIELD GRADE 223A**  
WFL DIRECT DESIGN 8058NORTH SANTIAM 0424  
**WFL LILLIE 6193**  
WFL LANCER BO74 4103

HerdBuilder: 111 / 31%					GridMaster: 50 / 28%					
CED	BW	WW	YW	MLK	ME	HPG	CEM	STY		
1	1.2	78	113	19	7	14	3	12		
83%	90%	4%	9%	65%	95%	14%	70%	22%		
				AoD 10				dMPPA	103.4	

**35****WFL 8127 6283**2/29/16  
3547204  
WFL:6283  
[100% / A]

Individual Data		
act. BW		79
WW ratio		107
YW ratio		
SC		
Frame		MOD

F:G ratio		
Trait	Ratio	EPD / %

ADG			0.26
MARB	113	0.84	5%
REA	99	0.33	17%
CW	32	18%	
YG	0.06	76%	

LJC PAWNEE CANYON S318  
**WFL PAWNEE CANYON 8127**  
WFL JULIAN 4179BECKTON EPIC R397 K  
**WFL EPIC 162B**  
WFL NORSEMAN 7002

HerdBuilder: 127 / 16%					GridMaster: 52 / 5%					
CED	BW	WW	YW	MLK	ME	HPG	CEM	STY		
7	-2.2	69	110	19	0	14	1	12		
32%	33%	15%	12%	63%	40%	14%	87%	22%		
				AoD 2				dMPPA	102.8	

**38****WFL 159B 6120**2/10/16  
3547136  
WFL:6120  
[99.8% / B]

Individual Data		
act. BW		94
WW ratio		104
YW ratio		106
SC		37.32
Frame		MOD

F:G ratio		103
Trait	Ratio	EPD / %

ADG		108	0.29
MARB	100	0.77	7%
REA	98	0.57	3%
CW	49	1%	
YG	-0.03	34%	

5L DEFENDER 560-30Z  
**5L DEFENDER 06Y-159B**  
5L NACOMA 849-06YSCHULER NEBULA P707 0050X  
**WFL NEBULA 0050X 194A**  
WFL MISSION STATEMENT 8067

HerdBuilder: 115 / 26%					GridMaster: 51 / 13%					
CED	BW	WW	YW	MLK	ME	HPG	CEM	STY		
-1	3.6	77	124	19	3	13	2	13		
96%	99%	4%	3%	69%	75%	19%	82%	12%		
				AoD 3				dMPPA	100.6	

Some of the highest horsepower Defender sons to sell all year will be in Leoti, KS! Here's a cow bull with the gain and grade genetics to sire elite calf crop value.

**39****WFL REBEL A759 6338**3/6/16  
3547027  
WFL:6338  
[98.5% / B]

Individual Data		
act. BW		83
WW ratio		101
YW ratio		103
SC		35.13
Frame		

F:G ratio		106
Trait	Ratio	EPD / %

ADG		105	0.25
MARB	155	0.95	2%
REA	110	0.50	6%
CW	35	11%	
YG	0.05	72%	

SCHULER REBEL 0029X  
**SCHULER REBEL A759**  
SOR BRASKA LAN T899LJC MERLIN T179  
**WFL MERLIN 157Y**  
WFL ENTERPRISE 6006

HerdBuilder: 113 / 28%					GridMaster: 52 / 6%					
CED	BW	WW	YW	MLK	ME	HPG	CEM	STY		
6	-0.1	70	110	23	5	9	3	11		
38%	71%	13%	12%	35%	85%	82%	76%	26%		
				AoD 5				dMPPA	98.0	

An incredible 155 IMF ratio supports a top 2% ranking for Marbling EPD.

**36****ALC MR MEATLOAF D180**2/5/16  
3550099  
ALC:D180  
[100% / A]

Individual Data		
act. BW		84
WW ratio		
YW ratio		
SC		42.13
Frame		MOD-

F:G ratio		105
Trait	Ratio	EPD / %

ADG			0.22
MARB	0	0.83	5%
REA	0	0.26	25%
CW	25	35%	
YG	0.05	72%	

BECKTON NEBULA P P707  
**HXC MEATLOAF 0002X**  
HXC ZIMA 338NBUF CRK TETON R088  
**TR CEDAR WT928**  
TR CEDAR ST684

HerdBuilder: 143 / 8%					GridMaster: 52 / 8%					
CED	BW	WW	YW	MLK	ME	HPG	CEM	STY		
12	-2.9	66	101	17	-2	8	-1	14		
6%	23%	22%	25%	78%	31%	90%	98%	5%		
RA50K				AoD 7				dMPPA	92.2	

Moderate framed, big scrotal son of Meatloaf that spreads best 6% calving ease to 100+ Yearling weight, and has single digit ranks for both HerdBuilder and GridMaster profit indices.





## SimAngus & Char x Red Angus Hybrids

Over the last several years we have offered SimAngus and Charolais x Red Angus hybrid bulls to our customers who want a user-friendly way of gaining the benefits of heterosis in their calf crops and cow herds. Heterosis improves calf vigor, feedlot health, cow herd longevity and fertility. The Charolais and Simmental genetics that go into these hybrids are selected to complement the carcass quality, calving ease and maternal traits of our Red Angus. We strive to produce good disposition hybrid bulls that should improve Yield Grade, post-weaning gain and feed conversion without increasing mature cow size.



**Lot 40 - WTY 085B 6049**

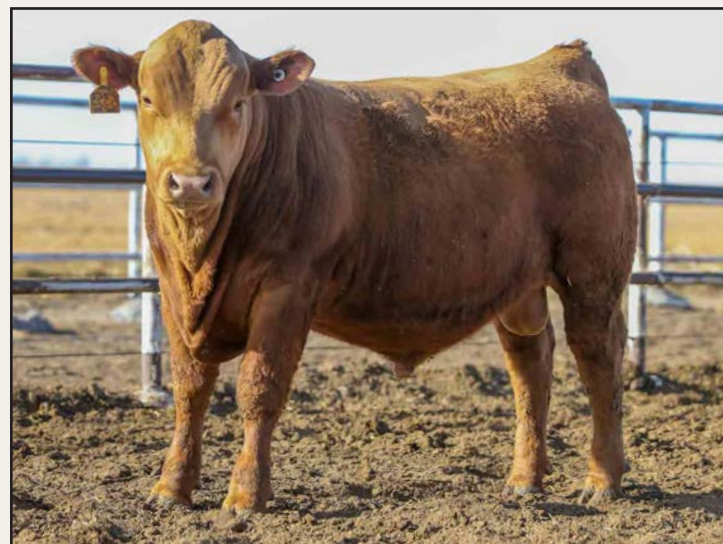
**40** **WTY 085B 6049**  
 1/20/16 WTY:6049  
 3547277 [74.2% / 3]

WFL NEBULA 707 165Z  
**WFL 165Z 085B**  
 WFL BEEFMAKER 116Z  
 JJX TONKA 267Z  
**WTY TONKA 279B**  
 WTY BEEFKING 142Y

Individual Data									
act. BW	71								
WW ratio	104								
YW ratio	108								
SC	37.64								
Frame	MOD								

F:G ratio 122												
Trait Ratio EPD / %												
HerdBuilder: 118 / 23%					GridMaster: 53 / 3%					ADG	113	0.26
CED	BW	WW	YW	MLK	ME	HPG	CEM	STY	MARB	105	0.68	12%
8	-2.7	77	119	22	0	11	6	10	REA	108	0.51	5%
22%	26%	4%	5%	43%	48%	39%	27%	58%	CW	36	10%	
AoD 2										dMPPA	101.6	
										YG	-0.09	14%

Two years ago, 85B was the high selling composite bull going to Mary Otley of Diamond, OR. This year one of his first sons is the lead-off Red Composite bull, and he was 22% more feed efficient and has carcass value strong enough to be in the top 3% of all Red Angus for GridMaster Index.



**Lot 41 - WTY PEYTON 6353**

**41** **WTY PEYTON 6353**  
 3/8/16 WTY:6353  
 3547274 [74.6% / 3]

5L QUARTERBACK 1205-5337  
**LSF SRR QUARTERBACK 3021A**  
 LSF REBELLA U8221 W9928  
 WS BEEF MAKER R13  
**WTY BEEFMAKER 180Z**  
 WTY LELAND VACATION C654

Individual Data									
act. BW	90								
WW ratio	113								
YW ratio	109								
SC	43.2								
Frame	MOD								

F:G ratio 106												
Trait Ratio EPD / %												
HerdBuilder: 88 / 63%					GridMaster: 48 / 63%					ADG	105	0.19
CED	BW	WW	YW	MLK	ME	HPG	CEM	STY	MARB	76	0.31	72%
1	0.8	77	107	20	4	13	4	9	REA	107	0.58	3%
84%	86%	4%	16%	55%	83%	17%	46%	65%	CW	34	14%	
AoD 4										dMPPA	103.3	
										YG	-0.06	21%

Put an end to YG4's with this big ribeye, long-bodied, deep ribbed SimAngus cow bull. One of the most eye appealing power composites we'll offer this year.

**42** **MEATLOAF D11**  
 1/28/2016 ALC:D11  
 3165339 [1/8 SM / 7/8 AR]

BECKTON NEBULA P P707  
**HXC MEATLOAF 0002X**  
 HXC ZIMA 338N  
 BROWN COMMITMENT S7206  
**MS COMMT A374**  
 MS BEEFMAKER X003

Individual Data									
act. BW	87								
WW ratio	94								
YW ratio	96								
SC	LARGE-								
Frame	LARGE-								

F:G ratio 84												
Trait Ratio EPD / %												
API: 138 / 25%					TI: 76.8 / 20%					ADG	0.19	
CED	BW	WW	YW	MLK	ME	HPG	CEM	STY	MARB	105	0.81	2%
12.8	-1.4	64	94.4	17.8	49.8			14.6	REA	95	0.04	99%
35%	20%	40%	50%	80%	60%	%	%	10%	CW	23.8	60%	
RA50K										AoD	2016	
										dMPPA		
										YG	0.02	99%

Attractive, high marbling son of Meatloaf that combines some Red Angus and Simmental's most influential sires: P707, Beef Maker, Shear Force and the #1 proven Marbling sire, Commitment.



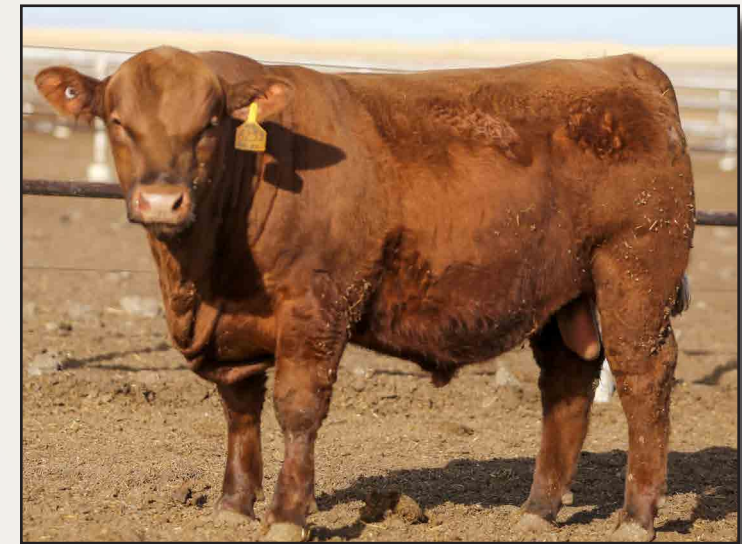
**Lot 42 - MEATLOAF D11**

**43** **WTY YG 223 6233**  
 2/21/16 WTY:6233  
 3547273 [74.6% / 3]

LSF YIELD GRADE 0066X  
**WFL YIELD GRADE 223A**  
 WFL DIRECT DESIGN 8058  
 WS BEEF KING W107  
**WTY BEEFKING 142Y**  
 WTY LELAND VACATION C654

Individual Data									
act. BW	95								
WW ratio	107								
YW ratio	110								
SC	38.18								
Frame	MOD+								

F:G ratio 105												
Trait Ratio EPD / %												
HerdBuilder: 115 / 26%					GridMaster: 51 / 22%					ADG	113	0.25
CED	BW	WW	YW	MLK	ME	HPG	CEM	STY	MARB	96	0.53	29%
3	1.4	79	119	18	3	12	4	11	REA	102	0.62	2%
67%	91%	3%	5%	76%	71%	25%	49%	27%	CW	42	4%	
AoD 5										dMPPA	107.3	
										YG	-0.11	10%



**Lot 43 - WTY YG 223 6233**

**44** **MR BIG IRON D04**  
 1/23/16 ALC:D04  
 3185775 [25% SM / 75% AR]

BECKTON NEBULA P P707  
**HXC BIG IRON 0024X**  
 HXC 825U  
 HXC MAGNUM 4464P  
**MS MAGNUN Y105**  
 MS 600U W907

Individual Data									
act. BW	91								
WW ratio	100								
YW ratio	100								
SC	MOD								
Frame	MOD								

F:G ratio 92												
Trait Ratio EPD / %												
API: 131 / 35%					TI: 77 / 20%					ADG	0.26	
CED	BW	WW	YW	MLK	ME	HPG	CEM	STY	MARB	100	0.66	10%
	-1.0	66	107	14			5	12	REA	100	0.16	99%
	25%	30%	25%	95%			75%	20%	CW	32	30%	
RA50K										AoD	5	
										YG	-0.01	95%



**Lot 44 - D04**

**45****BEEFKING D56**2/4/16 ALC:D56  
3165340 [62.5% SM / 37.5% AR]

Individual Data	
act. BW	90
WW ratio	106
YW ratio	104
SC	
Frame	MOD

<b>F:G ratio</b>	<b>91</b>
------------------	-----------

Trait	Ratio	EPD / %
ADG		0.26
MARB	94	0.38 45%
REA	105	0.90 15%
CW	35.8	45%
YG	-0.30	35%

WS BEEF MAKER R13  
**WS BEEF KING W107**  
WS MISS DREAMBOAT T17  
SCHULER ENVY 7342T  
**MS ENVY X052**  
MS LANCER R524

API: 134 / 30%				TI: 77 / 15%				
CED	BW	WW	YW	MLK	ME	HPG	CEM	STY
11.5	1.5	78	109	15	54.1		10	12
45	70%	5%	20%	90%	35		25%	20%
<b>RA50K</b>					AoD 6			

**Lot 45 - BEEFKING D56****Wedel Char x Red Angus Hybrids**

Our Char x Red Angus composites have really gained popularity over the last 2-3 years. These bulls range from 3/4 to 7/8 Red Angus – so they will improve gain, conversion, yield grade and carcass weight without increasing cow size. We select them to be moderate, thick, easy fleshing and docile. – and profitable in the feedyard.

**46****WFL YG 223A 6214**2/19/16 WFL:6214  
3546885 [73.4% / 3]

Individual Data	
act. BW	74
WW ratio	108
YW ratio	102
SC	40.62
Frame	MOD

<b>F:G ratio</b>	<b>101</b>
------------------	------------

Trait	Ratio	EPD / %
ADG	95	0.17
MARB	112	0.72 10%
REA	100	0.31 19%
CW	18	57%
YG	-0.03	34%

LSF YIELD GRADE 0066X  
**WFL YIELD GRADE 223A**  
WFL DIRECT DESIGN 8058  
REMINGTON RED LABEL HR  
**WFL REMINGTON C743**  
WFL 9895-C227

HerdBuilder: 109 / 33%				GridMaster: 51 / 20%				
CED	BW	WW	YW	MLK	ME	HPG	CEM	STY
7	-3.0	63	90	19	-1	11	5	10
32%	22%	31%	47%	64%	32%	45%	44%	51%
					AoD 9		dMPPA 100.8	

**47****WFL 085B 6054**1/20/16 WFL:6054  
3547187 [85.7% / 3]

Individual Data	
act. BW	73
WW ratio	103
YW ratio	104
SC	38.64
Frame	MOD

<b>F:G ratio</b>	<b>112</b>
------------------	------------

Trait	Ratio	EPD / %
ADG	106	0.23
MARB	123	0.81 6%
REA	99	0.39 12%
CW	27	29%
YG	-0.03	35%

WFL NEBULA 707 165Z  
**WFL 165Z 085B**  
WFL BEEFMAKER 116Z  
LELAND RED DIRECTION 253X  
**WFL DIRECTOR 295B**  
WFL LILLIE 5320

HerdBuilder: 106 / 37%				GridMaster: 53 / 4%				
CED	BW	WW	YW	MLK	ME	HPG	CEM	STY
7	-2.8	66	103	22	0	13	7	8
27%	24%	23%	21%	37%	45%	22%	17%	79%
					AoD 2		dMPPA 101.2	

We begin a run of three half-brothers by 85B – the high selling bull in our 2015 sale going to Otley Bros. Diamond, OR. These bulls have strong top with loads of muscle and gain. Turn out all three uniform and highly efficient calf crop.

**50****WFL YG 223A 6153**2/13/16 WFL:6153  
3547046 [74.3% / 3]

Individual Data	
act. BW	77
WW ratio	99
YW ratio	100
SC	39.42
Frame	MOD

<b>F:G ratio</b>	<b>108</b>
------------------	------------

Trait	Ratio	EPD / %
ADG	103	0.22
MARB	81	0.43 45%
REA	105	0.58 3%
CW	30	22%
YG	-0.13	8%

LSF YIELD GRADE 0066X  
**WFL YIELD GRADE 223A**  
WFL DIRECT DESIGN 8058  
SCHURRTOP HCR RANCHER  
**WFL RANCHER 162Y**  
WFL CHERRY C608

HerdBuilder: 114 / 27%				GridMaster: 50 / 25%				
CED	BW	WW	YW	MLK	ME	HPG	CEM	STY
7	-0.8	68	103	19	0	12	3	11
33%	59%	18%	21%	64%	46%	27%	74%	33%
					AoD 5		dMPPA 99.3	

A deep ribbed wide based solid red bull with plenty of middle yet no larger framed than many of our Red Angus bulls. With best 8% Yield grade and 8% better feed efficiency his steers will be really fun to feed.

**51****WFL 165Z 6148**2/13/16 WFL:6148  
3547112 [84.1% / 3]

Individual Data	
act. BW	95
WW ratio	113
YW ratio	111
SC	41.42
Frame	LARGE-

<b>F:G ratio</b>	<b>103</b>
------------------	------------

Trait	Ratio	EPD / %
ADG	109	0.23
MARB	118	0.81 5%
REA	103	0.12 47%
CW	35	11%
YG	0.15	95%

BECKTON NEBULA P P707  
**WFL NEBULA 707 165Z**  
WFL JULIAN 4179  
WFL COMMITMENT 025Y  
**WFL PRAIRIE FIRE 106A**  
WFL PRAIRIE FIRE RED 05

HerdBuilder: 149 / 6%				GridMaster: 51 / 19%				
CED	BW	WW	YW	MLK	ME	HPG	CEM	STY
9	-0.2	74	111	23	-3	12	5	14
18%	70%	7%	11%	34%	23%	35%	34%	5%
					AoD 3		dMPPA 106.9	

Here's a 3/16 Char hybrid that will out marble 95% of the 1A Red Angus population and comes with a 9 CED to 111 YW spread.

**48****WFL 085B 6084**1/30/16 WFL:6084  
3547154 [74.3% / 3]

Individual Data	
act. BW	62
WW ratio	
YW ratio	
SC	35.47
Frame	MOD

<b>F:G ratio</b>	<b>109</b>
------------------	------------

Trait	Ratio	EPD / %
ADG		0.16
MARB	0	0.55 26%
REA	0	0.40 12%
CW	11	78%
YG	-0.16	6%

WFL NEBULA 707 165Z  
**WFL 165Z 085B**  
WFL BEEFMAKER 116Z  
LELAND BEEF MAKER 197X  
**WFL MS 310A**  
WFL MAJOR LEAGUE C745

HerdBuilder: 128 / 15%				GridMaster: 51 / 14%				
CED	BW	WW	YW	MLK	ME	HPG	CEM	STY
10	-5.2	56	82	24	1	13	6	11
14%	4%	57%	64%	24%	55%	20%	29%	31%
					AoD 3		dMPPA 102.3	

**49****WFL 085B 6209**2/18/16 WFL:6209  
3547182 [74.4% / 3]

Individual Data	
act. BW	67
WW ratio	104
YW ratio	108
SC	38.58
Frame	MOD

<b>F:G ratio</b>	<b>126</b>
------------------	------------

Trait	Ratio	EPD / %
ADG	113	0.24
MARB	90	0.53 28%
REA	109	0.73 1%
CW	25	35%
YG	-0.21	4%

WFL NEBULA 707 165Z  
**WFL 165Z 085B**  
WFL BEEFMAKER 116Z  
LJC MERLIN T179  
**WFL MERLIN 043B**  
WFL SIMANGUS 175Z

HerdBuilder: 127 / 16%				GridMaster: 53 / 2%				
CED	BW	WW	YW	MLK	ME	HPG	CEM	STY
12	-5.4	68	107	24	0	13	4	10
6%	4%	17%	16%	25%	48%	17%	50%	57%
					AoD 2		dMPPA 101.6	

Another candidate for best SimAngus in the sale, 6209 is thick and powerfully frame without adding frame or birthweight. And, he was 26% more efficient than his contemporaries.

**52****WFL REBEL 6121**2/14/16 WFL:6121  
3547132 [74.7% / 3]

Individual Data	
act. BW	102
WW ratio	124
YW ratio	120
SC	40.45
Frame	MOD+

<b>F:G ratio</b>	<b>94</b>
------------------	-----------

Trait	Ratio	EPD / %
ADG	117	0.29
MARB	100	0.57 22%
REA	116	0.36 14%
CW	45	2%
YG	0.08	80%

BECKTON NEBULA P P707  
**SCHULER REBEL 0029X**  
SOR RUTH RMR 5055R  
HPR TRUE BLUE 0525  
**WFL BLU 325A**  
WFL JULIAN N008 C776

HerdBuilder: 125 / 17%				GridMaster: 51 / 12%				
CED	BW	WW	YW	MLK	ME	HPG	CEM	STY
7	0.2	79	126	30	-4	8	5	12
27%	77%	3%	2%	2%	15%	93%	30%	21%
					AoD 3		dMPPA 113.7	

When pounds matter turn to this solid red 1/4 Char hybrid – he is a powerhouse. A cow bull sure enough but himself born unassisted out of a second-calver – check out his elite ranks for growth, post-weaning gain, ribeye area and carcass weight.

**Lot 52 - WFL REBEL 6121**



**Lot 54 - WFL DYNASTY 6275**

**54** **WFL DYNASTY 6275**  
 2/28/16 WFL:6275  
 3547113 [84.1% / 3]

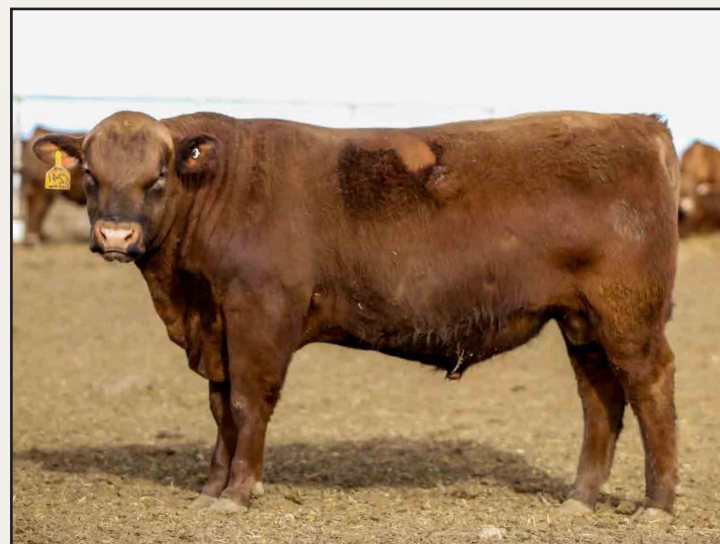
SCHULER ENDURANCE 2101Z  
**SCHULER DYNASTY 4803B**  
 SOR RUFX ENVY 2633Z  
 WFL COMMITMENT 025Y  
**WFL PRAIRIE FIRE 028A**  
 WFL PRAIRIE FIRE RED 07

Individual Data								
act. BW	93							
WW ratio	123							
YW ratio	122							
SC	40.91							
Frame	MOD+							

F:G ratio		112	
Trait	Ratio	EPD / %	
ADG	121	0.23	
MARB	88	0.54	26%
REA	124	0.46	8%
CW	34	13%	
YG	0.03	63%	

HerdBuilder: 95 / 51%				GridMaster: 49 / 42%				
CED	BW	WW	YW	MLK	ME	HPG	CEM	STY
3	1.1	70	106	27	-1	10	4	10
69%	89%	14%	18%	8%	34%	56%	62%	44%
AoD 3				dMPPA 105.7				

A dark red son of Dynasty, a herd sire we purchased as the leadoff bull in the 2015 Schuler Red Angus sale. This 3/16 Char hybrid is out of a 105.7 MPPA daughter of #1 marbling sire, Commitment, and was the most efficient of all the Char x Red Angus hybrids.



**Lot 55 - WFL 165Z 6241**

**53** **WFL REBEL A759 6375**  
 3/10/16 WFL:6375  
 3546949 [85.6% / 3]

SCHULER REBEL 0029X  
**SCHULER REBEL A759**  
 SOR BRASKA LAN T899  
 LJC PAWNEE CANYON S318  
**WFL PAWNEE 9138**  
 WFL SIMANGUS C670

Individual Data	
act. BW	83
WW ratio	113
YW ratio	107
SC	35.26
Frame	MOD

F:G ratio		107	
Trait	Ratio	EPD / %	
ADG	101	0.23	
MARB	92	0.40	52%
REA	107	0.31	18%
CW	41	5%	
YG	0.05	69%	

HerdBuilder: 106 / 37%				GridMaster: 49 / 48%				
CED	BW	WW	YW	MLK	ME	HPG	CEM	STY
6	1.1	80	117	21	4	5	2	12
39%	88%	2%	6%	51%	84%	99%	85%	17%
AoD 7				dMPPA 110.4				

**57** **WFL REBEL A759 6289**  
 3/1/16 WFL:6289  
 3547004 [74.1% / 3]

SCHULER REBEL 0029X  
**SCHULER REBEL A759**  
 SOR BRASKA LAN T899  
 MULT SIRE  
**WFL PRAIRIE FIRE RED 40**  
 NON-REGISTERED DAM

Individual Data	
act. BW	96
WW ratio	105
YW ratio	103
SC	33.97
Frame	MOD

F:G ratio		104	
Trait	Ratio	EPD / %	
ADG	100	0.26	
MARB	67	-0.05	99%
REA	112	0.46	8%
CW	43	3%	
YG	-0.06	21%	

HerdBuilder: 85 / 66%				GridMaster: 47 / 81%				
CED	BW	WW	YW	MLK	ME	HPG	CEM	STY
3	3.2	74	116	13	-7	7	3	10
69%	99%	8%	7%	94%	6%	96%	67%	47%
AoD 6				dMPPA 96.2				



**Lot 57 - WFL REBEL A759 6289**

**55** **WFL 165Z 6241**  
 2/21/16 WFL:6241  
 3547022 [74.5% / 3]

BECKTON NEBULA P P707  
**WFL NEBULA 707 165Z**  
 WFL JULIAN 4179  
 HCR EXTRA EDGE 6011 PLD  
**WFL PRAIRIE FIRE RED 077Y**  
 WFL LILLIE 5292

Individual Data	
act. BW	82
WW ratio	109
YW ratio	103
SC	40.68
Frame	MOD

F:G ratio		87	
Trait	Ratio	EPD / %	
ADG	97	0.18	
MARB	90	0.33	70%
REA	100	0.20	32%
CW	18	58%	
YG	0.04	67%	

HerdBuilder: 134 / 12%				GridMaster: 49 / 46%				
CED	BW	WW	YW	MLK	ME	HPG	CEM	STY
12	-3.8	63	91	27	-4	12	6	12
5%	13%	31%	45%	8%	16%	28%	21%	22%
AoD 5				dMPPA 108.0				

**58** **WFL YG 223A 6188**  
 2/17/16 WFL:6188  
 3547025 [73.8% / 3]

LSF YIELD GRADE 0066X  
**WFL YIELD GRADE 223A**  
 WFL DIRECT DESIGN 8058  
 SCHURRTOP HCR RANCHER  
**WFL PRAIRIE FIRE RED 127Y**  
 WFL CHEROKEE 5342

Individual Data	
act. BW	83
WW ratio	98
YW ratio	96
SC	39.05
Frame	

F:G ratio		94	
Trait	Ratio	EPD / %	
ADG	93	0.19	
MARB	101	0.65	14%
REA	95	0.37	13%
CW	27	31%	
YG	-0.11	10%	

HerdBuilder: 106 / 36%				GridMaster: 50 / 28%				
CED	BW	WW	YW	MLK	ME	HPG	CEM	STY
5	0.3	64	95	17	0	11	0	12
50%	78%	30%	36%	79%	40%	50%	96%	22%
AoD 5				dMPPA 96.4				



**Lot 58 - WFL YG 223A 6188**

**56** **WFL REBEL 6096**  
 2/3/16 WFL:6096  
 3547144 [74.4% / 3]

BECKTON NEBULA P P707  
**SCHULER REBEL 0029X**  
 SOR RUTH RMR 5055R  
 HPR TRUE BLUE 0525  
**WFL BLU 265A**  
 WFL LARRY 9163

Individual Data	
act. BW	73
WW ratio	100
YW ratio	102
SC	39.6
Frame	MOD+

F:G ratio		110	
Trait	Ratio	EPD / %	
ADG	104	0.22	
MARB	95	0.58	21%
REA	103	0.16	39%
CW	16	64%	
YG	-0.02	38%	

HerdBuilder: 118 / 23%				GridMaster: 52 / 9%				
CED	BW	WW	YW	MLK	ME	HPG	CEM	STY
11	-4.9	54	89	30	-4	7	5	11
8%	6%	62%	48%	2%	15%	96%	41%	37%
AoD 3				dMPPA 99.4				

A big scrotal Buckskin son of Rebel with exceptional calving ease and feed efficiency of 10% better conversion.

**59** **WFL 165Z 6126**  
 2/11/16 WFL:6126  
 3547118 [87.5% / 2]

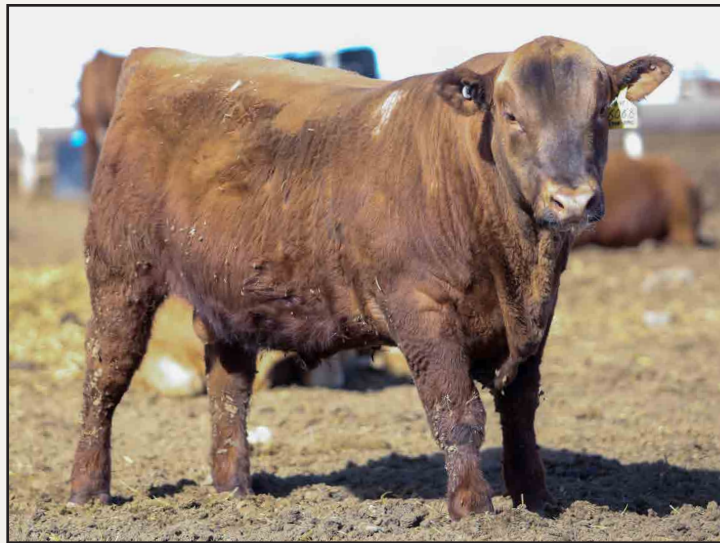
BECKTON NEBULA P P707  
**WFL NEBULA 707 165Z**  
 WFL JULIAN 4179  
 RJRA PAWNEE CANYON 8167  
**WFL PRAIRIE FIRE 249A**  
 WFL PRAIRIE FIRE RED 37

Individual Data	
act. BW	98
WW ratio	117
YW ratio	111
SC	41.36
Frame	MOD+

F:G ratio		103	
Trait	Ratio	EPD / %	
ADG	105	0.24	
MARB	110	0.56	24%
REA	107	0.22	30%
CW	37	9%	
YG	0.06	73%	

HerdBuilder: 144 / 7%				GridMaster: 51 / 22%				
CED	BW	WW	YW	MLK	ME	HPG	CEM	STY
9	-0.5	76	115	18	-4	13	6	13
17%	66%	5%	8%	72%	16%	23%	29%	9%
AoD 3				dMPPA 103.4				





**Lot 61 - WFL 8127 6068**

**60 WFL YG 223A 6076**  
1/25/16 WFL:6076  
3547235 [96.9% / B]

LSF YIELD GRADE 0066X  
**WFL YIELD GRADE 223A**  
WFL DIRECT DESIGN 8058

LJC MERLIN T179  
**WFL MERLIN 196B**  
WFL ENVY 9004

Individual Data	
act. BW	68
WW ratio	95
YW ratio	105
SC	36.81
Frame	MOD

**F:G ratio 111**

HerdBuilder: 142 / 8%		GridMaster: 53 / 4%										
CED	BW	WW	YW	MLK	ME	HPG	CEM	STY	MARB	113	0.73	9%
9	-3.1	65	109	21	7	14	3	13	REA	87	0.09	55%
16%	20%	26%	14%	50%	94%	12%	67%	12%	CW	30	21%	
				AoD 2	dMPPA 98.0	YG	0.07	79%				

We start back on the Red Angus bulls with a fast gaining, high marbling Yield Grade x Merlin bred bull who was 11% more efficient and comes with single digit ranks for HerdBuilder and GridMaster.

**65 WFL DOMAIN 6042**  
1/19/16 WFL:6042  
3547221 [100.0% / A]

BECKTON DOMINOR T122 Z1  
**3SCC DOMAIN A163**  
3SCC EUCLA X723

WFL NEBULA 707 165Z  
**WFL NEBULA 165Z 235B**  
WFL RIM VIEW 8189

Individual Data	
act. BW	65
WW ratio	82
YW ratio	97
SC	33.61
Frame	MOD-

**F:G ratio 115**

HerdBuilder: 191 / 1%		GridMaster: 54 / 1%										
CED	BW	WW	YW	MLK	ME	HPG	CEM	STY	MARB	133	1.10	1%
14	-4.9	51	88	27	0	17	9	16	REA	86	0.03	68%
2%	5%	74%	51%	9%	46%	1%	3%	2%	CW	16	65%	
				AoD 2	dMPPA 92.8	YG	0.07	77%				

Pay attention through the sale order, or you'll miss bulls like this top 1% GridMaster top 1% HerdBuilder. This was one of the highest bulls in the entire sale at a 133 IMF ratio and was also 15% more efficient in feed conversion.

**66 WFL DEFENDER 6217**  
2/19/16 WFL:6217  
3546952 [93.8% / B]

5L ADVOCATE 817-14W  
**5L DEFENDER 560-30Z**  
5L BLACK ADINA 525-560

SCHULER ENVY 7342T  
**WFL ENVY 9004**  
WFL FLAT IRON 7061

Individual Data	
act. BW	79
WW ratio	100
YW ratio	97
SC	37.62
Frame	MOD

**F:G ratio 103**

HerdBuilder: 124 / 18%		GridMaster: 53 / 4%										
CED	BW	WW	YW	MLK	ME	HPG	CEM	STY	MARB	110	0.80	6%
11	-3.3	58	94	24	3	12	7	10	REA	109	0.58	3%
10%	18%	50%	40%	24%	72%	31%	13%	54%	CW	21	49%	
				AoD 7	dMPPA 101.6	YG	-0.13	8%				

Really nice heifer bull in this Defender son who comes with single digit breed ranks for Marbling, REA, Yield Grade and GridMaster Index.

**61 WFL 8127 6068**  
1/23/16 WFL:6068  
3547169 [100% / A]

LJC PAWNEE CANYON S318  
**WFL PAWNEE CANYON 8127**  
WFL JULIAN 4179

BECKTON EPIC R397 K  
**WFL EPIC 234B**  
TJR 4912 K37 M11

Individual Data	
act. BW	67
WW ratio	91
YW ratio	90
SC	32.74
Frame	MOD-

**F:G ratio 96**

HerdBuilder: 131 / 13%		GridMaster: 50 / 34%										
CED	BW	WW	YW	MLK	ME	HPG	CEM	STY	MARB	82	0.43	47%
9	-3.9	54	82	20	-2	14	1	13	REA	83	0.19	34%
17%	13%	64%	62%	60%	29%	10%	91%	12%	CW	13	71%	
				AoD 2	dMPPA 96.4	YG	-0.02	39%				

**62 WFL 8127 6045**  
1/19/16 WFL:6045  
3547191 [100% / A]

LJC PAWNEE CANYON S318  
**WFL PAWNEE CANYON 8127**  
WFL JULIAN 4179

LSF RAB SOVEREIGN X7780  
**WFL SOVEREIGN 278B**  
WFL LANCER 4146 C887

Individual Data	
act. BW	57
WW ratio	105
YW ratio	103
SC	31.61
Frame	MOD

**F:G ratio 101**

HerdBuilder: 151 / 5%		GridMaster: 53 / 3%										
CED	BW	WW	YW	MLK	ME	HPG	CEM	STY	MARB	96	0.59	21%
11	-4.9	65	105	17	1	14	5	13	REA	106	0.29	20%
8%	5%	26%	19%	78%	58%	13%	42%	12%	CW	25	36%	
				AoD 2	dMPPA 102.0	YG	-0.05	24%				

**67 WFL DOMAIN 6073**  
1/24/16 WFL:6073  
3547184 [99.7% / B]

BECKTON DOMINOR T122 Z1  
**3SCC DOMAIN A163**  
3SCC EUCLA X723

KOESTER CHIVAS 005  
**WFL CHIVAS 153B**  
WFL MERLIN 054Z

Individual Data	
act. BW	62
WW ratio	104
YW ratio	104
SC	31.27
Frame	MOD-

**F:G ratio 103**

HerdBuilder: 164 / 3%		GridMaster: 52 / 6%										
CED	BW	WW	YW	MLK	ME	HPG	CEM	STY	MARB	97	0.68	12%
10	-3.9	65	107	25	3	16	5	15	REA	98	0.32	18%
14%	12%	25%	16%	20%	71%	3%	33%	4%	CW	28	28%	
				AoD 2	dMPPA 101.6	YG	0.12	90%				

**68 WFL DEFENDER 6165**  
2/15/16 WFL:6165  
3546940 [99.6% / B]

5L ADVOCATE 817-14W  
**5L DEFENDER 560-30Z**  
5L BLACK ADINA 525-560

LJC MERLIN T179  
**WFL MERLIN 9240**  
WFL VACATION 5218

Individual Data	
act. BW	82
WW ratio	104
YW ratio	102
SC	33.99
Frame	MOD

**F:G ratio 93**

HerdBuilder: 139 / 9%		GridMaster: 54 / 1%										
CED	BW	WW	YW	MLK	ME	HPG	CEM	STY	MARB	115	0.92	3%
10	-3.2	65	104	20	2	13	5	12	REA	103	0.54	4%
14%	20%	26%	20%	61%	61%	17%	35%	24%	CW	27	29%	
				AoD 7	dMPPA 103.2	YG	-0.08	15%				

**63 WFL FRANKLY 6065**  
1/23/16 WFL:6065  
3547217 [98.8% / B]

LJC MERLIN T179  
**WFL MERLIN 018A**  
WFL COMMITMENT 042Y

WFL NEBULA 707 165Z  
**WFL NEBULA 165Z 192B**  
WFL CHEROKEE 5342

Individual Data	
act. BW	66
WW ratio	107
YW ratio	108
SC	39.74
Frame	MOD

**F:G ratio 92**

HerdBuilder: 139 / 9%		GridMaster: 53 / 2%										
CED	BW	WW	YW	MLK	ME	HPG	CEM	STY	MARB	102	0.74	9%
9	-3.8	79	122	19	2	11	-1	13	REA	116	0.51	5%
17%	13%	3%	4%	68%	64%	43%	97%	9%	CW	36	10%	
				AoD 2	dMPPA 102.8	YG	0.00	46%				

**64 WFL DOMAIN 6006**  
1/13/16 WFL:6006  
3547175 [99.9% / B]

BECKTON DOMINOR T122 Z1  
**3SCC DOMAIN A163**  
3SCC EUCLA X723

LJC MERLIN T179  
**WFL MERLIN 017B**  
WFL NEXT 091Z

Individual Data	
act. BW	52
WW ratio	95
YW ratio	95
SC	35.42
Frame	MOD-

**F:G ratio 96**

HerdBuilder: 171 / 2%		GridMaster: 52 / 7%										
CED	BW	WW	YW	MLK	ME	HPG	CEM	STY	MARB	111	0.79	6%
12	-5.0	53	85	27	3	16	5	15	REA	94	0.32	18%
5%	5%	67%	58%	9%	70%	2%	30%	3%	CW	13	72%	
				AoD 2	dMPPA 98.0	YG	0.03	60%				

**69 WFL YG 223A 6029**  
1/17/16 WFL:6029  
3547230 [99.7% / B]

LSF YIELD GRADE 0066X  
**WFL YIELD GRADE 223A**  
WFL DIRECT DESIGN 8058

LSF PROSPECT 2035Z  
**WFL PROSPECT 229B**  
WFL MISSION 9127

Individual Data	
act. BW	63
WW ratio	105
YW ratio	98
SC	30.55
Frame	MOD-

**F:G ratio 85**

HerdBuilder: 129 / 15%		GridMaster: 51 / 15%										
CED	BW	WW	YW	MLK	ME	HPG	CEM	STY	MARB	91	0.60	20%
9	-3.5	62	93	22	5	15	2	12	REA	94	0.29	20%
15%	16%	35%	42%	44%	86%	7%	79%	23%	CW	20	53%	
				AoD 2	dMPPA 102.0	YG	-0.08	17%				

**70 WFL YG 223A 6168**  
2/15/16 WFL:6168  
3546926 [100% / A]

LSF YIELD GRADE 0066X  
**WFL YIELD GRADE 223A**  
WFL DIRECT DESIGN 8058

LJC MERLIN T179  
**WFL MERLIN 9228**  
MRM 4912 K39 M04

Individual Data	
act. BW	70
WW ratio	97
YW ratio	97
SC	34.99
Frame	MOD

**F:G ratio 97**

HerdBuilder: 150 / 6%		GridMaster: 51 / 21%										
CED	BW	WW	YW	MLK	ME	HPG	CEM	STY	MARB	101	0.53	29%
9	-3.6	59	88	18	4	15	1	15	REA	90	0.22	30%
20%	15%	47%	50%	71%	77%	7%	90%	3%	CW	17	61%	
				AoD 7	dMPPA 97.6	YG	-0.07	18%				

**WFL ALL AROUND 6387**3/11/16 WFL:6387  
3547237 [99.9% / B]

Individual Data		
act. BW		75
WW ratio		96
YW ratio		114
SC		35.3
Frame		MOD-

BECKTON DOMINOR T122 Z1

**3SCC DOMAIN A163**

3SCC EUCLA X723

SCHULER NEBULA P707 0050X

**WFL NEBULA 050X123B**

WFL UTAH 0293

HerdBuilder: 167 / 2%										GridMaster: 52 / 5%		
CED	BW	WW	YW	MLK	ME	HPG	CEM	STY		ADG	Ratio	EPD / %
7	-1.5	67	115	25	-4	14	7	15		MARB	116	0.67 13%
30%	47%	21%	7%	15%	18%	10%	16%	2%		REA	114	0.37 13%
										CW	37	9%
										YG	0.08	80%
										AoD	2	dMPPA 98.4

Want it all – gain, grade, muscle, and efficiency? Check out his ratios for those traits then make sure you own 6387 on the night of March 14th. What's better - he's just as good for cow herd traits – better than 20% percentile for low maintenance, heifer pregnancy, maternal calving ease and stayability.

**WFL DEFENDER 6255**2/24/16 WFL:6255  
3546920 [100% / A]

Individual Data		
act. BW		85
WW ratio		92
YW ratio		98
SC		37.28
Frame		MOD

5L ADVOCATE 817-14W

**5L DEFENDER 560-30Z**

5L BLACK ADINA 525-560

SCHULER ENVY 7342T

**WFL ENVY 913Z**

RX ROBETTA 9933

HerdBuilder: 107 / 35%										GridMaster: 53 / 3%		
CED	BW	WW	YW	MLK	ME	HPG	CEM	STY		ADG	Ratio	EPD / %
4	-0.6	56	91	25	3	14	4	10		MARB	163	1.28 1%
54%	64%	59%	46%	16%	75%	11%	52%	54%		REA	98	0.50 7%
										CW	23	41%
										YG	-0.02	38%
										AoD	7	dMPPA 105.6

**WFL DEFENDER 6261**2/25/16 WFL:6261  
3546910 [100% / A]

Individual Data		
act. BW		81
WW ratio		97
YW ratio		98
SC		38.81
Frame		MOD

5L ADVOCATE 817-14W

**5L DEFENDER 560-30Z**

5L BLACK ADINA 525-560

LCC CHEYENNE B221L

**WFL CHEYENNE 8053**

SANTIAM'S LANA R09

HerdBuilder: 121 / 20%										GridMaster: 53 / 3%		
CED	BW	WW	YW	MLK	ME	HPG	CEM	STY		ADG	Ratio	EPD / %
6	-2.6	60	96	25	4	14	5	11		MARB	129	1.03 1%
39%	28%	44%	35%	17%	77%	8%	39%	40%		REA	99	0.24 27%
										CW	24	41%
										YG	0.00	45%
										AoD	8	dMPPA 101.7

If you like marketing on a value-based grid, consider this Yield Grade son – he has the highest IMF ratio in the sale also ranks in the top 1% for Marbling.

**WFL DOMAIN 6056**1/21/16 WFL:6056  
3547218 [100% / A]

Individual Data		
act. BW		61
WW ratio		92
YW ratio		94
SC		34.68
Frame		MOD-

BECKTON DOMINOR T122 Z1

**3SCC DOMAIN A163**

3SCC EUCLA X723

SCHULER NEBULA P707 0050X

**WFL 0050X 224B**

LORENZEN S6143

HerdBuilder: 151 / 5%										GridMaster: 50 / 36%		
CED	BW	WW	YW	MLK	ME	HPG	CEM	STY		ADG	Ratio	EPD / %
7	-3.5	50	78	29	2	14	4	15		MARB	105	0.56 24%
28%	16%	75%	70%	3%	59%	10%	50%	3%		REA	84	-0.02 78%
										CW	12	76%
										YG	0.07	79%
										AoD	2	dMPPA 96.8

**WFL DEFENDER 6281**2/28/16 WFL:6281  
3546936 [100% / A]

Individual Data		
act. BW		97
WW ratio		91
YW ratio		94
SC		35.91
Frame		MOD+

5L ADVOCATE 817-14W

**5L DEFENDER 560-30Z**

5L BLACK ADINA 525-560

LJC MERLIN T179

**WFL MERLIN 9161**

WFL BRIDGER 4095

HerdBuilder: 120 / 21%										GridMaster: 51 / 16%		
CED	BW	WW	YW	MLK	ME	HPG	CEM	STY		ADG	Ratio	EPD / %
5	-0.9	60	94	19	7	14	5	12		MARB	100	0.77 7%
44%	57%	41%	39%	64%	97%	12%	39%	25%		REA	92	0.25 25%
										CW	24	38%
										YG	-0.05	27%
										AoD	7	dMPPA 103.2

**WFL YG 223A 6136**2/11/16 WFL:6136  
3547206 [99.5% / B]

Individual Data		
act. BW		78
WW ratio		107
YW ratio		101
SC		37.86
Frame		MOD

LSF YIELD GRADE 0066X

**WFL YIELD GRADE 223A**

WFL DIRECT DESIGN 8058

KOESTER CHIVAS 005

**WFL CHIVAS 011B**

WFL NORSEMAN 134Z

HerdBuilder: 111 / 31%										GridMaster: 52 / 9%		
CED	BW	WW	YW	MLK	ME	HPG	CEM	STY		ADG	Ratio	EPD / %
4	-1.7	61	92	21	5	15	0	11		MARB	143	1.04 1%
61%	42%	38%	43%	53%	88%	4%	96%	28%		REA	90	0.06 60%
										CW	22	46%
										YG	0.03	63%
										AoD	2	dMPPA 102.8

**WFL REBEL A759 6394**3/13/16 WFL:6394  
3546905 [98.8% / B]

Individual Data		
act. BW		89
WW ratio		98
YW ratio		103
SC		36.36
Frame		MOD-

SCHULER REBEL 0029X

**SCHULER REBEL A759**

SOR BRASKA LAN T899

LELAND RIM 6226S

**WFL RIM VIEW 8145**

WFL LANCER F442 6072

HerdBuilder: 133 / 12%										GridMaster: 50 / 31%		
CED	BW	WW	YW	MLK	ME	HPG	CEM	STY		ADG	Ratio	EPD / %
7	0.4	74	116	18	3	7	6	14		MARB	85	0.41 51%
34%	79%	7%	7%	72%	70%	97%	26%	6%		REA	102	0.32 18%
										CW	39	6%
										YG	0.04	67%
										AoD	8	dMPPA 95.1

**WFL 2758 6313**3/4/16 WFL:6313  
3546970 [99.9% / B]

Individual Data		
act. BW		84
WW ratio		93
YW ratio		96
SC		35.57
Frame		MOD

MESSMER PACKER S008

**LSF RAB EASY CALVER 2758Z**

BROWN MS L806 T7656

SCHULER ENVY 7342T

**WFL ENVY 0010**

WFL CHEYENNE 8045

HerdBuilder: 111 / 31%										GridMaster: 50 / 24%		
CED	BW	WW	YW	MLK	ME	HPG	CEM	STY		ADG	Ratio	EPD / %
4	-2.2	49	75	33	9	11	4	12		MARB	110	0.73 9%
64%	34%	78%	75%	1%	99%	48%	53%	18%		REA	94	0.34 15%
										CW	12	75%
										YG	-0.10	11%
										AoD	6	dMPPA 115.4

**WFL HARD DRIVE 6111**2/7/16 WFL:6111  
3547121 [95.2% / B]

Individual Data		
act. BW		91
WW ratio		105
YW ratio		104
SC		39.23
Frame		MOD+

LACY GOLD BAR 8123

**BIEBER HARD DRIVE Y120**

BIEBER LAURA 158W

WFL MAGIC MERL 039Y

**WFL MAGIC 121A**

WFL COMMITMENT 040Y

HerdBuilder: 126 / 17%										GridMaster: 54 / 1%		
CED	BW	WW	YW	MLK	ME	HPG	CEM	STY		ADG	Ratio	EPD / %
5	-1.2	75	118	19	2	13	3	11		MARB	139	1.03 1%
47%	52%	6%	6%	70%	61%	16%	67%	28%		REA	89	0.32 18%
										CW	38	8%
										YG	-0.02	38%
										AoD	3	dMPPA 96.6

**WFL OMG 6325**3/5/16 WFL:6325  
3547030 [98.0% / B]

Individual Data		
act. BW		62
WW ratio		101
YW ratio		102
SC		36.6
Frame		MOD-

SCHULER OMYGOODNESS 2121Z

**SCHULER OMYGOODNESS 4805B**

SOR ANKIE NB0050X 2607Z

LJC MERLIN T179

**WFL MERLIN 311Y**

WFL JULIAN NOO8 6150

HerdBuilder: 124 / 18%										GridMaster: 51 / 23%		
CED	BW	WW	YW	MLK	ME	HPG	CEM	STY		ADG	Ratio	EPD / %
7	-3.6	59	94	26	4	13	3	12		MARB	103	0.22
27%	15%	45%	39%	14%	79%	18%	67%	21%		REA		0.43 46%
										CW	21	50%
										YG	0.01	53%
										AoD	5	dMPPA 101.5

**WFL 88B 6314**3/4/16 WFL:6314  
3546872 [100% / A]

Individual Data		
act. BW		72
WW ratio		105
YW ratio		106
SC		39.07
Frame		MOD+

5L DEFENDER 560-30Z

**5L DEFENDER 4772-88B**

5L RED GEM 649-4772

GLACIER BRIDGER 212

**WFL BRIDGER 6175**

CEDAR HILL 45M

HerdBuilder: 133 / 12%										GridMaster: 51 / 20%		
CED	BW	WW	YW	MLK	ME	HPG	CEM	STY		ADG	Ratio	EPD / %
6	-2.9	62	97	23	4	14	6	12		MARB	89	0.40 53%
38%	23%	37%	32%	31%	79%	10%	20%	17%		REA	110	0.43 9%
										CW	24	41%
										YG	-0.08	17%
										AoD	10	dMPPA 102.6

Big Ribeye Defender son gained 21% more efficiently than his contemporaries.

**Lot 80 - WFL 88B 6314**

## 82 WFL TOP FLIGHT 6113

2/8/16  
3583004  
WFL:6113  
[50% / 3]

5L ADVANTAGE 3267-221Y  
**5L TOP FLIGHT 3010-491A**  
5L OSCE 2948-3010  
LELAND BEEF MAKER 197X

**WFL MS 315A**  
WFL LANCER BO74 4103

Individual Data												
F:G ratio <b>89</b>												
Trait Ratio EPD / %												
HerdBuilder: 98 / 47%					GridMaster: 48 / 76%							
act. BW	83	WW ratio	102	YW ratio	90	SC	37.26	Frame	MOD-			
ADG	77	0.12	MARB	113	0.46	41%	REA	99	0.49	7%		
CED	4	0.5	66	85	23	2	13	6	10	CW	21	51%
56%	82%	23%	57%	31%	61%	15%	25%	53%	YG	-0.11	10%	
RA50K					AoD 3 dMPPA 100.0							

## 83 WFL 159B 6280

2/28/16  
3547150  
WFL:6280  
[99.5% / B]

5L DEFENDER 560-30Z  
**5L DEFENDER 06Y-159B**  
5L NACOMA 849-06Y  
LJC MERLIN T179

**WFL MERLIN 103A**  
WFL DIRECTOR 0230

Individual Data												
F:G ratio <b>99</b>												
Trait Ratio EPD / %												
HerdBuilder: 115 / 26%					GridMaster: 53 / 2%							
act. BW	77	WW ratio	100	YW ratio	102	SC	37.91	Frame	MOD			
ADG	104	0.24	MARB	136	1.10	1%	REA	95	0.28	21%		
CED	6	-0.8	64	102	20	2	15	3	10	CW	30	23%
41%	58%	28%	23%	62%	62%	6%	63%	51%	YG	-0.04	31%	
AoD 3					dMPPA 98.9							

## 87 ALC MR Y11 D07

1/26/16  
3550072  
ALC:D07  
[100.0% / A]

RED CROWFOOT OLE'S OSCAR  
**ALC MR OSCAR Y11**  
SOR MARLEE BRN CMT 9266W  
HXC MEATLOAF 0002X

**ALC MISS MEATLOAF B457**  
ALC MISS MERLIN Y1123

Individual Data												
F:G ratio <b>100</b>												
Trait Ratio EPD / %												
HerdBuilder: 110 / 32%					GridMaster: 54 / 1%							
act. BW	76	WW ratio		YW ratio		SC	37.81	Frame	MOD			
ADG		0.21	MARB	0	1.43	1%	REA	0	0.01	71%		
CED	5	-2.7	66	99	27	6	8	3	11	CW	24	38%
53%	26%	24%	29%	7%	90%	89%	70%	34%	YG	0.14	94%	
RA50K					AoD 2 dMPPA							



Lot 87 - ALC MR Y11 D07

## 84 WFL REBEL A759 6372

3/10/16  
3546909  
WFL:6372  
[98.3% / B]

SCHULER REBEL 0029X  
**SCHULER REBEL A759**  
SOR BRASKA LAN T899  
WFL ENTERPRISE 6017

**WFL ENTERPRISE 6017 8050**  
WFL BIG CHER C373

Individual Data												
F:G ratio <b>100</b>												
Trait Ratio EPD / %												
HerdBuilder: 120 / 21%					GridMaster: 49 / 48%							
act. BW	84	WW ratio	103	YW ratio	100	SC	34.26	Frame	MOD			
ADG	97	0.22	MARB	74	0.32	72%	REA	109	0.43	10%		
CED	7	-0.6	70	105	20	-1	7	5	12	CW	32	19%
34%	63%	14%	18%	56%	35%	94%	35%	15%	YG	0.04	64%	
AoD 8					dMPPA 98.4							

## 85 WFL EPIC A7540 6277

2/28/16  
3547031  
WFL:6277  
[99.5% / B]

BECKTON EPIC R397 K  
**BROWN EPIC A7540**  
BROWN MS PACKER X7564  
LJC MERLIN T179

**WFL MERLIN 249Y**  
WFL VACATION C738

Individual Data												
F:G ratio <b>107</b>												
Trait Ratio EPD / %												
HerdBuilder: 148 / 6%					GridMaster: 50 / 27%							
act. BW	88	WW ratio	99	YW ratio	98	SC	35.91	Frame	MOD+			
ADG	98	0.24	MARB	92	0.47	39%	REA	96	0.38	13%		
CED	3	0.0	67	106	18	4	15	3	16	CW	33	15%
73%	73%	21%	17%	76%	82%	6%	67%	2%	YG	-0.04	30%	
AoD 5					dMPPA 95.6							

## 88 WFL HARD DRIVE 6117

2/9/16  
3547152  
WFL:6117  
[99.4% / B]

LACY GOLD BAR 8123  
**BIEBER HARD DRIVE Y120**  
BIEBER LAURA 158W  
LSF RAB SOVEREIGN X7780

**WFL SOVEREIGN 150A**  
WFL GRAND 1288 4226

Individual Data												
F:G ratio <b>84</b>												
Trait Ratio EPD / %												
HerdBuilder: 124 / 18%					GridMaster: 50 / 24%							
act. BW	86	WW ratio	106	YW ratio	98	SC	40.79	Frame	MOD			
ADG	87	0.19	MARB	105	0.57	22%	REA	97	0.35	15%		
CED	5	-1.6	68	99	19	-1	12	6	12	CW	26	33%
51%	45%	19%	28%	66%	38%	31%	27%	20%	YG	-0.06	23%	
AoD 3					dMPPA 104.6							

## 89 WFL 165Z 6260

2/25/16  
3546884  
WFL:6260  
[98.4% / B]

BECKTON NEBULA P P707  
**WFL NEBULA 707 165Z**  
WFL JULIAN 4179  
MUSHRUSH JULIAN N008

**WFL JULIAN N008 C795**  
WFL SK 8617

Individual Data												
F:G ratio <b>96</b>												
Trait Ratio EPD / %												
HerdBuilder: 132 / 13%					GridMaster: 48 / 64%							
act. BW	92	WW ratio	104	YW ratio	104	SC	37.31	Frame	MOD			
ADG	104	0.21	MARB	75	0.45	43%	REA	102	-0.05	82%		
CED	9	0.3	68	101	21	2	12	6	13	CW	30	21%
15%	79%	17%	25%	53%	62%	33%	18%	13%	YG	0.16	95%	
AoD 9					dMPPA 101.7							

## 86 WFL PEYTON 6341

3/7/16  
3547091  
WFL:6341  
[99.5% / B]

5L QUARTERBACK 1205-5337  
**LSF SRR PEYTON 3039A**  
SRR FLO-MARIE 961-150  
5L RED DIRECTION 691-6046

**WFL RED D 068Z**  
WFL VACATION C738

Individual Data												
F:G ratio <b>104</b>												
Trait Ratio EPD / %												
HerdBuilder: 109 / 32%					GridMaster: 49 / 43%							
act. BW	84	WW ratio	94	YW ratio	102	SC	36.17	Frame	MOD			
ADG	112	0.25	MARB	95	0.41	50%	REA	93	0.03	66%		
CED	5	-1.0	58	98	23	5	14	10	9	CW	27	30%
46%	55%	49%	31%	29%	89%	13%	1%	61%	YG	0.17	96%	
AoD 4					dMPPA 96.0							



Don't forget about our Commercial Heifers!

selling right after bulls

## 90 WFL HARD DRIVE 6226

2/20/16  
3546882  
WFL:6226  
[99.4% / B]

LACY GOLD BAR 8123  
**BIEBER HARD DRIVE Y120**  
BIEBER LAURA 158W  
LCC CHEYENNE B221L

**WFL CHEYENNE 707I**  
WFL GRAND 1288 4226

Individual Data												
F:G ratio <b>112</b>												
Trait Ratio EPD / %												
HerdBuilder: 121 / 20%					GridMaster: 52 / 5%							
act. BW	84	WW ratio	99	YW ratio	97	SC	37.65	Frame				
ADG	94	0.21	MARB	130	0.91	3%	REA	104	0.48	7%		
CED	5	-2.3	69	102	20	-1	12	5	11	CW	27	31%
49%	33%	14%	24%	54%	36%	35%	32%	32%	YG	-0.07	20%	
AoD 9					dMPPA 97.5							

## 91 WFL DOMAIN 6036

1/18/16  
3547210  
WFL:6036  
[100% / A]

BECKTON DOMINOR T122 Z1  
**3SCC DOMAIN A163**  
3SCC EUCLA X723  
KOESTER CHIVAS 005

**WFL CHIVAS 031B**  
WFL MERLIN 155Z

Individual Data												
F:G ratio <b>92</b>												
Trait Ratio EPD / %												
HerdBuilder: 163 / 3%					GridMaster: 52 / 8%							
act. BW	64	WW ratio	96	YW ratio	95	SC	36.58	Frame	MOD-			
ADG	93	0.19	MARB	130	0.90	3%	REA	86	0.00	72%		
CED	10	-4.6	53	84	26	1	16	6	15	CW	13	71%
14%	7%	66%	59%	12%	57%	3%	18%	4%	YG	0.10	86%	
AoD 2					dMPPA 98.4							

Lots of value in the calves out of this moderate framed Hard Drive son who gained 12% more efficiently and scanned 30% higher IMF. Even better when you consider that's out of a herd with dozens of GridMaster winners.



**Lot 92 - WFL EPIC A7540 6324**

**92** **WFL EPIC A7540 6324**  
 3/5/16 WFL:6324  
 3547015 [99.0% / B]

BECKTON EPIC R397 K  
**BROWN EPIC A7540**  
 BROWN MS PACKER X7564

TR JULIAN LT142  
**WFL LT142 007Y**  
 WFL MISSION 9126

Individual Data	
act. BW	91
WW ratio	100
YW ratio	97
SC	37.1
Frame	MOD

F:G ratio		101
Trait	Ratio	EPD / %
ADG	94	0.21
MARB	111	0.91 3%
REA	89	0.26 24%
CW	27	29%
YG	0.09	85%

HerdBuilder: 150 / 6%				GridMaster: 51 / 17%				
CED	BW	WW	YW	MLK	ME	HPG	CEM	STY
5	-0.6	65	99	23	2	15	6	15
47%	62%	25%	29%	31%	65%	7%	24%	4%
AoD 5				dMPPA 104.4				

**97** **WFL 165Z 6043**  
 1/19/16 WFL:6043  
 3547189 [99.8% / B]

BECKTON NEBULA P P707  
**WFL NEBULA 707 165Z**  
 WFL JULIAN 4179

SCHULER ENVY 7342T  
**WFL MS 296B**  
 WFL LILLIE 6193

Individual Data	
act. BW	78
WW ratio	100
YW ratio	99
SC	36.61
Frame	MOD

F:G ratio		81
Trait	Ratio	EPD / %
ADG	97	0.20
MARB	123	0.94 2%
REA	95	0.06 61%
CW	21	48%
YG	0.11	88%

HerdBuilder: 153 / 5%				GridMaster: 51 / 14%				
CED	BW	WW	YW	MLK	ME	HPG	CEM	STY
10	-1.9	59	91	26	2	14	7	14
12%	40%	48%	45%	14%	59%	14%	10%	7%
AoD 2				dMPPA 100.0				

**98** **WFL Y6 223A 6052**  
 1/20/16 WFL:6052  
 3583006 [50% / 3]

LSF YIELD GRADE 0066X  
**WFL YIELD GRADE 223A**  
 WFL DIRECT DESIGN 8058

LSF NEXTPECTATION 0083X  
**WFL NEXT 064B**  
 WFL FLAT IRON

Individual Data	
act. BW	60
WW ratio	107
YW ratio	107
SC	37.14
Frame	MOD

F:G ratio		99
Trait	Ratio	EPD / %
ADG	106	0.22
MARB	89	0.61 18%
REA	109	0.36 14%
CW	28	28%
YG	-0.04	28%

HerdBuilder: 136 / 11%				GridMaster: 51 / 12%				
CED	BW	WW	YW	MLK	ME	HPG	CEM	STY
8	-2.7	69	104	18	6	16	3	12
23%	27%	15%	19%	73%	91%	3%	65%	16%
AoD 2				dMPPA 100.0				

**93** **WFL DOMAIN 6115**  
 2/8/16 WFL:6115  
 3547258 [99.5% / B]

BECKTON DOMINOR T122 Z1  
**3SCC DOMAIN A163**  
 3SCC EUCLA X723

JJX TONKA 267Z  
**WFL TONKA 275B**  
 WFL LT142 007Y

Individual Data	
act. BW	74
WW ratio	105
YW ratio	99
SC	37.76
Frame	MOD-

F:G ratio		78
Trait	Ratio	EPD / %
ADG	92	0.21
MARB	112	0.84 4%
REA	102	0.11 50%
CW	24	39%
YG	0.06	76%

HerdBuilder: 160 / 3%				GridMaster: 52 / 11%				
CED	BW	WW	YW	MLK	ME	HPG	CEM	STY
10	-2.4	64	97	27	2	14	7	14
14%	30%	29%	32%	10%	59%	8%	14%	5%
AoD 2				dMPPA 102.0				

**94** **WFL DOMAIN 6020**  
 1/16/16 WFL:6020  
 3547231 [99.7% / B]

BECKTON DOMINOR T122 Z1  
**3SCC DOMAIN A163**  
 3SCC EUCLA X723

WFL NEBULA 707 165Z  
**WFL NEBULA 165Z 129B**  
 WFL PAWNEE 9203

Individual Data	
act. BW	64
WW ratio	104
YW ratio	97
SC	37.51
Frame	MOD-

F:G ratio		102
Trait	Ratio	EPD / %
ADG	90	0.20
MARB	98	0.72 9%
REA	91	0.13 45%
CW	17	61%
YG	0.07	79%

HerdBuilder: 178 / 1%				GridMaster: 52 / 10%				
CED	BW	WW	YW	MLK	ME	HPG	CEM	STY
13	-4.5	58	90	25	0	16	7	15
3%	8%	51%	46%	16%	44%	3%	13%	3%
AoD 2				dMPPA 101.6				

**99** **WFL TOP FLIGHT 6172**  
 2/16/16 WFL:6172  
 3546908 [99.3% / B]

5L ADVANTAGE 3267-221Y  
**5L TOP FLIGHT 3010-491A**  
 5L OSCE 2948-3010

LELAND BIG LEAGUE 4310  
**WFL LANCER 4146 8089**  
 WFL 129-C304

Individual Data	
act. BW	74
WW ratio	104
YW ratio	90
SC	35.52
Frame	MOD-

F:G ratio		65
Trait	Ratio	EPD / %
ADG	74	0.11
MARB	117	0.63 16%
REA	87	0.07 57%
CW	8	83%
YG	0.03	59%

HerdBuilder: 115 / 25%				GridMaster: 49 / 46%				
CED	BW	WW	YW	MLK	ME	HPG	CEM	STY
9	-4.0	58	76	23	0	11	7	10
19%	11%	50%	75%	34%	40%	40%	11%	42%
AoD 8				dMPPA 101.7				

**100** **RJRA 159B 6265**  
 2/25/16 RJRA:6265  
 3547292 [100% / A]

5L DEFENDER 560-30Z  
**5L DEFENDER 06Y-159B**  
 5L NACOMA 849-06Y

LJC MERLIN T179  
**RJRA MERLIN 044A**  
 RKRA ENVY 9012

Individual Data	
act. BW	69
WW ratio	99
YW ratio	
SC	
Frame	MOD

F:G ratio		
Trait	Ratio	EPD / %
ADG		0.21
MARB	115	0.88 3%
REA	108	0.59 3%
CW	24	40%
YG	-0.16	6%

HerdBuilder: 125 / 17%				GridMaster: 53 / 3%				
CED	BW	WW	YW	MLK	ME	HPG	CEM	STY
8	-2.4	62	96	21	4	15	2	11
27%	30%	37%	34%	50%	77%	6%	79%	32%
AoD 3				dMPPA 101.7				

You'll want to keep all the daughters of this elite heifer bull – just look at his ranking on heifer pregnancy, maternal calving ease and stay. Born unassisted out of a 2-yr-old dam.

Another strong heifer bull, this one by Top Flight who topped the 2014 Fall 5L sale at \$33,000. His dependable dam – no a 9-year-old - has maintained above average production against the younger competition.

**95** **WFL 165Z 6040**  
 1/18/16 WFL:6040  
 3547216 [93.8% / B]

BECKTON NEBULA P P707  
**WFL NEBULA 707 165Z**  
 WFL JULIAN 4179

BIEBER H HUGHES W109  
**WFL HUGHES 185B**  
 WFL PRAIRIE FIRE 048Z

Individual Data	
act. BW	66
WW ratio	95
YW ratio	94
SC	35.58
Frame	MOD

F:G ratio		87
Trait	Ratio	EPD / %
ADG	94	0.20
MARB	70	0.47 37%
REA	98	0.07 59%
CW	21	50%
YG	0.12	90%

HerdBuilder: 168 / 2%				GridMaster: 50 / 31%				
CED	BW	WW	YW	MLK	ME	HPG	CEM	STY
10	-3.6	62	94	20	-3	16	6	15
11%	15%	36%	38%	58%	23%	2%	24%	3%
AoD 2				dMPPA 98.0				

**96** **WFL FRANKLY 6027**  
 1/17/16 WFL:6027  
 3547234 [99.7% / B]

LJC MERLIN T179  
**WFL MERLIN 018A**  
 WFL COMMITMENT 042Y

SCHULER NEBULA P707 0050X  
**WFL NEBULA 050X 230B**  
 WFL PAWNEE 9160

Individual Data	
act. BW	56
WW ratio	105
YW ratio	99
SC	34.55
Frame	MOD-

F:G ratio		85
Trait	Ratio	EPD / %
ADG	91	0.22
MARB	152	1.13 1%
REA	77	-0.05 82%
CW	25	37%
YG	-0.03	32%

HerdBuilder: 132 / 13%				GridMaster: 55 / 1%				
CED	BW	WW	YW	MLK	ME	HPG	CEM	STY
8	-5.1	70	105	23	3	10	-1	13
22%	5%	12%	18%	30%	75%	64%	96%	14%
AoD 2				dMPPA 102.0				

**101** **WFL HARD DRIVE 6110**  
 2/6/16 WFL:6110  
 3547143 [93.8% / B]

LACY GOLD BAR 8123  
**BIEBER HARD DRIVE Y120**  
 BIEBER LAURA 158W

LSF PACKER 0006X  
**WFL PACKER 0006X 338A**  
 WFL COMMITMENT 909Z

Individual Data	
act. BW	98
WW ratio	116
YW ratio	111
SC	36.69
Frame	LARGE-

F:G ratio		107
Trait	Ratio	EPD / %
ADG	106	0.25
MARB	127	0.93 2%
REA	94	0.37 13%
CW	45	2%
YG	-0.02	36%

HerdBuilder: 97 / 49%				GridMaster: 52 / 6%				
CED	BW	WW	YW	MLK	ME	HPG	CEM	STY
2	1.1	86	126	19	3	12	3	9
80%	89%	1%	2%	67%	72%	36%	63%	63%
AoD 3				dMPPA 106.4				

**102** **WFL TOP FLIGHT 6235**  
 2/21/16 WFL:6235  
 3546974 [100% / A]

5L ADVANTAGE 3267-221Y  
**5L TOP FLIGHT 3010-491A**  
 5L OSCE 2948-3010

RED SIX MILE UTAH 455U  
**WFL UTAH 0145**  
 MRM 4912 K39 M04

Individual Data	
act. BW	81
WW ratio	103
YW ratio	98
SC	35.18
Frame	MOD

F:G ratio		118
Trait	Ratio	EPD / %
ADG	92	0.16
MARB	100	0.41 49%
REA	105	0.26 25%
CW	20	51%
YG	0.09	85%

HerdBuilder: 134 / 12%				GridMaster: 48 / 68%				
CED	BW	WW	YW	MLK	ME	HPG	CEM	STY
7	-1.8	65	90	18	-7	13	7	13
31%	41%	25%	47%	72%	7%	16%	10%	12%
AoD 6				dMPPA 98.5				

Another Top Flight son and one of the really feed efficient bulls in the offering gaining 18% more efficiently than his contemporaries.







**Lot 113 - WFL TOP FLIGHT 6256**

**113 WFL TOP FLIGHT 6256**  
 2/24/16 WFL:6256 [99.8% / B]  
 3547033

5L ADVANTAGE 3267-221Y  
**5L TOP FLIGHT 3010-491A**  
 5L OSCE 2948-3010

BROWN-CBAR AFFIRMED P7081  
**WFL AFFIRMED 073Y**  
 WFL LANCER 442 8029

Individual Data							
act. BW	85						
WW ratio	101						
YW ratio	99						
SC	35.28						
Frame	MOD-						

F:G ratio		99	
Trait	Ratio	EPD / %	
ADG	97	0.18	
MARB	98	0.52	30%
REA	110	0.47	8%
CW	27	30%	
YG	-0.11	11%	

HerdBuilder: 112 / 29%				GridMaster: 50 / 33%				
CED	BW	WW	YW	MLK	ME	HPG	CEM	STY
4	-0.9	70	99	19	-1	13	2	12
59%	58%	14%	29%	64%	35%	16%	83%	23%
				AoD 5	dMPPA 100.0			

**116 WFL OMG 6164**  
 2/15/16 WFL:6164 [98.8% / B]  
 3546954

SCHULER OMYGOODNESS 2121Z  
**SCHULER OMYGOODNESS 4805B**  
 SOR ANKIE NB0050X 2607Z

LJC MERLIN T179  
**WFL MERLIN 9223**  
 WFL CHEROKEE 774 6080

Individual Data							
act. BW	81						
WW ratio	105						
YW ratio	102						
SC	38.99						
Frame	MOD+						

F:G ratio		90	
Trait	Ratio	EPD / %	
ADG	100	0.23	
MARB	77	0.31	72%
REA	100	0.25	26%
CW	27	31%	
YG	0.03	60%	

HerdBuilder: 111 / 30%				GridMaster: 50 / 34%				
CED	BW	WW	YW	MLK	ME	HPG	CEM	STY
6	-2.3	64	101	21	4	12	1	11
38%	32%	29%	25%	47%	79%	36%	89%	26%
				AoD 7	dMPPA 96.8			

**117 WFL REBEL A759 6389**  
 3/12/16 WFL:6389 [98.5% / B]  
 3547014

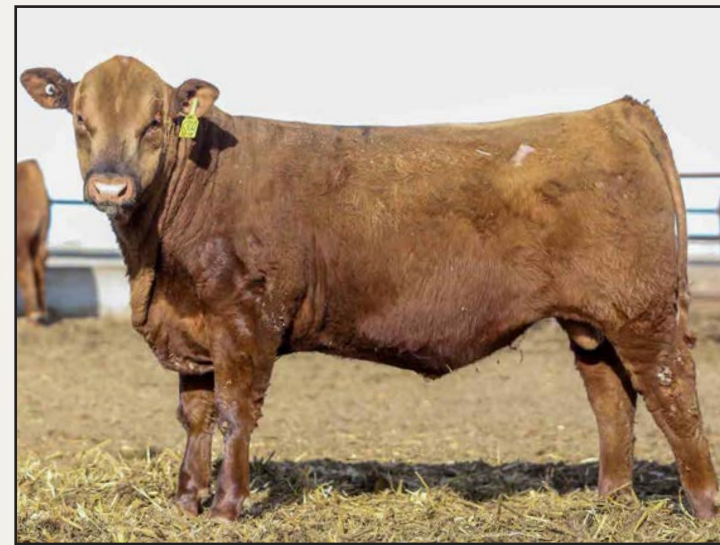
SCHULER REBEL 0029X  
**SCHULER REBEL A759**  
 SOR BRASKA LAN T899

TR JULIAN LT142  
**WFL LT 142 194Y**  
 WFL COMMITMENT 9084

Individual Data							
act. BW	93						
WW ratio	121						
YW ratio	112						
SC	39.33						
Frame	LARGE-						

F:G ratio		99	
Trait	Ratio	EPD / %	
ADG	100	0.26	
MARB	123	0.87	4%
REA	105	0.29	20%
CW	46	2%	
YG	0.13	93%	

HerdBuilder: 134 / 12%				GridMaster: 52 / 10%				
CED	BW	WW	YW	MLK	ME	HPG	CEM	STY
7	0.7	86	127	18	1	10	5	13
32%	83%	1%	2%	72%	54%	61%	35%	13%
				AoD 5	dMPPA 103.1			



**Lot 114 - WFL OMG 6305**

**114 WFL OMG 6305**  
 3/3/16 WFL:6305 [99.8% / B]  
 3547094

SCHULER OMYGOODNESS 2121Z  
**SCHULER OMYGOODNESS 4805B**  
 SOR ANKIE NB0050X 2607Z

5L NORSEMAN KING 2291  
**WFL NORSEMAN 078Z**  
 WFL LANCER 442 8029

Individual Data							
act. BW	93						
WW ratio	107						
YW ratio	104						
SC	33.54						
Frame	MOD+						

F:G ratio		104	
Trait	Ratio	EPD / %	
ADG	100	0.22	
MARB	87	0.45	42%
REA	99	0.25	25%
CW	29	24%	
YG	-0.02	39%	

HerdBuilder: 88 / 62%				GridMaster: 49 / 43%				
CED	BW	WW	YW	MLK	ME	HPG	CEM	STY
2	0.1	65	100	24	1	11	0	10
77%	76%	25%	27%	22%	55%	47%	96%	42%
				AoD 4	dMPPA 104.7			

**118 ALC MR STATEMENT D77**  
 2/9/16 ALC:D77 [100% / A]  
 3550082

LJC MISSION STATEMENT P27  
**PELTON STATEMENT 225W**  
 PELTONS MISS CORY 5037N

HXC MEATLOAF 0002X  
**ALC MISS MEATLOAF A309**  
 PELTON MISS CHI 9524W

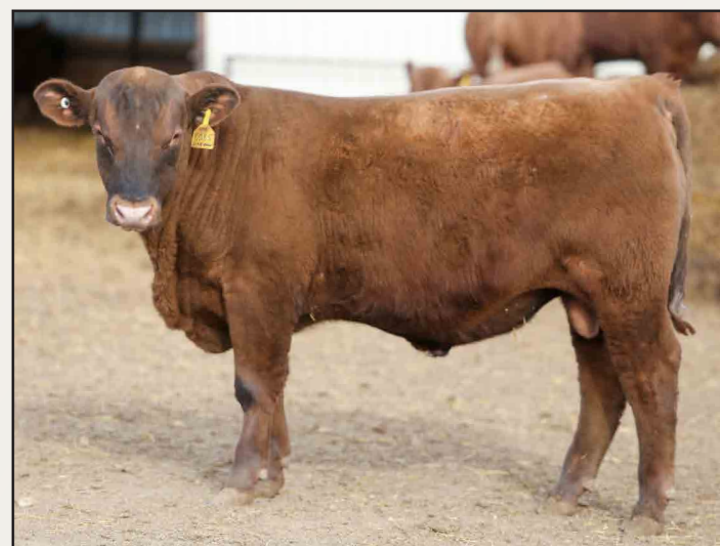
Individual Data							
act. BW	93						
WW ratio							
YW ratio							
SC	38.76						
Frame	LARGE-						

F:G ratio		96	
Trait	Ratio	EPD / %	
ADG		0.30	
MARB	86	0.99	2%
REA	110	0.40	11%
CW	44	3%	
YG	0.07	77%	

HerdBuilder: 93 / 55%				GridMaster: 53 / 2%				
CED	BW	WW	YW	MLK	ME	HPG	CEM	STY
0	0.1	77	125	26	4	14	2	9
91%	75%	4%	3%	15%	83%	14%	84%	68%
RA50K				AoD 3	dMPPA 94.2			



**Lot 118 - ALC MR STATEMENT D77**



**Lot 115 - WFL 159B 6085**

**115 WFL 159B 6085**  
 1/30/16 WFL:6085 [99.9% / B]  
 3547146

5L DEFENDER 560-30Z  
**5L DEFENDER 06Y-159B**  
 5L NACOMA 849-06Y

SCHULER ENVY 7342T  
**WFL ENVY 013A**  
 WFL UTAH 0257

Individual Data							
act. BW	95						
WW ratio	109						
YW ratio	106						
SC	39.97						
Frame	MOD+						

F:G ratio		132	
Trait	Ratio	EPD / %	
ADG	103	0.23	
MARB	97	0.87	4%
REA	97	0.11	49%
CW	36	11%	
YG	-0.05	24%	

HerdBuilder: 103 / 41%				GridMaster: 51 / 16%				
CED	BW	WW	YW	MLK	ME	HPG	CEM	STY
3	1.6	71	107	21	0	14	5	10
67%	93%	12%	16%	50%	40%	14%	35%	57%
				AoD 3	dMPPA 105.1			

**119 WTY FRANKLY 6072**  
 1/24/16 WTY:6072 [99.9% / B]  
 3547275

LJC MERLIN T179  
**WFL MERLIN 018A**  
 WFL COMMITMENT 042Y

BECKTON EPIC R397 K  
**WTY EPIC 164B**  
 WTY PAWNEE CANYON 8148

Individual Data							
act. BW	52						
WW ratio	94						
YW ratio	100						
SC	34.77						
Frame	MOD						

F:G ratio		111	
Trait	Ratio	EPD / %	
ADG	107	0.26	
MARB	89	0.49	34%
REA	98	0.55	4%
CW	32	17%	
YG	-0.03	34%	

HerdBuilder: 115 / 26%				GridMaster: 53 / 4%				
CED	BW	WW	YW	MLK	ME	HPG	CEM	STY
5	-4.5	74	116	19	1	9	-2	12
45%	8%	8%	7%	68%	50%	81%	99%	19%
				AoD 2	dMPPA 97.6			

**120 WFL HARD DRIVE 6098D**  
 2/4/16 WFL:6098D [99.5% / B]  
 3547135

LACY GOLD BAR 8123  
**BIEBER HARD DRIVE Y120**  
 BIEBER LAURA 158W

BIEBER ROOSEVELT W384  
**WFL ROOS 128A**  
 WFL VACATION C738

Individual Data							
act. BW	99						
WW ratio							
YW ratio							
SC	33.13						
Frame	MOD						

F:G ratio		103	
Trait	Ratio	EPD / %	
ADG		0.23	
MARB	99	0.61	18%
REA	97	0.43	9%
CW	35	12%	
YG	-0.04	31%	

HerdBuilder: 124 / 18%				GridMaster: 51 / 20%				
CED	BW	WW	YW	MLK	ME	HPG	CEM	STY
4	-0.1	73	110	16	-3	14	6	12
63%	71%	8%	12%	84%	22%	13%	30%	24%
				AoD 3	dMPPA 98.3			

We love our Envy daughters and the 105 MPPA dam of 6085 is one of our best. This is a very solid bull that ranks in the top 25% for gain, marbling and carcass weight and yield grade – all major value drivers for your next calf crop.



**121** **WFL FB 6357**  
 3/9/16 WFL:6357  
 3547043 [72.5% / 3]

5L FIREBRAND P19-T22  
**LELAND FIRE T22-150Z**  
 LELAND MAJORETTE 4199

WS BEEF KING W107  
**WFL BEEFKING 152Y**  
 WFL ROCKY 2460

Individual Data	
act. BW	90
WW ratio	112
YW ratio	111
SC	39.73
Frame	MOD

F:G ratio		107
Trait	Ratio	EPD / %
ADG	112	0.24
MARB	81	0.41 50%
REA	123	1.21 1%
CW	48	2%
YG	-0.29	3%

HerdBuilder: 63 / 90%					GridMaster: 51 / 16%							
CED	BW	WW	YW	MLK	ME	HPG	CEM	STY	MARB	REA	CW	YG
1	1.6	89	128	19	1	7	0	7	81	123	48	-0.29
87%	92%	1%	2%	68%	51%	95%	96%	87%				
AoD 5					dMPPA 102.9							

Cure YG 4 problems with this Leland Fire x Beef King bred bull that leads off a strong run of composite bulls. He has the highest ranking YG EPD in the entire offering.

**126** **WFL FB 6404**  
 3/14/16 WFL:6404  
 3547000 [74.5% / 3]

5L FIREBRAND P19-T22  
**LELAND FIRE T22-150Z**  
 LELAND MAJORETTE 4199

MULTIPLE RED ANGUS SIRE  
**WFL PRAIRIE FIRE RED 05**  
 HOODOO BUCKSKIN F1

Individual Data	
act. BW	94
WW ratio	111
YW ratio	108
SC	39.89
Frame	MOD

F:G ratio		99
Trait	Ratio	EPD / %
ADG	104	0.24
MARB	114	0.64 15%
REA	107	0.28 21%
CW	39	6%
YG	0.07	77%

HerdBuilder: 50 / 96%					GridMaster: 50 / 29%							
CED	BW	WW	YW	MLK	ME	HPG	CEM	STY	MARB	REA	CW	YG
1	1.2	76	114	20	-6	6	0	6	114	107	39	0.07
86%	89%	5%	8%	59%	8%	99%	95%	92%				
AoD 6					dMPPA 103.1							



**Lot 126 - WFL FB 6404**

**122** **WFL 165Z 6023**  
 1/16/16 WFL:6023  
 3547243 [87.5% / B]

BECKTON NEBULA P P707  
**WFL NEBULA 707 165Z**  
 WFL JULIAN 4179

MUSHRUSH LOCK 'N' LOAD U213  
**WFL L-L 034B**  
 WFL PRAIRIE FIRE RED 07

Individual Data	
act. BW	64
WW ratio	95
YW ratio	96
SC	36.51
Frame	MOD

F:G ratio		91
Trait	Ratio	EPD / %
ADG	98	0.14
MARB	81	0.36 63%
REA	92	-0.12 92%
CW	3	91%
YG	-0.05	27%

HerdBuilder: 153 / 5%					GridMaster: 50 / 41%							
CED	BW	WW	YW	MLK	ME	HPG	CEM	STY	MARB	REA	CW	YG
15	-5.6	46	69	24	-4	15	6	13	81	92	3	-0.05
1%	3%	85%	83%	24%	17%	4%	18%	13%				
AoD 2					dMPPA 98.0							

**123** **WFL 165Z 6254**  
 2/24/16 WFL:6254  
 3547055 [74.6% / 3]

BECKTON NEBULA P P707  
**WFL NEBULA 707 165Z**  
 WFL JULIAN 4179

WS BEEF MAKER R13  
**WFL BEEFMAKER 154Z**  
 WFL 6042-1293

Individual Data	
act. BW	94
WW ratio	106
YW ratio	105
SC	38.78
Frame	MOD+

F:G ratio		115
Trait	Ratio	EPD / %
ADG	104	0.25
MARB	74	0.52 29%
REA	111	0.61 2%
CW	33	15%
YG	-0.04	30%

HerdBuilder: 139 / 10%					GridMaster: 51 / 18%							
CED	BW	WW	YW	MLK	ME	HPG	CEM	STY	MARB	REA	CW	YG
9	-0.8	69	109	23	0	14	6	12	74	111	33	-0.04
17%	59%	15%	14%	30%	45%	12%	19%	19%				
AoD 4					dMPPA 102.0							

**127** **WFL FB 6414**  
 3/17/16 WFL:6414  
 3546984 [74.5% / 3]

5L FIREBRAND P19-T22  
**LELAND FIRE T22-150Z**  
 LELAND MAJORETTE 4199

MULTIPLE RED ANGUS SIRE  
**WFL PRAIRIE FIRE RED 05**  
 HOODOO BUCKSKIN F1

Individual Data	
act. BW	83
WW ratio	110
YW ratio	98
SC	37.49
Frame	MOD-

F:G ratio		95
Trait	Ratio	EPD / %
ADG	84	0.15
MARB	125	0.65 15%
REA	110	0.43 9%
CW	22	47%
YG	-0.06	23%

HerdBuilder: 60 / 92%					GridMaster: 49 / 44%							
CED	BW	WW	YW	MLK	ME	HPG	CEM	STY	MARB	REA	CW	YG
3	-0.7	66	90	21	-6	8	0	7	125	110	22	-0.06
69%	60%	22%	47%	48%	8%	88%	95%	88%				
AoD 6					dMPPA 103.1							

**128** **WFL 165Z 6050**  
 1/20/16 WFL:6050  
 3547245 [87.5% / B]

BECKTON NEBULA P P707  
**WFL NEBULA 707 165Z**  
 WFL JULIAN 4179

MUSHRUSH LOCK 'N' LOAD U213  
**WFL L-L 061B**  
 WFL PRAIRIE FIRE RED 26

Individual Data	
act. BW	68
WW ratio	97
YW ratio	100
SC	36.64
Frame	MOD-

F:G ratio		105
Trait	Ratio	EPD / %
ADG	103	0.24
MARB	67	0.30 76%
REA	92	-0.06 85%
CW	22	45%
YG	0.01	50%

HerdBuilder: 150 / 6%					GridMaster: 51 / 22%							
CED	BW	WW	YW	MLK	ME	HPG	CEM	STY	MARB	REA	CW	YG
14	-4.1	60	98	24	-4	16	6	12	67	92	22	0.01
2%	11%	41%	31%	27%	17%	4%	22%	18%				
AoD 2					dMPPA 98.8							

One of the most efficient composite bulls; 6357 is a 3/4 brother to the 85B bull who topped our 2015 sale and is the sire of many of the best SimAngus bulls in this sale including the good bull that sells as lot 125.

Moderate framed Buckskin bull with lots of rib and wide base. With 1/4 Char and a 110 REA ratio it is no surprise he has higher REA EPD than 90% of non-parent Red Angus. Get this...he has more marbling than 85% of Red Angus.

**124** **ALC MR BEEFKING D81**  
 2/10/16 ALC:D81  
 3550085 [50.0% / 3]

WS BEEF MAKER R13  
**WS BEEF KING W107**  
 WS MISS DREAMBOAT T17

BROWN COMMITMENT S7206  
**PELTON MISS KENDRA X121**  
 PELTONS MISS CORY 5037N

Individual Data	
act. BW	92
WW ratio	
YW ratio	
SC	35.79
Frame	LARGE-

F:G ratio		108
Trait	Ratio	EPD / %
ADG		0.18
MARB	100	0.83 5%
REA	106	0.90 1%
CW	34	14%
YG	-0.21	4%

HerdBuilder: 69 / 86%					GridMaster: 52 / 9%							
CED	BW	WW	YW	MLK	ME	HPG	CEM	STY	MARB	REA	CW	YG
1	-0.4	82	111	23	0	10	4	6	100	106	34	-0.21
89%	66%	2%	11%	31%	43%	68%	50%	92%				
AoD 6					dMPPA 102.6							

**125** **WFL 085B 6013**  
 1/15/16 WFL:6013  
 3547267 [73.3% / 3]

WFL NEBULA 707 165Z  
**WFL 165Z 085B**  
 WFL BEEFMAKER 116Z

JJX TONKA 267Z  
**WFL TONKA 308B**  
 WFL BEEFKING 152Y

Individual Data	
act. BW	56
WW ratio	
YW ratio	
SC	37.48
Frame	MOD-

F:G ratio		98
Trait	Ratio	EPD / %
ADG		0.23
MARB	0	0.79 6%
REA	0	0.60 2%
CW	27	30%
YG	-0.17	5%

HerdBuilder: 115 / 25%					GridMaster: 53 / 2%							
CED	BW	WW	YW	MLK	ME	HPG	CEM	STY	MARB	REA	CW	YG
9	-3.3	68	105	23	1	11	5	9	0	0	27	-0.17
16%	18%	17%	19%	28%	53%	50%	33%	61%				
AoD 2					dMPPA							

**129** **WFL REBEL A759 6396**  
 3/13/16 WFL:6396  
 3546994 [74.1% / 3]

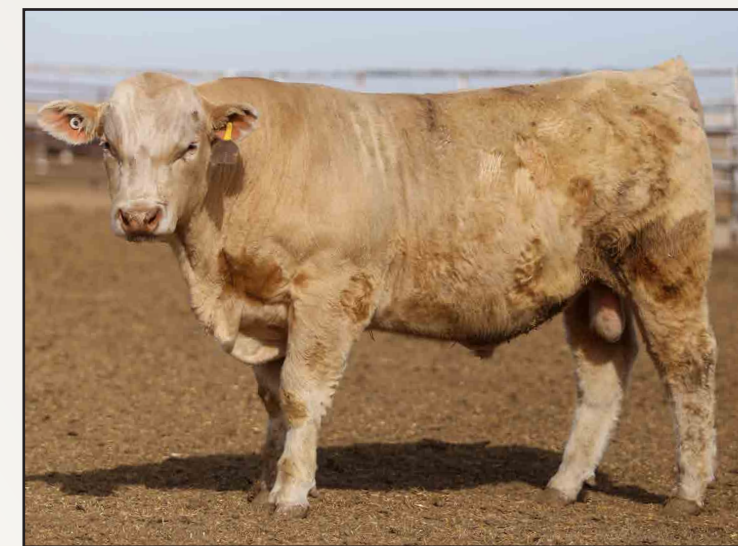
SCHULER REBEL 0029X  
**SCHULER REBEL A759**  
 SOR BRASKA LAN T899

MULTIPLE RED ANGUS SIRE  
**WFL PRAIRIE FIRE RED 05**  
 HOODOO BUCKSKIN F1

Individual Data	
act. BW	93
WW ratio	99
YW ratio	101
SC	36.36
Frame	MOD

F:G ratio		93
Trait	Ratio	EPD / %
ADG	103	0.23
MARB	79	0.19 90%
REA	103	0.28 21%
CW	34	14%
YG	0.00	45%

HerdBuilder: 90 / 60%					GridMaster: 48 / 68%							
CED	BW	WW	YW	MLK	ME	HPG	CEM	STY	MARB	REA	CW	YG
5	1.4	66	103	17	-7	7	4	10	79	103	34	0.00
44%	91%	24%	21%	80%	7%	97%	52%	52%				
AoD 6					dMPPA 98.5							



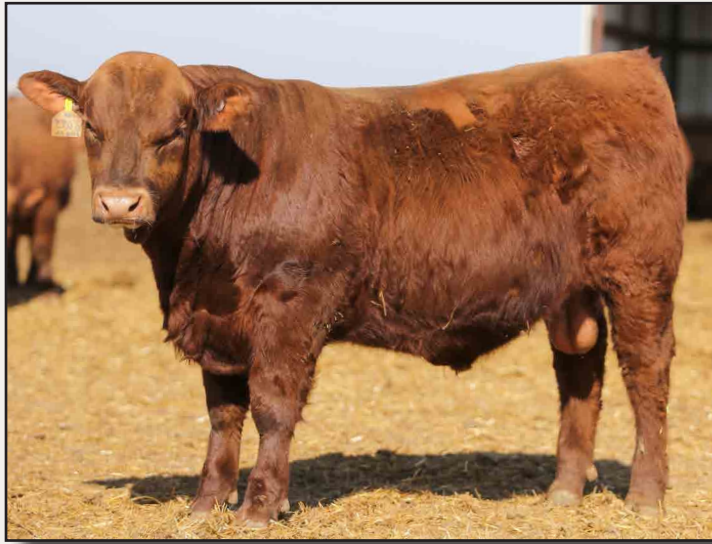
**Lot 128 - WFL 165Z 6050**

**130****WFL REBEL A759 6400**3/13/16 WFL:6400  
3547005 [74.1% / 3]

Individual Data		
act. BW		98
WW ratio		94
YW ratio		99
SC		39.36
Frame		MOD+

SCHULER REBEL 0029X  
**SCHULER REBEL A759**  
 SOR BRASKA LAN T899  
 MULTIPLE RED ANGUS SIRES  
**WFL PRAIRIE FIRE RED 05**  
 HOODOO BUCKSKIN F1

HerdBuilder: 74 / 80%										GridMaster: 47 / 91%		
CED	BW	WW	YW	MLK	ME	HPG	CEM	STY				
1	3.9	68	104	13	-7	7	1	10				
84%	99%	19%	19%	94%	6%	97%	87%	47%				
AoD 6										dMPPA 96.9		

**Lot 132 - WFL 165Z 6055****Lot 133 - WFL REBEL A759 6416****131****WFL 159B 6273**2/27/16 WFL:6273  
3547155 [86.8% / 3]

Individual Data		
act. BW		80
WW ratio		103
YW ratio		103
SC		33.87
Frame		MOD

5L DEFENDER 560-30Z  
**5L DEFENDER 06Y-159B**  
 5L NACOMA 849-06Y  
 MULTIPLE RED ANGUS SIRES  
**WFL MS 312A**  
 WFL ENVY 9086

HerdBuilder: 94 / 54%										GridMaster: 52 / 11%		
CED	BW	WW	YW	MLK	ME	HPG	CEM	STY				
5	-0.5	62	97	21	-2	13	4	8				
48%	66%	35%	33%	51%	25%	15%	58%	77%				
AoD 3										dMPPA 97.7		

**132****WFL 165Z 6055**1/20/16 WFL:6055  
3547244 [87.5% / B]

Individual Data		
act. BW		96
WW ratio		
YW ratio		
SC		35.14
Frame		MOD

BECKTON NEBULA P P707  
**WFL NEBULA 707 165Z**  
 WFL JULIAN 4179  
 MUSHRUSH LOCK 'N' LOAD U213  
**WFL L-L 090B**  
 WFL PRAIRIE FIRE RED 08

HerdBuilder: 148 / 6%										GridMaster: 49 / 46%		
CED	BW	WW	YW	MLK	ME	HPG	CEM	STY				
12	-2.5	58	91	18	-4	16	7	13				
5%	29%	50%	46%	76%	15%	4%	17%	13%				
AoD 2										dMPPA		

**133****WFL REBEL A759 6416**3/18/16 WFL:6416  
3547045 [86.2% / 3]

Individual Data		
act. BW		98
WW ratio		125
YW ratio		109
SC		40.02
Frame		MOD

SCHULER REBEL 0029X  
**SCHULER REBEL A759**  
 SOR BRASKA LAN T899  
 SCHULER ENVY 7342T  
**WFL ENVY 195Y**  
 WFL REMI C741

HerdBuilder: 105 / 37%										GridMaster: 48 / 67%		
CED	BW	WW	YW	MLK	ME	HPG	CEM	STY				
3	3.5	83	124	21	0	8	5	12				
66%	99%	1%	3%	48%	40%	85%	45%	24%				
AoD 5										dMPPA 113.8		

**134****WFL 085B 6012**1/15/16 WFL:6012  
3547171 [73.3% / 3]

Individual Data		
act. BW		52
WW ratio		
YW ratio		
SC		34.48
Frame		MOD-

WFL NEBULA 707 165Z  
**WFL 165Z 085B**  
 WFL BEEFMAKER 116Z  
 JJX TONKA 267Z  
**WFL TONKA 308B**  
 WFL BEEFKING 152Y

HerdBuilder: 115 / 25%										GridMaster: 53 / 2%		
CED	BW	WW	YW	MLK	ME	HPG	CEM	STY				
9	-3.3	68	105	23	1	11	5	9				
16%	18%	17%	19%	28%	53%	50%	33%	61%				
AoD 2										dMPPA		

**136****RIMROCK D02**1/24/16 ALC:D02  
3165341 [1/2 SM / 1/2 AR]

Individual Data		
act. BW		72
WW ratio		100
YW ratio		100
SC		
Frame		MOD+

WS BEEF KING W107  
**CDI RIMROCK 325Z**  
 CDI MS TOP GUN 5U  
 BROWN COMMITMENT S7206  
**MS COMMT B446**  
 MS ENVY X052

API: 148.9 / 15%										TI: 76.3 / 20%		
CED	BW	WW	YW	MLK	ME	HPG	CEM	STY				
14.3	-1.5	61.4	84.6	19.6	50.3			13.6				
25%	20%	50%	70%	65%	60%	%	%	10%				
AoD 2016										dMPPA		

**138****WFL REBEL 6141**2/12/16 WFL:6141  
3547065 [87.4% / B]

Individual Data		
act. BW		65
WW ratio		81
YW ratio		93
SC		36.89
Frame		MOD

BECKTON NEBULA P P707  
**SCHULER REBEL 0029X**  
 SOR RUTH RMR 5055R  
 LELAND BEEF MAKER 197X  
**WFL SIMANGUS 275Z**  
 WFL ENVY 9194

HerdBuilder: 147 / 6%										GridMaster: 50 / 27%		
CED	BW	WW	YW	MLK	ME	HPG	CEM	STY				
14	-6.2	46	76	28	-3	10	7	13				
2%	2%	86%	74%	5%	22%	59%	14%	12%				
AoD 4										dMPPA 86.0		

**135****ALC MR RIMROCK D46**2/4/16 ALC:D46  
3550095 [50% / 3]

Individual Data		
act. BW		90
WW ratio		
YW ratio		
SC		37.1
Frame		MOD+

WS BEEF KING W107  
**CDI RIMROCK 325Z**  
 CDI MS TOP GUN 5U  
 5L DESTINATION 893-6215  
**ALC MIS DESTINATION A318**  
 SOR MARLEE BRN CMT 9266W

HerdBuilder: 112 / 29%										GridMaster: 50 / 27%		
CED	BW	WW	YW	MLK	ME	HPG	CEM	STY				
3	-0.2	65	90	18	-2	11	10	10				
65%	69%	27%	47%	71%	26%	50%	2%	44%				
AoD 3										dMPPA 102.9		

**137****MR OSCAR D09**1/27/16 ALC:D09  
3208470 [1/8 SM / 7/8 AR]

Individual Data		
act. BW		71
WW ratio		100
YW ratio		100
SC		
Frame		MOD+

MLK CRK CUB 722  
**RED CROWFOOT OLE'S OSCAR**  
 CROWFOOT OMEGA 9179J  
 BROWN JYJ REDEMPTION Y1334  
**MS REDEMPTION B444**  
 MS BEEFMAKER X003

API: 153.9 / 10%										TI: 76.2 / 20%		
CED	BW	WW	YW	MLK	ME	HPG	CEM	STY				
16.6	-3.8	59.2	95.8	21.4	51			11.1				
10%	2%	55%	45%	50%	50%	%	%	30%				
AoD 2016										dMPPA		

**139****WFL 085B 6035**1/18/16 WFL:6035  
3547197 [86.0% / 3]

Individual Data		
act. BW		58
WW ratio		100
YW ratio		98
SC		36.58
Frame		MOD

WFL NEBULA 707 165Z  
**WFL 165Z 085B**  
 WFL BEEFMAKER 116Z  
 LELAND RED DIRECTION 253X  
**WFL DIRECTOR 304B**  
 WFL BIG CHER 4154

HerdBuilder: 125 / 17%										GridMaster: 52 / 6%		
CED	BW	WW	YW	MLK	ME	HPG	CEM	STY				
10	-4.3	63	98	23	4	13	6	10				
13%	9%	31%	30%	34%	81%	17%	21%	49%				
AoD 2										dMPPA 100.0		

We end our hybrid offering with three half-brothers all of whom rank in the top 25% or Better for Herdbuilder and 10% or better for GridMaster. 6035 comes with a 15% advantage in feed efficiency.







WFL EPIC 6245

2/22/16 WFL:6245
3546928 [99.6% / B]

BECKTON EPIC K F075
BECKTON EPIC R397 K
BECKTON KIT F468 JL
BROWN COMMITMENT S7206

WFL COMMITMENT 9136
WFL 6042-C241

Individual Data table with columns: act. BW, WW ratio, YW ratio, SC, Frame. Values: 90, 102, 92, 38.21, MOD+

F:G ratio 79
Trait Ratio EPD / %

HerdBuilder: 93 / 56% GridMaster: 49 / 57%
CED BW WW YW MLK ME HPG CEM STY
-3 1.0 65 95 20 -1 11 1 12
99% 87% 27% 37% 55% 35% 42% 88% 20%
AoD 7 dMPPA 99.2



RJRA REBEL A759 6427

3/23/16 3547291 RJRA:6427 [99.2%]

SCHULER REBEL 0029X
SCHULER REBEL A759
SOR BRASKA LAN T899
LORENZEN GOOD AS GOLD 8563

RJRA GOLDIE 308Z
RJRA ENTERPRISE 6032

Individual Data table with columns: act. BW, WW ratio, YW ratio, SC, Frame. Values: 83, 105, 99, 33.68, MOD

F:G ratio 89
Trait Ratio EPD / %

HerdBuilder: 111 / 30% GridMaster: 51 / 23%
CED BW WW YW MLK ME HPG CEM STY
5 1.0 77 117 16 0 8 5 11
52% 88% 4% 6% 84% 40% 88% 36% 30%
AoD 4 dMPPA 99.3

REFERENCE SIRE

Table of reference sire data with columns: RAAA#, Name, Cat, HB, GM, CE, BW, WW%, YW, MM, ME, HPG, CEM, STAY, Marb, YG, CW, REA. Lists various sire performance metrics.



WFL EPIC 6202

2/18/16 WFL:6202
3546897 [99.0% / B]

BECKTON EPIC K F075
BECKTON EPIC R397 K
BECKTON KIT F468 JL
LELAND BIG LEAGUE 4310

WFL BIG LEAGUE 8134
WFL BIG CHER 4094

Individual Data table with columns: act. BW, WW ratio, YW ratio, SC, Frame. Values: 97, 108, 102, 38.08, MOD+

F:G ratio 81
Trait Ratio EPD / %

HerdBuilder: 96 / 50% GridMaster: 49 / 59%
CED BW WW YW MLK ME HPG CEM STY
-4 2.3 82 124 17 -4 10 3 12
99% 96% 1% 3% 80% 19% 67% 63% 23%
AoD 8 dMPPA 104.9



WFL 2758 6384

3/11/16 WFL:6384
3547019 [99.9% / B]

5L DEFENDER 560-30Z
5L DEFENDER 4772-88B
5L RED GEM 649-4772
LJC MERLIN T179

WFL MERLIN 147Y
HRA JOSIE 226

Individual Data table with columns: act. BW, WW ratio, YW ratio, SC, Frame. Values: 89, 100, 104, 37.8, MOD

F:G ratio 106
Trait Ratio EPD / %

HerdBuilder: 132 / 13% GridMaster: 51 / 14%
CED BW WW YW MLK ME HPG CEM STY
7 -1.6 65 100 22 2 15 5 12
32% 45% 27% 26% 36% 65% 4% 44% 19%
AoD 5 dMPPA 98.6

Defender son with Top 15% HerdBuilder & GridMaster who excelled in Gain, Marbling and Feed Efficiency.



WFL MS 6373

3/10/16 WFL:6373
3547066 [23.7% / 3]

SCHULER REBEL 0029X
SCHULER REBEL A759
SOR BRASKA LAN T899
WS BEEF MAKER R13
WFL BEEFMAKER 116Z
WFL CHEROKEE 774 6084

Individual Data table with columns: act. BW, WW ratio, YW ratio, SC, Frame. Values: 102, 120, 118, 42.26, MOD+

F:G ratio 102
Trait Ratio EPD / %

HerdBuilder: 52 / 96% GridMaster: 47 / 89%
CED BW WW YW MLK ME HPG CEM STY
5 0.9 57 77 20 -7 8 3 6
48% 86% 54% 72% 56% 6% 90% 72% 95%
AoD 4 dMPPA 106.0



WFL EPIC A7540 6304

3/3/16 WFL:6304
3547092 [100% / A]

BECKTON EPIC R397 K
BROWN EPIC A7540
BROWN MS PACKER X7564
SCHULER NEBULA P707 0050X
WFL NEBULA 0050 160Z
WFL PAWNEE CANYON 8109

Individual Data table with columns: act. BW, WW ratio, YW ratio, SC, Frame. Values: 102, 108, 108, 35.54, MOD+

F:G ratio
Trait Ratio EPD / %

HerdBuilder: 137 / 10% GridMaster: 51 / 13%
CED BW WW YW MLK ME HPG CEM STY
-1 1.9 77 124 21 3 14 1 16
95% 95% 4% 3% 47% 69% 14% 87% 2%
AoD 4 dMPPA 104.0

Stay till the end...and not just for the commercial heifers..This last bull in the sale ranks in the top 13% or better for HerdBuilder and GridMaster and was 9% better for Gain and 13% better for feed conversion.

CUSTOMER INCENTIVES

Volume Discounts: Buy 5 Bulls and get a 3% Discount • Buy 10 bulls and get a 6% Discount
Trucking Discount: Haul your bull purchases away on sale day, or arrange to pick them up at the ranch no later than Friday, March 13th and receive an additional \$100 per bull discount.

## Commercial Heifer Sale

- 1) Heifers to sell immediately following the bull sale.
- 2) All open heifers have been pelvic measured and reproductive tract scored.
- 3) Heifers will sell in gate cut groups of 10 head within their respective lot number.
- 4) Successful bidder may "roll" successive groups within the same lot.

### Lot 200 - Commercial Red Angus Fall Calving Bred Heifers - (110 head total)

**Lot Description:**

110 head of Fall Calving bred heifers that we purchased from some of our most progressive GridMaster Awarded Commercial Customers' Herds. Bred AI on December 3, 2016 to calving ease Wedel Red Angus herd sires, then exposed until January 1, 2017. Ultrasounded and sorted into AI bred and Bull bred. These heifers are all solid red.

- 200 (a) 10 head \_\_\_\_\_ (all AI bred)
- 200 (b) 10 head \_\_\_\_\_ (all AI bred)
- 200 (c) 10 head \_\_\_\_\_ (all AI bred)
- 200 (d) 10 head \_\_\_\_\_ (all AI bred)
- 200 (e) 10 head \_\_\_\_\_ (all AI bred)
- 200 (f) 10 head \_\_\_\_\_ (all AI bred)
- 200 (g) 10 head \_\_\_\_\_ (all AI bred)
- 200 (h) 10 head \_\_\_\_\_ (AI and natural service bred)
- 200 (i) 10 head \_\_\_\_\_ (all natural service bred)
- 200 (j) 10 head \_\_\_\_\_ (all natural service bred)
- 200 (k) 10 head \_\_\_\_\_ (all natural service bred)

### Lot 201 - Commercial Red Angus Open Heifers - (80 head total)

**Lot Description:**

80 head of powerful, stout made commercial heifers purchased from some of our most progressive GridMaster Awarded commercial Customers' Herds. Pelvic measured & repro tract scored – these heifers sell open and ready to breed for Spring 2018 calves. These heifers are all solid red.

- 201 (a) 10 head \_\_\_\_\_
- 201 (b) 10 head \_\_\_\_\_
- 201 (c) 10 head \_\_\_\_\_
- 201 (d) 10 head \_\_\_\_\_
- 201 (e) 10 head \_\_\_\_\_
- 201 (f) 10 head \_\_\_\_\_
- 201 (g) 10 head \_\_\_\_\_
- 201 (h) 10 head \_\_\_\_\_

### Lot 202 - Commercial Red Angus Open Heifers - (80 head total)

**Lot Description:**

80 head of moderate, easy fleshing commercial heifers purchased from some of our most progressive GridMaster Awarded commercial Customers' Herds. Pelvic measured & repro tract scored – these heifers sell open and ready to breed for Spring 2018 calves. These heifers are all solid red.

- 202 (a) 10 head \_\_\_\_\_
- 202 (b) 10 head \_\_\_\_\_
- 202 (c) 10 head \_\_\_\_\_
- 202 (d) 10 head \_\_\_\_\_
- 202 (e) 10 head \_\_\_\_\_
- 202 (f) 10 head \_\_\_\_\_
- 202 (g) 10 head \_\_\_\_\_
- 202 (h) 10 head \_\_\_\_\_

### Lot 203 - Commercial Red Angus Open Heifers - (50 head total)

**Lot Description:**

50 head of Buckskin heifers from Wedel Red Angus bull customers. 100% calf-hood vaccinated. Double round of worming and vaccinations with no brands or implants. These heifers will weigh around 835 lbs by sale time and have been raised on winter wheat, free choice hay and mineral. Pelvic measured & repro tract scored – these heifers sell open and ready to breed for Spring 2018 calves.

- 203 (a) 10 head \_\_\_\_\_
- 203 (b) 10 head \_\_\_\_\_
- 203 (c) 10 head \_\_\_\_\_
- 203 (d) 10 head \_\_\_\_\_
- 203 (e) 10 head \_\_\_\_\_



**We help write customer success stories...**  
Wedel Red Angus bull customers receive GridMaster awards at Superior's Video Royal Sale in Winnemucca, NV.



# Feeder Calf Certification Program

1. Make the call.
2. Provide special documentation.
3. Purchase tags.
4. Tag calves.
5. Fill out Enrollment Agreement.
6. Receive Certificate of Compliance (COC).



Red Angus Marketing Programs | [redangus.org](http://redangus.org) | (940) 387-3502

## Bull Selection – Simplified.

Red Angus stakeholders have enjoyed the capability of selecting bulls based on economically relevant traits (ERTs), such as Heifer Pregnancy or Stayability, that truly impact their operations profitability. While these ERTs allow for efficient selection decisions, the growing number of ERTs and EPDs has resulted in confusion as producers attempt to estimate a sire's overall impact. In response, RAAA has developed the HerdBuilder and GridMaster indices, which answer the question:

**"What impact will each potential sire have on my operation's profitability?"**

**While the process of calculating an index is very complex, the resulting selection tool is very simple to implement.**

HerdBuilder and GridMaster are expressed as differences in profitability per exposure.

For more information, visit [RedAngus.org](http://RedAngus.org).

Ranch Tested. Rancher Trusted.

# Red Angus

## HERDBUILDER

Producers selecting bulls to develop profitable replacement females and maximize the value of non-replacement marketed progeny should incorporate the HerdBuilder Index into their selection decisions.

The HerdBuilder Index is built using the following scenario:

- Red Angus bulls mated to cows and heifers
- Replacement heifers retained from within the herd
- All remaining progeny sold on a quality-based carcass grid

Given that replacement heifers are retained, significant influence is placed on the obvious maternal ERTs of Stayability, Heifer Pregnancy and Calving Ease. Additionally, with all remaining progeny sold on a quality-based carcass grid, Marbling, Yield Grade and growth EPDs also impact the HerdBuilder Index.

## GRIDMASTER

Use the GridMaster Index if your operation's primary goal is maximizing profitability of feeders in the feedyard and on the rail.

The GridMaster Index is built using the following scenario:

- Red Angus bulls mated to cows
- All progeny sold on a quality-based carcass grid

Marbling, Yield Grade and growth EPDs are the traits of primary importance in the GridMaster Index.



*Achieve it!*

# RETURN ON INVESTMENT

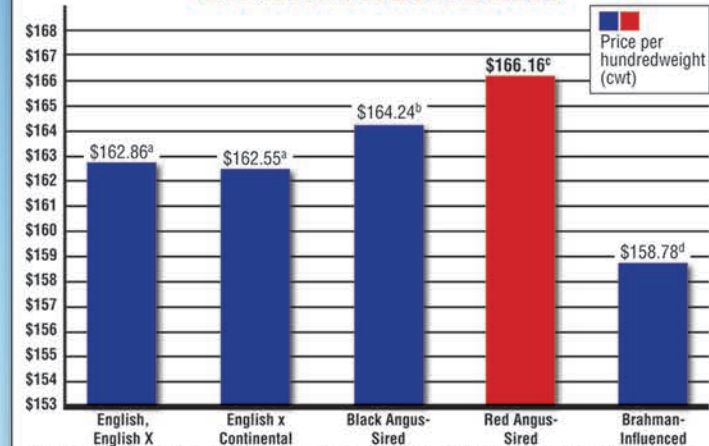
Red Angus genetics will improve your return on investment!



"For 10 to 15 years all the buyers ever talked about was black calves, and the black calves always brought more than everything else. Now I can honestly say that good Red Angus calves outsell the black calves and I know the Red Angus bred heifers will outsell black Angus bred heifers of equal quality every day."

– Jim Davis, Superior Livestock Auction

## Effect of Breed Description on the Sale Price of Beef Calves\*



\* King, et al., 2015. The effect of breed description on the sale price of beef calves sold through 116 Superior Livestock Auction's video sales from 2010 – 2014. J. Animal Science, Volume 93, Supplement S-3, pp 640-641.  
<sup>abcd</sup> Means with unlike superscripts differ (P<0.05).

Independent research shows Red Angus-sired calves sold for a higher price than all other breed groups. Red Angus bulls make a positive difference in your breeding program's bottom line.

**Invest in your future today!**

## Red Angus Marketing Programs

- Free-Enrollment Tag Programs
- Dedicated Feeder Calf Sales
- Free Marketing Assistance from RAAA Staff
- Red Angus Grids
  - Tyson's Choice+ Premium Grid
  - Greater Omaha's G.O. Red Grid

Contact the Association today for more information on achieving the most return on your Red Angus investment.

Ranch Tested. Rancher Trusted.

# Red Angus

[RedAngus.org](http://RedAngus.org)  
(940) 387-3502



## • IMPORTANT INFORMATION •

**Mail or Phone Bids:** If you cannot attend the sale, bids may be directed to Wedel Red Angus or one of the listed buyer representatives. All bids will be handled confidentially.

**Lunch** is on us, and begins at 11:00 am CST.

**Pledge:** Wedel Red Angus guarantees the fertility and disposition of every animal purchased through the sale.

### **Sale Terms and Conditions:**

**Bidding:** The auctioneer in charge will settle any disputes as to bids, and his decision on such matters shall be final.

Terms of the sale are cash.

**Purchaser's Risk:** Each animal becomes the risk of purchaser as soon as it is sold. Wedel Red Angus will care for sold animals free of charge until loaded for shipment, or until one week after the sale - but at the purchaser's risk.

**Announcements** from the auction block shall take precedence over this and all other printed material.

**Identification:** Seller offers each bull with a readable tattoo corresponding to its registration.

**Guarantees:** All animals sell under the guarantees as suggested by the Red Angus Association of America, a copy of which will be made available at the sale.

### **Rights and Obligations:**

A) The above terms and conditions of sale shall constitute an agreement between buyer and seller of each animal and shall be equally binding upon both. Each sale or resale of an animal constitute a separate transaction.

B) All persons attend the sale at their own risk. Neither Wedel Red Angus, nor any other person connected with the management of the sale assumes any liability, legal or otherwise.

### **Delivery:**

- Bulls will be delivered **FREE** of charge for the first 500 miles and at cost after that.
- Heifers will be delivered at cost.
- Deliveries begin immediately after the sale. If you prefer not to take delivery as scheduled, we will care for your bull purchases at our risk for \$3.00/hd/day to cover feed costs. The cost begins on April one and continues through the date your bulls are picked up.
- Please advise the sale clerks of an appropriate date for your bulls to be picked up and the appropriate feed costs will be included in your invoice.
- We always appreciate your assistance in getting the bulls delivered in a timely manner.

### **Retained interest & Semen Rights:**

Wedel Red Angus will retain 1/2 semen interest on all bulls. Purchaser receives 100% possession and 100% salvage value. Wedel Red Angus reserves the right to collect, use and market semen; purchaser has equal right to do the same. Unless mutually agreed, semen collection will be at Wedel's expense and the purchaser's convenience. Wedel Red Angus will assume full liability at the purchase price of the bull during collection, including transportation to and from the collection facility - unless the collection is mutually agreed upon between Wedel and the purchaser, in which case the liability and expenses will be shared equally.

### **Scrotal Circumference & Fertility:**

All bulls have been fertility examined to insure against seminal vasculitis. All bulls have been semen tested and the purchaser will receive a breeding soundness evaluation which follows the guidelines established by the Society of Theriogenology. Scrotal measurements were adjusted to 365 days.

**All bulls will be Trick tested negative.**

### **Category:**

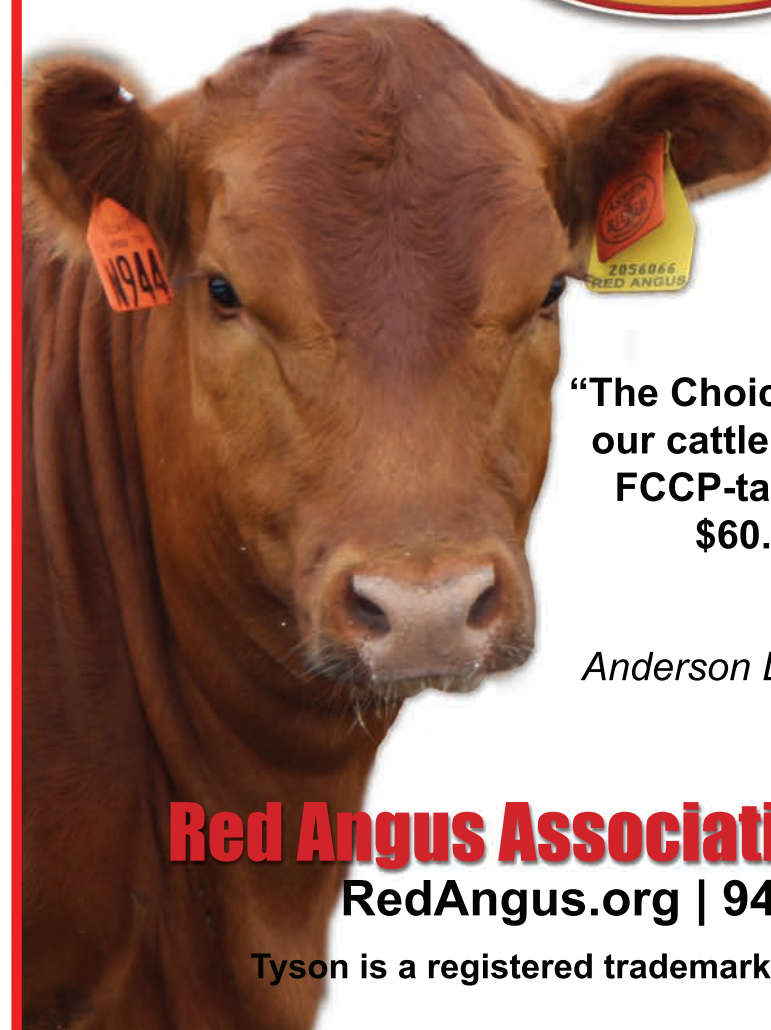
This classifies an animal's registration with the Red Angus Association of America (RAAA) according to its percentage of Red Angus blood:

- 1A** 100% Red Angus; no disqualifying features.
- 1B** Greater or equal to 87% Red Angus blood, but less than 100%; no disqualifying features.
- 2** Equal or greater to 87% Red Angus and up to 100%; with disqualifying characteristics.
- 3** Less than 87% Red Angus.

**Headquarters:** 9 miles west of Leoti, KS on Hwy 96  
Then north on Rd 3 for 5 1/2 miles

# Choice<sup>+</sup>

**Tyson Fresh Meats' Red Angus grid focuses on the strengths of Red Angus cattle verified through the FCCP "Yellow Tag" program.**



**"The Choice+ Grid has really worked for our cattle. 168 head of our Red Angus FCCP-tagged steers have averaged \$60.33/head in premiums."**

*Clay Anderson  
Anderson Land & Cattle Co. - Oberlin, KS*

**Red Angus Association of America**  
RedAngus.org | 940.387.3502

Tyson is a registered trademark of Tyson Foods, Inc.

# **WEDEL** **BEEF GENETICS**

Frank & Susan Wedel  
1012 W. County Rd. K  
Leoti, KS 67861  
(620) 375-2578  
wedelredangus.com



## **Annual Bull & Replacement Sale**

*Tuesday, March 14, 2017*

**160 Efficiency Tested Bulls** *[Red Angus - SimAngus - Char x Red Angus Hybrids]*

**150 Commercial Replacements** *[open & ready to breed]*

**110 Fall-Calving Commercial Bred Heifers**

*including bulls produced by Anderson Cattle Company, Oberlin, KS  
(developed and GrowSafe tested alongside Wedel bulls in Leoti, KS)*