

CAM_MY18_0065_V001



ToyotaCare
No Cost Service & Roadside

Let's go places.

Toyota drivers love to embrace new things and find new adventures. They just can't sit still. And proper vehicle maintenance is key to helping keep your Toyota safe, dependable and ready to explore. That's why we include a no cost maintenance plan with the purchase or lease of every new Toyota for 2 years or 25,000 miles, whichever comes first. 24-hour roadside assistance is also included for 2 years and unlimited miles. For all the details and exclusions, please call, visit online or stop by your local Toyota dealer today. Valid only in the continental U.S. and Alaska. Let's drive with confidence. Welcome to the ToyotaCare advantage.



toyota.com
1-800-GO-TOYOTA

©2017 Toyota Motor Sales, U.S.A., Inc.
04607 (6/17) 00616-18CAM
Litho in U.S.A. Options shown.

2018 Camry



CAM_MY18_0017_V001



Let's
Go
Places

CAM_MY18_0019_V001

Give in to your desires.

The all-new 2018 Toyota Camry is a joyride for the senses. The redesigned exterior is enhanced by a sleek, flowing shape. It's an evocative look that's less subtle and more seductive. XSE and SE models push the limits of the new, wider stance with unique catamaran-inspired accents and a black sport mesh grille that demand to be seen. Sporty yet elegant front and rear bumpers set your heart racing, while standard Toyota Safety Sense™ P (TSS-P)¹ helps provide peace of mind. Camry has undergone a total transformation, from a proven sedan to one that pushes the limits. Now you can go more places in complete confidence — and always arrive fashionably great.



Left to right: XSE V6 shown in Ruby Flare Pearl² with available Navigation Package;³ XLE V6 shown in Brownstone with available Navigation Package.
See numbered footnotes in Disclosures section.

CAM_MY18_0009_V004



XSE V6 interior shown in Cockpit Red leather trim with available Navigation Package.³

EXPAND YOUR HORIZONS

Slip into a premium space that puts a premium on your comfort. Brighten each day with Camry XSE's available panoramic glass roof with front power tilt/slide moonroof, which invites in more than twice the light of a traditional moonroof. A power-retractable sunshade helps you stay in control if things start to heat up. This distinctive styling extends to the interior's appealing materials and textures, from the available Cockpit Red leather trim to the upscale textured metal moldings and the ambient interior lighting. It's a practical and stylish cabin with an unrivaled attention to detail.



CAM_MY18_0015_V003

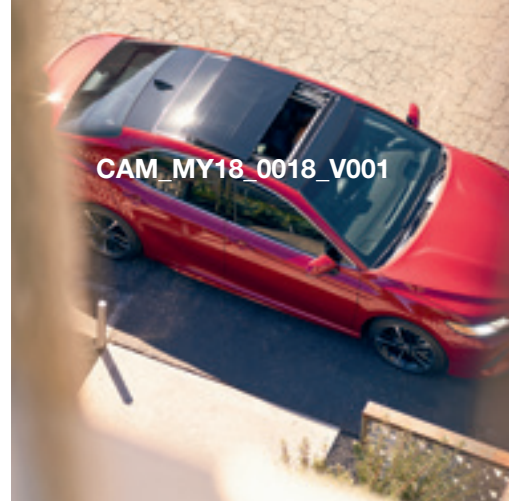


CAM_MY18_0001_V002



CAM_MY18_0014_V004

—
 "It delivers on everything Camry owners have come to expect...and adds to it jaw-dropping design, more-advanced tech, cutting-edge safety and stirring performance — raising it to an unparalleled level of excitement!"
 — Bob Carter, Executive Vice President, Sales, TMNA
 —



CAM_MY18_0018_V001



CAM_MY18_0011_V003

EXTERIOR STYLING

Leave a lasting impression.

Camry XSE's powerful stance and captivating style will announce your arrival with authority. The muscular shape is defined by a pleasing mix of sweeping curves and chiseled surfaces. Sport side rocker panels and the integrated rear spoiler emphasize the coiled stance and redirect airflow to enhance efficiency and performance. It's an irresistible symphony of flowing lines and sharp, unconstrained edges that always makes an impact.



CAM_MY18_0020_V001

19-IN. MACHINED-FINISH ALLOY WHEELS WITH BLACK-PAINTED ACCENTS

Add to the allure with the lustrous black hue found on Camry XSE's 19-in. alloy wheels. The deep color dramatically contrasts the exquisite machined finish of the V-shaped spokes. Low-profile 40-series tires complete the distinctive look while providing a precise, confidence-inspiring drive.



CAM_MY18_0021_V001

SMOKE-TINT LED HEADLIGHTS WITH LED DAYTIME RUNNING LIGHTS (DRL)

More efficient and powerful available LED headlights add a stylish touch, stretching outwardly from the thin upper grille. The XSE's LED headlights with smoke tint and fully integrated LED Daytime Running Lights (DRL) add an illuminating touch. This expressive look is highlighted by a design inspired by the symmetrical lines in the sand of a Japanese Zen garden.



CAM_MY18_0022_V001

LED TAILLIGHTS

Camry's available LED taillights feature an eye-catching organic shape. It's a powerful look that flows seamlessly into the rear bumper. Stylish lights like these are the perfect way to brighten any drive.



CAM_MY18_0023_V001

Left to right: XSE V6 shown in Wind Chill Pearl[®] and Midnight Black Metallic roof[®] with available Navigation Package[®]; XSE V6 shown in Ruby Flare Pearl[®] with available Navigation Package. See numbered footnotes in Disclosures section.



XSE V6 interior shown in Black leather trim with available Navigation Package.³
See numbered footnotes in Disclosures section.

DRIVER'S INTERIOR

Take a commanding view.

It's a space that's all about you with an inviting, wide-open sensation. Get behind the wheel and the driver-centric position envelops you. Thanks to the perfectly placed steering wheel controls, everything you want is right at your fingertips. The available 10-in. color Head-Up Display (HUD) projects important information such as your speed, turn-by-turn directions, and more, right onto the lower portion of the windshield. It helps you stay focused on the road ahead.

7-IN. COLOR MULTI-INFORMATION DISPLAY (MID)

The available 7-in. color Multi-Information Display presents turn-by-turn directions, safety info and alerts right where you want them. It will also display your current and average fuel economy, compass heading and audio presets.



CAM_MY18_0012_V002



CAM_MY18_0014_V003

8-IN. MULTIMEDIA TOUCH-SCREEN

Camry offers an available 8-in. multimedia touch-screen with intuitive pinch-and-zoom navigation controls for a familiar experience. The new Entune™ 3.0⁴ system speaks to your style with a customizable home screen and standard Entune™ 3.0 App Suite⁴ with available Toyota Connected Services. You'll even welcome longer trips, thanks to the Scout® GPS Link App⁵ with moving maps, and available 9-speaker, 800-watt Entune™ 3.0 Premium Audio with JBL® w/Clari-Fi.

A joyride for your senses.

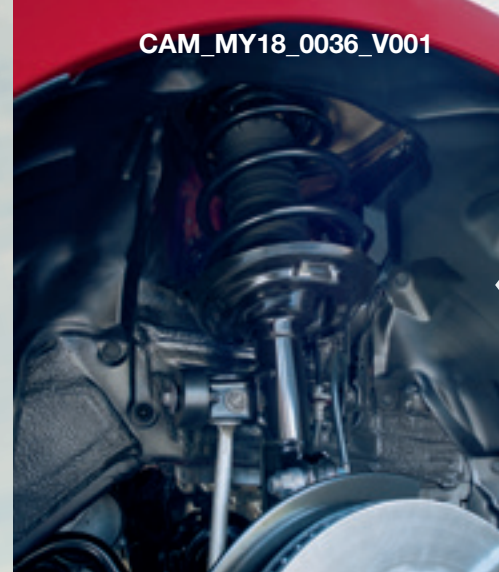
Indulge your sporty side with Camry's breathtaking performance. The light, strong body enhances both handling and ride quality. The lower, wider stance delivers a crisp, responsive feel and creates an optimal driving position. Choose between a new 3.5-liter V6 and an all-new 2.5-liter 4-cylinder gasoline engine, which comes paired to a new Direct Shift 8-Speed Automatic Transmission. When coupled with the enhanced suspension, they help Camry deliver an impressive drive without suppressing your comfort. It's time to take the long way — and celebrate every moment.

V6 AND 2.5L ENGINES

Camry offers a compelling choice of gasoline engines, the all-new 2.5-liter Dynamic Force 4-cylinder and a new 3.5-liter V6, each delivering a sophisticated blend of performance and efficiency. Both engines utilize the D-4S direct-injection system, which selects the optimal injection method based on driving conditions to pack a powerful punch with enhanced fuel economy to boot. It proves the rational choice can also be an exciting one.



CAM_MY18_0064_V001



CAM_MY18_0036_V001

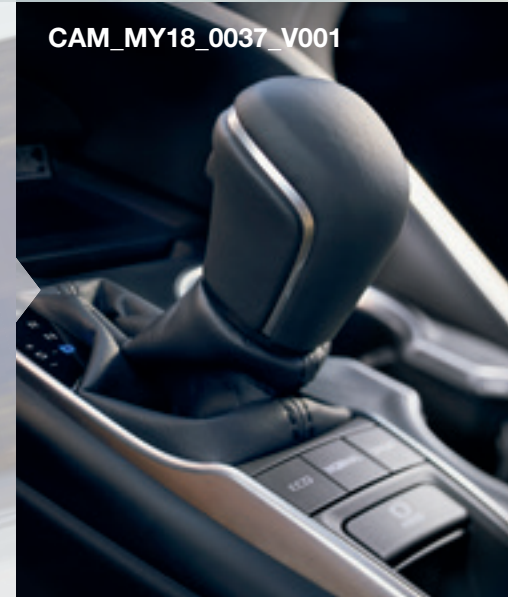
SUSPENSION

Enjoy the perfect harmony of a drive that's both relaxed and confident, thanks to Camry's new double-wishbone rear suspension. It delivers a smooth ride and sharp handling so you can take on any trip from crosstown to cross-country.

NEW DIRECT SHIFT 8-SPEED ELECTRONICALLY CONTROLLED AUTOMATIC TRANSMISSION WITH ECO, NORMAL AND SPORT MODES

Camry's newly developed Direct Shift 8-Speed Automatic Transmission improves acceleration from a stop, provides a smooth ride at highway speeds and helps enhance fuel efficiency. Three distinct available drive modes give you even more control. Sport Mode indulges your spirited side with a sharper acceleration feel, while ECO Mode adjusts throttle input to maximize your efficiency. Normal Mode blends fuel economy with performance. Thanks to this choice of drive modes, a perfectly tailored drive arrives with the push of a button.

CAM_MY18_0037_V001



Left to right: XSE V6 shown in Ruby Flare Pearl[®] with available Navigation Package;¹ XSE V6 shown in Wind Chill Pearl[®] and Midnight Black Metallic roof[®] with available Navigation Package.

See numbered footnotes in Disclosures section.



CAM_MY18_0038_V001

XSE V6 interior shown in Cockpit Red leather trim with available Navigation Package³

SPORTY INTERIOR

Inside, indulgence awaits.

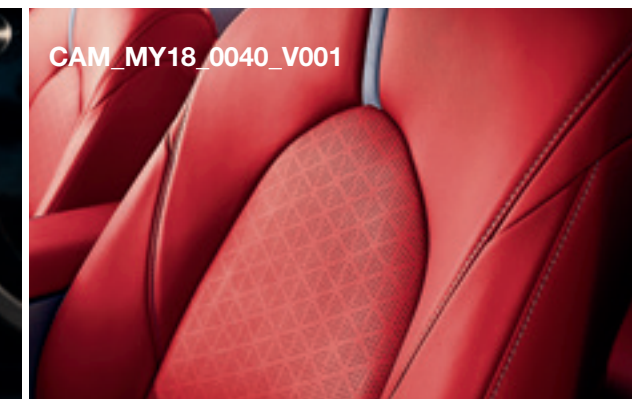
Camry's passenger cabin fits your needs and feeds your desires with pleasing finishes and textures. It features a meticulous blend of colors and materials, such as the vibrant look and feel of the available Cockpit Red leather-trimmed interior. Camry also offers the Smart Key System[®] with Push Button Start to complement your convenience. Available leather-trimmed 8-way power-adjustable driver's and front passenger seats, and a leather-trimmed steering wheel create an intimate, tactile connection with the road.



CAM_MY18_0039_V001

PADDLE SHIFTERS

When the drive takes a spirited turn, Camry's available steering wheel-mounted paddle shifters give you the power to shift gears manually for a more controlled experience. They make extremely fast shifts possible with a precise, responsive feel.



CAM_MY18_0040_V001

SEAT DETAILS

Camry's redesigned seats are distinctively shaped with available leather trim and contrast stitching. Such finely crafted details ensure your style never takes a back seat.



CAM_MY18_0041_V001

DUAL EXHAUST WITH QUAD CHROME TIPS

The available dual exhaust with quad chrome tips dishes out a powerful look, matched only by the sporty sound. It's sure to leave a lasting impression.

See numbered footnotes in Disclosures section.

INTERIOR CONVENIENCE

Enjoy a more connected drive.

Get inside a welcoming space that listens to your needs and speaks to your sense of style. Personalize Camry's Entune™ 3.0⁴ display with custom background colors and immerse yourself in the available ambient lighting. It creates the perfect mood for any drive. Camry also offers peace of mind with available Safety Connect™⁵'s⁷ enhanced 24/7 Roadside Assistance^{4,5} and available Service Connect's⁶ remote diagnostics linked directly to your local dealer. Standard turn-by-turn navigation and available embedded Dynamic Navigation³ help ensure that you'll get there with ease.



WI-FI CONNECT² POWERED BY VERIZON⁴

Never miss a connection with Camry's available Wi-Fi Connect Powered by Verizon. The Toyota-first system supports up to five devices, making Camry the hottest spot on the road. Add available Qi-compatible wireless smartphone charging⁸ and leave your wires and worries behind.



PREMIUM JBL[®] AUDIO

Specifically optimized for Camry's cabin, the available Entune™ 3.0⁴ Premium Audio with JBL[®] w/Clari-Fi system re-creates the deep, rich sound typically lost while streaming music. With 800 watts of peak power and nine speakers, including a subwoofer and separate tweeters, it has more than enough range to power your playlist. You'll drive soundly knowing Camry can carry your tunes.



ROOMINESS

Thanks to its all-new platform, Camry's seats are placed lower, creating a generous interior space. The rear seats even feature the same dynamic and supportive design as the front seats. Such thoughtful details put a premium on everyone's comfort.



See numbered footnotes in Disclosures section.

INNOVATIVE TECHNOLOGY



CAM_MY18_0042_V001

BIRD'S EYE VIEW CAMERA⁹ WITH PERIMETER SCAN

Camry's available Bird's Eye View Camera with Perimeter Scan uses front-, side- and rear-mounted cameras to display a panoramic overhead view. It helps you see more of your surroundings, so you can drive with confidence.



CAM_MY18_0043_V001

INTELLIGENT CLEARANCE SONAR¹⁰ WITH REAR CROSS-TRAFFIC BRAKING¹¹

Get in and out of the tightest spots with ease, thanks to Camry's available Intelligent Clearance Sonar with Rear Cross-Traffic Braking. This system is designed to warn you when it detects nearby obstacles, and if necessary, will reduce engine power and apply the brakes.



CAM_MY18_0045_V001

Watching out for you.

Out of sight, but never out of mind. Camry is on the lookout with its available Bird's Eye View Camera⁹ with Perimeter Scan. Available Intelligent Clearance Sonar (ICS)¹⁰ helps you navigate around hidden obstacles. Even if your Camry is out of sight, you can stay connected with available Remote Connect.¹¹ It helps you remotely monitor guest drivers, control interior temps and locate your Camry in a crowded lot. Innovative features like these provide another point of view to help make your drive safe for everyone.



CAM_MY18_0044_V001

XLE V6 shown in Brownstone with available Navigation Package.²
See numbered footnotes in Disclosures section.

CAM_MY18_0049_V001

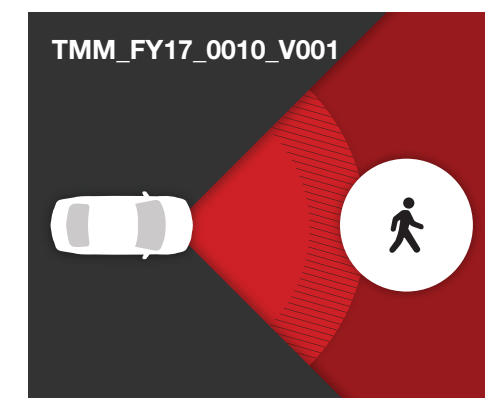


SE shown in Midnight Black Metallic with available Audio Package and power tilt/slide moonroof.

TOYOTA SAFETY SENSE™ (TSS)

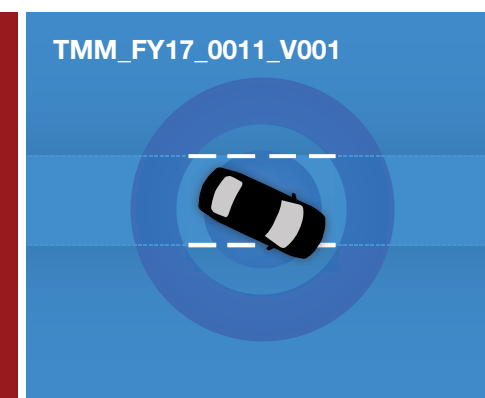
It's got your back. And sides. And front.

Camry's standard Toyota Safety Sense™ P (TSS-P)¹ is an active safety package that combines Pre-Collision System¹² with Pedestrian Detection¹³ (PCS w/PD), Lane Departure Alert with Steering Assist (LDA w/SA)¹⁴, Automatic High Beams (AHB)¹⁵ and Dynamic Radar Cruise Control (DRCC)³⁹ to assist you. TSS-P's comprehensive features create in-the-moment safety designed to help keep you safe under certain circumstances.



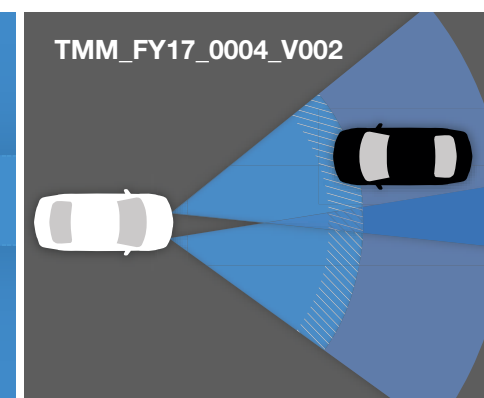
PRE-COLLISION SYSTEM¹² WITH PEDESTRIAN DETECTION¹³

Pre-Collision System with Pedestrian Detection helps keep the road safe by detecting a vehicle or a pedestrian in certain situations. By combining millimeter-wave radar with a camera capable of shape recognition, the system provides an audio/visual alert, warning you of a possible collision with a pedestrian under certain circumstances. If you don't react, the system is designed for automatic braking support to help mitigate the potential for a collision.



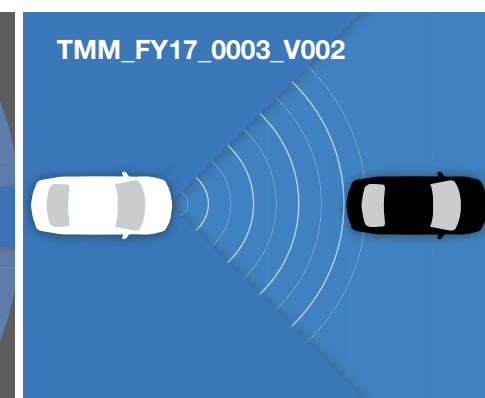
LANE DEPARTURE ALERT WITH STEERING ASSIST¹⁴

If an inadvertent lane departure is detected and the system can identify visible lane markings, the Lane Departure Alert system is designed to issue both an audible alert and visual warning on the MID screen. If the system determines that the driver is not taking corrective steering action, the Steering Assist function is designed to initiate and provide gentle corrective steering to help keep Camry in the lane.



AUTOMATIC HIGH BEAMS¹⁵

Camry enhances visibility and helps make nighttime driving safe. The Automatic High Beam system uses a camera to help detect oncoming vehicles as far away as 2000 feet and, depending on the circumstances, it is designed to automatically switch the high beams on and off, helping make it easier for other drivers on the road.



DYNAMIC RADAR CRUISE CONTROL³⁹

Camry's Dynamic Radar Cruise Control takes cruising to the next level. Using forward-sensing radar technology and an intelligent camera, the system is designed to detect the speed and distance of the vehicle traveling directly ahead of you and adjust your speed accordingly. It works in traffic, as well, helping you maintain a preset following distance, slowing when the preset distance shortens, then accelerating back to your original cruising speed when the road clears.

See numbered footnotes in Disclosures section.

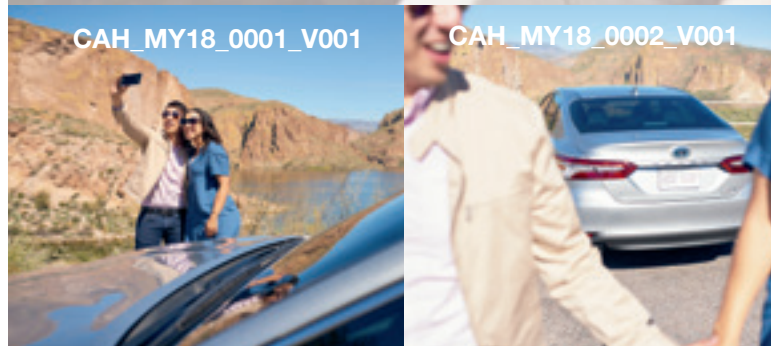
Good for all. Even better for you.

The transportation revolution continues. The powerful, stylish Camry Hybrid gives up nothing with its optimized fuel economy, advanced tech and a striking look that will leave you breathless. Its dependability has been refined for 11 years, and speaks to the reliability of Toyota's proven Hybrid Synergy Drive®.

Camry Hybrid's elevated efficiency arrives with a remarkably stunning drive, thanks to a revised hybrid system. The improved EV motor produces more torque and helps make acceleration even more responsive. Relocating the hybrid battery and employing the same trailing double wishbone as the traditional Camry helps Camry Hybrid conquer every twist and turn. It's an exciting drive that lets you do even more.

CAH_MY18_0001_V001

CAH_MY18_0002_V001



CAH_MY18_0003_V001

HYBRID

Hybrid XLE shown in Celestial Silver Metallic with available Audio Package.
See numbered footnotes in Disclosures section.

MPG

The improved design and performance of Camry Hybrid's all-new Dynamic Force 4-cylinder engine, along with a proven electric motor and smooth-shifting CVT, help Camry Hybrid deliver a remarkably efficient drive. It's the best of both worlds, blending a stirring drive and optimized fuel economy.

TMM_FY17_0002_V001

51^{city} / 53^{hwy}

UP TO AN EPA-EST. MPG¹⁷

ENERGY MONITOR

Tracking your efficiency is easy with the energy monitor. As driving conditions change, the monitor uses both the Entune™ 3.0⁴ display and available Head-Up Display (HUD) to show you how power is being routed to the drive wheels or how otherwise wasted energy is captured to charge the battery.

CAH_MY18_0004_V001

EV¹⁸/ECO/NORMAL/SPORT MODE

Camry Hybrid's new Sport Mode improves throttle response, while ECO Mode adjusts throttle input to maximize your efficiency. EV Mode enables electric driving to help reduce noise and emissions. More choices give you a more controlled drive.

CAH_MY18_0010_V001

CAH_MY18_0023_V001

Complete any journey in complete comfort.

Camry Hybrid's interior invites you to do more with a design that's both practical and stylish. Fine details, such as the LE's layered wood accent elements, can be found throughout the cabin. Personalize any trip with a choice of drive modes. ECO Mode maximizes fuel economy, while EV Mode¹⁸ enables electric driving. The energy monitor displays how the power is being delivered to the drive wheels. It's smart tech wrapped in a sensational package.

Hybrid XLE interior shown in Ash leather trim with available Audio Package.
See numbered footnotes in Disclosures section.

HYBRID INTERIOR

STANDARD SAFETY

CAM_MY18_0005_V002



Smart safety. Helping you drive with confidence.

Camry offers an available Blind Spot Monitor (BSM)¹⁹ with Rear Cross-Traffic Alert (RCTA)²⁰. They help you see more of what matters. Available Safety Connect²⁷ provides enhanced 24/7 Roadside Assistance⁴³ with the touch of a button and automatic collision notification. Camry even protects itself with an anti-theft alarm. It's a complete approach to vehicle safety, so you can drive with confidence.

BLIND SPOT MONITOR¹⁹ WITH REAR CROSS-TRAFFIC ALERT²⁰

The available Blind Spot Monitor warns you when a vehicle in the next lane enters Camry's blind spot on either side. Available Rear Cross-Traffic Alert works when Camry is in Reverse to help detect vehicles approaching from either side. If the system senses cross traffic, it warns you with side mirror indicators and a warning tone and, if necessary, is designed to apply the brakes.



CAM_MY18_0051_V001

10 airbags

TEN AIRBAGS³¹ STANDARD

Camry comes standard with an Advanced Airbag System with advanced dual-stage SRS driver and front passenger airbags, in addition to front and rear side curtain airbags. Ten airbags in all — all focused on your safety.

STAR SAFETY SYSTEMTM

Smart tech helps keep you safe. This standard comprehensive suite of six advanced safety features is designed to help keep you out of harm's way. The system includes enhanced Vehicle Stability Control (VSC)²², Traction Control (TRAC), Anti-lock Brake System (ABS), Electronic Brake-force Distribution (EBD), Brake Assist (BA)²³ and Smart Stop Technology[®] (SST)²⁴.



XSE V6 shown in Ruby Flare Pearl² with available Navigation Package³. See numbered footnotes in Disclosures section.

Soul-stirring design. Heart-racing performance.
It's time to captivate your senses.

CAM_MY18_0006_V002

Hybrid XLE shown in Celestial Silver Metallic with available Audio Package; XSE V6 shown in Ruby Flare Pearl[®] with available Navigation Package[®]

CAMRY MODELS

CAM_MY18_0114_V001



CAM_MY18_0071_V001



CAM_MY18_0072_V001



CAM_MY18_0073_V001



CAM_MY18_0074_V001



CAM_MY18_0075_V001



CAM_MY18_0076_V001

L

Available Fall 2017

Powertrain

- 2.5-Liter Dynamic Force 4-Cylinder Engine with 203 hp @ 6600 rpm
- 29 city/41 hwy/34 combined est. mpg¹⁷
- Direct Shift-8AT (8-Speed Electronically Controlled automatic Transmission)

Exterior Features

- Bi-LED combination headlights with auto on/off feature
- LED Daytime Running Lights (DRL) with on/off feature
- 16-in. steel wheels and P205/65R16 tires

Interior and Safety Features

- Toyota Safety Sense™ P (TSS-P)¹
- Integrated backup camera³⁰ with projected path
- Entune™ 3.0⁴ Audio with Connected Navigation⁵ and App Suite⁴
- 4.2-in. TFT Multi-Information Display
- Fabric-trimmed front seats with passenger-side seatback pocket; 6-way adjustable driver and front passenger seat
- Overhead console with maplights and sunglasses storage
- Hill Start Assist Control (HAC)²⁸

LE

Adds to or replaces features offered on L

Powertrain

- 2.5-Liter Dynamic Force 4-Cylinder Engine with 203 hp @ 6600 rpm
- 28 city/39 hwy/32 combined est. mpg¹⁷
- Direct Shift-8AT (8-Speed Electronically Controlled automatic Transmission)

Exterior Features

- 17-in. alloy wheels and P215/55R17 tires

Interior and Safety Features

- Fabric-trimmed front seats with passenger-side seatback pocket; 8-way power-adjustable driver's seat with power lumbar support; 6-way adjustable front passenger seat
- 60/40 split fold-down rear seat with center armrest with cup holders
- Anti-theft system with alarm

Options and Packages

- Power tilt/slide moonroof
- Convenience Package includes
 - Smart Key System⁶
 - HomeLink⁸⁽²⁹⁾ universal transceiver
 - Auto-dimming rearview mirror with compass
- Audio Package includes
 - Entune™ 3.0⁴ Audio Plus with Connected Navigation⁵ and App Suite⁴
 - Qi-compatible wireless smartphone charging⁹
 - Dual zone automatic climate control
- Blind Spot Monitor (BSM)¹⁹ with Rear Cross-Traffic Alert (RCTA)²⁰

XLE

Adds to or replaces features offered on LE

Powertrain

- 2.5-Liter Dynamic Force 4-Cylinder Engine with 203 hp @ 6600 rpm
- 22 city/39 hwy/26 combined est. mpg¹⁷
- Direct Shift-8AT (8-Speed Electronically Controlled automatic Transmission)

Exterior Features

- LED headlights with fully integrated LED Daytime Running Lights (DRL) with auto on/off feature
- LED taillights
- Bright metallic front grille
- Color-keyed heated power outside mirrors with turn signal and blind spot warning indicators¹⁹
- Color-keyed outside door handles with touch-sensor lock/unlock feature
- 18-in. chrome machined-finish alloy wheels and P235/45R18 tires
- Single exhaust with chrome finisher

Interior and Safety Features

- Blind Spot Monitor (BSM)¹⁹ with Rear Cross-Traffic Alert (RCTA)²⁰ and Intelligent Clearance Sonar (ICS)¹⁰ with Rear Cross-Traffic Braking (RCTB)¹¹
- Dual zone automatic climate control with air filter and rear-seat vents
- Integrated backup camera³⁰ with dynamic gridlines
- 7-in. TFT Multi-Information Display with customizable settings
- Leather-trimmed multi-stage heated front seats with seatback pockets; 8-way power-adjustable driver's seat with power lumbar support; 8-way power-adjustable front passenger seat with lumbar support
- Rear adjustable headrests
- Leather-trimmed tilt/telescopic 3-spoke steering wheel with audio, Multi-Information Display and *Bluetooth*⁸⁽²⁹⁾ hands-free phone controls
- 3-mode switch (ECO, Normal, Sport)
- Tiger Eye wood interior trim
- Smart Key System⁶ on front doors and trunk with Push Button Start
- Auto-dimming rearview mirror with compass
- HomeLink⁸⁽²⁹⁾ universal transceiver
- Three USB ports²⁷ (one 1.5V and two 2.1V)
- Electric Parking Brake (EPB) with Brake Hold

Options and Packages

- Panoramic glass roof with front power tilt/slide moonroof
- Audio Package includes
 - Entune™ 3.0⁴ Audio Plus with JBL® w/Clari-Fi, Connected Navigation⁵ and App Suite⁴
 - Qi-compatible wireless smartphone charging⁹
- Driver Assist Package includes
 - 10-in. color Head-Up Display (HUD)
 - Bird's Eye View Camera³ with Perimeter Scan

XLE V6

Adds to or replaces features offered on XLE

Powertrain

- 3.5-Liter V6 with 301 hp @ 6600 rpm
- 22 city/33 hwy/26 combined est. mpg¹⁷
- Direct Shift-8AT (8-Speed Electronically Controlled automatic Transmission)

Exterior Features

- Panoramic glass roof with front power tilt/slide moonroof
- Shark-fin antenna
- Dual exhaust with chrome finisher

Interior and Safety Features

- Entune™ 3.0⁴ Audio Plus with JBL® w/Clari-Fi, Connected Navigation⁵ and App Suite⁴ — includes 8-in. touch-screen, AM/FM CD player, MP3/WMA playback capability, nine speakers in nine locations, auxiliary audio jack, USB 2.0 port²⁷ with iPod⁸⁽³¹⁾ connectivity and control, voice recognition;³² hands-free phone capability and music streaming⁴ via *Bluetooth*⁸⁽²⁹⁾ wireless technology, Scout® GPS Link App⁵ with moving maps with 3-year complimentary trial, Siri® Eyes Free;³⁴ Google Voice control;²⁹ HD Radio™³⁵ Technology, Entune™ 3.0 App Suite⁴, SiriusXM® Satellite Radio³⁶ with 3-month complimentary SiriusXM All Access trial³⁷ and Gracenote® album cover art. Entune™ 3.0⁴ Toyota Connected Services — Safety Connect⁸⁽⁷⁾ with 3-year complimentary trial, Service Connect¹⁸ with 3-year complimentary trial, Remote Connect³³ with 6-month complimentary trial, Wi-Fi Connect Powered by Verizon™²⁵ with up to 2GB within 6-month complimentary trial. Access to Entune™ 3.0 App Suite⁴ is subscription-free. See toyota.com/entune for details.
- Qi-compatible wireless smartphone charging⁹
- 10-in. color Head-Up Display (HUD) with customizable settings, speedometer, navigation, shift position, compass, TSS-P¹ indicators, audio, phone, outside temperature and adjustable brightness
- Overhead console with maplights, HomeLink⁸⁽²⁹⁾ universal transceiver and Safety Connect⁸⁽⁷⁾ button
- Tiger Eye wood interior trim
- Dual sun visors with sliding extensions and illuminated vanity mirrors

Options and Packages

- Navigation Package³ includes
 - Entune™ 3.0⁴ Premium Audio with JBL® w/Clari-Fi, Dynamic Navigation³ and App Suite⁴
- Driver Assist Package includes
 - Bird's Eye View Camera³ with Perimeter Scan

SE

Adds to or replaces features offered on LE

Powertrain

- 2.5-Liter Dynamic Force 4-Cylinder Engine with 203 hp @ 6600 rpm
- 28 city/39 hwy/32 combined est. mpg¹⁷
- Direct Shift-8AT (8-Speed Electronically Controlled automatic Transmission)

Exterior Features

- Black front grille with sport mesh insert
- Color-keyed sport side rocker panels
- 18-in. black machined-finish alloy wheels and P235/45R18 tires
- Color-keyed rear spoiler
- Single exhaust with dual chrome tips

Interior and Safety Features

- Single-zone automatic climate control with air filter
- 4.2-in. TFT Multi-Information Display
- Sport SofTex®-trimmed front seats with fabric inserts, seatback pockets; 8-way power-adjustable driver's seat with power lumbar support; 6-way adjustable front passenger seat
- Leather-trimmed tilt/telescopic 3-spoke sport steering wheel with paddle shifters, audio, Multi-Information Display and *Bluetooth*⁸⁽²⁹⁾ hands-free controls
- Embossed mesh interior trim
- Tire Pressure Monitor System (TPMS)³⁸ with direct pressure readout

Options and Packages

- Power tilt/slide moonroof
- Convenience Package includes
 - Smart Key System⁶
 - HomeLink⁸⁽²⁹⁾ universal transceiver
 - Auto-dimming rearview mirror with compass
- Audio Package includes
 - Entune™ 3.0⁴ Audio Plus with Connected Navigation⁵ and App Suite⁴
 - Qi-compatible wireless smartphone charging⁹
 - Dual zone automatic climate control
- Blind Spot Monitor (BSM)¹⁹ with Rear Cross-Traffic Alert (RCTA)²⁰

XSE

Adds to or replaces features offered on SE

Powertrain

- 2.5-Liter Dynamic Force 4-Cylinder Engine with 206 hp @ 6600 rpm
- 22 city/32 hwy/26 combined est. mpg¹⁷
- Direct Shift-8AT (8-Speed Electronically Controlled automatic Transmission)

Exterior Features

- LED headlights with smoke tint and fully integrated LED Daytime Running Lights (DRL) with auto on/off feature
- LED taillights with smoke tint
- Gloss-black front grille with sport mesh insert
- Color-keyed heated power outside mirrors with turn signal and blind spot warning indicators¹⁹
- Color-keyed outside door handles with touch-sensor lock/unlock feature
- 19-in. black machined-finish alloy wheels and P235/40R19 tires
- Dual exhaust with quad chrome tips

Interior and Safety Features

- Blind Spot Monitor (BSM)¹⁹ with Rear Cross-Traffic Alert (RCTA)²⁰ and Intelligent Clearance Sonar (ICS)¹⁰ with Rear Cross-Traffic Braking (RCTB)¹¹
- Dual zone automatic climate control with air filter and rear-seat vents
- Integrated backup camera³⁰ with dynamic gridlines
- 7-in. TFT Multi-Information Display with customizable settings
- Leather-trimmed multi-stage heated front seats with seatback pockets; 8-way power-adjustable driver's seat with power lumbar support; 8-way power-adjustable front passenger seat with lumbar support
- Rear adjustable headrests
- 3-mode switch (ECO, Normal, Sport)
- Textured metal interior trim
- Smart Key System⁶ on front doors and trunk with Push Button Start
- Three USB ports²⁷ (one 1.5V and two 2.1V)
- Electric Parking Brake (EPB) with Brake Hold

Options and Packages

- Panoramic glass roof with front power tilt/slide moonroof
- Two-tone Midnight Black Metallic roof² and rear spoiler
- Audio Package includes
 - Entune™ 3.0⁴ Audio Plus with JBL® w/Clari-Fi, Connected Navigation⁵ and App Suite⁴
 - Qi-compatible wireless smartphone charging⁹
- Driver Assist Package includes
 - 10-in. color Head-Up Display (HUD)
 - Bird's Eye View Camera³ with Perimeter Scan

XSE V6

Adds to or replaces features offered on XSE

Powertrain

- 3.5-Liter V6 with 301 hp @ 6600 rpm
- 22 city/32 hwy/26 combined est. mpg¹⁷
- Direct Shift-8AT (8-Speed Electronically Controlled automatic Transmission)

Exterior Features

- Panoramic glass roof with front power tilt/slide moonroof
- Shark-fin antenna

Interior and Safety Features

- Entune™ 3.0⁴ Audio Plus with JBL® w/Clari-Fi, Connected Navigation⁵ and App Suite⁴ — includes 8-in. touch-screen, AM/FM CD player, MP3/WMA playback capability, nine speakers in nine locations, auxiliary audio jack, USB 2.0 port²⁷ with iPod⁸⁽³¹⁾ connectivity and control, voice recognition;³² hands-free phone capability and music streaming⁴ via *Bluetooth*⁸⁽²⁹⁾ wireless technology, Scout® GPS Link App⁵ with moving maps with 3-year complimentary trial, Siri® Eyes Free;³⁴ Google Voice control;²⁹ HD Radio™³⁵ Technology, Entune™ 3.0 App Suite⁴, SiriusXM® Satellite Radio³⁶ with 3-month complimentary SiriusXM All Access trial³⁷ and Gracenote® album cover art. Entune™ 3.0⁴ Toyota Connected Services — Safety Connect⁸⁽⁷⁾ with 3-year complimentary trial, Service Connect¹⁸ with 3-year complimentary trial, Remote Connect³³ with 6-month complimentary trial, Wi-Fi Connect Powered by Verizon™²⁵ with up to 2GB within 6-month complimentary trial. Access to Entune™ 3.0 App Suite⁴ is subscription-free. See toyota.com/entune for details.
- Qi-compatible wireless smartphone charging⁹
- 10-in. color Head-Up Display (HUD) with customizable settings, speedometer, navigation, shift position, compass, TSS-P¹ indicators, audio, phone, outside temperature and adjustable brightness
- Overhead console with maplights, HomeLink⁸⁽²⁹⁾ universal transceiver and Safety Connect⁸⁽⁷⁾ button
- Dual sun visors with sliding extensions and illuminated vanity mirrors

Options and Packages

- Two-tone Midnight Black Metallic roof² and rear spoiler
- Navigation Package³ includes
 - Entune™ 3.0⁴ Premium Audio with JBL® w/Clari-Fi, Dynamic Navigation³ and App Suite⁴
- Driver Assist Package includes
 - Bird's Eye View Camera³ with Perimeter Scan

See numbered footnotes in Disclosures section.



CAH_MY18_0016_V001

Hybrid LE

Powertrain

- Hybrid: 2.5-Liter Dynamic Force 4-Cylinder Engine
- Hybrid system net power: 208 hp (155 kW)
- 51 city/53 hwy/52 combined est. mpg¹⁷
- Electronically controlled Continuously Variable Transmission (ECVT)

Exterior Features

- Bi-LED combination headlights with auto on/off feature
- LED Daytime Running Lights (DRL) with on/off feature
- Black front grille
- 16-in. steel wheels and P205/65R16 tires
- Acoustic noise-reducing front windshield

Interior and Safety Features

- Toyota Safety Sense™ P (TSS-P)¹
- Dual zone automatic climate control with air filter, electric compressor and humidity sensor
- Entune™ 3.0⁴ Audio with Connected Navigation⁵ and App Suite⁴
- Integrated backup camera³⁰ with projected path
- 4.2-in. TFT Multi-Information Display
- Fabric-trimmed heated front seats with seatback pockets; 8-way power-adjustable driver's seat with power lumbar support; 6-way adjustable front passenger seat
- 60/40 split fold-down rear seat with center armrest with cup holders
- Tilt/telescopic 3-spoke steering wheel with audio, Multi-Information Display and *Bluetooth*^{®26} hands-free phone controls
- 4-mode switch (EV,¹⁸ ECO, Normal and Sport)
- Layered wood interior trim
- Smart Key System⁶ on front doors and trunk with Push Button Start
- Power windows with 4-window auto up/down, jam protection and retained-power features
- Power door locks with automatic lockup feature
- Electric Parking Brake (EPB) with Brake Hold
- Ten airbags²¹
- Hill Start Assist Control (HAC)²⁸

Options and Packages

- Power tilt/slide moonroof
- Convenience Package includes
 - HomeLink^{®29} universal transceiver
 - Auto-dimming rearview mirror with compass
- Audio Package includes
 - Entune™ 3.0⁴ Audio Plus with Connected Navigation⁵ and App Suite⁴
 - Qi-compatible wireless smartphone charging⁸
- Blind Spot Monitor (BSM)¹⁹ with Rear Cross-Traffic Alert (RCTA)²⁰



CAH_MY18_0018_V001

Hybrid SE

Adds to or replaces features offered on Hybrid LE

Powertrain

- Hybrid: 2.5-Liter Dynamic Force 4-Cylinder Engine
- Hybrid system net power: 208 hp (155 kW)
- 44 city/47 hwy/46 combined est. mpg¹⁷
- Electronically controlled Continuously Variable Transmission (ECVT)

Exterior Features

- Black front grille with sport mesh insert
- Color-keyed sport side rocker panels
- 18-in. black machined-finish alloy wheels and P235/45R18 tires
- Color-keyed rear spoiler
- Single exhaust with dual chrome tips

Interior and Safety Features

- Sport SofTex[®]-trimmed heated front seats with fabric inserts, seatback pockets; 8-way power-adjustable driver's seat with power lumbar support; 6-way adjustable front passenger seat
- Leather-trimmed tilt/telescopic 3-spoke sport steering wheel with paddle shifters, audio, Multi-Information Display and *Bluetooth*^{®26} hands-free phone controls
- Embossed mesh interior trim

Options and Packages

- Power tilt/slide moonroof
- Convenience Package includes
 - HomeLink^{®29} universal transceiver
 - Auto-dimming rearview mirror with compass
- Audio Package includes
 - Entune™ 3.0⁴ Audio Plus with Connected Navigation⁵ and App Suite⁴
 - Qi-compatible wireless smartphone charging⁸
- Blind Spot Monitor (BSM)¹⁹ with Rear Cross-Traffic Alert (RCTA)²⁰



CAH_MY18_0017_V001

Hybrid XLE

Adds to or replaces features offered on Hybrid LE

Powertrain

- Hybrid: 2.5-Liter Dynamic Force 4-Cylinder Engine
- Hybrid system net power: 208 hp (155 kW)
- 44 city/47 hwy/46 combined est. mpg¹⁷
- Electronically controlled Continuously Variable Transmission (ECVT)

Exterior Features

- LED headlights with fully integrated LED Daytime Running Lights (DRL) with auto on/off feature
- LED taillights
- Bright metallic front grille
- Color-keyed heated power outside mirrors with turn signal and blind spot warning indicators¹⁹
- 18-in. chrome machined-finish alloy wheels and P235/45R18 tires
- Single exhaust with chrome finisher

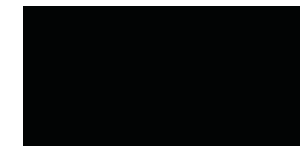
Interior and Safety Features

- Blind Spot Monitor (BSM)¹⁹ with Rear Cross-Traffic Alert (RCTA)²⁰ and Intelligent Clearance Sonar (ICS)¹⁹ with Rear Cross-Traffic Braking (RCTB)¹¹
- Dual zone automatic climate control with air filter, electric compressor, humidity sensor and rear-seat vents
- Integrated backup camera³⁰ with dynamic gridlines
- 7-in. TFT Multi-Information Display with customizable settings
- Leather-trimmed multi-stage heated front seats with seatback pockets; 8-way power-adjustable driver's seat with power lumbar support; 8-way power-adjustable front passenger seat with lumbar support
- Leather-trimmed tilt/telescopic 3-spoke steering wheel with audio, Multi-Information Display and *Bluetooth*^{®26} hands-free phone controls
- 10-in. color Head-Up Display (HUD) with customizable settings, speedometer, navigation, shift position, compass, TSS-P¹ indicators, audio, phone, outside temperature, Hybrid System Indicator, and adjustable brightness
- Tiger Eye wood interior trim
- Auto-dimming rearview mirror with compass
- Three USB ports²⁷ (one 1.5V and two 2.1V)

Options and Packages

- Power tilt/slide moonroof
- Audio Package includes
 - Entune™ 3.0⁴ Audio Plus with JBL[®] w/Clari-Fi, Connected Navigation⁵ and App Suite⁴
 - Qi-compatible wireless smartphone charging⁸
- Driver Assist Package includes
 - Bird's Eye View Camera³ with Perimeter Scan
- Adaptive Headlights

Color



Midnight Black Metallic



Blue Crush Metallic



Blue Streak Metallic



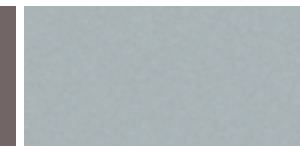
Galactic Aqua Mica

Ruby Flare Pearl²

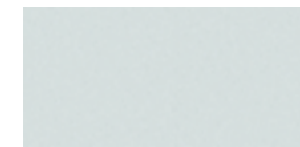
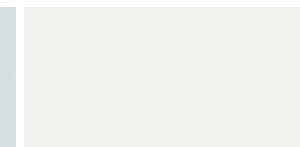
Brownstone



Predawn Gray Mica



Celestial Silver Metallic

Wind Chill Pearl²

Super White

Available Midnight Black Metallic roof² and rear spoiler

CAH_MY18_0077_V001



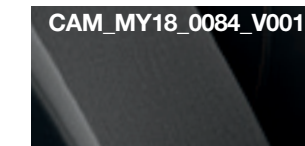
Blue Streak Metallic



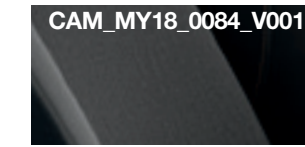
Celestial Silver Metallic

Wind Chill Pearl²

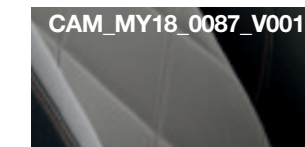
Trim



L fabric shown in Ash



LE and Hybrid LE fabric shown in Ash



XLE, XLE V6 and Hybrid XLE leather trim shown in Ash



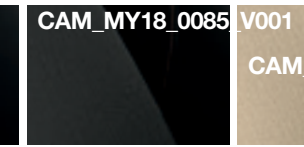
SE and Hybrid SE fabric shown in Black



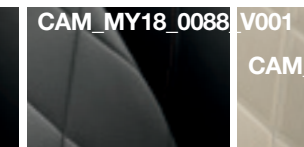
XSE and XSE V6 leather trim shown in Black



Black



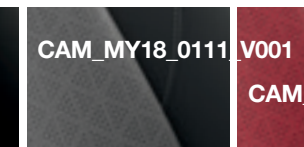
Macadamia



Black



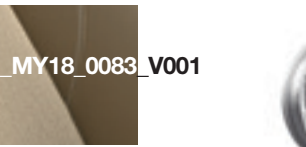
Ash



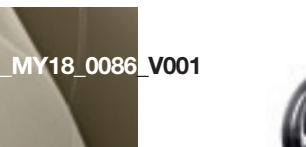
Ash



Macadamia



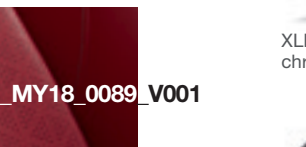
Macadamia



Macadamia



Ash



Cockpit Red

Wheels

CAM_MY18_0066_V001



L and Hybrid LE 16-in. steel wheel

CAM_MY18_0067_V001



LE 17-in. alloy wheel

CAM_MY18_0068_V001



SE and Hybrid SE 18-in. black machined-finish alloy wheel

CAM_MY18_0069_V001



XLE, XLE V6 and Hybrid XLE 18-in. chrome machined-finish alloy wheel

CAM_MY18_0070_V001



XSE and XSE V6 19-in. black machined-finish alloy wheel

ACCESSORIES

The 2018 Camry is one bold choice for the road, and it deserves some bold accessories. This is a great way to add extra personality to your Camry. Not every accessory is available in your area, so for a complete list of accessories, go to toyota.com/camry.

All-weather floor liners⁴⁰
Cargo tote⁴¹
Cargo tray
Carpet floor mats⁴⁰
Carpet trunk mat

Coin holder/ashtray cup
Color-keyed rear spoiler
Door edge guards
Doorsill protectors
Emergency kit

First aid kit
Hideaway cargo net⁴¹
Illuminated doorsills
Lower rocker appliqué
Mudguards

Paint protection film⁴²
Rear bumper appliqué (Clear on LE/XLE;
Black on SE/XSE)
Universal tablet holder



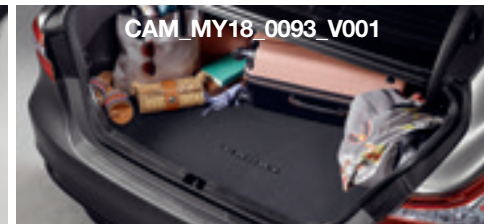
All-weather floor liners⁴⁰



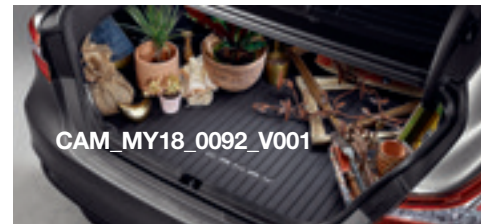
Cargo tote⁴¹



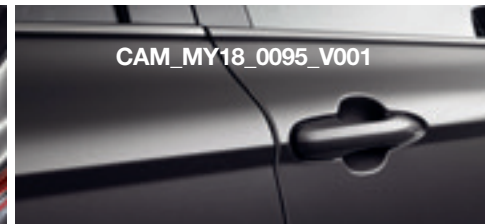
Rear bumper appliqué (Clear)



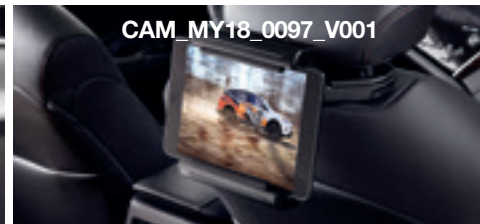
Carpet trunk mat



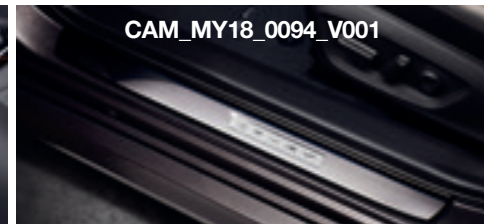
Cargo tray



Door edge guards



Universal tablet holder



Illuminated doorsills

WARRANTIES

Every Toyota Car, Truck and SUV is built to exceptional standards. And that's not idle boasting. We back it up with these Limited Warranty Coverages:

Basic: 36 months/36,000 miles (all components other than normal wear and maintenance items).

Hybrid-Related Component Coverage: Hybrid-related components, including the HV battery, battery control module, hybrid control module and inverter with converter, are covered for 8 years/100,000 miles. The HV battery may have longer coverage under emissions warranty. Refer to applicable *Warranty and Maintenance Guide* for details.

Powertrain: 60 months/60,000 miles (engine, transmission/transaxle, drive system, seatbelts and airbags).

Rust-Through: 60 months/unlimited miles (corrosion perforation of sheet metal).

Emissions: Coverages vary under Federal and California regulations. Refer to applicable *Warranty and Maintenance Guide* for details.

Accessories: For Genuine Toyota Accessories purchased at the time of the new vehicle purchase, the Toyota Accessory Warranty coverage is in effect for 36 months/36,000 miles from the vehicle's in-service date, which is the same coverage as the Toyota New Vehicle Limited Warranty.

For Genuine Toyota Accessories purchased after the new vehicle purchase the coverage is 12 months, regardless of mileage, from the date the accessory was installed on the vehicle, or the remainder of any applicable new vehicle warranty, whichever provides greater coverage.

You may be eligible for transportation assistance if it's necessary that your vehicle be kept overnight for repairs covered under warranty. Please see your authorized Toyota dealership for further details.

For complete details about Toyota's warranties, please visit www.toyota.com, refer to the applicable *Warranty and Maintenance Guide* or see your Toyota dealer.

CARS BUILT FOR THE WAY YOU LIVE

At Toyota, we build cars for how you live. From building advanced safety features designed to help prevent crashes to driving cross-country to understand how we can make your driving experience better, our work starts with understanding your needs. Building cars for how you live also means thinking about tomorrow — from fuel efficiency and environmental innovations, to things beyond cars, like a bicycle that you can control with your mind. And because what we learn building cars can help improve lives in other places, we do things like help communities rebuild their homes quickly after a disaster and work with soup kitchens to help them serve more people faster. Toyota. Built for how you live. Together we are going places.

DISCLOSURES

1. Drivers are responsible for their own safe driving. Always pay attention to your surroundings and drive safely. Depending on the conditions of roads, weather and the vehicle, the system(s) may not work as intended. See *Owner's Manual* for additional limitations and details. 2. Extra-cost color. 3. Availability and accuracy of the information provided by the Dynamic Navigation system is dependent upon many factors. Use common sense when relying on information provided. Services and programming subject to change. Services not available in every city or roadway. Subscription required after end of 3-year complimentary service. See *Owner's Manual* for details. 4. Apps/services vary by phone/carrier; functionality depends on many factors. Select apps use large amounts of data; you are responsible for charges. Apps and services subject to change. See toyota.com/entune for details. 5. Be sure to obey traffic regulations and maintain awareness of road and traffic conditions at all times. Apps/services vary by phone/carrier; functionality depends on many factors. Select apps use large amounts of data; you are responsible for charges. Apps and services subject to change. Availability and accuracy of the information provided by Scout® GPS Link is dependent upon many factors. Use common sense when relying on information provided. Services and programming subject to change. Services not available in every city or roadway. See toyota.com/entune for details. Scout® is a registered trademark of Telenav, Inc. 6. The Smart Key System may interfere with some pacemakers or cardiac defibrillators. If you have one of these medical devices, please talk to your doctor to see if you should deactivate this system. 7. Contact with the response center may not be available in all areas. Service Agreement required. A variety of subscription terms available; charges will vary. See toyota.com for details. 8. Qi wireless charging may not be compatible with all mobile phones, MP3/WMA players and like models. When using the wireless charging system, avoid placing metal objects between the wireless charger and the mobile device when charging is active. Doing so may cause metal objects to become hot and could cause burns. 9. The Bird's-Eye-View Camera does not provide a comprehensive view of the area surrounding the vehicle. You should also look around outside your vehicle and use your mirrors to confirm surrounding clearance. Environmental conditions may limit effectiveness and view may become obscured. See *Owner's Manual* for additional limitations and details. 10. Intelligent Clearance Sonar (ICS) is designed to assist drivers in avoiding potential collisions at speeds of 9 mph or less. Certain vehicle and environmental factors, including an object's shape and composition, may affect the ability of the ICS to detect it. Always look around outside the vehicle and use mirrors to confirm clearance. See *Owner's Manual* for additional limitations and details. 11. Rear Cross-Traffic Braking is intended to assist the driver, but it is the driver's responsibility to be aware of the vehicle's surroundings. The system cannot prevent all collisions, and performance is dependent on road, weather and vehicle conditions. See *Owner's Manual* for details. 12. The TSS Pre-Collision System is designed to help avoid or reduce the crash speed and damage in certain frontal collisions only. It is not a substitute for safe and attentive driving. System effectiveness is dependent on road, weather and vehicle conditions. See *Owner's Manual* for additional limitations and details. 13. The Pedestrian Detection system is designed to detect a pedestrian ahead of the vehicle, determine if impact is imminent and help reduce impact speed. It is not a substitute for safe and attentive driving. System effectiveness depends on many factors, such as speed, size and position of pedestrians, and weather, light and road conditions. See *Owner's Manual* for additional limitations and details. 14. Lane Departure Alert with Steering Assist is designed to read lane markers under certain conditions. It provides a visual and audible alert, and slight steering force when lane departure is detected. It is not a collision-avoidance system or a substitute for safe and attentive driving. Effectiveness is dependent on road, weather and vehicle conditions. See *Owner's Manual* for additional limitations and details. 15. Automatic High Beams operate at speeds above 25 mph. Factors such as a dirty windshield, weather, lighting and terrain limit effectiveness, requiring the driver to manually operate the high beams. See *Owner's Manual* for additional limitations and details. 16. Information provided is based on the last time data was collected from the vehicle and may not be up to date. System functionality depends on vehicle connectivity. 17. 2018 EPA-estimated mileage. Actual mileage will vary. 18. CAUTION! When driving a hybrid vehicle, pay special attention to the area around the vehicle. Because there is little vehicle noise in EV Mode, pedestrians, people riding bicycles or other people and vehicles in the area may not be aware of the vehicle starting off or approaching them, so take extra care while driving. EV Mode works under certain conditions at low speeds for up to one-half mile. See *Owner's Manual* for details. 19. Do not rely exclusively on the Blind Spot Monitor. Always look over your shoulder and use your turn signal. There are limitations to the function, detection and range of the monitor. See *Owner's Manual* for additional limitations and details. 20. Do not rely exclusively on the Rear Cross-Traffic Alert system. Always look over your shoulder and use your mirrors to confirm rear clearance. There are limitations to the function, detection and range of the system. See *Owner's Manual* for additional limitations and details. 21. All the airbag systems are Supplemental Restraint Systems. All airbags (if installed) are designed to inflate only under certain conditions and in certain types of severe collisions. To decrease the risk of injury from an inflating airbag, always wear seatbelts and sit upright in the middle of the seat as far back as possible. Do not put objects in front of an airbag or around the seatback. Do not use a rearward-facing child seat in any front passenger seat. See *Owner's Manual* for further information/warnings. 22. Vehicle Stability Control is an electronic system designed to help the driver maintain vehicle control under adverse conditions. It is not a substitute for safe and attentive driving practices. Factors including speed, road conditions, weather and driver steering input can all affect whether VSC will be effective in preventing a loss of control. See *Owner's Manual* for additional limitations and details. 23. Brake Assist is designed to help the driver take full advantage of the benefits of ABS. It is not a substitute for safe driving practices. Braking effectiveness also depends on proper vehicle maintenance, and tire and road conditions. See *Owner's Manual* for additional limitations and details. 24. Smart Stop Technology® operates only in the event of certain contemporaneous brake and accelerator pedal applications. When engaged, the system will reduce power to help the brakes bring the vehicle to a stop. Factors including speed, road conditions and driver input can all impact stopping distance. Smart Stop Technology® is not a substitute for safe and attentive driving and does not guarantee instant stopping. See *Owner's Manual* for details. 25. Wi-Fi Connect is available on select 2018 and newer Toyota vehicles. Visit toyota.com for vehicle availability. Verizon Wireless is the network provider for Wi-Fi Connect, which uses Verizon's 4G LTE network to transmit data. Data usage applies. Coverage not available everywhere; see vzw.com. See verizonwireless.com/bestnetwork for details. LTE is a trademark of ETSI. Other terms apply. Up to 5 devices can be supported using in-vehicle connectivity. Verizon Wireless data subscription required upon end of 6-month trial period or use of 2 GB data (whichever comes first). Use of Wi-Fi Connect subject to Verizon Wireless' Customer Agreement (verizonwireless.com/legal/notices/customer-agreement/), Privacy Policy (verizon.com/about/privacy/privacy-policy-summary), and data use policies (verizonwireless.com/support/vz-email-legal/). 26. The Bluetooth® word mark and logos are registered trademarks owned by Bluetooth SIG, Inc., and any use of such marks by Toyota is under license. A compatible Bluetooth®-enabled phone must first be paired. Phone performance depends on software, coverage and carrier. 27. May not be compatible with all mobile phones, MP3/WMA players and like models. 28. Google Voice control is available on select smartphones. Functionality depends on many factors. Some Google Voice functions and commands are not accessible while driving. Data charges will apply. See google.com and phone carrier for details. 29. HomeLink® and the HomeLink® house icon are registered trademarks of Genx Corporation. 30. The backup camera does not provide a comprehensive view of the rear area of the vehicle. You should also look around outside your vehicle and use your mirrors to confirm rearward clearance. Environmental conditions may limit effectiveness and view may become obscured. See *Owner's Manual* for additional limitations and details. 31. iPod® and iPhone® are registered trademarks of Apple Inc. All rights reserved. 32. Advanced voice recognition capabilities vary by head unit. 33. Use only if aware of circumstances surrounding vehicle and it is legal and safe to do so (e.g., car uncovered in open area, no people or pets in or nearby). If vehicle has not been driven for a week, services will not be available until next time vehicle is started. Functionality depends on many factors, such as vehicle and smartphone connectivity. Registration and app download are required. Must have an active Service Connect subscription. Subscription purchase required after 6-month trial. See usage precautions, service limitations and *Owner's Manual* for details. 34. Always drive safely, obey traffic laws and focus on the road while driving. Siri® is available on select iPhone®/iPad® models and requires Internet access. Siri® is not available in all languages or all areas and features vary by area. Some Siri® functionality and commands are not accessible in the vehicle. Data charges may apply. See apple.com and phone carrier for details. Siri® is a registered trademark of Apple Inc. 35. HD Radio™ Technology manufactured under license from iBiquity Digital Corporation U.S. and Foreign Patents. HD Radio™ and the HD, HD Radio, and "Arc" logos are proprietary trademarks of iBiquity Digital Corp. 36. SiriusXM audio services require a subscription sold separately, or as a package, by Sirius XM Radio Inc. If you decide to continue service after your trial, the subscription plan you choose will automatically renew thereafter and you will be charged according to your chosen payment method at then-current rates. Fees and taxes apply. To cancel you must call SiriusXM at 1-866-635-2349. See SiriusXM Customer Agreement for complete terms at www.siriusxm.com. All fees and programming subject to change. Not all vehicles or devices are capable of receiving all services offered by SiriusXM. Current information and features may not be available in all locations, or on all receivers. ©2017 Sirius XM Radio Inc. Sirius, XM, SiriusXM and all related marks and logos are trademarks of Sirius XM Radio Inc. 37. Trial length and service availability may vary by model, model year or trim. 38. The Toyota Tire Pressure Monitor alerts the driver when tire pressure is critically low. For optimal tire wear and performance, tire pressure should be checked regularly with a gauge; do not rely solely on the monitor system. See *Owner's Manual* for details. 39. Dynamic Radar Cruise Control is designed to assist the driver and is not a substitute for safe and attentive driving practices. System effectiveness is dependent on road, weather and traffic conditions. See *Owner's Manual* for additional limitations and details. 40. This floor mat was designed specifically for use in your model and model year vehicle and SHOULD NOT be used in any other vehicle. To avoid potential interference with pedal operation, each mat must be secured with its fasteners. Do not install a floor mat on top of an existing floor mat. 41. Cargo and load capacity limited by weight and distribution. 42. The Toyota Genuine Accessory Warranty will only apply when the installation is performed by a trained Toyota-approved installer. Please see dealer for details. 43. Roadside Assistance coverage is 2 years unlimited mileage. See Toyota Dealer for details and exclusions. Valid only in the Continental U.S. and Alaska.

Toyota strives to build vehicles to match customer interest and thus they typically are built with popular options and option packages. Not all options/packages are available separately and some may not be available in all regions of the country. See toyota.com for information about options/packages commonly available in your area. If you would prefer a vehicle without any or with different options, contact your dealer to check for current availability or the possibility of placing a special order.

Some vehicles are shown with available equipment. Seatbelts should be worn at all times. For details on vehicle specifications, standard features and available equipment in your area, contact your Toyota dealer. A vehicle with particular equipment may not be available at the dealership. Ask your Toyota dealer to help locate a specifically equipped vehicle. All information presented herein is based on data available at the time of printing, is subject to change without notice and pertains specifically to mainland U.S.A. vehicles only. Prototypes shown. Actual production vehicles will vary.

FOCUS ON SUSTAINABILITY

Toyota encourages their partners to embrace environmentally responsible business practices. Toyota brochures use paper from well-managed forests, as certified by FSC® (Forest Stewardship Council®) chain-of-custody guidelines. The electricity used to manufacture this paper was generated by the paper mill's own Green-e® certified renewable energy sources. Wind-powered electricity was used to print some brochures through purchased REC (renewable energy credits), also Green-e® certified. 10% post-consumer recycled fiber (PCRf) in all Opus sheets products.



For Toyota Mobility program details, go to www.toyota.com/mobility or call the Toyota Customer Assistance Center at 1-800-331-4331

