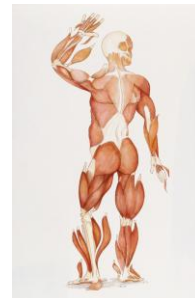
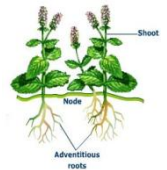
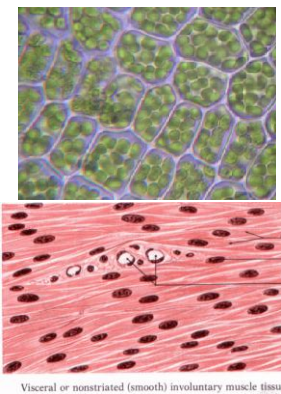
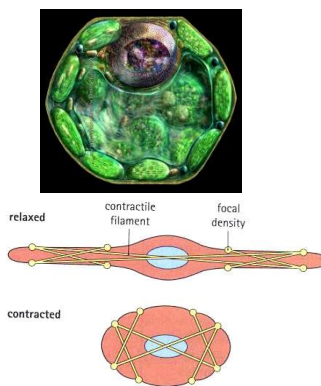


Name _____ Date _____ Period _____

Levels of Organization Notes

1. Levels of organization

1. – basic _____ of structure and function for _____ things.
2. – groups of _____ cells that perform a specific function.
3. – group of different _____ working together to perform a certain task
4. – group of _____ working together
5. – combines cells, tissues, organs and systems



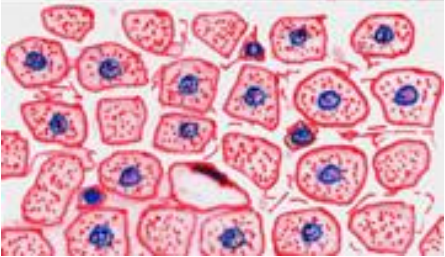
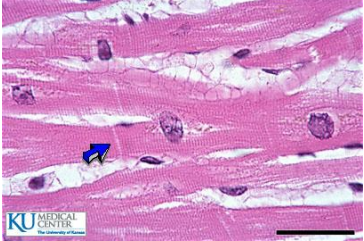
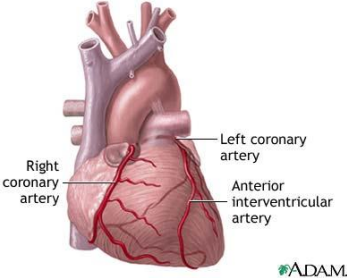
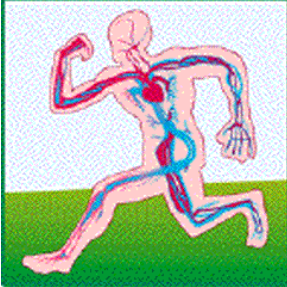
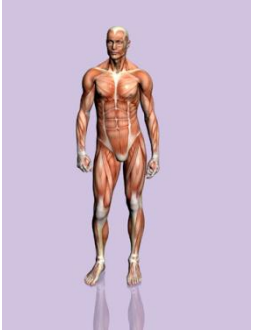
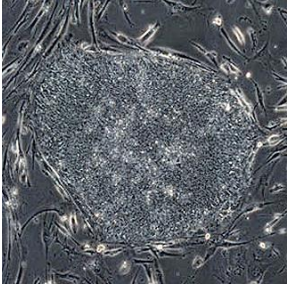


- 6** The food that you eat travels from your mouth, down your esophagus, into your stomach, and through your small and large intestines before your body rids itself of solid waste. As the food passes through your body, it is digested, and you get important nutrients from the food. Which of the following is the correct term used to describe a group of body parts working together to perform a specific function?
- A** an organism
 - B** a tissue
 - C** an organ system
 - D** an organ
- 7** Living things are made up of cells. Cells are organized at different levels to form very complex living organisms like your body. Each level has a specific role or job to perform. Which of the following lists these levels in the correct order of organization from the simplest to the most complex?
- A** cells, tissues, organs, organ systems, organisms
 - B** organisms, organ systems, organs, tissues, cells
 - C** tissues, cells, organs, organisms, organ systems
 - D** organs, organ systems, organisms, cells, tissues
- 8** All of the following are true EXCEPT:
- A** Skin is an organ.
 - B** Tissues are made up of organs.
 - C** Each organ is made up of its own kind of tissue.
 - D** Tissues are made up of cell.


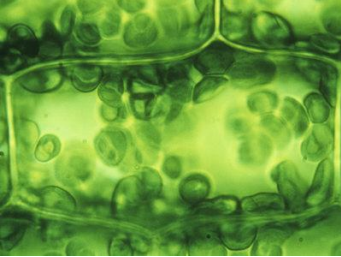




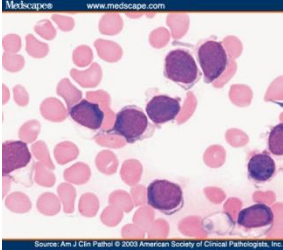
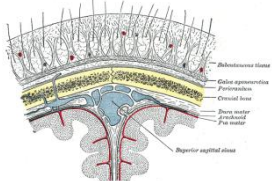
- 9** All of the following are types of tissue except:
- A** muscle
 - B** epithelial
 - C** digestive
 - D** bone marrow
- 10** The three major parts of the circulatory system are the heart, the blood vessels, and the blood. The heart is an organ made up of specialized cells. Which of these functions can the heart perform that individual heart cells cannot?
- A** pumping blood
 - B** producing waste
 - C** using energy
 - D** growing larger

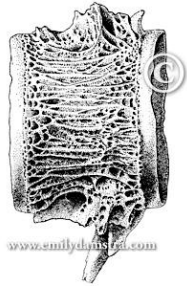
Using the laminated cards, place the levels of organization in the correct order from smallest to most complete. Write the definition under the level. Then sort through the cards and write in the examples under the correct level.

Examples	Examples	Examples	Examples	Examples

cell	tissue	organ
organ system	organism	Smallest unit of structure and function of a living thing
Cells working together to do the same function.	Tissues working together to perform a function.	Organs working together to perform a function.

<p>Organ systems working together to create and individual.</p>	 <p>heart cell</p>	 <p>cardiac muscle</p>
 <p>heart</p>	 <p>circulatory system</p>	 <p>human</p>
 <p>skin cell</p>	 <p>epidermis (top layer of skin)</p>	 <p>skin</p>

<p>integumentary system (skin, hair and nails)</p>	 <p>dog</p>	 <p>leaf cell</p>
 <p>parenchyma tissue in leaf</p>	 <p>leaf</p>	 <p>stems and leaves</p>
 <p>plant</p>	 <p>bone marrow cell</p>	 <p>periosteum (thin tissue covering bone)</p>



fish bone



skeletal system



fish